

Government Gazette Staatskoerant

REPUBLIC OF SOUTH AFRICA
REPUBLIEK VAN SUID-AFRIKA

Vol. 544

Pretoria, 13 October 2010
Oktober

No. 33627

IMPORTANT NOTICE

The Government Printing Works will not be held responsible for faxed documents not received due to errors on the fax machine or faxes received which are unclear or incomplete. Please be advised that an "OK" slip, received from a fax machine, will not be accepted as proof that documents were received by the GPW for printing. If documents are faxed to the GPW it will be the sender's responsibility to phone and confirm that the documents were received in good order.

Furthermore the Government Printing Works will also not be held responsible for cancellations and amendments which have not been done on original documents received from clients.

CONTENTS**INHOUD**

<i>No.</i>	<i>Page No.</i>	<i>Gazette No.</i>	<i>No.</i>	<i>Bladsy No.</i>	<i>Koerant No.</i>
GOVERNMENT NOTICE			GOEWERMENTSKENNISGEWING		
Transport, Department of			Vervoer, Departement van		
<i>Government Notice</i>			<i>Goewermentskennisgewing</i>		
901			901		
South African National Roads Agency Limited and the National Roads Act (7/1998): The South African National Roads Agency Limited: Declaration amendment of National Road N10 Section 7: Amendment of Declaration No. 630 of 2005	3	33627	Suid-Afrikaanse Nasionale Padagentskap Beperk en die Nasionale Paaie Wet (7/1998): Die Suid-Afrikaanse Nasionale Padagentskap Beperk: Verklaring wysiging van Nasionale Pad N10 Seksie 7: Wysiging van Verklaring No. 630 van 2005	4	33627

GOVERNMENT NOTICE

DEPARTMENT OF TRANSPORT

No. 901

13 October 2010

THE SOUTH AFRICAN NATIONAL ROADS AGENCY LIMITED

Registration No: 98/09584/06

DECLARATION AMENDMENT OF NATIONAL ROAD N10 SECTION 7

AMENDMENT OF DECLARATION No. 630 OF 2005

By virtue of section 40(1)(b) of the South African National Roads Agency Limited and the National Roads Act, 1998 (Act No. 7 of 1998), I hereby amend Declaration No. 630 of 2005, by substituting the section of the descriptive declaration from De Aar up to Britstown, with the subjoined sheets 1 to 9 of Plan No. P677/08.

[National Road N10 Section 7: De Aar – Britstown (N12)]



MINISTER OF TRANSPORT

GOEWERMENTSKENNISGEWING

DEPARTEMENT VAN VERVOER

No. 901

13 Oktober 2010

DIE SUID-AFRIKAANSE NASIONALE PADAGENTSKAP BEPERK

Registrasie No: 98/09584/06

VERKLARING WYSIGING VAN NASIONALE PAD N10 SEKSIE 7.

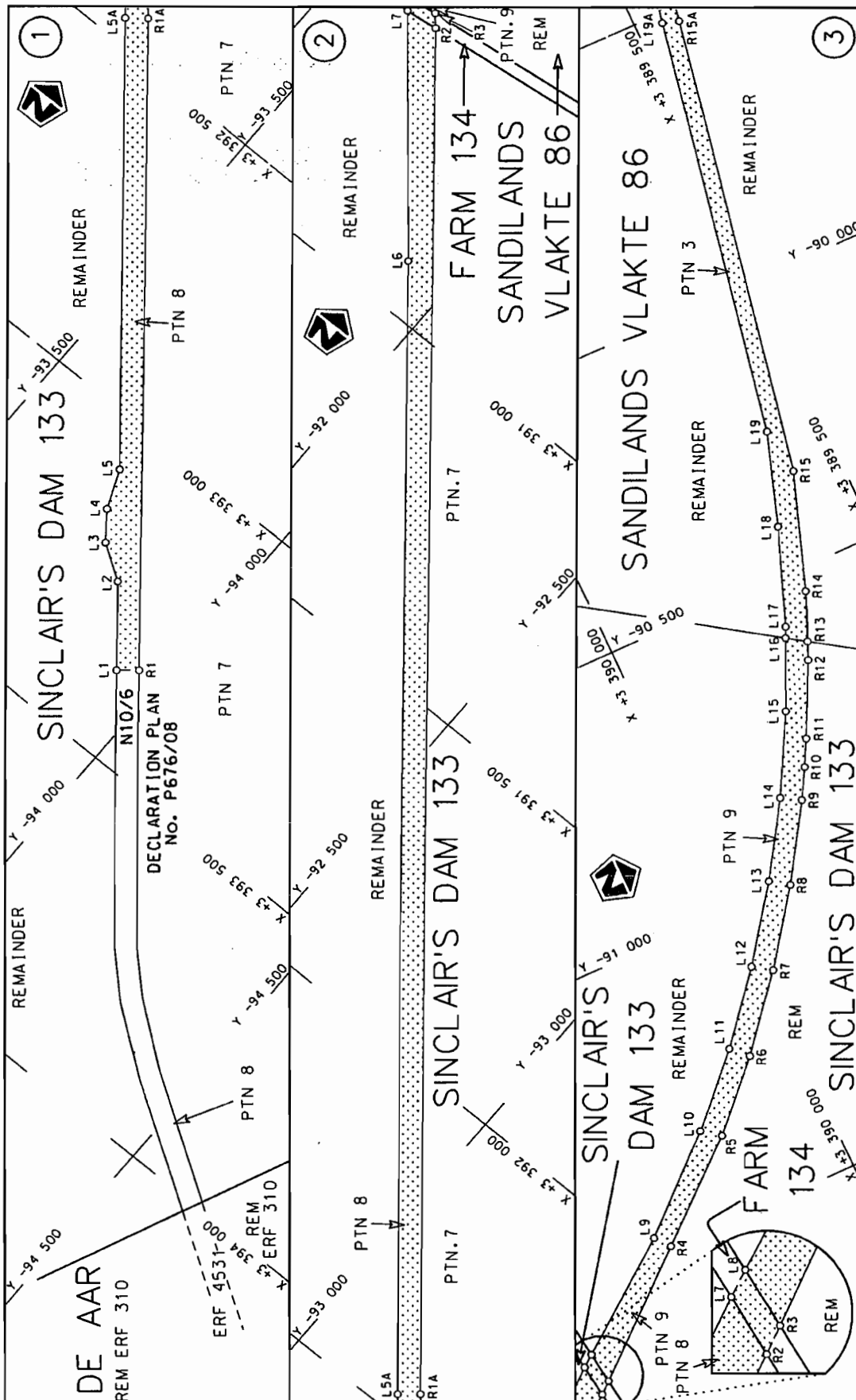
WYSIGING VAN VERKLARING NO. 630 VAN 2005

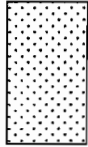
Kragtens Artikel 40(1)(b) van die Suid-Afrikaanse Nasionale Padagentskap Beperk en die Nasionale Paaie Wet, 1998 (Wet no. 7 van 1998), wysig ek hiermee Verklaring no. 630 van 2005, deur die gedeelte van die beskrywende verklaring vanaf De Aar tot by Britstown, te vervang met meegaande velle 1 tot 9 van Plan no. P677/08.

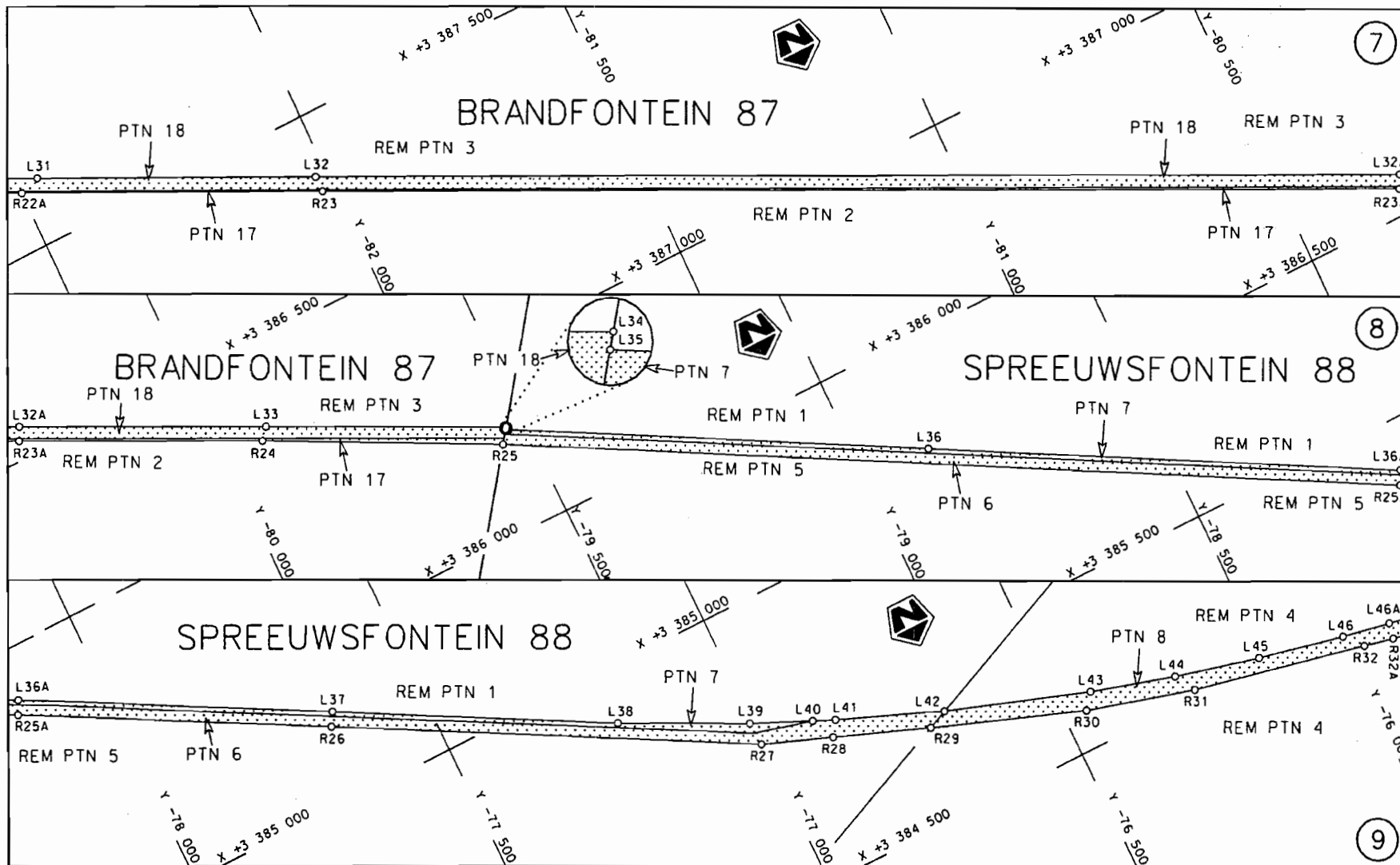
[Nasionale Pad N10 Seksie 7: De Aar – Britstown (N12)]



MINISTER VAN VERVOER



Die Suid Afrikaanse Nasionale Padogenetskaps Bepker The South African National Roads Agency Limited	Die figuur getoon The figure shown		steldie podreserwe voor van 'n gedeelte represents the road reserve of a portion van Nasionale Roete N10 Sektie of National Route N10 Section	
			Vel Sheet 1 of 9	Plan P677/08



Die Suid Afrikaanse Nasionale Padagentskap Beperk
The South African National Roads Agency Limited

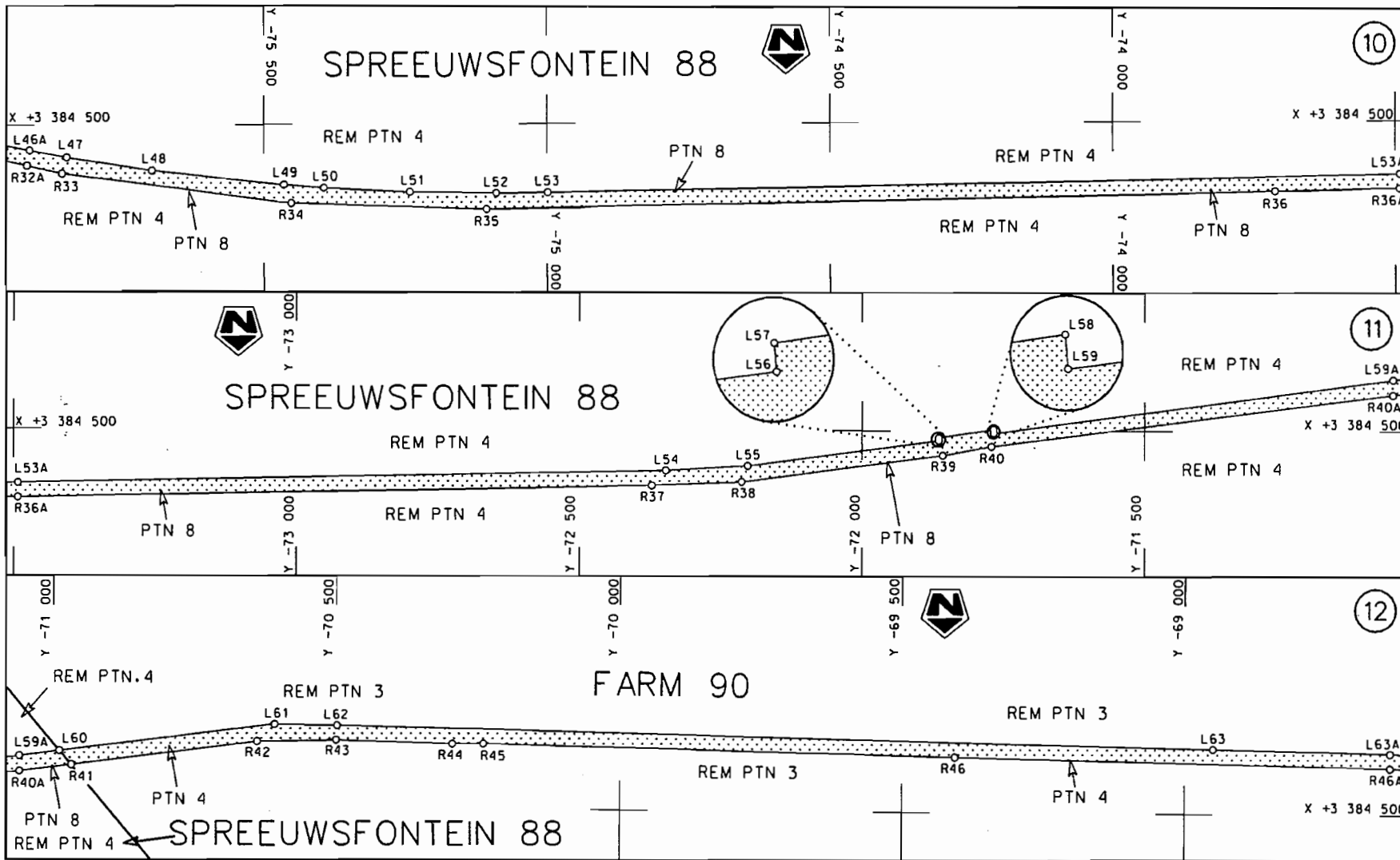
Die figuur getoon
The figure shown




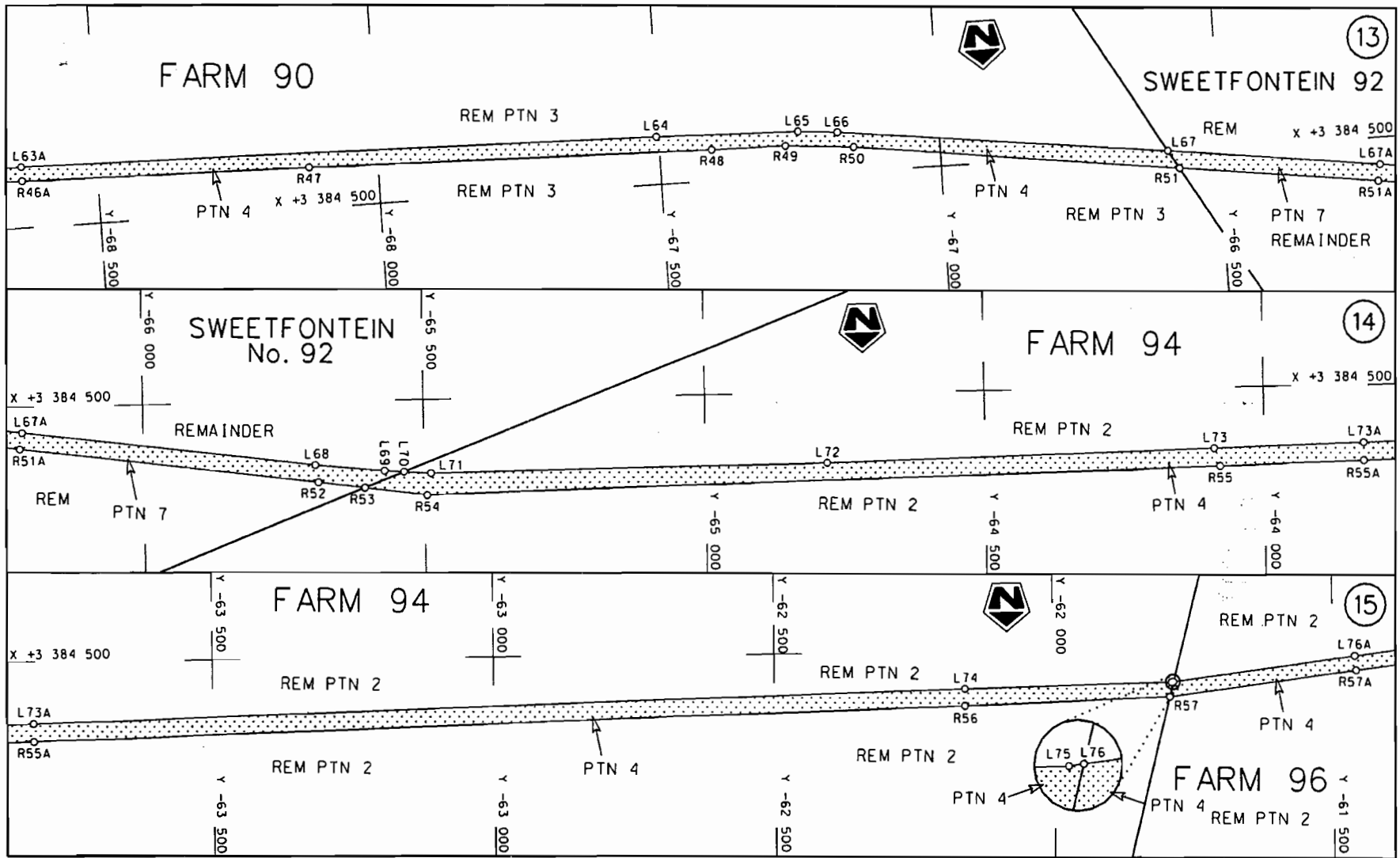
steldie padreserwe voor van 'n gedeelte
represents the road reserve of a portion
van Nasionale Roete N10 Seksie 7
of National Route N10 Section 7

Vel
Sheet 3 van 9
of

Plan. P677/08



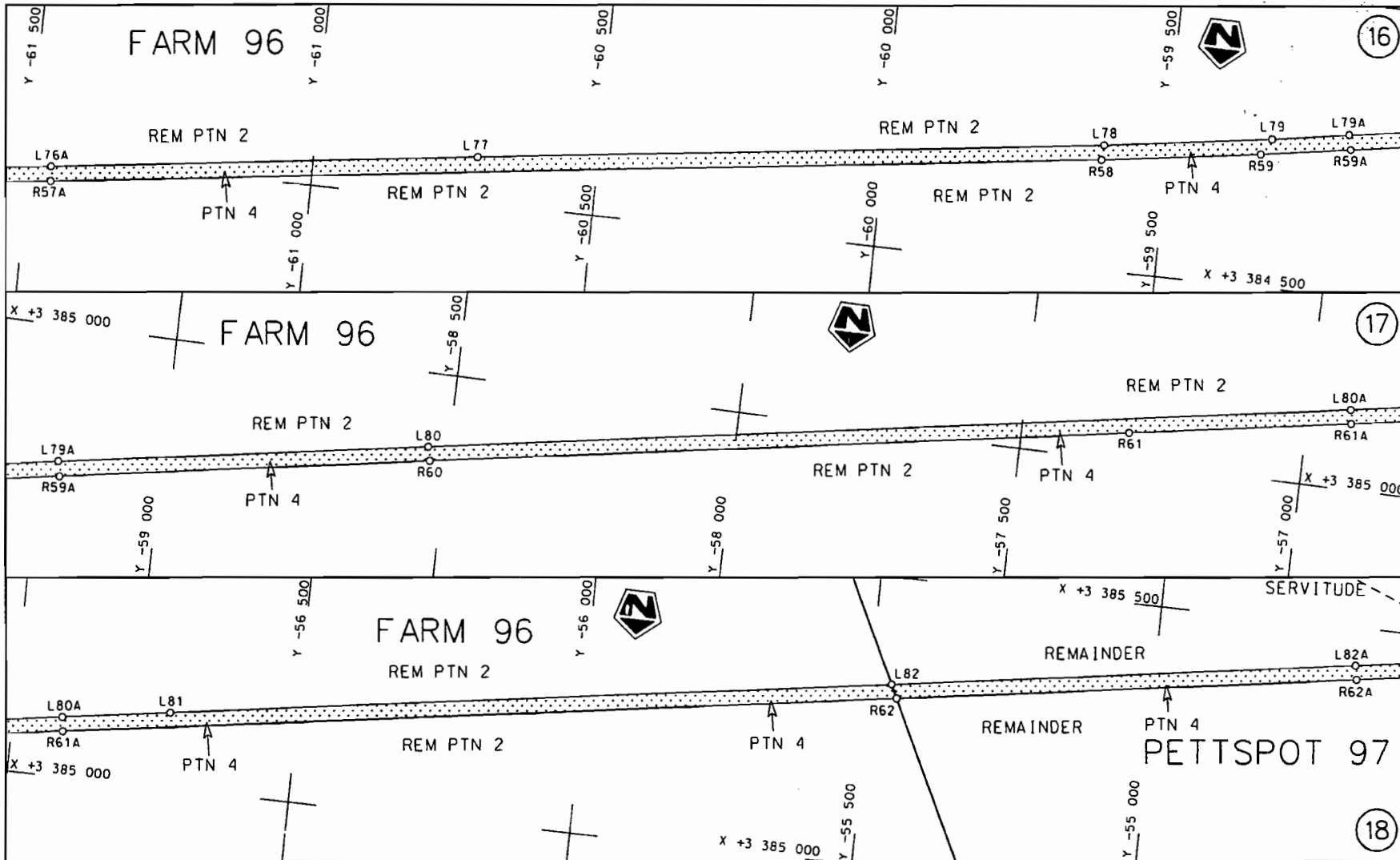
<p>Die Suid Afrikaanse Nasionale Padagentskap Beperk The South African National Roads Agency Limited</p>	<p>Die figuur getoon The figure shown</p> 	<p>steldie padreserwe voor van 'n gedeelte represents the road reserve of a portion van Nasionale Roete N10 Seksie of National Route Section 7</p>	<p>Vel Sheet 4 van of 9 Plan P677/08</p>
--	--	--	--




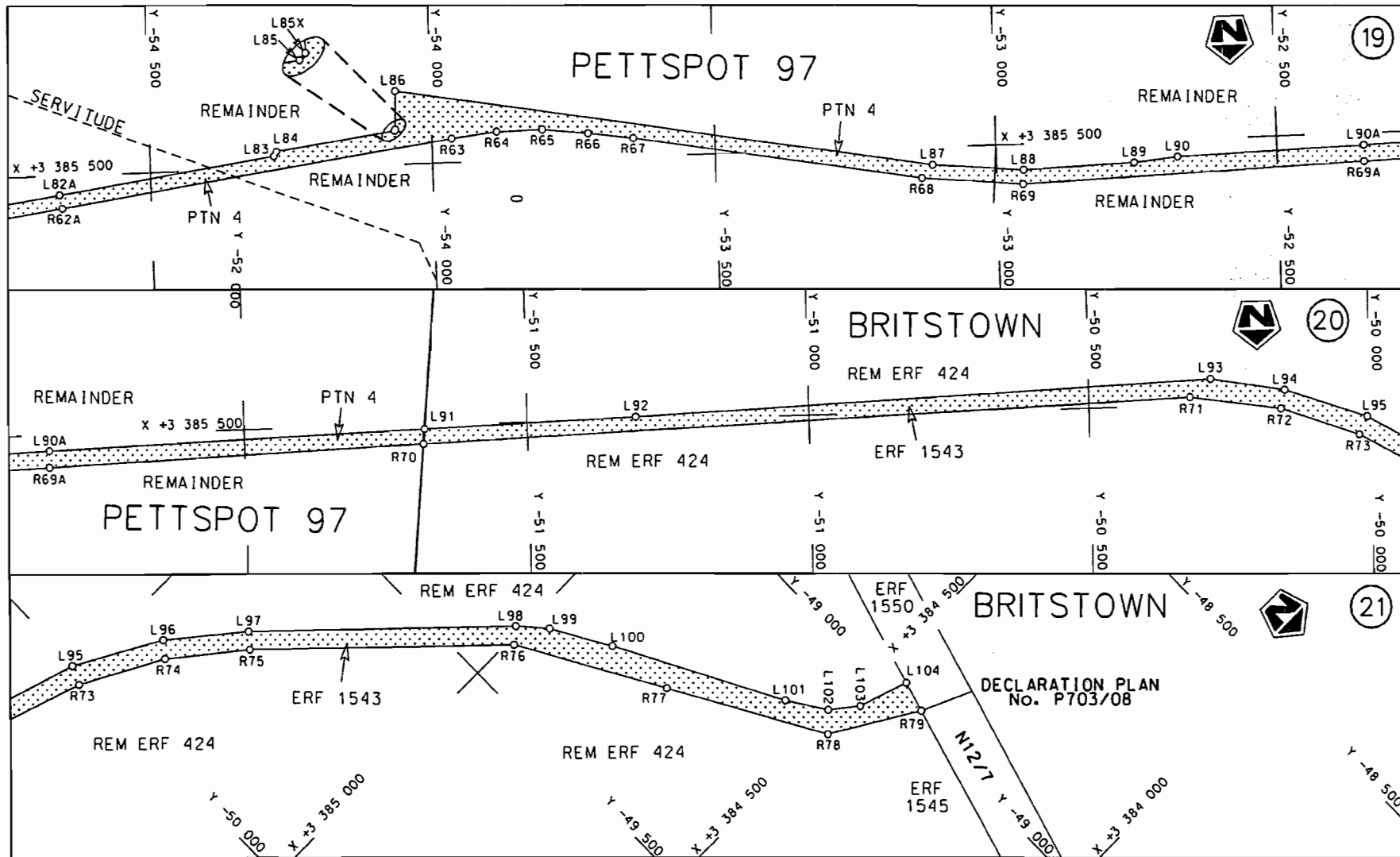
STAATSKOERANT, 13 OKTOBER 2010


No. 33627 9

<p>Die Suid Afrikaanse Nasionale Podagentskap Beperk The South African National Roads Agency Limited</p>	<p>Die figuur getoon The figure shown</p> <div style="display: flex; align-items: center; margin-top: 10px;"> <div style="width: 20px; height: 20px; background: repeating-linear-gradient(45deg, transparent, transparent 2px, black 2px, black 4px); border: 1px solid black; margin-right: 5px;"></div> </div>	<p>steldie padreserwe voor van 'n gedeelte represents the road reserve of a portion van Nasionale Roete N10 Seksie of National Route N10 Section</p>	<p>Vel Sheet 5 van of 9 Plan P677/08</p>
--	---	--	--



<p>Die Suid Afrikaanse Nasionale Podagentskap Beperk The South African National Roads Agency Limited</p>	<p>Die figuur getoon The figure shown</p>		<p>steldie padreserwe voor van 'n gedeelte represents the rood reserve of a portion van Nasionale Roete N10 Seksie of National Route Section 7</p>	<p>Vel Sheet 6 van of 9 Plan P677/08</p>
--	---	--	--	--



Die Suid Afrikaanse Nasionale Padogentskap Beperk The South African National Roads Agency Limited	Die figuur getoon The figure shown		steldie padreserwe voor van 'n gedeelte represents the road reserve of a portion van Nasionale Roete N10 of National Route Section 7	Vel Sheet 7 van of 9 Plan P677/08
--	---------------------------------------	--	---	--------------------------------------

PADRESERWE KOÖRDINATE / ROAD RESERVE CO-ORDINATES									
LINKERKANT/LEFT HAND SIDE					REGTERKANT/RIGHT HAND SIDE				
	Y	X	WG 23		Y	X			
L1	-93	926.290	3 393	361.070	R1	-93	955.800	3 393	336.860
L2	-93	826.440	3 393	239.360	R2	-91	686.970	3 390	564.740
L3	-93	765.100	3 393	199.290	R3	-91	669.180	3 390	544.620
L4	-93	728.280	3 393	151.780	R4	-91	497.530	3 390	346.090
L5	-93	699.690	3 393	084.540	R5	-91	355.450	3 390	183.960
L6	-91	916.310	3 390	911.790	R6	-91	247.320	3 390	080.860
L7	-91	629.690	3 390	571.640	R7	-91	128.010	3 389	981.640
L8	-91	613.790	3 390	551.290	R8	-91	004.190	3 389	891.870
L9	-91	472.120	3 390	366.460	R9	-90	875.510	3 389	810.840
L10	-91	332.330	3 390	214.200	R10	-90	824.290	3 389	782.130
L11	-91	221.020	3 390	108.240	R11	-90	779.740	3 389	758.540
L12	-91	106.810	3 390	013.100	R12	-90	654.690	3 389	697.740
L13	-90	982.470	3 389	922.820	R13	-90	623.900	3 389	684.890
L14	-90	856.130	3 389	843.430	R14	-90	541.280	3 389	650.440
L15	-90	720.970	3 389	770.800	R15	-90	336.950	3 389	580.820
L16	-90	602.520	3 389	716.870	R16	-89	396.870	3 389	402.830
L17	-90	584.320	3 389	708.590	R17	-88	195.430	3 389	177.840
L18	-90	415.400	3 389	646.170	R18	-87	584.350	3 389	061.870
L19	-90	254.800	3 389	593.750	R19	-85	596.290	3 388	686.950
L20	-87	591.430	3 389	091.600	R20	-84	279.560	3 388	438.530
L21	-85	580.980	3 388	712.200	R21	-84	061.650	3 388	367.210
L22	-85	522.650	3 388	699.260	R22	-83	896.330	3 388	287.830
L23	-84	363.110	3 388	481.430	R23	-82	019.870	3 387	368.940
L24	-84	205.190	3 388	444.250	R24	-79	927.290	3 386	342.220
L25	-84	060.730	3 388	392.600	R25	-79	549.960	3 386	150.240
L26	-84	043.790	3 388	385.650	R26	-77	668.750	3 385	126.540
L27	-84	045.010	3 388	384.390	R27	-77	003.040	3 384	763.580
L28	-83	895.780	3 388	314.320	R28	-76	884.240	3 384	718.370
L29	-83	766.650	3 388	252.240	R29	-76	721.940	3 384	656.520
L30	-83	182.700	3 387	965.270	R30	-76	461.530	3 384	560.300
L31	-82	462.550	3 387	613.320	R31	-76	274.150	3 384	507.590
L32	-82	019.600	3 387	396.540	R32	-75	971.380	3 384	441.620
L33	-79	911.020	3 386	361.840	R33	-75	857.570	3 384	416.880
L34	-79	531.710	3 386	175.000	R34	-75	452.310	3 384	364.810
L35	-79	534.220	3 386	171.590	R35	-75	107.690	3 384	353.390
L36	-78	878.260	3 385	813.810	R36	-73	713.430	3 384	379.760
L37	-77	655.640	3 385	148.590	R37	-72	372.880	3 384	403.880
L38	-77	215.500	3 384	908.600	R38	-72	213.660	3 384	410.520
L39	-77	005.740	3 384	804.560	R39	-71	857.200	3 384	456.560
L40	-76	904.750	3 384	759.630	R40	-71	771.240	3 384	471.990
L41	-76	867.420	3 384	743.020	R41	-70	967.480	3 384	571.170
L42	-76	687.370	3 384	670.980	R42	-70	638.490	3 384	613.360
L43	-76	440.790	3 384	586.280	R43	-70	499.750	3 384	616.650
L44	-76	295.340	3 384	543.470	R44	-70	294.710	3 384	611.190
L45	-76	147.510	3 384	505.420	R45	-70	239.690	3 384	611.790
L46	-75	998.150	3 384	472.110	R46	-69	406.900	3 384	595.310
L47	-75	849.300	3 384	444.260	R47	-68	121.230	3 384	570.660
L48	-75	699.030	3 384	421.410	R48	-67	407.960	3 384	555.290
L49	-75	465.330	3 384	396.870	R49	-67	275.340	3 384	553.980
L50	-75	395.490	3 384	390.940	R50	-67	153.170	3 384	544.150
L51	-75	243.130	3 384	383.430	R51	-66	573.110	3 384	471.000

Vel 8	Van 9	P677/09
Sheet	of	

PADRESERWE KOÖRDINATE / ROAD RESERVE CO-ORDINATES											
LINKERKANT/LEFT HAND SIDE					REGTERKANT/RIGHT HAND SIDE						
	Y		X	WG 23		Y		X			
L52	-75	090.510	3	384	381.060	R52	-65	686.710	3	384	359.290
L53	-74	999.120	3	384	381.770	R53	-65	605.280	3	384	348.380
L54	-72	348.020	3	384	429.730	R54	-65	495.440	3	384	333.670
L55	-72	202.850	3	384	438.300	R55	-64	078.720	3	384	362.150
L56	-71	864.220	3	384	481.970	R56	-62	159.990	3	384	407.240
L57	-71	864.730	3	384	487.590	R57	-61	791.120	3	384	417.850
L58	-71	767.500	3	384	501.160	R58	-59	614.950	3	384	689.070
L59	-71	766.920	3	384	494.490	R59	-59	334.710	3	384	727.310
L60	-70	988.270	3	384	595.170	R60	-58	529.930	3	384	850.210
L61	-70	608.430	3	384	643.440	R61	-57	307.750	3	385	036.030
L62	-70	498.460	3	384	642.100	R62	-55	461.940	3	385	315.320
L63	-68	949.800	3	384	611.600	R63	-53	964.650	3	385	542.890
L64	-67	504.110	3	384	583.900	R64	-53	885.680	3	385	552.880
L65	-67	251.420	3	384	577.790	R65	-53	804.790	3	385	554.460
L66	-67	180.410	3	384	571.900	R66	-53	723.340	3	385	546.360
L67	-66	592.120	3	384	502.390	R67	-53	643.590	3	385	535.830
L68	-65	691.660	3	384	389.350	R68	-53	130.810	3	385	453.960
L69	-65	570.170	3	384	376.820	R69	-52	951.890	3	385	439.780
L70	-65	536.070	3	384	374.510	R70	-51	681.050	3	385	492.820
L71	-65	487.880	3	384	371.240	R71	-50	316.400	3	385	549.830
L72	-64	781.330	3	384	378.350	R72	-50	155.530	3	385	527.650
L73	-64	088.820	3	384	393.320	R73	-50	017.260	3	385	480.670
L74	-62	159.410	3	384	436.570	R74	-49	877.260	3	385	405.220
L75	-61	787.870	3	384	443.380	R75	-49	758.450	3	385	310.370
L76	-61	784.250	3	384	443.840	R76	-49	420.350	3	384	989.320
L77	-60	712.470	3	384	577.870	R77	-49	278.990	3	384	746.290
L78	-59	612.880	3	384	714.730	R78	-49	130.030	3	384	489.720
L79	-59	317.370	3	384	755.420	R79	-48	981.420	3	384	400.320
L80	-58	535.240	3	384	873.760						
L81	-56	734.520	3	385	147.490						
L82	-55	473.280	3	385	337.880						
L83	-54	279.020	3	385	519.120						
L84	-54	273.910	3	385	527.430						
L85	-54	064.540	3	385	558.700						
L85X	-54	063.920	3	385	560.040						
L86	-54	062.350	3	385	625.980						
L87	-53	111.270	3	385	476.760						
L88	-52	950.220	3	385	464.600						
L89	-52	753.100	3	385	472.840						
L90	-52	674.880	3	385	481.220						
L91	-51	678.740	3	385	518.720						
L92	-51	304.910	3	385	532.800	L102	-49	100.220	3	384	518.710
L93	-50	279.030	3	385	580.550	L103	-49	053.860	3	384	482.710
L94	-50	148.750	3	385	559.610	L104	-48	966.470	3	384	453.810
L95	-50	002.820	3	385	511.850						
L96	-49	856.530	3	385	430.760						
L97	-49	737.950	3	385	334.520						
L98	-49	395.520	3	385	010.160						
L99	-49	355.310	3	384	964.780						
L100	-49	296.770	3	384	864.920						
L101	-49	143.130	3	384	584.430						

LINKERKANT/LEFT HAND SIDE					
	Y		X		
L102	-49	100.220	3	384	518.710
L103	-49	053.860	3	384	482.710
L104	-48	966.470	3	384	453.810

Vel	9	Van	9	P677/09
Sheet		of		