

# Government Gazette Staatskoerant

REPUBLIC OF SOUTH AFRICA  
REPUBLIEK VAN SUID-AFRIKA

Vol. 544

Pretoria, 13 October  
Oktober 2010

No. 33628

**IMPORTANT NOTICE**

The Government Printing Works will not be held responsible for faxed documents not received due to errors on the fax machine or faxes received which are unclear or incomplete. Please be advised that an "OK" slip, received from a fax machine, will not be accepted as proof that documents were received by the GPW for printing. If documents are faxed to the GPW it will be the sender's responsibility to phone and confirm that the documents were received in good order.

Furthermore the Government Printing Works will also not be held responsible for cancellations and amendments which have not been done on original documents received from clients.

**CONTENTS****INHOUD**

<i>No.</i>	<i>Page No.</i>	<i>Gazette No.</i>	<i>No.</i>	<i>Bladsy No.</i>	<i>Koerant No.</i>
<b>GOVERNMENT NOTICE</b>			<b>GOEWERMENTSKENNISGEWING</b>		
<b>Transport, Department of</b>			<b>Vervoer, Departement van</b>		
<i>Government Notice</i>			<i>Goewermentskennisgewing</i>		
902			902		
South African National Roads Agency Limited and the National Roads Act (7/1998): The South African National Roads Agency Limited: Declaration amendment of National Road N11 Section 11: Amendment of Declaration No. 1137 of 2005.....	3	33628	Suid-Afrikaanse Nasionale Padagentskap Beperk en die Nasionale Paaie Wet (7/1998): Die Suid-Afrikaanse Nasionale Padagentskap Beperk: Verklaring wysiging van Nasionale Pad N11 Seksie 11: Wysiging van Verklaring No. 1137 van 2005 .....	4	33628

---

## GOVERNMENT NOTICE

---

### DEPARTMENT OF TRANSPORT

No. 902

13 October 2010

## THE SOUTH AFRICAN NATIONAL ROADS AGENCY LIMITED

Registration No: 98/09584/06

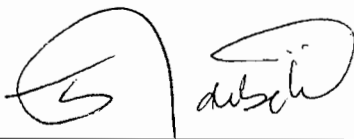
---

### DECLARATION AMENDMENT OF NATIONAL ROAD N11 SECTION 11

AMENDMENT OF DECLARATION NO. 1137 OF 2005.

By virtue of section 40(1)(b) of the South African National Roads Agency Limited and the National Roads Act, 1998 (Act No. 7 of 1998), I hereby amend Declaration No. 1137 of 2005 Annexure paragraph (II) by substituting it, with the subjoined sheets 1 to 7 of Plan No. P769/09.

(National Road N11 Section 11: Groblersdal – Marble Hall)



---

MINISTER OF TRANSPORT

---

## GOEWERMENSKENNISGEWING

---

### DEPARTEMENT VAN VERVOER

No. 902

13 Oktober 2010

## DIE SUID-AFRIKAANSE NASIONALE PADAGENTSKAP BEPERK

Registrasie No: 98/09584/06

---

### VERKLARING WYSIGING VAN NASIONALE PAD N11 SEKSIE 11.

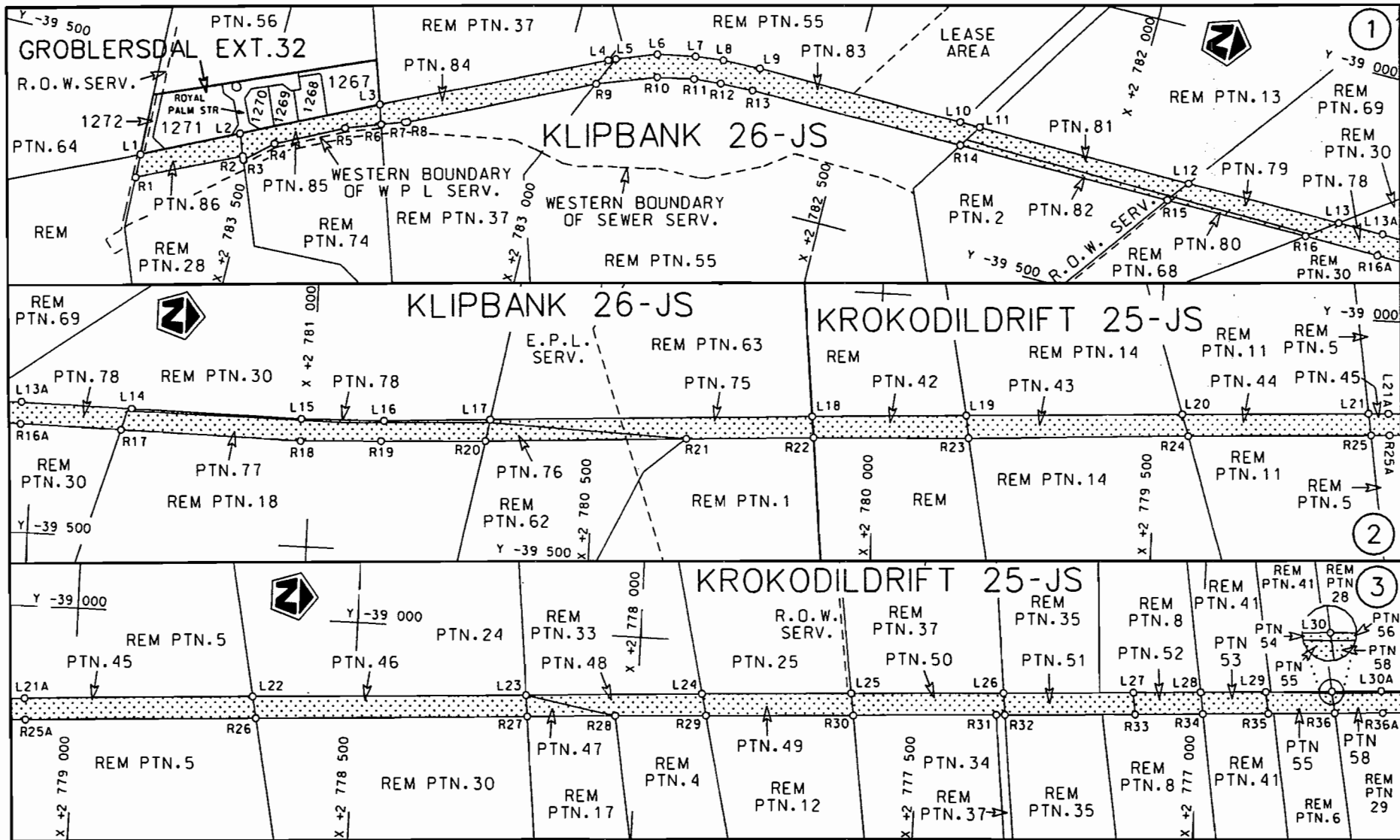
WYSIGING VAN VERKLARING NO. 1137 VAN 2005.

Kragtens Artikel 40(1)(b) van die Suid-Afrikaanse Nasionale Padagentskap Beperk en die Nasionale Paaie Wet, 1998 (Wet no.7 van 1998), wysig ek hiermee Verklaring no. 1137 van 2005 Bylae paragraaf (II) deur dit, te vervang met meegaande velle 1 tot 7 van Plan no. P769/09.

(Nasionale Pad N11 Seksie 11 Groblersdal – Marble Hall)



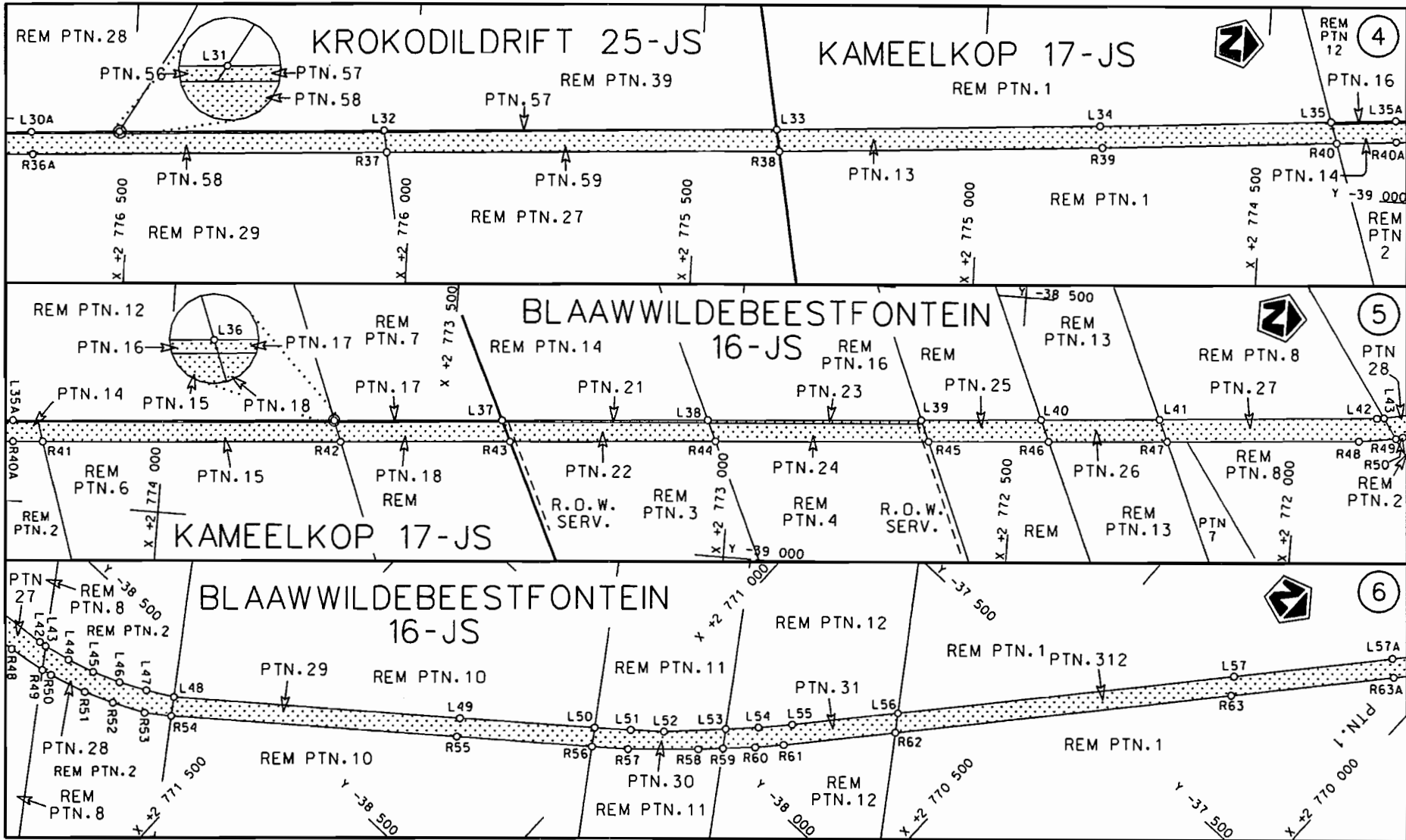
MINISTER VAN VERVOER




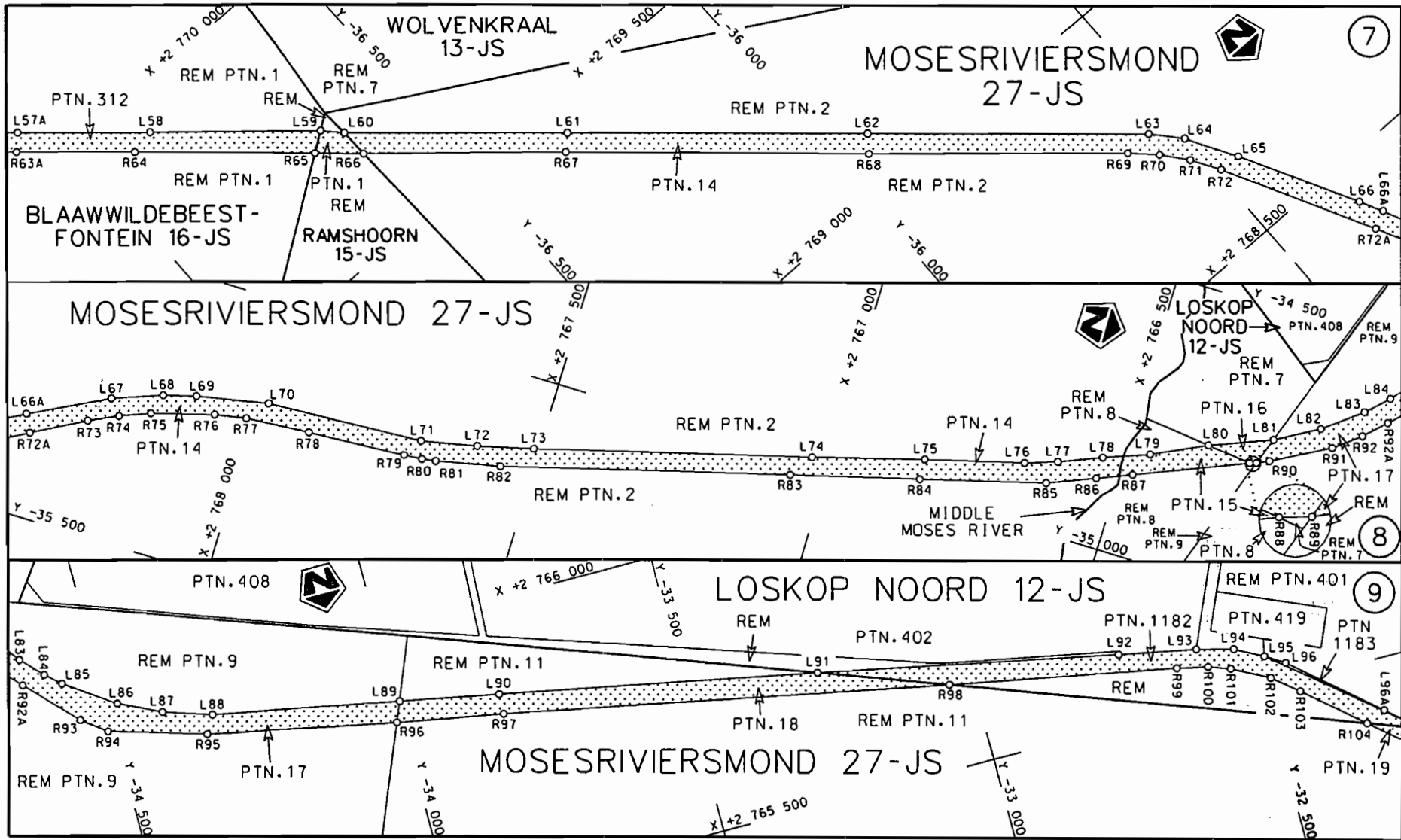
STAATSKOERANT, 13 OKTOBER 2010

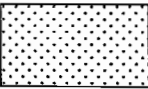
No. 33628 5

<p>Die Suid Afrikaanse Nasionale Padagentskap Beperk The South African National Roads Agency Limited</p>	<p>Die figuur getoon The figure shown</p>		<p>steldie padreserwe voor van 'n gedeelte represents the road reserve of a portion van Nasionale Roete N11 Sektie of National Route Section 11</p>	<p>Vel Sheet 1 van 7 Plan P769/09</p>
--	---	--	---	---



<p>Die Suid Afrikaanse Nasionale Padagentskap Beperk The South African National Roads Agency Limited</p>	<p>Die figuur getoon The figure shown</p> 	<p>steldie padreserwe voor van 'n gedeelte represents the road reserve of a portion van Nasionale Roete N11 Seksie 11 of National Route N11 Section 11</p>	<p>Vel Sheet 2 van 7 Plan P769/09</p>
--	--	--	---



Die Suid Afrikaanse Nasionale Padagentskap Beperk The South African National Roads Agency Limited	Die figuur getoon The figure shown		Vel Sheet 3 van 7 of of
steldie padreserwe voor van 'n gedeelte represents the road reserve of a portion van Nasionale Roete N11 Seksie Section of National Route 11			Plan P769/09

STAATSKOERANT, 13 OKTOBER 2010

No. 33628 7





PADRESERWE KOÖRDINATE / ROAD RESERVE CO-ORDINATES						
LINKERKANT/LEFT HAND SIDE			REGTERKANT/RIGHT HAND SIDE			
	Y	X	WG 29°		Y	X
L1	-39 674.330	2 783 696.510		R1	-39 715.650	2 783 695.330
L2	-39 596.630	2 783 533.710		R2	-39 633.460	2 783 519.410
L3	-39 487.080	2 783 304.130		R3	-39 639.560	2 783 517.040
L4	-39 313.440	2 782 931.220		R4	-39 599.270	2 783 469.920
L5	-39 308.230	2 782 918.780		R5	-39 542.470	2 783 353.530
L6	-39 282.010	2 782 849.880		R6	-39 520.450	2 783 293.320
L7	-39 269.040	2 782 783.750		R7	-39 506.510	2 783 253.890
L8	-39 263.460	2 782 734.440		R8	-39 505.390	2 783 249.900
L9	-39 261.240	2 782 668.190		R9	-39 358.620	2 782 942.190
L10	-39 264.370	2 782 299.000		R10	-39 321.340	2 782 840.650
L11	-39 264.690	2 782 263.320		R11	-39 308.140	2 782 777.000
L12	-39 268.210	2 781 877.380		R12	-39 304.010	2 782 729.620
L13	-39 270.550	2 781 601.970		R13	-39 301.780	2 782 671.620
L14	-39 273.000	2 781 322.340		R14	-39 303.320	2 782 288.720
L15	-39 275.520	2 781 019.860		R15	-39 306.020	2 781 906.770
L16	-39 271.190	2 780 872.100		R16	-39 307.530	2 781 654.180
L17	-39 259.430	2 780 686.630		R17	-39 310.660	2 781 339.810
L18	-39 223.060	2 780 115.910		R18	-39 314.050	2 781 019.630
L19	-39 206.440	2 779 841.180		R19	-39 306.930	2 780 875.900
L20	-39 183.600	2 779 455.610		R20	-39 297.440	2 780 693.490
L21	-39 164.400	2 779 125.060		R21	-39 274.440	2 780 337.700
L22	-39 140.070	2 778 681.920		R22	-39 260.200	2 780 111.870
L23	-39 112.230	2 778 198.460		R23	-39 245.950	2 779 835.570
L24	-39 093.170	2 777 886.810		R24	-39 220.810	2 779 443.440
L25	-39 077.720	2 777 620.570		R25	-39 202.000	2 779 119.140
L26	-39 062.310	2 777 350.310		R26	-39 177.750	2 778 674.560
L27	-39 048.690	2 777 117.930		R27	-39 149.340	2 778 194.620
L28	-39 041.680	2 776 998.430		R28	-39 140.000	2 778 038.050
L29	-39 034.930	2 776 883.320		R29	-39 130.970	2 777 878.160
L30	-39 027.930	2 776 765.350		R30	-39 116.220	2 777 615.220
L31	-39 011.850	2 776 521.630		R31	-39 100.720	2 777 361.370
L32	-38 982.480	2 776 052.870		R32	-39 099.860	2 777 346.230
L33	-38 939.430	2 775 362.770		R33	-39 086.610	2 777 112.900
L34	-38 898.240	2 774 791.070		R34	-39 079.120	2 776 992.620
L35	-38 866.770	2 774 382.930		R35	-39 072.470	2 776 877.090
L36	-38 813.420	2 773 702.040		R36	-39 065.240	2 776 758.470
L37	-38 789.630	2 773 406.540		R37	-39 019.430	2 776 046.120
L38	-38 760.530	2 773 045.050		R38	-38 976.500	2 775 355.990
L39	-38 730.310	2 772 667.710		R39	-38 935.490	2 774 785.110
L40	-38 712.680	2 772 456.630		R40	-38 903.240	2 774 371.180
L41	-38 695.210	2 772 247.360		R41	-38 890.940	2 774 213.420
L42	-38 662.240	2 771 855.450		R42	-38 849.610	2 773 688.120
L43	-38 661.640	2 771 851.940		R43	-38 825.770	2 773 389.550
L44	-38 651.940	2 771 807.000		R44	-38 796.600	2 773 028.770
L45	-38 638.070	2 771 759.840		R45	-38 766.920	2 772 652.330
L46	-38 619.640	2 771 712.910		R46	-38 749.860	2 772 440.600
L47	-38 597.460	2 771 668.150		R47	-38 733.200	2 772 230.660
L48	-38 573.210	2 771 624.190		R48	-38 706.110	2 771 893.420
L49	-38 258.730	2 771 226.060		R49	-38 696.210	2 771 828.200
L50	-38 110.870	2 771 041.200		R50	-38 692.890	2 771 807.410
L51	-38 070.980	2 770 991.670		R51	-38 674.120	2 771 747.140

Vel  
Sheet

5  
Van 7  
of

P769/09

PADRESERWE KOÖRDINATE / ROAD RESERVE CO-ORDINATES									
LINKERKANT/LEFT HAND SIDE					REGTERKANT/RIGHT HAND SIDE				
	Y	X	WG 29°		Y	X			
L52	-38 032.820	2 770	945.820	R52	-38 654.520	2 771	697.210		
L53	-37 955.930	2 770	869.360	R53	-38 629.020	2 771	643.260		
L54	-37 914.810	2 770	828.980	R54	-38 601.240	2 771	604.800		
L55	-37 870.700	2 770	788.810	R55	-38 286.170	2 771	208.140		
L56	-37 728.490	2 770	664.180	R56	-38 138.700	2 771	022.200		
L57	-37 276.160	2 770	269.940	R57	-38 099.230	2 770	972.430		
L58	-36 884.950	2 769	930.220	R58	-38 014.760	2 770	880.700		
L59	-36 654.040	2 769	732.270	R59	-37 984.370	2 770	850.030		
L60	-36 625.020	2 769	702.120	R60	-37 944.400	2 770	809.620		
L61	-36 327.950	2 769	443.980	R61	-37 907.370	2 770	775.830		
L62	-35 925.430	2 769	093.750	R62	-37 757.040	2 770	644.400		
L63	-35 547.530	2 768	766.180	R63	-37 304.560	2 770	250.760		
L64	-35 503.420	2 768	717.800	R64	-36 927.260	2 769	923.020		
L65	-35 452.350	2 768	631.970	R65	-36 686.910	2 769	709.630		
L66	-35 342.980	2 768	430.590	R66	-36 622.850	2 769	652.860		
L67	-35 252.460	2 768	252.700	R67	-36 351.500	2 769	420.970		
L68	-35 220.300	2 768	165.380	R68	-35 946.820	2 769	065.820		
L69	-35 204.570	2 768	107.450	R69	-35 597.780	2 768	765.580		
L70	-35 180.210	2 767	981.160	R70	-35 556.620	2 768	725.990		
L71	-35 165.810	2 767	704.160	R71	-35 520.820	2 768	682.940		
L72	-35 145.510	2 767	606.560	R72	-35 490.520	2 768	634.210		
L73	-35 121.460	2 767	509.430	R73	-35 302.330	2 768	281.970		
L74	-34 992.500	2 767	032.620	R74	-35 278.360	2 768	230.760		
L75	-34 937.420	2 766	838.670	R75	-35 257.700	2 768	177.470		
L76	-34 891.400	2 766	666.720	R76	-35 226.860	2 768	067.310		
L77	-34 872.150	2 766	610.830	R77	-35 216.750	2 768	011.570		
L78	-34 842.020	2 766	537.300	R78	-35 208.610	2 767	897.870		
L79	-34 811.890	2 766	457.740	R79	-35 198.360	2 767	726.220		
L80	-34 766.120	2 766	362.520	R80	-35 196.050	2 767	693.490		
L81	-34 723.550	2 766	254.740	R81	-35 192.190	2 767	668.850		
L82	-34 680.970	2 766	179.650	R82	-35 168.360	2 767	557.440		
L83	-34 630.330	2 766	114.190	R83	-35 033.540	2 767	061.050		
L84	-34 594.020	2 766	076.870	R84	-34 973.490	2 766	837.180		
L85	-34 567.350	2 766	053.340	R85	-34 914.280	2 766	620.020		
L86	-34 481.490	2 765	993.330	R86	-34 880.420	2 766	537.590		
L87	-34 406.860	2 765	957.760	R87	-34 855.540	2 766	478.040		
L88	-34 321.520	2 765	930.970	R88	-34 775.040	2 766	283.550		
L89	-33 995.180	2 765	868.160	R89	-34 771.350	2 766	272.000		
L90	-33 821.890	2 765	834.760	R90	-34 761.640	2 766	251.050		
L91	-33 265.180	2 765	728.170	R91	-34 706.950	2 766	151.070		
L92	-32 737.920	2 765	623.240	R92	-34 671.750	2 766	105.860		
L93	-32 600.740	2 765	597.040	R93	-34 552.620	2 765	982.530		
L94	-32 536.400	2 765	580.530	R94	-34 510.360	2 765	949.500		
L95	-32 486.970	2 765	554.440	R95	-34 339.580	2 765	899.990		
L96	-32 453.550	2 765	533.610	R96	-34 009.530	2 765	833.070		
L97	-32 248.470	2 765	361.060	R97	-33 823.120	2 765	799.380		
L98	-31 756.420	2 764	954.410	R98	-33 042.640	2 765	647.810		
L99	-31 738.360	2 764	940.190	R99	-32 643.130	2 765	573.670		
L100	-31 730.130	2 764	933.700	R100	-32 588.580	2 765	561.670		
L101	-31 094.740	2 764	406.530	R101	-32 550.370	2 765	548.370		
L102	-30 920.130	2 764	262.020	R102	-32 486.040	2 765	514.640		

Vel	6	Van	7	P769/09
Sheet		of		

PADRESERWE KOÖRDINATE / ROAD RESERVE CO-ORDINATES						
LINKERKANT/LEFT HAND SIDE				REGTERKANT/RIGHT HAND SIDE		
	Y	X	WG 29°		Y	X
L103	-30 244.760	2 763	701.840	R103	-32 441.450	2 765 478.410
L104	-30 177.310	2 763	652.430	R104	-32 340.940	2 765 394.450
L105	-30 160.880	2 763	642.900	R105	-31 758.650	2 764 908.060
				R106	-31 746.840	2 764 898.430
				R107	-31 105.980	2 764 365.190
				R108	-30 951.010	2 764 236.360
				R109	-30 267.780	2 763 671.960
				R110	-30 192.260	2 763 617.260
				Vel 7 Van 7		P769/09
				Sheet of		