

Government Gazette Staatskoerant

REPUBLIC OF SOUTH AFRICA
REPUBLIEK VAN SUID-AFRIKA

Vol. 544

Pretoria, 15 October
Oktober 2010

No. 33630

IMPORTANT NOTICE

The Government Printing Works will not be held responsible for faxed documents not received due to errors on the fax machine or faxes received which are unclear or incomplete. Please be advised that an "OK" slip, received from a fax machine, will not be accepted as proof that documents were received by the GPW for printing. If documents are faxed to the GPW it will be the sender's responsibility to phone and confirm that the documents were received in good order.

Furthermore the Government Printing Works will also not be held responsible for cancellations and amendments which have not been done on original documents received from clients.

CONTENTS**INHOUD**

<i>No.</i>	<i>Page No.</i>	<i>Gazette No.</i>	<i>No.</i>	<i>Bladsy No.</i>	<i>Koerant No.</i>
GOVERNMENT NOTICE			GOEWERMENTSKENNISGEWING		
Transport, Department of			Vervoer, Departement van		
<i>Government Notice</i>			<i>Goewermentskennisgewing</i>		
904			904		
South African National Roads Agency Limited and the National Roads Act (7/1998): The South African National Roads Agency Limited: Declaration amendment of National Road N12 Section 6: Amendment of Declaration No. 631 of 2005	3	33630	Suid-Afrikaanse Nasionale Padagentskap Beperk en die Nasionale Paaie Wet (7/1998): Die Suid-Afrikaanse Nasionale Padagentskap Beperk: Verklaring wysiging van Nasionale Pad N12 Seksie 6: Wysiging van Verklaring No. 631 van 2005	4	33630

GOVERNMENT NOTICE

DEPARTMENT OF TRANSPORT

No. 904

15 October 2010

THE SOUTH AFRICAN NATIONAL ROADS AGENCY LIMITED

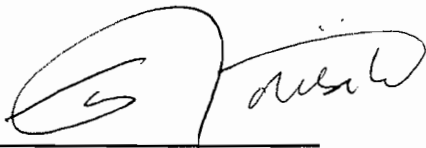
Registration No: 98/09584/06

DECLARATION AMENDMENT OF NATIONAL ROAD N12 SECTION 6

AMENDMENT OF DECLARATION No. 631 OF 2005

By virtue of section 40(1)(b) of the South African National Roads Agency Limited and the National Roads Act, 1998 (Act No. 7 of 1998), I hereby amend Declaration No. 631 of 2005, by substituting the descriptive section of the route from Victoria West up to Britstown, with the subjoined sheets 1 to 27 of Plan No. P727/08.

(National Road N12 Section 6: Victoria West – Britstown)



MINISTER OF TRANSPORT

GOEWERMENSKENNISGEWING

DEPARTEMENT VAN VERVOER

No. 904

15 Oktober 2010

DIE SUID-AFRIKAANSE NASIONALE PADAGENTSKAP BEPERK

Registrasie No: 98/09584/06

VERKLARING WYSIGING VAN NASIONALE PAD N12 SEKSIE 6.

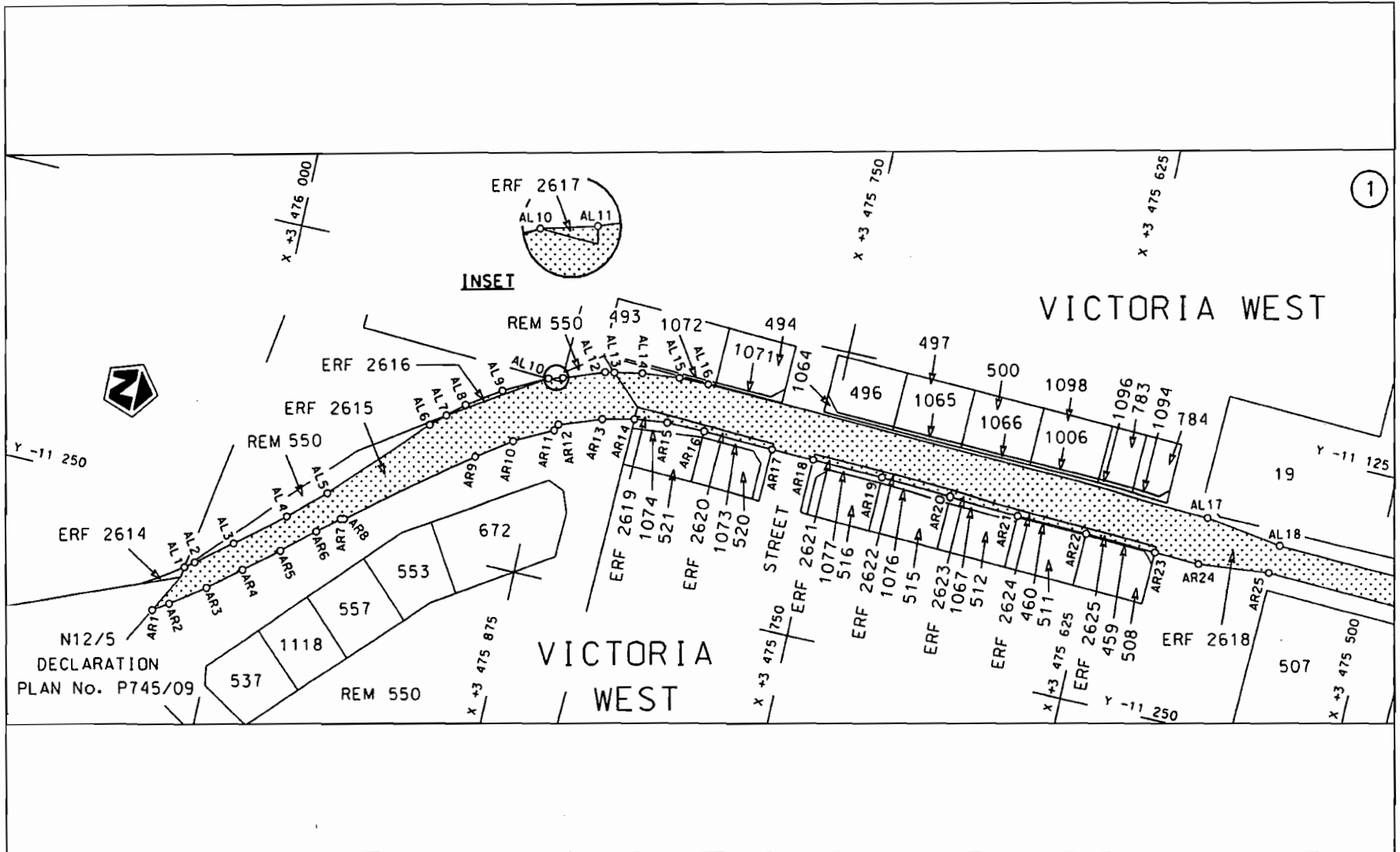
WYSIGING VAN VERKLARING NO. 631 VAN 2005

Kragtens Artikel 40(1)(b) van die Suid-Afrikaanse Nasionale Padagentskap Beperk en die Nasionale Paaie Wet, 1998 (Wet no.7 van 1998), wysig ek hiermee Verklaring no. 631 van 2005, deur die beskrywende gedeelte van die roete vanaf Victoria Wes tot by Britstown, te vervang met meegaande velle 1 tot 27 van Plan no. P727/08.

(Nasionale Pad N12 Seksie 6: Victoria Wes – Britstown)

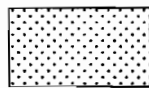


MINISTER VAN VERVOER



Die Suid Afrikaanse Nasionale Padagentskap Beperk
The South African National Roads Agency Limited

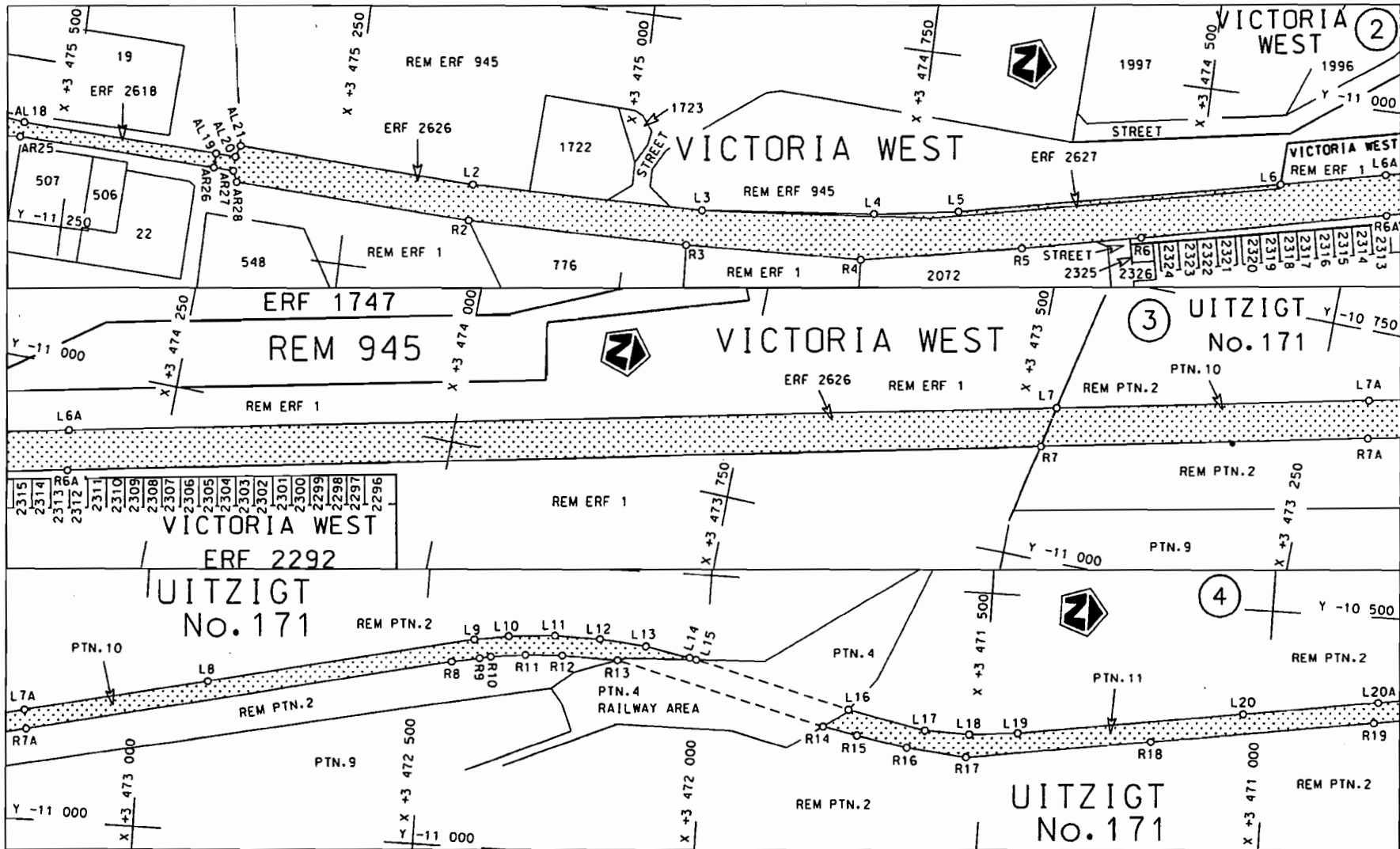
Die figuur getoon
The figure shown



steldie podreserwe voor van 'n gedeelte
represents the road reserve of a portion
van Nasionale Raete N12 Seksie
of National Route Section 6

Vel
Sheet 1 van
of 27
Plan
P727/08

D.O.9.A



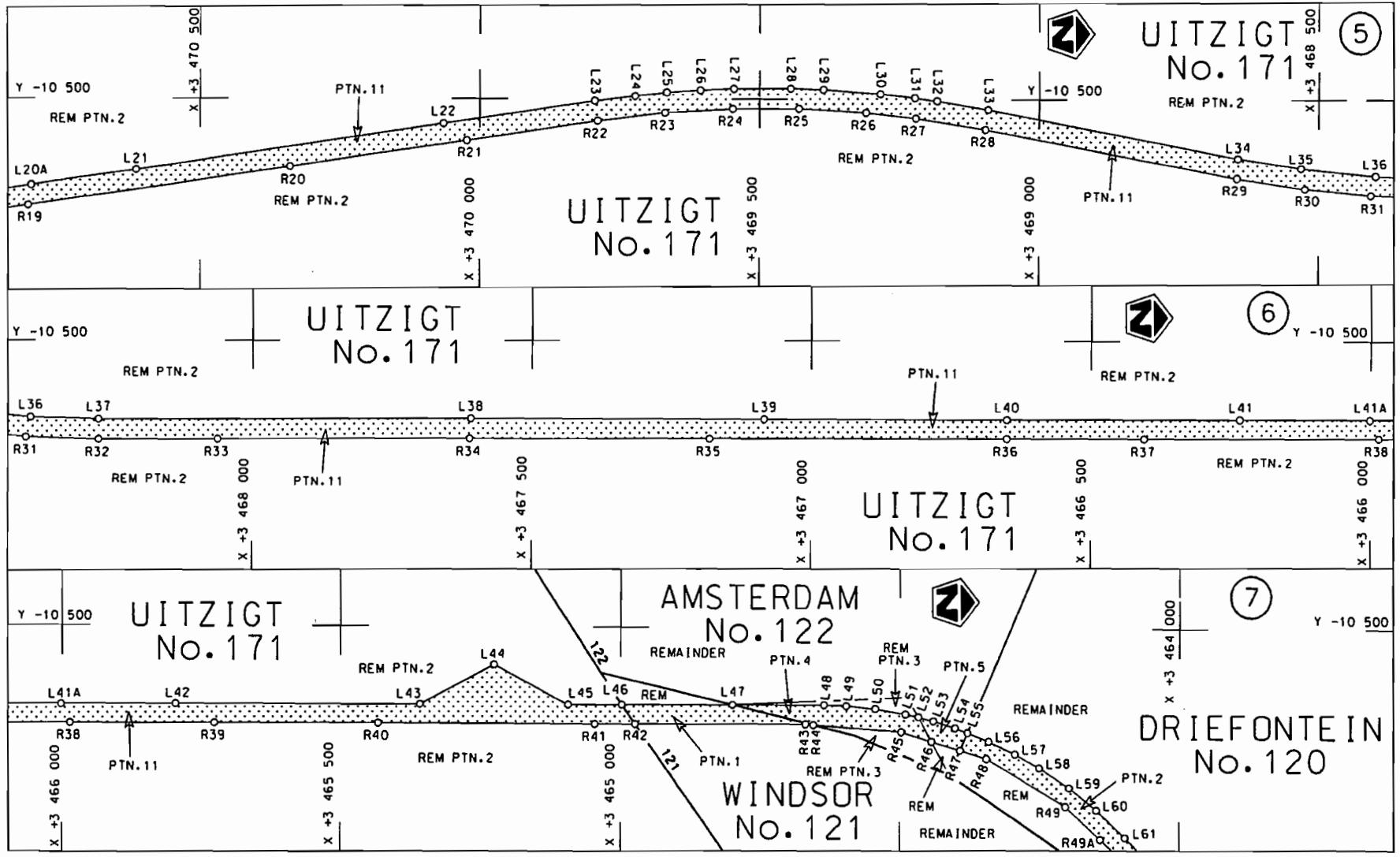
Suid-Afrikaanse Padagentskop Bpk.
South African National Roads Agency Ltd.


Die figuur getoon
The figure shown



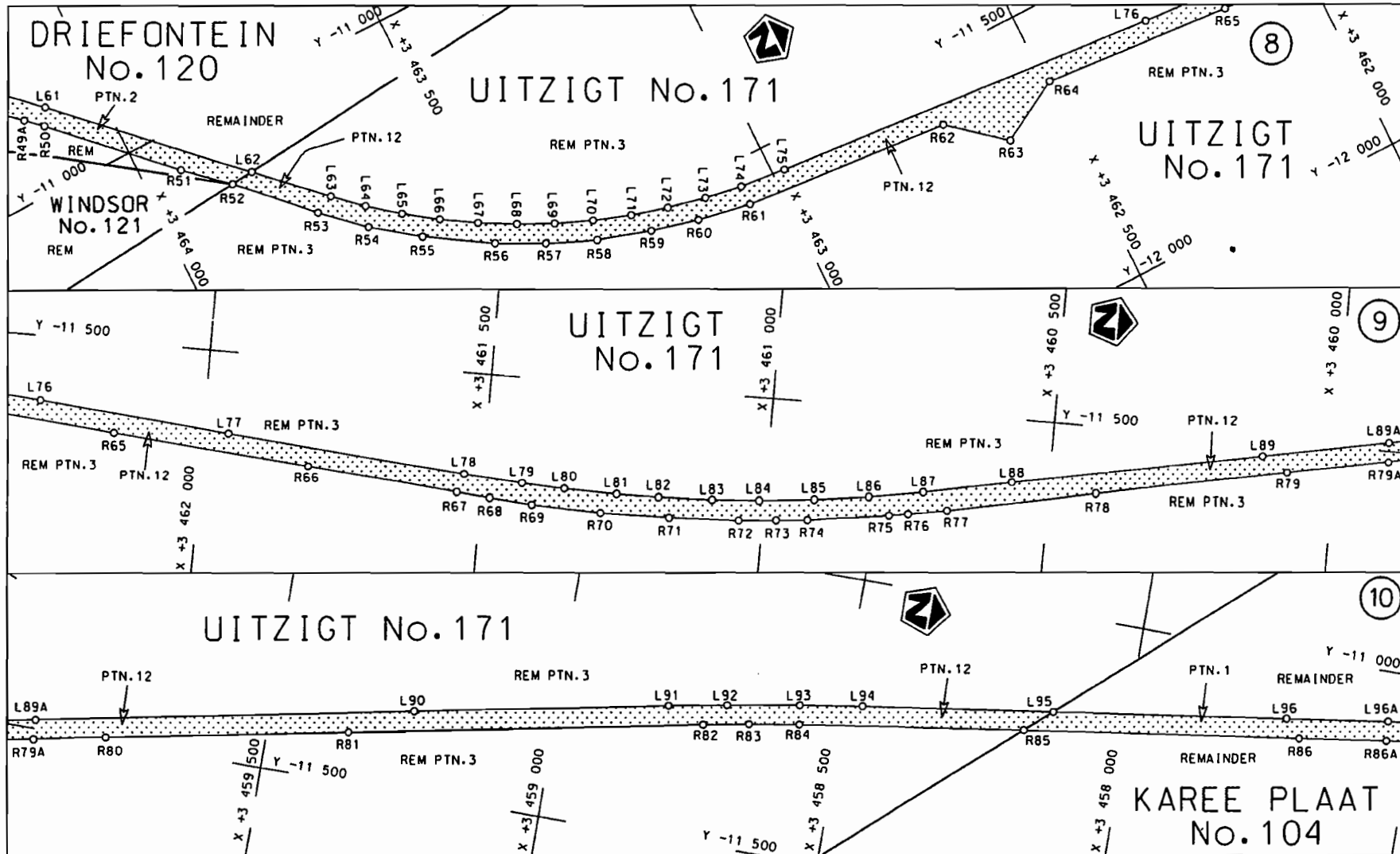
steldie padreserwe voor van 'n gedeelte
represents the road reserve of a portion
van Nasionale Roete N12 Seksie
of National Route N12 Section 6

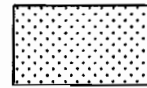
Vel Sheet 2 van of 27
Plan P727/08



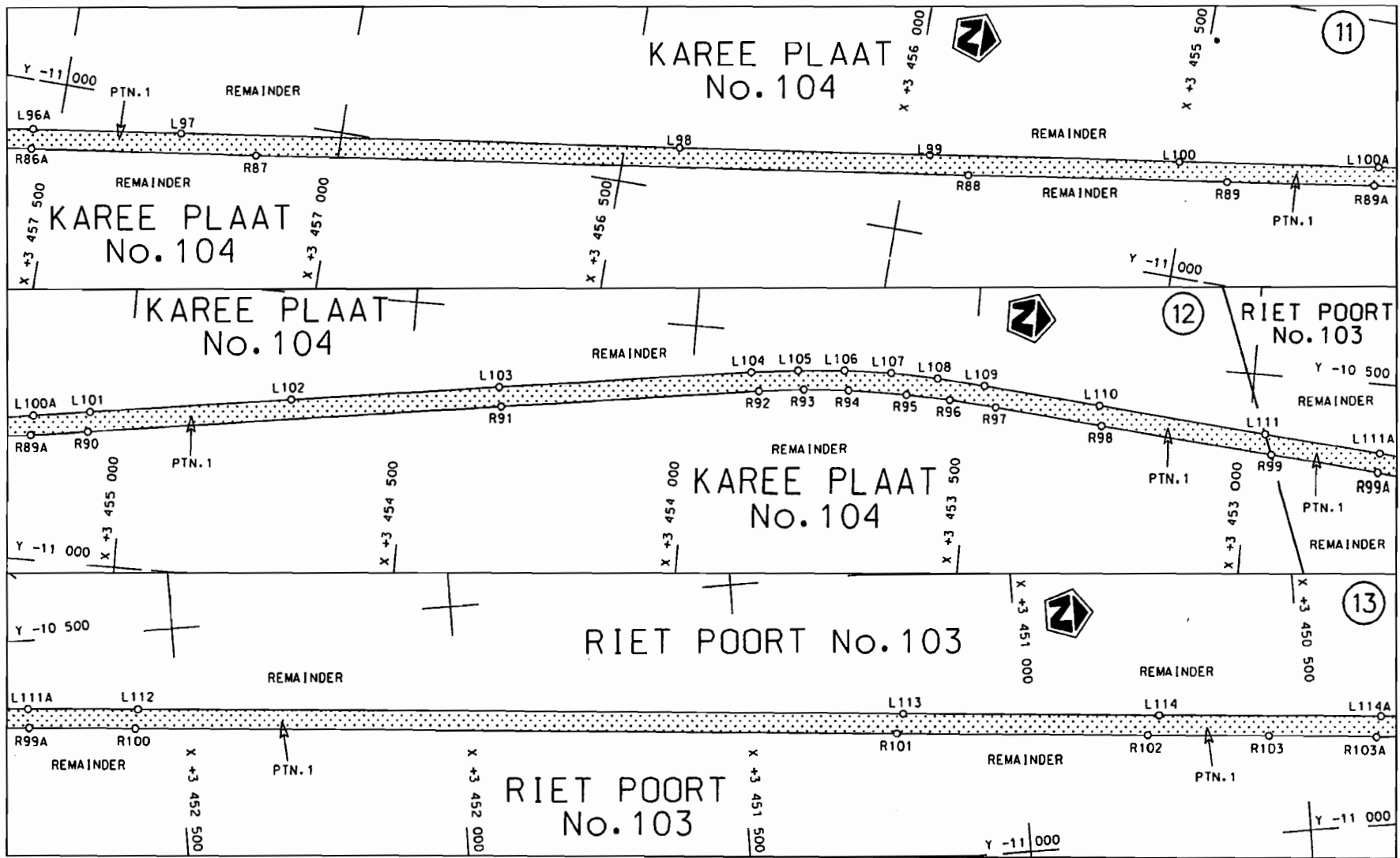
Suid-Afrikaanse Padagentskop Bpk. South African National Roads Agency Ltd.	Die figuur getoon The figure shown	 stel die padreserwe voor van 'n gedeelte represents the road reserve of a portion van Nasionale Roete of National Route	Vel Sheet 3 of 27 Plan P727/08
---	---------------------------------------	--	--------------------------------------


D.O.9.A



<p>Suid-Afrikaanse Padagentskap Bpk. South African National Roads Agency Ltd.</p>	<p>Die figuur getoon The figure shown</p> 	<p>steldie padreserwe voor van 'n gedeelte represents the road reserve of a portion van Nasionale Roete of National Route</p> <p>N12 Seksie 6</p>	<p>Vel Sheet 4 van of 27 Plan P727/08</p>
---	--	---	---

D.O.9.A



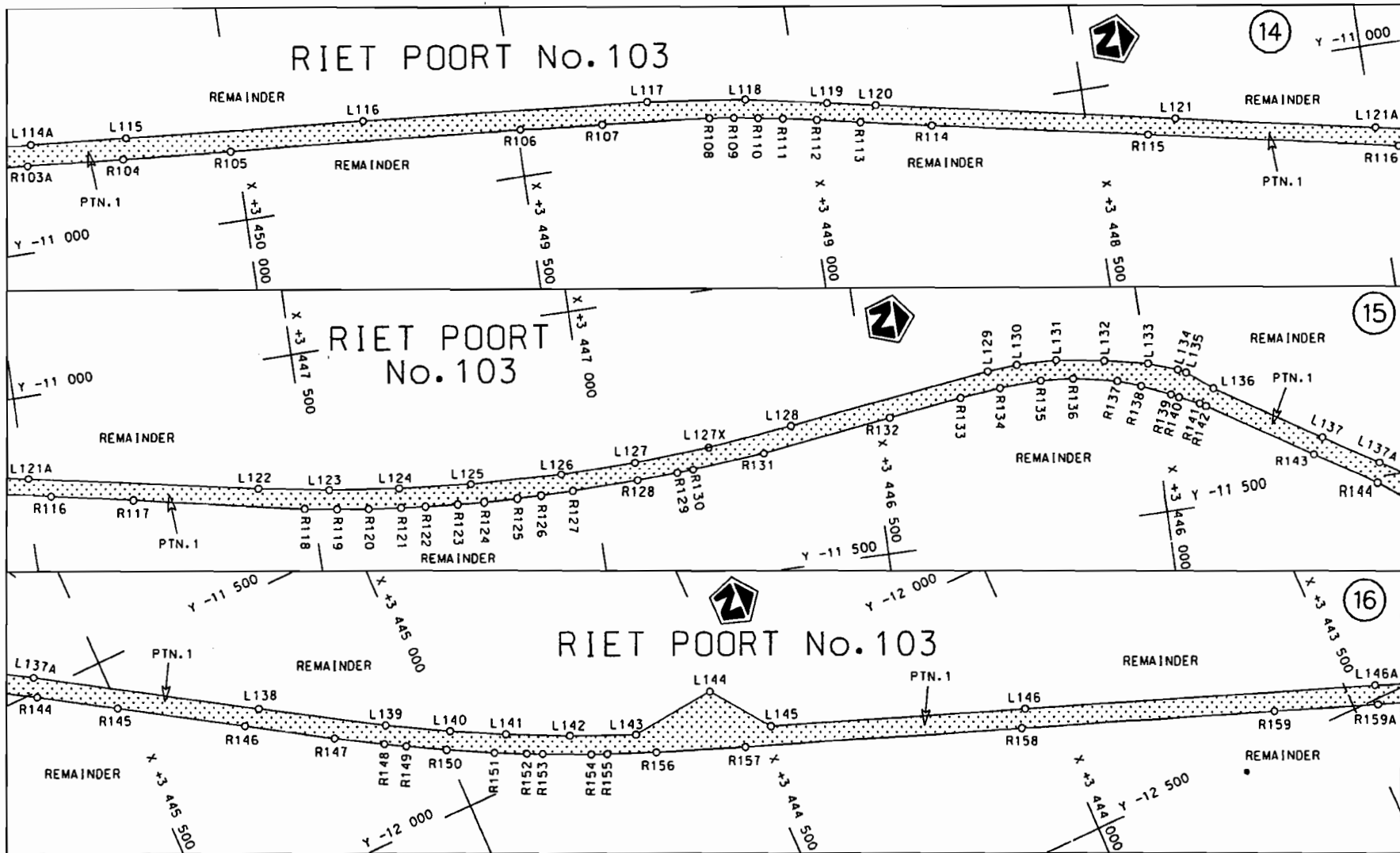
Suid-Afrikaanse Padogentskap Bpk. South African National Roads Agency Ltd.	Die figuur getoon The figure shown	 stel die padreserwe voor van 'n gedeelte represents the road reserve of a portion van Nasionale Roete of National Route	Vel Sheet 5 van of 27 Plan P727/08
---	---------------------------------------	---	---


N12 Seksie 6

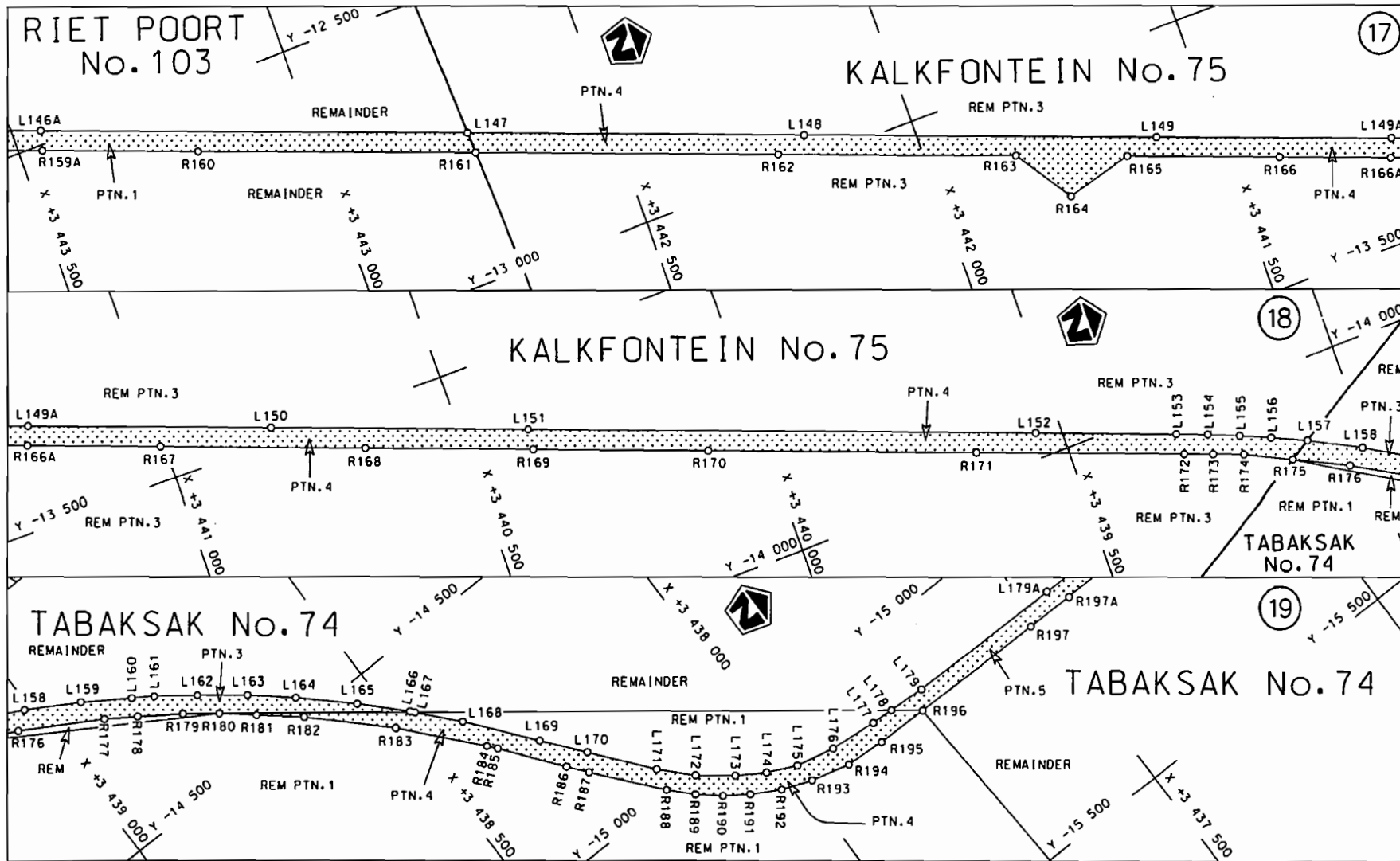
D.O.9.A

STAATSKOERANT, 15 OKTOBER 2010

No. 33630 9



<p>Suid-Afrikaanse Padogentskop Bpk. South African National Roads Agency Ltd.</p>	<p>Die figuur getoon The figure shown</p> 	<p>steldie padreserwe voor van 'n gedeelte represents the road reserve of a portion van Nasionale Roete of National Route</p> <p>N12</p>	<p>Vel Sheet 6 van of 27 Plan P727/08</p>
---	--	--	---



Suid-Afrikaanse Padagentskap Bpk.
South African National Roads Agency Ltd.

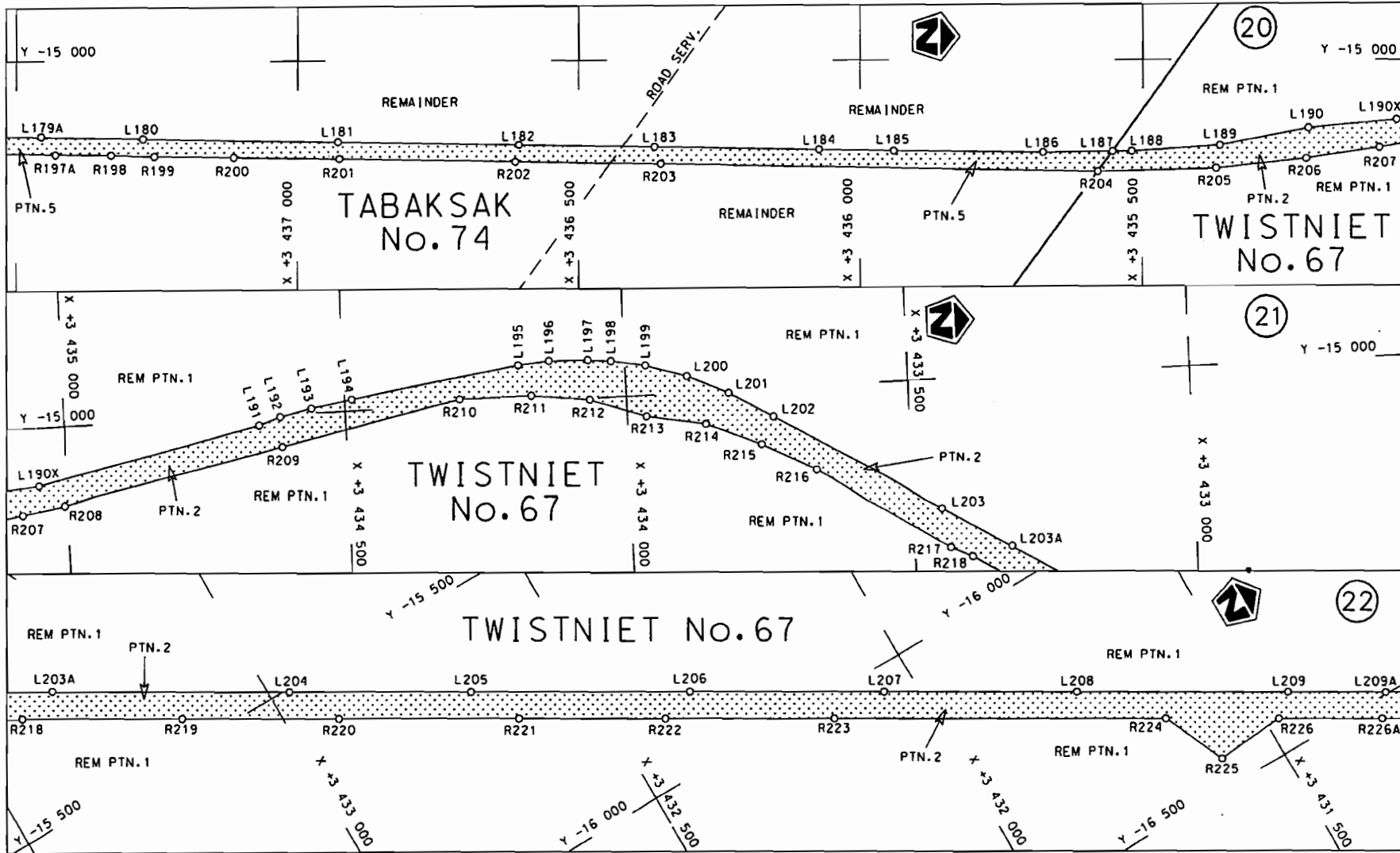
Die figuur getoon
The figure shown




steldie padreserwe voor van 'n gedeelte
represents the road reserve of a portion
van Nasionale Roete N12
of National Route N12

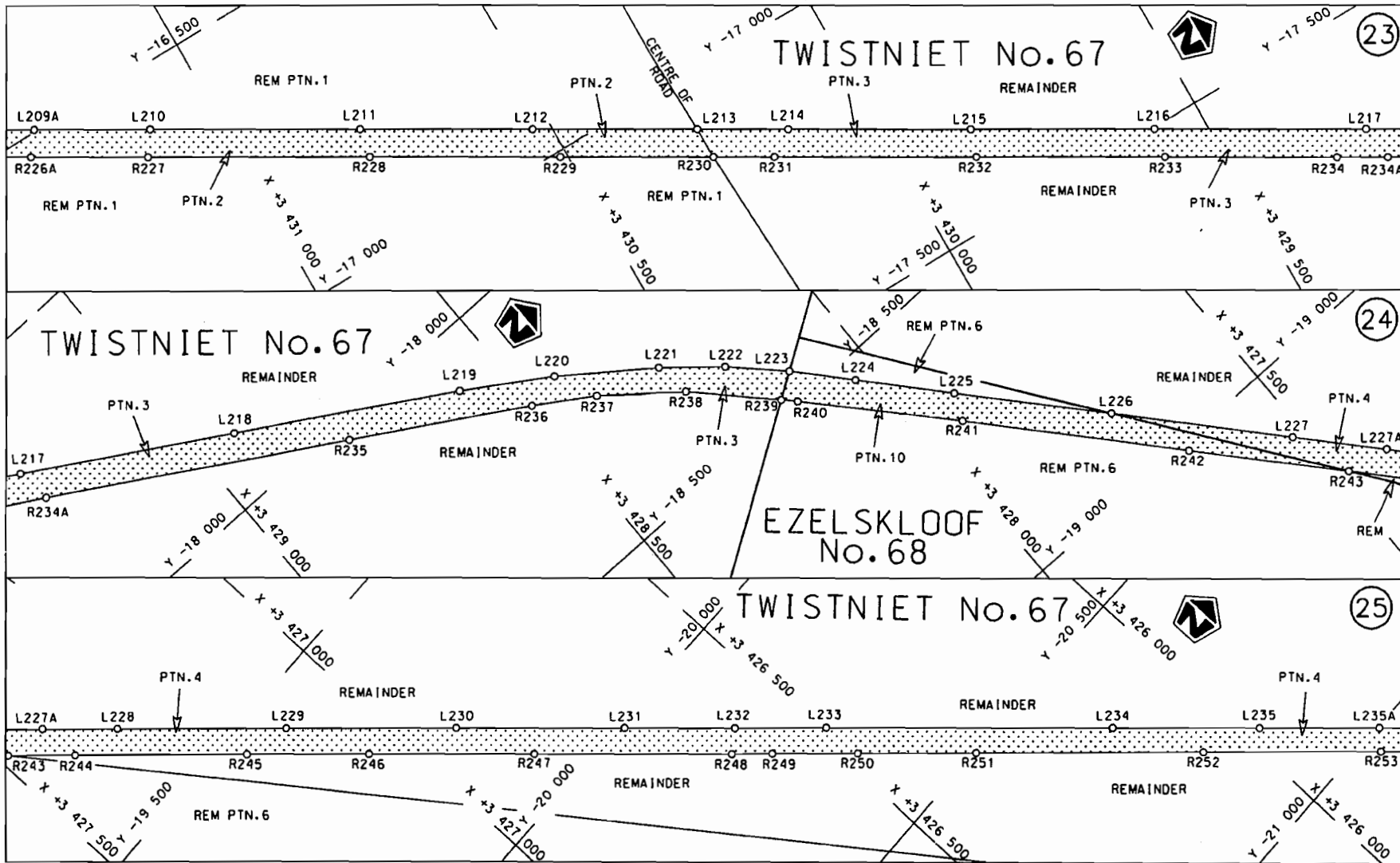
Vel Sheet 7 van of 27
Plan P727/08

D.O.9.A



<p>Suid-Afrikaanse Padagentskap Bpk. South African National Roads Agency Ltd.</p>	<p>Die figuur getoon The figure shown</p> 	<p>stel die padreserwe voor van 'n gedeelte represents the road reserve of a portion von Nasionale Roete N12 Seksie 6 of National Route N12 Section 6</p>	<p>Vel 8 van 27 Sheet 8 of 27 Plan P727/08</p>
---	--	---	--

D.O.9.A



Suid-Afrikaanse Padagentskap Bpk.
South African National Roads Agency Ltd.

Die figuur getoon
The figure shown



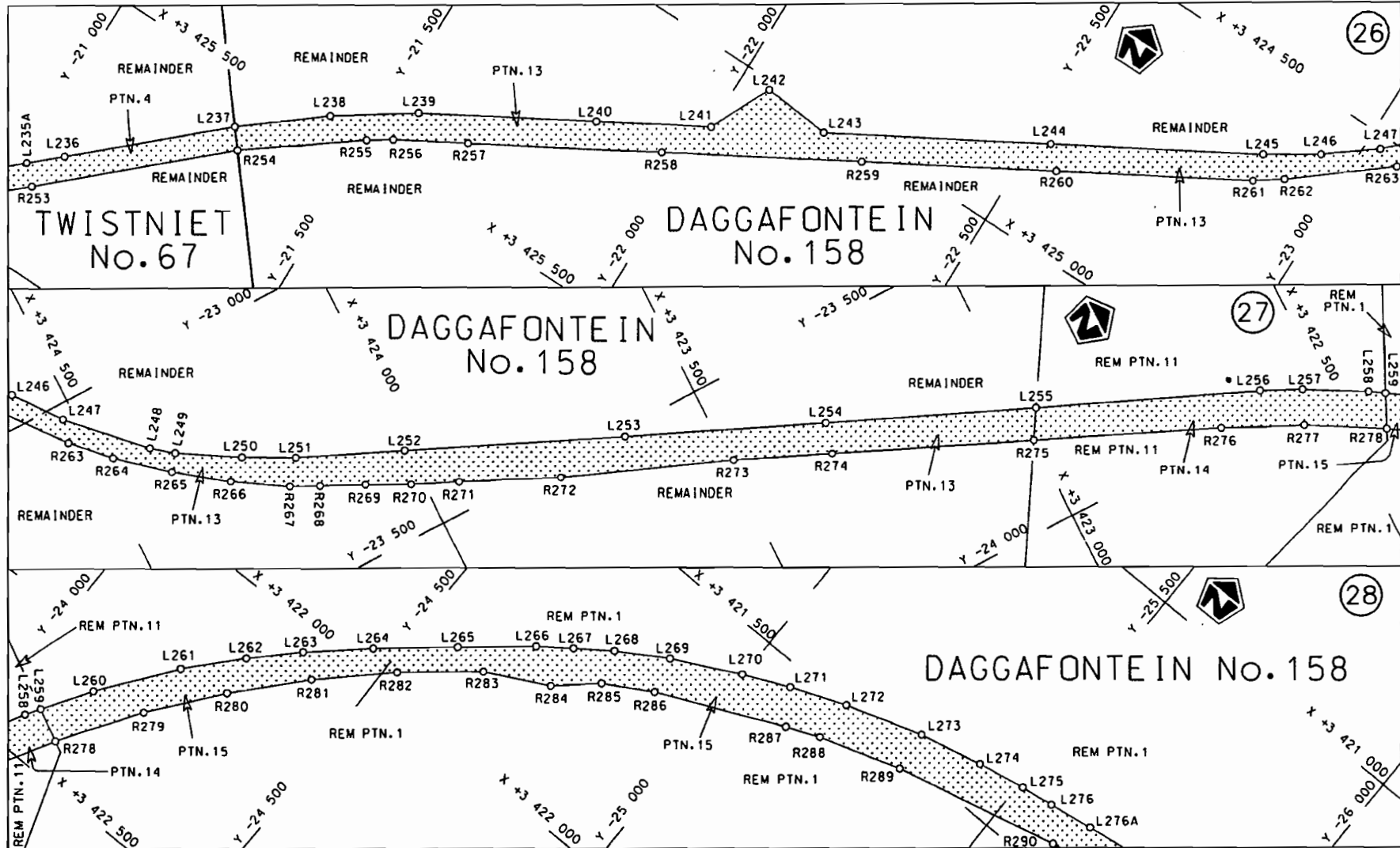
steldie padreserwe voor van 'n gedeelte
represents the road reserve of a portion
van Nasionale Roete of National Route N12
Seksie Section 6

Vel Sheet 9 van 27
Plan P727/08

D.O.9.A

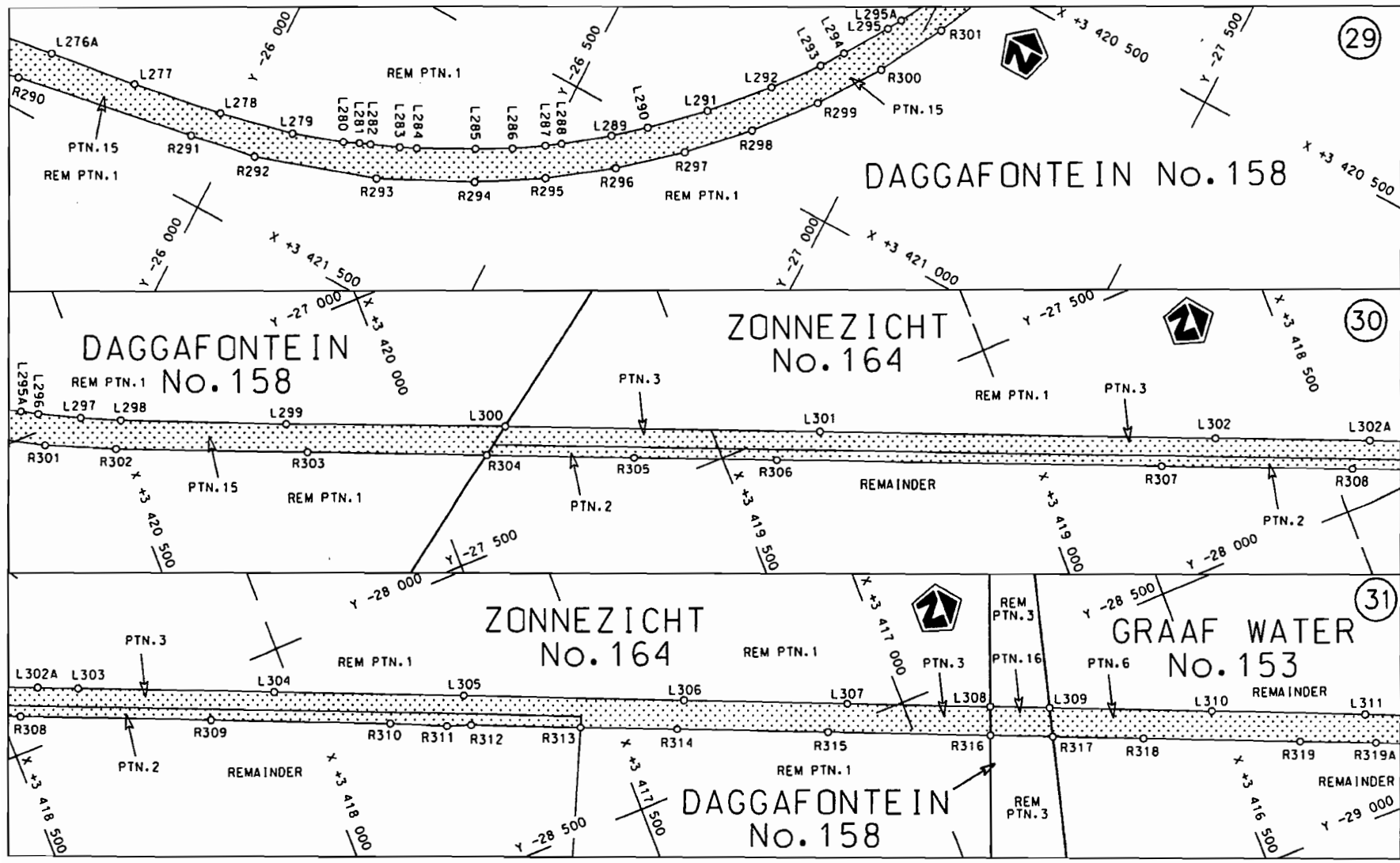
STAATSKOERANT, 15 OKTOBER 2010

No. 33630 13



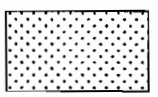
Suid-Afrikaanse Padogenskap Bpk. South African National Roads Agency Ltd.	Die figuur getoon The figure shown <div style="display: inline-block; width: 20px; height: 20px; background: repeating-linear-gradient(45deg, transparent, transparent 2px, black 2px, black 4px); border: 1px solid black; margin: 5px;"></div>	steldie padreserwe voor van 'n gedeelte represents the road reserve of a portion von Nasionale Roete N12 Seksie of National Route Section 6	Vel 10 van Sheet 10 of 27 Plan P727/08
--	---	--	--

D.O.9.A



Suid-Afrikaanse Padagentskap Bpk.
South African National Roads Agency Ltd.

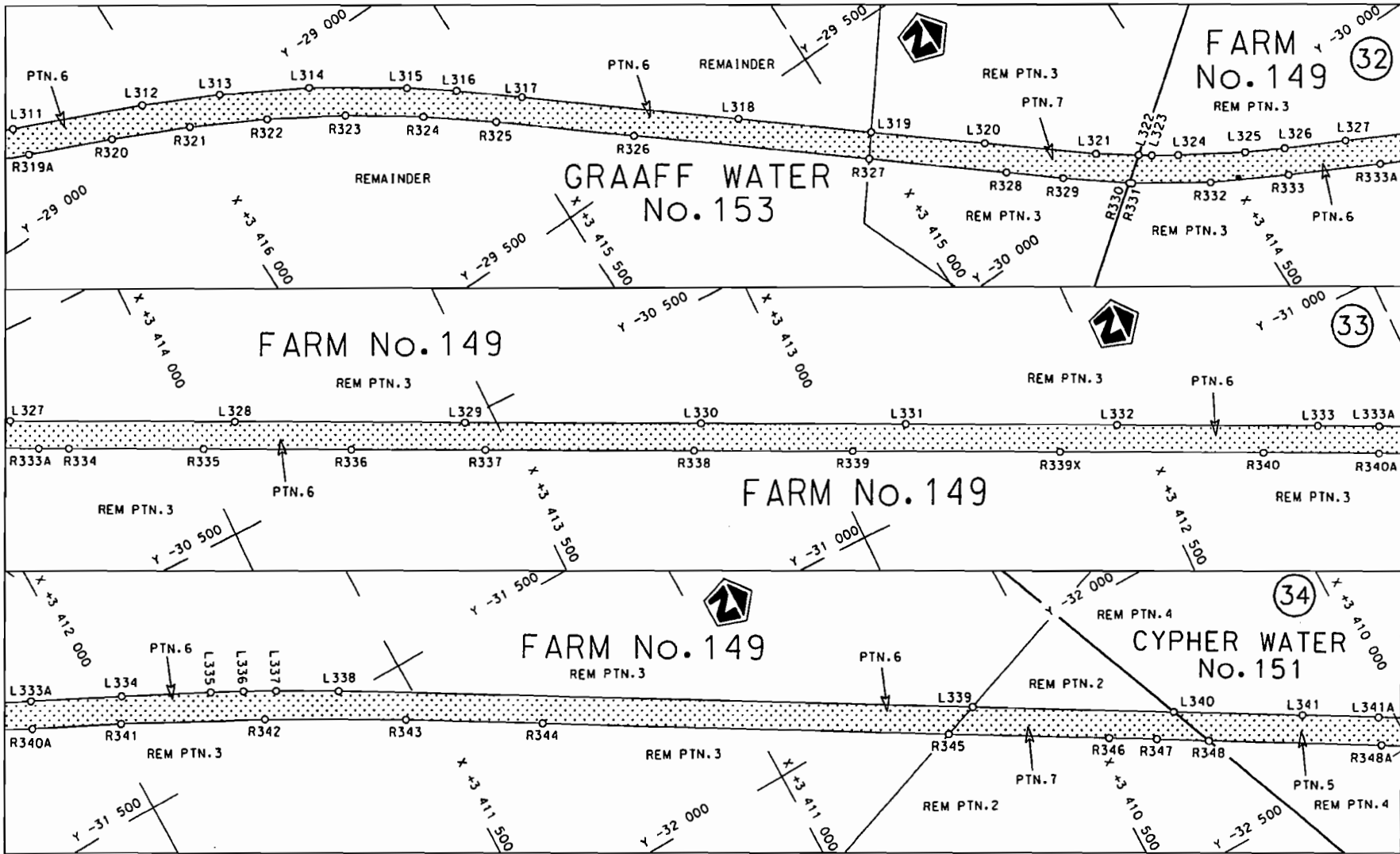
Die figuur getoon
The figure shown




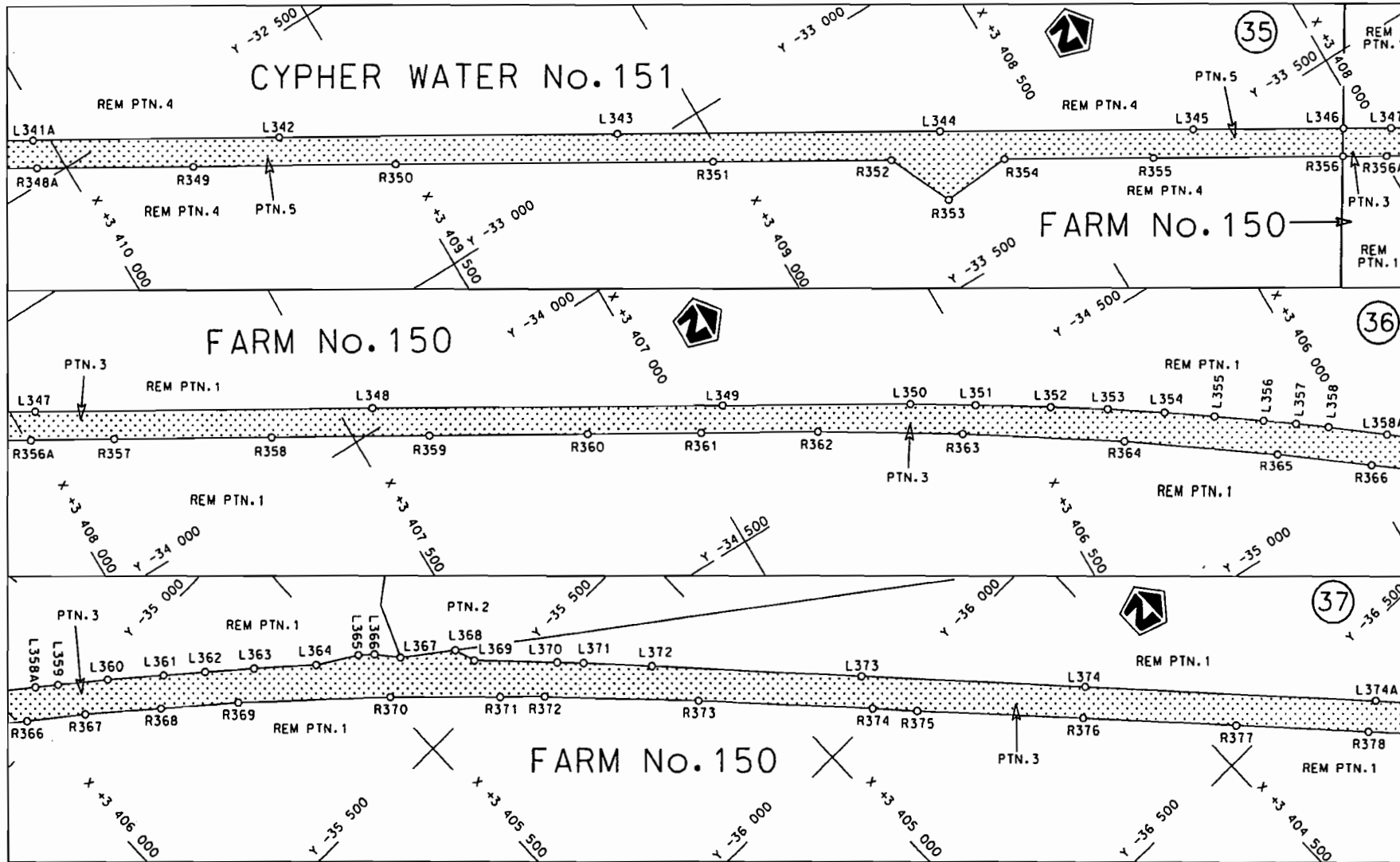
steldie padreserwe voor van 'n gedeelte
represents the road reserve of a portion
van Nasionale Roete N12 Seksie
of National Route N12 Section 6

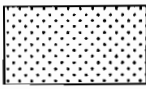
Vel Sheet 11 van of 27
Plan P727/08

D.O.9.A

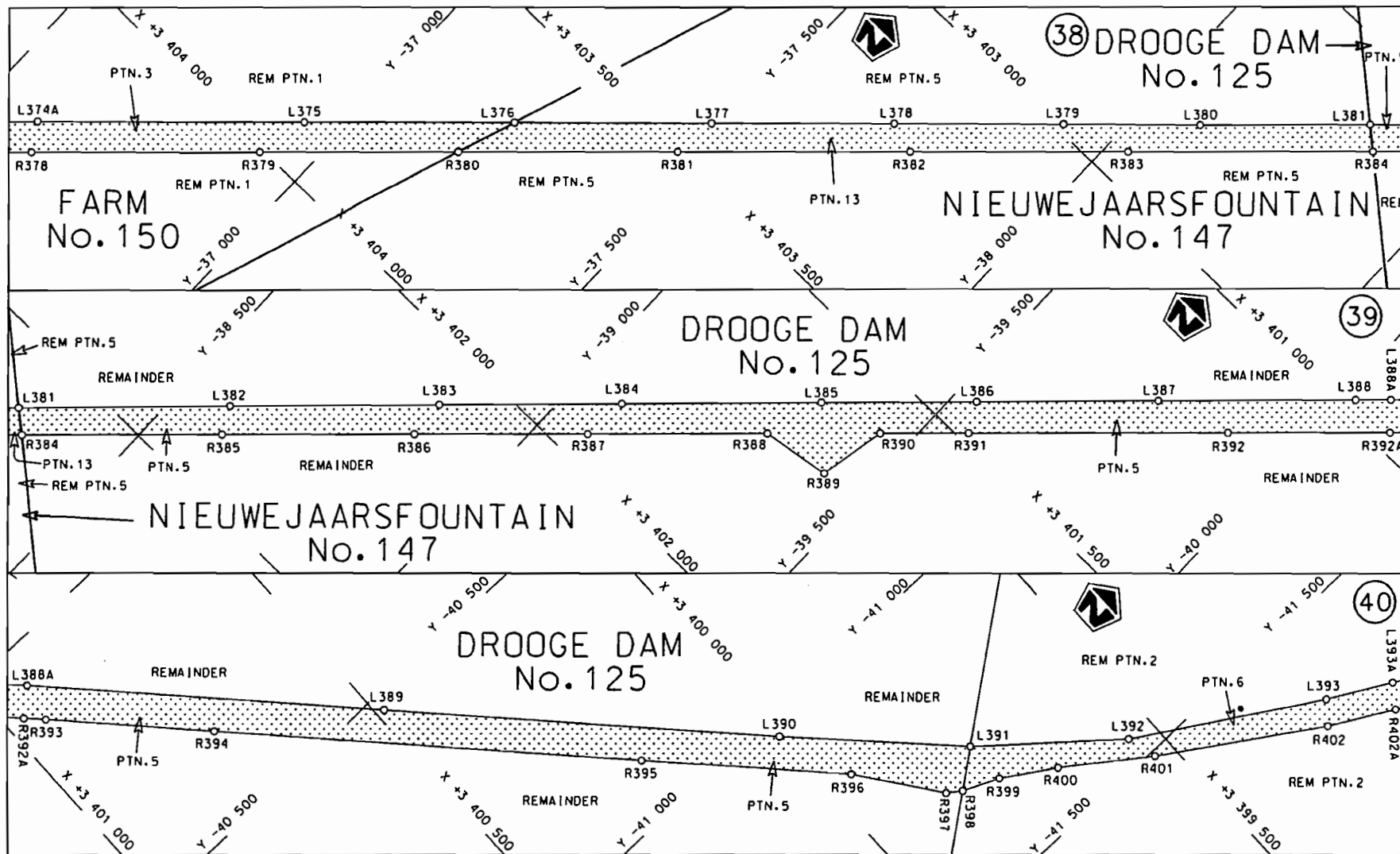



<p>Suid-Afrikaanse Padagentskap Bpk. South African National Roads Agency Ltd.</p>	<p>Die figuur getoon The figure shown</p> 	<p>steldie podreserwe voor van 'n gedeelte represents the road reserve of a portion van Nasionale Roete N12 of National Route N12</p> <p>Seksie Section 6</p>	<p>Vel Sheet 12 van of 27 Plan P727/08</p>
---	--	---	--



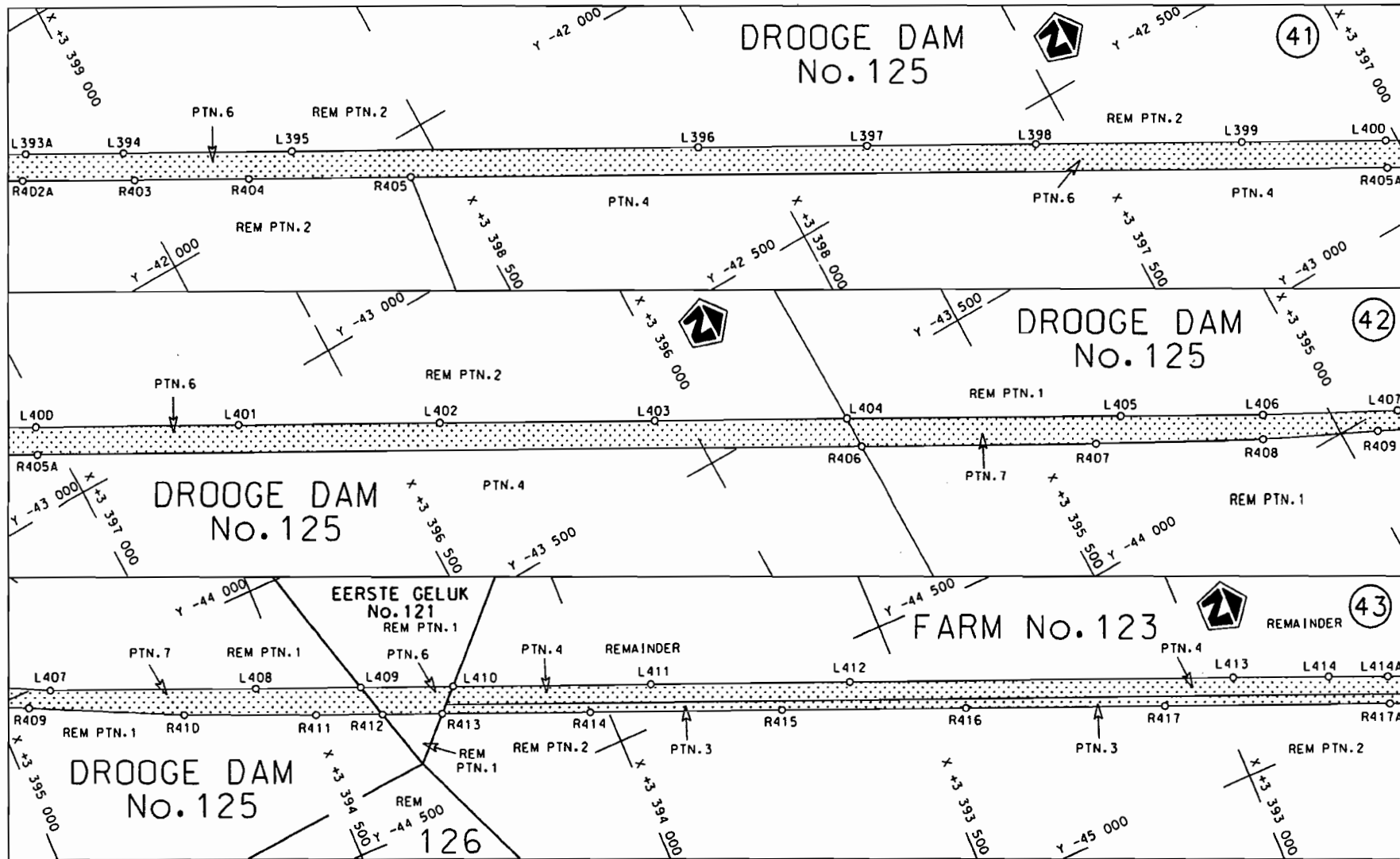
Suid-Afrikaanse Padagentskap Bpk. South African National Roads Agency Ltd.	Die figuur getoon The figure shown	 steldie padreserwe voor van 'n gedeelte represents the road reserve of a portion van Nasionale Roete of National Route	Vel Sheet 13 van of 27 Plan P727/08
---	---------------------------------------	---	---

D.O.9.A



<p>Suid-Afrikaanse Padagentskap Bpk. South African National Roads Agency Ltd.</p>	<p>Die figuur getoon The figure shown</p> 	<p>steldie padreserve voor van 'n gedeelte represents the road reserve of a portion von Nasionale Roete N12 Seksie of National Route 6 Section</p>	<p>Vel Sheet 14 van of 27 Plan P727/08</p>
---	--	--	--

D.O.9.A



Suid-Afrikaanse Padogentskap Bpk.
South African National Roads Agency Ltd.

Die figuur getoon
The figure shown



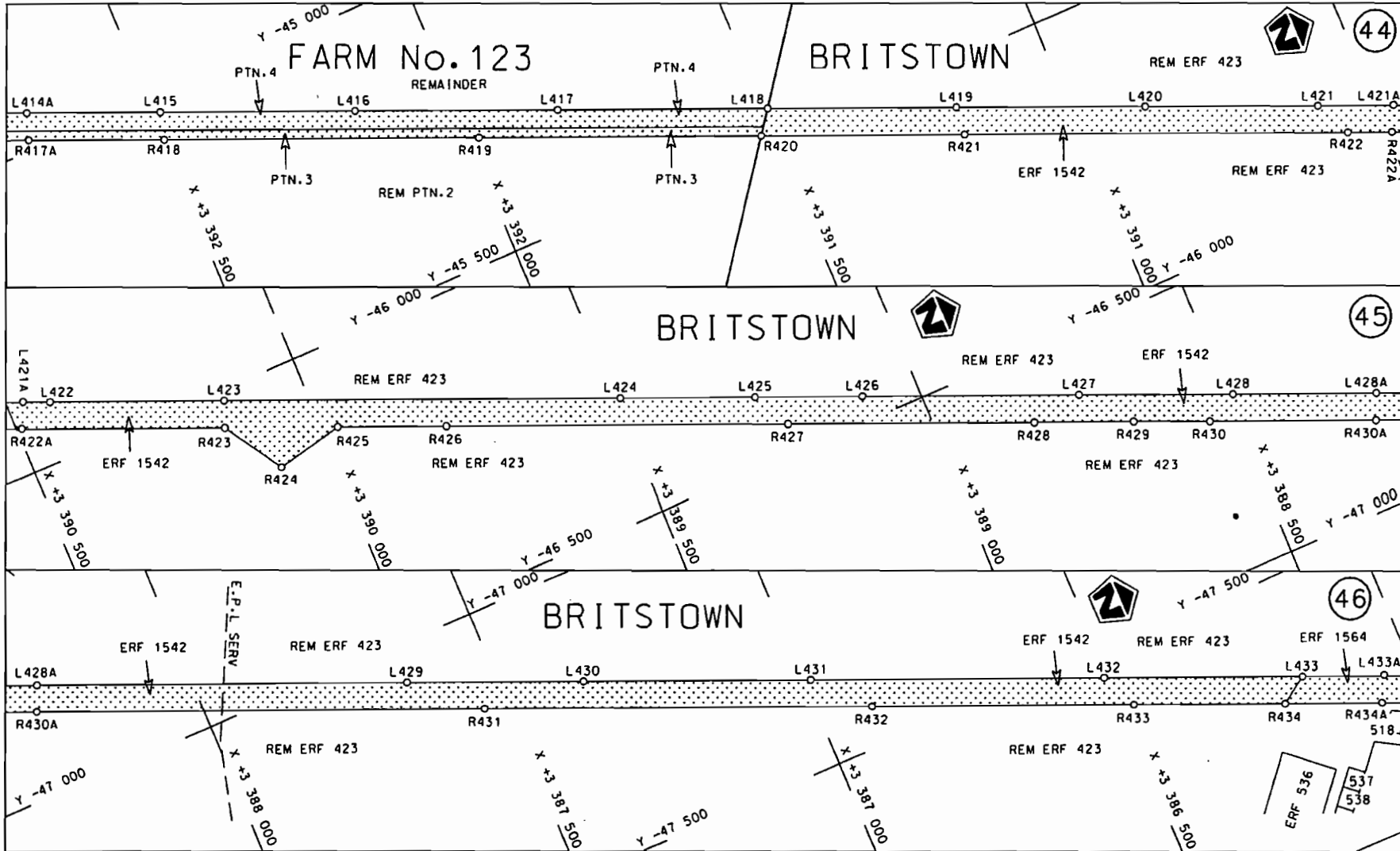
stel die padreserwe voor van 'n gedeelte
represents the road reserve of a portion
van Nasionale Roete N12 Seksie
of National Route N12 Section 6


Vel Sheet 15 van 27
Plan P727/08

D.O.9.A

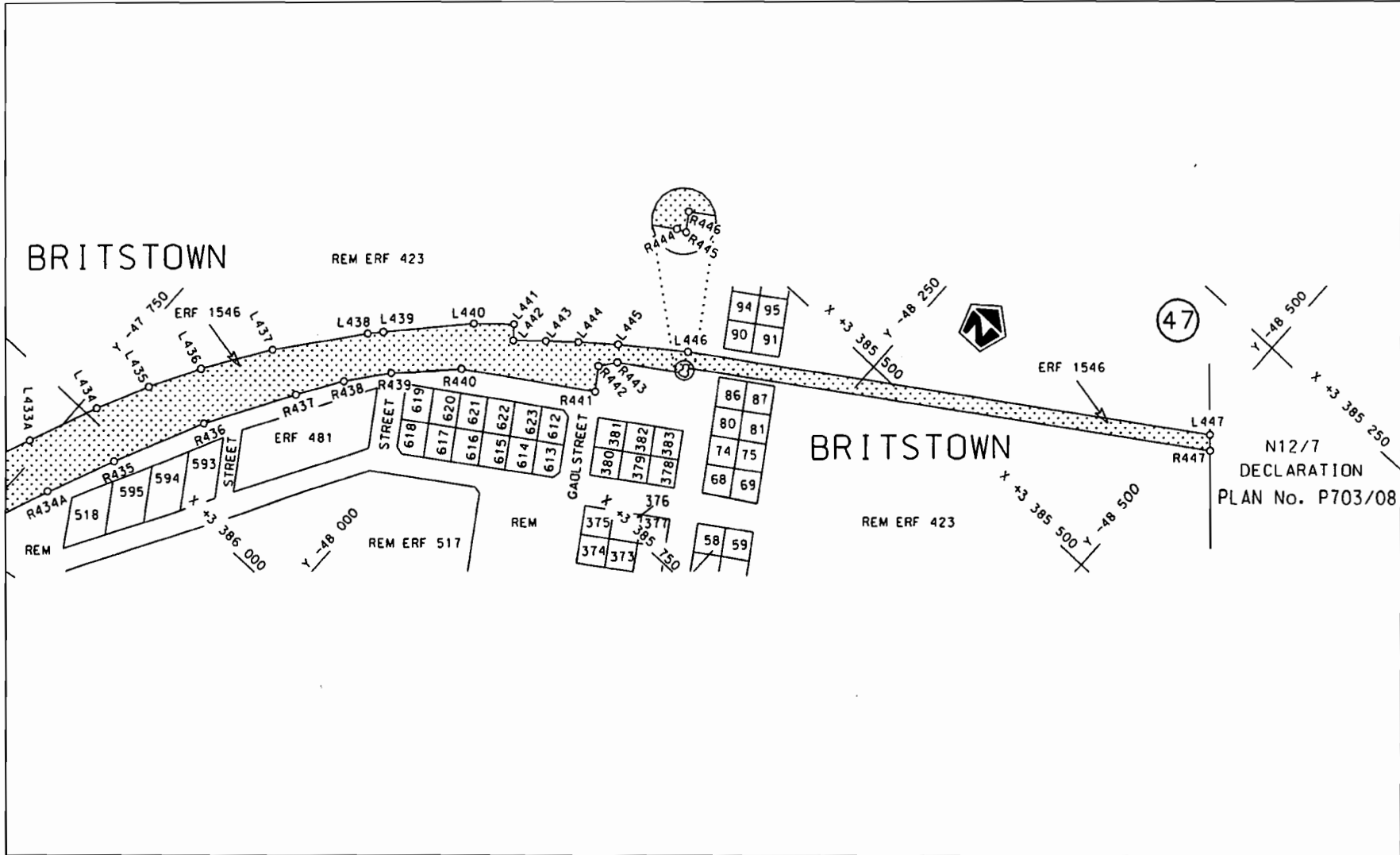
STAATSKOERANT, 15 OKTOBER 2010

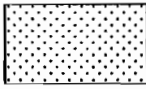
No. 33630 19



<p>Suid-Afrikaanse Padogentskap Bpk. South African National Roads Agency Ltd.</p>	<p>Die figuur getoon The figure shown</p> 	<p>stel die padreserwe voor van 'n gedeelte represents the road reserve of a portion van Nasionale Roete N12 Sektie of National Route N12 Section 6</p>	<p>Vel Sheet 16 van 27 of of Plan P727/08</p>
---	--	---	---

D.O.9.A



Suid-Afrikaanse Padagentskap Bpk. South African National Roads Agency Ltd.	Die figuur getoon The figure shown	 steldie padreserwe voor van 'n gedeelte represents the road reserve of a portion van Nasionale Roete of National Route	Vel Sheet 17 of 27 Plan P727/08
N12 Seksie Section 6			6

D.O.9.A

PADRESERWE KOÖRDINATE				ROAD RESERVE CO-ORDINATES			
LINKERKANT/LEFT HAND SIDE				REGTERKANT/RIGHT HAND SIDE			
WG 23°				X			
AL1	-11	280.13	3 476 019.08	AR1	-11	301.61	3 476 029.22
AL2	-11	277.04	3 476 015.12	AR2	-11	297.16	3 476 022.36
AL3	-11	265.23	3 475 999.76	AR3	-11	286.75	3 476 007.53
AL4	-11	248.65	3 475 978.90	AR4	-11	275.49	3 475 993.46
AL5	-11	235.49	3 475 963.66	AR5	-11	263.78	3 475 978.50
AL6	-11	196.38	3 475 925.54	AR6	-11	252.16	3 475 964.76
AL7	-11	190.82	3 475 919.11	AR7	-11	244.50	3 475 955.51
AL8	-11	184.56	3 475 911.88	AR8	-11	244.23	3 475 953.87
AL9	-11	174.96	3 475 897.26	AR9	-11	205.38	3 475 902.82
AL10	-11	165.16	3 475 878.44	AR10	-11	194.97	3 475 887.90
AL11	-11	163.51	3 475 872.25	AR11	-11	186.35	3 475 871.26
AL12	-11	157.08	3 475 854.56	AR12	-11	183.75	3 475 869.72
AL13	-11	156.30	3 475 850.54	AR13	-11	177.26	3 475 851.25
AL14	-11	153.90	3 475 838.13	AR14	-11	174.11	3 475 837.21
AL15	-11	152.31	3 475 821.43	AR15	-11	172.43	3 475 822.59
AL16	-11	152.27	3 475 808.29	AR16	-11	172.39	3 475 805.66
AL17	-11	158.97	3 475 578.28	AR17	-11	173.35	3 475 774.19
AL18	-11	163.60	3 475 544.19	AR18	-11	173.92	3 475 755.34
AL19	-11	168.59	3 475 370.96	AR19	-11	174.88	3 475 723.87
AL20	-11	169.10	3 475 353.36	AR20	-11	175.84	3 475 692.40
AL21	-11	159.06	3 475 349.81	AR21	-11	176.77	3 475 660.93
L2	-11	165.99	3 475 140.72	AR22	-11	177.65	3 475 629.46
L3	-11	162.40	3 474 935.72	AR23	-11	178.71	3 475 597.99
L4	-11	146.02	3 474 782.93	AR24	-11	179.32	3 475 577.94
L5	-11	134.45	3 474 709.67	AR25	-11	176.14	3 475 546.40
L6	-11	074.81	3 474 428.45	AR26	-11	180.86	3 475 371.36
L7	-10	868.78	3 473 477.45	AR27	-11	181.34	3 475 353.86
L8	-10	739.40	3 472 882.54	AR28	-11	190.68	3 475 349.45
L9	-10	637.33	3 472 413.47	R2	-11	197.60	3 475 140.38
L10	-10	627.78	3 472 352.68	R3	-11	194.23	3 474 945.77
L11	-10	621.52	3 472 269.63	R4	-11	187.12	3 474 789.50
L12	-10	622.34	3 472 189.94	R5	-11	159.16	3 474 649.26
L13	-10	630.44	3 472 108.44	R6	-11	136.42	3 474 544.88
L14	-10	645.47	3 472 029.38	R7	-10	904.26	3 473 484.95
L15	-10	648.40	3 472 017.55	R8	-10	679.06	3 472 450.87
L16	-10	719.89	3 471 740.42	R9	-10	669.65	3 472 402.11
L17	-10	747.37	3 471 603.81	R10	-10	665.62	3 472 382.62
L18	-10	749.39	3 471 525.62	R11	-10	658.74	3 472 320.35
L19	-10	741.98	3 471 439.11	R12	-10	655.38	3 472 254.39
L20	-10	684.47	3 471 041.55	R13	-10	658.03	3 472 156.60
L21	-10	622.83	3 470 614.84	R14	-10	751.76	3 471 784.54
L22	-10	542.86	3 470 064.34	R15	-10	763.14	3 471 722.67
L23	-10	503.09	3 469 793.79	R16	-10	778.76	3 471 633.73
L24	-10	494.89	3 469 722.03	R17	-10	788.69	3 471 528.86
L25	-10	488.80	3 469 665.82	R18	-10	742.29	3 471 201.67
L26	-10	484.81	3 469 606.12	R19	-10	685.99	3 470 808.15
L27	-10	482.00	3 469 546.00	R20	-10	617.29	3 470 337.08
L28	-10	481.48	3 469 444.31	R21	-10	571.98	3 470 023.14
L29	-10	483.49	3 469 384.48	R22	-10	537.66	3 469 788.54
L30	-10	490.61	3 469 283.30	R23	-10	523.83	3 469 668.66
L31	-10	497.29	3 469 222.07	R24	-10	516.78	3 469 547.89

Vel	18	Van	27	P727/08
Sheet		of		

PADRESERWE KOÖRDINATE				/	ROAD RESERVE CO-ORDINATES			
LINKERKANT/LEFT HAND SIDE					REGTERKANT/RIGHT HAND SIDE			
				WG 23°	X			
L32	-10	502.49	3 469 182.78	R25	-10	516.52	3 469 429.23	
L33	-10	517.56	3 469 091.37	R26	-10	523.25	3 469 308.24	
L34	-10	601.43	3 468 644.40	R27	-10	532.67	3 469 220.14	
L35	-10	619.24	3 468 531.81	R28	-10	551.86	3 469 096.43	
L36	-10	632.52	3 468 397.82	R29	-10	636.53	3 468 646.09	
L37	-10	636.29	3 468 276.03	R30	-10	655.49	3 468 524.43	
L38	-10	635.68	3 467 610.01	R31	-10	667.17	3 468 406.16	
L39	-10	635.98	3 467 085.36	R32	-10	671.19	3 468 275.80	
L40	-10	636.19	3 466 651.73	R33	-10	670.77	3 468 062.74	
L41	-10	635.35	3 466 234.85	R34	-10	670.47	3 467 612.10	
L42	-10	634.96	3 465 797.15	R35	-10	669.80	3 467 183.22	
L43	-10	634.48	3 465 358.65	R36	-10	669.31	3 466 651.85	
L44	-10	564.93	3 465 227.67	R37	-10	669.20	3 466 405.10	
L45	-10	634.18	3 465 093.85	R38	-10	668.50	3 465 985.41	
L46	-10	634.02	3 464 998.23	R39	-10	668.21	3 465 727.18	
L47	-10	633.68	3 464 800.52	R40	-10	667.75	3 465 433.26	
L48	-10	633.40	3 464 635.43	R41	-10	667.71	3 465 046.26	
L49	-10	634.75	3 464 595.31	R42	-10	667.58	3 464 974.64	
L50	-10	639.61	3 464 543.89	R43	-10	667.02	3 464 669.59	
L51	-10	648.75	3 464 490.23	R44	-10	668.06	3 464 655.07	
L52	-10	653.50	3 464 467.44	R45	-10	679.34	3 464 497.87	
L53	-10	660.75	3 464 441.00	R46	-10	695.76	3 464 444.20	
L54	-10	672.67	3 464 402.76	R47	-10	711.23	3 464 393.63	
L55	-10	680.57	3 464 380.43	R48	-10	725.64	3 464 346.53	
L56	-10	695.40	3 464 342.80	R49	-10	808.82	3 464 204.45	
L57	-10	717.44	3 464 295.57	R50	-10	890.73	3 464 113.63	
L58	-10	741.66	3 464 251.83	R51	-11	067.96	3 463 931.64	
L59	-10	775.97	3 464 197.99	R52	-11	130.98	3 463 860.64	
L60	-10	814.57	3 464 148.68	R53	-11	244.05	3 463 749.14	
L61	-10	862.21	3 464 097.79	R54	-11	308.34	3 463 678.16	
L62	-11	127.55	3 463 821.61	R55	-11	366.25	3 463 600.96	
L63	-11	229.23	3 463 715.83	R56	-11	433.97	3 463 492.95	
L64	-11	273.38	3 463 666.69	R57	-11	474.67	3 463 412.58	
L65	-11	314.36	3 463 615.15	R58	-11	510.59	3 463 328.75	
L66	-11	353.28	3 463 560.66	R59	-11	540.17	3 463 236.19	
L67	-11	388.97	3 463 503.71	R60	-11	560.97	3 463 153.20	
L68	-11	421.93	3 463 443.85	R61	-11	578.09	3 463 059.83	
L69	-11	451.32	3 463 383.17	R62	-11	610.40	3 462 692.03	
L70	-11	477.16	3 463 320.21	R63	-11	688.37	3 462 599.35	
L71	-11	499.64	3 463 255.60	R64	-11	628.15	3 462 491.71	
L72	-11	517.73	3 463 191.96	R65	-11	657.30	3 462 157.88	
L73	-11	532.60	3 463 125.01	R66	-11	687.59	3 461 810.33	
L74	-11	543.32	3 463 059.62	R67	-11	710.58	3 461 542.56	
L75	-11	551.82	3 462 979.02	R68	-11	715.23	3 461 484.35	
L76	-11	611.83	3 462 293.44	R69	-11	720.05	3 461 409.14	
L77	-11	641.28	3 461 955.51	R70	-11	723.25	3 461 286.79	
L78	-11	678.08	3 461 532.63	R71	-11	721.41	3 461 164.35	
L79	-11	685.76	3 461 429.76	R72	-11	715.35	3 461 041.81	
L80	-11	688.53	3 461 353.72	R73	-11	709.44	3 460 976.15	
L81	-11	689.70	3 461 261.14	R74	-11	704.39	3 460 921.08	
L82	-11	688.79	3 461 186.02	R75	-11	684.23	3 460 776.47	

Vel	19	Van	27	P727/08
Sheet		of		

PADRESERWE KOÖRDINATE				/	ROAD RESERVE CO-ORDINATES			
LINKERKANT/LEFT HAND SIDE					REGTERKANT/RIGHT HAND SIDE			
				WG 23°	X			
L83	-11	684.81	3 461 091.21	R76	-11	678.82	3 460 742.67	
L84	-11	678.83	3 461 008.42	R77	-11	666.99	3 460 675.13	
L85	-11	669.14	3 460 911.69	R78	-11	617.20	3 460 416.37	
L86	-11	656.39	3 460 815.06	R79	-11	552.66	3 460 081.93	
L87	-11	640.75	3 460 719.40	R80	-11	494.07	3 459 778.82	
L88	-11	611.54	3 460 565.67	R81	-11	412.61	3 459 355.85	
L89	-11	527.07	3 460 127.49	R82	-11	294.33	3 458 739.73	
L90	-11	357.00	3 459 246.03	R83	-11	279.62	3 458 659.91	
L91	-11	272.18	3 458 805.09	R84	-11	265.51	3 458 572.86	
L92	-11	253.56	3 458 703.43	R85	-11	208.33	3 458 178.86	
L93	-11	232.30	3 458 577.44	R86	-11	140.95	3 457 696.02	
L94	-11	215.36	3 458 466.41	R87	-11	063.89	3 457 145.21	
L95	-11	168.26	3 458 132.57	R88	-10	885.67	3 455 886.25	
L96	-11	110.66	3 457 723.81	R89	-10	820.96	3 455 428.53	
L97	-11	048.70	3 457 283.69	R90	-10	770.27	3 455 068.40	
L98	-10	924.64	3 456 402.29	R91	-10	666.79	3 454 335.03	
L99	-10	862.15	3 455 959.86	R92	-10	602.73	3 453 879.25	
L100	-10	799.94	3 455 518.88	R93	-10	593.58	3 453 800.09	
L101	-10	736.36	3 455 067.42	R94	-10	588.32	3 453 719.90	
L102	-10	685.72	3 454 707.96	R95	-10	587.22	3 453 616.14	
L103	-10	634.02	3 454 341.31	R96	-10	589.50	3 453 538.07	
L104	-10	571.11	3 453 895.45	R97	-10	595.29	3 453 455.11	
L105	-10	561.44	3 453 812.77	R98	-10	611.45	3 453 264.76	
L106	-10	554.55	3 453 730.02	R99	-10	636.39	3 452 959.28	
L107	-10	552.12	3 453 646.51	R100	-10	667.37	3 452 577.72	
L108	-10	554.79	3 453 562.72	R101	-10	778.64	3 451 223.09	
L109	-10	560.51	3 453 478.23	R102	-10	815.32	3 450 778.19	
L110	-10	577.39	3 453 271.22	R103	-10	832.76	3 450 562.26	
L111	-10	601.65	3 452 972.78	R104	-10	862.65	3 450 202.85	
L112	-10	634.43	3 452 570.55	R105	-10	877.88	3 450 010.11	
L113	-10	745.29	3 451 209.40	R106	-10	918.18	3 449 494.62	
L114	-10	782.38	3 450 754.77	R107	-10	931.40	3 449 349.55	
L115	-10	826.95	3 450 192.46	R108	-10	949.31	3 449 160.71	
L116	-10	861.63	3 449 769.02	R109	-10	955.33	3 449 117.52	
L117	-10	904.18	3 449 265.71	R110	-10	962.20	3 449 074.35	
L118	-10	926.48	3 449 092.34	R111	-10	969.78	3 449 031.12	
L119	-10	954.27	3 448 949.85	R112	-10	980.95	3 448 971.97	
L120	-10	971.22	3 448 864.67	R113	-10	996.64	3 448 895.84	
L121	-11	074.25	3 448 342.77	R114	-11	021.19	3 448 772.11	
L122	-11	222.23	3 447 591.75	R115	-11	094.93	3 448 395.06	
L123	-11	244.04	3 447 467.89	R116	-11	180.57	3 447 958.59	
L124	-11	260.36	3 447 343.52	R117	-11	208.65	3 447 815.32	
L125	-11	271.82	3 447 216.57	R118	-11	267.46	3 447 515.00	
L126	-11	278.28	3 447 054.33	R119	-11	276.80	3 447 458.16	
L127	-11	277.27	3 446 923.14	R120	-11	285.07	3 447 401.44	
L127X	-11	270.59	3 446 790.37	R121	-11	291.81	3 447 344.20	
L128	-11	255.62	3 446 639.14	R122	-11	296.04	3 447 301.50	
L129	-11	214.66	3 446 280.24	R123	-11	301.34	3 447 244.22	
L130	-11	211.38	3 446 227.13	R124	-11	304.82	3 447 196.95	
L131	-11	213.90	3 446 156.66	R125	-11	308.04	3 447 138.17	
L132	-11	227.88	3 446 071.96	R126	-11	309.77	3 447 095.12	
				Vel	20	Van	27	P727/08
				Sheet		of		

PADRESERWE KOÖRDINATE			ROAD RESERVE CO-ORDINATES		
LINKERKANT/LEFT HAND SIDE			REGTERKANT/RIGHT HAND SIDE		
			WG 23°	X	
L133	-11	244.14	3 445 996.47	R127	-11 310.36 3 447 038.03
L134	-11	262.22	3 445 945.88	R128	-11 309.27 3 446 923.36
L135	-11	269.69	3 445 932.07	R129	-11 306.65 3 446 851.63
L136	-11	303.94	3 445 888.33	R130	-11 304.80 3 446 823.17
L137	-11	417.00	3 445 708.22	R131	-11 295.29 3 446 693.47
L138	-11	691.11	3 445 272.39	R132	-11 268.24 3 446 463.93
L139	-11	811.45	3 445 078.57	R133	-11 253.06 3 446 335.01
L140	-11	867.71	3 444 979.16	R134	-11 246.77 3 446 262.49
L141	-11	913.70	3 444 890.78	R135	-11 244.93 3 446 188.76
L142	-11	963.15	3 444 787.94	R136	-11 250.01 3 446 131.31
L143	-12	009.83	3 444 681.53	R137	-11 266.08 3 446 054.51
L144	-11	996.35	3 444 531.47	R138	-11 280.92 3 446 014.28
L145	-12	096.49	3 444 456.51	R139	-11 302.98 3 445 964.09
L146	-12	256.76	3 444 033.16	R140	-11 309.91 3 445 950.69
L147	-12	745.23	3 442 743.59	R141	-11 326.21 3 445 916.06
L148	-12	956.09	3 442 186.43	R142	-11 332.39 3 445 905.57
L149	-13	177.13	3 441 602.72	R143	-11 443.93 3 445 727.40
L150	-13	477.27	3 440 809.78	R144	-11 509.22 3 445 623.57
L151	-13	638.60	3 440 384.23	R145	-11 585.90 3 445 501.44
L152	-13	956.62	3 439 544.41	R146	-11 708.17 3 445 306.91
L153	-14	044.94	3 439 311.42	R147	-11 793.24 3 445 171.77
L154	-14	065.07	3 439 259.05	R148	-11 840.04 3 445 094.29
L155	-14	086.49	3 439 207.28	R149	-11 859.39 3 445 060.64
L156	-14	108.90	3 439 156.32	R150	-11 894.60 3 444 998.40
L157	-14	136.00	3 439 097.32	R151	-11 934.69 3 444 922.80
L158	-14	181.50	3 439 010.02	R152	-11 960.22 3 444 871.27
L159	-14	231.72	3 438 923.43	R153	-11 972.53 3 444 845.35
L160	-14	281.30	3 438 848.36	R154	-12 008.50 3 444 767.21
L161	-14	303.30	3 438 814.82	R155	-12 019.54 3 444 741.48
L162	-14	348.74	3 438 752.94	R156	-12 052.82 3 444 661.54
L163	-14	403.99	3 438 681.34	R157	-12 110.10 3 444 513.24
L164	-14	460.80	3 438 615.74	R158	-12 284.84 3 444 052.78
L165	-14	535.48	3 438 536.43	R159	-12 444.15 3 443 632.17
L166	-14	602.49	3 438 471.26	R160	-12 607.31 3 443 201.70
L167	-14	609.48	3 438 465.17	R161	-12 781.20 3 442 742.02
L168	-14	673.10	3 438 408.48	R162	-12 971.02 3 442 240.58
L169	-14	782.48	3 438 320.10	R163	-13 119.46 3 441 847.68
L170	-14	850.10	3 438 265.35	R164	-13 220.22 3 441 779.54
L171	-14	947.90	3 438 187.97	R165	-13 189.80 3 441 662.09
L172	-14	998.77	3 438 139.90	R166	-13 285.32 3 441 410.02
L173	-15	041.75	3 438 084.70	R167	-13 438.90 3 441 006.52
L174	-15	071.65	3 438 037.35	R168	-13 568.72 3 440 665.12
L175	-15	095.69	3 437 986.54	R169	-13 673.94 3 440 387.41
L176	-15	111.64	3 437 918.17	R170	-13 783.13 3 440 098.96
L177	-15	120.46	3 437 834.40	R171	-13 951.28 3 439 654.85
L178	-15	122.71	3 437 795.96	R172	-14 081.64 3 439 309.69
L179	-15	126.46	3 437 732.06	R173	-14 099.52 3 439 261.81
L180	-15	134.34	3 437 275.58	R174	-14 118.75 3 439 211.09
L181	-15	140.21	3 436 927.47	R175	-14 157.20 3 439 133.17
L182	-15	145.57	3 436 607.12	R176	-14 202.86 3 439 040.95
L183	-15	149.71	3 436 365.17	R177	-14 279.95 3 438 908.53

Vel	21	Van	27	P727/08
Sheet		of		

PADRESERWE KOÖRDINATE				/	ROAD RESERVE CO-ORDINATES			
LINKERKANT/LEFT HAND SIDE					REGTERKANT/RIGHT HAND SIDE			
				WG 23°	X			
L184	-15	154.94	3 436 074.29	R178	-14	312.86	3 438 859.57	
L185	-15	157.18	3 435 940.60	R179	-14	358.43	3 438 792.81	
L186	-15	160.35	3 435 676.79	R180	-14	398.09	3 438 740.80	
L187	-15	158.90	3 435 553.77	R181	-14	441.22	3 438 689.55	
L188	-15	158.49	3 435 519.62	R182	-14	496.44	3 438 623.98	
L189	-15	147.92	3 435 363.01	R183	-14	609.81	3 438 508.21	
L190	-15	117.67	3 435 206.71	R184	-14	732.28	3 438 400.38	
L190X	-15	103.08	3 435 050.43	R185	-14	747.33	3 438 388.03	
L191	-15	016.26	3 434 655.54	R186	-14	847.71	3 438 309.97	
L192	-15	003.93	3 434 617.31	R187	-14	879.58	3 438 284.33	
L193	-14	992.08	3 434 560.62	R188	-14	987.43	3 438 196.09	
L194	-14	980.47	3 434 487.35	R189	-15	025.11	3 438 160.53	
L195	-14	936.60	3 434 190.09	R190	-15	056.65	3 438 123.72	
L196	-14	932.01	3 434 135.21	R191	-15	084.25	3 438 083.66	
L197	-14	934.02	3 434 065.26	R192	-15	111.78	3 438 034.09	
L198	-14	937.94	3 434 024.18	R193	-15	132.49	3 437 981.41	
L199	-14	948.71	3 433 963.58	R194	-15	150.80	3 437 913.19	
L200	-14	971.49	3 433 891.15	R195	-15	155.59	3 437 842.93	
L201	-15	004.03	3 433 819.07	R196	-15	156.79	3 437 752.82	
L202	-15	048.86	3 433 741.96	R197	-15	160.10	3 437 514.08	
L203	-15	221.42	3 433 449.23	R198	-15	162.65	3 437 330.99	
L204	-15	506.11	3 432 966.38	R199	-15	165.02	3 437 255.76	
L205	-15	670.64	3 432 687.56	R200	-15	166.55	3 437 114.21	
L206	-15	868.13	3 432 352.83	R201	-15	169.64	3 436 925.20	
L207	-16	043.59	3 432 055.87	R202	-15	174.91	3 436 613.39	
L208	-16	217.33	3 431 762.22	R203	-15	179.33	3 436 354.09	
L209	-16	407.94	3 431 439.50	R204	-15	194.04	3 435 579.81	
L210	-16	600.40	3 431 112.83	R205	-15	188.06	3 435 369.63	
L211	-16	789.91	3 430 791.41	R206	-15	170.93	3 435 210.23	
L212	-16	943.27	3 430 530.95	R207	-15	151.80	3 435 080.83	
L213	-17	091.53	3 430 279.68	R208	-15	138.62	3 435 004.71	
L214	-17	172.83	3 430 141.90	R209	-15	055.87	3 434 615.62	
L215	-17	337.43	3 429 862.72	R210	-14	990.08	3 434 295.67	
L216	-17	501.68	3 429 583.62	R211	-14	990.37	3 434 169.33	
L217	-17	691.17	3 429 261.76	R212	-15	002.60	3 434 064.98	
L218	-17	887.19	3 428 929.52	R213	-15	036.89	3 433 965.68	
L219	-18	094.10	3 428 581.09	R214	-15	055.70	3 433 861.84	
L220	-18	184.50	3 428 438.62	R215	-15	096.02	3 433 764.77	
L221	-18	294.80	3 428 289.14	R216	-15	146.42	3 433 669.79	
L222	-18	370.09	3 428 199.77	R217	-15	288.37	3 433 436.78	
L223	-18	449.93	3 428 119.51	R218	-15	306.45	3 433 398.87	
L224	-18	538.60	3 428 040.75	R219	-15	450.11	3 433 154.98	
L225	-18	670.74	3 427 922.36	R220	-15	592.50	3 432 913.67	
L226	-18	878.40	3 427 736.04	R221	-15	754.45	3 432 638.95	
L227	-19	118.72	3 427 520.51	R222	-15	887.17	3 432 414.30	
L228	-19	342.03	3 427 320.05	R223	-16	039.34	3 432 156.64	
L229	-19	565.42	3 427 119.77	R224	-16	338.79	3 431 649.47	
L230	-19	788.82	3 426 919.37	R225	-16	449.63	3 431 598.80	
L231	-20	010.10	3 426 721.03	R226	-16	440.33	3 431 477.18	
L232	-20	155.49	3 426 591.26	R227	-16	639.34	3 431 140.11	
L233	-20	275.06	3 426 483.18	R228	-16	839.55	3 430 800.75	

Vel	22	Van	27	P727/08
Sheet		of		

PADRESERWE KOÖRDINATE				ROAD RESERVE CO-ORDINATES			
LINKERKANT/LEFT HAND SIDE				REGTERKANT/RIGHT HAND SIDE			
WG 23°				X			
L234	-20	652.44	3 426 144.82	R229	-17	009.61	3 430 512.56
L235	-20	846.15	3 425 971.42	R230	-17	147.24	3 430 279.28
L236	-21	054.44	3 425 784.32	R231	-17	201.79	3 430 186.83
L237	-21	283.85	3 425 578.05	R232	-17	383.85	3 429 878.35
L238	-21	416.98	3 425 472.15	R233	-17	553.04	3 429 591.64
L239	-21	548.55	3 425 382.44	R234	-17	707.25	3 429 330.52
L240	-21	822.05	3 425 226.23	R235	-18	030.76	3 428 782.38
L241	-22	000.45	3 425 125.12	R236	-18	196.35	3 428 501.70
L242	-22	052.99	3 425 014.92	R237	-18	258.72	3 428 403.64
L243	-22	174.47	3 425 026.44	R238	-18	356.87	3 428 279.80
L244	-22	527.68	3 424 826.50	R239	-18	477.59	3 428 162.29
L245	-22	855.64	3 424 640.14	R240	-18	498.55	3 428 141.88
L246	-22	943.04	3 424 585.14	R241	-18	716.49	3 427 942.51
L247	-23	025.91	3 424 521.54	R242	-19	016.52	3 427 673.56
L248	-23	141.73	3 424 406.07	R243	-19	227.74	3 427 483.94
L249	-23	170.07	3 424 369.71	R244	-19	316.79	3 427 404.01
L250	-23	231.07	3 424 267.31	R245	-19	542.97	3 427 200.58
L251	-23	275.72	3 424 182.72	R246	-19	705.06	3 427 055.27
L252	-23	354.40	3 424 003.68	R247	-19	920.92	3 426 861.69
L253	-23	511.58	3 423 645.65	R248	-20	181.25	3 426 628.62
L254	-23	655.16	3 423 317.24	R249	-20	233.89	3 426 580.65
L255	-23	804.27	3 422 971.80	R250	-20	346.56	3 426 479.06
L256	-23	960.01	3 422 604.97	R251	-20	502.57	3 426 338.17
L257	-23	993.13	3 422 536.89	R252	-20	800.48	3 426 069.04
L258	-24	050.21	3 422 434.83	R253	-21	032.71	3 425 859.30
L259	-24	066.18	3 422 409.77	R254	-21	309.51	3 425 609.78
L260	-24	119.65	3 422 325.92	R255	-21	495.57	3 425 471.62
L261	-24	215.88	3 422 197.35	R256	-21	534.82	3 425 445.52
L262	-24	294.72	3 422 109.26	R257	-21	650.65	3 425 379.67
L263	-24	366.21	3 422 037.23	R258	-21	949.28	3 425 209.53
L264	-24	460.50	3 421 952.88	R259	-22	258.89	3 425 032.88
L265	-24	575.75	3 421 855.88	R260	-22	560.96	3 424 860.64
L266	-24	681.96	3 421 767.34	R261	-22	864.89	3 424 688.33
L267	-24	735.05	3 421 727.76	R262	-22	911.10	3 424 656.51
L268	-24	794.13	3 421 685.69	R263	-23	066.88	3 424 531.45
L269	-24	879.65	3 421 633.57	R264	-23	127.12	3 424 472.18
L270	-24	996.66	3 421 572.45	R265	-23	197.37	3 424 390.37
L271	-25	076.37	3 421 535.76	R266	-23	261.17	3 424 304.72
L272	-25	173.26	3 421 496.79	R267	-23	317.48	3 424 216.09
L273	-25	309.01	3 421 452.22	R268	-23	341.41	3 424 168.14
L274	-25	422.81	3 421 424.82	R269	-23	377.24	3 424 093.87
L275	-25	508.05	3 421 407.87	R270	-23	414.33	3 424 021.51
L276	-25	566.57	3 421 399.37	R271	-23	449.59	3 423 943.43
L277	-25	799.93	3 421 363.97	R272	-23	524.85	3 423 779.73
L278	-25	959.77	3 421 337.13	R273	-23	638.05	3 423 492.19
L279	-26	090.46	3 421 307.37	R274	-23	708.04	3 423 331.28
L280	-26	177.34	3 421 278.06	R275	-23	852.26	3 423 000.74
L281	-26	203.40	3 421 266.49	R276	-23	985.52	3 422 695.75
L282	-26	221.35	3 421 259.45	R277	-24	049.31	3 422 562.36
L283	-26	269.81	3 421 239.83	R278	-24	121.85	3 422 436.02
L284	-26	297.55	3 421 227.18	R279	-24	212.61	3 422 298.05

Vel	23	Van	27	P727/08
Sheet		of		

PADRESERWE KOÖRDINATE				/ ROAD RESERVE CO-ORDINATES			
LINKERKANT/LEFT HAND SIDE				REGTERKANT/RIGHT HAND SIDE			
				WG 23°	X		
L285	-26 390.13	3 421	179.10	R280	-24 306.69	3 422	177.47
L286	-26 448.01	3 421	147.86	R281	-24 408.10	3 422	064.65
L287	-26 497.45	3 421	116.03	R282	-24 519.52	3 421	957.99
L288	-26 521.23	3 421	099.35	R283	-24 637.27	3 421	860.22
L289	-26 593.30	3 421	045.58	R284	-24 745.22	3 421	803.60
L290	-26 643.72	3 421	003.06	R285	-24 811.88	3 421	743.42
L291	-26 724.27	3 420	927.42	R286	-24 894.38	3 421	695.64
L292	-26 806.50	3 420	838.03	R287	-25 113.92	3 421	594.10
L293	-26 866.14	3 420	764.38	R288	-25 171.75	3 421	569.67
L294	-26 893.26	3 420	726.60	R289	-25 316.34	3 421	521.60
L295	-26 941.62	3 420	652.94	R290	-25 611.85	3 421	450.18
L296	-26 971.91	3 420	601.70	R291	-25 931.25	3 421	394.89
L297	-27 007.09	3 420	534.35	R292	-26 048.80	3 421	374.48
L298	-27 037.47	3 420	470.23	R293	-26 258.84	3 421	306.25
L299	-27 154.58	3 420	197.70	R294	-26 415.51	3 421	229.76
L300	-27 304.36	3 419	838.23	R295	-26 523.68	3 421	165.20
L301	-27 522.74	3 419	321.43	R296	-26 626.19	3 421	091.42
L302	-27 796.31	3 418	673.53	R297	-26 722.10	3 421	009.77
L303	-27 931.55	3 418	353.71	R298	-26 810.85	3 420	920.21
L304	-28 068.10	3 418	030.69	R299	-26 891.58	3 420	823.32
L305	-28 199.43	3 417	719.45	R300	-26 964.05	3 420	719.97
L306	-28 352.22	3 417	358.85	R301	-27 026.88	3 420	610.89
L307	-28 465.94	3 417	090.71	R302	-27 080.35	3 420	496.48
L308	-28 565.22	3 416	856.68	R303	-27 214.15	3 420	180.19
L309	-28 606.55	3 416	759.17	R304	-27 338.11	3 419	886.95
L310	-28 718.88	3 416	494.12	R305	-27 440.08	3 419	645.74
L311	-28 825.81	3 416	241.97	R306	-27 539.51	3 419	410.78
L312	-28 917.75	3 416	027.73	R307	-27 806.01	3 418	780.47
L313	-28 977.40	3 415	902.22	R308	-27 938.48	3 418	466.72
L314	-29 055.72	3 415	762.87	R309	-28 070.92	3 418	153.58
L315	-29 151.86	3 415	617.52	R310	-28 195.68	3 417	858.87
L316	-29 204.26	3 415	546.89	R311	-28 237.59	3 417	767.17
L317	-29 277.46	3 415	456.33	R312	-28 251.75	3 417	726.24
L318	-29 520.46	3 415	156.38	R313	-28 327.59	3 417	546.85
L319	-29 669.69	3 414	971.56	R314	-28 394.40	3 417	388.83
L320	-29 796.00	3 414	815.40	R315	-28 499.40	3 417	140.51
L321	-29 920.12	3 414	660.15	R316	-28 611.70	3 416	874.99
L322	-29 963.30	3 414	598.40	R317	-28 655.10	3 416	772.39
L323	-29 976.53	3 414	579.50	R318	-28 717.57	3 416	624.66
L324	-30 001.58	3 414	539.90	R319	-28 826.71	3 416	366.74
L325	-30 062.23	3 414	438.61	R320	-28 937.51	3 416	104.56
L326	-30 094.87	3 414	376.58	R321	-28 995.40	3 415	977.92
L327	-30 143.63	3 414	277.80	R322	-29 060.24	3 415	854.94
L328	-30 324.10	3 413	916.29	R323	-29 131.53	3 415	735.57
L329	-30 507.16	3 413	550.27	R324	-29 209.79	3 415	620.61
L330	-30 694.41	3 413	175.70	R325	-29 288.18	3 415	518.18
L331	-30 857.28	3 412	849.81	R326	-29 442.19	3 415	327.13
L332	-31 024.55	3 412	515.25	R327	-29 706.58	3 415	000.00
L333	-31 183.77	3 412	196.89	R328	-29 859.38	3 414	811.23
L334	-31 304.71	3 411	954.72	R329	-29 923.66	3 414	732.19
L335	-31 375.38	3 411	813.37	R330	-29 995.00	3 414	639.04

Vel	24	Van	27	P727/08
Sheet		of		

PADRESERWE KOÖRDINATE				ROAD RESERVE CO-ORDINATES			
LINKERKANT/LEFT HAND SIDE				REGTERKANT/RIGHT HAND SIDE			
WG 23°				X			
L336	-31	402.73	3 411 761.73	R331	-29	998.42	3 414 634.58
L337	-31	430.97	3 411 710.81	R332	-30	073.08	3 414 518.26
L338	-31	485.83	3 411 614.62	R333	-30	137.42	3 414 395.99
L339	-32	060.27	3 410 646.61	R334	-30	235.34	3 414 200.40
L340	-32	243.16	3 410 338.97	R335	-30	341.69	3 413 987.25
L341	-32	359.44	3 410 143.37	R336	-30	459.94	3 413 751.38
L342	-32	652.04	3 409 650.76	R337	-30	565.89	3 413 538.67
L343	-32	957.25	3 409 136.73	R338	-30	731.84	3 413 207.41
L344	-33	248.65	3 408 646.14	R339	-30	858.15	3 412 954.45
L345	-33	478.45	3 408 261.28	R339X	-31	022.03	3 412 626.49
L346	-33	614.75	3 408 033.07	R340	-31	183.06	3 412 304.35
L347	-33	657.94	3 407 960.76	R341	-31	345.81	3 411 978.99
L348	-33	965.47	3 407 445.78	R342	-31	464.22	3 411 752.37
L349	-34	281.98	3 406 915.88	R343	-31	588.69	3 411 534.41
L350	-34	453.29	3 406 629.29	R344	-31	712.65	3 411 325.70
L351	-34	514.29	3 406 532.69	R345	-32	080.89	3 410 706.70
L352	-34	586.33	3 406 420.42	R346	-32	226.74	3 410 461.17
L353	-34	642.43	3 406 335.42	R347	-32	269.99	3 410 388.46
L354	-34	699.51	3 406 252.33	R348	-32	317.27	3 410 309.27
L355	-34	750.31	3 406 180.38	R349	-32	615.25	3 409 808.10
L356	-34	801.36	3 406 109.76	R350	-32	799.30	3 409 498.73
L357	-34	835.52	3 406 063.63	R351	-33	085.60	3 409 017.33
L358	-34	870.82	3 406 017.07	R352	-33	247.36	3 408 745.26
L359	-34	960.15	3 405 902.78	R353	-33	359.82	3 408 695.14
L360	-35	014.89	3 405 833.51	R354	-33	349.17	3 408 573.94
L361	-35	077.61	3 405 757.65	R355	-33	484.36	3 408 347.01
L362	-35	124.97	3 405 700.63	R356	-33	655.82	3 408 058.63
L363	-35	181.24	3 405 633.42	R357	-33	770.61	3 407 865.58
L364	-35	255.11	3 405 548.35	R358	-33	913.54	3 407 625.18
L365	-35	294.93	3 405 483.12	R359	-34	056.79	3 407 384.51
L366	-35	313.48	3 405 461.56	R360	-34	199.87	3 407 143.76
L367	-35	349.00	3 405 432.56	R361	-34	302.05	3 406 971.93
L368	-35	406.44	3 405 354.62	R362	-34	407.84	3 406 794.31
L369	-35	442.08	3 405 342.93	R363	-34	544.40	3 406 576.88
L370	-35	546.24	3 405 238.40	R364	-34	704.04	3 406 338.36
L371	-35	579.34	3 405 205.43	R365	-34	863.89	3 406 118.50
L372	-35	666.53	3 405 122.43	R366	-34	966.64	3 405 985.90
L373	-35	936.89	3 404 866.26	R367	-35	030.40	3 405 903.64
L374	-36	223.75	3 404 594.01	R368	-35	115.86	3 405 800.69
L375	-36	941.20	3 403 913.38	R369	-35	204.07	3 405 694.64
L376	-37	212.42	3 403 655.91	R370	-35	385.58	3 405 492.33
L377	-37	466.04	3 403 415.23	R371	-35	518.75	3 405 353.35
L378	-37	700.71	3 403 192.31	R372	-35	573.07	3 405 295.48
L379	-37	918.00	3 402 986.42	R373	-35	766.64	3 405 104.67
L380	-38	094.24	3 402 820.02	R374	-35	990.56	3 404 890.71
L381	-38	311.66	3 402 612.47	R375	-36	047.97	3 404 836.99
L382	-38	582.15	3 402 351.47	R376	-36	259.52	3 404 633.68
L383	-38	851.59	3 402 092.65	R377	-36	456.45	3 404 446.91
L384	-39	083.45	3 401 869.45	R378	-36	626.31	3 404 285.08
L385	-39	338.20	3 401 624.67	R379	-36	919.53	3 404 005.33
L386	-39	537.03	3 401 433.93	R380	-37	176.23	3 403 760.65

Vel	25	Van	27	P727/08
Sheet		of		

PADRESERWE KOÖRDINATE				ROAD RESERVE CO-ORDINATES			
LINKERKANT/LEFT HAND SIDE				REGTERKANT/RIGHT HAND SIDE			
				WG 23°	X		
L387	-39 768.94	3 401 211.04	R381	-37 457.25	3 403 492.49		
L388	-40 021.49	3 400 968.72	R382	-37 755.40	3 403 208.20		
L389	-40 527.83	3 400 485.18	R383	-38 033.75	3 402 942.56		
L390	-41 034.23	3 400 001.37	R384	-38 347.90	3 402 642.99		
L391	-41 275.93	3 399 763.29	R385	-38 605.78	3 402 396.96		
L392	-41 455.88	3 399 548.77	R386	-38 854.39	3 402 159.94		
L393	-41 642.03	3 399 244.02	R387	-39 075.80	3 401 948.79		
L394	-41 784.06	3 398 984.21	R388	-39 305.90	3 401 729.38		
L395	-41 927.88	3 398 721.09	R389	-39 426.69	3 401 710.78		
L396	-42 273.36	3 398 089.41	R390	-39 450.73	3 401 591.28		
L397	-42 417.18	3 397 826.31	R391	-39 564.24	3 401 482.79		
L398	-42 561.33	3 397 562.88	R392	-39 897.02	3 401 165.55		
L399	-42 736.33	3 397 242.55	R393	-40 132.58	3 400 940.83		
L400	-42 858.53	3 397 019.08	R394	-40 349.72	3 400 733.79		
L401	-43 032.25	3 396 701.20	R395	-40 899.61	3 400 209.29		
L402	-43 204.02	3 396 387.23	R396	-41 168.64	3 399 951.81		
L403	-43 386.42	3 396 053.68	R397	-41 306.88	3 399 849.90		
L404	-43 549.74	3 395 753.61	R398	-41 323.95	3 399 825.76		
L405	-43 783.44	3 395 327.46	R399	-41 351.66	3 399 763.07		
L406	-43 904.63	3 395 106.05	R400	-41 408.26	3 399 674.32		
L407	-44 014.57	3 394 894.34	R401	-41 509.29	3 399 534.10		
L408	-44 158.22	3 394 556.97	R402	-41 678.27	3 399 273.40		
L409	-44 230.80	3 394 384.50	R403	-41 834.97	3 398 989.83		
L410	-44 294.33	3 394 233.54	R404	-41 932.01	3 398 811.47		
L411	-44 429.98	3 393 910.95	R405	-42 070.35	3 398 558.84		
L412	-44 566.97	3 393 585.38	R406	-43 604.60	3 395 753.61		
L413	-44 830.89	3 392 957.73	R407	-43 803.53	3 395 387.91		
L414	-44 896.73	3 392 801.67	R408	-43 940.88	3 395 125.88		
L415	-45 029.55	3 392 487.09	R409	-44 027.45	3 394 941.80		
L416	-45 164.57	3 392 167.10	R410	-44 149.84	3 394 692.22		
L417	-45 304.11	3 391 835.20	R411	-44 243.76	3 394 476.62		
L418	-45 448.29	3 391 492.62	R412	-44 289.76	3 394 367.63		
L419	-45 577.94	3 391 185.34	R413	-44 330.89	3 394 269.74		
L420	-45 708.27	3 390 876.31	R414	-44 432.02	3 394 029.05		
L421	-45 827.34	3 390 594.14	R415	-44 563.99	3 393 715.33		
L422	-45 897.72	3 390 426.26	R416	-44 691.20	3 393 413.52		
L423	-46 017.84	3 390 139.50	R417	-44 827.75	3 393 088.89		
L424	-46 290.38	3 389 492.43	R418	-45 075.99	3 392 499.06		
L425	-46 383.43	3 389 271.36	R419	-45 293.19	3 391 982.75		
L426	-46 457.23	3 389 095.55	R420	-45 487.36	3 391 521.52		
L427	-46 606.55	3 388 740.87	R421	-45 626.95	3 391 189.99		
L428	-46 712.04	3 388 490.41	R422	-45 890.56	3 390 563.66		
L429	-47 066.07	3 387 648.63	R423	-46 061.75	3 390 157.18		
L430	-47 187.32	3 387 359.89	R424	-46 164.90	3 390 091.94		
L431	-47 343.50	3 386 988.59	R425	-46 139.29	3 389 972.78		
L432	-47 545.47	3 386 507.91	R426	-46 214.32	3 389 794.10		
L433	-47 681.36	3 386 183.99	R427	-46 449.17	3 389 236.12		
L434	-47 763.04	3 385 990.71	R428	-46 619.06	3 388 832.63		
L435	-47 785.02	3 385 946.12	R429	-46 686.72	3 388 670.69		
L436	-47 808.97	3 385 903.17	R430	-46 739.42	3 388 546.32		
L437	-47 845.56	3 385 847.96	R431	-47 163.00	3 387 540.15		

Vel	26	Van	27	P727/08
Sheet		of		

PADRESERWE KOÖRDINATE				/	ROAD RESERVE CO-ORDINATES			
LINKERKANT/LEFT HAND SIDE					REGTERKANT/RIGHT HAND SIDE			
	Y	X	WG	23°		X		
L438	-47 898.60	3 385 780.95			R432	-47 429.42	3 386 906.87	
L439	-47 908.00	3 385 770.73			R433	-47 609.76	3 386 478.64	
L440	-47 962.28	3 385 711.46			R434	-47 713.69	3 386 231.28	
L441	-47 988.97	3 385 687.95			R435	-47 805.02	3 386 014.20	
L442	-47 997.92	3 385 698.61			R436	-47 842.37	3 385 936.32	
L443	-48 019.74	3 385 679.18			R437	-47 887.15	3 385 862.45	
L444	-48 041.81	3 385 660.32			R438	-47 910.66	3 385 825.62	
L445	-48 068.96	3 385 638.46			R439	-47 936.93	3 385 792.13	
L446	-48 119.25	3 385 601.57			R440	-47 980.49	3 385 747.67	
L447	-48 509.59	3 385 341.95			R441	-48 081.49	3 385 681.99	
					R442	-48 068.75	3 385 663.76	
					R443	-48 078.86	3 385 650.44	
					R444	-48 127.58	3 385 618.17	
					R445	-48 129.89	3 385 617.14	
					R446	-48 126.86	3 385 612.75	
					R447	-48 518.95	3 385 352.07	

Vel	27	Van	27	P727/08
Sheet		of		