

# Government Gazette Staatskoerant

REPUBLIC OF SOUTH AFRICA  
REPUBLIEK VAN SUID-AFRIKA

Vol. 544

Pretoria, 15 October  
Oktober 2010

**No. 33631**

**IMPORTANT NOTICE**

The Government Printing Works will not be held responsible for faxed documents not received due to errors on the fax machine or faxes received which are unclear or incomplete. Please be advised that an "OK" slip, received from a fax machine, will not be accepted as proof that documents were received by the GPW for printing. If documents are faxed to the GPW it will be the sender's responsibility to phone and confirm that the documents were received in good order.

Furthermore the Government Printing Works will also not be held responsible for cancellations and amendments which have not been done on original documents received from clients.

**CONTENTS****INHOUD**

<i>No.</i>	<i>Page No.</i>	<i>Gazette No.</i>	<i>No.</i>	<i>Bladsy No.</i>	<i>Koerant No.</i>
<b>GOVERNMENT NOTICE</b>			<b>GOEWERMENSKENNISGEWING</b>		
<b>Transport, Department of</b>			<b>Vervoer, Departement van</b>		
<i>Government Notice</i>			<i>Goewermentskennisgewing</i>		
905			905		
South African National Roads Agency Limited and the National Roads Act (7/1998): The South African National Roads Agency Limited: Declaration amendment of National Road N14 Section 3: Amendment of Declaration No. 629 of 2005 .....	3	33631	Suid-Afrikaanse Nasionale Padagentskap Beperk en die Nasionale Paaie Wet (7/1998): Die Suid-Afrikaanse Nasionale Padagentskap Beperk: Verklaring wysiging van Nasionale Pad N14 Seksie 3: Wysiging van Verklaring No. 629 van 2005 .....	4	33631

---

## GOVERNMENT NOTICE

---

### DEPARTMENT OF TRANSPORT

No. 905

15 October 2010

## THE SOUTH AFRICAN NATIONAL ROADS AGENCY LIMITED

Registration No: 98/09584/06

---

### DECLARATION AMENDMENT OF NATIONAL ROAD N14 SECTION 3

AMENDMENT OF DECLARATION No. 629 OF 2005

By virtue of section 40(1)(b) of the South African National Roads Agency Limited and the National Roads Act, 1998 (Act No. 7 of 1998), I hereby amend Declaration No. 629 of 2005, by substituting the descriptive section of the route from Kakamas up to Keimoes, with the subjoined sheets 1 to 18 of Plan No. P764/09.

(National Road N14 Section 3: Kakamas – Keimoes )



---

MINISTER OF TRANSPORT

---

## GOEWERMENSKENNISGEWING

---

### DEPARTEMENT VAN VERVOER

No. 905

15 Oktober 2010

## DIE SUID-AFRIKAANSE NASIONALE PADAGENTSKAP BEPERK

Registrasie No: 98/09584/06

---

### VERKLARING WYSIGING VAN NASIONALE PAD N14 SEKSIE 3

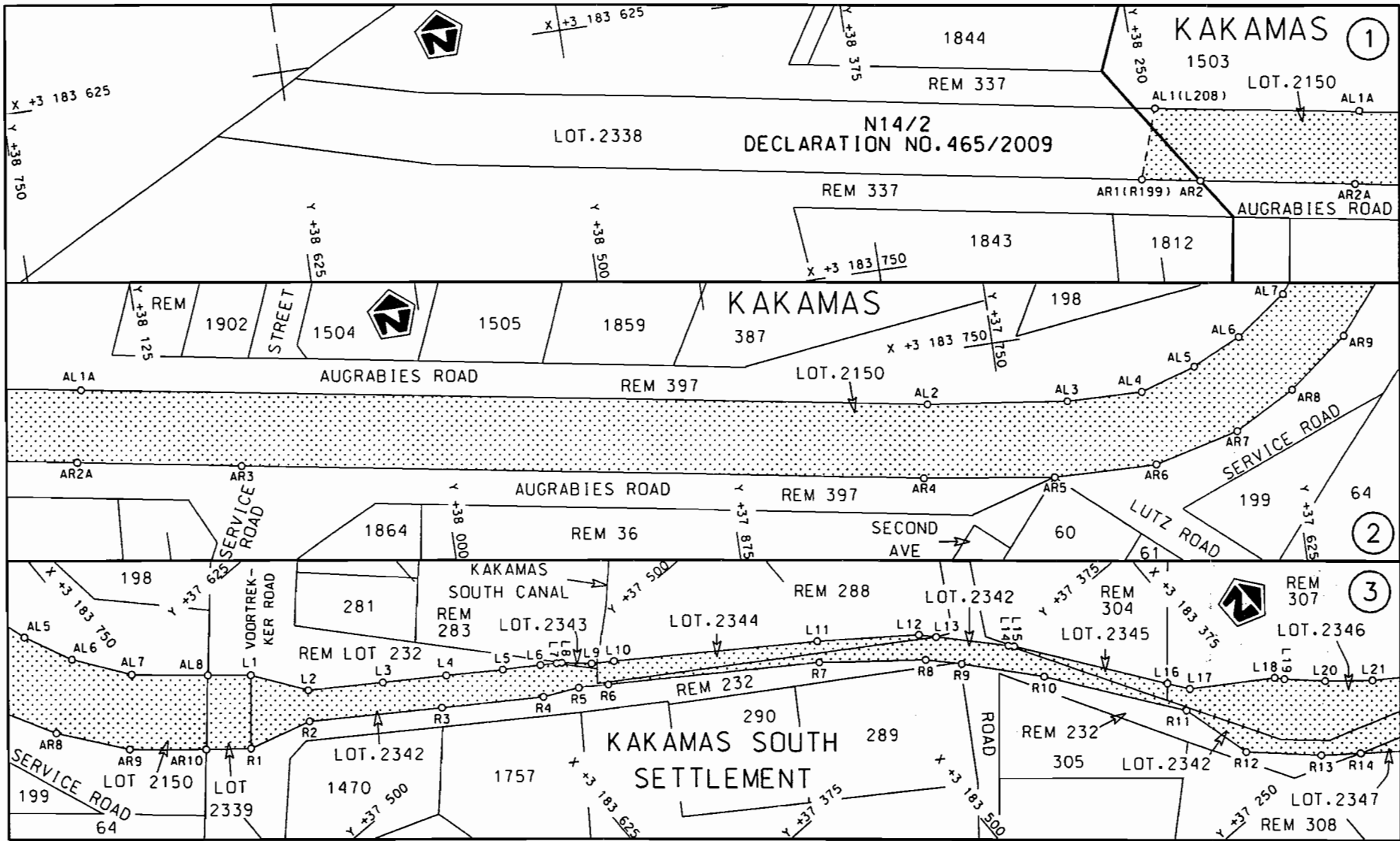
WYSIGING VAN VERKLARING NO. 629 VAN 2005

Kragtens Artikel 40(1)(b) van die Suid Afrikaanse Nasionale Padagentskap Beperk en die Nasionale Paaie Wet, 1998 (Wet no. 7 van 1998), wysig ek hiermee Verklaring no. 629 van 2005, deur die beskrywende gedeelte van die roete vanaf Kakamas tot by Keimoes, te vervang met meegaande velle 1 tot 18 van Plan no. P764/09

(Nasionale Pad N14 Seksie 3: Kakamas – Keimoes)




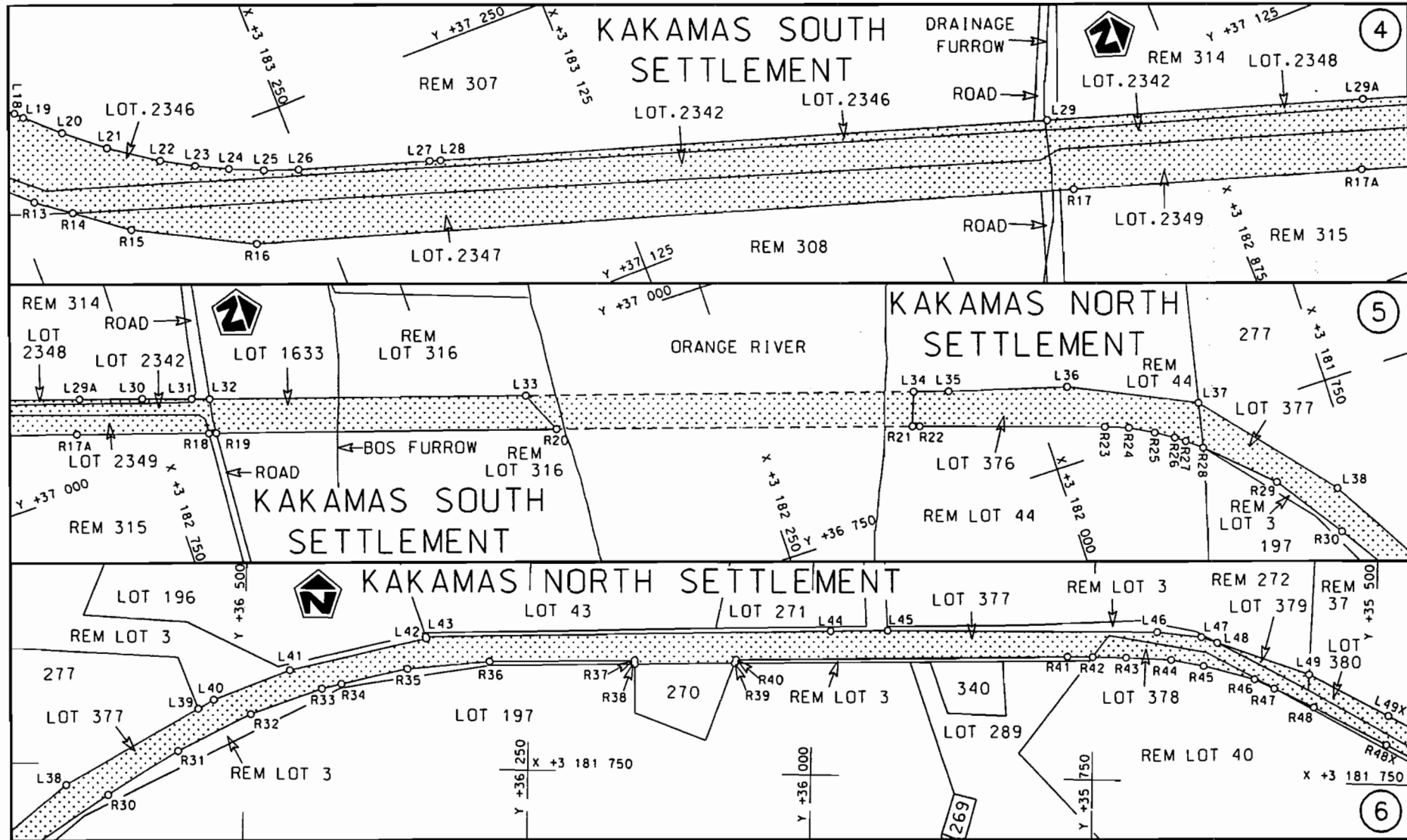
MINISTER VAN VERVOER



STAATSKOERANT, 15 OKTOBER 2010

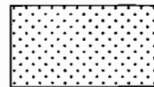
No. 33631 5

Die Suid Afrikaanse Nasionale Podagentskap Beperk	Die figuur getoon		steldie padreserwe voor van 'n gedeelte	Vel Sheet 1 van of 18
The South African National Roads Agency Limited	The figure shown		represents the road reserve of a portion van Nasionale Roete N14 Seksie Section 3	Plan P764/09



Die Suid Afrikaanse Nasionale Padogentskap Beperk  
The South African National Roads Agency Limited

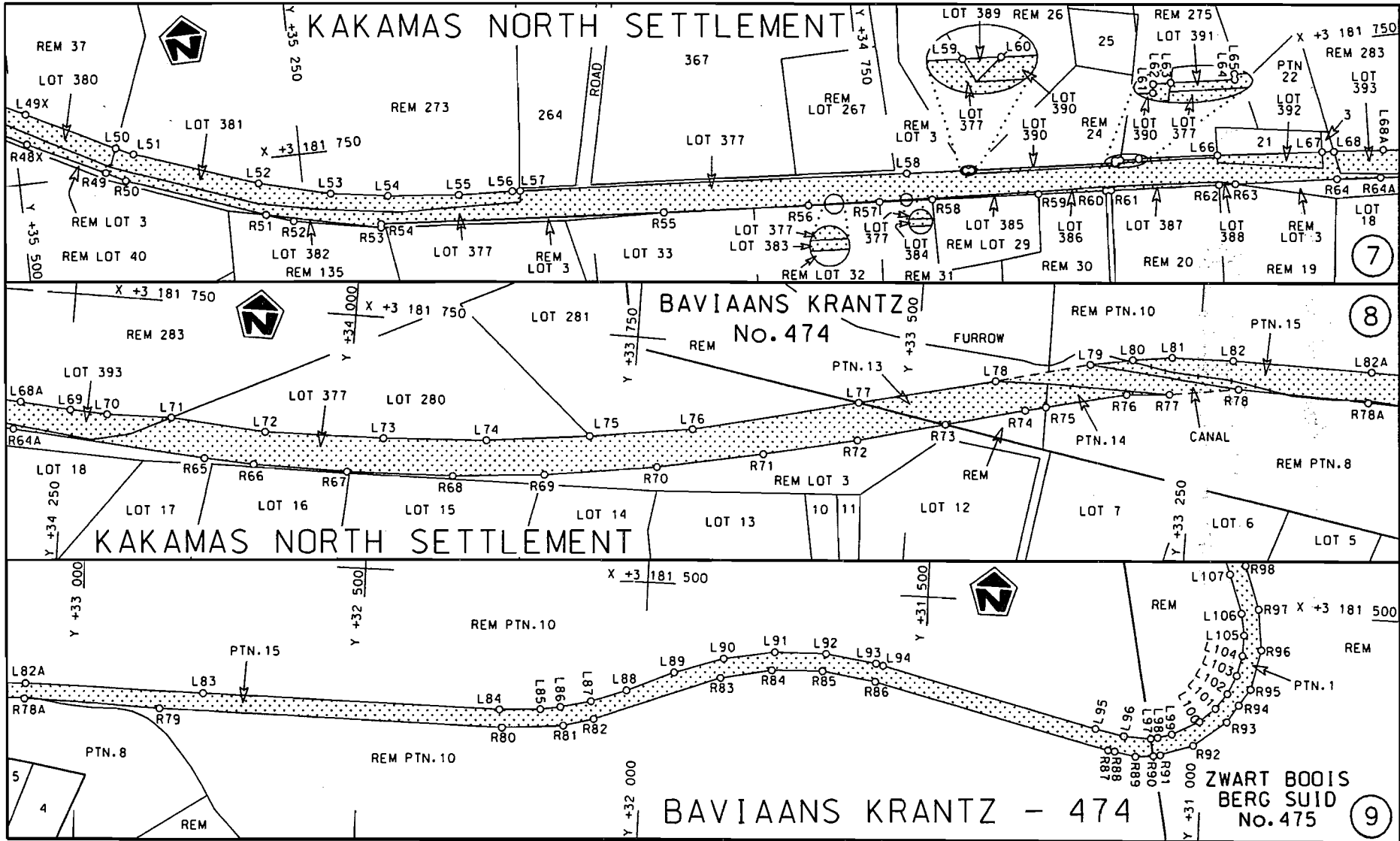
Die figuur getoon  
The figure shown

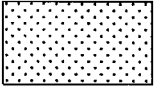


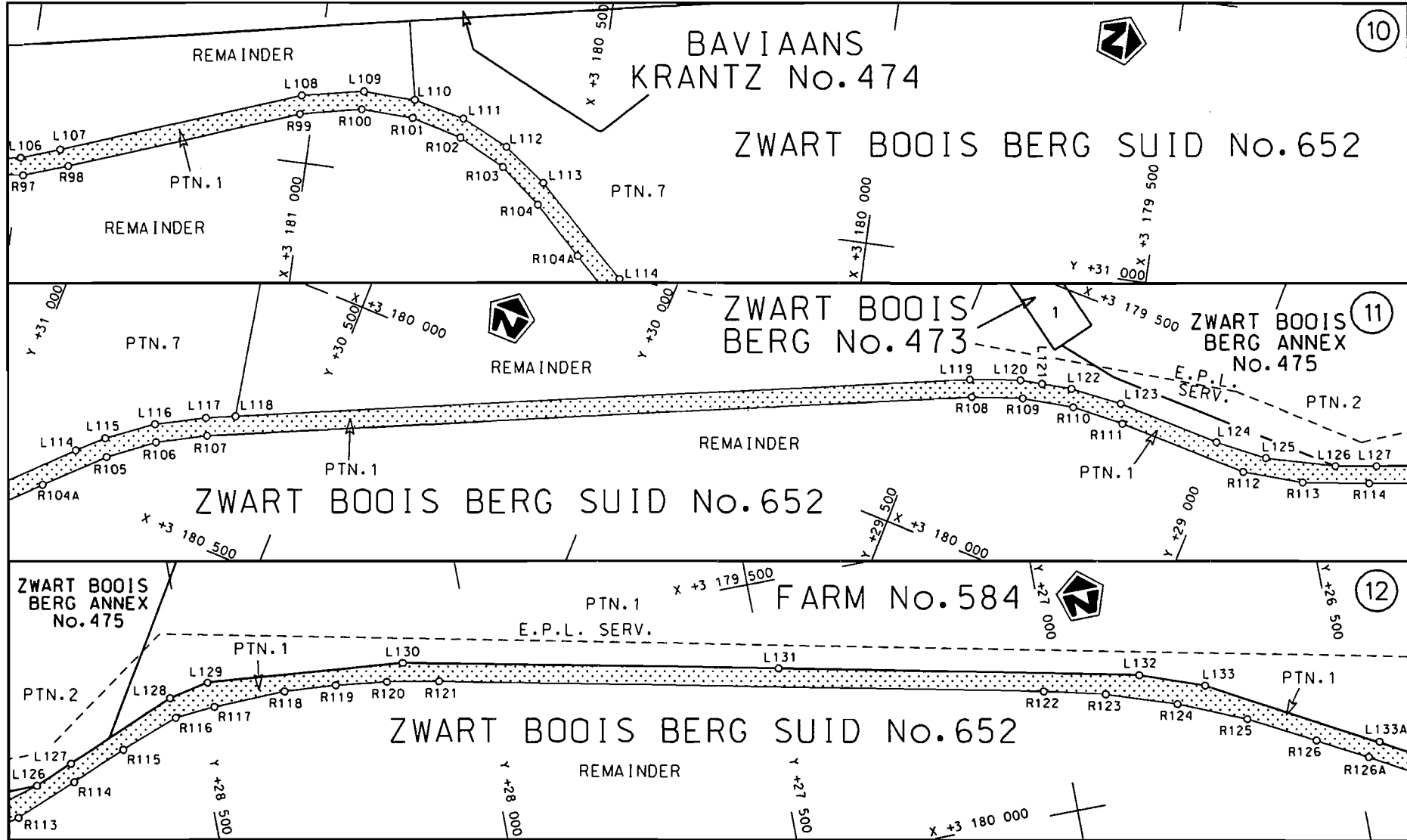
stel die padreserwe voor van 'n gedeelte  
represents the road reserve of a portion  
van Nasionale Roete N14 Seksie 3  
of National Route

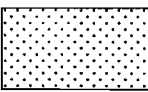
Vel Sheet 2 van of 18

Plan P764/09

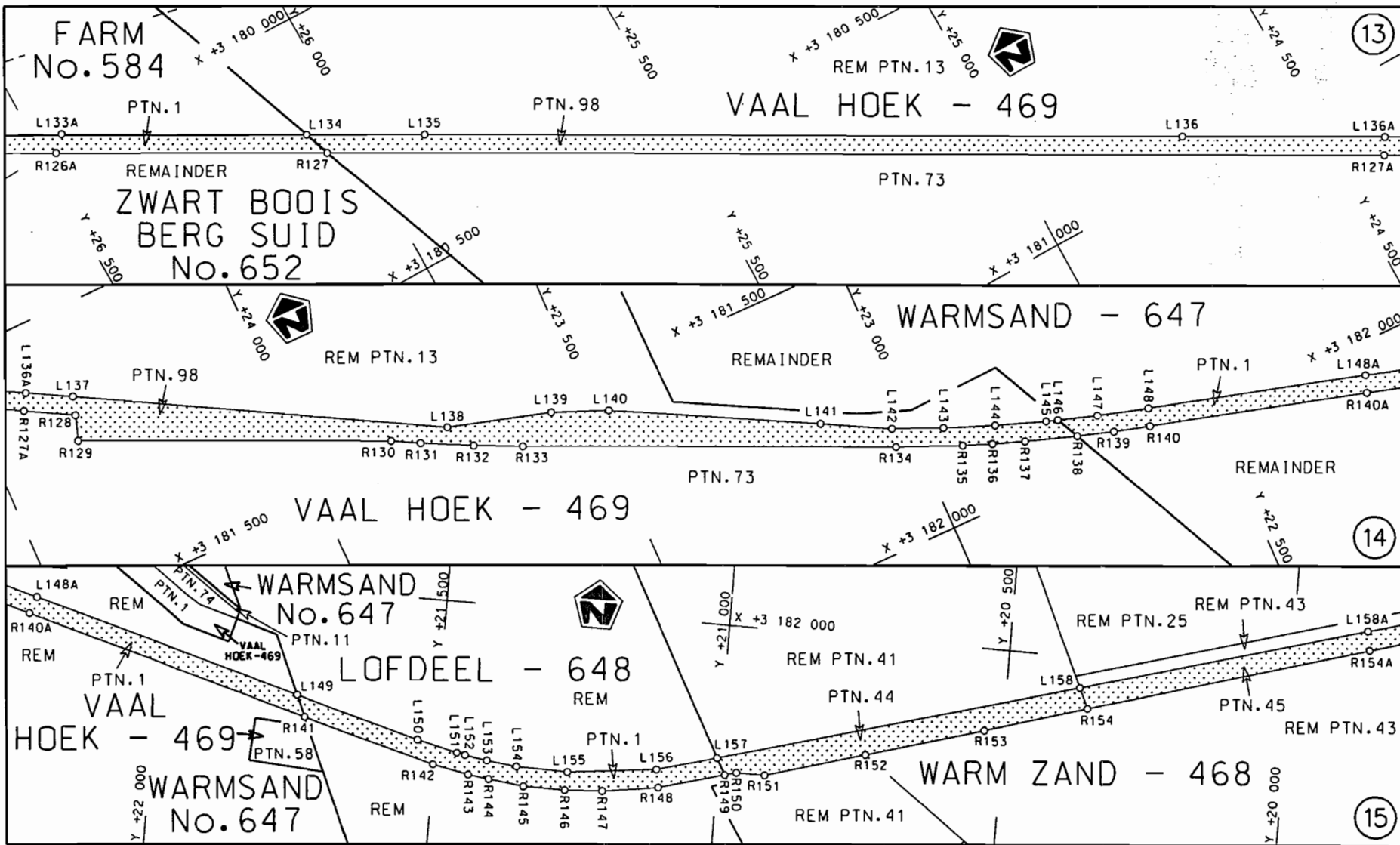


<p>Die Suid Afrikaanse Nasionale Padagentskap Beperk The South African National Roads Agency Limited</p>	<p>Die figuur getoon The figure shown</p> 	<p>steldie padreserwe voor van 'n gedeelte represents the road reserve of a portion van Nasionale Roete of National Route</p> <p>N14      Seksie Section</p> <p>3</p>	<p>Vel Sheet</p> <p>3 van of 18</p> <p>Plan P764/09</p>
--	--	---	---

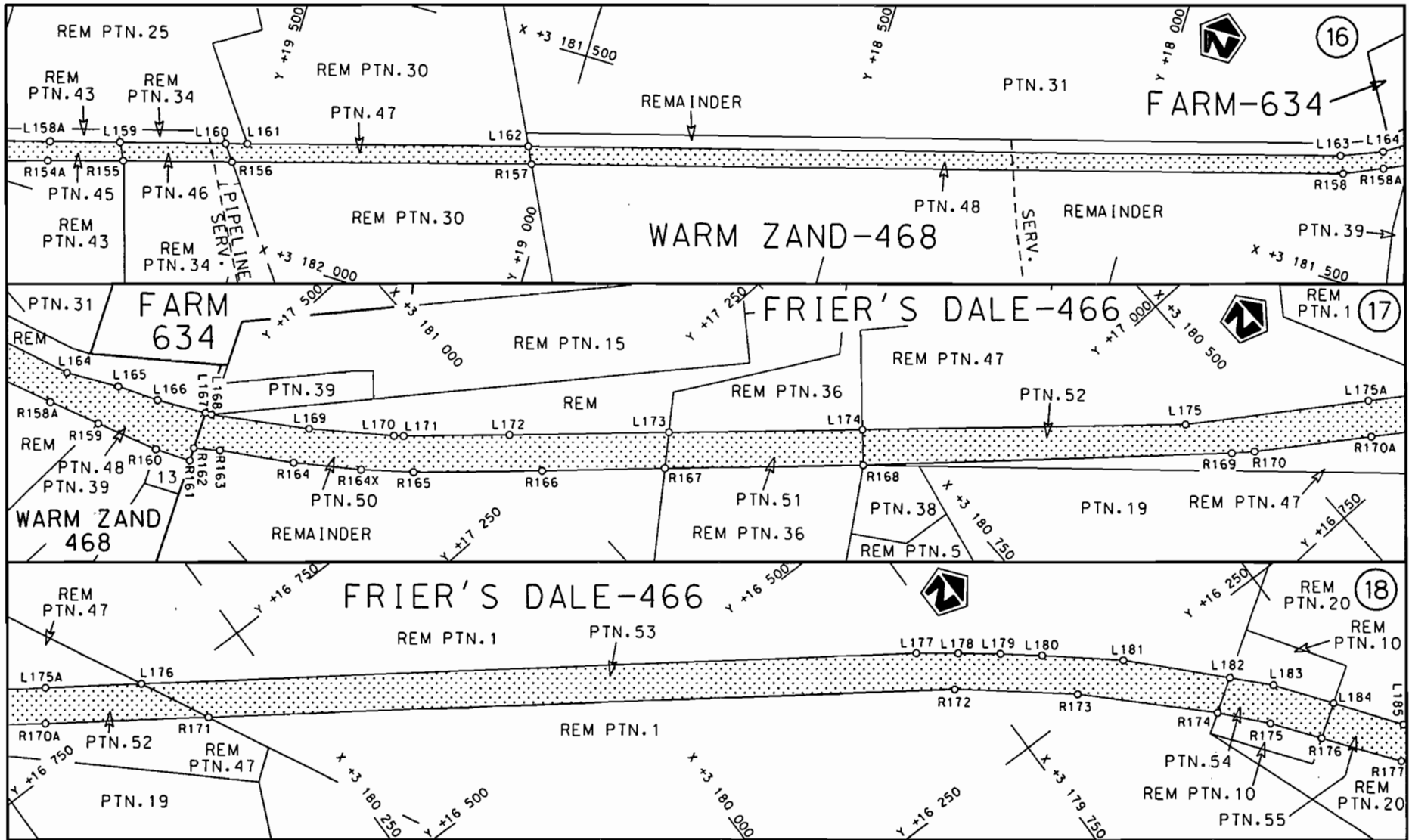



<p>Die Suid Afrikaanse Nasionale Padogenskap Beperk The South African National Roads Agency Limited</p>	<p>Die figuur getoon The figure shown</p>		<p>steldie padreserwe voor van 'n gedeelte represents the road reserve of a portion von Nasionale Roete N14 of National Route      N14      Seksie Section      3</p>	<p>Vel Sheet 4 van of 18 Plan P764/09</p>
---	---	--	---	---

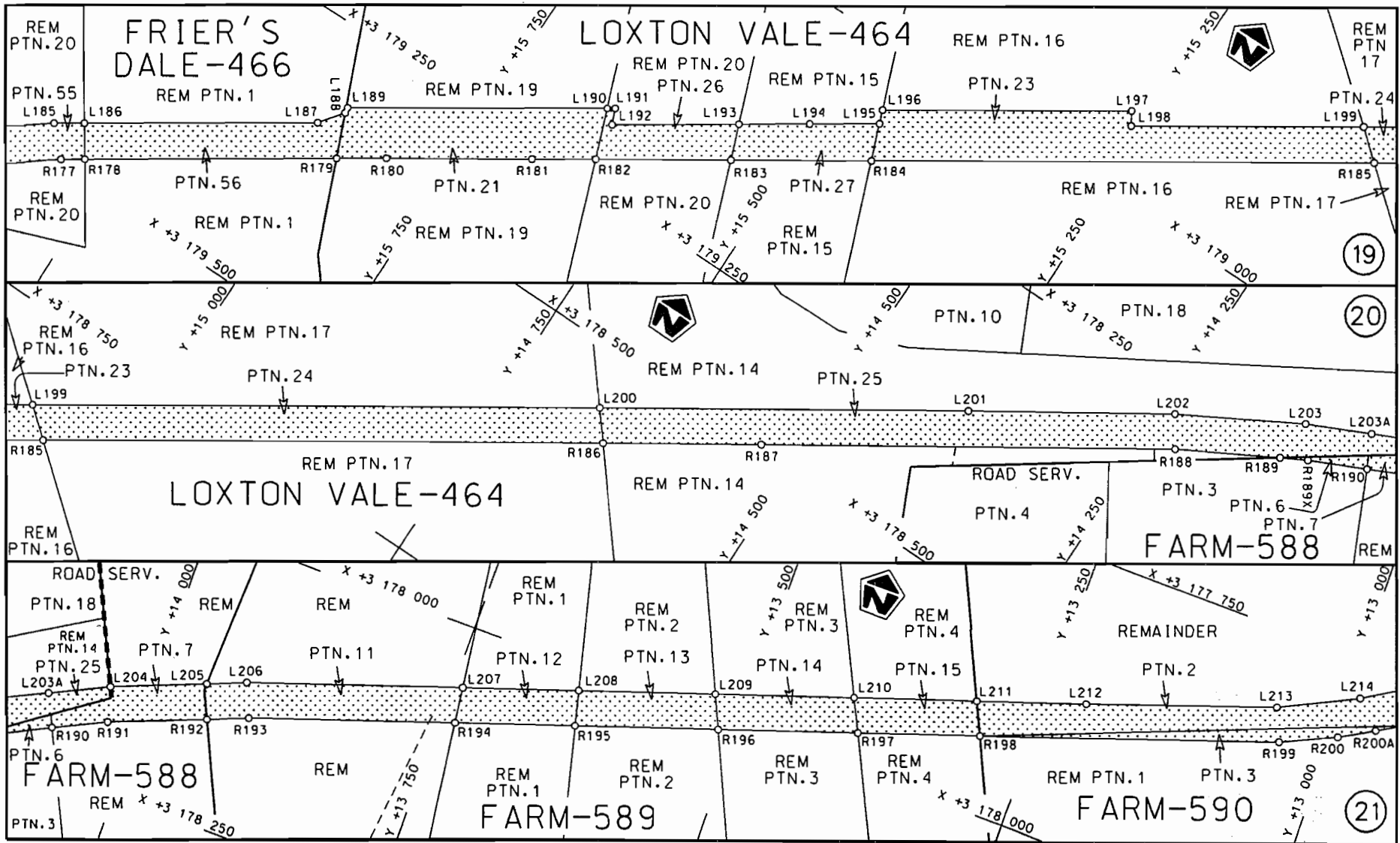




Die Suid Afrikaanse Nasionale Padagentskap Beperk The South African National Roads Agency Limited	Die figuur getoon The figure shown		steldie padreserwe voor van 'n gedeelte represents the road reserve of a portion van Nasionale Roete N14 Seksie Section of National Route 3	Vel Sheet 5 van of 18 Plan P764/09
--	---------------------------------------	--	--	---------------------------------------

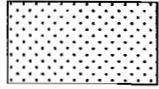


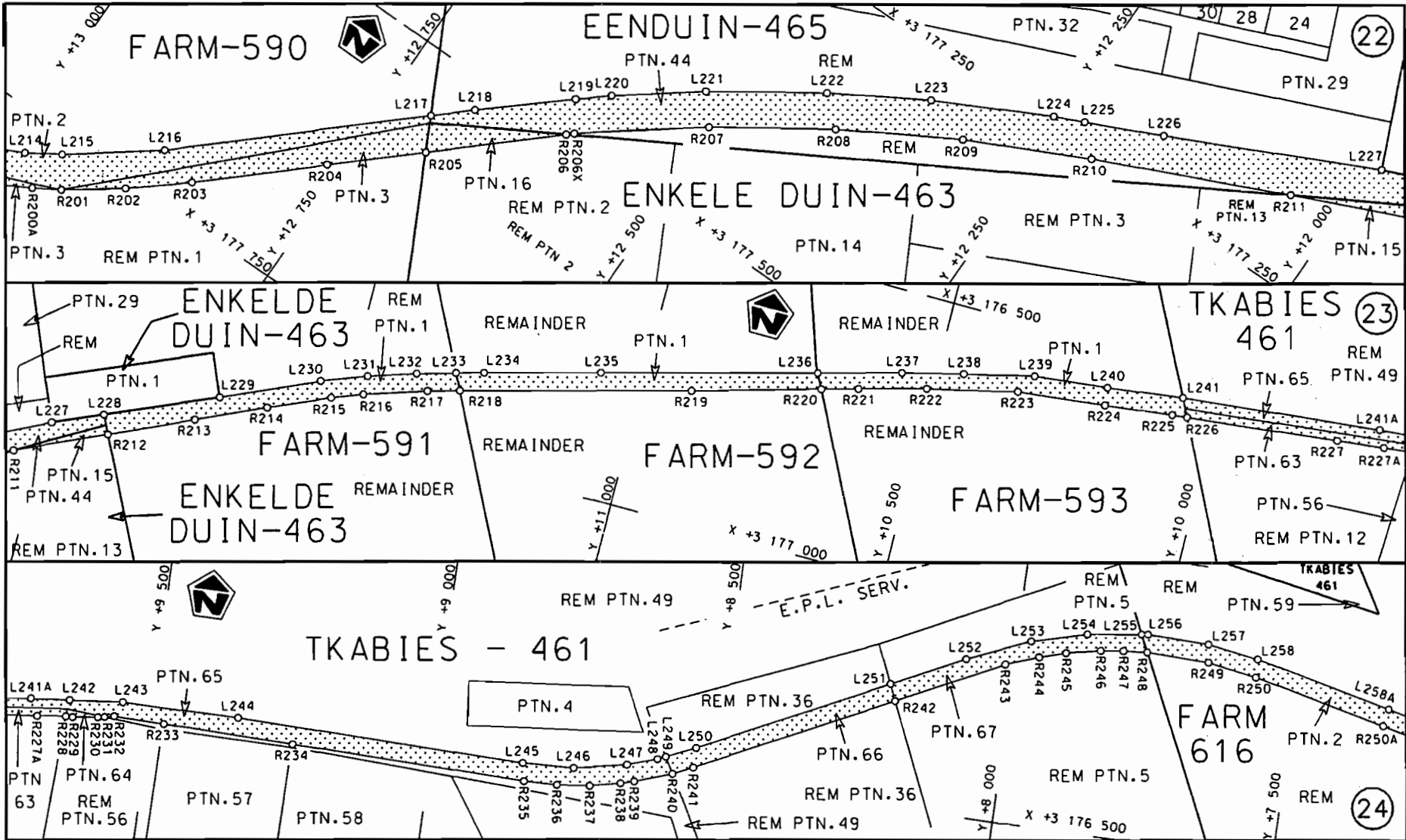
<p>Die Suid Afrikaanse Nasionale Padagentskap Beperk The South African National Roads Agency Limited</p>	<p>Die figuur getoon The figure shown</p>		<p>steldie padreserwe voor van 'n gedeelte represents the road reserve of a portion van Nasionale Roete N14 Seksie Section 3 of National Route</p>	<p>Vel Sheet 6 van of 18 Plan P764/09</p>
--	---	--	--	---




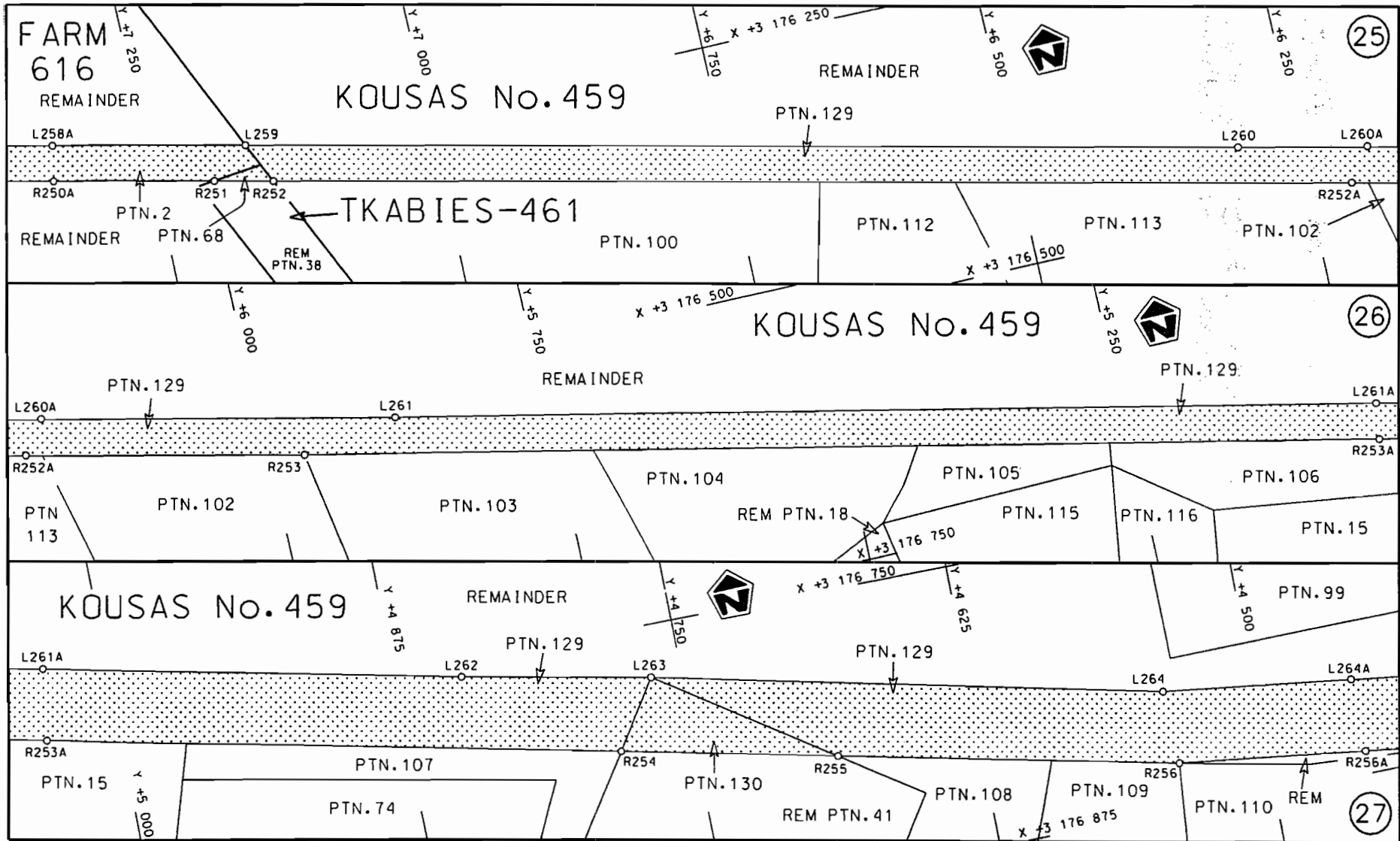
STAATSKOERANT, 15 OKTOBER 2010

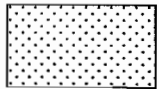
No. 33631 11

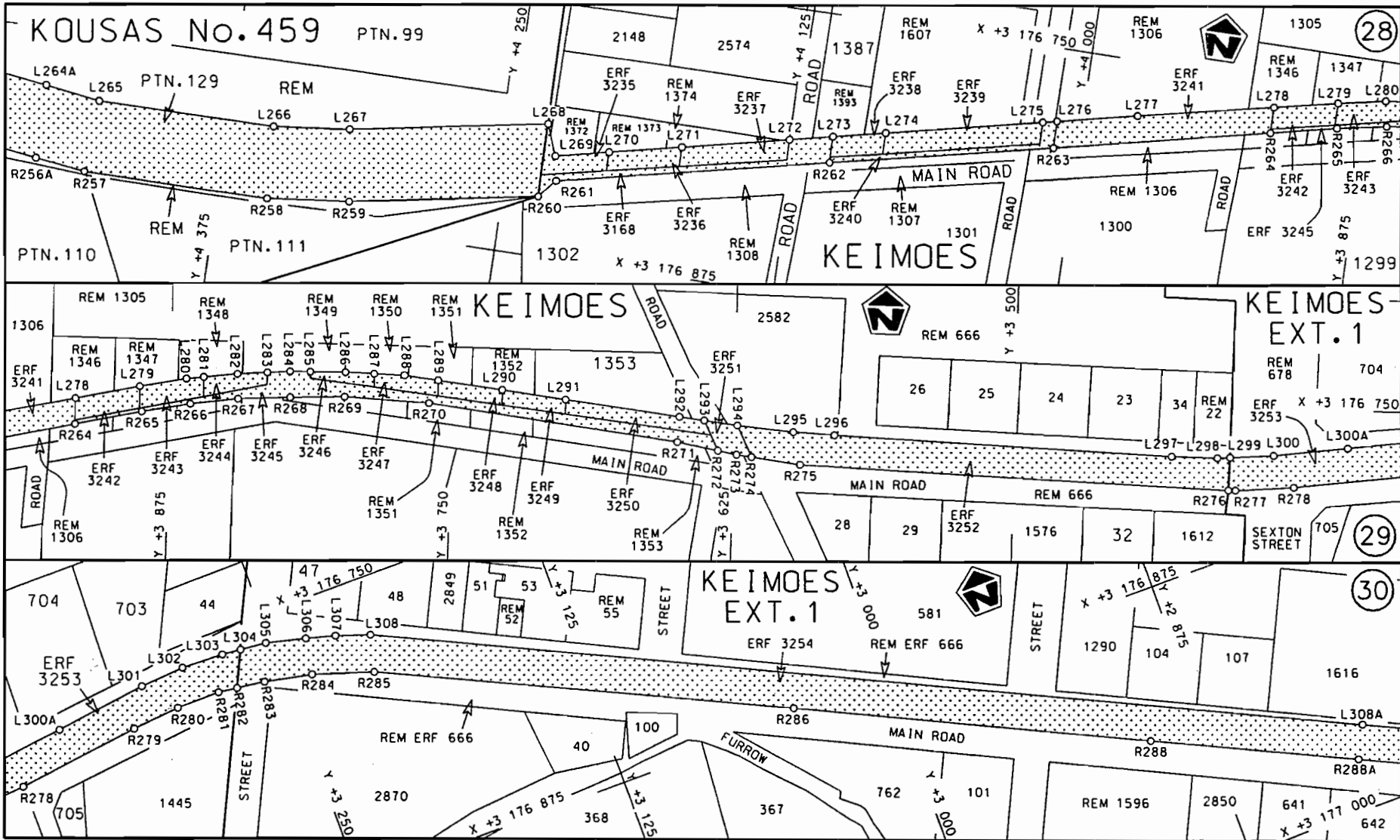
<p>Die Suid Afrikaanse Nasionale Padagentskop Beperk The South African National Roads Agency Limited</p>	<p>Die figuur getoon The figure shown</p> 	<p>steldie padreserwe voor van 'n gedeelte represents the road reserve of a portion van Nasionale Roete of National Route N14</p> <p>Seksie Section 3</p>	<p>Vel Sheet 7 van of 18 Plan P764/09</p>
--	--	---	---

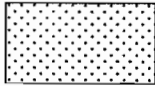


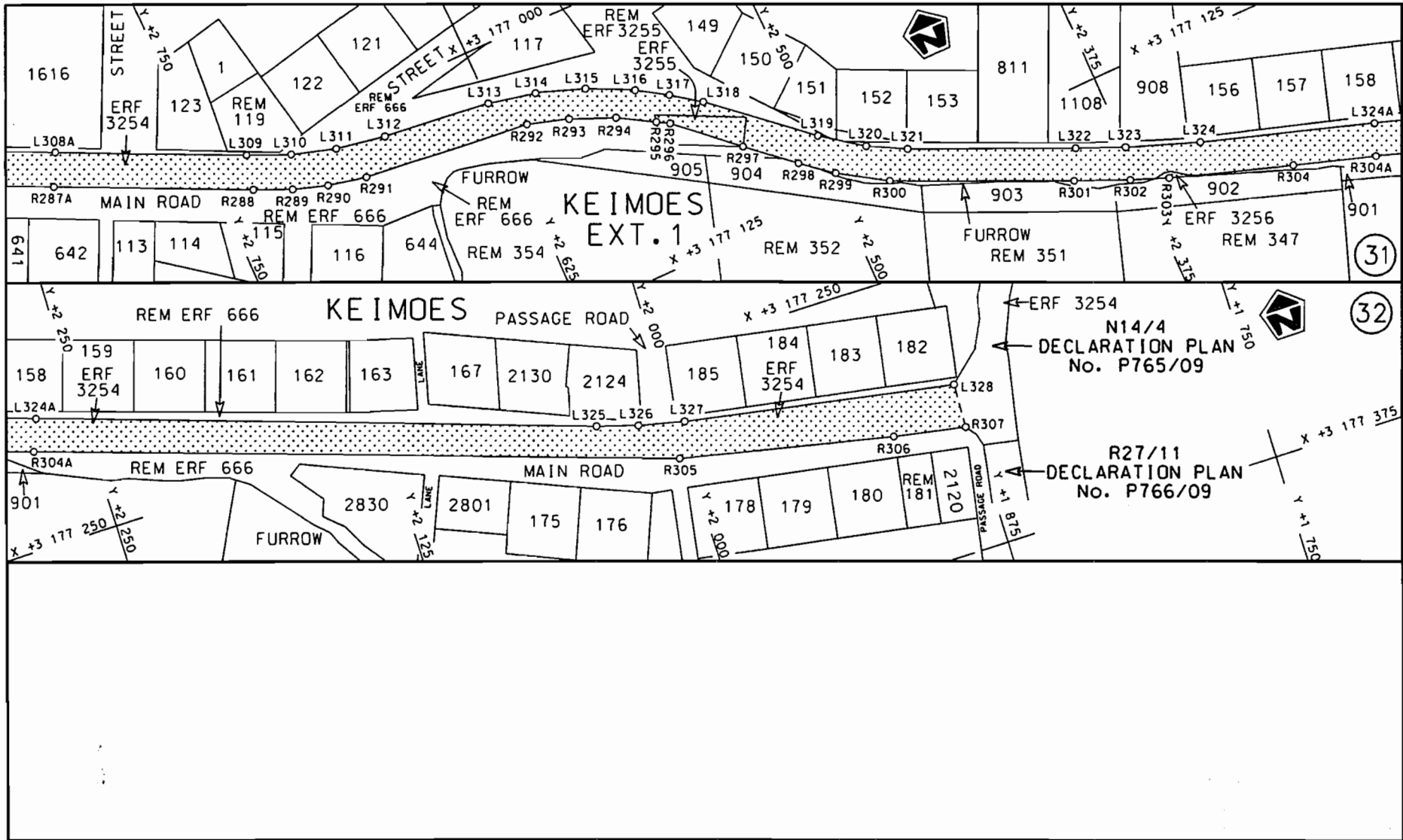
<p>Die Suid Afrikaanse Nasionale Padagentskap Beperk The South African National Roads Agency Limited</p>	<p>Die figuur getoon The figure shown</p>	 <p>steldie podereserve voor van 'n gedeelte represents the road reserve of a portion van Nasionale Roete N14 Seksie Section of National Route 3</p>	<p>Vel Sheet 8 van of 18</p>
			<p>Plan P764/09</p>

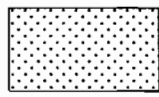


Die Suid Afrikaanse Nasionale Padagentskap Beperk The South African National Roads Agency Limited	Die figuur getoon The figure shown		stel die padreserwe voor van 'n gedeelte represents the road reserve of a portion van Nasionale Roete N14 of National Route N14 Seksie 3 Section	Vel Sheet 9 van of 18 Plan P764/09
--	---------------------------------------	--	---	---------------------------------------



<p>Die Suid Afrikaanse Nasionale Padagentskap Beperk The South African National Roads Agency Limited</p>	<p>Die figuur getoon The figure shown</p>	 <p>stel die padreserwe voor van 'n gedeelte represents the road reserve of a portion von Nasionale Roete N14 Seksie of National Route Section 3</p>	<p>Vel van Sheet 10 of 18</p>
			<p>Plan P764/09</p>



<p>Die Suid Afrikaanse Nasionale Padagentskap Beperk The South African National Roads Agency Limited</p>	<p>Die figuur getoon The figure shown</p> 	<p>steldie padreserwe voor van 'n gedeelte represents the road reserve of a portion van Nasionale Roete N14 Seksie 3 of National Route N14 Section</p>	<p>Vel Sheet 11 van of 18 Plan P764/09</p>
--	--	--	--

PADRESERWE KOÖRDINATE / ROAD RESERVE CO-ORDINATES						
LINKERKANT/LEFT HAND SIDE				REGTERKANT/RIGHT HAND SIDE		
	Y	X	WG 21°		Y	X
AL1	38 243.000	3 183	696.900	AR1	38 253.370	3 183 727.150
AL2	37 782.320	3 183	772.450	AR2	38 227.710	3 183 731.460
AL3	37 720.380	3 183	780.040	AR3	38 087.740	3 183 755.060
AL4	37 686.910	3 183	780.660	AR4	37 788.650	3 183 804.360
AL5	37 662.150	3 183	773.080	AR5	37 731.010	3 183 812.290
AL6	37 640.850	3 183	763.040	AR6	37 685.170	3 183 813.250
AL7	37 618.610	3 183	747.050	AR7	37 647.550	3 183 804.020
AL8	37 596.750	3 183	721.540	AR8	37 620.760	3 183 789.430
L1	37 584.290	3 183	707.010	AR9	37 594.150	3 183 769.310
L2	37 562.520	3 183	691.490	AR10	37 572.500	3 183 743.210
L3	37 543.880	3 183	664.140	R1	37 559.740	3 183 727.840
L4	37 528.290	3 183	641.000	R2	37 551.760	3 183 699.960
L5	37 514.090	3 183	620.320	R3	37 518.800	3 183 651.630
L6	37 504.720	3 183	606.140	R4	37 493.270	3 183 614.120
L7	37 500.590	3 183	600.060	R5	37 486.070	3 183 599.420
L8	37 499.260	3 183	598.100	R6	37 478.710	3 183 588.600
L9	37 490.460	3 183	588.310	R7	37 425.520	3 183 510.590
L10	37 484.890	3 183	580.040	R8	37 395.830	3 183 473.580
L11	37 433.180	3 183	505.290	R9	37 384.260	3 183 462.540
L12	37 406.090	3 183	468.790	R10	37 356.340	3 183 437.990
L13	37 400.520	3 183	463.570	R11	37 304.060	3 183 399.070
L14	37 376.910	3 183	441.440	R12	37 273.180	3 183 390.620
L15	37 374.980	3 183	439.630	R13	37 250.340	3 183 365.820
L16	37 318.540	3 183	397.840	R14	37 239.690	3 183 351.730
L17	37 310.310	3 183	391.750	R15	37 223.400	3 183 330.180
L18	37 289.730	3 183	359.920	R16	37 197.700	3 183 280.820
L19	37 286.500	3 183	356.950	R17	37 088.270	3 182 935.600
L20	37 273.950	3 183	343.380	R18	37 014.350	3 182 702.420
L21	37 260.670	3 183	327.090	R19	37 012.360	3 182 696.150
L22	37 247.100	3 183	307.130	R20	36 921.570	3 182 410.000
L23	37 239.350	3 183	293.680	R21	36 825.810	3 182 109.150
L24	37 232.810	3 183	280.230	R22	36 824.680	3 182 105.570
L25	37 226.560	3 183	266.120	R23	36 772.460	3 181 947.730
L26	37 221.240	3 183	251.780	R24	36 765.060	3 181 927.880
L27	37 203.610	3 183	196.180	R25	36 753.760	3 181 907.160
L28	37 202.080	3 183	191.650	R26	36 743.950	3 181 891.670
L29	37 120.610	3 182	935.490	R27	36 737.890	3 181 883.330
L30	37 061.220	3 182	748.750	R28	36 727.600	3 181 870.390
L31	37 047.440	3 182	707.370	R29	36 678.460	3 181 818.490
L32	37 042.510	3 182	692.560	R30	36 619.200	3 181 777.250
L33	36 957.850	3 182	426.910	R31	36 558.220	3 181 737.440
L34	36 854.250	3 182	098.730	R32	36 494.540	3 181 703.990
L35	36 844.960	3 182	069.310	R33	36 432.210	3 181 680.560
L36	36 816.280	3 181	968.560	R34	36 414.960	3 181 676.030
L37	36 766.260	3 181	861.920	R35	36 356.170	3 181 661.990
L38	36 656.590	3 181	769.150	R36	36 284.740	3 181 654.160
L39	36 540.900	3 181	699.990	R37	36 156.500	3 181 651.260
L40	36 527.490	3 181	691.830	R38	36 156.430	3 181 654.570
L41	36 460.760	3 181	664.570	R39	36 068.320	3 181 652.130
L42	36 340.190	3 181	634.850	R40	36 067.080	3 181 648.930
L43	36 340.660	3 181	633.260	R41	35 773.500	3 181 641.400

Vel	12	Van	18	P764/09
Sheet		of		



PADRESERWE KOÖRDINATE / ROAD RESERVE CO-ORDINATES						
LINKERKANT/LEFT HAND SIDE			REGTERKANT/RIGHT HAND SIDE			
	Y	X	WG 21°		Y	X
L44	35 983.770	3 181	622.360	R42	35 751.100	3 181 641.390
L45	35 932.590	3 181	621.100	R43	35 721.470	3 181 641.380
L46	35 693.940	3 181	618.440	R44	35 681.180	3 181 642.740
L47	35 654.500	3 181	622.230	R45	35 652.170	3 181 647.670
L48	35 640.450	3 181	626.870	R46	35 607.270	3 181 658.780
L49	35 559.180	3 181	653.910	R47	35 589.870	3 181 666.690
L50	35 411.760	3 181	727.200	R48	35 554.670	3 181 682.670
L51	35 396.600	3 181	733.980	R49	35 422.790	3 181 747.880
L52	35 288.750	3 181	771.980	R50	35 405.810	3 181 756.810
L53	35 225.630	3 181	787.990	R51	35 285.130	3 181 800.350
L54	35 175.970	3 181	795.460	R52	35 261.450	3 181 808.350
L55	35 113.350	3 181	801.390	R53	35 184.800	3 181 822.650
L56	35 066.050	3 181	803.310	R54	35 184.480	3 181 819.240
L57	35 059.080	3 181	803.720	R55	34 934.570	3 181 836.350
L58	34 715.880	3 181	824.400	R56	34 806.500	3 181 843.670
L59	34 663.310	3 181	827.410	R57	34 742.970	3 181 847.300
L60	34 658.180	3 181	827.700	R58	34 695.560	3 181 850.010
L61	34 530.940	3 181	834.980	R59	34 601.250	3 181 855.390
L62	34 530.660	3 181	832.850	R60	34 541.720	3 181 858.770
L63	34 525.950	3 181	833.010	R61	34 536.790	3 181 859.050
L64	34 509.410	3 181	834.160	R62	34 439.710	3 181 864.550
L65	34 509.350	3 181	833.570	R63	34 425.150	3 181 865.380
L66	34 438.440	3 181	837.970	R64	34 335.000	3 181 870.490
L67	34 345.720	3 181	845.110	R65	34 124.650	3 181 885.960
L68	34 335.310	3 181	845.900	R66	34 080.860	3 181 888.000
L69	34 246.990	3 181	852.710	R67	33 997.550	3 181 888.020
L70	34 214.160	3 181	854.300	R68	33 903.930	3 181 884.640
L71	34 156.880	3 181	852.700	R69	33 823.160	3 181 877.250
L72	34 072.740	3 181	858.980	R70	33 723.370	3 181 862.750
L73	33 967.690	3 181	856.490	R71	33 631.170	3 181 843.820
L74	33 876.720	3 181	851.180	R72	33 548.530	3 181 825.300
L75	33 786.000	3 181	840.500	R73	33 471.040	3 181 805.210
L76	33 695.320	3 181	827.230	R74	33 401.100	3 181 787.090
L77	33 549.870	3 181	792.270	R75	33 383.040	3 181 782.830
L78	33 429.330	3 181	763.440	R76	33 312.570	3 181 766.180
L79	33 346.600	3 181	742.330	R77	33 273.740	3 181 762.990
L80	33 309.450	3 181	735.240	R78	33 212.480	3 181 753.570
L81	33 273.730	3 181	730.330	R79	32 855.780	3 181 762.120
L82	33 219.120	3 181	728.820	R80	32 247.290	3 181 767.580
L83	32 778.870	3 181	731.780	R81	32 138.970	3 181 758.860
L84	32 253.000	3 181	736.190	R82	32 086.210	3 181 744.560
L85	32 180.380	3 181	732.030	R83	31 863.680	3 181 660.720
L86	32 145.340	3 181	726.300	R84	31 773.520	3 181 642.510
L87	32 092.240	3 181	713.640	R85	31 683.280	3 181 639.600
L88	32 030.320	3 181	691.350	R86	31 588.330	3 181 653.410
L89	31 946.050	3 181	655.550	R87	31 162.250	3 181 754.210
L90	31 859.610	3 181	626.660	R88	31 156.990	3 181 754.110
L91	31 769.580	3 181	610.600	R89	31 119.500	3 181 761.540
L92	31 678.450	3 181	608.910	R90	31 087.030	3 181 758.790
L93	31 588.200	3 181	621.590	R91	31 083.110	3 181 758.460
L94	31 582.330	3 181	622.750	R92	31 015.640	3 181 737.110

Vel	13	Van	18	P764/09
Sheet		of		

PADRESERWE KOÖRDINATE / ROAD RESERVE CO-ORDINATES									
LINKERKANT/LEFT HAND SIDE					REGTERKANT/RIGHT HAND SIDE				
	Y	X	WG 21°		Y	X			
L95	31 192.500	3 181 716.060		R93	30 957.610	3 181 692.870			
L96	31 140.910	3 181 726.460		R94	30 937.650	3 181 662.570			
L97	31 093.130	3 181 728.580		R95	30 918.220	3 181 633.520			
L98	31 091.190	3 181 728.660		R96	30 901.830	3 181 563.570			
L99	31 054.990	3 181 719.110		R97	30 910.030	3 181 492.210			
L100	31 006.410	3 181 694.550		R98	30 936.830	3 181 414.790			
L101	30 978.960	3 181 670.350		R99	31 083.510	3 181 021.900			
L102	30 958.610	3 181 643.080		R100	31 106.590	3 180 915.020			
L103	30 943.480	3 181 610.410		R101	31 104.160	3 180 823.490			
L104	30 934.940	3 181 575.090		R102	31 082.610	3 180 735.230			
L105	30 933.650	3 181 538.750		R103	31 042.100	3 180 653.790			
L106	30 940.000	3 181 500.580		R104	30 985.470	3 180 583.210			
L107	30 963.320	3 181 433.040		R105	30 820.150	3 180 413.880			
L108	31 116.300	3 181 023.250		R106	30 749.320	3 180 357.060			
L109	31 137.990	3 180 915.160		R107	30 669.530	3 180 312.620			
L110	31 135.960	3 180 823.990		R108	29 442.690	3 179 740.320			
L111	31 115.670	3 180 734.750		R109	29 357.460	3 179 708.240			
L112	31 078.270	3 180 652.620		R110	29 268.300	3 179 689.110			
L113	31 024.450	3 180 578.760		R111	29 177.460	3 179 683.300			
L114	30 874.680	3 180 423.170		R112	28 946.490	3 179 681.720			
L115	30 834.790	3 180 384.170		R113	28 841.520	3 179 659.290			
L116	30 762.910	3 180 328.340		R114	28 732.460	3 179 616.630			
L117	30 683.010	3 180 284.320		R115	28 636.960	3 179 576.920			
L118	30 635.140	3 180 261.840		R116	28 535.660	3 179 539.860			
L119	29 457.500	3 179 713.140		R117	28 464.330	3 179 534.040			
L120	29 373.130	3 179 680.000		R118	28 337.970	3 179 530.690			
L121	29 335.140	3 179 671.380		R119	28 247.580	3 179 537.210			
L122	29 283.650	3 179 659.620		R120	28 156.510	3 179 548.540			
L123	29 193.230	3 179 652.050		R121	28 066.420	3 179 564.820			
L124	29 010.790	3 179 650.760		R122	27 019.070	3 179 783.170			
L125	28 918.590	3 179 643.710		R123	26 912.780	3 179 808.750			
L126	28 798.540	3 179 610.420		R124	26 791.400	3 179 849.420			
L127	28 732.240	3 179 583.720		R125	26 674.140	3 179 898.940			
L128	28 539.240	3 179 503.880		R126	26 560.790	3 179 959.140			
L129	28 468.570	3 179 489.760		R127	26 054.550	3 180 238.130			
L130	28 122.800	3 179 520.930		R128	24 336.930	3 181 184.560			
L131	27 473.560	3 179 654.690		R129	24 351.010	3 181 227.380			
L132	26 848.600	3 179 786.500		R130	23 845.530	3 181 455.580			
L133	26 737.210	3 179 826.780		R131	23 800.000	3 181 479.920			
L134	26 072.130	3 180 192.730		R132	23 716.990	3 181 521.900			
L135	25 890.570	3 180 292.630		R133	23 637.340	3 181 558.950			
L136	24 715.190	3 180 939.810		R134	23 035.580	3 181 829.240			
L137	24 327.340	3 181 153.260		R135	22 927.110	3 181 875.030			
L138	23 746.200	3 181 474.130		R136	22 877.110	3 181 894.140			
L139	23 567.200	3 181 525.460		R137	22 822.040	3 181 914.290			
L140	23 473.980	3 181 563.620		R138	22 733.410	3 181 943.990			
L141	23 141.970	3 181 737.710		R139	22 671.210	3 181 963.300			
L142	23 029.500	3 181 797.420		R140	22 609.120	3 181 980.490			
L143	22 945.630	3 181 833.470		R141	21 732.550	3 182 223.940			
L144	22 859.530	3 181 867.120		R142	21 500.990	3 182 288.180			
L145	22 773.220	3 181 897.910		R143	21 438.270	3 182 301.170			

Vel  
Sheet

14

Van

18

of

P764/09

PADRESERWE KOÖRDINATE / ROAD RESERVE CO-ORDINATES						
LINKERKANT/LEFT HAND SIDE				REGTERKANT/RIGHT HAND SIDE		
	Y	X	WG 21°		Y	X
L146	22 753.020	3 181	904.350	R144	21 401.850	3 182 305.830
L147	22 686.140	3 181	925.670	R145	21 338.630	3 182 312.870
L148	22 598.640	3 181	950.830	R146	21 265.170	3 182 313.010
L149	21 749.020	3 182	186.520	R147	21 199.710	3 182 309.110
L150	21 531.470	3 182	246.870	R148	21 101.980	3 182 294.840
L151	21 461.000	3 182	264.180	R149	20 987.450	3 182 262.530
L152	21 446.450	3 182	267.000	R150	20 966.920	3 182 256.740
L153	21 407.510	3 182	273.330	R151	20 916.540	3 182 256.890
L154	21 353.660	3 182	279.260	R152	20 740.870	3 182 204.810
L155	21 263.000	3 182	281.120	R153	20 534.280	3 182 143.270
L156	21 107.740	3 182	263.380	R154	20 353.870	3 182 089.010
L157	21 003.020	3 182	233.700	R155	19 735.040	3 181 906.710
L158	20 370.210	3 182	053.820	R156	19 550.060	3 181 853.960
L159	19 749.120	3 181	877.190	R157	19 040.860	3 181 708.870
L160	19 569.920	3 181	826.350	R158	17 655.970	3 181 315.110
L161	19 533.080	3 181	815.910	R159	17 547.720	3 181 266.840
L162	19 055.220	3 181	679.980	R160	17 496.990	3 181 244.280
L163	17 669.110	3 181	285.940	R161	17 469.680	3 181 228.620
L164	17 599.420	3 181	257.660	R162	17 475.440	3 181 218.530
L165	17 559.940	3 181	231.840	R163	17 458.490	3 181 202.650
L166	17 528.110	3 181	214.260	R164	17 406.940	3 181 161.470
L167	17 491.560	3 181	190.290	R164X	17 362.350	3 181 120.670
L168	17 486.880	3 181	187.220	R165	17 329.580	3 181 087.350
L169	17 420.070	3 181	131.310	R166	17 255.050	3 181 002.340
L170	17 364.690	3 181	078.780	R167	17 184.250	3 180 919.970
L171	17 358.800	3 181	072.550	R168	17 069.310	3 180 787.110
L172	17 297.850	3 181	003.030	R169	16 859.170	3 180 536.270
L173	17 205.290	3 180	896.260	R170	16 846.760	3 180 520.170
L174	17 092.970	3 180	766.710	R171	16 705.290	3 180 315.120
L175	16 905.100	3 180	549.590	R172	16 330.120	3 179 771.300
L176	16 764.400	3 180	344.770	R173	16 261.260	3 179 686.060
L177	16 375.990	3 179	779.330	R174	16 173.760	3 179 596.790
L178	16 353.740	3 179	749.670	R175	16 138.440	3 179 565.020
L179	16 331.120	3 179	719.920	R176	16 100.610	3 179 536.250
L180	16 307.580	3 179	691.020	R177	16 042.270	3 179 491.880
L181	16 260.930	3 179	635.440	R178	16 024.540	3 179 480.070
L182	16 192.160	3 179	569.420	R179	15 837.830	3 179 355.580
L183	16 163.840	3 179	542.510	R180	15 800.870	3 179 330.940
L184	16 118.830	3 179	509.160	R181	15 693.840	3 179 260.860
L185	16 064.900	3 179	469.200	R182	15 646.630	3 179 229.740
L186	16 042.050	3 179	454.030	R183	15 545.770	3 179 163.270
L187	15 869.080	3 179	339.250	R184	15 440.760	3 179 094.060
L188	15 853.230	3 179	318.580	R185	15 066.580	3 178 847.450
L189	15 853.920	3 179	313.520	R186	14 651.190	3 178 573.680
L190	15 662.440	3 179	187.140	R187	14 533.290	3 178 495.980
L191	15 656.390	3 179	183.140	R188	14 223.910	3 178 293.130
L192	15 650.840	3 179	196.620	R189	14 142.420	3 178 247.640
L193	15 556.930	3 179	133.490	R189X	14 127.310	3 178 239.200
L194	15 504.770	3 179	098.430	R190	14 072.480	3 178 212.480
L195	15 452.450	3 179	063.210	R191	14 027.030	3 178 190.330
L196	15 456.840	3 179	051.650	R192	13 945.200	3 178 157.890

Vel	15	Van	18	P764/09
Sheet		of		

PADRESERWE KOÖRDINATE / ROAD RESERVE CO-ORDINATES											
LINKERKANT/LEFT HAND SIDE					REGTERKANT/RIGHT HAND SIDE						
	Y		X	WG 21°				X			
L197	15	271.670	3	178	929.640	R193	13	910.590	3	178	144.180
L198	15	264.750	3	178	940.790	R194	13	737.410	3	178	084.960
L199	15	091.720	3	178	826.760	R195	13	636.850	3	178	050.570
L200	14	670.920	3	178	549.460	R196	13	516.000	3	178	009.240
L201	14	395.730	3	178	368.120	R197	13	397.910	3	177	968.580
L202	14	241.140	3	178	267.480	R198	13	294.780	3	177	932.940
L203	14	139.630	3	178	210.200	R199	13	042.990	3	177	845.080
L204	14	035.340	3	178	160.220	R200	12	995.010	3	177	822.850
L205	13	955.930	3	178	128.460	R201	12	942.940	3	177	792.680
L206	13	922.910	3	178	115.260	R202	12	896.630	3	177	758.780
L207	13	741.650	3	178	053.240	R203	12	851.080	3	177	720.760
L208	13	644.510	3	178	020.000	R204	12	761.980	3	177	640.140
L209	13	529.060	3	177	980.510	R205	12	696.040	3	177	580.840
L210	13	411.710	3	177	940.380	R206	12	603.550	3	177	497.870
L211	13	307.950	3	177	904.890	R206X	12	598.310	3	177	493.170
L212	13	215.600	3	177	873.310	R207	12	503.390	3	177	420.720
L213	13	055.140	3	177	816.990	R208	12	410.090	3	177	358.240
L214	12	988.030	3	177	783.520	R209	12	311.770	3	177	300.800
L215	12	959.910	3	177	766.150	R210	12	208.580	3	177	249.710
L216	12	887.230	3	177	710.580	R211	12	045.020	3	177	176.150
L217	12	710.580	3	177	551.830	R212	11	889.750	3	177	106.390
L218	12	681.610	3	177	525.800	R213	11	746.760	3	177	042.150
L219	12	614.330	3	177	467.670	R214	11	629.180	3	176	988.980
L220	12	589.870	3	177	447.580	R215	11	524.900	3	176	944.270
L221	12	523.230	3	177	396.540	R216	11	471.240	3	176	923.800
L222	12	434.350	3	177	336.460	R217	11	361.880	3	176	888.600
L223	12	354.440	3	177	288.800	R218	11	306.670	3	176	873.950
L224	12	257.080	3	177	238.320	R219	10	912.120	3	176	769.270
L225	12	231.800	3	177	226.740	R220	10	692.520	3	176	707.470
L226	12	167.330	3	177	196.870	R221	10	626.870	3	176	689.720
L227	11	991.830	3	177	111.630	R222	10	509.390	3	176	658.360
L228	11	905.570	3	177	074.790	R223	10	351.140	3	176	621.740
L229	11	714.250	3	176	993.100	R224	10	196.700	3	176	604.790
L230	11	549.810	3	176	920.530	R225	10	076.750	3	176	591.080
L231	11	471.510	3	176	890.950	R226	10	050.440	3	176	588.310
L232	11	387.980	3	176	863.810	R227	9	781.960	3	176	560.040
L233	11	320.840	3	176	845.480	R228	9	649.450	3	176	545.150
L234	11	273.320	3	176	832.500	R229	9	644.640	3	176	545.650
L235	11	075.640	3	176	780.310	R230	9	592.600	3	176	538.710
L236	10	703.550	3	176	681.430	R231	9	580.870	3	176	536.600
L237	10	558.770	3	176	642.950	R232	9	564.300	3	176	533.020
L238	10	451.820	3	176	615.830	R233	9	474.530	3	176	533.690
L239	10	328.920	3	176	587.220	R234	9	245.040	3	176	537.720
L240	10	200.260	3	176	573.830	R235	8	831.730	3	176	545.830
L241	10	066.130	3	176	557.040	R236	8	773.550	3	176	543.950
L242	9	646.630	3	176	515.920	R237	8	716.390	3	176	537.270
L243	9	552.150	3	176	506.190	R238	8	663.150	3	176	525.960
L244	9	345.920	3	176	505.080	R239	8	639.790	3	176	519.370
L245	8	838.330	3	176	514.450	R240	8	573.970	3	176	496.390
L246	8	748.130	3	176	510.200	R241	8	538.770	3	176	479.790
L247	8	656.440	3	176	491.730	R242	8	200.400	3	176	312.860

Vel	16	Van	18	P764/09
Sheet		of		

PADRESERWE KOÖRDINATE / ROAD RESERVE CO-ORDINATES						
LINKERKANT/LEFT HAND SIDE				REGTERKANT/RIGHT HAND SIDE		
	Y	X	WG 21°		X	
L248	8 604.090	3 176 474.370		R243	8 015.370	3 176 221.570
L249	8 589.970	3 176 467.980		R244	7 957.440	3 176 200.470
L250	8 538.640	3 176 444.630		R245	7 911.110	3 176 186.450
L251	8 212.990	3 176 284.460		R246	7 851.430	3 176 173.750
L252	8 085.400	3 176 221.700		R247	7 811.710	3 176 168.190
L253	7 974.980	3 176 174.500		R248	7 769.510	3 176 165.450
L254	7 878.590	3 176 148.040		R249	7 658.990	3 176 167.800
L255	7 783.910	3 176 135.030		R250	7 572.640	3 176 181.870
L256	7 772.170	3 176 133.730		R251	7 197.690	3 176 267.610
L257	7 663.210	3 176 136.020		R252	7 146.740	3 176 279.260
L258	7 573.720	3 176 149.850		R253	5 968.320	3 176 547.850
L259	7 163.830	3 176 243.310		R254	4 783.040	3 176 802.490
L260	6 302.580	3 176 439.500		R255	4 688.540	3 176 822.790
L261	5 882.640	3 176 533.980		R256	4 539.430	3 176 854.790
L262	4 845.900	3 176 756.850		R257	4 434.650	3 176 867.950
L263	4 763.640	3 176 773.080		R258	4 352.690	3 176 867.440
L264	4 540.550	3 176 822.480		R259	4 316.690	3 176 863.530
L265	4 432.780	3 176 836.440		R260	4 234.020	3 176 848.800
L266	4 354.490	3 176 835.950		R261	4 227.140	3 176 840.783
L267	4 321.160	3 176 832.330		R262	4 108.450	3 176 814.770
L268	4 234.310	3 176 816.850		R263	4 011.010	3 176 793.470
L269	4 229.110	3 176 829.990		R264	3 916.720	3 176 772.850
L270	4 205.890	3 176 824.870		R265	3 887.380	3 176 766.430
L271	4 174.460	3 176 817.930		R266	3 865.880	3 176 762.390
L272	4 127.630	3 176 807.590		R267	3 844.660	3 176 759.580
L273	4 108.550	3 176 803.380		R268	3 821.610	3 176 758.280
L274	4 085.760	3 176 798.340		R269	3 797.640	3 176 757.320
L275	4 017.400	3 176 783.250		R270	3 760.160	3 176 759.110
L276	4 011.110	3 176 781.860		R271	3 649.810	3 176 772.970
L277	3 976.170	3 176 774.150		R272	3 631.850	3 176 776.100
L278	3 916.820	3 176 761.420		R273	3 623.550	3 176 777.540
L279	3 888.530	3 176 755.360		R274	3 616.800	3 176 778.380
L280	3 867.940	3 176 751.260		R275	3 595.000	3 176 781.110
L281	3 860.230	3 176 750.350		R276	3 404.380	3 176 786.700
L282	3 845.220	3 176 748.580		R277	3 402.140	3 176 786.760
L283	3 831.910	3 176 747.550		R278	3 375.260	3 176 784.630
L284	3 821.930	3 176 746.780		R279	3 320.370	3 176 777.530
L285	3 813.030	3 176 746.660		R280	3 299.060	3 176 775.680
L286	3 797.540	3 176 746.450		R281	3 279.670	3 176 775.580
L287	3 784.680	3 176 746.760		R282	3 271.280	3 176 776.690
L288	3 771.230	3 176 747.080		R283	3 258.800	3 176 778.340
L289	3 756.320	3 176 748.880		R284	3 238.060	3 176 782.560
L290	3 727.950	3 176 752.300		R285	3 211.870	3 176 791.120
L291	3 699.580	3 176 755.720		R286	3 043.030	3 176 870.150
L292	3 649.170	3 176 761.800		R287	2 899.050	3 176 938.480
L293	3 638.240	3 176 763.030		R288	2 735.260	3 177 015.790
L294	3 623.490	3 176 764.680		R289	2 719.200	3 177 022.950
L295	3 598.380	3 176 766.870		R290	2 703.930	3 177 028.020
L296	3 579.940	3 176 767.710		R291	2 687.120	3 177 031.620
L297	3 429.970	3 176 772.330		R292	2 613.210	3 177 039.600
L298	3 409.630	3 176 772.470		R293	2 595.020	3 177 045.270

Vel	17	Van	18	P764/09
Sheet		of		

PADRESERWE KOÖRDINATE / ROAD RESERVE CO-ORDINATES						
LINKERKANT/LEFT HAND SIDE				REGTERKANT/RIGHT HAND SIDE		
	Y	X	WG 21°		X	
L299	3 404.070	3 176	772.070	R294	2 576.030	3 177 053.370
L300	3 384.750	3 176	770.700	R295	2 560.620	3 177 062.390
L301	3 310.750	3 176	761.290	R296	2 555.420	3 177 065.430
L302	3 291.010	3 176	759.950	R297	2 530.040	3 177 087.730
L303	3 272.340	3 176	760.650	R298	2 510.670	3 177 104.750
L304	3 263.960	3 176	761.480	R299	2 497.230	3 177 115.600
L305	3 252.370	3 176	762.630	R300	2 476.660	3 177 128.640
L306	3 235.220	3 176	766.750	R301	2 401.890	3 177 162.460
L307	3 222.510	3 176	770.200	R302	2 378.970	3 177 172.320
L308	3 207.810	3 176	775.210	R303	2 362.860	3 177 178.650
L309	2 731.630	3 177	000.600	R304	2 310.400	3 177 196.320
L310	2 713.400	3 177	008.530	R305	2 003.330	3 177 296.570
L311	2 693.840	3 177	014.620	R306	1 909.360	3 177 315.770
L312	2 672.220	3 177	018.590	R307	1 877.870	3 177 321.210
L313	2 625.090	3 177	024.010			
L314	2 603.960	3 177	028.720			
L315	2 582.910	3 177	036.090			
L316	2 563.360	3 177	045.760			
L317	2 550.490	3 177	053.820			
L318	2 538.120	3 177	062.730			
L319	2 497.650	3 177	097.210			
L320	2 479.770	3 177	110.180			
L321	2 463.500	3 177	118.850			
L322	2 395.210	3 177	149.410			
L323	2 374.800	3 177	158.180			
L324	2 343.730	3 177	169.830			
L325	2 034.030	3 177	272.220			
L326	2 016.310	3 177	277.400			
L327	1 996.400	3 177	281.780			
L328	1 877.190	3 177	301.900			

Vel	18	Van	18	P764/09
Sheet		of		