

Government Gazette Staatskoerant

REPUBLIC OF SOUTH AFRICA
REPUBLIEK VAN SUID-AFRIKA

Vol. 544

Pretoria, 15 October 2010
Oktober

No. 33632

IMPORTANT NOTICE

The Government Printing Works will not be held responsible for faxed documents not received due to errors on the fax machine or faxes received which are unclear or incomplete. Please be advised that an "OK" slip, received from a fax machine, will not be accepted as proof that documents were received by the GPW for printing. If documents are faxed to the GPW it will be the sender's responsibility to phone and confirm that the documents were received in good order.

Furthermore the Government Printing Works will also not be held responsible for cancellations and amendments which have not been done on original documents received from clients.

CONTENTS**INHOUD**

<i>No.</i>	<i>Page No.</i>	<i>Gazette No.</i>	<i>No.</i>	<i>Bladsy No.</i>	<i>Koerant No.</i>
GOVERNMENT NOTICE			GOEWERMENSKENNISGEWING		
Transport, Department of			Vervoer, Departement van		
<i>Government Notice</i>			<i>Goewermentskennisgewing</i>		
906			906		
South African National Roads Agency Limited and the National Roads Act (7/1998): The South African National Roads Agency Limited: Declaration amendment of National Road N14 Section 4: Amendment of Declaration No. 629 of 2005	3	33632	Suid-Afrikaanse Nasionale Padagentskap Beperk en die Nasionale Paaie Wet (7/1998): Die Suid-Afrikaanse Nasionale Padagentskap Beperk: Verklaring wysiging van Nasionale Pad N14 Seksie 4: Wysiging van Verklaring No. 629 van 2005	4	33632

GOVERNMENT NOTICE

DEPARTMENT OF TRANSPORT

No. 906

15 October 2010

THE SOUTH AFRICAN NATIONAL ROADS AGENCY LIMITED

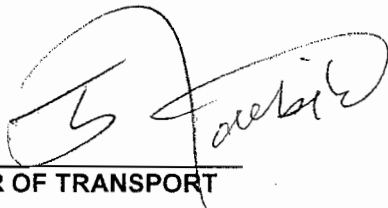
Registration No: 98/09584/06

DECLARATION AMENDMENT OF NATIONAL ROAD N14 SECTION 4

AMENDMENT OF DECLARATION NO. 629 OF 2005

By virtue of section 40(1)(b) of the South African National Roads Agency Limited and the National Roads Act, 1998 (Act No. 7 of 1998), I hereby amend Declaration No. 629 of 2005, by substituting the descriptive section of the route from Keimoes up to Upington, with the subjoined sheets 1 to 10 of Plan No. P765/09.

(National Road N14 Section 4: Keimoes – Upington)



MINISTER OF TRANSPORT

GOEWERMENSKENNISGEWING

DEPARTEMENT VAN VERVOER

No. 906

15 Oktober 2010

DIE SUID-AFRIKAANSE NASIONALE PADAGENTSKAP BEPERK

Registrasie No: 98/09584/06

VERKLARING WYSIGING VAN NASIONALE PAD N14 SEKSIE 4

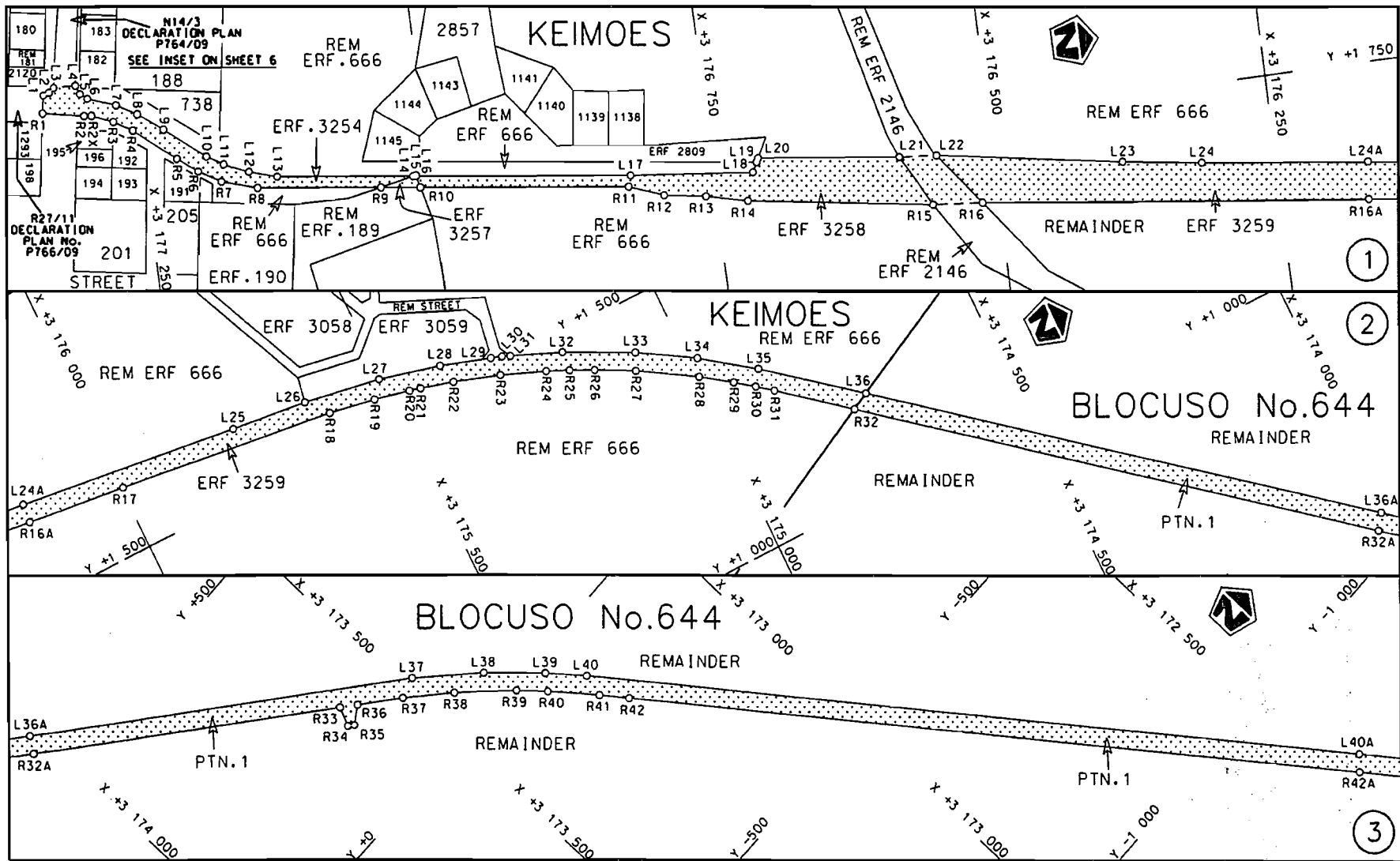
WYSIGING VAN VERKLARING NO. 629 VAN 2005

Kragtens Artikel 40(1)(b) van die Suid Afrikaanse Nasionale Padagentskap Beperk en die Nasionale Paaie Wet, 1998 (Wet no. 7 van 1998), wysig ek hiermee Verklaring no. 629 van 2005, deur die beskrywende gedeelte van die roete vanaf Keimoes tot by Upington, te vervang met meegaande velle 1 tot 10 van Plan no. P765/09

(Nasionale Pad N14 Seksie 4: Keimoes – Upington)

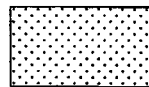


MINISTER VAN VERVOER



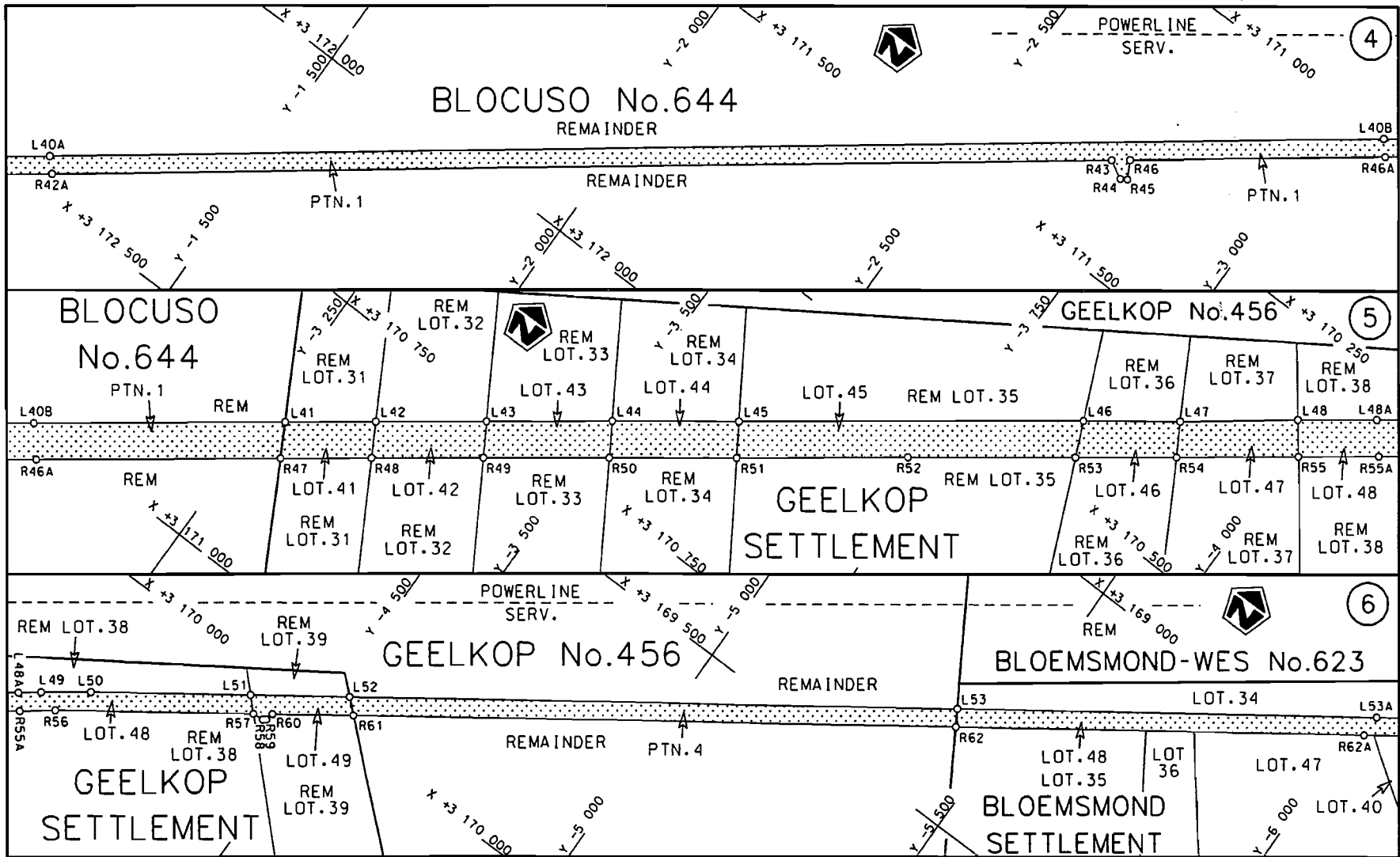
Die Suid Afrikaanse Nasionale Padagentskap Beperk
The South African National Roads Agency Limited

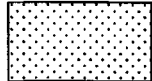
Die figuur getoon
The figure shown

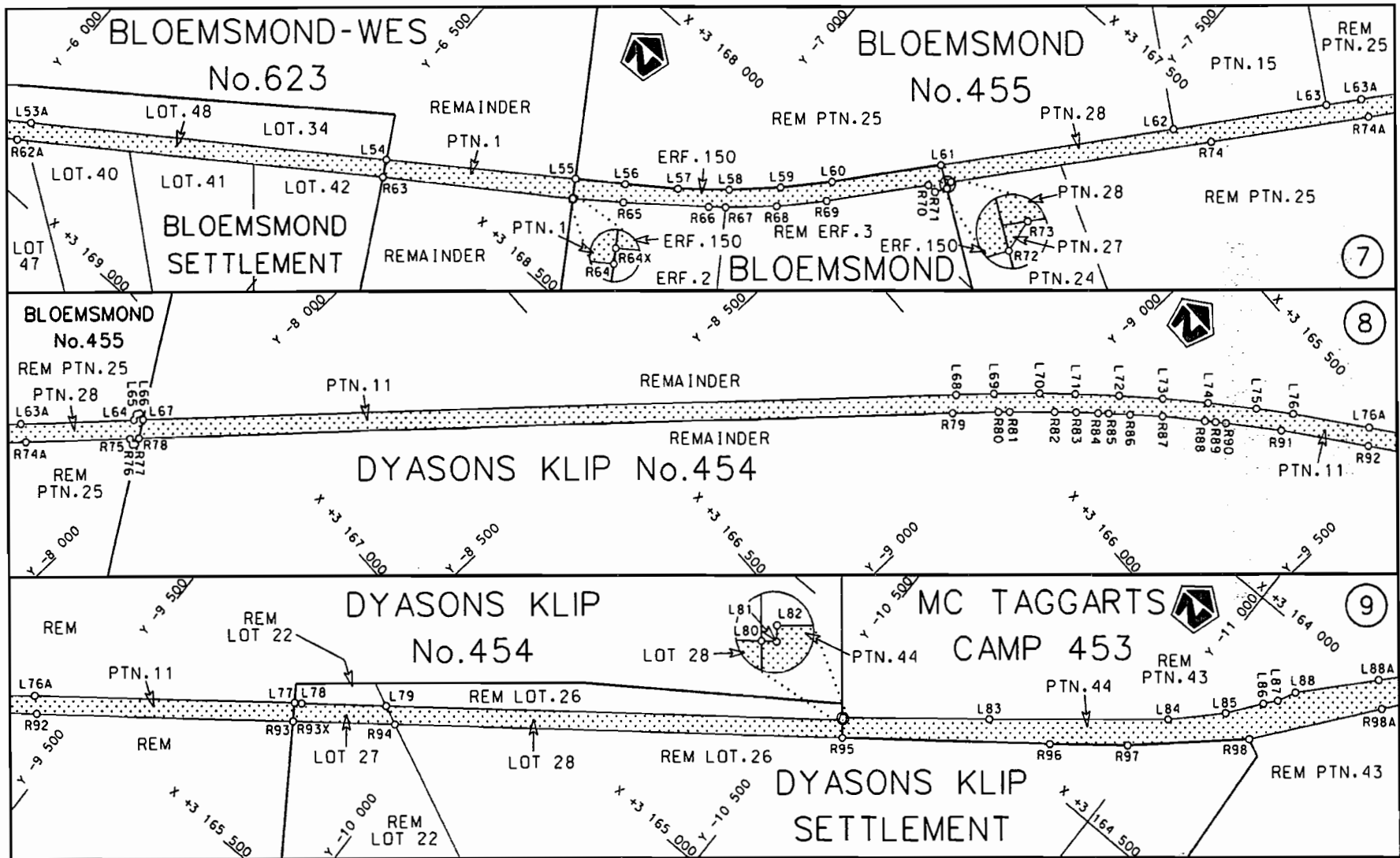



stel die padreserwe voor van 'n gedeelte
represents the road reserve of a portion
van Nasionale Roete N14 Seksie Section
of National Route 4

Vel Sheet 1 van of 10
Plan P765/09



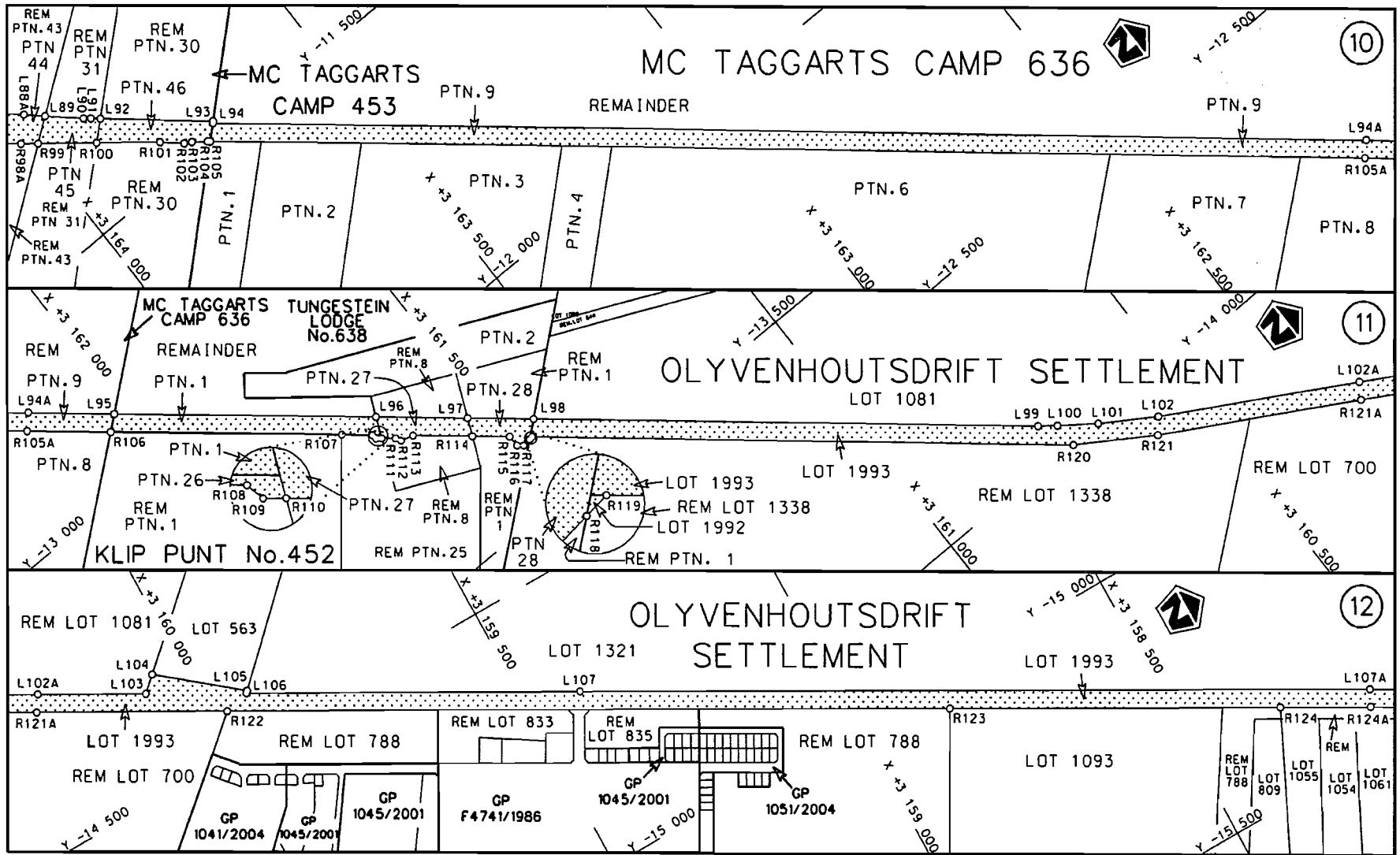
<p>Die Suid Afrikaanse Nasionale Padagentskap Beperk The South African National Roads Agency Limited</p>	<p>Die figuur getoon The figure shown</p> 	<p>steldie padreserwe voor van 'n gedeelte represents the road reserve of a portion van Nasionale Roete of National Route</p> <p>N14</p> <p>Seksie Section</p> <p>4</p>	<p>Vel Sheet</p> <p>2 van of 10</p> <p>Plan P765/09</p>
--	--	---	---

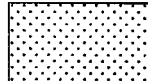


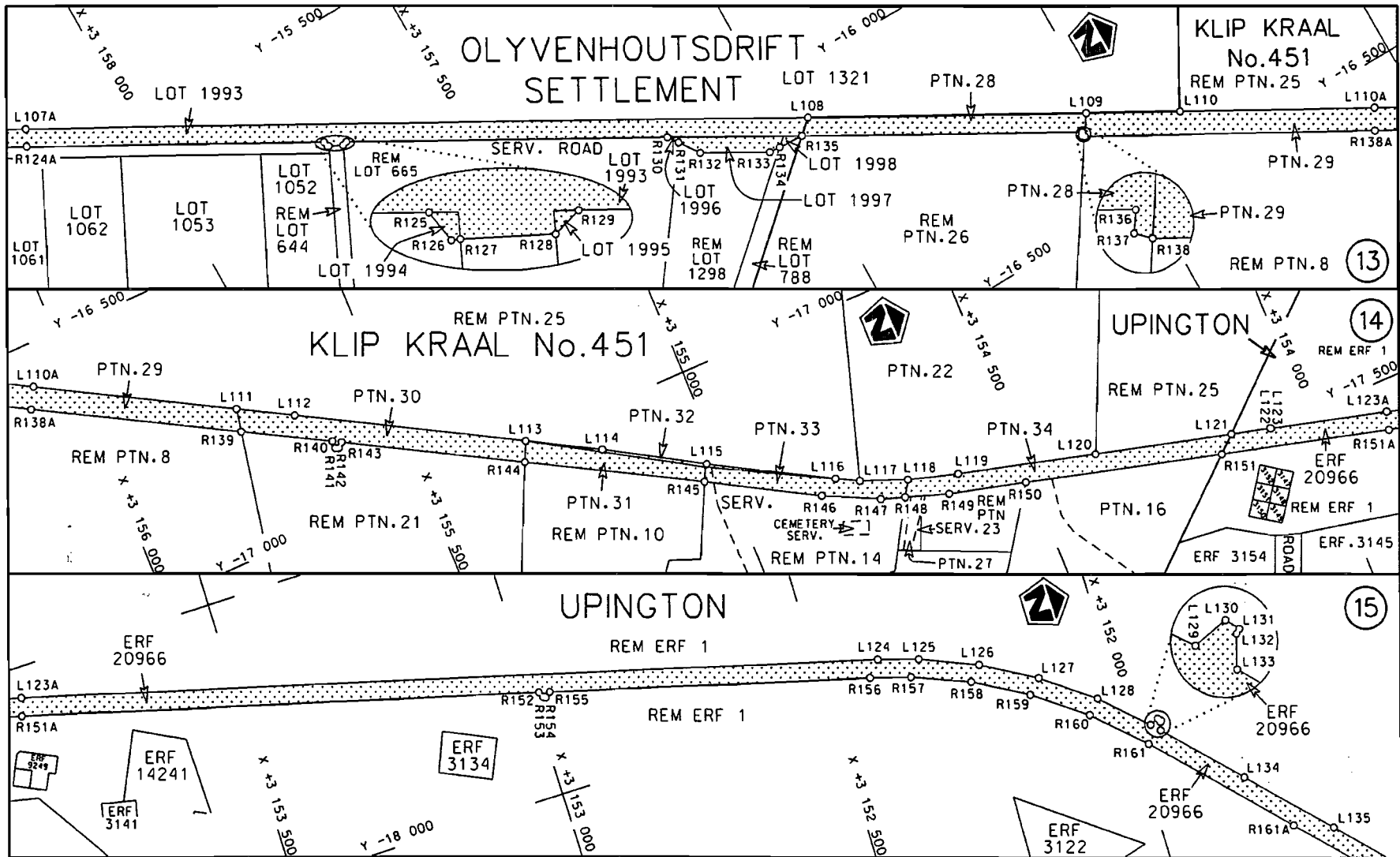
Die Suid Afrikaanse Nasionale Padagentskap Beperk	Die figuur getoon		steldie padreserwe voor van 'n gedeelte	Vel Sheet 3 van 10
The South African National Roads Agency Limited	The figure shown		represents the road reserve of a portion van Nasionale Roete N14 Seksie 4	Plan P765/09

STAATSKOEFERANT, 15 OKTOBER 2010

No. 33632 7

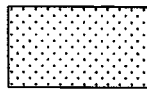


<p>Die Suid Afrikaanse Nasionale Podogenskap Beperk The South African National Roads Agency Limited</p>	<p>Die figuur getoon The figure shown</p> 	<p>stei die padreserwe voor van 'n gedeelte represents the road reserve of a portion van Nasionale Roete N14 Seksie of National Route Section</p> <p style="text-align: right;">4</p>	<p>Vel Sheet 4 van 10 Plan P765/09</p>
---	--	---	--



Die Suid Afrikaanse Nasionale Padagentskap Beperk
The South African National Roads Agency Limited

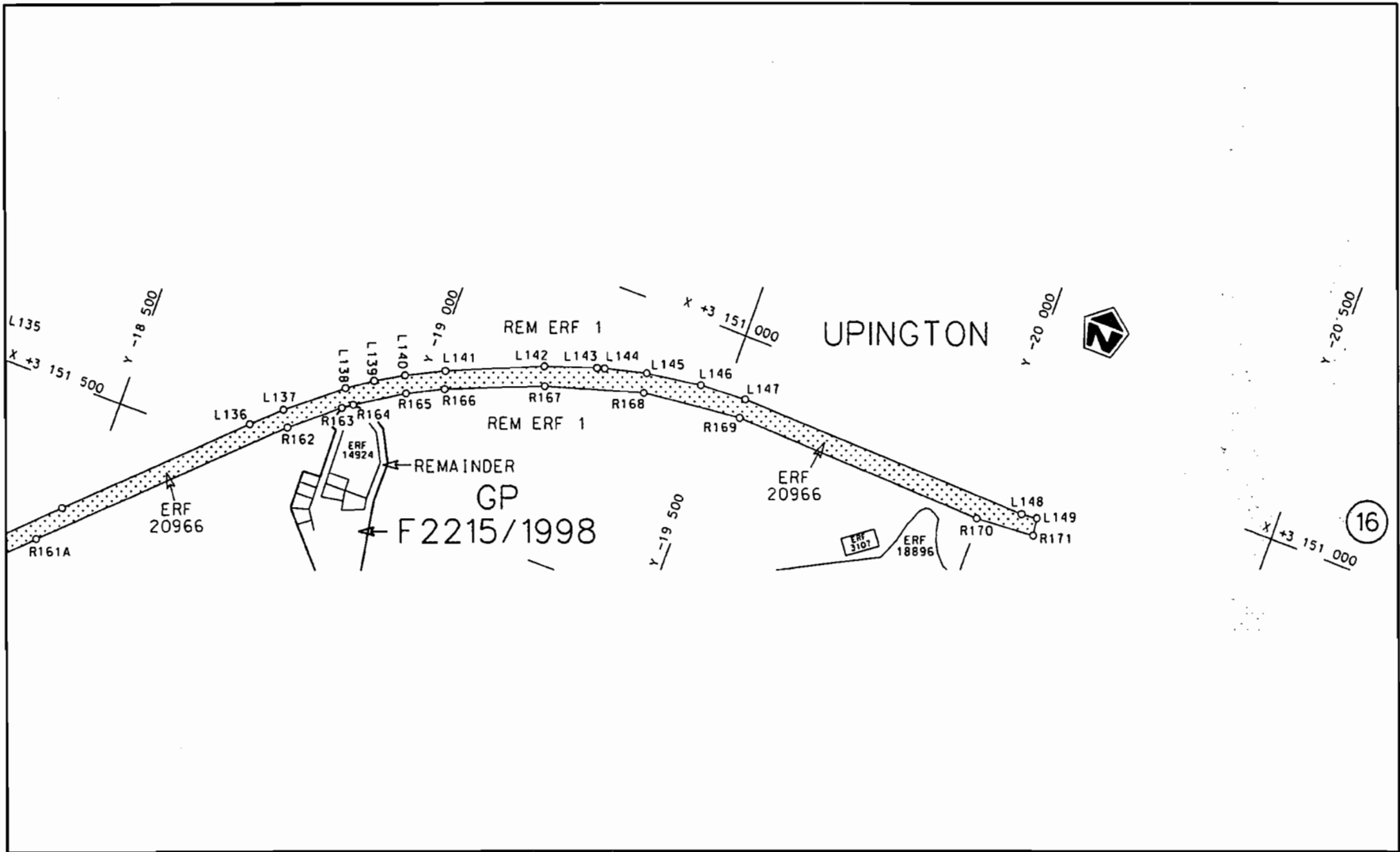
Die figuur getoon
The figure shown




steldie padreserve voor van 'n gedeelte
represents the road reserve of a portion
van Nasionale Roete N14 Seksie
of National Route Section 4

Vel
Sheet 5 van
of 10

Plan P765/09



<p>Die Suid Afrikaanse Nasionale Padagentskap Beperk The South African National Roads Agency Limited</p>	<p>Die figuur getoon The figure shown</p>		<p>steldie padreserwe voor van 'n gedeelte represents the road reserve of a portion van Nasionale Roete N14 Seksie of National Route Section 4</p>	<p>Vel Sheet 6 van of 10</p>
				<p>Plan P765/09</p>

PADRESERWE KOÖRDINATE / ROAD RESERVE CO-ORDINATES						
LINKERKANT/LEFT HAND SIDE				REGTERKANT/RIGHT HAND SIDE		
	Y	X	WG 21°		Y	X
L1	1 872.590	3 177 331.120		R1	1 857.280	3 177 333.740
L2	1 874.270	3 177 325.870		R2	1 850.410	3 177 297.560
L3	1 877.870	3 177 321.210		R2X	1 849.670	3 177 291.090
L4	1 877.190	3 177 301.900		R3	1 842.030	3 177 272.590
L5	1 869.550	3 177 298.840		R4	1 832.530	3 177 256.400
L6	1 864.730	3 177 292.840		R5	1 803.290	3 177 220.510
L7	1 855.710	3 177 268.380		R6	1 790.080	3 177 203.060
L8	1 845.690	3 177 250.580		R7	1 778.590	3 177 183.720
L9	1 829.820	3 177 228.940		R8	1 769.050	3 177 152.190
L10	1 801.810	3 177 194.080		R9	1 755.290	3 177 043.660
L11	1 793.300	3 177 179.790		R10	1 750.940	3 177 009.410
L12	1 783.880	3 177 158.150		R11	1 727.640	3 176 825.720
L13	1 776.300	3 177 133.480		R12	1 716.430	3 176 795.640
L14	1 761.260	3 177 014.690		R13	1 710.940	3 176 758.970
L15	1 761.800	3 177 012.090		R14	1 702.440	3 176 722.180
L16	1 760.910	3 177 011.870		R15	1 678.050	3 176 558.640
L17	1 736.980	3 176 822.840		R16	1 674.030	3 176 514.670
L18	1 726.060	3 176 714.720		R17	1 611.390	3 175 996.880
L19	1 734.490	3 176 710.240		R18	1 560.840	3 175 609.200
L20	1 737.850	3 176 708.460		R19	1 546.330	3 175 528.480
L21	1 722.520	3 176 583.080		R20	1 532.410	3 175 466.630
L22	1 719.770	3 176 550.200		R21	1 527.570	3 175 447.490
L23	1 693.000	3 176 385.470		R22	1 511.380	3 175 390.710
L24	1 683.150	3 176 315.670		R23	1 483.930	3 175 309.650
L25	1 614.010	3 175 775.580		R24	1 453.600	3 175 233.610
L26	1 596.730	3 175 639.830		R25	1 436.620	3 175 196.210
L27	1 573.820	3 175 505.740		R26	1 417.070	3 175 156.140
L28	1 546.650	3 175 399.590		R27	1 383.040	3 175 091.700
L29	1 517.730	3 175 311.960		R28	1 324.020	3 174 995.890
L30	1 511.070	3 175 292.820		R29	1 288.170	3 174 944.730
L31	1 505.330	3 175 278.960		R30	1 264.160	3 174 912.590
L32	1 469.880	3 175 193.490		R31	1 243.120	3 174 885.660
L33	1 411.610	3 175 078.460		R32	1 150.190	3 174 771.820
L34	1 354.260	3 174 984.450		R33	197.220	3 173 600.000
L35	1 289.390	3 174 894.890		R34	165.830	3 173 614.660
L36	1 165.500	3 174 741.120		R35	158.220	3 173 605.680
L37	137.860	3 173 477.250		R36	177.730	3 173 576.080
L38	49.990	3 173 384.290		R37	126.770	3 173 513.310
L39	-31.270	3 173 310.170		R38	65.990	3 173 445.670
L40	-87.920	3 173 264.300		R39	-13.990	3 173 366.830
L41	-3 267.270	3 170 866.340		R40	-55.570	3 173 330.490
L42	-3 332.190	3 170 817.170		R41	-126.920	3 173 273.630
L43	-3 410.310	3 170 758.540		R42	-169.190	3 173 242.030
L44	-3 499.710	3 170 691.090		R43	-2 720.530	3 171 318.130
L45	-3 589.310	3 170 623.660		R44	-2 752.110	3 171 334.960
L46	-3 834.620	3 170 438.430		R45	-2 763.080	3 171 328.200
L47	-3 904.590	3 170 386.610		R46	-2 746.990	3 171 298.040
L48	-3 987.400	3 170 322.650		R47	-3 282.570	3 170 893.920
L49	-4 076.670	3 170 255.280		R48	-3 348.070	3 170 844.630
L50	-4 147.540	3 170 203.030		R49	-3 426.800	3 170 785.550
L51	-4 378.670	3 170 040.120		R50	-3 516.660	3 170 718.060

Vel 7 Van 10
Sheet of

P765/09

PADRESERWE KOÖRDINATE / ROAD RESERVE CO-ORDINATES									
LINKERKANT/LEFT HAND SIDE				REGTERKANT/RIGHT HAND SIDE					
	Y	X	WG 21°		Y	X			
L52	-4	524.220	3 169	937.960	R51	-3	606.620	3 170	650.270
L53	-5	407.770	3 169	315.340	R52	-3	728.650	3 170	557.500
L54	-6	541.340	3 168	516.740	R53	-3	847.830	3 170	468.230
L55	-6	815.680	3 168	322.770	R54	-3	920.600	3 170	413.370
L56	-6	889.040	3 168	271.430	R55	-4	006.930	3 170	347.930
L57	-6	964.860	3 168	216.020	R56	-4	115.460	3 170	265.620
L58	-7	034.670	3 168	157.160	R57	-4	401.840	3 170	063.440
L59	-7	101.010	3 168	093.900	R58	-4	421.270	3 170	061.980
L60	-7	164.860	3 168	025.470	R59	-4	425.950	3 170	058.080
L61	-7	293.280	3 167	875.070	R60	-4	429.560	3 170	043.970
L62	-7	566.990	3 167	554.470	R61	-4	548.720	3 169	959.840
L63	-7	745.640	3 167	344.730	R62	-5	424.010	3 169	342.150
L64	-7	918.490	3 167	141.750	R63	-6	556.660	3 168	544.060
L65	-7	914.150	3 167	131.590	R64	-6	834.830	3 168	351.990
L66	-7	917.070	3 167	128.230	R64X	-6	834.520	3 168	351.520
L67	-7	929.140	3 167	129.170	R65	-6	906.990	3 168	297.630
L68	-8	870.740	3 166	025.540	R66	-7	026.240	3 168	203.450
L69	-8	914.460	3 165	974.390	R67	-7	049.270	3 168	184.310
L70	-8	968.250	3 165	913.840	R68	-7	116.810	3 168	122.810
L71	-9	012.040	3 165	867.140	R69	-7	178.900	3 168	057.050
L72	-9	067.260	3 165	810.610	R70	-7	299.040	3 167	916.600
L73	-9	123.970	3 165	755.510	R71	-7	315.580	3 167	917.600
L74	-9	183.900	3 165	700.490	R72	-7	327.860	3 167	898.870
L75	-9	249.020	3 165	643.420	R73	-7	326.100	3 167	885.660
L76	-9	299.980	3 165	600.890	R74	-7	632.150	3 167	526.790
L77	-9	776.140	3 165	232.620	R75	-7	937.170	3 167	169.010
L78	-9	782.820	3 165	228.740	R76	-7	948.020	3 167	172.010
L79	-9	906.250	3 165	134.220	R77	-7	950.670	3 167	168.430
L80	-10	549.420	3 164	639.670	R78	-7	947.850	3 167	156.470
L81	-10	550.280	3 164	639.070	R79	-8	889.580	3 166	051.590
L82	-10	547.760	3 164	635.720	R80	-8	942.620	3 165	989.860
L83	-10	752.240	3 164	472.570	R81	-8	956.080	3 165	974.620
L84	-11	001.110	3 164	270.210	R82	-9	009.730	3 165	915.540
L85	-11	074.010	3 164	197.050	R83	-9	036.240	3 165	887.360
L86	-11	116.100	3 164	141.730	R84	-9	063.710	3 165	859.000
L87	-11	132.800	3 164	121.480	R85	-9	077.260	3 165	845.280
L88	-11	148.520	3 164	090.840	R86	-9	104.630	3 165	818.270
L89	-11	275.250	3 163	952.590	R87	-9	145.980	3 165	778.330
L90	-11	326.160	3 163	895.970	R88	-9	202.920	3 165	725.830
L91	-11	328.570	3 163	892.590	R89	-9	217.060	3 165	713.140
L92	-11	340.670	3 163	878.050	R90	-9	231.180	3 165	700.670
L93	-11	470.850	3 163	723.030	R91	-9	306.680	3 165	636.150
L94	-11	473.140	3 163	725.520	R92	-9	430.480	3 165	539.460
L95	-12	883.480	3 162	019.180	R93	-9	794.290	3 165	259.880
L96	-13	181.840	3 161	657.790	R93X	-9	794.090	3 165	259.320
L97	-13	285.700	3 161	532.240	R94	-9	938.210	3 165	149.040
L98	-13	360.510	3 161	441.940	R95	-10	569.220	3 164	664.120
L99	-13	934.220	3 160	746.960	R96	-10	863.220	3 164	438.210
L100	-13	955.350	3 160	719.360	R97	-10	972.740	3 164	351.660
L101	-13	998.100	3 160	660.770	R98	-11	135.100	3 164	205.710
L102	-14	056.820	3 160	568.500	R99	-11	303.680	3 163	991.600

Vel	8	Van	10	P765/09
Sheet		of		

PADRESERWE KOÖRDINATE / ROAD RESERVE CO-ORDINATES

LINKERKANT/LEFT HAND SIDE				REGTERKANT/RIGHT HAND SIDE			
	Y	X	WG 21°		Y	X	
L103	-14	330.390	3 160 080.130	R100	-11	368.530	3 163 908.990
L104	-14	306.490	3 160 053.430	R101	-11	439.120	3 163 819.300
L105	-14	414.740	3 159 920.710	R102	-11	470.500	3 163 783.140
L106	-14	417.750	3 159 923.990	R103	-11	474.390	3 163 774.530
L107	-14	707.900	3 159 405.620	R104	-11	494.260	3 163 749.060
L108	-16	079.420	3 156 956.410	R105	-11	494.250	3 163 748.480
L109	-16	321.200	3 156 522.410	R106	-12	903.600	3 162 043.750
L110	-16	402.840	3 156 375.510	R107	-13	166.710	3 161 725.170
L111	-16	749.230	3 155 752.250	R108	-13	201.970	3 161 682.790
L112	-16	799.880	3 155 661.290	R109	-13	210.630	3 161 681.000
L113	-17	000.460	3 155 301.810	R110	-13	216.650	3 161 673.300
L114	-17	066.570	3 155 183.570	R111	-13	234.190	3 161 651.640
L115	-17	161.950	3 155 021.950	R112	-13	241.010	3 161 650.990
L116	-17	274.900	3 154 819.230	R113	-13	248.270	3 161 626.690
L117	-17	295.130	3 154 781.010	R114	-13	315.290	3 161 545.440
L118	-17	326.340	3 154 701.290	R115	-13	357.660	3 161 493.980
L119	-17	352.410	3 154 613.880	R116	-13	377.790	3 161 493.520
L120	-17	416.100	3 154 374.930	R117	-13	385.320	3 161 484.440
L121	-17	479.430	3 154 138.190	R118	-13	383.490	3 161 469.640
L122	-17	497.790	3 154 068.890	R119	-13	382.760	3 161 463.490
L123	-17	498.370	3 154 069.010	R120	-13	999.550	3 160 718.640
L124	-17	947.160	3 152 392.890	R121	-14	080.910	3 160 589.380
L125	-17	968.070	3 152 323.210	R122	-14	428.250	3 159 968.690
L126	-18	009.920	3 152 222.820	R123	-15	058.790	3 158 842.950
L127	-18	063.680	3 152 127.750	R124	-15	348.230	3 158 325.420
L128	-18	128.070	3 152 039.480	R125	-15	686.040	3 157 722.380
L129	-18	199.380	3 151 962.820	R126	-15	695.270	3 157 720.910
L130	-18	193.070	3 151 947.370	R127	-15	696.190	3 157 718.640
L131	-18	198.300	3 151 942.740	R128	-15	707.670	3 157 696.180
L132	-18	199.920	3 151 944.540	R129	-15	705.350	3 157 687.890
L133	-18	214.110	3 151 948.810	R130	-15	983.113	3 157 192.058
L134	-18	336.440	3 151 830.810	R131	-16	000.870	3 157 179.290
L135	-18	466.990	3 151 705.330	R132	-16	036.220	3 157 154.590
L136	-18	729.970	3 151 451.850	R133	-16	097.340	3 157 045.640
L137	-18	777.160	3 151 407.550	R134	-16	098.530	3 157 025.860
L138	-18	867.650	3 151 333.700	R135	-16	101.240	3 156 981.190
L139	-18	910.620	3 151 304.400	R136	-16	346.150	3 156 544.770
L140	-18	957.840	3 151 276.630	R137	-16	351.220	3 156 548.270
L141	-19	022.250	3 151 244.410	R138	-16	354.800	3 156 544.650
L142	-19	184.580	3 151 175.030	R139	-16	788.770	3 155 759.960
L143	-19	273.180	3 151 145.010	R140	-16	867.120	3 155 618.180
L144	-19	285.930	3 151 141.350	R141	-16	879.690	3 155 618.370
L145	-19	358.300	3 151 122.990	R142	-16	882.350	3 155 612.100
L146	-19	454.740	3 151 108.370	R143	-16	875.030	3 155 603.710
L147	-19	537.260	3 151 103.430	R144	-17	033.630	3 155 317.340
L148	-20	069.100	3 151 116.240	R145	-17	188.720	3 155 037.760
L149	-20	097.120	3 151 113.640	R146	-17	292.290	3 154 853.490
				R147	-17	338.420	3 154 758.570
				R148	-17	352.170	3 154 717.170
				R149	-17	377.690	3 154 642.220
				R150	-17	412.890	3 154 507.990

Vel	9	Van	10	P765/09
Sheet		of		

PADRESERWE KOÖRDINATE / ROAD RESERVE CO-ORDINATES						
LINKERKANT/LEFT HAND SIDE			REGTERKANT/RIGHT HAND SIDE			
Y	X	WG 21°	Y	X		
			R151	-17 504.340	3 154	167.500
			R152	-17 820.520	3 152	986.030
			R153	-17 830.470	3 152	980.950
			R154	-17 832.540	3 152	976.940
			R155	-17 825.550	3 152	967.390
			R156	-17 973.180	3 152	415.760
			R157	-17 993.530	3 152	345.650
			R158	-18 033.690	3 152	245.340
			R159	-18 086.300	3 152	151.070
			R160	-18 150.710	3 152	061.550
			R161	-18 229.580	3 151	976.450
			R162	-18 794.530	3 151	433.770
			R163	-18 873.270	3 151	368.380
			R164	-18 890.660	3 151	356.070
			R165	-18 970.480	3 151	305.320
			R166	-19 031.780	3 151	274.410
			R167	-19 197.130	3 151	206.850
			R168	-19 365.140	3 151	156.550
			R169	-19 539.270	3 151	136.920
			R170	-19 996.860	3 151	151.720
			R171	-20 101.340	3 151	143.840

Vel	10	Van	10	P765/09
Sheet		of		