

# Government Gazette Staatskoerant

REPUBLIC OF SOUTH AFRICA  
REPUBLIEK VAN SUID-AFRIKA

Vol. 544

Pretoria, 19 October  
Oktober 2010

**No. 33636**

**IMPORTANT NOTICE**

The Government Printing Works will not be held responsible for faxed documents not received due to errors on the fax machine or faxes received which are unclear or incomplete. Please be advised that an "OK" slip, received from a fax machine, will not be accepted as proof that documents were received by the GPW for printing. If documents are faxed to the GPW it will be the sender's responsibility to phone and confirm that the documents were received in good order.

Furthermore the Government Printing Works will also not be held responsible for cancellations and amendments which have not been done on original documents received from clients.

**CONTENTS****INHOUD**

<i>No.</i>	<i>Page No.</i>	<i>Gazette No.</i>	<i>No.</i>	<i>Bladsy No.</i>	<i>Koerant No.</i>
<b>GOVERNMENT NOTICE</b>			<b>GOEWERMENTSKENNISGEWING</b>		
<b>Transport, Department of</b>			<b>Vervoer, Departement van</b>		
<i>Government Notice</i>			<i>Goewermentskennisgewing</i>		
910			910		
South African National Roads Agency Limited and the National Roads Act (7/1998): The South African National Roads Agency Limited: Declaration amendment of National Road N5 Section 1: Amendment of Declaration No. 547 of 2003 .....	3	33636	Suid-Afrikaanse Nasionale Padagentskap Beperk en die Nasionale Paaie Wet (7/1998): Die Suid-Afrikaanse Nasionale Padagentskap Beperk: Verklaring wysiging van Nasionale Pad N5 Seksie 1: Wysiging van Verklaring No. 547 van 2003 .....	4	33636

---

## GOVERNMENT NOTICE

---

### DEPARTMENT OF TRANSPORT

No. 910

19 October 2010

## THE SOUTH AFRICAN NATIONAL ROADS AGENCY LIMITED

Registration No: 98/09584/06

---

### DECLARATION AMENDMENT OF NATIONAL ROAD N5 SECTION 1

#### AMENDMENT OF DECLARATION NO. 547 OF 2003

By virtue of section 40(1)(b) of the South African National Roads Agency Limited and the National Roads Act, 1998 (Act No. 7 of 1998), I hereby amend Declaration No. 547 of 2003 Annexure paragraph (l) by substituting the descriptive section from Harrismith up to Kestell, with the subjoined sheets 1 to 14 of Plan No. P781/09.

(National Road N5 Section 1: Harrismith – Kestell)



MINISTER OF TRANSPORT

---

## GOEWERMENTSKENNISGEWING

---

### DEPARTEMENT VAN VERVOER

No. 910

19 Oktober 2010

## DIE SUID-AFRIKAANSE NASIONALE PADAGENTSKAP BEPERK

Registrasie No: 98/09584/06

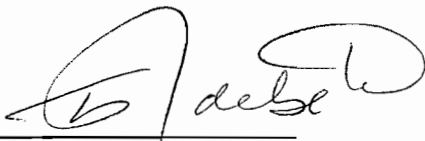
---

### VERKLARING WYSIGING VAN NASIONALE PAD N5 SEKSIE 1.

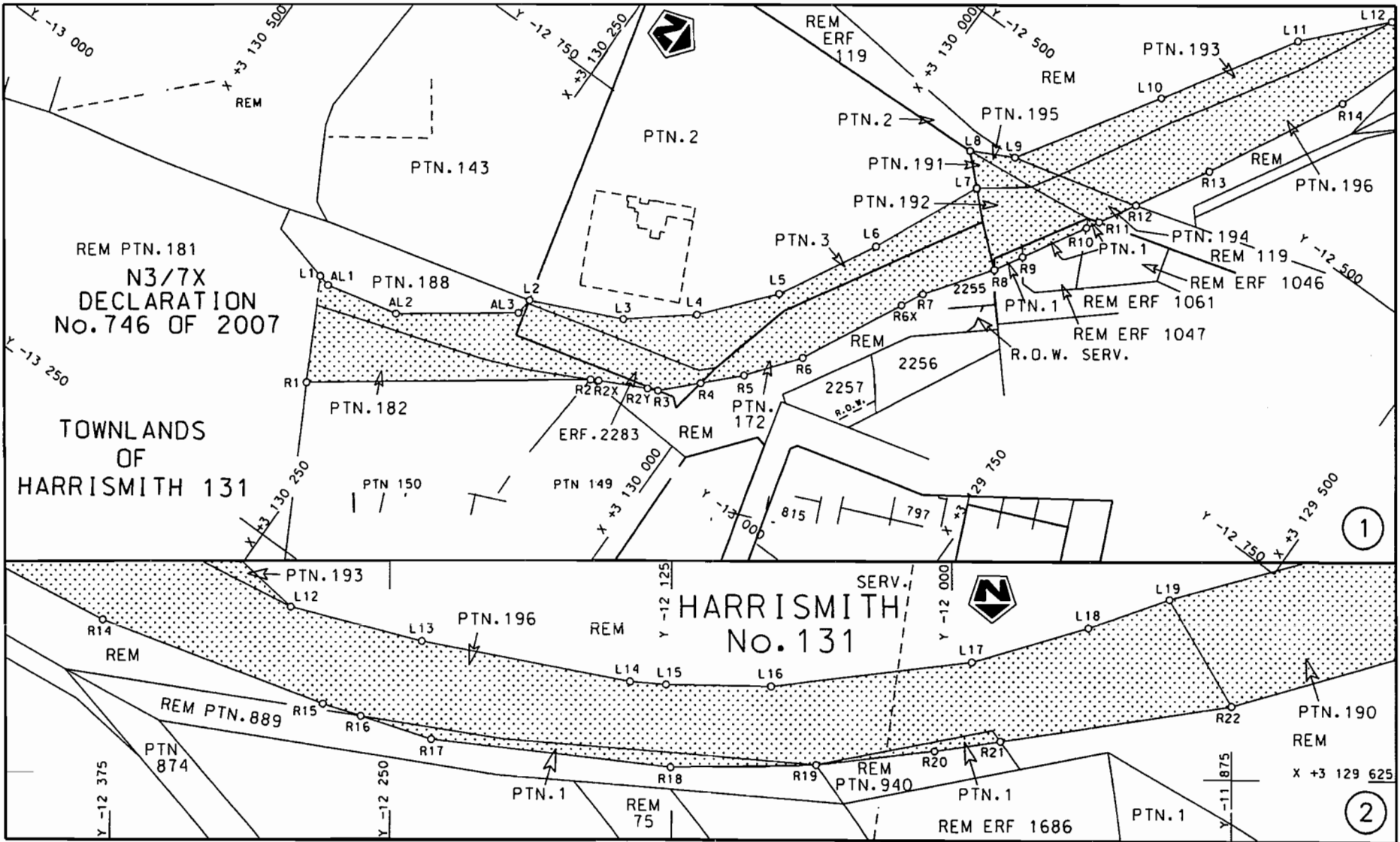
#### WYSIGING VAN VERKLARING NO. 547 VAN 2003

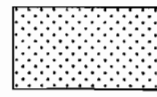
Kragtens Artikel 40(1)(b) van die Suid-Afrikaanse Nasionale Padagentskap Beperk en die Nasionale Paaie Wet, 1998 (Wet no. 7 van 1998), wysig ek hiermee Verklaring no. 547 van 2003 Bylae paragraaf (I), deur die beskrywende gedeelte vanaf Harrismith tot by Kestell, te vervang met meegaande velle 1 tot 14 van Plan no. P781/09.

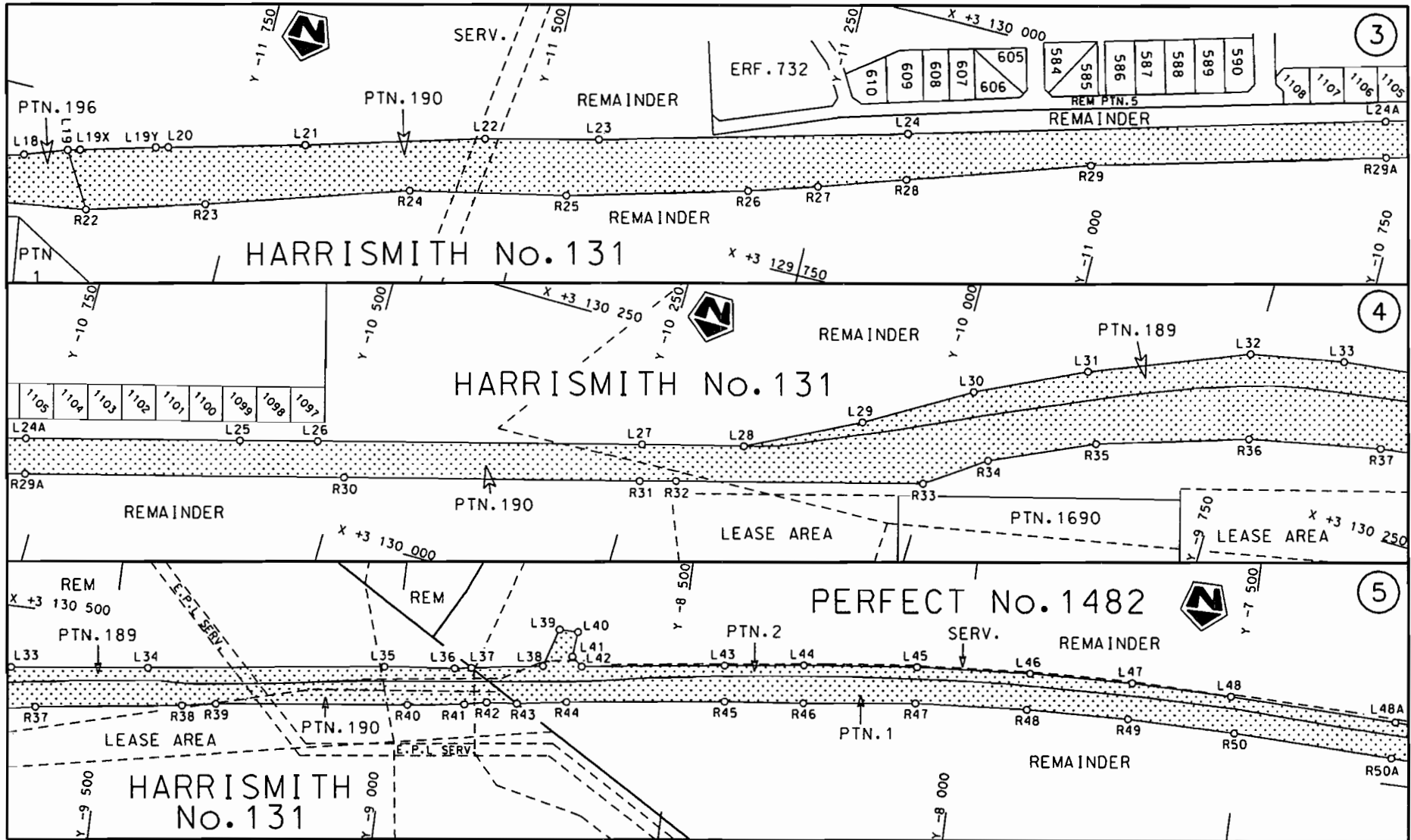
**(Nasionale Pad N5 Seksie 1: Harrismith – Kestell)**



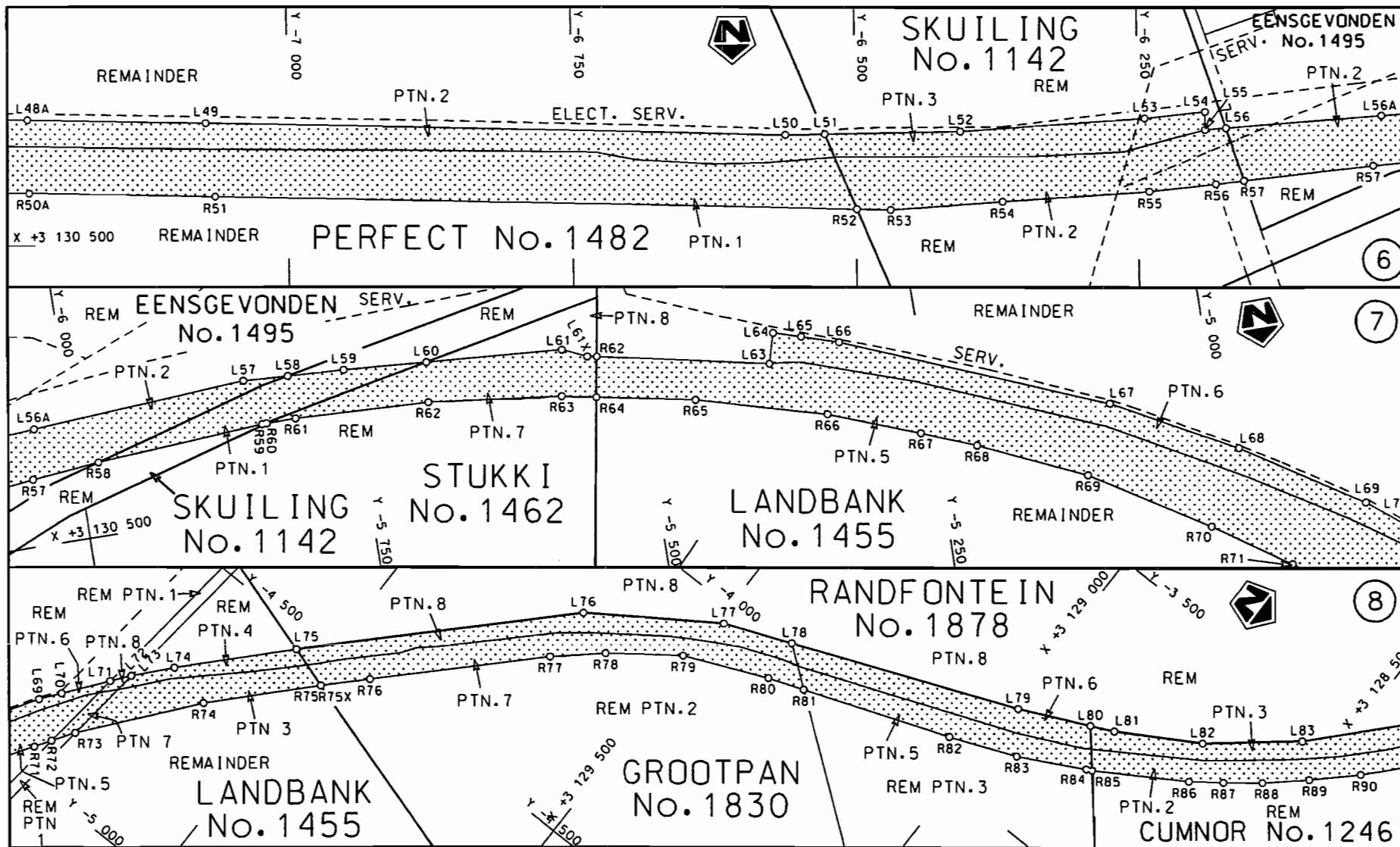
**MINISTER VAN VERVOER**

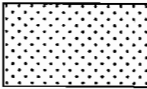


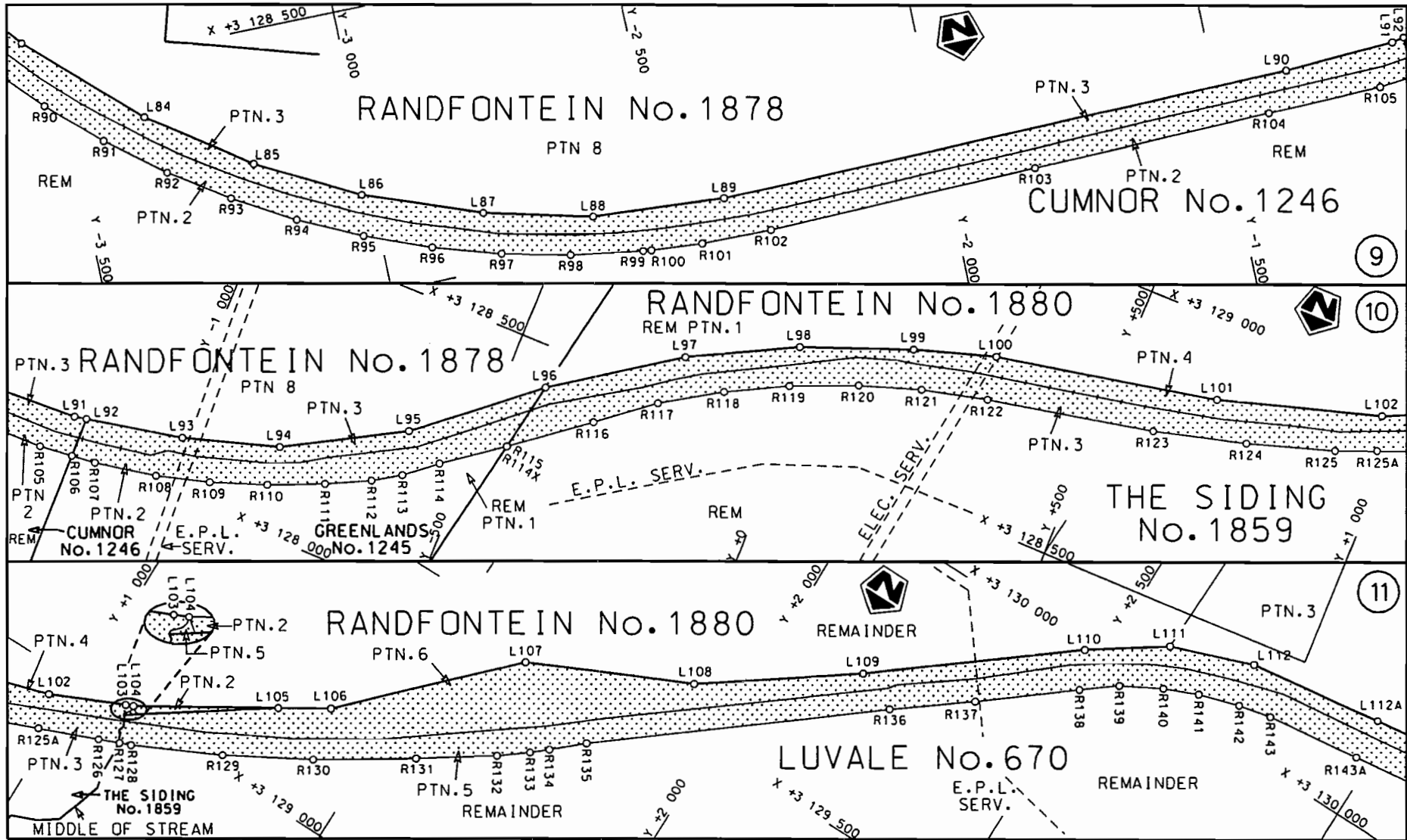
<p>Die Suid Afrikaanse Nasionale Padagentskap Beperk The South African National Roads Agency Limited</p>	<p>Die figuur getoon The figure shown</p> 	<p>steld die padreserwe voor van 'n gedeelte represents the road reserve of a portion van Nasionale Roete N5 Seksie Section of National Route 1</p>	<p>Vel Sheet 1 van of 14 Plan P781/09</p>
--	--	---	---



<p>Die Suid Afrikaanse Nasionale Padagentskap Beperk The South African National Roads Agency Limited</p>	<p>Die figuur getoon The figure shown</p>		<p>steldie padreserwe voor van 'n gedeelte represents the road reserve of a portion van Nasionale Roete N5 Seksie of National Route N5 Section 1</p>	<p>Vel Sheet 2 van 14 of 14</p>
				<p>Plan P781/09</p>

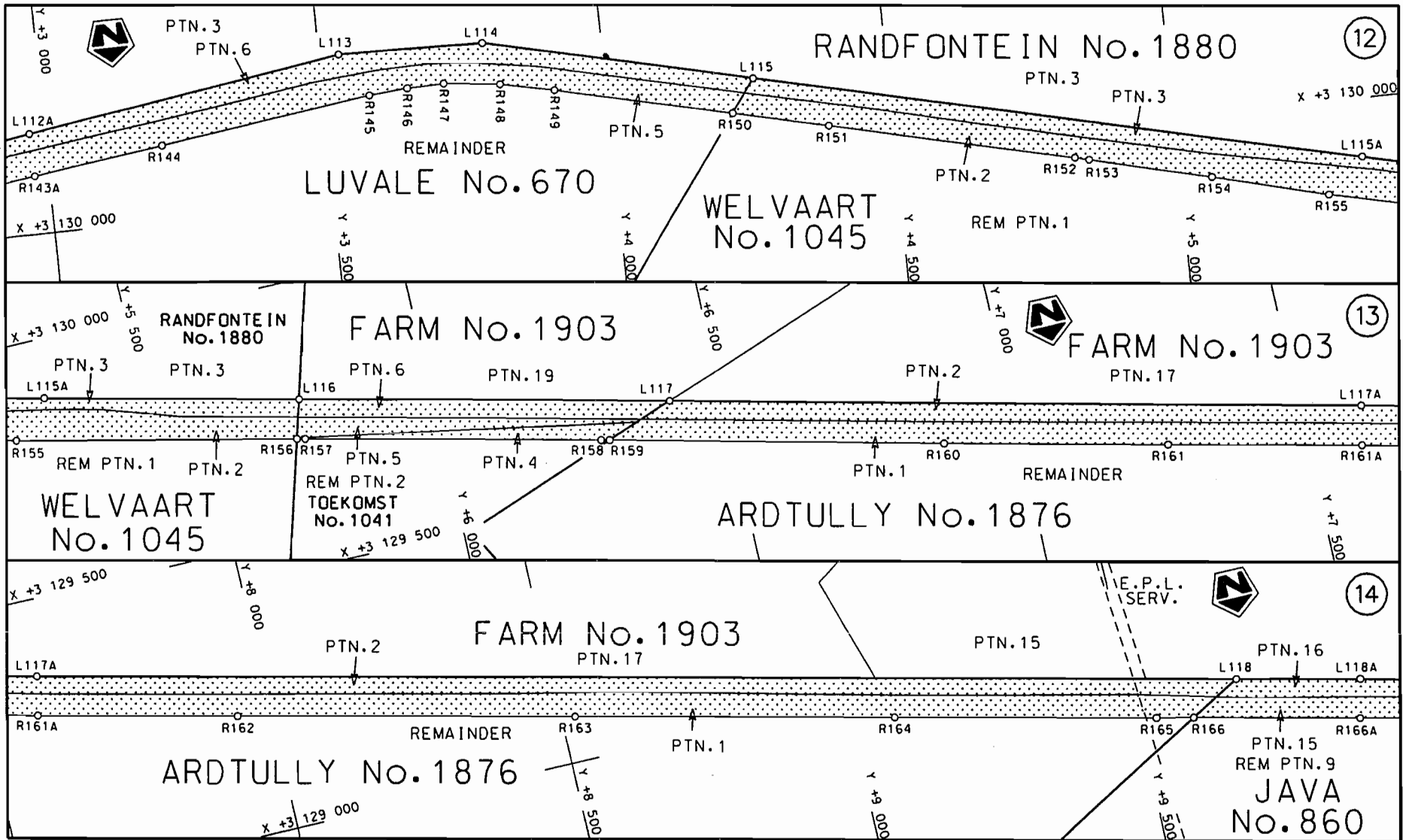


Die Suid Afrikaanse Nasionale Padagentskap Beperk The South African National Roads Agency Limited	Die figuur getoon The figure shown		steldie padreserwe voor van 'n gedeelte represents the road reserve of a portion van Nasionale Roete N5 Seksie Section of National Route 1	Vel Sheet 3 van of 14
				Plan P781/09



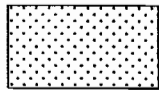
<p>Die Suid Afrikaanse Nasionale Padagentskap Beperk The South African National Roads Agency Limited</p>	<p>Die figuur getoon The figure shown</p>	<p>steldie podreserwe voor van 'n gedeelte represents the road reserve of a portion van Nasionale Roete N5 of National Route</p>	<p>Vel Sheet 4 van of 14</p>
<p>1</p>			<p>Seksie Section 1 Plan P781/09</p>

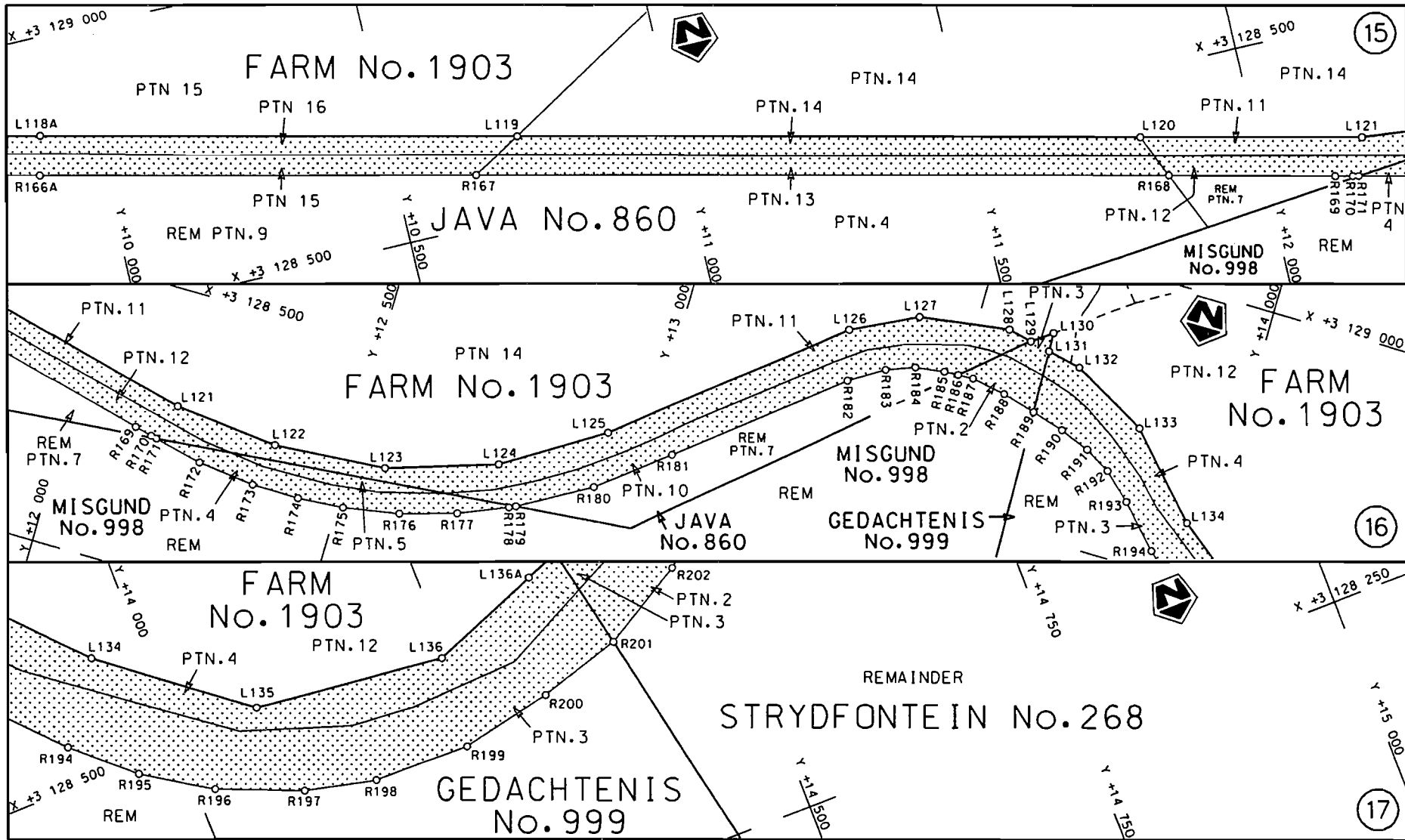




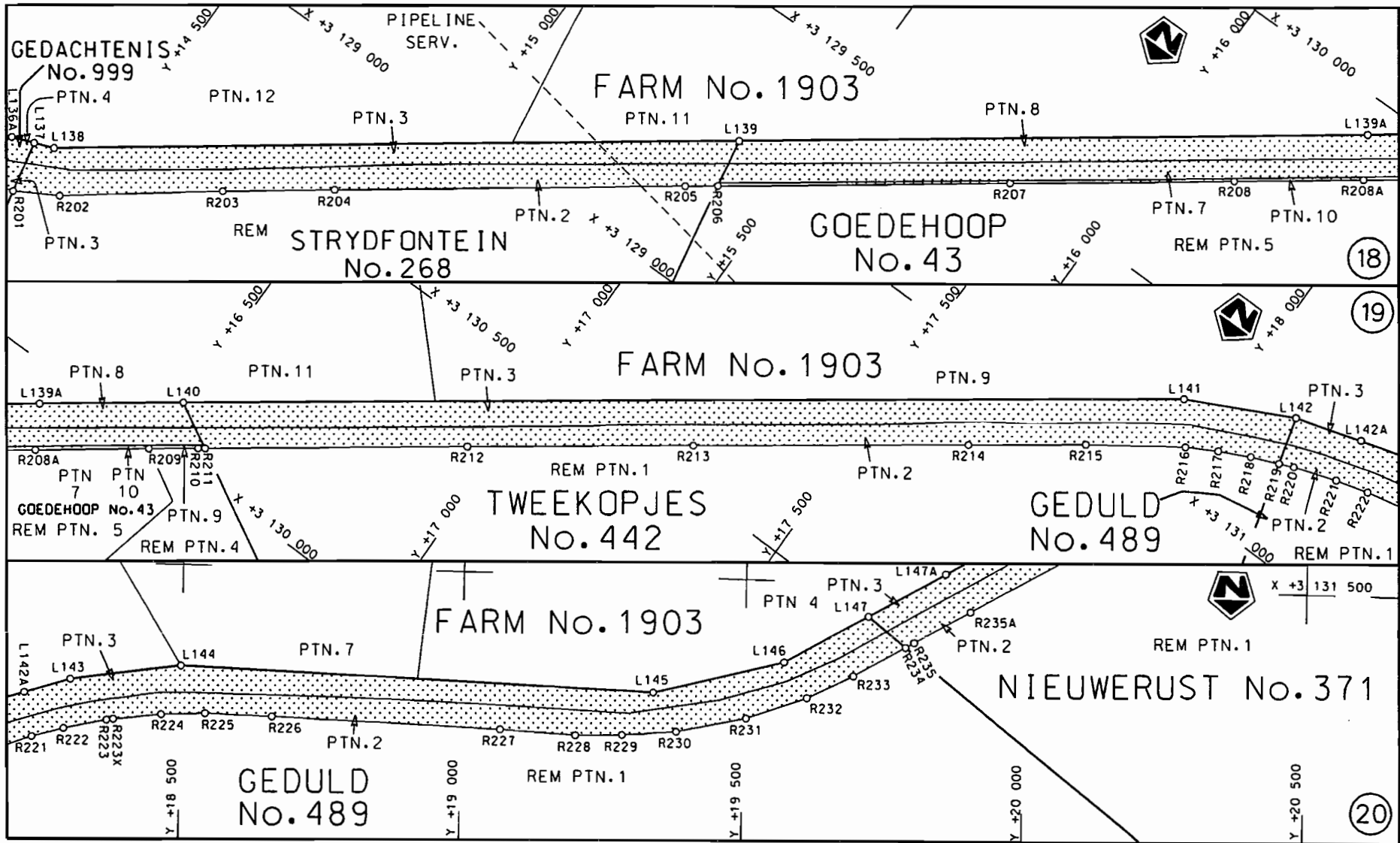
STAATSKOERANT, 19 OKTOBER 2010

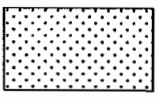
No. 33636 9

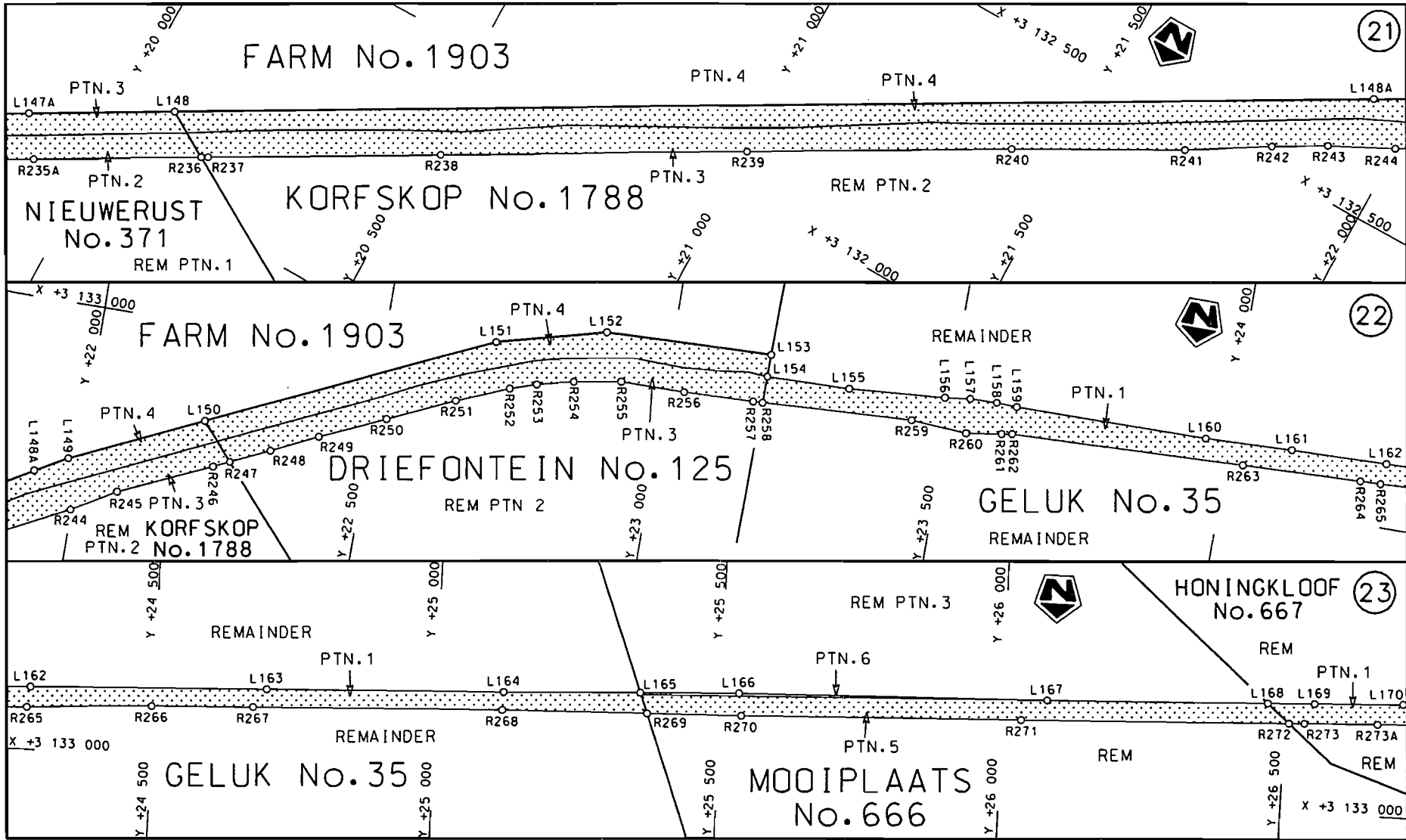
<p>Die Suid Afrikaanse Nasionale Padagentskap Beperk The South African National Roads Agency Limited</p>	<p>Die figuur getoon The figure shown</p> 	<p>steldie padreserve voor van 'n gedeelte represents the road reserve of a portion van Nasionale Roete N5 Seksie 1 of National Route N5 Section 1</p>	<p>Vel Sheet 5 van 14 Plan P781/09</p>
--	--	--	--

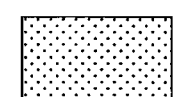


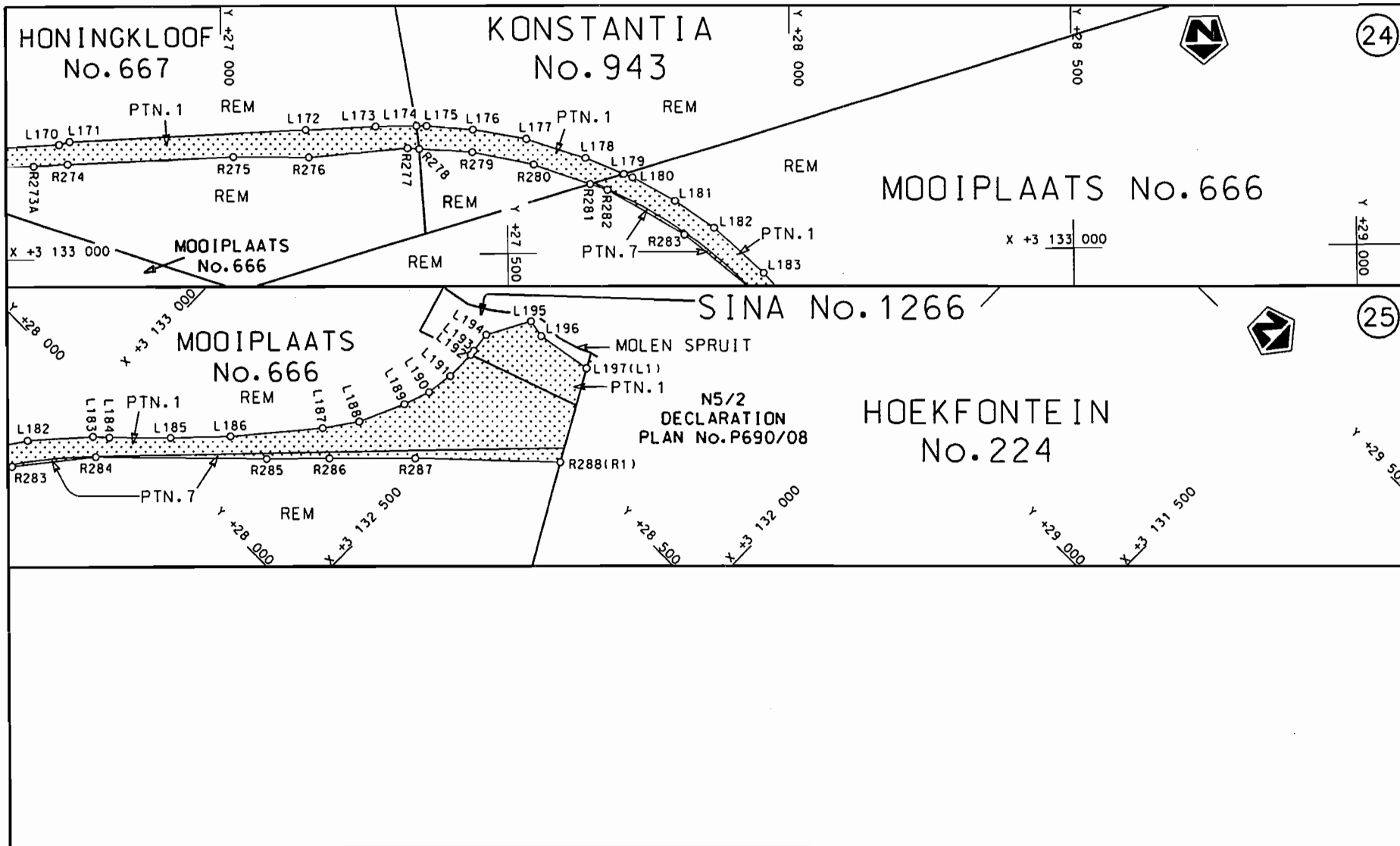
<p>Die Suid Afrikaanse Nasionale Padogentskap Beperk The South African National Roads Agency Limited</p>	<p>Die figuur getoon The figure shown</p>		<p>stel die padreserwe voor van 'n gedeelte represents the road reserve of a portion van Nasionale Roete N5 Seksie of National Route N5 Section</p>	<p>Vel Sheet 6 van 14 of</p>
			<p>1</p>	<p>Plan P781/09</p>




Die Suid Afrikaanse Nasionale Padogentskap Beperk The South African National Roads Agency Limited	Die figuur getoon The figure shown		steldie padreserwe voor van 'n gedeelte represents the road reserve of a portion van Nasionale Roete N5 Seksie 1 of National Route N5 Section 1	Vel Sheet 7 van 14 of 14 Plan P781/09
--	---------------------------------------	--	--	--



<p>Die Suid Afrikaanse Nasionale Padagentskap Beperk The South African National Roads Agency Limited</p>	<p>Die figuur getoon The figure shown</p> 	<p>steldie padreserwe voor van 'n gedeelte represents the road reserve of a portion van Nasionale Roete N5 Seksie of National Route N5 Section 1</p>	<p>Vel Sheet 8 van 14 of of Plan P781/09</p>
--	--	--	--



<p>Die Suid Afrikaanse Nasionale Padagentskap Beperk The South African National Roads Agency Limited</p>	<p>Die figuur getoon The figure shown</p> 	<p>stel die padreserwe voor van 'n gedeelte represents the road reserve of a portion van Nasionale Roete N5 Seksie of National Route Section</p> <p style="text-align: right;">1</p>	<p>Vel Sheet 9 van of 14 Plan P781/09</p>
--	--	--	---

PADRESERWE KOÖRDINATE / ROAD RESERVE CO-ORDINATES						
LINKERKANT/LEFT HAND SIDE			REGTERKANT/RIGHT HAND SIDE			
	Y	X	WG 29°		Y	X
L1	-13 034.590	3 130	340.760	R1	-13 118.060	3 130 296.650
AL1	-13 037.120	3 130	330.510	R2	-12 969.000	3 130 093.820
AL2	-13 022.670	3 130	266.760	R2X	-12 965.600	3 130 087.300
AL3	-12 958.700	3 130	179.460	R2Y	-12 945.690	3 130 047.730
L2	-12 943.920	3 130	178.040	R3	-12 941.850	3 130 039.050
L3	-12 908.970	3 130	100.890	R4	-12 914.110	3 130 012.320
L4	-12 867.210	3 130	050.060	R5	-12 885.810	3 129 985.060
L5	-12 809.360	3 130	001.900	R6	-12 842.810	3 129 952.040
L6	-12 723.030	3 129	955.220	R6X	-12 753.120	3 129 906.900
L7	-12 629.490	3 129	912.770	R7	-12 733.760	3 129 897.140
L8	-12 606.220	3 129	936.840	R8	-12 678.640	3 129 858.060
L9	-12 587.660	3 129	901.100	R9	-12 654.740	3 129 844.370
L10	-12 468.650	3 129	825.740	R10	-12 600.710	3 129 813.440
L11	-12 356.840	3 129	756.250	R11	-12 590.040	3 129 807.290
L12	-12 294.180	3 129	698.430	R12	-12 558.500	3 129 789.150
L13	-12 235.690	3 129	683.600	R13	-12 495.790	3 129 753.270
L14	-12 143.640	3 129	666.420	R14	-12 378.120	3 129 692.420
L15	-12 127.510	3 129	665.220	R15	-12 279.650	3 129 655.800
L16	-12 080.940	3 129	664.840	R16	-12 262.810	3 129 650.480
L17	-11 991.010	3 129	676.100	R17	-12 231.520	3 129 640.460
L18	-11 936.100	3 129	695.160	R18	-12 125.410	3 129 628.740
L19	-11 902.800	3 129	704.280	R19	-12 060.780	3 129 630.220
L20	-11 817.040	3 129	727.770	R20	-12 007.530	3 129 636.690
L21	-11 699.300	3 129	758.330	R21	-11 978.280	3 129 641.250
L22	-11 546.100	3 129	801.420	R22	-11 874.990	3 129 657.350
L23	-11 448.700	3 129	824.490	R23	-11 772.900	3 129 687.090
L24	-11 184.320	3 129	894.670	R24	-11 600.000	3 129 741.290
L25	-10 592.720	3 130	056.320	R25	-11 464.700	3 129 769.910
L26	-10 526.730	3 130	074.500	R26	-11 310.000	3 129 812.180
L27	-10 251.090	3 130	150.450	R27	-11 250.800	3 129 830.660
L28	-10 163.760	3 130	174.120	R28	-11 176.200	3 129 855.250
L29	-10 068.620	3 130	223.210	R29	-11 020.300	3 129 906.670
L30	-9 980.870	3 130	276.080	R30	-10 495.500	3 130 050.060
L31	-9 888.330	3 130	321.380	R31	-10 244.130	3 130 118.630
L32	-9 753.800	3 130	375.890	R32	-10 213.090	3 130 127.570
L33	-9 672.310	3 130	392.080	R33	-10 002.210	3 130 185.910
L34	-9 432.510	3 130	421.190	R34	-9 951.830	3 130 221.630
L35	-9 016.000	3 130	476.660	R35	-9 864.180	3 130 262.310
L36	-8 893.370	3 130	489.400	R36	-9 734.820	3 130 303.840
L37	-8 863.630	3 130	494.050	R37	-9 620.620	3 130 327.660
L38	-8 738.870	3 130	513.560	R38	-9 363.670	3 130 362.840
L39	-8 718.040	3 130	581.210	R39	-9 304.130	3 130 373.740
L40	-8 685.560	3 130	581.090	R40	-8 967.590	3 130 414.940
L41	-8 689.870	3 130	536.750	R41	-8 868.220	3 130 428.710
L42	-8 671.600	3 130	521.460	R42	-8 829.380	3 130 437.250
L43	-8 422.320	3 130	555.720	R43	-8 776.070	3 130 441.750
L44	-8 282.840	3 130	574.420	R44	-8 690.090	3 130 455.930
L45	-8 083.350	3 130	596.840	R45	-8 414.160	3 130 492.630
L46	-7 881.970	3 130	611.740	R46	-8 275.340	3 130 508.110
L47	-7 701.150	3 130	618.320	R47	-8 077.920	3 130 533.220
L48	-7 524.360	3 130	617.610	R48	-7 879.780	3 130 547.970

Vel 10  
Sheet of

Van 14  
of

P781/09

PADRESERWE KOÖRDINATE / ROAD RESERVE CO-ORDINATES									
LINKERKANT/LEFT HAND SIDE					REGTERKANT/RIGHT HAND SIDE				
	Y		X	WG 29°				X	
L49	-7 072.870	3	130	605.370	R49	-7 700.830	3	130	554.440
L50	-6 561.950	3	130	590.340	R50	-7 510.410	3	130	553.950
L51	-6 527.020	3	130	590.730	R51	-7 064.990	3	130	541.320
L52	-6 407.050	3	130	592.050	R52	-6 499.170	3	130	524.760
L53	-6 243.660	3	130	601.720	R53	-6 469.300	3	130	523.880
L54	-6 190.150	3	130	607.160	R54	-6 369.990	3	130	530.000
L55	-6 190.320	3	130	591.450	R55	-6 240.040	3	130	537.810
L56	-6 171.940	3	130	592.670	R56	-6 181.270	3	130	543.890
L57	-5 843.940	3	130	614.430	R57	-6 156.230	3	130	546.610
L58	-5 804.410	3	130	612.500	R58	-5 982.290	3	130	564.250
L59	-5 754.550	3	130	610.070	R59	-5 833.560	3	130	574.430
L60	-5 682.400	3	130	605.390	R60	-5 829.440	3	130	574.470
L61	-5 562.500	3	130	597.610	R61	-5 803.560	3	130	574.710
L61X	-5 541.360	3	130	588.330	R62	-5 686.260	3	130	570.480
L62	-5 533.470	3	130	586.770	R63	-5 569.000	3	130	557.410
L63	-5 383.900	3	130	557.090	R64	-5 539.310	3	130	551.870
L64	-5 376.340	3	130	583.320	R65	-5 453.840	3	130	535.920
L65	-5 352.470	3	130	576.130	R66	-5 340.130	3	130	505.400
L66	-5 319.960	3	130	566.050	R67	-5 261.090	3	130	476.460
L67	-5 091.600	3	130	476.010	R68	-5 213.750	3	130	458.080
L68	-4 985.120	3	130	419.970	R69	-5 120.500	3	130	417.370
L69	-4 881.490	3	130	355.400	R70	-5 020.030	3	130	356.250
L70	-4 848.760	3	130	330.090	R71	-4 951.560	3	130	310.790
L71	-4 779.120	3	130	275.930	R72	-4 924.770	3	130	292.990
L72	-4 748.880	3	130	252.410	R73	-4 888.080	3	130	268.590
L73	-4 748.600	3	130	252.190	R74	-4 706.520	3	130	122.760
L74	-4 690.440	3	130	201.440	R75	-4 553.180	3	129	977.830
L75	-4 530.670	3	130	051.190	R75X	-4 552.910	3	129	977.580
L76	-4 166.890	3	129	695.130	R76	-4 491.180	3	129	917.110
L77	-4 028.760	3	129	490.690	R77	-4 263.620	3	129	693.340
L78	-3 980.460	3	129	374.250	R78	-4 198.680	3	129	620.980
L79	-3 820.990	3	128	989.670	R79	-4 117.500	3	129	511.460
L80	-3 764.890	3	128	870.750	R80	-4 053.840	3	129	369.060
L81	-3 746.670	3	128	832.260	R81	-4 030.800	3	129	307.850
L82	-3 666.180	3	128	697.020	R82	-3 935.540	3	129	054.840
L83	-3 553.480	3	128	560.240	R83	-3 887.790	3	128	940.240
L84	-3 366.740	3	128	388.930	R84	-3 825.370	3	128	821.170
L85	-3 194.370	3	128	269.160	R85	-3 824.700	3	128	820.100
L86	-3 017.770	3	128	176.360	R86	-3 733.870	3	128	674.960
L87	-2 815.270	3	128	101.460	R87	-3 697.870	3	128	626.180
L88	-2 625.970	3	128	054.450	R88	-3 655.000	3	128	570.900
L89	-2 394.070	3	128	039.050	R89	-3 599.280	3	128	509.010
L90	-1 371.970	3	128	054.540	R90	-3 535.650	3	128	443.470
L91	-1 176.830	3	128	063.850	R91	-3 445.460	3	128	362.200
L92	-1 155.650	3	128	068.210	R92	-3 347.510	3	128	285.780
L93	- 986.310	3	128	102.320	R93	-3 245.950	3	128	217.720
L94	- 820.810	3	128	153.120	R94	-3 139.590	3	128	157.300
L95	- 619.310	3	128	267.210	R95	-3 029.270	3	128	104.630
L96	- 426.920	3	128	430.230	R96	-2 914.970	3	128	060.110
L97	- 219.610	3	128	574.010	R97	-2 798.770	3	128	024.340
L98	-39.810	3	128	668.410	R98	-2 678.920	3	127	996.880

Vel	11	Van	14	P781/09
Sheet		of		

PADRESERWE KOÖRDINATE / ROAD RESERVE CO-ORDINATES										
LINKERKANT/LEFT HAND SIDE					REGTERKANT/RIGHT HAND SIDE					
	Y		X	WG 29°				X		
L99	149.390	3	128	742.500	R99	-2	552.500	3	127	977.130
L100	289.290	3	128	787.300	R100	-2	538.260	3	127	975.410
L101	678.790	3	128	867.700	R101	-2	448.300	3	127	968.610
L102	960.990	3	128	953.900	R102	-2	324.260	3	127	967.490
L103	1 086.150	3	129	010.790	R103	-1	842.400	3	127	978.440
L104	1 098.690	3	129	016.490	R104	-1	417.170	3	127	987.850
L105	1 316.210	3	129	150.680	R105	-1	213.540	3	127	992.200
L106	1 396.290	3	129	200.090	R106	-1	154.620	3	127	998.190
L107	1 642.290	3	129	452.190	R107	-1	111.780	3	128	002.550
L108	1 914.090	3	129	579.790	R108	-1	003.670	3	128	022.390
L109	2 157.200	3	129	756.880	R109	-	911.410	3	128	048.280
L110	2 466.500	3	130	004.070	R110	-	815.650	3	128	083.080
L111	2 590.600	3	130	090.370	R111	-	721.320	3	128	123.840
L112	2 733.400	3	130	142.570	R112	-	647.120	3	128	160.740
L113	3 535.800	3	130	260.070	R113	-	600.080	3	128	190.860
L114	3 788.900	3	130	254.260	R114	-	548.100	3	128	234.680
L115	4 260.280	3	130	144.460	R114X	-	451.170	3	128	307.600
L116	5 768.510	3	129	793.140	R115	-	450.620	3	128	308.030
L117	6 408.980	3	129	643.950	R116	-	325.310	3	128	406.080
L118	9 686.940	3	128	880.420	R117	-	233.290	3	128	480.440
L119	10 724.290	3	128	638.780	R118	-	133.850	3	128	543.830
L120	11 799.240	3	128	388.380	R119	-	30.990	3	128	598.140
L121	12 182.220	3	128	299.170	R120		83.440	3	128	646.820
L122	12 364.820	3	128	281.160	R121		189.150	3	128	682.480
L123	12 564.820	3	128	296.960	R122		303.290	3	128	711.230
L124	12 755.120	3	128	359.460	R123		596.590	3	128	773.490
L125	12 924.520	3	128	466.460	R124		756.940	3	128	816.300
L126	13 284.520	3	128	759.750	R125		907.830	3	128	865.110
L127	13 398.920	3	128	816.850	R126	1	077.760	3	128	934.300
L128	13 558.120	3	128	840.250	R127	1	112.490	3	128	948.440
L129	13 600.200	3	128	831.370	R128	1	131.670	3	128	956.250
L130	13 634.410	3	128	856.410	R129	1	277.540	3	129	028.110
L131	13 635.490	3	128	823.920	R130	1	417.440	3	129	107.370
L132	13 695.020	3	128	811.350	R131	1	570.250	3	129	206.440
L133	13 826.820	3	128	738.350	R132	1	687.120	3	129	286.600
L134	13 955.520	3	128	601.540	R133	1	733.750	3	129	322.990
L135	14 075.920	3	128	507.640	R134	1	760.360	3	129	345.700
L136	14 245.120	3	128	488.940	R135	1	809.840	3	129	390.170
L137	14 371.460	3	128	539.320	R136	2	229.980	3	129	729.270
L138	14 405.530	3	128	552.920	R137	2	350.430	3	129	822.360
L139	15 386.800	3	129	274.600	R138	2	496.180	3	129	939.570
L140	16 497.260	3	130	091.320	R139	2	551.800	3	129	983.410
L141	17 931.660	3	131	146.290	R140	2	620.540	3	130	021.320
L142	18 112.490	3	131	237.060	R141	2	678.430	3	130	046.280
L143	18 301.430	3	131	293.580	R142	2	749.140	3	130	068.070
L144	18 499.140	3	131	322.010	R143	2	806.480	3	130	080.630
L145	19 337.760	3	131	296.460	R144	3	205.260	3	130	133.360
L146	19 569.990	3	131	356.310	R145	3	582.090	3	130	182.640
L147	19 718.120	3	131	440.680	R146	3	649.520	3	130	188.110
L148	20 079.600	3	131	646.540	R147	3	714.270	3	130	189.900
L149	21 979.780	3	132	728.680	R148	3	812.500	3	130	178.600

Vel	12	Van	14	P781/09
Sheet		of		



PADRESERWE KOÖRDINATE / ROAD RESERVE CO-ORDINATES											
LINKERKANT/LEFT HAND SIDE					REGTERKANT/RIGHT HAND SIDE						
	Y		X	WG 29°				X			
L150	22	207.600	3	132	833.410	R149	3	907.970	3	130	158.440
L151	22	693.270	3	133	056.570	R150	4	217.700	3	130	086.180
L152	22	882.660	3	133	106.010	R151	4	385.780	3	130	046.970
L153	23	174.900	3	133	115.640	R152	4	816.950	3	129	947.210
L154	23	174.170	3	133	077.070	R153	4	841.830	3	129	941.050
L155	23	321.140	3	133	080.720	R154	5	056.840	3	129	888.150
L156	23	490.200	3	133	094.010	R155	5	261.020	3	129	835.560
L157	23	534.250	3	133	099.750	R156	5	749.230	3	129	726.460
L158	23	582.490	3	133	100.930	R157	5	757.890	3	129	724.530
L159	23	618.970	3	133	099.730	R158	6	285.320	3	129	601.760
L160	23	957.790	3	133	101.880	R159	6	289.790	3	129	600.710
L161	24	112.170	3	133	107.570	R160	6	868.660	3	129	464.920
L162	24	280.970	3	133	111.730	R161	7	258.340	3	129	374.630
L163	24	700.160	3	133	127.140	R162	7	940.480	3	129	216.270
L164	25	118.500	3	133	142.430	R163	8	524.710	3	129	080.090
L165	25	358.190	3	133	153.450	R164	9	078.170	3	128	951.200
L166	25	532.090	3	133	161.440	R165	9	533.260	3	128	845.480
L167	26	079.240	3	133	177.290	R166	9	597.850	3	128	831.310
L168	26	469.780	3	133	191.300	R167	10	639.140	3	128	589.270
L169	26	553.090	3	133	194.290	R168	11	834.140	3	128	311.520
L170	26	711.740	3	133	200.850	R169	12	120.570	3	128	243.580
L171	26	730.580	3	133	205.510	R170	12	151.050	3	128	236.560
L172	27	148.540	3	133	221.330	R171	12	161.360	3	128	234.200
L173	27	272.170	3	133	225.660	R172	12	246.290	3	128	214.730
L174	27	342.920	3	133	225.800	R173	12	347.200	3	128	203.070
L175	27	360.660	3	133	225.830	R174	12	429.890	3	128	201.870
L176	27	441.410	3	133	218.250	R175	12	511.430	3	128	208.020
L177	27	535.110	3	133	201.440	R176	12	612.240	3	128	226.080
L178	27	639.060	3	133	167.060	R177	12	709.850	3	128	255.150
L179	27	705.630	3	133	137.720	R178	12	803.230	3	128	294.740
L180	27	720.740	3	133	131.070	R179	12	804.870	3	128	295.700
L181	27	794.980	3	133	089.030	R180	12	927.270	3	128	367.090
L182	27	862.610	3	133	041.230	R181	13	045.030	3	128	461.230
L183	27	949.080	3	132	962.220	R182	13	306.420	3	128	673.060
L184	27	968.480	3	132	940.530	R183	13	365.980	3	128	710.900
L185	28	043.350	3	132	862.550	R184	13	416.130	3	128	730.150
L186	28	118.780	3	132	788.470	R185	13	467.740	3	128	737.150
L187	28	243.980	3	132	680.740	R186	13	492.480	3	128	738.260
L188	28	296.940	3	132	642.540	R187	13	519.750	3	128	739.480
L189	28	373.170	3	132	607.080	R188	13	580.540	3	128	728.940
L190	28	418.240	3	132	591.090	R189	13	639.100	3	128	712.610
L191	28	464.380	3	132	584.070	R190	13	695.880	3	128	696.780
L192	28	515.620	3	132	584.210	R191	13	748.360	3	128	676.670
L193	28	517.570	3	132	584.220	R192	13	793.110	3	128	650.430
L194	28	559.970	3	132	589.210	R193	13	840.670	3	128	606.630
L195	28	632.330	3	132	549.340	R194	13	907.710	3	128	535.820
L196	28	626.150	3	132	517.920	R195	13	958.110	3	128	490.910
L197	28	641.760	3	132	421.830	R196	14	015.940	3	128	454.010
						R197	14	088.610	3	128	424.300
						R198	14	151.710	3	128	409.840
						R199	14	237.430	3	128	408.340
						Vel	13	Van	14	P781/09	
						Sheet		of			

PADRESERWE KOÖRDINATE / ROAD RESERVE CO-ORDINATES											
REGTERKANT/RIGHT HAND SIDE					REGTERKANT/RIGHT HAND SIDE						
					WG 29°		X				
R200	14	318.170	3	128	425.640	R250	22	525.370	3	132	890.500
R201	14	390.700	3	128	447.820	R251	22	639.870	3	132	942.990
R202	14	463.430	3	128	489.610	R252	22	730.480	3	132	980.230
R203	14	695.560	3	128	666.530	R253	22	776.590	3	132	995.220
R204	14	856.700	3	128	785.020	R254	22	839.680	3	133	010.980
R205	15	356.160	3	129	152.510	R255	22	921.270	3	133	024.710
R206	15	402.960	3	129	186.950	R256	23	033.290	3	133	025.290
R207	15	823.290	3	129	496.300	R257	23	156.380	3	133	029.640
R208	16	145.410	3	129	733.460	R258	23	173.280	3	133	030.570
R209	16	493.880	3	129	989.260	R259	23	438.780	3	133	045.090
R210	16	574.900	3	130	048.730	R260	23	536.770	3	133	038.910
R211	16	575.370	3	130	049.080	R261	23	599.880	3	133	048.300
R212	16	950.810	3	130	326.140	R262	23	618.490	3	133	051.500
R213	17	272.940	3	130	563.200	R263	24	030.660	3	133	066.800
R214	17	668.280	3	130	854.000	R264	24	240.890	3	133	074.340
R215	17	836.660	3	130	978.030	R265	24	276.220	3	133	075.650
R216	17	983.210	3	131	079.370	R266	24	497.280	3	133	087.670
R217	18	034.650	3	131	108.310	R267	24	677.720	3	133	094.310
R218	18	087.450	3	131	134.350	R268	25	117.510	3	133	110.410
R219	18	135.120	3	131	154.470	R269	25	371.550	3	133	117.200
R220	18	159.910	3	131	164.930	R270	25	537.700	3	133	121.640
R221	18	234.280	3	131	190.330	R271	26	034.330	3	133	139.860
R222	18	291.080	3	131	205.950	R272	26	509.120	3	133	157.320
R223	18	367.700	3	131	222.360	R273	26	536.290	3	133	158.320
R223X	18	372.970	3	131	223.220	R274	26	726.470	3	133	166.060
R224	18	465.350	3	131	234.760	R275	27	019.320	3	133	175.870
R225	18	543.900	3	131	238.770	R276	27	153.670	3	133	173.390
R226	18	663.060	3	131	236.460	R277	27	327.200	3	133	187.540
R227	19	068.600	3	131	223.900	R278	27	347.600	3	133	186.090
R228	19	202.060	3	131	217.390	R279	27	439.840	3	133	179.520
R229	19	284.130	3	131	219.710	R280	27	547.590	3	133	156.160
R230	19	380.180	3	131	228.490	R281	27	646.820	3	133	120.610
R231	19	504.430	3	131	255.900	R282	27	676.820	3	133	109.860
R232	19	611.570	3	131	294.760	R283	27	810.600	3	133	029.730
R233	19	693.510	3	131	335.560	R284	27	926.950	3	132	933.800
R234	19	785.830	3	131	387.930	R285	28	135.220	3	132	714.880
R235	19	801.160	3	131	396.620	R286	28	214.270	3	132	634.810
R236	20	159.120	3	131	600.250	R287	28	318.300	3	132	527.410
R237	20	159.710	3	131	600.580	R288	28	491.700	3	132	340.450
R238	20	528.020	3	131	810.350						
R239	20	996.700	3	132	077.160						
R240	21	404.660	3	132	309.530						
R241	21	673.330	3	132	457.190						
R242	21	805.420	3	132	537.620						
R243	21	892.120	3	132	586.840						
R244	21	998.360	3	132	640.320						
R245	22	074.710	3	132	685.230						
R246	22	235.550	3	132	757.160						
R247	22	263.530	3	132	770.120						
R248	22	331.260	3	132	801.480						
R249	22	411.040	3	132	839.710						