

# Government Gazette Staatskoerant

REPUBLIC OF SOUTH AFRICA  
REPUBLIEK VAN SUID-AFRIKA

Vol. 544

Pretoria, 19 October 2010  
Oktober

**No. 33638**

**IMPORTANT NOTICE**

The Government Printing Works will not be held responsible for faxed documents not received due to errors on the fax machine or faxes received which are unclear or incomplete. Please be advised that an "OK" slip, received from a fax machine, will not be accepted as proof that documents were received by the GPW for printing. If documents are faxed to the GPW it will be the sender's responsibility to phone and confirm that the documents were received in good order.

Furthermore the Government Printing Works will also not be held responsible for cancellations and amendments which have not been done on original documents received from clients.

**CONTENTS****INHOUD**

<i>No.</i>	<i>Page No.</i>	<i>Gazette No.</i>	<i>No.</i>	<i>Bladsy No.</i>	<i>Koerant No.</i>
<b>GOVERNMENT NOTICE</b>			<b>GOEWERMENSKENNISGEWING</b>		
<b>Transport, Department of</b>			<b>Vervoer, Departement van</b>		
<i>Government Notice</i>			<i>Goewermentskennisgewing</i>		
912			912		
South African National Roads Agency Limited and the National Roads Act (7/1998): The South African National Roads Agency Limited: Declaration amendment of National Road N8 Section 7: Amendment of Declaration No. 284 of 2006 .....	3	33638	Suid-Afrikaanse Nasionale Padagentskap Beperk en die Nasionale Paaie Wet (7/1998): Die Suid-Afrikaanse Nasionale Padagentskap Beperk: Verklaring wysiging van Nasionale Pad N8 Seksie 7: Wysiging van Verklaring No. 284 van 2006 .....	4	33638

---

## GOVERNMENT NOTICE

---

### DEPARTMENT OF TRANSPORT

No. 912

19 October 2010

## THE SOUTH AFRICAN NATIONAL ROADS AGENCY LIMITED

Registration No: 98/09584/06

---

### DECLARATION AMENDMENT OF NATIONAL ROAD N8 SECTION 7

AMENDMENT OF DECLARATION No. 284 OF 2006

By virtue of section 40(1)(b) of the South African National Roads Agency Limited and the National Roads Act, 1998 (Act No. 7 of 1998), I hereby amend declaration No. 284 of 2006, by substituting the section of the descriptive declaration from Griquatown up to Campbell, with the subjoined sheets 1 to 11 of Plan No. P772/09. Including only the roadway and shoulders (surfaced or gravel) but excluding kerbs, channels, sidewalks and parking areas through the township of Griekwastad.

(National Road N8 Section 7: Griquatown – Campbell)



MINISTER OF TRANSPORT

---

**GOEWERMENTSKENNISGEWING**

---

**DEPARTEMENT VAN VERVOER**

No. 912

19 Oktober 2010

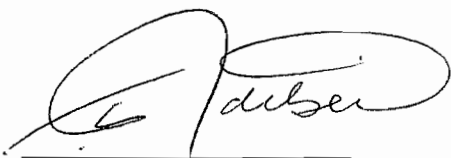
**DIE SUID-AFRIKAANSE NASIONALE  
PADAGENTSKAP BEPERK**Registrasie No: 98/09584/06

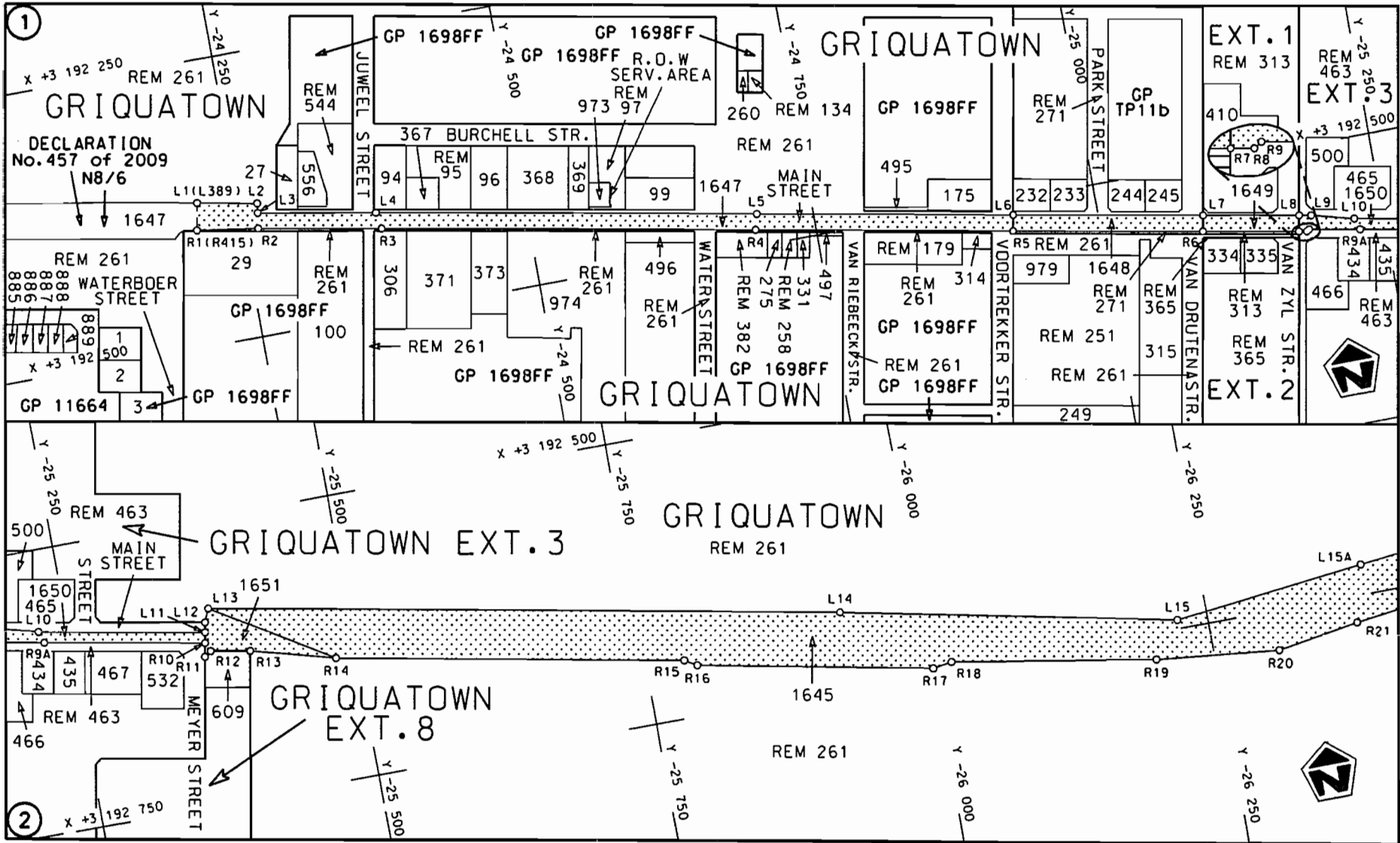
---

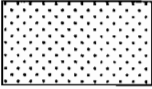
**VERKLARING WYSIGING VAN NASIONALE PAD N8 SEKSIE 7.**

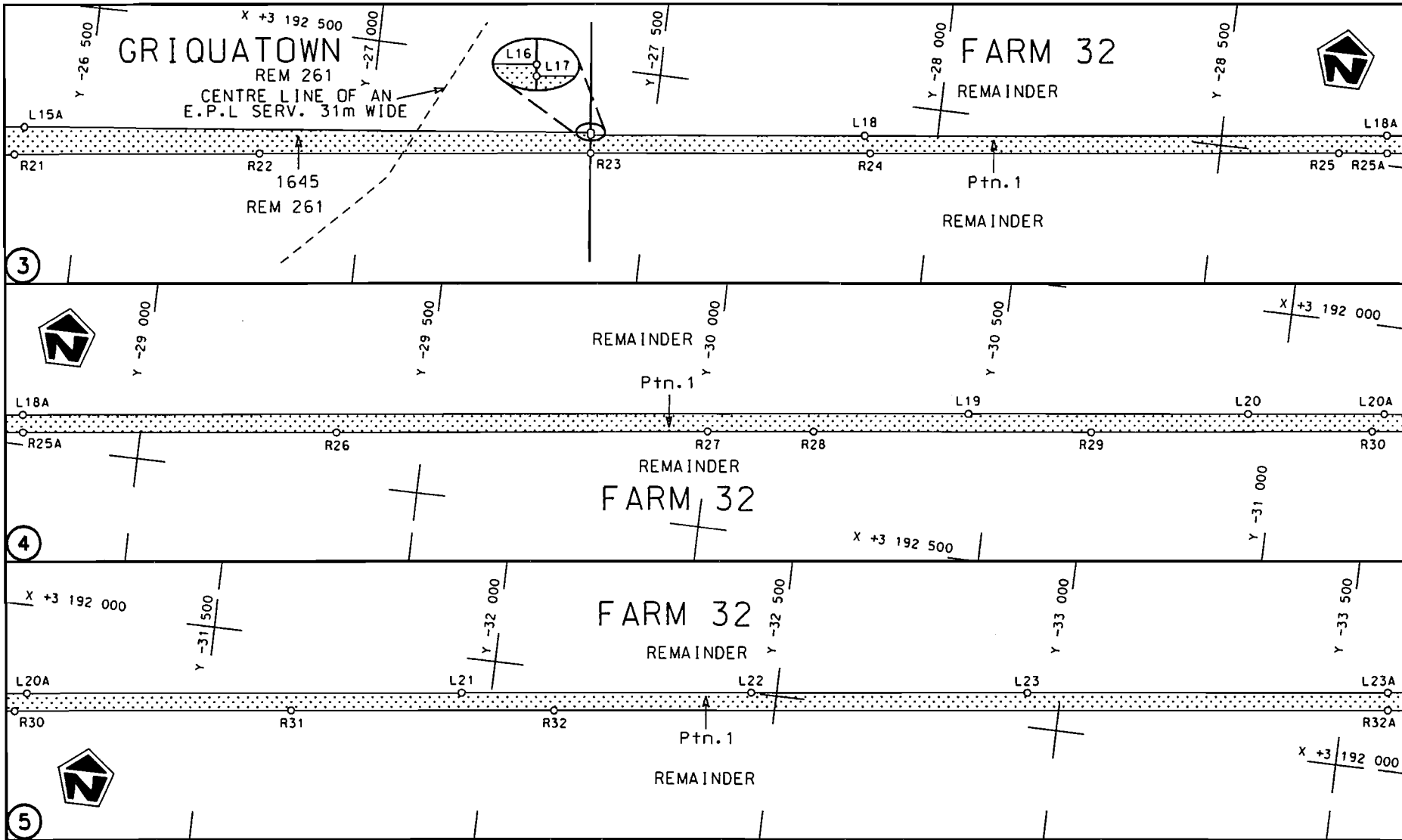
WYSIGING VAN VERKLARING NO. 284 VAN 2006

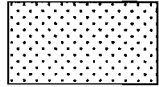
Kragtens Artikel 40(1)(b) van die Suid-Afrikaanse Nasionale Padagentskap Beperk en die Nasionale Paaie Wet, 1998 (Wet no. 7 van 1998), wysig ek hiermee verklaring no. 284 van 2006, deur die gedeelte van die beskrywende verklaring vanaf Griekwastad tot by Campbell, te vervang met meegaande velle 1 tot 11 van Plan no. P772/09. Insluitende slegs die padbaan en skouers (geplavlei of grond) maar uitsluitende randstene, kanale, sypaadjies en parker areas, deur die dorpsgebied van Griekwastad.

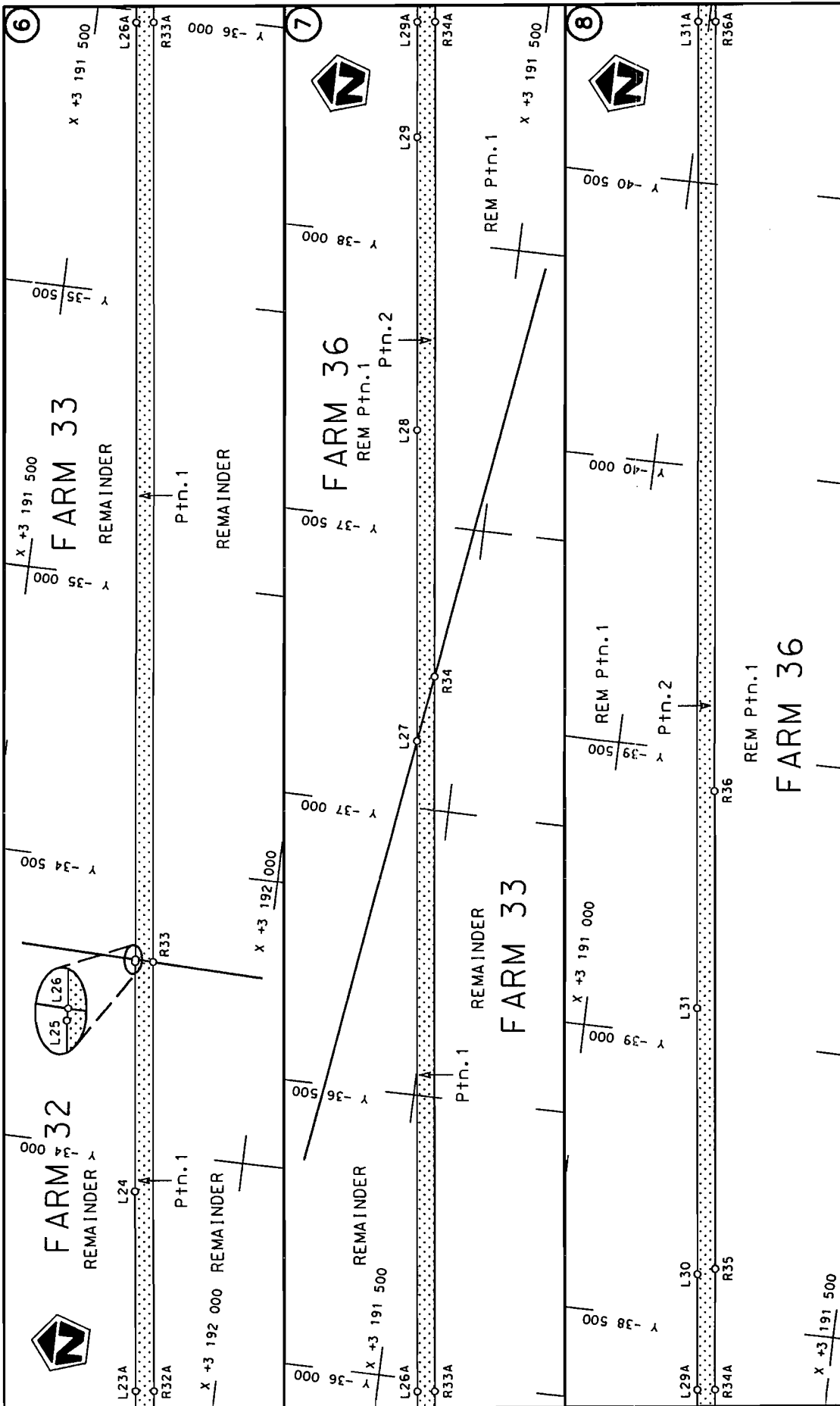
**(Nasionale Pad N8 Seksie 7: Griekwastad – Campbell)****MINISTER VAN VERVOER**



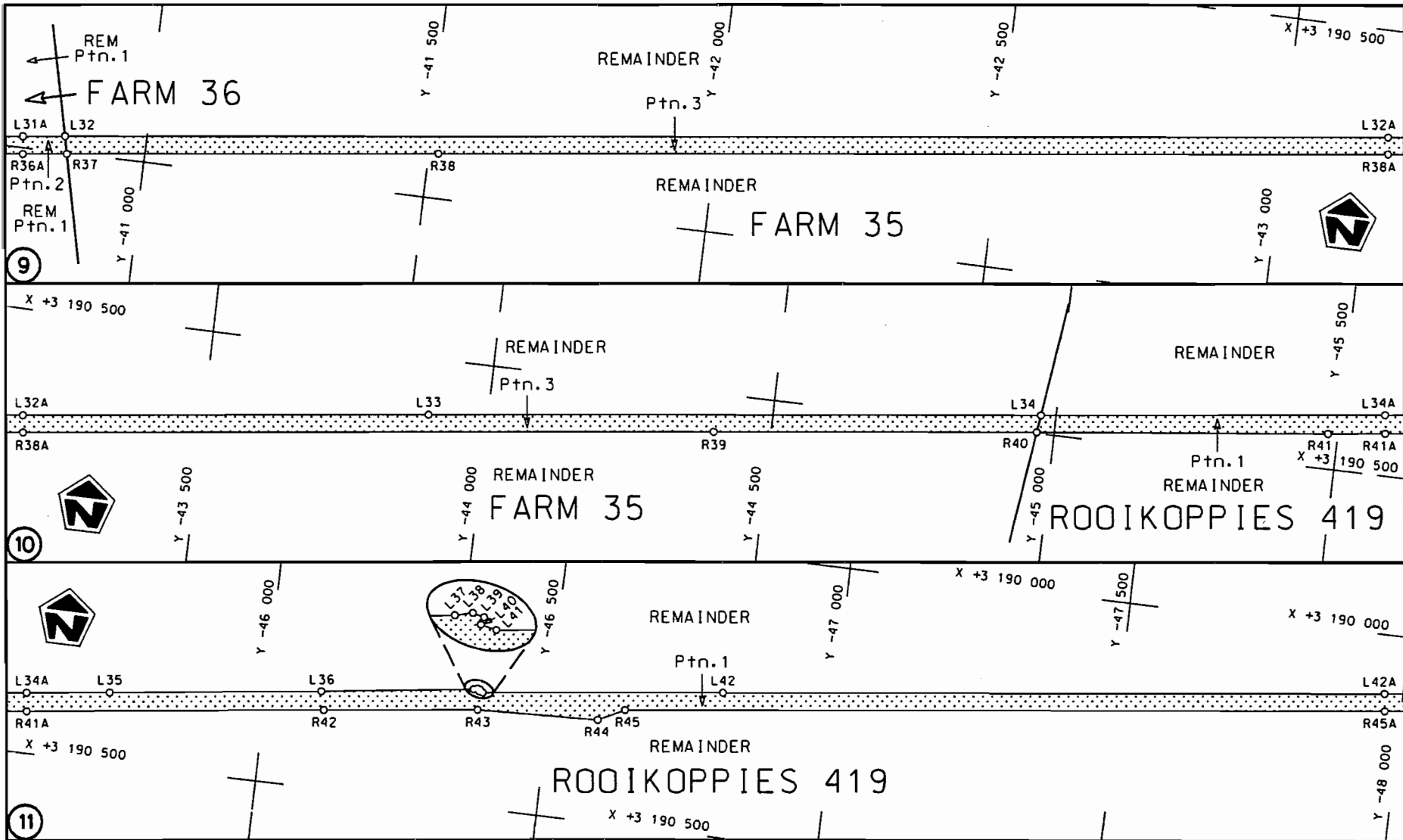
Die Suid Afrikaanse Nasionale Padagentskap Beperk The South African National Roads Agency Limited	Die figuur getoon The figure shown		steldie padreserwe voor van 'n gedeelte represents the road reserve of a portion van Nasionale Roete of National Route	N8	Seksie Section	7	Vel Sheet	1 of	11
							Plan		

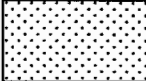


<p>Die Suid Afrikaanse Nasionale Padogentskop Beperk The South African National Roads Agency Limited</p>	<p>Die figuur getoon The figure shown</p>		<p>steldie padreserwe voor van 'n gedeelte represents the road reserve of a portion van Nasionale Roete N8 Seksie of National Route N8 Section 7</p>	<p>Vel Sheet 2 van of 11</p>
				<p>Plan P772/09</p>

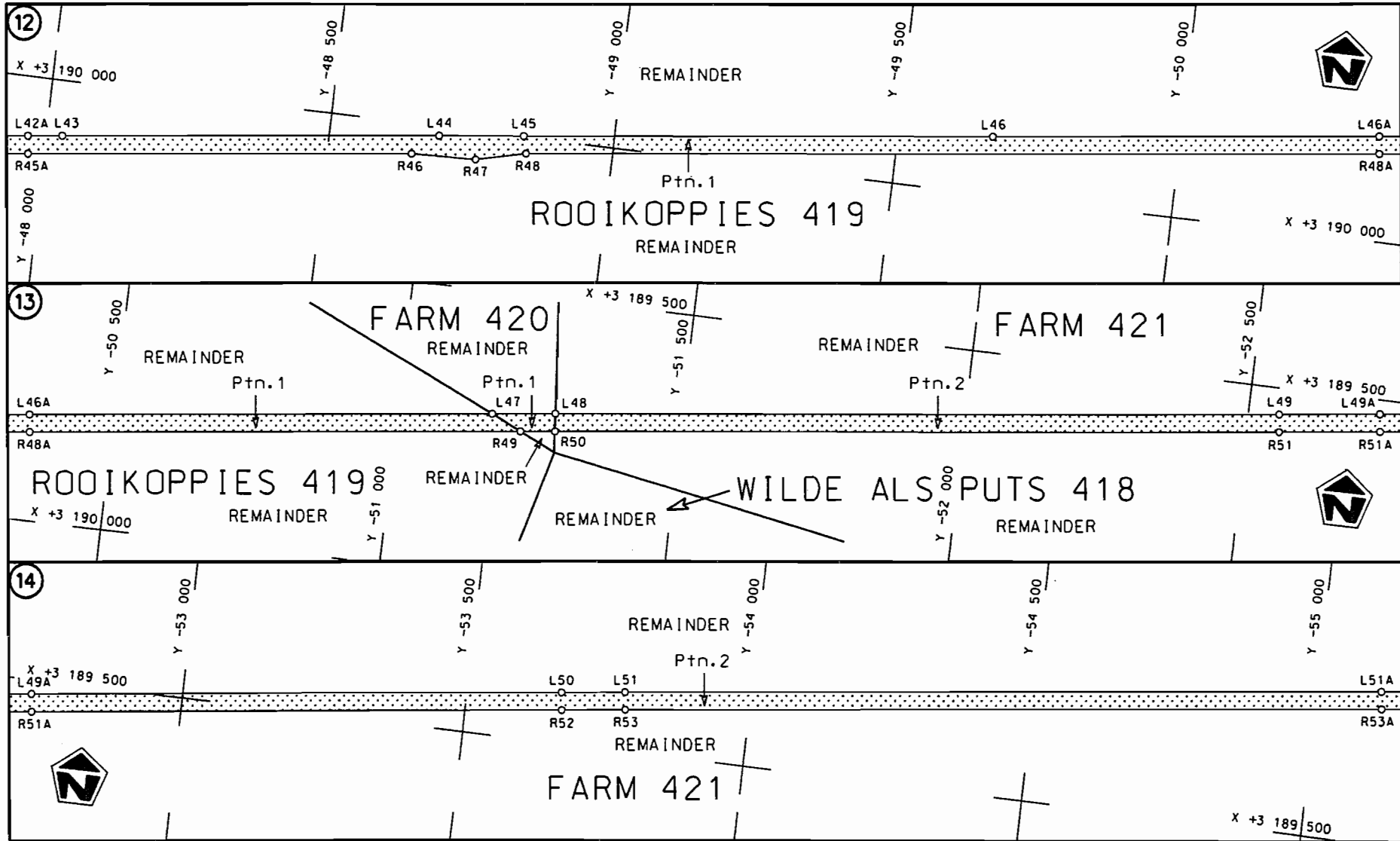


<p>Die Suid Afrikaanse Nasionale Padogentskap Beperk The South African National Roads Agency Limited</p>	<p>Die figuur getoon The figure shown</p>	<p>steldie padreserwe voor van 'n gedeelte represents the road reserve of a portion van Nasionale Roete N8 of National Route</p>	<p>Vel Sheet 3 of 11 Plan P772/09</p>
<p>7</p>			<p>Section</p>



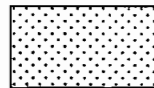
<p>Die Suid Afrikaanse Nasionale Padagentskap Beperk The South African National Roads Agency Limited</p>	<p>Die figuur getoon The figure shown</p> 	<p>steldie padreserwe voor van 'n gedeelte represents the road reserve of a portion van Nasionale Roete N8 of National Route N8</p> <p>Seksie Section</p> <p>7</p>	<p>Vel Sheet 4 van of 11</p> <p>Plan P772/09</p>
--	--	--	--





Die Suid Afrikaanse Nasionale Padogentskap Beperk  
The South African National Roads Agency Limited

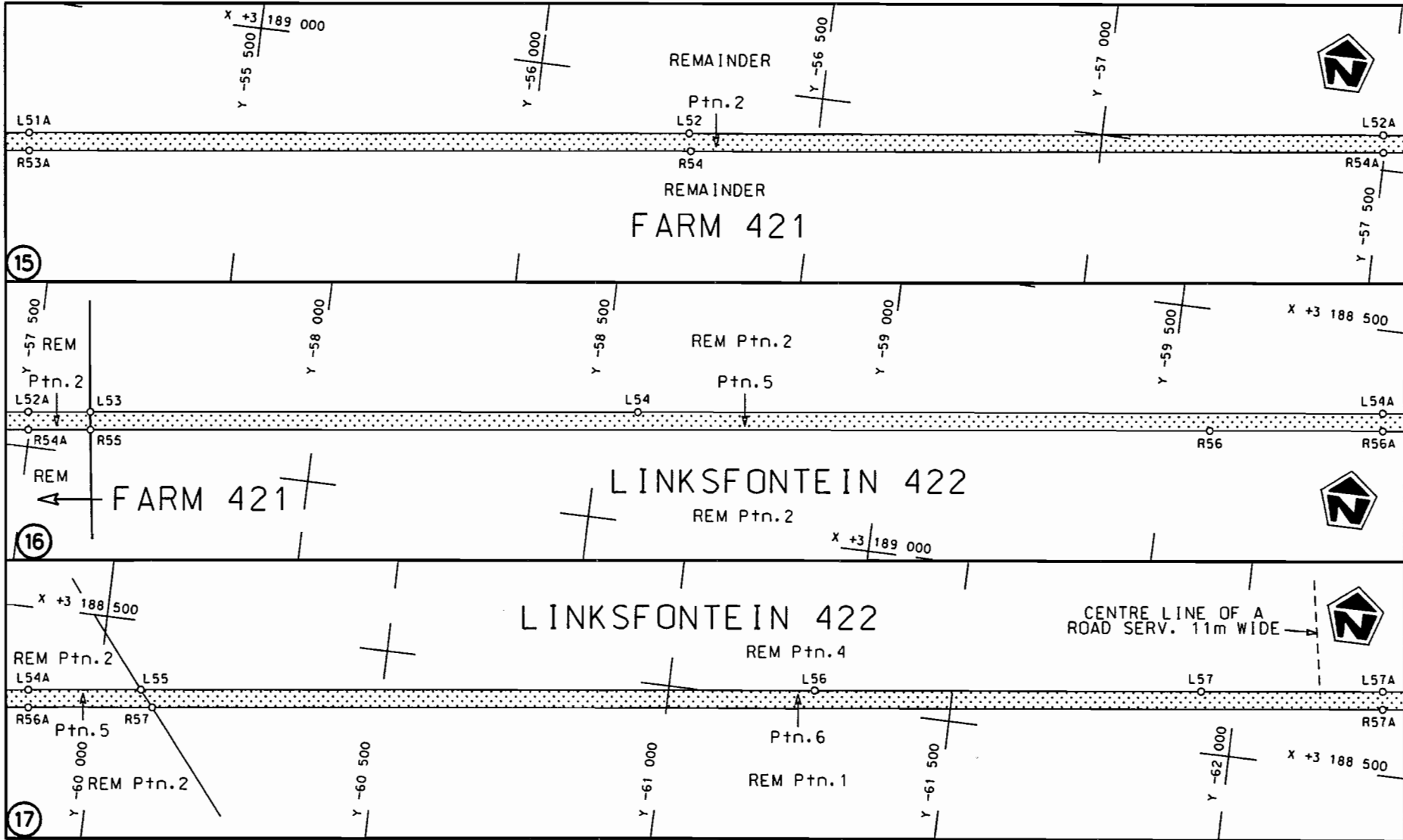
Die figuur getoon  
The figure shown

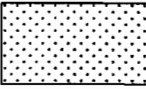


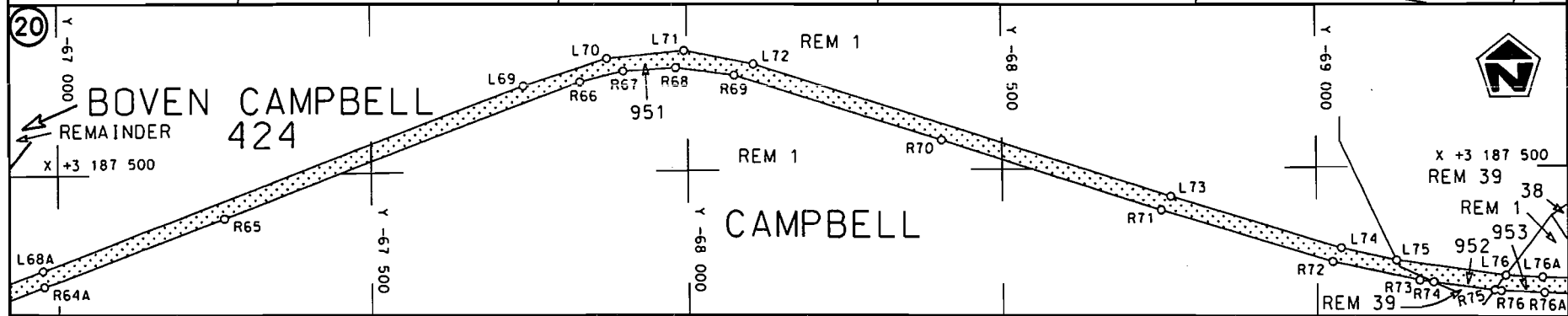
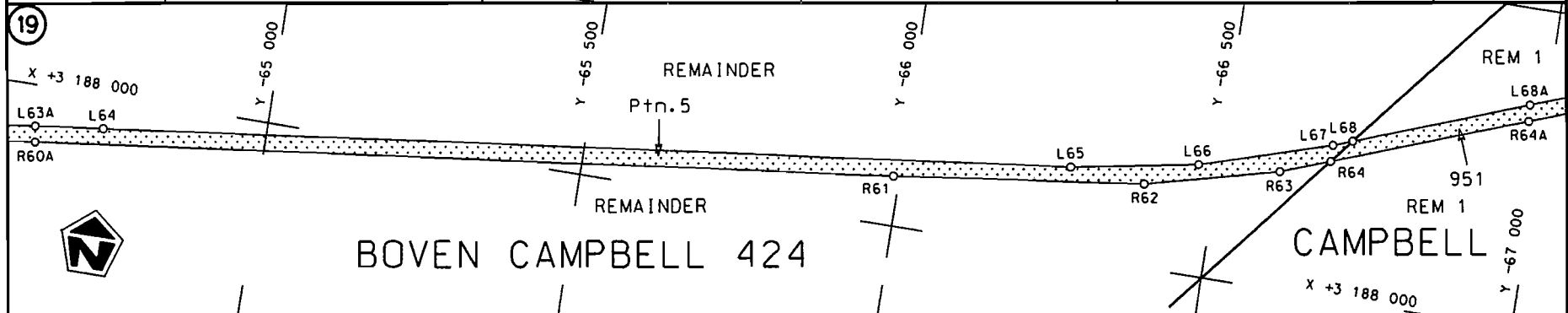
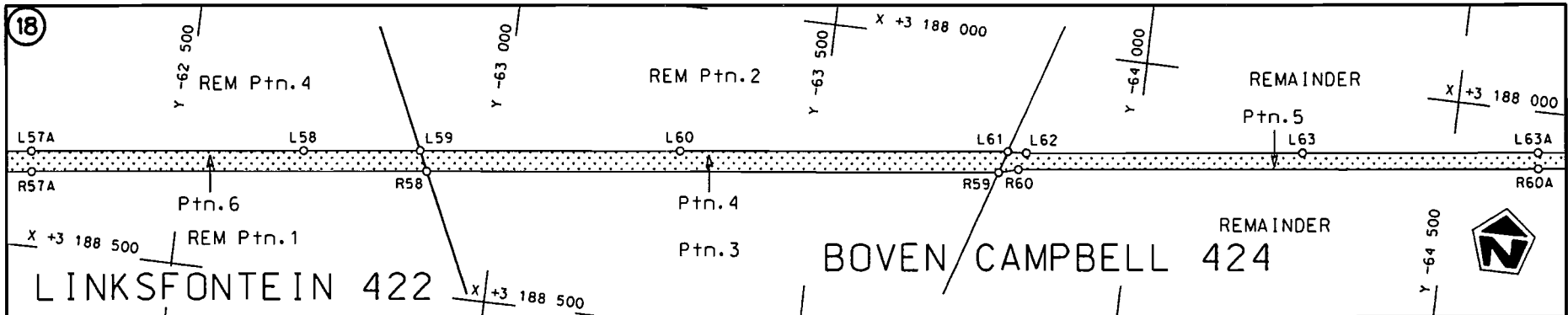
steldie padreserwe voor van 'n gedeelte  
represents the road reserve of a portion  
van Nasionale Roete N8 Sektie  
of National Route of Section

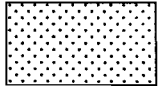
Vel  
Sheet 5 van  
of 11

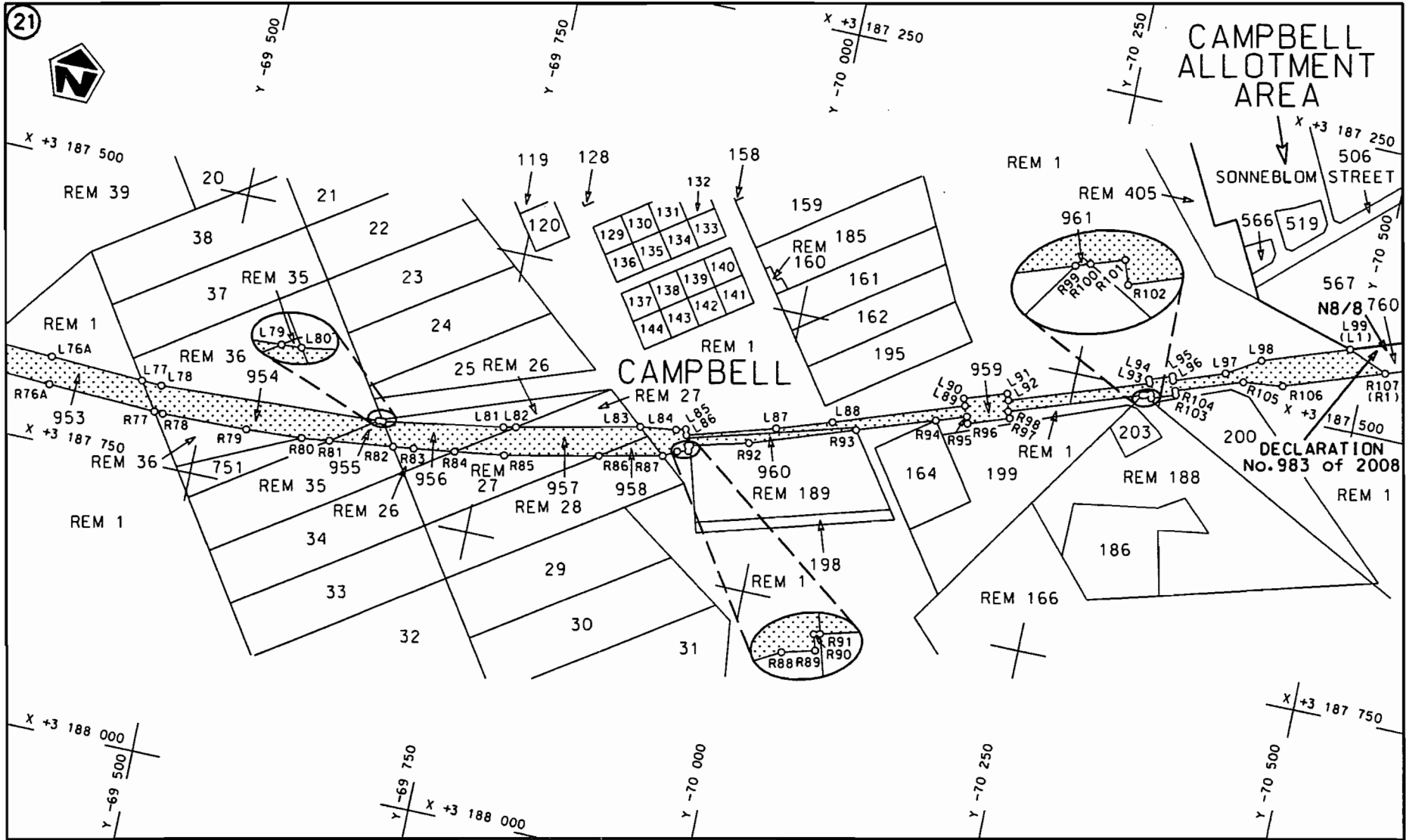
Plan P772/09



<p>Die Suid Afrikaanse Nasionale Padagentskap Beperk The South African National Roads Agency Limited</p>	<p>Die figuur getoon The figure shown</p>		<p>steldie padreserwe voor van 'n gedeelte represents the road reserve of a portion van Nasionale Roete N8 Seksie of National Route N8 Section 7</p>	<p>Vel Sheet 6 van of 11</p>
				<p>Plan P772/09</p>



<p>Die Suid Afrikaanse Nasionale Padogentskop Beperk The South African National Roads Agency Limited</p>	<p>Die figuur getoon The figure shown</p>		<p>stel die padreserwe voor van 'n gedeelte represents the road reserve of a portion van Nasionale Roete N8 Seksie Section of National Route N8 Section 7</p>	<p>Vel Sheet 7 van of 11 Plan P722/09</p>
--	---	--	---	---



<p>Die Suid Afrikaanse Nasionale Padagentskap Beperk The South African National Roads Agency Limited</p>	<p>Die figuur getoon The figure shown</p>		<p>steldie padreserwe voor van 'n gedeelte represents the road reserve of a portion van Nasionale Roete N8 Seksie Section of National Route 7</p>	<p>Vel Sheet 8 van of 11 Plan P772/09</p>
--	---	--	---	---

PADRESERWE KOÖRDINATE				/	ROAD RESERVE CO-ORDINATES			
LINKERKANT/LEFT HAND SIDE					REGTERKANT/RIGHT HAND SIDE			
	Y	X	WG	23°	Y	X		
L1	-24 214.140	3 192	373.990	R1	-24 209.667	3 192	397.731	
L2	-24 266.260	3 192	383.820	R2	-24 263.310	3 192	405.840	
L3	-24 265.260	3 192	392.190	R3	-24 371.700	3 192	425.910	
L4	-24 369.170	3 192	411.200	R4	-24 696.710	3 192	485.770	
L5	-24 700.340	3 192	472.190	R5	-24 922.640	3 192	527.360	
L6	-24 925.180	3 192	513.550	R6	-25 089.830	3 192	558.140	
L7	-25 092.370	3 192	544.310	R7	-25 173.430	3 192	573.530	
L8	-25 175.980	3 192	559.690	R8	-25 180.280	3 192	574.790	
L9	-25 186.640	3 192	561.650	R9	-25 182.700	3 192	573.270	
L10	-25 224.050	3 192	571.440	R10	-25 368.780	3 192	607.920	
L11	-25 370.470	3 192	598.740	R11	-25 366.570	3 192	619.860	
L12	-25 372.040	3 192	590.180	R12	-25 372.420	3 192	615.840	
L13	-25 376.890	3 192	578.610	R13	-25 406.840	3 192	622.170	
L14	-25 928.190	3 192	682.320	R14	-25 481.720	3 192	642.270	
L15	-26 223.330	3 192	742.380	R15	-25 784.360	3 192	699.150	
L16	-27 389.180	3 192	614.260	R16	-25 794.780	3 192	705.460	
L17	-27 389.650	3 192	618.700	R17	-26 001.240	3 192	745.330	
L18	-27 870.440	3 192	560.640	R18	-26 018.120	3 192	742.600	
L19	-30 451.670	3 192	243.620	R19	-26 198.660	3 192	772.970	
L20	-30 944.930	3 192	183.470	R20	-26 307.370	3 192	784.540	
L21	-31 948.260	3 192	061.630	R21	-26 380.140	3 192	773.050	
L22	-32 455.710	3 191	999.420	R22	-26 811.720	3 192	719.560	
L23	-32 942.160	3 191	940.160	R23	-27 392.960	3 192	649.550	
L24	-33 928.120	3 191	819.200	R24	-27 883.690	3 192	589.850	
L25	-34 329.720	3 191	770.360	R25	-28 709.050	3 192	488.750	
L26	-34 334.510	3 191	770.340	R26	-29 344.480	3 192	412.210	
L27	-37 117.950	3 191	430.100	R27	-29 996.310	3 192	331.190	
L28	-37 664.630	3 191	362.020	R28	-30 181.640	3 192	308.590	
L29	-38 179.540	3 191	299.100	R29	-30 670.800	3 192	250.050	
L30	-38 584.090	3 191	250.120	R30	-31 165.370	3 192	188.090	
L31	-39 052.030	3 191	193.030	R31	-31 651.240	3 192	128.850	
L32	-40 856.520	3 190	971.780	R32	-32 113.820	3 192	072.990	
L33	-43 896.520	3 190	599.040	R33	-34 333.670	3 191	801.180	
L34	-44 972.760	3 190	467.910	R34	-37 234.560	3 191	446.490	
L35	-45 724.530	3 190	375.670	R35	-38 597.110	3 191	279.850	
L36	-46 097.140	3 190	328.680	R36	-39 433.940	3 191	176.860	
L37	-46 363.530	3 190	292.850	R37	-40 863.400	3 191	001.580	
L38	-46 370.390	3 190	291.070	R38	-41 516.970	3 190	921.230	
L39	-46 374.950	3 190	292.280	R39	-44 398.740	3 190	568.140	
L40	-46 374.030	3 190	295.300	R40	-44 968.800	3 190	498.570	
L41	-46 380.280	3 190	296.710	R41	-45 482.590	3 190	438.370	
L42	-46 800.880	3 190	245.330	R42	-46 105.120	3 190	360.700	
L43	-48 028.480	3 190	097.010	R43	-46 374.830	3 190	327.840	
L44	-48 691.440	3 190	016.200	R44	-46 587.920	3 190	320.120	
L45	-48 840.050	3 189	998.810	R45	-46 632.880	3 190	297.190	
L46	-49 667.550	3 189	897.680	R46	-48 647.240	3 190	052.470	
L47	-51 165.220	3 189	715.670	R47	-48 759.670	3 190	049.240	
L48	-51 277.680	3 189	702.010	R48	-48 847.480	3 190	028.030	
L49	-52 554.880	3 189	546.800	R49	-51 218.920	3 189	740.340	
L50	-53 667.550	3 189	410.270	R50	-51 280.390	3 189	732.880	
L51	-53 778.510	3 189	396.290	R51	-52 558.540	3 189	577.820	

Vel	9	Van	11	P772/09
Sheet		of		

PADRESERWE KOÖRDINATE				/	ROAD RESERVE CO-ORDINATES				
LINKERKANT/LEFT HAND SIDE					REGTERKANT/RIGHT HAND SIDE				
	Y	X	WG	23°	Y	X			
L52	-56 273.750	3 189 089.310		R52	-53 671.310	3 189 441.060			
L53	-57 604.270	3 188 925.140		R53	-53 782.250	3 189 427.020			
L54	-58 564.720	3 188 806.630		R54	-56 279.980	3 189 119.800			
L55	-60 074.750	3 188 620.990		R55	-57 608.240	3 188 955.980			
L56	-61 255.550	3 188 475.820		R56	-59 575.380	3 188 713.360			
L57	-61 938.120	3 188 392.350		R57	-60 098.050	3 188 649.750			
L58	-62 687.280	3 188 299.770		R58	-62 885.970	3 188 307.850			
L59	-62 871.760	3 188 277.400		R59	-63 785.790	3 188 198.540			
L60	-63 278.810	3 188 228.050		R60	-63 816.910	3 188 189.850			
L61	-63 796.900	3 188 164.530		R61	-65 990.560	3 187 922.540			
L62	-63 826.610	3 188 163.150		R62	-66 387.330	3 187 869.820			
L63	-64 263.180	3 188 109.440		R63	-66 597.800	3 187 816.260			
L64	-64 742.880	3 188 050.810		R64	-66 675.810	3 187 787.370			
L65	-66 268.190	3 187 862.750		R65	-67 265.510	3 187 569.020			
L66	-66 468.120	3 187 826.050		R66	-67 830.220	3 187 358.470			
L67	-66 675.440	3 187 762.240		R67	-67 899.140	3 187 341.870			
L68	-66 705.780	3 187 750.920		R68	-67 982.030	3 187 337.040			
L69	-67 740.890	3 187 364.630		R69	-68 075.440	3 187 349.620			
L70	-67 873.380	3 187 321.630		R70	-68 402.900	3 187 453.290			
L71	-67 995.400	3 187 310.300		R71	-68 752.320	3 187 565.050			
L72	-68 106.150	3 187 332.000		R72	-69 025.150	3 187 648.670			
L73	-68 767.390	3 187 543.700		R73	-69 163.100	3 187 678.750			
L74	-69 038.810	3 187 626.880		R74	-69 184.950	3 187 681.700			
L75	-69 126.430	3 187 646.800		R75	-69 282.150	3 187 694.810			
L76	-69 299.900	3 187 671.970		R76	-69 292.390	3 187 696.200			
L77	-69 441.200	3 187 678.960		R77	-69 457.510	3 187 703.390			
L78	-69 458.900	3 187 679.740		R78	-69 465.060	3 187 703.720			
L79	-69 653.790	3 187 670.240		R79	-69 540.920	3 187 701.920			
L80	-69 657.750	3 187 670.040		R80	-69 589.840	3 187 699.480			
L81	-69 762.890	3 187 653.060		R81	-69 614.170	3 187 696.700			
L82	-69 773.720	3 187 650.710		R82	-69 671.090	3 187 690.010			
L83	-69 880.610	3 187 627.510		R83	-69 689.110	3 187 687.890			
L84	-69 912.390	3 187 623.380		R84	-69 725.240	3 187 683.090			
L85	-69 920.740	3 187 621.010		R85	-69 768.810	3 187 677.300			
L86	-69 922.380	3 187 626.150		R86	-69 850.160	3 187 660.210			
L87	-69 999.050	3 187 603.300		R87	-69 905.570	3 187 648.510			
L88	-70 046.770	3 187 587.430		R88	-69 917.300	3 187 642.000			
L89	-70 159.040	3 187 548.490		R89	-69 926.930	3 187 639.450			
L90	-70 156.640	3 187 542.340		R90	-69 925.510	3 187 634.830			
L91	-70 193.840	3 187 530.020		R91	-69 927.370	3 187 634.340			
L92	-70 195.980	3 187 535.720		R92	-69 978.200	3 187 620.940			
L93	-70 315.190	3 187 494.670		R93	-70 068.580	3 187 589.820			
L94	-70 313.720	3 187 491.420		R94	-70 136.090	3 187 566.620			
L95	-70 333.850	3 187 484.460		R95	-70 162.620	3 187 557.440			
L96	-70 335.020	3 187 488.070		R96	-70 164.510	3 187 563.420			
L97	-70 379.690	3 187 472.110		R97	-70 200.360	3 187 550.790			
L98	-70 408.520	3 187 454.360		R98	-70 197.750	3 187 545.210			
L99	-70 483.490	3 187 428.220		R99	-70 311.000	3 187 506.400			
				R100	-70 313.130	3 187 505.670			
				R101	-70 317.980	3 187 504.010			
				R102	-70 319.160	3 187 507.520			
					Vel	10	Van	11	P772/09
					Sheet		of		

PADRESERWE KOÖRDINATE			ROAD RESERVE CO-ORDINATES		
LINKERKANT/LEFT HAND SIDE			REGTERKANT/RIGHT HAND SIDE		
Y	X	WG 23°	Y	X	
			R103	-70 340.100	3 187 500.080
			R104	-70 338.810	3 187 496.330
			R105	-70 396.590	3 187 476.340
			R106	-70 431.650	3 187 472.660
			R107	-70 518.070	3 187 442.780

Vel	11	Van	11	P772/09
Sheet		of		