

Government Gazette Staatskoerant

REPUBLIC OF SOUTH AFRICA
REPUBLIEK VAN SUID-AFRIKA

Vol. 544

Pretoria, 19 October
Oktober 2010

No. 33639

IMPORTANT NOTICE

The Government Printing Works will not be held responsible for faxed documents not received due to errors on the fax machine or faxes received which are unclear or incomplete. Please be advised that an "OK" slip, received from a fax machine, will not be accepted as proof that documents were received by the GPW for printing. If documents are faxed to the GPW it will be the sender's responsibility to phone and confirm that the documents were received in good order.

Furthermore the Government Printing Works will also not be held responsible for cancellations and amendments which have not been done on original documents received from clients.

CONTENTS**INHOUD**

<i>No.</i>	<i>Page No.</i>	<i>Gazette No.</i>	<i>No.</i>	<i>Bladsy No.</i>	<i>Koerant No.</i>
GOVERNMENT NOTICE			GOEWERMENSKENNISGEWING		
Transport, Department of			Vervoer, Departement van		
<i>Government Notice</i>			<i>Goewermentskennisgewing</i>		
913			913		
South African National Roads Agency Limited and the National Roads Act (7/1998): The South African National Roads Agency Limited: Declaration amendment of National Road R27 Section 10: Amendment of Declaration No. 285 of 2006	3	33639	Suid-Afrikaanse Nasionale Padagentskap Beperk en die Nasionale Paaie Wet (7/1998): Die Suid-Afrikaanse Nasionale Padagentskap Beperk: Verklaring wysiging van Nasionale Pad R27 Seksie 10: Wysiging van Verklaring No. 285 van 2006	4	33639

GOVERNMENT NOTICE

DEPARTMENT OF TRANSPORT

No. 913

19 October 2010

THE SOUTH AFRICAN NATIONAL ROADS AGENCY LIMITED

Registration No: 98/09584/06

DECLARATION AMENDMENT OF NATIONAL ROAD R27 SECTION 10

AMENDMENT OF DECLARATION No. 285 OF 2006

By virtue of section 40(1)(b) of the South African National Roads Agency Limited and the National Roads Act, 1998 (Act No. 7 of 1998), I hereby amend Declaration No. 285 of 2006, by substituting the descriptive section of the route from Brandvlei up to Kenhardt, with the subjoined sheets 1 to 30 of Plan No. P707/08.

(National Road R27 Section 10: Brandvlei – Kenhardt)



MINISTER OF TRANSPORT

GOEWERMENTSKENNISGEWING

DEPARTEMENT VAN VERVOER

No. 913

19 Oktober 2010

DIE SUID-AFRIKAANSE NASIONALE PADAGENTSKAP BEPERK

Registrasie No: 98/09584/06

VERKLARING WYSIGING VAN NASIONALE PAD R27 SEKSIE 10

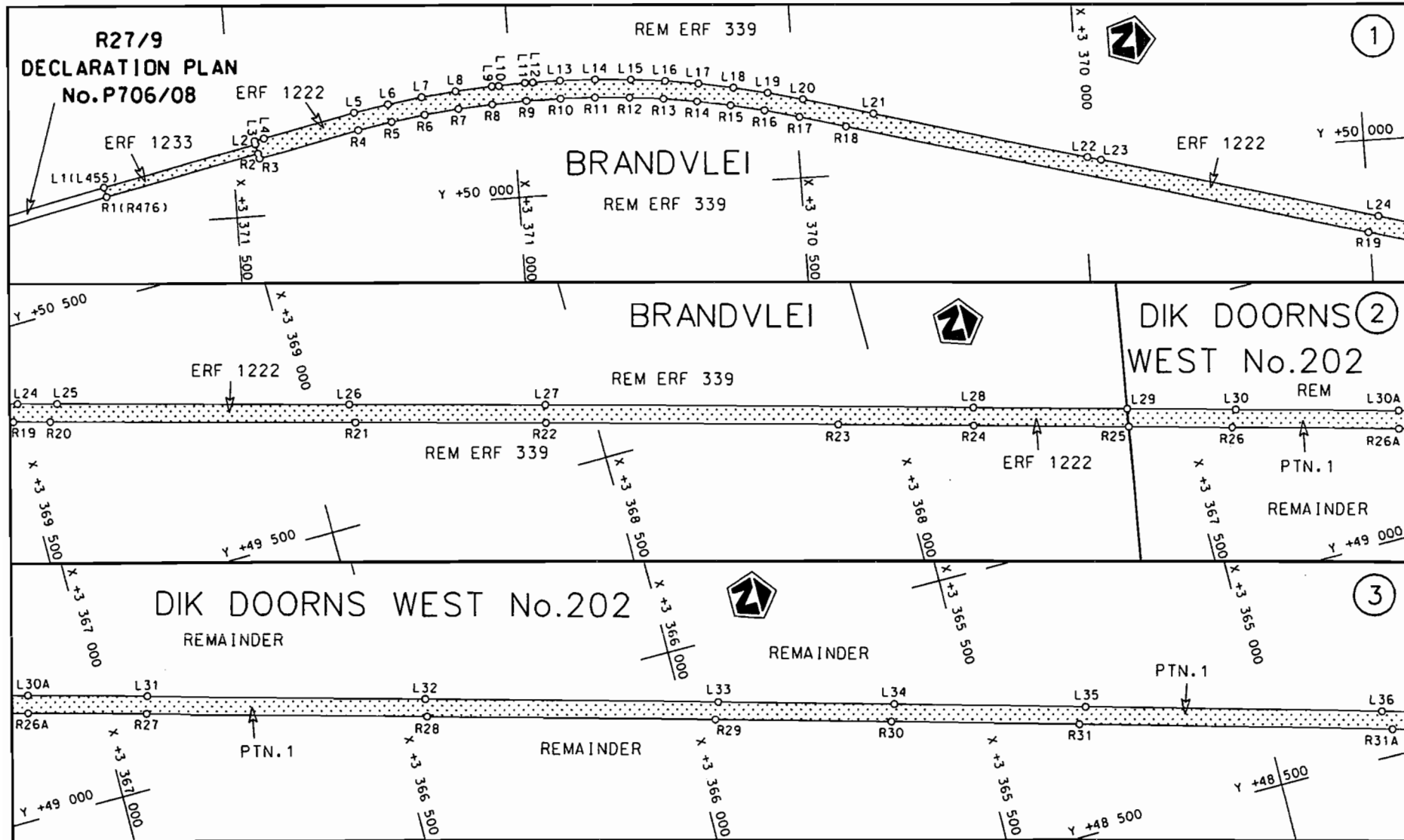
WYSIGING VAN VERKLARING NO. 285 VAN 2006


Kragtens Artikel 40(1)(b) van die Suid-Afrikaanse Nasionale Padagentskap Beperk en die Nasionale Paaie Wet, 1998 (Wet no. 7 van 1998), wysig ek hiermee Verklaring no. 285 van 2006, deur die beskrywende gedeelte van die roete vanaf Brandvlei tot by Kenhardt, te vervang met meegaande velle 1 tot 30 van Plan no. P707/08.

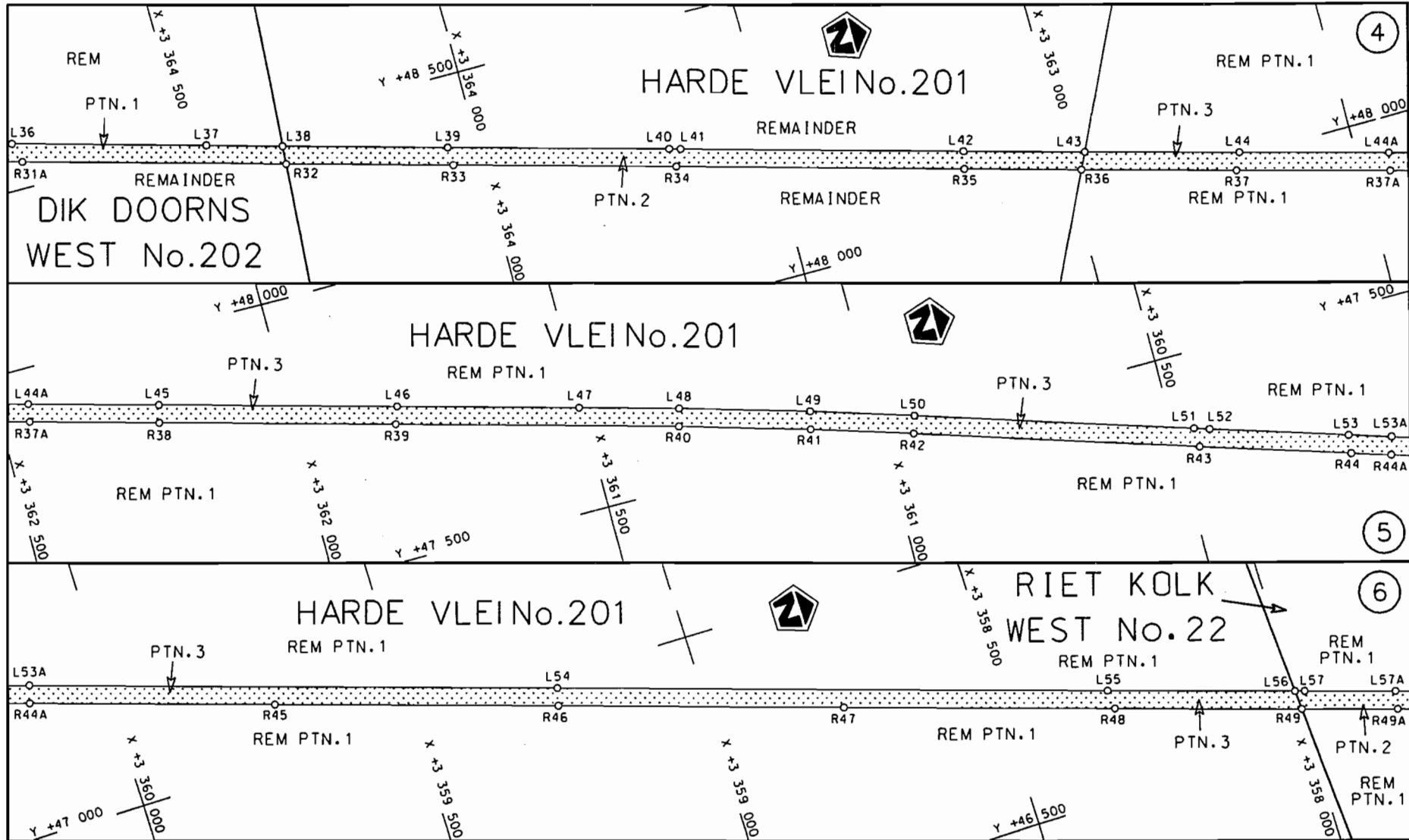
(Nasionale Pad R27 Seksie 10: Brandvlei – Kenhardt)




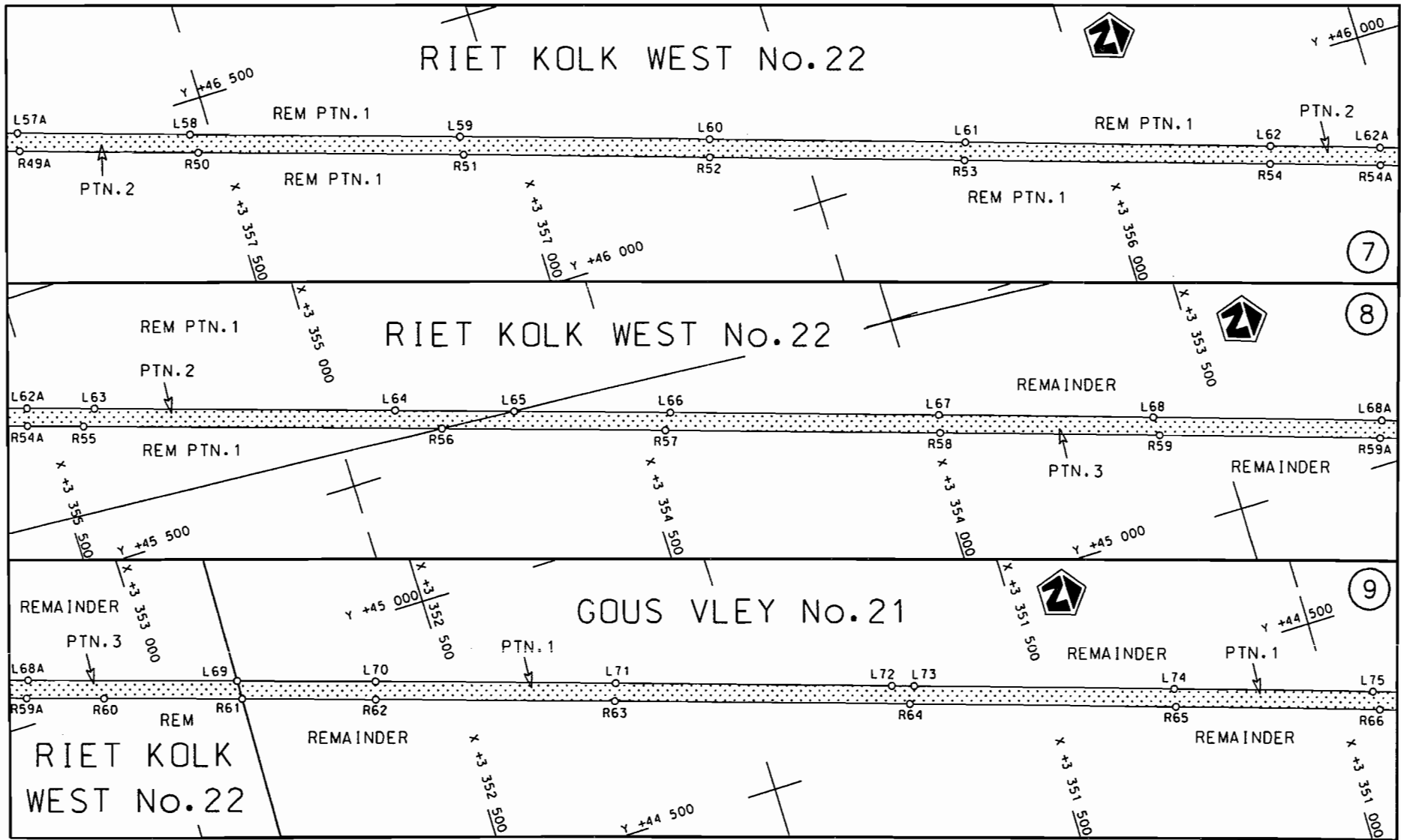
MINISTER VAN VERVOER



<p>Die Suid Afrikaanse Nasionale Padagentskop Beperk The South African National Roads Agency Limited</p>	<p>Die figuur getoon The figure shown</p> 	<p>steldie padreserwe voor van 'n gedeelte represents the road reserve of a portion van Nasionale Raete of National Route R27</p> <p>Seksie Section 10</p>	<p>Vel Sheet 1 van of 30 Plan P707/08</p>
--	--	--	---

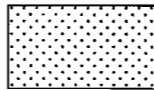


<p>Die Suid Afrikaanse Nasionale Padagentskap Beperk The South African National Roads Agency Limited</p>	<p>Die figuur getaan The figure shown</p>		<p>steldie padreserwe voor van 'n gedeelte represents the road reserve of a portion van Nasionale Roete R27 of National Route Seksie Section 10</p>	<p>Vel Sheet 2 van of 30 Plan P707/08</p>
--	---	--	---	---



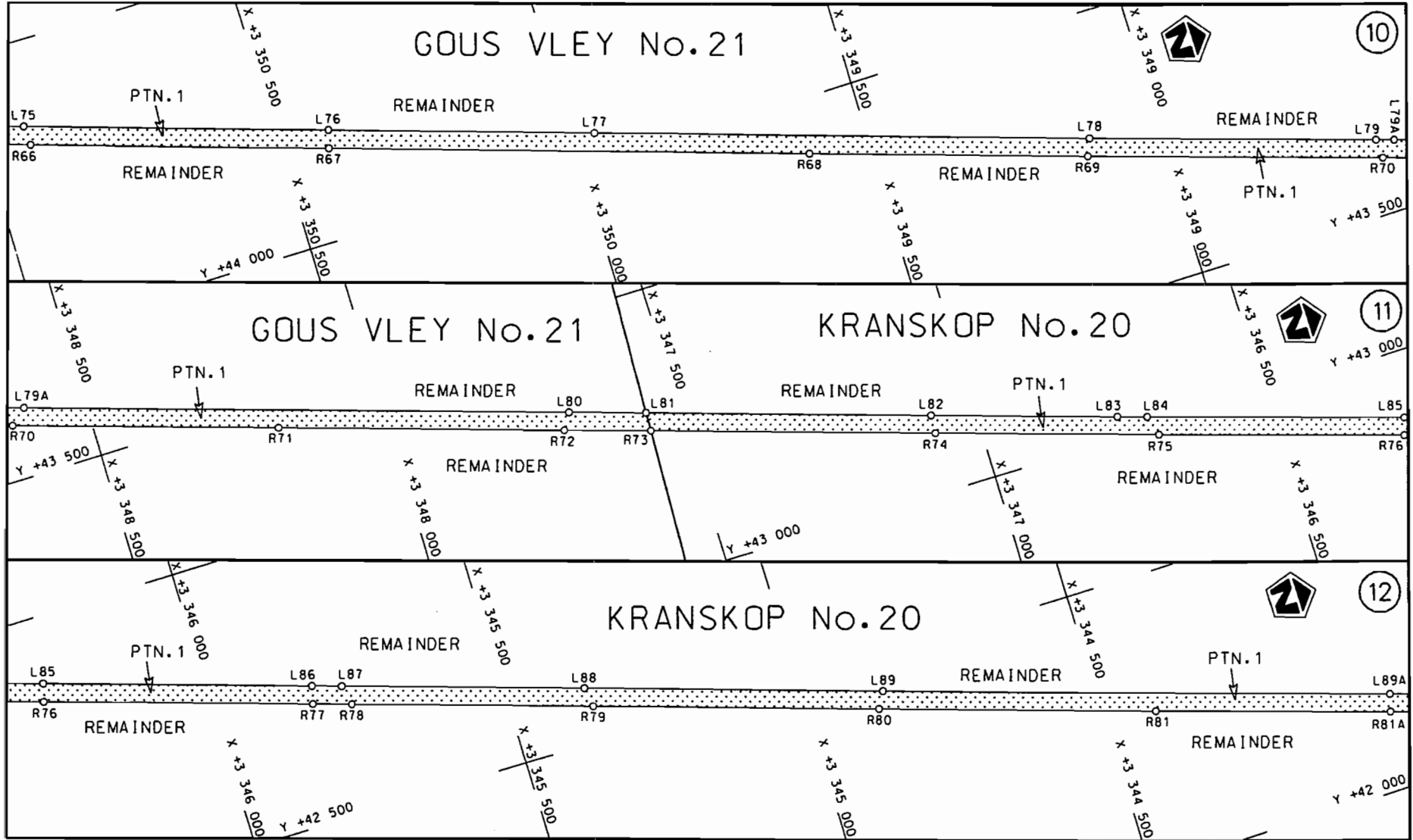
Die Suid Afrikaanse Nasionale Padagentskap Beperk
The South African National Roads Agency Limited

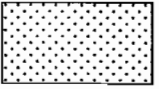
Die figuur getoon
The figure shown

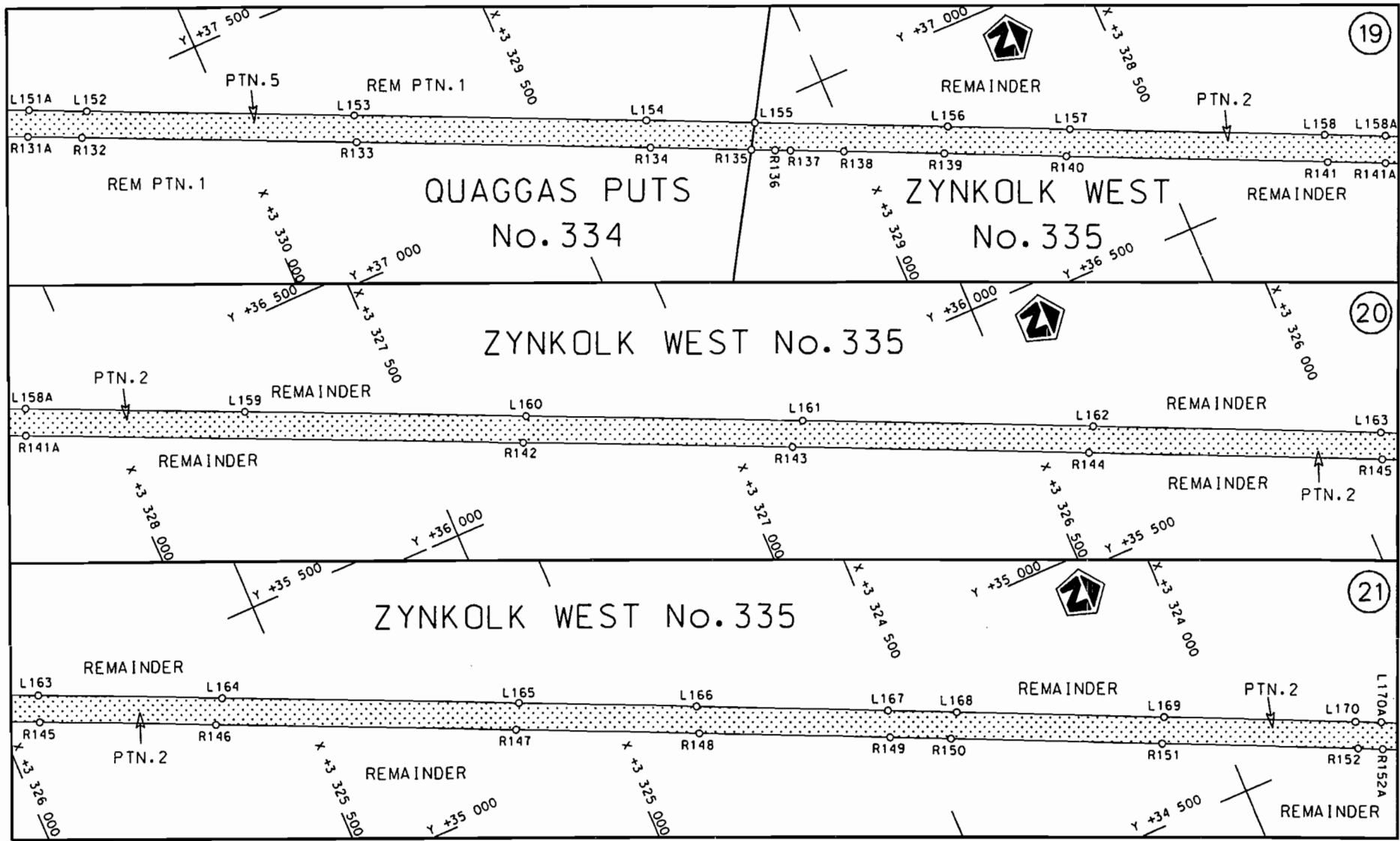


steldie padreserwe voor van 'n gedeelte
represents the road reserve of a portion
van Nasionale Roete R27 Sektie 10
of National Route R27 Section 10

Vel Sheet 3 van 30
Plan P707/08

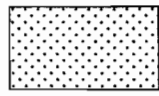


<p>Die Suid Afrikaanse Nasionale Padogenskap Beperk The South African National Roads Agency Limited</p>	<p>Die figuur getoon The figure shown</p> 	<p>steldie padreserwe voor van 'n gedeelte represents the road reserve of a portion van Nasionale Roete R27 Seksie of National Route Section 10</p>	<p>Vel Sheet 4 van of 30 Plan P707/08</p>
---	--	---	---



Die Suid Afrikaanse Nasionale Padagentskap Beperk
The South African National Roads Agency Limited

Die figuur getoon
The figure shown

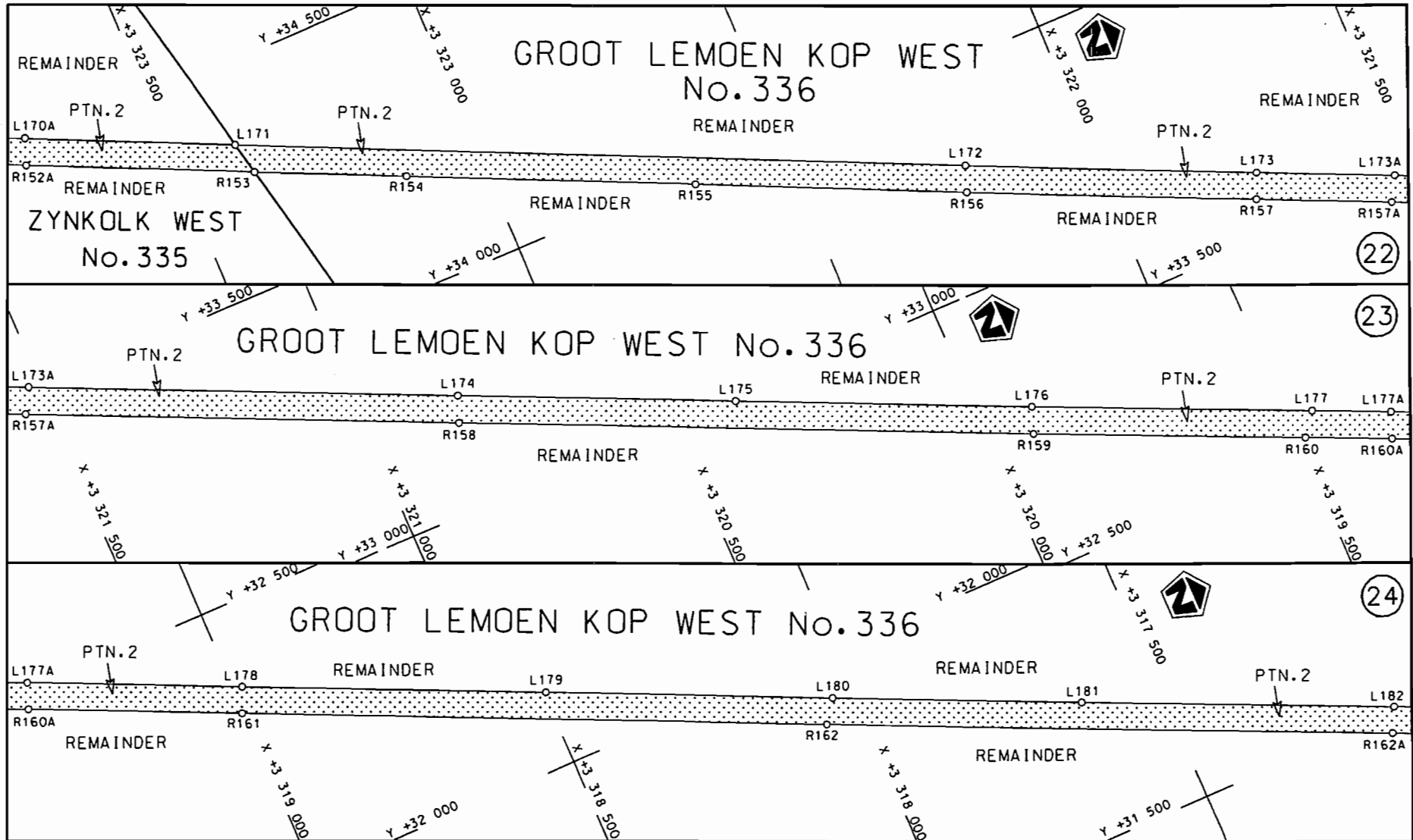



steldie padreserwe voor van 'n gedeelte
represents the road reserve of a portion
van Nasionale Roete R27 Seksie
of National Route Section

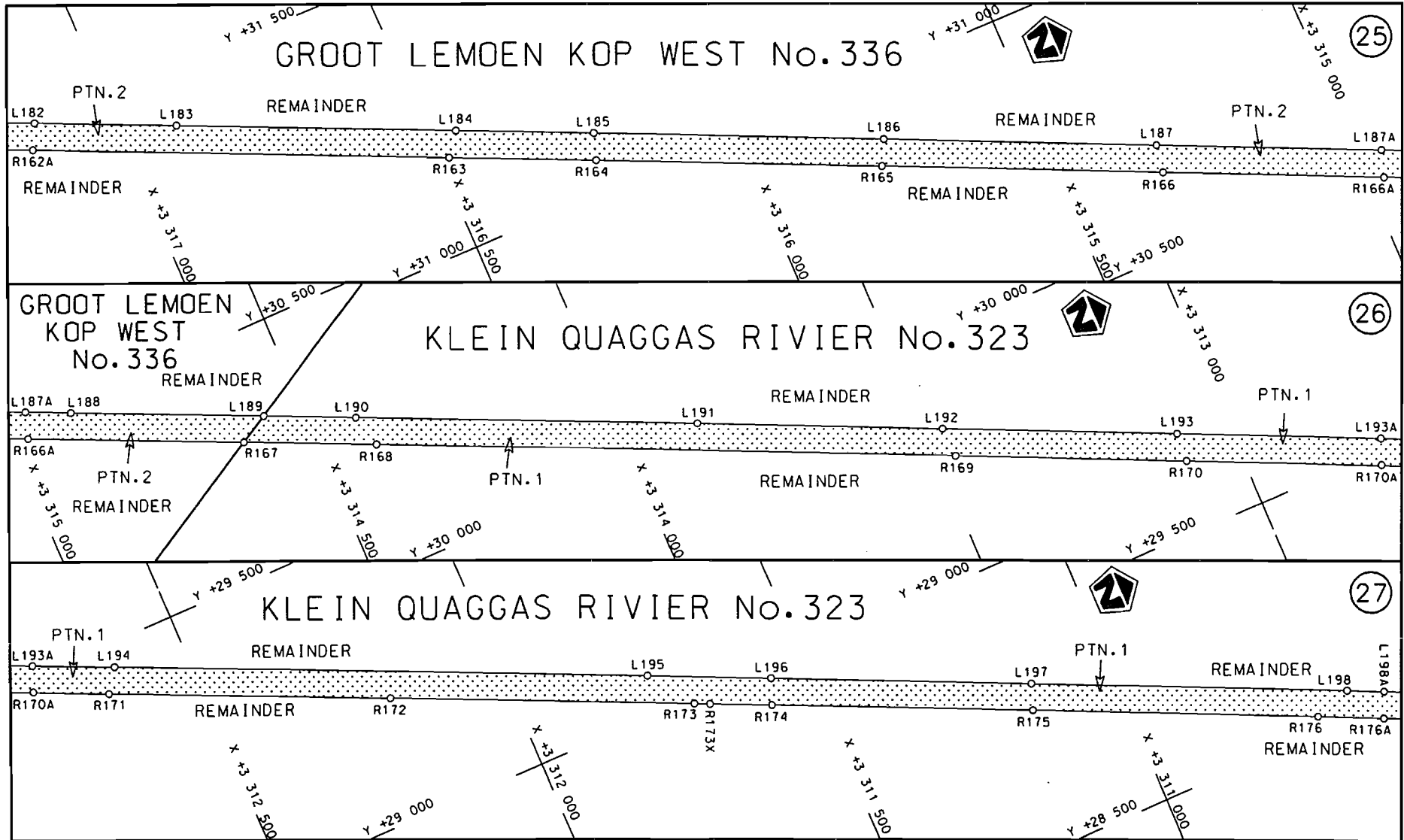
10

Vel
Sheet 7 van
of 30

Plan P707/08

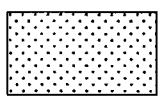


<p>Die Suid Afrikaanse Nasionale Padagentskap Beperk The South African National Roads Agency Limited</p>	<p>Die figuur getoon The figure shown</p>		<p>stel die padreserwe voor van 'n gedeelte represents the road reserve of a portion van Nasionale Roete of National Route</p>	<p>Vel Sheet 8 van of 30 Plan P707/08</p>
			<p>R27 Seksie Section 10</p>	



Die Suid Afrikaanse Nasionale Padagentskap Beperk
The South African National Roads Agency Limited

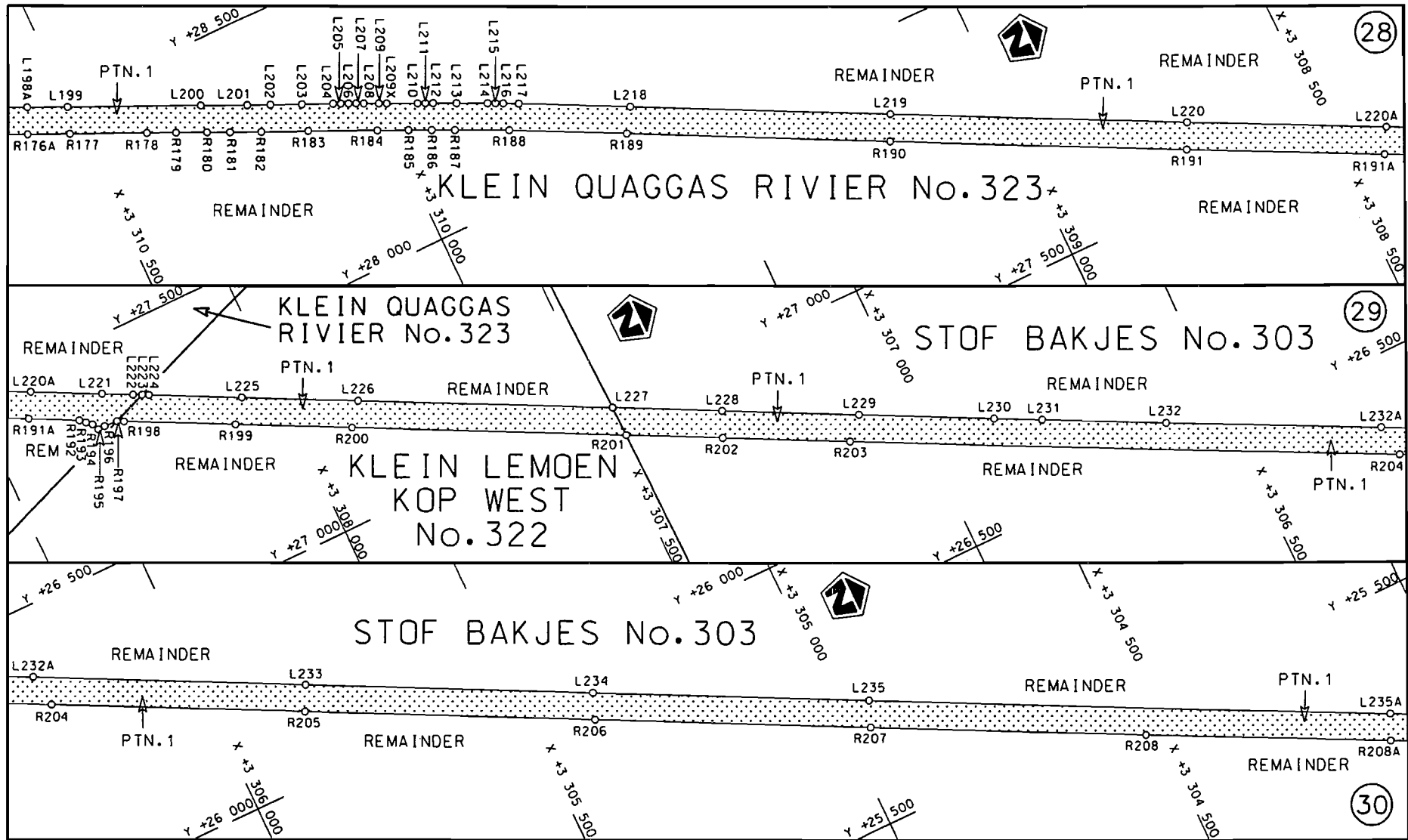
Die figuur getoon
The figure shown

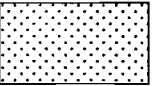


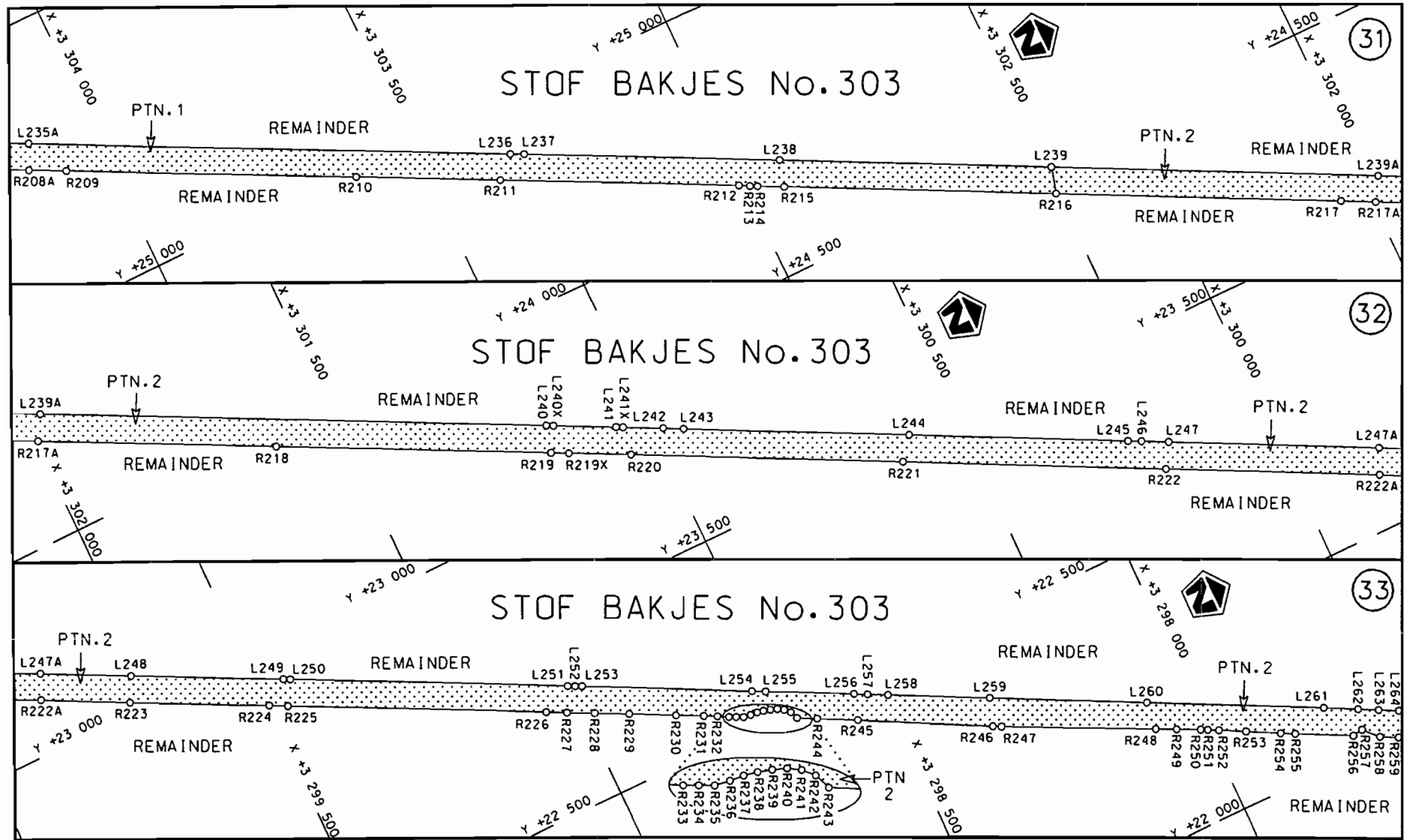
steldie padreserwe voor van 'n gedeelte
represents the road reserve of a portion
van Nasionale Roete R27 Sektie
of National Route R27 Section

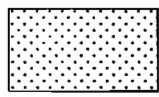
10

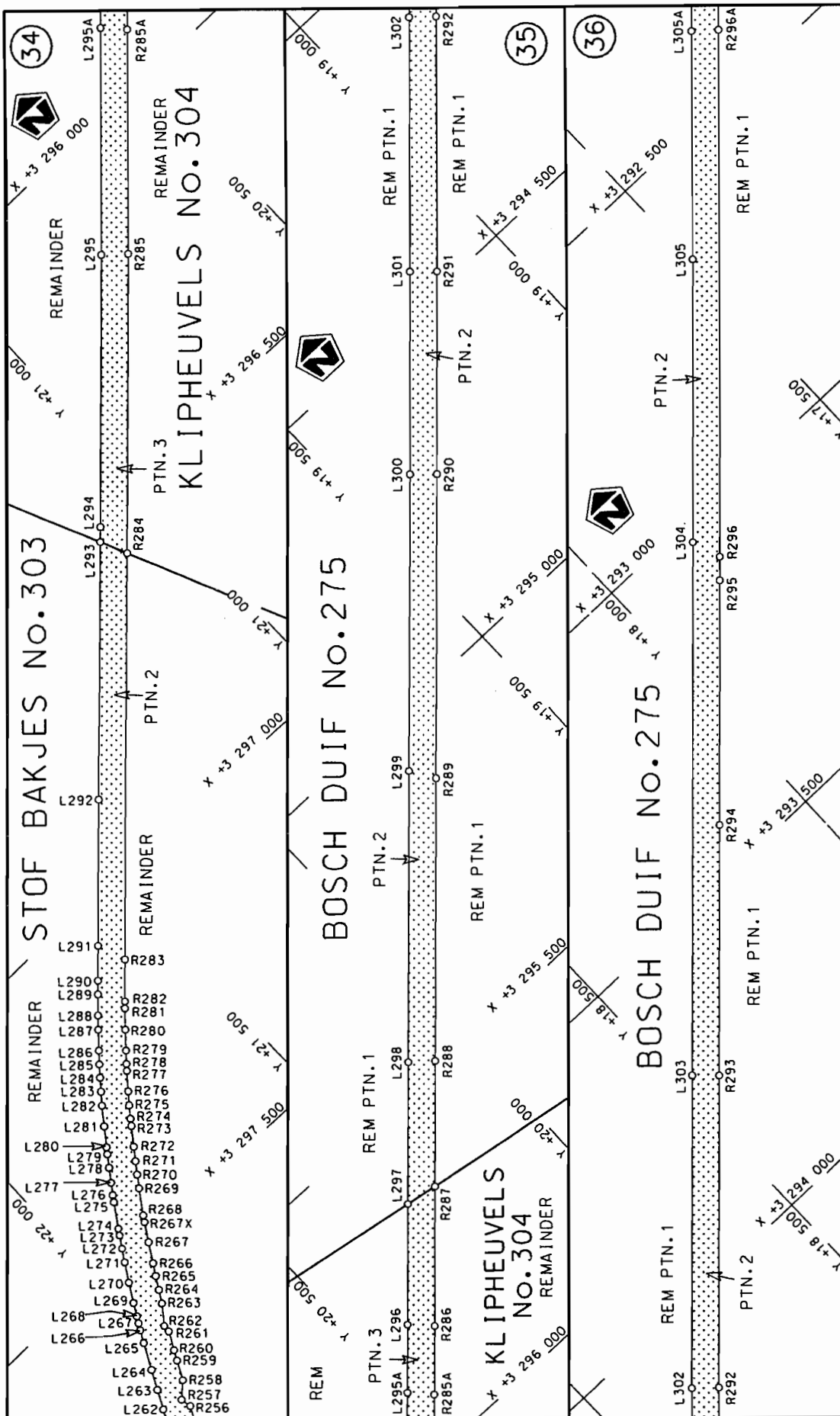
Vel Sheet 9 van of 30
Plan P707/08



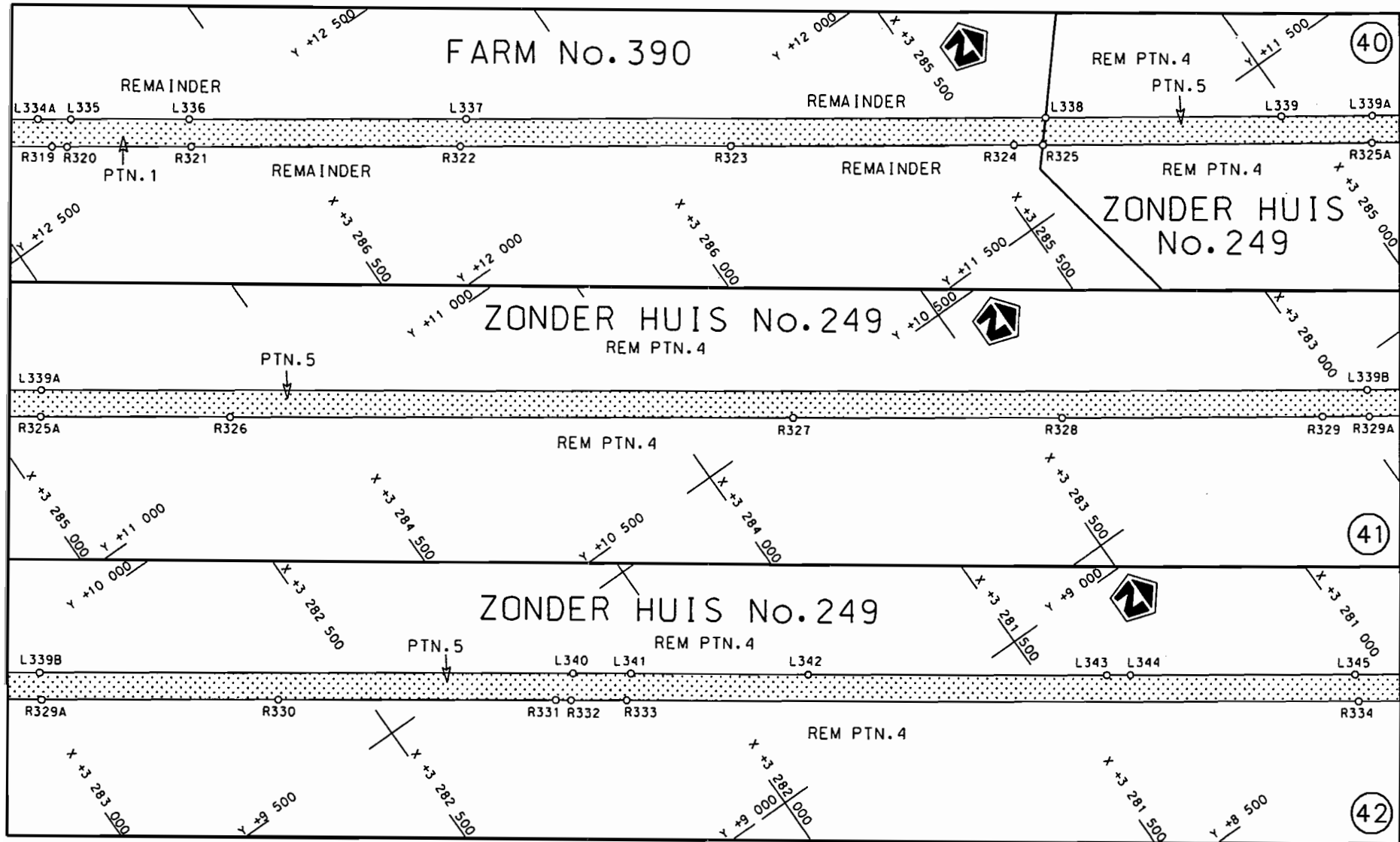
<p>Die Suid Afrikaanse Nasionale Padagentskap Beperk The South African National Roads Agency Limited</p>	<p>Die figuur getoon The figure shown</p>	 <p>stel die padreserwe voor van 'n gedeelte represents the road reserve of a portion van Nasionale Roete R27 Seksie of National Route R27 Section</p>	<p>Vel Sheet 10 van of 30</p>
<p>10</p>			<p>Plan P707/08</p>




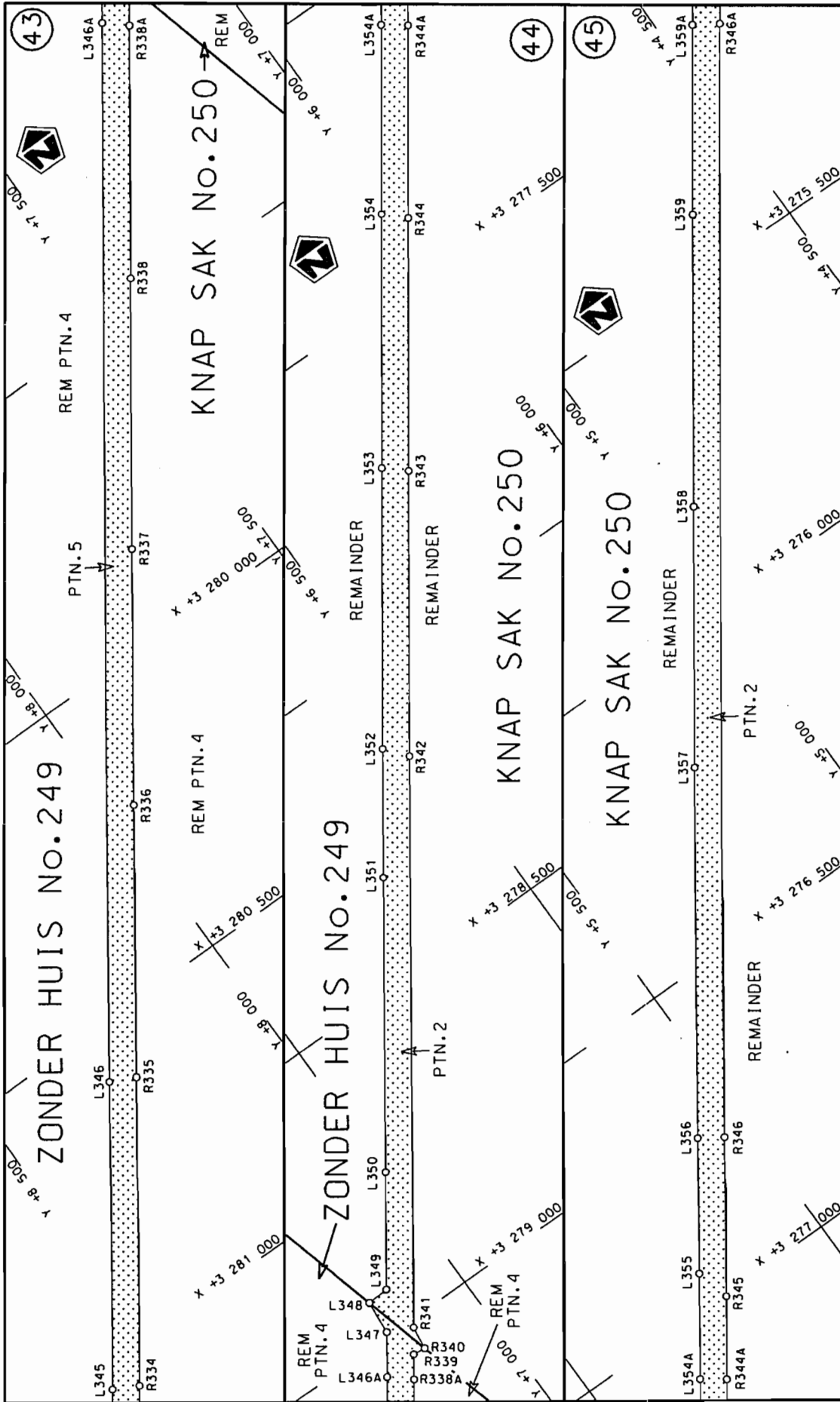
Die Suid Afrikaanse Nasionale Padogentskap Beperk The South African National Roads Agency Limited	Die figuur getoon The figure shown	 steldie padreserwe voor van 'n gedeelte represents the road reserve of a portion van Nasionale Roete R27 Seksie of National Route R27 Section	Vel 11 van Sheet of 30
10			Plan P707/08



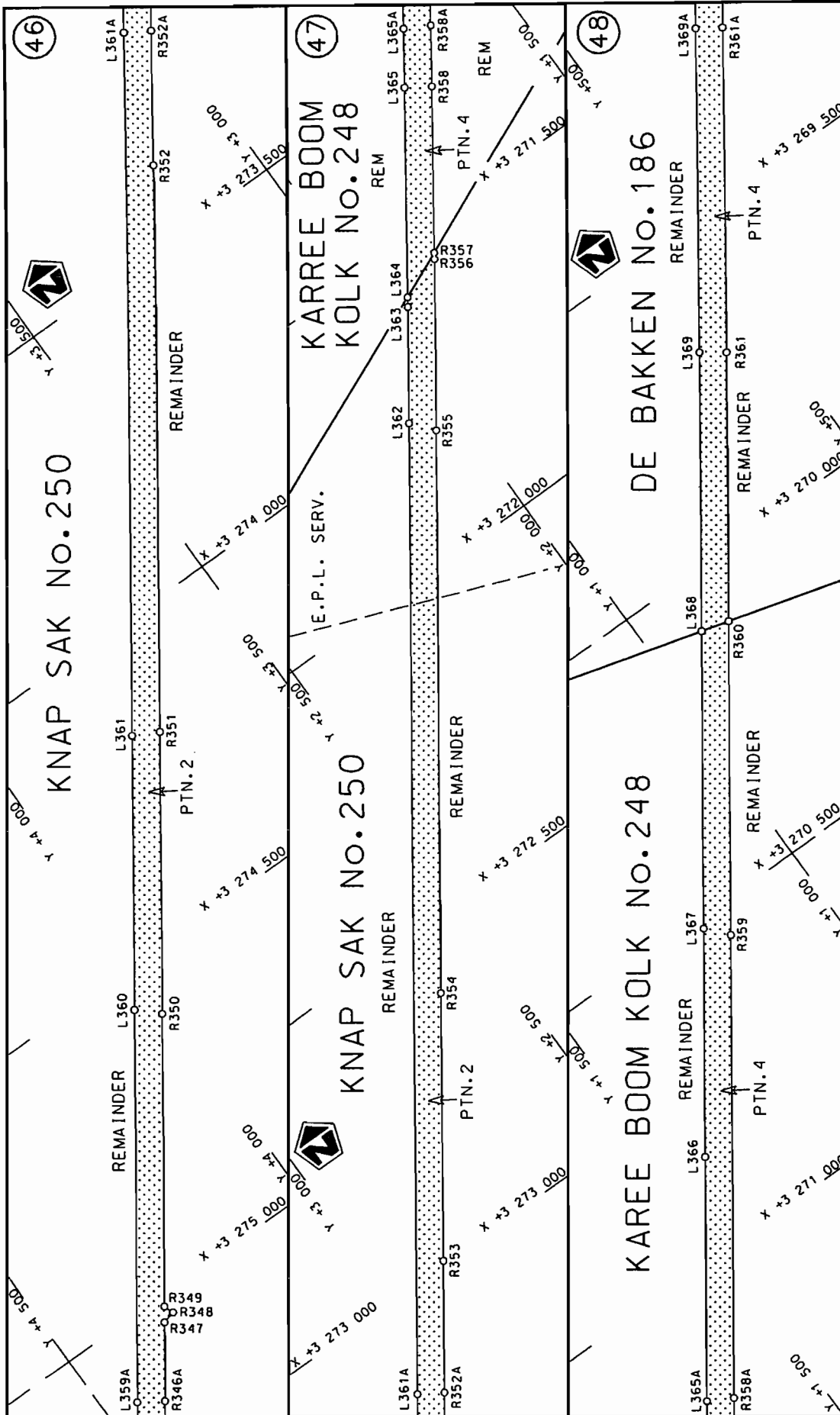
<p>Die Suid Afrikaanse Nasionale Padagentskap Beperk The South African National Roads Agency Limited</p>	<p>Die figuur getoon The figure shown</p>	<p>steldie podreserwe voor van 'n gedeelte represents the road reserve of a portion van Nasionale Roete R27 of National Route</p>
<p>Vel Sheet 12 of 30</p>	<p>10</p>	<p>Plan P707/08</p>



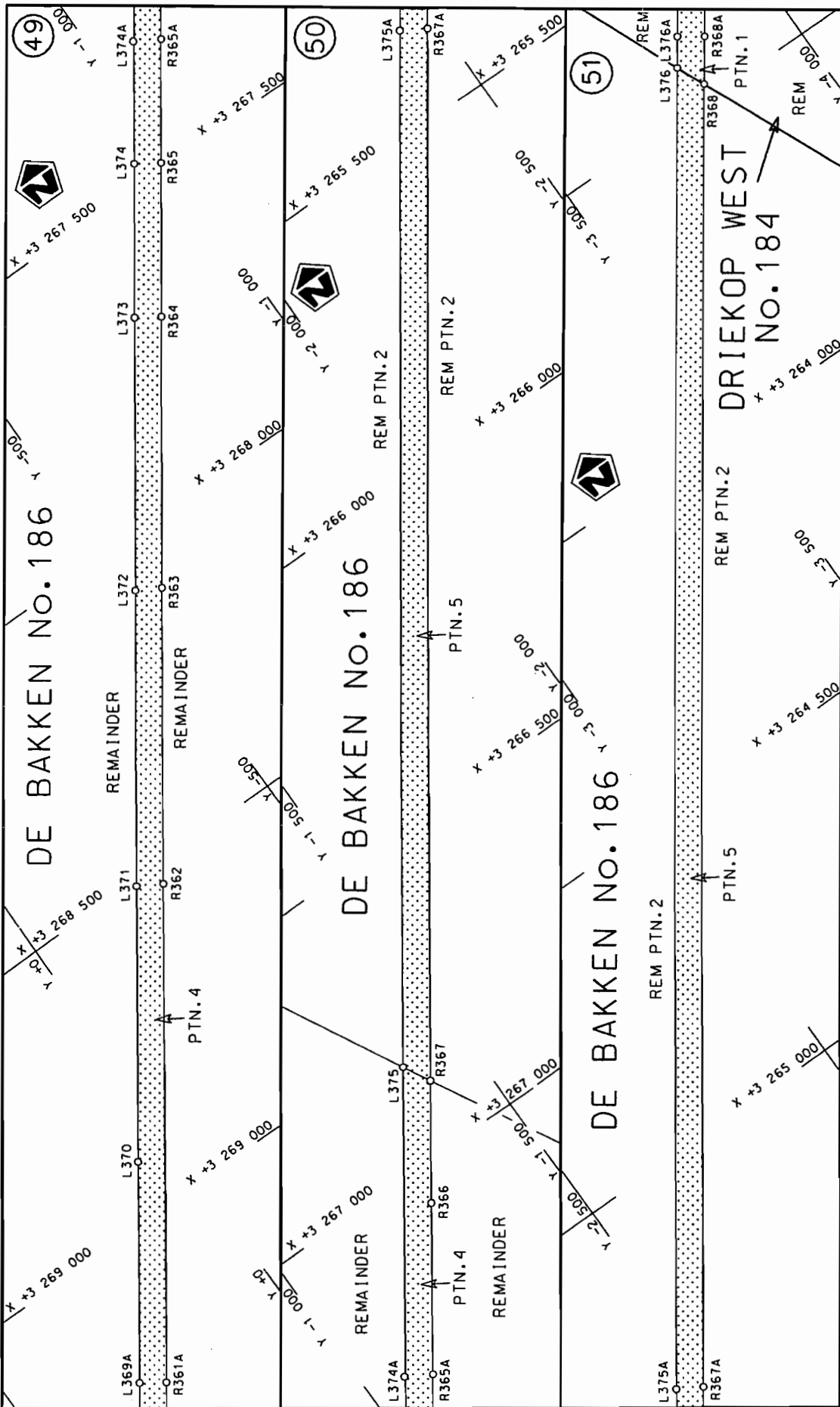
<p>Die Suid Afrikaanse Nasionale Padagentskap Beperk The South African National Roads Agency Limited</p>	<p>Die figuur getoon The figure shown</p>		<p>stel die padreserwe voor van 'n gedeelte represents the road reserve of a portion van Nasionale Roete R27 Seksie Section of National Route 10</p>	<p>Vel Sheet 14 van of 30 Plan P707/08</p>
--	---	--	--	--




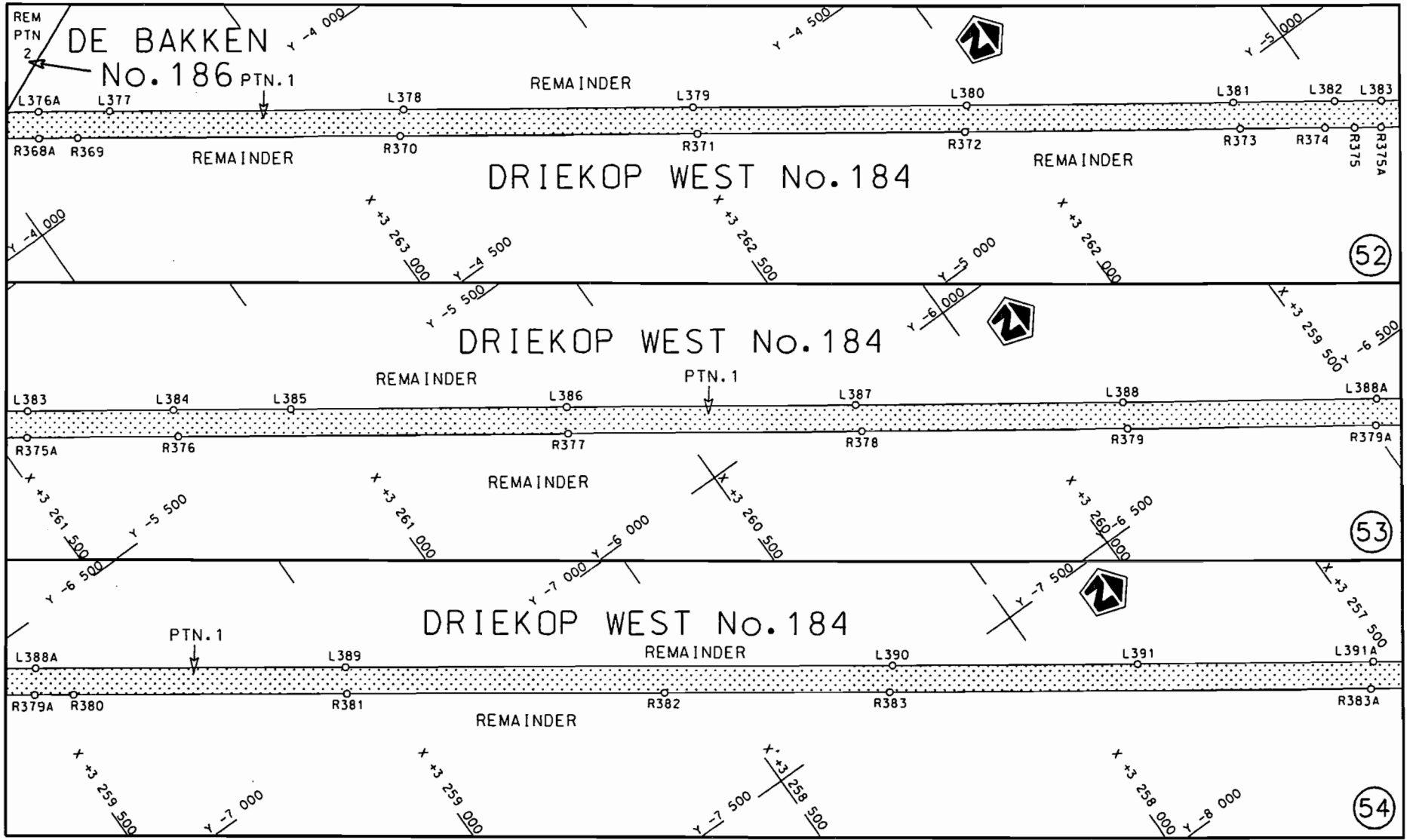
<p>Die Suid Afrikaanse Nasionale Padagentskap Beperk The South African National Roads Agency Limited</p>	<p>Die figuur getoon The figure shown</p>	<p>steeldie podreserwe voor 'n gedeelte represents the road reserve of a portion van Nasionale Roete R27 of National Route Section</p>
<p>Vel Sheet 15 of 30</p>	<p>R27</p>	<p>Plan P707/08</p>



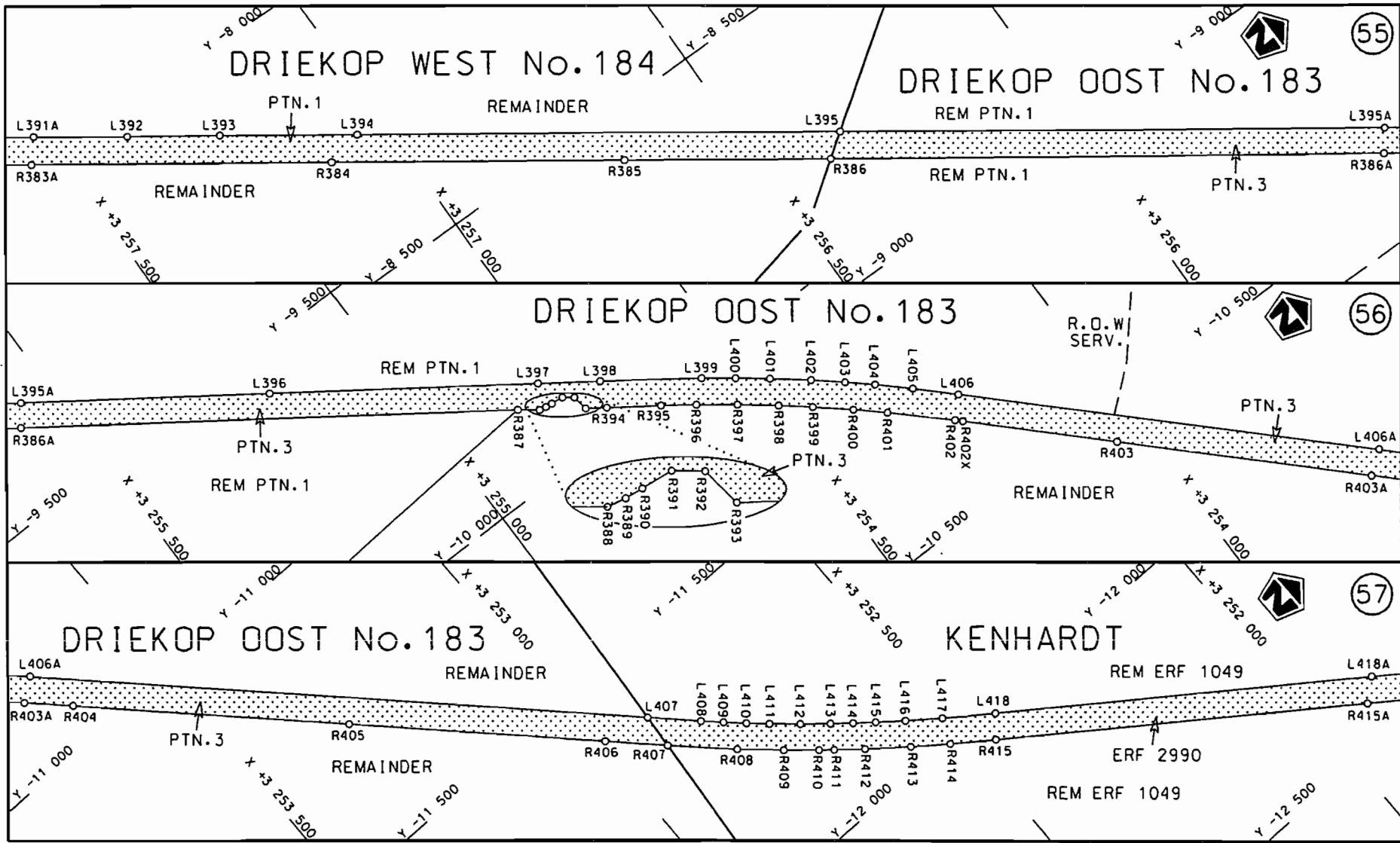
Vel Sheet 16 of 30 Plan P707/08	steldie podreserwe voor van 'n gedeelte represents the road reserve of a portion van Nasionale Roete R27 Seksie Section of National Route	Die figuur getoon The figure shown	Die Suid Afrikaanse Nasionale Padagentskap Beperk The South African National Roads Agency Limited
------------------------------------	---	------------------------------------	---

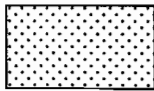


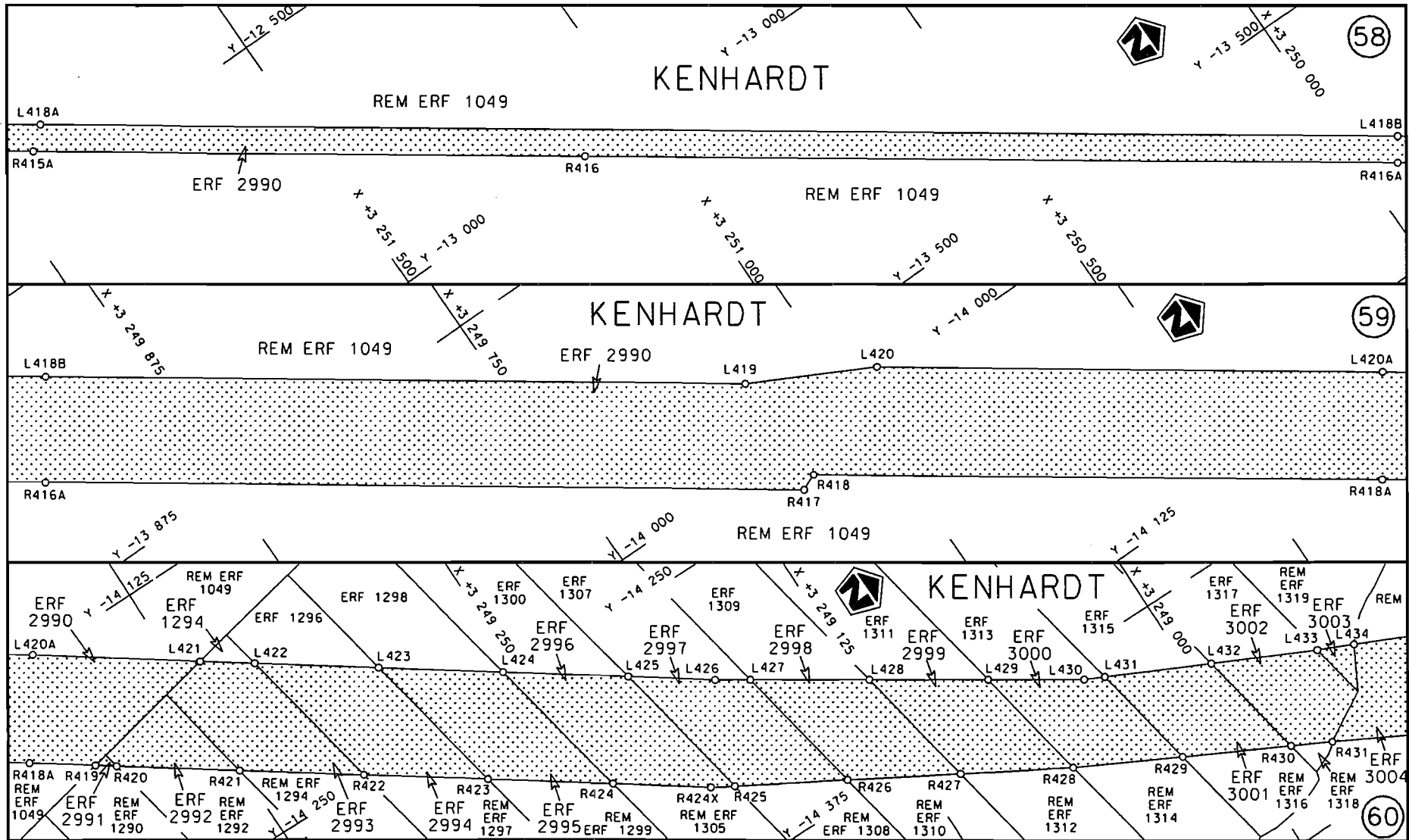
<p>Die Suid Afrikaanse Nasionale Padagentskap Beperk The South African National Roads Agency Limited</p>	<p>Die figuur getoon The figure shown</p> 	<p>stodie padreserwe voor van 'n gedeelte represents the road reserve of a portion van Nasionale Roete R27 Seksie 10 of National Route Section</p>	<p>Vel 17 van 30 Sheet of 30 Plan P707/08</p>
--	---	--	---

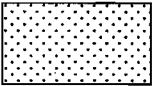


<p>Die Suid Afrikaanse Nasionale Padagentskap Beperk The South African National Roads Agency Limited</p>	<p>Die figuur getoon The figure shown</p>		<p>stel die padreserwe voor van 'n gedeelte represents the road reserve of a portion van Nasionale Roete R27 Sektie 10 of National Route R27 Section 10</p>	<p>Vel Sheet 18 van of 30</p>
				<p>Plan P707/08</p>



Die Suid Afrikaanse Nasionale Padagentskap Beperk The South African National Roads Agency Limited	Die figuur getoon The figure shown		steldie padreserwe voor van 'n gedeelte represents the road reserve of a portion van Nasionale Roete R27 Sektie of National Route Section 10	Vel Sheet 19 of 30
				Plan P707/08



<p>Die Suid Afrikaanse Nasionale Padagentskap Beperk The South African National Roads Agency Limited</p>	<p>Die figuur getoon The figure shown</p>	 <p>steldie podreserwe voor van 'n gedeelte represents the road reserve of a portion van Nasionale Roete R27 Seksie of National Route R27 Section 10</p>	<p>Vel Sheet 20 van of 30</p>
			<p>Plan P707/08</p>

PADRESERWE KOÖRDINATE / ROAD RESERVE CO-ORDINATES						
LINKERKANT/LEFT HAND SIDE			REGTERKANT/RIGHT HAND SIDE			
	Y	X	WG 21°		Y	X
L1	50 069.640	3 371	733.340	R1	50 052.780	3 371 729.770
L2	50 127.820	3 371	458.180	R2	50 111.010	3 371 454.610
L3	50 133.480	3 371	459.380	R3	50 101.400	3 371 452.580
L4	50 136.770	3 371	442.590	R4	50 139.400	3 371 274.780
L5	50 170.440	3 371	279.970	R5	50 149.680	3 371 215.080
L6	50 180.880	3 371	219.380	R6	50 157.830	3 371 155.760
L7	50 189.210	3 371	159.100	R7	50 163.950	3 371 095.470
L8	50 195.330	3 371	098.520	R8	50 167.860	3 371 035.430
L9	50 199.370	3 371	034.030	R9	50 169.720	3 370 974.850
L10	50 199.600	3 371	027.920	R10	50 169.540	3 370 914.290
L11	50 201.210	3 370	975.330	R11	50 167.220	3 370 853.880
L12	50 201.190	3 370	961.500	R12	50 162.750	3 370 793.750
L13	50 200.940	3 370	913.170	R13	50 156.220	3 370 733.730
L14	50 198.570	3 370	851.580	R14	50 147.700	3 370 674.190
L15	50 193.840	3 370	789.220	R15	50 136.830	3 370 614.780
L16	50 187.270	3 370	728.500	R16	50 124.000	3 370 555.050
L17	50 178.880	3 370	669.510	R17	50 108.490	3 370 494.360
L18	50 167.490	3 370	607.650	R18	50 086.310	3 370 413.290
L19	50 154.510	3 370	547.160	R19	49 836.890	3 369 502.040
L20	50 138.990	3 370	486.310	R20	49 818.360	3 369 434.430
L21	50 105.440	3 370	363.240	R21	49 675.010	3 368 910.290
L22	50 003.130	3 369	989.630	R22	49 586.200	3 368 585.720
L23	49 996.760	3 369	966.200	R23	49 449.250	3 368 085.740
L24	49 864.320	3 369	482.840	R24	49 385.540	3 367 852.900
L25	49 845.520	3 369	414.260	R25	49 313.060	3 367 587.880
L26	49 708.170	3 368	912.100	R26	49 264.370	3 367 409.870
L27	49 616.790	3 368	578.360	R27	49 130.580	3 366 921.210
L28	49 416.190	3 367	845.290	R28	48 999.120	3 366 440.550
L29	49 344.240	3 367	582.440	R29	48 864.330	3 365 948.120
L30	49 293.050	3 367	395.470	R30	48 781.650	3 365 645.870
L31	49 160.500	3 366	911.600	R31	48 693.180	3 365 322.550
L32	49 030.260	3 366	435.490	R32	48 422.700	3 364 333.440
L33	48 893.250	3 365	934.820	R33	48 344.990	3 364 049.240
L34	48 810.610	3 365	632.710	R34	48 241.480	3 363 670.890
L35	48 720.440	3 365	303.530	R35	48 106.620	3 363 178.500
L36	48 581.380	3 364	794.750	R36	48 051.520	3 362 977.090
L37	48 490.400	3 364	462.090	R37	47 979.000	3 362 712.020
L38	48 454.670	3 364	331.430	R38	47 846.560	3 362 228.290
L39	48 377.890	3 364	050.620	R39	47 736.010	3 361 823.940
L40	48 274.930	3 363	674.850	R40	47 604.820	3 361 344.450
L41	48 269.700	3 363	655.680	R41	47 540.380	3 361 119.380
L42	48 137.160	3 363	171.810	R42	47 486.730	3 360 944.940
L43	48 080.210	3 362	963.280	R43	47 334.220	3 360 462.310
L44	48 008.320	3 362	700.070	R44	47 253.030	3 360 205.640
L45	47 877.070	3 362	220.810	R45	47 101.120	3 359 725.000
L46	47 765.640	3 361	813.620	R46	46 950.480	3 359 247.950
L47	47 681.120	3 361	504.630	R47	46 798.630	3 358 767.720
L48	47 634.980	3 361	336.030	R48	46 654.620	3 358 311.460
L49	47 571.100	3 361	112.230	R49	46 555.180	3 357 996.980
L50	47 516.820	3 360	935.610	R50	46 408.150	3 357 531.220
L51	47 367.670	3 360	463.750	R51	46 265.890	3 357 081.200

Vel	22	Van	30	P707/08
Sheet		of		

PADRESERWE KOÖRDINATE / ROAD RESERVE CO-ORDINATES						
LINKERKANT/LEFT HAND SIDE				REGTERKANT/RIGHT HAND SIDE		
	Y	X	WG 21°		Y	X
L52	47 359.470	3 360	437.670	R52	46 134.300	3 356 665.320
L53	47 284.970	3 360	201.940	R53	45 997.480	3 356 231.980
L54	46 981.010	3 359	240.430	R54	45 833.750	3 355 713.690
L55	46 688.380	3 358	313.990	R55	45 743.940	3 355 429.260
L56	46 588.970	3 357	999.110	R56	45 551.670	3 354 821.130
L57	46 583.700	3 357	982.560	R57	45 432.070	3 354 442.690
L58	46 442.590	3 357	535.770	R58	45 284.300	3 353 975.080
L59	46 297.900	3 357	078.120	R59	45 166.100	3 353 600.650
L60	46 164.620	3 356	656.070	R60	45 005.530	3 353 092.740
L61	46 027.110	3 356	221.180	R61	44 931.500	3 352 858.520
L62	45 863.740	3 355	704.150	R62	44 859.360	3 352 630.260
L63	45 768.150	3 355	401.520	R63	44 731.640	3 352 225.880
L64	45 606.560	3 354	890.440	R64	44 572.730	3 351 723.190
L65	45 543.190	3 354	689.880	R65	44 429.370	3 351 269.150
L66	45 459.500	3 354	425.020	R66	44 319.210	3 350 920.500
L67	45 315.200	3 353	967.830	R67	44 160.190	3 350 417.530
L68	45 199.640	3 353	602.280	R68	43 904.330	3 349 607.700
L69	44 964.370	3 352	857.600	R69	43 754.940	3 349 135.050
L70	44 889.600	3 352	620.920	R70	43 596.910	3 348 635.180
L71	44 761.200	3 352	214.950	R71	43 455.130	3 348 186.360
L72	44 612.620	3 351	744.810	R72	43 302.740	3 347 704.970
L73	44 600.360	3 351	706.350	R73	43 256.850	3 347 558.980
L74	44 460.260	3 351	262.670	R74	43 105.060	3 347 078.450
L75	44 353.030	3 350	922.990	R75	42 985.550	3 346 700.540
L76	44 190.450	3 350	408.800	R76	42 853.880	3 346 283.940
L77	44 048.710	3 349	960.180	R77	42 710.560	3 345 829.710
L78	43 784.090	3 349	123.030	R78	42 689.670	3 345 763.650
L79	43 630.710	3 348	637.520	R79	42 561.330	3 345 357.420
L80	43 330.510	3 347	687.670	R80	42 409.000	3 344 875.670
L81	43 289.490	3 347	557.760	R81	42 261.430	3 344 408.230
L82	43 137.360	3 347	076.320	R82	42 094.470	3 343 879.860
L83	43 038.190	3 346	762.010	R83	41 939.370	3 343 388.720
L84	43 022.170	3 346	711.260	R84	41 892.370	3 343 240.420
L85	42 884.550	3 346	275.460	R85	41 732.580	3 342 734.620
L86	42 741.130	3 345	822.120	R86	41 580.290	3 342 252.650
L87	42 725.200	3 345	772.010	R87	41 279.390	3 341 300.070
L88	42 596.190	3 345	363.220	R88	41 131.350	3 340 831.520
L89	42 437.080	3 344	859.760	R89	41 096.930	3 340 722.380
L90	42 119.290	3 343	853.610	R90	40 939.870	3 340 225.470
L91	41 969.810	3 343	380.500	R91	40 694.670	3 339 449.170
L92	41 920.630	3 343	225.170	R92	40 572.320	3 339 063.560
L92X	41 934.590	3 343	217.290	R93	39 999.970	3 337 250.920
L93	41 934.400	3 343	216.650	R94	39 947.800	3 337 085.860
L94	41 920.450	3 343	172.050	R95	39 733.700	3 336 408.430
L95	41 918.160	3 343	165.140	R96	39 680.700	3 336 240.490
L96	41 775.450	3 342	713.600	R97	39 587.500	3 335 950.460
L97	41 325.530	3 341	289.600	R98	39 403.840	3 335 405.970
L98	41 144.380	3 340	716.490	R99	39 356.140	3 335 264.420
L99	40 983.170	3 340	206.100	R100	39 269.460	3 335 008.790
L100	40 890.810	3 339	913.470	R101	39 143.070	3 334 635.110
L101	40 746.920	3 339	458.080	R102	39 043.710	3 334 340.600

Vel	23	Van	30	P707/08
Sheet		of		

PADRESERWE KOÖRDINATE / ROAD RESERVE CO-ORDINATES					
LINKERKANT/LEFT HAND SIDE			REGTERKANT/RIGHT HAND SIDE		
	Y	X	WG 21°	Y	X
L102	40 633.130	3 339 098.810	R103	39 026.490	3 334 289.810
L103	40 627.470	3 339 080.140	R104	39 017.920	3 334 264.530
L104	40 621.700	3 339 061.700	R105	38 897.180	3 333 907.730
L105	40 488.110	3 338 639.120	R106	38 888.490	3 333 882.320
L106	40 186.850	3 337 685.550	R107	38 810.960	3 333 652.920
L107	40 048.460	3 337 247.340	R108	38 660.430	3 333 207.570
L108	39 998.060	3 337 088.110	R109	38 580.070	3 333 003.810
L109	39 897.480	3 336 770.350	R110	38 544.100	3 332 912.340
L110	39 780.710	3 336 400.570	R111	38 475.560	3 332 710.690
L111	39 724.830	3 336 225.650	R112	38 406.930	3 332 506.420
L112	39 632.450	3 335 935.950	R113	38 371.850	3 332 403.010
L113	39 519.680	3 335 601.600	R114	38 349.310	3 332 338.030
L114	39 450.380	3 335 396.300	R115	38 330.420	3 332 286.860
L115	39 415.560	3 335 293.460	R116	38 315.950	3 332 248.600
L116	39 311.710	3 334 986.570	R117	38 308.560	3 332 228.690
L117	39 184.230	3 334 609.440	R118	38 289.380	3 332 177.200
L118	39 084.410	3 334 314.250	R119	38 275.100	3 332 138.890
L119	38 941.620	3 333 891.630	R119X	38 271.320	3 332 129.250
L120	38 939.320	3 333 884.420	R120	38 234.710	3 332 036.070
L121	38 854.230	3 333 633.450	R121	38 219.550	3 331 998.150
L122	38 705.230	3 333 192.660	R122	38 204.300	3 331 959.980
L123	38 620.690	3 332 975.060	R123	38 188.750	3 331 921.870
L124	38 590.850	3 332 898.610	R124	38 178.060	3 331 896.360
L125	38 581.070	3 332 873.210	R125	38 151.140	3 331 832.260
L126	38 515.880	3 332 681.970	R126	38 102.700	3 331 719.180
L127	38 445.490	3 332 477.470	R127	38 097.120	3 331 706.480
L128	38 396.650	3 332 332.740	R128	38 085.690	3 331 681.010
L129	38 375.450	3 332 273.350	R129	38 023.640	3 331 544.470
L130	38 362.040	3 332 236.650	R130	37 841.810	3 331 145.020
L131	38 344.190	3 332 188.450	R131	37 629.610	3 330 679.220
L132	38 319.960	3 332 124.350	R132	37 433.250	3 330 247.760
L133	38 301.560	3 332 076.830	R133	37 229.790	3 329 800.960
L134	38 286.870	3 332 038.910	R134	37 013.770	3 329 327.000
L135	38 276.810	3 332 013.270	R135	36 939.410	3 329 163.640
L136	38 266.590	3 331 987.630	R136	36 921.650	3 329 124.340
L137	38 256.360	3 331 962.180	R137	36 910.350	3 329 099.300
L138	38 246.120	3 331 936.890	R138	36 870.660	3 329 011.870
L139	38 235.630	3 331 911.250	R139	36 796.810	3 328 849.690
L140	38 225.170	3 331 886.070	R140	36 706.040	3 328 650.990
L141	38 209.560	3 331 848.670	R141	36 512.710	3 328 227.300
L142	38 198.710	3 331 822.970	R142	36 102.860	3 327 326.780
L143	38 182.790	3 331 785.530	R143	35 904.480	3 326 890.540
L144	38 171.960	3 331 760.250	R144	35 684.450	3 326 406.890
L145	38 166.410	3 331 747.660	R145	35 467.350	3 325 930.960
L146	38 138.520	3 331 683.900	R146	35 337.110	3 325 644.550
L147	38 115.930	3 331 633.300	R147	35 115.290	3 325 157.460
L148	38 104.470	3 331 608.000	R148	34 980.130	3 324 860.880
L149	38 064.830	3 331 520.750	R149	34 838.250	3 324 548.670
L150	37 883.380	3 331 122.200	R150	34 793.200	3 324 449.780
L151	37 673.240	3 330 661.130	R151	34 636.150	3 324 104.450
L152	37 473.010	3 330 221.220	R152	34 490.750	3 323 784.380

Vel
Sheet

24

Van
of

30

P707/08

PADRESERWE KOÖRDINATE / ROAD RESERVE CO-ORDINATES						
LINKERKANT/LEFT HAND SIDE				REGTERKANT/RIGHT HAND SIDE		
	Y	X	WG 21°		Y	X
L153	37 274.700	3 329 785.960		R153	34 305.080	3 323 376.930
L154	37 060.010	3 329 314.660		R154	34 193.320	3 323 131.180
L155	36 979.980	3 329 139.010		R155	33 982.390	3 322 669.060
L156	36 837.450	3 328 825.580		R156	33 782.580	3 322 230.930
L157	36 746.800	3 328 626.430		R157	33 569.620	3 321 763.360
L158	36 558.770	3 328 213.610		R158	33 152.230	3 320 847.500
L159	36 351.880	3 327 759.030		R159	32 731.540	3 319 923.910
L160	36 144.040	3 327 303.130		R160	32 532.230	3 319 486.450
L161	35 939.970	3 326 854.720		R161	32 311.870	3 319 002.450
L162	35 724.470	3 326 381.300		R162	31 884.770	3 318 064.980
L163	35 511.750	3 325 914.390		R163	31 163.320	3 316 480.870
L164	35 375.940	3 325 615.650		R164	31 055.480	3 316 244.220
L165	35 156.440	3 325 133.590		R165	30 845.120	3 315 782.220
L166	35 025.800	3 324 846.540		R166	30 637.430	3 315 326.380
L167	34 883.180	3 324 533.010		R167	30 315.460	3 314 619.430
L168	34 832.440	3 324 421.540		R168	30 217.420	3 314 404.170
L169	34 677.970	3 324 082.610		R169	29 791.050	3 313 468.440
L170	34 535.810	3 323 769.920		R170	29 619.810	3 313 092.770
L171	34 362.630	3 323 389.860		R171	29 420.160	3 312 654.530
L172	33 827.210	3 322 214.560		R172	29 212.020	3 312 197.990
L173	33 612.960	3 321 744.500		R173	28 988.830	3 311 708.110
L174	33 196.700	3 320 830.680		R173X	28 977.400	3 311 682.950
L175	32 993.950	3 320 386.020		R174	28 932.100	3 311 582.880
L176	32 776.240	3 319 907.770		R175	28 738.970	3 311 157.850
L177	32 570.760	3 319 456.590		R176	28 527.440	3 310 694.880
L178	32 355.150	3 318 983.840		R177	28 447.860	3 310 519.700
L179	32 133.340	3 318 496.330		R178	28 390.870	3 310 394.870
L180	31 923.710	3 318 036.280		R179	28 369.060	3 310 347.190
L181	31 741.280	3 317 635.550		R180	28 346.200	3 310 296.930
L182	31 512.850	3 317 134.400		R181	28 329.170	3 310 259.610
L183	31 407.310	3 316 902.990		R182	28 306.450	3 310 209.580
L184	31 201.680	3 316 451.330		R183	28 272.240	3 310 134.210
L185	31 100.440	3 316 229.060		R184	28 220.800	3 310 021.630
L186	30 887.040	3 315 760.440		R185	28 198.040	3 309 971.860
L187	30 685.600	3 315 318.400		R186	28 180.760	3 309 934.470
L188	30 486.890	3 314 882.130		R187	28 163.250	3 309 897.150
L189	30 344.020	3 314 568.670		R188	28 122.150	3 309 810.770
L190	30 275.950	3 314 419.320		R189	28 028.990	3 309 626.270
L191	30 025.600	3 313 868.690		R190	27 817.820	3 309 208.450
L192	29 843.910	3 313 470.540		R191	27 579.200	3 308 736.400
L193	29 670.590	3 313 089.450		R192	27 378.020	3 308 339.100
L194	29 459.270	3 312 626.050		R193	27 370.020	3 308 333.050
L195	29 066.570	3 311 764.240		R194	27 363.440	3 308 324.960
L196	28 975.880	3 311 565.010		R195	27 351.180	3 308 319.380
L197	28 782.870	3 311 141.470		R196	27 351.400	3 308 306.750
L198	28 549.310	3 310 628.850		R197	27 349.960	3 308 283.220
L199	28 492.400	3 310 503.780		R198	27 346.330	3 308 275.590
L200	28 393.610	3 310 287.190		R199	27 254.620	3 308 094.290
L201	28 359.450	3 310 212.120		R200	27 161.890	3 307 910.800
L202	28 342.470	3 310 174.850		R201	26 943.100	3 307 478.500
L203	28 319.560	3 310 124.390		R202	26 865.750	3 307 325.220

Vel	25	Van	30	P707/08
Sheet		of		

PADRESERWE KOÖRDINATE / ROAD RESERVE CO-ORDINATES											
LINKERKANT/LEFT HAND SIDE						REGTERKANT/RIGHT HAND SIDE					
	Y		X	WG 21°		Y		X			
L204	28	296.770	3	310	074.340	R203	26	763.850	3	307	123.540
L205	28	291.200	3	310	061.870	R204	26	323.940	3	306	253.390
L206	28	285.530	3	310	049.380	R205	26	120.160	3	305	850.200
L207	28	279.840	3	310	036.850	R206	25	889.330	3	305	393.660
L208	28	274.030	3	310	024.170	R207	25	669.200	3	304	958.490
L209	28	262.560	3	309	999.260	R208	25	448.890	3	304	522.640
L209X	28	256.770	3	309	986.570	R209	25	223.440	3	304	076.760
L210	28	233.990	3	309	937.560	R210	24	989.520	3	303	613.820
L211	28	228.140	3	309	924.740	R211	24	874.020	3	303	385.920
L212	28	222.430	3	309	912.180	R212	24	683.440	3	303	008.560
L213	28	204.900	3	309	874.790	R213	24	674.070	3	302	990.210
L214	28	181.640	3	309	825.190	R214	24	669.010	3	302	980.440
L215	28	175.730	3	309	812.720	R215	24	646.980	3	302	937.150
L216	28	169.560	3	309	800.350	R216	24	427.460	3	302	502.920
L217	28	157.310	3	309	775.860	R217	24	199.300	3	302	051.170
L218	28	069.000	3	309	600.540	R218	23	979.070	3	301	615.690
L219	27	860.310	3	309	187.740	R219	23	758.710	3	301	179.810
L220	27	621.620	3	308	715.510	R219X	23	744.440	3	301	151.890
L221	27	404.710	3	308	286.500	R220	23	695.270	3	301	054.340
L222	27	379.860	3	308	237.290	R221	23	475.890	3	300	620.330
L223	27	372.790	3	308	223.060	R222	23	263.920	3	300	201.070
L224	27	369.980	3	308	217.800	R223	23	020.130	3	299	719.130
L225	27	292.690	3	308	064.200	R224	22	907.500	3	299	496.250
L226	27	199.420	3	307	880.760	R225	22	892.470	3	299	466.680
L227	26	997.100	3	307	479.760	R226	22	685.470	3	299	056.870
L228	26	909.090	3	307	306.030	R227	22	668.960	3	299	024.140
L229	26	799.730	3	307	089.980	R228	22	647.080	3	298	980.490
L230	26	690.850	3	306	874.540	R229	22	619.830	3	298	926.290
L231	26	652.360	3	306	798.290	R230	22	581.590	3	298	851.140
L232	26	553.330	3	306	602.510	R231	22	559.720	3	298	806.860
L233	26	163.010	3	305	830.450	R232	22	548.830	3	298	785.300
L234	25	933.690	3	305	377.000	R233	22	537.870	3	298	764.250
L235	25	713.260	3	304	941.020	R234	22	532.180	3	298	752.640
L236	24	908.400	3	303	349.560	R235	22	527.180	3	298	742.060
L237	24	897.710	3	303	327.790	R236	22	526.130	3	298	730.130
L238	24	693.550	3	302	923.850	R237	22	525.180	3	298	717.940
L239	24	474.170	3	302	490.030	R238	22	522.880	3	298	706.120
L240	23	805.350	3	301	166.840	R239	22	519.380	3	298	694.330
L240X	23	799.520	3	301	155.770	R240	22	515.100	3	298	682.560
L241	23	749.840	3	301	057.520	R241	22	508.800	3	298	672.390
L241X	23	744.230	3	301	046.740	R242	22	502.960	3	298	665.790
L242	23	711.940	3	300	982.250	R243	22	485.870	3	298	658.040
L243	23	695.190	3	300	949.700	R244	22	469.520	3	298	626.160
L244	23	513.530	3	300	590.030	R245	22	435.840	3	298	560.660
L245	23	337.250	3	300	241.590	R246	22	322.580	3	298	345.390
L246	23	326.400	3	300	219.820	R247	22	315.470	3	298	331.510
L247	23	304.420	3	300	176.130	R248	22	194.910	3	298	084.250
L248	23	061.950	3	299	696.950	R249	22	178.400	3	298	050.140
L249	22	938.860	3	299	453.270	R250	22	158.490	3	298	009.210
L250	22	933.470	3	299	442.680	R251	22	153.670	3	297	999.830
L251	22	710.390	3	299	001.350	R252	22	144.670	3	297	982.020

Vel	26	Van	30	P707/08
Sheet		of		

PADRESERWE KOÖRDINATE / ROAD RESERVE CO-ORDINATES									
LINKERKANT/LEFT HAND SIDE					REGTERKANT/RIGHT HAND SIDE				
	Y	X	WG 21°		Y	X			
L252	22 705.100	3 298 991.230		R253	22 122.140	3 297 939.230			
L253	22 699.680	3 298 980.180		R254	22 093.480	3 297 884.890			
L254	22 563.060	3 298 710.080		R255	22 081.400	3 297 861.760			
L255	22 552.160	3 298 688.260		R256	22 034.500	3 297 768.940			
L256	22 480.890	3 298 547.050		R257	22 037.890	3 297 750.410			
L257	22 469.940	3 298 525.340		R258	22 013.190	3 297 726.730			
L258	22 453.350	3 298 492.670		R259	21 996.940	3 297 694.400			
L259	22 370.690	3 298 329.130		R260	21 988.530	3 297 677.550			
L260	22 244.150	3 298 078.870		R261	21 971.460	3 297 645.230			
L261	22 101.310	3 297 796.080		R262	21 972.630	3 297 635.420			
L262	22 073.580	3 297 741.470		R263	21 948.190	3 297 602.380			
L263	22 057.130	3 297 708.960		R264	21 936.190	3 297 581.460			
L264	22 040.750	3 297 676.650		R265	21 923.680	3 297 559.880			
L265	22 018.400	3 297 632.720		R266	21 911.830	3 297 540.250			
L266	22 006.920	3 297 611.170		R267	21 891.940	3 297 507.740			
L267	22 001.200	3 297 600.630		R267X	21 872.660	3 297 476.900			
L268	21 995.330	3 297 590.050		R268	21 865.990	3 297 466.510			
L269	21 983.550	3 297 568.790		R269	21 838.720	3 297 425.910			
L270	21 965.470	3 297 537.320		R270	21 825.000	3 297 405.890			
L271	21 946.690	3 297 505.950		R271	21 811.350	3 297 386.870			
L272	21 933.650	3 297 484.830		R272	21 796.350	3 297 366.130			
L273	21 920.880	3 297 464.420		R273	21 774.590	3 297 337.080			
L274	21 914.360	3 297 454.270		R274	21 767.350	3 297 327.480			
L275	21 888.010	3 297 414.130		R275	21 752.470	3 297 308.240			
L276	21 880.840	3 297 403.450		R276	21 737.320	3 297 289.290			
L277	21 868.350	3 297 385.440		R277	21 714.380	3 297 261.170			
L278	21 853.180	3 297 363.900		R278	21 706.580	3 297 251.840			
L279	21 839.210	3 297 344.360		R279	21 690.840	3 297 233.120			
L280	21 831.930	3 297 334.410		R280	21 667.020	3 297 205.570			
L281	21 809.970	3 297 305.210		R281	21 642.490	3 297 178.230			
L282	21 787.850	3 297 276.240		R282	21 634.370	3 297 169.410			
L283	21 772.450	3 297 257.150		R283	21 584.180	3 297 115.450			
L284	21 757.030	3 297 238.220		R284	21 097.000	3 296 593.810			
L285	21 741.820	3 297 219.770		R285	20 736.090	3 296 207.490			
L286	21 725.660	3 297 200.960		R286	20 383.710	3 295 830.160			
L287	21 701.800	3 297 173.240		R287	20 215.350	3 295 649.800			
L288	21 685.290	3 297 155.050		R288	20 065.100	3 295 488.860			
L289	21 660.340	3 297 127.790		R289	19 727.810	3 295 127.830			
L290	21 644.060	3 297 110.230		R290	19 362.420	3 294 736.610			
L291	21 602.380	3 297 065.600		R291	19 118.410	3 294 475.270			
L292	21 427.570	3 296 878.540		R292	18 812.970	3 294 148.310			
L293	21 118.230	3 296 547.320		R293	18 438.360	3 293 747.080			
L294	21 099.990	3 296 527.790		R294	18 138.550	3 293 426.290			
L295	20 771.560	3 296 176.220		R295	17 846.160	3 293 112.970			
L296	20 416.980	3 295 796.490		R296	17 817.910	3 293 082.770			
L297	20 271.420	3 295 640.650		R297	16 642.850	3 291 824.490			
L298	20 101.330	3 295 458.570		R298	16 428.640	3 291 595.100			
L299	19 753.830	3 295 086.430		R299	16 121.110	3 291 265.850			
L300	19 397.420	3 294 704.890		R300	15 764.690	3 290 884.180			
L301	19 153.300	3 294 443.380		R301	15 435.980	3 290 532.370			
L302	18 848.480	3 294 116.900		R302	15 163.410	3 290 240.420			
				Vel	27	Van	30	P707/08	
				Sheet		of			

PADRESERWE KOÖRDINATE / ROAD RESERVE CO-ORDINATES									
LINKERKANT/LEFT HAND SIDE					REGTERKANT/RIGHT HAND SIDE				
	Y	X	WG 21°		Y	X			
L303	18 472.720	3 293	714.660	R303	14 850.360	3 289	905.180		
L304	17 834.970	3 293	031.810	R303X	14 845.730	3 289	900.230		
L305	17 495.310	3 292	668.030	R304	14 780.290	3 289	830.170		
L306	16 738.260	3 291	857.400	R305	14 743.180	3 289	790.310		
L307	16 462.420	3 291	562.020	R306	14 715.120	3 289	760.330		
L308	16 156.890	3 291	234.490	R307	14 684.390	3 289	724.980		
L309	15 810.700	3 290	863.270	R308	14 647.200	3 289	682.430		
L310	15 473.500	3 290	502.310	R309	14 633.320	3 289	666.630		
L311	15 210.750	3 290	220.770	R310	14 598.020	3 289	626.370		
L312	15 179.400	3 290	186.860	R311	14 514.680	3 289	518.970		
L313	15 164.180	3 290	171.050	R312	14 479.870	3 289	474.310		
L314	14 893.580	3 289	881.230	R313	14 448.190	3 289	429.570		
L315	14 884.010	3 289	870.960	R314	14 394.540	3 289	353.210		
L316	14 788.090	3 289	768.220	R314X	14 390.530	3 289	347.470		
L317	14 739.790	3 289	716.850	R315	14 132.580	3 288	980.770		
L318	14 727.230	3 289	703.890	R316	14 032.310	3 288	838.280		
L319	14 717.820	3 289	693.580	R317	13 202.940	3 287	659.310		
L320	14 690.730	3 289	662.620	R318	12 918.870	3 287	255.980		
L321	14 664.120	3 289	631.450	R319	12 627.430	3 286	841.390		
L322	14 646.610	3 289	610.250	R320	12 611.390	3 286	819.080		
L323	14 628.890	3 289	589.560	R321	12 483.910	3 286	637.510		
L324	14 620.070	3 289	578.900	R322	12 208.420	3 286	245.780		
L325	14 585.960	3 289	535.990	R323	11 931.800	3 285	852.580		
L326	14 577.500	3 289	525.140	R324	11 640.320	3 285	438.110		
L327	14 552.610	3 289	492.320	R325	11 610.720	3 285	396.040		
L328	14 527.840	3 289	459.250	R326	11 076.950	3 284	637.320		
L329	14 507.030	3 289	430.920	R327	10 501.100	3 283	818.990		
L330	14 430.550	3 289	322.300	R328	10 224.700	3 283	426.130		
L331	14 177.120	3 288	961.980	R329	9 957.150	3 283	045.420		
L332	14 074.860	3 288	816.900	R330	9 666.450	3 282	632.260		
L333	13 794.150	3 288	417.620	R331	9 382.480	3 282	228.810		
L334	13 510.910	3 288	015.030	R332	9 366.500	3 282	206.520		
L335	12 646.550	3 286	786.040	R333	9 309.970	3 282	125.590		
L336	12 524.850	3 286	613.370	R334	8 559.980	3 281	059.880		
L337	12 241.150	3 286	209.960	R335	8 244.210	3 280	610.940		
L338	11 646.360	3 285	364.640	R336	7 968.300	3 280	218.290		
L339	11 403.450	3 285	019.400	R337	7 707.730	3 279	847.700		
L340	9 403.470	3 282	176.290	R338	7 431.600	3 279	455.240		
L341	9 344.240	3 282	092.150	R339	7 148.230	3 279	052.280		
L342	9 162.890	3 281	834.580	R340	7 126.020	3 279	054.890		
L343	8 856.290	3 281	398.900	R341	7 120.630	3 279	013.210		
L344	8 832.280	3 281	364.420	R342	6 538.410	3 278	185.380		
L345	8 602.340	3 281	037.610	R343	6 246.940	3 277	770.970		
L346	8 287.330	3 280	589.780	R344	5 988.320	3 277	403.430		
L347	7 163.970	3 278	992.520	R345	5 707.210	3 277	003.470		
L348	7 158.230	3 278	932.720	R346	5 544.000	3 276	771.530		
L349	7 120.480	3 278	930.750	R347	4 325.860	3 275	040.290		
L350	6 999.960	3 278	759.570	R348	4 303.400	3 275	034.870		
L351	6 699.640	3 278	332.630	R349	4 309.990	3 275	017.750		
L352	6 569.260	3 278	147.540	R350	4 014.280	3 274	597.050		
L353	6 282.480	3 277	739.400	R351	3 730.260	3 274	193.430		

Vel	28	Van	30	P707/08
Sheet		of		

PADRESERWE KOÖRDINATE / ROAD RESERVE CO-ORDINATES					
LINKERKANT/LEFT HAND SIDE			REGTERKANT/RIGHT HAND SIDE		
	Y	X	WG 21°	Y	X
L354	6 022.860	3 277 370.510		R352	3 156.300 3 273 377.340
L355	5 722.210	3 276 943.150		R353	2 886.690 3 272 994.190
L356	5 583.080	3 276 745.290		R354	2 616.210 3 272 609.560
L357	5 205.880	3 276 209.230		R355	2 048.350 3 271 802.430
L358	4 939.020	3 275 829.780		R356	1 875.010 3 271 556.000
L359	4 639.580	3 275 403.770		R357	1 868.630 3 271 546.670
L360	4 049.040	3 274 564.310		R358	1 699.570 3 271 306.830
L361	3 772.630	3 274 171.480		R359	1 171.170 3 270 555.530
L362	2 079.480	3 271 764.630		R360	855.380 3 270 106.790
L363	1 961.460	3 271 596.750		R361	583.150 3 269 719.580
L364	1 951.810	3 271 582.630		R362	-251.110 3 268 533.630
L365	1 739.310	3 271 280.900		R363	-551.560 3 268 106.440
L366	1 433.490	3 270 846.010		R364	-828.030 3 267 713.430
L367	1 203.190	3 270 518.610		R365	-983.840 3 267 492.240
L368	904.140	3 270 093.240		R366	-1 284.520 3 267 064.660
L369	621.580	3 269 691.890		R367	-1 410.440 3 266 885.680
L370	69.970	3 268 907.470		R368	-3 809.400 3 263 475.110
L371	- 210.190	3 268 509.720		R369	-3 898.050 3 263 349.080
L372	- 510.400	3 268 083.060		R370	-4 228.700 3 262 878.900
L373	- 788.500	3 267 687.590		R371	-4 531.120 3 262 448.950
L374	- 944.240	3 267 466.220		R372	-4 805.220 3 262 059.020
L375	-1 385.560	3 266 838.830		R373	-5 088.100 3 261 656.770
L376	-3 787.400	3 263 424.280		R374	-5 174.780 3 261 533.400
L377	-3 892.580	3 263 274.740		R375	-5 205.370 3 261 490.490
L378	-4 193.730	3 262 846.680		R376	-5 387.740 3 261 231.050
L379	-4 488.270	3 262 427.880		R377	-5 785.160 3 260 665.880
L380	-4 768.660	3 262 029.010		R378	-6 084.730 3 260 239.110
L381	-5 042.900	3 261 639.200		R379	-6 357.310 3 259 852.280
L382	-5 146.490	3 261 491.650		R380	-6 651.200 3 259 434.510
L383	-5 194.420	3 261 423.770		R381	-6 930.250 3 259 037.480
L384	-5 344.340	3 261 210.550		R382	-7 254.220 3 258 577.130
L385	-5 463.590	3 261 041.120		R383	-7 484.450 3 258 249.860
L386	-5 745.320	3 260 640.410		R384	-8 283.240 3 257 114.080
L387	-6 040.420	3 260 220.940		R385	-8 579.770 3 256 692.290
L388	-6 314.190	3 259 831.540		R386	-8 791.200 3 256 391.370
L389	-6 890.560	3 259 012.100		R387	-9 864.140 3 254 865.800
L390	-7 448.610	3 258 218.510		R388	-9 887.510 3 254 832.420
L391	-7 699.120	3 257 862.360		R389	-9 890.110 3 254 820.310
L392	-8 035.540	3 257 384.280		R390	-9 891.680 3 254 808.240
L393	-8 130.400	3 257 248.790		R391	-9 894.130 3 254 786.860
L394	-8 270.520	3 257 049.910		R392	-9 906.980 3 254 770.320
L395	-8 762.540	3 256 350.300		R393	-9 934.210 3 254 766.300
L396	-9 575.200	3 255 194.750		R394	-9 955.630 3 254 736.080
L397	-9 848.480	3 254 806.100		R395	-10 011.260 3 254 656.710
L398	-9 911.420	3 254 716.750		R396	-10 048.220 3 254 605.290
L399	-10 016.320	3 254 569.450		R397	-10 091.920 3 254 546.860
L400	-10 052.810	3 254 521.020		R398	-10 137.280 3 254 489.780
L401	-10 090.170	3 254 473.060		R399	-10 176.000 3 254 443.140
L402	-10 136.440	3 254 416.540		R400	-10 223.780 3 254 387.960
L403	-10 176.240	3 254 370.370		R401	-10 264.660 3 254 342.900
L404	-10 211.770	3 254 330.170		R402	-10 348.190 3 254 254.490

Vel	29	Van	30	P707/08
Sheet		of		

PADRESERWE KOÖRDINATE / ROAD RESERVE CO-ORDINATES											
LINKERKANT/LEFT HAND SIDE					REGTERKANT/RIGHT HAND SIDE						
	Y		X	WG 21°		Y		X			
L405	-10	258.290	3	254	280.480	R402X	-10	357.910	3	254	244.750
L406	-10	315.350	3	254	222.120	R403	-10	551.580	3	254	048.340
L407	-11	615.310	3	252	903.670	R404	-10	933.650	3	253	661.000
L408	-11	682.430	3	252	835.460	R405	-11	279.910	3	253	310.170
L409	-11	710.420	3	252	806.200	R406	-11	597.680	3	252	988.330
L410	-11	738.140	3	252	776.370	R407	-11	676.260	3	252	908.690
L411	-11	765.530	3	252	746.180	R408	-11	762.110	3	252	819.000
L412	-11	801.480	3	252	705.230	R409	-11	817.060	3	252	757.740
L413	-11	836.250	3	252	663.800	R410	-11	858.060	3	252	710.180
L414	-11	861.980	3	252	632.570	R411	-11	875.580	3	252	689.190
L415	-11	887.080	3	252	601.100	R412	-11	910.450	3	252	646.380
L416	-11	919.930	3	252	558.720	R413	-11	960.870	3	252	581.490
L417	-11	959.540	3	252	505.550	R414	-12	002.730	3	252	524.470
L418	-12	014.470	3	252	427.860	R415	-12	050.160	3	252	457.580
L419	-13	966.980	3	249	660.980	R416	-12	995.950	3	251	117.090
L420	-13	994.250	3	249	608.650	R417	-14	020.370	3	249	666.110
L421	-14	166.620	3	249	364.760	R418	-14	017.320	3	249	658.830
L422	-14	180.640	3	249	344.800	R419	-14	179.420	3	249	428.710
L423	-14	212.230	3	249	299.940	R420	-14	184.830	3	249	421.020
L424	-14	243.830	3	249	255.080	R421	-14	216.420	3	249	376.170
L425	-14	275.420	3	249	210.240	R422	-14	248.010	3	249	331.310
L426	-14	297.510	3	249	178.880	R423	-14	279.600	3	249	286.460
L427	-14	306.040	3	249	165.550	R424	-14	311.190	3	249	241.600
L428	-14	334.890	3	249	121.270	R424X	-14	336.040	3	249	206.310
L429	-14	363.600	3	249	076.960	R425	-14	341.380	3	249	197.030
L430	-14	386.890	3	249	041.150	R426	-14	366.430	3	249	153.460
L431	-14	390.830	3	249	032.940	R427	-14	391.490	3	249	109.940
L432	-14	411.640	3	248	990.290	R428	-14	416.540	3	249	066.370
L433	-14	432.470	3	248	947.590	R429	-14	438.880	3	249	023.350
L434	-14	439.250	3	248	932.600	R430	-14	461.210	3	248	980.370
L435	-14	502.810	3	248	792.020	R431	-14	469.690	3	248	964.030
L436	-14	545.190	3	248	660.430	R432	-14	531.020	3	248	845.870
L437	-14	540.240	3	248	657.740	R433	-14	566.910	3	248	738.670
L438	-14	545.240	3	248	638.060	R434	-14	589.310	3	248	660.570
L439	-14	574.260	3	248	518.920	R435	-14	589.080	3	248	655.880
L440	-14	583.980	3	248	479.670	R436	-14	606.460	3	248	587.880
L441	-14	603.080	3	248	400.690	R437	-14	606.540	3	248	585.510
L442	-14	615.130	3	248	403.610	R438	-14	632.020	3	248	480.890
L443	-14	827.200	3	247	531.940	R438X	-14	634.230	3	248	470.270
						R439	-14	648.930	3	248	411.800
						R440	-14	636.270	3	248	408.740
						R441	-14	847.610	3	247	536.890

Vel	30	Van	30	P707/08
Sheet		of		