

# Government Gazette

Staatskoerant

REPUBLIC OF SOUTH AFRICA  
REPUBLIEK VAN SUID-AFRIKA

Vol. 544

Pretoria, 22 October 2010  
Oktober

**No. 33640**

**IMPORTANT NOTICE**

The Government Printing Works will not be held responsible for faxed documents not received due to errors on the fax machine or faxes received which are unclear or incomplete. Please be advised that an "OK" slip, received from a fax machine, will not be accepted as proof that documents were received by the GPW for printing. If documents are faxed to the GPW it will be the sender's responsibility to phone and confirm that the documents were received in good order.

Furthermore the Government Printing Works will also not be held responsible for cancellations and amendments which have not been done on original documents received from clients.

**CONTENTS****INHOUD**

<i>No.</i>	<i>Page No.</i>	<i>Gazette No.</i>	<i>No.</i>	<i>Bladsy No.</i>	<i>Koerant No.</i>
<b>GOVERNMENT NOTICE</b>			<b>GOEWERMENSKENNISGEWING</b>		
<b>Transport, Department of</b>			<b>Vervoer, Departement van</b>		
<i>Government Notice</i>			<i>Goewermentskennisgewing</i>		
914			914		
South African National Roads Agency Limited and the National Roads Act (7/1998): The South African National Roads Agency Limited: Declaration amendment of National Road R33 Section 5: Amendment of Declaration No. 174 of 2007 .....	3	33640	Suid-Afrikaanse Nasionale Padagentskap Beperk en die Nasionale Paaie Wet (7/1998): Die Suid-Afrikaanse Nasionale Padagentskap Beperk: Verklaring wysiging van Nasionale Pad R33 Seksie 5: Wysiging van Verklaring No. 174 van 2007 .....	4	33640

---

## GOVERNMENT NOTICE

---

### DEPARTMENT OF TRANSPORT

No. 914

22 October 2010

## THE SOUTH AFRICAN NATIONAL ROADS AGENCY LIMITED

Registration No: 98/09584/06

---

### DECLARATION AMENDMENT OF NATIONAL ROAD R33 SECTION 5

AMENDMENT OF DECLARATION No. 174 OF 2007

By virtue of section 40(1)(b) of the South African National Roads Agency Limited and the National Roads Act, 1998 (Act No. 7 of 1998), I hereby amend Declaration No. 174 of 2007 by substituting Annexure paragraphs (VIII) and (IX) the section of the descriptive declaration of the route from the KwaZulu-Natal/Mpumalanga provincial border up to Piet Retief, with the subjoined sheets 1 to 9 of Plan No. P747/09.

**(National Road R33 Section 5: KwaZulu-Natal/Mpumalanga Provincial Border – Piet Retief)**

---

MINISTER OF TRANSPORT

---

## GOEWERMENTSKENNISGEWING

---

### DEPARTEMENT VAN VERVOER

No. 914

22 Oktober 2010

## DIE SUID-AFRIKAANSE NASIONALE PADAGENTSKAP BEPERK

Registrasie No: 98/09584/06

---

### VERKLARING WYSIGING VAN NASIONALE PAD R33 SEKSIE 5.

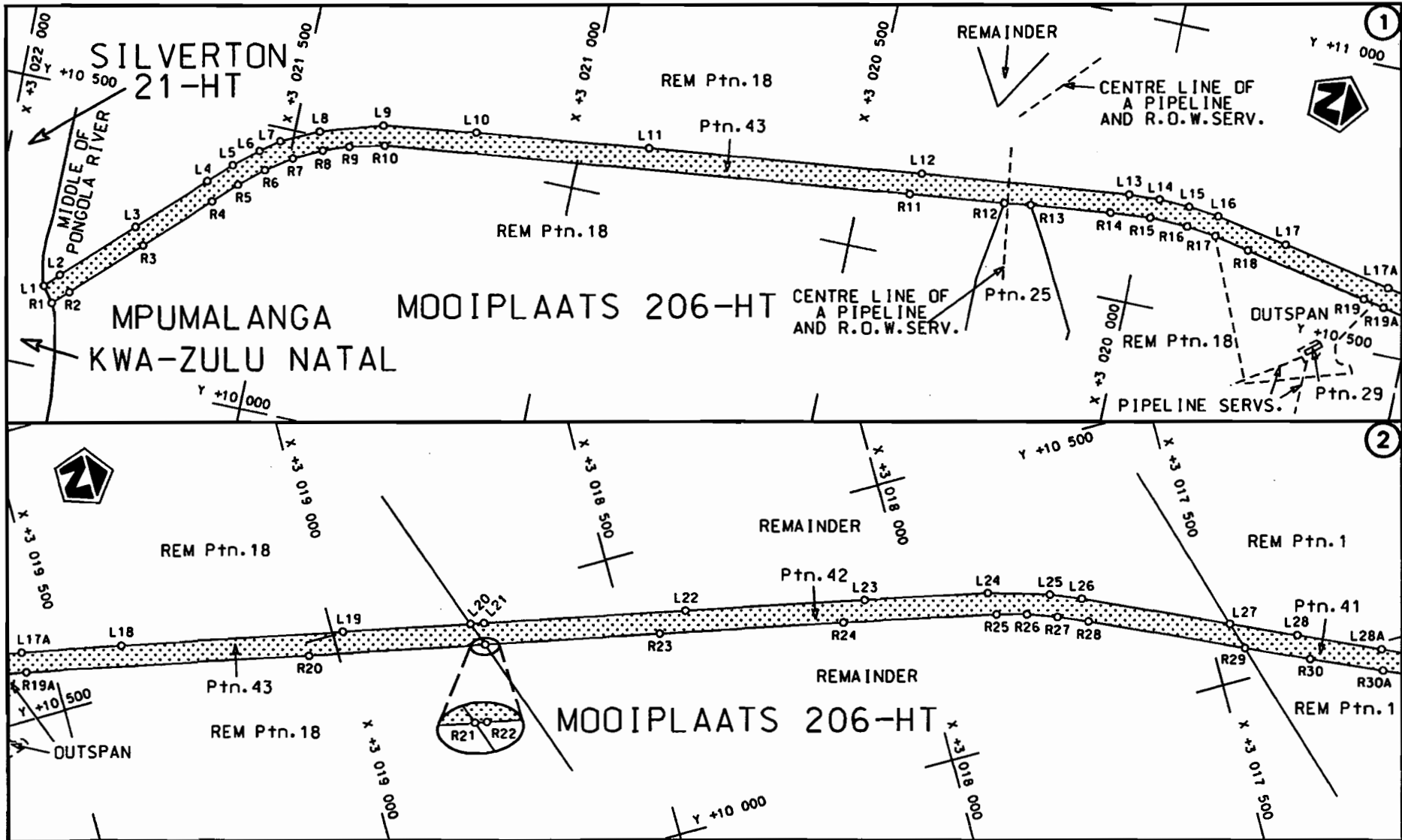
WYSIGING VAN VERKLARING NO. 174 VAN 2007.

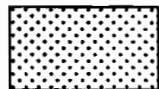
Kragtens Artikel 40(1)(b) van die Suid-Afrikaanse Nasionale Padagentskap Beperk en die Nasionale Paaie Wet, 1998 (Wet no.7 van 1998), wysig ek hiermee Verklaring no. 174 van 2007 deur Bylae paragrawe (VIII) en (IX) die gedeelte van die beskrywende verklaring van die roete vanaf die KwaZulu-Natal/Mpumalanga provinsiale grens tot by Piet Retief, te vervang met meegaande velle 1 tot 9 van Plan no. P747/09.

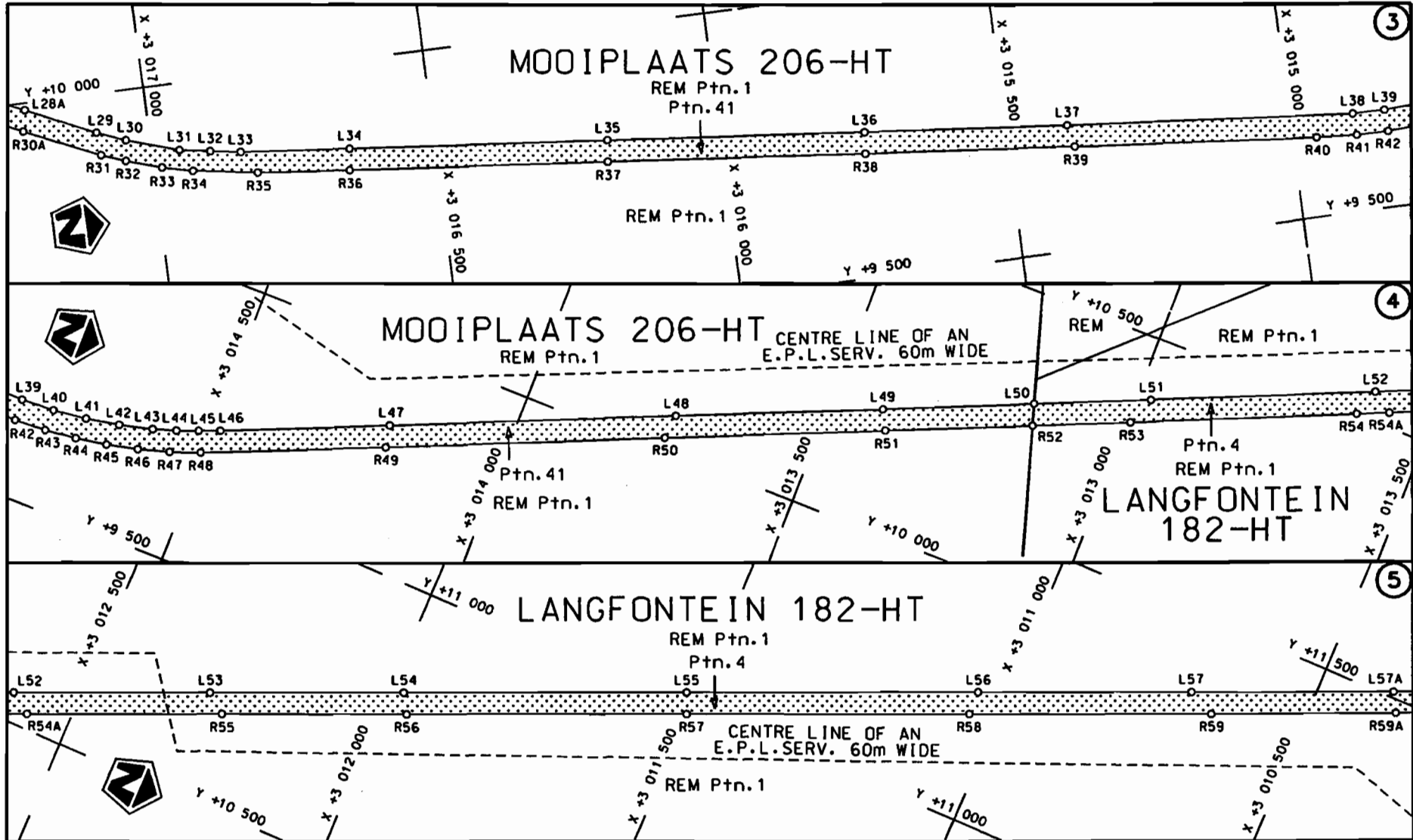
**(Nasionale Pad R33 Seksie 5: KwaZulu-Natal/Mpumalanga Provinsiale Grens – Piet Retief)**

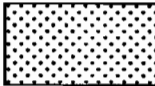


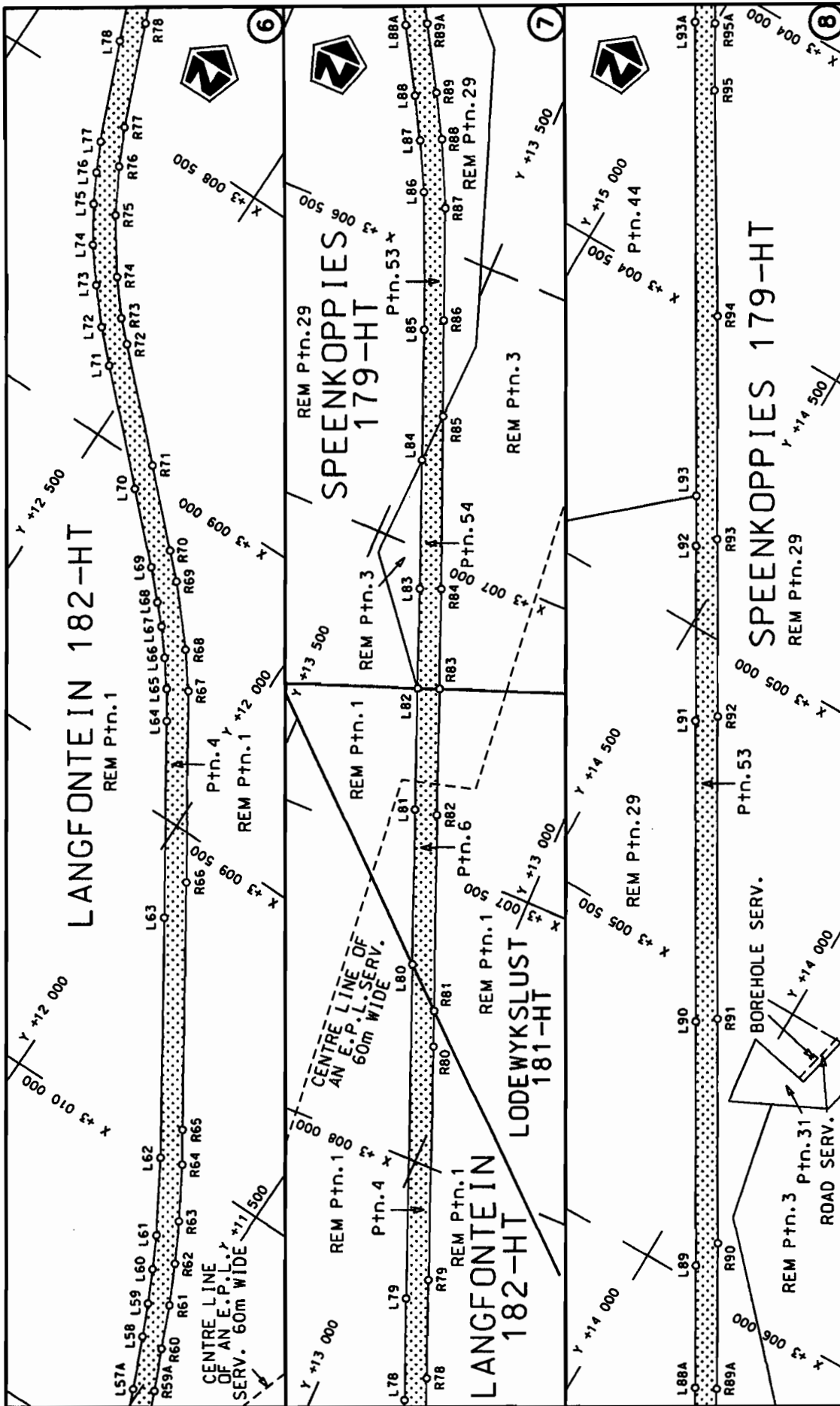
**MINISTER VAN VERVOER**



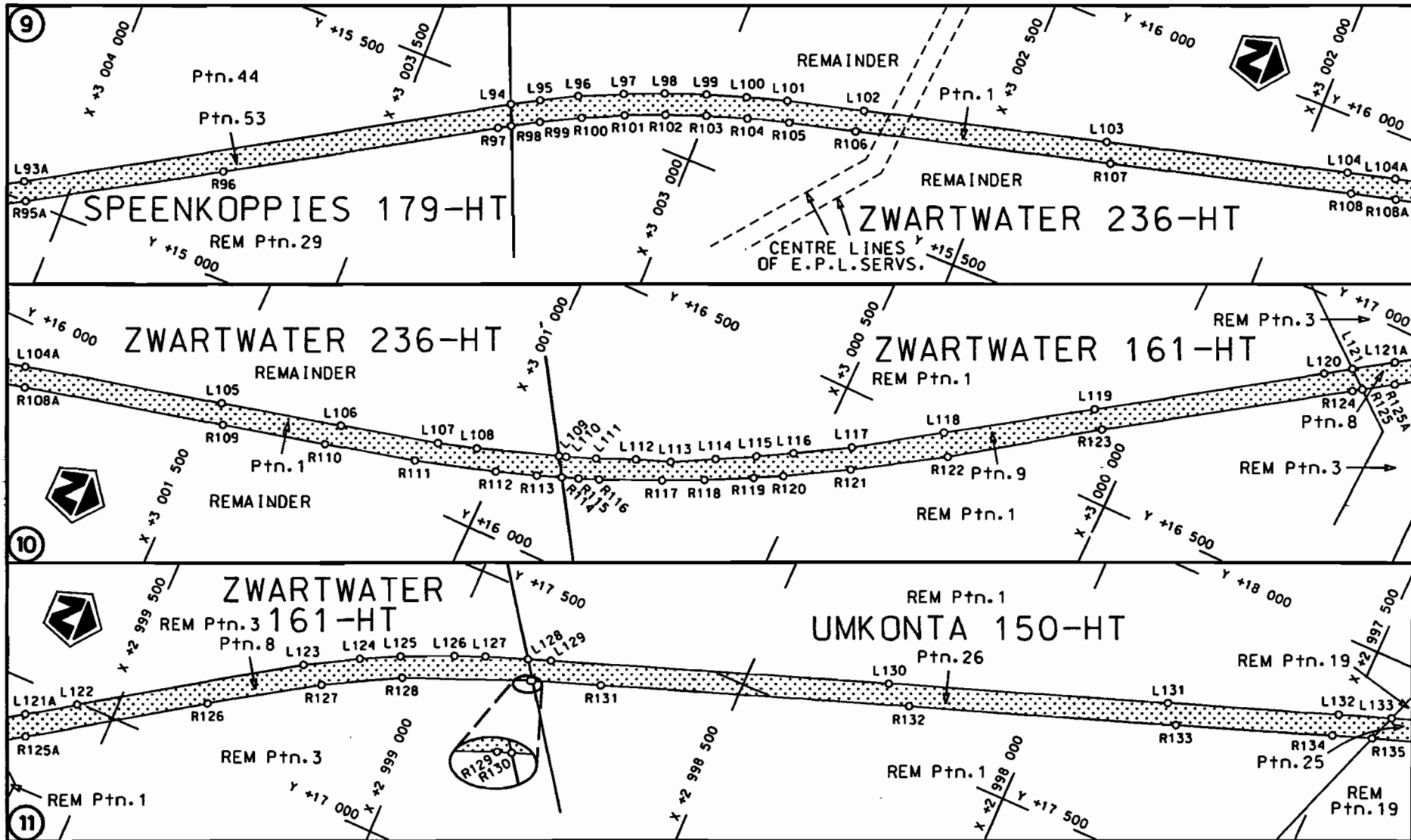
Die Suid Afrikaanse Nasionale Padagentskap Beperk The South African National Roads Agency Limited	Die figuur getoon The figure shown		steldie padreserwe voor van 'n gedeelte represents the road reserve of a portion van Nasionale Roete R33 of National Route R33	Vel Sheet 1 van 9 of 9
			Sektie Section 5	Plan P747/09



<p>Die Suid Afrikaanse Nasionale Padagentskap Beperk The South African National Roads Agency Limited</p>	<p>Die figuur getoon The figure shown</p>		<p>steldie padreserwe voor van 'n gedeelte represents the road reserve of a portion van Nasionale Roete R33 Sektie of National Route R33 Section</p>	<p>Vel Sheet 2 van 9 Plan P747/09</p>
--------------------------------------------------------------------------------------------------------------	-----------------------------------------------	--------------------------------------------------------------------------------------	------------------------------------------------------------------------------------------------------------------------------------------------------------------	-------------------------------------------

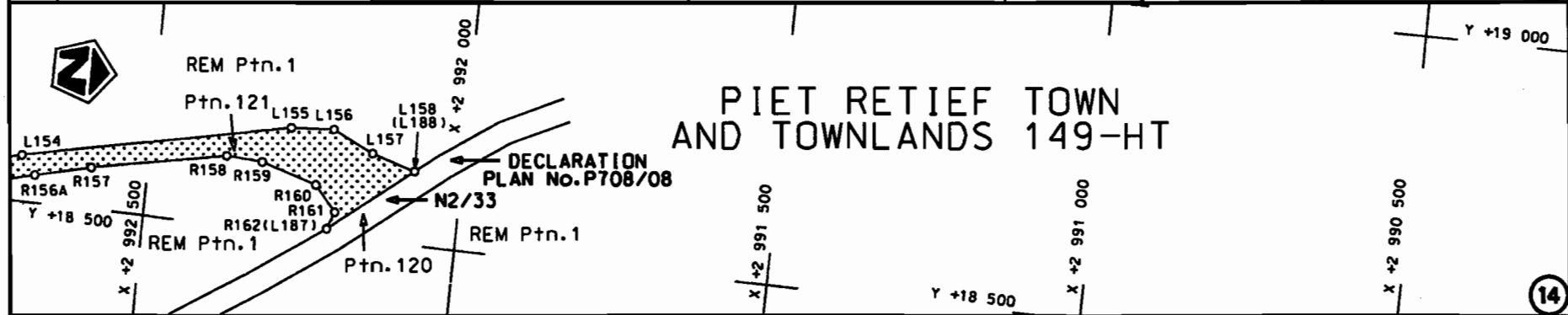
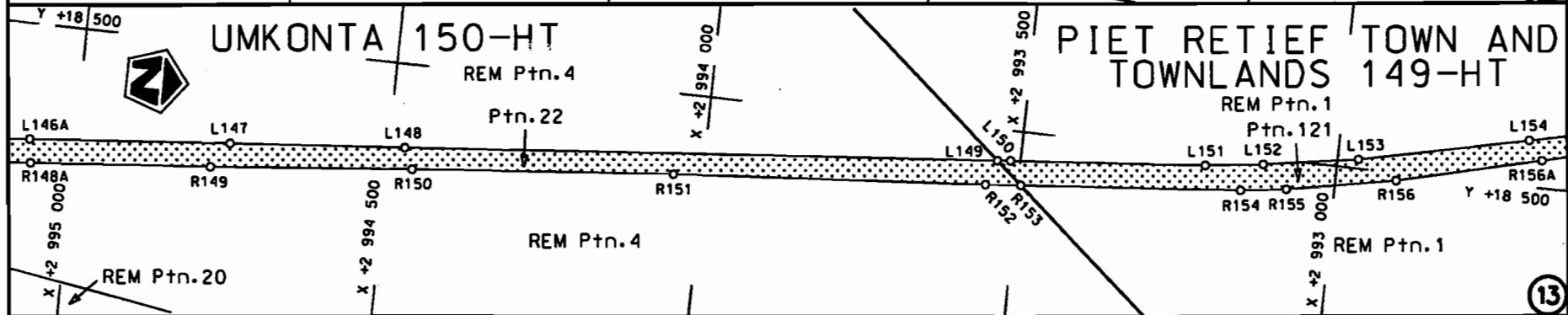
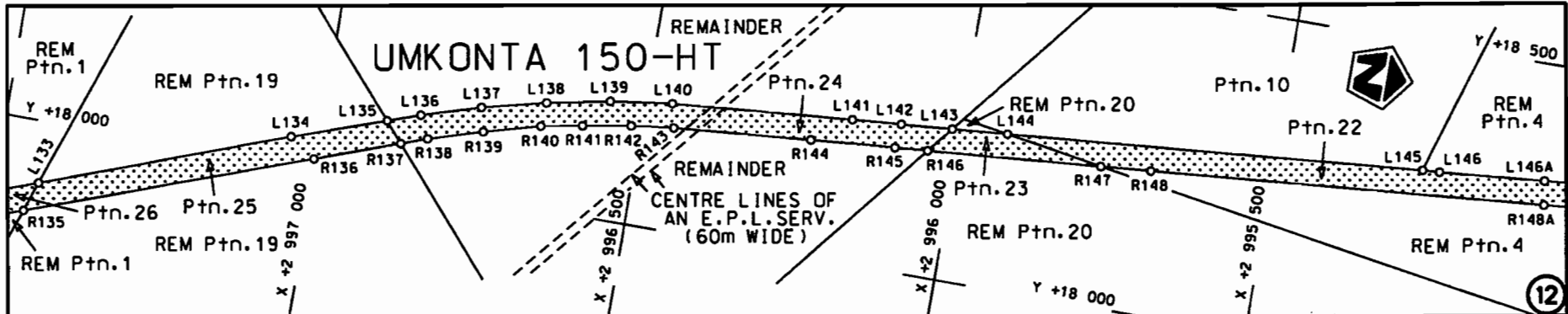



<p>Die Suid Afrikaanse Nasionale Padogentskap Beperk The South African National Roads Agency Limited</p>	<p>Die figuur getoon The figure shown</p>	<p>steldie podreserwe voor van 'n gedeelte represents the road reserve of a portion van Nasionale Roete R33 Sektie of National Route R33 Section</p>	<p>Vel Sheet 3 of 9</p>	<p>Plan P747/09</p>	<p>5</p>
--------------------------------------------------------------------------------------------------------------	-----------------------------------------------	------------------------------------------------------------------------------------------------------------------------------------------------------------------	-----------------------------	---------------------	----------



<p>Die Suid Afrikaanse Nasionale Padogenskap Beperk The South African National Roads Agency Limited</p>	<p>Die figuur getoon The figure shown</p>		<p>steldie padreserwe voor van 'n gedeelte represents the road reserve of a portion van Nasionale Roete R33 of National Route R33</p> <p>Seksie Section</p> <p>5</p>	<p>Vel Sheet 4 van 9 of</p> <p>Plan P747/09</p>
-------------------------------------------------------------------------------------------------------------	-----------------------------------------------	--	--------------------------------------------------------------------------------------------------------------------------------------------------------------------------------------	-------------------------------------------------------------





<p>Die Suid Afrikaanse Nasionale Padagentskap Beperk The South African National Roads Agency Limited</p>	<p>Die figuur getoon The figure shown</p>		<p>steldie podreserwe voor van 'n gedeelte represents the road reserve of a portion van Nasionale Roete R33 Sektie 5 of National Route R33 Section 5</p>	<p>Vel Sheet 5 van 9 Plan P747/09</p>
--------------------------------------------------------------------------------------------------------------	-----------------------------------------------	---------------------------------------------------------------------------------------	----------------------------------------------------------------------------------------------------------------------------------------------------------------------	-------------------------------------------

PADRESERWE KOÖRDINATE				/	ROAD RESERVE CO-ORDINATES			
LINKERKANT/LEFT HAND SIDE					REGTERKANT/RIGHT HAND SIDE			
	Y	X	WG	31°	Y	X		
L1	10 141.731	3 021 888.266		R1	10 115.035	3 021 868.493		
L2	10 166.220	3 021 863.680		R2	10 139.500	3 021 840.950		
L3	10 276.200	3 021 747.860		R3	10 247.030	3 021 728.000		
L4	10 380.720	3 021 637.490		R4	10 347.550	3 021 621.950		
L5	10 417.400	3 021 598.490		R5	10 385.260	3 021 582.250		
L6	10 451.620	3 021 556.660		R6	10 420.680	3 021 540.180		
L7	10 476.370	3 021 522.860		R7	10 451.400	3 021 494.400		
L8	10 507.730	3 021 457.050		R8	10 475.840	3 021 445.580		
L9	10 540.470	3 021 348.860		R9	10 491.440	3 021 400.820		
L10	10 560.880	3 021 185.220		R10	10 506.120	3 021 339.740		
L11	10 595.560	3 020 880.100		R11	10 609.860	3 020 411.740		
L12	10 649.590	3 020 397.930		R12	10 628.550	3 020 243.790		
L13	10 687.690	3 020 031.220		R13	10 634.090	3 020 197.080		
L14	10 689.250	3 019 976.290		R14	10 649.490	3 020 057.240		
L15	10 687.570	3 019 921.630		R15	10 654.960	3 019 986.780		
L16	10 681.810	3 019 867.270		R16	10 652.560	3 019 918.720		
L17	10 657.020	3 019 739.380		R17	10 646.710	3 019 865.280		
L18	10 582.190	3 019 372.170		R18	10 633.710	3 019 803.230		
L19	10 500.790	3 018 982.040		R19	10 590.340	3 019 585.680		
L20	10 454.440	3 018 760.160		R20	10 476.170	3 019 050.310		
L21	10 449.570	3 018 736.840		R21	10 412.870	3 018 745.300		
L22	10 376.510	3 018 385.500		R22	10 412.750	3 018 744.730		
L23	10 311.710	3 018 074.940		R23	10 349.840	3 018 441.120		
L24	10 266.340	3 017 860.980		R24	10 283.020	3 018 120.990		
L25	10 234.210	3 017 755.220		R25	10 226.110	3 017 855.480		
L26	10 212.910	3 017 702.930		R26	10 211.260	3 017 803.260		
L27	10 100.780	3 017 459.790		R27	10 192.810	3 017 752.260		
L28	10 049.640	3 017 348.890		R28	10 171.430	3 017 701.590		
L29	9 931.590	3 017 091.590		R29	10 052.890	3 017 445.190		
L30	9 911.970	3 017 042.170		R30	10 003.310	3 017 337.970		
L31	9 882.850	3 016 951.010		R31	9 891.580	3 017 088.730		
L32	9 873.110	3 016 897.400		R32	9 876.040	3 017 047.160		
L33	9 864.970	3 016 843.970		R33	9 856.390	3 016 985.490		
L34	9 845.410	3 016 651.260		R34	9 843.250	3 016 931.940		
L35	9 800.000	3 016 196.640		R35	9 825.040	3 016 819.180		
L36	9 755.300	3 015 747.010		R36	9 808.070	3 016 656.150		
L37	9 719.560	3 015 390.550		R37	9 762.660	3 016 200.970		
L38	9 671.600	3 014 887.670		R38	9 717.680	3 015 750.780		
L39	9 670.670	3 014 831.670		R39	9 680.780	3 015 381.810		
L40	9 674.030	3 014 772.610		R40	9 638.750	3 014 957.680		
L41	9 680.960	3 014 713.570		R41	9 633.450	3 014 885.610		
L42	9 692.030	3 014 655.630		R42	9 632.840	3 014 830.210		
L43	9 706.510	3 014 598.330		R43	9 635.950	3 014 774.210		
L44	9 719.530	3 014 558.490		R44	9 642.200	3 014 718.020		
L45	9 733.010	3 014 521.750		R45	9 651.700	3 014 663.830		
L46	9 747.280	3 014 485.840		R46	9 664.280	3 014 609.780		
L47	9 866.450	3 014 207.760		R47	9 680.230	3 014 556.340		
L48	10 064.960	3 013 745.180		R48	9 698.680	3 014 504.580		
L49	10 208.160	3 013 410.010		R49	9 827.710	3 014 200.490		
L50	10 313.850	3 013 165.380		R50	10 021.810	3 013 749.200		
L51	10 395.200	3 012 975.270		R51	10 174.720	3 013 392.620		

Vel 6 Van 9  
Sheet of

P747/09

PADRESERWE KOÖRDINATE				/	ROAD RESERVE CO-ORDINATES			
LINKERKANT/LEFT HAND SIDE					REGTERKANT/RIGHT HAND SIDE			
	Y	X	WG	31°	Y	X		
L52	10 550.840	3 012 611.020		R52	10 276.910	3 013 154.090		
L53	10 687.350	3 012 292.600		R53	10 345.500	3 012 994.010		
L54	10 823.300	3 011 976.040		R54	10 502.640	3 012 627.750		
L55	11 020.020	3 011 518.650		R55	10 661.240	3 012 258.790		
L56	11 222.490	3 011 049.290		R56	10 790.230	3 011 956.620		
L57	11 370.500	3 010 702.250		R57	10 984.910	3 011 503.870		
L58	11 548.340	3 010 286.350		R58	11 181.000	3 011 048.530		
L59	11 573.240	3 010 231.760		R59	11 348.280	3 010 655.820		
L60	11 600.520	3 010 176.740		R60	11 508.450	3 010 286.460		
L61	11 628.410	3 010 123.210		R61	11 539.800	3 010 213.780		
L62	11 697.920	3 010 005.070		R62	11 573.230	3 010 147.140		
L63	11 928.780	3 009 645.950		R63	11 608.470	3 010 080.840		
L64	12 117.350	3 009 352.870		R64	11 659.630	3 009 994.060		
L65	12 148.960	3 009 308.310		R65	11 693.930	3 009 942.100		
L66	12 181.520	3 009 264.750		R66	11 930.630	3 009 572.920		
L67	12 217.040	3 009 222.300		R67	12 115.000	3 009 290.000		
L68	12 247.280	3 009 190.570		R68	12 159.080	3 009 232.040		
L69	12 291.230	3 009 144.000		R69	12 239.930	3 009 141.020		
L70	12 392.590	3 009 043.510		R70	12 280.060	3 009 100.890		
L71	12 549.070	3 008 887.720		R71	12 389.590	3 008 992.190		
L72	12 597.510	3 008 838.990		R72	12 543.690	3 008 839.270		
L73	12 646.560	3 008 782.540		R73	12 577.100	3 008 806.730		
L74	12 690.740	3 008 725.490		R74	12 623.940	3 008 750.180		
L75	12 729.600	3 008 664.530		R75	12 686.600	3 008 659.830		
L76	12 755.740	3 008 615.820		R76	12 728.230	3 008 584.880		
L77	12 779.350	3 008 566.440		R77	12 757.470	3 008 521.640		
L78	12 848.510	3 008 398.310		R78	12 828.590	3 008 346.850		
L79	12 918.020	3 008 229.020		R79	12 895.250	3 008 183.710		
L80	13 143.460	3 007 678.220		R80	13 052.450	3 007 796.160		
L81	13 246.160	3 007 427.250		R81	13 076.360	3 007 738.180		
L82	13 327.370	3 007 228.890		R82	13 207.030	3 007 421.330		
L83	13 393.290	3 007 066.080		R83	13 291.650	3 007 215.040		
L84	13 479.470	3 006 855.470		R84	13 358.530	3 007 051.980		
L85	13 566.360	3 006 643.130		R85	13 476.540	3 006 769.970		
L86	13 661.980	3 006 420.270		R86	13 541.390	3 006 614.980		
L87	13 703.620	3 006 339.770		R87	13 616.420	3 006 431.510		
L88	13 742.220	3 006 270.210		R88	13 669.260	3 006 323.170		
L89	13 917.880	3 005 972.320		R89	13 709.870	3 006 251.030		
L90	14 139.610	3 005 596.030		R90	13 905.330	3 005 919.060		
L91	14 408.500	3 005 141.190		R91	14 109.160	3 005 573.270		
L92	14 564.670	3 004 874.770		R92	14 378.740	3 005 115.200		
L93	14 609.140	3 004 797.840		R93	14 538.510	3 004 845.900		
L94	15 476.350	3 003 326.640		R94	14 736.500	3 004 508.260		
L95	15 501.490	3 003 281.220		R95	14 941.080	3 004 168.330		
L96	15 533.210	3 003 222.060		R96	15 178.490	3 003 758.370		
L97	15 565.490	3 003 149.330		R97	15 429.480	3 003 331.980		
L98	15 593.310	3 003 082.640		R98	15 440.890	3 003 311.880		
L99	15 618.960	3 003 013.420		R99	15 465.950	3 003 267.710		
L100	15 640.830	3 002 945.730		R100	15 499.820	3 003 202.180		
L101	15 660.750	3 002 876.470		R101	15 531.280	3 003 133.960		
L102	15 694.060	3 002 746.240		R102	15 558.840	3 003 067.620		

Vel 7 Van 9  
Sheet of

P747/09

PADRESERWE KOÖRDINATE				/	ROAD RESERVE CO-ORDINATES			
LINKERKANT/LEFT HAND SIDE					REGTERKANT/RIGHT HAND SIDE			
	Y	X	WG	31°	Y	X		
L103	15 800.710	3 002	327.400	R103	15 584.020	3 002	999.480	
L104	15 905.720	3 001	916.060	R104	15 606.250	3 002	930.520	
L105	16 013.920	3 001	490.840	R105	15 626.240	3 002	859.360	
L106	16 066.850	3 001	283.350	R106	15 655.100	3 002	746.520	
L107	16 111.620	3 001	111.960	R107	15 767.710	3 002	307.730	
L108	16 131.830	3 001	045.480	R108	15 873.920	3 001	896.620	
L109	16 179.570	3 000	908.880	R109	15 980.400	3 001	472.790	
L110	16 183.690	3 000	897.090	R110	16 025.460	3 001	295.490	
L111	16 202.910	3 000	848.050	R111	16 066.690	3 001	136.340	
L112	16 229.840	3 000	784.210	R112	16 108.200	3 000	997.960	
L113	16 251.570	3 000	726.620	R113	16 132.020	3 000	929.700	
L114	16 289.970	3 000	656.250	R114	16 147.560	3 000	888.580	
L115	16 323.960	3 000	593.070	R115	16 157.980	3 000	861.000	
L116	16 356.070	3 000	535.990	R116	16 171.640	3 000	827.750	
L117	16 408.360	3 000	448.360	R117	16 215.480	3 000	726.940	
L118	16 500.320	3 000	310.590	R118	16 248.240	3 000	658.960	
L119	16 649.000	3 000	086.280	R119	16 287.940	3 000	581.470	
L120	16 874.240	2 999	747.670	R120	16 312.180	3 000	535.420	
L121	16 902.270	2 999	706.100	R121	16 371.950	3 000	433.770	
L122	16 996.400	2 999	566.570	R122	16 464.540	3 000	286.570	
L123	17 221.540	2 999	226.610	R123	16 621.970	3 000	060.190	
L124	17 270.820	2 999	138.580	R124	16 867.000	2 999	689.810	
L125	17 303.910	2 999	073.190	R125	16 876.870	2 999	675.040	
L126	17 343.410	2 998	985.360	R126	17 091.040	2 999	354.490	
L127	17 363.630	2 998	934.430	R127	17 201.960	2 999	183.380	
L128	17 389.070	2 998	864.540	R128	17 270.830	2 999	055.360	
L129	17 402.930	2 998	826.460	R129	17 356.250	2 998	846.090	
L130	17 603.820	2 998	266.400	R130	17 357.690	2 998	842.110	
L131	17 769.880	2 997	802.290	R131	17 398.490	2 998	729.310	
L132	17 871.690	2 997	518.190	R132	17 581.430	2 998	217.470	
L133	17 903.440	2 997	430.810	R133	17 739.880	2 997	773.150	
L134	18 043.490	2 997	045.240	R134	17 833.510	2 997	513.210	
L135	18 094.520	2 996	898.590	R135	17 857.000	2 997	447.450	
L136	18 112.280	2 996	847.520	R136	18 015.620	2 997	003.380	
L137	18 141.360	2 996	754.330	R137	18 063.190	2 996	871.100	
L138	18 166.260	2 996	653.800	R138	18 077.720	2 996	830.710	
L139	18 186.270	2 996	554.940	R139	18 104.040	2 996	745.060	
L140	18 199.480	2 996	457.670	R140	18 128.670	2 996	656.840	
L141	18 224.220	2 996	170.530	R141	18 140.710	2 996	591.300	
L142	18 230.820	2 996	093.110	R142	18 153.560	2 996	515.770	
L143	18 237.800	2 996	012.260	R143	18 162.090	2 996	449.200	
L144	18 245.370	2 995	924.600	R144	18 181.430	2 996	230.080	
L145	18 302.480	2 995	264.800	R145	18 193.060	2 996	096.780	
L146	18 304.060	2 995	237.910	R146	18 197.490	2 996	045.050	
L147	18 346.140	2 994	752.500	R147	18 221.100	2 995	769.480	
L148	18 369.540	2 994	474.380	R148	18 227.890	2 995	690.160	
L149	18 451.180	2 993	536.590	R149	18 306.100	2 994	779.770	
L150	18 452.990	2 993	515.730	R150	18 337.210	2 994	459.650	
L151	18 479.370	2 993	207.900	R151	18 374.010	2 994	046.800	
L152	18 490.660	2 993	117.120	R152	18 411.980	2 993	551.650	
L153	18 514.050	2 992	966.790	R153	18 416.780	2 993	495.780	

Vel	8	Van	9	P747/09
Sheet		of		

PADRESERWE KOÖRDINATE					/		ROAD RESERVE CO-ORDINATES	
LINKERKANT/LEFT HAND SIDE					REGTERKANT/RIGHT HAND SIDE			
	Y	X	WG	31°		Y	X	
L154	18 572.240	2 992 701.150			R154	18 446.630	2 993 148.790	
L155	18 662.420	2 992 277.050			R155	18 455.900	2 993 076.650	
L156	18 667.060	2 992 208.380			R156	18 488.050	2 992 903.690	
L157	18 635.760	2 992 143.730			R157	18 564.440	2 992 589.530	
L158	18 615.390	2 992 074.500			R158	18 607.760	2 992 375.130	
					R159	18 604.310	2 992 317.850	
					R160	18 577.950	2 992 228.740	
					R161	18 539.260	2 992 194.270	
					R162	18 512.000	2 992 204.650	
					Vel 9 Van 9		P747/09	
					Sheet of			