

Government Gazette Staatskoerant

REPUBLIC OF SOUTH AFRICA
REPUBLIEK VAN SUID-AFRIKA

Vol. 544

Pretoria, 22 October
Oktober 2010

No. 33643

IMPORTANT NOTICE

The Government Printing Works will not be held responsible for faxed documents not received due to errors on the fax machine or faxes received which are unclear or incomplete. Please be advised that an "OK" slip, received from a fax machine, will not be accepted as proof that documents were received by the GPW for printing. If documents are faxed to the GPW it will be the sender's responsibility to phone and confirm that the documents were received in good order.

Furthermore the Government Printing Works will also not be held responsible for cancellations and amendments which have not been done on original documents received from clients.

CONTENTS**INHOUD**

<i>No.</i>	<i>Page No.</i>	<i>Gazette No.</i>	<i>No.</i>	<i>Bladsy No.</i>	<i>Koerant No.</i>
GOVERNMENT NOTICE			GOEWERMENTSKENNISGEWING		
Transport, Department of			Vervoer, Departement van		
<i>Government Notice</i>			<i>Goewermentskennisgewing</i>		
917			917		
South African National Roads Agency Limited and the National Roads Act (7/1998): The South African National Roads Agency Limited: Declaration amendment of National Road R37 Section 3: Amendment of Declaration No. 727 of 2005	3	33643	Suid-Afrikaanse Nasionale Padagentskap Beperk en die Nasionale Paaie Wet (7/1998): Die Suid-Afrikaanse Nasionale Padagentskap Beperk: Verklaring wysiging van Nasionale Pad R37 Seksie 3: Wysiging van Verklaring No. 727 van 2005	4	33643

GOVERNMENT NOTICE

DEPARTMENT OF TRANSPORT

No. 917

22 October 2010

**THE SOUTH AFRICAN NATIONAL ROADS
AGENCY LIMITED**Registration No: 98/09584/06

DECLARATION AMENDMENT OF NATIONAL ROAD R37 SECTION 3

AMENDMENT OF DECLARATION NO. 727 OF 2005.

By virtue of section 40(1)(b) of the South African National Roads Agency Limited and the National Roads Act, 1998 (Act No. 7 of 1998), I hereby amend Declaration No. 727 of 2005 Annexure paragraph (ii), by substituting it, with the subjoined sheets 1 to 16 of Plan No. P761/09.

(National Road R37 Section 3: Lydenburg – Sabie Turn Off)

MINISTER OF TRANSPORT

GOEWERMENTSKENNISGEWING

DEPARTEMENT VAN VERVOER

No. 917

22 Oktober 2010

DIE SUID-AFRIKAANSE NASIONALE PADAGENTSKAP BEPERK

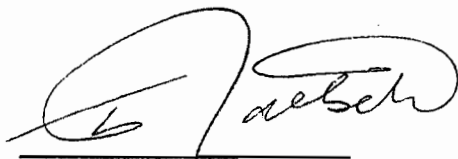
Registrasie No: 98/09584/06

VERKLARING WYSIGING VAN NASIONALE PAD R37 SEKSIE 3.

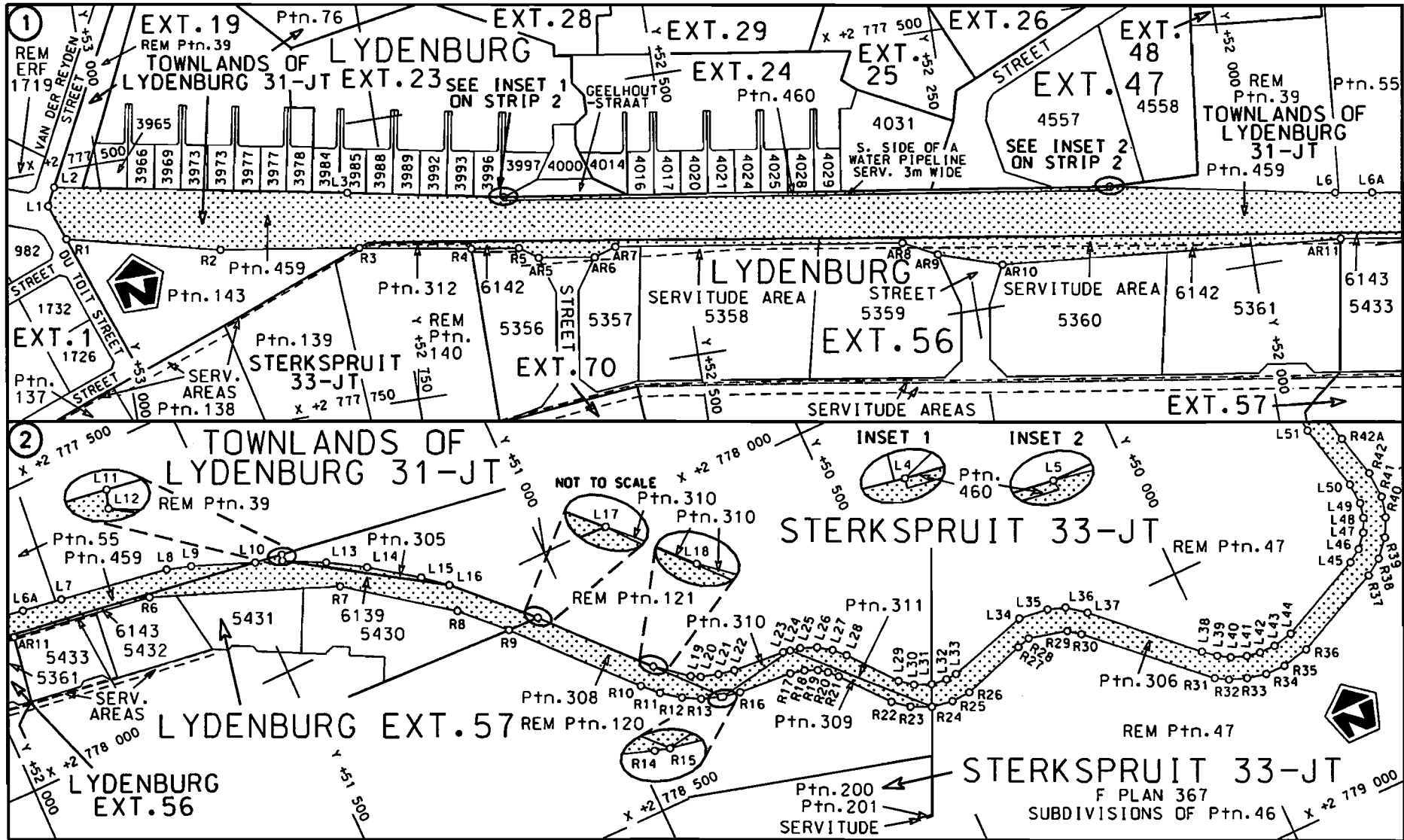
WYSIGING VAN VERKLARING NO. 727 VAN 2005

Kragtens Artikel 40(1)(b) van die Suid-Afrikaanse Nasionale Padagentskap Beperk en die Nasionale Paaie Wet, 1998 (Wet no. 7 van 1998), wysig ek hiermee Verklaring no. 727 van 2005 Bylae paragraaf (ii) deur dit te vervang met meegaande velle 1 tot 16 van Plan no. P761/09.

(Nasionale Pad R37 Seksie 3: Lydenburg – Sabie Afdraai)

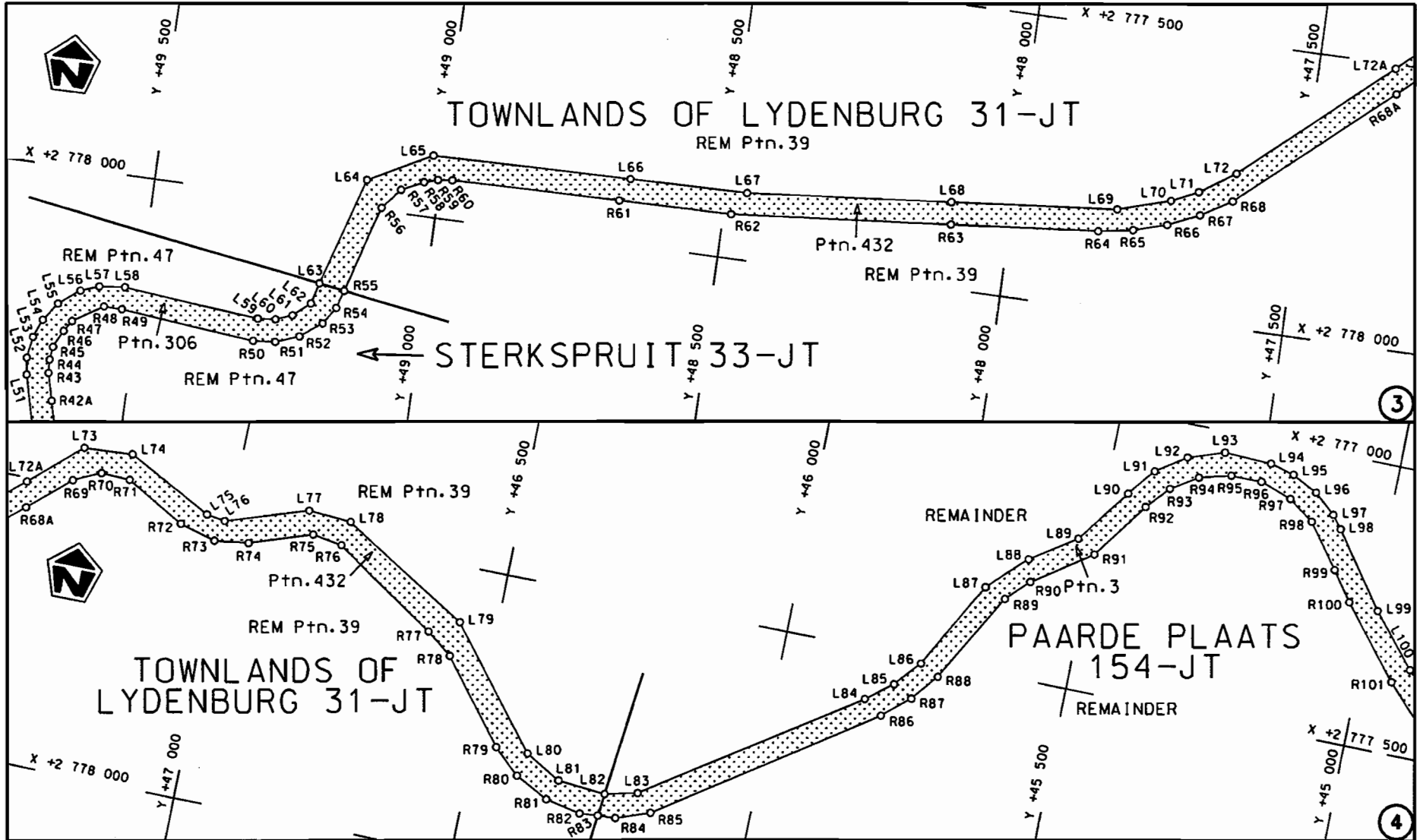


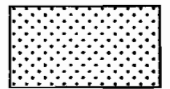
MINISTER VAN VERVOER

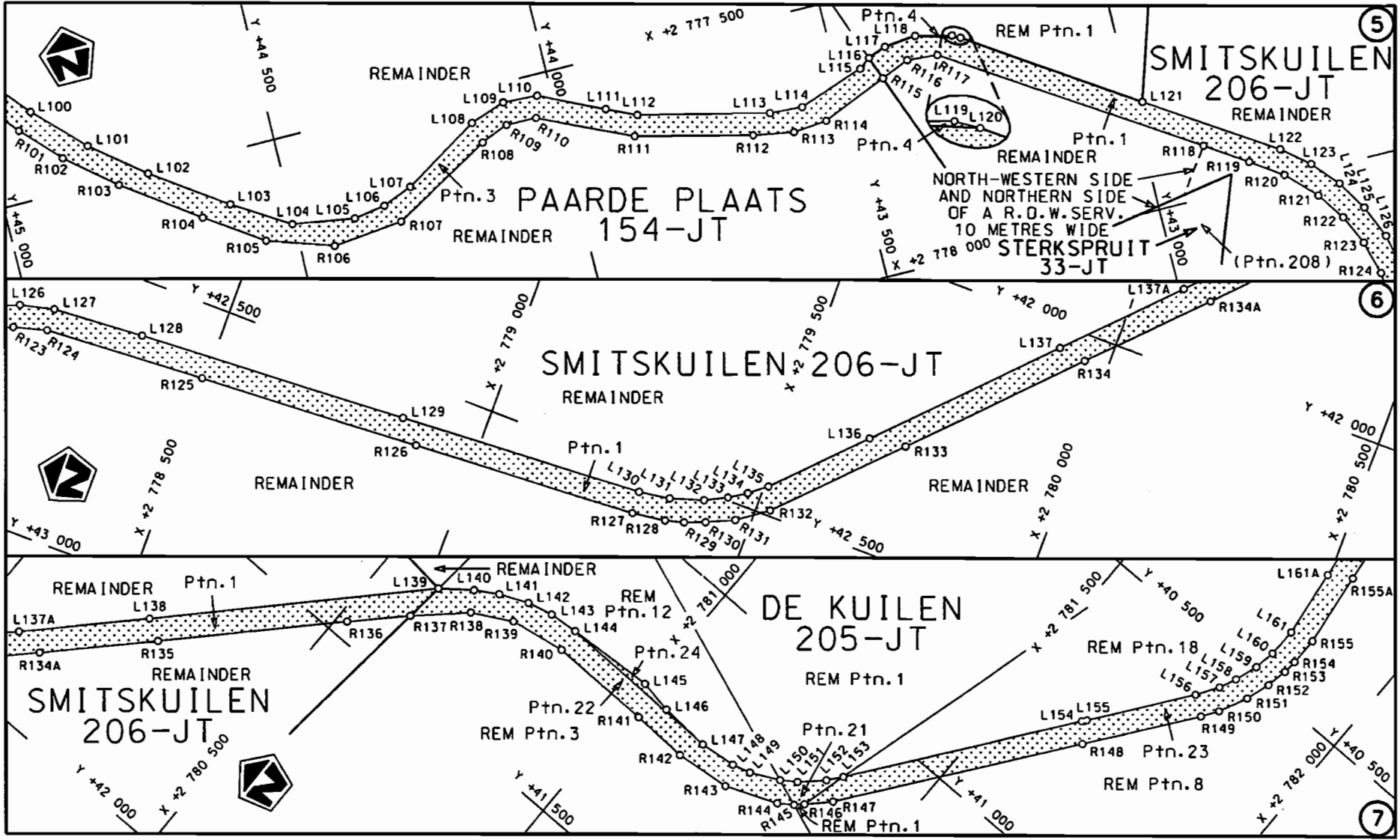


STAATSKOERANT, 22 OKTOBER 2010

<p>Die Suid Afrikaanse Nasionale Padagentskap Beperk The South African National Roads Agency Limited</p>	<p>Die figuur getoon The figure shown</p>		<p>steldie padreserwe voor van 'n gedeelte represents the road reserve of a portion van Nasionale Roete of National Route</p>	<p>R37 Seksie Section</p>	<p>Vel Sheet 1 van of 16</p>	<p>Plan P761/09</p>
--	---	--	---	-------------------------------	--------------------------------------	-------------------------

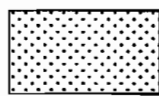


<p>Die Suid Afrikaanse Nasionale Padogenskop Beperk The South African National Roads Agency Limited</p>	<p>Die figuur getoon The figure shown</p>		<p>steldie podreserve voor van 'n gedeelte represents the road reserve of a portion van Nasionale Roete R37 Sektie of National Route R37 Section</p>	<p>Vel Sheet 2 van of 16</p>
			<p>3</p>	<p>Plan P761/09</p>



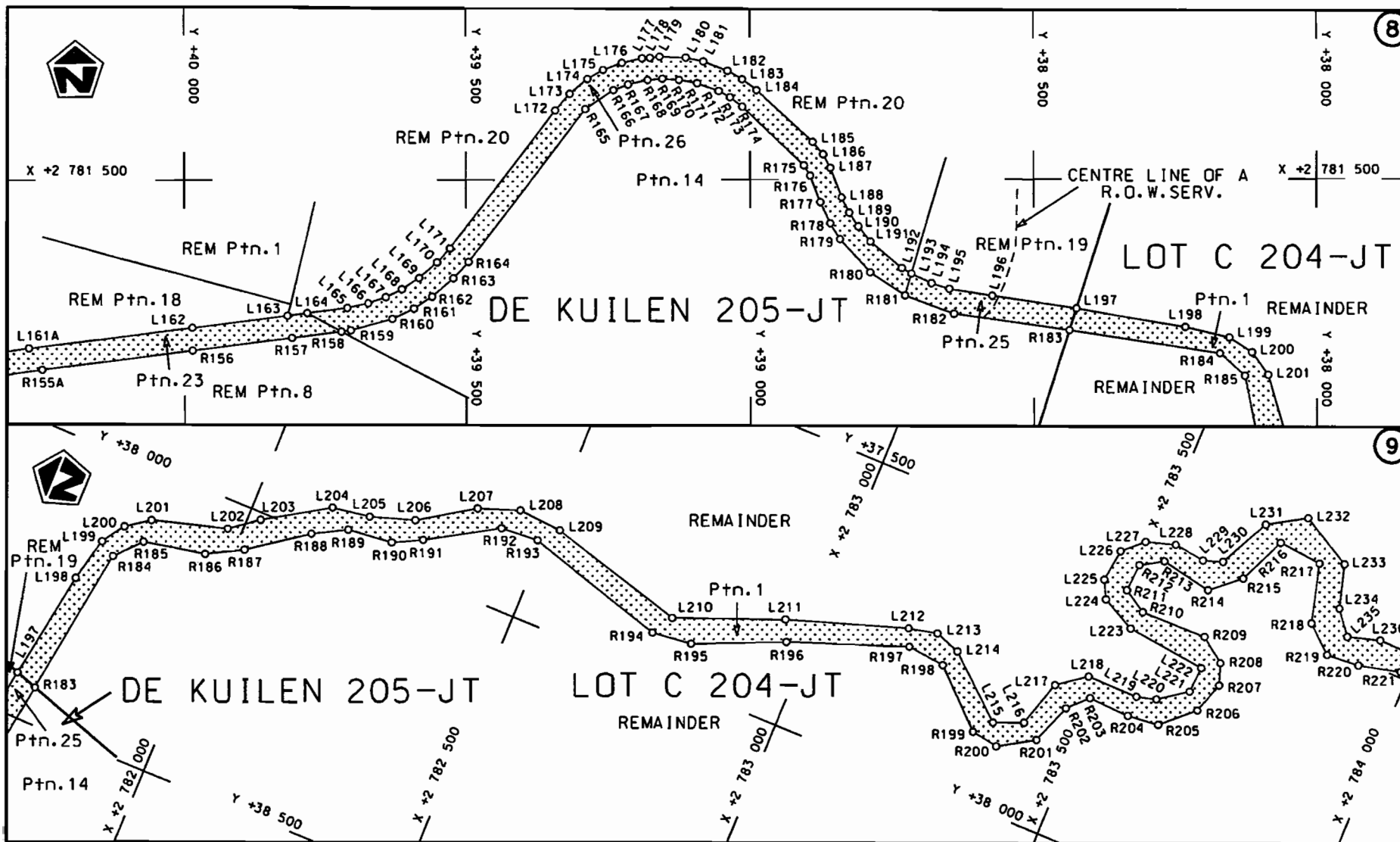
Die Suid Afrikaanse Nasionale Padagentskap Beperk
 The South African National Roads Agency Limited

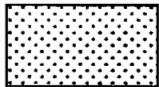
Die figuur getoon
 The figure shown

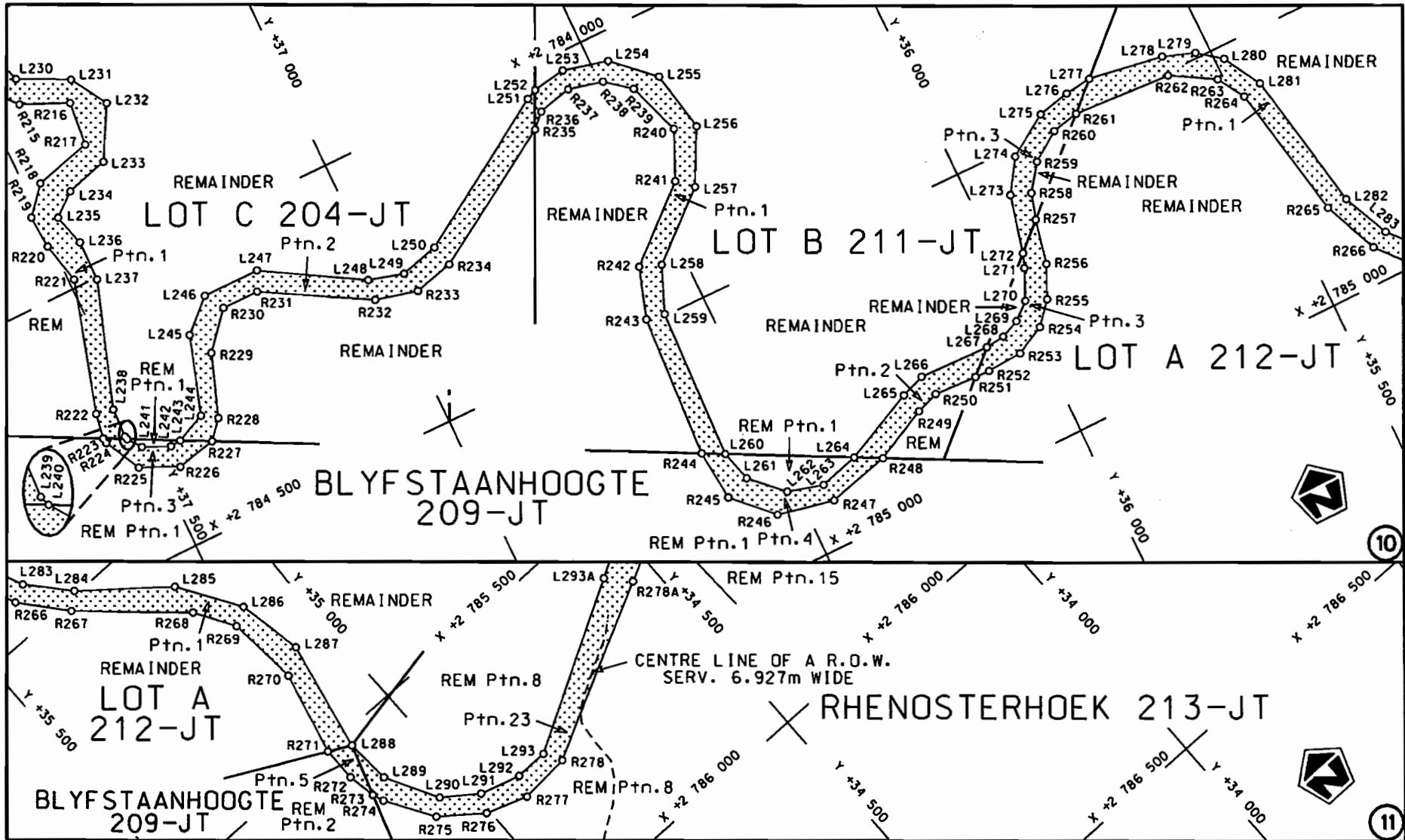


steldie padreserwe voor van 'n gedeelte
 represents the road reserve of a portion
 van Nasionale Roete R37 Seksie 3
 of National Route R37 Section 3

Vel Sheet 3 van 16
 Plan P761/09

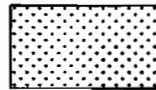


<p>Die Suid Afrikaanse Nasionale Padagentskop Beperk The South African National Roads Agency Limited</p>	<p>Die figuur getoon The figure shown</p> 	<p>steldie padreserwe voor van 'n gedeelte represents the road reserve of a portion van Nasionale Roete R37 Seksie Section 3 of National Route</p>	<p>Vel Sheet 4 of 16 Plan P761/09</p>
--	--	--	---



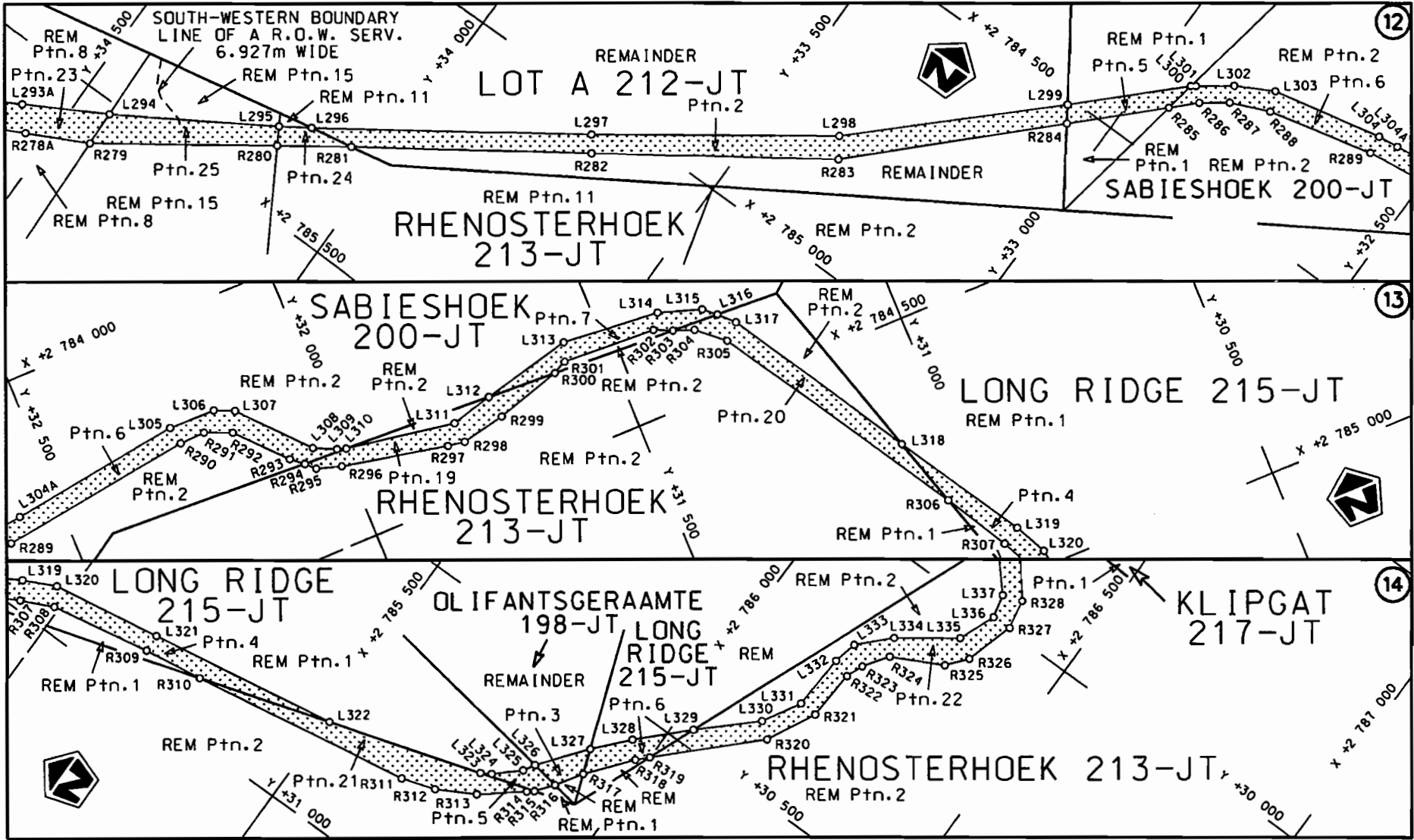
Die Suid Afrikaanse Nasionale Padagentskap Beperk
The South African National Roads Agency Limited


Die figuur getoon
The figure shown

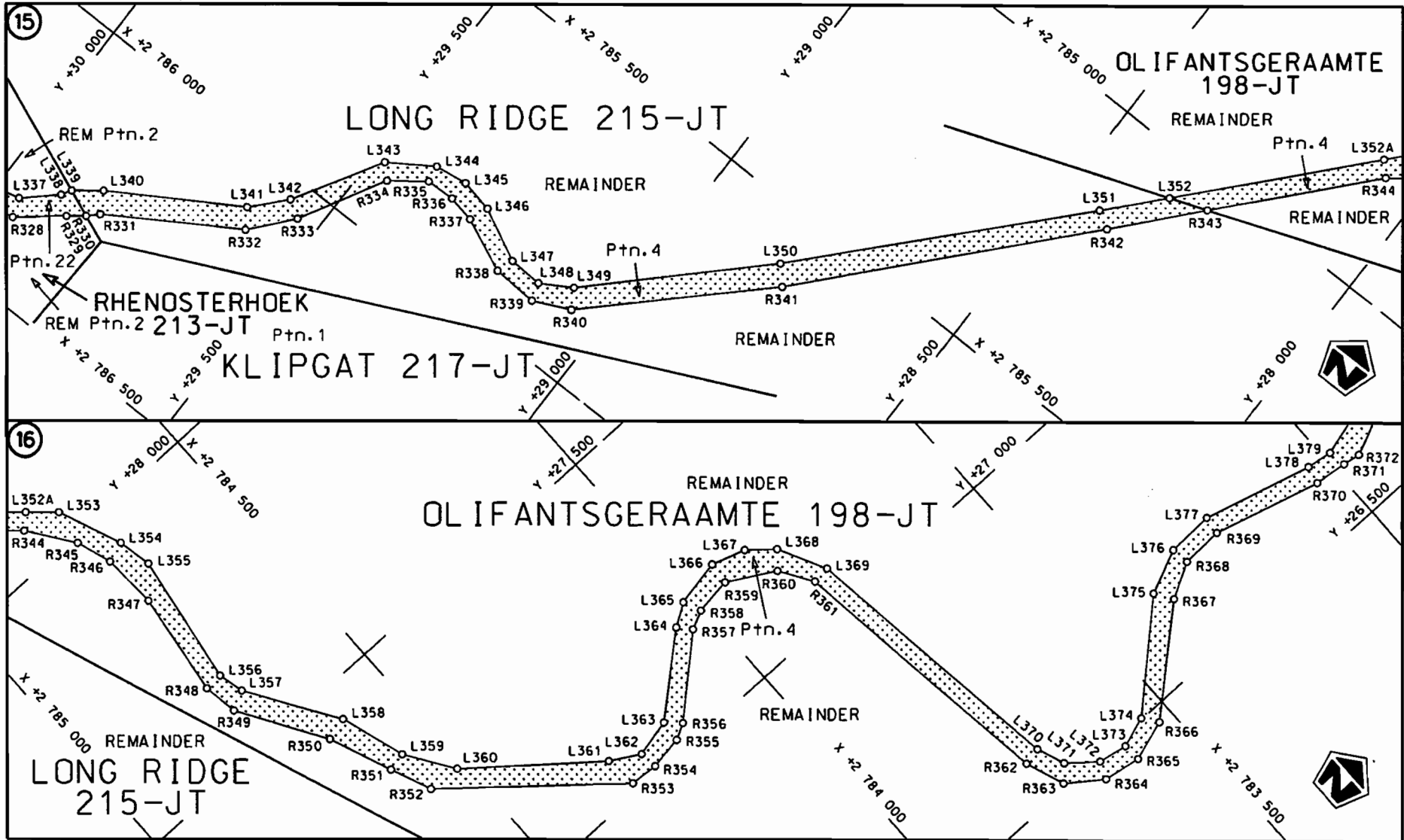


steldie padreserwe voor van 'n gedeelte
represents the road reserve of a portion
van Nasionale Roete R37 Seksie Section 3
of National Route

Vel. Sheet 5 van of 16
Plan P761/09

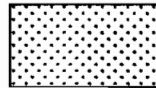


<p>Die Suid Afrikaanse Nasionale Padagentskap Beperk The South African National Roads Agency Limited</p>	<p>Die figuur getoon The figure shown</p>		<p>steldie padreserwe voor van 'n gedeelte represents the road reserve of a portion van Nasionale Roete R37 Seksie 3 of National Route R37 Section 3</p>	<p>Vel Sheet 6 van 16 of 6 of 16</p>
				<p>Plan P761/09</p>



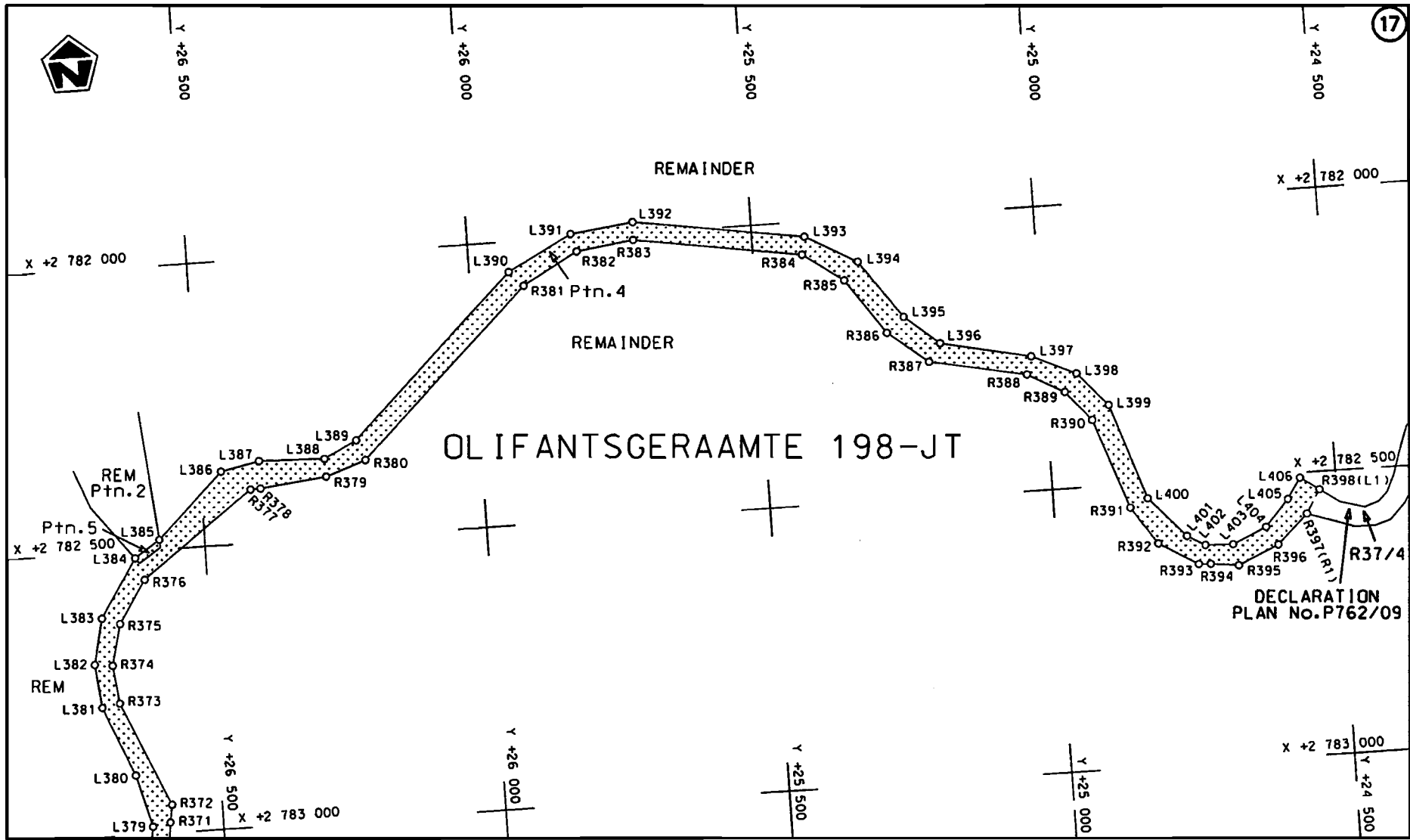
Die Suid Afrikaanse Nasionale Padagentskap Beperk
 The South African National Roads Agency Limited

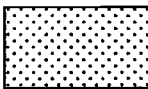
Die figuur getoon
 The figure shown



stel die padreserwe voor van 'n gedeelte
 represents the road reserve of a portion
 van Nasionale Roete R37 Sektie 3
 of National Route R37 Section 3

Vel 7 van 16
 Sheet 7 of 16
 Plan P761/09



<p>Die Suid Afrikaanse Nasionale Padagentskap Beperk The South African National Roads Agency Limited</p>	<p>Die figuur getoon The figure shown</p> 	<p>stel die padreserwe voor van 'n gedeelte represents the road reserve of a portion van Nasionale Roete R37 Sektie 3 of National Route R37 Section 3</p>	<p>Vel 8 van 16 Sheet 8 of 16 Plan P761/09</p>
--	--	---	--

PADRESERWE KOÖRDINATE				/	ROAD RESERVE CO-ORDINATES			
LINKERKANT/LEFT HAND SIDE					REGTERKANT/RIGHT HAND SIDE			
	Y	X	WG	31°	Y	X		
L1	53 048.750	2 777	530.120	R1	53 037.160	2 777	561.540	
L2	53 040.720	2 777	514.500	R2	52 903.550	2 777	592.290	
L3	52 783.340	2 777	560.790	R3	52 780.630	2 777	610.610	
L4	52 648.210	2 777	586.430	R4	52 683.660	2 777	626.880	
L5	52 115.340	2 777	661.310	R5	52 642.160	2 777	632.860	
L6	51 918.320	2 777	698.520	AR5	52 626.020	2 777	644.140	
L7	51 814.090	2 777	715.060	AR6	52 576.560	2 777	651.520	
L8	51 621.620	2 777	746.080	AR7	52 557.070	2 777	645.120	
L9	51 580.190	2 777	759.000	AR8	52 305.250	2 777	681.410	
L10	51 472.940	2 777	801.010	AR9	52 275.750	2 777	696.380	
L11	51 423.280	2 777	808.420	AR10	52 220.940	2 777	714.140	
L12	51 426.930	2 777	818.930	AR11	51 919.770	2 777	739.340	
L13	51 356.750	2 777	854.650	R6	51 670.010	2 777	777.560	
L14	51 294.460	2 777	892.270	R7	51 351.820	2 777	902.940	
L15	51 215.720	2 777	948.840	R8	51 182.770	2 778	028.640	
L16	51 176.540	2 777	981.490	R9	51 114.580	2 778	096.660	
L17	51 058.610	2 778	098.760	R10	50 942.660	2 778	284.230	
L18	50 908.270	2 778	262.400	R11	50 917.380	2 778	309.580	
L19	50 855.760	2 778	305.290	R12	50 885.410	2 778	333.550	
L20	50 839.950	2 778	313.660	R13	50 855.740	2 778	349.570	
L21	50 809.600	2 778	322.790	R14	50 822.570	2 778	360.820	
L22	50 781.360	2 778	328.100	R15	50 818.160	2 778	362.070	
L23	50 689.000	2 778	335.350	R16	50 788.120	2 778	367.360	
L24	50 676.460	2 778	337.840	R17	50 693.210	2 778	374.540	
L25	50 658.350	2 778	341.210	R18	50 668.050	2 778	379.980	
L26	50 630.680	2 778	352.500	R19	50 646.440	2 778	389.290	
L27	50 607.330	2 778	368.490	R20	50 631.120	2 778	400.290	
L28	50 588.460	2 778	387.150	R21	50 616.770	2 778	415.080	
L29	50 523.500	2 778	466.640	R22	50 550.540	2 778	494.960	
L30	50 501.670	2 778	484.040	R23	50 523.500	2 778	516.540	
L31	50 472.630	2 778	496.250	R24	50 489.260	2 778	532.480	
L32	50 445.600	2 778	499.470	R25	50 452.170	2 778	538.590	
L33	50 426.310	2 778	497.790	R26	50 418.940	2 778	536.850	
L34	50 283.600	2 778	456.180	R27	50 306.360	2 778	500.870	
L35	50 231.130	2 778	462.670	R28	50 283.170	2 778	494.860	
L36	50 200.560	2 778	472.810	R29	50 215.000	2 778	511.730	
L37	50 168.430	2 778	497.590	R30	50 194.430	2 778	527.370	
L38	50 013.760	2 778	644.500	R31	50 012.780	2 778	696.200	
L39	49 992.210	2 778	662.560	R32	49 990.960	2 778	709.100	
L40	49 971.610	2 778	674.800	R33	49 960.830	2 778	720.130	
L41	49 945.040	2 778	684.790	R34	49 927.190	2 778	727.840	
L42	49 921.160	2 778	688.900	R35	49 891.840	2 778	728.200	
L43	49 892.780	2 778	689.040	R36	49 844.450	2 778	718.390	
L44	49 857.690	2 778	681.720	R37	49 687.960	2 778	647.610	
L45	49 707.040	2 778	613.400	R38	49 659.100	2 778	628.130	
L46	49 684.530	2 778	598.170	R39	49 633.570	2 778	599.120	
L47	49 664.780	2 778	575.500	R40	49 617.660	2 778	567.650	
L48	49 653.590	2 778	552.040	R41	49 608.850	2 778	532.200	
L49	49 647.960	2 778	526.270	R42	49 611.360	2 778	485.620	
L50	49 650.680	2 778	489.460	R43	49 641.790	2 778	363.440	
L51	49 680.250	2 778	371.570	R44	49 643.170	2 778	339.990	

Vel	9	Van	16	P761/09
Sheet		of		

PADRESERWE KOÖRDINATE				/	ROAD RESERVE CO-ORDINATES			
LINKERKANT/LEFT HAND SIDE					REGTERKANT/RIGHT HAND SIDE			
	Y	X	WG	31°	Y	X		
L52	49 684.020	2 778 342.380			R45	49 640.370	2 778 317.290	
L53	49 677.820	2 778 305.020			R46	49 625.150	2 778 287.010	
L54	49 664.410	2 778 272.670			R47	49 612.550	2 778 267.880	
L55	49 641.610	2 778 240.750			R48	49 559.300	2 778 233.770	
L56	49 604.700	2 778 212.980			R49	49 527.080	2 778 234.400	
L57	49 572.330	2 778 200.250			R50	49 290.860	2 778 258.000	
L58	49 526.940	2 778 195.400			R51	49 252.170	2 778 254.560	
L59	49 288.160	2 778 218.400			R52	49 210.830	2 778 239.130	
L60	49 256.980	2 778 215.260			R53	49 173.350	2 778 210.730	
L61	49 227.980	2 778 204.350			R54	49 152.450	2 778 180.600	
L62	49 198.560	2 778 179.000			R55	49 142.540	2 778 148.580	
L63	49 188.380	2 778 141.740			R56	49 095.530	2 777 994.810	
L64	49 127.570	2 777 949.840			R57	49 065.500	2 777 958.780	
L65	49 017.430	2 777 891.310			R58	49 027.100	2 777 940.070	
L66	48 669.970	2 777 885.370			R59	49 003.940	2 777 932.860	
L67	48 463.990	2 777 881.870			R60	48 978.660	2 777 930.000	
L68	48 106.030	2 777 847.840			R61	48 684.680	2 777 925.450	
L69	47 816.450	2 777 820.260			R62	48 486.840	2 777 922.370	
L70	47 724.350	2 777 792.360			R63	48 101.490	2 777 886.900	
L71	47 677.890	2 777 770.650			R64	47 844.390	2 777 862.760	
L72	47 617.020	2 777 729.350			R65	47 784.010	2 777 852.560	
L73	47 276.850	2 777 429.150			R66	47 725.520	2 777 835.340	
L74	47 190.290	2 777 423.110			R67	47 670.470	2 777 810.590	
L75	47 040.630	2 777 500.490			R68	47 617.000	2 777 778.610	
L76	47 008.010	2 777 505.430			R69	47 285.730	2 777 488.940	
L77	46 865.780	2 777 458.060			R70	47 238.120	2 777 466.370	
L78	46 789.100	2 777 462.930			R71	47 186.480	2 777 468.070	
L79	46 565.490	2 777 597.530			R72	47 083.060	2 777 525.720	
L80	46 404.730	2 777 800.360			R73	47 018.980	2 777 543.170	
L81	46 341.980	2 777 836.370			R74	46 959.750	2 777 535.210	
L82	46 257.700	2 777 843.440			R75	46 850.780	2 777 497.900	
L83	46 201.200	2 777 830.130			R76	46 797.430	2 777 506.310	
L84	45 842.740	2 777 588.600			R77	46 615.950	2 777 624.380	
L85	45 797.210	2 777 552.830			R78	46 570.850	2 777 658.950	
L86	45 757.730	2 777 507.420			R79	46 460.320	2 777 800.260	
L87	45 673.330	2 777 353.540			R80	46 415.210	2 777 842.210	
L88	45 608.970	2 777 290.250			R81	46 356.710	2 777 872.830	
L89	45 530.850	2 777 237.490			R82	46 294.220	2 777 885.550	
L90	45 460.490	2 777 142.010			R83	46 261.990	2 777 882.810	
L91	45 422.350	2 777 094.250			R84	46 231.430	2 777 881.100	
L92	45 369.820	2 777 058.850			R85	46 172.280	2 777 859.830	
L93	45 307.140	2 777 037.200			R86	45 809.120	2 777 611.620	
L94	45 224.600	2 777 040.300			R87	45 762.410	2 777 571.160	
L95	45 182.040	2 777 051.590			R88	45 724.050	2 777 524.590	
L96	45 137.140	2 777 074.220			R89	45 636.140	2 777 367.020	
L97	45 099.480	2 777 106.440			R90	45 598.240	2 777 328.860	
L98	45 081.710	2 777 128.780			R91	45 497.520	2 777 258.930	
L99	44 988.970	2 777 256.330			R92	45 425.450	2 777 158.890	
L100	44 911.980	2 777 346.370			R93	45 389.520	2 777 119.020	
L101	44 827.020	2 777 429.400			R94	45 343.330	2 777 089.530	
L102	44 734.550	2 777 503.000			R95	45 288.150	2 777 074.830	

Vel	10	Van	16	P761/09
Sheet		of		

PADRESERWE KOÖRDINATE				/	ROAD RESERVE CO-ORDINATES			
LINKERKANT/LEFT HAND SIDE					REGTERKANT/RIGHT HAND SIDE			
	Y	X	WG	31°	Y	X		
L103	44 604.710	2 777 592.460		R96	45 234.850	2 777 074.870		
L104	44 503.870	2 777 654.110		R97	45 179.200	2 777 094.340		
L105	44 393.580	2 777 671.090		R98	45 134.590	2 777 125.950		
L106	44 337.530	2 777 661.910		R99	45 077.650	2 777 201.160		
L107	44 284.880	2 777 640.410		R100	45 041.140	2 777 251.520		
L108	44 151.300	2 777 556.260		R101	44 940.350	2 777 373.590		
L109	44 088.390	2 777 534.440		R102	44 875.570	2 777 439.970		
L110	44 025.960	2 777 537.480		R103	44 790.070	2 777 509.990		
L111	43 913.450	2 777 590.000		R104	44 659.120	2 777 602.870		
L112	43 862.220	2 777 613.320		R105	44 557.440	2 777 671.270		
L113	43 632.120	2 777 666.710		R106	44 440.130	2 777 710.060		
L114	43 573.950	2 777 670.010		R107	44 315.520	2 777 696.380		
L115	43 456.190	2 777 628.810		R108	44 141.330	2 777 594.640		
L116	43 436.880	2 777 613.830		R109	44 092.380	2 777 574.730		
L117	43 404.520	2 777 601.340		R110	44 037.370	2 777 575.450		
L118	43 348.120	2 777 595.150		R111	43 875.850	2 777 648.960		
L119	43 284.740	2 777 610.150		R112	43 670.890	2 777 697.800		
L120	43 270.800	2 777 617.680		R113	43 598.820	2 777 709.900		
L121	42 983.000	2 777 806.780		R114	43 538.030	2 777 704.090		
L122	42 764.170	2 777 947.990		R115	43 421.410	2 777 654.790		
L123	42 716.490	2 777 987.060		R116	43 372.000	2 777 633.600		
L124	42 675.530	2 778 033.260		R117	43 318.060	2 777 637.770		
L125	42 643.320	2 778 085.280		R118	42 895.590	2 777 908.580		
L126	42 618.230	2 778 143.690		R119	42 823.270	2 777 956.410		
L127	42 604.030	2 778 204.680		R120	42 767.790	2 777 994.400		
L128	42 593.000	2 778 367.210		R121	42 717.510	2 778 044.690		
L129	42 565.870	2 778 856.290		R122	42 683.670	2 778 093.210		
L130	42 541.250	2 779 294.910		R123	42 659.330	2 778 145.790		
L131	42 532.990	2 779 349.980		R124	42 643.100	2 778 205.380		
L132	42 514.730	2 779 408.080		R125	42 626.150	2 778 493.890		
L133	42 495.070	2 779 446.300		R126	42 603.090	2 778 894.430		
L134	42 475.640	2 779 476.650		R127	42 580.550	2 779 296.750		
L135	42 451.580	2 779 507.400		R128	42 572.550	2 779 355.780		
L136	42 308.650	2 779 646.860		R129	42 563.710	2 779 388.560		
L137	42 039.150	2 779 909.090		R130	42 550.070	2 779 424.170		
L138	41 696.150	2 780 242.760		R131	42 527.740	2 779 472.320		
L139	41 320.960	2 780 603.120		R132	42 489.870	2 779 525.100		
L140	41 282.220	2 780 653.600		R133	42 299.440	2 779 711.380		
L141	41 258.460	2 780 692.420		R134	42 045.240	2 779 958.530		
L142	41 236.050	2 780 742.650		R135	41 716.590	2 780 279.690		
L143	41 224.670	2 780 787.580		R136	41 469.680	2 780 517.790		
L144	41 220.100	2 780 838.340		R137	41 389.880	2 780 596.390		
L145	41 212.020	2 780 992.360		R138	41 316.280	2 780 674.690		
L146	41 222.120	2 781 050.810		R139	41 278.690	2 780 742.840		
L147	41 227.630	2 781 139.870		R140	41 260.980	2 780 841.490		
L148	41 220.310	2 781 203.620		R141	41 264.540	2 781 021.640		
L149	41 210.880	2 781 235.900		R142	41 268.290	2 781 121.060		
L150	41 186.020	2 781 285.830		R143	41 257.580	2 781 217.790		
L151	41 168.360	2 781 311.360		R144	41 220.590	2 781 308.350		
L152	41 132.450	2 781 348.840		R145	41 203.110	2 781 332.740		
L153	41 108.350	2 781 368.300		R146	41 190.480	2 781 346.120		

Vel 11 Van 16
Sheet of P761/09

PADRESERWE KOÖRDINATE				/	ROAD RESERVE CO-ORDINATES			
LINKERKANT/LEFT HAND SIDE					REGTERKANT/RIGHT HAND SIDE			
	Y	X	WG 31°		Y	X		
L154	40 757.120	2 781 628.100		R147	41 153.590	2 781 382.380		
L155	40 750.070	2 781 633.930		R148	40 787.260	2 781 654.860		
L156	40 590.600	2 781 751.770		R149	40 613.950	2 781 784.020		
L157	40 553.110	2 781 775.730		R150	40 586.010	2 781 802.560		
L158	40 523.240	2 781 789.330		R151	40 536.200	2 781 826.480		
L159	40 483.480	2 781 802.930		R152	40 493.570	2 781 840.150		
L160	40 446.030	2 781 809.630		R153	40 456.540	2 781 847.540		
L161	40 395.980	2 781 811.260		R154	40 432.270	2 781 849.710		
L162	39 986.370	2 781 759.960		R155	40 383.060	2 781 850.630		
L163	39 817.040	2 781 738.750		R156	39 985.970	2 781 800.120		
L164	39 781.840	2 781 734.030		R157	39 809.130	2 781 777.930		
L165	39 709.560	2 781 724.620		R158	39 720.090	2 781 766.500		
L166	39 671.890	2 781 716.460		R159	39 703.310	2 781 764.290		
L167	39 640.750	2 781 705.830		R160	39 629.400	2 781 744.080		
L168	39 612.590	2 781 691.960		R161	39 591.490	2 781 726.000		
L169	39 582.380	2 781 672.400		R162	39 559.400	2 781 705.310		
L170	39 550.650	2 781 644.980		R163	39 522.330	2 781 673.080		
L171	39 528.420	2 781 620.580		R164	39 495.620	2 781 644.360		
L172	39 342.370	2 781 377.610		R165	39 288.390	2 781 375.310		
L173	39 316.180	2 781 348.320		R166	39 238.710	2 781 341.980		
L174	39 284.440	2 781 322.480		R167	39 213.180	2 781 332.130		
L175	39 257.010	2 781 306.320		R168	39 179.140	2 781 324.320		
L176	39 223.750	2 781 293.780		R169	39 152.770	2 781 322.050		
L177	39 188.640	2 781 285.870		R170	39 123.520	2 781 324.070		
L178	39 174.970	2 781 285.170		R171	39 092.000	2 781 330.160		
L179	39 157.810	2 781 282.940		R172	39 054.510	2 781 343.990		
L180	39 111.510	2 781 285.000		R173	39 034.860	2 781 355.020		
L181	39 081.230	2 781 291.670		R174	39 013.260	2 781 371.340		
L182	39 039.220	2 781 308.250		R175	38 904.720	2 781 474.790		
L183	39 013.550	2 781 323.230		R176	38 894.010	2 781 493.280		
L184	38 988.120	2 781 342.380		R177	38 876.030	2 781 539.690		
L185	38 889.390	2 781 433.340		R178	38 858.400	2 781 577.270		
L186	38 870.720	2 781 455.240		R179	38 840.940	2 781 605.250		
L187	38 858.040	2 781 479.170		R180	38 787.190	2 781 663.200		
L188	38 837.570	2 781 531.540		R181	38 725.910	2 781 704.150		
L189	38 824.220	2 781 558.370		R182	38 640.370	2 781 736.240		
L190	38 808.380	2 781 582.510		R183	38 436.870	2 781 765.450		
L191	38 786.870	2 781 609.180		R184	38 170.820	2 781 806.560		
L192	38 731.510	2 781 655.870		R185	38 126.900	2 781 846.300		
L193	38 714.500	2 781 665.720		R186	38 105.310	2 781 954.780		
L194	38 679.140	2 781 682.510		R187	38 071.880	2 782 016.290		
L195	38 648.250	2 781 692.450		R188	38 000.450	2 782 115.790		
L196	38 573.390	2 781 704.920		R189	37 968.560	2 782 174.550		
L197	38 424.360	2 781 727.030		R190	37 959.660	2 782 254.410		
L198	38 231.810	2 781 760.120		R191	37 934.690	2 782 303.900		
L199	38 154.380	2 781 778.680		R192	37 863.600	2 782 422.480		
L200	38 114.740	2 781 805.030		R193	37 858.930	2 782 489.360		
L201	38 086.320	2 781 844.870		R194	37 931.470	2 782 738.860		
L202	38 048.960	2 781 974.970		R195	37 923.530	2 782 809.020		
L203	38 012.210	2 782 022.730		R196	37 856.710	2 782 962.480		
L204	37 943.270	2 782 133.370		R197	37 780.970	2 783 167.080		

Vel	12	Van	16	P761/09
Sheet		of		

PADRESERWE KOÖRDINATE				/	ROAD RESERVE CO-ORDINATES			
LINKERKANT/LEFT HAND SIDE					REGTERKANT/RIGHT HAND SIDE			
	Y	X	WG 31°		Y	X		
L205	37 932.430	2 782 201.480		R198	37 788.410	2 783 233.350		
L206	37 907.650	2 782 278.000		R199	37 877.100	2 783 326.750		
L207	37 847.250	2 782 370.570		R200	37 885.380	2 783 374.060		
L208	37 821.790	2 782 441.060		R201	37 847.620	2 783 435.540		
L209	37 827.450	2 782 519.520		R202	37 776.070	2 783 462.610		
L210	37 894.140	2 782 761.230		R203	37 742.750	2 783 495.600		
L211	37 820.650	2 782 945.590		R204	37 746.290	2 783 569.360		
L212	37 751.390	2 783 153.540		R205	37 740.530	2 783 624.880		
L213	37 740.310	2 783 203.400		R206	37 690.820	2 783 679.350		
L214	37 756.320	2 783 247.770		R207	37 635.210	2 783 697.850		
L215	37 848.870	2 783 352.860		R208	37 597.800	2 783 684.960		
L216	37 828.080	2 783 403.630		R209	37 565.610	2 783 641.540		
L217	37 745.510	2 783 429.120		R210	37 567.170	2 783 524.040		
L218	37 708.690	2 783 478.670		R211	37 542.110	2 783 483.520		
L219	37 709.460	2 783 570.500		R212	37 493.090	2 783 487.330		
L220	37 700.090	2 783 604.920		R213	37 469.920	2 783 525.460		
L221	37 664.820	2 783 654.160		R214	37 487.620	2 783 615.830		
L222	37 618.780	2 783 657.000		R215	37 445.030	2 783 665.090		
L223	37 601.960	2 783 515.190		R216	37 361.550	2 783 702.330		
L224	37 571.250	2 783 455.480		R217	37 369.060	2 783 780.110		
L225	37 540.390	2 783 439.770		R218	37 471.510	2 783 806.670		
L226	37 483.160	2 783 447.420		R219	37 512.420	2 783 853.770		
L227	37 450.970	2 783 481.570		R220	37 508.130	2 783 912.400		
L228	37 435.380	2 783 533.220		R221	37 490.370	2 783 985.460		
L229	37 442.610	2 783 587.770		R222	37 558.530	2 784 215.540		
L230	37 431.220	2 783 621.690		R223	37 566.200	2 784 259.990		
L231	37 342.050	2 783 665.980		R224	37 564.620	2 784 269.630		
L232	37 302.820	2 783 730.950		R225	37 531.560	2 784 333.150		
L233	37 353.260	2 783 821.540		R226	37 464.940	2 784 363.770		
L234	37 428.790	2 783 842.710		R227	37 394.320	2 784 348.270		
L235	37 469.050	2 783 874.940		R228	37 366.510	2 784 316.330		
L236	37 452.460	2 783 931.080		R229	37 327.930	2 784 208.470		
L237	37 453.680	2 784 003.510		R230	37 273.840	2 784 146.310		
L238	37 527.770	2 784 221.840		R231	37 207.430	2 784 146.780		
L239	37 529.990	2 784 273.500		R232	37 023.520	2 784 251.910		
L240	37 527.840	2 784 279.690		R233	36 949.640	2 784 270.290		
L241	37 510.600	2 784 303.330		R234	36 880.310	2 784 251.990		
L242	37 464.120	2 784 324.270		R235	36 640.000	2 784 103.660		
L243	37 444.980	2 784 322.250		R236	36 616.380	2 784 079.910		
L244	37 392.610	2 784 299.360		R237	36 556.070	2 784 065.330		
L245	37 348.830	2 784 162.960		R238	36 494.370	2 784 079.900		
L246	37 294.100	2 784 112.490		R239	36 451.000	2 784 114.800		
L247	37 191.600	2 784 112.980		R240	36 417.520	2 784 209.660		
L248	37 019.650	2 784 215.090		R241	36 455.630	2 784 294.170		
L249	36 958.230	2 784 232.310		R242	36 579.050	2 784 402.060		
L250	36 890.450	2 784 213.680		R243	36 607.750	2 784 491.210		
L251	36 628.110	2 784 049.570		R244	36 621.700	2 784 745.110		
L252	36 609.680	2 784 040.740		R245	36 613.420	2 784 834.550		
L253	36 550.190	2 784 031.250		R246	36 548.180	2 784 899.490		
L254	36 470.210	2 784 050.940		R247	36 446.360	2 784 920.640		
L255	36 400.740	2 784 114.890		R248	36 335.750	2 784 891.980		

Vel	13	Van	16	P761/09
Sheet		of		

PADRESERWE KOÖRDINATE				/	ROAD RESERVE CO-ORDINATES			
LINKERKANT/LEFT HAND SIDE					REGTERKANT/RIGHT HAND SIDE			
	Y	X	WG	31°	Y	X		
L256	36 379.250	2 784 223.080		R249	36 242.420	2 784 845.550		
L257	36 428.430	2 784 318.400		R250	36 203.160	2 784 831.350		
L258	36 541.170	2 784 416.190		R251	36 127.230	2 784 834.600		
L259	36 574.380	2 784 496.900		R252	36 101.180	2 784 835.610		
L260	36 585.030	2 784 763.940		R253	36 038.180	2 784 831.700		
L261	36 569.650	2 784 818.320		R254	35 986.190	2 784 805.580		
L262	36 514.850	2 784 870.510		R255	35 953.120	2 784 767.180		
L263	36 451.740	2 784 887.980		R256	35 927.560	2 784 710.480		
L264	36 381.210	2 784 868.630		R257	35 910.350	2 784 631.970		
L265	36 254.510	2 784 809.040		R258	35 896.750	2 784 586.210		
L266	36 212.100	2 784 793.310		R259	35 863.800	2 784 540.910		
L267	36 086.510	2 784 796.560		R260	35 812.200	2 784 505.840		
L268	36 052.390	2 784 792.230		R261	35 764.030	2 784 495.260		
L269	36 019.340	2 784 777.830		R262	35 587.010	2 784 505.380		
L270	35 989.600	2 784 752.730		R263	35 510.360	2 784 550.430		
L271	35 965.810	2 784 700.100		R264	35 481.540	2 784 598.550		
L272	35 956.550	2 784 675.130		R265	35 434.270	2 784 840.440		
L273	35 931.980	2 784 573.140		R266	35 391.550	2 784 938.790		
L274	35 894.680	2 784 515.670		R267	35 325.090	2 785 016.960		
L275	35 821.400	2 784 468.790		R268	35 164.880	2 785 161.100		
L276	35 763.370	2 784 455.920		R269	35 122.290	2 785 230.260		
L277	35 715.390	2 784 449.810		R270	35 109.050	2 785 358.170		
L278	35 581.570	2 784 470.720		R271	35 143.790	2 785 504.200		
L279	35 525.240	2 784 490.890		R272	35 143.680	2 785 564.440		
L280	35 484.200	2 784 522.750		R273	35 134.600	2 785 613.640		
L281	35 446.540	2 784 589.710		R274	35 127.300	2 785 633.500		
L282	35 398.150	2 784 841.270		R275	35 076.140	2 785 715.750		
L283	35 360.560	2 784 923.710		R276	35 005.760	2 785 769.430		
L284	35 298.210	2 784 993.760		R277	34 933.120	2 785 794.500		
L285	35 159.020	2 785 105.450		R278	34 843.280	2 785 788.240		
L286	35 090.490	2 785 212.940		R279	34 437.630	2 785 581.640		
L287	35 065.790	2 785 328.990		R280	34 167.400	2 785 389.730		
L288	35 104.980	2 785 524.130		R281	34 059.290	2 785 312.910		
L289	35 099.300	2 785 603.340		R282	33 710.630	2 785 073.880		
L290	35 049.720	2 785 694.050		R283	33 353.560	2 784 826.840		
L291	34 990.550	2 785 737.140		R284	33 066.600	2 784 538.950		
L292	34 919.490	2 785 757.900		R285	32 938.070	2 784 410.290		
L293	34 861.080	2 785 757.510		R286	32 899.660	2 784 371.350		
L294	34 439.800	2 785 519.470		R287	32 857.060	2 784 339.680		
L295	34 184.850	2 785 360.490		R288	32 790.200	2 784 310.420		
L296	34 136.990	2 785 328.610		R289	32 605.390	2 784 265.460		
L297	33 730.170	2 785 047.020		R290	32 259.460	2 784 218.500		
L298	33 376.430	2 784 792.560		R291	32 213.750	2 784 216.740		
L299	33 085.380	2 784 511.000		R292	32 167.040	2 784 236.430		
L300	32 928.940	2 784 356.400		R293	32 092.130	2 784 317.420		
L301	32 921.540	2 784 350.970		R294	32 070.940	2 784 335.220		
L302	32 868.020	2 784 310.950		R295	32 055.500	2 784 350.670		
L303	32 804.160	2 784 276.330		R296	32 011.580	2 784 364.560		
L304	32 609.760	2 784 233.360		R297	31 823.220	2 784 403.730		
L305	32 266.210	2 784 186.430		R298	31 793.450	2 784 408.300		
L306	32 182.560	2 784 187.280		R299	31 716.980	2 784 391.540		

Vel	14	Van	16	P761/09
Sheet		of		

PADRESERWE KOÖRDINATE				/	ROAD RESERVE CO-ORDINATES			
LINKERKANT/LEFT HAND SIDE					REGTERKANT/RIGHT HAND SIDE			
	Y	X	WG	31°	Y	X		
L307	32 148.910	2 784	202.390	R300	31 601.120	2 784	356.910	
L308	32 047.140	2 784	314.850	R301	31 577.700	2 784	344.810	
L309	32 008.110	2 784	333.210	R302	31 411.480	2 784	352.880	
L310	31 991.970	2 784	338.870	R303	31 379.860	2 784	367.120	
L311	31 797.340	2 784	371.270	R304	31 344.220	2 784	380.800	
L312	31 724.690	2 784	351.210	R305	31 298.420	2 784	420.430	
L313	31 566.030	2 784	312.660	R306	31 045.970	2 784	827.660	
L314	31 392.860	2 784	327.640	R307	30 983.910	2 784	936.110	
L315	31 317.890	2 784	352.360	R308	30 957.440	2 784	991.670	
L316	31 296.460	2 784	370.970	R309	30 922.780	2 785	169.480	
L317	31 271.530	2 784	396.070	R310	30 906.820	2 785	274.210	
L318	31 083.970	2 784	705.720	R311	30 839.700	2 785	668.250	
L319	30 952.950	2 784	918.270	R312	30 820.700	2 785	726.840	
L320	30 925.420	2 784	973.870	R313	30 785.220	2 785	791.060	
L321	30 891.820	2 785	168.480	R314	30 730.280	2 785	858.760	
L322	30 834.990	2 785	504.730	R315	30 721.370	2 785	869.340	
L323	30 750.950	2 785	774.410	R316	30 691.400	2 785	892.460	
L324	30 740.780	2 785	790.870	R317	30 646.330	2 785	921.500	
L325	30 703.650	2 785	831.790	R318	30 572.840	2 785	980.540	
L326	30 683.620	2 785	843.140	R319	30 553.750	2 785	999.160	
L327	30 603.480	2 785	905.690	R320	30 406.470	2 786	147.860	
L328	30 546.720	2 785	955.760	R321	30 321.220	2 786	190.020	
L329	30 468.890	2 786	033.150	R322	30 232.940	2 786	195.480	
L330	30 385.380	2 786	121.830	R323	30 203.070	2 786	207.420	
L331	30 319.920	2 786	158.510	R324	30 160.490	2 786	236.640	
L332	30 222.610	2 786	163.970	R325	30 115.080	2 786	324.180	
L333	30 180.650	2 786	173.600	R326	30 080.570	2 786	352.180	
L334	30 128.940	2 786	223.310	R327	29 994.920	2 786	377.090	
L335	30 060.460	2 786	317.860	R328	29 943.440	2 786	367.260	
L336	29 995.930	2 786	343.610	R329	29 868.190	2 786	307.040	
L337	29 955.200	2 786	333.750	R330	29 840.350	2 786	284.920	
L338	29 898.900	2 786	283.200	R331	29 822.140	2 786	267.350	
L339	29 888.320	2 786	265.710	R332	29 601.380	2 786	128.830	
L340	29 842.880	2 786	230.840	R333	29 539.010	2 786	055.450	
L341	29 623.330	2 786	095.400	R334	29 455.330	2 785	904.480	
L342	29 569.740	2 786	036.590	R335	29 396.710	2 785	860.490	
L343	29 478.530	2 785	881.160	R336	29 345.640	2 785	858.950	
L344	29 401.730	2 785	830.940	R337	29 298.330	2 785	868.410	
L345	29 343.840	2 785	823.080	R338	29 204.740	2 785	910.180	
L346	29 285.950	2 785	834.970	R339	29 124.780	2 785	914.540	
L347	29 194.610	2 785	880.600	R340	29 059.840	2 785	884.030	
L348	29 134.530	2 785	883.050	R341	28 791.280	2 785	621.630	
L349	29 080.180	2 785	850.550	R342	28 401.190	2 785	185.490	
L350	28 819.090	2 785	591.260	R343	28 281.150	2 785	048.740	
L351	28 431.940	2 785	167.600	R344	28 067.740	2 784	809.180	
L352	28 347.030	2 785	073.050	R345	27 987.310	2 784	751.660	
L353	28 050.250	2 784	740.800	R346	27 924.240	2 784	730.030	
L354	27 936.050	2 784	693.990	R347	27 827.340	2 784	724.790	
L355	27 875.750	2 784	681.170	R348	27 643.390	2 784	749.790	
L356	27 644.220	2 784	717.280	R349	27 582.410	2 784	739.800	
L357	27 599.010	2 784	706.170	R350	27 430.230	2 784	645.190	

Vel	15	Van	16	P761/09
Sheet		of		

PADRESERWE KOÖRDINATE				/	ROAD RESERVE CO-ORDINATES			
LINKERKANT/LEFT HAND SIDE					REGTERKANT/RIGHT HAND SIDE			
	Y	X	WG	31°	Y	X		
L358	27 441.010	2 784 604.360		R351	27 318.040	2 784 600.150		
L359	27 324.870	2 784 567.540		R352	27 245.870	2 784 570.400		
L360	27 241.410	2 784 512.100		R353	27 015.930	2 784 297.650		
L361	27 073.450	2 784 303.980		R354	27 011.810	2 784 248.380		
L362	27 043.540	2 784 251.970		R355	27 020.470	2 784 188.620		
L363	27 058.500	2 784 185.310		R356	27 035.460	2 784 160.590		
L364	27 168.080	2 784 057.360		R357	27 146.170	2 784 037.660		
L365	27 192.940	2 784 018.460		R358	27 161.440	2 784 005.080		
L366	27 208.580	2 783 936.390		R359	27 170.150	2 783 940.380		
L367	27 189.310	2 783 876.740		R360	27 123.410	2 783 857.570		
L368	27 152.390	2 783 832.670		R361	27 065.670	2 783 820.590		
L369	27 068.110	2 783 789.060		R362	26 577.870	2 783 752.890		
L370	26 584.110	2 783 721.390		R363	26 508.500	2 783 727.120		
L371	26 534.290	2 783 702.480		R364	26 463.810	2 783 665.570		
L372	26 494.110	2 783 652.810		R365	26 452.570	2 783 599.150		
L373	26 484.250	2 783 601.170		R366	26 474.970	2 783 527.350		
L374	26 501.830	2 783 547.040		R367	26 618.680	2 783 363.810		
L375	26 650.170	2 783 384.650		R368	26 651.920	2 783 303.000		
L376	26 683.410	2 783 307.540		R369	26 654.870	2 783 229.630		
L377	26 686.360	2 783 225.410		R370	26 602.260	2 783 039.140		
L378	26 633.790	2 783 032.210		R371	26 595.120	2 782 981.290		
L379	26 626.610	2 782 986.520		R372	26 589.900	2 782 950.560		
L380	26 650.940	2 782 894.540		R373	26 670.430	2 782 766.060		
L381	26 701.920	2 782 771.280		R374	26 678.880	2 782 698.520		
L382	26 710.380	2 782 694.550		R375	26 660.760	2 782 626.190		
L383	26 692.260	2 782 614.350		R376	26 612.140	2 782 551.440		
L384	26 626.360	2 782 512.540		R377	26 412.900	2 782 404.940		
L385	26 581.380	2 782 482.680		R378	26 394.980	2 782 404.280		
L386	26 462.950	2 782 369.790		R379	26 277.860	2 782 390.950		
L387	26 394.610	2 782 355.910		R380	26 205.260	2 782 366.770		
L388	26 278.740	2 782 359.460		R381	25 906.160	2 782 079.180		
L389	26 219.550	2 782 330.710		R382	25 808.970	2 782 025.290		
L390	25 930.850	2 782 053.170		R383	25 709.600	2 782 011.590		
L391	25 817.420	2 781 993.810		R384	25 413.940	2 782 057.920		
L392	25 708.380	2 781 980.080		R385	25 342.300	2 782 107.450		
L393	25 407.560	2 782 026.400		R386	25 273.400	2 782 204.790		
L394	25 316.490	2 782 075.970		R387	25 202.100	2 782 260.900		
L395	25 241.880	2 782 178.770		R388	25 030.880	2 782 294.680		
L396	25 180.460	2 782 229.400		R389	24 966.470	2 782 330.010		
L397	25 021.270	2 782 263.190		R390	24 921.890	2 782 382.270		
L398	24 944.030	2 782 298.530		R391	24 865.970	2 782 541.310		
L399	24 891.470	2 782 357.910		R392	24 821.310	2 782 607.650		
L400	24 834.500	2 782 526.690		R393	24 751.520	2 782 648.920		
L401	24 769.270	2 782 597.850		R394	24 730.000	2 782 650.030		
L402	24 737.130	2 782 616.240		R395	24 680.560	2 782 656.100		
L403	24 687.990	2 782 618.040		R396	24 608.790	2 782 624.380		
L404	24 627.880	2 782 591.710		R397	24 554.880	2 782 573.060		
L405	24 586.440	2 782 544.880		R398	24 530.000	2 782 532.070		
L406	24 562.740	2 782 509.000						

Vel 16 Van 16
Sheet of

P761/09