

Government Gazette Staatskoerant

REPUBLIC OF SOUTH AFRICA
REPUBLIEK VAN SUID-AFRIKA

Vol. 544

Pretoria, 25 October
Oktober 2010

No. 33644

IMPORTANT NOTICE

The Government Printing Works will not be held responsible for faxed documents not received due to errors on the fax machine or faxes received which are unclear or incomplete. Please be advised that an "OK" slip, received from a fax machine, will not be accepted as proof that documents were received by the GPW for printing. If documents are faxed to the GPW it will be the sender's responsibility to phone and confirm that the documents were received in good order.

Furthermore the Government Printing Works will also not be held responsible for cancellations and amendments which have not been done on original documents received from clients.

CONTENTS**INHOUD**

<i>No.</i>	<i>Page No.</i>	<i>Gazette No.</i>	<i>No.</i>	<i>Bladsy No.</i>	<i>Koerant No.</i>
GOVERNMENT NOTICE			GOEWERMENSKENNISGEWING		
Transport, Department of			Vervoer, Departement van		
<i>Government Notice</i>			<i>Goewermenskennisgewing</i>		
918			918		
South African National Roads Agency Limited and the National Roads Act (7/1998): The South African National Roads Agency Limited: Declaration amendment of National Road N14 Section 12: Amendment of Declaration No. 217 of 2006	3	33644	Suid-Afrikaanse Nasionale Padagentskap Beperk en die Nasionale Paaie Wet (7/1998): Die Suid-Afrikaanse Nasionale Padagentskap Beperk: Verklaring wysiging van Nasionale Pad N14 Seksie 12: Wysiging van Verklaring No. 217 van 2006	4	33644

GOVERNMENT NOTICE

DEPARTMENT OF TRANSPORT

No. 918

25 October 2010

THE SOUTH AFRICAN NATIONAL ROADS AGENCY LIMITED


Registration No: 98/09584/06

DECLARATION AMENDMENT OF NATIONAL ROAD N14 SECTION 12

AMENDMENT OF DECLARATION NO. 217 OF 2006

By virtue of section 40(1)(b) of the South African National Roads Agency Limited and the National Roads Act, 1998 (Act No. 7 of 1998), I hereby amend Declaration No. 217 of 2006 by substituting the Annexure paragraph (X), with the subjoined sheets 1 to 15 of Plan No. P648/08.

(National Road N14 Section 12: Coligny - Ventersdorp)


MINISTER OF TRANSPORT
(Acting Minister)
38709/2010

GOEWERMENTSKENNISGEWING

DEPARTEMENT VAN VERVOER

No. 918

25 Oktober 2010

**DIE SUID-AFRIKAANSE NASIONALE
PADAGENTSKAP BEPERK**


Registrasie No: 98/09584/06

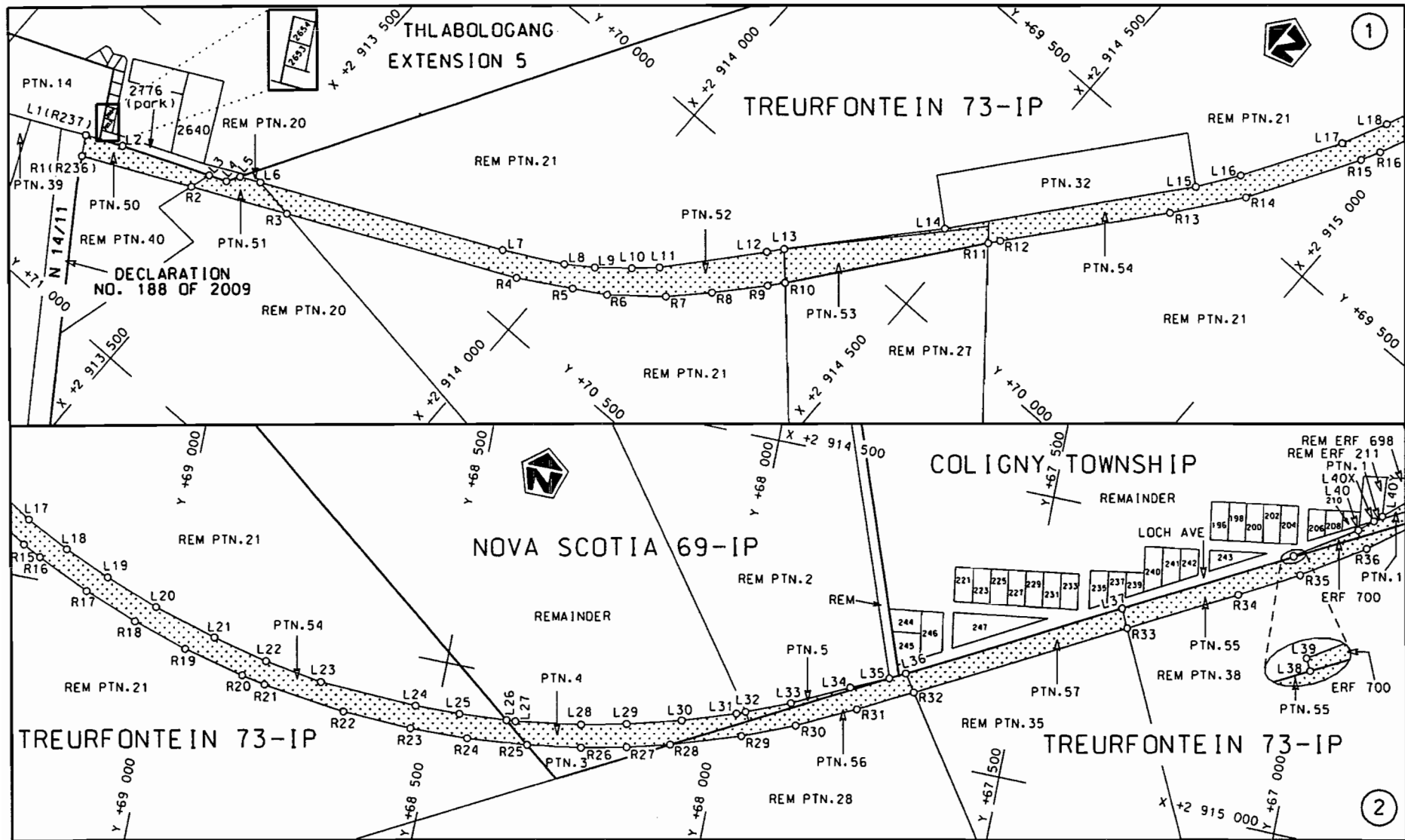
VERKLARING WYSIGING VAN NASIONALE PAD N14 SEKSIE 12.

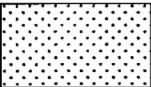
WYSIGING VAN VERKLARING NO. 217 VAN 2006

Kragtens Artikel 40(1)(b) van die Suid-Afrikaanse Nasionale Padagentskap Beperk en die Nasionale Paaie Wet, 1998 (Wet no.7 van 1998), wysig ek hiermee Verklaring no. 217 van 2006 deur die Bylae paragraaf (X), te vervang met meegaande velle 1 tot 15 van Plan no. P648/08.

(Nasionale Pad N14 Seksie 12 Coligny - Ventersdorp)

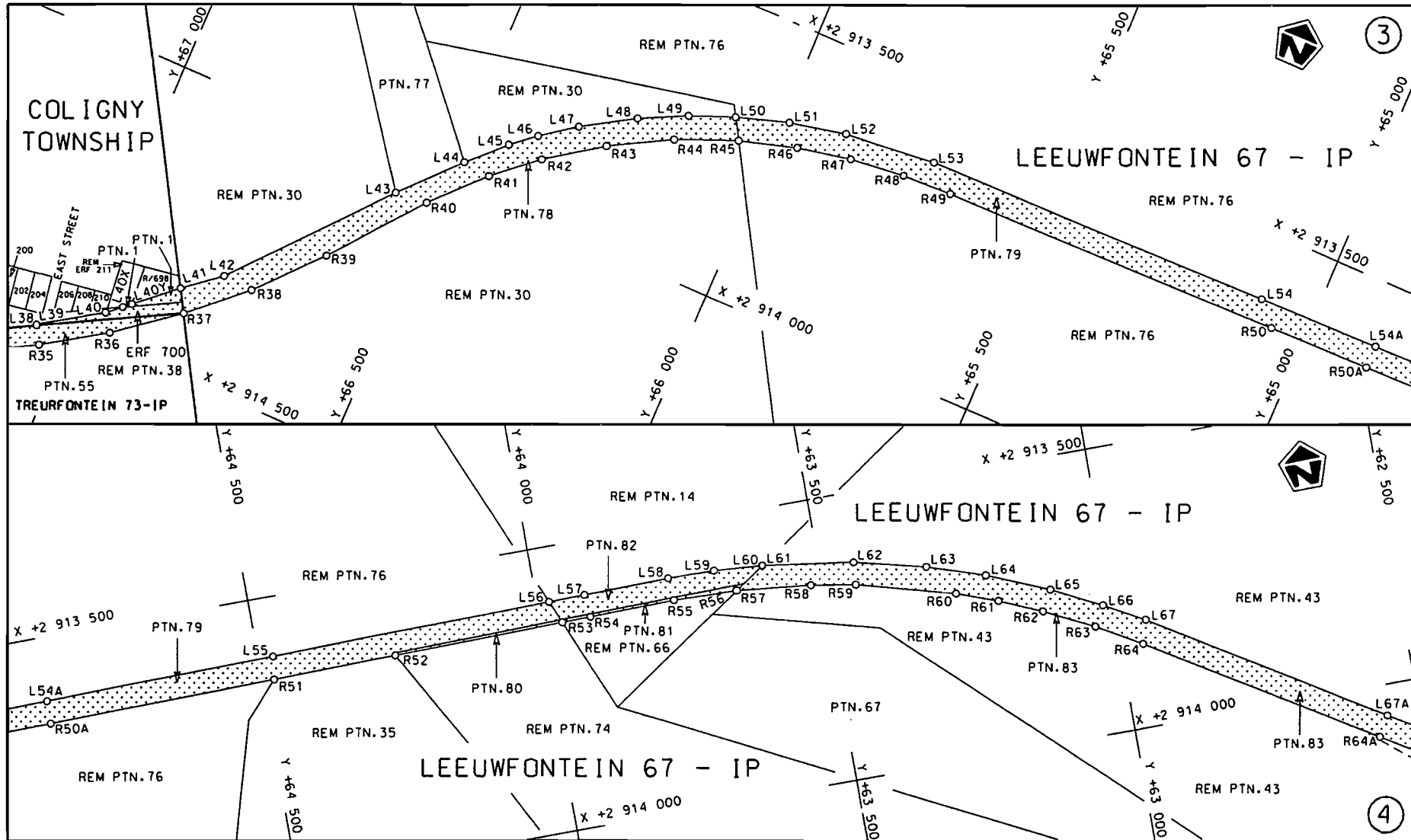

MINISTER VAN VERVOER (Rotating Minister)
35/09/2010




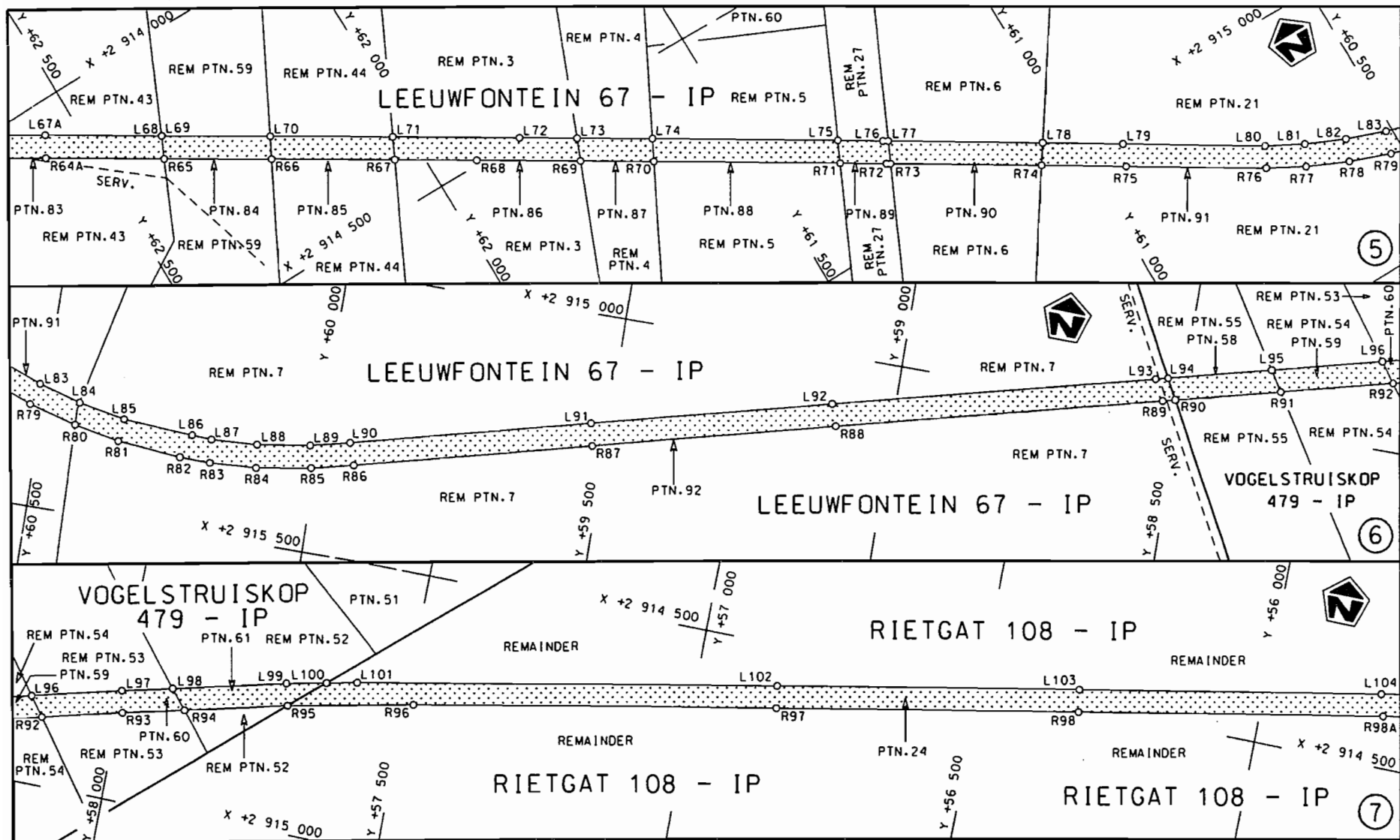
Suid-Afrikaanse Padagentskop Bpk. South African National Roads Agency Ltd.	Die figuur getoon The figure shown	 steldie padreserwe voor van 'n gedeelte represents the road reserve of a portion van Nasionale Roete of National Route	Vel van Sheet 1 of 15 P P648/08
N14/11 Section 12			No. 33644 5


STAATSKOERANT, 25 OKTOBER 2010

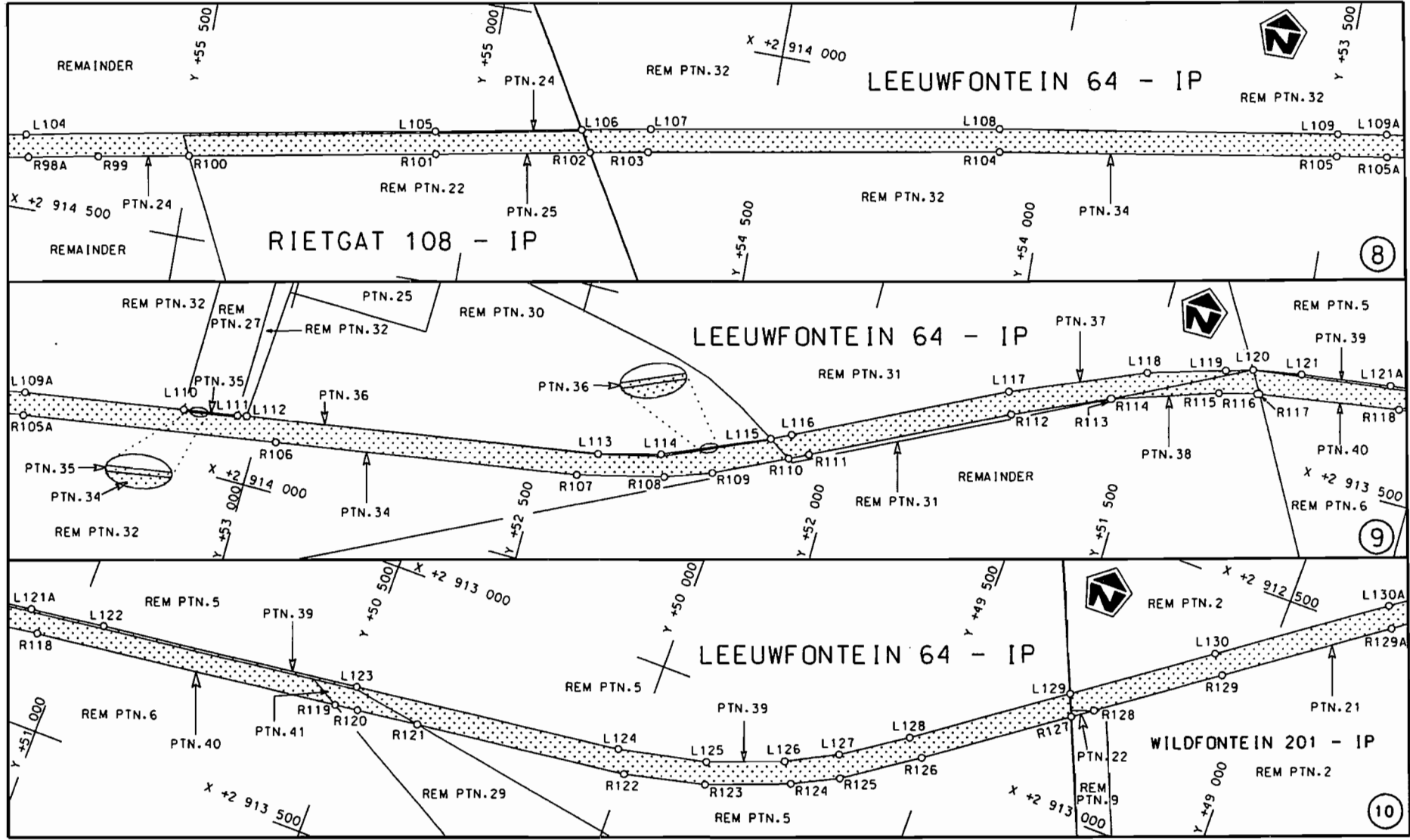
No. 33644 5



<p>Suid-Afrikaanse Padogenskap Bpk. South African National Roads Agency Ltd.</p>	<p>Die figuur getoon The figure shown</p> 	<p>steldie padreserwe voor van 'n gedeelte represents the road reserve of a portion van Nasionale Roete of National Route</p> <p>N14</p> <p>Seksie Section</p> <p>12</p>	<p>Vel Sheet</p> <p>2 of</p> <p>15</p> <p>P P648/08</p>
--	--	--	---

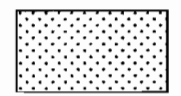


Suid-Afrikaanse Padagentskap Bpk. South African National Roads Agency Ltd.	Die figuur getoon The figure shown	 steldie padreserve voor van 'n gedeelte represents the road reserve of a portion van Nasionale Roete of National Route	Vel Sheet 3 of 15 P P648/08
		N14 Seksie Section 12	



Suid-Afrikaanse Padagentskap Bpk.
South African National Roads Agency Ltd.

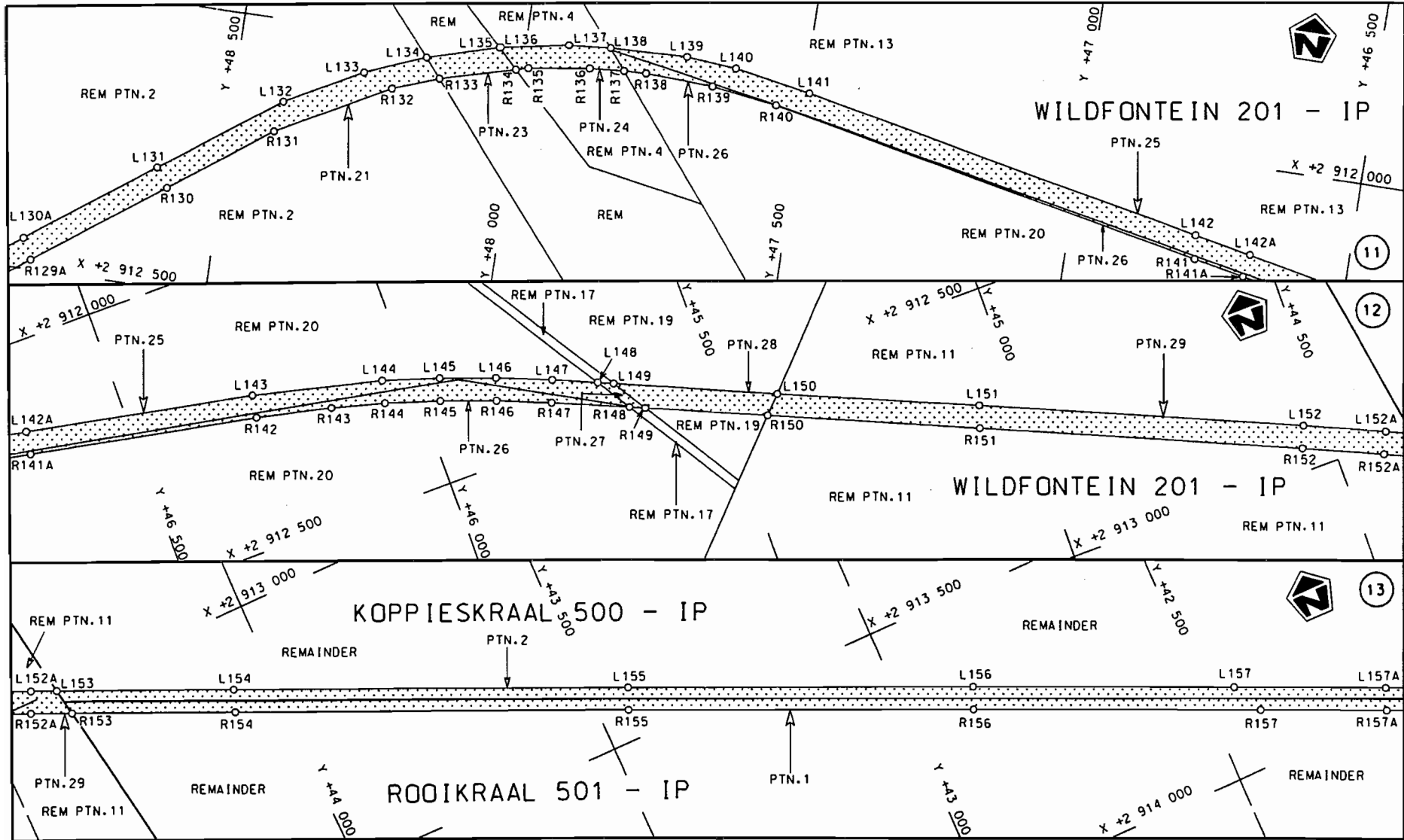
Die figuur getoon
The figure shown



stel die padreserwe voor van 'n gedeelte
represents the road reserve of a portion
van Nasionale Roete Seksie
of National Route N14 Section 12

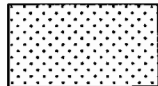
Vel van
Sheet 4 of 15

P P648/08



Suid-Afrikaanse Padogenskop Bpk.
South African National Roads Agency Ltd.

Die figuur getoon
The figure shown

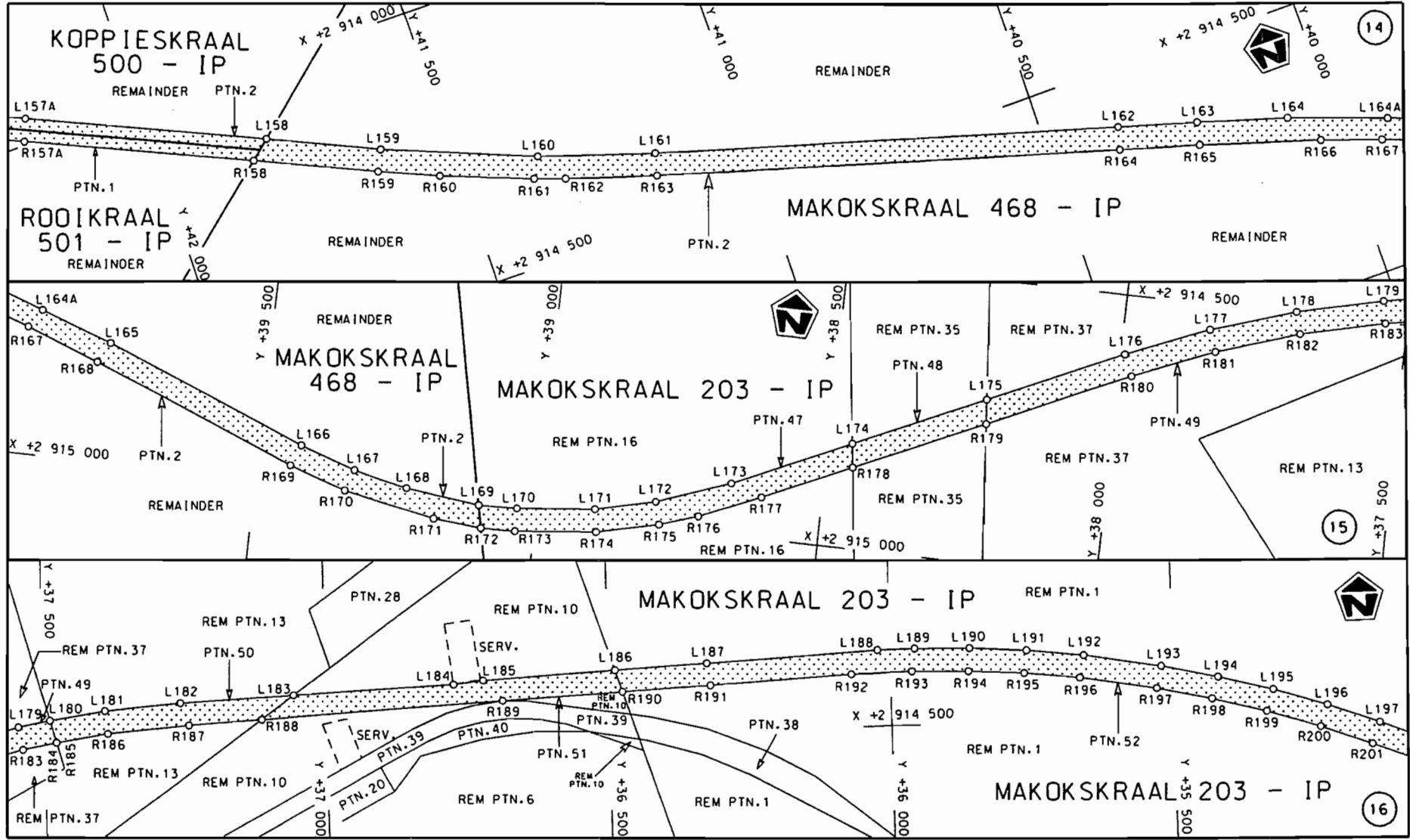



steldie padreserwe voor van 'n gedeelte
represents the road reserve of a portion
van Nasionale Roete
of National Route

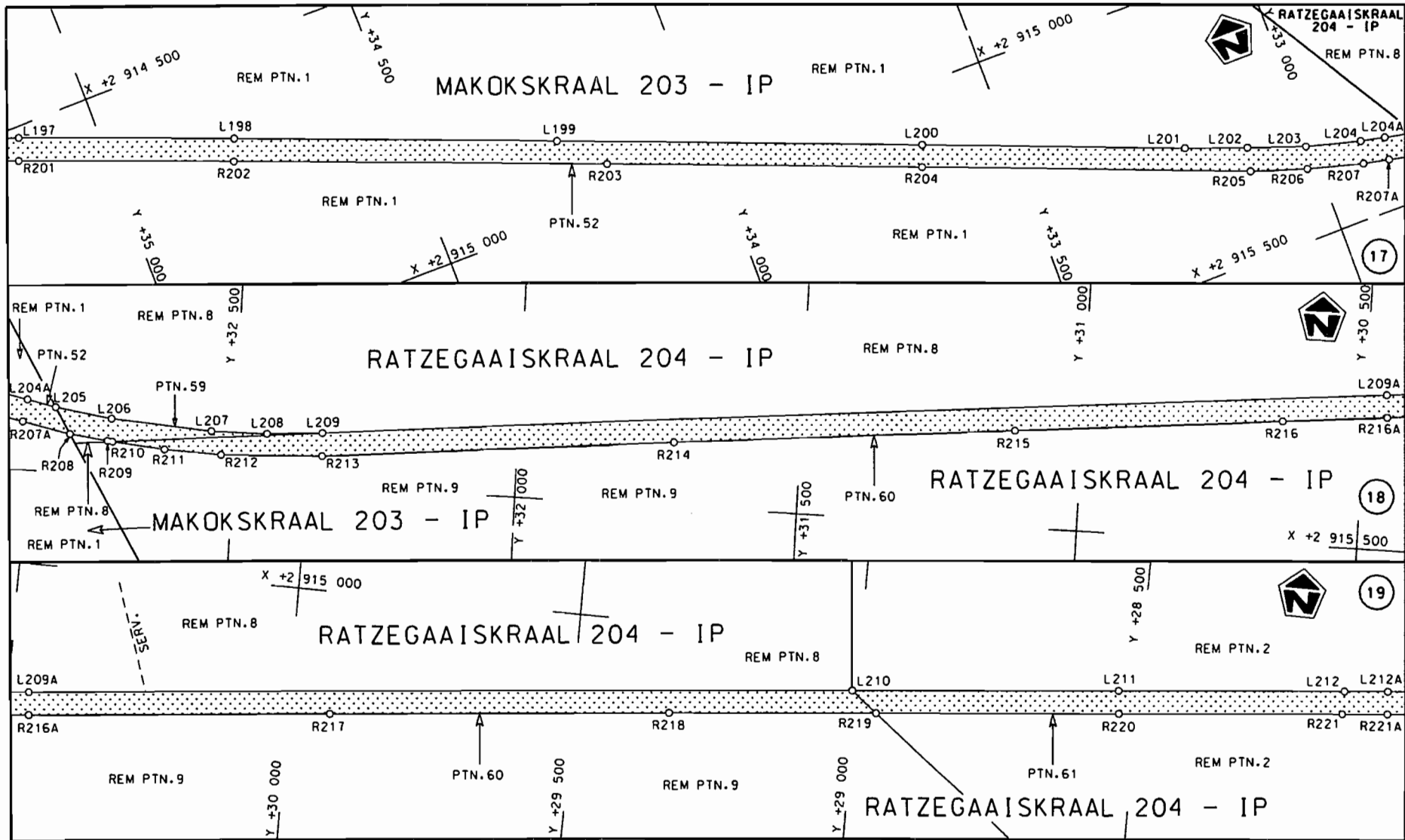
N14
Seksie
Section 12

Vel van
Sheet 5 of 15

P P648/08



<p>Suid-Afrikaanse Padagentskap Bpk. South African National Roads Agency Ltd.</p>	<p>Die figuur getoon The figure shown</p>	 <p>steldie padreserwe voor van 'n gedeelte represents the road reserve of a portion van Nasionale Roete N14 of National Route N14</p>	<p>Vel Sheet 6 of 15 P P648/08</p>
<p>Seksie 12</p>			<p>12</p>



Suid-Afrikaanse Padagentskop Bpk.
South African National Roads Agency Ltd.

Die figuur getoon
The figure shown

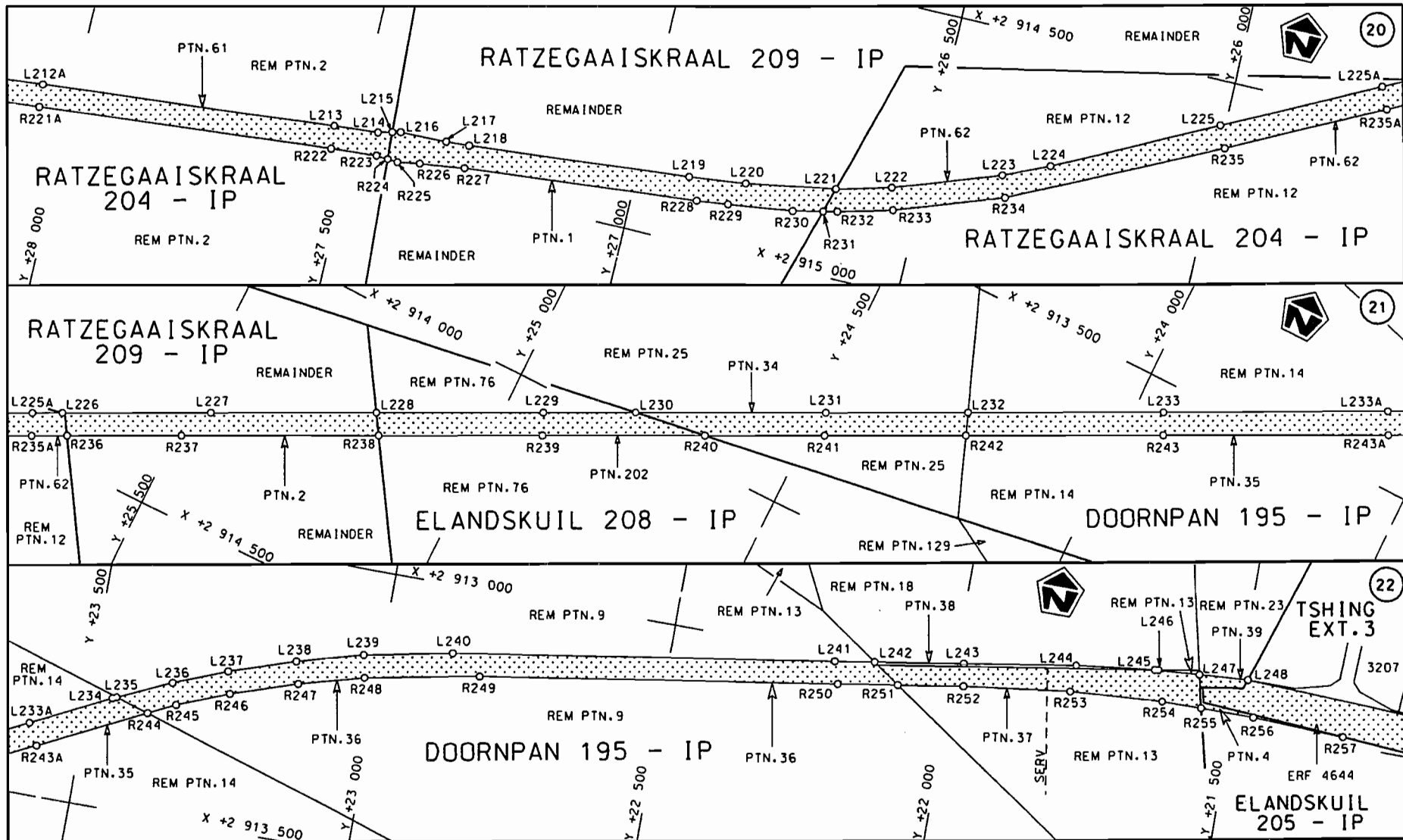


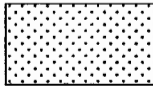
steldie padreserwe voor van 'n gedeelte
represents the road reserve of a portion
van Nasionale Roete N14
of National Route N14

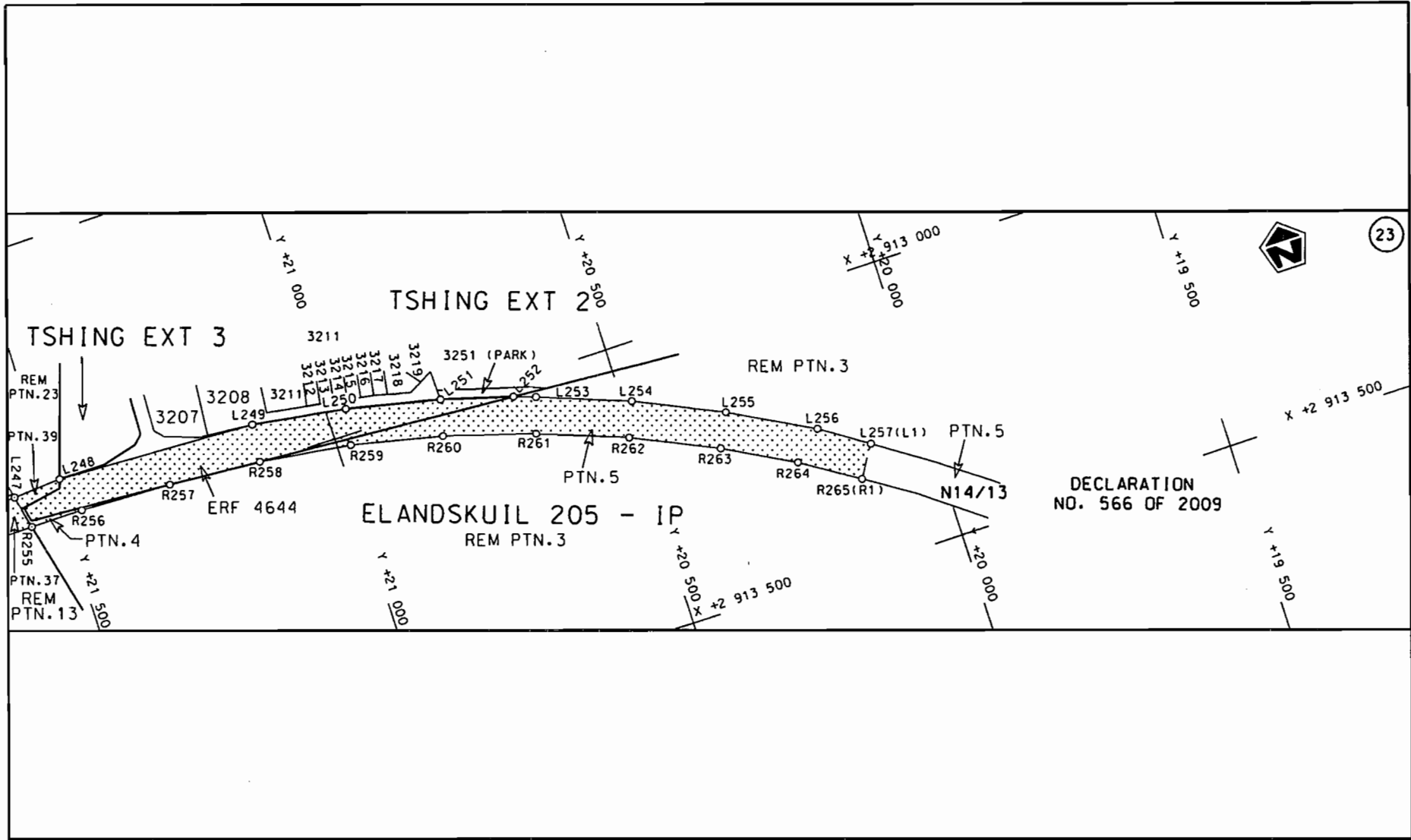
Seksie 12
Section 12

Vel 7 van
Sheet 7 of 15

P P648/08



<p>Suid-Afrikaanse Padogentskop Bpk. South African National Roads Agency Ltd.</p>	<p>Die figuur getoon The figure shown</p>	<p>  steldie padreserwe voor van 'n gedeelte represents the road reserve of a portion van Nasionale Roete of National Route </p>	<p> Vel 8 von Sheet 8 of 15 P P648/08 </p>
<p>N14 Section 12</p>			



STAATSKOERANT, 25 OKTOBER 2010

No. 33644 13

Suid-Afrikaanse Padraad
South African Roads Board

Die figuur getoon
The figure shown



steldie padreserwe voor van 'n gedeelte
represents the road reserve of a portion
van Nasionale Raete
of National Route

Seksie
Section

N14 12

Vel van
Sheet 9 of 15

P P648/08

PADRESERWE KOÖRDINATE / ROAD RESERVE CO-ORDINATES									
LINKERKANT/LEFT HAND SIDE			REGTERKANT/RIGHT HAND SIDE						
	Y	X	WG 27°		Y	X			
L1	70	732.824	2 913	209.843	R1	70	764.400	2 913	228.600
L2	70	703.750	2 913	271.170	R2	70	678.050	2 913	410.370
L3	70	642.110	2 913	421.520	R3	70	601.890	2 913	570.660
L4	70	629.670	2 913	451.810	R4	70	421.160	2 913	951.080
L5	70	607.500	2 913	464.890	R5	70	369.850	2 914	038.270
L6	70	591.320	2 913	499.020	R6	70	338.770	2 914	090.910
L7	70	400.910	2 913	900.600	R7	70	272.900	2 914	171.160
L8	70	347.270	2 913	999.540	R8	70	213.890	2 914	227.410
L9	70	316.380	2 914	043.340	R9	70	138.500	2 914	294.430
L10	70	275.040	2 914	092.960	R10	70	114.580	2 914	314.370
L11	70	241.540	2 914	129.010	R11	69	824.410	2 914	540.760
L12	70	094.890	2 914	254.660	R12	69	806.960	2 914	554.380
L13	70	071.020	2 914	274.550	R13	69	570.350	2 914	749.660
L14	69	855.760	2 914	465.620	R14	69	461.480	2 914	833.360
L15	69	505.780	2 914	753.910	R15	69	277.110	2 914	944.170
L16	69	438.440	2 914	800.540	R16	69	244.480	2 914	960.650
L17	69	276.690	2 914	899.670	R17	69	151.550	2 915	002.620
L18	69	200.000	2 914	937.420	R18	69	056.950	2 915	038.220
L19	69	119.460	2 914	971.930	R19	68	959.840	2 915	067.920
L20	69	024.900	2 915	006.360	R20	68	850.500	2 915	093.620
L21	68	912.490	2 915	038.140	R21	68	808.230	2 915	101.660
L22	68	813.580	2 915	060.430	R22	68	661.720	2 915	120.270
L23	68	710.070	2 915	077.000	R23	68	540.440	2 915	125.570
L24	68	539.410	2 915	085.300	R24	68	438.820	2 915	122.760
L25	68	460.650	2 915	083.890	R25	68	331.899	2 915	112.733
L26	68	376.400	2 915	077.820	R26	68	237.449	2 915	098.604
L27	68	360.500	2 915	076.680	R27	68	159.520	2 915	082.046
L28	68	245.140	2 915	059.230	R28	68	084.881	2 915	062.301
L29	68	167.300	2 915	042.530	R29	67	963.920	2 915	022.260
L30	68	073.130	2 915	017.100	R30	67	872.290	2 914	984.660
L31	67	980.440	2 914	985.830	R31	67	771.240	2 914	935.440
L32	67	964.710	2 914	979.400	R32	67	677.870	2 914	885.650
L33	67	888.370	2 914	948.230	R33	67	326.950	2 914	698.510
L34	67	789.990	2 914	900.080	R34	67	145.250	2 914	601.610
L35	67	725.090	2 914	870.430	R35	67	043.460	2 914	545.960
L36	67	698.310	2 914	856.140	R36	66	937.100	2 914	477.000
L37	67	342.570	2 914	666.350	R37	66	831.180	2 914	394.690
L38	67	061.260	2 914	516.260	R38	66	737.780	2 914	309.470
L39	67	061.790	2 914	515.230	R39	66	640.190	2 914	201.070
L40	66	957.820	2 914	447.810	R40	66	515.240	2 914	045.850
L40X	66	933.780	2 914	426.790	R41	66	433.980	2 913	960.250
L40Y	66	920.970	2 914	415.600	R42	66	359.660	2 913	895.960
L41	66	853.560	2 914	356.620	R43	66	264.070	2 913	829.020
L42	66	791.770	2 914	305.760	R44	66	159.540	2 913	771.480
L43	66	571.320	2 914	051.190	R45	66	055.780	2 913	728.090
L44	66	482.820	2 913	954.820	R46	65	956.390	2 913	697.850
L45	66	423.550	2 913	896.170	R47	65	860.510	2 913	678.110
L46	66	381.560	2 913	861.600	R48	65	763.460	2 913	667.320
L47	66	321.690	2 913	818.300	R49	65	675.730	2 913	664.120
L48	66	232.910	2 913	763.950	R50	65	061.570	2 913	653.750
L49	66	152.590	2 913	723.860	R51	64	478.520	2 913	644.590

Vel	10	Van	15	P648/08
Sheet		of		

PADRESERWE KOÖRDINATE / ROAD RESERVE CO-ORDINATES									
LINKERKANT/LEFT HAND SIDE					REGTERKANT/RIGHT HAND SIDE				
	Y	X	WG 27°		Y	X			
L50	66 076.800	2 913 693.070		R52	64 259.710	2 913 641.190			
L51	65 986.080	2 913 663.980		R53	63 961.040	2 913 636.210			
L52	65 885.200	2 913 641.290		R54	63 910.680	2 913 635.050			
L53	65 723.730	2 913 624.900		R55	63 761.510	2 913 632.300			
L54	65 096.800	2 913 614.340		R56	63 651.470	2 913 634.760			
L55	64 473.450	2 913 604.360		R57	63 650.200	2 913 634.890			
L56	63 977.800	2 913 596.530		R58	63 520.200	2 913 648.700			
L57	63 914.180	2 913 595.520		R59	63 440.780	2 913 662.040			
L58	63 764.840	2 913 592.980		R60	63 270.250	2 913 708.370			
L59	63 683.840	2 913 593.540		R61	63 198.830	2 913 734.120			
L60	63 598.900	2 913 599.350		R62	63 124.350	2 913 765.960			
L61	63 598.040	2 913 599.480		R63	63 036.790	2 913 809.020			
L62	63 437.630	2 913 622.720		R64	62 959.190	2 913 853.440			
L63	63 312.950	2 913 653.180		R65	62 396.110	2 914 200.820			
L64	63 212.800	2 913 686.250		R66	62 233.260	2 914 301.080			
L65	63 104.600	2 913 730.950		R67	62 046.410	2 914 416.120			
L66	63 017.250	2 913 774.290		R68	61 923.140	2 914 492.010			
L67	62 947.140	2 913 812.820		R69	61 766.550	2 914 588.620			
L68	62 379.450	2 914 164.300		R70	61 655.250	2 914 657.280			
L69	62 378.970	2 914 164.600		R71	61 373.040	2 914 831.390			
L70	62 214.770	2 914 265.770		R72	61 302.170	2 914 875.110			
L71	62 028.680	2 914 380.430		R73	61 295.680	2 914 879.110			
L72	61 838.280	2 914 497.750		R74	61 068.030	2 915 019.470			
L73	61 751.210	2 914 551.410		R75	60 940.010	2 915 098.400			
L74	61 636.730	2 914 621.960		R76	60 727.290	2 915 229.340			
L75	61 355.920	2 914 795.030		R77	60 665.400	2 915 263.310			
L76	61 286.830	2 914 837.610		R78	60 594.710	2 915 295.230			
L77	61 278.620	2 914 842.680		R79	60 523.290	2 915 321.520			
L78	61 045.750	2 914 986.410		R80	60 437.440	2 915 344.610			
L79	60 924.260	2 915 061.390		R81	60 355.430	2 915 360.660			
L80	60 708.690	2 915 194.350		R82	60 242.230	2 915 370.590			
L81	60 646.850	2 915 227.900		R83	60 187.940	2 915 371.680			
L82	60 579.400	2 915 258.330		R84	60 105.270	2 915 367.040			
L83	60 511.010	2 915 283.450		R85	60 007.330	2 915 351.000			
L84	60 435.560	2 915 304.480		R86	59 933.900	2 915 333.680			
L85	60 351.350	2 915 320.750		R87	59 522.830	2 915 230.500			
L86	60 227.390	2 915 328.930		R88	59 100.620	2 915 123.640			
L87	60 192.070	2 915 331.120		R89	58 531.830	2 914 979.610			
L88	60 110.120	2 915 326.480		R90	58 509.750	2 914 974.050			
L89	60 015.400	2 915 312.080		R91	58 328.040	2 914 928.300			
L90	59 946.820	2 915 296.060		R92	58 132.830	2 914 879.160			
L91	59 531.500	2 915 191.190		R93	57 991.650	2 914 843.620			
L92	59 113.110	2 915 085.610		R94	57 883.650	2 914 817.800			
L93	58 550.920	2 914 943.880		R95	57 704.850	2 914 775.060			
L94	58 529.040	2 914 938.360		R96	57 485.430	2 914 730.310			
L95	58 350.270	2 914 893.270		R97	56 851.640	2 914 611.190			
L96	58 158.230	2 914 844.840		R98	56 319.780	2 914 510.820			
L97	57 999.950	2 914 804.920		R99	55 662.500	2 914 386.680			
L98	57 911.450	2 914 783.620		R100	55 503.330	2 914 356.760			
L99	57 714.240	2 914 736.160		R101	55 073.510	2 914 275.980			
L100	57 643.660	2 914 721.410		R102	54 806.520	2 914 225.600			

Vel
Sheet11
of

Van 15

P648/08

PADRESERWE KOÖRDINATE / ROAD RESERVE CO-ORDINATES							
LINKERKANT/LEFT HAND SIDE				REGTERKANT/RIGHT HAND SIDE			
	Y	X	WG 27°		Y	X	
L101	57 590.850	2 914	710.380	R103	54 706.010	2 914	206.640
L102	56 857.950	2 914	571.590	R104	54 089.210	2 914	094.300
L103	56 325.920	2 914	471.310	R105	53 497.170	2 913	998.910
L104	55 794.710	2 914	371.420	R106	52 964.940	2 913	913.200
L105	55 081.130	2 914	237.410	R107	52 436.010	2 913	828.580
L106	54 827.870	2 914	189.410	R108	52 286.180	2 913	791.400
L107	54 707.880	2 914	166.670	R109	52 205.750	2 913	761.500
L108	54 096.220	2 914	054.920	R110	52 082.210	2 913	701.530
L109	53 501.960	2 913	960.030	R111	52 048.960	2 913	685.390
L110	53 136.710	2 913	901.080	R112	51 719.500	2 913	522.400
L111	53 042.000	2 913	885.800	R113	51 557.590	2 913	450.560
L112	53 026.090	2 913	882.600	R114	51 555.370	2 913	449.840
L113	52 409.800	2 913	783.100	R115	51 372.930	2 913	390.760
L114	52 302.020	2 913	754.570	R116	51 307.180	2 913	374.720
L115	52 121.670	2 913	676.510	R117	51 302.750	2 913	374.050
L116	52 087.750	2 913	660.140	R118	51 057.770	2 913	336.820
L117	51 733.980	2 913	484.760	R119	50 519.780	2 913	268.080
L118	51 506.340	2 913	388.940	R120	50 478.800	2 913	262.840
L119	51 371.180	2 913	349.220	R121	50 370.670	2 913	249.100
L120	51 324.690	2 913	335.580	R122	49 999.160	2 913	201.890
L121	51 239.310	2 913	321.200	R123	49 858.030	2 913	168.390
L122	50 952.560	2 913	283.260	R124	49 717.070	2 913	113.090
L123	50 494.650	2 913	224.560	R125	49 638.880	2 913	073.330
L124	50 024.000	2 913	164.300	R126	49 515.210	2 912	987.790
L125	49 869.790	2 913	130.110	R127	49 292.690	2 912	827.040
L126	49 740.820	2 913	080.050	R128	49 259.440	2 912	803.020
L127	49 654.720	2 913	034.360	R129	49 067.660	2 912	664.470
L128	49 547.810	2 912	961.950	R130	48 594.670	2 912	323.160
L129	49 308.960	2 912	789.390	R131	48 419.720	2 912	198.350
L130	49 092.570	2 912	633.060	R132	48 224.060	2 912	094.690
L131	48 617.170	2 912	290.070	R133	48 143.660	2 912	064.620
L132	48 410.410	2 912	144.830	R134	48 011.120	2 912	029.490
L133	48 276.290	2 912	073.670	R135	47 989.610	2 912	023.790
L134	48 171.510	2 912	031.690	R136	47 883.130	2 912	008.470
L135	48 045.810	2 911	995.310	R137	47 822.480	2 912	004.000
L136	48 043.090	2 911	994.520	R138	47 783.320	2 912	002.510
L137	47 924.790	2 911	973.250	R139	47 664.130	2 912	006.720
L138	47 852.020	2 911	967.580	R140	47 547.410	2 912	022.060
L139	47 716.030	2 911	963.180	R141	46 771.810	2 912	176.290
L140	47 626.850	2 911	969.730	R142	46 281.310	2 912	273.970
L141	47 491.590	2 911	992.640	R143	46 149.940	2 912	303.910
L142	46 776.620	2 912	134.600	R144	46 059.240	2 912	328.650
L143	46 274.470	2 912	234.730	R145	45 966.220	2 912	358.490
L144	46 050.350	2 912	289.950	R146	45 871.910	2 912	392.890
L145	45 953.870	2 912	320.760	R147	45 781.160	2 912	429.860
L146	45 859.160	2 912	355.090	R148	45 655.290	2 912	484.230
L147	45 766.360	2 912	392.760	R149	45 629.480	2 912	495.380
L148	45 693.400	2 912	424.530	R150	45 429.480	2 912	581.780
L149	45 667.510	2 912	435.810	R151	45 081.680	2 912	732.080
L150	45 400.320	2 912	552.150	R152	44 552.940	2 912	960.380
L151	45 068.910	2 912	694.050	R153	44 353.400	2 913	048.030

Vel	12	Van 15	P648/08
Sheet		of	

PADRESERWE KOÖRDINATE / ROAD RESERVE CO-ORDINATES						
LINKERKANT/LEFT HAND SIDE				REGTERKANT/RIGHT HAND SIDE		
	Y	X	WG 27°		Y	X
L152	44 537.750	2 912 923.370		R154	44 086.050	2 913 165.470
L153	44 361.580	2 913 000.850		R155	43 448.640	2 913 446.840
L154	44 072.250	2 913 128.100		R156	42 885.570	2 913 695.380
L155	43 433.070	2 913 410.180		R157	42 416.220	2 913 902.980
L156	42 869.500	2 913 658.370		R158	41 837.290	2 914 157.410
L157	42 443.770	2 913 846.840		R159	41 633.430	2 914 247.720
L158	41 803.940	2 914 129.090		R160	41 533.730	2 914 290.070
L159	41 616.440	2 914 211.960		R161	41 378.250	2 914 348.980
L160	41 358.970	2 914 313.610		R162	41 324.580	2 914 367.370
L161	41 160.670	2 914 376.160		R163	41 170.670	2 914 414.750
L162	40 366.450	2 914 601.180		R164	40 376.680	2 914 639.520
L163	40 230.920	2 914 639.650		R165	40 239.770	2 914 678.610
L164	40 077.050	2 914 685.820		R166	40 033.220	2 914 742.330
L165	39 782.030	2 914 789.910		R167	39 930.410	2 914 777.400
L166	39 425.670	2 914 929.260		R168	39 801.410	2 914 825.240
L167	39 327.090	2 914 961.780		R169	39 441.160	2 914 965.960
L168	39 231.790	2 914 982.910		R170	39 340.080	2 914 999.640
L169	39 102.920	2 914 998.210		R171	39 178.580	2 915 030.580
L170	39 035.030	2 914 996.230		R172	39 094.810	2 915 037.390
L171	38 896.880	2 914 981.620		R173	39 034.350	2 915 036.160
L172	38 792.040	2 914 956.870		R174	38 890.650	2 915 021.080
L173	38 663.530	2 914 909.070		R175	38 782.250	2 914 995.750
L174	38 456.920	2 914 815.320		R176	38 714.780	2 914 973.440
L175	38 229.040	2 914 711.920		R177	38 607.570	2 914 927.610
L176	37 992.850	2 914 604.750		R178	38 451.580	2 914 856.870
L177	37 847.540	2 914 545.290		R179	38 225.450	2 914 754.330
L178	37 698.460	2 914 497.870		R180	37 977.060	2 914 641.490
L179	37 546.200	2 914 461.750		R181	37 834.110	2 914 583.080
L180	37 489.750	2 914 451.520		R182	37 688.120	2 914 536.410
L181	37 391.830	2 914 437.570		R183	37 538.920	2 914 501.140
L182	37 258.830	2 914 426.630		R184	37 478.940	2 914 490.270
L183	37 056.950	2 914 418.400		R185	37 478.540	2 914 490.200
L184	36 773.910	2 914 406.860		R186	37 387.710	2 914 477.370
L185	36 722.120	2 914 400.870		R187	37 244.320	2 914 465.920
L186	36 488.280	2 914 389.110		R188	37 114.800	2 914 459.440
L187	36 326.470	2 914 380.960		R189	36 688.430	2 914 437.760
L188	36 022.310	2 914 365.990		R190	36 475.720	2 914 427.650
L189	35 956.820	2 914 365.160		R191	36 320.870	2 914 420.050
L190	35 860.190	2 914 366.780		R192	36 069.560	2 914 407.400
L191	35 758.450	2 914 373.240		R193	35 962.670	2 914 404.920
L192	35 656.340	2 914 384.800		R194	35 862.830	2 914 407.200
L193	35 520.240	2 914 407.690		R195	35 763.710	2 914 412.930
L194	35 420.860	2 914 429.860		R196	35 664.130	2 914 424.130
L195	35 324.360	2 914 455.280		R197	35 529.060	2 914 446.600
L196	35 228.050	2 914 485.720		R198	35 432.360	2 914 468.070
L197	35 136.550	2 914 519.080		R199	35 336.860	2 914 493.370
L198	34 779.380	2 914 657.770		R200	35 241.370	2 914 523.460
L199	34 247.440	2 914 864.700		R201	35 150.640	2 914 556.610
L200	33 644.160	2 915 099.250		R202	34 794.120	2 914 694.970
L201	33 210.080	2 915 268.100		R203	34 178.740	2 914 934.270
L202	33 106.240	2 915 306.130		R204	33 658.360	2 915 136.080

Vel	13	Van 15	P648/08
Sheet		of	

PADRESERWE KOÖRDINATE / ROAD RESERVE CO-ORDINATES							
LINKERKANT/LEFT HAND SIDE			REGTERKANT/RIGHT HAND SIDE				
	Y	X	WG 27°	Y	X		
L203	33 008.390	2 915	340.650	R205	33 115.740	2 915	347.190
L204	32 912.960	2 915	366.520	R206	33 019.660	2 915	378.980
L205	32 819.060	2 915	385.940	R207	32 922.470	2 915	405.380
L206	32 718.520	2 915	401.100	R208	32 790.820	2 915	431.810
L207	32 541.190	2 915	413.460	R209	32 724.000	2 915	440.690
L208	32 442.410	2 915	412.420	R210	32 715.220	2 915	441.490
L209	32 342.540	2 915	405.840	R211	32 622.650	2 915	449.950
L210	29 007.260	2 915	086.750	R212	32 522.080	2 915	454.310
L211	28 534.990	2 915	041.080	R213	32 341.110	2 915	446.510
L212	28 134.560	2 915	002.770	R214	31 722.560	2 915	387.290
L213	27 539.660	2 914	945.780	R215	31 119.780	2 915	329.130
L214	27 459.690	2 914	938.000	R216	30 645.320	2 915	283.530
L215	27 434.820	2 914	931.750	R217	29 924.820	2 915	214.380
L216	27 420.540	2 914	928.160	R218	29 328.190	2 915	157.300
L217	27 338.970	2 914	925.450	R219	28 961.620	2 915	122.230
L218	27 298.800	2 914	922.710	R220	28 531.230	2 915	081.060
L219	26 907.840	2 914	885.060	R221	28 135.100	2 915	042.900
L220	26 807.190	2 914	872.520	R222	27 535.910	2 914	985.480
L221	26 649.750	2 914	844.920	R223	27 453.190	2 914	977.380
L222	26 552.910	2 914	818.970	R224	27 432.200	2 914	978.690
L223	26 367.080	2 914	752.150	R225	27 414.430	2 914	979.790
L224	26 287.740	2 914	716.180	R226	27 375.500	2 914	973.250
L225	26 008.870	2 914	577.220	R227	27 297.380	2 914	962.660
L226	25 697.390	2 914	421.920	R228	26 885.240	2 914	923.110
L227	25 461.090	2 914	304.100	R229	26 829.530	2 914	915.910
L228	25 198.180	2 914	173.010	R230	26 715.790	2 914	900.440
L229	24 935.550	2 914	042.060	R231	26 662.910	2 914	888.560
L230	24 789.420	2 913	969.170	R232	26 638.230	2 914	883.020
L231	24 488.040	2 913	818.860	R233	26 541.790	2 914	857.290
L232	24 261.070	2 913	705.790	R234	26 353.480	2 914	789.500
L233	23 950.460	2 913	551.060	R235	25 992.560	2 914	614.090
L234	23 456.770	2 913	304.880	R236	25 672.170	2 914	454.100
L235	23 449.130	2 913	301.340	R237	25 490.110	2 914	363.190
L236	23 356.660	2 913	258.470	R238	25 176.660	2 914	206.900
L237	23 263.310	2 913	221.180	R239	24 918.990	2 914	078.410
L238	23 148.900	2 913	182.220	R240	24 661.960	2 913	950.260
L239	23 032.130	2 913	150.240	R241	24 472.410	2 913	855.750
L240	22 877.920	2 913	119.220	R242	24 246.710	2 913	743.350
L241	22 212.100	2 913	012.070	R243	23 933.310	2 913	587.270
L242	22 141.840	2 913	000.740	R244	23 390.390	2 913	319.410
L243	21 985.370	2 912	975.510	R245	23 343.420	2 913	296.240
L244	21 789.240	2 912	943.330	R246	23 253.190	2 913	259.940
L245	21 650.820	2 912	926.470	R247	23 138.410	2 913	220.830
L246	21 643.700	2 912	925.610	R248	23 023.760	2 913	189.340
L247	21 570.450	2 912	920.820	R249	22 824.810	2 913	151.050
L248	21 484.610	2 912	915.210	R250	22 199.890	2 913	050.570
L249	21 131.080	2 912	930.580	R251	22 093.670	2 913	033.460
L250	20 965.370	2 912	955.710	R252	21 979.060	2 913	015.000
L251	20 801.810	2 912	992.210	R253	21 791.700	2 912	990.410
L252	20 679.070	2 913	027.080	R254	21 627.720	2 912	979.370
L253	20 641.470	2 913	039.810	R255	21 557.400	2 912	978.900

Vel 14 Van 15
Sheet of

P648/08

PADRESERWE KOÖRDINATE / ROAD RESERVE CO-ORDINATES

LINKERKANT/LEFT HAND SIDE				REGTERKANT/RIGHT HAND SIDE			
	Y	X	WG 27°		Y	X	
L254	20 483.780	2 913 098.730		R256	21 464.030	2 912 978.350	
L255	20 331.100	2 913 167.970		R257	21 301.680	2 912 985.240	
L256	20 186.750	2 913 245.020		R258	21 138.360	2 912 996.220	
L257	20 104.526	2 913 298.937		R259	20 976.690	2 913 018.260	
				R260	20 817.470	2 913 053.770	
				R261	20 660.950	2 913 100.360	
				R262	20 508.050	2 913 157.390	
				R263	20 359.360	2 913 224.920	
				R264	20 237.830	2 913 289.880	
				R265	20 138.631	2 219 352.749	

Vel	15	Van	15	P648/08
Sheet		of		