

Government Gazette Staatskoerant

REPUBLIC OF SOUTH AFRICA
REPUBLIEK VAN SUID-AFRIKA

Vol. 544

Pretoria, 25 October
Oktober 2010

No. 33647

IMPORTANT NOTICE

The Government Printing Works will not be held responsible for faxed documents not received due to errors on the fax machine or faxes received which are unclear or incomplete. Please be advised that an "OK" slip, received from a fax machine, will not be accepted as proof that documents were received by the GPW for printing. If documents are faxed to the GPW it will be the sender's responsibility to phone and confirm that the documents were received in good order.

Furthermore the Government Printing Works will also not be held responsible for cancellations and amendments which have not been done on original documents received from clients.

CONTENTS**INHOUD**

<i>No.</i>	<i>Page No.</i>	<i>Gazette No.</i>	<i>No.</i>	<i>Bladsy No.</i>	<i>Koerant No.</i>
GOVERNMENT NOTICE			GOEWERMENSKENNISGEWING		
Transport, Department of			Vervoer, Departement van		
<i>Government Notice</i>			<i>Goewermentskennisgewing</i>		
921			921		
South African National Roads Agency Limited and the National Roads Act (7/1998): The South African National Roads Agency Limited: Declaration amendment of National Road N7 Section 5: Amendment of Declaration No. 218 of 2006	3	33647	Suid-Afrikaanse Nasionale Padagentskap Beperk en die Nasionale Paaie Wet (7/1998): Die Suid-Afrikaanse Nasionale Padagentskap Beperk: Verklaring wysiging van Nasionale Pad N7 Seksie 5: Wysiging van Verklaring No. 218 van 2006	4	33647

GOVERNMENT NOTICE

DEPARTMENT OF TRANSPORT

No. 921

25 October 2010

THE SOUTH AFRICAN NATIONAL ROADS AGENCY LIMITED

Registration No: 98/09584/06

DECLARATION AMENDMENT OF NATIONAL ROAD N7 SECTION 5

AMENDMENT OF DECLARATION NO. 218 OF 2006.

By virtue of section 40(1)(b) of the South African National Roads Agency Limited and the National Roads Act, 1998 (Act No. 7 of 1998), I hereby amend Declaration No. 218 of 2006 by substituting the section of the descriptive declaration from Vanrhynsdorp up to Bitterfontein, with the subjoined sheets 1 to 20 of Plan No. P754/09.

(National Road N7 Section 5: Vanrhynsdorp – Bitterfontein)


MINISTER OF TRANSPORT

(Acting Minister)
30/09/2010

GOEWERMENTSKENNISGEWING

DEPARTEMENT VAN VERVOER

No. 921

25 Oktober 2010

DIE SUID-AFRIKAANSE NASIONALE PADAGENTSKAP BEPERK


Registrasie No: 98/09584/06

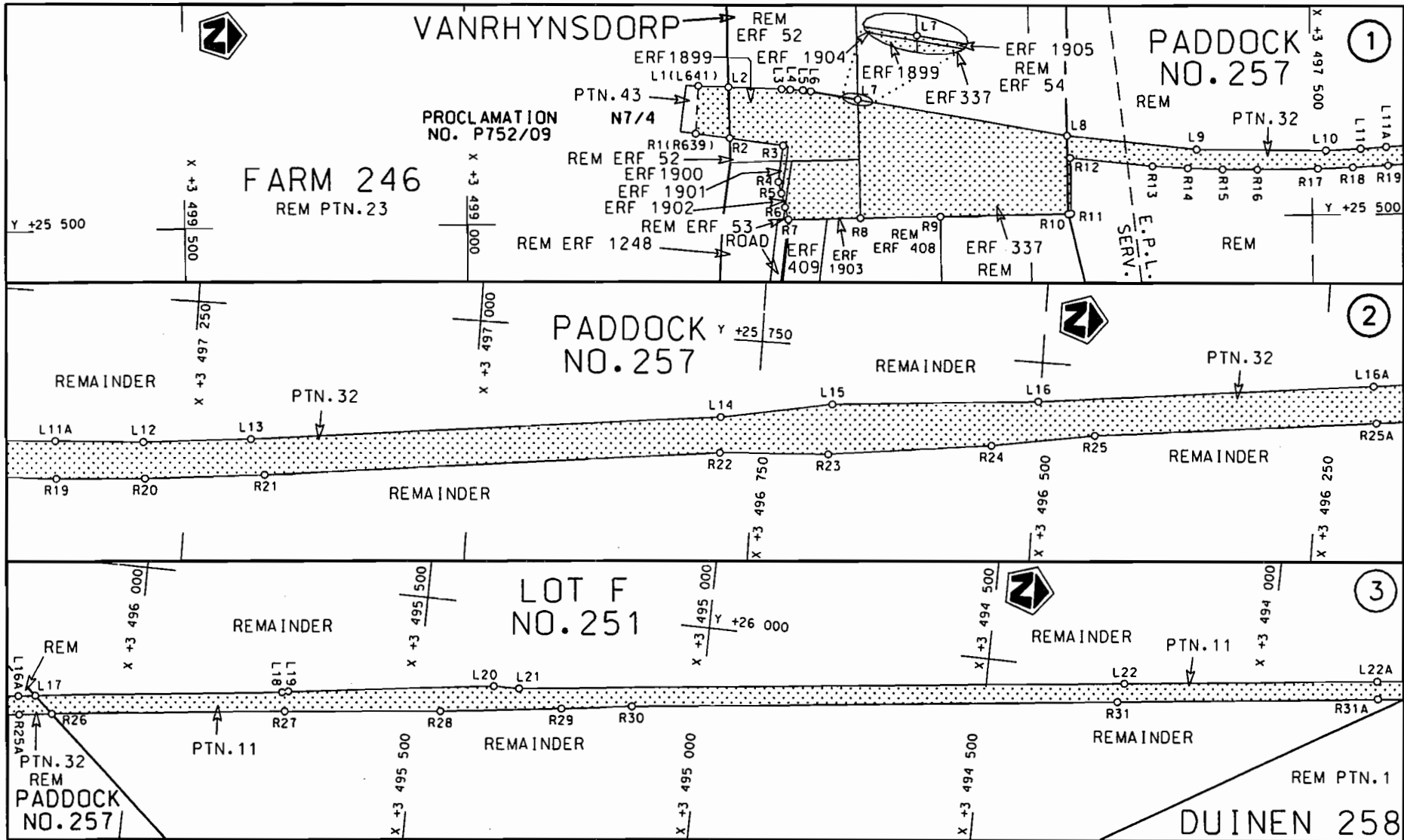
VERKLARING WYSIGING VAN NASIONALE PAD N7 SEKSIE 5.

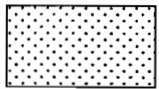
WYSIGING VAN VERKLARING NO. 218 VAN 2006

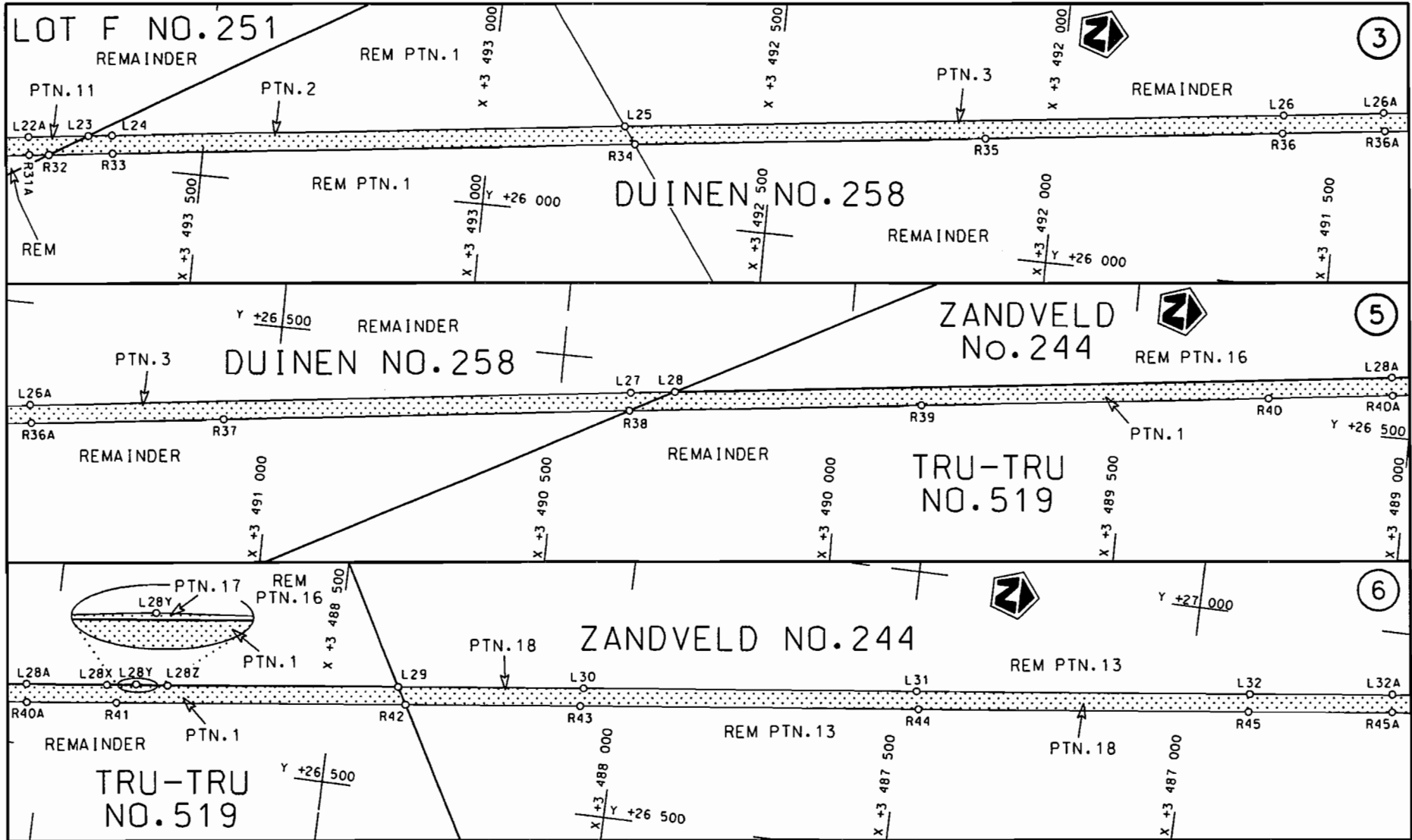
Kragtens Artikel 40(1)(b) van die Suid-Afrikaanse Nasionale Padagentskap Beperk en die Nasionale Paaie Wet, 1998 (Wet no. 7 van 1998), wysig ek hiermee Verklaring no. 218 van 2006 deur die gedeelte van die beskrywende verklaring vanaf Vanrhynsdorp tot by Bitterfontein, te vervang met meegaande velle 1 tot 20 van Plan no. P754/09.

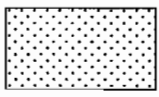
(Nasionale Pad N7 Seksie 5: Vanrhynsdorp – Bitterfontein)

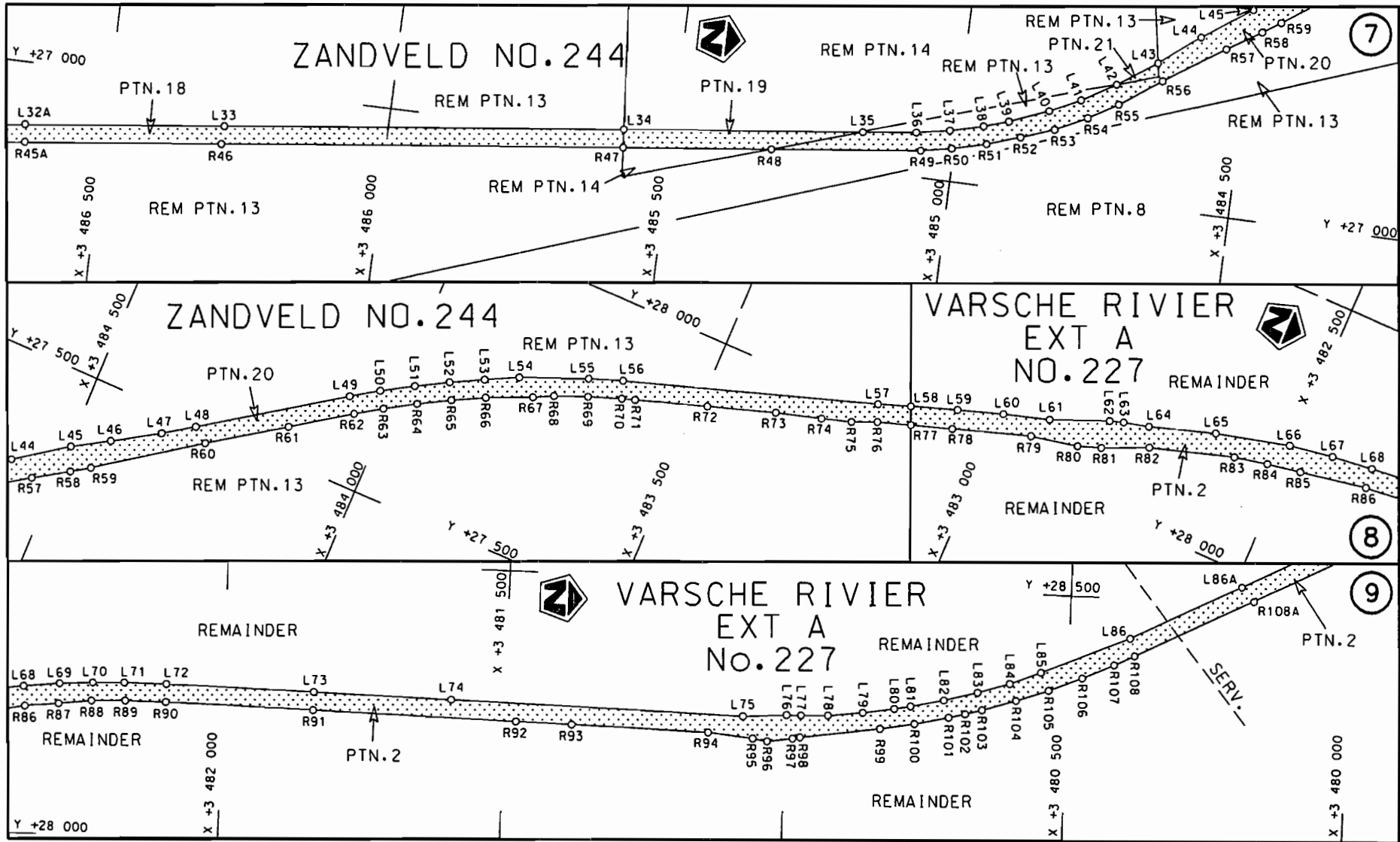

MINISTER VAN VERVOER (Acting Minister)
30/09/2010




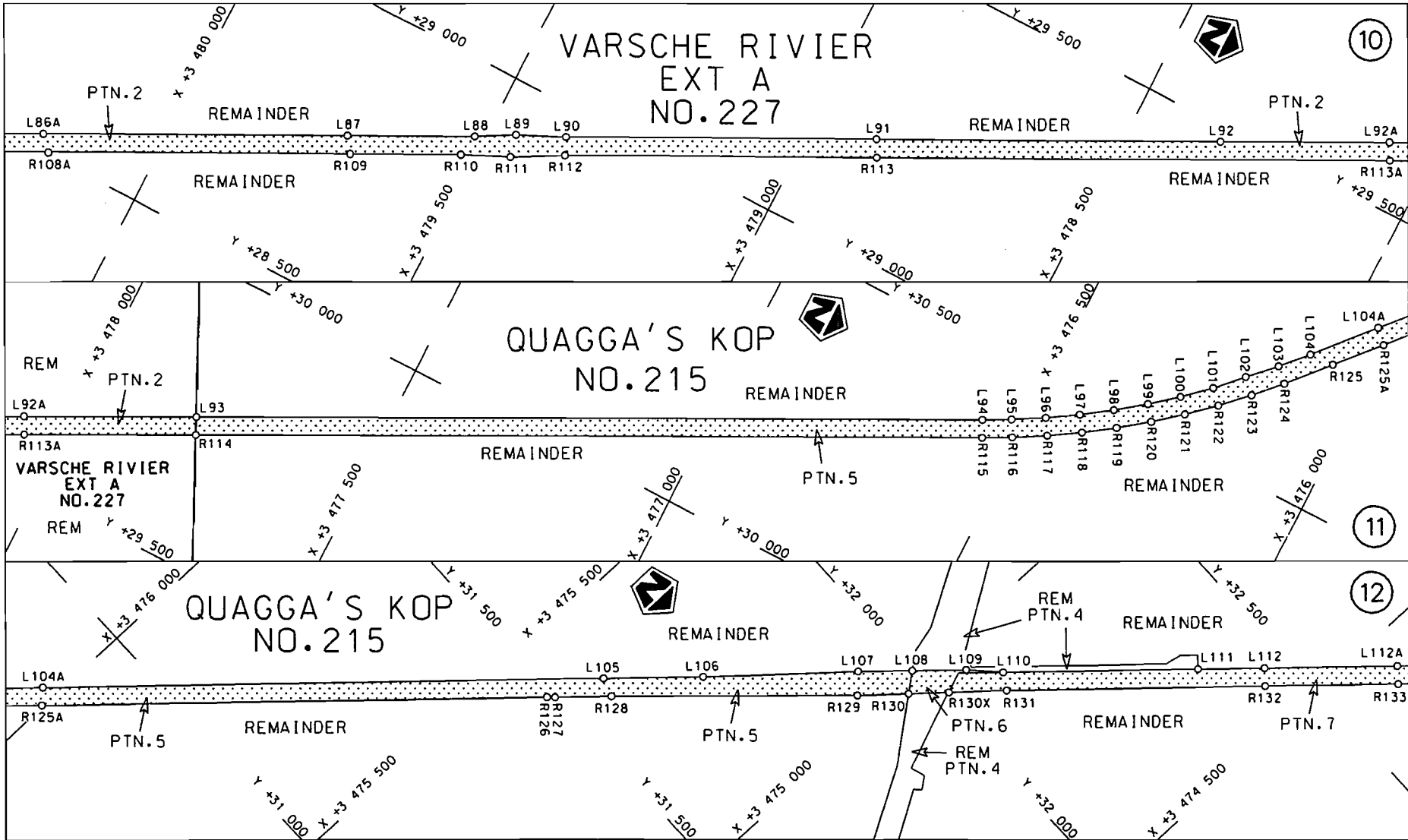
Die Suid Afrikaanse Nasionale Padagentskap Beperk	Die figuur getoon		Vel Sheet 1 van 20
The South African National Roads Agency Limited	The figure shown	steldie padreserwe voor van 'n gedeelte represents the road reserve of a portion van Nasionale Roete N7 Seksie Section of National Route 5	Plan P754/09

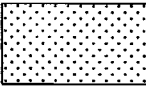


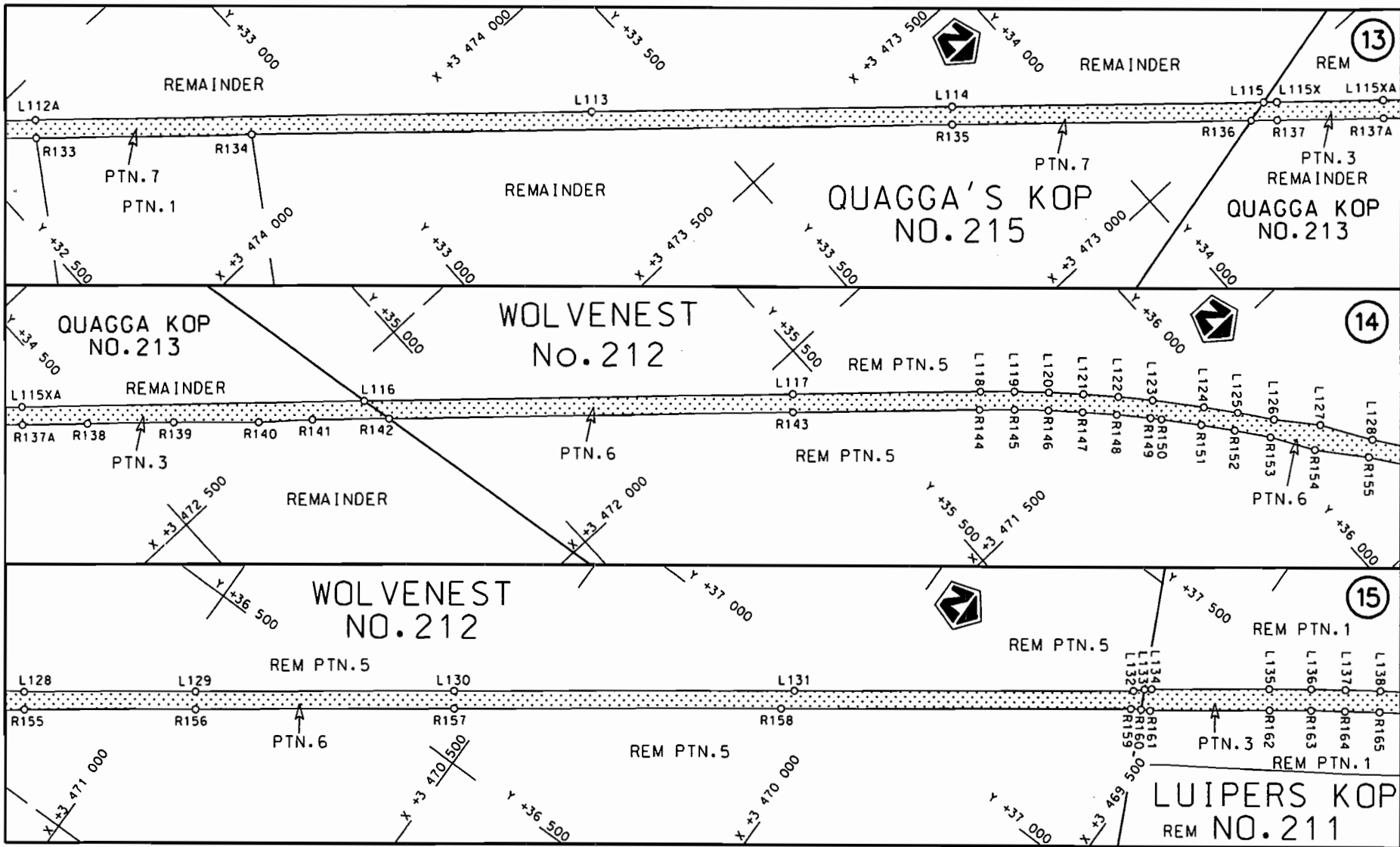
<p>Die Suid Afrikaanse Nasionale Padagentskap Beperk The South African National Roads Agency Limited</p>	<p>Die figuur getoon The figure shown</p>		<p>stel die padreserwe voor van 'n gedeelte represents the road reserve of a portion van Nasionale Roete N7 of Notional Route</p>	<p>Seksie Section</p> <p>5</p>	<p>Vel Sheet</p> <p>2 van of 20</p> <p>Plan P754/09</p>
--	---	--	---	------------------------------------	---




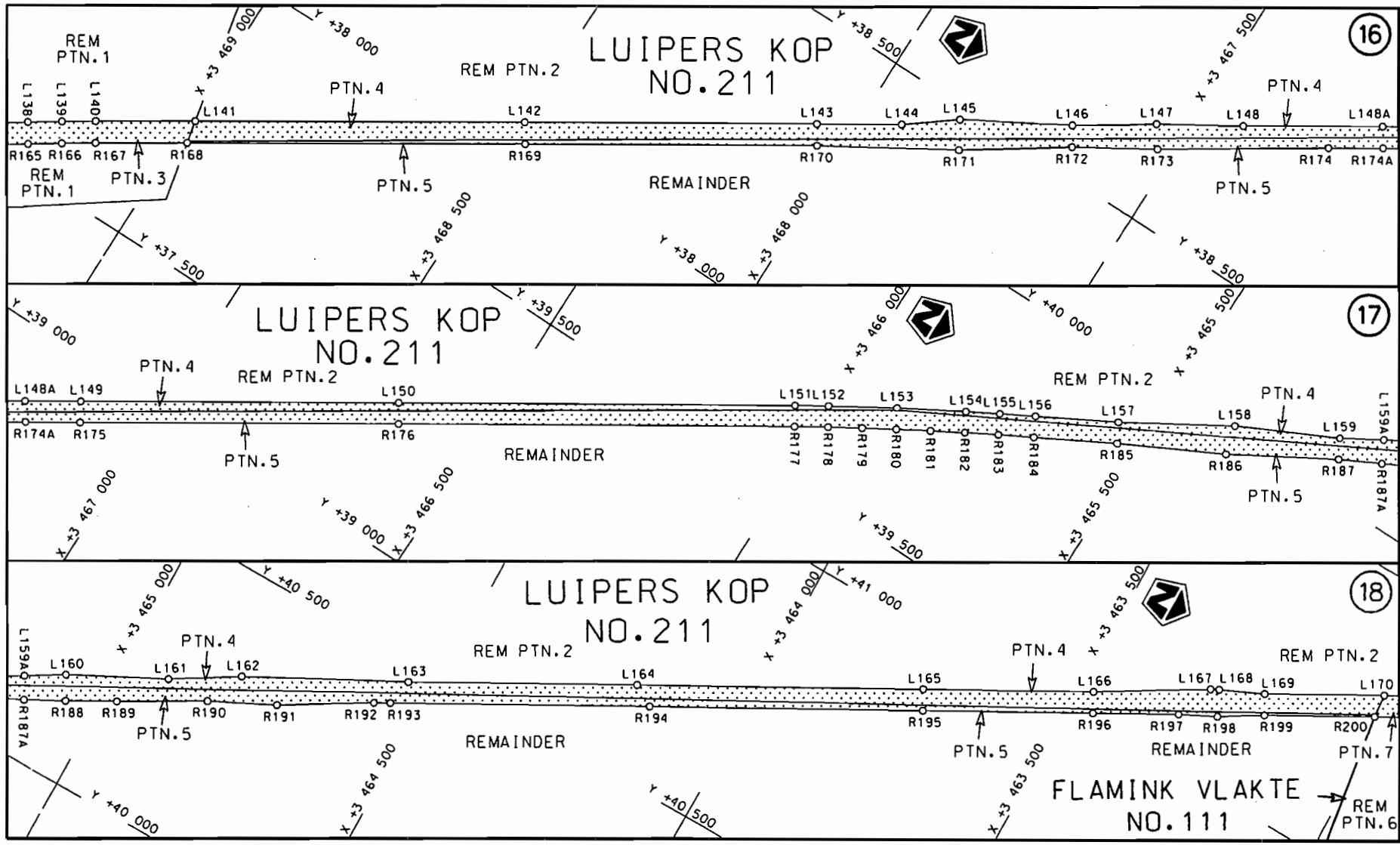
Die Suid Afrikaanse Nasionale Padogenskop Beperk The South African National Roads Agency Limited	Die figuur getoon The figure shown		steldie padreserve voor van 'n gedeelte represents the road reserve of a portion van Nasionale Roete N7 of Notional Route N7 Seksie Section 5	Vel Sheet 3 van of 20 Plan P754/09
---	---------------------------------------	--	---	---------------------------------------



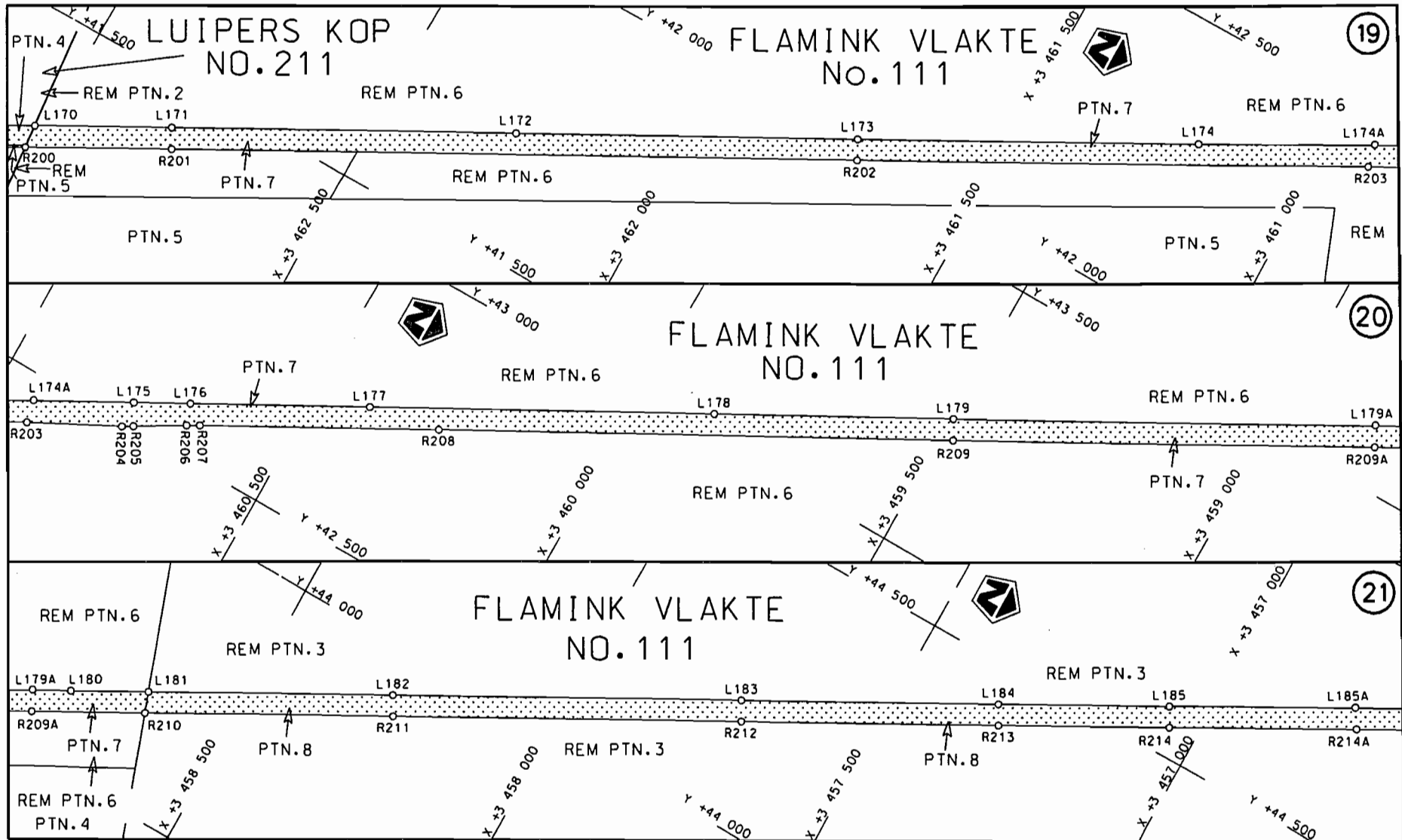
<p>Die Suid Afrikaanse Nasionale Padagentskap Beperk The South African National Roads Agency Limited</p>	<p>Die figuur getoon The figure shown</p>		<p>steldie padreserwe voor van 'n gedeelte represents the road reserve of a portion van Nasionale Roete N7 Seksie of National Route Section 5</p>	<p>Vel Sheet 4 van of 20 Plan P754/09</p>
--	---	--	---	---

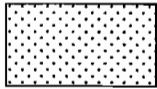


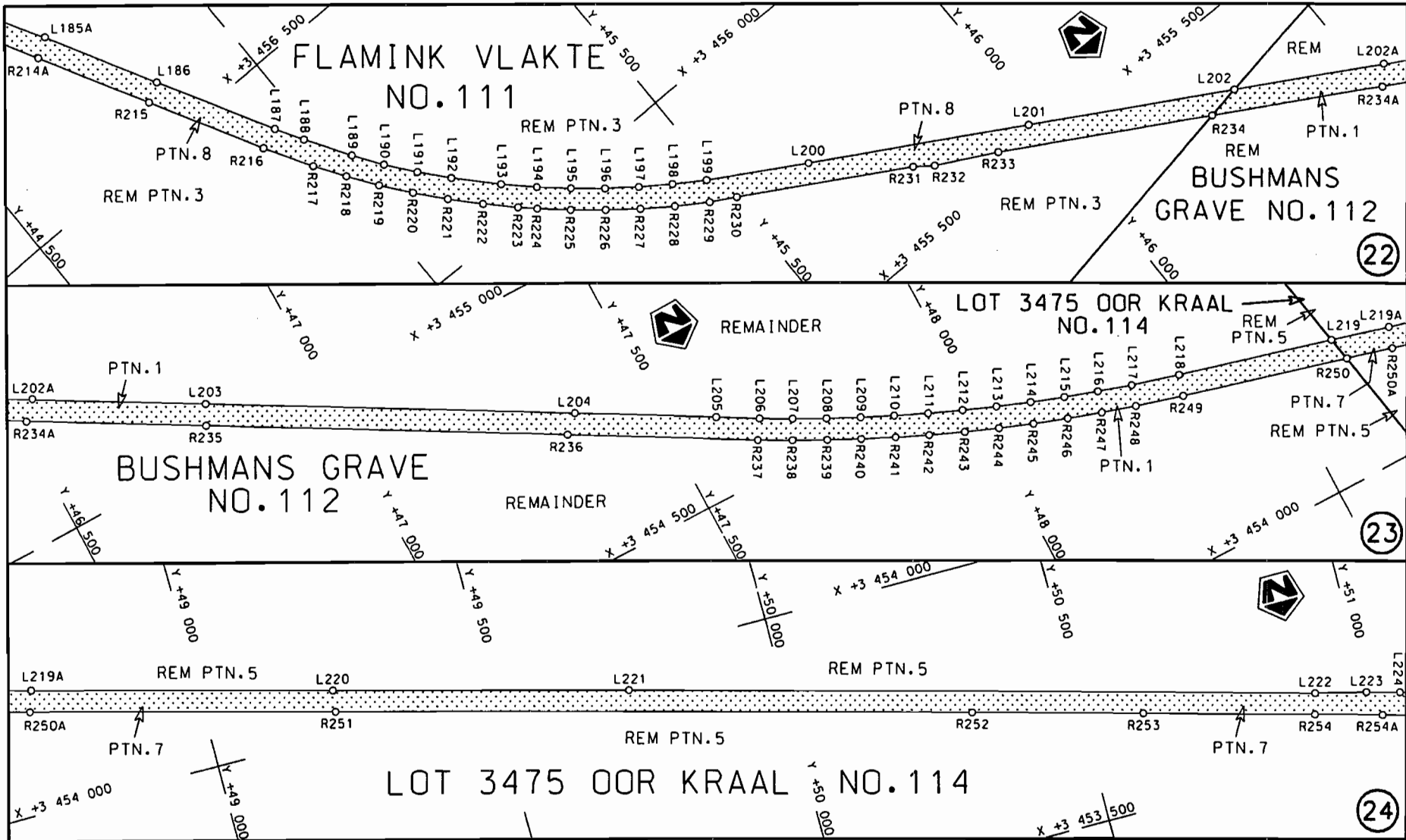
Die Suid Afrikaanse Nasionale Padagentskap Beperk The South African National Roads Agency Limited	Die figuur getoon The figure shown		steldie padreserwe voor van 'n gedeelte represents the road reserve of a portion van Nasionale Roete N7 Seksie Section of National Route 5	Vel Sheet 5 van of 20
				Plan P754/09

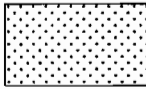


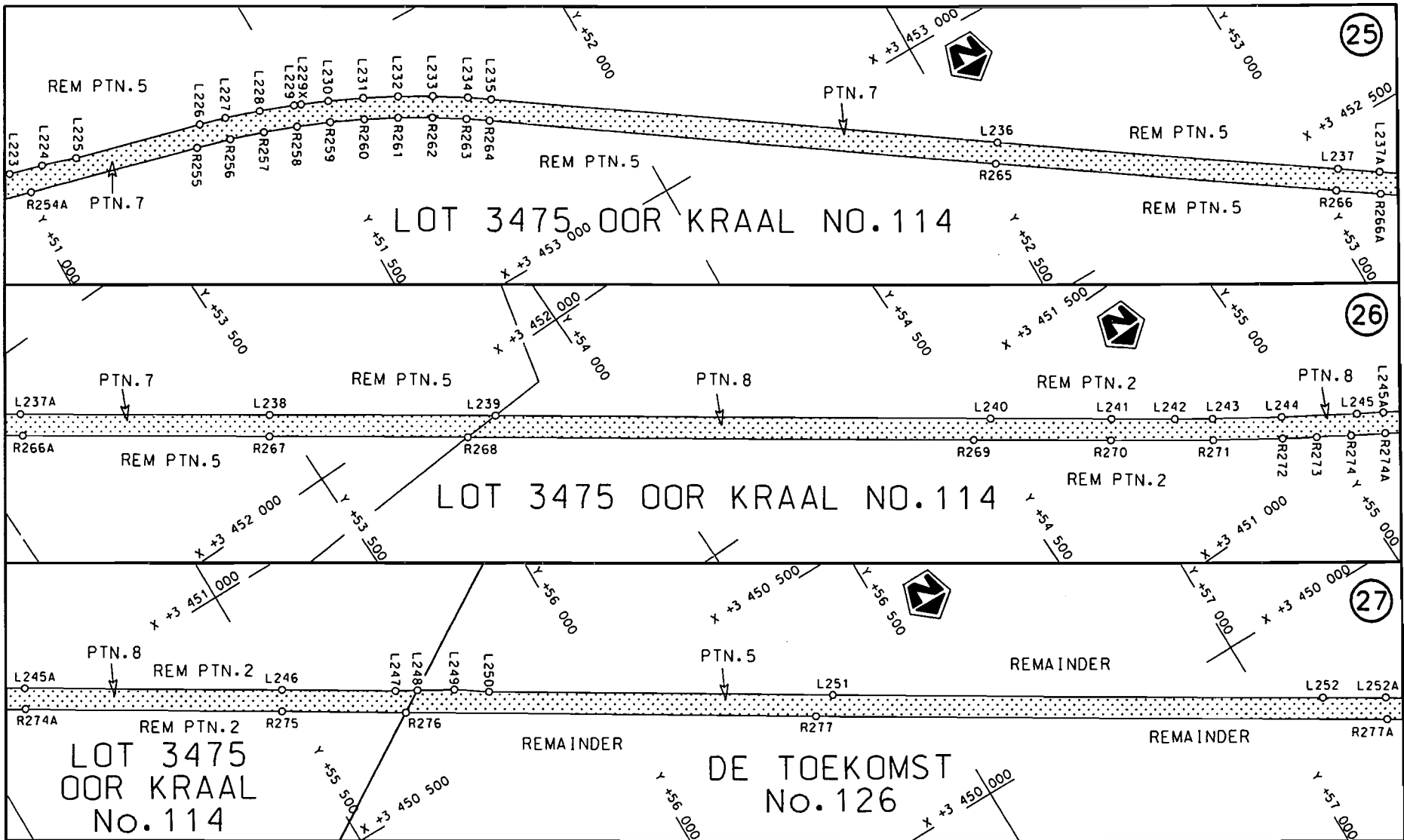
<p>Die Suid Afrikaanse Nasionale Padagentskap Beperk</p>	<p>Die figuur getoon</p>	<p>steldie padreserve voor van 'n gedeelte</p>	<p>Vel Sheet 6 van of 20</p>
<p>The South African National Roads Agency Limited</p>	<p>The figure shown</p>	<p>represents the road reserve of a portion of Nasionale Roete N7</p>	<p>Plan P754/09</p>
		<p>of National Route N7</p>	<p>Seksie Section 5</p>



Die Suid Afrikaanse Nasionale Padagentskap Beperk The South African National Roads Agency Limited	Die figuur getoon The figure shown 	stel die padreserwe voor van 'n gedeelte represents the road reserve of a portion van Nasionale Roete N7 of National Route N7 Seksie 5 Section	Vel 7 van 20 Sheet of Plan P754/09
--	--	---	--

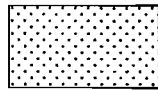


<p>Die Suid Afrikaanse Nasionale Padagentskap Beperk The South African National Roads Agency Limited</p>	<p>Die figuur getoon The figure shown</p>	<p></p> <p>steldie padreserwe voor van 'n gedeelte represents the road reserve of a portion van Nasionale Roete N7 Seksie of National Route N7 Section</p>	<p>Vel Sheet 8 van 20 Plan P754/09</p>
			<p>5</p>



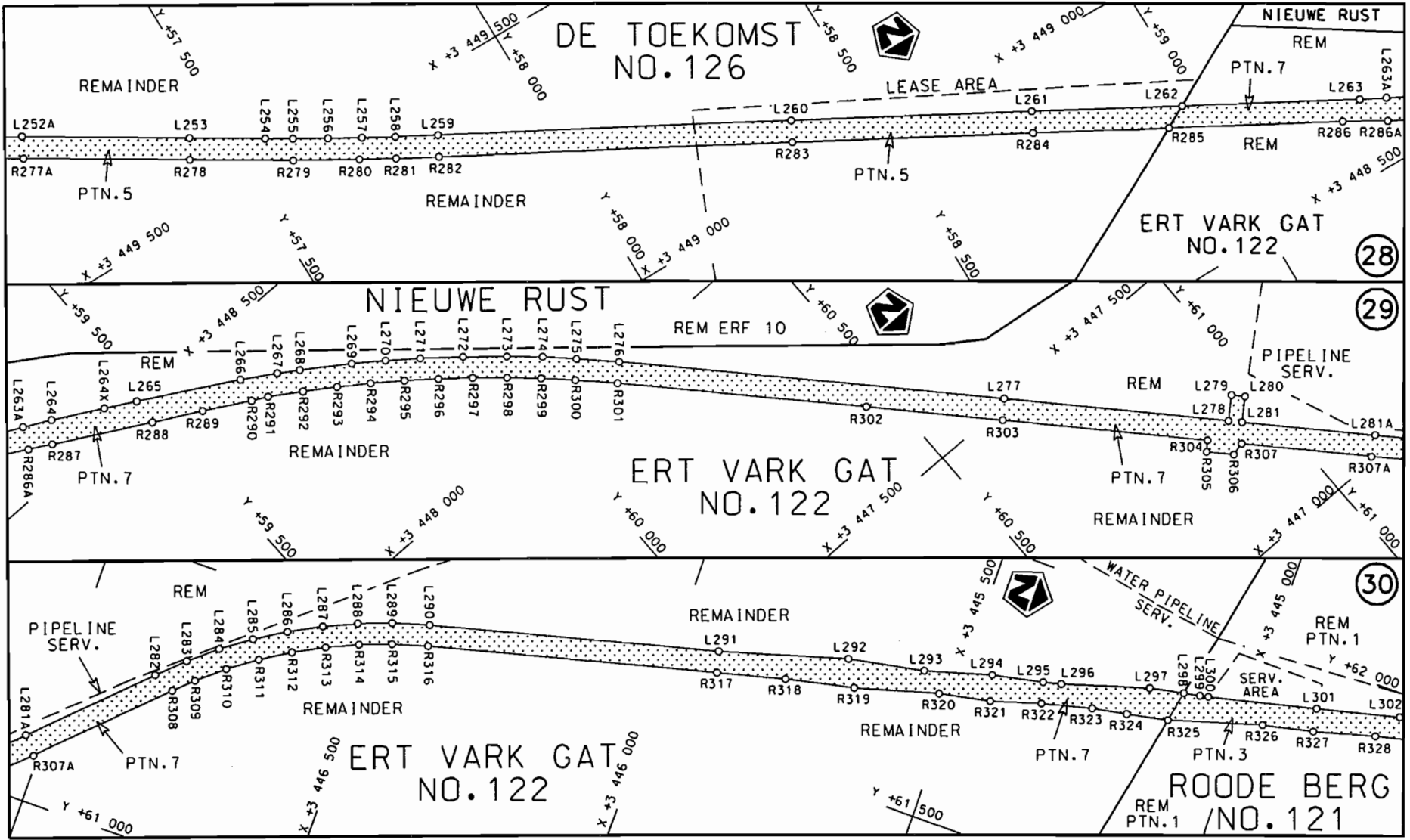
Die Suid Afrikaanse Nasionale Padagentskap Beperk
The South African National Roads Agency Limited

Die figuur getoon
The figure shown

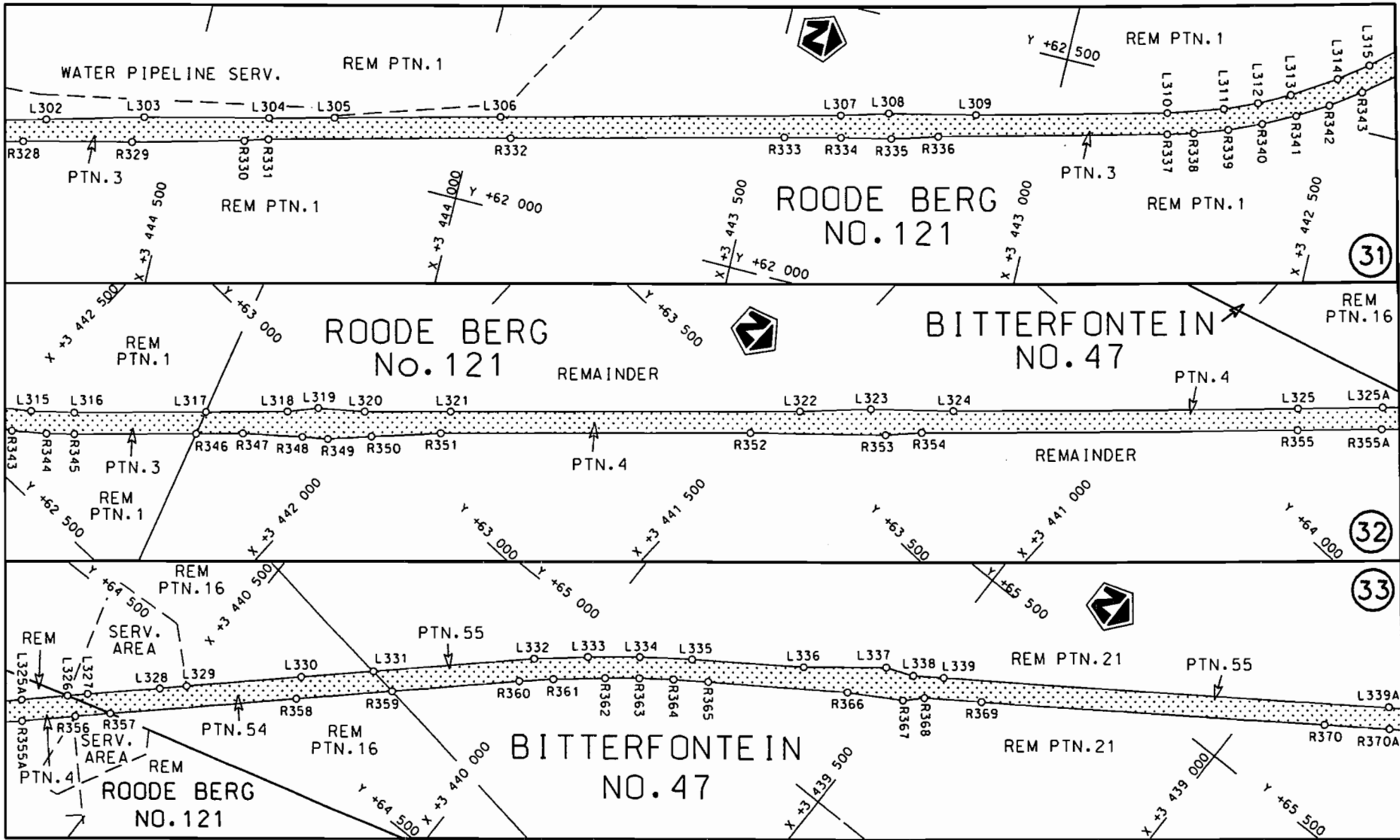



steldie padreserwe voor van 'n gedeelte
represents the road reserve of a portion
van Nasionale Roete N7 Seksie
of National Route N7 Section

Vel Sheet 9 van 20
Plan P754/09

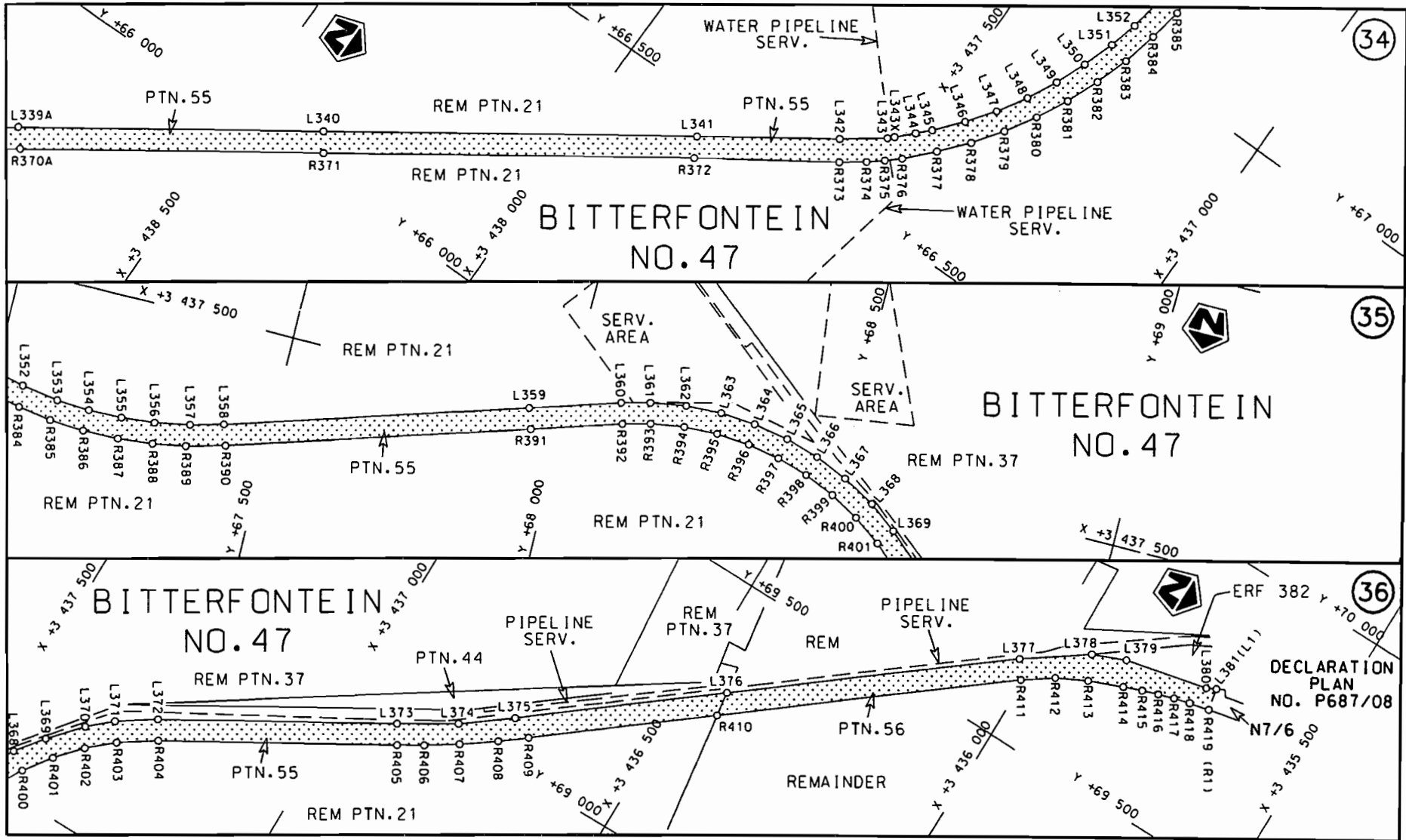


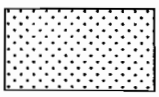
<p>Die Suid Afrikaanse Nasionale Padagentskop Beperk The South African National Roads Agency Limited</p>	<p>Die figuur getoon The figure shown</p>		<p>steldie padreserwe voor van 'n gedeelte represents the road reserve of a portion van Nasionale Roete N7 of National Route N7</p>	<p>Vel Sheet 10 van of 20 Plan P754/09</p>
			<p>Seksie Section 5</p>	



Die Suid Afrikaanse Nasionale Padagentskap Beperk The South African National Roads Agency Limited	Die figuur getoon The figure shown		Vel Sheet 11 van 20 Plan P754/09
stiel die padreserwe voor van 'n gedeelte represents the road reserve of a portion van Nasionale Roete of National Route N7 Seksie Section 5			5

STAATSKOERANT, 25 OKTOBER 2010
 No. 33647 15



<p>Die Suid Afrikaanse Nasionale Padagentskap Beperk The South African National Roads Agency Limited</p>	<p>Die figuur getoon The figure shown</p>	 <p>steldie padreserwe voor van 'n gedeelte represents the road reserve of a portion van Nasionale Roete N7 Seksie of National Route Section</p>	<p>Vel Sheet 12 van of 20</p>
<p>5</p>			<p>Plan P754/09</p>

PADRESERWE KOÖRDINATE / ROAD RESERVE CO-ORDINATES									
LINKERKANT/LEFT HAND SIDE					REGTERKANT/RIGHT HAND SIDE				
	Y	X	WG 19°		Y	X			
L1	25 738.890	3 498 588.050		R1	25 655.650	3 498 594.130			
L2	25 736.150	3 498 534.750		R2	25 647.000	3 498 533.950			
L3	25 731.190	3 498 434.500		R3	25 633.470	3 498 438.670			
L4	25 730.840	3 498 425.900		R4	25 568.710	3 498 447.760			
L5	25 728.230	3 498 395.400		R5	25 548.530	3 498 442.710			
L6	25 726.950	3 498 388.340		R6	25 523.900	3 498 436.540			
L7	25 711.880	3 498 305.130		R7	25 502.210	3 498 431.100			
L8	25 644.020	3 497 930.370		R8	25 503.310	3 498 303.340			
L9	25 618.100	3 497 704.600		R9	25 504.535	3 498 161.139			
L10	25 613.630	3 497 474.390		R10	25 506.530	3 497 929.640			
L11	25 615.950	3 497 413.040		R11	25 507.060	3 497 928.280			
L12	25 623.100	3 497 290.450		R12	25 606.040	3 497 928.850			
L13	25 632.160	3 497 194.880		R13	25 589.220	3 497 783.530			
L14	25 681.040	3 496 782.350		R14	25 584.910	3 497 720.680			
L15	25 699.620	3 496 684.070		R15	25 582.070	3 497 658.960			
L16	25 715.560	3 496 501.450		R16	25 580.840	3 497 597.070			
L17	25 754.170	3 496 174.940		R17	25 581.280	3 497 489.110			
L18	25 806.420	3 495 733.050		R18	25 582.910	3 497 427.130			
L19	25 807.600	3 495 732.760		R19	25 585.600	3 497 365.350			
L20	25 856.810	3 495 367.970		R20	25 591.270	3 497 286.940			
L21	25 857.250	3 495 322.720		R21	25 601.870	3 497 180.620			
L22	25 982.900	3 494 255.640		R22	25 649.740	3 496 780.960			
L23	26 048.180	3 493 703.610		R23	25 655.490	3 496 684.710			
L24	26 053.160	3 493 661.540		R24	25 673.670	3 496 540.500			
L25	26 160.300	3 492 763.340		R25	25 689.030	3 496 449.140			
L26	26 298.260	3 491 606.540		R26	25 725.190	3 496 142.080			
L27	26 444.990	3 490 377.220		R27	25 773.690	3 495 730.160			
L28	26 454.200	3 490 299.690		R28	25 803.000	3 495 457.630			
L28X	26 621.280	3 488 898.020		R29	25 830.350	3 495 244.580			
L28Y	26 628.920	3 488 846.870		R30	25 847.540	3 495 122.170			
L28Z	26 633.900	3 488 792.210		R31	25 949.680	3 494 264.710			
L29	26 682.260	3 488 386.450		R32	26 008.680	3 493 769.860			
L30	26 720.980	3 488 062.960		R33	26 022.110	3 493 657.180			
L31	26 790.380	3 487 479.750		R34	26 131.060	3 492 742.600			
L32	26 860.230	3 486 894.380		R35	26 204.480	3 492 127.740			
L33	26 932.010	3 486 290.630		R36	26 266.770	3 491 605.500			
L34	27 016.180	3 485 586.520		R37	26 328.420	3 491 087.480			
L35	27 066.820	3 485 164.100		R38	26 413.340	3 490 376.510			
L36	27 078.190	3 485 069.380		R39	26 474.440	3 489 863.950			
L37	27 089.260	3 485 010.580		R40	26 547.010	3 489 254.380			
L38	27 104.310	3 484 952.540		R41	26 592.040	3 488 877.310			
L39	27 118.390	3 484 908.760		R42	26 652.660	3 488 370.010			
L40	27 145.940	3 484 840.080		R43	26 689.110	3 488 064.960			
L41	27 172.240	3 484 786.260		R44	26 759.520	3 487 472.920			
L42	27 207.150	3 484 726.470		R45	26 828.650	3 486 893.070			
L43	27 253.830	3 484 657.420		R46	26 900.370	3 486 291.910			
L44	27 308.950	3 484 586.490		R47	26 984.580	3 485 583.780			
L45	27 372.370	3 484 496.840		R48	27 015.870	3 485 323.020			
L46	27 409.420	3 484 434.460		R49	27 047.710	3 485 057.690			
L47	27 457.560	3 484 356.820		R50	27 058.610	3 485 003.540			
L48	27 491.870	3 484 305.940		R51	27 074.180	3 484 943.510			

Vel 13
Sheet

Van 20
of

P754/08

PADRESERWE KOÖRDINATE / ROAD RESERVE CO-ORDINATES							
LINKERKANT/LEFT HAND SIDE				REGTERKANT/RIGHT HAND SIDE			
	Y	X	WG 19°		Y	X	
L49	27 650.250	3 484 074.170		R52	27 093.740	3 484 884.770	
L50	27 680.440	3 484 028.160		R53	27 114.740	3 484 826.290	
L51	27 712.400	3 483 975.430		R54	27 142.170	3 484 770.530	
L52	27 742.850	3 483 922.050		R55	27 173.140	3 484 718.590	
L53	27 771.380	3 483 867.650		R56	27 223.690	3 484 645.160	
L54	27 799.290	3 483 813.120		R57	27 293.620	3 484 539.760	
L55	27 846.430	3 483 698.980		R58	27 331.530	3 484 480.370	
L56	27 867.450	3 483 641.350		R59	27 352.230	3 484 448.650	
L57	28 011.580	3 483 208.780		R60	27 472.220	3 484 279.180	
L58	28 031.560	3 483 153.440		R61	27 557.340	3 484 153.990	
L59	28 058.660	3 483 075.320		R62	27 624.820	3 484 054.890	
L60	28 084.540	3 482 997.770		R63	27 653.710	3 484 010.900	
L61	28 108.360	3 482 918.340		R64	27 685.320	3 483 959.500	
L62	28 149.080	3 482 819.090		R65	27 715.300	3 483 906.930	
L63	28 156.760	3 482 795.100		R66	27 743.310	3 483 853.460	
L64	28 168.000	3 482 750.410		R67	27 777.060	3 483 777.290	
L65	28 205.040	3 482 636.450		R68	27 794.330	3 483 743.720	
L66	28 237.630	3 482 507.800		R69	27 816.950	3 483 687.630	
L67	28 250.130	3 482 429.440		R70	27 837.660	3 483 630.930	
L68	28 258.940	3 482 356.790		R71	27 845.280	3 483 608.530	
L69	28 266.170	3 482 291.840		R72	27 885.880	3 483 486.920	
L70	28 270.720	3 482 231.750		R73	27 924.450	3 483 371.150	
L71	28 273.060	3 482 175.480		R74	27 947.480	3 483 292.370	
L72	28 273.670	3 482 101.190		R75	27 963.840	3 483 240.530	
L73	28 270.380	3 481 836.960		R76	27 982.150	3 483 197.700	
L74	28 267.520	3 481 594.000		R77	28 001.150	3 483 140.510	
L75	28 261.340	3 481 076.560		R78	28 024.380	3 483 070.610	
L76	28 266.900	3 480 999.120		R79	28 068.850	3 482 937.430	
L77	28 267.260	3 480 973.530		R80	28 085.630	3 482 854.690	
L78	28 269.400	3 480 925.040		R81	28 099.710	3 482 814.420	
L79	28 277.320	3 480 862.250		R82	28 134.720	3 482 735.350	
L80	28 286.550	3 480 806.380		R83	28 179.770	3 482 590.100	
L81	28 292.180	3 480 777.420		R84	28 192.230	3 482 531.480	
L82	28 305.380	3 480 718.750		R85	28 202.400	3 482 471.940	
L83	28 321.520	3 480 659.620		R86	28 224.180	3 482 353.310	
L84	28 339.440	3 480 603.230		R87	28 230.880	3 482 292.650	
L85	28 362.140	3 480 548.280		R88	28 239.020	3 482 232.990	
L86	28 429.420	3 480 391.470		R89	28 241.550	3 482 172.580	
L87	28 773.250	3 479 718.770		R90	28 242.070	3 482 101.110	
L88	28 876.110	3 479 517.350		R91	28 238.820	3 481 837.000	
L89	28 912.130	3 479 454.330		R92	28 234.470	3 481 479.050	
L90	28 949.010	3 479 374.940		R93	28 233.350	3 481 379.620	
L91	29 198.400	3 478 887.480		R94	28 230.380	3 481 137.090	
L92	29 475.880	3 478 344.840		R95	28 223.750	3 481 057.620	
L93	29 750.680	3 477 807.600		R96	28 220.010	3 481 032.130	
L94	30 381.520	3 476 573.150		R97	28 226.520	3 480 986.960	
L95	30 405.960	3 476 527.420		R98	28 229.330	3 480 973.900	
L96	30 436.320	3 476 475.200		R99	28 250.380	3 480 830.410	
L97	30 468.710	3 476 424.400		R100	28 261.810	3 480 769.170	
L98	30 503.070	3 476 374.920		R101	28 275.510	3 480 709.030	
L99	30 539.650	3 476 326.600		R102	28 283.000	3 480 680.190	

Vel	14	Van	20	P754/08
Sheet		of		

PADRESERWE KOÖRDINATE / ROAD RESERVE CO-ORDINATES					
LINKERKANT/LEFT HAND SIDE			REGTERKANT/RIGHT HAND SIDE		
	Y	X	WG 19°	Y	X
L100	30 577.620	3 476 280.200	R103	28 291.220	3 480 650.840
L101	30 618.170	3 476 235.170	R104	28 310.400	3 480 590.730
L102	30 661.430	3 476 192.800	R105	28 330.950	3 480 533.600
L103	30 704.550	3 476 149.700	R106	28 355.510	3 480 474.420
L104	30 748.400	3 476 109.520	R107	28 381.090	3 480 418.440
L105	31 584.340	3 475 368.430	R108	28 398.600	3 480 382.400
L106	31 716.250	3 475 251.460	R109	28 747.410	3 479 699.990
L107	31 924.460	3 475 073.980	R110	28 837.240	3 479 524.520
L108	31 996.290	3 475 010.400	R111	28 873.530	3 479 445.820
L109	32 067.980	3 474 946.930	R112	28 920.340	3 479 362.030
L110	32 113.350	3 474 899.920	R113	29 170.640	3 478 872.620
L111	32 371.180	3 474 671.310	R114	29 722.240	3 477 793.920
L112	32 459.250	3 474 592.800	R115	30 353.430	3 476 558.950
L113	33 371.650	3 473 783.760	R116	30 378.520	3 476 512.020
L114	33 850.870	3 473 359.170	R117	30 409.590	3 476 458.720
L115	34 266.430	3 472 990.650	R118	30 442.470	3 476 406.870
L115X	34 284.030	3 472 975.040	R119	30 477.610	3 476 356.430
L116	34 880.730	3 472 446.270	R120	30 514.860	3 476 307.230
L117	35 447.350	3 471 943.630	R121	30 554.060	3 476 259.380
L118	35 697.750	3 471 721.610	R122	30 595.040	3 476 213.440
L119	35 743.320	3 471 680.060	R123	30 637.760	3 476 169.120
L120	35 787.670	3 471 637.550	R124	30 681.910	3 476 126.980
L121	35 830.880	3 471 594.020	R125	30 750.580	3 476 065.670
L122	35 873.090	3 471 549.330	R126	31 489.520	3 475 410.610
L123	35 914.150	3 471 503.690	R127	31 496.930	3 475 403.990
L124	35 973.420	3 471 433.240	R128	31 573.280	3 475 336.250
L125	36 011.430	3 471 385.260	R129	31 895.030	3 475 044.070
L126	36 050.860	3 471 332.680	R130	31 964.160	3 474 985.100
L127	36 105.440	3 471 269.820	R130X	32 018.730	3 474 939.540
L128	36 155.720	3 471 188.550	R131	32 096.260	3 474 872.390
L129	36 335.410	3 470 942.180	R132	32 438.560	3 474 569.020
L130	36 604.750	3 470 572.330	R133	32 613.930	3 474 413.440
L131	36 959.980	3 470 085.330	R134	32 900.630	3 474 159.240
L132	37 315.790	3 469 597.050	R135	33 829.700	3 473 335.770
L133	37 329.340	3 469 582.570	R136	34 228.470	3 472 982.180
L134	37 332.690	3 469 578.990	R137	34 263.160	3 472 951.420
L135	37 461.070	3 469 403.030	R138	34 491.290	3 472 749.240
L136	37 504.730	3 469 342.340	R139	34 605.460	3 472 648.020
L137	37 539.840	3 469 292.330	R140	34 717.270	3 472 545.230
L138	37 574.720	3 469 241.640	R141	34 791.180	3 472 483.650
L139	37 608.970	3 469 190.880	R142	34 891.400	3 472 394.140
L140	37 642.370	3 469 140.230	R143	35 426.290	3 471 920.250
L141	37 737.600	3 468 991.710	R144	35 674.960	3 471 699.610
L142	38 053.380	3 468 499.240	R145	35 721.850	3 471 656.940
L143	38 333.460	3 468 062.130	R146	35 765.690	3 471 614.990
L144	38 415.580	3 467 934.050	R147	35 808.280	3 471 572.070
L145	38 478.580	3 467 852.100	R148	35 849.840	3 471 528.050
L146	38 580.170	3 467 677.030	R149	35 890.330	3 471 483.030
L147	38 663.230	3 467 552.440	R150	35 903.120	3 471 468.280
L148	38 744.040	3 467 421.330	R151	35 948.970	3 471 413.470
L149	38 932.600	3 467 127.360	R152	35 986.520	3 471 366.000

Vel
Sheet

15

Van
of

20

P754/08

PADRESERWE KOÖRDINATE / ROAD RESERVE CO-ORDINATES						
LINKERKANT/LEFT HAND SIDE				REGTERKANT/RIGHT HAND SIDE		
	Y	X	WG 19°		Y	X
L150	39 237.880	3 466	650.960	R153	36 025.510	3 471 313.940
L151	39 616.050	3 466	060.000	R154	36 068.650	3 471 244.070
L152	39 648.070	3 466	008.510	R155	36 130.460	3 471 169.860
L153	39 711.970	3 465	903.920	R156	36 309.890	3 470 923.730
L154	39 773.040	3 465	798.110	R157	36 579.360	3 470 553.850
L155	39 803.170	3 465	744.960	R158	36 920.410	3 470 085.900
L156	39 834.200	3 465	689.100	R159	37 290.380	3 469 578.450
L157	39 906.070	3 465	558.560	R160	37 296.880	3 469 566.670
L158	40 013.020	3 465	381.170	R161	37 302.280	3 469 556.900
L159	40 096.980	3 465	211.740	R162	37 430.800	3 469 380.450
L160	40 175.470	3 465	080.270	R163	37 474.040	3 469 320.350
L161	40 258.690	3 464	918.150	R164	37 508.930	3 469 270.790
L162	40 327.220	3 464	806.890	R165	37 543.380	3 469 220.750
L163	40 464.720	3 464	543.690	R166	37 577.100	3 469 170.610
L164	40 660.170	3 464	189.100	R167	37 610.490	3 469 120.160
L165	40 906.060	3 463	742.560	R168	37 698.210	3 468 983.340
L166	41 053.110	3 463	475.360	R169	38 022.160	3 468 478.030
L167	41 159.960	3 463	296.350	R170	38 301.940	3 468 041.500
L168	41 166.840	3 463	282.880	R171	38 433.100	3 467 825.000
L169	41 200.010	3 463	208.700	R172	38 548.160	3 467 657.170
L170	41 303.250	3 463	021.480	R173	38 627.640	3 467 527.370
L171	41 420.580	3 462	808.200	R174	38 794.840	3 467 272.210
L172	41 714.620	3 462	274.240	R175	38 900.030	3 467 108.020
L173	42 008.820	3 461	739.480	R176	39 206.080	3 466 630.580
L174	42 302.950	3 461	205.890	R177	39 583.800	3 466 040.300
L175	42 541.720	3 460	773.020	R178	39 615.840	3 465 988.870
L176	42 589.880	3 460	685.060	R179	39 647.620	3 465 936.660
L177	42 744.060	3 460	405.120	R180	39 679.020	3 465 884.370
L178	43 038.180	3 459	871.200	R181	39 709.870	3 465 832.040
L179	43 243.900	3 459	497.620	R182	39 740.260	3 465 779.310
L180	43 640.800	3 458	776.630	R183	39 770.150	3 465 726.670
L181	43 706.980	3 458	656.460	R184	39 801.000	3 465 671.030
L182	43 916.640	3 458	275.780	R185	39 873.280	3 465 539.710
L183	44 214.660	3 457	735.170	R186	39 962.360	3 465 366.910
L184	44 435.360	3 457	334.390	R187	40 064.300	3 465 192.960
L185	44 582.090	3 457	067.890	R188	40 134.760	3 465 058.150
L186	44 845.320	3 456	590.190	R189	40 179.010	3 464 978.120
L187	44 952.650	3 456	395.190	R190	40 259.380	3 464 838.940
L188	44 979.940	3 456	347.880	R191	40 313.860	3 464 727.890
L189	45 028.690	3 456	272.110	R192	40 402.450	3 464 578.650
L190	45 063.440	3 456	223.040	R193	40 416.650	3 464 553.000
L191	45 100.280	3 456	175.600	R194	40 637.860	3 464 151.210
L192	45 139.210	3 456	129.440	R195	40 872.860	3 463 724.550
L193	45 198.700	3 456	065.650	R196	41 019.720	3 463 457.790
L194	45 244.060	3 456	021.310	R197	41 093.260	3 463 324.240
L195	45 289.010	3 455	981.100	R198	41 123.840	3 463 262.170
L196	45 335.220	3 455	942.850	R199	41 166.850	3 463 190.660
L197	45 383.080	3 455	906.350	R200	41 261.970	3 463 017.900
L198	45 432.490	3 455	871.850	R201	41 387.700	3 462 789.790
L199	45 483.220	3 455	839.140	R202	41 975.700	3 461 721.920
L200	45 640.860	3 455	748.130	R203	42 416.600	3 460 921.390

Vel 16
Sheet

Van 20
of

P754/08

PADRESERWE KOÖRDINATE / ROAD RESERVE CO-ORDINATES											
LINKERKANT/LEFT HAND SIDE					REGTERKANT/RIGHT HAND SIDE						
	Y		X	WG 19°		Y		X			
L201	45	984.650	3	455	551.650	R204	42	497.510	3	460	765.840
L202	46	304.560	3	455	368.650	R205	42	505.300	3	460	752.980
L203	46	804.170	3	455	083.050	R206	42	555.440	3	460	668.610
L204	47	370.210	3	454	759.320	R207	42	565.130	3	460	651.590
L205	47	587.250	3	454	635.310	R208	42	769.610	3	460	280.600
L206	47	653.970	3	454	597.160	R209	43	210.820	3	459	479.530
L207	47	704.860	3	454	569.430	R210	43	671.090	3	458	643.630
L208	47	758.360	3	454	541.440	R211	43	883.970	3	458	257.040
L209	47	812.990	3	454	514.290	R212	44	181.690	3	457	716.650
L210	47	867.530	3	454	488.610	R213	44	402.460	3	457	315.860
L211	47	922.730	3	454	463.920	R214	44	549.220	3	457	049.340
L212	47	978.580	3	454	440.170	R215	44	812.040	3	456	571.710
L213	48	034.750	3	454	417.630	R216	44	916.410	3	456	381.950
L214	48	091.570	3	454	396.160	R217	44	963.360	3	456	302.010
L215	48	148.510	3	454	375.950	R218	44	997.530	3	456	250.600
L216	48	205.750	3	454	356.950	R219	45	033.090	3	456	200.650
L217	48	263.810	3	454	338.690	R220	45	070.800	3	456	152.050
L218	48	346.980	3	454	315.030	R221	45	110.570	3	456	104.770
L219	48	613.310	3	454	243.360	R222	45	152.050	3	456	059.430
L220	49	229.310	3	454	077.460	R223	45	195.660	3	456	015.400
L221	49	734.390	3	453	941.500	R224	45	220.230	3	455	992.010
L222	50	911.780	3	453	624.620	R225	45	264.240	3	455	952.660
L223	51	000.580	3	453	603.400	R226	45	311.810	3	455	913.280
L224	51	058.680	3	453	587.890	R227	45	360.500	3	455	875.150
L225	51	118.160	3	453	569.070	R228	45	410.560	3	455	839.250
L226	51	338.030	3	453	509.860	R229	45	462.370	3	455	805.910
L227	51	383.040	3	453	496.980	R230	45	505.170	3	455	782.340
L228	51	441.440	3	453	478.070	R231	45	781.060	3	455	624.580
L229	51	499.530	3	453	456.730	R232	45	811.680	3	455	601.950
L229X	51	511.560	3	453	451.880	R233	45	913.360	3	455	548.970
L230	51	556.710	3	453	432.870	R234	46	246.060	3	455	358.640
L231	51	613.030	3	453	406.790	R235	46	787.110	3	455	049.420
L232	51	668.270	3	453	378.620	R236	47	341.000	3	454	732.570
L233	51	721.440	3	453	348.610	R237	47	633.380	3	454	565.510
L234	51	774.060	3	453	316.020	R238	47	686.750	3	454	536.340
L235	51	807.850	3	453	293.530	R239	47	741.590	3	454	507.690
L236	52	554.550	3	452	782.850	R240	47	796.030	3	454	480.560
L237	53	057.930	3	452	438.390	R241	47	851.980	3	454	454.190
L238	53	485.590	3	452	145.810	R242	47	906.590	3	454	429.720
L239	53	816.180	3	451	920.030	R243	47	964.380	3	454	405.190
L240	54	541.960	3	451	423.250	R244	48	021.070	3	454	382.490
L241	54	719.050	3	451	302.060	R245	48	078.580	3	454	360.660
L242	54	813.220	3	451	237.650	R246	48	136.320	3	454	340.200
L243	54	868.740	3	451	200.150	R247	48	194.380	3	454	320.790
L244	54	971.010	3	451	133.310	R248	48	253.100	3	454	302.510
L245	55	084.630	3	451	062.360	R249	48	336.060	3	454	278.760
L246	55	516.420	3	450	799.770	R250	48	621.830	3	454	201.870
L247	55	689.160	3	450	694.690	R251	49	224.260	3	454	039.680
L248	55	722.870	3	450	675.940	R252	50	313.430	3	453	746.570
L249	55	779.490	3	450	643.490	R253	50	607.540	3	453	667.360
L250	55	829.420	3	450	609.180	R254	50	901.660	3	453	588.120

Vel	17	Van	20	P754/08
Sheet		of		

PADRESERWE KOÖRDINATE / ROAD RESERVE CO-ORDINATES					
LINKERKANT/LEFT HAND SIDE			REGTERKANT/RIGHT HAND SIDE		
	Y	X	WG 19°		X
L251	56 349.270	3 450 292.520		R255	51 314.180 3 453 477.270
L252	57 092.510	3 449 840.420		R256	51 372.150 3 453 460.870
L253	57 442.980	3 449 627.070		R257	51 429.900 3 453 442.270
L254	57 557.640	3 449 557.220		R258	51 485.790 3 453 421.560
L255	57 599.140	3 449 532.180		R259	51 541.470 3 453 398.540
L256	57 651.870	3 449 500.950		R260	51 596.150 3 453 373.100
L257	57 704.530	3 449 470.430		R261	51 649.910 3 453 345.750
L258	57 756.960	3 449 440.870		R262	51 702.220 3 453 316.100
L259	57 823.530	3 449 404.360		R263	51 753.390 3 453 284.520
L260	58 372.600	3 449 106.660		R264	51 786.870 3 453 262.300
L261	58 748.280	3 448 903.450		R265	52 533.040 3 452 751.540
L262	58 981.880	3 448 776.830		R266	53 036.320 3 452 407.450
L263	59 257.910	3 448 627.420		R267	53 464.320 3 452 114.720
L264	59 346.580	3 448 582.210		R268	53 754.600 3 451 915.710
L264X	59 430.960	3 448 536.340		R269	54 495.700 3 451 409.130
L265	59 482.600	3 448 507.630		R270	54 696.720 3 451 271.640
L266	59 647.390	3 448 415.030		R271	54 848.560 3 451 168.320
L267	59 703.790	3 448 381.020		R272	54 950.730 3 451 101.460
L268	59 737.590	3 448 359.530		R273	55 002.210 3 451 068.980
L269	59 814.020	3 448 308.390		R274	55 054.300 3 451 036.790
L270	59 864.110	3 448 272.480		R275	55 497.050 3 450 767.420
L271	59 913.130	3 448 235.620		R276	55 685.130 3 450 652.750
L272	59 972.760	3 448 187.680		R277	56 303.980 3 450 276.110
L273	60 031.460	3 448 137.910		R278	57 424.020 3 449 594.490
L274	60 079.330	3 448 095.890		R279	57 580.160 3 449 499.540
L275	60 121.820	3 448 054.330		R280	57 681.060 3 449 440.580
L276	60 174.880	3 448 001.120		R281	57 738.680 3 449 407.890
L277	60 652.060	3 447 507.520		R282	57 805.370 3 449 371.210
L278	60 930.140	3 447 220.020		R283	58 354.960 3 449 073.610
L279	60 963.420	3 447 250.500		R284	58 731.010 3 448 870.060
L280	60 980.200	3 447 232.970		R285	58 941.720 3 448 755.660
L281	60 947.130	3 447 202.400		R286	59 212.670 3 448 609.060
L282	61 288.540	3 446 849.590		R287	59 320.080 3 448 549.410
L283	61 330.460	3 446 804.320		R288	59 479.960 3 448 461.740
L284	61 369.550	3 446 756.700		R289	59 561.110 3 448 417.670
L285	61 405.800	3 446 706.220		R290	59 638.380 3 448 374.500
L286	61 438.360	3 446 653.320		R291	59 664.710 3 448 360.790
L287	61 467.700	3 446 598.170		R292	59 717.060 3 448 327.910
L288	61 493.110	3 446 541.360		R293	59 767.500 3 448 294.670
L289	61 514.630	3 446 482.990		R294	59 817.300 3 448 259.890
L290	61 533.340	3 446 419.280		R295	59 866.350 3 448 223.900
L291	61 659.600	3 445 921.480		R296	59 913.900 3 448 187.010
L292	61 724.320	3 445 700.120		R297	59 960.870 3 448 148.710
L293	61 750.150	3 445 566.150		R298	60 007.010 3 448 109.310
L294	61 784.280	3 445 449.330		R299	60 051.890 3 448 068.750
L295	61 802.600	3 445 359.490		R300	60 095.700 3 448 027.150
L296	61 810.560	3 445 328.000		R301	60 148.070 3 447 974.610
L297	61 856.570	3 445 178.300		R302	60 456.020 3 447 656.180
L298	61 868.950	3 445 117.580		R303	60 625.620 3 447 480.860
L299	61 874.530	3 445 088.710		R304	60 879.590 3 447 217.910
L300	61 877.860	3 445 073.710		R305	60 864.720 3 447 203.400

Vel	18	Van	20	P754/08
Sheet		of		

PADRESERWE KOÖRDINATE / ROAD RESERVE CO-ORDINATES									
LINKERKANT/LEFT HAND SIDE					REGTERKANT/RIGHT HAND SIDE				
	Y	X	WG 19°		Y	X			
L301	61	923.180	3 444	884.750	R306	60	898.660	3 447	168.400
L302	61	959.880	3 444	739.180	R307	60	922.000	3 447	174.070
L303	62	005.910	3 444	571.050	R308	61	272.540	3 446	811.680
L304	62	057.510	3 444	354.550	R309	61	302.620	3 446	779.200
L305	62	086.350	3 444	240.720	R310	61	340.170	3 446	733.410
L306	62	158.900	3 443	957.210	R311	61	374.950	3 446	684.630
L307	62	307.970	3 443	370.930	R312	61	406.270	3 446	633.930
L308	62	332.330	3 443	288.760	R313	61	434.280	3 446	581.180
L309	62	366.920	3 443	136.760	R314	61	458.370	3 446	526.860
L310	62	451.360	3 442	804.280	R315	61	479.000	3 446	470.760
L311	62	481.980	3 442	707.640	R316	61	496.910	3 446	409.560
L312	62	506.060	3 442	649.710	R317	61	623.310	3 445	911.750
L313	62	533.260	3 442	596.180	R318	61	653.410	3 445	793.500
L314	62	579.500	3 442	520.780	R319	61	679.340	3 445	673.540
L315	62	615.560	3 442	471.560	R320	61	721.010	3 445	527.700
L316	62	666.180	3 442	413.150	R321	61	739.310	3 445	437.430
L317	62	827.330	3 442	241.990	R322	61	766.120	3 445	350.020
L318	62	927.040	3 442	136.100	R323	61	788.420	3 445	261.820
L319	62	969.360	3 442	099.570	R324	61	799.410	3 445	201.160
L320	63	020.800	3 442	035.610	R325	61	814.430	3 445	128.520
L321	63	123.960	3 441	925.040	R326	61	863.490	3 444	965.660
L322	63	547.420	3 441	473.290	R327	61	883.200	3 444	876.760
L323	63	636.680	3 441	383.210	R328	61	912.880	3 444	770.330
L324	63	734.590	3 441	273.850	R329	61	957.930	3 444	581.300
L325	64	154.490	3 440	825.670	R330	62	008.110	3 444	387.400
L326	64	313.640	3 440	656.200	R331	62	020.880	3 444	346.700
L327	64	338.200	3 440	629.630	R332	62	126.460	3 443	930.810
L328	64	426.180	3 440	535.070	R333	62	246.080	3 443	459.720
L329	64	459.630	3 440	500.540	R334	62	269.790	3 443	361.230
L330	64	600.190	3 440	350.390	R335	62	289.580	3 443	273.810
L331	64	687.620	3 440	256.850	R336	62	313.590	3 443	193.510
L332	64	882.830	3 440	048.000	R337	62	414.680	3 442	795.490
L333	64	944.190	3 439	976.120	R338	62	427.510	3 442	750.020
L334	65	001.110	3 439	904.800	R339	62	447.790	3 442	691.390
L335	65	055.890	3 439	830.210	R340	62	471.890	3 442	634.150
L336	65	169.500	3 439	666.990	R341	62	499.970	3 442	578.500
L337	65	260.690	3 439	552.250	R342	62	531.850	3 442	524.510
L338	65	279.190	3 439	505.810	R343	62	566.930	3 442	473.250
L339	65	310.020	3 439	461.400	R344	62	605.480	3 442	424.300
L340	66	066.130	3 438	363.320	R345	62	638.640	3 442	387.440
L341	66	441.230	3 437	818.520	R346	62	787.270	3 442	228.680
L342	66	585.060	3 437	609.860	R347	62	844.740	3 442	167.770
L343	66	635.150	3 437	541.680	R348	62	912.870	3 442	086.160
L343X	66	637.360	3 437	539.010	R349	62	941.240	3 442	050.070
L344	66	671.120	3 437	506.340	R350	62	996.900	3 441	997.120
L345	66	692.540	3 437	485.740	R351	63	084.140	3 441	912.110
L346	66	737.980	3 437	446.930	R352	63	459.960	3 441	511.540
L347	66	785.820	3 437	412.450	R353	63	621.190	3 441	333.340
L348	66	836.530	3 437	381.500	R354	63	668.210	3 441	289.490
L349	66	889.930	3 437	354.710	R355	64	126.450	3 440	800.620
L350	66	944.740	3 437	332.290	R356	64	293.360	3 440	622.260

Vel	19	Van	20	P754/08
Sheet		of		

PADRESERWE KOÖRDINATE / ROAD RESERVE CO-ORDINATES							
LINKERKANT/LEFT HAND SIDE			REGTERKANT/RIGHT HAND SIDE				
	Y	X	WG 19°		Y	X	
L351	67 001.080	3 437	314.450	R357	64 336.330	3 440 576.300	
L352	67 052.660	3 437	302.190	R358	64 564.370	3 440 333.330	
L353	67 118.550	3 437	292.420	R359	64 680.490	3 440 209.400	
L354	67 177.680	3 437	288.580	R360	64 835.270	3 440 044.220	
L355	67 236.920	3 437	289.480	R361	64 875.780	3 439 998.830	
L356	67 296.100	3 437	294.890	R362	64 933.790	3 439 929.570	
L357	67 358.400	3 437	306.320	R363	64 971.070	3 439 882.240	
L358	67 416.900	3 437	321.620	R364	65 007.380	3 439 833.540	
L359	67 935.930	3 437	482.080	R365	65 042.680	3 439 783.190	
L360	68 091.320	3 437	530.200	R366	65 183.310	3 439 578.780	
L361	68 141.190	3 437	542.840	R367	65 233.850	3 439 493.140	
L362	68 203.660	3 437	552.930	R368	65 260.770	3 439 466.430	
L363	68 266.710	3 437	555.350	R369	65 318.720	3 439 382.240	
L364	68 329.320	3 437	550.830	R370	65 664.320	3 438 880.620	
L365	68 391.650	3 437	539.500	R371	66 035.270	3 438 341.800	
L366	68 451.060	3 437	521.430	R372	66 407.680	3 437 801.010	
L367	68 509.320	3 437	496.620	R373	66 551.330	3 437 586.920	
L368	68 566.100	3 437	464.750	R374	66 579.970	3 437 547.940	
L369	68 614.760	3 437	427.040	R375	66 600.640	3 437 523.040	
L370	68 669.530	3 437	377.970	R376	66 620.940	3 437 500.000	
L371	68 705.260	3 437	337.900	R377	66 667.030	3 437 457.890	
L372	68 748.080	3 437	275.090	R378	66 714.410	3 437 417.400	
L373	68 963.760	3 436	907.320	R379	66 765.100	3 437 380.900	
L374	69 019.890	3 436	815.510	R380	66 818.490	3 437 348.350	
L375	69 081.010	3 436	735.400	R381	66 874.440	3 437 320.150	
L376	69 314.940	3 436	439.450	R382	66 932.510	3 437 296.560	
L377	69 640.790	3 436	026.510	R383	66 991.800	3 437 277.770	
L378	69 716.530	3 435	920.530	R384	67 055.130	3 437 264.340	
L379	69 740.010	3 435	863.510	R385	67 114.710	3 437 254.880	
L380	69 773.120	3 435	717.030	R386	67 176.770	3 437 250.890	
L381	69 781.480	3 435	702.320	R387	67 239.670	3 437 251.820	
				R388	67 301.470	3 437 257.570	
				R389	67 360.210	3 437 267.850	
				R390	67 428.730	3 437 285.740	
				R391	67 947.610	3 437 446.190	
				R392	68 102.210	3 437 494.020	
				R393	68 150.380	3 437 506.540	
				R394	68 209.280	3 437 515.550	
				R395	68 268.450	3 437 517.720	
R408	69 030.200	3 436	740.070	R396	68 327.550	3 437 513.260	
R409	69 063.950	3 436	696.570	R397	68 384.470	3 437 502.450	
R410	69 271.780	3 436	433.500	R398	68 439.760	3 437 485.620	
R411	69 610.430	3 436	004.890	R399	68 493.970	3 437 462.590	
R412	69 646.300	3 435	954.220	R400	68 545.050	3 437 433.720	
R413	69 673.110	3 435	901.450	R401	68 592.860	3 437 399.010	
R414	69 696.650	3 435	843.420	R402	68 637.150	3 437 358.860	
R415	69 709.050	3 435	811.150	R403	68 674.850	3 437 315.830	
R416	69 718.520	3 435	783.690	R404	68 716.270	3 437 255.070	
R417	69 727.040	3 435	756.100	R405	68 931.530	3 436 887.700	
R418	69 734.730	3 435	728.210	R406	68 956.190	3 436 847.100	
R419	69 742.500	3 435	694.110	R407	68 990.070	3 436 795.310	
				Vel	20	Van 20	P754/08
				Sheet		of	