

Government Gazette Staatskoerant

REPUBLIC OF SOUTH AFRICA
REPUBLIEK VAN SUID-AFRIKA

Vol. 544

Pretoria, 25 October
Oktober 2010

No. 33648

IMPORTANT NOTICE

The Government Printing Works will not be held responsible for faxed documents not received due to errors on the fax machine or faxes received which are unclear or incomplete. Please be advised that an "OK" slip, received from a fax machine, will not be accepted as proof that documents were received by the GPW for printing. If documents are faxed to the GPW it will be the sender's responsibility to phone and confirm that the documents were received in good order.

Furthermore the Government Printing Works will also not be held responsible for cancellations and amendments which have not been done on original documents received from clients.

CONTENTS**INHOUD**

<i>No.</i>	<i>Page No.</i>	<i>Gazette No.</i>	<i>No.</i>	<i>Bladsy No.</i>	<i>Koerant No.</i>
GOVERNMENT NOTICE			GOEWERMENTSKENNISGEWING		
Transport, Department of			Vervoer, Departement van		
<i>Government Notice</i>			<i>Goewermentskennisgewing</i>		
922			922		
South African National Roads Agency Limited and the National Roads Act (7/1998): The South African National Roads Agency Limited: Declaration amendment of National Road R35 Section 1: Amendment of Declaration No. 175 of 2007	3	33648	Suid-Afrikaanse Nasionale Padagentskap Beperk en die Nasionale Paaie Wet (7/1998): Die Suid-Afrikaanse Nasionale Padagentskap Beperk: Verklaring wysiging van Nasionale Pad R35 Seksie 1: Wysiging van Verklaring No. 175 van 2007	4	33648

GOVERNMENT NOTICE

DEPARTMENT OF TRANSPORT

No. 922

25 October 2010

THE SOUTH AFRICAN NATIONAL ROADS AGENCY LIMITED

Registration No: 98/09584/06

DECLARATION AMENDMENT OF NATIONAL ROAD R35 SECTION 1

AMENDMENT OF DECLARATION No. 175 OF 2007

By virtue of section 40(1)(b) of the South African National Roads Agency Limited and the National Roads Act, 1998 (Act No. 7 of 1998), I hereby amend Declaration No. 175 of 2007, by substituting Annexure paragraphs (II) and (III), with the subjoined sheets 1 to 18 of Plan No. P771/09.

(National Road R35 Section 1: Amersfoort – N17)


MINISTER OF TRANSPORT

(Acting Minister)

35/09/2010

GOEWERMENTSKENNISGEWING

DEPARTEMENT VAN VERVOER

No. 922

25 Oktober 2010

DIE SUID-AFRIKAANSE NASIONALE PADAGENTSKAP BEPERK

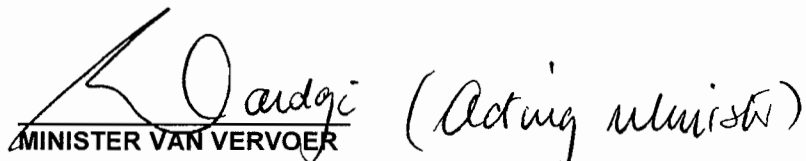
Registrasie No: 98/09584/06

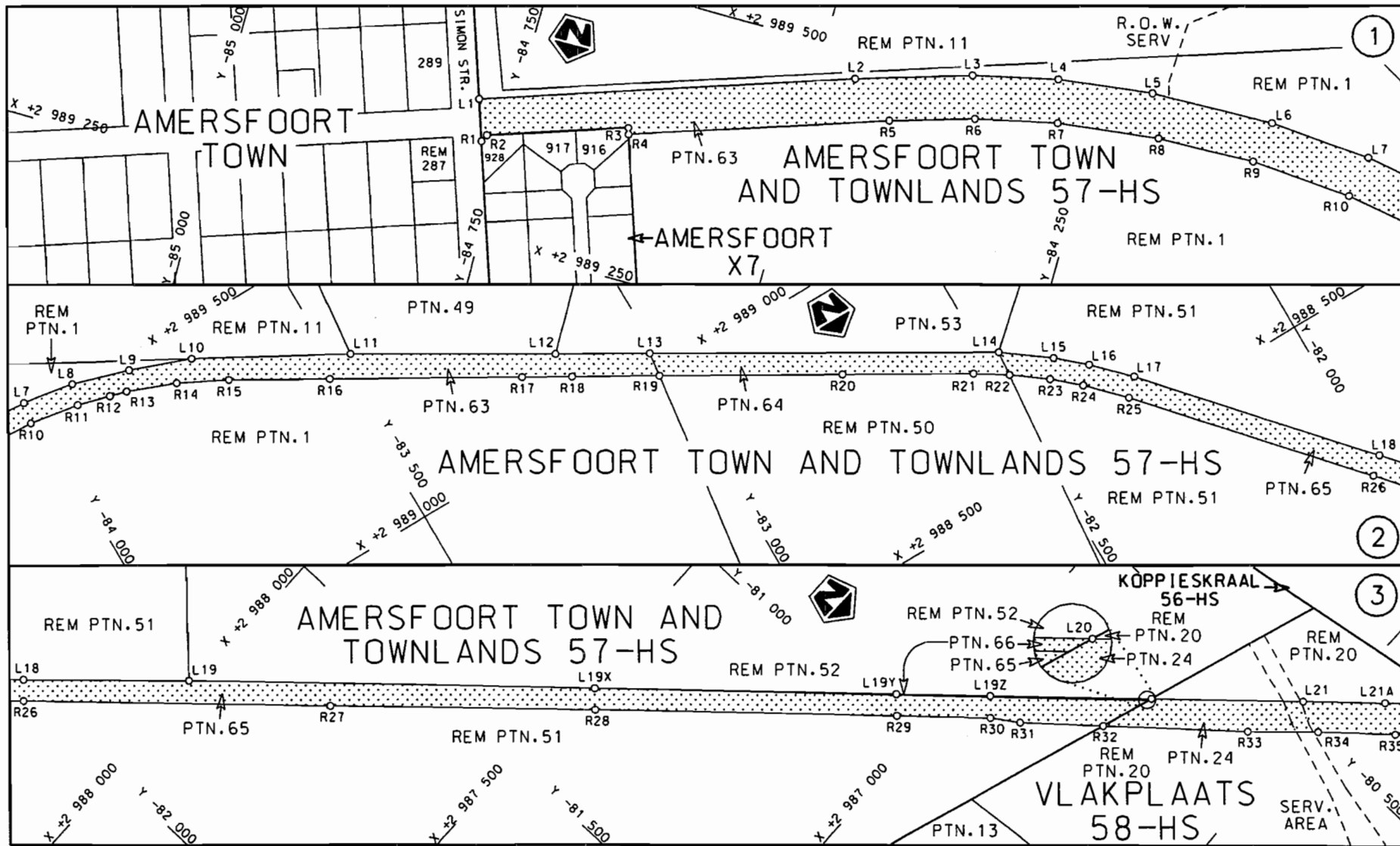
VERKLARING WYSIGING VAN NASIONALE PAD R35 SEKSIE 1.

WYSIGING VAN VERKLARING NO. 175 VAN 2007

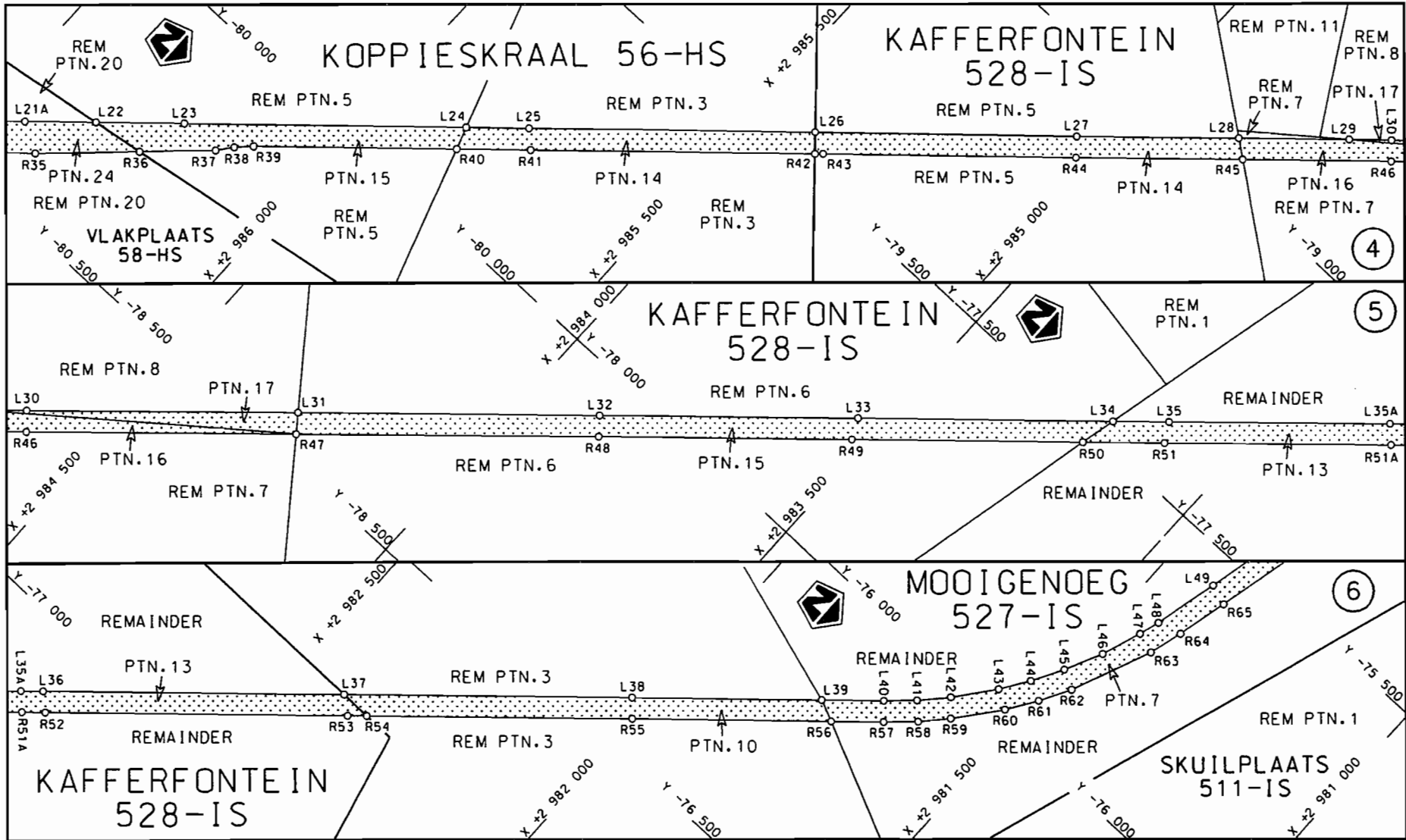
Kragtens Artikel 40(1)(b) van die Suid-Afrikaanse Nasionale Padagentskap Beperk en die Nasionale Paaie Wet, 1998 (Wet no. 7 van 1998), wysig ek hiermee Verklaring no. 175 van 2007, deur Bylae paragrawe (II) en (III), te vervang met meegaande velle 1 tot 18 van Plan no. P771/09.


(Nasionale Pad R35 Seksie 1: Amersfoort – N17)

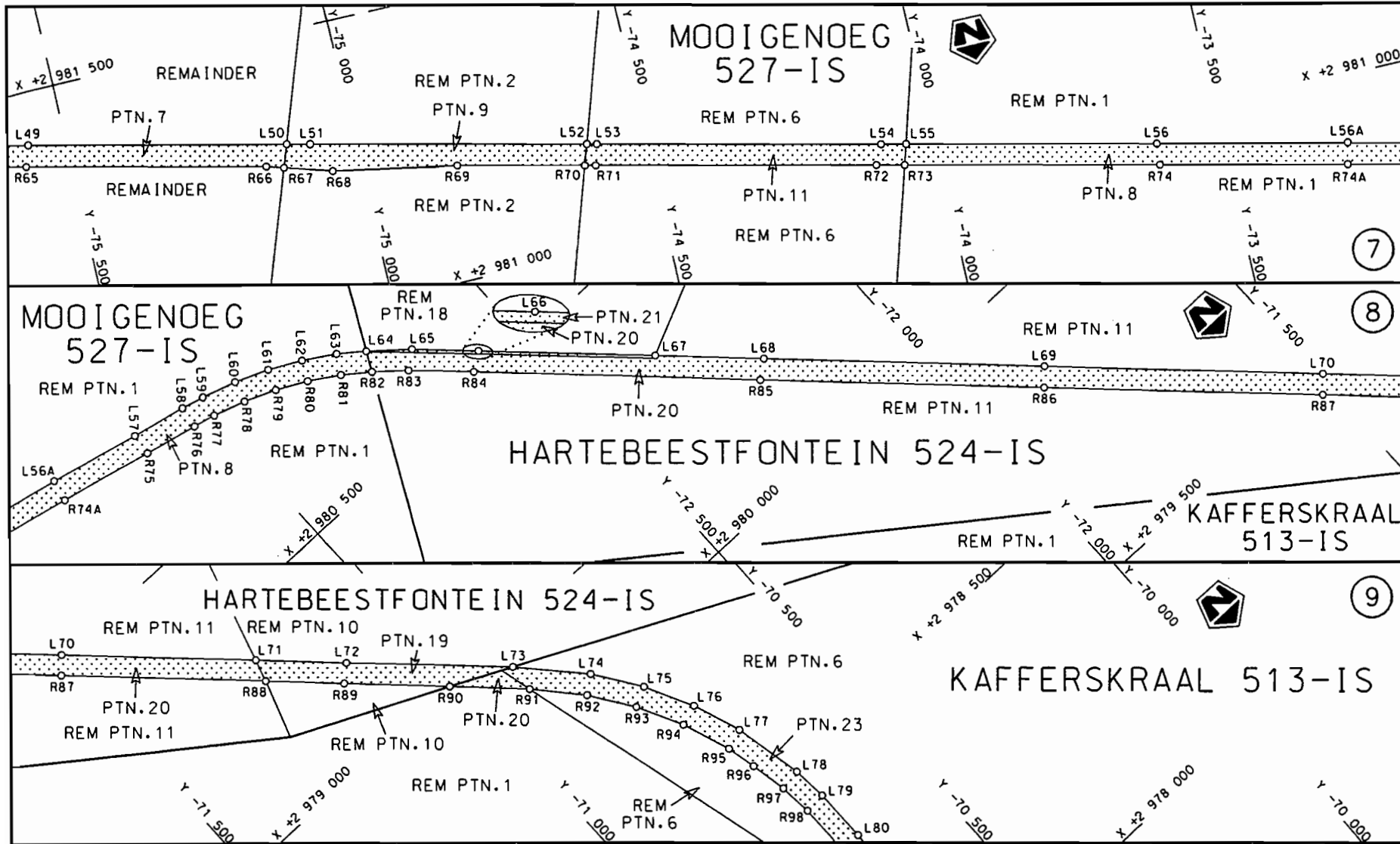

MINISTER VAN VERVOER (Acting Minister)
30/09/2010



<p>Die Suid Afrikaanse Nasionale Padagentskap Beperk The South African National Roads Agency Limited</p>	<p>Die figuur getoon The figure shown</p>	<p>steldie padreserwe voor van 'n gedeelte represents the road reserve of a portion van Nasionale Roete R35 Seksie Section of Notional Route 1</p>	<p>Vel Sheet 1 van of 18 Plan P771/09</p>
--	---	--	---

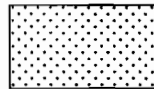


<p>Die Suid Afrikaanse Nasionale Padagentskap Beperk The South African National Roads Agency Limited</p>	<p>Die figuur getoon The figure shown</p>		<p>steldie padreserwe voor van 'n gedeelte represents the road reserve of a portion von Nasionale Roete R35 Seksie of National Route Section 1</p>	<p>Vel Sheet 2 van 18 of</p>
				<p>Plan P771/09</p>



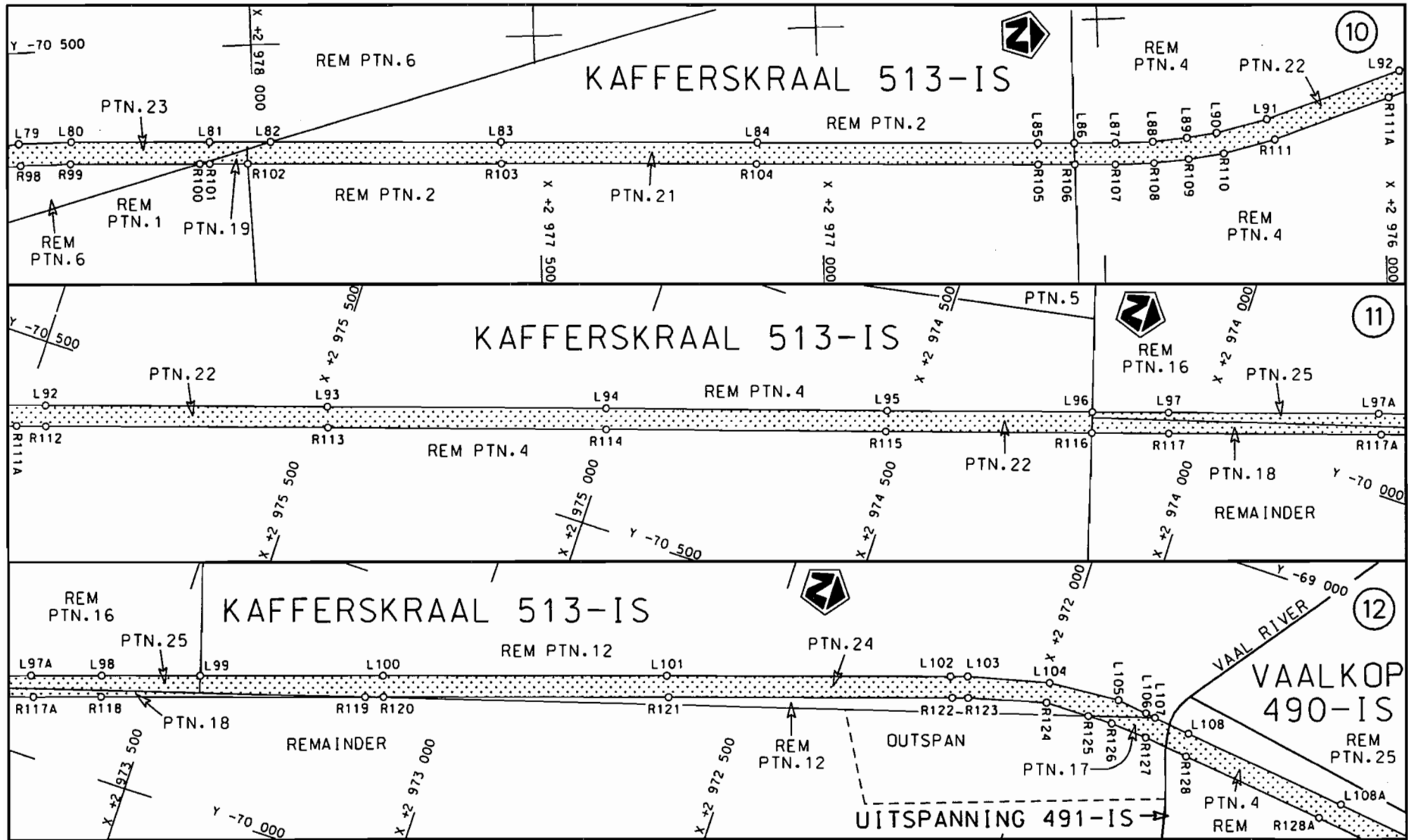
Die Suid Afrikaanse Nasionale Padagentskap Beperk
The South African National Roads Agency Limited

Die figuur getoon
The figure shown

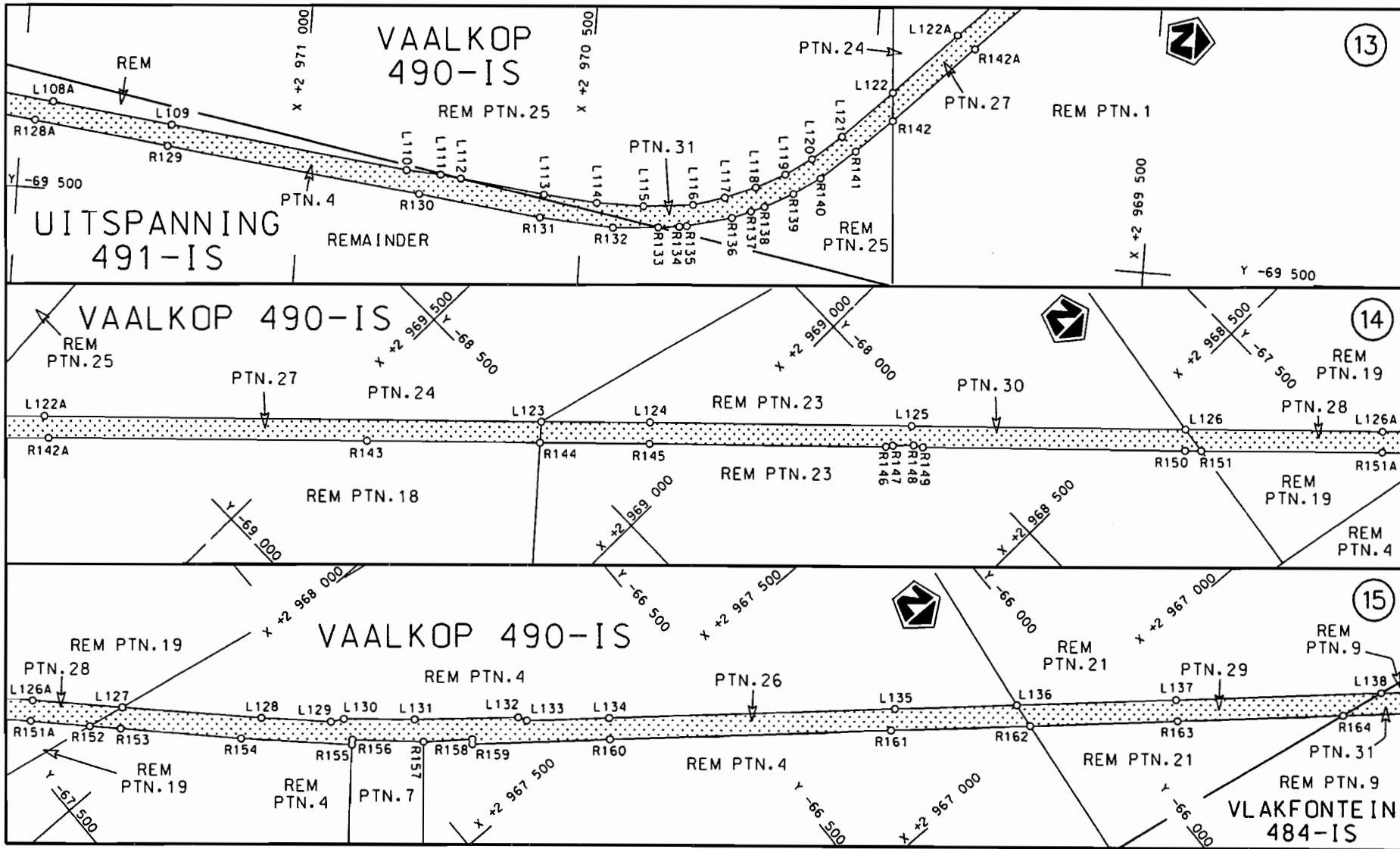


steldie padreserwe voor van 'n gedeelte
represents the road reserve of a portion
van Nasionale Roete R35 Seksie 1
of National Route R35 Section 1

Vel Sheet 3 van 18
Plan P771/09

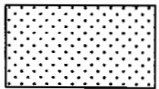


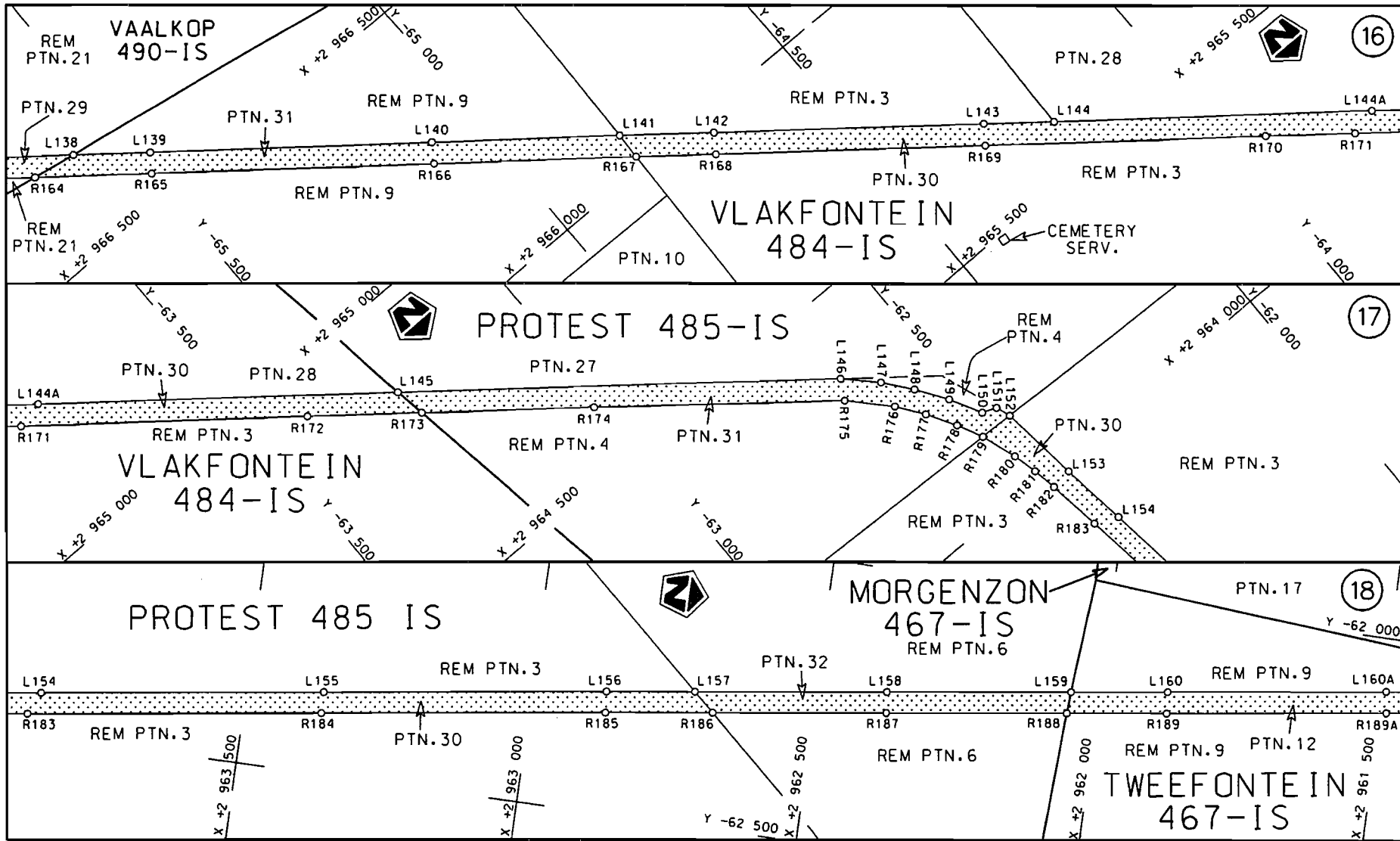
<p>Die Suid Afrikaanse Nasionale Padagentskap Beperk The South African National Roads Agency Limited</p>	<p>Die figuur getoon The figure shown</p>		<p>steldie padreserwe voor van 'n gedeelte represents the road reserve of a portion van Nasionale Roete R35 Seksie 1 of National Route</p>	<p>Vel Sheet 4 van of 18</p>
				<p>Plan P771/09</p>



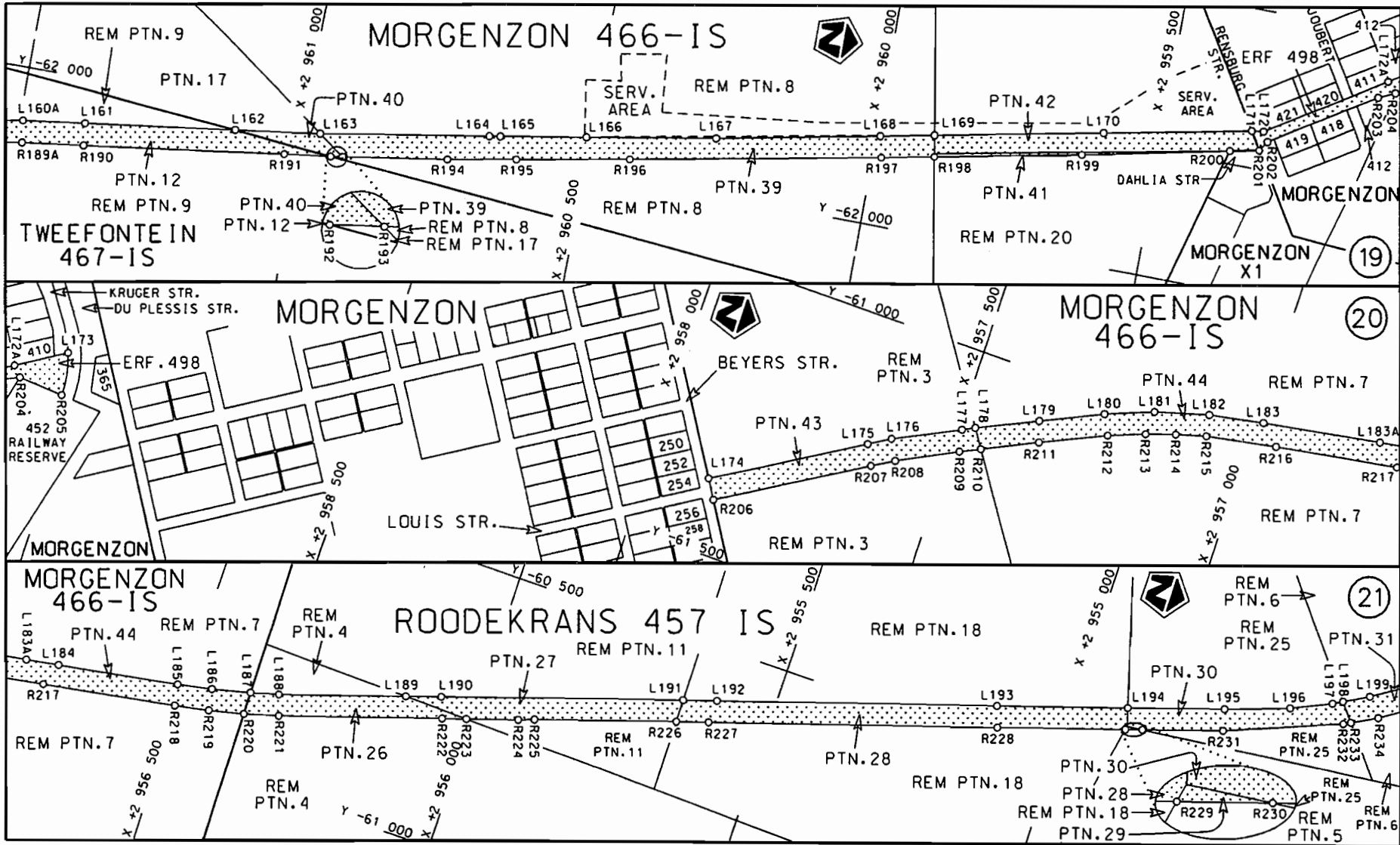
STAATSKOERANT, 25 OKTOBER 2010

No. 33648 9

Die Suid Afrikaanse Nasionale Padagentskap Beperk	Die figuur getoon		steldie padreserwe voor van 'n gedeelte represents the road reserve of a portion van Nasionale Roete R35 Sektie 1	Vel Sheet 5 van of 18
The South African National Roads Agency Limited	The figure shown		of National Route R35 Sektie 1	Plan P771/09



<p>Die Suid Afrikaanse Nasionale Padagentskap Beperk The South African National Roads Agency Limited</p>	<p>Die figuur getoon The figure shown</p>		<p>steldie podreserwe voor van 'n gedeelte represents the road reserve of a portion van Nasionale Roete R35 Seksie 1 of National Route Section</p>	<p>Vel Sheet 6 van of 18</p>
				<p>Plan P771/09</p>



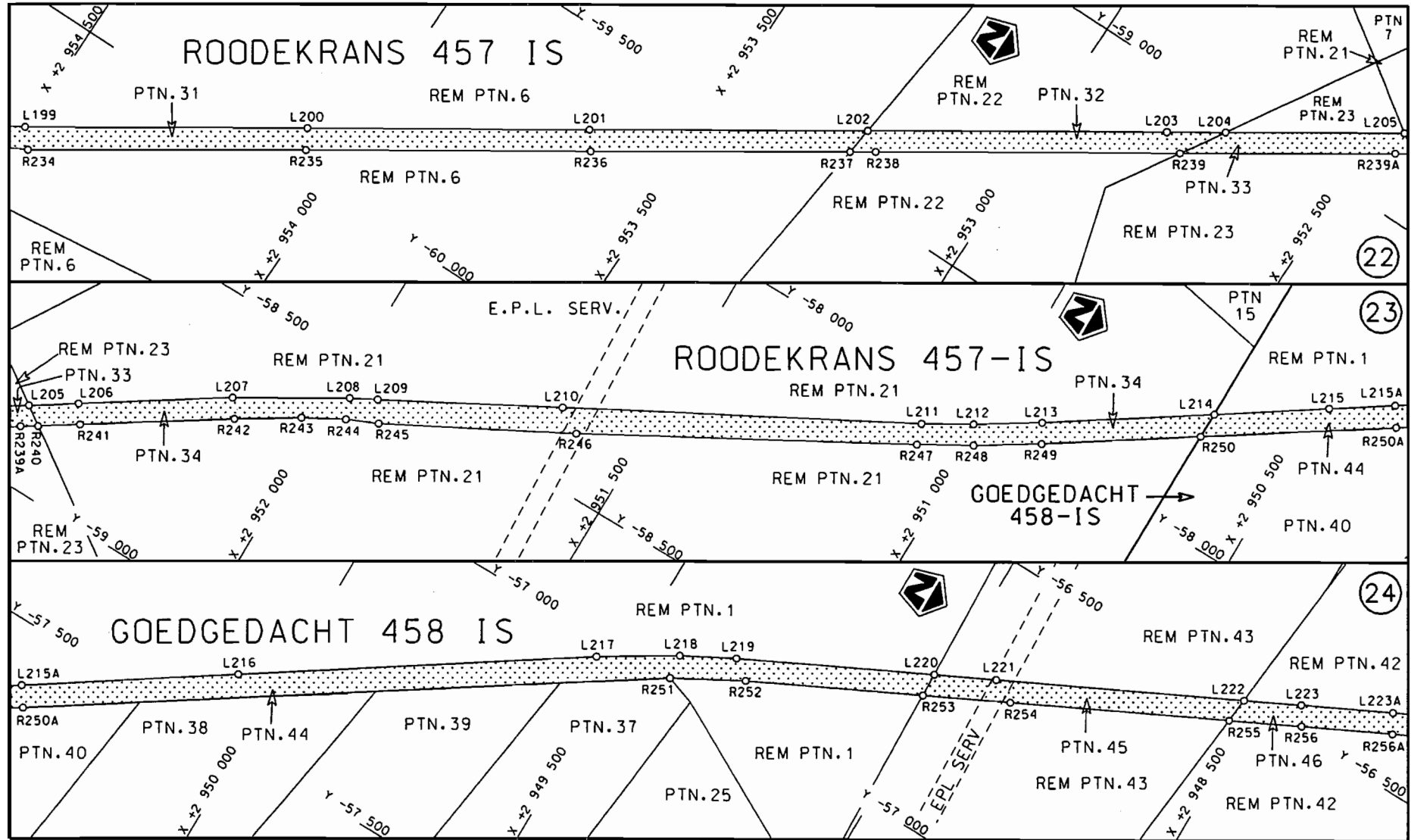
Die Suid Afrikaanse Nasionale Padogenskap Beperk
 The South African National Roads Agency Limited

Die figuur getoon
 The figure shown

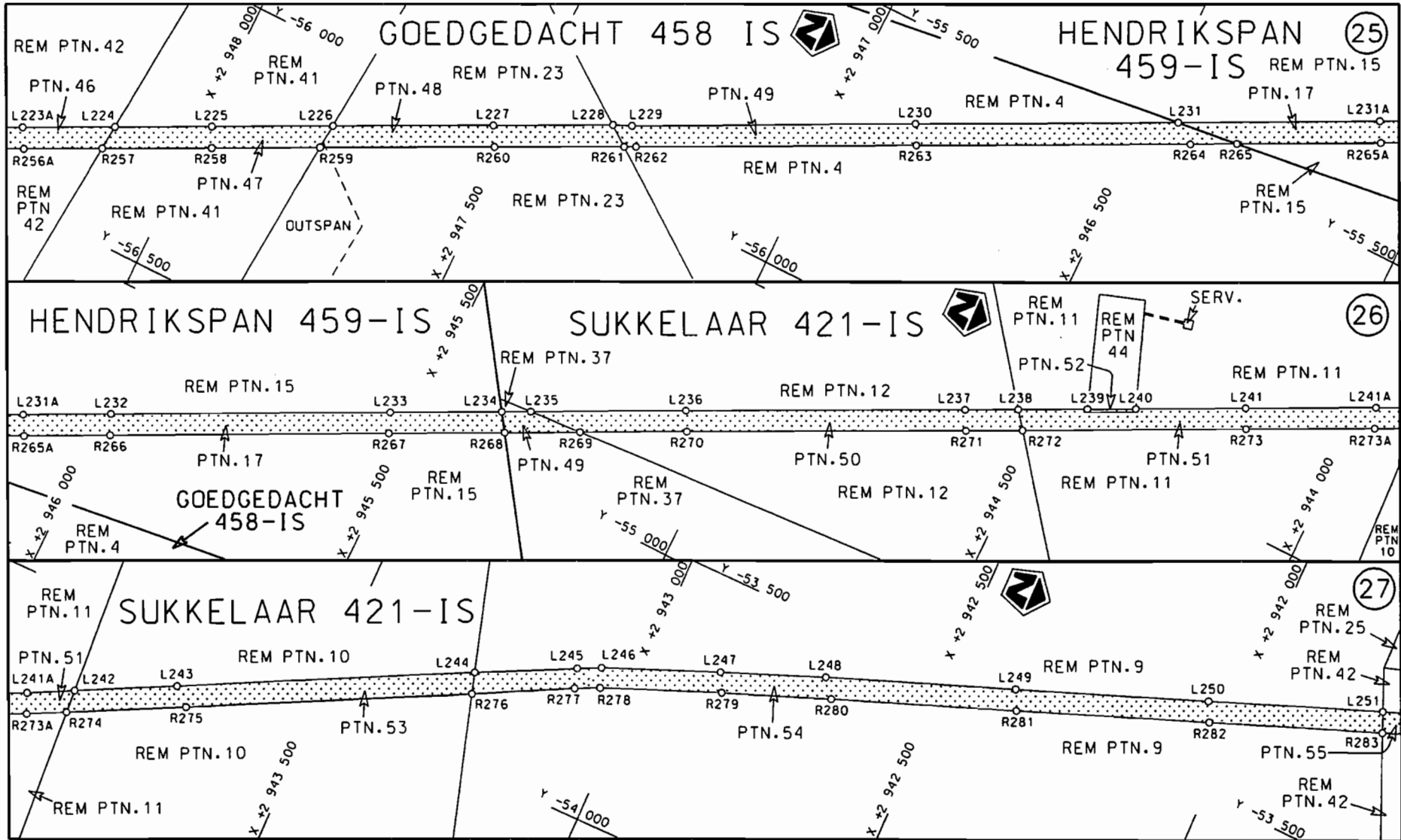


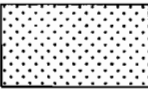
steldie padreserwe voor van 'n gedeelte
 represents the road reserve of a portion
 van Nasionale Roete R35 Sektie 1
 of National Route R35 Section 1

Vel Sheet 7 van 18
 Plan P771/09

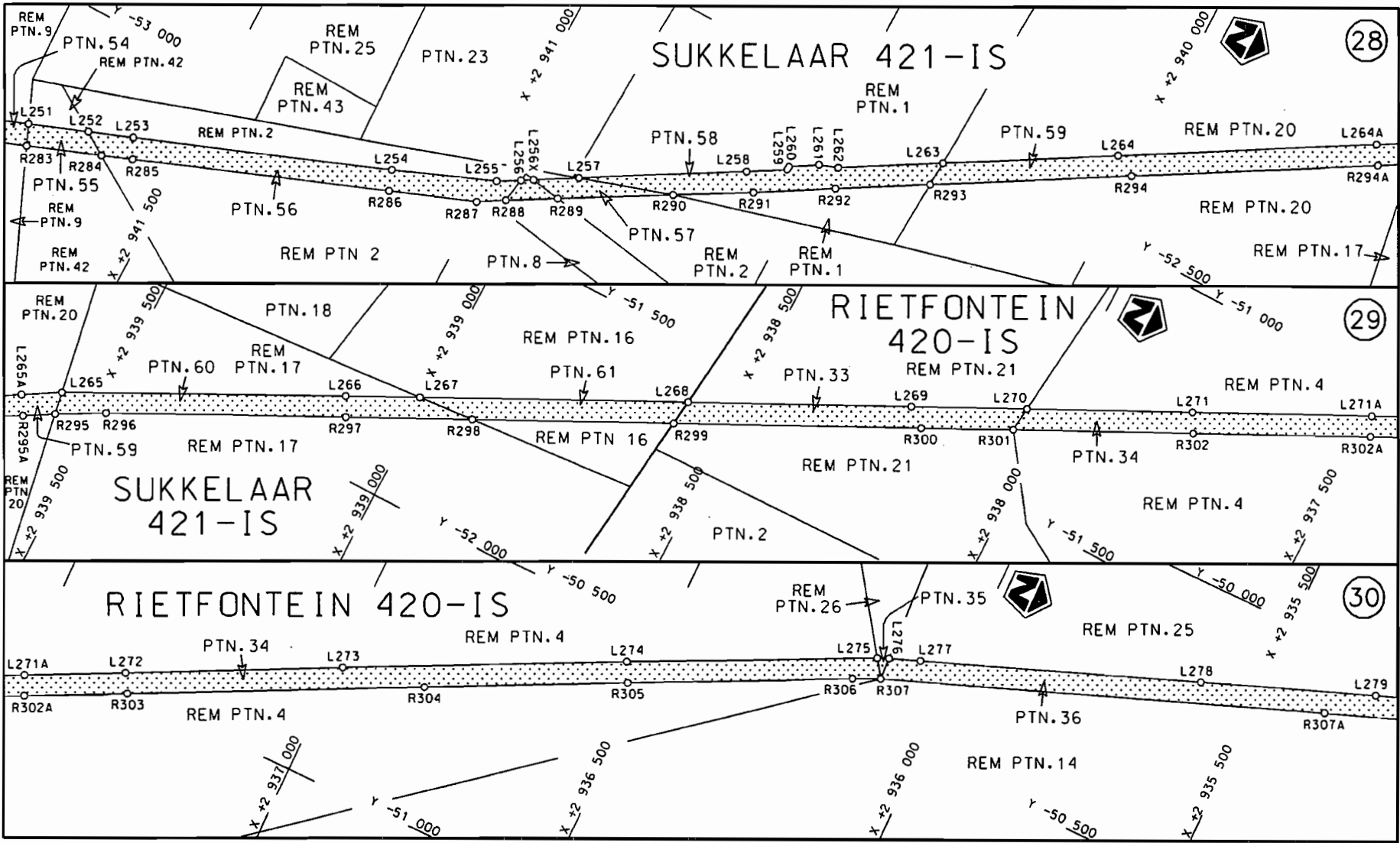


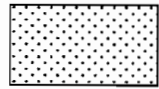
<p>Die Suid Afrikaanse Nasionale Padagentskap Beperk The South African National Roads Agency Limited</p>	<p>Die figuur getoon The figure shown</p>		<p>steldie padreserwe voor van 'n gedeelte represents the road reserve of a portion van Nasionale Roete R35 Sektie of National Route R35 Section 1</p>	<p>Vel Sheet 8 van of 18</p>
				<p>Plan P771/09</p>

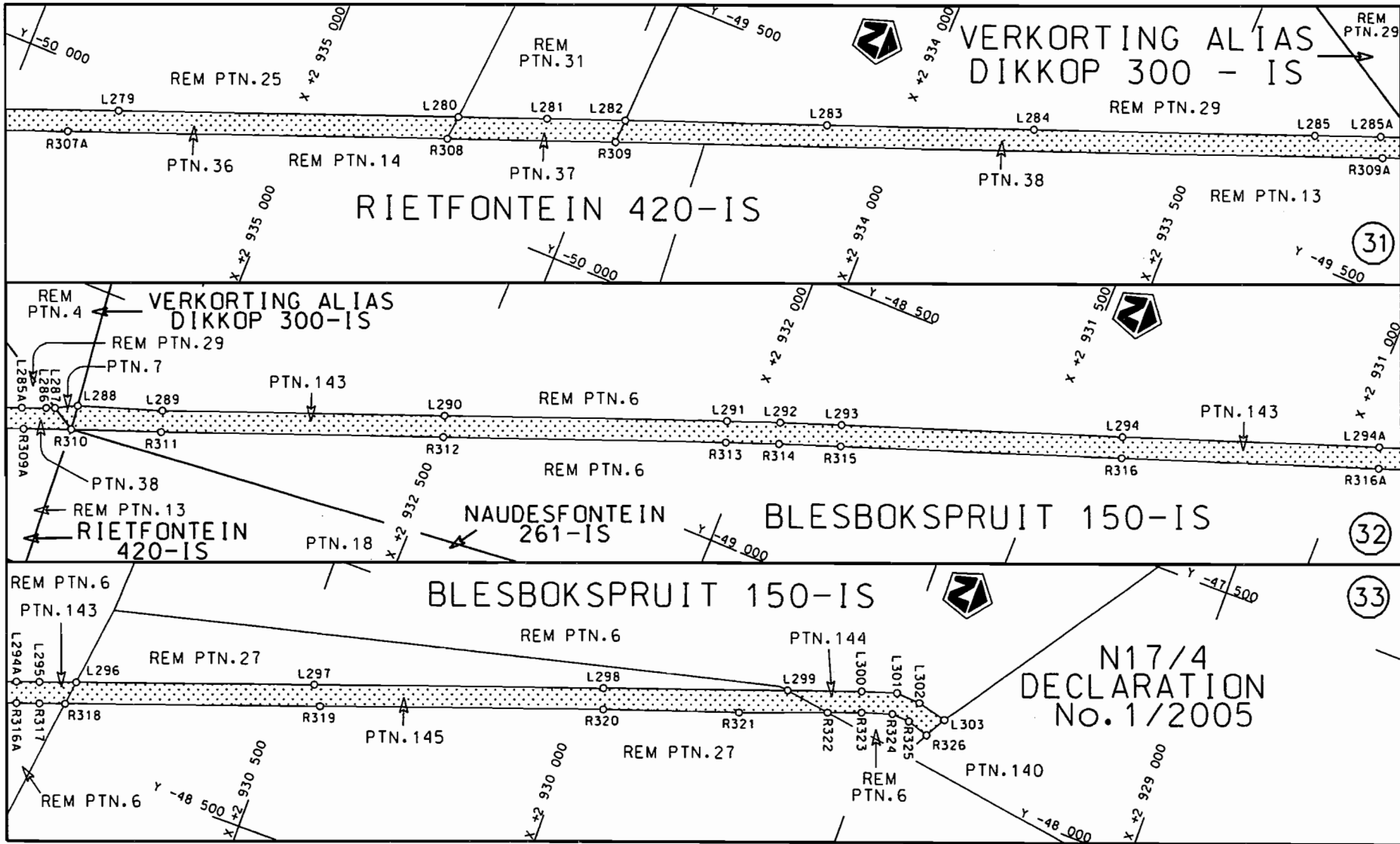


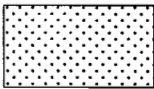
<p>Die Suid Afrikaanse Nasionale Padagentskap Beperk The South African National Roads Agency Limited</p>	<p>Die figuur getoon The figure shown</p> 	<p>steldie padreserwe voor van 'n gedeelte represents the road reserve of a portion van Nasionale Roete R35 Seksie Section of National Route 1</p>	<p>Vel Sheet 9 van of 18 Plan P771/09</p>
--	--	--	---

STAATSKOERANT, 25 OKTOBER 2010 No. 33648 13



<p>Die Suid Afrikaanse Nasionale Padagentskap Beperk The South African National Roads Agency Limited</p>	<p>Die figuur getoon The figure shown</p> 	<p>steldie padreserwe voor van 'n gedeelte represents the road reserve of a portion van Nasionale Roete R35 Seksie Section of National Route R35 Sektie Section</p>	<p>Vel Sheet 10 van of 18 Plan P771/09</p>
--	--	---	--



<p>Die Suid Afrikaanse Nasionale Padagentskap Beperk The South African National Roads Agency Limited</p>	<p>Die figuur getoon The figure shown</p>	<p></p> <p>steldie padreserwe voor van 'n gedeelte represents the road reserve of a portion van Nasionale Roete R35 Sektie 1 of National Route R35 Section 1</p>	<p>Vel Sheet 11 van 18 of 18</p>
			<p>Plan P771/09</p>

PADRESERWE KOÖRDINATE / ROAD RESERVE CO-ORDINATES					
LINKERKANT/LEFT HAND SIDE				REGTERKANT/RIGHT HAND SIDE	
	Y	X	WG 29°	Y	X
L1	-84 782.610	2 989 370.690		R1	-84 770.860 2 989 335.590
L2	-84 466.230	2 989 476.800		R2	-84 767.700 2 989 341.940
L3	-84 366.280	2 989 507.710		R3	-84 649.180 2 989 381.670
L4	-84 291.650	2 989 525.070		R4	-84 647.330 2 989 376.150
L5	-84 208.190	2 989 536.090		R5	-84 427.240 2 989 449.960
L6	-84 098.630	2 989 539.590		R6	-84 354.370 2 989 471.980
L7	-84 008.330	2 989 533.060		R7	-84 282.240 2 989 488.340
L8	-83 917.570	2 989 517.330		R8	-84 192.610 2 989 499.690
L9	-83 818.820	2 989 487.080		R9	-84 105.770 2 989 502.390
L10	-83 712.680	2 989 447.470		R10	-84 015.790 2 989 495.940
L11	-83 466.170	2 989 311.440		R11	-83 927.890 2 989 480.880
L12	-83 155.030	2 989 127.330		R12	-83 870.910 2 989 465.060
L13	-83 011.740	2 989 043.520		R13	-83 841.550 2 989 457.080
L14	-82 475.090	2 988 729.630		R14	-83 757.670 2 989 424.270
L15	-82 396.140	2 988 671.700		R15	-83 674.840 2 989 381.610
L16	-82 347.810	2 988 629.640		R16	-83 519.810 2 989 292.040
L17	-82 289.910	2 988 571.240		R17	-83 226.900 2 989 122.370
L18	-81 984.920	2 988 231.620		R18	-83 150.380 2 989 078.100
L19	-81 786.740	2 988 014.540		R19	-83 017.040 2 989 000.880
L19X	-81 308.810	2 987 479.980		R20	-82 735.230 2 988 837.670
L19Y	-80 950.560	2 987 081.400		R21	-82 533.530 2 988 720.430
L19Z	-80 838.610	2 986 956.730		R22	-82 478.770 2 988 685.750
L20	-80 647.460	2 986 744.110		R23	-82 420.440 2 988 642.720
L21	-80 466.460	2 986 542.780		R24	-82 375.250 2 988 603.720
L22	-80 284.560	2 986 340.800		R25	-82 316.780 2 988 544.520
L23	-80 180.550	2 986 225.310		R26	-82 012.250 2 988 206.470
L24	-79 847.810	2 985 854.770		R27	-81 648.420 2 987 800.700
L25	-79 773.350	2 985 771.850		R28	-81 335.720 2 987 454.160
L26	-79 434.130	2 985 395.160		R29	-80 977.850 2 987 055.200
L27	-79 123.490	2 985 048.690		R30	-80 866.680 2 986 930.780
L28	-78 931.880	2 984 835.900		R31	-80 836.510 2 986 886.390
L29	-78 799.880	2 984 689.320		R32	-80 740.490 2 986 774.980
L30	-78 749.670	2 984 633.560		R33	-80 572.140 2 986 579.670
L31	-78 428.120	2 984 276.750		R34	-80 487.500 2 986 487.330
L32	-78 072.280	2 983 880.580		R35	-80 397.670 2 986 384.540
L33	-77 765.560	2 983 539.680		R36	-80 269.830 2 986 250.550
L34	-77 462.840	2 983 202.670		R37	-80 177.240 2 986 153.520
L35	-77 396.430	2 983 128.730		R38	-80 150.700 2 986 132.860
L36	-77 107.520	2 982 807.660		R39	-80 126.100 2 986 108.380
L37	-76 751.410	2 982 411.690		R40	-79 886.600 2 985 841.930
L38	-76 411.580	2 982 033.900		R41	-79 798.840 2 985 744.290
L39	-76 186.220	2 981 783.530		R42	-79 462.190 2 985 370.280
L40	-76 112.280	2 981 701.380		R43	-79 452.430 2 985 359.440
L41	-76 072.160	2 981 659.160		R44	-79 151.740 2 985 024.930
L42	-76 027.560	2 981 618.680		R45	-78 954.610 2 984 805.720
L43	-75 959.320	2 981 565.800		R46	-78 777.680 2 984 608.970
L44	-75 909.810	2 981 533.630		R47	-78 458.340 2 984 253.700
L45	-75 854.220	2 981 502.870		R48	-78 100.650 2 983 856.550
L46	-75 787.940	2 981 471.380		R49	-77 800.600 2 983 522.390
L47	-75 716.970	2 981 446.420		R50	-77 526.150 2 983 217.200
L48	-75 680.840	2 981 435.500		R51	-77 429.270 2 983 109.470

Vel	12	Van	18	P771/09
Sheet		of		

PADRESERWE KOÖRDINATE / ROAD RESERVE CO-ORDINATES						
LINKERKANT/LEFT HAND SIDE				REGTERKANT/RIGHT HAND SIDE		
	Y	X	WG 29°		Y	X
L49	-75	566.690	2 981 408.700	R52	-77	132.550 2 982 779.530
L50	-75	119.150	2 981 306.340	R53	-76	774.930 2 982 381.720
L51	-75	078.460	2 981 297.040	R54	-76	751.840 2 982 356.040
L52	-74	602.990	2 981 187.290	R55	-76	439.240 2 982 008.390
L53	-74	586.000	2 981 183.370	R56	-76	202.940 2 981 745.550
L54	-74	093.970	2 981 069.660	R57	-76	140.470 2 981 676.060
L55	-74	050.360	2 981 059.720	R58	-76	098.560 2 981 632.160
L56	-73	615.310	2 980 960.620	R59	-76	055.490 2 981 593.330
L57	-73	124.010	2 980 847.550	R60	-75	978.520 2 981 533.120
L58	-73	029.020	2 980 825.770	R61	-75	926.060 2 981 499.440
L59	-72	989.640	2 980 815.350	R62	-75	871.620 2 981 469.100
L60	-72	929.150	2 980 796.060	R63	-75	727.940 2 981 410.220
L61	-72	870.720	2 980 771.910	R64	-75	668.110 2 981 393.510
L62	-72	814.930	2 980 742.880	R65	-75	578.770 2 981 372.830
L63	-72	762.390	2 980 710.480	R66	-75	163.370 2 981 277.070
L64	-72	720.700	2 980 678.480	R67	-75	132.980 2 981 267.610
L65	-72	659.820	2 980 627.230	R68	-75	050.200 2 981 241.840
L66	-72	575.690	2 980 546.110	R69	-74	835.900 2 981 202.380
L67	-72	349.080	2 980 328.820	R70	-74	614.880 2 981 151.240
L68	-72	210.150	2 980 195.600	R71	-74	596.240 2 981 146.930
L69	-71	849.050	2 979 848.940	R72	-74	110.100 2 981 035.470
L70	-71	491.860	2 979 504.690	R73	-74	061.150 2 981 024.170
L71	-71	243.300	2 979 265.720	R74	-73	618.170 2 980 922.600
L72	-71	127.030	2 979 153.940	R75	-73	128.260 2 980 809.990
L73	-70	915.330	2 978 952.460	R76	-73	034.500 2 980 788.240
L74	-70	821.020	2 978 850.070	R77	-72	996.160 2 980 778.500
L75	-70	766.600	2 978 770.400	R78	-72	939.850 2 980 759.780
L76	-70	723.330	2 978 686.420	R79	-72	885.000 2 980 736.730
L77	-70	691.700	2 978 601.260	R80	-72	832.260 2 980 709.390
L78	-70	664.770	2 978 478.860	R81	-72	781.770 2 980 677.820
L79	-70	658.570	2 978 417.890	R82	-72	738.000 2 980 645.020
L80	-70	658.290	2 978 323.530	R83	-72	689.570 2 980 603.610
L81	-70	666.040	2 978 078.520	R84	-72	606.880 2 980 524.480
L82	-70	669.490	2 977 971.160	R85	-72	240.290 2 980 172.200
L83	-70	682.550	2 977 564.350	R86	-71	874.950 2 979 821.960
L84	-70	697.360	2 977 110.250	R87	-71	516.830 2 979 478.070
L85	-70	713.300	2 976 612.300	R88	-71	254.970 2 979 226.450
L86	-70	715.270	2 976 547.560	R89	-71	154.210 2 979 129.630
L87	-70	717.500	2 976 474.330	R90	-71	021.260 2 979 001.730
L88	-70	717.340	2 976 407.440	R91	-70	919.150 2 978 903.260
L89	-70	712.670	2 976 346.640	R92	-70	850.600 2 978 826.900
L90	-70	705.710	2 976 294.240	R93	-70	800.330 2 978 753.350
L91	-70	685.060	2 976 204.620	R94	-70	759.490 2 978 674.340
L92	-70	607.450	2 975 965.880	R95	-70	727.870 2 978 589.560
L93	-70	449.850	2 975 491.760	R96	-70	715.570 2 978 537.580
L94	-70	295.150	2 975 024.310	R97	-70	702.050 2 978 473.770
L95	-70	138.480	2 974 550.080	R98	-70	696.400 2 978 415.620
L96	-70	023.630	2 974 204.700	R99	-70	696.130 2 978 326.180
L97	-69	980.660	2 974 075.470	R100	-70	703.200 2 978 097.020
L98	-69	823.550	2 973 601.260	R101	-70	703.750 2 978 079.270
L99	-69	768.860	2 973 436.410	R102	-70	705.940 2 978 011.910

Vel	13	Van	18	P771/09
Sheet		of		

PADRESERWE KOÖRDINATE / ROAD RESERVE CO-ORDINATES									
LINKERKANT/LEFT HAND SIDE					REGTERKANT/RIGHT HAND SIDE				
	Y	X	WG 29°		Y	X			
L100	-69 666.620	2 973	128.200	R103	-70 720.430	2 977	564.700		
L101	-69 509.280	2 972	653.720	R104	-70 734.840	2 977	113.100		
L102	-69 350.840	2 972	175.680	R105	-70 750.950	2 976	613.070		
L103	-69 341.140	2 972	146.730	R106	-70 753.040	2 976	547.690		
L104	-69 305.950	2 972	005.170	R107	-70 755.350	2 976	475.490		
L105	-69 296.020	2 971	878.970	R108	-70 755.000	2 976	406.200		
L106	-69 303.980	2 971	817.170	R109	-70 750.170	2 976	344.480		
L107	-69 305.120	2 971	807.370	R110	-70 741.700	2 976	282.650		
L108	-69 312.730	2 971	741.970	R111	-70 720.660	2 976	191.710		
L109	-69 372.110	2 971	233.730	R112	-70 642.560	2 975	953.760		
L110	-69 420.590	2 970	814.040	R113	-70 484.880	2 975	478.850		
L111	-69 423.940	2 970	754.550	R114	-70 330.680	2 975	012.290		
L112	-69 428.120	2 970	718.760	R115	-70 174.430	2 974	540.790		
L113	-69 445.510	2 970	569.930	R116	-70 059.340	2 974	193.720		
L114	-69 453.710	2 970	475.710	R117	-70 016.100	2 974	063.350		
L115	-69 453.330	2 970	392.850	R118	-69 859.200	2 973	590.390		
L116	-69 444.260	2 970	305.930	R119	-69 712.340	2 973	146.740		
L117	-69 426.910	2 970	251.010	R120	-69 702.070	2 973	115.730		
L118	-69 404.290	2 970	197.750	R121	-69 544.020	2 972	638.890		
L119	-69 376.870	2 970	147.060	R122	-69 385.660	2 972	160.930		
L120	-69 346.620	2 970	101.830	R123	-69 376.910	2 972	134.240		
L121	-69 303.100	2 970	050.620	R124	-69 340.610	2 971	999.550		
L122	-69 219.100	2 969	965.530	R125	-69 339.730	2 971	921.210		
L123	-68 487.800	2 969	241.270	R126	-69 339.250	2 971	877.630		
L124	-68 349.990	2 969	106.220	R127	-69 343.200	2 971	812.230		
L125	-68 019.770	2 968	779.200	R128	-69 351.980	2 971	733.620		
L126	-67 673.580	2 968	436.670	R129	-69 409.450	2 971	238.480		
L127	-67 311.470	2 968	078.300	R130	-69 461.630	2 970	789.590		
L128	-67 135.440	2 967	905.440	R131	-69 486.880	2 970	574.560		
L129	-67 044.880	2 967	820.290	R132	-69 495.400	2 970	444.080		
L130	-67 024.380	2 967	809.570	R133	-69 488.820	2 970	363.800		
L131	-66 930.250	2 967	728.840	R134	-69 484.700	2 970	326.870		
L132	-66 788.860	2 967	614.560	R135	-69 483.620	2 970	317.770		
L133	-66 780.810	2 967	600.360	R136	-69 461.800	2 970	236.120		
L134	-66 665.470	2 967	509.850	R137	-69 447.730	2 970	203.020		
L135	-66 265.270	2 967	196.770	R138	-69 437.450	2 970	179.700		
L136	-66 095.550	2 967	063.720	R139	-69 410.740	2 970	130.510		
L137	-65 872.080	2 966	888.530	R140	-69 379.170	2 970	083.720		
L138	-65 585.230	2 966	663.920	R141	-69 326.620	2 970	024.160		
L139	-65 477.470	2 966	579.540	R142	-69 268.990	2 969	962.140		
L140	-65 083.840	2 966	271.760	R143	-68 731.070	2 969	430.240		
L141	-64 822.960	2 966	067.610	R144	-68 514.980	2 969	216.580		
L142	-64 690.500	2 965	963.960	R145	-68 376.870	2 969	080.030		
L143	-64 311.820	2 965	667.660	R146	-68 076.950	2 968	783.060		
L144	-64 213.620	2 965	590.650	R147	-68 067.900	2 968	777.550		
L145	-63 264.860	2 964	848.240	R148	-68 041.060	2 968	752.480		
L146	-62 647.470	2 964	363.930	R149	-68 031.560	2 968	738.570		
L147	-62 596.470	2 964	313.100	R150	-67 700.330	2 968	410.300		
L148	-62 557.700	2 964	264.730	R151	-67 680.100	2 968	390.290		
L149	-62 522.110	2 964	211.540	R152	-67 376.310	2 968	089.860		
L150	-62 492.190	2 964	156.050	R153	-67 337.530	2 968	051.510		

Vel	14	Van	18	P771/09
Sheet		of		

PADRESERWE KOÖRDINATE / ROAD RESERVE CO-ORDINATES						
LINKERKANT/LEFT HAND SIDE				REGTERKANT/RIGHT HAND SIDE		
	Y	X	WG 29°		Y	X
L151	-62 467.150	2 964	146.150	R154	-67 186.230	2 967 901.070
L152	-62 458.010	2 964	120.630	R155	-67 042.580	2 967 765.770
L153	-62 440.540	2 963	978.620	R156	-67 036.580	2 967 771.880
L154	-62 424.300	2 963	860.570	R157	-66 943.750	2 967 689.150
L155	-62 354.730	2 963	364.960	R158	-66 875.390	2 967 637.420
L156	-62 285.210	2 962	869.580	R159	-66 880.950	2 967 630.840
L157	-62 263.580	2 962	713.210	R160	-66 688.790	2 967 480.390
L158	-62 216.780	2 962	374.970	R161	-66 294.880	2 967 172.240
L159	-62 171.270	2 962	050.170	R162	-66 101.100	2 967 020.510
L160	-62 147.340	2 961	879.440	R163	-65 893.790	2 966 858.170
L161	-62 078.050	2 961	384.780	R164	-65 662.860	2 966 677.430
L162	-62 041.230	2 961	120.000	R165	-65 499.390	2 966 549.480
L163	-62 020.310	2 960	969.520	R166	-65 104.930	2 966 240.660
L164	-61 969.590	2 960	672.050	R167	-64 823.820	2 966 020.690
L165	-61 967.480	2 960	661.620	R168	-64 711.940	2 965 933.140
L166	-61 940.650	2 960	507.050	R169	-64 333.930	2 965 637.230
L167	-61 900.400	2 960	279.930	R170	-63 940.710	2 965 329.730
L168	-61 842.790	2 959	993.300	R171	-63 816.310	2 965 231.300
L169	-61 823.770	2 959	898.030	R172	-63 416.460	2 964 919.270
L170	-61 764.910	2 959	603.160	R173	-63 255.970	2 964 793.350
L171	-61 712.700	2 959	343.440	R174	-63 016.960	2 964 605.850
L172	-61 710.140	2 959	322.740	R175	-62 667.060	2 964 329.660
L173	-61 533.170	2 959	037.230	R176	-62 604.690	2 964 264.080
L174	-61 370.680	2 957	892.220	R177	-62 570.880	2 964 217.880
L175	-61 221.330	2 957	644.490	R178	-62 540.920	2 964 167.520
L176	-61 198.880	2 957	607.090	R179	-62 518.690	2 964 122.910
L177	-61 141.680	2 957	493.100	R180	-62 496.910	2 964 059.980
L178	-61 130.600	2 957	471.740	R181	-62 486.210	2 964 016.860
L179	-61 082.060	2 957	367.960	R182	-62 478.250	2 963 974.390
L180	-61 032.930	2 957	262.420	R183	-62 464.380	2 963 879.050
L181	-61 000.140	2 957	179.060	R184	-62 392.180	2 963 364.040
L182	-60 972.880	2 957	084.250	R185	-62 322.410	2 962 866.280
L183	-60 954.670	2 956	989.230	R186	-62 296.140	2 962 676.750
L184	-60 909.960	2 956	725.510	R187	-62 253.780	2 962 371.130
L185	-60 873.760	2 956	512.670	R188	-62 209.500	2 962 052.610
L186	-60 861.860	2 956	453.100	R189	-62 184.960	2 961 876.080
L187	-60 845.700	2 956	386.010	R190	-62 115.800	2 961 380.410
L188	-60 832.490	2 956	337.390	R191	-62 066.200	2 961 026.830
L189	-60 762.530	2 956	123.500	R192	-62 055.470	2 960 944.920
L190	-60 743.030	2 956	063.880	R193	-62 052.440	2 960 924.080
L191	-60 608.920	2 955	657.050	R194	-62 023.380	2 960 741.150
L192	-60 590.180	2 955	600.210	R195	-62 001.290	2 960 621.430
L193	-60 434.410	2 955	125.730	R196	-61 964.370	2 960 424.420
L194	-60 361.870	2 954	905.450	R197	-61 878.940	2 959 984.740
L195	-60 307.540	2 954	740.500	R198	-61 860.280	2 959 891.590
L196	-60 268.050	2 954	631.650	R199	-61 808.750	2 959 634.280
L197	-60 235.930	2 954	563.120	R200	-61 753.230	2 959 375.390
L198	-60 226.470	2 954	546.600	R201	-61 743.240	2 959 324.500
L199	-60 202.450	2 954	504.660	R202	-61 726.200	2 959 312.790
L200	-59 928.420	2 954	086.250	R203	-61 615.250	2 959 133.790
L201	-59 655.070	2 953	668.580	R204	-61 602.110	2 959 104.740

Vel	15	Van	18	P771/09
Sheet		of		

PADRESERWE KOÖRDINATE / ROAD RESERVE CO-ORDINATES						
LINKERKANT/LEFT HAND SIDE			REGTERKANT/RIGHT HAND SIDE			
	Y	X	WG 29°		Y	X
L202	-59 383.940	2 953	256.470	R205	-61 607.550	2 959 024.120
L203	-59 091.740	2 952	812.450	R206	-61 403.320	2 957 871.990
L204	-59 034.570	2 952	725.310	R207	-61 254.890	2 957 626.410
L205	-58 860.440	2 952	459.910	R208	-61 232.480	2 957 587.960
L206	-58 812.230	2 952	386.440	R209	-61 179.530	2 957 484.980
L207	-58 661.160	2 952	157.190	R210	-61 162.860	2 957 450.080
L208	-58 554.900	2 951	980.880	R211	-61 118.160	2 957 356.330
L209	-58 530.970	2 951	936.570	R212	-61 066.450	2 957 245.220
L210	-58 372.980	2 951	650.260	R213	-61 041.820	2 957 181.830
L211	-58 066.350	2 951	092.880	R214	-61 024.890	2 957 129.840
L212	-58 018.860	2 951	013.150	R215	-61 009.750	2 957 077.100
L213	-57 952.480	2 950	909.860	R216	-60 986.940	2 956 954.680
L214	-57 781.170	2 950	656.670	R217	-60 950.890	2 956 740.700
L215	-57 666.080	2 950	486.570	R218	-60 910.580	2 956 505.580
L216	-57 384.940	2 950	070.990	R219	-60 898.980	2 956 446.350
L217	-57 029.870	2 949	547.000	R220	-60 884.860	2 956 385.560
L218	-56 951.980	2 949	422.760	R221	-60 867.890	2 956 325.900
L219	-56 902.930	2 949	333.750	R222	-60 778.540	2 956 050.610
L220	-56 744.540	2 949	019.360	R223	-60 765.280	2 956 009.830
L221	-56 694.400	2 948	919.830	R224	-60 736.950	2 955 922.750
L222	-56 495.930	2 948	524.950	R225	-60 727.070	2 955 895.660
L223	-56 449.930	2 948	433.430	R226	-60 648.240	2 955 656.580
L224	-56 302.540	2 948	140.260	R227	-60 630.360	2 955 602.360
L225	-56 224.880	2 947	985.780	R228	-60 469.980	2 955 113.090
L226	-56 128.190	2 947	793.350	R229	-60 398.870	2 954 897.590
L227	-56 001.150	2 947	540.490	R230	-60 389.290	2 954 868.530
L228	-55 905.960	2 947	351.550	R231	-60 343.920	2 954 731.040
L229	-55 892.200	2 947	320.700	R232	-60 263.150	2 954 533.870
L230	-55 662.260	2 946	869.480	R233	-60 256.630	2 954 521.980
L231	-55 450.450	2 946	451.600	R234	-60 232.850	2 954 478.610
L232	-55 216.830	2 945	990.440	R235	-59 961.820	2 954 067.380
L233	-54 992.960	2 945	547.500	R236	-59 685.500	2 953 646.200
L234	-54 903.560	2 945	371.360	R237	-59 431.980	2 953 262.330
L235	-54 880.250	2 945	325.410	R238	-59 407.010	2 953 224.520
L236	-54 755.790	2 945	080.170	R239	-59 110.120	2 952 772.360
L237	-54 530.620	2 944	635.430	R240	-58 882.950	2 952 427.060
L238	-54 487.290	2 944	549.920	R241	-58 842.440	2 952 365.480
L239	-54 431.990	2 944	440.770	R242	-58 691.520	2 952 135.260
L240	-54 393.220	2 944	364.250	R243	-58 628.390	2 952 035.930
L241	-54 304.130	2 944	188.420	R244	-58 590.210	2 951 967.580
L242	-54 161.320	2 943	905.770	R245	-58 566.010	2 951 913.300
L243	-54 078.720	2 943	742.300	R246	-58 400.000	2 951 606.130
L244	-53 839.560	2 943	270.410	R247	-58 102.430	2 951 080.780
L245	-53 758.220	2 943	107.850	R248	-58 051.040	2 950 993.870
L246	-53 739.120	2 943	068.980	R249	-57 985.180	2 950 891.100
L247	-53 658.590	2 942	873.440	R250	-57 827.110	2 950 656.950
L248	-53 588.840	2 942	698.460	R251	-56 994.820	2 949 416.860
L249	-53 466.920	2 942	380.960	R252	-56 928.180	2 949 299.430
L250	-53 344.090	2 942	060.320	R253	-56 786.110	2 949 017.830
L251	-53 232.840	2 941	770.220	R254	-56 715.410	2 948 877.690
L252	-53 194.150	2 941	669.340	R255	-56 540.240	2 948 529.430

Vel	16	Van	18	P771/09
Sheet		of		

PADRESERWE KOÖRDINATE / ROAD RESERVE CO-ORDINATES					
LINKERKANT/LEFT HAND SIDE			REGTERKANT/RIGHT HAND SIDE		
	Y	X	WG 29°	Y	X
L253	-53 165.500	2 941	594.650	R256	-56 481.880 2 948 413.420
L254	-52 999.750	2 941	161.940	R257	-56 346.320 2 948 143.930
L255	-52 930.840	2 940	989.570	R258	-56 258.420 2 947 969.190
L256	-52 909.080	2 940	951.630	R259	-56 171.700 2 947 796.670
L256X	-52 897.680	2 940	932.260	R260	-56 033.640 2 947 522.010
L257	-52 856.750	2 940	862.690	R261	-55 930.810 2 947 317.180
L258	-52 705.960	2 940	606.480	R262	-55 921.400 2 947 298.180
L259	-52 668.640	2 940	544.220	R263	-55 695.050 2 946 851.560
L260	-52 662.550	2 940	543.610	R264	-55 474.110 2 946 415.370
L261	-52 634.020	2 940	497.550	R265	-55 436.480 2 946 341.080
L262	-52 622.440	2 940	464.800	R266	-55 251.130 2 945 975.120
L263	-52 527.510	2 940	304.560	R267	-55 027.200 2 945 533.220
L264	-52 368.060	2 940	035.410	R268	-54 934.330 2 945 350.390
L265	-52 097.180	2 939	576.470	R269	-54 873.810 2 945 231.230
L266	-51 868.840	2 939	126.610	R270	-54 788.050 2 945 062.400
L267	-51 810.090	2 939	009.690	R271	-54 563.020 2 944 617.540
L268	-51 596.970	2 938	585.530	R272	-54 516.930 2 944 526.760
L269	-51 418.230	2 938	229.190	R273	-54 336.700 2 944 171.740
L270	-51 325.860	2 938	044.900	R274	-54 201.580 2 943 903.520
L271	-51 194.010	2 937	781.850	R275	-54 105.500 2 943 712.790
L272	-50 970.190	2 937	334.890	R276	-53 876.200 2 943 259.530
L273	-50 796.070	2 936	990.050	R277	-53 792.340 2 943 097.520
L274	-50 571.540	2 936	541.240	R278	-53 772.970 2 943 056.850
L275	-50 373.390	2 936	140.660	R279	-53 690.860 2 942 856.700
L276	-50 365.140	2 936	121.370	R280	-53 619.540 2 942 674.120
L277	-50 344.900	2 936	069.330	R281	-53 500.670 2 942 364.310
L278	-50 163.930	2 935	602.700	R282	-53 377.770 2 942 043.830
L279	-50 050.790	2 935	310.380	R283	-53 267.340 2 941 755.720
L280	-49 834.060	2 934	749.960	R284	-53 219.060 2 941 629.770
L281	-49 777.140	2 934	602.890	R285	-53 199.210 2 941 577.980
L282	-49 727.540	2 934	473.400	R286	-53 034.900 2 941 148.780
L283	-49 599.420	2 934	138.860	R287	-52 979.950 2 941 003.810
L284	-49 466.960	2 933	795.460	R288	-52 952.750 2 940 959.210
L285	-49 287.210	2 933	327.810	R289	-52 906.470 2 940 878.880
L286	-49 225.670	2 933	168.780	R290	-52 804.550 2 940 702.070
L287	-49 222.260	2 933	162.150	R291	-52 733.130 2 940 578.180
L288	-49 203.660	2 933	126.060	R292	-52 657.680 2 940 451.770
L289	-49 155.820	2 932	984.910	R293	-52 572.030 2 940 306.890
L290	-48 975.910	2 932	517.970	R294	-52 389.040 2 939 997.320
L291	-48 795.810	2 932	051.070	R295	-52 136.540 2 939 569.730
L292	-48 762.700	2 931	962.900	R296	-52 093.300 2 939 490.260
L293	-48 724.920	2 931	859.270	R297	-51 901.770 2 939 109.130
L294	-48 555.110	2 931	389.010	R298	-51 802.130 2 938 910.120
L295	-48 385.570	2 930	918.620	R299	-51 642.200 2 938 590.770
L296	-48 363.200	2 930	856.620	R300	-51 443.860 2 938 196.360
L297	-48 219.470	2 930	458.080	R301	-51 369.830 2 938 049.980
L298	-48 046.400	2 929	977.900	R302	-51 226.660 2 937 763.470
L299	-47 935.280	2 929	671.420	R303	-51 002.340 2 937 316.300
L300	-47 890.000	2 929	546.520	R304	-50 765.770 2 936 845.080
L301	-47 870.710	2 929	486.660	R305	-50 604.770 2 936 523.540
L302	-47 873.000	2 929	443.560	R306	-50 425.350 2 936 164.700

Vel	17	Van	18	P771/09
Sheet		of		

PADRESERWE KOÖRDINATE / ROAD RESERVE CO-ORDINATES					
LINKERKANT/LEFT HAND SIDE			REGTERKANT/RIGHT HAND SIDE		
	Y	X	WG 29°	Y	X
L303	-47 885.780	2 929 392.260		R307	-50 403.990 2 936 119.250
				R308	-49 876.780 2 934 753.670
				R309	-49 769.350 2 934 475.410
				R310	-49 246.530 2 933 121.200
				R311	-49 191.270 2 932 972.900
				R312	-49 011.520 2 932 505.890
				R313	-48 831.360 2 932 038.990
				R314	-48 798.170 2 931 950.800
				R315	-48 760.210 2 931 846.530
				R316	-48 590.370 2 931 376.250
				R317	-48 420.820 2 930 905.880
				R318	-48 405.100 2 930 862.270
				R319	-48 251.220 2 930 435.510
				R320	-48 081.700 2 929 965.140
				R321	-48 002.170 2 929 738.990
				R322	-47 946.560 2 929 590.610
				R323	-47 925.250 2 929 533.740
				R324	-47 908.520 2 929 481.740
				R325	-47 910.220 2 929 449.780
				R326	-47 922.060 2 929 412.250

Vel 18
Sheet

Van 18
of

P771/09