

# Government Gazette Staatskoerant

REPUBLIC OF SOUTH AFRICA  
REPUBLIEK VAN SUID-AFRIKA

Vol. 544

Pretoria, 25 October  
Oktober 2010

**No. 33649**

**IMPORTANT NOTICE**

The Government Printing Works will not be held responsible for faxed documents not received due to errors on the fax machine or faxes received which are unclear or incomplete. Please be advised that an "OK" slip, received from a fax machine, will not be accepted as proof that documents were received by the GPW for printing. If documents are faxed to the GPW it will be the sender's responsibility to phone and confirm that the documents were received in good order.

Furthermore the Government Printing Works will also not be held responsible for cancellations and amendments which have not been done on original documents received from clients.

**CONTENTS****INHOUD**

<i>No.</i>	<i>Page No.</i>	<i>Gazette No.</i>	<i>No.</i>	<i>Bladsy No.</i>	<i>Koerant No.</i>
<b>GOVERNMENT NOTICE</b>			<b>GOEWERMENSKENNISGEWING</b>		
<b>Transport, Department of</b>			<b>Vervoer, Departement van</b>		
<i>Government Notice</i>			<i>Goewermentskennisgewing</i>		
923		South African National Roads Agency Limited and the National Roads Act (7/1998): The South African National Roads Agency Limited: Declaration amendment of National Road P720: Amendment of Declaration No. 142 of 2008 .....	3	33649	
			923		Suid-Afrikaanse Nasionale Padagentskap Beperk en die Nasionale Paaie Wet (7/1998): Die Suid-Afrikaanse Nasionale Padagentskap Beperk: Verklaring wysiging van Nasionale Pad P720: Wysiging van Verklaring No. 142 van 2008 .....
				4	33649

---

## GOVERNMENT NOTICE

---

### DEPARTMENT OF TRANSPORT

No. 923

25 October 2010

## THE SOUTH AFRICAN NATIONAL ROADS AGENCY LIMITED

Registration No: 98/09584/06

---

### DECLARATION AMENDMENT OF NATIONAL ROAD P720

AMENDMENT OF DECLARATION NO. 142 OF 2008

By virtue of Section 40(1)(b) of the South African National Roads Agency Limited and National Roads Act, 1998 (Act No. 7 of 1998), I hereby amend Declaration No. 142 of 2008, by substituting sheets 1, 2, 3, 4 and 5 thereof with the subjoined sheets 1A, 2A, 3A, 4A and 5A of Plan No. P632/07 respectively.

[National Road P720: N2 – Golela (Swaziland Border)]

  
MINISTER OF TRANSPORT (Acting Minister)  
30/09/2010

---

## GOEWERMENTSKENNISGEWING

---

### DEPARTEMENT VAN VERVOER

No. 923

25 Oktober 2010

## DIE SUID-AFRIKAANSE NASIONALE PADAGENTSKAP BEPERK

Registrasie No: 98/09584/06


---

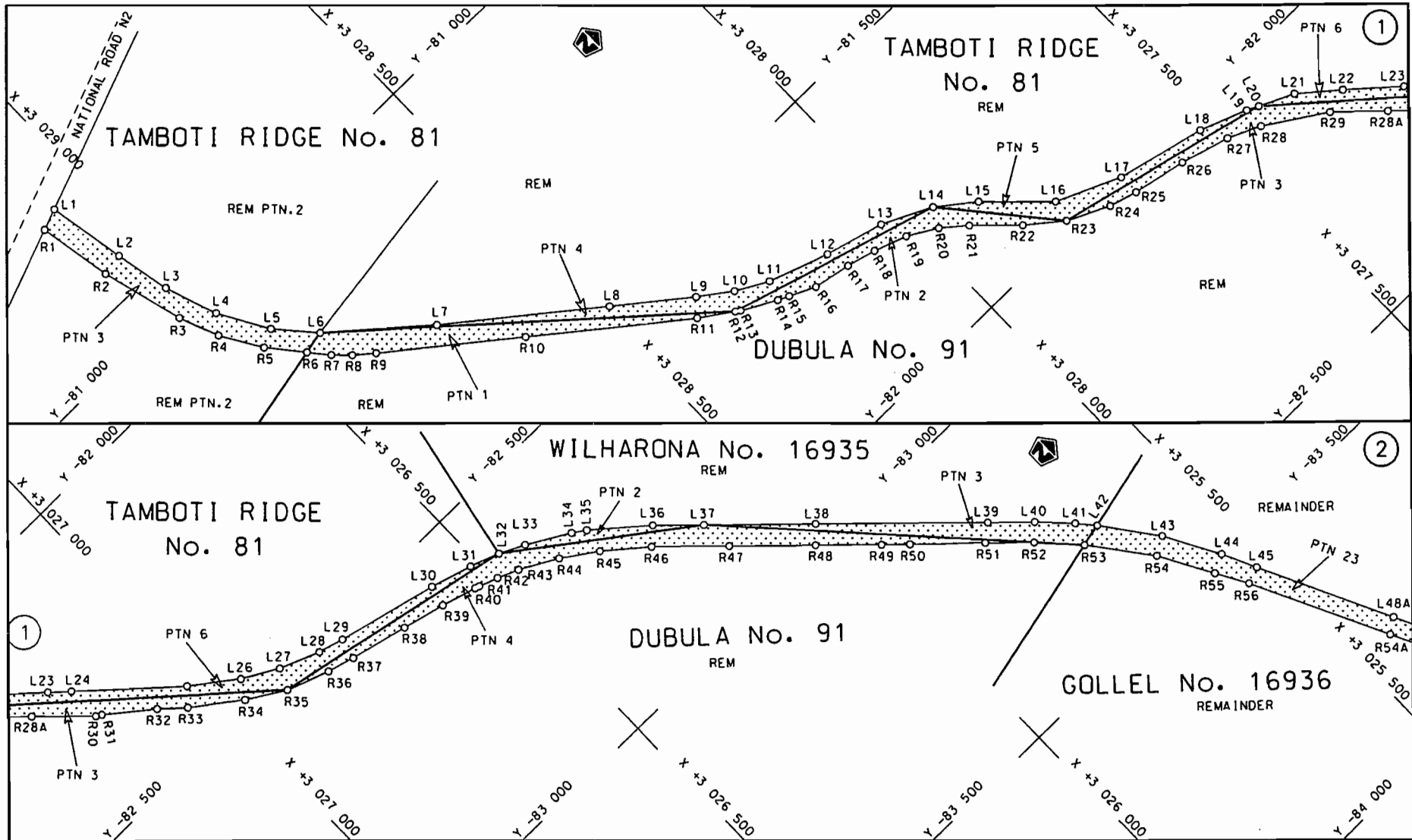
### VERKLARING WYSIGING VAN NASIONALE PAD P720


WYSIGING VAN VERKLARING NO. 142 VAN 2008.

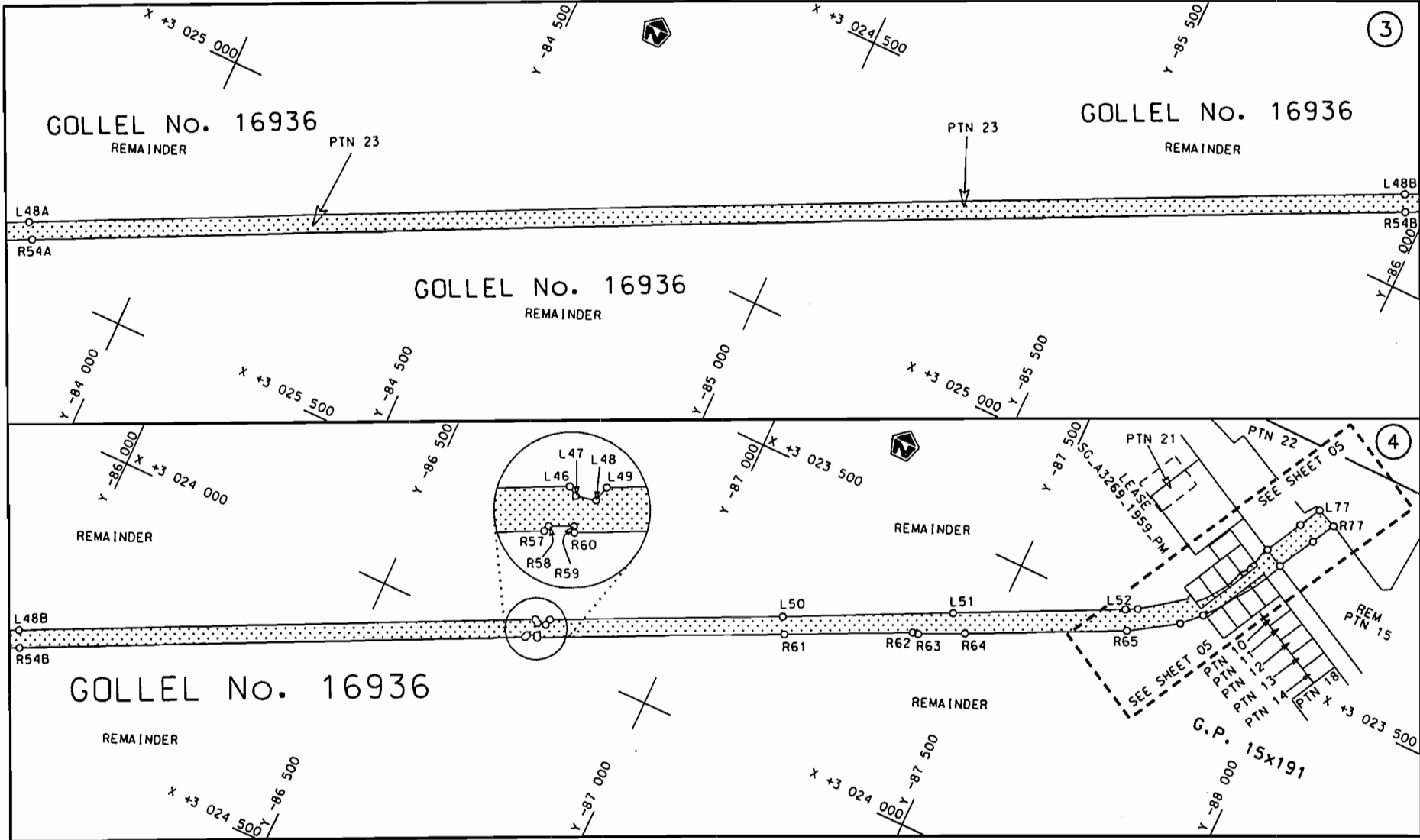
Kragtens Artikel 40(1)(b) van die Suid-Afrikaanse Nasionale Padagentskap Beperk en Nasionale Paaie Wet (Wet no. 7 van 1998), wysig ek hiermee Verklaring no. 142 van 2008, deur velle 1, 2, 3, 4, en 5 daarvan respektiewelik te vervang met meegaande velle 1A, 2A, 3A, 4A en 5A van Plan no. P632/07.

[Nasionale Pad P720: N2 – Golela (Swaziland Grens)]

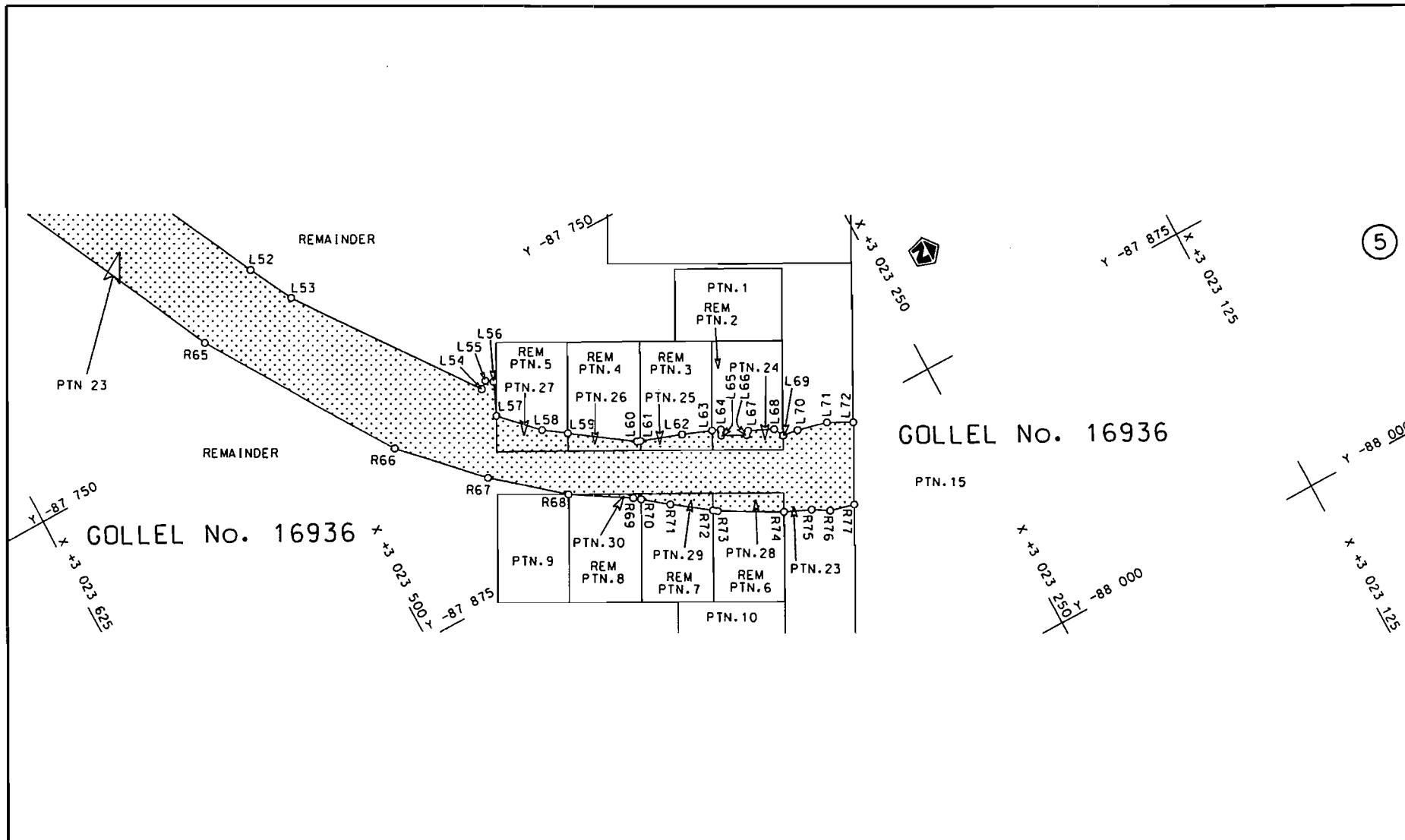
  
MINISTER VAN VERVOER (Acting Minister)  
30/09/2010



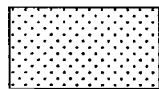
<p>Die Suid Afrikaanse Nasionale Padogentskaps Beperk The South African National Roads Agency Limited</p>	<p>Die figuur getoon The figure shown</p> 	<p>stel die padreserve voor van 'n gedeelte represents the road reserve of a portion van Nasionale Roete P720 Seksie of National Route P720 Section</p>	<p>Vel Sheet 1A van 5 Plan P632/07</p>
---	--	---	--



<p>Die Suid Afrikaanse Nasionale Padogentskap Beperk</p>	<p>Die figuur getoon</p>	<p>steldie padreserwe voor van 'n gedeelte</p>	<p>Vel Sheet 2A van 5</p>
<p>The South African National Roads Agency Limited</p>	<p>The figure shown</p>	<p>represents the road reserve of a portion of National Route P720</p>	<p>Seksie Section Plan P632/07</p>



STAATSKOERANT, 25 OKTOBER 2010

<p>Die Suid Afrikaanse Nasionale Padagentskap Beperk The South African National Roads Agency Limited</p>	<p>Die figuur getoon The figure shown</p> 	<p>steldie padreserwe voor van 'n gedeelte represents the road reserve of a portion van Nasionale Roete P720 Seksie of National Route Section</p>	<p>Vel Sheet 3A van of 5</p>
			<p>Plan P632/07</p>

No. 33649 7

PADRESERWE KOÖRDINATE				/	ROAD RESERVE CO-ORDINATES			
LINKERKANT/LEFT HAND SIDE					REGTERKANT/RIGHT HAND SIDE			
	Y	X	WG	31°	Y	X		
L1	-80 727.450	3 029 070.400			R1	-80 741.240	3 029 107.920	
L2	-80 866.520	3 029 044.320			R2	-80 872.070	3 029 083.380	
L3	-80 964.550	3 029 023.410			R3	-81 019.180	3 029 042.750	
L4	-81 058.360	3 028 990.450			R4	-81 089.030	3 029 014.370	
L5	-81 144.460	3 028 940.330			R5	-81 159.370	3 028 971.730	
L6	-81 210.110	3 028 882.210			R6	-81 217.980	3 028 922.760	
L7	-81 342.750	3 028 725.300			R7	-81 251.480	3 028 894.770	
L8	-81 529.720	3 028 484.850			R8	-81 277.390	3 028 868.350	
L9	-81 624.210	3 028 362.910			R9	-81 304.150	3 028 835.920	
L10	-81 663.490	3 028 307.030			R10	-81 465.910	3 028 627.790	
L11	-81 694.150	3 028 250.430			R11	-81 652.620	3 028 387.430	
L12	-81 731.530	3 028 144.240			R12	-81 690.400	3 028 331.080	
L13	-81 760.400	3 028 039.570			R13	-81 696.140	3 028 323.050	
L14	-81 802.640	3 027 951.810			R14	-81 728.000	3 028 263.120	
L15	-81 851.530	3 027 887.610			R15	-81 736.800	3 028 244.150	
L16	-81 946.080	3 027 789.740			R16	-81 757.840	3 028 198.650	
L17	-81 996.220	3 027 676.660			R17	-81 771.220	3 028 132.240	
L18	-82 035.990	3 027 517.200			R18	-81 785.370	3 028 080.210	
L19	-82 067.640	3 027 434.490			R19	-81 806.360	3 028 021.760	
L20	-82 077.520	3 027 414.140			R20	-81 835.930	3 027 970.260	
L21	-82 106.020	3 027 354.310			R21	-81 870.090	3 027 928.560	
L22	-82 161.150	3 027 288.070			R22	-81 935.480	3 027 860.210	
L23	-82 232.840	3 027 206.810			R23	-81 983.820	3 027 799.010	
L24	-82 261.000	3 027 175.020			R24	-82 018.950	3 027 725.760	
L25	-82 397.500	3 027 020.160			R25	-82 033.620	3 027 675.800	
L26	-82 454.300	3 026 944.060			R26	-82 054.480	3 027 579.590	
L27	-82 488.720	3 026 881.600			R27	-82 079.370	3 027 492.450	
L28	-82 516.590	3 026 810.640			R28	-82 105.310	3 027 436.130	
L29	-82 529.020	3 026 765.910			R29	-82 173.150	3 027 331.540	
L30	-82 571.370	3 026 588.330			R30	-82 322.080	3 027 173.650	
L31	-82 592.720	3 026 514.840			R31	-82 327.480	3 027 164.300	
L32	-82 610.770	3 026 463.550			R32	-82 389.320	3 027 085.990	
L33	-82 631.680	3 026 419.660			R33	-82 425.240	3 027 045.170	
L34	-82 672.780	3 026 346.720			R34	-82 486.000	3 026 964.210	
L35	-82 687.960	3 026 323.760			R35	-82 525.230	3 026 898.070	
L36	-82 762.660	3 026 233.920			R36	-82 552.110	3 026 822.330	
L37	-82 824.430	3 026 168.070			R37	-82 565.580	3 026 774.590	
L38	-82 958.730	3 026 024.990			R38	-82 589.700	3 026 672.520	
L39	-83 168.310	3 025 803.340			R39	-82 607.910	3 026 596.820	
L40	-83 224.570	3 025 743.230			R40	-82 625.570	3 026 535.390	
L41	-83 275.550	3 025 693.400			R41	-82 628.130	3 026 527.460	
L42	-83 305.400	3 025 667.970			R42	-82 639.770	3 026 494.920	
L43	-83 399.020	3 025 597.570			R43	-82 654.990	3 026 458.360	
L44	-83 494.810	3 025 543.940			R44	-82 690.010	3 026 393.160	
L45	-83 554.390	3 025 515.960			R45	-82 730.260	3 026 332.970	
L46	-86 766.280	3 023 946.040			R46	-82 788.330	3 026 261.290	
L47	-86 772.930	3 023 950.210			R47	-82 881.830	3 026 161.690	
L48	-86 787.040	3 023 947.120			R48	-82 985.610	3 026 050.990	
L49	-86 789.950	3 023 935.760			R49	-83 066.020	3 025 965.940	
L50	-87 157.370	3 023 759.100			R50	-83 100.750	3 025 928.920	
L51	-87 425.470	3 023 626.550			R51	-83 190.710	3 025 831.260	

Vel	4A	Van	5	P632/07
Sheet		of		



PADRESERWE KOÖRDINATE				/	ROAD RESERVE CO-ORDINATES			
LINKERKANT/LEFT HAND SIDE					REGTERKANT/RIGHT HAND SIDE			
	Y	X	WG	31°		Y	X	
L52	-87 696.870	3 023 492.110		R52	-83 249.660	3 025 768.730		
L53	-87 715.970	3 023 482.110		R53	-83 314.490	3 025 707.850		
L54	-87 790.430	3 023 427.220		R54	-83 417.080	3 025 628.580		
L55	-87 787.880	3 023 424.110		R55	-83 510.690	3 025 575.670		
L56	-87 789.980	3 023 421.110		R56	-83 564.680	3 025 545.140		
L57	-87 803.630	3 023 427.010		R57	-86 763.130	3 023 981.940		
L58	-87 818.580	3 023 412.110		R58	-86 764.600	3 023 977.390		
L59	-87 825.160	3 023 402.750		R59	-86 780.560	3 023 970.080		
L60	-87 842.470	3 023 378.110		R60	-86 782.810	3 023 974.070		
L61	-87 843.010	3 023 376.570		R61	-87 172.610	3 023 786.050		
L62	-87 849.080	3 023 359.110		R62	-87 375.420	3 023 688.160		
L63	-87 853.750	3 023 346.670		R63	-87 385.870	3 023 686.100		
L64	-87 855.140	3 023 342.970		R64	-87 459.340	3 023 650.080		
L65	-87 857.580	3 023 344.110		R65	-87 715.090	3 023 525.070		
L66	-87 862.880	3 023 334.010		R66	-87 795.200	3 023 473.110		
L67	-87 861.190	3 023 332.680		R67	-87 825.780	3 023 443.110		
L68	-87 866.080	3 023 322.110		R68	-87 848.840	3 023 415.150		
L69	-87 870.410	3 023 319.860		R69	-87 863.480	3 023 391.110		
L70	-87 871.280	3 023 313.110		R70	-87 865.590	3 023 388.390		
L71	-87 874.480	3 023 300.110		R71	-87 873.580	3 023 378.110		
L72	-87 879.870	3 023 289.820		R72	-87 884.630	3 023 362.830		
				R73	-87 885.880	3 023 361.110		
				R74	-87 899.910	3 023 335.310		
				R75	-87 904.780	3 023 324.110		
				R76	-87 909.080	3 023 317.110		
				R77	-87 911.590	3 023 306.400		