

Government Gazette Staatskoerant

REPUBLIC OF SOUTH AFRICA
REPUBLIEK VAN SUID-AFRIKA

Vol. 544

Pretoria, 26 October
Oktober 2010

No. 33670

IMPORTANT NOTICE

The Government Printing Works will not be held responsible for faxed documents not received due to errors on the fax machine or faxes received which are unclear or incomplete. Please be advised that an "OK" slip, received from a fax machine, will not be accepted as proof that documents were received by the GPW for printing. If documents are faxed to the GPW it will be the sender's responsibility to phone and confirm that the documents were received in good order.

Furthermore the Government Printing Works will also not be held responsible for cancellations and amendments which have not been done on original documents received from clients.

CONTENTS**INHOUD**

<i>No.</i>	<i>Page No.</i>	<i>Gazette No.</i>	<i>No.</i>	<i>Bladsy No.</i>	<i>Koerant No.</i>
GOVERNMENT NOTICE			GOEWERMENSKENNISGEWING		
Transport, Department of			Vervoer, Departement van		
<i>Government Notice</i>			<i>Goewermentskennisgewing</i>		
953			953		
South African National Roads Agency Limited and the National Roads Act (7/1998): The South African National Roads Agency Limited: Declaration amendment of National Road R22 Section 1: Amendment of Declaration No. 1350 of 2003	3	33670	Suid-Afrikaanse Nasionale Padagentskap Beperk en die Nasionale Paaie Wet (7/1998): Die Suid-Afrikaanse Nasionale Padagentskap Beperk: Verklaring wysiging van Nasionale Pad R22 Seksie 1: Wysiging van Verklaring No. 1350 van 2003	4	33670

GOVERNMENT NOTICE

DEPARTMENT OF TRANSPORT

No. 953

26 October 2010

THE SOUTH AFRICAN NATIONAL ROADS AGENCY LIMITED

Registration No: 98/09584/06

DECLARATION AMENDMENT OF NATIONAL ROAD R22 SECTION 1

AMENDMENT OF DECLARATION NO. 1350 OF 2003

By virtue of section 40(1)(b) of the South African National Roads Agency Limited and the National Roads Act, 1998 (Act No. 7 of 1998), I hereby amend Declaration No. 1350 of 2003 by substituting the descriptive section from the junction with the N2/30 up to the common boundary between Lot H108 and Lot H109, with the subjoined sheets 1 to 6 of Plan No. P723/08.

(National Road R22 Section 1: N2/30 – Common boundary between Lot H108 and Lot H109)


MINISTER OF TRANSPORT

GOEWERMENSKENNISGEWING

DEPARTEMENT VAN VERVOER

No. 953

26 Oktober 2010

DIE SUID-AFRIKAANSE NASIONALE PADAGENTSKAP BEPERK

Registrasie No: 98/09584/06

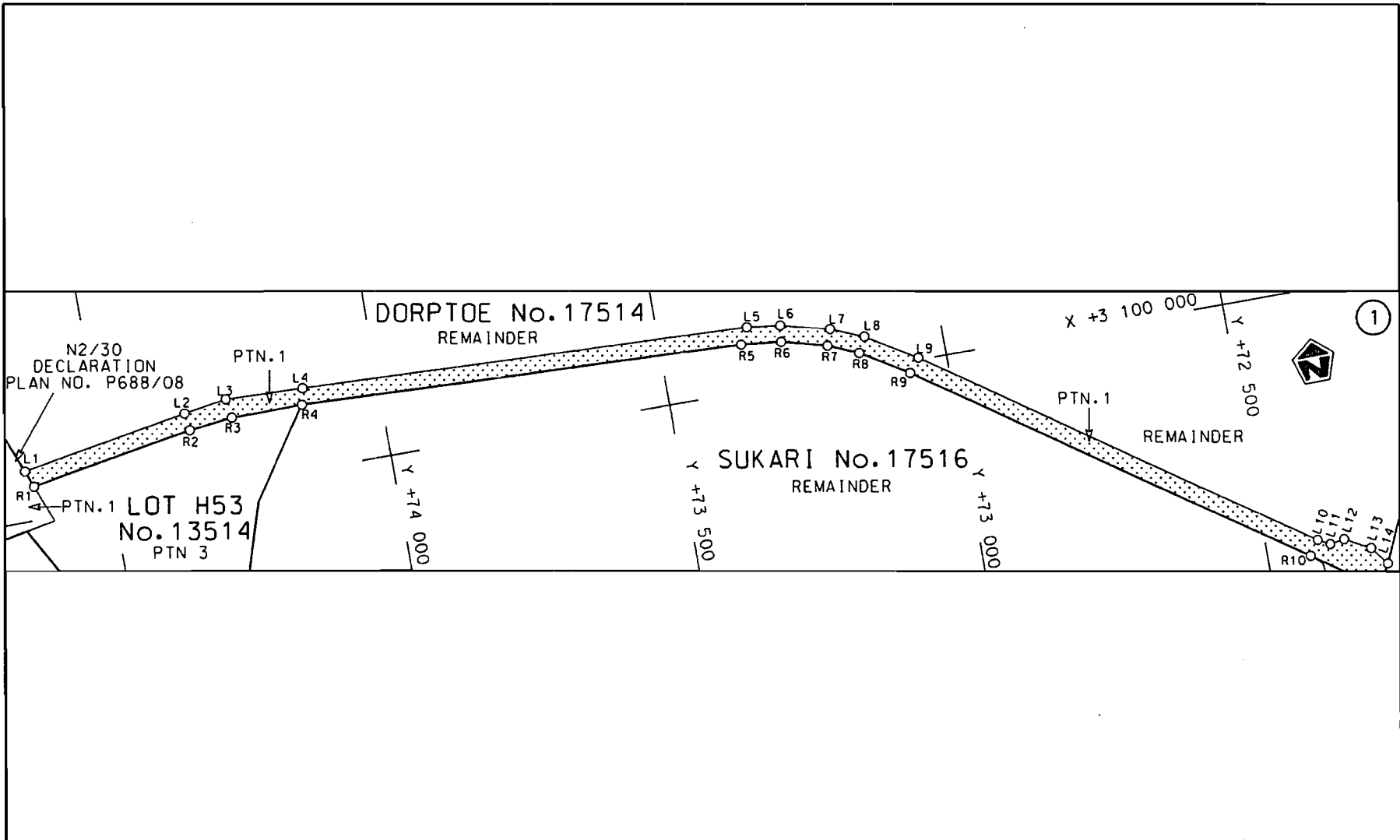
VERKLARING WYSIGING VAN NASIONALE PAD R22 SEKSIE 1.

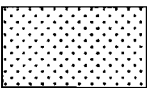
WYSIGING VAN VERKLARING NO. 1350 VAN 2003

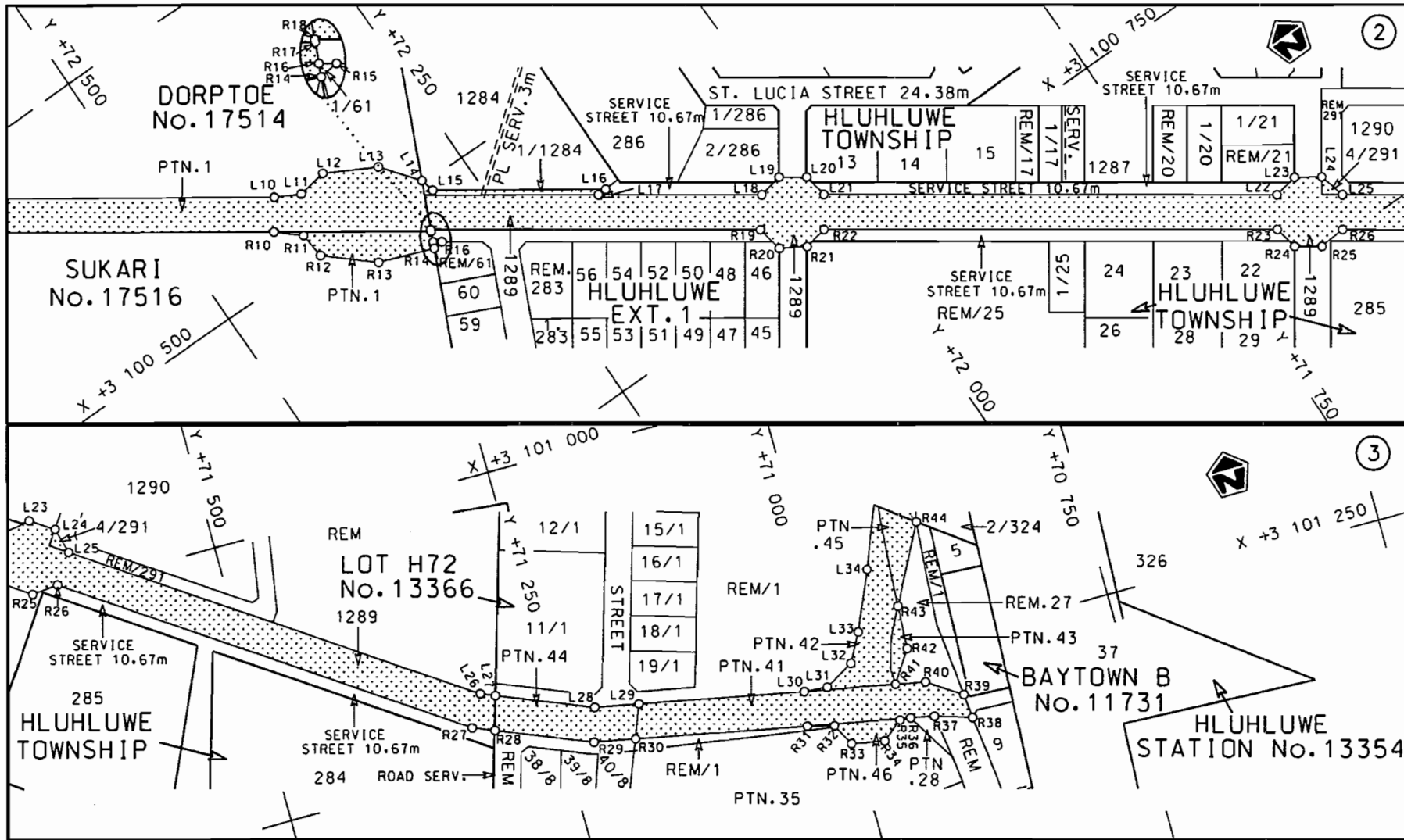
Kragtens Artikel 40(1)(b) van die Suid Afrikaanse Nasionale Padagentskap Beperk en die Nasionale Paaie Wet, 1998 (Wet No.7 van 1998), wysig ek hiermee Verklaring no. 1350 van 2003, deur die beskrywende gedeelte vanaf die aansluiting met die N2/30 tot by die gemeenskaplike grens tussen Lot H108 en Lot H109, te vervang met meegaande velle 1 tot 6 van Plan no. P723/08


(Nasionale Pad R22 Seksie 1: N2/30 – Gemeenskaplike grens tussen Lot H108 en Lot H109)

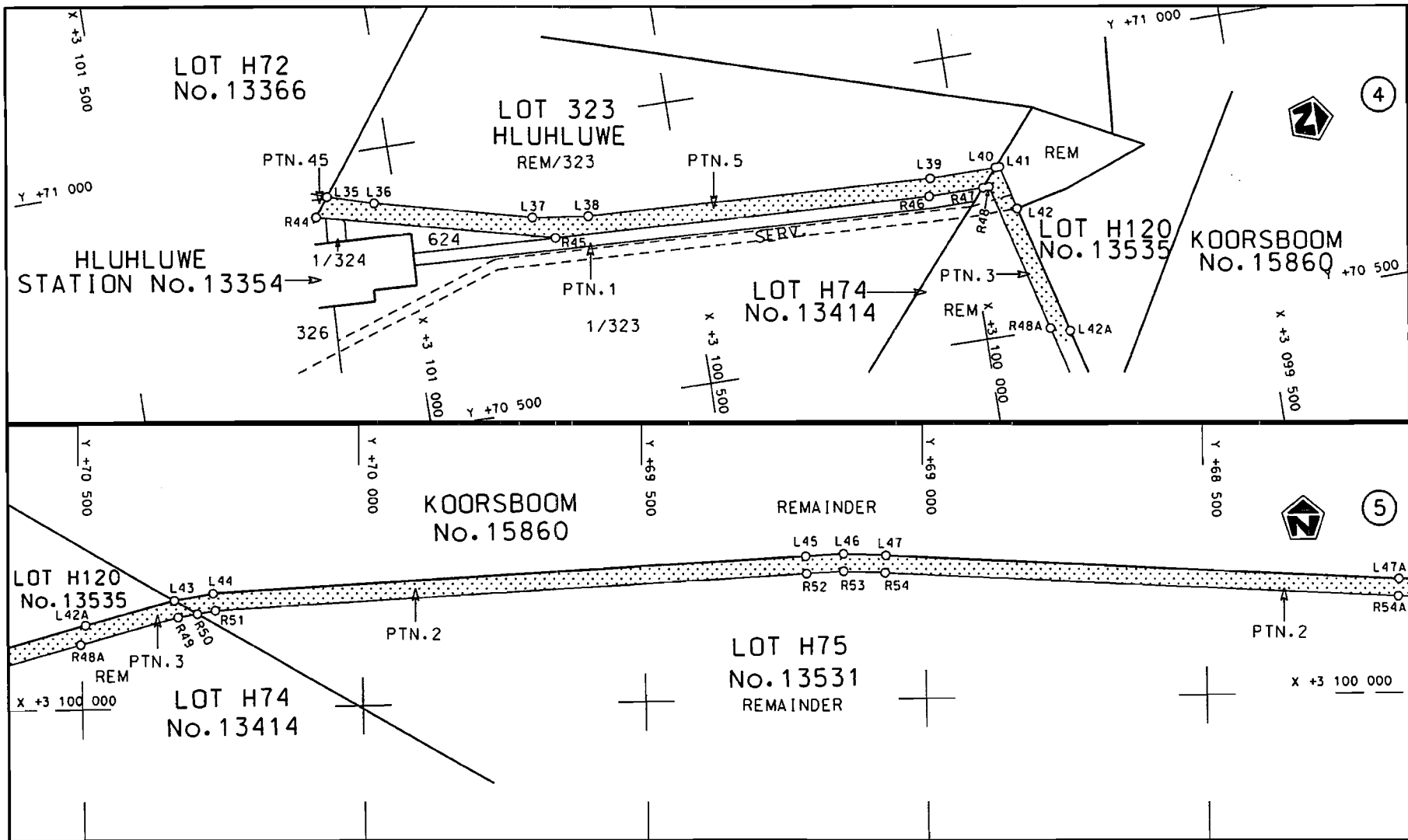

MINISTER VAN VERVOER



<p>Suid-Afrikaanse Padraad South African Roads Board</p>	<p>Die figuur getoon The figure shown</p>	<p></p> <p>steldie padreserwe voor van 'n gedeelte represents the road reserve of a portion van Nasionale Roete of National Route R22 Seksie Section 1</p>	<p>Vel 1 van 6 Sheet of</p> <p>PLAN P723/08</p>
--	---	--	---

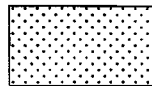


<p>Suid-Afrikaanse Padrood South African Roads Board</p>	<p>Die figuur getoon The figure shown</p> 	<p>steldie padreserwe voor van 'n gedeelte represents the road reserve of a portion van Nasionale Roete R22 of National Route R22</p> <p>Seksie 1 Section 1</p>	<p>Vel 2 van 6 Sheet 2 of 6</p> <p>PLAN P723/08</p>
--	--	---	---



Suid-Afrikaanse Padraad
South African Roads Board

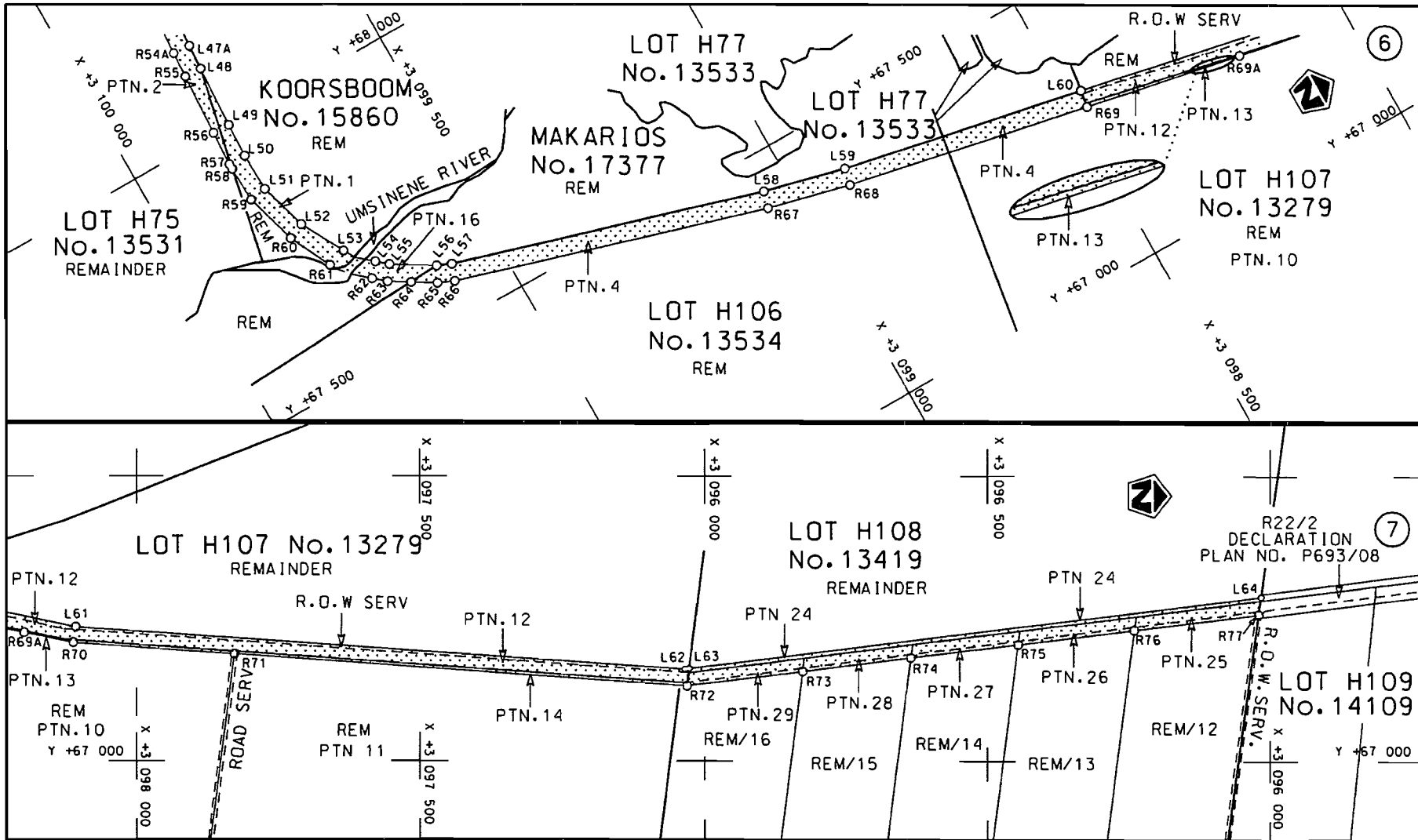
Die figuur getoon
The figure shown

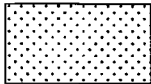


steldie padreserwe voor van 'n gedeelte
represents the road reserve of a portion
van Nasionale Roete
of National Route R22

Seksie
Section 1

Vel
Sheet 3 van 6
of
PLAN P723/08



<p>Suid-Afrikaanse Padraad South African Roads Board</p>	<p>Die figuur getoon The figure shown</p> 	<p>steldie padreserwe voor van 'n gedeelte represents the road reserve of a portion van Nasionale Roete R22 Seksie of National Route R22 Section 1</p>	<p>Vel 4 van 6 Sheet of 6 PLAN P723/08</p>
--	--	--	--

PADRESERWE KOÖRDINATE				/	ROAD RESERVE CO-ORDINATES						
LINKERKANT/LEFT HAND SIDE					REGTERKANT/RIGHT HAND SIDE						
	Y	X	WG	33°	Y	X					
L1	74	645.600	3	099	911.650	R1	74	634.120	3	099	940.580
L2	74	348.160	3	099	862.930	R2	74	344.130	3	099	893.220
L3	74	271.140	3	099	851.850	R3	74	266.210	3	099	885.200
L4	74	131.260	3	099	857.110	R4	74	137.970	3	099	885.560
L5	73	341.670	3	099	889.670	R5	73	356.650	3	099	917.870
L6	73	281.870	3	099	897.620	R6	73	285.470	3	099	925.900
L7	73	195.190	3	099	919.540	R7	73	204.630	3	099	947.340
L8	73	136.970	3	099	943.170	R8	73	150.890	3	099	969.880
L9	73	049.890	3	099	996.390	R9	73	068.590	3	100	020.240
L10	72	406.720	3	100	434.680	R10	72	423.890	3	100	459.860
L11	72	385.450	3	100	445.960	R11	72	404.390	3	100	476.920
L12	72	359.270	3	100	441.690	R12	72	402.130	3	100	499.950
L13	72	314.590	3	100	465.350	R13	72	362.310	3	100	534.590
L14	72	290.270	3	100	496.940	R14	72	315.400	3	100	551.860
L15	72	287.450	3	100	509.200	R15	72	306.440	3	100	551.010
L16	72	161.320	3	100	595.010	R16	72	312.960	3	100	546.530
L17	72	169.420	3	100	595.310	R17	72	309.110	3	100	538.120
L18	72	050.540	3	100	677.110	R18	72	308.450	3	100	536.680
L19	72	029.190	3	100	673.190	R19	72	068.970	3	100	701.440
L20	72	009.140	3	100	686.990	R20	72	064.660	3	100	724.760
L21	72	005.230	3	100	708.280	R21	72	043.720	3	100	737.270
L22	71	673.930	3	100	936.230	R22	72	022.600	3	100	733.350
L23	71	652.470	3	100	932.290	R23	71	691.030	3	100	961.480
L24	71	632.190	3	100	945.870	R24	71	687.110	3	100	982.540
L25	71	625.880	3	100	969.120	R25	71	666.950	3	100	996.410
L26	71	308.920	3	101	187.130	R26	71	643.240	3	100	994.350
L27	71	296.150	3	101	192.310	R27	71	323.830	3	101	214.050
L28	71	214.780	3	101	225.290	R28	71	305.050	3	101	221.660
L29	71	175.880	3	101	233.000	R29	71	223.620	3	101	254.660
L30	71	032.280	3	101	261.080	R30	71	187.280	3	101	261.760
L31	71	011.770	3	101	262.870	R31	71	038.090	3	101	291.000
L32	70	985.560	3	101	248.220	R32	71	014.580	3	101	297.280
L33	70	971.780	3	101	223.520	R33	71	004.110	3	101	316.630
L34	70	949.190	3	101	172.280	R34	70	974.640	3	101	322.280
L35	70	927.930	3	101	118.430	R35	70	956.690	3	101	308.320
L36	70	904.080	3	101	037.820	R36	70	947.200	3	101	308.810
L37	70	836.600	3	100	765.840	R37	70	926.280	3	101	312.920
L38	70	823.510	3	100	668.010	R38	70	894.260	3	101	323.010
L39	70	795.970	3	100	054.820	R39	70	896.320	3	101	301.650
L40	70	797.160	3	099	937.080	R40	70	925.820	3	101	281.950
L41	70	797.230	3	099	930.050	R41	70	952.060	3	101	276.800
L42	70	719.330	3	099	910.490	R42	70	933.560	3	101	249.350
L43	70	332.800	3	099	810.320	R43	70	931.350	3	101	210.780
L44	70	263.170	3	099	798.890	R44	70	895.590	3	101	142.810
L45	69	212.400	3	099	747.240	R45	70	794.920	3	100	731.540
L46	69	144.350	3	099	744.150	R46	70	764.840	3	100	061.740
L47	69	068.430	3	099	748.040	R47	70	765.270	3	099	964.810
L48	68	109.720	3	099	802.650	R48	70	765.320	3	099	953.890
L49	67	999.610	3	099	807.700	R49	70	326.490	3	099	840.170
L50	67	939.610	3	099	810.120	R50	70	291.740	3	099	834.470
L51	67	871.050	3	099	808.690	R51	70	259.940	3	099	829.240

Vel	5	Van	6	P723/08
Sheet		of		

PADRESERWE KOÖRDINATE				/ ROAD RESERVE CO-ORDINATES			
LINKERKANT/LEFT HAND SIDE				REGTERKANT/RIGHT HAND SIDE			
WG 33°				Y		X	
L52	67	785.910	3 099 783.990	R52	69	210.960	3 099 777.680
L53	67	709.690	3 099 742.110	R53	69	144.440	3 099 774.660
L54	67	665.060	3 099 701.750	R54	69	070.080	3 099 778.480
L55	67	648.420	3 099 682.500	R55	68	111.290	3 099 833.090
L56	67	605.470	3 099 611.930	R56	68	000.920	3 099 838.150
L57	67	595.030	3 099 587.310	R57	67	939.900	3 099 840.610
L58	67	433.960	3 099 048.210	R58	67	929.720	3 099 840.400
L59	67	398.530	3 098 903.850	R59	67	866.400	3 099 839.080
L60	67	310.700	3 098 473.110	R60	67	774.180	3 099 812.320
L61	67	235.390	3 098 106.980	R61	67	699.420	3 099 775.180
L62	67	161.450	3 097 034.800	R62	67	642.000	3 099 721.690
L63	67	162.400	3 097 027.210	R63	67	623.700	3 099 700.520
L64	67	288.780	3 096 015.520	R64	67	602.430	3 099 665.570
				R65	67	578.270	3 099 625.880
				R66	67	566.300	3 099 597.660
				R67	67	404.550	3 099 056.190
				R68	67	368.780	3 098 910.510
				R69	67	280.560	3 098 477.770
				R70	67	208.260	3 098 111.510
				R71	67	188.010	3 097 825.650
				R72	67	131.750	3 097 031.140
				R73	67	157.180	3 096 827.210
				R74	67	181.110	3 096 635.330
				R75	67	204.780	3 096 445.470
				R76	67	230.320	3 096 240.710
				R77	67	257.860	3 096 019.810

Vel 6 Van 6
Sheet of

P723/08