

Government Gazette Staatskoerant

REPUBLIC OF SOUTH AFRICA
REPUBLIEK VAN SUID-AFRIKA

Vol. 544

Pretoria, 26 October 2010
Oktober

No. 33673

IMPORTANT NOTICE

The Government Printing Works will not be held responsible for faxed documents not received due to errors on the fax machine or faxes received which are unclear or incomplete. Please be advised that an "OK" slip, received from a fax machine, will not be accepted as proof that documents were received by the GPW for printing. If documents are faxed to the GPW it will be the sender's responsibility to phone and confirm that the documents were received in good order.

Furthermore the Government Printing Works will also not be held responsible for cancellations and amendments which have not been done on original documents received from clients.

CONTENTS**INHOUD**

No.	Page No.	Gazette No.	No.	Bladsy No.	Koerant No.
GOVERNMENT NOTICE			GOEWERMENTSKENNISGEWING		
Transport, Department of			Vervoer, Departement van		
<i>Government Notice</i>			<i>Goewermentskennisgewing</i>		
956			956		
South African National Roads Agency Limited and the National Roads Act (7/1998): The South African National Roads Agency Limited: Declaration amendment of National Road R27 Section 11: Amendment of Declaration No. 285 of 2006			Suid-Afrikaanse Nasionale Padagentskap Beperk en die Nasionale Paaie Wet (7/1998): Die Suid-Afrikaanse Nasionale Padagentskap Beperk: Verklaring wysiging van Nasionale Pad R27 Seksie 11: Wysiging van Verklaring No. 285 van 2006		
	3	33673		4	33673

GOVERNMENT NOTICE

DEPARTMENT OF TRANSPORT

No. 956

26 October 2010

THE SOUTH AFRICAN NATIONAL ROADS AGENCY LIMITED

Registration No: 98/09584/06

DECLARATION AMENDMENT OF NATIONAL ROAD R27 SECTION 11

AMENDMENT OF DECLARATION No. 285 OF 2006

By virtue of section 40(1)(b) of the South African National Roads Agency Limited and the National Roads Act, 1998 (Act No. 7 of 1998), I hereby amend Declaration No. 285 of 2006, by substituting the descriptive section of the route from Kenhardt up to Keimoes, with the subjoined sheets 1 to 18 of Plan No. P766/09.

(National Road R27 Section 11: Kenhardt – Keimoes)


MINISTER OF TRANSPORT

GOEWERMENSKENNISGEWING

DEPARTEMENT VAN VERVOER

No. 956

26 Oktober 2010

DIE SUID-AFRIKAANSE NASIONALE PADAGENTSKAP BEPERK

Registrasie No: 98/09584/06

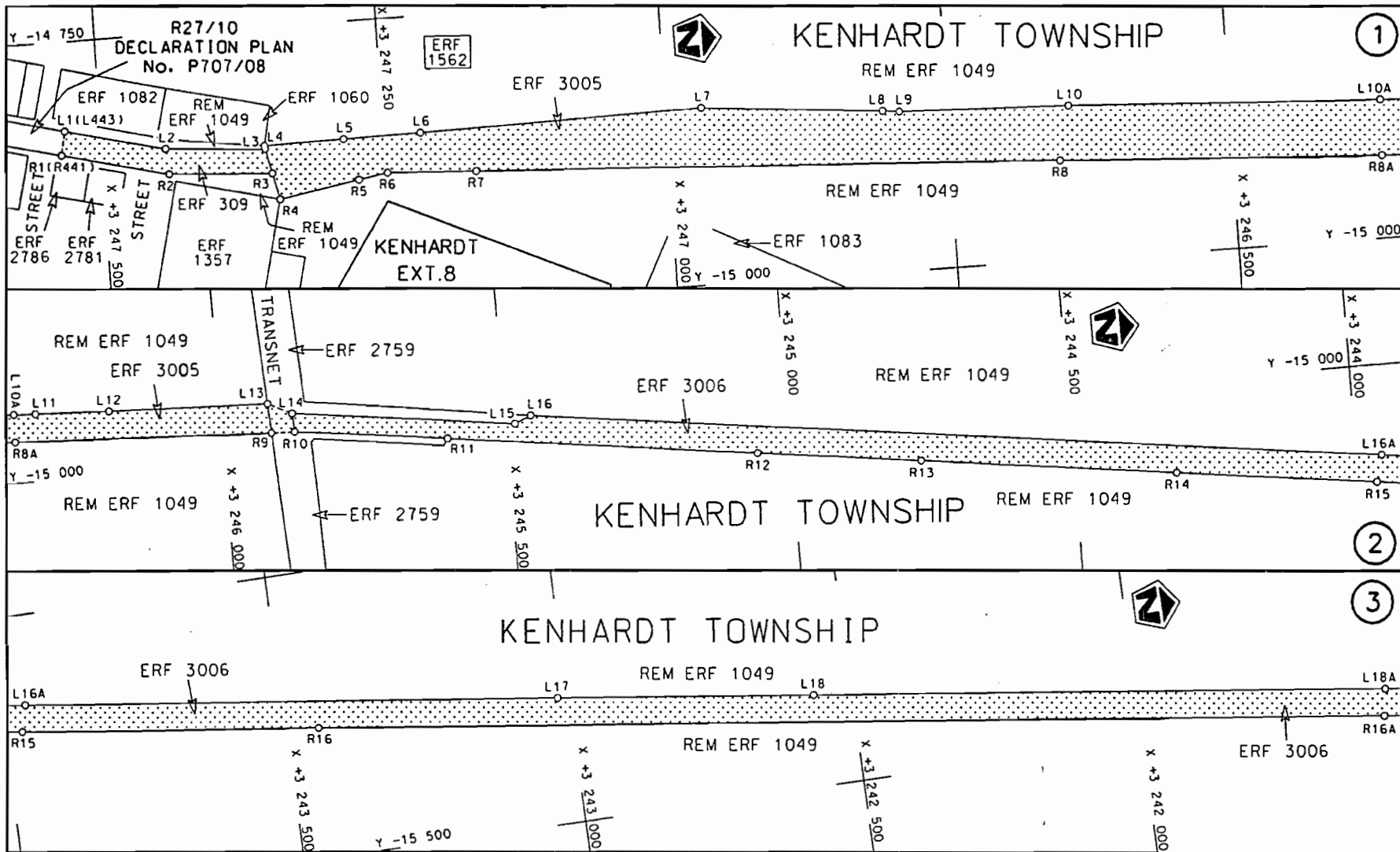
VERKLARING WYSIGING VAN NASIONALE PAD R27 SEKSIE 11

WYSIGING VAN VERKLARING NO. 285 VAN 2006

Kragtens Artikel 40(1)(b) van die Suid-Afrikaanse Nasionale Padagentskap Beperk en die Nasionale Paaie Wet, 1998 (Wet no. 7 van 1998), wysig ek hiermee Verklaring no. 285 van 2006, deur die beskrywende gedeelte van die roete vanaf Kenhardt tot by Keimoes, te vervang met meegaande velle 1 tot 18 van Plan no. P766/09.

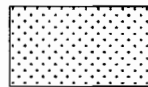
(Nasionale Pad R27 Seksie 11: Kenhardt – Keimoes)


MINISTER VAN VERVOER (Acting Minister)



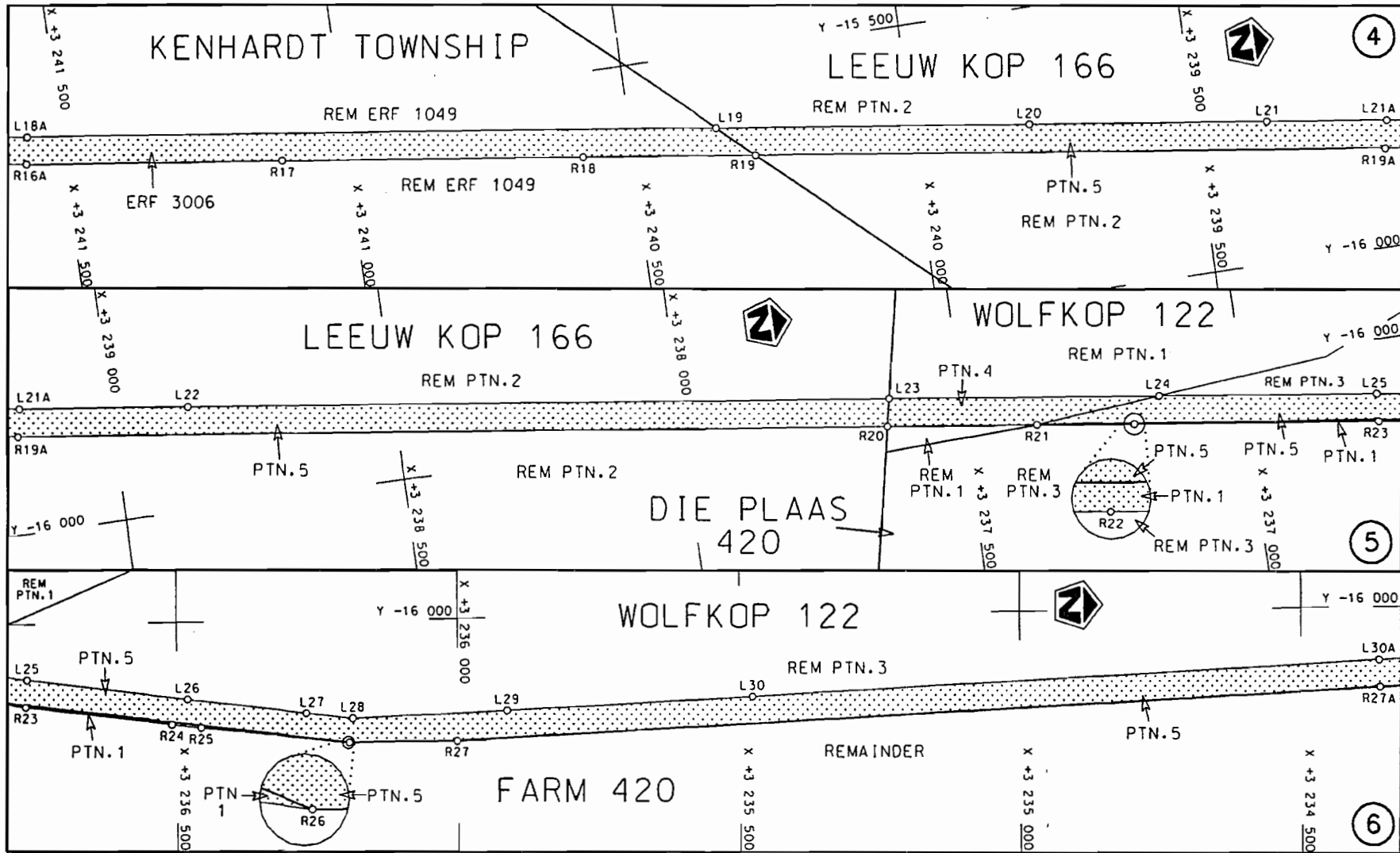
Die Suid Afrikaanse Nasionale Podogentskop Beperk
The South African National Roads Agency Limited


Die figuur getoon
The figure shown

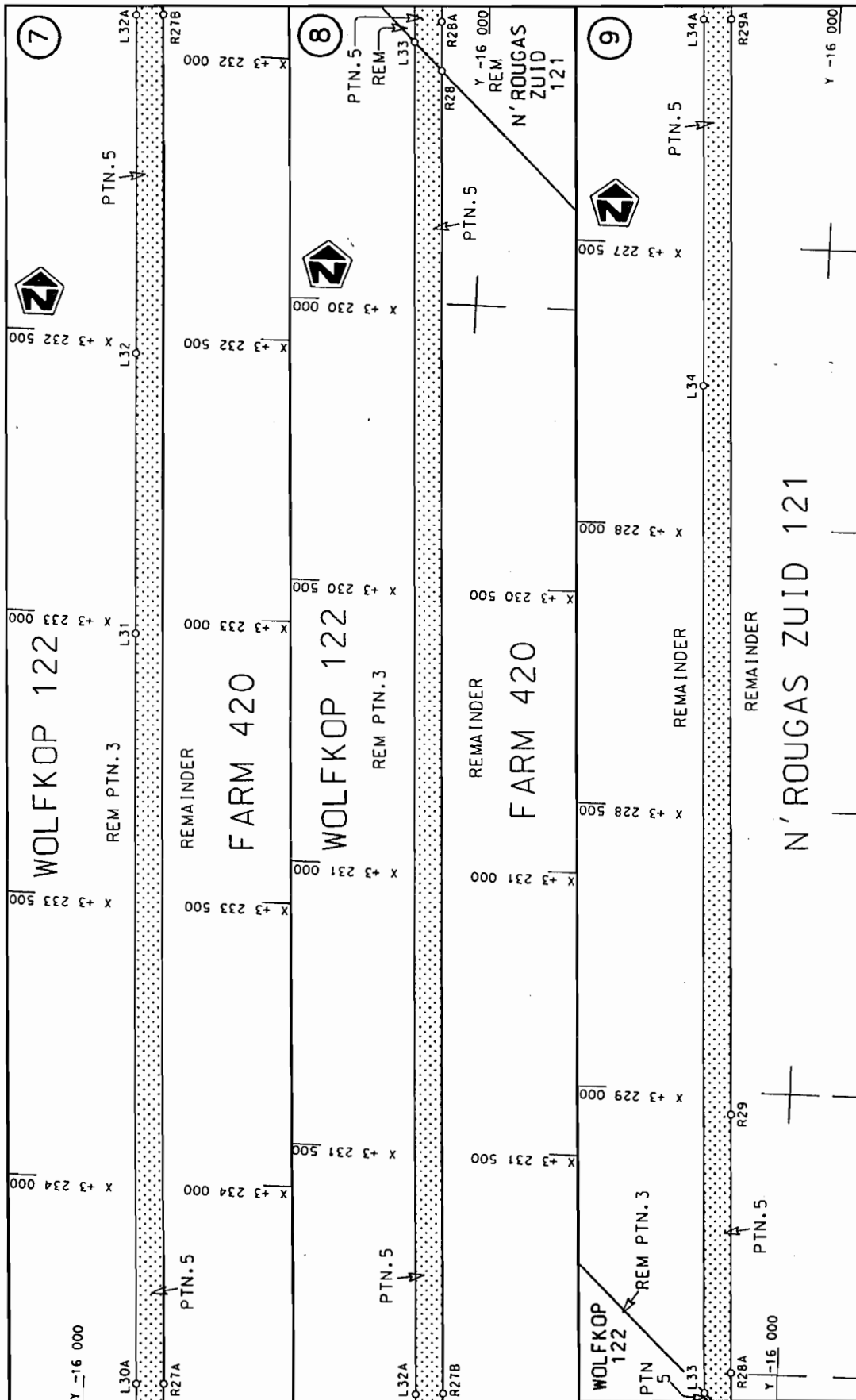


st die padreserwe voor van 'n gedeelte
represents the road reserve of a portion
van Nasionale Roete R27 Seksie Section
of National Route 11

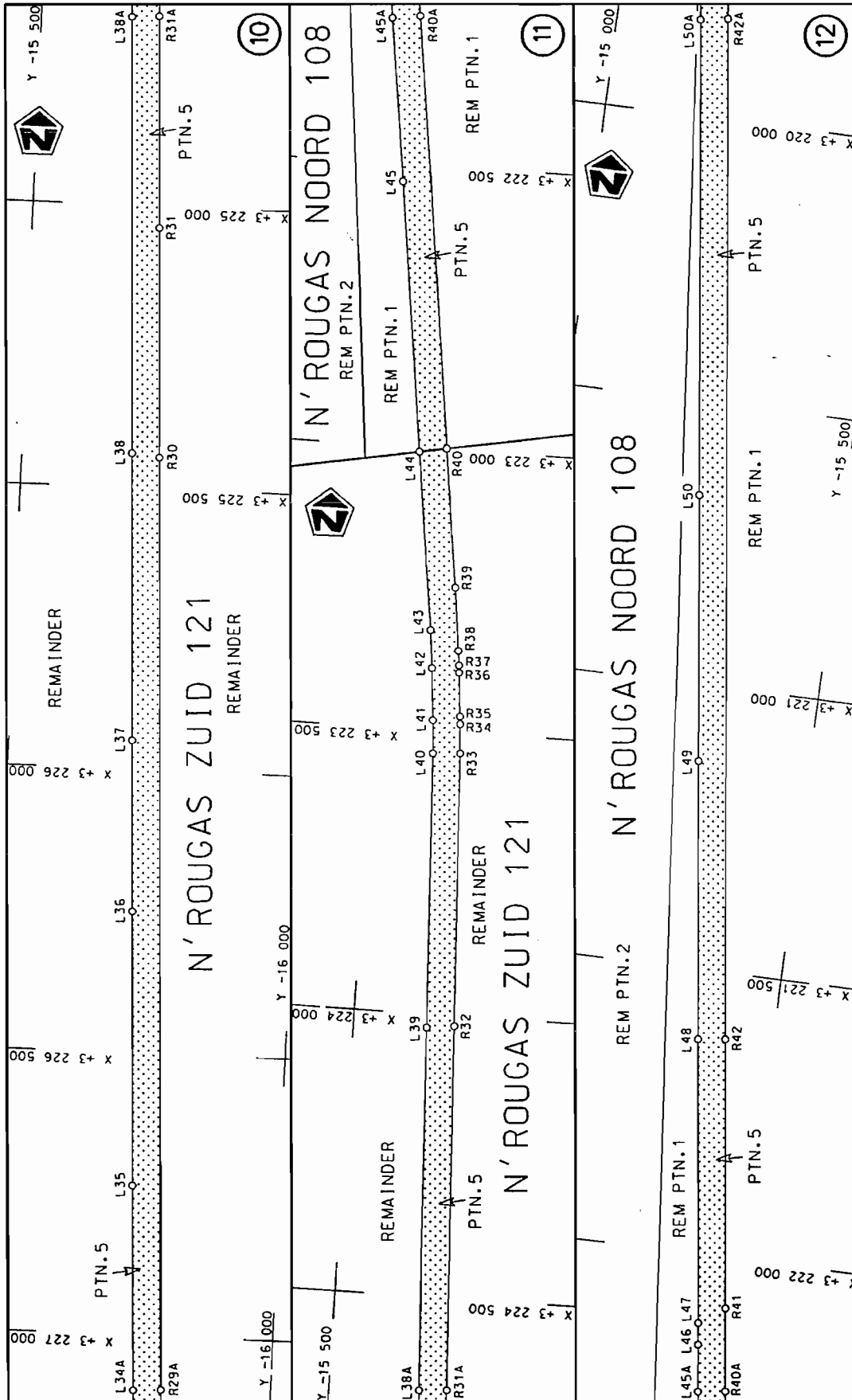
Vel Sheet 1 van of 18
Plan P766/09



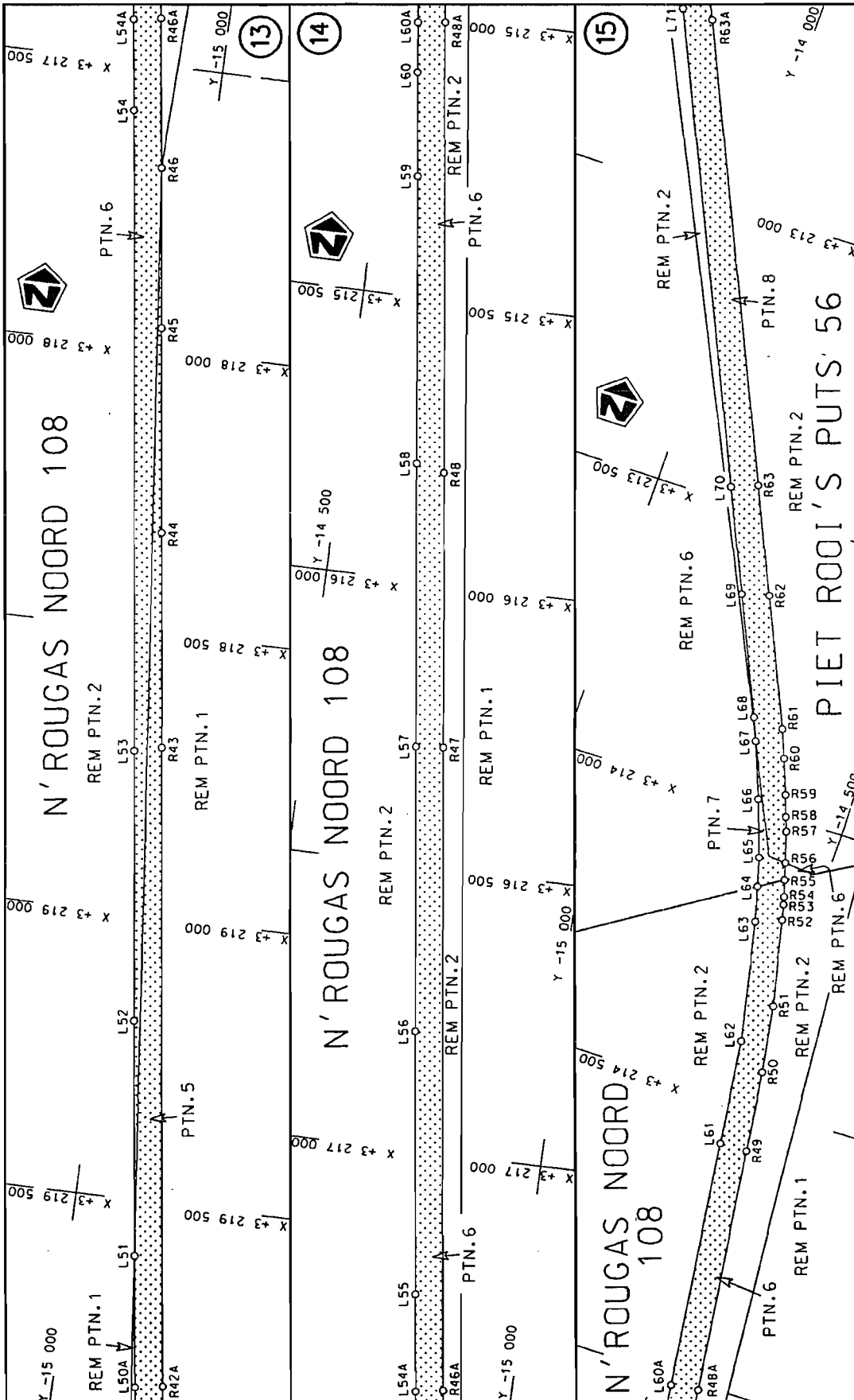
<p>Die Suid Afrikaanse Nasionale Padogenskap Beperk The South African National Roads Agency Limited</p>	<p>Die figuur getoon The figure shown</p> 	<p>stelde padreserwe voor van 'n gedeelte represents the road reserve of a portion van Nasionale Roete of National Route</p> <p>R27 Seksie Section</p> <p>11</p>	<p>Vel Sheet 2 van of 18</p> <p>Plan P766/09</p>
---	--	--	--



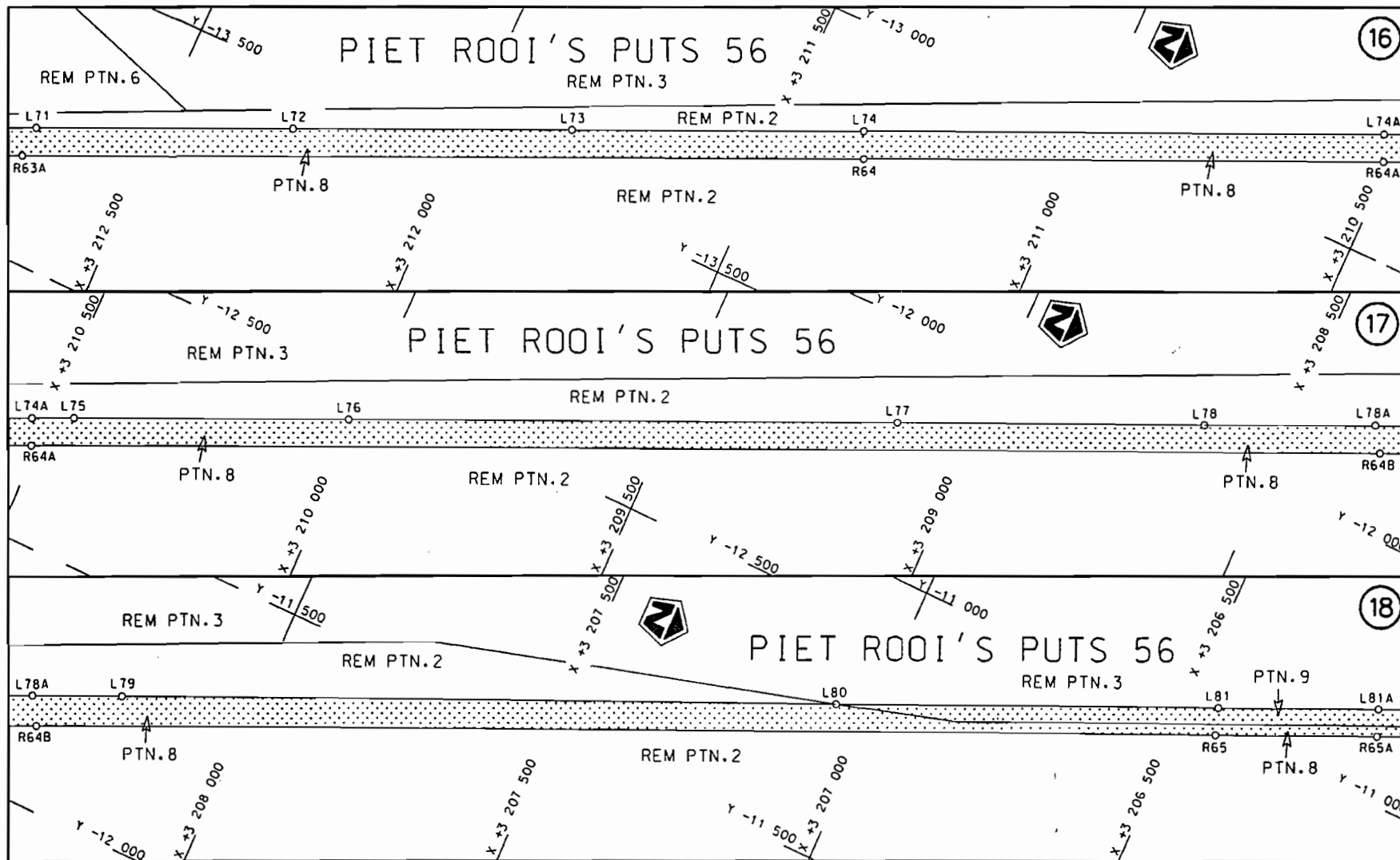
<p>Die Suid Afrikaanse Nasionale Podagentskap Beperk The South African National Roads Agency Limited</p>	<p>Die figuur getoon The figure shown</p> <p>steeldie podreserwe voor van 'n gedeelte represents the road reserve of a portion van Nasionale Roete R27 Sektie of National Route R27 Section</p>	<p>Vel Sheet 3 of 18</p> <p>Plan P766/09</p>
--	---	--




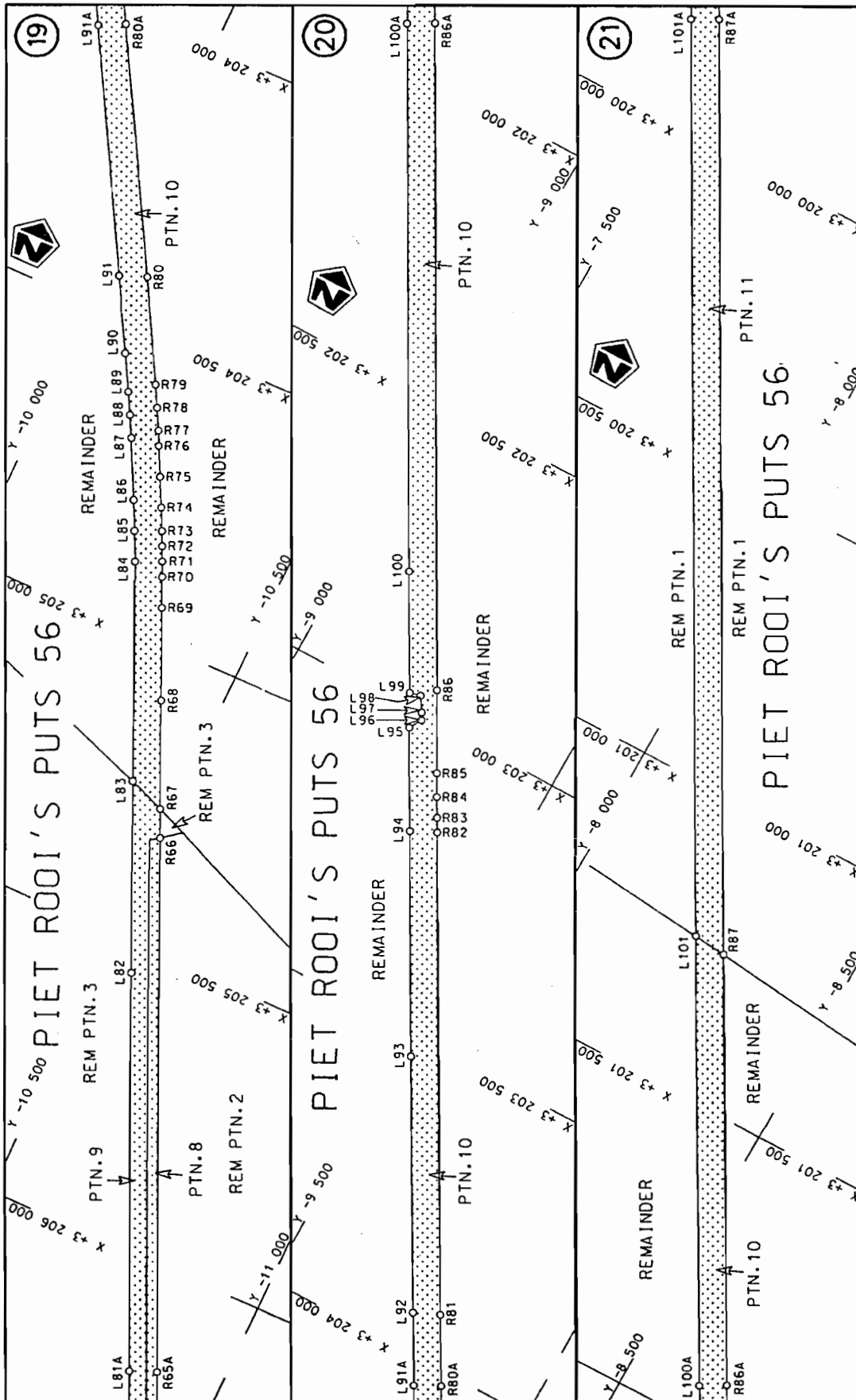
<p>Die Suid Afrikaanse Nasionale Padagentskap Beperk The South African National Roads Agency Limited</p>	<p>Die figuur getoon The figure shown</p>	<p>steldie podreserwe voor von 'n gedeelte represents the road reserve of a portion von Nasionale Roete R27 of National Route</p>	<p>Vel Sheet 4 of 18 Plan P766/09</p>
--	---	---	---




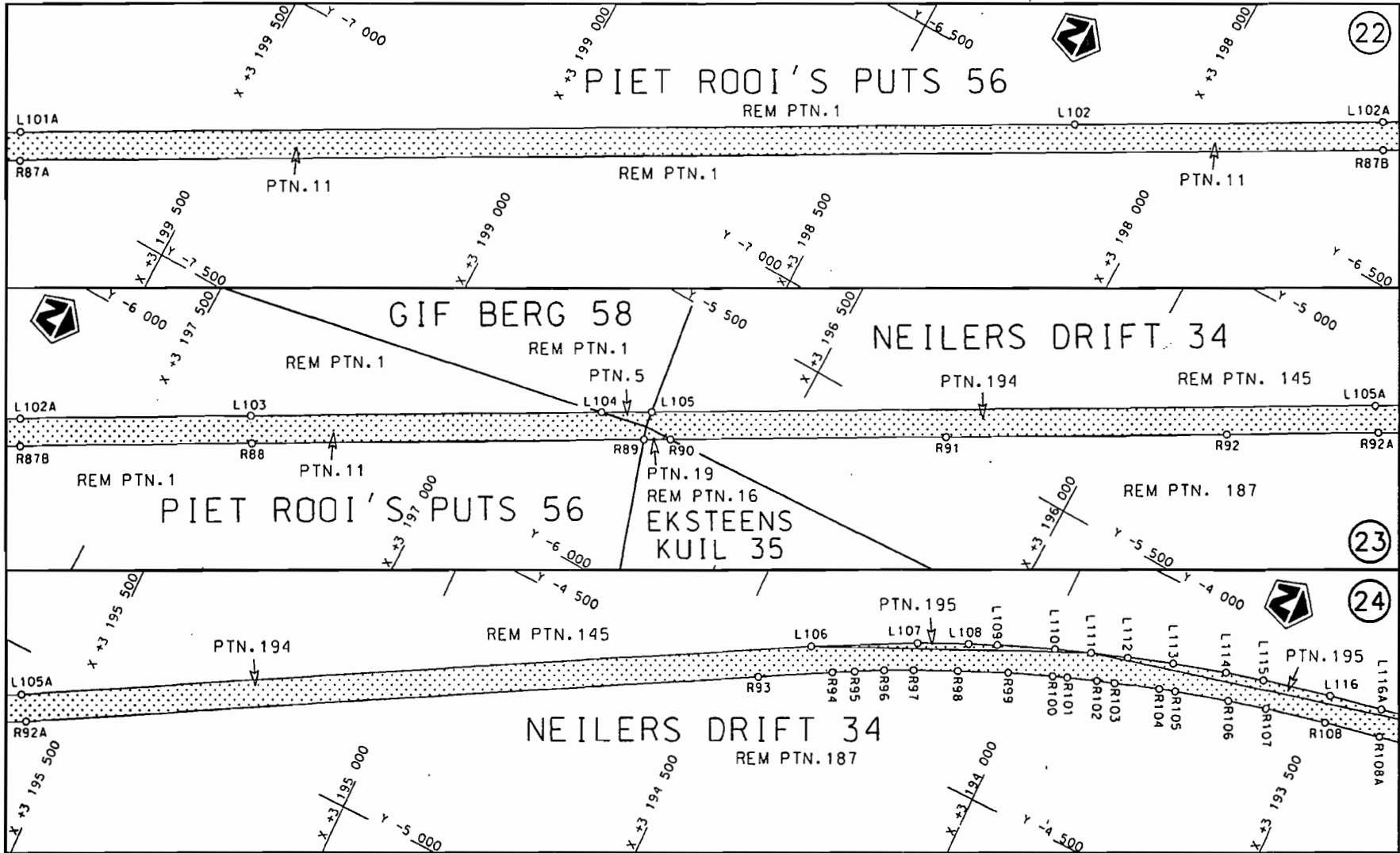
<p>Die Suid Afrikaanse Nasionale Padagentskap Beperk The South African National Roads Agency Limited</p>	<p>Die figuur getoon The figure shown</p>	<p>stel die padreserwe voor van 'n gedeelte represents the road reserve of a portion van Nasionale Roete R27 of National Route R27</p> <p>11</p>	<p>Vel van Sheet 5 of 18</p> <p>Plan P766/09</p>
--	---	--	--




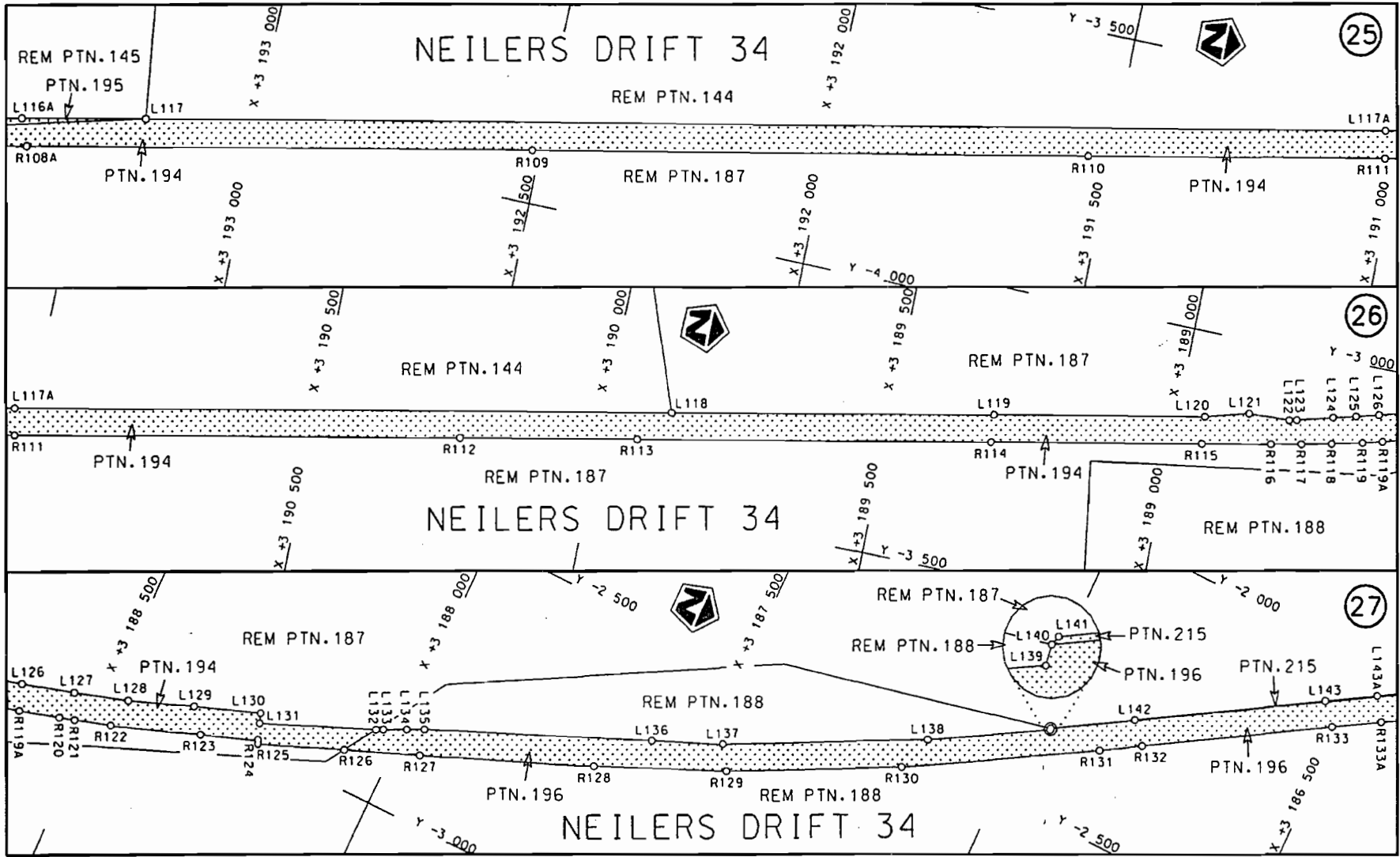
<p>Die Suid Afrikaanse Nasionale Padagentskap Beperk The South African National Roads Agency Limited</p>	<p>Die figuur getoon The figure shown</p> 	<p>steldie padreserwe voor van 'n gedeelte represents the road reserve of a portion van Nasionale Roete R27 Seksie 11 of National Route of Section</p>	<p>Vel Sheet 6 van of 18 Plan P766/09</p>
--	--	--	---




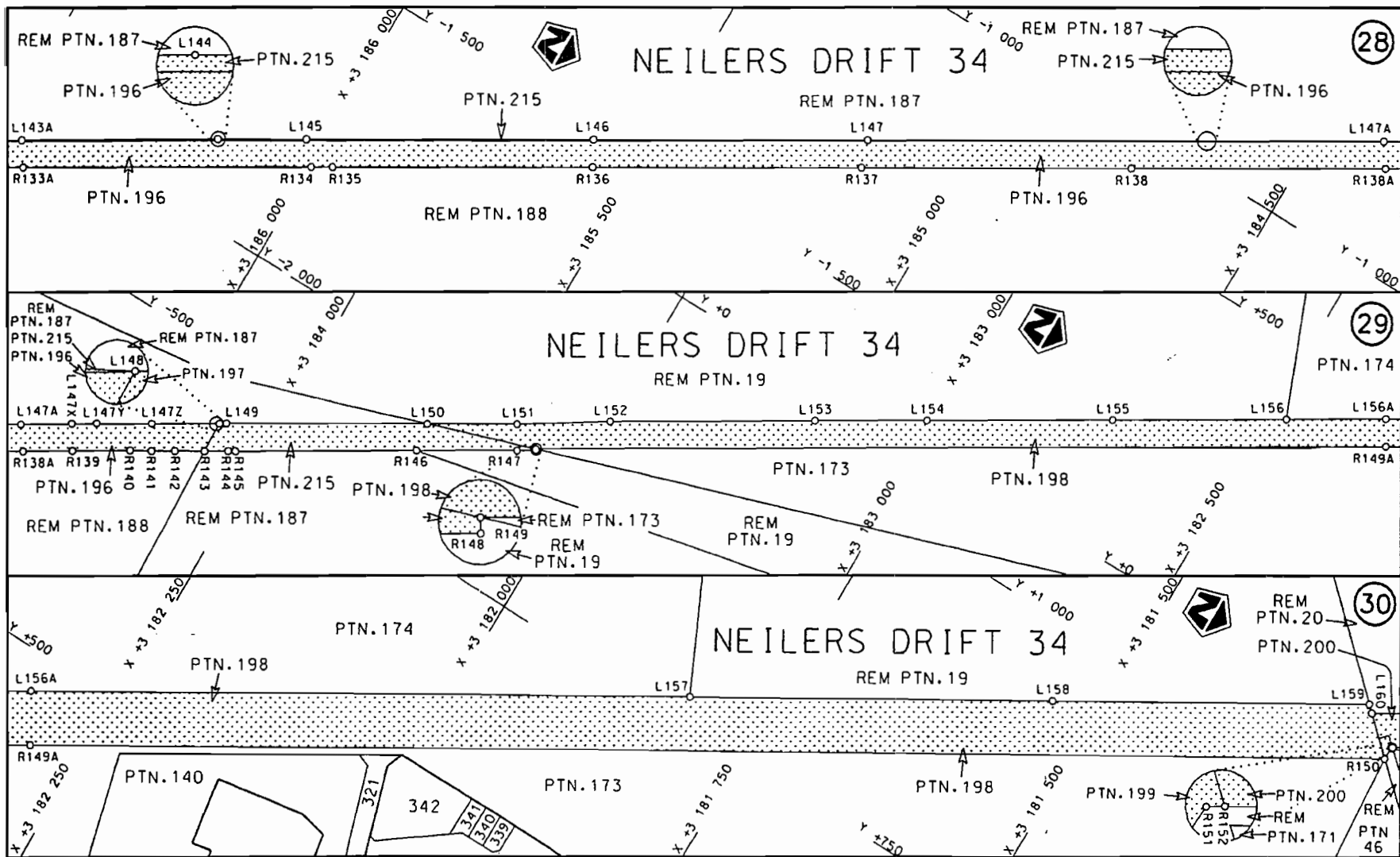
<p>Die Suid Afrikaanse Nasionale Padagentskap Beperk The South African National Roads Agency Limited</p>	<p>Die figuur getoon The figure shown</p> 	<p>steldie padreserwe voor van 'n gedeelte represents the road reserve of a portion van Nasionale Roete R27 Seksie of National Route Section</p>	<p>Vel Sheet 7 of 18 Plan P766/09</p>
--	---	--	---




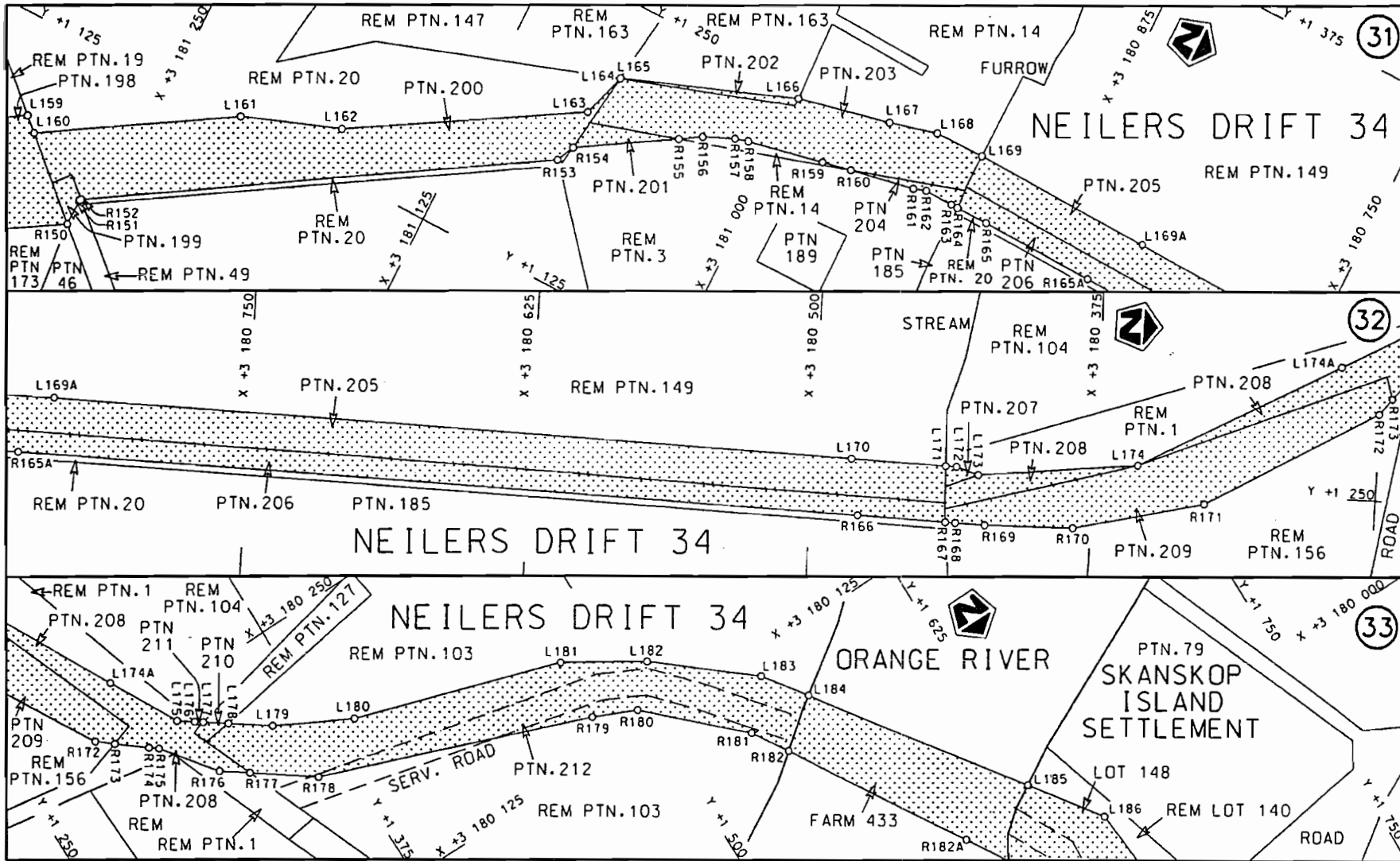
<p>Die Suid Afrikaanse Nasionale Padogentskap Beperk The South African National Roads Agency Limited</p>	<p>Die figuur getoon The figure shown</p>		<p>stel die padreserwe voor van 'n gedeelte represents the road reserve of a portion van Nasionale Roete R27 of National Route R27</p> <p>Seksie 11 Section</p>	<p>Vel Sheet 8 van of 18 Plan P766/09</p>
--	---	--	---	---

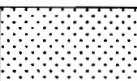


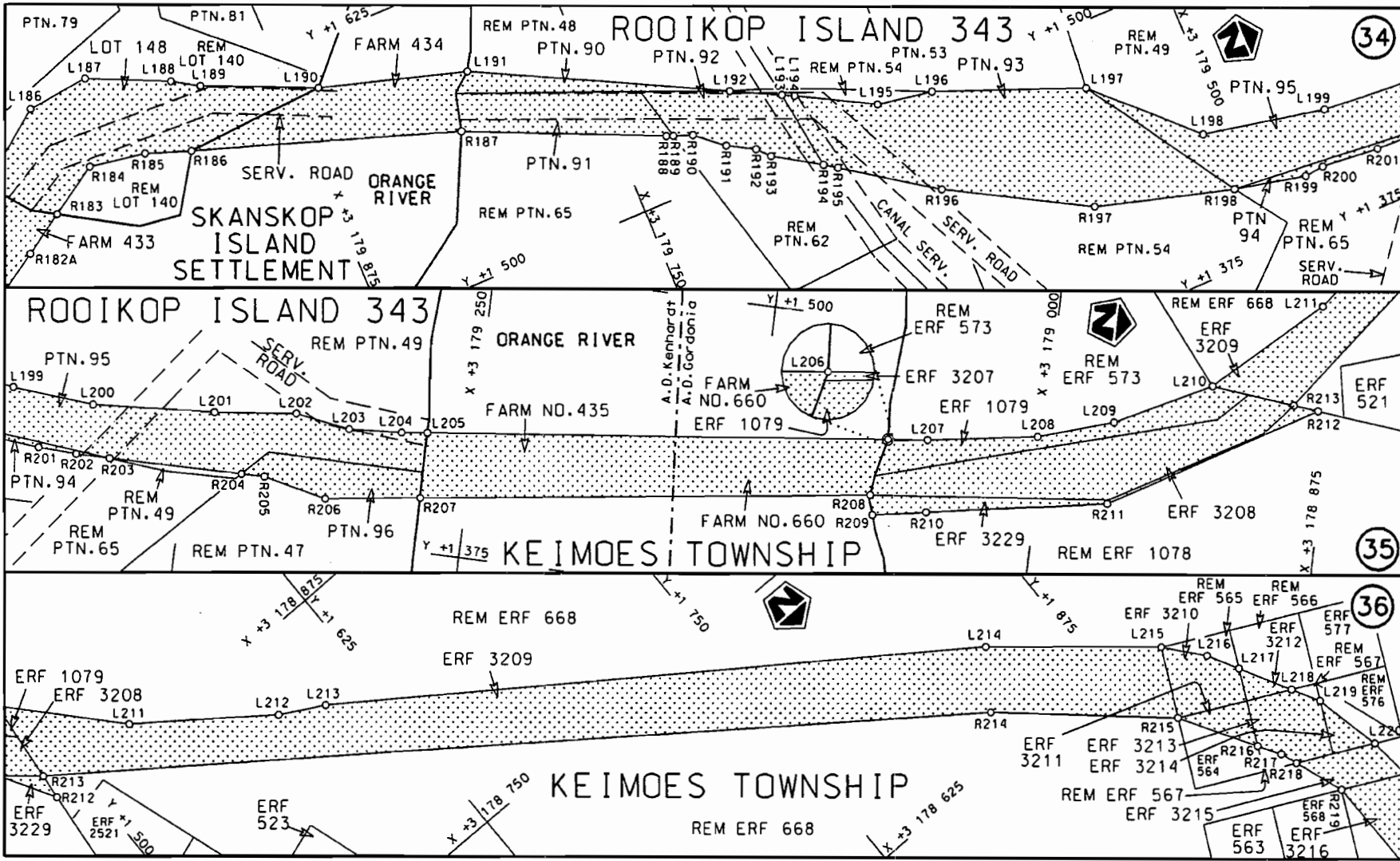
<p>Die Suid Afrikaanse Nasionale Padagentskap Beperk The South African National Roads Agency Limited</p>	<p>Die figuur getoon The figure shown</p>		<p>steldie padreserwe voor van 'n gedeelte represents the road reserve of a portion van Nasionale Raete of National Route</p> <p>R27 Seksie Section</p>	<p>Vel Sheet 9 van of 18</p>	<p>Plan P766/09</p>
--	---	--	---	---	---------------------




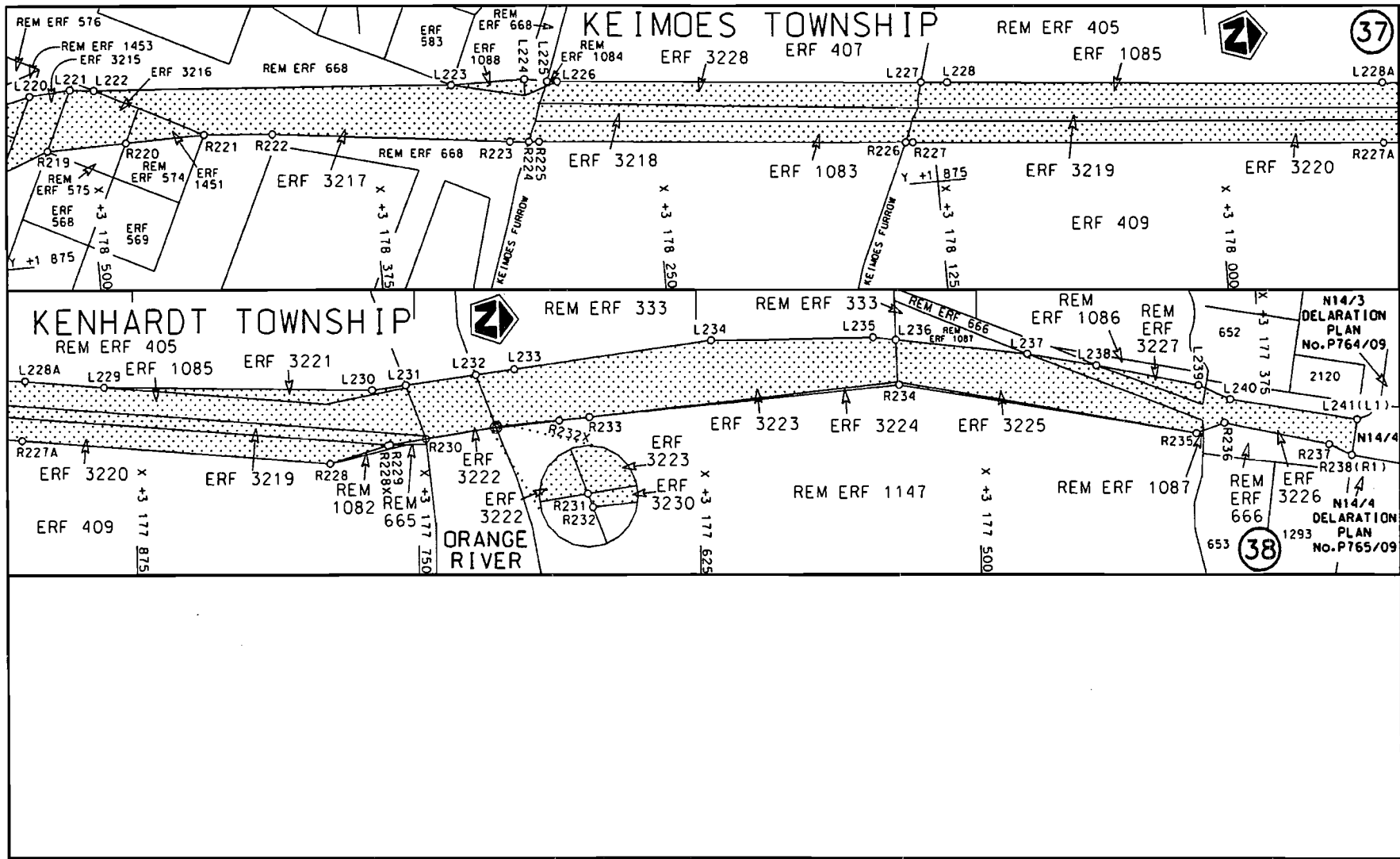
<p>Die Suid Afrikaanse Nasionale Padagentskap Beperk The South African National Roads Agency Limited</p>	<p>Die figuur getoon The figure shown</p>		<p>steldie padreserwe voor van 'n gedeelte represents the road reserve of a portion van Nasionale Roete of National Route</p> <p>R27</p>	<p>Vel Sheet 10 van 18 Plan P766/09</p>
--	---	--	--	---



<p>Die Suid Afrikaanse Nasionale Padagentskap Beperk</p>	<p>Die figuur getoon</p>		<p>steldie padreserwe voor van 'n gedeelte represents the road reserve of a portion van Nasionale Roete R27 Seksie of National Route Section</p>	<p>Vel Sheet 11 van 18 of 18</p>
<p>The South African National Roads Agency Limited</p>	<p>The figure shown</p>		<p>11</p>	<p>Plan P766/09</p>



<p>Die Suid Afrikaanse Nasionale Padagentskap Beperk The South African National Roads Agency Limited</p>	<p>Die figuur getoon The figure shown</p>		<p>steldie padreserwe voor van 'n gedeelte represents the road reserve of a portion van Nasionale Roete R27 Seksie 11 of National Route R27 Section 11</p>	<p>Vel 12 van 18 Sheet 12 of 18 Plan P766/09</p>
--	---	--	--	--



STAATSKOERANT, 26 OKTOBER 2010

No. 33673 17

<p>Die Suid Afrikaanse Nasionale Padagentskap Beperk The South African National Roads Agency Limited</p>	<p>Die figuur getoon The figure shown</p>		<p>stel die padreserwe voor van 'n gedeelte represents the road reserve of a portion van Nasionale Roete R27 Seksie of National Route Section</p>	<p>Vel Sheet 13 van 18 Plan P766/09</p>
--	---	--	---	---

PADRESERWE KOÖRDINATE / ROAD RESERVE CO-ORDINATES									
LINKERKANT/LEFT HAND SIDE					REGTERKANT/RIGHT HAND SIDE				
	Y	X	WG 21°		Y	X			
L1	-14 827.200	3 247 531.940		R1	-14 847.610	3 247 536.890			
L2	-14 848.700	3 247 443.550		R2	-14 870.610	3 247 442.010			
L3	-14 855.130	3 247 355.260		R3	-14 876.560	3 247 350.110			
L4	-14 852.370	3 247 355.930		R4	-14 899.440	3 247 344.600			
L5	-14 851.560	3 247 285.410		R5	-14 887.510	3 247 274.060			
L6	-14 850.550	3 247 217.400		R6	-14 883.240	3 247 248.540			
L7	-14 846.420	3 246 968.550		R7	-14 887.120	3 247 170.960			
L8	-14 860.170	3 246 807.710		R8	-14 913.420	3 246 653.390			
L9	-14 861.880	3 246 792.680		R9	-14 953.150	3 245 912.110			
L10	-14 866.710	3 246 642.830		R10	-14 954.770	3 245 870.380			
L11	-14 882.600	3 246 328.290		R11	-14 989.950	3 245 603.310			
L12	-14 889.460	3 246 196.360		R12	-15 061.020	3 245 059.230			
L13	-14 901.370	3 245 915.110		R13	-15 099.150	3 244 768.680			
L14	-14 922.100	3 245 872.370		R14	-15 157.510	3 244 318.750			
L15	-14 974.000	3 245 483.620		R15	-15 203.550	3 243 967.190			
L16	-14 961.790	3 245 454.710		R16	-15 271.750	3 243 442.810			
L17	-15 279.560	3 243 018.760		R17	-15 575.570	3 241 116.980			
L18	-15 338.570	3 242 567.930		R18	-15 644.670	3 240 586.850			
L19	-15 628.510	3 240 345.840		R19	-15 684.410	3 240 282.650			
L20	-15 701.230	3 239 790.970		R20	-16 029.580	3 237 637.540			
L21	-15 755.450	3 239 373.120		R21	-16 064.050	3 237 371.960			
L22	-15 821.830	3 238 863.360		R22	-16 086.580	3 237 201.480			
L23	-15 982.370	3 237 627.900		R23	-16 142.770	3 236 770.970			
L24	-16 044.700	3 237 151.350		R24	-16 176.940	3 236 509.580			
L25	-16 095.380	3 236 768.070		R25	-16 183.520	3 236 457.070			
L26	-16 132.940	3 236 481.020		R26	-16 212.720	3 236 193.870			
L27	-16 159.790	3 236 271.260		R27	-16 212.110	3 236 002.300			
L28	-16 170.120	3 236 187.660		R28	-15 922.980	3 229 585.500			
L29	-16 160.130	3 235 913.510		R29	-15 898.950	3 229 038.910			
L30	-16 141.200	3 235 477.290		R30	-15 737.580	3 225 445.690			
L31	-16 031.330	3 233 033.330		R31	-15 719.210	3 225 038.510			
L32	-16 008.720	3 232 534.830		R32	-15 673.410	3 224 018.390			
L33	-15 874.170	3 229 537.170		R33	-15 651.320	3 223 537.050			
L34	-15 793.780	3 227 748.210		R34	-15 647.570	3 223 485.600			
L35	-15 748.140	3 226 736.050		R35	-15 646.520	3 223 472.500			
L36	-15 726.440	3 226 252.050		R36	-15 639.680	3 223 394.730			
L37	-15 712.760	3 225 949.190		R37	-15 638.450	3 223 381.800			
L38	-15 690.010	3 225 439.690		R38	-15 635.760	3 223 355.800			
L39	-15 626.300	3 224 023.820		R39	-15 623.130	3 223 243.380			
L40	-15 604.180	3 223 539.800		R40	-15 592.030	3 222 998.590			
L41	-15 600.090	3 223 481.770		R41	-15 476.740	3 222 088.820			
L42	-15 591.920	3 223 389.370		R42	-15 416.780	3 221 615.310			
L43	-15 585.310	3 223 322.010		R43	-15 046.740	3 218 700.620			
L44	-15 545.670	3 223 007.060		R44	-14 998.740	3 218 321.340			
L45	-15 485.240	3 222 530.790		R45	-14 952.930	3 217 961.820			
L46	-15 437.920	3 222 159.040		R46	-14 917.230	3 217 680.120			
L47	-15 433.200	3 222 120.590		R47	-14 740.480	3 216 286.900			
L48	-15 369.570	3 221 621.200		R48	-14 678.940	3 215 802.940			
L49	-15 307.840	3 221 134.440		R49	-14 523.950	3 214 581.020			
L50	-15 248.460	3 220 664.910		R50	-14 505.670	3 214 438.420			
L51	-15 113.060	3 219 598.470		R51	-14 486.840	3 214 323.130			

Vel	14	Van	18	P766/09
Sheet		of		

PADRESERWE KOÖRDINATE / ROAD RESERVE CO-ORDINATES									
LINKERKANT/LEFT HAND SIDE					REGTERKANT/RIGHT HAND SIDE				
	Y	X	WG 21°		Y	X			
L52	-15 060.580	3 219	185.210	R52	-14 453.470	3 214	174.870		
L53	-15 000.670	3 218	712.330	R53	-14 446.700	3 214	148.280		
L54	-14 857.750	3 217	585.420	R54	-14 443.070	3 214	135.100		
L55	-14 815.260	3 217	252.040	R55	-14 434.070	3 214	105.990		
L56	-14 756.670	3 216	790.040	R56	-14 425.330	3 214	076.930		
L57	-14 693.350	3 216	291.600	R57	-14 408.810	3 214	023.580		
L58	-14 630.170	3 215	792.810	R58	-14 400.580	3 213	999.500		
L59	-14 565.980	3 215	287.400	R59	-14 387.420	3 213	962.600		
L60	-14 542.810	3 215	104.910	R60	-14 364.360	3 213	901.990		
L61	-14 476.570	3 214	582.020	R61	-14 344.870	3 213	854.140		
L62	-14 453.500	3 214	398.290	R62	-14 247.830	3 213	637.510		
L63	-14 409.880	3 214	192.280	R63	-14 166.590	3 213	456.560		
L64	-14 393.110	3 214	131.600	R64	-13 216.780	3 211	345.450		
L65	-14 378.960	3 214	081.770	R65	-11 006.690	3 206	434.320		
L66	-14 345.120	3 213	984.390	R66	-10 502.080	3 205	312.660		
L67	-14 308.080	3 213	888.920	R67	-10 481.200	3 205	266.120		
L68	-14 291.540	3 213	850.150	R68	-10 402.010	3 205	090.370		
L69	-14 201.530	3 213	649.700	R69	-10 334.630	3 204	940.460		
L70	-14 122.550	3 213	474.200	R70	-10 311.950	3 204	890.260		
L71	-13 772.900	3 212	696.820	R71	-10 300.500	3 204	865.260		
L72	-13 587.050	3 212	283.280	R72	-10 288.930	3 204	840.340		
L73	-13 385.130	3 211	834.310	R73	-10 277.380	3 204	815.880		
L74	-13 173.500	3 211	364.410	R74	-10 259.190	3 204	778.080		
L75	-12 765.840	3 210	458.730	R75	-10 234.930	3 204	729.000		
L76	-12 566.670	3 210	015.750	R76	-10 209.950	3 204	680.120		
L77	-12 169.220	3 209	133.080	R77	-10 197.400	3 204	655.630		
L78	-11 946.530	3 208	637.700	R78	-10 178.100	3 204	619.300		
L79	-11 785.120	3 208	279.240	R79	-10 158.470	3 204	583.130		
L80	-11 240.020	3 207	067.710	R80	-10 065.540	3 204	416.350		
L81	-10 961.920	3 206	449.590	R81	-9 783.610	3 203	913.580		
L82	-10 556.360	3 205	548.670	R82	-9 366.280	3 203	168.630		
L83	-10 418.040	3 205	241.010	R83	-9 353.490	3 203	146.060		
L84	-10 257.860	3 204	884.790	R84	-9 335.650	3 203	114.230		
L85	-10 234.230	3 204	835.080	R85	-9 315.240	3 203	077.250		
L86	-10 210.160	3 204	785.280	R86	-9 242.920	3 202	948.080		
L87	-10 160.440	3 204	686.770	R87	-8 290.320	3 201	247.650		
L88	-10 141.130	3 204	650.090	R88	-6 091.560	3 197	322.870		
L89	-10 121.390	3 204	613.840	R89	-5 751.930	3 196	716.260		
L90	-10 088.150	3 204	553.800	R90	-5 728.720	3 196	675.290		
L91	-10 021.390	3 204	434.140	R91	-5 488.730	3 196	246.290		
L92	-9 740.260	3 203	932.780	R92	-5 243.940	3 195	809.850		
L93	-9 517.910	3 203	535.870	R93	-4 474.600	3 194	436.500		
L94	-9 323.700	3 203	189.450	R94	-4 409.890	3 194	320.540		
L95	-9 233.950	3 203	029.130	R95	-4 391.170	3 194	285.530		
L96	-9 246.030	3 203	007.490	R96	-4 366.930	3 194	239.200		
L97	-9 239.050	3 202	995.660	R97	-4 343.960	3 194	192.400		
L98	-9 222.880	3 202	970.090	R98	-4 310.710	3 194	121.280		
L99	-9 203.930	3 202	974.990	R99	-4 274.380	3 194	037.770		
L100	-9 098.450	3 202	786.910	R100	-4 244.770	3 193	964.030		
L101	-8 232.730	3 201	241.760	R101	-4 235.270	3 193	939.360		
L102	-6 519.710	3 198	183.630	R102	-4 217.110	3 193	889.350		

Vel	15	Van	18	P766/09
Sheet		of		

PADRESERWE KOÖRDINATE / ROAD RESERVE CO-ORDINATES						
LINKERKANT/LEFT HAND SIDE				REGTERKANT/RIGHT HAND SIDE		
	Y	X	WG 21°		Y	X
L103	-6 051.000	3 197 347.370		R103	-4 206.940	3 193 859.630
L104	-5 746.860	3 196 804.400		R104	-4 181.530	3 193 783.360
L105	-5 703.450	3 196 726.950		R105	-4 172.910	3 193 756.420
L106	-4 385.960	3 194 374.410		R106	-4 146.260	3 193 665.010
L107	-4 298.220	3 194 206.620		R107	-4 129.080	3 193 599.220
L108	-4 259.980	3 194 124.460		R108	-4 104.970	3 193 493.040
L109	-4 239.460	3 194 076.860		R109	-3 908.280	3 192 513.470
L110	-4 200.540	3 193 981.070		R110	-3 713.190	3 191 540.540
L111	-4 177.750	3 193 920.100		R111	-3 608.890	3 191 021.760
L112	-4 156.930	3 193 858.500		R112	-3 452.920	3 190 244.790
L113	-4 131.000	3 193 780.830		R113	-3 390.710	3 189 935.500
L114	-4 104.280	3 193 689.740		R114	-3 266.500	3 189 315.790
L115	-4 087.020	3 193 624.130		R115	-3 192.540	3 188 947.110
L116	-4 059.410	3 193 505.210		R116	-3 168.400	3 188 826.130
L117	-3 997.130	3 193 197.780		R117	-3 157.350	3 188 772.670
L118	-3 332.650	3 189 885.000		R118	-3 145.450	3 188 719.630
L119	-3 219.020	3 189 320.330		R119	-3 132.550	3 188 666.280
L120	-3 144.940	3 188 951.560		R120	-3 103.900	3 188 560.830
L121	-3 123.250	3 188 875.470		R121	-3 096.110	3 188 534.400
L122	-3 121.020	3 188 802.420		R122	-3 076.880	3 188 472.360
L123	-3 117.700	3 188 789.580		R123	-3 016.970	3 188 304.090
L124	-3 100.120	3 188 726.380		R124	-2 985.100	3 188 223.240
L125	-3 089.710	3 188 686.870		R125	-2 991.710	3 188 220.080
L126	-3 078.930	3 188 647.340		R126	-2 934.950	3 188 078.390
L127	-3 052.990	3 188 555.530		R127	-2 885.280	3 187 954.410
L128	-3 023.920	3 188 463.270		R128	-2 767.500	3 187 666.570
L129	-2 985.150	3 188 352.960		R129	-2 672.460	3 187 450.510
L130	-2 940.490	3 188 239.620		R130	-2 528.860	3 187 171.570
L131	-2 957.360	3 188 233.350		R131	-2 348.490	3 186 866.220
L132	-2 878.430	3 188 043.520		R132	-2 308.910	3 186 802.150
L133	-2 876.380	3 188 038.600		R133	-2 130.850	3 186 510.900
L134	-2 854.500	3 187 994.960		R134	-1 819.940	3 185 997.800
L135	-2 840.540	3 187 966.560		R135	-1 800.010	3 185 965.150
L136	-2 682.310	3 187 593.500		R136	-1 561.060	3 185 569.970
L137	-2 632.540	3 187 476.550		R137	-1 313.200	3 185 160.200
L138	-2 465.270	3 187 150.990		R138	-1 065.470	3 184 750.570
L139	-2 354.610	3 186 960.920		R139	- 784.840	3 184 289.380
L140	-2 351.710	3 186 961.400		R140	- 732.110	3 184 202.490
L141	-2 351.310	3 186 961.290		R141	- 713.270	3 184 169.810
L142	-2 273.510	3 186 833.510		R142	- 692.270	3 184 134.120
L143	-2 095.550	3 186 541.940		R143	- 665.020	3 184 088.490
L144	-1 865.280	3 186 164.440		R144	- 642.160	3 184 050.240
L145	-1 783.970	3 186 029.760		R145	- 638.770	3 184 044.030
L146	-1 520.030	3 185 593.500		R146	- 470.240	3 183 766.610
L147	-1 267.150	3 185 175.280		R147	- 378.020	3 183 614.550
L147X	- 745.800	3 184 314.040		R148	- 360.040	3 183 585.440
L147Y	- 722.910	3 184 276.500		R149	- 358.280	3 183 586.530
L147Z	- 672.570	3 184 193.030		R150	1 051.800	3 181 264.340
L148	- 610.730	3 184 090.420		R151	1 063.690	3 181 263.980
L149	- 604.710	3 184 080.650		R152	1 063.910	3 181 263.630
L150	- 420.150	3 183 773.920		R153	1 174.690	3 181 084.000

Vel	16	Van	18	P766/09
Sheet		of		

PADRESERWE KOÖRDINATE / ROAD RESERVE CO-ORDINATES											
LINKERKANT/LEFT HAND SIDE					REGTERKANT/RIGHT HAND SIDE						
	Y		X	WG 21°		Y		X			
L151	-	338.720	3	183	637.870	R154	1	182.460	3	181	080.230
L152	-	249.120	3	183	497.490	R155	1	207.010	3	181	040.200
L153		-60.090	3	183	186.660	R156	1	212.600	3	181	031.330
L154		44.140	3	183	014.880	R157	1	218.560	3	181	018.220
L155		215.080	3	182	733.590	R158	1	220.260	3	181	012.440
L156		374.930	3	182	470.800	R159	1	227.340	3	180	979.090
L157		770.740	3	181	818.520	R160	1	230.080	3	180	966.240
L158		938.300	3	181	542.210	R161	1	235.790	3	180	937.780
L159	1	084.900	3	181	301.330	R162	1	237.570	3	180	932.280
L160	1	079.570	3	181	295.370	R163	1	237.310	3	180	919.530
L161	1	127.180	3	181	216.940	R164	1	237.320	3	180	916.720
L162	1	142.990	3	181	174.380	R165	1	237.360	3	180	902.420
L163	1	198.700	3	181	081.370	R166	1	230.660	3	180	478.470
L164	1	217.930	3	181	075.000	R167	1	229.940	3	180	439.430
L165	1	218.230	3	181	074.960	R168	1	229.860	3	180	435.030
L166	1	246.460	3	181	001.040	R169	1	229.660	3	180	421.890
L167	1	255.900	3	180	960.040	R170	1	230.710	3	180	382.840
L168	1	261.530	3	180	939.180	R171	1	244.360	3	180	325.070
L169	1	261.890	3	180	917.120	R172	1	287.130	3	180	250.410
L170	1	254.620	3	180	482.620	R173	1	293.950	3	180	244.850
L171	1	253.890	3	180	440.620	R174	1	305.670	3	180	235.300
L172	1	253.810	3	180	435.770	R175	1	309.150	3	180	232.580
L173	1	250.930	3	180	426.020	R176	1	326.520	3	180	209.840
L174	1	259.110	3	180	355.570	R177	1	337.390	3	180	202.020
L175	1	322.500	3	180	238.460	R178	1	362.280	3	180	184.120
L176	1	328.850	3	180	233.910	R179	1	478.120	3	180	141.260
L177	1	331.960	3	180	231.680	R180	1	496.830	3	180	132.990
L178	1	340.960	3	180	225.250	R181	1	534.000	3	180	097.570
L179	1	357.060	3	180	213.720	R182	1	543.510	3	180	082.170
L180	1	389.390	3	180	196.970	R183	1	600.660	3	179	989.610
L181	1	478.960	3	180	168.510	R184	1	613.890	3	179	968.180
L182	1	511.610	3	180	148.370	R185	1	609.560	3	179	943.370
L183	1	550.700	3	180	116.050	R186	1	602.420	3	179	923.930
L184	1	563.940	3	180	097.730	R187	1	563.460	3	179	810.900
L185	1	625.420	3	180	012.680	R188	1	525.960	3	179	727.470
L186	1	646.930	3	179	982.930	R189	1	525.290	3	179	725.670
L187	1	649.470	3	179	955.440	R190	1	522.310	3	179	717.620
L188	1	633.440	3	179	920.790	R191	1	512.510	3	179	705.690
L189	1	626.480	3	179	909.530	R192	1	505.960	3	179	694.140
L190	1	605.280	3	179	862.080	R193	1	500.530	3	179	689.320
L191	1	586.170	3	179	798.490	R194	1	487.960	3	179	669.460
L192	1	533.310	3	179	695.160	R195	1	484.310	3	179	664.090
L193	1	522.840	3	179	674.770	R196	1	457.860	3	179	625.160
L194	1	520.270	3	179	669.780	R197	1	424.550	3	179	565.670
L195	1	502.460	3	179	637.180	R198	1	407.350	3	179	505.310
L196	1	498.120	3	179	612.830	R199	1	400.310	3	179	474.160
L197	1	472.960	3	179	549.320	R200	1	401.140	3	179	465.700
L198	1	434.500	3	179	509.110	R201	1	398.850	3	179	440.490
L199	1	423.200	3	179	455.490	R202	1	398.100	3	179	423.420
L200	1	420.180	3	179	418.700	R203	1	398.140	3	179	408.610
L201	1	423.640	3	179	364.830	R204	1	398.690	3	179	349.700

Vel 17 Van 18
Sheet of

P766/09

PADRESERWE KOÖRDINATE / ROAD RESERVE CO-ORDINATES						
LINKERKANT/LEFT HAND SIDE				REGTERKANT/RIGHT HAND SIDE		
	Y	X	WG 21°		Y	X
L202	1 427.630	3 179	329.140	R205	1 398.840	3 179 339.630
L203	1 423.950	3 179	304.890	R206	1 392.810	3 179 311.800
L204	1 425.430	3 179	281.720	R207	1 395.790	3 179 289.720
L205	1 426.720	3 179	270.410	R208	1 425.040	3 179 073.190
L206	1 449.820	3 179	068.220	R209	1 416.590	3 179 071.092
L207	1 451.810	3 179	050.800	R210	1 420.740	3 179 047.570
L208	1 459.474	3 179	002.540	R211	1 434.690	3 178 968.500
L209	1 470.010	3 178	969.930	R212	1 486.220	3 178 880.580
L210	1 491.100	3 178	928.220	R213	1 487.340	3 178 891.570
L211	1 531.210	3 178	884.150	R214	1 826.460	3 178 643.200
L212	1 584.230	3 178	844.730	R215	1 888.650	3 178 588.200
L213	1 602.920	3 178	834.570	R216	1 907.990	3 178 556.150
L214	1 842.900	3 178	666.400	R217	1 913.640	3 178 546.790
L215	1 902.570	3 178	616.440	R218	1 916.330	3 178 539.530
L216	1 915.860	3 178	600.410	R219	1 924.300	3 178 518.000
L217	1 923.200	3 178	587.060	R220	1 924.560	3 178 482.810
L218	1 935.170	3 178	565.270	R221	1 924.780	3 178 447.550
L219	1 941.700	3 178	553.390	R222	1 922.140	3 178 417.320
L220	1 948.290	3 178	523.870	R223	1 909.570	3 178 313.020
L221	1 949.330	3 178	505.710	R224	1 908.790	3 178 304.600
L222	1 948.140	3 178	495.040	R225	1 908.370	3 178 300.050
L223	1 935.680	3 178	336.640	R226	1 893.310	3 178 137.560
L224	1 935.360	3 178	304.130	R227	1 893.100	3 178 135.260
L225	1 933.503	3 178	294.311	R228	1 861.120	3 177 788.330
L226	1 933.090	3 178	289.840	R228X	1 868.540	3 177 762.750
L227	1 918.190	3 178	128.500	R229	1 868.830	3 177 761.720
L228	1 917.130	3 178	116.970	R230	1 871.160	3 177 745.810
L229	1 896.010	3 177	888.470	R231	1 875.723	3 177 714.676
L230	1 892.560	3 177	769.380	R232	1 875.505	3 177 714.596
L231	1 894.450	3 177	754.440	R232X	1 878.100	3 177 686.600
L232	1 898.380	3 177	723.210	R233	1 879.330	3 177 673.330
L233	1 900.540	3 177	706.100	R234	1 890.900	3 177 535.020
L234	1 911.730	3 177	618.510	R235	1 867.740	3 177 401.490
L235	1 911.620	3 177	546.290	R236	1 872.290	3 177 390.150
L236	1 910.390	3 177	536.170	R237	1 862.060	3 177 343.700
L237	1 903.310	3 177	477.520	R238	1 857.280	3 177 333.740
L238	1 897.850	3 177	446.890			
L239	1 888.580	3 177	401.470			
L240	1 882.200	3 177	387.430			
L241	1 872.590	3 177	331.120			

Vel	18	Van	18	P766/09
Sheet		of		