

# Government Gazette Staatskoerant

REPUBLIC OF SOUTH AFRICA  
REPUBLIEK VAN SUID-AFRIKA

Vol. 544

Pretoria, 26 October  
Oktober 2010

**No. 33674**

**IMPORTANT NOTICE**

The Government Printing Works will not be held responsible for faxed documents not received due to errors on the fax machine or faxes received which are unclear or incomplete. Please be advised that an "OK" slip, received from a fax machine, will not be accepted as proof that documents were received by the GPW for printing. If documents are faxed to the GPW it will be the sender's responsibility to phone and confirm that the documents were received in good order.

Furthermore the Government Printing Works will also not be held responsible for cancellations and amendments which have not been done on original documents received from clients.

**CONTENTS****INHOUD**

<i>No.</i>	<i>Page No.</i>	<i>Gazette No.</i>	<i>No.</i>	<i>Bladsy No.</i>	<i>Koerant No.</i>
<b>GOVERNMENT NOTICE</b>			<b>GOEWERMENTSKENNISGEWING</b>		
<b>Transport, Department of</b>			<b>Vervoer, Departement van</b>		
<i>Government Notice</i>			<i>Goewermentskennisgewing</i>		
957		South African National Roads Agency Limited and the National Roads Act (7/1998): The South African National Roads Agency Limited: Declaration amendment of National Road N10 Section 10: Amendment of Declaration No. 630 of 2005 .....	3	33674	
					957 Suid-Afrikaanse Nasionale Padagentskap Beperk en die Nasionale Paaie Wet (7/1998): Die Suid-Afrikaanse Nasionale Padagentskap Beperk: Verklaring wysiging van Nasionale Pad N10 Seksie 10: Wysiging van Verklaring No. 630 van 2005 .....
					4 33764

---

## GOVERNMENT NOTICE

---

### DEPARTMENT OF TRANSPORT

No. 957

26 October 2010

## THE SOUTH AFRICAN NATIONAL ROADS AGENCY LIMITED

Registration No: 98/09584/06

---

### DECLARATION AMENDMENT OF NATIONAL ROAD N10 SECTION 10

AMENDMENT OF DECLARATION No. 630 OF 2005

By virtue of section 40(1)(b) of the South African National Roads Agency Limited and the National Roads Act, 1998 (Act No. 7 of 1998), I hereby amend declaration No. 630 of 2005, by substituting the section of the descriptive declaration from Marydale up to Groblershoop, with the subjoined sheets 1 to 10 of Plan No. P763/09.

(National Road N10 Section 10 Marydale – Groblershoop)

  
MINISTER OF TRANSPORT

---

## GOEWERMENTSKENNISGEWING

---

### DEPARTEMENT VAN VERVOER

No. 957

26 Oktober 2010

## DIE SUID-AFRIKAANSE NASIONALE PADAGENTSKAP BEPERK

Registrasie No: 98/09584/06

---

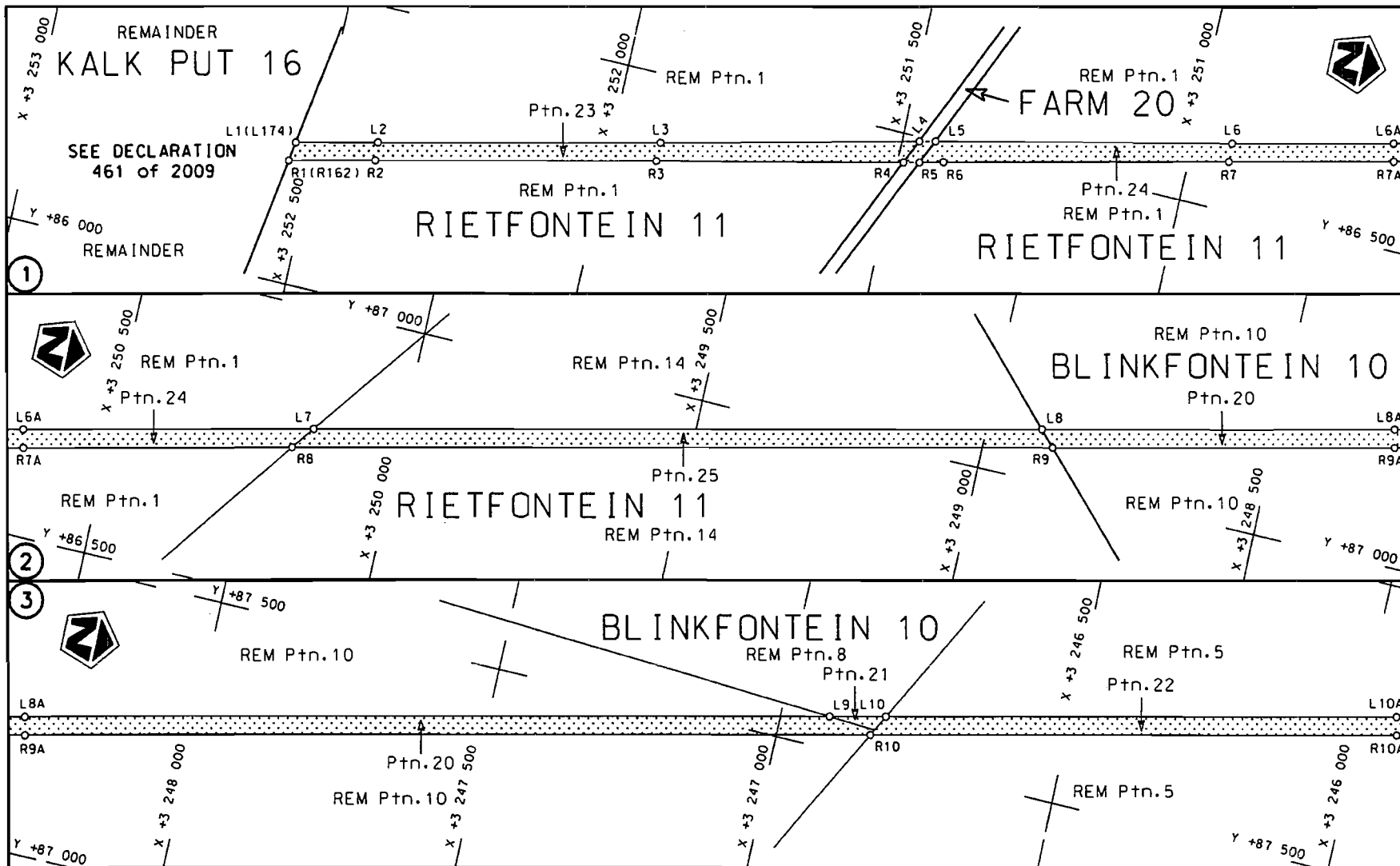
### VERKLARING WYSIGING VAN NASIONALE PAD N10 SEKSIE 10

#### WYSIGING VAN VERKLARING NO. 630 VAN 2005

Kragtens Artikel 40(1)(b) van die Suid-Afrikaanse Nasionale Padagentskap Beperk en die Nasionale Paaie Wet, 1998 (Wet no. 7 van 1998), wysig ek hiermee verklaring no. 630 van 2005, deur die gedeelte van die beskrywende verklaring vanaf Marydale tot by Groblershoop, te vervang met meegaande velle 1 tot 10 van Plan no. P763/09.

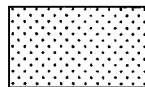
(Nasionale Pad N10 Seksie 10 Marydale – Groblershoop)

  
MINISTER VAN VERVOER



Die Suid Afrikaanse Nasionale Padagentskap Beperk  
The South African National Roads Agency Limited

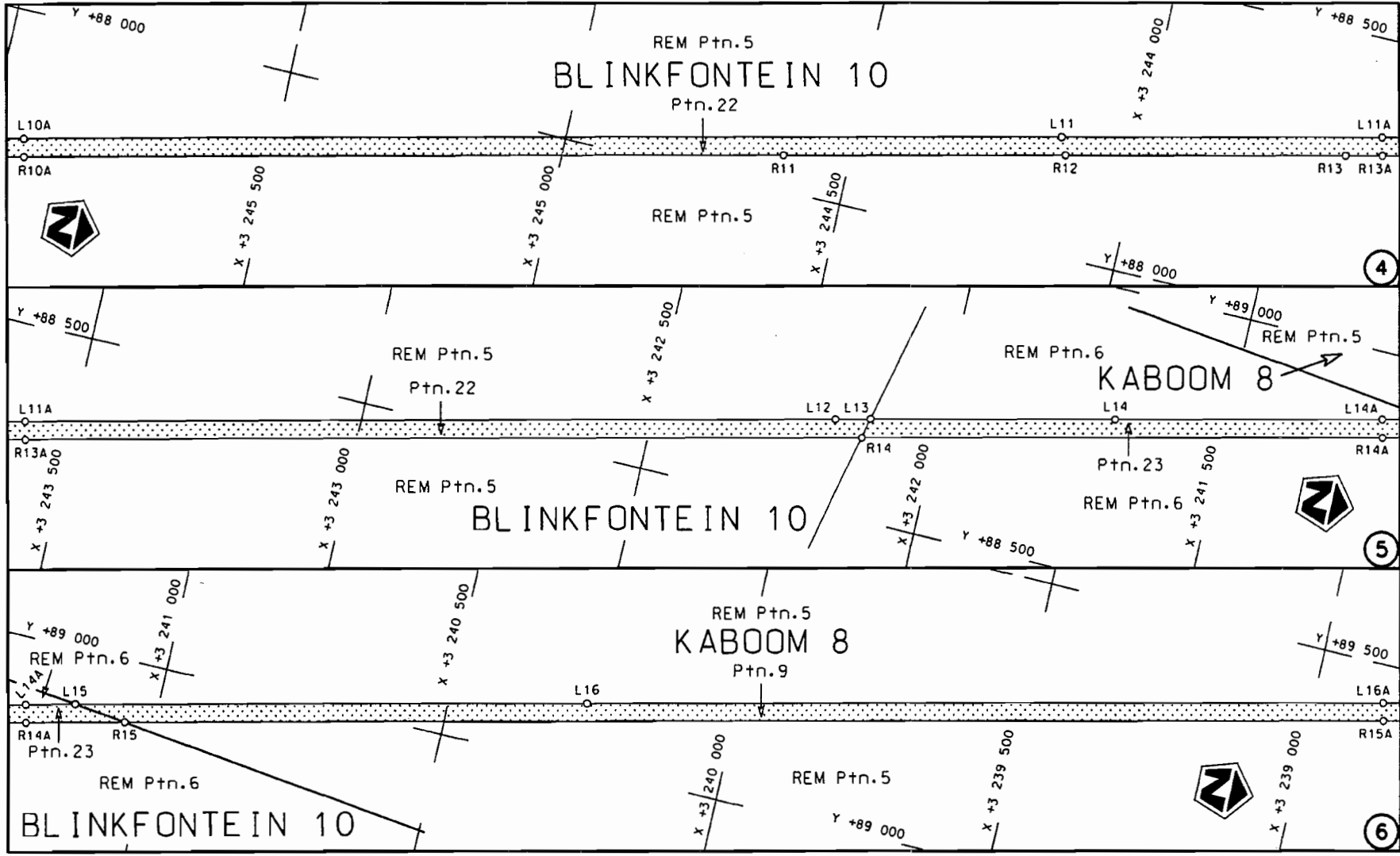
Die figuur getoon  
The figure shown




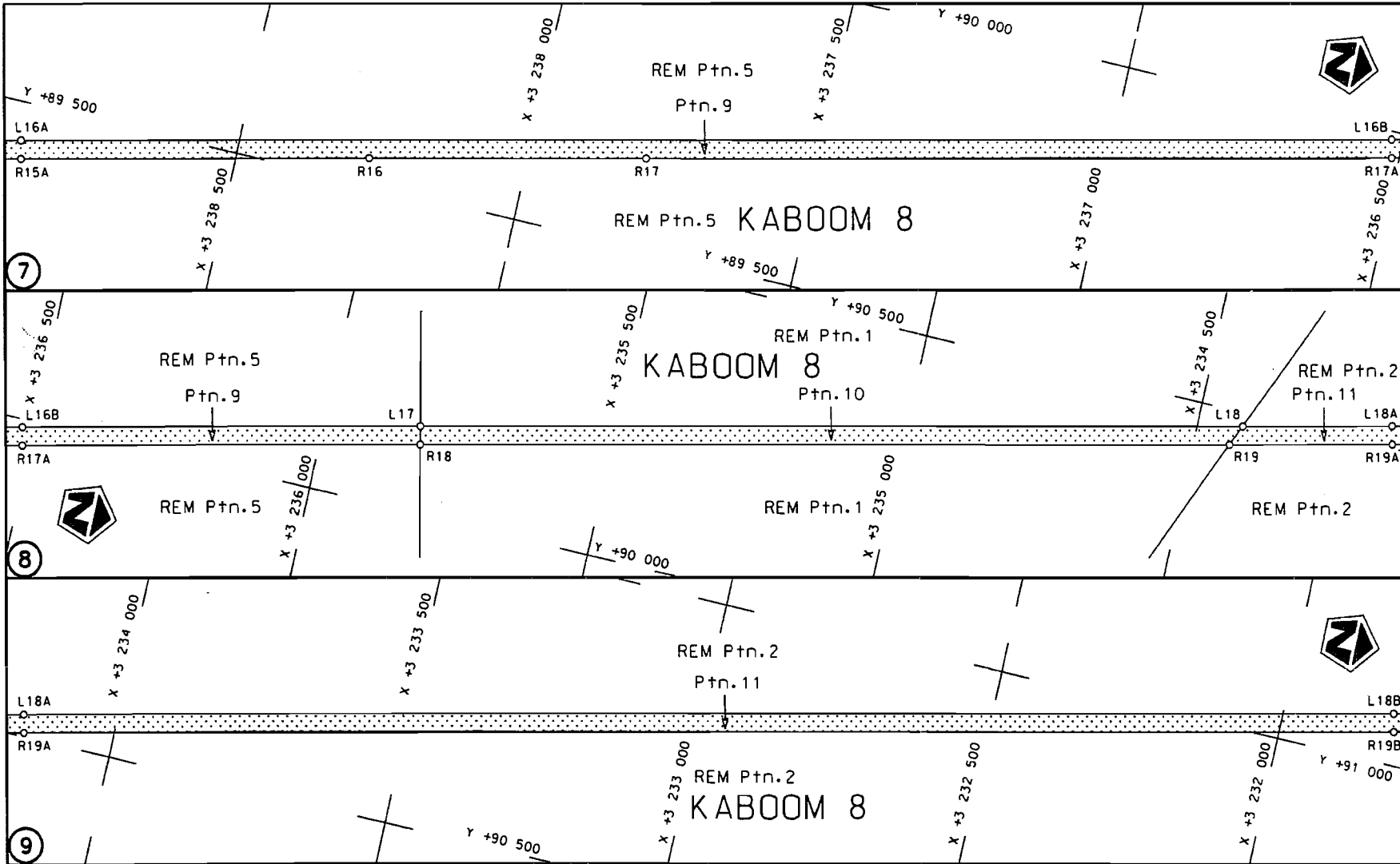
steldie padreserwe voor van 'n gedeelte  
represents the road reserve of a portion  
van Nasionale Roete N10 Sektie  
of National Route Section

Vel  
Sheet 1 van 10  
of

Plan P763/09

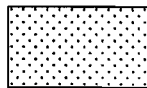


<p>Die Suid Afrikaanse Nasionale Padogentskap Beperk The South African National Roads Agency Limited</p>	<p>Die figuur getoon The figure shown</p>		<p>steldie padreserwe voor van 'n gedeelte represents the road reserve of a portion van Nasionale Roete N10 Seksie 10 of National Route Section</p>	<p>Vel Sheet 2 van 10 Plan P763/09</p>
--	---	--	---	--



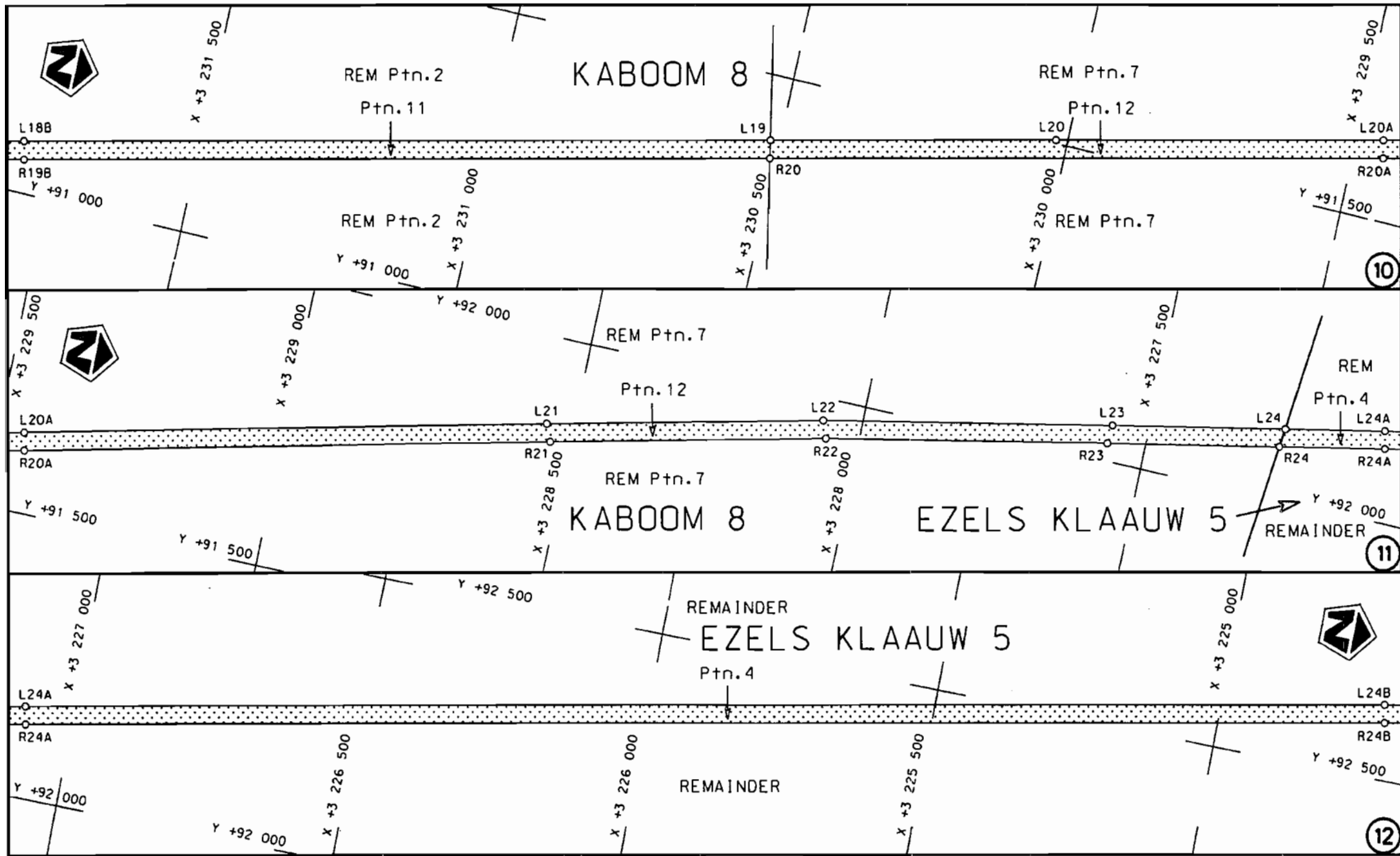
Die Suid Afrikaanse Nasionale Padagentskap Beperk  
The South African National Roads Agency Limited

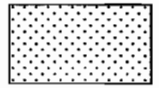
Die figuur getoon  
The figure shown



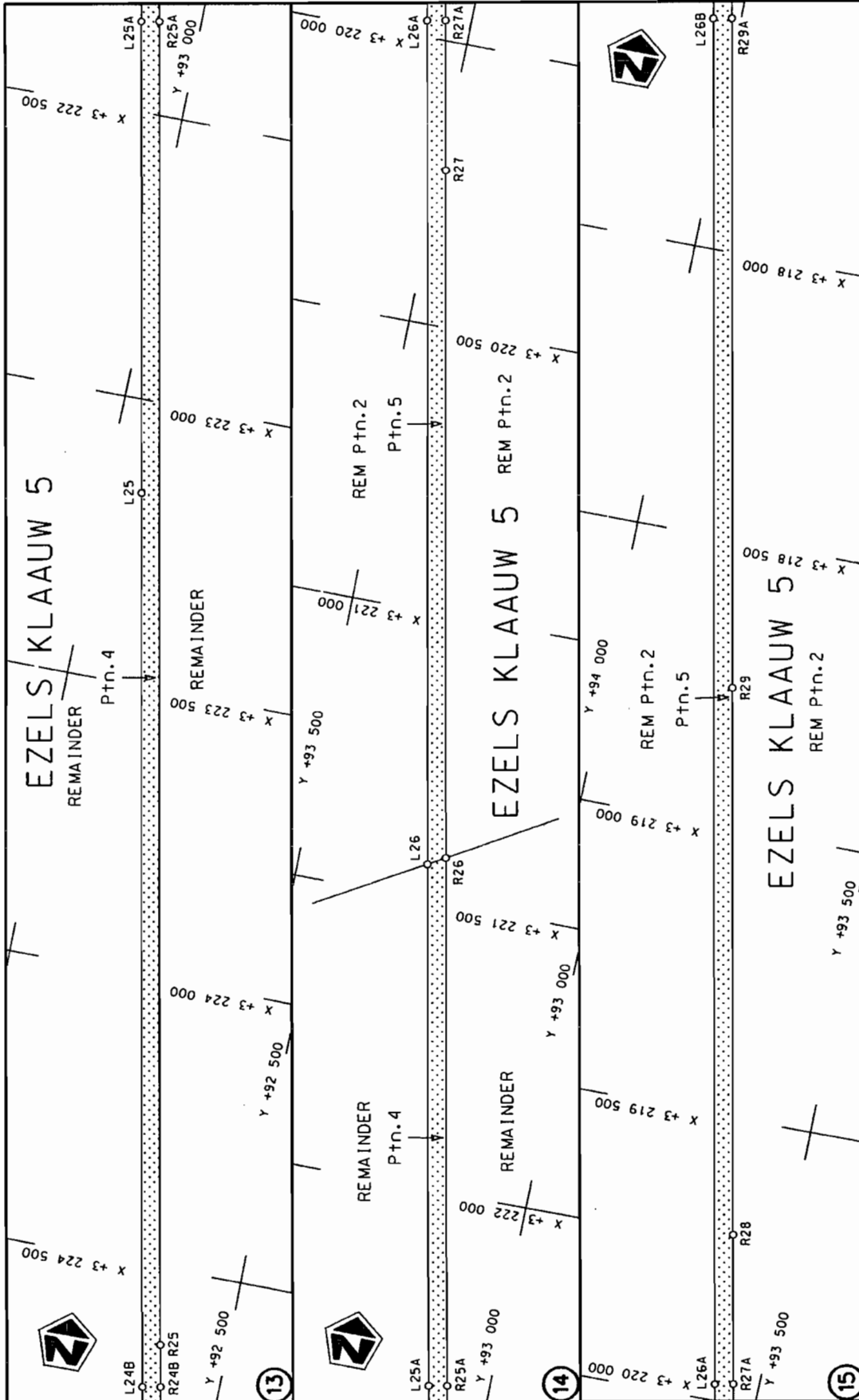
steldie padreserwe voor van 'n gedeelte  
represents the road reserve of a portion  
van Nasionale Roete N10 Seksie  
of National Route 10 Section


Vel 3 van 10  
Sheet of  
Plan P763/09

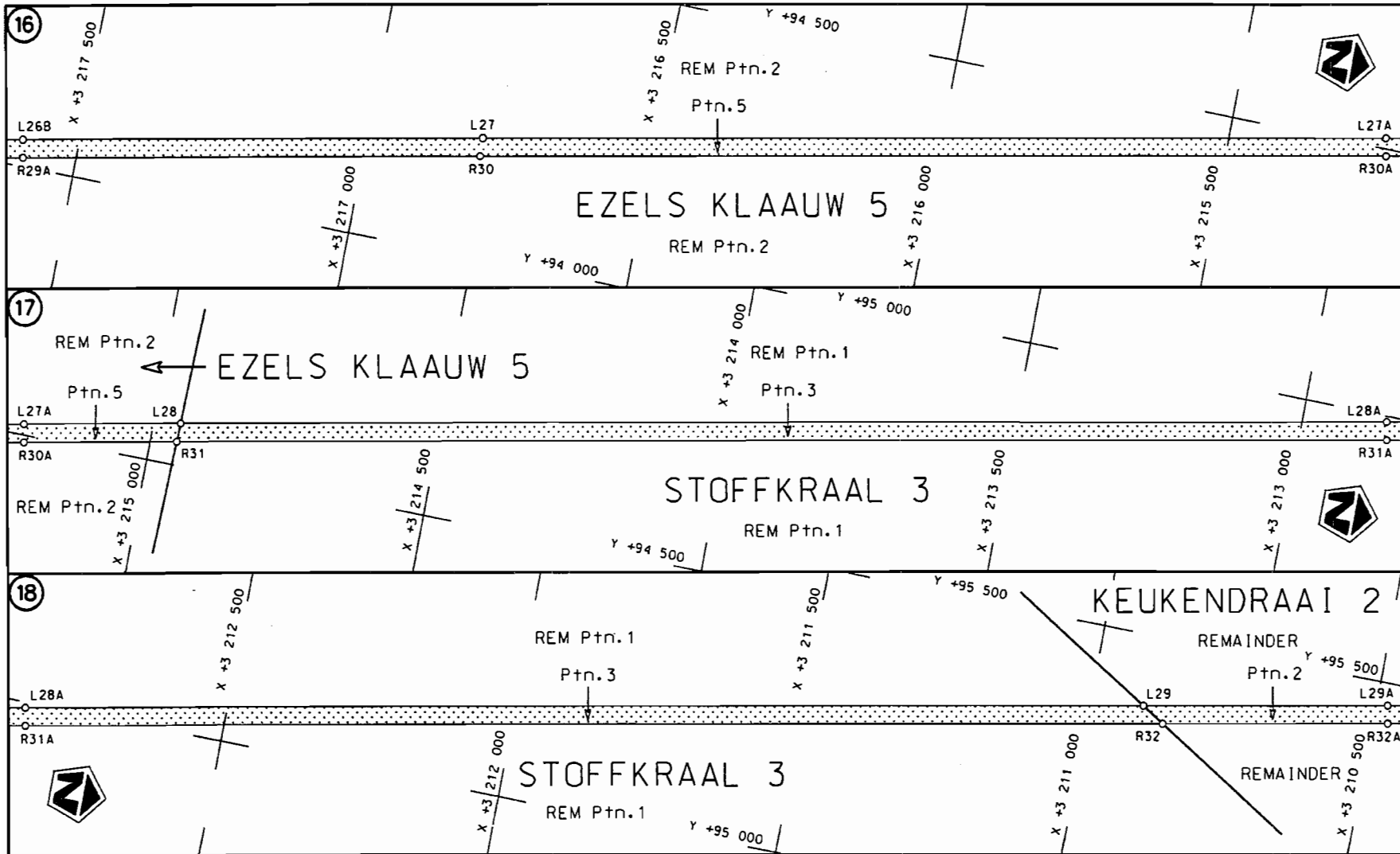


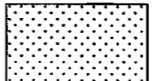
<p>Die Suid Afrikaanse Nasionale Padagentskap Beperk The South African National Roads Agency Limited</p>	<p>Die figuur getoon The figure shown</p>		<p>stel die padreserwe voor van 'n gedeelte represents the road reserve of a portion van Nasionale Roete N10 Seksie of National Route Section</p>	<p>Vel Sheet 4 van of 10 Plan P763/09</p>
--	---	--	---	---

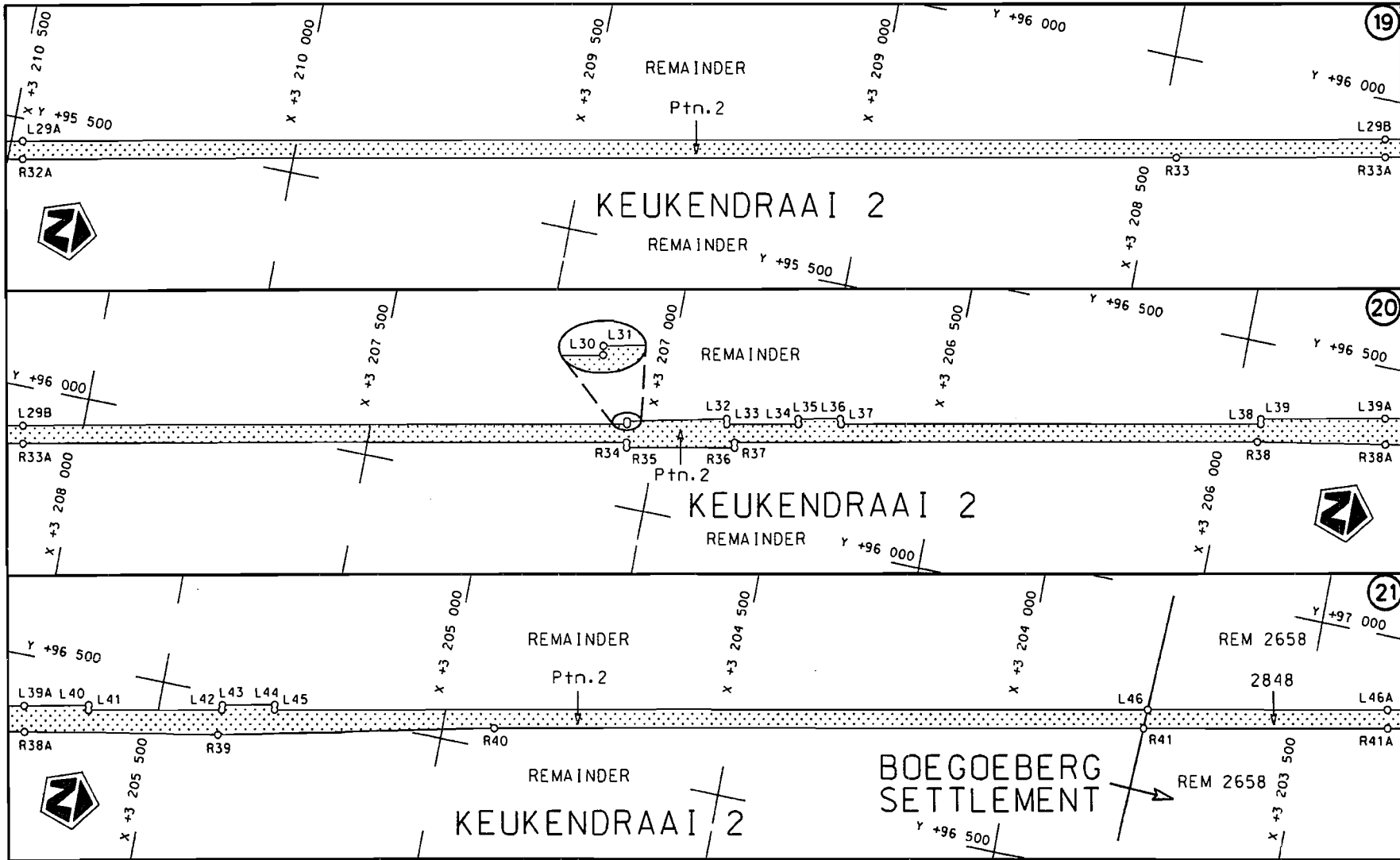




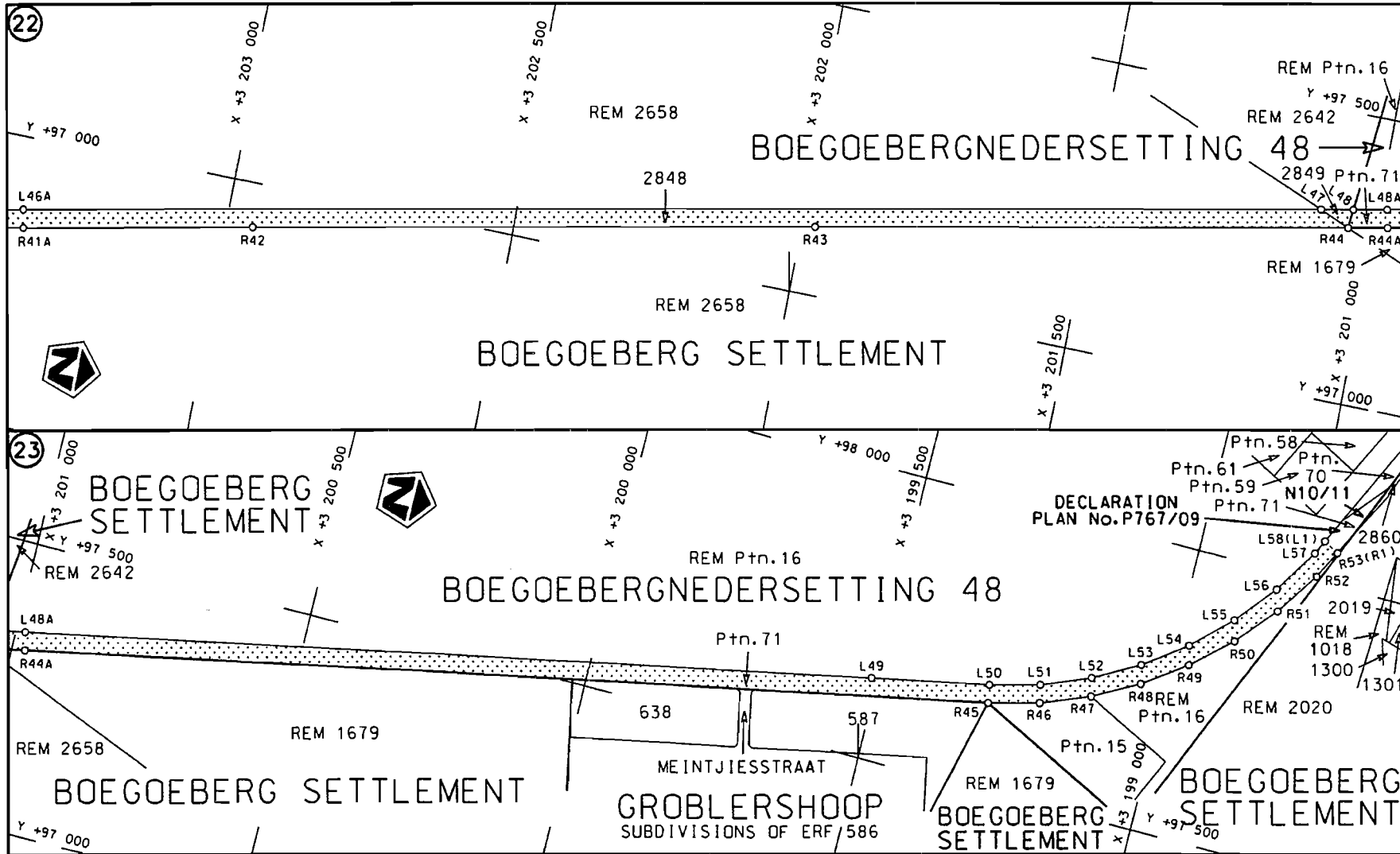
<p>Die Suid Afrikaanse Nasionale Podagentskap Beperk The South African National Roads Agency Limited</p>	<p>Die figuur getoon The figure shown</p>  <p>stelt die padreserwe voor van 'n gedeelte represents the road reserve of a portion van Nasionale Roete N10 of National Route</p>	<p>Vel Sheet 5 of 10 Plan P763/09</p>
--	---	---



<p>Die Suid Afrikaanse Nasionale Padagentskop Beperk The South African National Roads Agency Limited</p>	<p>Die figuur getoon The figure shown</p>		<p>stel die padreserwe voor van 'n gedeelte represents the road reserve of a portion van Nasionale Roete N10 of National Route N10</p> <p>Seksie 10 Section 10</p>	<p>Vel 6 van 10 Sheet 6 of 10</p> <p>Plan P763/09</p>
--	---	--	--	---



<p>Die Suid Afrikaanse Nasionale Padagentskap Beperk The South African National Roads Agency Limited</p>	<p>Die figuur getoon The figure shown</p>	<p>steldie padreserwe voor van 'n gedeelte represents the road reserve of a portion van Nasionale Roete N10 of National Route N10</p> <p>Seksie Section</p> <p>10</p>	<p>Vel Sheet</p> <p>7 van of 10</p> <p>Plon P763/09</p>
--	---	---	---



<p>Die Suid Afrikaanse Nasionale Padagentskop Beperk The South African National Roads Agency Limited</p>	<p>Die figuur getoon The figure shown</p>		<p>stel die padreserwe voor van 'n gedeelte represents the road reserve of a portion van Nasionale Roete N10 of National Route N10</p>	<p>Vel Sheet 8 van 10 of of 10 Plan P763/09</p>
--	---	--	--	---

PADRESERWE KOÖRDINATE				/	ROAD RESERVE CO-ORDINATES				
LINKERKANT/LEFT HAND SIDE					REGTERKANT/RIGHT HAND SIDE				
	Y	X	WG	23°	Y	X			
L1	86 240.250	3 252 536.840		R1	86 207.250	3 252 542.150			
L2	86 272.760	3 252 398.170		R2	86 241.740	3 252 395.820			
L3	86 385.530	3 251 915.600		R3	86 353.310	3 251 915.880			
L4	86 492.420	3 251 470.270		R4	86 450.500	3 251 489.510			
L5	86 498.900	3 251 442.760		R5	86 456.770	3 251 462.100			
L6	86 615.800	3 250 931.700		R6	86 467.140	3 251 421.220			
L7	86 798.090	3 250 151.370		R7	86 583.870	3 250 930.090			
L8	87 089.930	3 248 903.550		R8	86 758.900	3 250 181.180			
L9	87 554.810	3 246 915.410		R9	87 063.730	3 248 878.000			
L10	87 577.480	3 246 818.600		R10	87 540.740	3 246 838.520			
L11	88 203.460	3 244 141.490		R11	88 059.870	3 244 618.460			
L12	88 662.520	3 242 180.980		R12	88 174.610	3 244 128.150			
L13	88 676.840	3 242 119.500		R13	88 287.870	3 243 642.060			
L14	88 775.520	3 241 695.720		R14	88 642.290	3 242 127.860			
L15	88 904.520	3 241 144.730		R15	88 893.720	3 241 052.660			
L16	89 111.230	3 240 259.220		R16	89 544.540	3 238 270.180			
L17	90 146.090	3 235 835.720		R17	89 654.900	3 237 796.760			
L18	90 476.910	3 234 421.720		R18	90 115.700	3 235 828.820			
L19	91 390.080	3 230 516.380		R19	90 441.070	3 234 437.340			
L20	91 505.950	3 230 020.940		R20	91 359.210	3 230 510.240			
L21	91 850.360	3 228 547.760		R21	91 820.950	3 228 535.380			
L22	91 961.410	3 228 070.290		R22	91 931.770	3 228 059.260			
L23	92 063.720	3 227 564.500		R23	92 031.370	3 227 567.020			
L24	92 123.910	3 227 261.830		R24	92 091.430	3 227 265.350			
L25	92 938.880	3 223 163.910		R25	92 614.090	3 224 635.120			
L26	93 282.500	3 221 437.870		R26	93 253.880	3 221 420.900			
L27	94 205.800	3 216 798.330		R27	93 491.820	3 220 224.680			
L28	94 572.710	3 214 952.210		R28	93 595.800	3 219 704.160			
L29	95 376.960	3 210 907.260		R29	93 783.910	3 218 756.920			
L30	96 141.660	3 207 056.330		R30	94 173.990	3 216 797.270			
L31	96 146.810	3 207 057.230		R31	94 540.610	3 214 953.140			
L32	96 185.150	3 206 884.680		R32	95 352.950	3 210 867.180			
L33	96 176.140	3 206 882.790		R33	95 830.420	3 208 465.110			
L34	96 201.050	3 206 757.150		R34	96 110.500	3 207 051.050			
L35	96 209.890	3 206 759.380		R35	96 101.570	3 207 049.350			
L36	96 224.430	3 206 685.800		R36	96 138.710	3 206 861.730			
L37	96 215.920	3 206 682.340		R37	96 147.750	3 206 863.400			
L38	96 361.240	3 205 950.150		R38	96 329.360	3 205 950.370			
L39	96 369.730	3 205 951.780		R39	96 429.680	3 205 386.260			
L40	96 435.780	3 205 622.630		R40	96 535.550	3 204 909.590			
L41	96 426.700	3 205 620.970		R41	96 760.030	3 203 778.820			
L42	96 473.020	3 205 387.490		R42	96 923.730	3 202 952.900			
L43	96 481.960	3 205 388.070		R43	97 118.130	3 201 976.020			
L44	96 500.270	3 205 295.910		R44	97 302.240	3 201 046.310			
L45	96 491.500	3 205 294.350		R45	97 649.480	3 199 299.380			
L46	96 792.520	3 203 777.430		R46	97 672.350	3 199 210.280			
L47	97 323.660	3 201 099.920		R47	97 706.020	3 199 124.800			
L48	97 334.910	3 201 043.290		R48	97 749.410	3 199 044.170			
L49	97 639.680	3 199 509.990		R49	97 802.070	3 198 969.170			
L50	97 680.130	3 199 305.030		R50	97 862.990	3 198 900.580			
L51	97 702.980	3 199 216.920		R51	97 932.260	3 198 839.650			
					Vel	9	Van	10	P763/09
					Sheet		of		

PADRESERWE KOÖRDINATE				/	ROAD RESERVE CO-ORDINATES				
LINKERKANT/LEFT HAND SIDE					REGTERKANT/RIGHT HAND SIDE				
	Y	X	WG	23°	Y	X			
L52	97 737.430	3 199 131.400		R52	98 007.410	3 198 787.270			
L53	97 781.570	3 199 051.270		R53	98 056.780	3 198 761.140			
L54	97 835.470	3 198 976.970							
L55	97 898.170	3 198 909.810							
L56	97 968.450	3 198 850.780							
L57	98 046.170	3 198 800.300							
L58	98 070.640	3 198 787.750							
					Vel	10	Van	10	P763/09
					Sheet		of		