

# Government Gazette Staatskoerant

REPUBLIC OF SOUTH AFRICA  
REPUBLIEK VAN SUID-AFRIKA

Vol. 544

Pretoria, 26 October  
Oktober 2010

**No. 33675**

**IMPORTANT NOTICE**

The Government Printing Works will not be held responsible for faxed documents not received due to errors on the fax machine or faxes received which are unclear or incomplete. Please be advised that an "OK" slip, received from a fax machine, will not be accepted as proof that documents were received by the GPW for printing. If documents are faxed to the GPW it will be the sender's responsibility to phone and confirm that the documents were received in good order.

Furthermore the Government Printing Works will also not be held responsible for cancellations and amendments which have not been done on original documents received from clients.

**CONTENTS****INHOUD**

<i>No.</i>	<i>Page No.</i>	<i>Gazette No.</i>	<i>No.</i>	<i>Bladsy No.</i>	<i>Koerant No.</i>
<b>GOVERNMENT NOTICE</b>			<b>GOEWERMENTSKENNISGEWING</b>		
<b>Transport, Department of</b>			<b>Vervoer, Departement van</b>		
<i>Government Notice</i>			<i>Goewermentskennisgewing</i>		
958			958		
South African National Roads Agency Limited and the National Roads Act (7/1998): The South African National Roads Agency Limited: Declaration Amendment of National Road N18 Section 2: Amendment of Declaration No. 731 of 2005 .....	3	33675	Suid-Afrikaanse Nasionale Padagentskap Beperk en die Nasionale Paaie Wet (7/1998): Die Suid-Afrikaanse Nasionale Padagentskap Beperk: Verklaring Wysiging van Nasionale Pad N18 Seksie 2: Wysiging van Verklaring No. 731 van 2005 .....	4	33675

---

## GOVERNMENT NOTICE

---

### DEPARTMENT OF TRANSPORT

No. 958

26 October 2010

## THE SOUTH AFRICAN NATIONAL ROADS AGENCY LIMITED

Registration No: 98/09584/06

---

### DECLARATION AMENDMENT OF NATIONAL ROAD N18 SECTION 2

#### AMENDMENT OF DECLARATION NO. 731 OF 2005

By virtue of section 40(1)(b) of the South African National Roads Agency Limited and the National Roads Act, 1998 (Act No. 7 of 1998), I hereby amend Declaration No. 731 of 2005 by substituting the Annexure paragraph (I), the descriptive section from the Northern Cape border up to Pudumong, with the subjoined sheets 1 to 6 of Plan No. P746/09.

**(National Road N18 Section 2: Northern Cape border - Pudumong)**

  
MINISTER OF TRANSPORT

---

## GOEWERMENTSKENNISGEWING

---

### DEPARTEMENT VAN VERVOER

No. 958

26 Oktober 2010

## DIE SUID-AFRIKAANSE NASIONALE PADAGENTSKAP BEPERK

Registrasie No: 98/09584/06

---

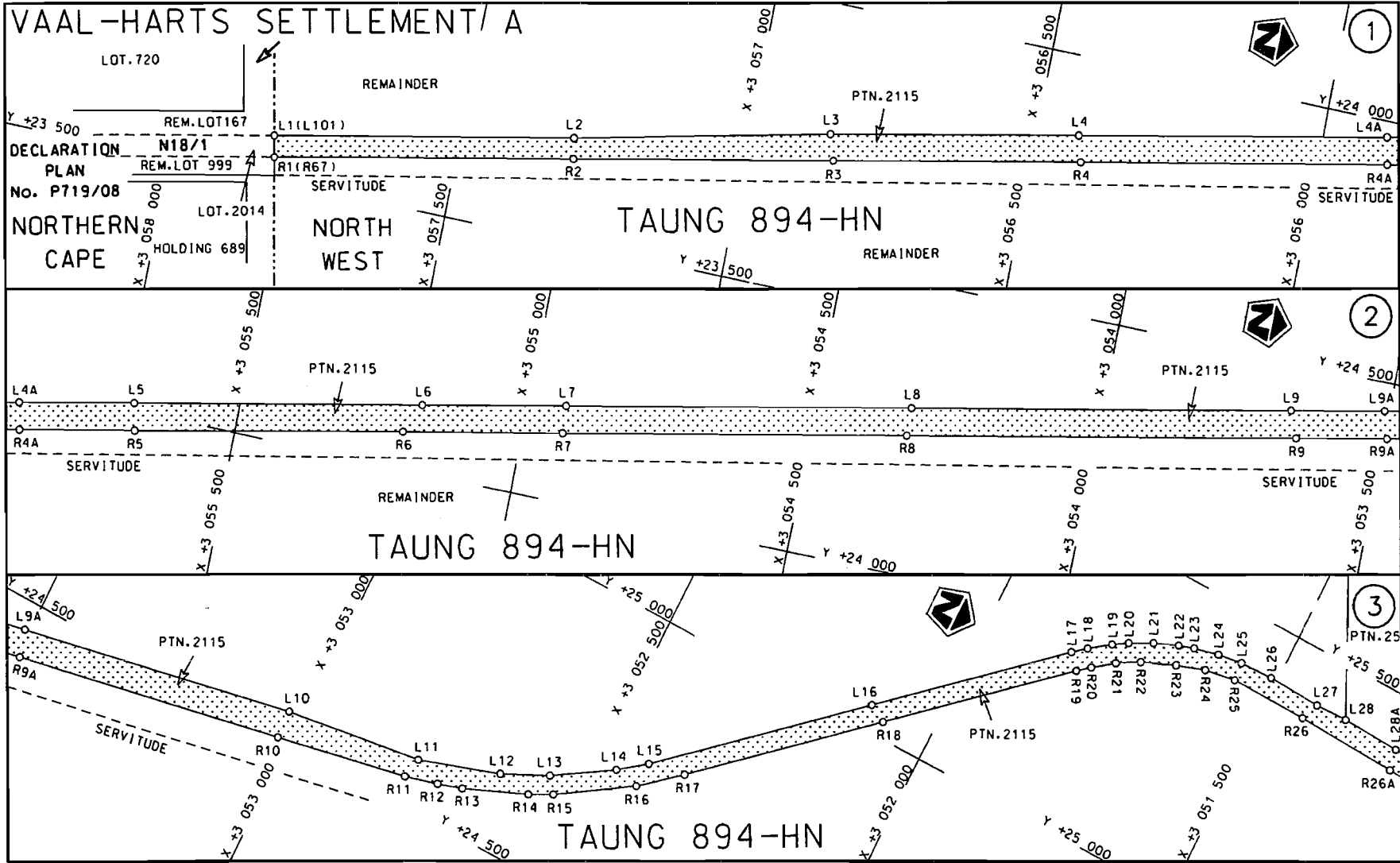
### VERKLARING WYSIGING VAN NASIONALE PAD N18 SEKSIE 2

#### WYSIGING VAN VERKLARING NO. 731 VAN 2005

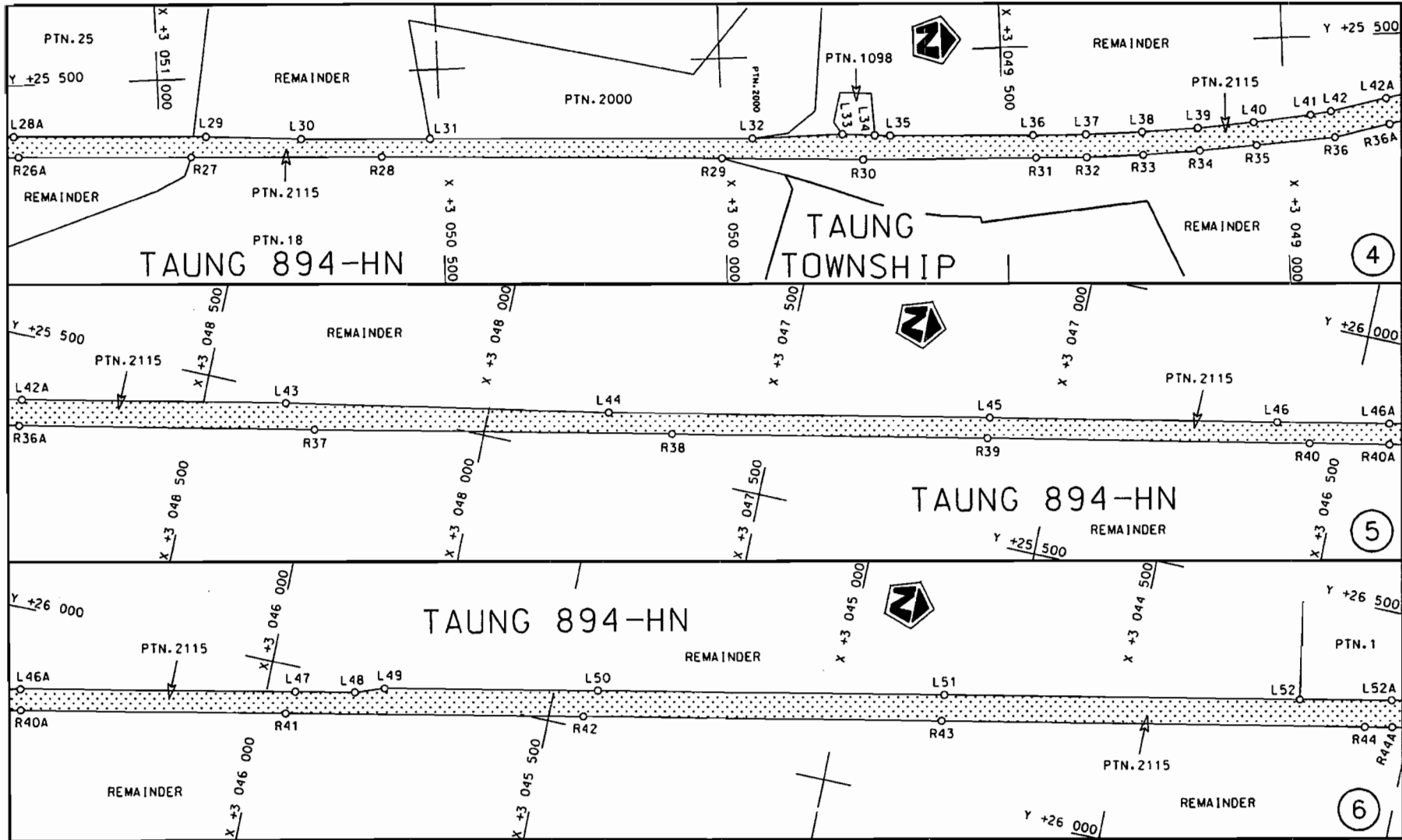
Kragtens Artikel 40(1)(b) van die Suid-Afrikaanse Nasionale Padagentskap Beperk en die Nasionale Paaie Wet, 1998 (Wet no.7 van 1998), wysig ek hiermee Verklaring no. 731 van 2005 deur die Bylae paragraaf (l), die beskrywende gedeelte vanaf die Noord Kaap grens tot by Pudumong, te vervang met meegaande velle 1 tot 6 van Plan no. P746/09.


**(Nasionale Pad N18 Seksie 2 Noord Kaap grens - Pudumong)**

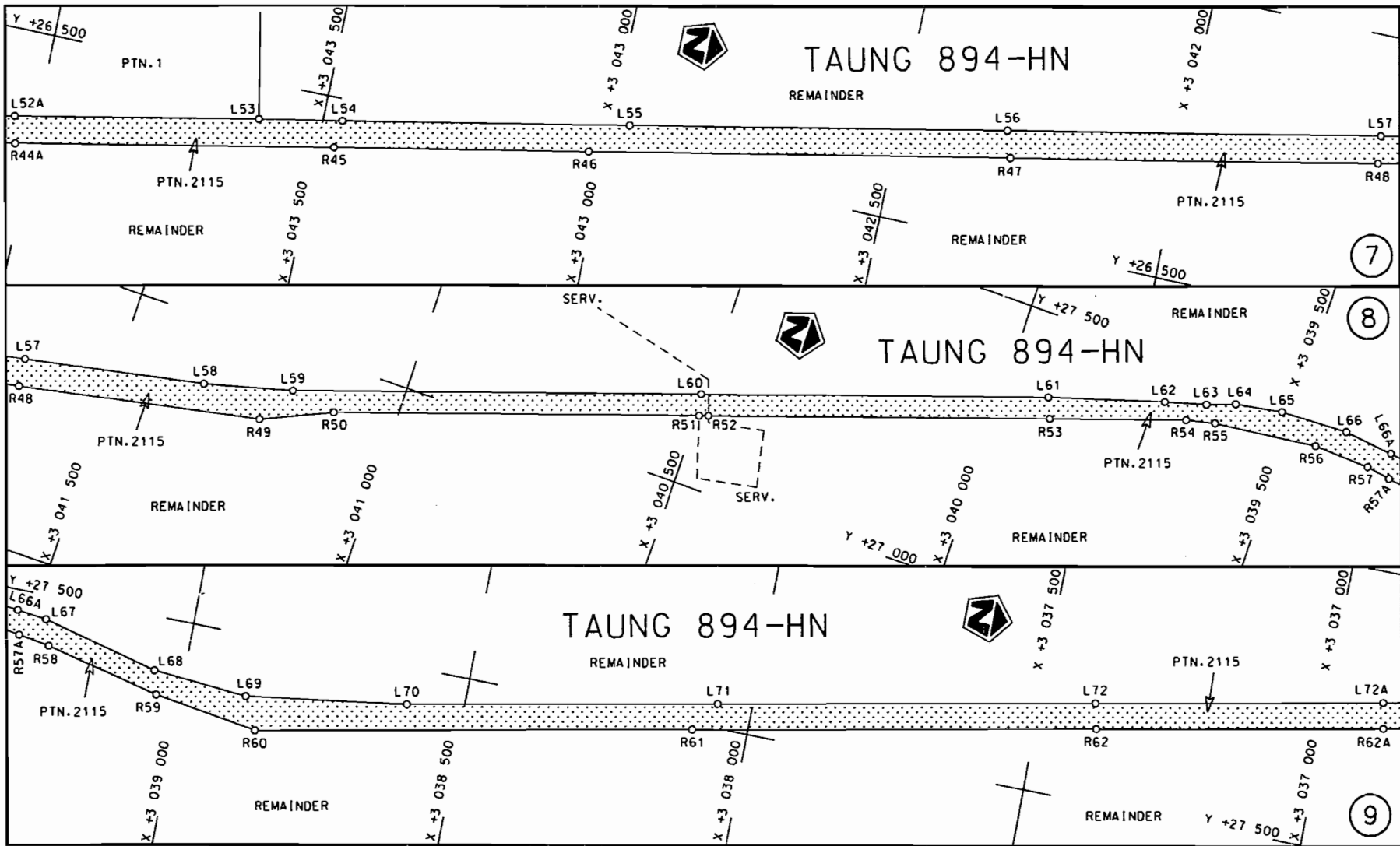
  
**MINISTER VAN VERVOER**




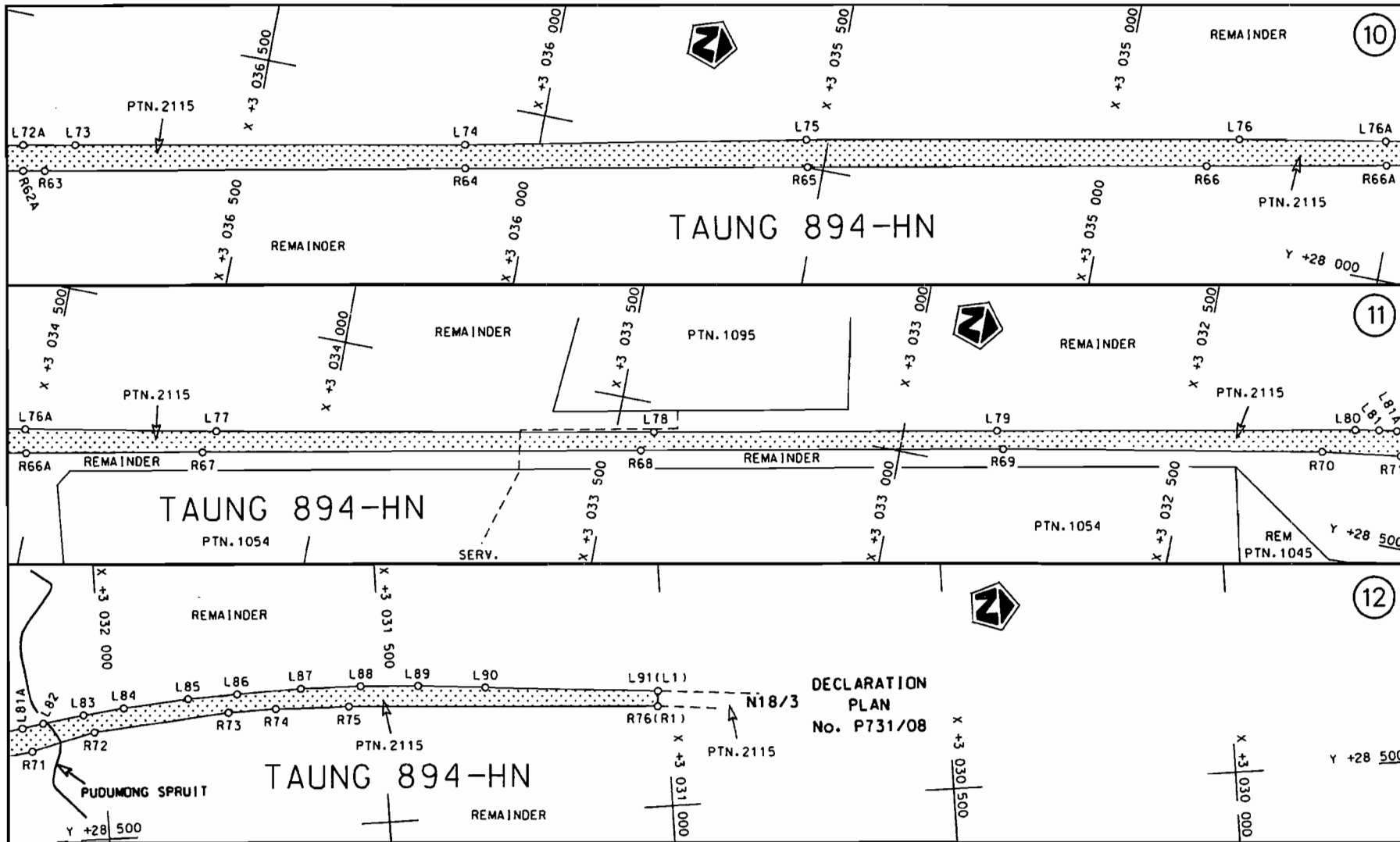
<p>Die Suid Afrikaanse Nasionale Padagentskap Beperk The South African National Roads Agency Limited</p>	<p>Die figuur getoon The figure shown</p>		<p>steldie padreserwe voor van 'n gedeelte represents the road reserve of a portion van Nasionale Roete N18 Seksie of National Route Section</p>	<p>2</p>	<p>Vel Sheet 1 van 6 Plan P746/09</p>
--	---	--	--	----------	---



<p>Die Suid Afrikaanse Nasionale Padagentskap Beperk The South African National Roads Agency Limited</p>	<p>Die figuur getoon The figure shown</p>		<p>steldie padreserwe voor van 'n gedeelte represents the road reserve of a portion van Nasionale Roete N18 of National Route N18</p> <p>Seksie Section</p> <p>2</p>	<p>Vel Sheet</p> <p>2 van of 6</p> <p>Plan P746/09</p>
--	---	--	--	--



Die Suid Afrikaanse Nasionale Padagentskap Beperk The South African National Roads Agency Limited	Die figuur getoon The figure shown		steldie padreserwe voor van 'n gedeelte represents the road reserve of a portion van Nasionale Roete N18 Seksie Section of National Route N18 Section 2	Vel Sheet 3 van of 6 Plan P746/09
--	---------------------------------------	--	--	--------------------------------------



<p>Die Suid Afrikaanse Nasionale Padagentskap Beperk</p>	<p>Die figuur getoon</p>	<p>steldie padreserwe voor van 'n gedeelte</p>	<p>Vel Sheet 4 van of 6</p>
<p>The South African National Roads Agency Limited</p>	<p>The figure shown</p>	<p>represents the road reserve of a portion van Nasionale Roete N18 Seksie Section 2</p>	<p>Plan P746/09</p>



PADRESERWE KOÖRDINATE / ROAD RESERVE CO-ORDINATES						
LINKERKANT/LEFT HAND SIDE				REGTERKANT/RIGHT HAND SIDE		
	Y	X	WG 25°		Y	X
L1	23 575.510	3 057 824.310		R1	23 539.880	3 057 817.170
L2	23 679.820	3 057 303.770		R2	23 644.350	3 057 297.670
L3	23 778.600	3 056 859.170		R3	23 734.990	3 056 845.000
L4	23 865.590	3 056 426.120		R4	23 821.170	3 056 413.370
L5	24 014.160	3 055 686.020		R5	23 967.400	3 055 675.750
L6	24 114.640	3 055 182.820		R6	24 062.330	3 055 207.290
L7	24 165.280	3 054 933.770		R7	24 117.970	3 054 930.120
L8	24 286.180	3 054 332.190		R8	24 238.120	3 054 331.130
L9	24 418.790	3 053 671.160		R9	24 374.020	3 053 653.120
L10	24 548.930	3 053 023.430		R10	24 500.320	3 053 021.660
L11	24 582.900	3 052 783.630		R11	24 546.420	3 052 791.800
L12	24 629.730	3 052 644.470		R12	24 562.490	3 052 734.380
L13	24 668.380	3 052 565.660		R13	24 575.870	3 052 692.220
L14	24 731.730	3 052 466.910		R14	24 621.730	3 052 584.540
L15	24 767.770	3 052 420.910		R15	24 642.300	3 052 545.600
L16	25 042.830	3 052 117.070		R16	24 723.780	3 052 422.900
L17	25 289.180	3 051 845.810		R17	24 781.120	3 052 356.400
L18	25 308.420	3 051 823.530		R18	25 026.540	3 052 086.090
L19	25 334.770	3 051 788.310		R19	25 265.050	3 051 823.580
L20	25 350.400	3 051 763.700		R20	25 282.840	3 051 802.850
L21	25 371.190	3 051 724.970		R21	25 309.460	3 051 767.750
L22	25 388.480	3 051 683.000		R22	25 331.810	3 051 729.920
L23	25 397.090	3 051 656.390		R23	25 356.470	3 051 671.500
L24	25 407.510	3 051 613.570		R24	25 373.770	3 051 621.900
L25	25 413.960	3 051 570.250		R25	25 382.550	3 051 567.340
L26	25 416.150	3 051 511.880		R26	25 381.340	3 051 431.040
L27	25 412.460	3 051 418.230		R27	25 363.750	3 050 944.670
L28	25 414.560	3 051 361.960		R28	25 351.230	3 050 603.320
L29	25 398.540	3 050 916.510		R29	25 326.370	3 050 002.100
L30	25 388.080	3 050 746.700		R30	25 314.240	3 049 749.670
L31	25 379.990	3 050 517.440		R31	25 306.040	3 049 442.690
L32	25 359.670	3 049 946.090		R32	25 303.660	3 049 352.720
L33	25 360.450	3 049 784.830		R33	25 304.310	3 049 252.920
L34	25 356.380	3 049 727.110		R34	25 308.540	3 049 151.960
L35	25 354.770	3 049 700.120		R35	25 314.860	3 049 051.030
L36	25 345.810	3 049 446.500		R36	25 323.340	3 048 911.200
L37	25 343.790	3 049 352.500		R37	25 446.360	3 048 296.060
L38	25 344.710	3 049 253.280		R38	25 572.120	3 047 673.710
L39	25 347.960	3 049 153.810		R39	25 682.750	3 047 124.620
L40	25 354.540	3 049 054.620		R40	25 795.310	3 046 563.020
L41	25 364.110	3 048 953.510		R41	25 915.490	3 045 959.090
L42	25 368.600	3 048 916.810		R42	26 019.870	3 045 439.880
L43	25 481.080	3 048 355.560		R43	26 145.170	3 044 816.290
L44	25 585.220	3 047 791.170		R44	26 292.150	3 044 077.740
L45	25 719.030	3 047 128.060		R45	26 413.720	3 043 471.160
L46	25 819.730	3 046 626.940		R46	26 502.160	3 043 029.910
L47	25 956.430	3 045 950.090		R47	26 649.230	3 042 296.190
L48	25 977.420	3 045 845.340		R48	26 777.810	3 041 654.870
L49	25 995.110	3 045 794.620		R49	26 863.050	3 041 229.630
L50	26 069.580	3 045 424.250		R50	26 917.880	3 041 107.320
L51	26 191.010	3 044 821.260		R51	27 124.480	3 040 496.540

Vel	5	Van	6	P746/09
Sheet		of		

PADRESERWE KOÖRDINATE / ROAD RESERVE CO-ORDINATES						
LINKERKANT/LEFT HAND SIDE				REGTERKANT/RIGHT HAND SIDE		
	Y	X	WG 25°		Y	X
L52	26 315.540	3 044	201.560	R52	27 129.760	3 040 480.720
L53	26 433.730	3 043	613.320	R53	27 324.110	3 039 905.990
L54	26 461.940	3 043	466.580	R54	27 401.730	3 039 675.980
L55	26 561.950	3 042	968.670	R55	27 413.030	3 039 625.750
L56	26 695.150	3 042	310.950	R56	27 433.120	3 039 444.340
L57	26 826.000	3 041	659.620	R57	27 429.090	3 039 344.660
L58	26 889.300	3 041	344.340	R58	27 413.340	3 039 245.920
L59	26 930.410	3 041	188.070	R59	27 365.340	3 039 042.630
L60	27 161.420	3 040	505.150	R60	27 337.700	3 038 857.040
L61	27 358.980	3 039	920.220	R61	27 488.870	3 038 096.930
L62	27 419.400	3 039	722.050	R62	27 629.360	3 037 392.300
L63	27 439.280	3 039	650.650	R63	27 736.500	3 036 854.460
L64	27 456.940	3 039	602.170	R64	27 882.780	3 036 121.460
L65	27 470.460	3 039	520.760	R65	28 000.830	3 035 528.140
L66	27 474.710	3 039	399.860	R66	28 138.960	3 034 833.960
L67	27 458.070	3 039	259.540	R67	28 262.350	3 034 214.110
L68	27 406.130	3 039	053.550	R68	28 413.760	3 033 451.340
L69	27 393.510	3 038	884.310	R69	28 538.260	3 032 822.010
L70	27 434.860	3 038	600.760	R70	28 641.950	3 032 267.240
L71	27 542.310	3 038	061.380	R71	28 661.430	3 032 128.500
L72	27 673.540	3 037	402.060	R72	28 688.470	3 032 015.130
L73	27 791.600	3 036	809.400	R73	28 708.940	3 031 776.200
L74	27 923.750	3 036	129.690	R74	28 710.580	3 031 692.100
L75	28 048.090	3 035	539.370	R75	28 706.880	3 031 560.680
L76	28 196.520	3 034	786.210	R76	28 675.830	3 031 019.860
L77	28 303.130	3 034	197.200			
L78	28 449.810	3 033	434.710			
L79	28 567.900	3 032	838.990			
L80	28 690.960	3 032	217.270			
L81	28 698.450	3 032	175.400			
L82	28 709.470	3 032	106.080			
L83	28 719.580	3 032	032.730			
L84	28 727.850	3 031	960.800			
L85	28 737.150	3 031	846.320			
L86	28 740.520	3 031	759.000			
L87	28 743.440	3 031	644.960			
L88	28 741.210	3 031	537.240			
L89	28 735.660	3 031	436.070			
L90	28 726.330	3 031	318.130			
L91	28 702.330	3 031	017.280			

Vel 6  
Sheet of

Van 6  
of

P746/09