

Government Gazette

Staatskoerant

REPUBLIC OF SOUTH AFRICA
REPUBLIEK VAN SUID-AFRIKA

Vol. 545

Pretoria, 12 November 2010

No. 33701

IMPORTANT NOTICE

The Government Printing Works will not be held responsible for faxed documents not received due to errors on the fax machine or faxes received which are unclear or incomplete. Please be advised that an "OK" slip, received from a fax machine, will not be accepted as proof that documents were received by the GPW for printing. If documents are faxed to the GPW it will be the sender's responsibility to phone and confirm that the documents were received in good order.

Furthermore the Government Printing Works will also not be held responsible for cancellations and amendments which have not been done on original documents received from clients.

CONTENTS**INHOUD**

<i>No.</i>	<i>Page No.</i>	<i>Gazette No.</i>	<i>No.</i>	<i>Bladsy No.</i>	<i>Koerant No.</i>
GOVERNMENT NOTICE			GOEWERMENSKENNISGEWING		
Transport, Department of			Vervoer, Departement van		
<i>Government Notice</i>			<i>Goewermentskennisgewing</i>		
989			989		
South African National Roads Agency Limited and the National Roads Act (7/1998): The South African National Roads Agency Limited: Declaration amendment of National Road R510 Section 3: Amendment of Declaration No. 1230 of 2004	3	33701	Suid-Afrikaanse Nasionale Padagentskap Beperk en die Nasionale Paaie Wet (7/1998): Die Suid-Afrikaanse Nasionale Padagentskap Beperk: Verklaring wysiging van Nasionale Pad R510 Seksie 3 Wysiging van Verklaring No. 1230 van 2004	4	33701

GOVERNMENT NOTICE

DEPARTMENT OF TRANSPORT

No. 989

12 November 2010

**THE SOUTH AFRICAN NATIONAL ROADS
AGENCY LIMITED**Registration No: 98/09584/06

DECLARATION AMENDMENT OF NATIONAL ROAD R510 SECTION 3

AMENDMENT OF DECLARATION No. 1230 OF 2004

By virtue of section 40(1)(b) of the South African National Roads Agency Limited and the National Roads Act, 1998 (Act No. 7 of 1998), I hereby amend Declaration No. 1230 of 2004, by substituting the section of the descriptive declaration from Thabazimbi up to Lephalale (Ellisras), in paragraphs (I), (II) and (III) of the Annexure, with the subjoined sheets 1 to 30 of Plan P755/09.

[National Road R510 Section 3: Thabazimbi – Lephalale (Ellisras)]

MINISTER OF TRANSPORT

GOEWERMENSKENNISGEWING

DEPARTEMENT VAN VERVOER

No. 989

12 November 2010

DIE SUID-AFRIKAANSE NASIONALE PADAGENTSKAP BEPERK

Registrasie No: 98/09584/06

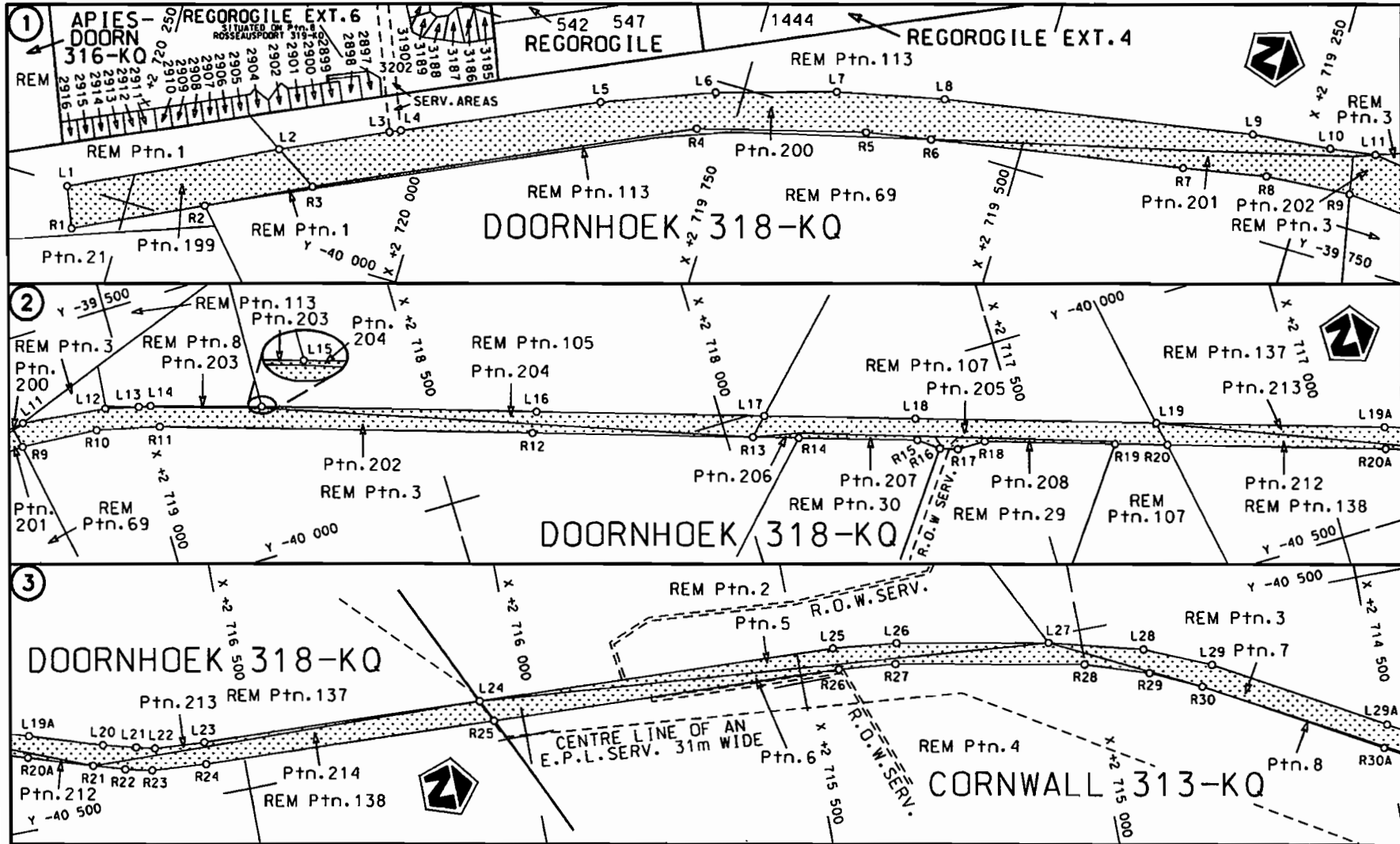
VERKLARING WYSIGING VAN NASIONALE PAD R510 SEKSIE 3.


WYSIGING VAN VERKLARING NO. 1230 VAN 2004

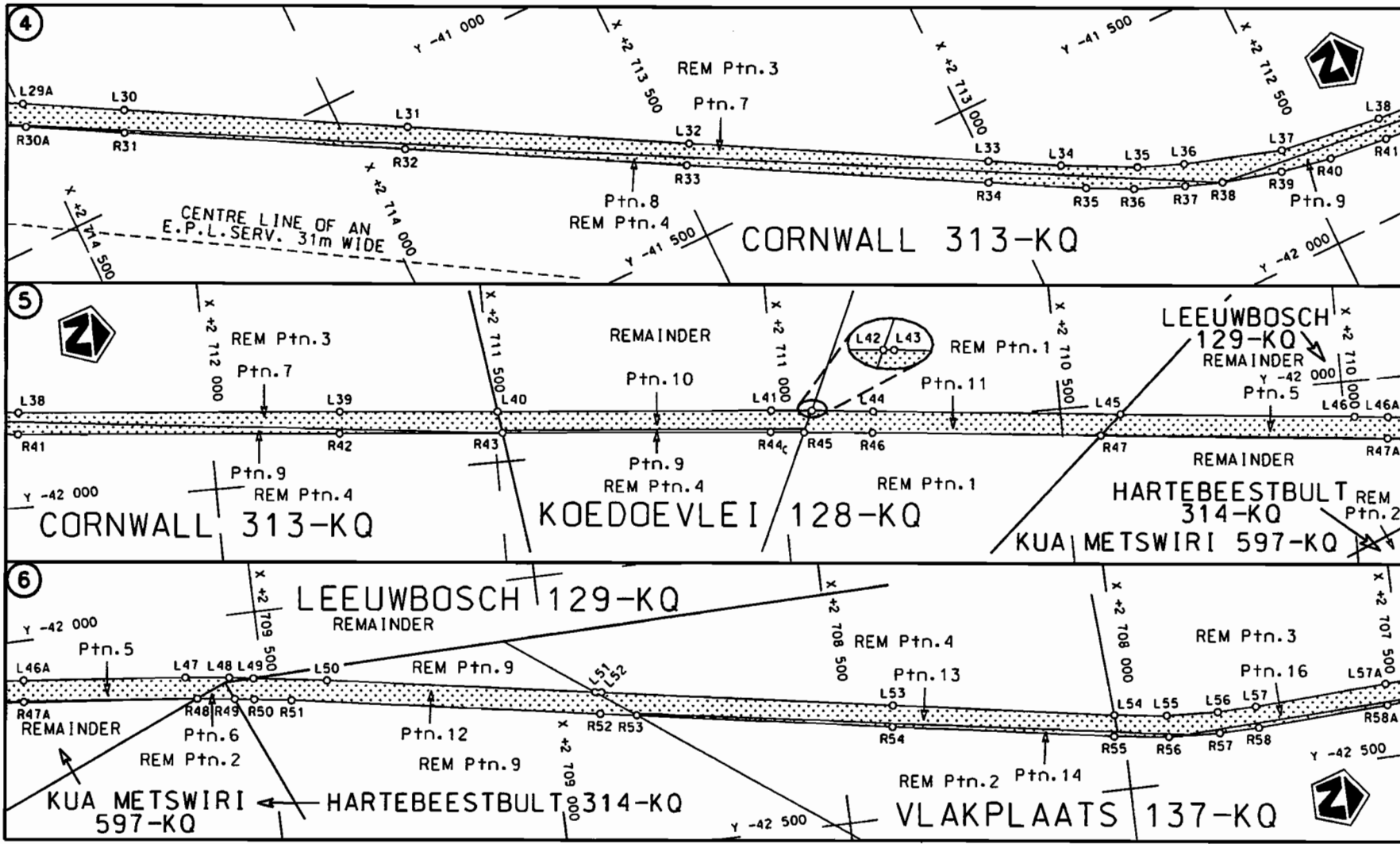
Kragtens Artikel 40(1)(b) van die Suid Afrikaanse Nasionale Padagentskap Beperk en die Nasionale Paaie Wet, 1998 (Wet no.7 van 1998), wysig ek hiermee Verklaring no.1230 van 2004, deur die gedeelte van die beskrywende verklaring vanaf Thabazimbi tot by Lephale (Ellisras) in paragrawe (I), (I) en (III) van die bylae, te vervang met meegaande velle 1 tot 30 van Plan no. P755/09.

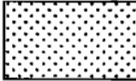
[Nasionale Pad R510 Seksie 3: Thabazimbi – Lephale (Ellisras)]

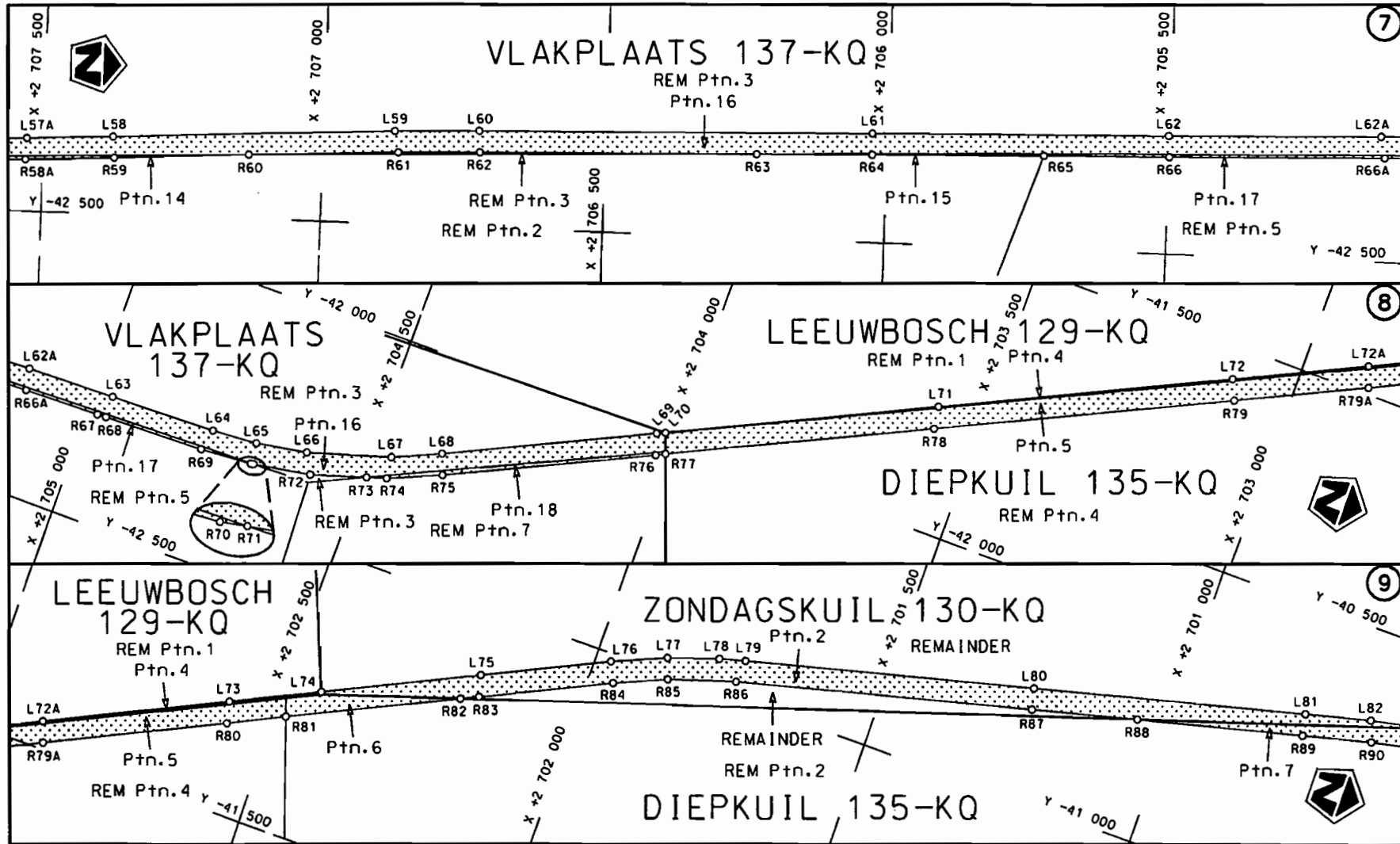

MINISTER VAN VERVOER




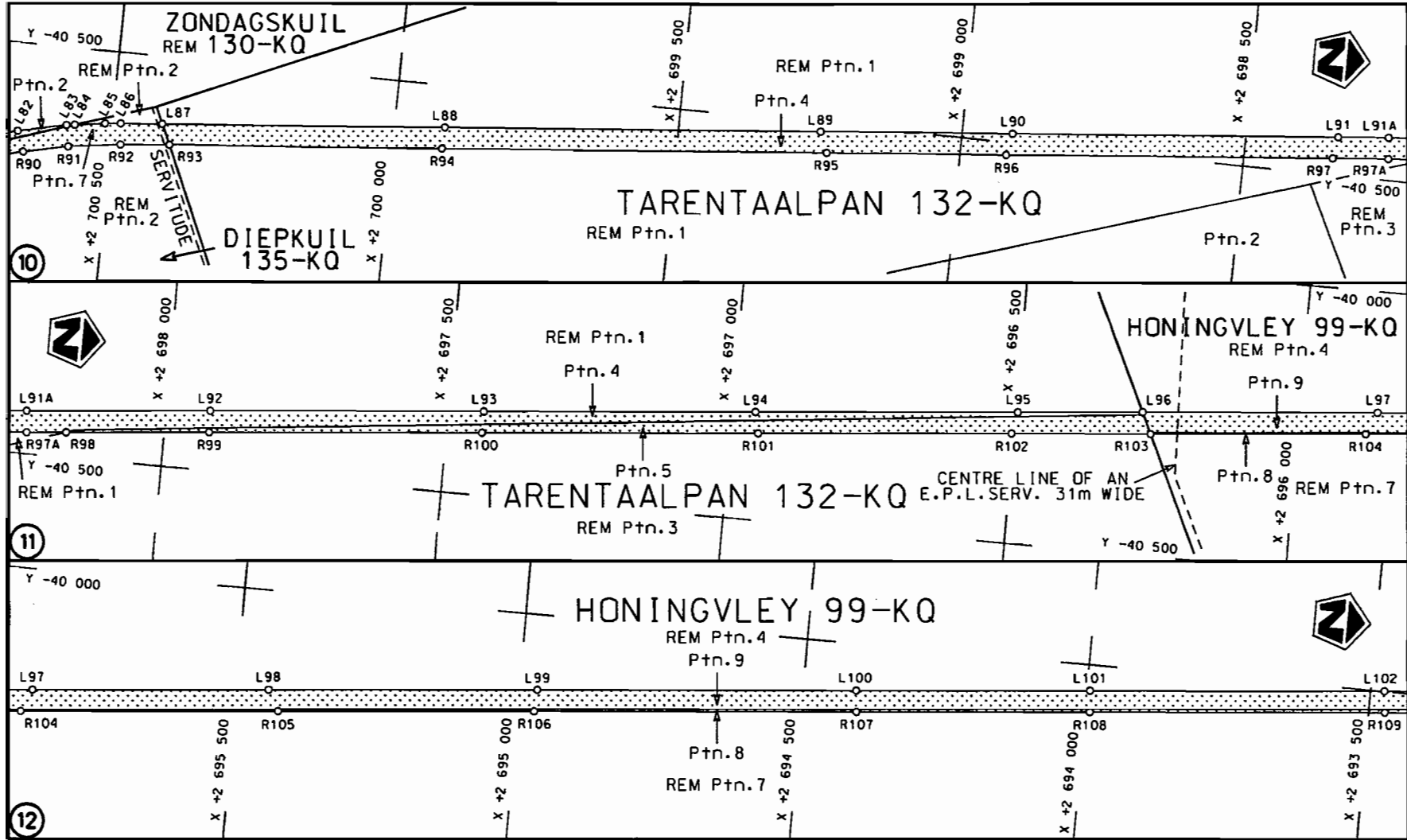
Die Suid Afrikaanse Nasionale Padogentskap Beperk The South African National Roads Agency Limited	Die figuur getoon The figure shown	 steldie padreserwe voor van 'n gedeelte represents the road reserve of a portion van Nasionale Roete R510 Seksie Section of National Route 3	Vel Sheet 1 van of 30 Plan P755/09
--	---------------------------------------	---	---------------------------------------

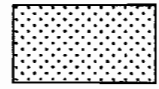


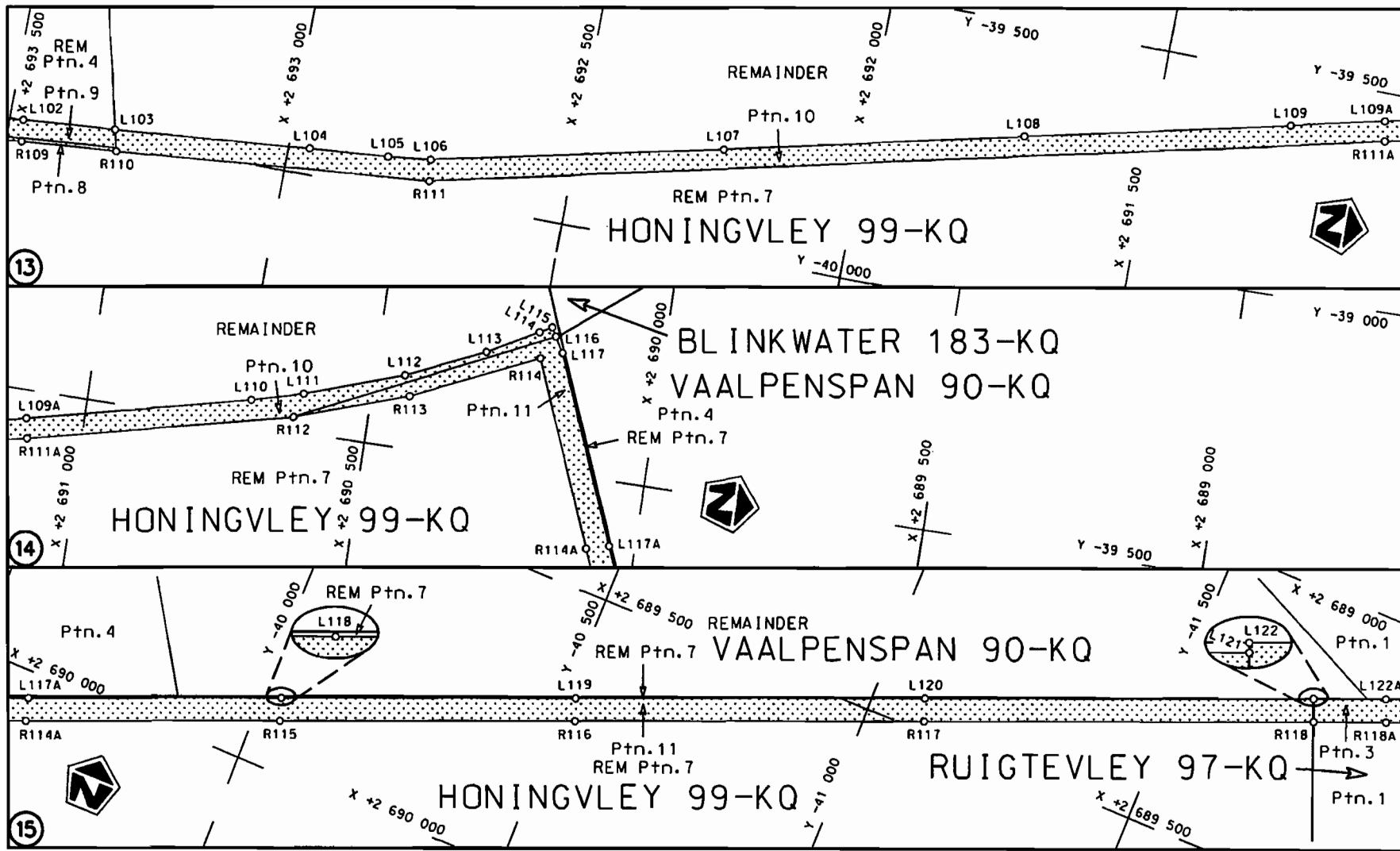
<p>Die Suid Afrikaanse Nasionale Padagentskap Beperk The South African National Roads Agency Limited</p>	<p>Die figuur getoon The figure shown</p> 	<p>steldie padreserwe voor van 'n gedeelte represents the road reserve of a portion von Nasionale Roete of National Route</p> <p>R510</p> <p>Seksie Section</p> <p>3</p>	<p>Vel Sheet</p> <p>2 van of 30</p> <p>Plan P755/09</p>
--	---	--	---




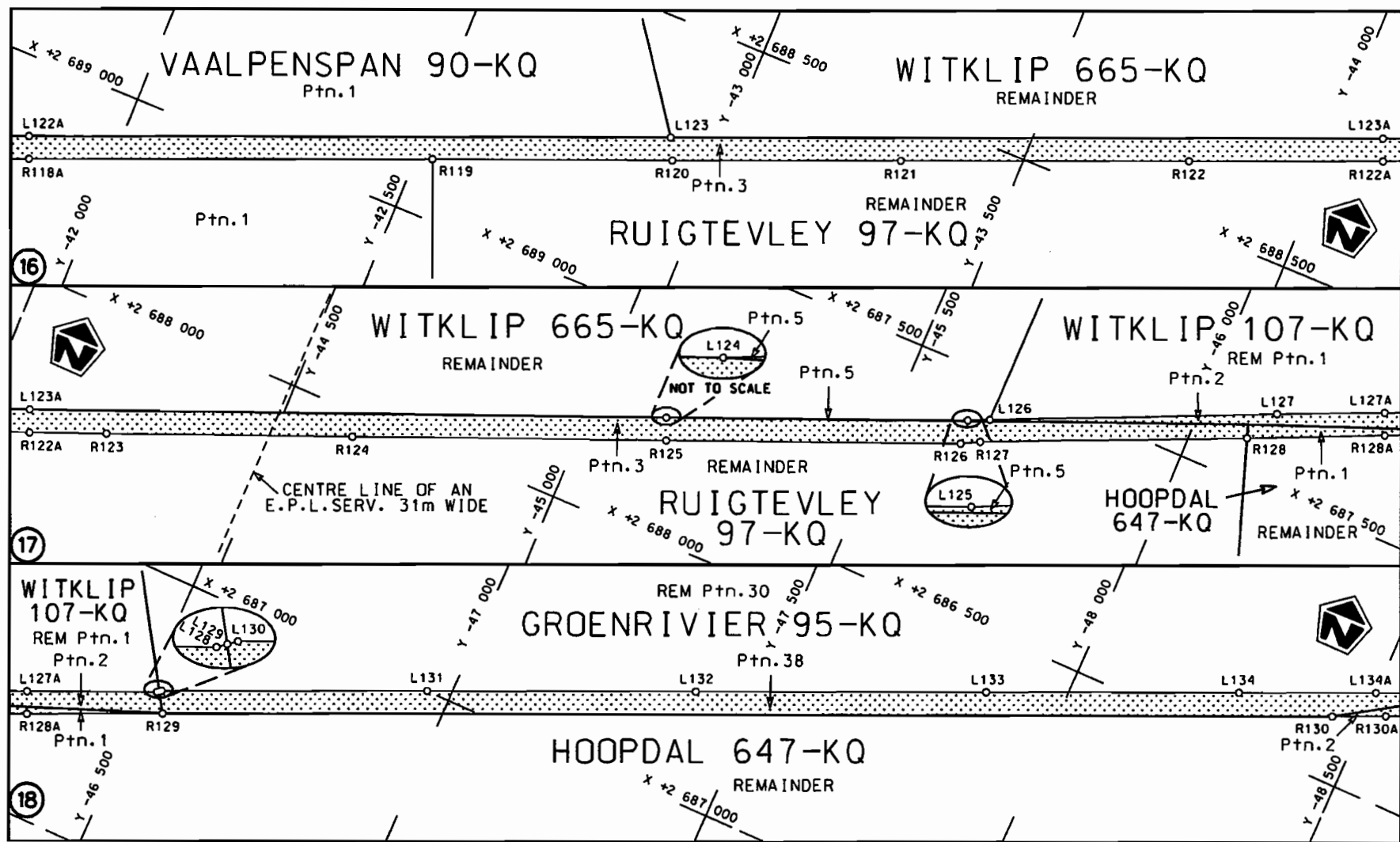
<p>Die Suid Afrikaanse Nasionale Padagentskap Beperk The South African National Roads Agency Limited</p>	<p>Die figuur getoon The figure shown</p> 	<p>steldie padreserwe voor van 'n gedeelte represents the road reserve of a portion van Nasionale Roete of National Route R510</p> <p>Seksie Section 3</p>	<p>Vel Sheet 3 van of 30 Plan P755/09</p>
--	---	--	---

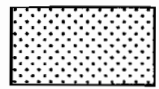


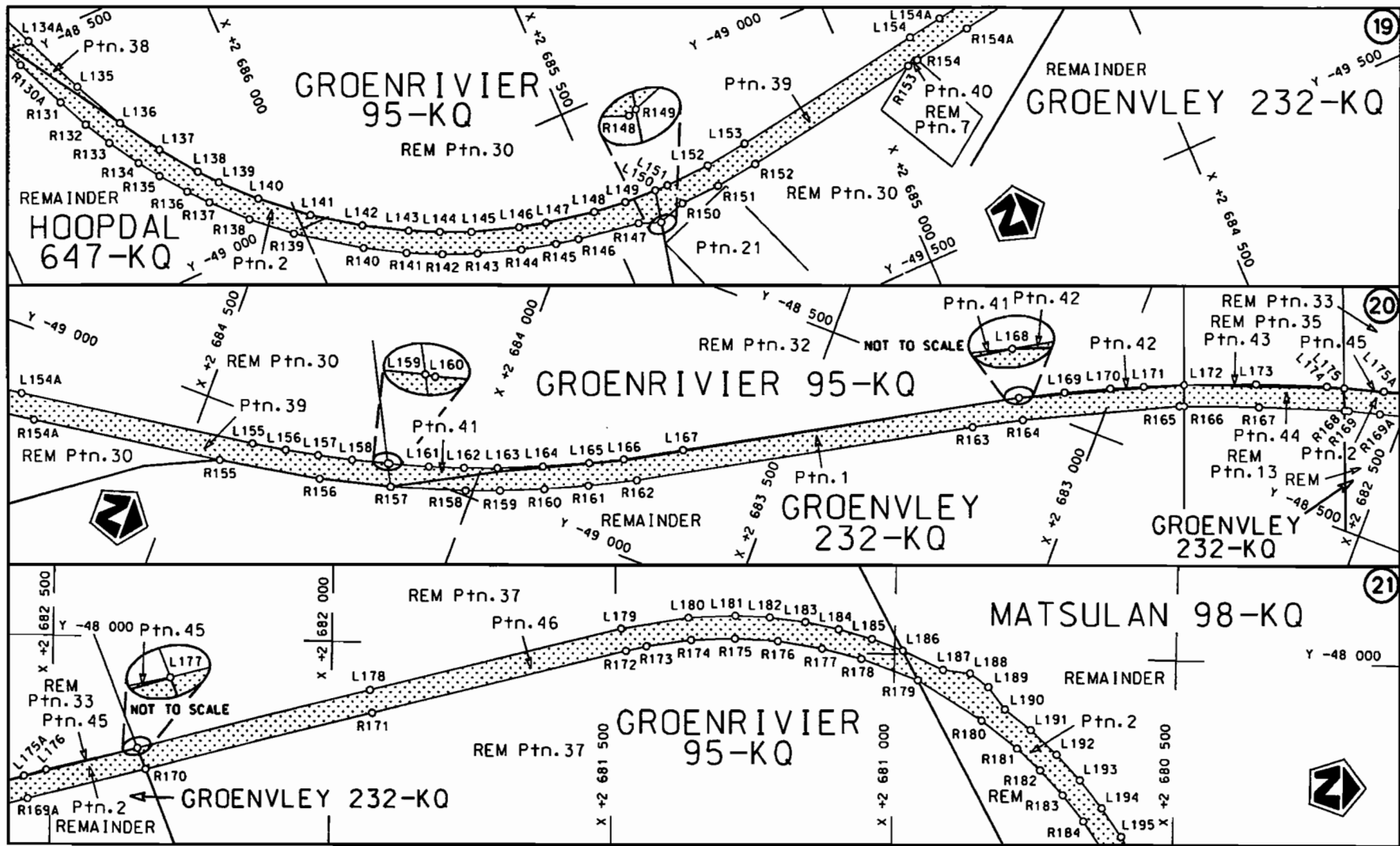
<p>Die Suid Afrikaanse Nasionale Padagentskap Beperk The South African National Roads Agency Limited</p>	<p>Die figuur getoon The figure shown</p>		<p>steldie padreserwe voor van 'n gedeelte represents the road reserve of a portion van Nasionale Roete R510 of National Route R510</p> <p>Seksie 3 Section 3</p>	<p>Vel Sheet 4 von of 30 Plan P755/09</p>
--	---	---	---	---




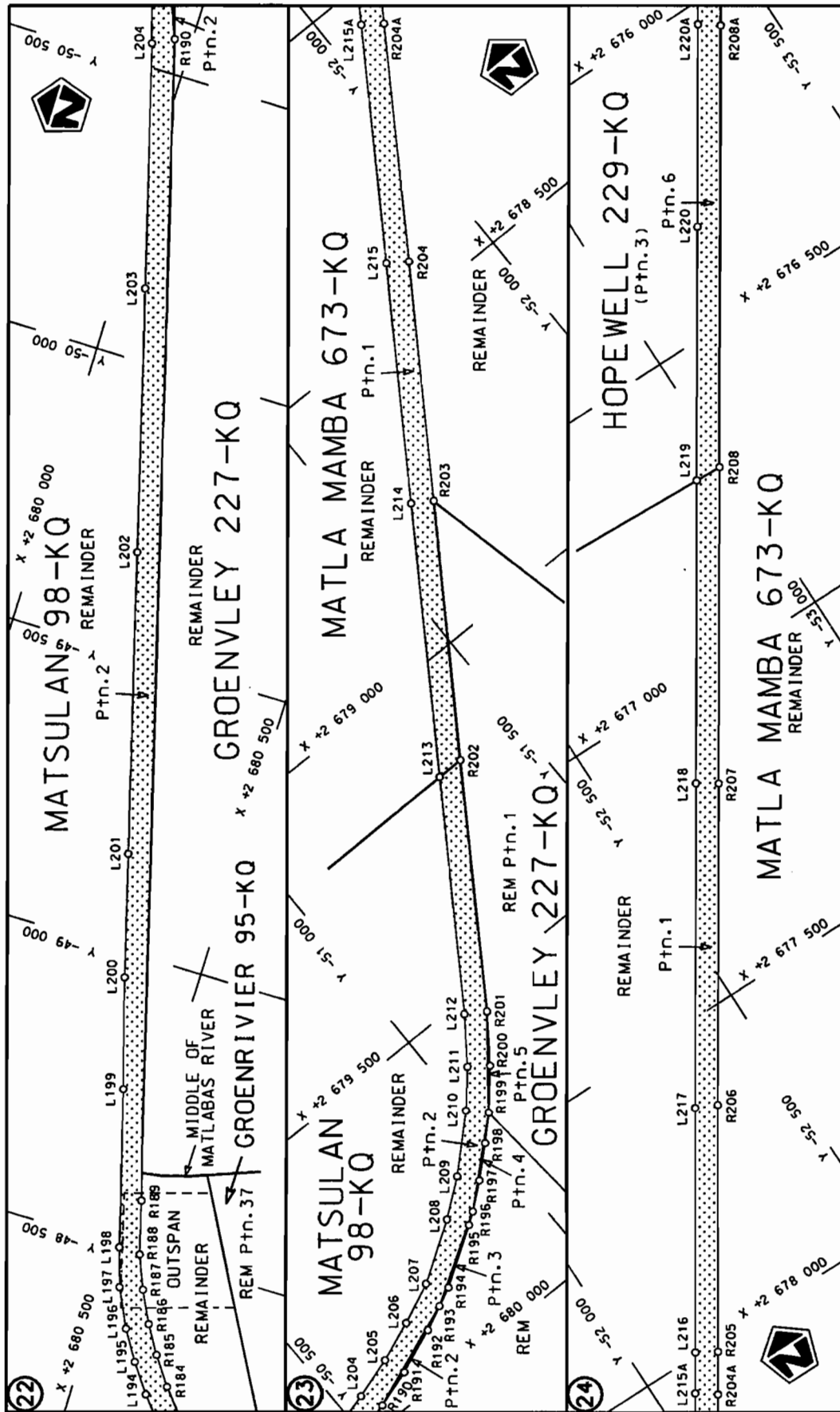
Die Suid Afrikaanse Nasionale Padagentskap Beperk The South African National Roads Agency Limited	Die figuur getoon The figure shown	 steldie padreserwe voor van 'n gedeelte represents the road reserve of a portion van Nasionale Roete R510 Seksie of National Route R510 Section	Vel Sheet 5 van of 30 Plan P755/09
--	---------------------------------------	--	---------------------------------------



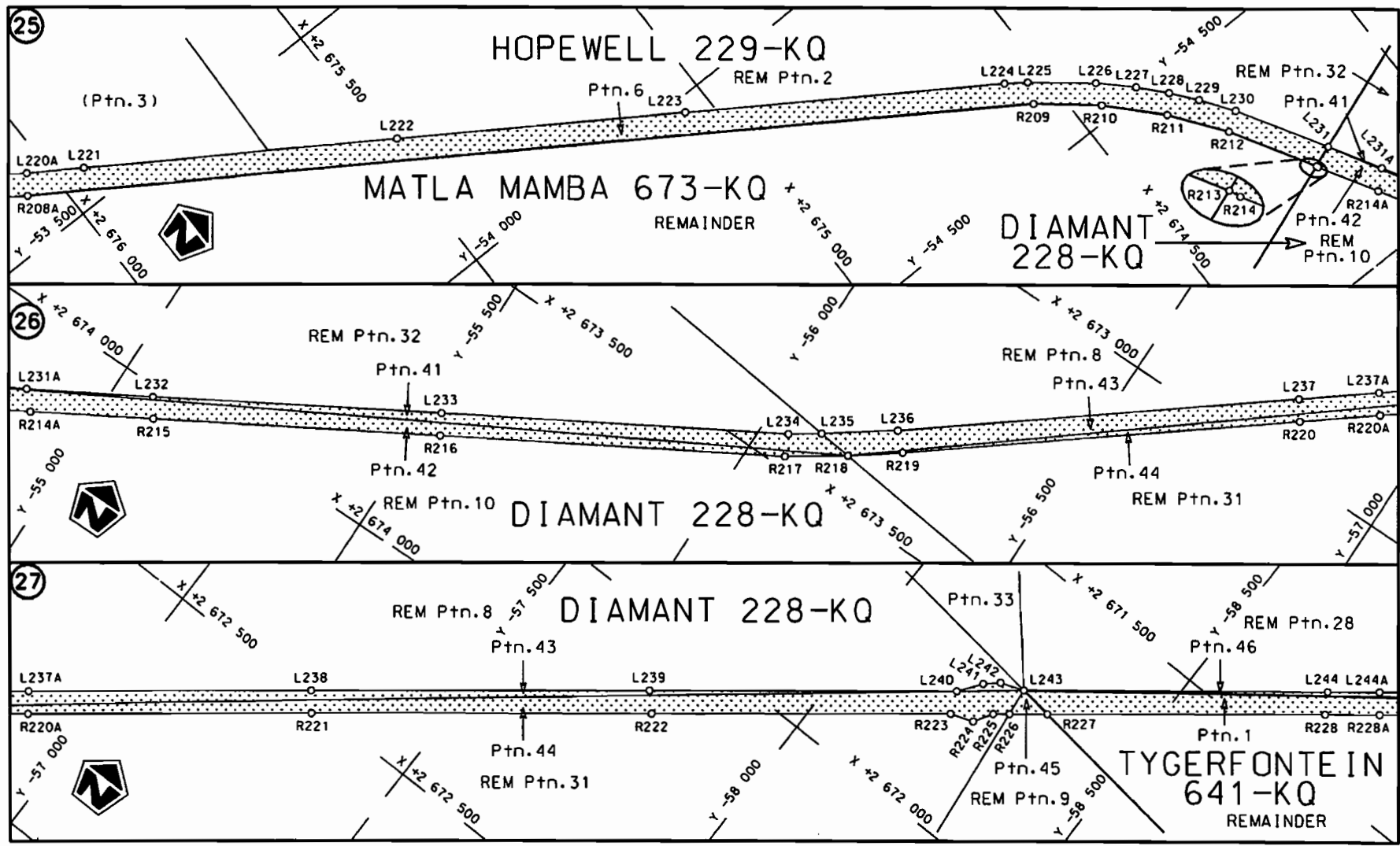
<p>Die Suid Afrikaanse Nasionale Padagentskap Beperk The South African National Roads Agency Limited</p>	<p>Die figuur getoon The figure shown</p> 	<p>steldie padreserwe voor van 'n gedeelte represents the road reserve of a portion von Nasionale Roete R510 Sektie of National Route R510 Section 3</p>	<p>Vel Sheet 6 van of 30 Plan P755/09</p>
--	---	--	---




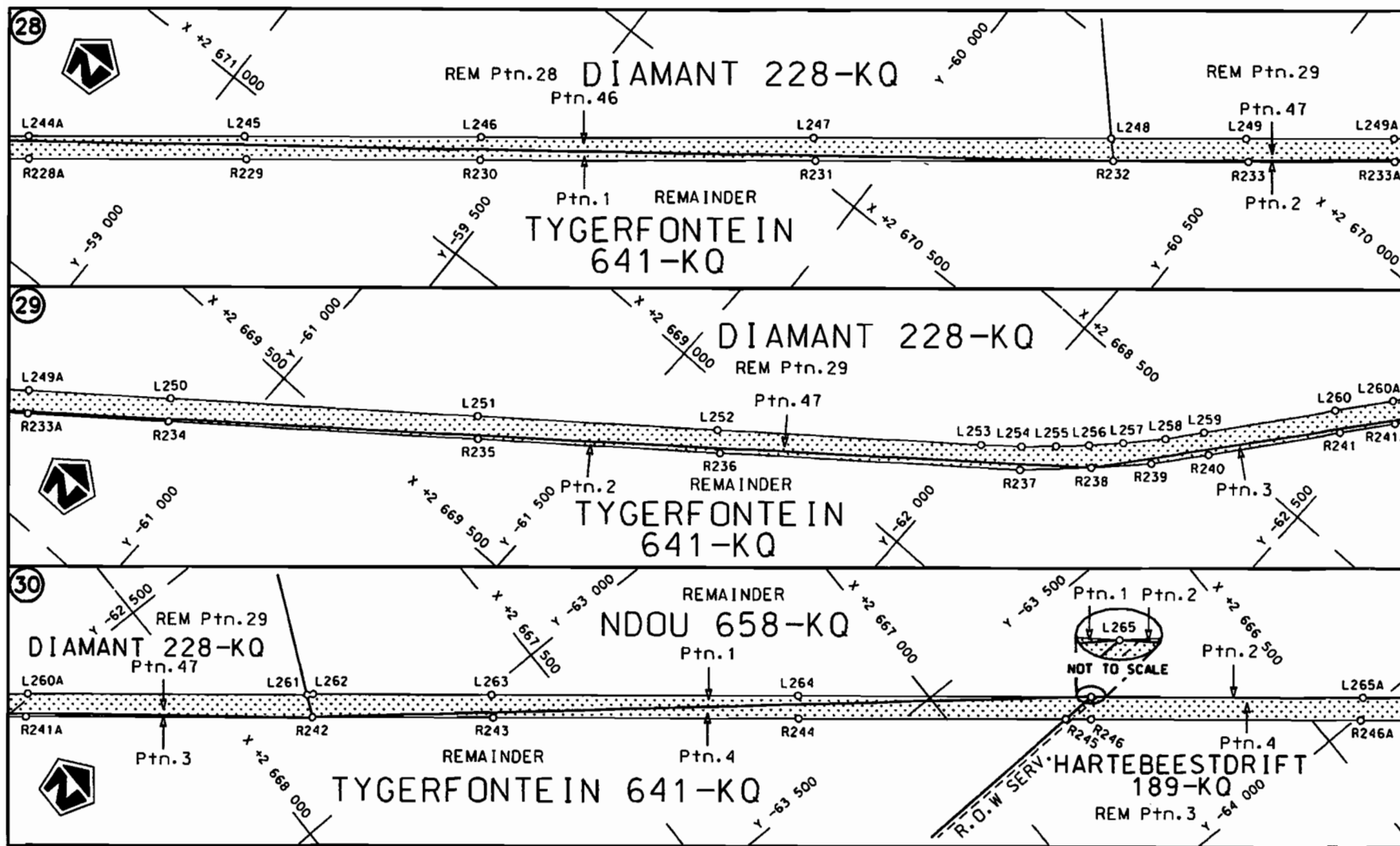
<p>Die Suid Afrikaanse Nasionale Padagentskap Beperk The South African National Roads Agency Limited</p>	<p>Die figuur getoon The figure shown</p>		<p>steldie padreserwe voor van 'n gedeelte represents the road reserve of a portion van Nasionale Roete R510 of National Route</p> <p>Sekse Section</p> <p>3</p>	<p>Vel Sheet 7 van 30 of</p> <p>Plan P755/09</p>
--	---	---	--	--




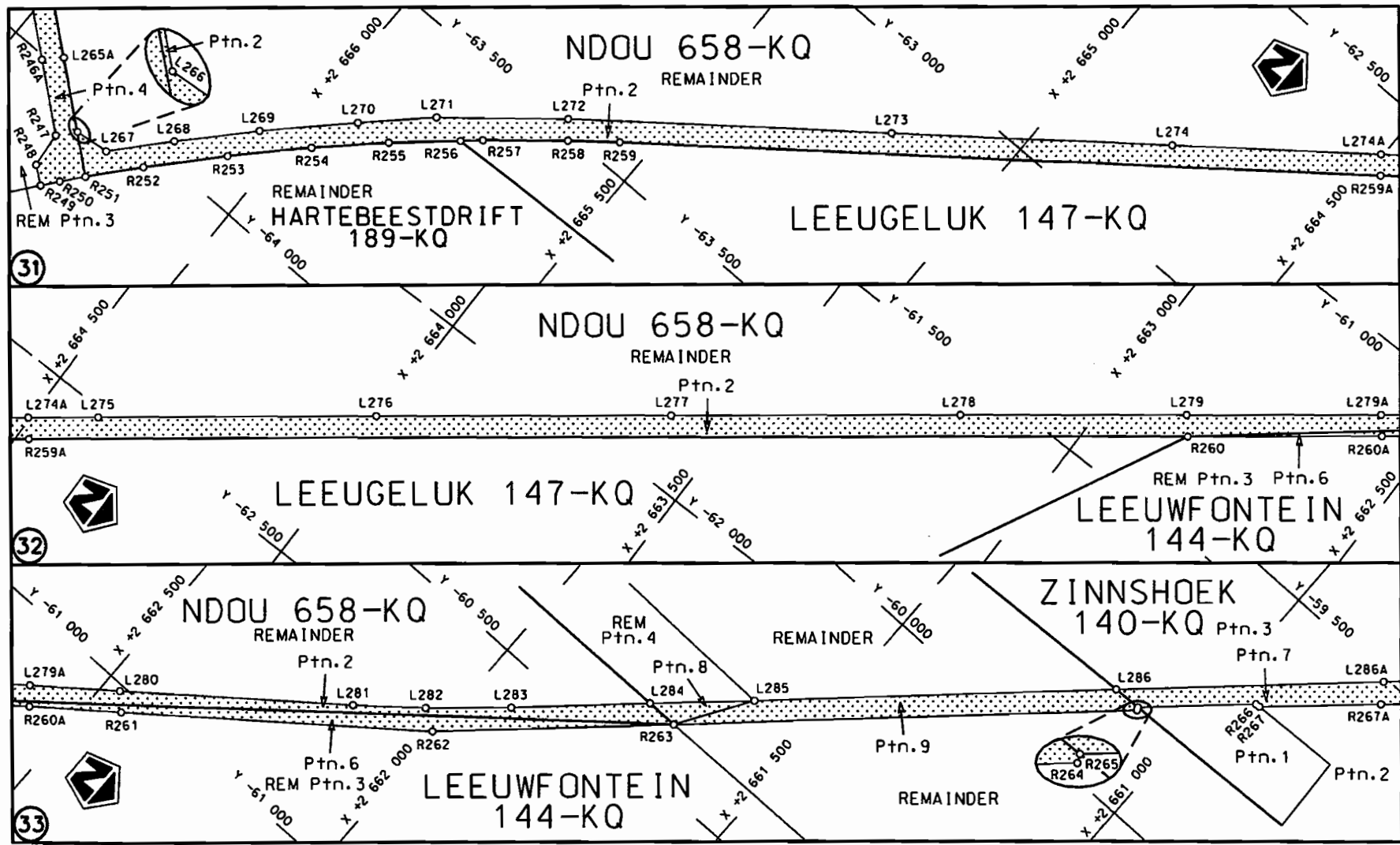
<p>Die Suid Afrikaanse Nasionale Padagentskap Beperk The South African National Roads Agency Limited</p>	<p>Die figuur getoon The figure shown</p>	<p>stelt die padreserwe voor van 'n gedeelte represents the road reserve of a portion van Nasionale Raete R510 Seksie 3 of National Route</p>	<p>Vel Sheet 8 of 30 Plan P755/09</p>
--	---	---	---

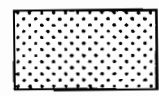


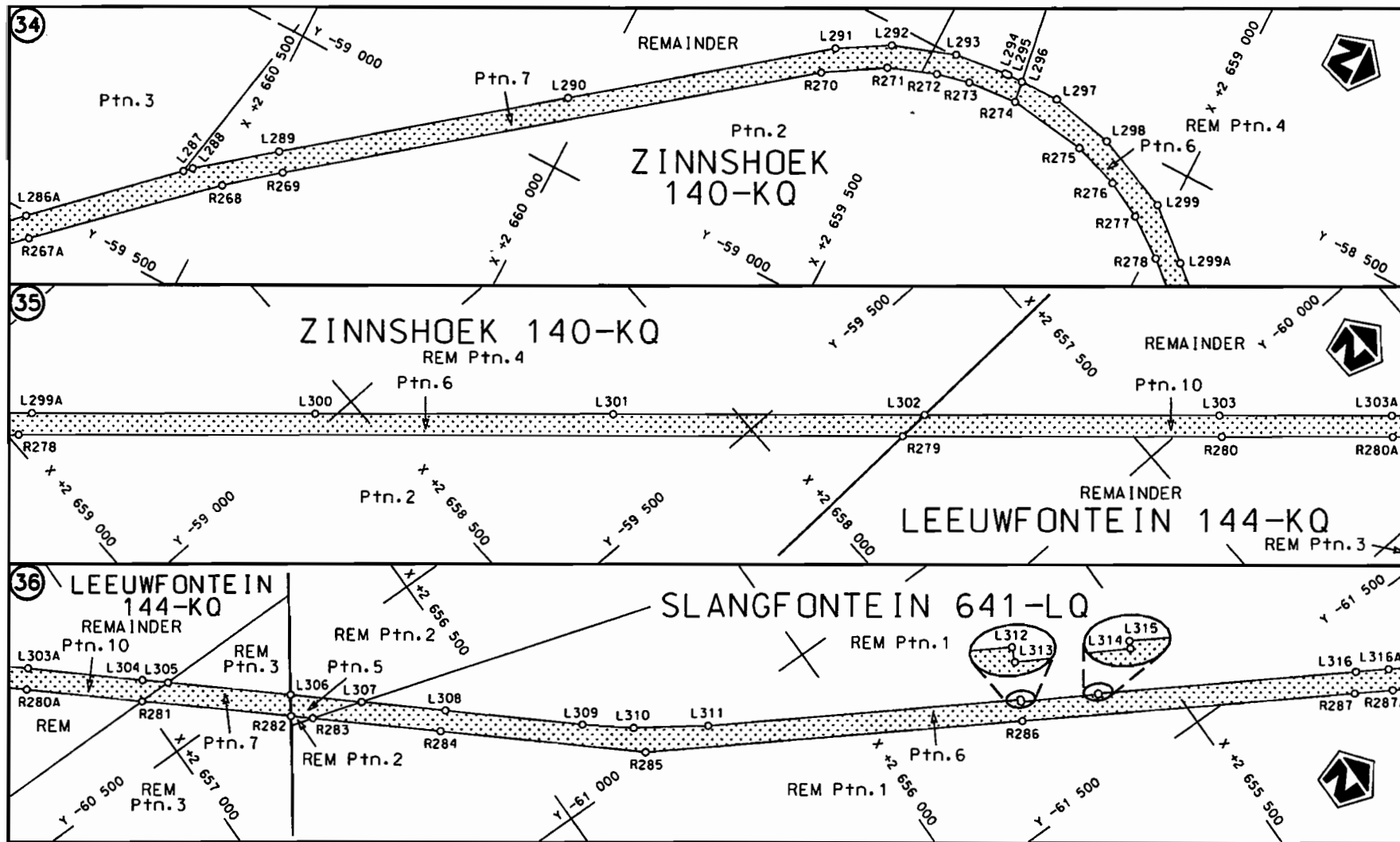
Die Suid Afrikaanse Nasionale Padagentskap Beperk	Die figuur getoon		steldie padreserwe voor van 'n gedeelte	Vel Sheet 9 van 30
The South African National Roads Agency Limited	The figure shown		represents the road reserve of a portion van Nasionale Roete R510 Seksie Section 3	Plan P755/09




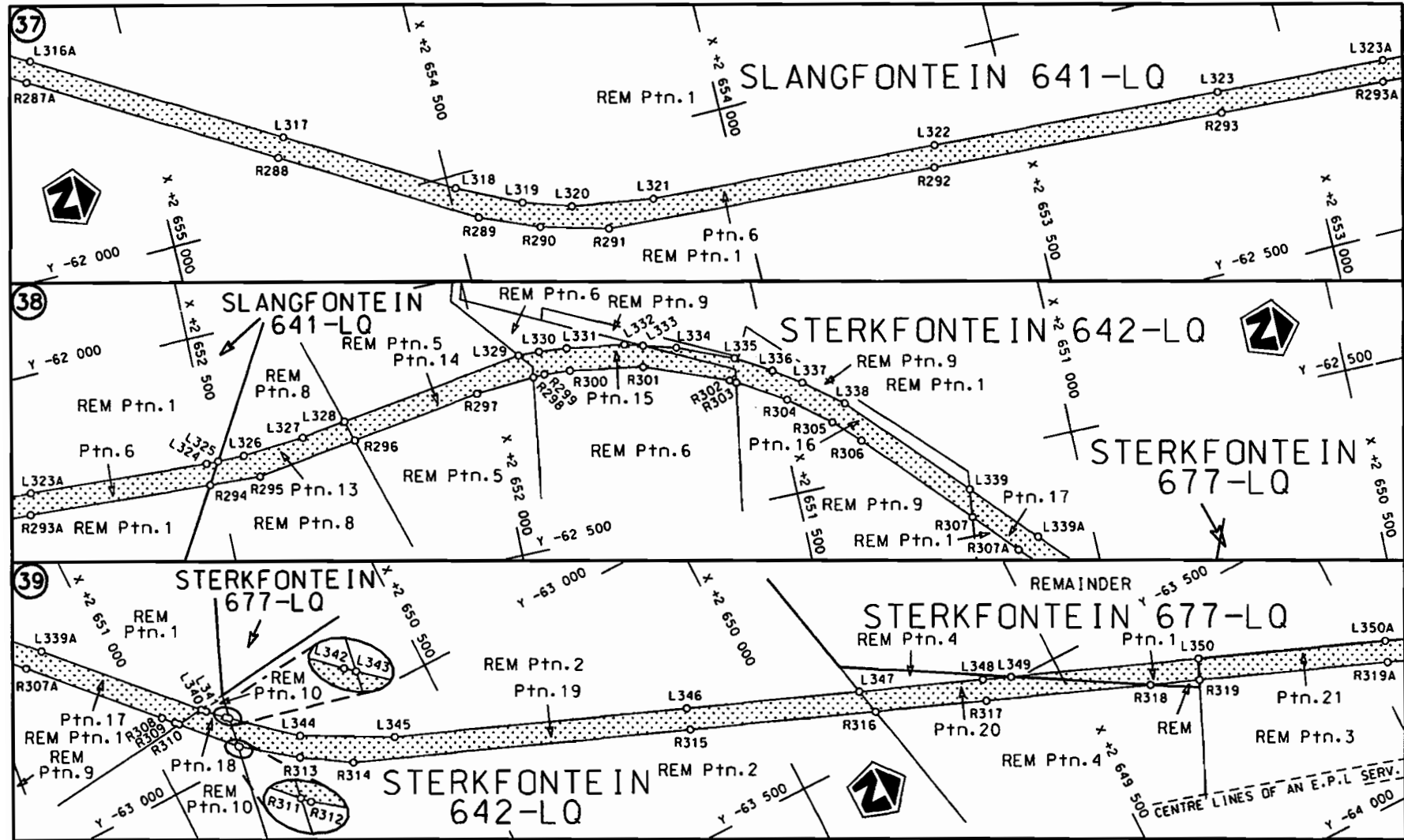
<p>Die Suid Afrikaanse Nasionale Padagentskap Beperk The South African National Roads Agency Limited</p>	<p>Die figuur getoon The figure shown</p>	 <p>stel die padreserwe voor van 'n gedeelte represents the road reserve of a portion van Nasionale Roete R510 Seksie Section 3</p>	<p>Vel Sheet 10 van of 30 Plan P755/09</p>
--	---	--	--




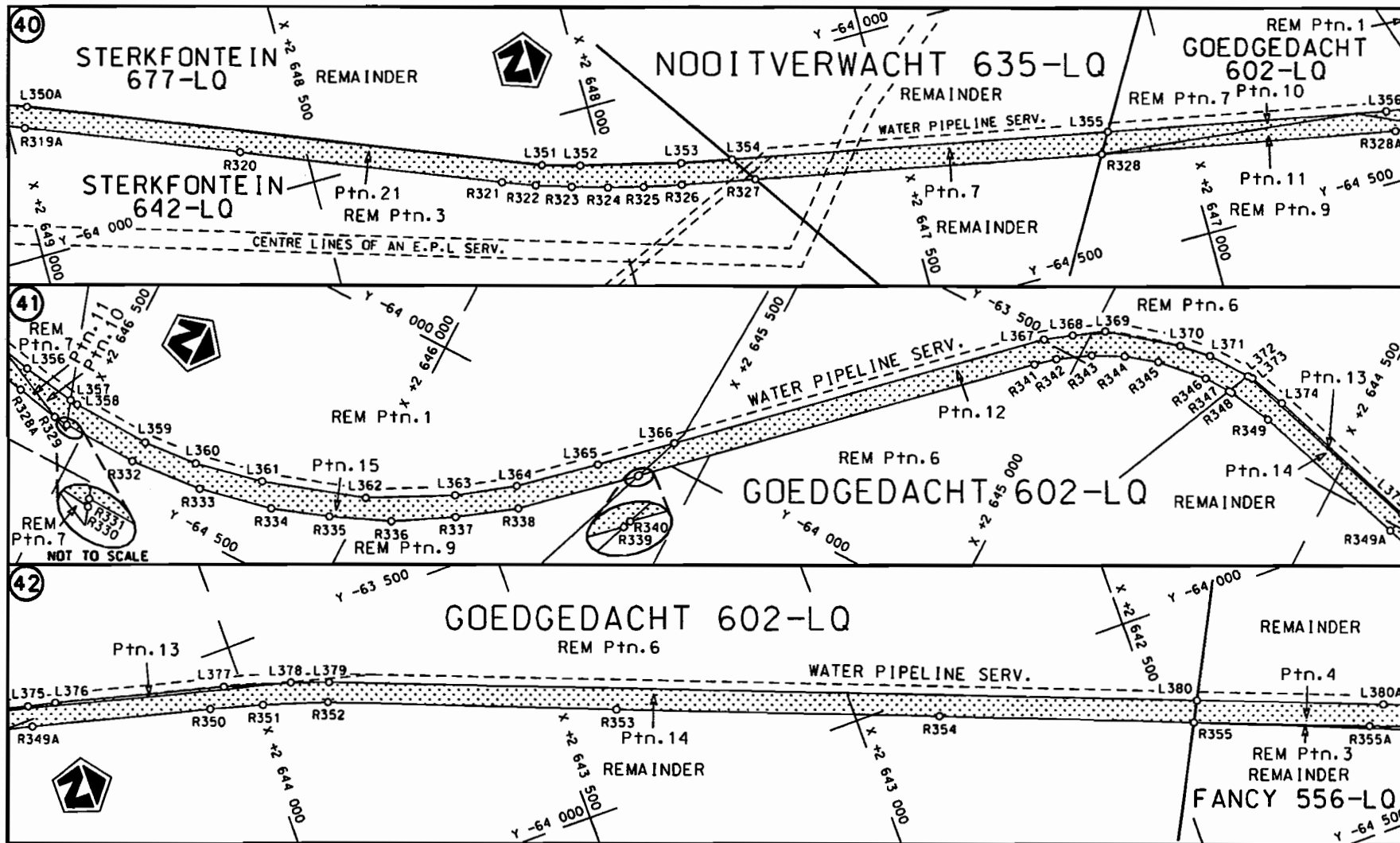
Die Suid Afrikaanse Nasionale Padagentskap Beperk The South African National Roads Agency Limited	Die figuur getoon The figure shown		steldie padreserwe voor van 'n gedeelte represents the road reserve of a portion van Nasionale Roete R510 Seksie Section 3	Vel Sheet 11 van of 30 Plan P755/09
--	---------------------------------------	---	--	--

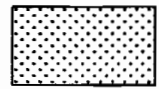


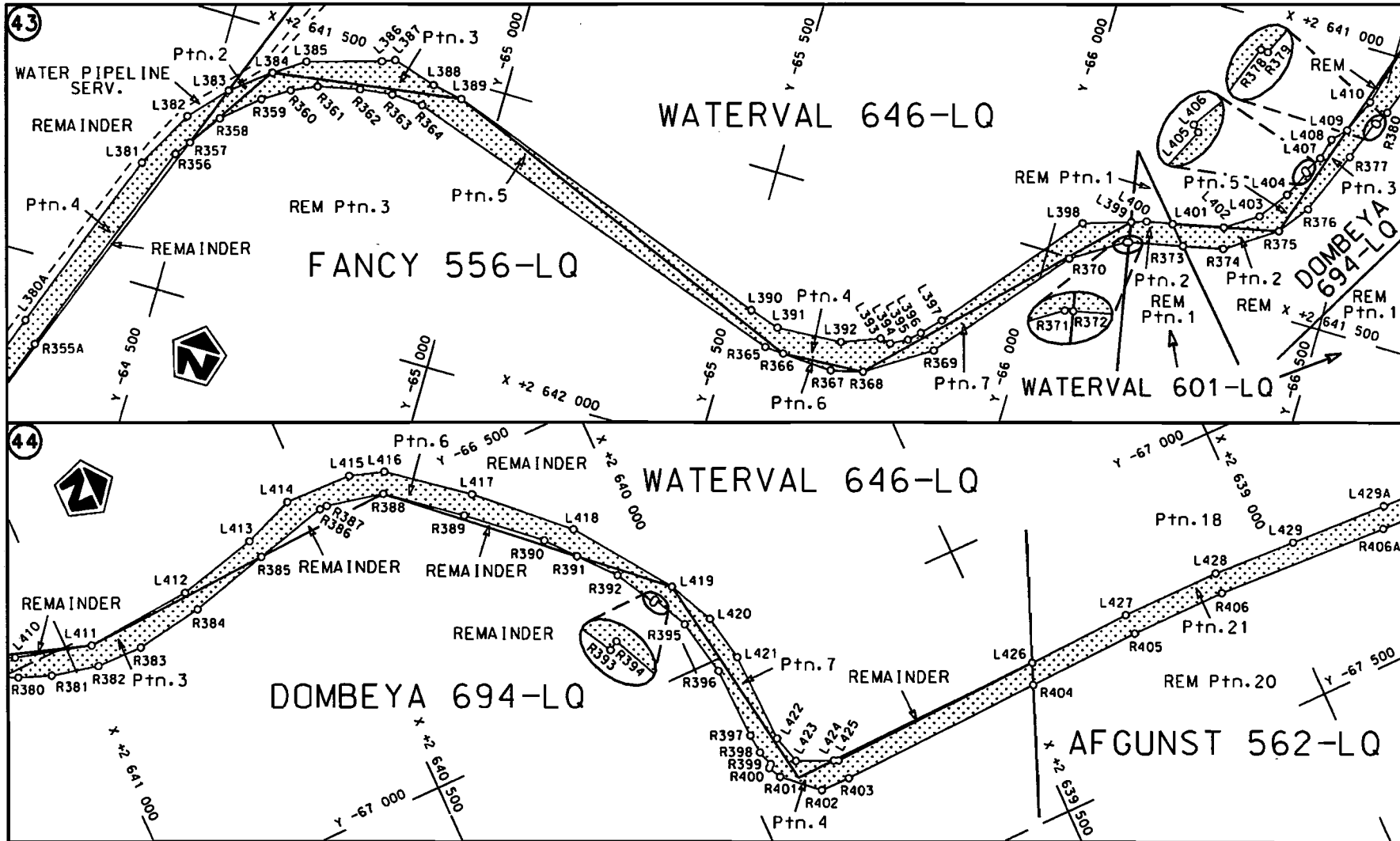
<p>Die Suid Afrikaanse Nasionale Padagentskap Beperk The South African National Roads Agency Limited</p>	<p>Die figuur getoon The figure shown</p> 	<p>steldie padreserwe voor van 'n gedeelte represents the road reserve of a portion van Nasionale Roete R51 Seksie Section 3 of National Route</p>	<p>Vel Sheet 12 van of 30 Plan P755/09</p>
--	---	--	--




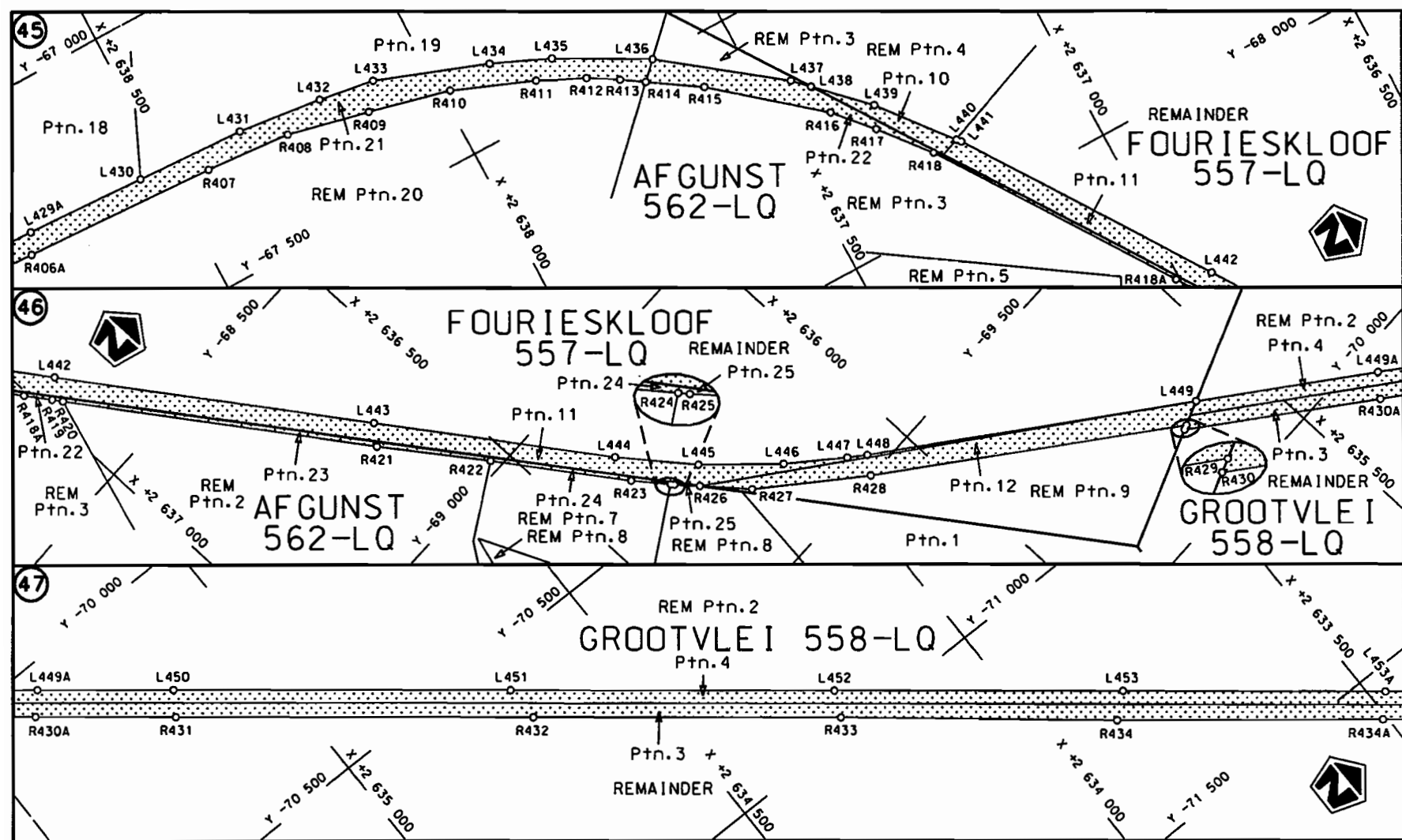
Die Suid Afrikaanse Nasionale Padogenskap Beperk The South African National Roads Agency Limited	Die figuur getoon The figure shown	 steldie padreserwe voor van 'n gedeelte represents the road reserve of a portion van Nasionale Roete R510 Seksie Section 3 of National Route	Vel Sheet 13 van of 30 Plan P755/09
---	---------------------------------------	---	--

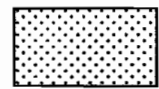


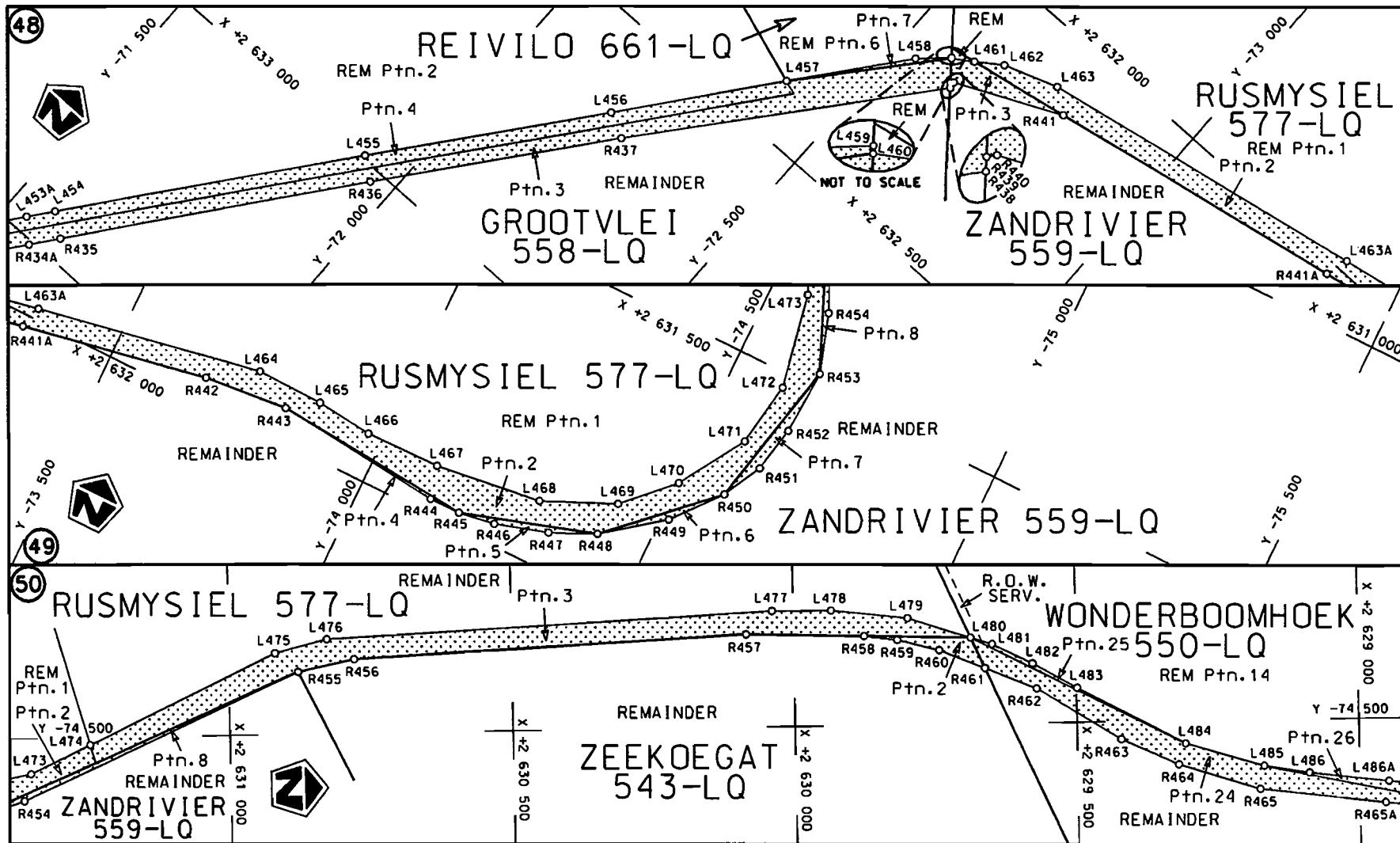
<p>Die Suid Afrikaanse Nasionale Padogentskap Beperk The South African National Roads Agency Limited</p>	<p>Die figuur getoon The figure shown</p> 	<p>steldie padreserwe voor van 'n gedeelte represents the road reserve of a portion van Nasionale Roete R510 Sektie of National Route R510 Section</p> <p>3</p>	<p>Vel Sheet 14 van of 30</p> <p>Plan P755/09</p>
--	---	---	---

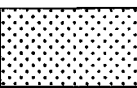


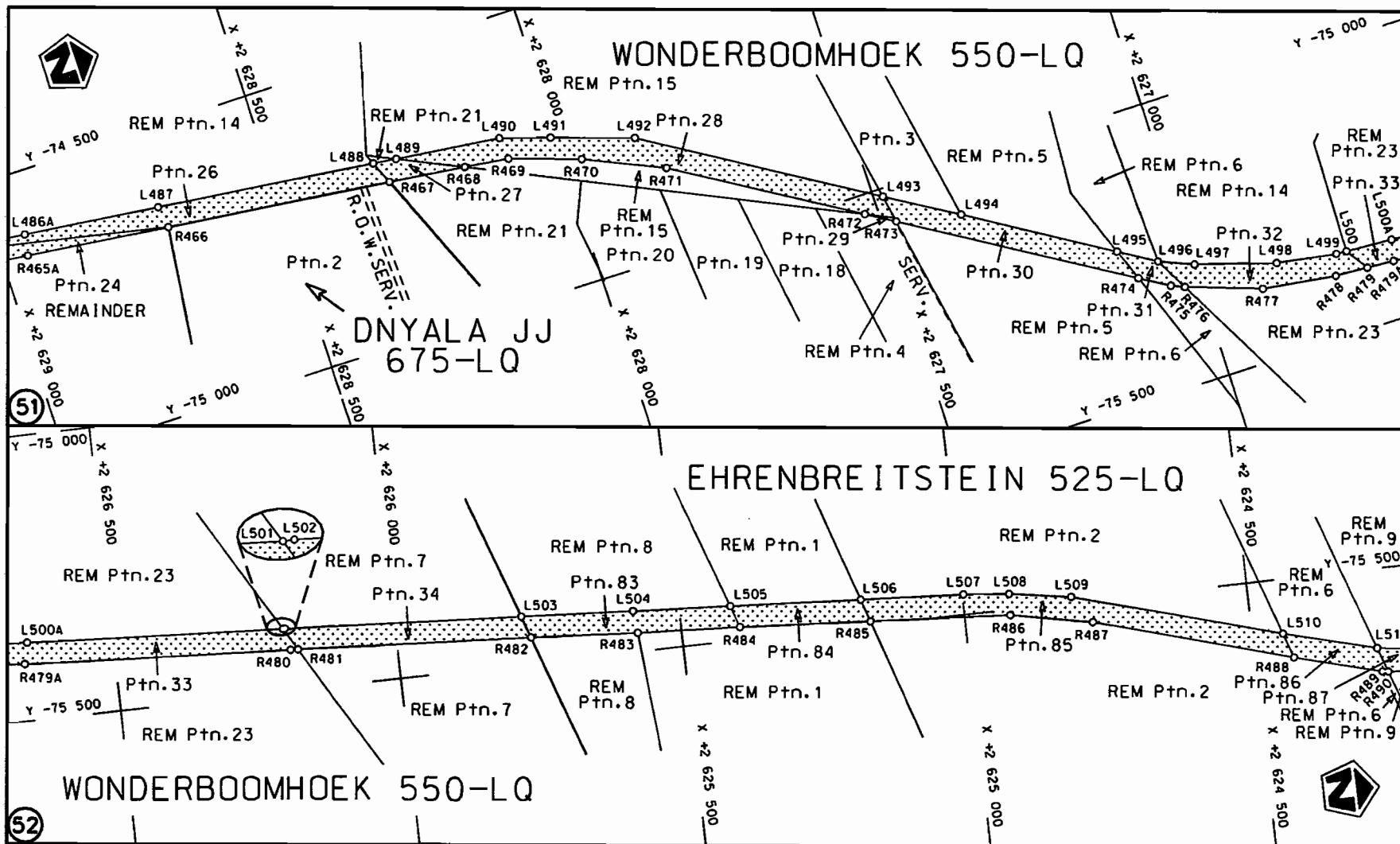
<p>Die Suid Afrikaanse Nasionale Padagentskap Beperk The South African National Roads Agency Limited</p>	<p>Die figuur getoon The figure shown</p> 	<p>steldie padreserwe voor van 'n gedeelte represents the road reserve of a portion van Nasionale Roete R510 Sektie of National Route R510 Section 3</p>	<p>Vel Sheet 15 van 30 Plan P755/09</p>
--	---	--	---



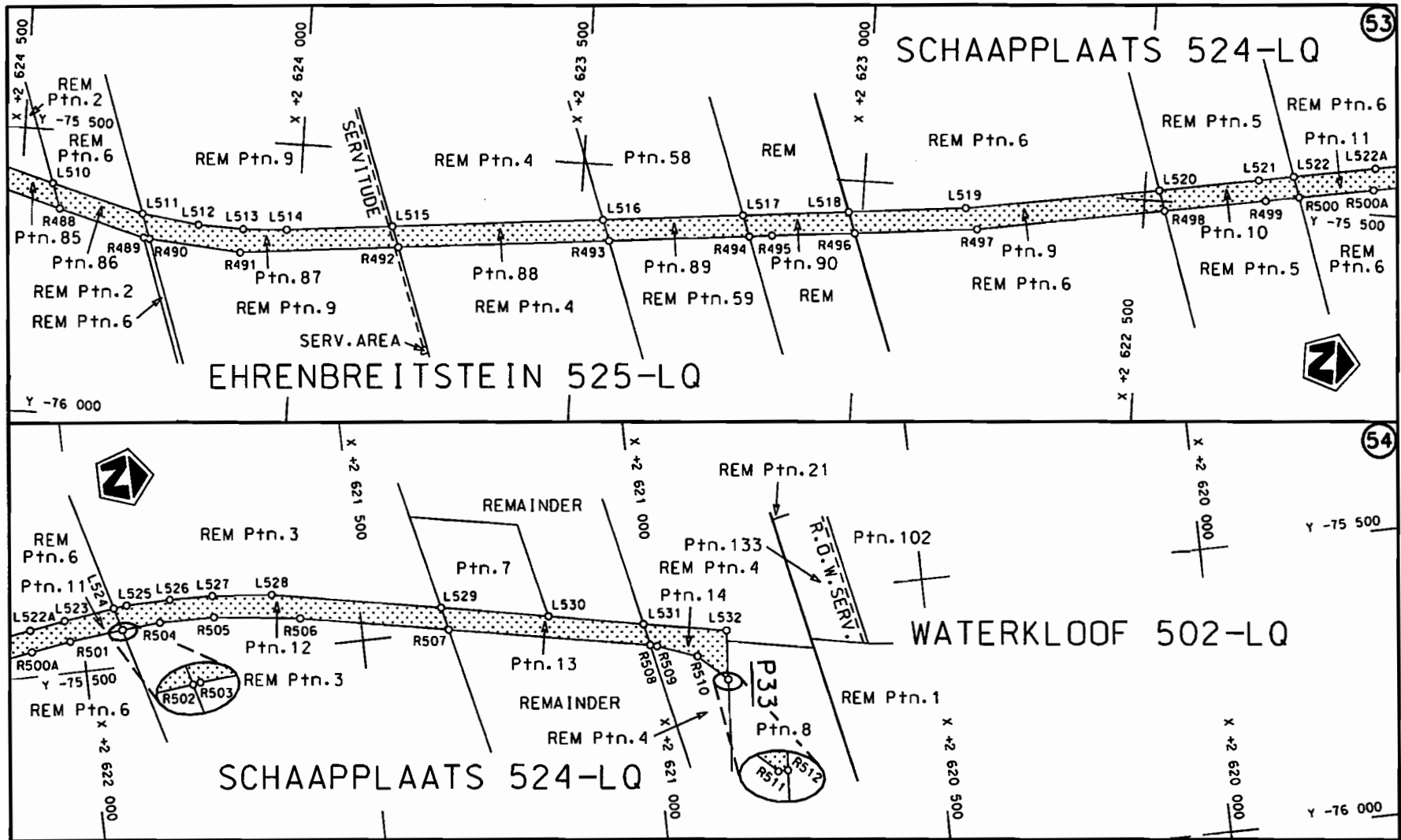
<p>Die Suid Afrikaanse Nasionale Padagentskap Beperk The South African National Roads Agency Limited</p>	<p>Die figuur getoon The figure shown</p> 	<p>stel die padreserwe voor van 'n gedeelte represents the road reserve of a portion van Nasionale Roete R510 Seksie Section of National Route 3</p>	<p>Vel Sheet 16 van of 30 Plan P755/09</p>
--	---	--	--




<p>Die Suid Afrikaanse Nasionale Padagentskap Beperk The South African National Roads Agency Limited</p>	<p>Die figuur getoon The figure shown</p> 	<p>steldie padreserwe voor van 'n gedeelte represents the road reserve of a portion van Nasionale Roete R510 Sektie of National Route R510 Section</p> <p>3</p>	<p>Vel Sheet 17 van 30 Plan P755/09</p>
--	---	---	---



<p>Die Suid Afrikaanse Nasionale Padogentskap Beperk The South African National Roads Agency Limited</p>	<p>Die figuur getoon The figure shown</p>	<p>steldie padreserwe voor van 'n gedeelte represents the road reserve of a portion van Nasionale Roete of Notional Route</p>	<p>Vel Sheet 18 van of 30</p>
<p>R510 Seksie Section 3</p>			<p>Plan P755/09</p>



Die Suid Afrikaanse Nasionale Padagentskap Beperk The South African National Roads Agency Limited	Die figuur getoon The figure shown		steldie padreserwe voor van 'n gedeelte represents the road reserve of a portion van Nasionale Roete R510 Seksie Section 3 of National Route	Vel Sheet 19 van of 30 Plan P755/09
--	---------------------------------------	---	---	--

PADRESERWE KOÖRDINATE				/	ROAD RESERVE CO-ORDINATES			
LINKERKANT/LEFT HAND SIDE					REGTERKANT/RIGHT HAND SIDE			
	Y	X	WG	27°	Y	X		
L1	-40 001.050	2 720 305.630			R1	-40 035.610	2 720 291.690	
L2	-39 916.930	2 720 131.250			R2	-39 983.150	2 720 182.720	
L3	-39 874.980	2 720 041.340			R3	-39 940.150	2 720 093.660	
L4	-39 870.850	2 720 032.220			R4	-39 795.100	2 719 780.910	
L5	-39 796.770	2 719 869.270			R5	-39 756.080	2 719 635.440	
L6	-39 759.890	2 719 773.650			R6	-39 746.020	2 719 578.430	
L7	-39 729.460	2 719 670.780			R7	-39 707.060	2 719 357.650	
L8	-39 708.740	2 719 576.640			R8	-39 693.540	2 719 284.880	
L9	-39 661.430	2 719 306.700			R9	-39 687.940	2 719 209.830	
L10	-39 654.460	2 719 237.620			R10	-39 697.920	2 719 072.620	
L11	-39 648.470	2 719 197.350			R11	-39 723.960	2 718 962.920	
L12	-39 666.270	2 719 046.990			R12	-39 921.480	2 718 328.690	
L13	-39 680.080	2 718 988.870			R13	-40 038.510	2 717 954.420	
L14	-39 684.440	2 718 968.480			R14	-40 062.640	2 717 876.780	
L15	-39 742.340	2 718 776.390			R15	-40 125.670	2 717 674.690	
L16	-39 887.710	2 718 311.170			R16	-40 151.080	2 717 640.780	
L17	-40 008.540	2 717 924.360			R17	-40 161.060	2 717 611.140	
L18	-40 088.870	2 717 667.180			R18	-40 160.880	2 717 561.860	
L19	-40 215.460	2 717 260.710			R19	-40 230.120	2 717 341.430	
L20	-40 376.370	2 716 744.830			R20	-40 257.560	2 717 252.580	
L21	-40 391.260	2 716 687.150			R21	-40 408.520	2 716 769.020	
L22	-40 399.170	2 716 655.030			R22	-40 425.050	2 716 713.400	
L23	-40 405.420	2 716 566.730			R23	-40 436.040	2 716 667.190	
L24	-40 425.720	2 716 069.430			R24	-40 443.330	2 716 570.520	
L25	-40 451.110	2 715 435.250			R25	-40 464.130	2 716 050.970	
L26	-40 463.140	2 715 321.090			R26	-40 489.020	2 715 431.780	
L27	-40 511.910	2 715 057.720			R27	-40 498.820	2 715 329.740	
L28	-40 554.470	2 714 893.880			R28	-40 561.040	2 715 001.590	
L29	-40 603.150	2 714 778.850			R29	-40 596.960	2 714 890.970	
L30	-40 851.690	2 714 333.600			R30	-40 637.390	2 714 802.970	
L31	-41 097.760	2 713 892.120			R31	-40 887.640	2 714 350.250	
L32	-41 340.390	2 713 457.020			R32	-41 130.830	2 713 912.790	
L33	-41 599.380	2 712 993.680			R33	-41 372.800	2 713 477.520	
L34	-41 662.070	2 712 881.790			R34	-41 633.480	2 713 010.150	
L35	-41 723.480	2 712 761.660			R35	-41 717.210	2 712 859.310	
L36	-41 754.620	2 712 684.310			R36	-41 755.620	2 712 783.930	
L37	-41 808.310	2 712 518.770			R37	-41 790.750	2 712 700.110	
L38	-41 832.560	2 712 339.770			R38	-41 813.670	2 712 637.250	
L39	-41 884.840	2 711 767.220			R39	-41 842.110	2 712 535.300	
L40	-41 910.810	2 711 490.840			R40	-41 859.230	2 712 446.980	
L41	-41 954.790	2 711 008.520			R41	-41 870.430	2 712 343.590	
L42	-41 961.710	2 710 938.010			R42	-41 922.930	2 711 771.210	
L43	-41 961.750	2 710 937.610			R43	-41 948.970	2 711 485.660	
L44	-41 973.480	2 710 829.320			R44	-41 992.350	2 711 013.270	
L45	-42 019.680	2 710 394.460			R45	-41 998.310	2 710 954.900	
L46	-42 063.020	2 709 982.360			R46	-42 010.640	2 710 834.100	
L47	-42 099.980	2 709 635.680			R47	-42 053.420	2 710 432.510	
L48	-42 109.570	2 709 558.720			R48	-42 139.520	2 709 618.980	
L49	-42 116.290	2 709 516.120			R49	-42 148.200	2 709 553.430	
L50	-42 136.380	2 709 386.160			R50	-42 153.250	2 709 519.250	
L51	-42 215.190	2 708 919.100			R51	-42 162.980	2 709 453.990	

Vel 20 Van 30
Sheet of

P755/09

PADRESERWE KOÖRDINATE				/	ROAD RESERVE CO-ORDINATES			
LINKERKANT/LEFT HAND SIDE					REGTERKANT/RIGHT HAND SIDE			
	Y	X	WG	27°	Y	X		
L52	-42 216.940	2 708	907.900	R52	-42 254.060	2 708	914.820	
L53	-42 302.700	2 708	398.860	R53	-42 264.540	2 708	851.200	
L54	-42 367.760	2 708	012.640	R54	-42 340.040	2 708	404.050	
L55	-42 380.140	2 707	920.610	R55	-42 405.060	2 708	017.420	
L56	-42 384.730	2 707	829.510	R56	-42 417.530	2 707	921.330	
L57	-42 383.510	2 707	761.890	R57	-42 421.970	2 707	830.130	
L58	-42 363.550	2 707	375.370	R58	-42 421.070	2 707	760.860	
L59	-42 336.400	2 706	873.430	R59	-42 400.740	2 707	372.190	
L60	-42 330.200	2 706	723.580	R60	-42 387.480	2 707	130.100	
L61	-42 308.100	2 706	027.380	R61	-42 373.610	2 706	866.200	
L62	-42 291.560	2 705	501.560	R62	-42 367.730	2 706	721.410	
L63	-42 274.520	2 704	966.470	R63	-42 351.880	2 706	230.380	
L64	-42 268.180	2 704	777.330	R64	-42 345.520	2 706	026.510	
L65	-42 261.610	2 704	695.440	R65	-42 335.540	2 705	720.770	
L66	-42 246.070	2 704	606.590	R66	-42 328.880	2 705	499.540	
L67	-42 202.170	2 704	463.070	R67	-42 312.770	2 704	981.640	
L68	-42 165.090	2 704	380.400	R68	-42 312.000	2 704	965.690	
L69	-42 000.640	2 704	036.570	R69	-42 305.990	2 704	785.920	
L70	-41 994.430	2 704	022.060	R70	-42 298.790	2 704	692.770	
L71	-41 783.700	2 703	582.630	R71	-42 297.670	2 704	687.210	
L72	-41 557.590	2 703	109.390	R72	-42 280.340	2 704	587.830	
L73	-41 307.340	2 702	585.990	R73	-42 250.350	2 704	492.590	
L74	-41 236.860	2 702	437.710	R74	-42 239.640	2 704	458.200	
L75	-41 113.560	2 702	180.970	R75	-42 199.810	2 704	366.980	
L76	-41 013.780	2 701	972.380	R76	-42 036.950	2 704	025.310	
L77	-40 973.990	2 701	879.500	R77	-42 029.950	2 704	009.500	
L78	-40 944.230	2 701	791.860	R78	-41 822.650	2 703	577.030	
L79	-40 932.010	2 701	746.780	R79	-41 591.630	2 703	093.580	
L80	-40 804.500	2 701	248.510	R80	-41 345.120	2 702	577.920	
L81	-40 684.350	2 700	779.480	R81	-41 298.880	2 702	482.310	
L82	-40 655.450	2 700	666.200	R82	-41 164.930	2 702	201.220	
L83	-40 637.010	2 700	580.560	R83	-41 150.700	2 702	171.120	
L84	-40 634.940	2 700	565.870	R84	-41 048.020	2 701	956.320	
L85	-40 627.460	2 700	512.710	R85	-41 009.470	2 701	866.540	
L86	-40 624.580	2 700	484.920	R86	-40 971.950	2 701	750.490	
L87	-40 618.500	2 700	411.570	R87	-40 840.880	2 701	239.470	
L88	-40 573.260	2 699	910.770	R88	-40 794.500	2 701	058.210	
L89	-40 514.110	2 699	248.100	R89	-40 721.350	2 700	771.650	
L90	-40 483.860	2 698	910.360	R90	-40 690.840	2 700	652.870	
L91	-40 432.760	2 698	335.370	R91	-40 674.130	2 700	573.860	
L92	-40 395.580	2 697	920.890	R92	-40 661.840	2 700	481.950	
L93	-40 352.470	2 697	437.020	R93	-40 653.660	2 700	395.690	
L94	-40 309.740	2 696	958.260	R94	-40 610.940	2 699	912.190	
L95	-40 268.560	2 696	496.310	R95	-40 550.350	2 699	233.690	
L96	-40 248.400	2 696	276.340	R96	-40 522.200	2 698	918.310	
L97	-40 212.030	2 695	861.480	R97	-40 470.730	2 698	341.540	
L98	-40 174.650	2 695	442.120	R98	-40 456.010	2 698	173.150	
L99	-40 132.350	2 694	967.880	R99	-40 433.200	2 697	919.550	
L100	-40 082.360	2 694	406.080	R100	-40 389.950	2 697	437.010	
L101	-40 045.570	2 693	994.510	R101	-40 346.540	2 696	950.250	
L102	-39 999.260	2 693	475.290	R102	-40 306.710	2 696	504.160	

Vel 21 Van 30 P755/09
Sheet of

PADRESERWE KOÖRDINATE				/ ROAD RESERVE CO-ORDINATES			
LINKERKANT/LEFT HAND SIDE				REGTERKANT/RIGHT HAND SIDE			
	Y	X	WG 27°		Y	X	
L103	-39 984.880	2 693 311.240		R103	-40 285.450	2 696 258.930	
L104	-39 953.700	2 692 962.980		R104	-40 251.240	2 695 878.920	
L105	-39 941.270	2 692 824.320		R105	-40 210.680	2 695 422.210	
L106	-39 932.160	2 692 749.950		R106	-40 170.270	2 694 970.280	
L107	-39 817.550	2 692 245.070		R107	-40 119.680	2 694 402.540	
L108	-39 695.730	2 691 725.850		R108	-40 083.110	2 693 991.490	
L109	-39 587.420	2 691 265.370		R109	-40 036.830	2 693 471.550	
L110	-39 456.580	2 690 708.390		R110	-40 021.800	2 693 302.260	
L111	-39 432.520	2 690 618.160		R111	-39 969.640	2 692 745.300	
L112	-39 372.810	2 690 446.640		R112	-39 474.860	2 690 630.080	
L113	-39 311.230	2 690 311.210		R113	-39 407.750	2 690 433.130	
L114	-39 262.230	2 690 221.610		R114	-39 306.900	2 690 213.790	
L115	-39 250.320	2 690 200.640		R115	-40 045.330	2 689 912.310	
L116	-39 265.360	2 690 191.970		R116	-40 528.730	2 689 714.970	
L117	-39 291.890	2 690 176.660		R117	-41 100.560	2 689 481.840	
L118	-40 032.920	2 689 873.930		R118	-41 739.930	2 689 220.680	
L119	-40 514.880	2 689 677.360		R119	-42 528.700	2 688 897.390	
L120	-41 087.080	2 689 443.940		R120	-42 923.620	2 688 737.690	
L121	-41 725.340	2 689 183.620		R121	-43 299.590	2 688 584.050	
L122	-41 725.060	2 689 182.900		R122	-43 774.560	2 688 390.540	
L123	-42 905.490	2 688 701.170		R123	-44 222.140	2 688 208.010	
L124	-45 131.060	2 687 793.640		R124	-44 630.450	2 688 041.670	
L125	-45 625.610	2 687 590.660		R125	-45 146.230	2 687 831.110	
L126	-45 660.900	2 687 574.180		R126	-45 629.590	2 687 633.170	
L127	-46 128.410	2 687 366.390		R127	-45 660.460	2 687 616.840	
L128	-46 517.590	2 687 197.100		R128	-46 096.450	2 687 426.170	
L129	-46 521.060	2 687 194.320		R129	-46 542.070	2 687 227.510	
L130	-46 524.470	2 687 191.590		R130	-48 446.540	2 686 388.340	
L131	-46 959.090	2 686 999.510		R131	-48 622.300	2 686 308.900	
L132	-47 395.020	2 686 807.090		R132	-48 676.720	2 686 283.540	
L133	-47 865.920	2 686 599.070		R133	-48 723.520	2 686 257.970	
L134	-48 278.380	2 686 417.020		R134	-48 777.180	2 686 223.910	
L135	-48 609.480	2 686 270.650		R135	-48 813.010	2 686 198.800	
L136	-48 699.390	2 686 226.200		R136	-48 857.990	2 686 163.700	
L137	-48 770.580	2 686 180.550		R137	-48 891.280	2 686 134.940	
L138	-48 833.520	2 686 132.460		R138	-48 947.910	2 686 080.110	
L139	-48 865.600	2 686 105.300		R139	-49 002.550	2 686 017.830	
L140	-48 921.130	2 686 050.930		R140	-49 075.160	2 685 915.390	
L141	-48 984.480	2 685 978.300		R141	-49 113.510	2 685 848.740	
L142	-49 037.810	2 685 901.620		R142	-49 141.130	2 685 791.350	
L143	-49 079.190	2 685 829.510		R143	-49 164.580	2 685 733.790	
L144	-49 103.220	2 685 779.660		R144	-49 189.430	2 685 660.080	
L145	-49 125.480	2 685 728.960		R145	-49 205.020	2 685 599.680	
L146	-49 151.670	2 685 648.060		R146	-49 212.990	2 685 560.140	
L147	-49 163.840	2 685 601.450		R147	-49 230.090	2 685 450.860	
L148	-49 180.180	2 685 515.560		R148	-49 244.660	2 685 413.040	
L149	-49 186.630	2 685 458.030		R149	-49 244.570	2 685 412.780	
L150	-49 188.930	2 685 400.190		R150	-49 229.140	2 685 365.230	
L151	-49 189.440	2 685 376.890		R151	-49 226.280	2 685 294.680	
L152	-49 186.260	2 685 297.220		R152	-49 217.390	2 685 219.060	
L153	-49 176.980	2 685 221.790		R153	-49 167.960	2 684 899.460	

Vel	22	Van	30	P755/09
Sheet		of		

PADRESERWE KOÖRDINATE				/	ROAD RESERVE CO-ORDINATES			
LINKERKANT/LEFT HAND SIDE					REGTERKANT/RIGHT HAND SIDE			
	Y	X	WG	27°	Y	X		
L154	-49 123.110	2 684	876.610	R154	-49 164.990	2 684	880.360	
L155	-49 048.340	2 684	393.960	R155	-49 096.460	2 684	440.020	
L156	-49 038.080	2 684	335.090	R156	-49 063.910	2 684	261.390	
L157	-49 026.590	2 684	278.490	R157	-49 032.510	2 684	138.490	
L158	-49 012.750	2 684	219.560	R158	-48 991.290	2 684	012.160	
L159	-48 995.910	2 684	157.880	R159	-48 969.800	2 683	955.740	
L160	-48 995.510	2 684	154.890	R160	-48 939.230	2 683	882.650	
L161	-48 975.270	2 684	087.720	R161	-48 906.060	2 683	812.030	
L162	-48 955.190	2 684	028.890	R162	-48 866.400	2 683	734.860	
L163	-48 934.410	2 683	973.670	R163	-48 566.580	2 683	208.680	
L164	-48 903.010	2 683	899.200	R164	-48 523.230	2 683	130.010	
L165	-48 868.510	2 683	824.940	R165	-48 401.670	2 682	879.180	
L166	-48 840.580	2 683	769.700	R166	-48 398.720	2 682	871.200	
L167	-48 787.860	2 683	676.220	R167	-48 352.400	2 682	745.720	
L168	-48 489.400	2 683	150.000	R168	-48 304.340	2 682	601.610	
L169	-48 451.980	2 683	078.200	R169	-48 301.950	2 682	594.460	
L170	-48 417.040	2 683	005.600	R170	-48 230.300	2 682	329.810	
L171	-48 392.300	2 682	950.800	R171	-48 123.550	2 681	926.700	
L172	-48 363.910	2 682	884.560	R172	-48 005.190	2 681	479.160	
L173	-48 316.750	2 682	764.420	R173	-47 996.260	2 681	442.640	
L174	-48 275.840	2 682	646.170	R174	-47 983.470	2 681	362.950	
L175	-48 267.590	2 682	616.160	R175	-47 979.200	2 681	285.150	
L176	-48 236.070	2 682	508.260	R176	-47 982.020	2 681	209.100	
L177	-48 193.640	2 682	345.050	R177	-47 993.480	2 681	130.320	
L178	-48 083.700	2 681	931.240	R178	-48 009.640	2 681	059.560	
L179	-47 966.390	2 681	488.360	R179	-48 044.800	2 680	957.330	
L180	-47 944.510	2 681	368.630	R180	-48 112.880	2 680	842.600	
L181	-47 939.230	2 681	285.170	R181	-48 160.340	2 680	779.010	
L182	-47 940.850	2 681	224.210	R182	-48 197.670	2 680	737.600	
L183	-47 947.310	2 681	161.060	R183	-48 240.260	2 680	696.840	
L184	-47 958.840	2 681	101.150	R184	-48 285.300	2 680	659.490	
L185	-47 974.510	2 681	041.410	R185	-48 334.040	2 680	625.310	
L186	-47 993.540	2 680	985.600	R186	-48 382.030	2 680	596.190	
L187	-48 025.760	2 680	912.920	R187	-48 437.530	2 680	568.410	
L188	-48 030.890	2 680	864.890	R188	-48 495.350	2 680	544.420	
L189	-48 053.920	2 680	831.940	R189	-48 587.510	2 680	517.390	
L190	-48 092.460	2 680	801.760	R190	-50 559.270	2 679	970.040	
L191	-48 127.590	2 680	755.610	R191	-50 626.490	2 679	948.810	
L192	-48 169.690	2 680	708.940	R192	-50 705.120	2 679	917.090	
L193	-48 213.380	2 680	667.150	R193	-50 747.680	2 679	896.760	
L194	-48 261.530	2 680	627.890	R194	-50 780.800	2 679	880.840	
L195	-48 311.140	2 680	592.520	R195	-50 878.420	2 679	817.170	
L196	-48 362.710	2 680	560.350	R196	-50 898.840	2 679	802.870	
L197	-48 429.850	2 680	528.060	R197	-50 942.390	2 679	767.190	
L198	-48 496.950	2 680	506.570	R198	-50 992.230	2 679	722.000	
L199	-48 767.940	2 680	429.870	R199	-51 031.020	2 679	684.170	
L200	-48 955.610	2 680	374.130	R200	-51 085.070	2 679	621.200	
L201	-49 165.150	2 680	315.860	R201	-51 140.650	2 679	544.260	
L202	-49 676.590	2 680	174.020	R202	-51 382.170	2 679	171.990	
L203	-50 124.410	2 680	050.320	R203	-51 633.700	2 678	787.300	
L204	-50 540.550	2 679	934.030	R204	-51 864.810	2 678	432.920	

Vel	23	Van	30	P755/09
Sheet		of		

PADRESERWE KOÖRDINATE				/	ROAD RESERVE CO-ORDINATES						
LINKERKANT/LEFT HAND SIDE					REGTERKANT/RIGHT HAND SIDE						
	Y	X	WG	27°	Y	X					
L205	-50	613.700	2	679	910.990	R205	-52	136.540	2	678	015.880
L206	-50	683.890	2	679	883.170	R206	-52	375.540	2	677	649.220
L207	-50	754.470	2	679	851.100	R207	-52	683.710	2	677	176.580
L208	-50	854.800	2	679	785.320	R208	-52	988.250	2	676	709.420
L209	-50	917.050	2	679	736.990	R209	-54	397.100	2	674	548.580
L210	-51	002.470	2	679	656.310	R210	-54	474.910	2	674	454.170
L211	-51	053.240	2	679	597.740	R211	-54	559.910	2	674	373.140
L212	-51	107.100	2	679	523.010	R212	-54	650.530	2	674	305.340
L213	-51	335.350	2	679	172.170	R213	-54	795.230	2	674	220.070
L214	-51	600.360	2	678	765.490	R214	-54	798.710	2	674	218.670
L215	-51	832.270	2	678	410.190	R215	-55	088.350	2	674	049.440
L216	-52	102.570	2	677	995.200	R216	-55	532.160	2	673	790.450
L217	-52	338.990	2	677	631.970	R217	-56	063.160	2	673	480.260
L218	-52	650.450	2	677	154.620	R218	-56	156.330	2	673	416.700
L219	-52	942.060	2	676	707.280	R219	-56	234.590	2	673	358.080
L220	-53	185.720	2	676	333.610	R220	-56	792.310	2	672	918.950
L221	-53	436.790	2	675	948.250	R221	-57	307.090	2	672	513.900
L222	-53	743.980	2	675	477.080	R222	-57	782.350	2	672	141.030
L223	-54	025.180	2	675	045.650	R223	-58	200.910	2	671	811.470
L224	-54	336.940	2	674	567.180	R224	-58	240.470	2	671	797.430
L225	-54	360.950	2	674	533.300	R225	-58	260.730	2	671	764.920
L226	-54	437.070	2	674	438.150	R226	-58	283.720	2	671	746.830
L227	-54	487.010	2	674	386.220	R227	-58	336.960	2	671	705.010
L228	-54	531.010	2	674	346.380	R228	-58	726.710	2	671	397.930
L229	-54	574.000	2	674	312.060	R229	-59	106.560	2	671	099.610
L230	-54	629.000	2	674	272.910	R230	-59	431.550	2	670	844.130
L231	-54	781.380	2	674	182.080	R231	-59	895.490	2	670	479.390
L232	-55	066.370	2	674	017.380	R232	-60	308.810	2	670	153.710
L233	-55	512.090	2	673	755.890	R233	-60	497.100	2	670	006.770
L234	-56	046.420	2	673	443.820	R234	-60	896.920	2	669	692.270
L235	-56	095.660	2	673	410.150	R235	-61	327.560	2	669	353.430
L236	-56	205.910	2	673	330.100	R236	-61	662.810	2	669	089.930
L237	-56	769.020	2	672	886.620	R237	-62	078.950	2	668	761.960
L238	-57	282.090	2	672	482.910	R238	-62	170.840	2	668	676.030
L239	-57	754.410	2	672	111.250	R239	-62	245.470	2	668	600.100
L240	-58	184.990	2	671	773.400	R240	-62	311.820	2	668	521.790
L241	-58	214.170	2	671	734.040	R241	-62	459.650	2	668	339.480
L242	-58	237.230	2	671	713.270	R242	-62	843.150	2	667	867.830
L243	-58	278.310	2	671	698.000	R243	-63	042.870	2	667	621.000
L244	-58	705.830	2	671	363.700	R244	-63	381.500	2	667	203.770
L245	-59	079.430	2	671	069.970	R245	-63	678.480	2	666	837.480
L246	-59	408.330	2	670	811.450	R246	-63	706.740	2	666	802.670
L247	-59	868.370	2	670	449.600	R247	-64	092.200	2	666	327.730
L248	-60	281.970	2	670	124.850	R248	-64	154.860	2	666	321.300
L249	-60	469.250	2	669	977.260	R249	-64	177.800	2	666	291.610
L250	-60	872.910	2	669	659.670	R250	-64	149.910	2	666	269.650
L251	-61	300.670	2	669	323.550	R251	-64	114.020	2	666	239.000
L252	-61	633.190	2	669	062.070	R252	-64	034.640	2	666	170.640
L253	-61	998.570	2	668	774.620	R253	-63	922.530	2	666	068.310
L254	-62	053.890	2	668	729.280	R254	-63	813.790	2	665	962.270
L255	-62	099.570	2	668	689.080	R255	-63	718.060	2	665	863.080

Vel	24	Van	30	P755/09
Sheet		of		

PADRESERWE KOÖRDINATE				/	ROAD RESERVE CO-ORDINATES			
LINKERKANT/LEFT HAND SIDE					REGTERKANT/RIGHT HAND SIDE			
	Y	X	WG	27°	Y	X		
L256	-62 141.790	2 668 649.170		R256	-63 633.910	2 665 768.560		
L257	-62 184.350	2 668 606.080		R257	-63 607.540	2 665 739.730		
L258	-62 235.810	2 668 550.510		R258	-63 509.940	2 665 623.250		
L259	-62 280.200	2 668 497.040		R259	-63 452.540	2 665 550.960		
L260	-62 427.390	2 668 315.880		R260	-61 351.560	2 662 847.680		
L261	-62 805.570	2 667 850.300		R261	-61 036.820	2 662 443.560		
L262	-62 812.450	2 667 841.730		R262	-60 695.250	2 662 004.190		
L263	-63 010.030	2 667 598.280		R263	-60 401.770	2 661 689.840		
L264	-63 349.820	2 667 179.260		R264	-59 837.150	2 661 088.700		
L265	-63 676.010	2 666 777.890		R265	-59 832.160	2 661 091.030		
L266	-64 062.310	2 666 301.370		R266	-59 687.840	2 660 936.180		
L267	-64 055.910	2 666 239.360		R267	-59 687.050	2 660 928.430		
L268	-63 964.000	2 666 158.460		R268	-59 298.520	2 660 506.590		
L269	-63 850.470	2 666 051.910		R269	-59 229.500	2 660 421.700		
L270	-63 726.630	2 665 927.930		R270	-58 634.740	2 659 658.260		
L271	-63 629.430	2 665 827.810		R271	-58 573.530	2 659 558.000		
L272	-63 480.230	2 665 647.780		R272	-58 542.890	2 659 474.750		
L273	-63 126.010	2 665 192.170		R273	-58 529.770	2 659 417.110		
L274	-62 819.480	2 664 797.880		R274	-58 522.840	2 659 329.280		
L275	-62 513.270	2 664 403.810		R275	-58 542.950	2 659 191.510		
L276	-62 207.740	2 664 010.900		R276	-58 571.360	2 659 111.830		
L277	-61 886.260	2 663 597.160		R277	-58 605.110	2 659 049.790		
L278	-61 570.190	2 663 190.730		R278	-58 654.140	2 658 984.080		
L279	-61 322.760	2 662 872.200		R279	-59 684.500	2 657 806.600		
L280	-61 010.080	2 662 470.070		R280	-60 055.720	2 657 382.300		
L281	-60 753.240	2 662 139.990		R281	-60 391.380	2 656 998.820		
L282	-60 672.150	2 662 040.050		R282	-60 565.910	2 656 799.480		
L283	-60 571.980	2 661 927.680		R283	-60 592.070	2 656 769.600		
L284	-60 401.890	2 661 746.230		R284	-60 741.820	2 656 598.550		
L285	-60 276.070	2 661 610.420		R285	-60 980.070	2 656 326.040		
L286	-59 834.390	2 661 140.710		R286	-61 320.350	2 655 750.720		
L287	-59 307.720	2 660 578.940		R287	-61 620.050	2 655 243.310		
L288	-59 295.700	2 660 566.520		R288	-61 894.250	2 654 778.620		
L289	-59 199.400	2 660 444.380		R289	-62 082.810	2 654 460.420		
L290	-58 879.970	2 660 034.270		R290	-62 125.110	2 654 358.450		
L291	-58 585.230	2 659 655.610		R291	-62 157.150	2 654 242.450		
L292	-58 534.570	2 659 569.400		R292	-62 192.850	2 653 645.520		
L293	-58 496.800	2 659 460.050		R293	-62 222.430	2 653 135.200		
L294	-58 486.300	2 659 367.880		R294	-62 258.850	2 652 515.530		
L295	-58 486.050	2 659 361.990		R295	-62 263.910	2 652 423.430		
L296	-58 485.770	2 659 335.020		R296	-62 238.790	2 652 246.530		
L297	-58 485.040	2 659 265.830		R297	-62 206.130	2 652 016.510		
L298	-58 510.520	2 659 154.450		R298	-62 199.150	2 651 912.470		
L299	-58 569.140	2 659 024.060		R299	-62 198.340	2 651 891.970		
L300	-58 973.510	2 658 561.900		R300	-62 201.560	2 651 846.700		
L301	-59 319.110	2 658 166.890		R301	-62 223.500	2 651 719.460		
L302	-59 682.060	2 657 752.190		R302	-62 279.250	2 651 573.860		
L303	-60 024.810	2 657 360.670		R303	-62 285.710	2 651 563.200		
L304	-60 361.050	2 656 976.700		R304	-62 335.190	2 651 481.460		
L305	-60 391.250	2 656 942.190		R305	-62 391.010	2 651 411.620		
L306	-60 534.790	2 656 778.170		R306	-62 433.260	2 651 368.560		

Vel 25 Van 30 P755/09
Sheet of

PADRESERWE KOÖRDINATE				/	ROAD RESERVE CO-ORDINATES			
LINKERKANT/LEFT HAND SIDE					REGTERKANT/RIGHT HAND SIDE			
	Y	X	WG	27°	Y	X		
L307	-60 618.930	2 656 682.020		R307	-62 607.330	2 651 205.300		
L308	-60 716.830	2 656 570.150		R308	-62 868.870	2 650 960.020		
L309	-60 876.050	2 656 388.270		R309	-62 886.950	2 650 943.510		
L310	-60 932.830	2 656 318.500		R310	-62 893.080	2 650 937.720		
L311	-61 006.490	2 656 207.910		R311	-62 975.030	2 650 860.280		
L312	-61 287.620	2 655 731.140		R312	-62 977.340	2 650 858.100		
L313	-61 291.680	2 655 732.970		R313	-63 043.120	2 650 770.170		
L314	-61 359.080	2 655 614.340		R314	-63 094.460	2 650 690.900		
L315	-61 357.760	2 655 613.610		R315	-63 315.090	2 650 132.620		
L316	-61 590.320	2 655 219.440		R316	-63 437.040	2 649 824.610		
L317	-61 861.130	2 654 761.140		R317	-63 510.100	2 649 640.080		
L318	-62 022.800	2 654 487.450		R318	-63 617.660	2 649 367.730		
L319	-62 075.740	2 654 378.800		R319	-63 649.940	2 649 285.980		
L320	-62 103.010	2 654 295.080		R320	-63 915.690	2 648 614.610		
L321	-62 125.250	2 654 152.260		R321	-64 087.260	2 648 181.360		
L322	-62 154.700	2 653 644.390		R322	-64 108.360	2 648 123.690		
L323	-62 184.750	2 653 133.190		R323	-64 127.510	2 648 063.170		
L324	-62 221.000	2 652 513.910		R324	-64 145.150	2 648 002.740		
L325	-62 221.190	2 652 492.430		R325	-64 160.540	2 647 941.860		
L326	-62 221.980	2 652 444.690		R326	-64 174.410	2 647 876.360		
L327	-62 213.670	2 652 334.710		R327	-64 199.000	2 647 748.740		
L328	-62 202.560	2 652 256.990		R328	-64 316.770	2 647 144.900		
L329	-62 156.220	2 651 929.730		R329	-64 427.720	2 646 557.630		
L330	-62 157.570	2 651 892.480		R330	-64 430.530	2 646 532.240		
L331	-62 162.280	2 651 843.210		R331	-64 430.090	2 646 532.390		
L332	-62 178.220	2 651 743.040		R332	-64 433.220	2 646 400.370		
L333	-62 187.100	2 651 711.080		R333	-64 420.860	2 646 271.930		
L334	-62 203.010	2 651 653.860		R334	-64 392.430	2 646 142.920		
L335	-62 243.480	2 651 556.600		R335	-64 356.880	2 646 043.750		
L336	-62 279.900	2 651 496.040		R336	-64 313.770	2 645 943.420		
L337	-62 311.570	2 651 448.820		R337	-64 255.320	2 645 846.790		
L338	-62 363.190	2 651 383.070		R338	-64 190.430	2 645 755.590		
L339	-62 558.980	2 651 199.180		R339	-64 042.760	2 645 594.980		
L340	-62 887.890	2 650 890.280		R340	-64 040.410	2 645 594.110		
L341	-62 895.270	2 650 883.350		R341	-63 544.650	2 645 065.420		
L342	-62 920.030	2 650 857.530		R342	-63 518.180	2 645 034.910		
L343	-62 924.760	2 650 851.990		R343	-63 483.110	2 644 981.930		
L344	-63 009.410	2 650 752.760		R344	-63 457.770	2 644 929.730		
L345	-63 087.830	2 650 605.580		R345	-63 438.990	2 644 872.780		
L346	-63 279.160	2 650 121.010		R346	-63 426.040	2 644 785.740		
L347	-63 392.810	2 649 834.140		R347	-63 427.080	2 644 739.580		
L348	-63 474.150	2 649 628.800		R348	-63 427.210	2 644 733.990		
L349	-63 493.000	2 649 581.210		R349	-63 439.750	2 644 655.660		
L350	-63 615.820	2 649 270.700		R350	-63 590.730	2 644 066.790		
L351	-64 077.030	2 648 103.970		R351	-63 616.500	2 643 975.770		
L352	-64 095.370	2 648 039.080		R352	-63 652.040	2 643 864.900		
L353	-64 137.420	2 647 867.290		R353	-63 837.220	2 643 391.920		
L354	-64 154.670	2 647 779.260		R354	-64 042.140	2 642 860.240		
L355	-64 281.520	2 647 124.260		R355	-64 205.060	2 642 441.370		
L356	-64 375.250	2 646 640.470		R356	-64 466.550	2 641 761.950		
L357	-64 388.540	2 646 546.360		R357	-64 485.800	2 641 735.620		

Vel	26	Van	30	P755/09
Sheet		of		

PADRESERWE KOÖRDINATE				/ ROAD RESERVE CO-ORDINATES			
LINKERKANT/LEFT HAND SIDE				REGTERKANT/RIGHT HAND SIDE			
	Y	X	WG 27°		Y	X	
L358	-64 390.000	2 646 532.490		R358	-64 525.970	2 641 680.370	
L359	-64 393.640	2 646 394.930		R359	-64 589.780	2 641 627.150	
L360	-64 384.710	2 646 298.530		R360	-64 635.490	2 641 598.010	
L361	-64 357.600	2 646 179.090		R361	-64 679.820	2 641 578.270	
L362	-64 298.090	2 646 002.060		R362	-64 753.020	2 641 562.540	
L363	-64 221.680	2 645 865.080		R363	-64 809.720	2 641 555.710	
L364	-64 156.780	2 645 776.560		R364	-64 865.230	2 641 559.270	
L365	-64 057.040	2 645 666.600		R365	-65 565.250	2 641 800.590	
L366	-63 961.740	2 645 565.130		R366	-65 598.510	2 641 802.930	
L367	-63 497.630	2 645 070.330		R367	-65 688.150	2 641 807.780	
L368	-63 467.540	2 645 028.160		R368	-65 744.460	2 641 794.010	
L369	-63 434.520	2 644 980.350		R369	-65 854.710	2 641 723.830	
L370	-63 396.050	2 644 851.490		R370	-66 041.350	2 641 502.280	
L371	-63 387.790	2 644 797.340		R371	-66 131.040	2 641 446.110	
L372	-63 388.260	2 644 722.350		R372	-66 135.990	2 641 445.050	
L373	-63 388.120	2 644 713.140		R373	-66 229.460	2 641 424.990	
L374	-63 402.890	2 644 647.280		R374	-66 299.240	2 641 410.020	
L375	-63 476.190	2 644 368.610		R375	-66 385.040	2 641 353.180	
L376	-63 486.980	2 644 320.870		R376	-66 423.660	2 641 301.860	
L377	-63 562.340	2 644 030.520		R377	-66 470.430	2 641 192.940	
L378	-63 596.510	2 643 916.070		R378	-66 497.820	2 641 123.750	
L379	-63 619.910	2 643 850.980		R379	-66 502.020	2 641 124.060	
L380	-64 170.390	2 642 423.330		R380	-66 513.480	2 641 099.680	
L381	-64 413.630	2 641 792.920		R381	-66 535.640	2 641 043.370	
L382	-64 468.610	2 641 692.470		R382	-66 555.360	2 640 960.110	
L383	-64 528.210	2 641 629.020		R383	-66 557.110	2 640 878.600	
L384	-64 595.810	2 641 577.120		R384	-66 538.400	2 640 758.930	
L385	-64 648.910	2 641 541.660		R385	-66 502.690	2 640 614.930	
L386	-64 776.150	2 641 504.430		R386	-66 470.530	2 640 485.250	
L387	-64 798.270	2 641 495.960		R387	-66 470.180	2 640 472.110	
L388	-64 875.180	2 641 519.620		R388	-66 492.160	2 640 373.070	
L389	-64 928.810	2 641 529.750		R389	-66 585.520	2 640 259.160	
L390	-65 523.560	2 641 745.340		R390	-66 684.030	2 640 148.130	
L391	-65 576.470	2 641 762.160		R391	-66 733.160	2 640 106.480	
L392	-65 692.310	2 641 754.950		R392	-66 793.160	2 640 055.620	
L393	-65 758.330	2 641 729.730		R393	-66 862.860	2 640 017.390	
L394	-65 776.800	2 641 733.160		R394	-66 859.650	2 640 012.070	
L395	-65 805.590	2 641 718.190		R395	-66 920.670	2 639 982.860	
L396	-65 824.220	2 641 700.610		R396	-67 019.790	2 639 963.030	
L397	-65 853.630	2 641 669.490		R397	-67 145.930	2 639 958.920	
L398	-66 047.090	2 641 436.200		R398	-67 179.730	2 639 955.780	
L399	-66 129.540	2 641 410.100		R399	-67 205.970	2 639 946.710	
L400	-66 155.450	2 641 401.320		R400	-67 211.480	2 639 952.080	
L401	-66 201.020	2 641 392.710		R401	-67 233.170	2 639 940.770	
L402	-66 289.640	2 641 373.670		R402	-67 285.150	2 639 883.230	
L403	-66 345.140	2 641 337.250		R403	-67 286.260	2 639 830.250	
L404	-66 381.310	2 641 287.850		R404	-67 272.660	2 639 464.610	
L405	-66 404.280	2 641 241.610		R405	-67 265.560	2 639 262.140	
L406	-66 400.530	2 641 238.030		R406	-67 264.770	2 639 091.900	
L407	-66 420.510	2 641 209.720		R407	-67 299.510	2 638 432.060	
L408	-66 430.760	2 641 172.710		R408	-67 311.950	2 638 278.080	

Vel	27	Van	30	P755/09
Sheet		of		

PADRESERWE KOÖRDINATE				/	ROAD RESERVE CO-ORDINATES			
LINKERKANT/LEFT HAND SIDE					REGTERKANT/RIGHT HAND SIDE			
	Y	X	WG	27°	Y	X		
L409	-66 453.130	2 641	149.230	R409	-67 345.250	2 638	129.280	
L410	-66 479.160	2 641	090.490	R410	-67 380.590	2 637	984.290	
L411	-66 517.550	2 640	956.300	R411	-67 437.070	2 637	842.300	
L412	-66 502.600	2 640	767.030	R412	-67 475.140	2 637	761.540	
L413	-66 469.010	2 640	623.250	R413	-67 505.780	2 637	710.420	
L414	-66 434.790	2 640	533.130	R414	-67 531.280	2 637	671.630	
L415	-66 438.980	2 640	414.110	R415	-67 588.740	2 637	583.910	
L416	-66 457.850	2 640	355.060	R416	-67 734.360	2 637	408.480	
L417	-66 557.900	2 640	231.470	R417	-67 799.100	2 637	350.580	
L418	-66 687.890	2 640	092.560	R418	-67 884.800	2 637	279.990	
L419	-66 851.280	2 639	975.820	R419	-68 328.610	2 636	977.670	
L420	-66 930.390	2 639	938.620	R420	-68 345.140	2 636	966.410	
L421	-67 011.810	2 639	922.590	R421	-68 815.770	2 636	646.050	
L422	-67 169.970	2 639	917.720	R422	-68 981.240	2 636	529.840	
L423	-67 219.160	2 639	903.640	R423	-69 189.450	2 636	387.720	
L424	-67 246.630	2 639	841.940	R424	-69 245.680	2 636	344.900	
L425	-67 250.310	2 639	833.670	R425	-69 251.240	2 636	340.670	
L426	-67 236.930	2 639	450.200	R426	-69 286.210	2 636	312.240	
L427	-67 229.570	2 639	263.130	R427	-69 358.660	2 636	254.080	
L428	-67 228.760	2 639	087.620	R428	-69 497.960	2 636	094.370	
L429	-67 236.280	2 638	940.520	R429	-69 854.000	2 635	648.780	
L430	-67 256.550	2 638	547.060	R430	-69 857.020	2 635	657.100	
L431	-67 266.540	2 638	350.560	R431	-70 235.700	2 635	186.220	
L432	-67 284.740	2 638	196.910	R432	-70 632.760	2 634	687.810	
L433	-67 300.360	2 638	096.550	R433	-70 972.530	2 634	260.670	
L434	-67 371.540	2 637	900.900	R434	-71 282.600	2 633	879.190	
L435	-67 415.570	2 637	798.430	R435	-71 611.200	2 633	462.460	
L436	-67 501.290	2 637	641.430	R436	-71 960.040	2 633	022.170	
L437	-67 651.340	2 637	443.700	R437	-72 240.410	2 632	671.230	
L438	-67 677.380	2 637	417.290	R438	-72 619.800	2 632	217.620	
L439	-67 760.080	2 637	333.430	R439	-72 614.390	2 632	210.880	
L440	-67 883.270	2 637	233.780	R440	-72 618.430	2 632	206.060	
L441	-67 890.650	2 637	227.420	R441	-72 800.840	2 632	121.220	
L442	-68 305.330	2 636	945.080	R442	-73 669.810	2 631	958.200	
L443	-68 783.660	2 636	618.880	R443	-73 821.310	2 631	943.370	
L444	-69 139.670	2 636	376.490	R444	-74 120.670	2 631	974.140	
L445	-69 258.810	2 636	285.970	R445	-74 176.140	2 631	973.700	
L446	-69 369.440	2 636	183.430	R446	-74 240.000	2 631	964.120	
L447	-69 445.570	2 636	098.670	R447	-74 332.800	2 631	935.770	
L448	-69 468.620	2 636	071.270	R448	-74 410.880	2 631	900.000	
L449	-69 838.420	2 635	605.960	R449	-74 514.000	2 631	821.420	
L450	-70 195.480	2 635	159.320	R450	-74 583.610	2 631	738.290	
L451	-70 569.830	2 634	689.670	R451	-74 619.950	2 631	669.400	
L452	-70 928.220	2 634	240.040	R452	-74 636.500	2 631	588.520	
L453	-71 248.340	2 633	838.540	R453	-74 642.760	2 631	474.380	
L454	-71 572.500	2 633	432.330	R454	-74 610.100	2 631	371.870	
L455	-71 922.320	2 632	993.580	R455	-74 390.250	2 630	877.080	
L456	-72 197.050	2 632	649.140	R456	-74 369.830	2 630	778.000	
L457	-72 393.990	2 632	401.310	R457	-74 337.330	2 630	083.860	
L458	-72 539.500	2 632	220.010	R458	-74 343.530	2 629	875.000	
L459	-72 586.470	2 632	176.060	R459	-74 351.220	2 629	815.910	

Vel	28	Van	30	P755/09
Sheet		of		

PADRESERWE KOÖRDINATE				/	ROAD RESERVE CO-ORDINATES				
LINKERKANT/LEFT HAND SIDE					REGTERKANT/RIGHT HAND SIDE				
	Y	X	WG	27°	Y	X			
L460	-72 587.440	2 632 177.270		R460	-74 370.120	2 629 741.080			
L461	-72 621.250	2 632 154.920		R461	-74 402.710	2 629 660.920			
L462	-72 665.200	2 632 124.160		R462	-74 439.800	2 629 569.680			
L463	-72 760.170	2 632 090.890		R463	-74 530.720	2 629 422.660			
L464	-73 752.730	2 631 905.320		R464	-74 576.170	2 629 321.320			
L465	-73 871.400	2 631 909.020		R465	-74 621.020	2 629 176.470			
L466	-73 971.900	2 631 919.610		R466	-74 676.260	2 628 701.270			
L467	-74 105.410	2 631 916.760		R467	-74 721.400	2 628 303.250			
L468	-74 294.200	2 631 892.640		R468	-74 737.420	2 628 169.070			
L469	-74 420.480	2 631 836.680		R469	-74 747.270	2 628 091.460			
L470	-74 502.220	2 631 755.830		R470	-74 787.910	2 627 968.490			
L471	-74 575.490	2 631 638.960		R471	-74 848.190	2 627 832.620			
L472	-74 594.430	2 631 525.100		R472	-75 033.610	2 627 523.170			
L473	-74 562.810	2 631 359.120		R473	-75 062.790	2 627 474.480			
L474	-74 512.760	2 631 251.560		R474	-75 289.430	2 627 099.100			
L475	-74 357.130	2 630 917.160		R475	-75 319.620	2 627 049.100			
L476	-74 334.240	2 630 825.970		R476	-75 329.280	2 627 026.260			
L477	-74 297.280	2 630 037.290		R477	-75 374.690	2 626 896.140			
L478	-74 297.980	2 629 932.930		R478	-75 393.120	2 626 765.450			
L479	-74 313.300	2 629 797.000		R479	-75 396.680	2 626 708.060			
L480	-74 349.160	2 629 685.350		R480	-75 428.440	2 626 187.770			
L481	-74 360.880	2 629 647.620		R481	-75 429.110	2 626 174.570			
L482	-74 395.800	2 629 576.140		R482	-75 454.530	2 625 763.420			
L483	-74 439.540	2 629 498.750		R483	-75 467.130	2 625 577.110			
L484	-74 539.660	2 629 308.380		R484	-75 477.220	2 625 396.380			
L485	-74 580.670	2 629 168.600		R485	-75 493.030	2 625 165.550			
L486	-74 593.580	2 629 088.710		R486	-75 509.720	2 624 918.900			
L487	-74 637.160	2 628 708.160		R487	-75 538.150	2 624 775.220			
L488	-74 681.640	2 628 320.230		R488	-75 639.130	2 624 430.090			
L489	-74 686.540	2 628 280.010		R489	-75 681.070	2 624 277.460			
L490	-74 707.900	2 628 095.560		R490	-75 682.540	2 624 267.000			
L491	-74 735.250	2 628 008.710		R491	-75 696.660	2 624 101.310			
L492	-74 780.880	2 627 869.280		R492	-75 669.760	2 623 821.190			
L493	-75 013.930	2 627 483.650		R493	-75 634.370	2 623 447.590			
L494	-75 086.610	2 627 361.860		R494	-75 610.710	2 623 199.560			
L495	-75 233.430	2 627 119.820		R495	-75 606.190	2 623 158.660			
L496	-75 272.030	2 627 057.450		R496	-75 592.470	2 623 011.690			
L497	-75 296.870	2 626 997.870		R497	-75 571.650	2 622 795.820			
L498	-75 339.180	2 626 858.900		R498	-75 516.940	2 622 462.900			
L499	-75 356.440	2 626 752.670		R499	-75 487.870	2 622 284.330			
L500	-75 357.650	2 626 733.870		R500	-75 477.790	2 622 224.960			
L501	-75 390.540	2 626 197.090		R501	-75 445.170	2 622 022.820			
L502	-75 390.420	2 626 193.660		R502	-75 435.170	2 621 927.780			
L503	-75 416.210	2 625 776.550		R503	-75 435.040	2 621 927.010			
L504	-75 428.290	2 625 581.180		R504	-75 429.570	2 621 859.660			
L505	-75 438.810	2 625 409.550		R505	-75 430.880	2 621 761.430			
L506	-75 453.170	2 625 178.540		R506	-75 449.680	2 621 606.400			
L507	-75 464.220	2 624 997.750		R507	-75 497.690	2 621 347.380			
L508	-75 472.220	2 624 916.740		R508	-75 562.850	2 620 993.450			
L509	-75 489.660	2 624 808.340		R509	-75 566.270	2 620 981.420			
L510	-75 595.230	2 624 445.070		R510	-75 591.630	2 620 912.340			
					Vel	29	Van	30	P755/09
					Sheet		of		

PADRESERWE KOÖRDINATE				/	ROAD RESERVE CO-ORDINATES			
LINKERKANT/LEFT HAND SIDE					REGTERKANT/RIGHT HAND SIDE			
	Y	X	WG	27°	Y	X		
L511	-75 639.190	2 624	281.790	R511	-75 637.920	2 620	862.480	
L512	-75 652.700	2 624	180.000	R512	-75 637.920	2 620	862.240	
L513	-75 655.250	2 624	098.200					
L514	-75 651.330	2 624	019.970					
L515	-75 633.600	2 623	833.930					
L516	-75 598.150	2 623	460.500					
L517	-75 574.090	2 623	212.670					
L518	-75 555.870	2 623	024.870					
L519	-75 535.400	2 622	818.030					
L520	-75 481.710	2 622	474.520					
L521	-75 452.350	2 622	298.860					
L522	-75 441.860	2 622	236.810					
L523	-75 407.820	2 622	028.610					
L524	-75 395.780	2 621	938.860					
L525	-75 393.080	2 621	915.200					
L526	-75 391.450	2 621	837.880					
L527	-75 393.400	2 621	760.010					
L528	-75 403.010	2 621	651.920					
L529	-75 457.800	2 621	356.570					
L530	-75 493.340	2 621	166.730					
L531	-75 524.900	2 621	001.520					
L532	-75 551.810	2 620	856.190					

Vel	30	Van	30
Sheet		of	

P755/09