

# Government Gazette

## Staatskoerant

REPUBLIC OF SOUTH AFRICA  
REPUBLIEK VAN SUID-AFRIKA

Vol. 545

Pretoria, 12 November 2010

**No. 33702**

**IMPORTANT NOTICE**

The Government Printing Works will not be held responsible for faxed documents not received due to errors on the fax machine or faxes received which are unclear or incomplete. Please be advised that an "OK" slip, received from a fax machine, will not be accepted as proof that documents were received by the GPW for printing. If documents are faxed to the GPW it will be the sender's responsibility to phone and confirm that the documents were received in good order.

Furthermore the Government Printing Works will also not be held responsible for cancellations and amendments which have not been done on original documents received from clients.

**CONTENTS****INHOUD**

<i>No.</i>	<i>Page No.</i>	<i>Gazette No.</i>	<i>No.</i>	<i>Bladsy No.</i>	<i>Koerant No.</i>
<b>GOVERNMENT NOTICE</b>			<b>GOEWERMENTSKENNISGEWING</b>		
<b>Transport, Department of</b>			<b>Vervoer, Departement van</b>		
<i>Government Notice</i>			<i>Goewermentskennisgewing</i>		
990			990		
South African National Roads Agency Limited and the National Roads Act (7/1998): The South African National Roads Agency Limited: Declaration amendment of National Road R33 Section 7: Amendment of Declaration No. 174 of 2007 .....	3	33702	Suid-Afrikaanse Nasionale Padagentskap Beperk en die Nasionale Paaie Wet (7/1998): Die Suid-Afrikaanse Nasionale Padagentskap Beperk: Verklaring wysiging van Nasionale Pad R33 Seksie 7: Wysiging van Verklaring No. 174 van 2007 .....	4	33702

---

**GOVERNMENT NOTICE**

---

**DEPARTMENT OF TRANSPORT**

No. 990

12 November 2010

**THE SOUTH AFRICAN NATIONAL ROADS  
AGENCY LIMITED**Registration No: 98/09584/06

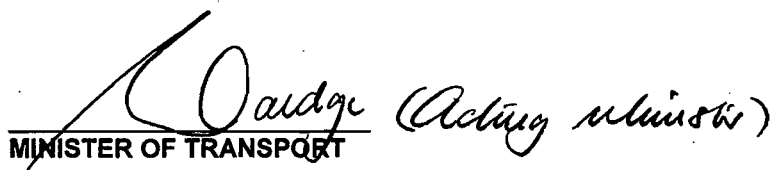
---

**DECLARATION AMENDMENT OF NATIONAL ROAD R33 SECTION 7**

AMENDMENT OF DECLARATION No. 174 OF 2007

By virtue of section 40(1)(b) of the South African National Roads Agency Limited and the National Roads Act, 1998 (Act No. 7 of 1998), I hereby amend Declaration No. 174 of 2007 by substituting Annexure paragraph (V) the section of the descriptive declaration of the route from Amsterdam up to the N17, with the subjoined sheets 1 to 15 of Plan No. P768/09.

**(National Road R33 Section 7: Amsterdam – N17)**

  
MINISTER OF TRANSPORT

---

## GOEWERMENTSKENNISGEWING

---

### DEPARTEMENT VAN VERVOER

No. 990

12 November 2010

## DIE SUID-AFRIKAANSE NASIONALE PADAGENTSKAP BEPERK

Registrasie No: 98/09584/06

---

### VERKLARING WYSIGING VAN NASIONALE PAD R33 SEKSIE 7.

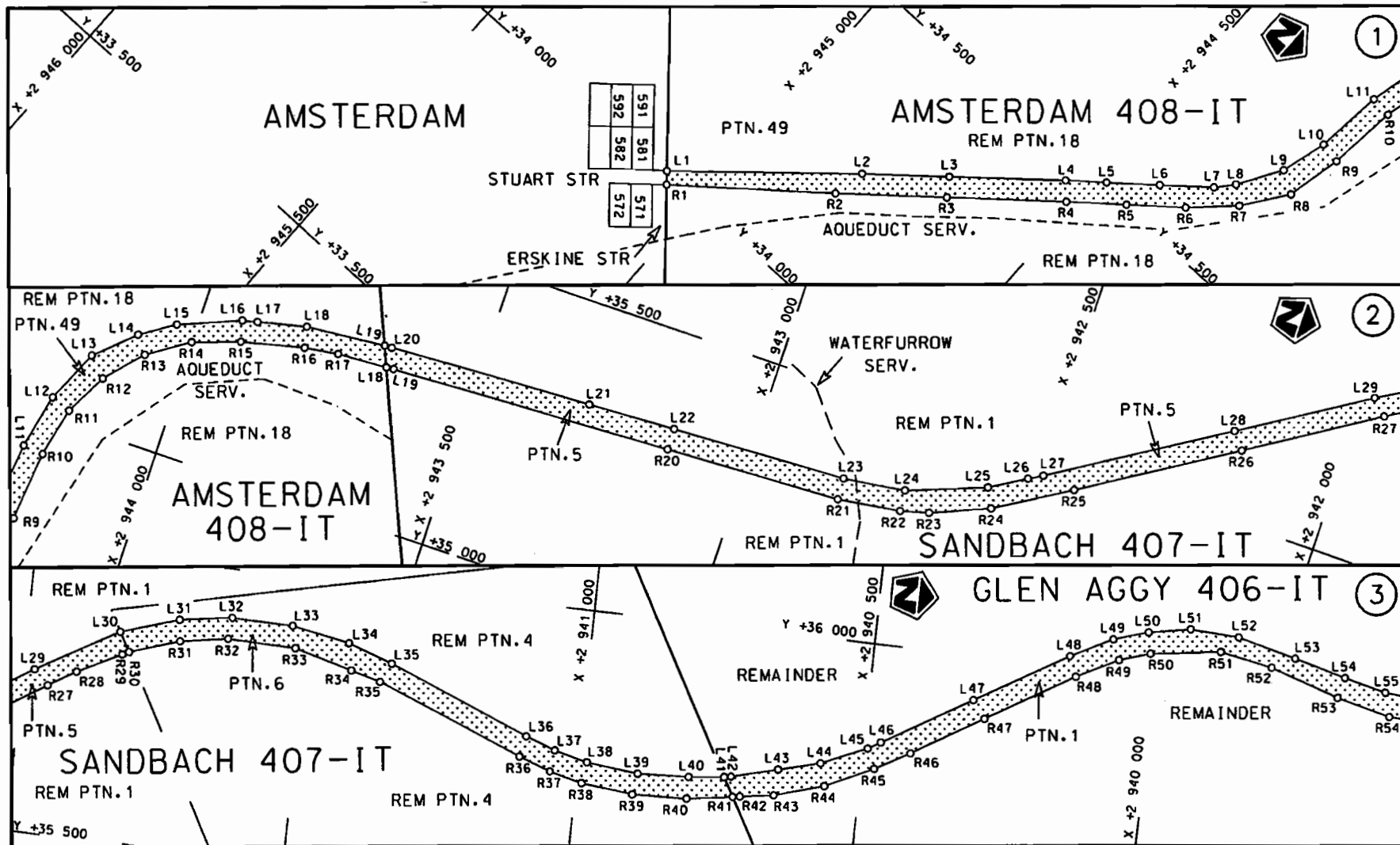
WYSIGING VAN VERKLARING NO. 174 VAN 2007.


Kragtens Artikel 40(1)(b) van die Suid-Afrikaanse Nasionale Padagentskap Beperk en die Nasionale Paaie Wet, 1998 (Wet no. 7 van 1998), wysig ek hiermee Verklaring no. 174 van 2007 deur die Bylae paragraaf (V) die gedeelte van die beskrywende verklaring van die roete vanaf Amsterdam tot by die N17, te vervang met meegaande velle 1 tot 15 van Plan no. P768/09.

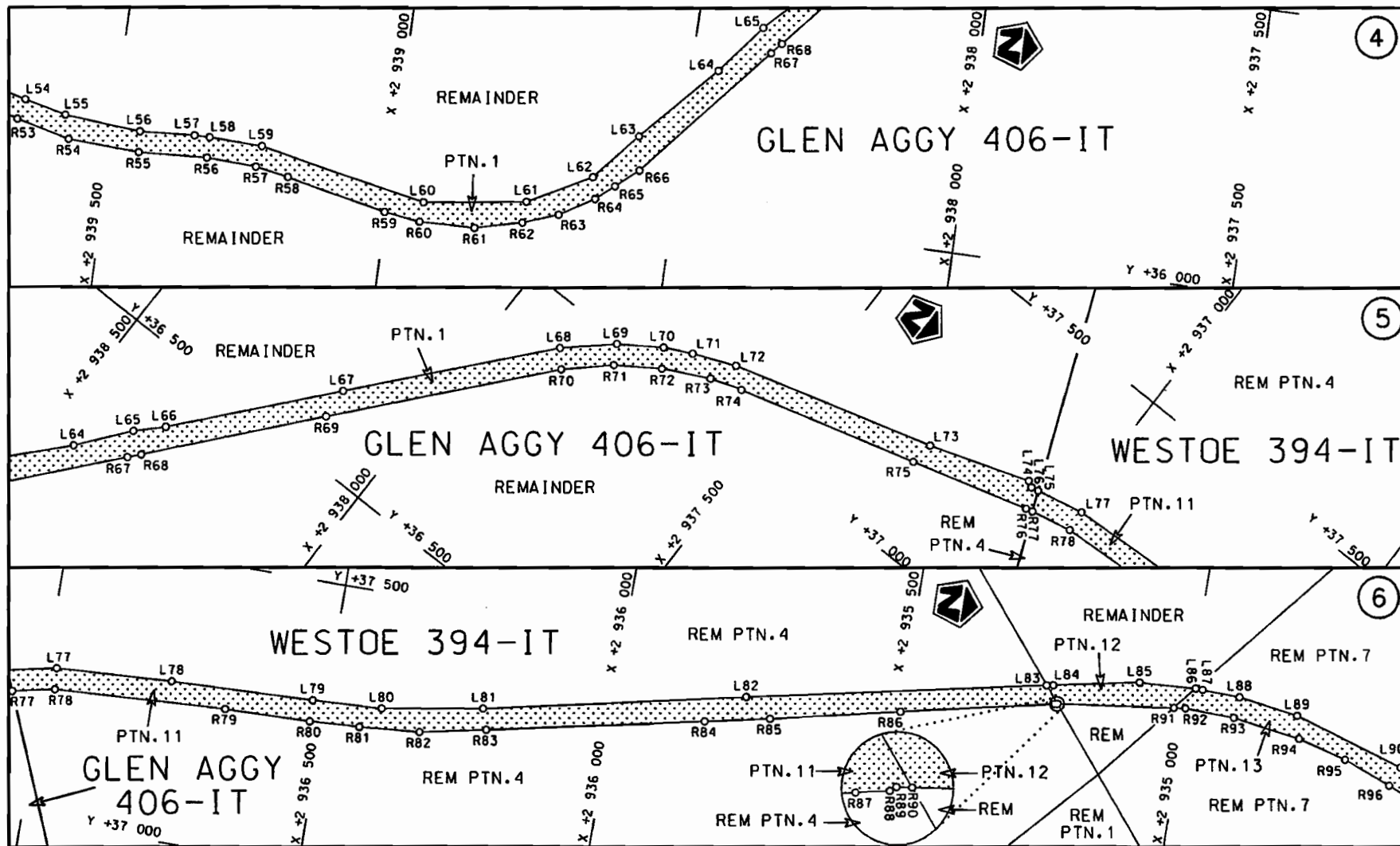
(Nasionale Pad R33 Seksie 7: Amsterdam – N17)

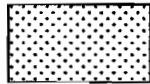
  
MINISTER VAN VERVOER

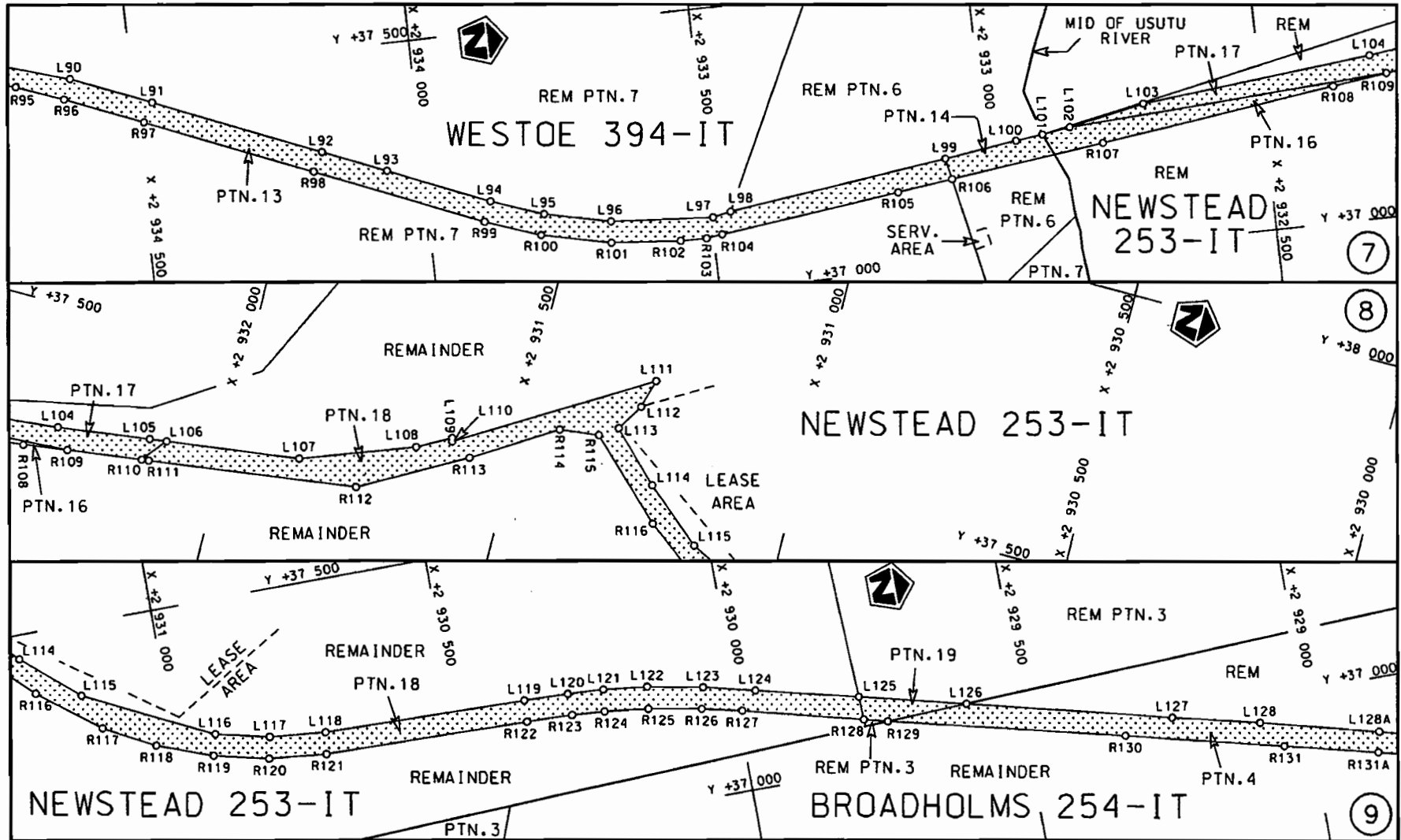
(Acting Minister)

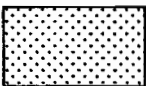


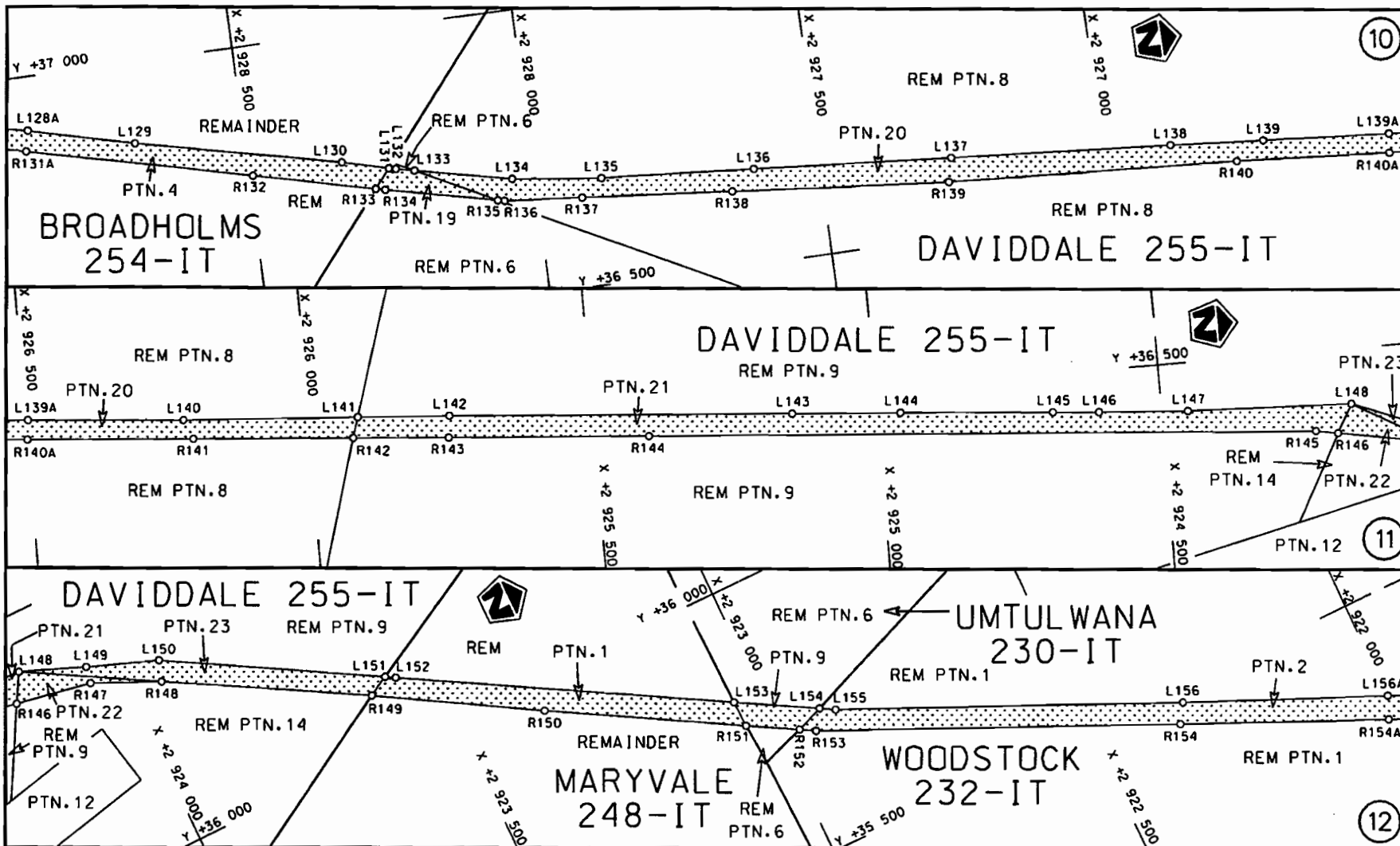
Die Suid Afrikaanse Nasionale Padogenskap Beperk The South African National Roads Agency Limited	Die figuur getoon The figure shown		steldie padreserve voor van 'n gedeelte represents the road reserve of a portion van Nasionale Roete R33 Seksie of National Route 7 Section	Vel Sheet 1 van 15 Plan P768/09
---	---------------------------------------	---	--	------------------------------------




<p>Die Suid Afrikaanse Nasionale Padagentskop Beperk The South African National Roads Agency Limited</p>	<p>Die figuur getoon The figure shown</p> 	<p>steldie padreserwe voor van 'n gedeelte represents the road reserve of a portion van Nasionale Roete R33 Sektie 7 of National Route R33 Section 7</p>	<p>Vel Sheet 2 van of 15 Plan P768/09</p>
--	---	--	---

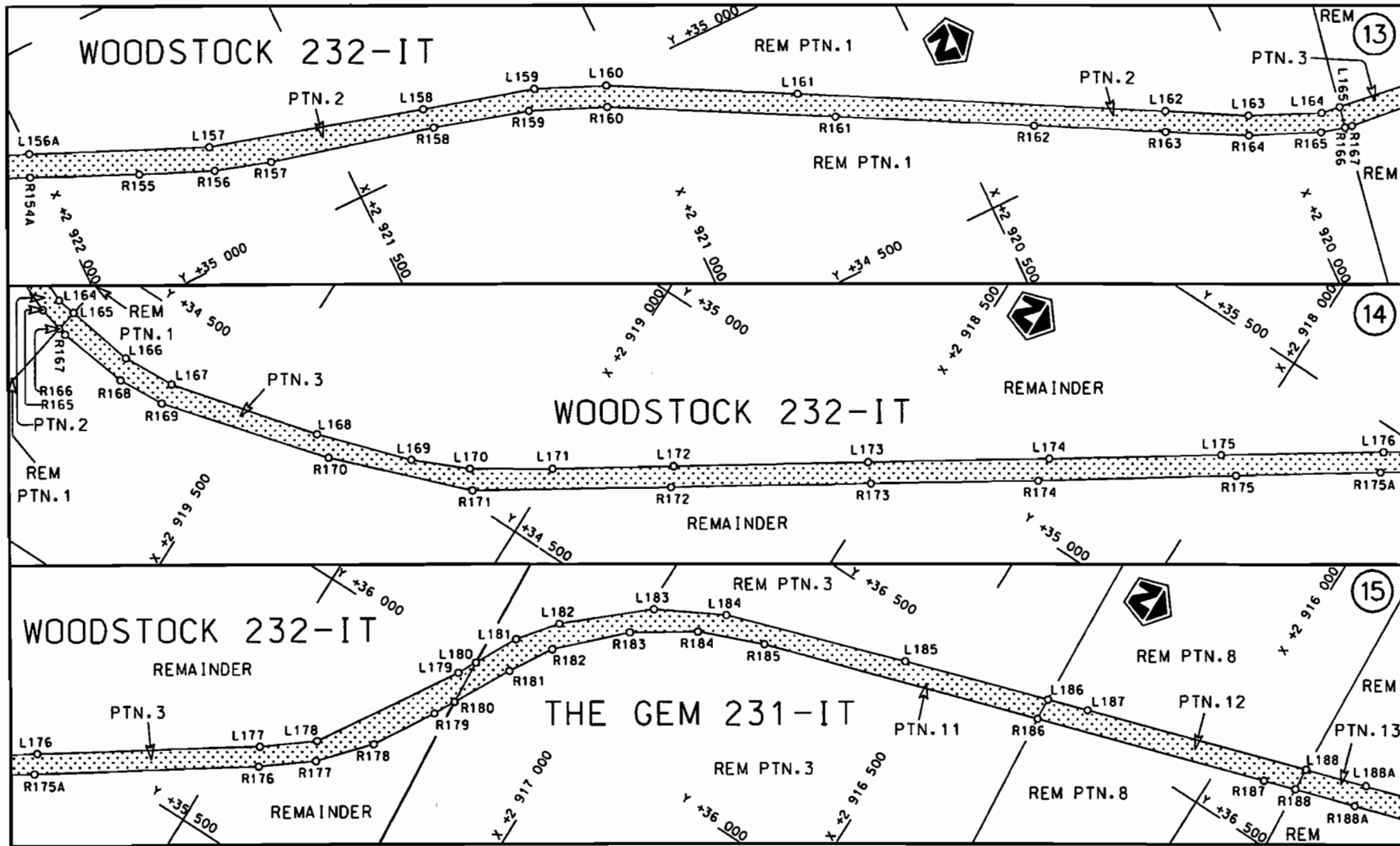


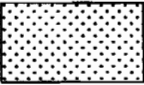
Die Suid Afrikaanse Nasionale Padagentskap Beperk The South African National Roads Agency Limited	Die figuur getoon The figure shown		steldie padreserwe voor van 'n gedeelte represents the road reserve of a portion van Nasionale Roete R33 Seksie 7 of National Route R33 Section 7	Vel Sheet 3 van 15 Plan P768/09
--	---------------------------------------	---	--	------------------------------------

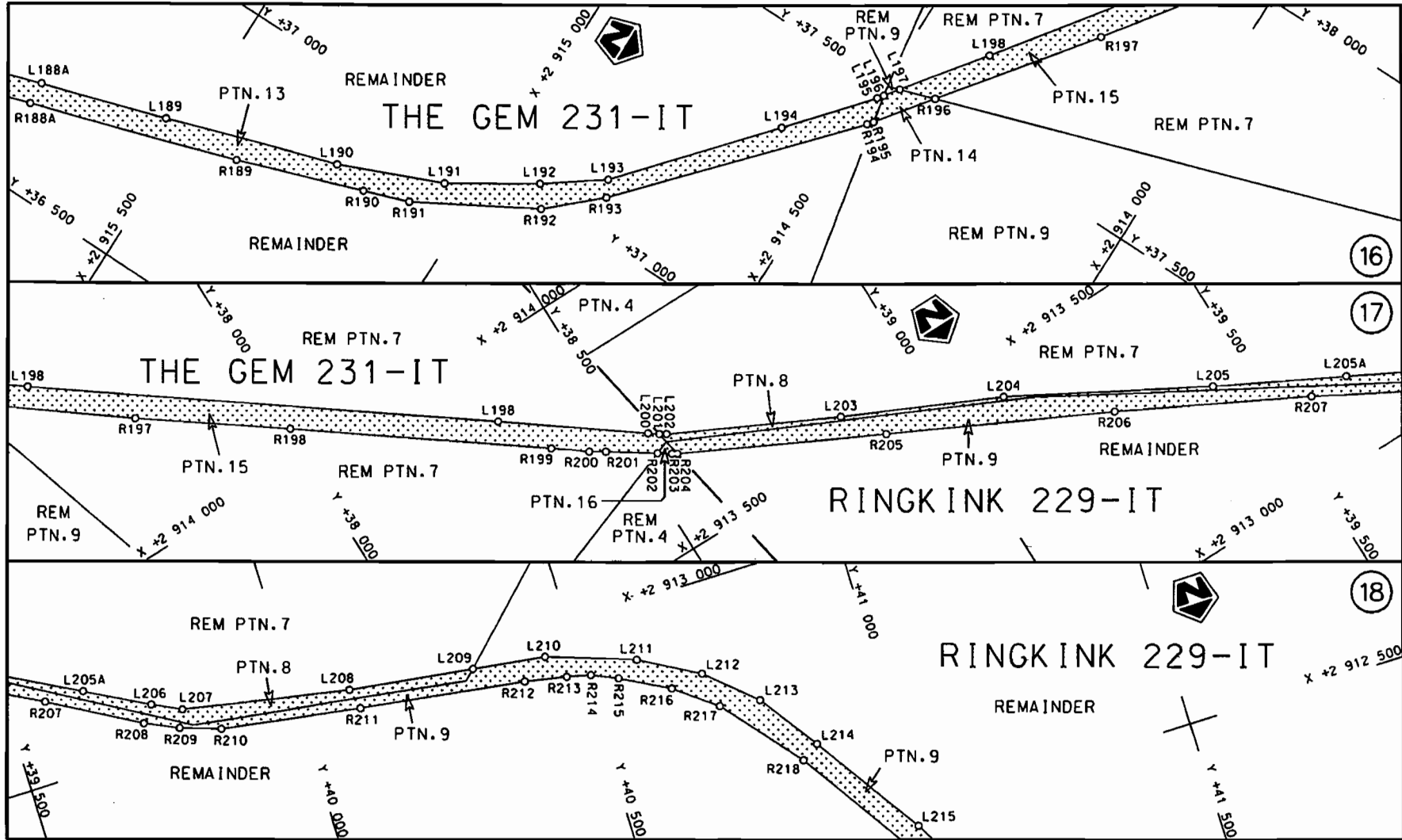


<p>Die Suid Afrikaanse Nasionale Padagentskap Beperk The South African National Roads Agency Limited</p>	<p>Die figuur getoon The figure shown</p> 	<p>steld die padreserwe voor van 'n gedeelte represents the road reserve of a portion van Nasionale Roete R33 of National Route R33</p> <p>Seksie 7 Section</p>	<p>Vel Sheet 4 van 15 of Plan P768/09</p>
--	---	---	---

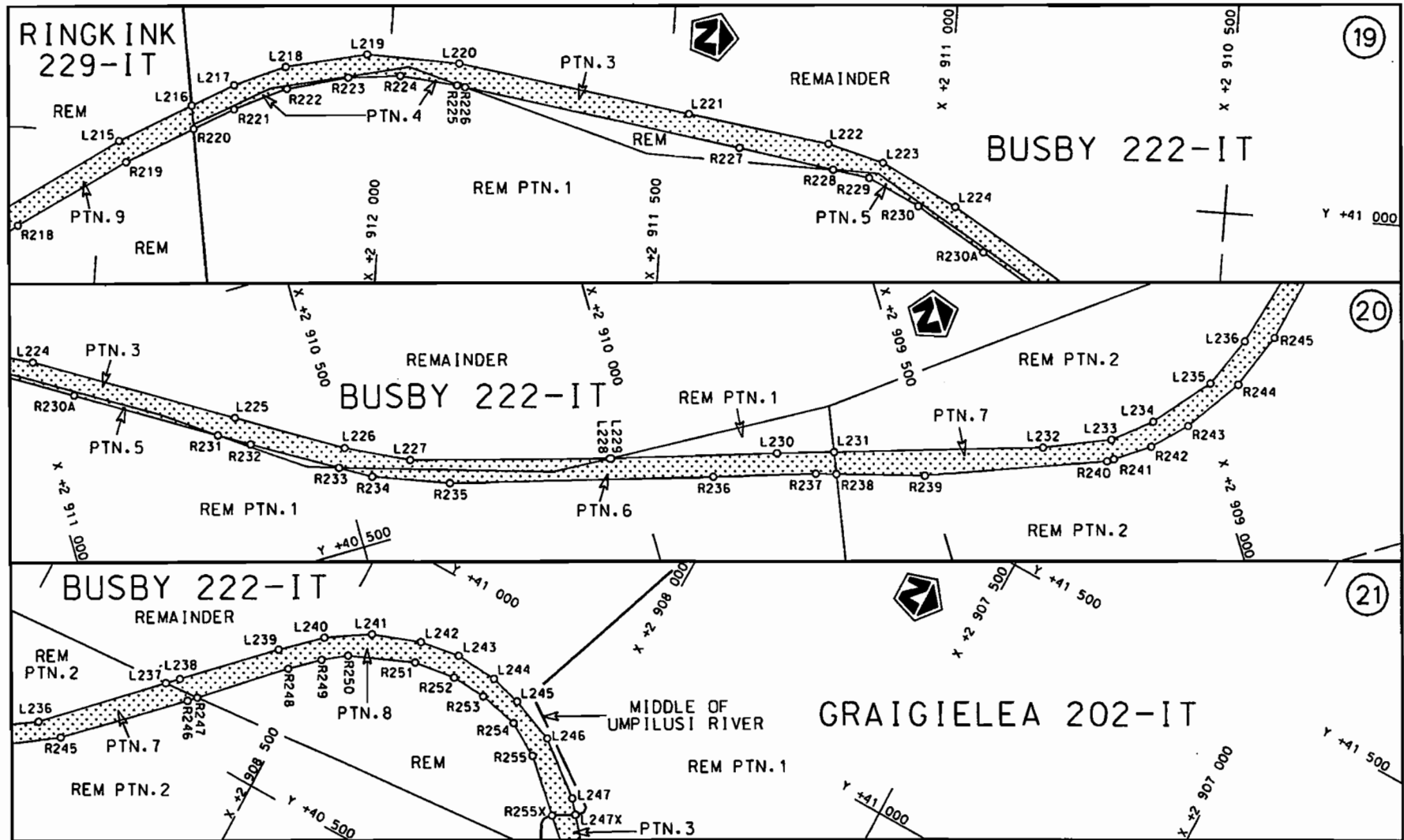




<p>Die Suid Afrikaanse Nasionale Padogentskap Beperk The South African National Roads Agency Limited</p>	<p>Die figuur getoon The figure shown</p> 	<p>stel die padreserwe voor van 'n gedeelte represents the road reserve of a portion van Nasionale Roete R33 Seksie Section 7 of National Route</p>	<p>Vel Sheet 5 van of 15 Plan P768/09</p>
--	---	---	---



<p>Die Suid Afrikaanse Nasionale Podagentskap Beperk The South African National Roads Agency Limited</p>	<p>Die figuur getoon The figure shown</p>		<p>stel die padreserwe voor van 'n gedeelte represents the road reserve of a portion van Nasionale Roete R33 Sektie of National Route R33 Section 7</p>	<p>Vel Sheet 6 van of 15 Plan P768/09</p>
--	---	--	---	---



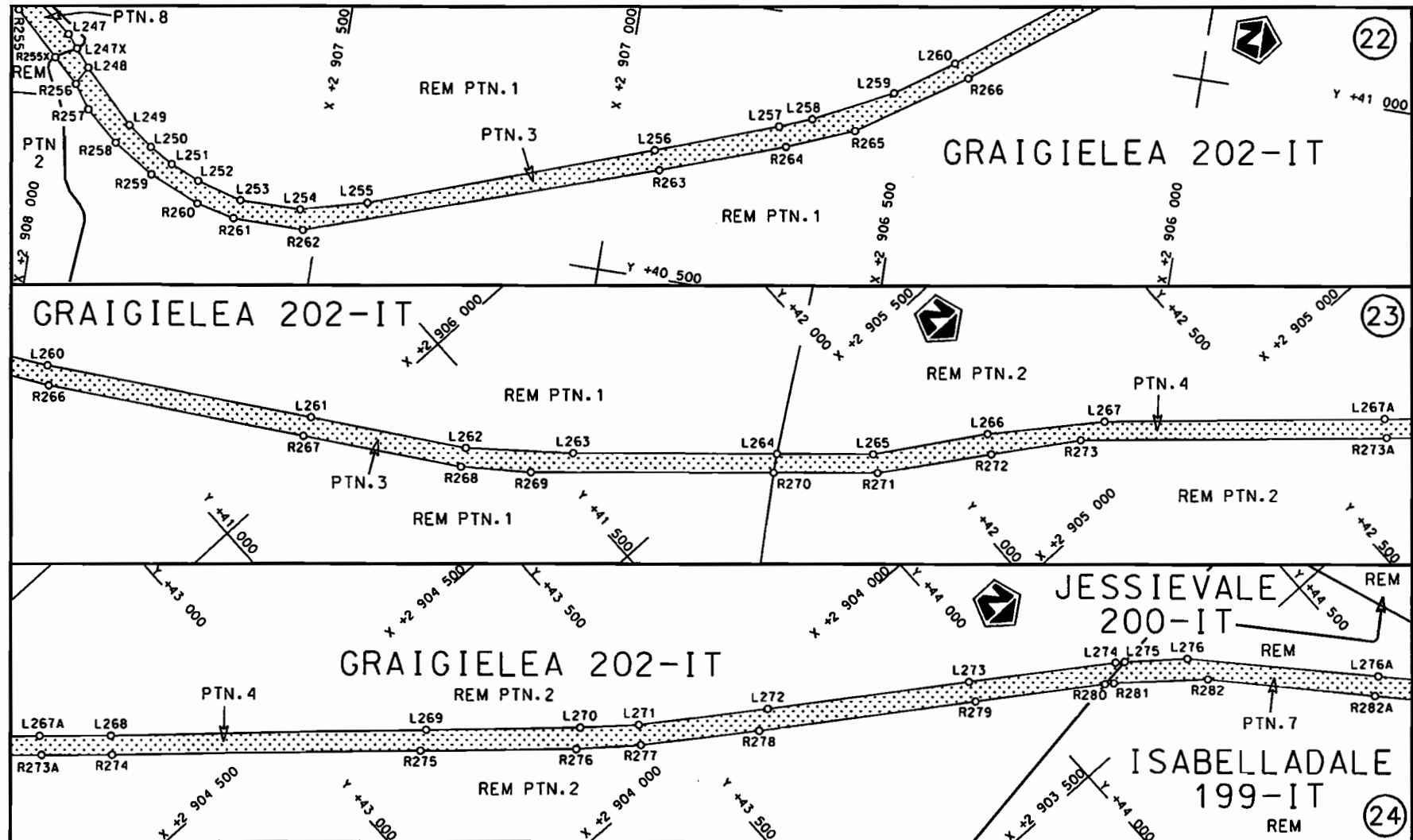
Die Suid Afrikaanse Nasionale Padagentskap Beperk  
The South African National Roads Agency Limited

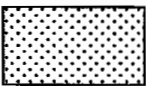
Die figuur getoon  
The figure shown

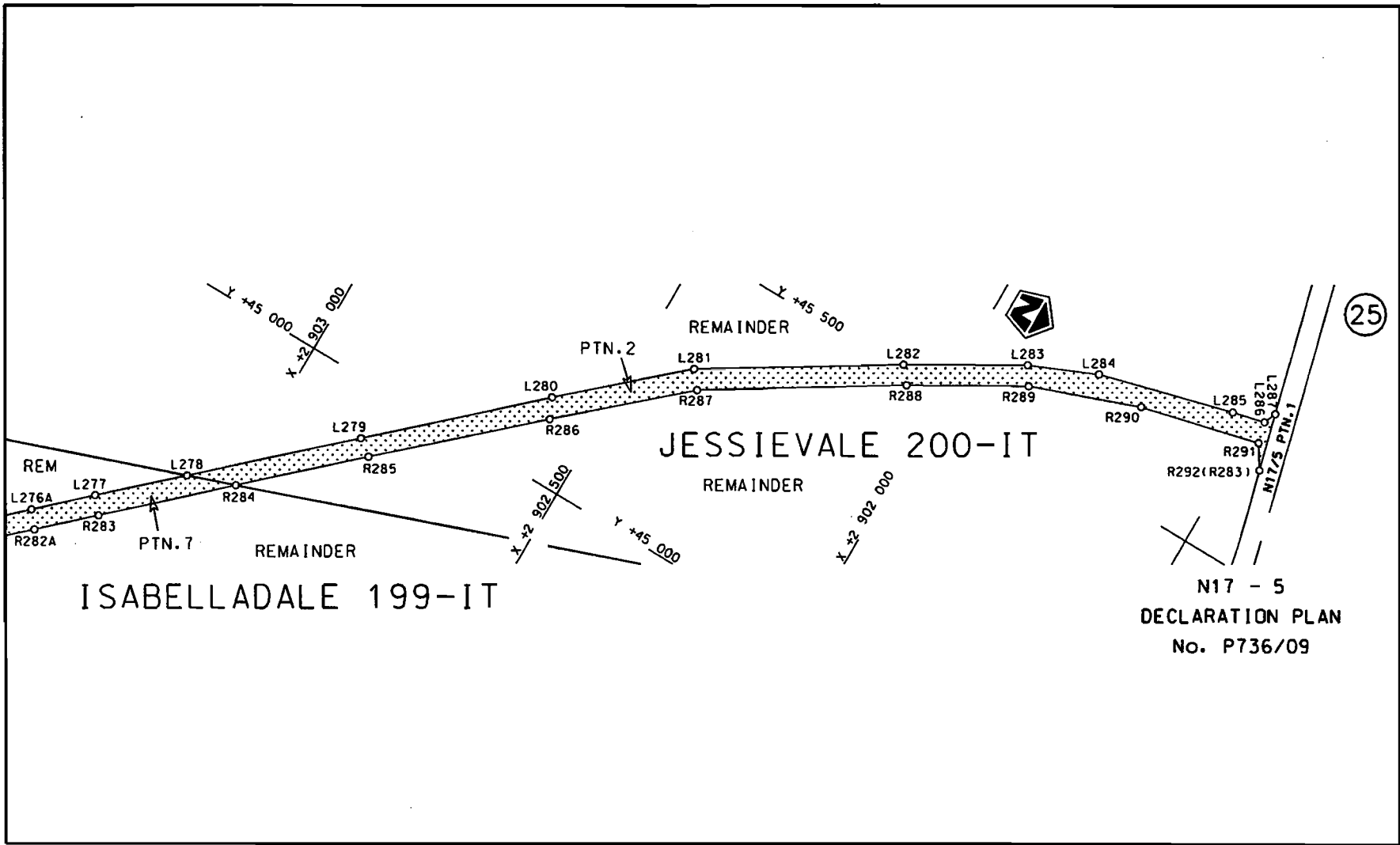


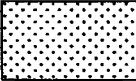
steldie padreserwe voor van 'n gedeelte  
represents the road reserve of a portion  
von Nasionale Roete R33 Seksie Section  
of National Route 7

Vel Sheet 7 van of 15  
Plan P768/09



<p>Die Suid Afrikaanse Nasionale Padagentskop Beperk The South African National Roads Agency Limited</p>	<p>Die figuur getoon The figure shown</p>		<p>steldie padreserwe voor van 'n gedeelte represents the road reserve of a portion van Nasionale Roete R33 of National Route R33</p> <p>Seksie Section 7</p>	<p>Vel Sheet 8 van 15 of of</p> <p>Plan P768/09</p>
--	---	---	---	---



<p>Die Suid Afrikaanse Nasionale Padagentskap Beperk The South African National Roads Agency Limited</p>	<p>Die figuur getoon The figure shown</p>	<p>             stel die padreserwe voor van 'n gedeelte            represents the road reserve of a portion            van Nasionale Roete R33            of National Route R33            Seksie 7            Section         </p>	<p>           Vel 9 van 15            Sheet of            Plan P768/09         </p>
--	---	---	---

PADRESERWE KOÖRDINATE / ROAD RESERVE CO-ORDINATES					
LINKERKANT/LEFT HAND SIDE			REGTERKANT/RIGHT HAND SIDE		
	Y	X	WG 31°		
L1	34 005.130	2 945 078.330		R1	33 986.790 2 945 062.610
L2	34 232.260	2 944 817.290		R2	34 174.550 2 944 829.980
L3	34 331.510	2 944 698.600		R3	34 301.680 2 944 677.510
L4	34 464.620	2 944 541.150		R4	34 437.400 2 944 515.100
L5	34 510.820	2 944 483.910		R5	34 505.660 2 944 431.450
L6	34 570.760	2 944 410.700		R6	34 571.950 2 944 349.940
L7	34 632.330	2 944 336.220		R7	34 637.960 2 944 281.560
L8	34 662.000	2 944 310.650		R8	34 713.700 2 944 226.890
L9	34 737.140	2 944 264.680		R9	34 811.480 2 944 204.900
L10	34 818.020	2 944 241.890		R10	34 934.280 2 944 190.670
L11	34 937.570	2 944 227.730		R11	35 021.020 2 944 169.530
L12	35 033.790	2 944 204.590		R12	35 093.660 2 944 130.000
L13	35 125.560	2 944 161.180		R13	35 156.420 2 944 073.050
L14	35 185.970	2 944 095.360		R14	35 203.910 2 944 001.290
L15	35 224.780	2 944 036.040		R15	35 232.960 2 943 916.830
L16	35 269.150	2 943 926.200		R16	35 259.210 2 943 805.250
L17	35 275.360	2 943 898.790		R17	35 267.970 2 943 745.520
L18	35 295.460	2 943 813.180		R18	35 272.580 2 943 657.360
L19	35 307.890	2 943 672.450		R19	35 272.820 2 943 652.740
L20	35 308.290	2 943 667.940		R20	35 296.750 2 943 140.330
L21	35 326.580	2 943 296.400		R21	35 311.220 2 942 827.220
L22	35 334.050	2 943 140.650		R22	35 327.710 2 942 712.270
L23	35 348.870	2 942 829.150		R23	35 341.210 2 942 665.550
L24	35 364.510	2 942 718.430		R24	35 383.360 2 942 564.080
L25	35 416.520	2 942 581.330		R25	35 461.710 2 942 434.590
L26	35 453.920	2 942 518.960		R26	35 623.040 2 942 174.290
L27	35 467.400	2 942 494.710		R27	35 760.280 2 941 952.660
L28	35 651.250	2 942 197.060		R28	35 790.730 2 941 903.590
L29	35 786.480	2 941 979.280		R29	35 835.420 2 941 815.050
L30	35 868.620	2 941 833.910		R30	35 835.450 2 941 815.030
L31	35 901.050	2 941 731.820		R31	35 863.970 2 941 726.870
L32	35 914.990	2 941 637.850		R32	35 877.720 2 941 641.870
L33	35 913.430	2 941 528.250		R33	35 875.200 2 941 519.300
L34	35 894.670	2 941 425.640		R34	35 847.640 2 941 416.510
L35	35 867.600	2 941 347.290		R35	35 833.690 2 941 364.430
L36	35 768.490	2 941 098.090		R36	35 731.880 2 941 106.030
L37	35 750.090	2 941 044.070		R37	35 712.560 2 941 049.040
L38	35 735.930	2 940 984.530		R38	35 698.660 2 940 989.940
L39	35 726.340	2 940 893.230		R39	35 689.340 2 940 898.870
L40	35 731.070	2 940 802.850		R40	35 692.890 2 940 802.190
L41	35 738.130	2 940 740.480		R41	35 705.520 2 940 721.850
L42	35 738.620	2 940 736.160		R42	35 706.250 2 940 717.230
L43	35 762.160	2 940 646.940		R43	35 716.520 2 940 649.910
L44	35 781.660	2 940 573.400		R44	35 742.620 2 940 562.320
L45	35 817.080	2 940 492.190		R45	35 782.990 2 940 476.960
L46	35 830.200	2 940 470.170		R46	35 817.470 2 940 415.650
L47	35 922.710	2 940 315.620		R47	35 892.580 2 940 292.630
L48	36 018.710	2 940 153.500		R48	35 984.020 2 940 139.340
L49	36 056.780	2 940 079.340		R49	36 021.860 2 940 065.390
L50	36 076.160	2 940 018.420		R50	36 039.560 2 940 011.260
L51	36 090.230	2 939 944.870		R51	36 057.180 2 939 887.110

Vel	10	Van	15	P768/09
Sheet		of		

PADRESERWE KOÖRDINATE / ROAD RESERVE CO-ORDINATES					
LINKERKANT/LEFT HAND SIDE			REGTERKANT/RIGHT HAND SIDE		
	Y	X	WG 31°		X
L52	36 086.100	2 939 858.790		R52	36 040.080 2 939 795.300
L53	36 060.810	2 939 755.400		R53	36 001.520 2 939 672.280
L54	36 037.530	2 939 662.870		R54	35 979.270 2 939 576.020
L55	36 020.620	2 939 587.710		R55	35 974.000 2 939 448.940
L56	36 010.230	2 939 451.630		R56	35 981.080 2 939 328.650
L57	36 016.910	2 939 355.770		R57	35 977.470 2 939 240.530
L58	36 017.170	2 939 328.880		R58	35 967.630 2 939 181.760
L59	36 014.390	2 939 235.010		R59	35 931.550 2 939 002.410
L60	35 958.040	2 938 936.660		R60	35 923.170 2 938 938.940
L61	35 983.840	2 938 758.650		R61	35 925.890 2 938 842.640
L62	36 043.000	2 938 647.910		R62	35 946.670 2 938 760.690
L63	36 124.960	2 938 576.750		R63	35 969.620 2 938 698.880
L64	36 258.470	2 938 453.260		R64	36 005.640 2 938 639.020
L65	36 344.310	2 938 385.110		R65	36 032.550 2 938 607.280
L66	36 385.140	2 938 344.780		R66	36 066.040 2 938 567.500
L67	36 629.560	2 938 136.090		R67	36 301.810 2 938 365.320
L68	36 925.650	2 937 883.060		R68	36 320.820 2 938 348.930
L69	36 993.160	2 937 808.720		R69	36 576.280 2 938 132.030
L70	37 040.120	2 937 739.810		R70	36 897.550 2 937 858.130
L71	37 063.570	2 937 692.550		R71	36 960.680 2 937 790.180
L72	37 094.050	2 937 619.490		R72	37 009.000 2 937 719.020
L73	37 196.960	2 937 263.720		R73	37 047.640 2 937 640.040
L74	37 255.940	2 937 089.040		R74	37 066.620 2 937 586.090
L75	37 249.980	2 937 078.370		R75	37 156.270 2 937 269.680
L76	37 252.730	2 937 065.410		R76	37 217.070 2 937 054.890
L77	37 270.410	2 936 981.810		R77	37 217.900 2 937 050.970
L78	37 281.660	2 936 776.170		R78	37 233.050 2 936 979.030
L79	37 291.090	2 936 523.700		R79	37 249.680 2 936 675.100
L80	37 297.390	2 936 400.650		R80	37 253.850 2 936 522.730
L81	37 327.430	2 936 225.710		R81	37 257.500 2 936 431.340
L82	37 426.690	2 935 770.830		R82	37 268.200 2 936 327.830
L83	37 536.750	2 935 251.830		R83	37 291.900 2 936 213.780
L84	37 536.910	2 935 251.030		R84	37 372.100 2 935 835.670
L85	37 569.510	2 935 090.610		R85	37 396.130 2 935 723.270
L86	37 575.930	2 934 989.870		R86	37 447.480 2 935 498.390
L87	37 575.980	2 934 989.150		R87	37 506.560 2 935 232.770
L88	37 574.190	2 934 910.990		R88	37 507.650 2 935 227.920
L89	37 559.400	2 934 805.660		R89	37 507.860 2 935 227.660
L90	37 500.840	2 934 610.180		R90	37 507.950 2 935 226.990
L91	37 442.190	2 934 468.020		R91	37 535.920 2 935 022.620
L92	37 321.340	2 934 175.710		R92	37 538.740 2 935 002.000
L93	37 275.020	2 934 064.440		R93	37 536.810 2 934 914.720
L94	37 201.730	2 933 888.140		R94	37 520.110 2 934 795.570
L95	37 169.180	2 933 795.670		R95	37 497.680 2 934 709.290
L96	37 143.490	2 933 679.610		R96	37 466.180 2 934 624.790
L97	37 130.390	2 933 497.350		R97	37 409.060 2 934 486.860
L98	37 137.190	2 933 465.090		R98	37 288.280 2 934 194.240
L99	37 188.030	2 933 073.790		R99	37 166.780 2 933 902.260
L100	37 206.410	2 932 944.720		R100	37 132.750 2 933 804.940
L101	37 212.500	2 932 896.530		R101	37 105.810 2 933 682.940
L102	37 220.350	2 932 847.200		R102	37 095.590 2 933 559.760

Vel	11	Van	15	P768/09
Sheet		of		

PADRESERWE KOÖRDINATE / ROAD RESERVE CO-ORDINATES											
LINKERKANT/LEFT HAND SIDE					REGTERKANT/RIGHT HAND SIDE						
	Y		X	WG 31°				X			
L103	37	247.520	2	932	712.330	R103	37	094.930	2	933	512.920
L104	37	287.510	2	932	300.950	R104	37	098.850	2	933	484.340
L105	37	309.030	2	932	135.590	R105	37	138.170	2	933	164.400
L106	37	312.960	2	932	105.300	R106	37	150.810	2	933	065.730
L107	37	343.820	2	931	867.180	R107	37	185.910	2	932	791.790
L108	37	416.100	2	931	670.670	R108	37	253.110	2	932	276.730
L109	37	447.860	2	931	612.690	R109	37	253.380	2	932	274.640
L110	37	441.630	2	931	611.030	R110	37	270.620	2	932	140.880
L111	37	636.290	2	931	288.040	R111	37	272.280	2	932	127.980
L112	37	585.850	2	931	302.320	R112	37	320.930	2	931	757.250
L113	37	539.430	2	931	332.180	R113	37	421.760	2	931	574.460
L114	37	457.920	2	931	249.080	R114	37	510.250	2	931	432.400
L115	37	374.580	2	931	149.930	R115	37	518.630	2	931	363.230
L116	37	265.700	2	930	925.130	R116	37	392.840	2	931	231.110
L117	37	243.340	2	930	828.710	R117	37	311.560	2	931	122.870
L118	37	233.780	2	930	730.460	R118	37	265.610	2	931	033.150
L119	37	226.370	2	930	372.250	R119	37	229.150	2	930	934.860
L120	37	223.960	2	930	294.540	R120	37	206.300	2	930	836.680
L121	37	220.500	2	930	231.420	R121	37	196.240	2	930	735.850
L122	37	211.970	2	930	153.110	R122	37	188.830	2	930	374.000
L123	37	193.480	2	930	054.860	R123	37	186.150	2	930	293.910
L124	37	171.400	2	929	963.670	R124	37	182.280	2	930	236.230
L125	37	127.700	2	929	784.330	R125	37	173.350	2	930	158.000
L126	37	081.950	2	929	596.580	R126	37	156.730	2	930	064.200
L127	36	994.260	2	929	239.020	R127	37	140.790	2	929	993.220
L128	36	957.860	2	929	086.020	R128	37	086.880	2	929	782.550
L129	36	857.660	2	928	693.870	R129	37	076.240	2	929	741.060
L130	36	775.180	2	928	333.330	R130	36	977.230	2	929	327.470
L131	36	753.560	2	928	253.280	R131	36	909.880	2	929	050.520
L132	36	752.690	2	928	250.070	R132	36	773.570	2	928	493.250
L133	36	743.560	2	928	209.050	R133	36	720.950	2	928	280.690
L134	36	705.930	2	928	039.910	R134	36	717.010	2	928	264.760
L135	36	685.940	2	927	884.500	R135	36	672.470	2	928	070.340
L136	36	665.310	2	927	617.300	R136	36	669.760	2	928	058.500
L137	36	636.580	2	927	268.740	R137	36	656.820	2	927	922.170
L138	36	606.020	2	926	882.260	R138	36	631.450	2	927	660.190
L139	36	591.720	2	926	718.780	R139	36	595.210	2	927	278.560
L140	36	550.170	2	926	221.470	R140	36	562.140	2	926	770.000
L141	36	528.950	2	925	912.220	R141	36	516.230	2	926	206.330
L142	36	517.940	2	925	751.670	R142	36	493.670	2	925	923.020
L143	36	470.490	2	925	149.550	R143	36	480.340	2	925	755.660
L144	36	455.330	2	924	958.820	R144	36	453.040	2	925	404.770
L145	36	433.150	2	924	690.400	R145	36	361.270	2	924	231.140
L146	36	426.650	2	924	609.570	R146	36	354.290	2	924	191.810
L147	36	415.360	2	924	453.360	R147	36	330.610	2	924	058.380
L148	36	403.200	2	924	164.210	R148	36	279.110	2	923	943.460
L149	36	359.750	2	924	053.240	R149	36	095.720	2	923	617.240
L150	36	314.690	2	923	931.510	R150	35	941.070	2	923	353.230
L151	36	115.490	2	923	582.220	R151	35	766.130	2	923	046.090
L152	36	106.260	2	923	566.030	R152	35	718.870	2	922	963.110
L153	35	812.290	2	923	047.550	R153	35	704.460	2	922	937.810

Vel	12	Van	15	P768/09
Sheet		of		



PADRESERWE KOÖRDINATE / ROAD RESERVE CO-ORDINATES											
LINKERKANT/LEFT HAND SIDE					REGTERKANT/RIGHT HAND SIDE						
	Y		X	WG 31°				X			
L154	35	737.290	2	922	915.270	R154	35	439.030	2	922	352.880
L155	35	723.210	2	922	890.440	R155	35	207.970	2	921	838.840
L156	35	471.250	2	922	332.500	R156	35	155.090	2	921	714.780
L157	35	196.800	2	921	705.630	R157	35	123.830	2	921	615.210
L158	35	091.990	2	921	334.070	R158	35	054.790	2	921	331.270
L159	35	039.430	2	921	140.320	R159	35	008.480	2	921	165.980
L160	34	989.700	2	921	023.330	R160	34	955.000	2	921	038.170
L161	34	830.970	2	920	725.040	R161	34	765.150	2	920	680.820
L162	34	522.660	2	920	148.470	R162	34	599.490	2	920	370.130
L163	34	452.480	2	920	019.330	R163	34	489.800	2	920	163.960
L164	34	400.900	2	919	900.090	R164	34	420.720	2	920	033.790
L165	34	396.490	2	919	866.700	R165	34	370.760	2	919	916.090
L166	34	380.370	2	919	744.490	R166	34	359.550	2	919	873.230
L167	34	385.490	2	919	651.970	R167	34	356.970	2	919	863.360
L168	34	453.400	2	919	384.990	R168	34	342.810	2	919	731.910
L169	34	505.370	2	919	222.000	R169	34	347.850	2	919	648.820
L170	34	548.870	2	919	126.290	R170	34	429.850	2	919	345.610
L171	34	628.930	2	919	002.250	R171	34	519.420	2	919	102.420
L172	34	748.980	2	918	825.270	R172	34	715.750	2	918	809.400
L173	34	943.450	2	918	539.030	R173	34	914.740	2	918	514.670
L174	35	123.120	2	918	273.250	R174	35	080.080	2	918	269.110
L175	35	295.340	2	918	020.920	R175	35	279.520	2	917	979.270
L176	35	457.670	2	917	781.480	R176	35	652.310	2	917	434.090
L177	35	683.030	2	917	451.070	R177	35	715.150	2	917	353.550
L178	35	745.880	2	917	370.530	R178	35	795.030	2	917	283.540
L179	35	981.020	2	917	224.820	R179	35	898.270	2	917	222.540
L180	36	012.700	2	917	208.410	R180	35	934.430	2	917	203.230
L181	36	086.210	2	917	170.330	R181	36	032.760	2	917	150.700
L182	36	151.240	2	917	119.080	R182	36	106.570	2	917	106.020
L183	36	262.560	2	916	992.370	R183	36	205.320	2	917	006.340
L184	36	322.720	2	916	879.640	R184	36	271.410	2	916	906.240
L185	36	427.580	2	916	567.810	R185	36	316.430	2	916	795.210
L186	36	508.520	2	916	318.970	R186	36	469.970	2	916	316.440
L187	36	531.140	2	916	249.440	R187	36	597.270	2	915	919.500
L188	36	654.000	2	915	867.280	R188	36	614.790	2	915	864.710
L189	36	759.070	2	915	540.470	R189	36	764.880	2	915	395.360
L190	36	857.900	2	915	238.690	R190	36	843.930	2	915	174.570
L191	36	932.390	2	915	061.980	R191	36	871.530	2	915	096.290
L192	37	023.480	2	914	919.220	R192	36	987.130	2	914	893.770
L193	37	095.460	2	914	821.770	R193	37	067.120	2	914	807.360
L194	37	338.950	2	914	613.140	R194	37	427.830	2	914	486.770
L195	37	474.930	2	914	497.370	R195	37	436.460	2	914	480.270
L196	37	485.210	2	914	489.750	R196	37	530.090	2	914	409.740
L197	37	509.790	2	914	471.540	R197	37	780.600	2	914	221.050
L198	37	646.140	2	914	370.520	R198	38	005.240	2	914	058.470
L199	38	324.720	2	913	874.010	R199	38	380.140	2	913	783.240
L200	38	539.670	2	913	714.680	R200	38	433.870	2	913	742.830
L201	38	556.040	2	913	702.830	R201	38	458.880	2	913	727.150
L202	38	563.190	2	913	697.660	R202	38	535.300	2	913	675.810
L203	38	843.530	2	913	558.190	R203	38	561.700	2	913	658.070
L204	39	106.980	2	913	433.630	R204	38	564.670	2	913	656.560

Vel 13  
Sheet

Van 15  
of

P768/09

PADRESERWE KOÖRDINATE / ROAD RESERVE CO-ORDINATES						
LINKERKANT/LEFT HAND SIDE				REGTERKANT/RIGHT HAND SIDE		
	Y	X	WG 31°		X	
L205	39 432.550	2 913 250.440		R205	38 896.620	2 913 488.630
L206	39 750.260	2 913 081.160		R206	39 260.230	2 913 306.630
L207	39 800.960	2 913 056.550		R207	39 570.170	2 913 142.530
L208	40 096.930	2 913 000.210		R208	39 727.760	2 913 053.440
L209	40 314.870	2 912 971.010		R209	39 786.510	2 913 026.470
L210	40 444.310	2 912 953.660		R210	39 856.770	2 913 003.390
L211	40 598.010	2 912 900.110		R211	40 105.900	2 912 963.510
L212	40 700.550	2 912 842.670		R212	40 396.330	2 912 922.850
L213	40 784.020	2 912 767.920		R213	40 470.650	2 912 908.410
L214	40 856.900	2 912 664.380		R214	40 512.440	2 912 898.110
L215	40 987.180	2 912 471.960		R215	40 557.480	2 912 878.560
L216	41 057.380	2 912 346.690		R216	40 642.230	2 912 833.450
L217	41 098.980	2 912 272.830		R217	40 713.180	2 912 778.980
L218	41 137.810	2 912 182.700		R218	40 825.550	2 912 644.000
L219	41 169.990	2 912 040.610		R219	40 950.510	2 912 457.180
L220	41 165.710	2 911 876.960		R220	41 016.810	2 912 340.250
L221	41 106.110	2 911 463.350		R221	41 056.660	2 912 269.970
L222	41 071.130	2 911 212.470		R222	41 099.280	2 912 177.960
L223	41 043.990	2 911 112.650		R223	41 126.780	2 912 071.430
L224	40 975.730	2 910 979.060		R224	41 136.450	2 911 979.130
L225	40 781.440	2 910 656.780		R225	41 126.840	2 911 878.410
L226	40 676.680	2 910 484.250		R226	41 124.760	2 911 864.100
L227	40 624.410	2 910 378.040		R227	41 052.900	2 911 369.610
L228	40 529.820	2 910 037.760		R228	41 026.030	2 911 201.020
L229	40 529.050	2 910 035.000		R229	41 015.620	2 911 135.730
L230	40 456.680	2 909 748.450		R230	40 972.140	2 911 044.300
L231	40 430.790	2 909 650.010		R231	40 760.650	2 910 694.950
L232	40 336.060	2 909 289.760		R232	40 728.890	2 910 642.480
L233	40 316.270	2 909 170.080		R233	40 646.010	2 910 503.440
L234	40 326.050	2 909 089.200		R234	40 614.850	2 910 451.170
L235	40 362.520	2 908 972.000		R235	40 566.090	2 910 321.830
L236	40 419.020	2 908 885.430		R236	40 447.870	2 909 868.250
L237	40 584.180	2 908 721.140		R237	40 403.120	2 909 691.980
L238	40 602.900	2 908 702.520		R238	40 392.350	2 909 656.752
L239	40 733.870	2 908 571.640		R239	40 346.150	2 909 505.330
L240	40 791.280	2 908 511.440		R240	40 281.920	2 909 187.800
L241	40 837.410	2 908 440.420		R241	40 281.920	2 909 182.800
L242	40 867.740	2 908 357.780		R242	40 285.010	2 909 104.940
L243	40 878.870	2 908 288.170		R243	40 301.610	2 909 031.050
L244	40 873.770	2 908 214.310		R244	40 346.650	2 908 924.490
L245	40 858.880	2 908 158.860		R245	40 408.400	2 908 840.180
L246	40 827.890	2 908 080.780		R246	40 576.010	2 908 672.000
L247	40 756.950	2 907 991.470		R247	40 589.240	2 908 659.310
L247X	40 733.880	2 907 972.240		R248	40 712.660	2 908 540.960
L248	40 704.090	2 907 947.420		R249	40 754.580	2 908 496.990
L249	40 616.290	2 907 859.230		R250	40 783.810	2 908 459.360
L250	40 584.140	2 907 815.480		R251	40 831.300	2 908 349.310
L251	40 560.510	2 907 773.800		R252	40 841.430	2 908 276.620
L252	40 539.760	2 907 722.460		R253	40 837.690	2 908 216.050
L253	40 518.410	2 907 642.640		R254	40 822.690	2 908 146.140
L254	40 519.420	2 907 534.950		R255	40 788.510	2 908 088.700

Vel	14	Van	15	P768/09
Sheet		of		

PADRESERWE KOÖRDINATE / ROAD RESERVE CO-ORDINATES											
LINKERKANT/LEFT HAND SIDE					REGTERKANT/RIGHT HAND SIDE						
	Y		X	WG 31°		X					
L255	40	550.220	2	907	419.280	R255X	40	712.170	2	908	007.080
L256	40	722.630	2	906	934.440	R256	40	672.640	2	907	964.830
L257	40	799.170	2	906	722.860	R257	40	631.750	2	907	935.750
L258	40	821.170	2	906	667.340	R258	40	581.580	2	907	878.210
L259	40	889.690	2	906	531.340	R259	40	536.730	2	907	806.690
L260	40	957.970	2	906	433.410	R260	40	500.370	2	907	717.510
L261	41	247.350	2	906	052.830	R261	40	485.240	2	907	649.640
L262	41	415.320	2	905	831.030	R262	40	484.740	2	907	524.270
L263	41	550.490	2	905	698.470	R263	40	689.240	2	906	920.840
L264	41	818.860	2	905	457.460	R264	40	765.710	2	906	705.270
L265	41	945.090	2	905	344.090	R265	40	813.040	2	906	589.470
L266	42	120.270	2	905	235.420	R266	40	936.150	2	906	405.810
L267	42	288.900	2	905	114.240	R267	41	215.460	2	906	037.540
L268	42	756.270	2	904	704.550	R268	41	387.060	2	905	812.220
L269	43	180.190	2	904	339.230	R269	41	472.790	2	905	722.900
L270	43	385.940	2	904	161.690	R270	41	792.410	2	905	436.760
L271	43	465.810	2	904	096.840	R271	41	929.200	2	905	314.290
L272	43	655.710	2	903	965.970	R272	42	101.490	2	905	204.220
L273	43	953.210	2	903	764.960	R273	42	235.910	2	905	117.670
L274	44	177.730	2	903	611.880	R274	42	735.510	2	904	677.940
L275	44	181.720	2	903	608.680	R275	43	148.780	2	904	318.520
L276	44	268.060	2	903	539.270	R276	43	355.550	2	904	137.890
L277	44	579.100	2	903	206.990	R277	43	445.140	2	904	067.950
L278	44	692.210	2	903	083.520	R278	43	618.810	2	903	947.070
L279	44	907.040	2	902	849.000	R279	43	938.710	2	903	731.450
L280	45	142.240	2	902	593.500	R280	44	129.990	2	903	602.150
L281	45	312.800	2	902	403.990	R281	44	139.170	2	903	595.940
L282	45	509.450	2	902	087.670	R282	44	271.110	2	903	487.970
L283	45	621.320	2	901	897.550	R283	44	551.600	2	903	183.880
L284	45	672.570	2	901	780.170	R284	44	722.760	2	902	998.240
L285	45	736.910	2	901	542.470	R285	44	885.870	2	902	821.330
L286	45	751.020	2	901	484.850	R286	45	107.120	2	902	577.640
L287	45	772.880	2	901	475.440	R287	45	283.770	2	902	380.590
						R288	45	481.360	2	902	064.610
						R289	45	590.700	2	901	877.280
						R290	45	661.380	2	901	686.950
						R291	45	714.220	2	901	475.560
						R292	45	673.790	2	901	449.860