

Government Gazette Staatskoerant

REPUBLIC OF SOUTH AFRICA
REPUBLIEK VAN SUID-AFRIKA

Vol. 545

Pretoria, 12 November 2010

No. 33703

IMPORTANT NOTICE

The Government Printing Works will not be held responsible for faxed documents not received due to errors on the fax machine or faxes received which are unclear or incomplete. Please be advised that an "OK" slip, received from a fax machine, will not be accepted as proof that documents were received by the GPW for printing. If documents are faxed to the GPW it will be the sender's responsibility to phone and confirm that the documents were received in good order.

Furthermore the Government Printing Works will also not be held responsible for cancellations and amendments which have not been done on original documents received from clients.

CONTENTS**INHOUD**

| <i>No.</i> | <i>Page No.</i> | <i>Gazette No.</i> | <i>No.</i> | <i>Bladsy No.</i> | <i>Koerant No.</i> |
|---|---------------------|------------------------|--|-----------------------|------------------------|
| GOVERNMENT NOTICE | | | GOEWERMENTSKENNISGEWING | | |
| Transport, Department of | | | Vervoer, Departement van | | |
| <i>Government Notice</i> | | | <i>Goewermentskennisgewing</i> | | |
| 991 | | | 991 | | |
| South African National Roads Agency Limited and the National Roads Act (7/1998): The South African National Roads Agency Limited: Declaration amendment of National Road N2 Section 29: Amendment of Declaration Nos. 124 of 1982, 1322 of 1989 and 236 of 1972 . | | | Suid-Afrikaanse Nasionale Padagentskap Beperk en die Nasionale Paaie Wet (7/1998): Die Suid-Afrikaanse Nasionale Padagentskap Beperk: Verklaring wysiging van Nasionale Pad N2 Seksie 29: Wysiging van Verklaring Nos. 124 van 1982, 1322 van 1989 en 236 van 1972 | | |
| | 3 | 33703 | | 4 | 33703 |

GOVERNMENT NOTICE

DEPARTMENT OF TRANSPORT

No. 991

12 November 2010


**THE SOUTH AFRICAN NATIONAL ROADS
AGENCY LIMITED**Registration No: 98/09584/06

DECLARATION AMENDMENT OF NATIONAL ROAD N2 SECTION 29

AMENDMENT OF DECLARATION NO'S. 124 OF 1982, 1322 OF 1989 AND 236 OF 1972

By virtue of section 40(1)(b) of the South African National Roads Agency Limited and the National Roads Act, 1998 (Act No. 7 of 1998), I hereby amend the following declarations by substituting (I) Declaration No. 124 of 1982 the section from the Mhlatuze river up to its end, (II) Declaration No. 1322 of 1989 Schedule paragraph 12 in its entirety and (III) Declaration No. 236 of 1972 Schedule Part B Province of Natal paragraph 5 the descriptive section from the start of the paragraph up to the Mfolozi River, with the subjoined sheets 1 to 17 of Plan No.P744/09.

(National Road N2 Section 29: Mhlatuze River– Mfolozi River)


MINISTER OF TRANSPORT (Rdang Minister)

GOEWERMENSKENNISGEWING

DEPARTEMENT VAN VERVOER

No. 991

12 November 2010

DIE SUID-AFRIKAANSE NASIONALE PADAGENTSKAP BEPERK

Registrasie No: 98/09584/06

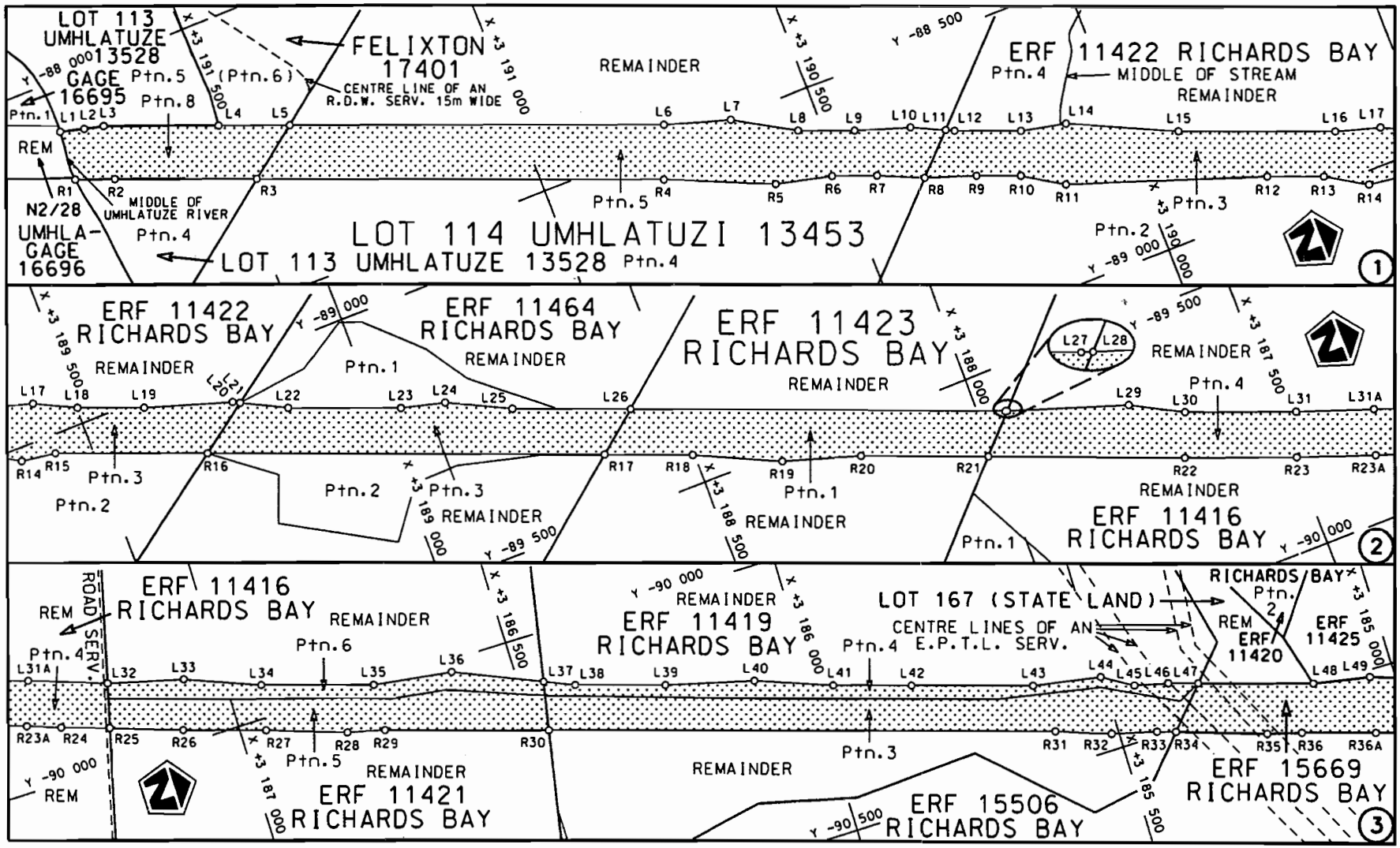
VERKLARING WYSIGING VAN NASIONALE PAD N2 SEKSIE 29.

WYSIGING VAN VERKLARING NO'S. 124 VAN 1982, 1322 VAN 1989 EN 236 VAN 1972

Kragtens Artikel 40(1)(b) van die Suid Afrikaanse Nasionale Padagentskap Beperk en die Nasionale Paaie Wet, 1998 (Wet No.7 van 1998), wysig ek hiermee die volgende verklarings deur (I) Verklaring no. 124 van 1982 die gedeelte vanaf die Mhlatuzerivier tot die einde daarvan, (II) Verklaring no. 1322 van 1989 Skedule paragraaf 12 in sy geheel en (III) Verklaring no. 236 van 1972 Skedule Deel B Provinsie van Natal paragraaf 5 die beskrywende gedeelte vanaf die begin van die paragraaf tot die Mfolozirivier, te vervang met meegaande velle 1 tot 17 van Plan no. P744/09.

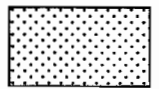
(Nasionale Pad N2 Seksie 29: Mhlatuzerivier – Mfolozirivier)


MINISTER VAN VERVOER



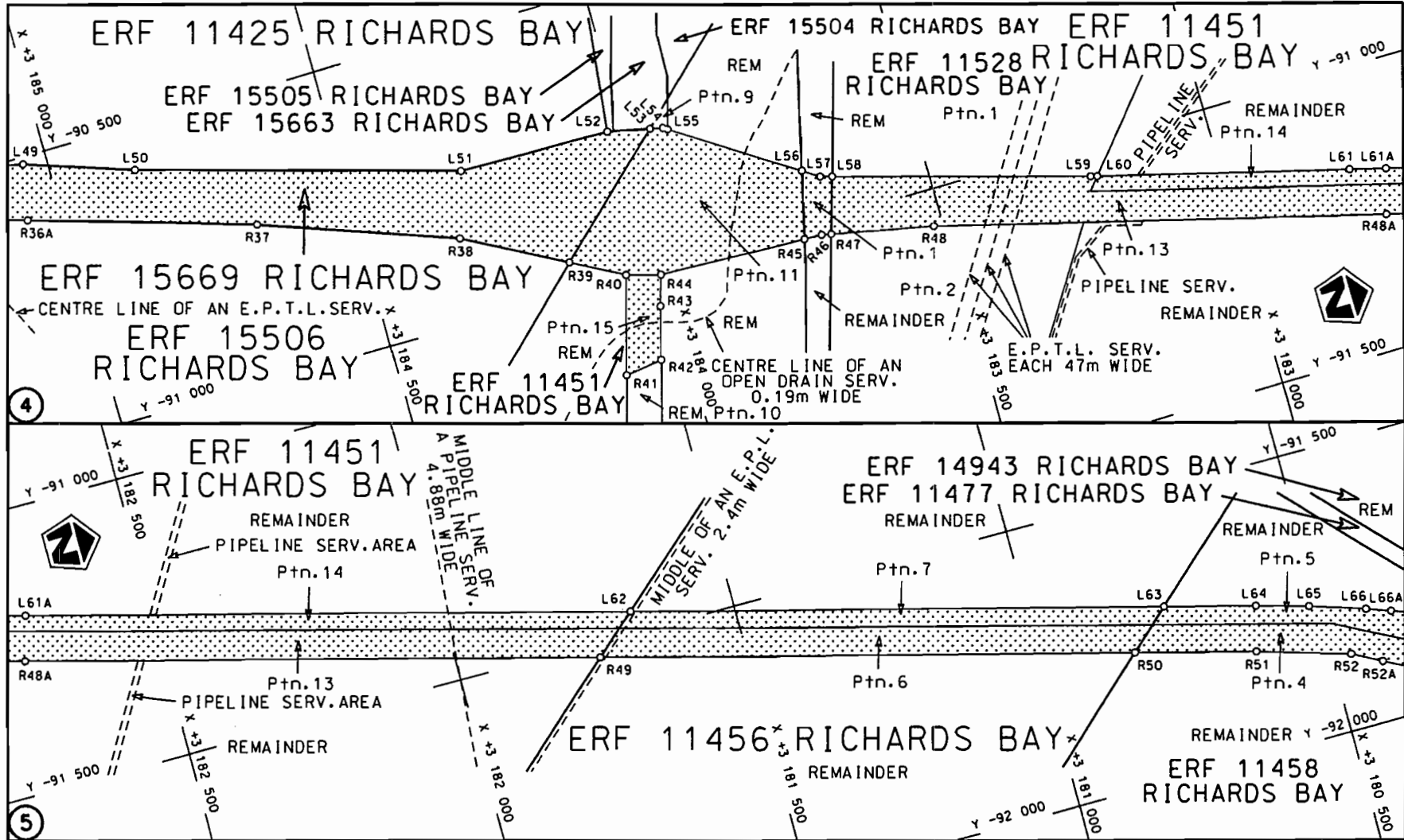
Die Suid Afrikaanse Nasionale Padagentskap Beperk
The South African National Roads Agency Limited

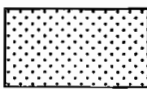
Die figuur getoon
The figure shown

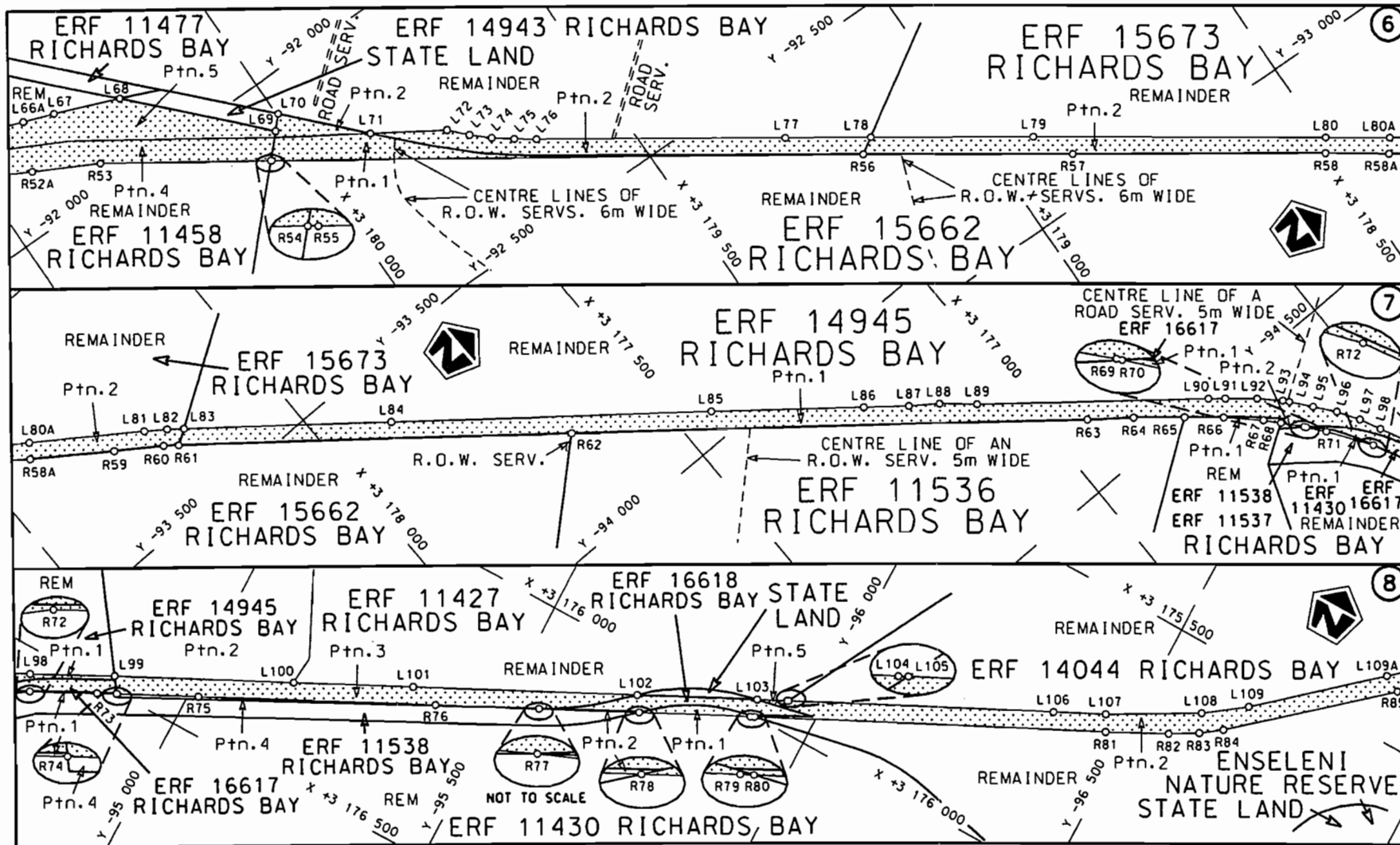



stel die podreserwe voor van 'n gedeelte
represents the road reserve of a portion
van Nasionale Roete N2 Seksie 29
of National Route Section

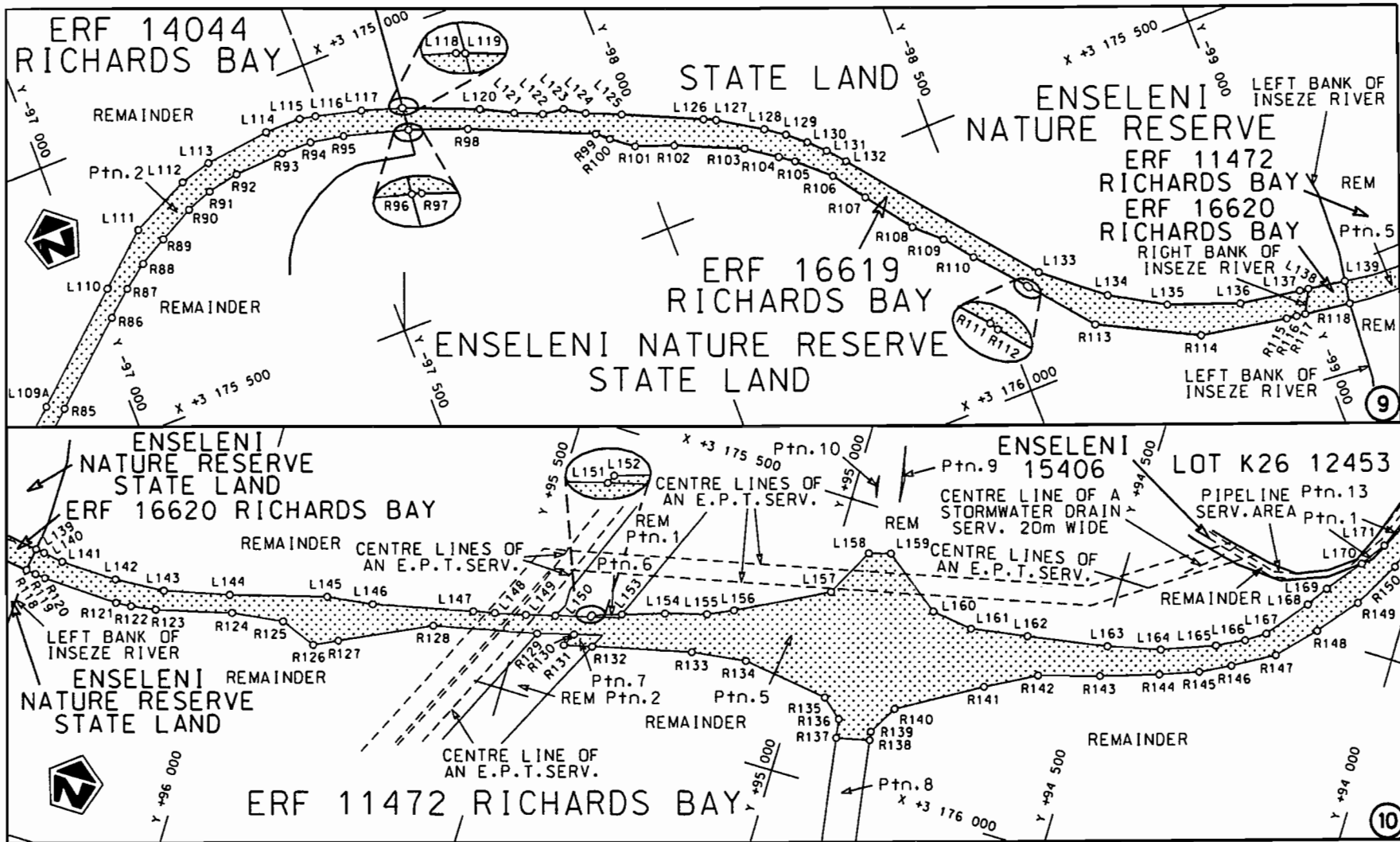
Vel Sheet 1 van 17
Plan P744/09

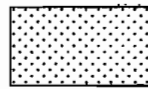


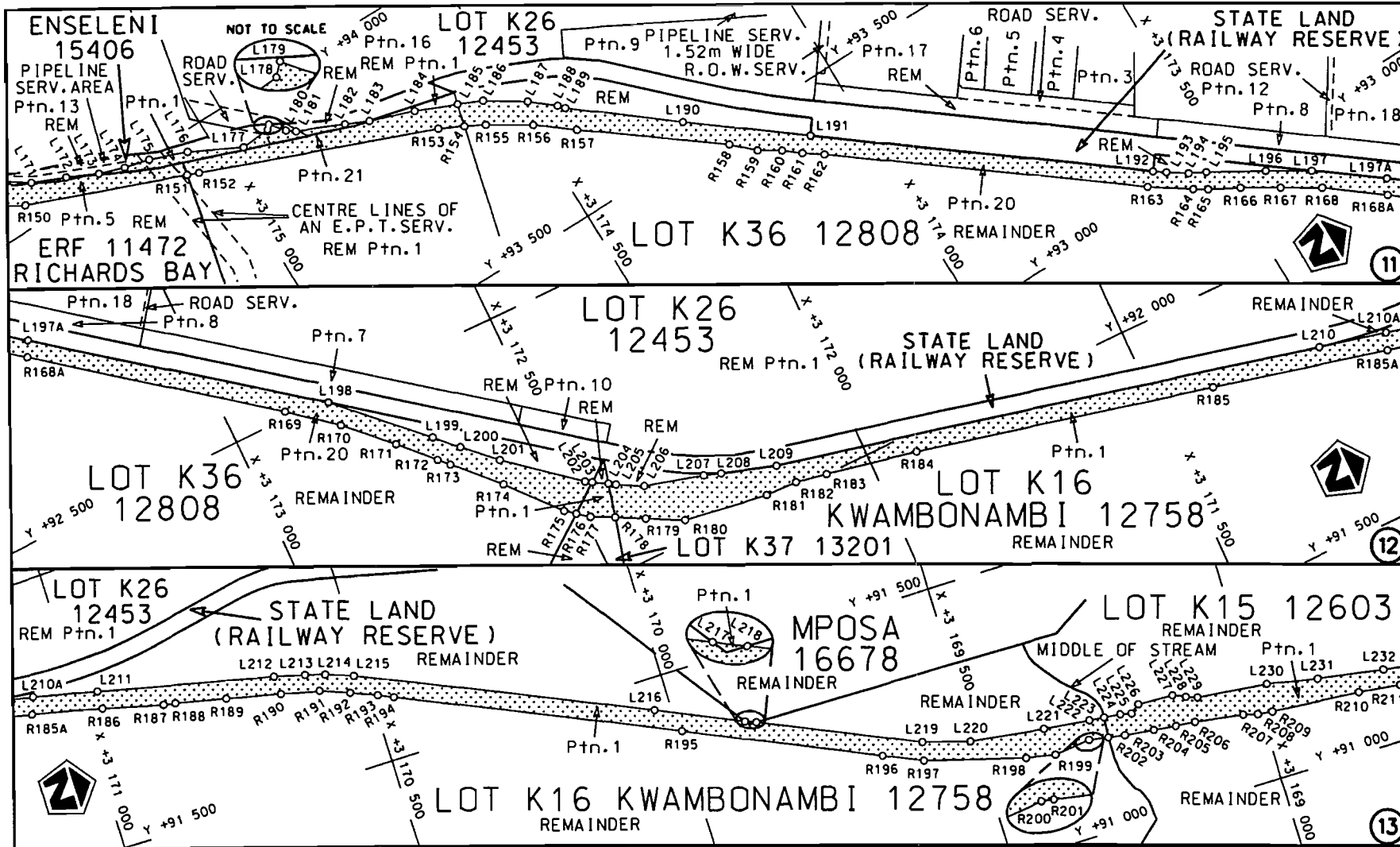
| | | | |
|--|--|--|---|
| <p>Die Suid Afrikaanse Nasionale Padagentskap Beperk The South African National Roads Agency Limited</p> | <p>Die figuur getoon The figure shown</p>  | <p>steldie padreserwe voor van 'n gedeelte represents the road reserve of a portion van Nasionale Roete N2 Seksie 29 of National Route</p> | <p>Vel Sheet 2 van of 17 Plan P744/09</p> |
|--|--|--|---|

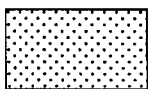


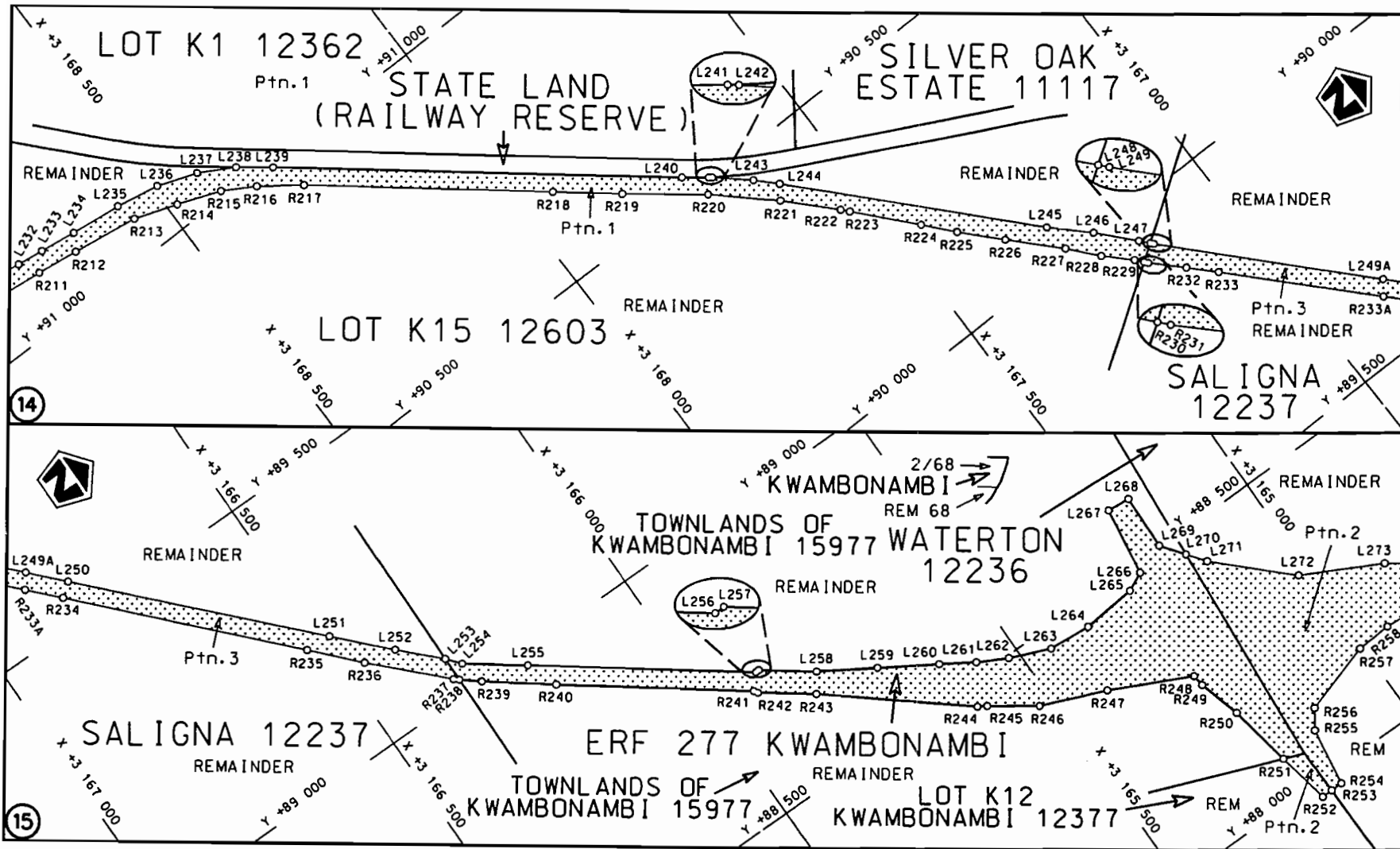
| | | | | |
|--|---|--|--|---|
| <p>Die Suid Afrikaanse Nasionale Padagentskap Beperk The South African National Roads Agency Limited</p> | <p>Die figuur getoon The figure shown</p> |  | <p>steldie padreserwe voor van 'n gedeelte represents the road reserve of a portion van Nasionale Roete N2 of National Route N2</p> <p>Seksie 29 Section</p> | <p>Vel Sheet 3 van 17 of Plan P744/09</p> |
|--|---|--|--|---|




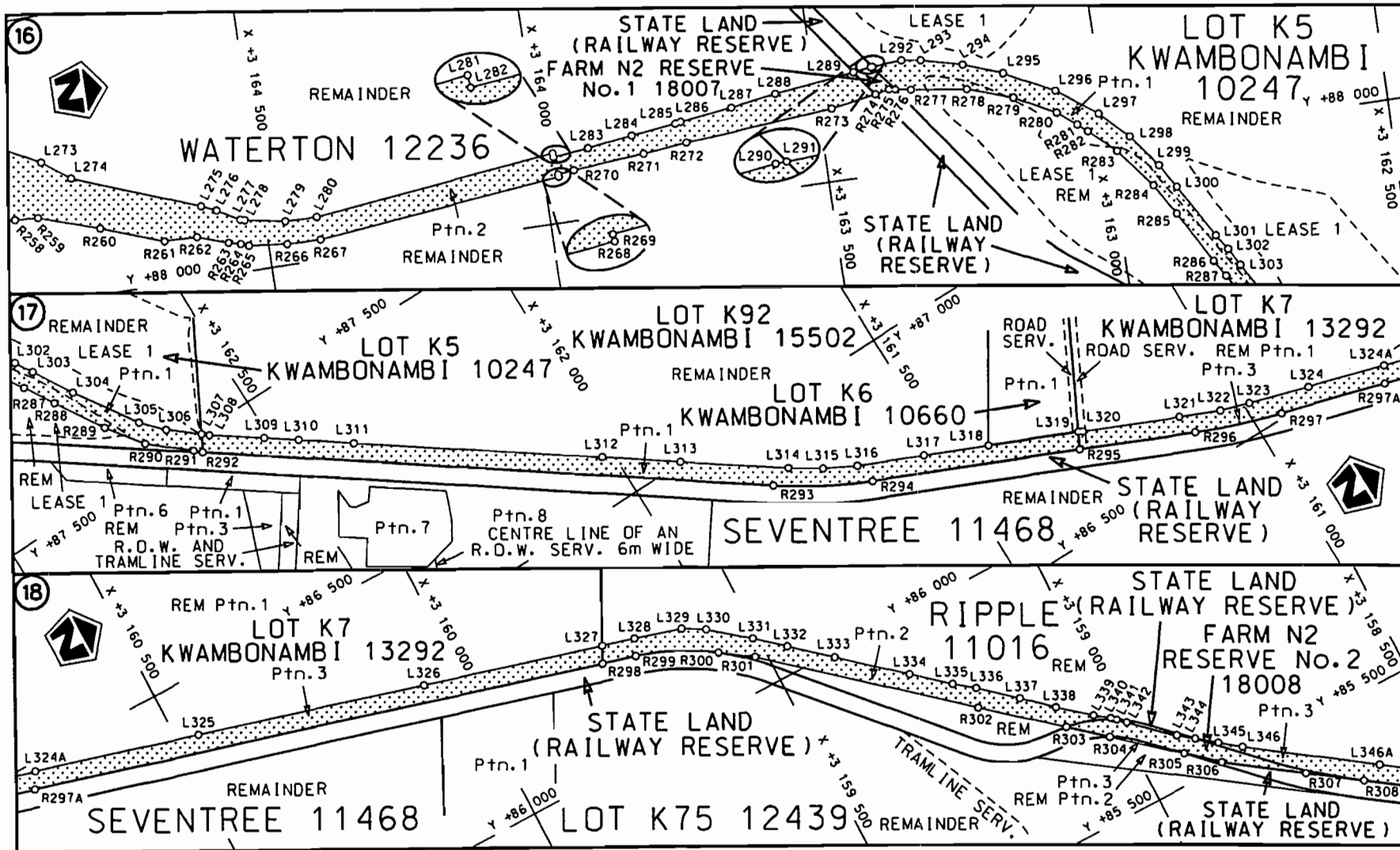
| | | | |
|--|--|---|---|
| <p>Die Suid Afrikaanse Nasionale Padagentskap Beperk The South African National Roads Agency Limited</p> | <p>Die figuur getoon The figure shown</p>  | <p>steldie padreserwe voor van 'n gedeelte represents the road reserve of a portion van Nasionale Roete of National Route</p> <p>N2 Seksie 29</p> | <p>Vel Sheet 4 van of 17 Plan P744/09</p> |
|--|--|---|---|




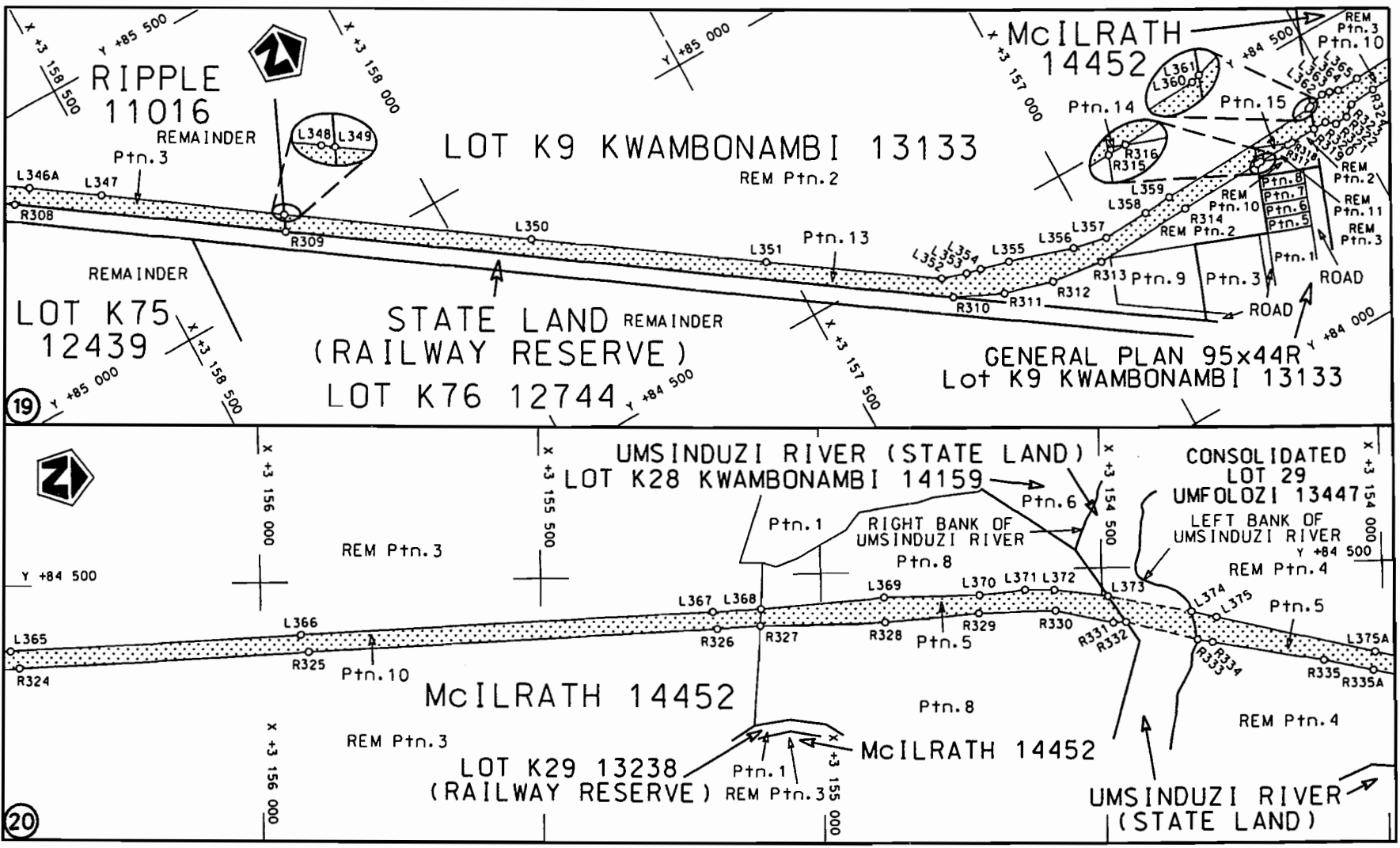
| | | | | |
|--|---------------------------------------|--|--|-----------------------------------|
| Die Suid Afrikaanse Nasionale Padagentskap Beperk The South African National Roads Agency Limited | Die figuur getoon The figure shown |  | steldie padreserwe voor van 'n gedeelte represents the road reserve of a portion van Nasionale Roete N2 Seksie 29 of National Route Section | Vel Sheet 5 of 17 Plan P744/09 |
|--|---------------------------------------|--|--|-----------------------------------|

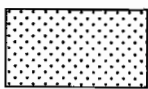


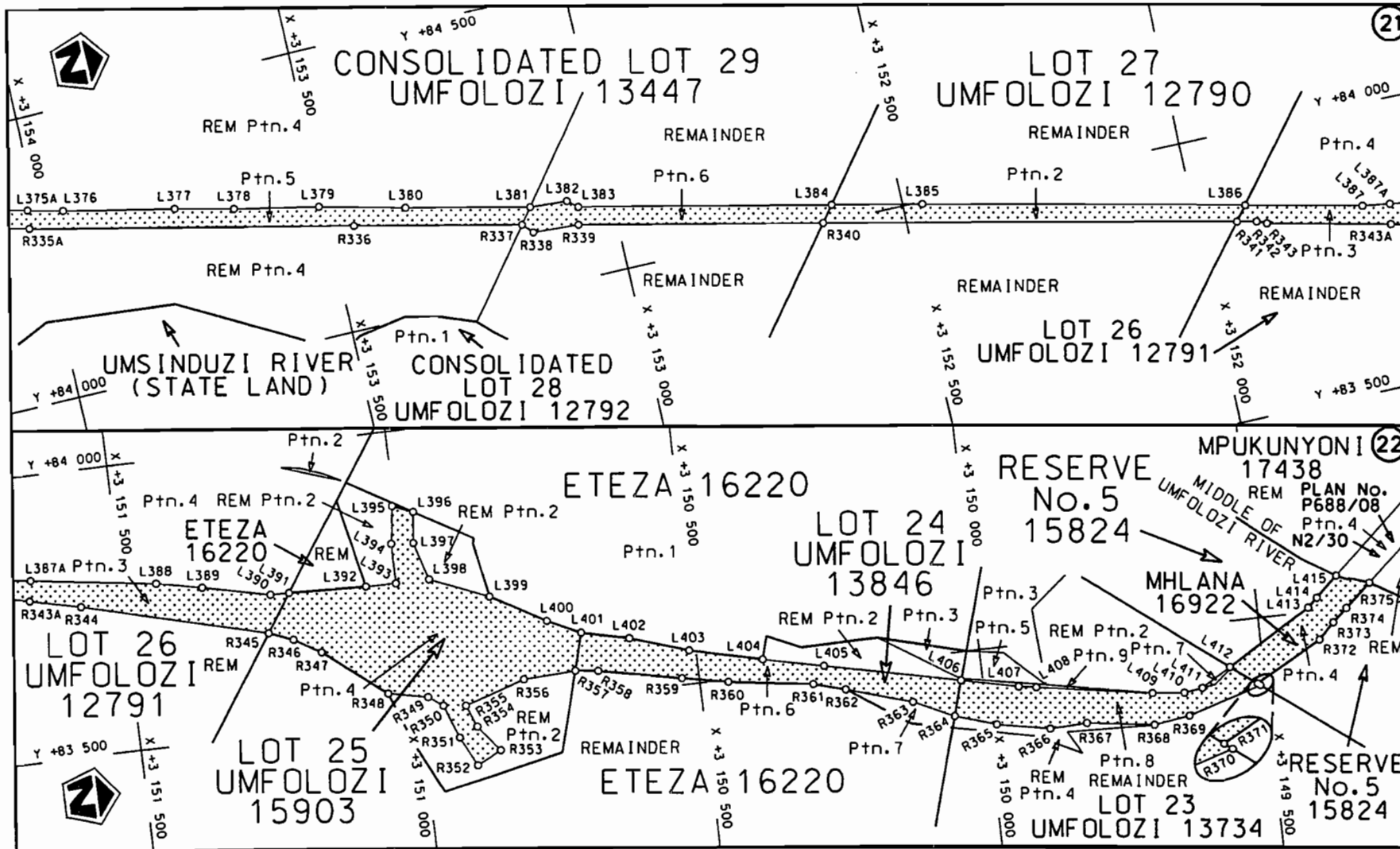
| | | | |
|--|--|--|---|
| <p>Die Suid Afrikaanse Nasionale Padagentskap Beperk The South African National Roads Agency Limited</p> | <p>Die figuur getoon The figure shown</p>  | <p>steldie padreserwe voor van 'n gedeelte represents the road reserve of a portion van Nasionale Roete N2 Seksie Section of National Route 29</p> | <p>Vel Sheet 6 van of 17 Plan P744/09</p> |
|--|--|--|---|



| | | | | |
|--|---------------------------------------|--|--|--|
| Die Suid Afrikaanse Nasionale Padagentskap Beperk The South African National Roads Agency Limited | Die figuur getoon The figure shown |  | steldie padreserwe voor van 'n gedeelte represents the road reserve of a portion van Nasionale Roete N2 Seksie 29 of National Route N2 Section 29 | Vel 7 van 17 Sheet of Plan P744/09 |
|--|---------------------------------------|--|--|--|



| | | | |
|--|--|--|--|
| <p>Die Suid Afrikaanse Nasionale Padagentskap Beperk The South African National Roads Agency Limited</p> | <p>Die figuur getoon The figure shown</p>  | <p>steldie padreserwe voor van 'n gedeelte represents the road reserve of a portion van Nasionale Roete N2 Seksie 29 of National Route N2 Section 29</p> | <p>Vel Sheet 8 van 17 Plan P744/09</p> |
|--|--|--|--|



Die Suid Afrikaanse Nasionale Padogentskap Beperk
The South African National Roads Agency Limited

Die figuur getoon
The figure shown



steldie podereserve voor van 'n gedeelte
represents the road reserve of a portion
van Nasionale Roete N2 Seksie 29
of National Route N2 Section 29

Vel Sheet 9 van 17
Plan P744/09

| PADRESERWE KOÖRDINATE | | | | / ROAD RESERVE CO-ORDINATES | | | |
|---------------------------|-------------|-------|---------|-----------------------------|-------------|-------|---------|
| LINKERKANT/LEFT HAND SIDE | | | | REGTERKANT/RIGHT HAND SIDE | | | |
| | Y | X | WG 31° | | Y | X | |
| L1 | -88 085.093 | 3 191 | 769.287 | R1 | -88 173.883 | 3 191 | 775.102 |
| L2 | -88 096.180 | 3 191 | 727.070 | R2 | -88 199.890 | 3 191 | 708.860 |
| L3 | -88 105.070 | 3 191 | 693.220 | R3 | -88 293.540 | 3 191 | 470.330 |
| L4 | -88 180.010 | 3 191 | 499.870 | R4 | -88 558.030 | 3 190 | 796.640 |
| L5 | -88 226.480 | 3 191 | 380.340 | R5 | -88 637.460 | 3 190 | 612.950 |
| L6 | -88 467.250 | 3 190 | 761.110 | R6 | -88 660.870 | 3 190 | 514.740 |
| L7 | -88 502.570 | 3 190 | 646.060 | R7 | -88 689.110 | 3 190 | 439.870 |
| L8 | -88 563.630 | 3 190 | 541.070 | R8 | -88 723.890 | 3 190 | 361.300 |
| L9 | -88 599.990 | 3 190 | 447.950 | R9 | -88 754.700 | 3 190 | 272.250 |
| L10 | -88 630.920 | 3 190 | 352.630 | R10 | -88 783.860 | 3 190 | 197.770 |
| L11 | -88 658.640 | 3 190 | 294.920 | R11 | -88 827.000 | 3 190 | 128.740 |
| L12 | -88 665.640 | 3 190 | 280.340 | R12 | -88 944.270 | 3 189 | 788.050 |
| L13 | -88 709.380 | 3 190 | 168.600 | R13 | -88 980.720 | 3 189 | 694.920 |
| L14 | -88 726.430 | 3 190 | 089.360 | R14 | -89 022.920 | 3 189 | 625.520 |
| L15 | -88 811.450 | 3 189 | 907.860 | R15 | -89 031.740 | 3 189 | 564.540 |
| L16 | -88 913.510 | 3 189 | 647.130 | R16 | -89 131.840 | 3 189 | 308.840 |
| L17 | -88 936.150 | 3 189 | 570.080 | R17 | -89 390.020 | 3 188 | 649.280 |
| L18 | -88 971.830 | 3 189 | 498.140 | R18 | -89 447.280 | 3 188 | 502.990 |
| L19 | -89 015.570 | 3 189 | 386.390 | R19 | -89 514.930 | 3 188 | 357.580 |
| L20 | -89 064.580 | 3 189 | 233.760 | R20 | -89 556.620 | 3 188 | 223.610 |
| L21 | -89 070.770 | 3 189 | 221.630 | R21 | -89 640.370 | 3 188 | 009.680 |
| L22 | -89 110.350 | 3 189 | 144.290 | R22 | -89 768.060 | 3 187 | 683.510 |
| L23 | -89 183.240 | 3 188 | 958.050 | R23 | -89 839.280 | 3 187 | 495.770 |
| L24 | -89 203.090 | 3 188 | 879.910 | R24 | -89 906.710 | 3 187 | 306.550 |
| L25 | -89 256.140 | 3 188 | 771.810 | R25 | -89 933.960 | 3 187 | 223.680 |
| L26 | -89 332.120 | 3 188 | 577.700 | R26 | -89 975.700 | 3 187 | 097.360 |
| L27 | -89 576.910 | 3 187 | 952.380 | R27 | -90 021.020 | 3 186 | 954.860 |
| L28 | -89 578.010 | 3 187 | 949.030 | R28 | -90 067.660 | 3 186 | 818.130 |
| L29 | -89 645.970 | 3 187 | 743.130 | R29 | -90 083.510 | 3 186 | 753.270 |
| L30 | -89 693.560 | 3 187 | 654.370 | R30 | -90 170.380 | 3 186 | 473.180 |
| L31 | -89 764.220 | 3 187 | 468.140 | R31 | -90 439.000 | 3 185 | 607.140 |
| L32 | -89 857.060 | 3 187 | 203.850 | R32 | -90 472.320 | 3 185 | 512.860 |
| L33 | -89 890.850 | 3 187 | 069.600 | R33 | -90 492.490 | 3 185 | 434.940 |
| L34 | -89 942.180 | 3 186 | 939.440 | R34 | -90 503.080 | 3 185 | 402.780 |
| L35 | -90 001.390 | 3 186 | 748.430 | R35 | -90 554.650 | 3 185 | 246.260 |
| L36 | -90 020.920 | 3 186 | 607.890 | R36 | -90 570.560 | 3 185 | 187.140 |
| L37 | -90 085.680 | 3 186 | 456.730 | R37 | -90 729.330 | 3 184 | 670.930 |
| L38 | -90 108.020 | 3 186 | 404.590 | R38 | -90 851.760 | 3 184 | 331.450 |
| L39 | -90 155.420 | 3 186 | 251.730 | R39 | -90 946.150 | 3 184 | 155.730 |
| L40 | -90 195.180 | 3 186 | 096.540 | R40 | -90 994.490 | 3 184 | 065.800 |
| L41 | -90 244.270 | 3 185 | 965.230 | R41 | -91 164.100 | 3 184 | 113.490 |
| L42 | -90 285.730 | 3 185 | 831.510 | R42 | -91 154.750 | 3 184 | 047.220 |
| L43 | -90 350.920 | 3 185 | 621.380 | R43 | -91 063.510 | 3 184 | 022.310 |
| L44 | -90 371.200 | 3 185 | 502.040 | R44 | -91 010.990 | 3 184 | 006.460 |
| L45 | -90 403.280 | 3 185 | 449.160 | R45 | -91 021.430 | 3 183 | 744.620 |
| L46 | -90 417.230 | 3 185 | 390.690 | R46 | -91 022.710 | 3 183 | 712.810 |
| L47 | -90 433.330 | 3 185 | 338.800 | R47 | -91 026.270 | 3 183 | 695.790 |
| L48 | -90 494.170 | 3 185 | 142.460 | R48 | -91 063.710 | 3 183 | 516.710 |
| L49 | -90 512.340 | 3 185 | 043.270 | R49 | -91 526.050 | 3 181 | 750.310 |
| L50 | -90 577.360 | 3 184 | 854.040 | R50 | -91 765.810 | 3 180 | 834.300 |
| L51 | -90 738.590 | 3 184 | 296.800 | R51 | -91 820.310 | 3 180 | 626.130 |

| | | | | |
|-------|----|-----|----|---------|
| Vel | 10 | Van | 17 | P744/09 |
| Sheet | | of | | |

| PADRESERWE KOÖRDINATE | | | | / | ROAD RESERVE CO-ORDINATES | | | |
|---------------------------|-------------|-------|---------|------|----------------------------|-------|---------|--|
| LINKERKANT/LEFT HAND SIDE | | | | | REGTERKANT/RIGHT HAND SIDE | | | |
| | Y | X | WG | 31° | | Y | X | |
| L52 | -90 742.930 | 3 184 | 027.720 | R52 | -91 868.890 | 3 180 | 465.060 | |
| L53 | -90 758.810 | 3 183 | 953.660 | R53 | -91 953.500 | 3 180 | 305.590 | |
| L54 | -90 763.560 | 3 183 | 931.490 | R54 | -92 123.620 | 3 180 | 054.580 | |
| L55 | -90 768.560 | 3 183 | 923.890 | R55 | -92 124.500 | 3 180 | 053.280 | |
| L56 | -90 905.150 | 3 183 | 715.760 | R56 | -92 711.140 | 3 179 | 186.500 | |
| L57 | -90 923.970 | 3 183 | 686.960 | R57 | -92 919.970 | 3 178 | 881.270 | |
| L58 | -90 930.020 | 3 183 | 666.240 | R58 | -93 171.560 | 3 178 | 509.960 | |
| L59 | -91 057.210 | 3 183 | 225.580 | R59 | -93 323.000 | 3 178 | 292.810 | |
| L60 | -91 060.300 | 3 183 | 213.790 | R60 | -93 372.320 | 3 178 | 220.070 | |
| L61 | -91 173.710 | 3 182 | 780.570 | R61 | -93 388.810 | 3 178 | 199.230 | |
| L62 | -91 461.990 | 3 181 | 678.370 | R62 | -93 821.240 | 3 177 | 652.620 | |
| L63 | -91 701.500 | 3 180 | 763.230 | R63 | -94 389.280 | 3 176 | 934.320 | |
| L64 | -91 742.860 | 3 180 | 606.060 | R64 | -94 439.030 | 3 176 | 868.540 | |
| L65 | -91 768.230 | 3 180 | 515.840 | R65 | -94 496.490 | 3 176 | 797.820 | |
| L66 | -91 799.470 | 3 180 | 419.160 | R66 | -94 540.970 | 3 176 | 744.290 | |
| L67 | -91 834.630 | 3 180 | 323.860 | R67 | -94 589.740 | 3 176 | 692.950 | |
| L68 | -91 880.070 | 3 180 | 212.790 | R68 | -94 613.020 | 3 176 | 672.680 | |
| L69 | -92 085.720 | 3 180 | 017.700 | R69 | -94 644.780 | 3 176 | 645.040 | |
| L70 | -92 064.050 | 3 179 | 996.720 | R70 | -94 647.580 | 3 176 | 642.830 | |
| L71 | -92 184.760 | 3 179 | 881.880 | R71 | -94 676.390 | 3 176 | 620.070 | |
| L72 | -92 256.520 | 3 179 | 768.480 | R72 | -94 748.040 | 3 176 | 570.130 | |
| L73 | -92 285.480 | 3 179 | 740.820 | R73 | -94 856.180 | 3 176 | 516.390 | |
| L74 | -92 312.030 | 3 179 | 711.880 | R74 | -94 887.620 | 3 176 | 500.910 | |
| L75 | -92 336.560 | 3 179 | 679.790 | R75 | -95 017.660 | 3 176 | 436.890 | |
| L76 | -92 359.490 | 3 179 | 647.210 | R76 | -95 394.420 | 3 176 | 250.820 | |
| L77 | -92 607.160 | 3 179 | 284.820 | R77 | -95 558.470 | 3 176 | 169.830 | |
| L78 | -92 693.720 | 3 179 | 157.950 | R78 | -95 718.400 | 3 176 | 091.030 | |
| L79 | -92 854.970 | 3 178 | 921.600 | R79 | -95 894.900 | 3 176 | 004.060 | |
| L80 | -93 148.630 | 3 178 | 493.780 | R80 | -95 902.350 | 3 176 | 000.390 | |
| L81 | -93 330.510 | 3 178 | 229.630 | R81 | -96 465.700 | 3 175 | 722.820 | |
| L82 | -93 353.860 | 3 178 | 196.700 | R82 | -96 566.050 | 3 175 | 671.150 | |
| L83 | -93 372.400 | 3 178 | 173.270 | R83 | -96 613.590 | 3 175 | 643.640 | |
| L84 | -93 601.260 | 3 177 | 884.040 | R84 | -96 648.390 | 3 175 | 617.900 | |
| L85 | -93 950.210 | 3 177 | 439.180 | R85 | -96 887.872 | 3 175 | 409.490 | |
| L86 | -94 119.520 | 3 177 | 225.460 | R86 | -97 024.090 | 3 175 | 290.560 | |
| L87 | -94 169.190 | 3 177 | 162.260 | R87 | -97 068.270 | 3 175 | 252.810 | |
| L88 | -94 200.730 | 3 177 | 117.720 | R88 | -97 110.070 | 3 175 | 222.010 | |
| L89 | -94 243.680 | 3 177 | 068.020 | R89 | -97 158.640 | 3 175 | 194.870 | |
| L90 | -94 498.670 | 3 176 | 743.900 | R90 | -97 220.280 | 3 175 | 163.410 | |
| L91 | -94 517.460 | 3 176 | 720.690 | R91 | -97 265.860 | 3 175 | 147.080 | |
| L92 | -94 553.490 | 3 176 | 677.340 | R92 | -97 321.050 | 3 175 | 135.540 | |
| L93 | -94 584.990 | 3 176 | 644.940 | R93 | -97 409.740 | 3 175 | 130.290 | |
| L94 | -94 594.170 | 3 176 | 637.430 | R94 | -97 463.890 | 3 175 | 130.150 | |
| L95 | -94 627.580 | 3 176 | 610.400 | R95 | -97 524.270 | 3 175 | 141.630 | |
| L96 | -94 661.260 | 3 176 | 583.240 | R96 | -97 634.520 | 3 175 | 172.640 | |
| L97 | -94 698.090 | 3 176 | 560.320 | R97 | -97 634.660 | 3 175 | 172.680 | |
| L98 | -94 734.100 | 3 176 | 542.580 | R98 | -97 732.250 | 3 175 | 208.740 | |
| L99 | -94 869.640 | 3 176 | 474.980 | R99 | -97 940.210 | 3 175 | 298.160 | |
| L100 | -95 157.010 | 3 176 | 334.170 | R100 | -97 960.580 | 3 175 | 315.710 | |
| L101 | -95 345.210 | 3 176 | 241.500 | R101 | -97 998.360 | 3 175 | 343.900 | |
| L102 | -95 701.130 | 3 176 | 065.650 | R102 | -98 063.940 | 3 175 | 367.640 | |

| | | | | |
|-------|----|-----|----|---------|
| Vel | 11 | Van | 17 | P744/09 |
| Sheet | | of | | |

| PADRESERWE KOÖRDINATE | | | | ROAD RESERVE CO-ORDINATES | | | |
|---------------------------|------------|---------------|----|----------------------------|------------|---------------|--|
| LINKERKANT/LEFT HAND SIDE | | | | REGTERKANT/RIGHT HAND SIDE | | | |
| | Y | X | WG | 33° | Y | X | |
| L149 | 95 495.520 | 3 175 862.180 | | R150 | 94 040.130 | 3 175 340.950 | |
| L150 | 95 444.700 | 3 175 848.660 | | R151 | 93 932.720 | 3 175 066.710 | |
| L151 | 95 384.630 | 3 175 832.790 | | R152 | 93 924.880 | 3 175 046.690 | |
| L152 | 95 383.000 | 3 175 829.340 | | R153 | 93 767.430 | 3 174 643.220 | |
| L153 | 95 332.470 | 3 175 812.680 | | R154 | 93 746.400 | 3 174 602.020 | |
| L154 | 95 259.480 | 3 175 788.640 | | R155 | 93 729.570 | 3 174 569.060 | |
| L155 | 95 188.560 | 3 175 768.440 | | R156 | 93 686.070 | 3 174 497.810 | |
| L156 | 95 144.770 | 3 175 748.290 | | R157 | 93 639.050 | 3 174 436.820 | |
| L157 | 94 989.020 | 3 175 667.640 | | R158 | 93 477.690 | 3 174 220.140 | |
| L158 | 94 942.910 | 3 175 583.060 | | R159 | 93 442.370 | 3 174 183.740 | |
| L159 | 94 904.100 | 3 175 572.150 | | R160 | 93 419.790 | 3 174 146.960 | |
| L160 | 94 802.990 | 3 175 648.270 | | R161 | 93 397.180 | 3 174 118.930 | |
| L161 | 94 731.020 | 3 175 658.590 | | R162 | 93 374.720 | 3 174 086.290 | |
| L162 | 94 631.510 | 3 175 642.970 | | R163 | 93 028.590 | 3 173 627.560 | |
| L163 | 94 490.730 | 3 175 619.790 | | R164 | 92 982.240 | 3 173 559.810 | |
| L164 | 94 397.880 | 3 175 598.190 | | R165 | 92 968.210 | 3 173 536.970 | |
| L165 | 94 305.750 | 3 175 563.360 | | R166 | 92 941.520 | 3 173 487.000 | |
| L166 | 94 258.710 | 3 175 539.810 | | R167 | 92 905.450 | 3 173 426.660 | |
| L167 | 94 226.210 | 3 175 518.040 | | R168 | 92 867.620 | 3 173 364.930 | |
| L168 | 94 170.170 | 3 175 448.300 | | R169 | 92 510.850 | 3 172 897.740 | |
| L169 | 94 145.560 | 3 175 412.200 | | R170 | 92 446.200 | 3 172 819.150 | |
| L170 | 94 098.370 | 3 175 352.220 | | R171 | 92 374.240 | 3 172 744.350 | |
| L171 | 94 068.510 | 3 175 310.460 | | R172 | 92 318.360 | 3 172 689.960 | |
| L172 | 94 043.790 | 3 175 251.480 | | R173 | 92 301.130 | 3 172 673.220 | |
| L173 | 94 018.370 | 3 175 198.010 | | R174 | 92 229.650 | 3 172 604.600 | |
| L174 | 94 002.630 | 3 175 153.120 | | R175 | 92 141.910 | 3 172 528.260 | |
| L175 | 93 991.800 | 3 175 108.960 | | R176 | 92 128.580 | 3 172 510.860 | |
| L176 | 93 967.180 | 3 175 044.790 | | R177 | 92 113.080 | 3 172 490.610 | |
| L177 | 93 921.920 | 3 174 955.980 | | R178 | 92 092.830 | 3 172 451.950 | |
| L178 | 93 924.840 | 3 174 902.720 | | R179 | 92 067.210 | 3 172 403.040 | |
| L179 | 93 931.460 | 3 174 896.100 | | R180 | 92 035.170 | 3 172 340.550 | |
| L180 | 93 906.240 | 3 174 875.390 | | R181 | 92 013.050 | 3 172 192.140 | |
| L181 | 93 895.600 | 3 174 860.850 | | R182 | 92 011.270 | 3 172 135.770 | |
| L182 | 93 860.260 | 3 174 780.460 | | R183 | 92 000.590 | 3 172 080.550 | |
| L183 | 93 842.120 | 3 174 740.240 | | R184 | 91 966.180 | 3 171 916.760 | |
| L184 | 93 815.290 | 3 174 662.800 | | R185 | 91 844.240 | 3 171 393.300 | |
| L185 | 93 785.410 | 3 174 592.050 | | R186 | 91 743.980 | 3 170 963.250 | |
| L186 | 93 768.110 | 3 174 551.100 | | R187 | 91 717.530 | 3 170 856.920 | |
| L187 | 93 726.120 | 3 174 484.930 | | R188 | 91 713.220 | 3 170 836.930 | |
| L188 | 93 692.360 | 3 174 443.590 | | R189 | 91 693.560 | 3 170 748.410 | |
| L189 | 93 681.700 | 3 174 434.150 | | R190 | 91 671.630 | 3 170 652.420 | |
| L190 | 93 551.930 | 3 174 268.750 | | R191 | 91 655.590 | 3 170 585.680 | |
| L191 | 93 415.660 | 3 174 090.890 | | R192 | 91 635.980 | 3 170 534.630 | |
| L192 | 93 047.280 | 3 173 604.880 | | R193 | 91 617.050 | 3 170 488.700 | |
| L193 | 93 033.510 | 3 173 585.220 | | R194 | 91 605.170 | 3 170 462.560 | |
| L194 | 93 010.660 | 3 173 552.270 | | R195 | 91 395.330 | 3 169 993.960 | |
| L195 | 92 996.320 | 3 173 523.970 | | R196 | 91 247.700 | 3 169 666.830 | |
| L196 | 92 944.570 | 3 173 433.590 | | R197 | 91 216.960 | 3 169 597.490 | |
| L197 | 92 903.660 | 3 173 364.870 | | R198 | 91 167.930 | 3 169 422.850 | |
| L198 | 92 492.040 | 3 172 821.760 | | R199 | 91 157.450 | 3 169 372.250 | |
| L199 | 92 357.130 | 3 172 680.750 | | R200 | 91 165.020 | 3 169 308.450 | |

| | | | | |
|-------|----|-----|----|---------|
| Vel | 13 | Van | 17 | P744/09 |
| Sheet | | of | | |

| PADRESERWE KOÖRDINATE | | | | / | ROAD RESERVE CO-ORDINATES | | | |
|---------------------------|------------|---------------|----|------|----------------------------|---------------|--|--|
| LINKERKANT/LEFT HAND SIDE | | | | | REGTERKANT/RIGHT HAND SIDE | | | |
| | Y | X | WG | 33° | Y | X | | |
| L200 | 92 320.460 | 3 172 644.070 | | R201 | 91 164.900 | 3 169 307.720 | | |
| L201 | 92 270.730 | 3 172 592.100 | | R202 | 91 158.946 | 3 169 273.792 | | |
| L202 | 92 172.790 | 3 172 472.350 | | R203 | 91 153.820 | 3 169 244.580 | | |
| L203 | 92 166.030 | 3 172 461.450 | | R204 | 91 147.850 | 3 169 192.160 | | |
| L204 | 92 150.950 | 3 172 437.120 | | R205 | 91 142.440 | 3 169 152.330 | | |
| L205 | 92 143.830 | 3 172 425.630 | | R206 | 91 138.670 | 3 169 117.000 | | |
| L206 | 92 119.490 | 3 172 380.230 | | R207 | 91 125.790 | 3 169 031.070 | | |
| L207 | 92 091.570 | 3 172 276.990 | | R208 | 91 119.000 | 3 169 006.070 | | |
| L208 | 92 081.870 | 3 172 248.010 | | R209 | 91 115.740 | 3 168 980.030 | | |
| L209 | 92 051.910 | 3 172 154.410 | | R210 | 91 103.060 | 3 168 823.980 | | |
| L210 | 91 829.060 | 3 171 194.790 | | R211 | 91 094.360 | 3 168 750.310 | | |
| L211 | 91 775.320 | 3 170 963.080 | | R212 | 91 084.740 | 3 168 676.530 | | |
| L212 | 91 704.570 | 3 170 655.110 | | R213 | 91 067.170 | 3 168 558.810 | | |
| L213 | 91 690.790 | 3 170 601.180 | | R214 | 91 040.290 | 3 168 482.180 | | |
| L214 | 91 679.800 | 3 170 567.590 | | R215 | 91 010.990 | 3 168 404.750 | | |
| L215 | 91 662.500 | 3 170 519.690 | | R216 | 90 979.140 | 3 168 349.590 | | |
| L216 | 91 444.230 | 3 170 029.470 | | R217 | 90 929.830 | 3 168 282.230 | | |
| L217 | 91 379.110 | 3 169 883.300 | | R218 | 90 650.830 | 3 167 936.740 | | |
| L218 | 91 370.880 | 3 169 864.840 | | R219 | 90 574.030 | 3 167 842.540 | | |
| L219 | 91 248.700 | 3 169 590.590 | | R220 | 90 480.220 | 3 167 722.130 | | |
| L220 | 91 224.550 | 3 169 508.320 | | R221 | 90 392.520 | 3 167 625.840 | | |
| L221 | 91 206.530 | 3 169 377.930 | | R222 | 90 314.600 | 3 167 551.640 | | |
| L222 | 91 197.500 | 3 169 297.320 | | R223 | 90 302.140 | 3 167 540.580 | | |
| L223 | 91 194.549 | 3 169 271.018 | | R224 | 90 206.210 | 3 167 454.170 | | |
| L224 | 91 191.240 | 3 169 241.520 | | R225 | 90 156.630 | 3 167 410.790 | | |
| L225 | 91 186.650 | 3 169 221.850 | | R226 | 90 092.210 | 3 167 350.130 | | |
| L226 | 91 198.570 | 3 169 205.320 | | R227 | 90 013.900 | 3 167 274.260 | | |
| L227 | 91 195.720 | 3 169 141.710 | | R228 | 89 964.750 | 3 167 232.260 | | |
| L228 | 91 185.230 | 3 169 119.510 | | R229 | 89 923.290 | 3 167 190.690 | | |
| L229 | 91 177.980 | 3 169 099.470 | | R230 | 89 910.040 | 3 167 179.310 | | |
| L230 | 91 164.970 | 3 168 975.130 | | R231 | 89 903.910 | 3 167 174.050 | | |
| L231 | 91 147.500 | 3 168 886.800 | | R232 | 89 856.050 | 3 167 126.160 | | |
| L232 | 91 128.600 | 3 168 770.730 | | R233 | 89 814.360 | 3 167 085.980 | | |
| L233 | 91 122.190 | 3 168 723.140 | | R234 | 89 549.060 | 3 166 834.880 | | |
| L234 | 91 113.420 | 3 168 658.910 | | R235 | 89 223.950 | 3 166 531.560 | | |
| L235 | 91 102.300 | 3 168 568.810 | | R236 | 89 146.680 | 3 166 459.800 | | |
| L236 | 91 087.920 | 3 168 491.290 | | R237 | 89 032.240 | 3 166 347.570 | | |
| L237 | 91 061.930 | 3 168 419.640 | | R238 | 89 025.330 | 3 166 339.180 | | |
| L238 | 91 027.690 | 3 168 357.970 | | R239 | 88 999.830 | 3 166 308.230 | | |
| L239 | 90 987.880 | 3 168 306.330 | | R240 | 88 919.760 | 3 166 202.660 | | |
| L240 | 90 532.350 | 3 167 741.280 | | R241 | 88 709.540 | 3 165 923.120 | | |
| L241 | 90 503.300 | 3 167 703.180 | | R242 | 88 702.630 | 3 165 918.520 | | |
| L242 | 90 499.090 | 3 167 697.800 | | R243 | 88 641.400 | 3 165 836.310 | | |
| L243 | 90 450.110 | 3 167 641.800 | | R244 | 88 458.140 | 3 165 615.920 | | |
| L244 | 90 416.500 | 3 167 608.940 | | R245 | 88 448.950 | 3 165 600.810 | | |
| L245 | 90 064.080 | 3 167 277.770 | | R246 | 88 394.480 | 3 165 524.040 | | |
| L246 | 90 005.680 | 3 167 217.780 | | R247 | 88 348.270 | 3 165 410.850 | | |
| L247 | 89 945.260 | 3 167 163.870 | | R248 | 88 280.230 | 3 165 271.870 | | |
| L248 | 89 929.670 | 3 167 150.220 | | R249 | 88 259.170 | 3 165 269.400 | | |
| L249 | 89 924.670 | 3 167 145.840 | | R250 | 88 183.490 | 3 165 248.290 | | |
| L250 | 89 567.340 | 3 166 811.070 | | R251 | 88 068.890 | 3 165 227.200 | | |

| | | | | |
|-------|----|-----|----|---------|
| Vel | 14 | Van | 17 | P744/09 |
| Sheet | | of | | |

| PADRESERWE KOÖRDINATE | | | | / | ROAD RESERVE CO-ORDINATES | | | |
|---------------------------|------------|---------------|----|------|----------------------------|---------------|--|--|
| LINKERKANT/LEFT HAND SIDE | | | | | REGTERKANT/RIGHT HAND SIDE | | | |
| | Y | X | WG | 33° | Y | X | | |
| L251 | 89 221.240 | 3 166 485.310 | | R252 | 87 973.750 | 3 165 209.630 | | |
| L252 | 89 134.560 | 3 166 403.220 | | R253 | 87 973.880 | 3 165 190.480 | | |
| L253 | 89 069.890 | 3 166 338.850 | | R254 | 87 974.030 | 3 165 169.630 | | |
| L254 | 89 049.890 | 3 166 318.950 | | R255 | 88 077.120 | 3 165 153.140 | | |
| L255 | 88 976.090 | 3 166 224.020 | | R256 | 88 109.780 | 3 165 130.710 | | |
| L256 | 88 734.470 | 3 165 900.700 | | R257 | 88 148.590 | 3 165 004.910 | | |
| L257 | 88 734.630 | 3 165 894.400 | | R258 | 88 152.610 | 3 164 943.850 | | |
| L258 | 88 673.780 | 3 165 813.080 | | R259 | 88 149.320 | 3 164 903.250 | | |
| L259 | 88 617.480 | 3 165 721.520 | | R260 | 88 115.190 | 3 164 795.560 | | |
| L260 | 88 559.260 | 3 165 628.160 | | R261 | 88 074.990 | 3 164 684.520 | | |
| L261 | 88 523.770 | 3 165 572.280 | | R262 | 88 072.740 | 3 164 625.680 | | |
| L262 | 88 495.390 | 3 165 519.940 | | R263 | 88 054.210 | 3 164 570.410 | | |
| L263 | 88 465.670 | 3 165 448.810 | | R264 | 88 048.830 | 3 164 549.340 | | |
| L264 | 88 459.340 | 3 165 373.570 | | R265 | 88 043.730 | 3 164 535.490 | | |
| L265 | 88 468.850 | 3 165 276.940 | | R266 | 88 036.290 | 3 164 466.560 | | |
| L266 | 88 484.340 | 3 165 244.060 | | R267 | 88 034.500 | 3 164 408.080 | | |
| L267 | 88 605.990 | 3 165 225.680 | | R268 | 88 080.440 | 3 163 973.490 | | |
| L268 | 88 602.430 | 3 165 185.760 | | R269 | 88 084.760 | 3 163 973.980 | | |
| L269 | 88 503.930 | 3 165 188.730 | | R270 | 88 088.050 | 3 163 945.320 | | |
| L270 | 88 463.800 | 3 165 159.200 | | R271 | 88 098.050 | 3 163 818.980 | | |
| L271 | 88 432.040 | 3 165 135.830 | | R272 | 88 106.010 | 3 163 740.250 | | |
| L272 | 88 316.720 | 3 165 017.850 | | R273 | 88 126.440 | 3 163 476.060 | | |
| L273 | 88 245.640 | 3 164 882.690 | | R274 | 88 140.310 | 3 163 396.280 | | |
| L274 | 88 210.000 | 3 164 833.670 | | R275 | 88 144.600 | 3 163 371.580 | | |
| L275 | 88 124.830 | 3 164 610.010 | | R276 | 88 142.840 | 3 163 360.230 | | |
| L276 | 88 113.270 | 3 164 583.450 | | R277 | 88 138.630 | 3 163 333.090 | | |
| L277 | 88 090.940 | 3 164 543.950 | | R278 | 88 125.470 | 3 163 235.450 | | |
| L278 | 88 088.780 | 3 164 536.190 | | R279 | 88 099.000 | 3 163 154.930 | | |
| L279 | 88 076.170 | 3 164 463.880 | | R280 | 88 061.190 | 3 163 082.500 | | |
| L280 | 88 074.490 | 3 164 408.970 | | R281 | 88 036.140 | 3 163 049.610 | | |
| L281 | 88 123.060 | 3 163 978.300 | | R282 | 88 022.140 | 3 163 033.320 | | |
| L282 | 88 115.670 | 3 163 977.470 | | R283 | 87 980.680 | 3 162 987.380 | | |
| L283 | 88 122.740 | 3 163 915.230 | | R284 | 87 911.680 | 3 162 932.580 | | |
| L284 | 88 132.510 | 3 163 835.430 | | R285 | 87 855.800 | 3 162 898.540 | | |
| L285 | 88 141.770 | 3 163 754.560 | | R286 | 87 764.860 | 3 162 844.610 | | |
| L286 | 88 143.330 | 3 163 744.430 | | R287 | 87 736.220 | 3 162 826.190 | | |
| L287 | 88 154.810 | 3 163 651.290 | | R288 | 87 683.920 | 3 162 794.950 | | |
| L288 | 88 166.340 | 3 163 570.660 | | R289 | 87 599.980 | 3 162 741.600 | | |
| L289 | 88 184.780 | 3 163 429.210 | | R290 | 87 537.650 | 3 162 694.990 | | |
| L290 | 88 188.890 | 3 163 397.720 | | R291 | 87 480.250 | 3 162 627.960 | | |
| L291 | 88 189.080 | 3 163 394.460 | | R292 | 87 468.960 | 3 162 615.180 | | |
| L292 | 88 192.090 | 3 163 342.350 | | R293 | 86 878.290 | 3 161 785.860 | | |
| L293 | 88 187.410 | 3 163 308.560 | | R294 | 86 791.770 | 3 161 632.600 | | |
| L294 | 88 169.320 | 3 163 236.310 | | R295 | 86 643.360 | 3 161 290.090 | | |
| L295 | 88 144.770 | 3 163 167.100 | | R296 | 86 560.840 | 3 161 099.660 | | |
| L296 | 88 099.570 | 3 163 079.630 | | R297 | 86 507.550 | 3 160 949.780 | | |
| L297 | 88 049.270 | 3 163 009.630 | | R298 | 86 175.030 | 3 159 768.510 | | |
| L298 | 88 002.820 | 3 162 961.910 | | R299 | 86 158.630 | 3 159 710.290 | | |
| L299 | 87 945.350 | 3 162 917.810 | | R300 | 86 094.870 | 3 159 575.330 | | |
| L300 | 87 902.500 | 3 162 891.650 | | R301 | 86 056.730 | 3 159 520.570 | | |
| L301 | 87 808.620 | 3 162 834.410 | | R302 | 85 793.020 | 3 159 211.530 | | |

| | | | | |
|-------|----|-----|----|---------|
| Vel | 15 | Van | 17 | P744/09 |
| Sheet | | of | | |

| PADRESERWE KOÖRDINATE | | | | / | ROAD RESERVE CO-ORDINATES | | | |
|---------------------------|------------|---------------|--------|------|----------------------------|---------------|--|--|
| LINKERKANT/LEFT HAND SIDE | | | | | REGTERKANT/RIGHT HAND SIDE | | | |
| | Y | X | WG 33° | | Y | X | | |
| L302 | 87 782.020 | 3 162 815.980 | | R303 | 85 688.870 | 3 159 087.220 | | |
| L303 | 87 751.230 | 3 162 798.100 | | R304 | 85 637.810 | 3 159 026.260 | | |
| L304 | 87 682.170 | 3 162 756.830 | | R305 | 85 550.700 | 3 158 922.290 | | |
| L305 | 87 574.610 | 3 162 684.180 | | R306 | 85 505.830 | 3 158 868.730 | | |
| L306 | 87 538.160 | 3 162 649.730 | | R307 | 85 419.490 | 3 158 743.170 | | |
| L307 | 87 497.140 | 3 162 600.090 | | R308 | 85 360.260 | 3 158 657.470 | | |
| L308 | 87 487.940 | 3 162 588.950 | | R309 | 85 083.950 | 3 158 255.280 | | |
| L309 | 87 431.370 | 3 162 508.250 | | R310 | 84 406.250 | 3 157 268.810 | | |
| L310 | 87 395.700 | 3 162 457.450 | | R311 | 84 368.010 | 3 157 185.610 | | |
| L311 | 87 338.740 | 3 162 379.580 | | R312 | 84 343.020 | 3 157 099.850 | | |
| L312 | 87 083.260 | 3 162 019.220 | | R313 | 84 330.960 | 3 157 006.540 | | |
| L313 | 87 001.940 | 3 161 904.830 | | R314 | 84 338.330 | 3 156 829.990 | | |
| L314 | 86 890.310 | 3 161 747.040 | | R315 | 84 343.440 | 3 156 678.990 | | |
| L315 | 86 857.160 | 3 161 695.650 | | R316 | 84 343.700 | 3 156 671.160 | | |
| L316 | 86 829.250 | 3 161 641.560 | | R317 | 84 345.610 | 3 156 614.610 | | |
| L317 | 86 781.220 | 3 161 531.480 | | R318 | 84 345.630 | 3 156 605.120 | | |
| L318 | 86 735.570 | 3 161 425.180 | | R319 | 84 345.730 | 3 156 559.670 | | |
| L319 | 86 671.050 | 3 161 275.870 | | R320 | 84 345.780 | 3 156 536.010 | | |
| L320 | 86 667.010 | 3 161 268.460 | | R321 | 84 333.880 | 3 156 520.930 | | |
| L321 | 86 598.380 | 3 161 109.420 | | R322 | 84 335.570 | 3 156 498.200 | | |
| L322 | 86 569.010 | 3 161 040.640 | | R323 | 84 350.060 | 3 156 479.930 | | |
| L323 | 86 552.730 | 3 160 989.660 | | R324 | 84 354.070 | 3 156 433.210 | | |
| L324 | 86 521.880 | 3 160 885.090 | | R325 | 84 375.380 | 3 155 914.730 | | |
| L325 | 86 402.570 | 3 160 462.400 | | R326 | 84 405.680 | 3 155 186.580 | | |
| L326 | 86 291.020 | 3 160 067.400 | | R327 | 84 409.210 | 3 155 108.790 | | |
| L327 | 86 202.710 | 3 159 754.260 | | R328 | 84 410.631 | 3 154 886.832 | | |
| L328 | 86 186.640 | 3 159 697.280 | | R329 | 84 424.359 | 3 154 720.840 | | |
| L329 | 86 162.370 | 3 159 613.920 | | R330 | 84 425.477 | 3 154 583.709 | | |
| L330 | 86 140.780 | 3 159 575.600 | | R331 | 84 402.535 | 3 154 481.148 | | |
| L331 | 86 087.060 | 3 159 508.660 | | R332 | 84 403.284 | 3 154 458.559 | | |
| L332 | 86 046.520 | 3 159 461.580 | | R333 | 84 368.826 | 3 154 332.314 | | |
| L333 | 85 990.570 | 3 159 396.200 | | R334 | 84 363.910 | 3 154 306.080 | | |
| L334 | 85 901.620 | 3 159 292.420 | | R335 | 84 326.830 | 3 154 108.190 | | |
| L335 | 85 850.860 | 3 159 232.270 | | R336 | 84 180.990 | 3 153 454.420 | | |
| L336 | 85 825.420 | 3 159 198.560 | | R337 | 84 117.100 | 3 153 166.120 | | |
| L337 | 85 773.010 | 3 159 136.880 | | R338 | 84 099.660 | 3 153 149.530 | | |
| L338 | 85 728.170 | 3 159 087.130 | | R339 | 84 094.980 | 3 153 068.110 | | |
| L339 | 85 684.570 | 3 159 034.480 | | R340 | 84 002.000 | 3 152 645.330 | | |
| L340 | 85 666.580 | 3 159 009.690 | | R341 | 83 844.680 | 3 151 929.880 | | |
| L341 | 85 658.970 | 3 159 001.450 | | R342 | 83 837.240 | 3 151 896.030 | | |
| L342 | 85 646.640 | 3 158 988.110 | | R343 | 83 830.130 | 3 151 878.890 | | |
| L343 | 85 584.770 | 3 158 919.600 | | R344 | 83 761.230 | 3 151 575.280 | | |
| L344 | 85 564.650 | 3 158 892.720 | | R345 | 83 675.440 | 3 151 249.880 | | |
| L345 | 85 539.040 | 3 158 858.520 | | R346 | 83 658.640 | 3 151 206.250 | | |
| L346 | 85 512.420 | 3 158 822.890 | | R347 | 83 630.990 | 3 151 158.880 | | |
| L347 | 85 299.390 | 3 158 514.060 | | R348 | 83 545.840 | 3 151 050.550 | | |
| L348 | 85 111.350 | 3 158 243.880 | | R349 | 83 531.620 | 3 150 982.120 | | |
| L349 | 85 110.870 | 3 158 243.190 | | R350 | 83 513.540 | 3 150 957.510 | | |
| L350 | 84 861.570 | 3 157 878.870 | | R351 | 83 454.750 | 3 150 935.720 | | |
| L351 | 84 622.960 | 3 157 529.960 | | R352 | 83 402.930 | 3 150 910.430 | | |
| L352 | 84 445.520 | 3 157 271.030 | | R353 | 83 424.400 | 3 150 867.550 | | |

| | | | | |
|-------|----|-----|----|---------|
| Vel | 16 | Van | 17 | P744/09 |
| Sheet | | of | | |

| PADRESERWE KOÖRDINATE | | | | ROAD RESERVE CO-ORDINATES | | | | |
|---------------------------|------------|---------------|--------|----------------------------|------------|---------------|----|---------|
| LINKERKANT/LEFT HAND SIDE | | | | REGTERKANT/RIGHT HAND SIDE | | | | |
| | Y | X | WG 33° | | Y | X | | |
| L353 | 84 431.350 | 3 157 227.710 | | R354 | 83 470.430 | 3 150 903.080 | | |
| L354 | 84 426.200 | 3 157 201.870 | | R355 | 83 508.880 | 3 150 918.300 | | |
| L355 | 84 413.030 | 3 157 151.050 | | R356 | 83 542.660 | 3 150 811.260 | | |
| L356 | 84 376.440 | 3 157 038.380 | | R357 | 83 547.180 | 3 150 718.350 | | |
| L357 | 84 363.860 | 3 156 977.980 | | R358 | 83 542.110 | 3 150 677.650 | | |
| L358 | 84 367.250 | 3 156 895.700 | | R359 | 83 511.720 | 3 150 530.520 | | |
| L359 | 84 369.520 | 3 156 844.860 | | R360 | 83 496.180 | 3 150 449.960 | | |
| L360 | 84 381.040 | 3 156 551.230 | | R361 | 83 474.640 | 3 150 301.180 | | |
| L361 | 84 382.630 | 3 156 545.730 | | R362 | 83 458.670 | 3 150 244.390 | | |
| L362 | 84 390.770 | 3 156 517.540 | | R363 | 83 422.960 | 3 150 127.210 | | |
| L363 | 84 388.230 | 3 156 503.770 | | R364 | 83 390.070 | 3 150 056.130 | | |
| L364 | 84 383.550 | 3 156 488.470 | | R365 | 83 367.270 | 3 149 984.130 | | |
| L365 | 84 384.770 | 3 156 448.970 | | R366 | 83 349.270 | 3 149 890.800 | | |
| L366 | 84 405.990 | 3 155 927.980 | | R367 | 83 351.860 | 3 149 825.260 | | |
| L367 | 84 436.190 | 3 155 194.290 | | R368 | 83 335.220 | 3 149 704.850 | | |
| L368 | 84 439.250 | 3 155 107.290 | | R369 | 83 344.080 | 3 149 640.020 | | |
| L369 | 84 455.032 | 3 154 888.121 | | R370 | 83 383.250 | 3 149 508.600 | | |
| L370 | 84 456.249 | 3 154 719.380 | | R371 | 83 386.730 | 3 149 513.250 | | |
| L371 | 84 463.338 | 3 154 637.649 | | R372 | 83 450.360 | 3 149 395.970 | | |
| L372 | 84 462.157 | 3 154 585.448 | | R373 | 83 477.150 | 3 149 368.100 | | |
| L373 | 84 449.489 | 3 154 489.629 | | R374 | 83 499.530 | 3 149 342.490 | | |
| L374 | 84 418.742 | 3 154 341.787 | | R375 | 83 538.748 | 3 149 297.611 | | |
| L375 | 84 408.060 | 3 154 297.960 | | | | | | |
| L376 | 84 324.030 | 3 153 953.190 | | | | | | |
| L377 | 84 282.260 | 3 153 759.680 | | | | | | |
| L378 | 84 258.250 | 3 153 656.720 | | | | | | |
| L379 | 84 227.650 | 3 153 506.950 | | | | | | |
| L380 | 84 191.460 | 3 153 358.980 | | | | | | |
| L381 | 84 143.990 | 3 153 144.960 | | | | | | |
| L382 | 84 139.860 | 3 153 078.800 | | | | | | |
| L383 | 84 125.250 | 3 153 061.420 | | | | | | |
| L384 | 84 029.740 | 3 152 623.330 | | | | | | |
| L385 | 83 995.350 | 3 152 465.570 | | | | | | |
| L386 | 83 869.660 | 3 151 909.680 | | | | | | |
| L387 | 83 824.190 | 3 151 708.560 | | | | | | |
| L388 | 83 785.390 | 3 151 438.010 | | | | | | |
| L389 | 83 768.600 | 3 151 357.580 | | | | | | |
| L390 | 83 741.560 | 3 151 238.580 | | | | | | |
| L391 | 83 740.490 | 3 151 204.770 | | | | | | |
| L392 | 83 735.300 | 3 151 067.420 | | L404 | 83 528.130 | 3 150 385.210 | | |
| L393 | 83 734.470 | 3 151 013.910 | | L405 | 83 504.150 | 3 150 278.390 | | |
| L394 | 83 804.070 | 3 151 013.520 | | L406 | 83 450.780 | 3 150 037.740 | | |
| L395 | 83 869.180 | 3 151 003.780 | | L407 | 83 428.580 | 3 149 937.660 | | |
| L396 | 83 855.080 | 3 150 968.720 | | L408 | 83 423.640 | 3 149 906.830 | | |
| L397 | 83 801.010 | 3 150 975.240 | | L409 | 83 390.390 | 3 149 702.070 | | |
| L398 | 83 734.700 | 3 150 955.490 | | L410 | 83 385.010 | 3 149 644.470 | | |
| L399 | 83 692.680 | 3 150 854.470 | | L411 | 83 389.670 | 3 149 611.390 | | |
| L400 | 83 638.760 | 3 150 758.090 | | L412 | 83 420.620 | 3 149 558.680 | | |
| L401 | 83 611.140 | 3 150 699.880 | | L413 | 83 507.770 | 3 149 409.960 | | |
| L402 | 83 591.560 | 3 150 615.820 | | L414 | 83 522.920 | 3 149 392.990 | | |
| L403 | 83 558.160 | 3 150 512.100 | | L415 | 83 557.284 | 3 149 354.498 | | |
| | | | | Vel | 17 | Van | 17 | P744/09 |
| | | | | Sheet | | of | | |