

Government Gazette

Staatskoerant

REPUBLIC OF SOUTH AFRICA  
REPUBLIEK VAN SUID-AFRIKA

Vol. 545

Pretoria, 12 November 2010

No. 33706

**IMPORTANT NOTICE**

The Government Printing Works will not be held responsible for faxed documents not received due to errors on the fax machine or faxes received which are unclear or incomplete. Please be advised that an "OK" slip, received from a fax machine, will not be accepted as proof that documents were received by the GPW for printing. If documents are faxed to the GPW it will be the sender's responsibility to phone and confirm that the documents were received in good order.

Furthermore the Government Printing Works will also not be held responsible for cancellations and amendments which have not been done on original documents received from clients.

**CONTENTS****INHOUD**

<i>No.</i>	<i>Page No.</i>	<i>Gazette No.</i>	<i>No.</i>	<i>Bladsy No.</i>	<i>Koerant No.</i>
<b>GOVERNMENT NOTICE</b>			<b>GOEWERMENSKENNISGEWING</b>		
<b>Transport, Department of</b>			<b>Vervoer, Departement van</b>		
<i>Government Notice</i>			<i>Goewermentskennisgewing</i>		
994			994		
South African National Roads Agency Limited and the National Roads Act (7/1998): The South African National Roads Agency Limited: Declaration Amendment of National Road N10 Section 6: Amendment of Declaration No. 630 of 2005 .....	3	33706	Suid-Afrikaanse Nasionale Padagentskap Beperk en die Nasionale Paaie Wet (7/1998): Die Suid-Afrikaanse Nasionale Padagentskap Beperk: Verklaring Wysiging van Nasionale Pad N10 Seksie 6: Wysiging van Verklaring No. 630 van 2005 .....	4	33706

---

**GOVERNMENT NOTICE**

---

**DEPARTMENT OF TRANSPORT**

No. 994

12 November 2010

**THE SOUTH AFRICAN NATIONAL ROADS  
AGENCY LIMITED**

Registration No: 98/09584/06

---

**DECLARATION AMENDMENT OF NATIONAL ROAD N10 SECTION 6****AMENDMENT OF DECLARATION No. 630 OF 2005**

By virtue of section 40(1)(b) of the South African National Roads Agency Limited and the National Roads Act, 1998 (Act No. 7 of 1998), I hereby amend Declaration No. 630 of 2005, by substituting the section of the descriptive declaration from Hanover up to De Aar, with the subjoined sheets 1 to 13 of Plan No. P676/08.

**[National Road N10 Section 6: Hanover (N1) – De Aar]**

  
**MINISTER OF TRANSPORT**

---

## GOEWERMENSKENNISGEWING

---

### DEPARTEMENT VAN VERVOER

No. 994

12 November 2010

## DIE SUID-AFRIKAANSE NASIONALE PADAGENTSKAP BEPERK

Registrasie No: 98/09584/06

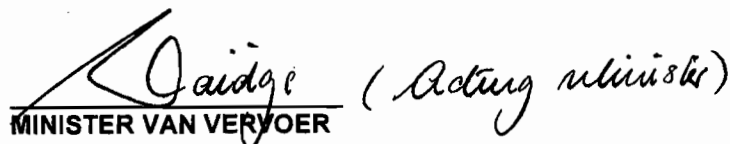
---

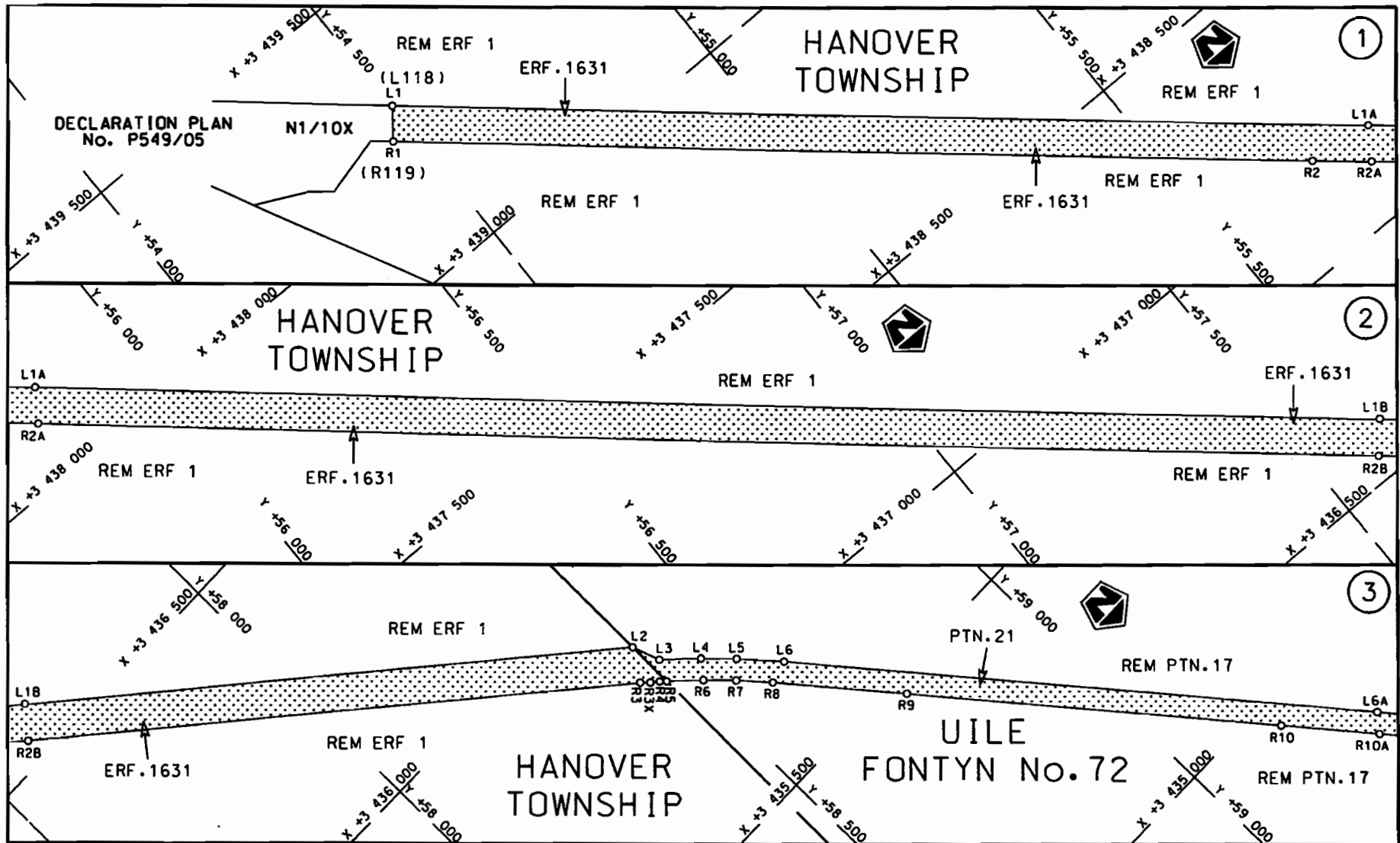
### VERKLARING WYSIGING VAN NASIONALE PAD N10 SEKSIE 6.

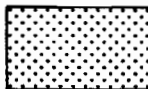
#### WYSIGING VAN VERKLARING NO. 630 VAN 2005

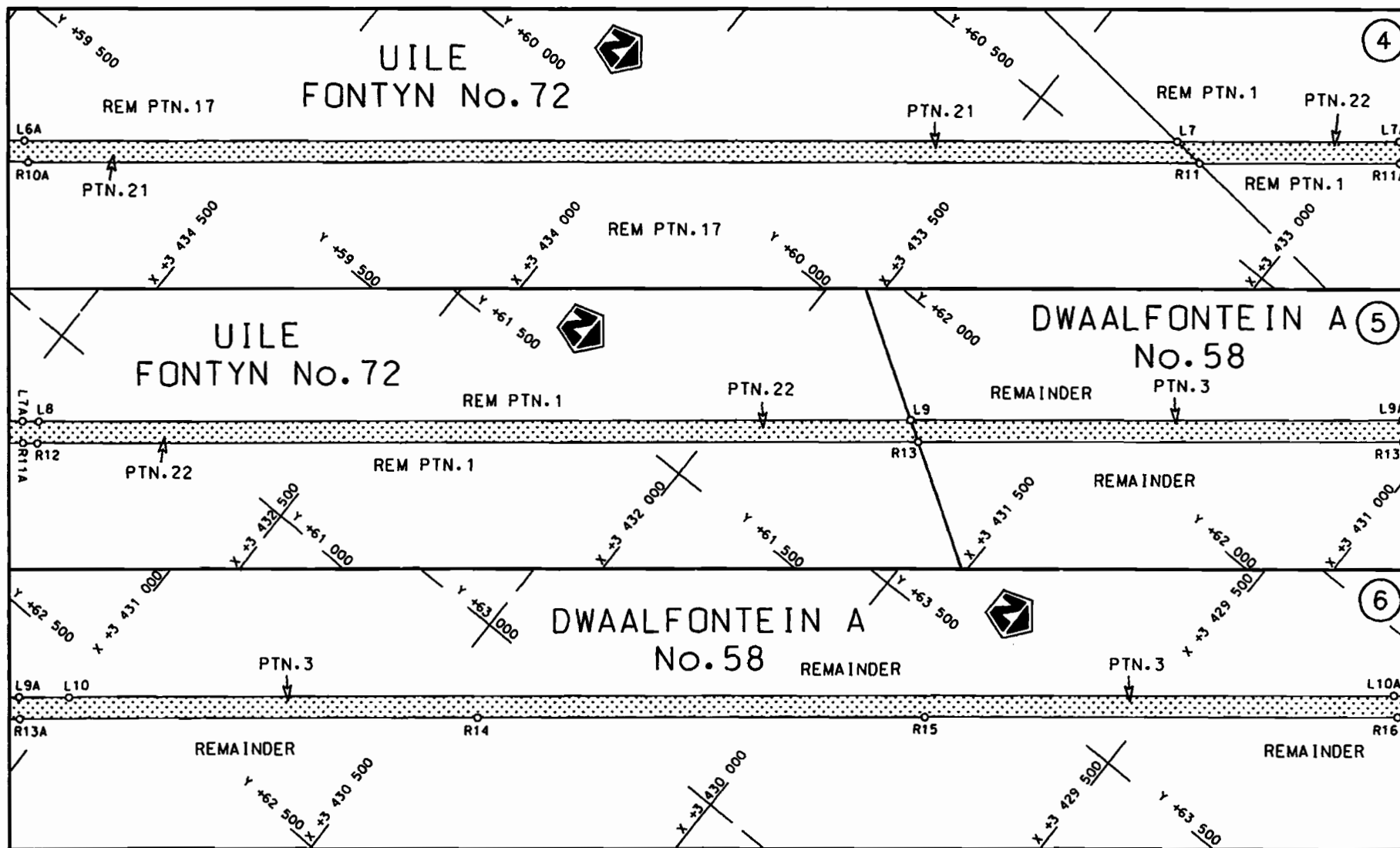
Kragtens Artikel 40(1)(b) van die Suid-Afrikaanse Nasionale Padagentskap Beperk en die Nasionale Paaie Wet, 1998 (Wet no. 7 van 1998), wysig ek hiermee Verklaring no. 630 van 2005, deur die gedeelte van die beskrywende verklaring vanaf Hanover tot by De Aar, te vervang met meegaande velle 1 tot 13 van Plan no. P676/08.

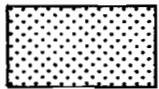
[Nasionale Pad N10 Seksie 6: Hanover (N1) – De Aar]

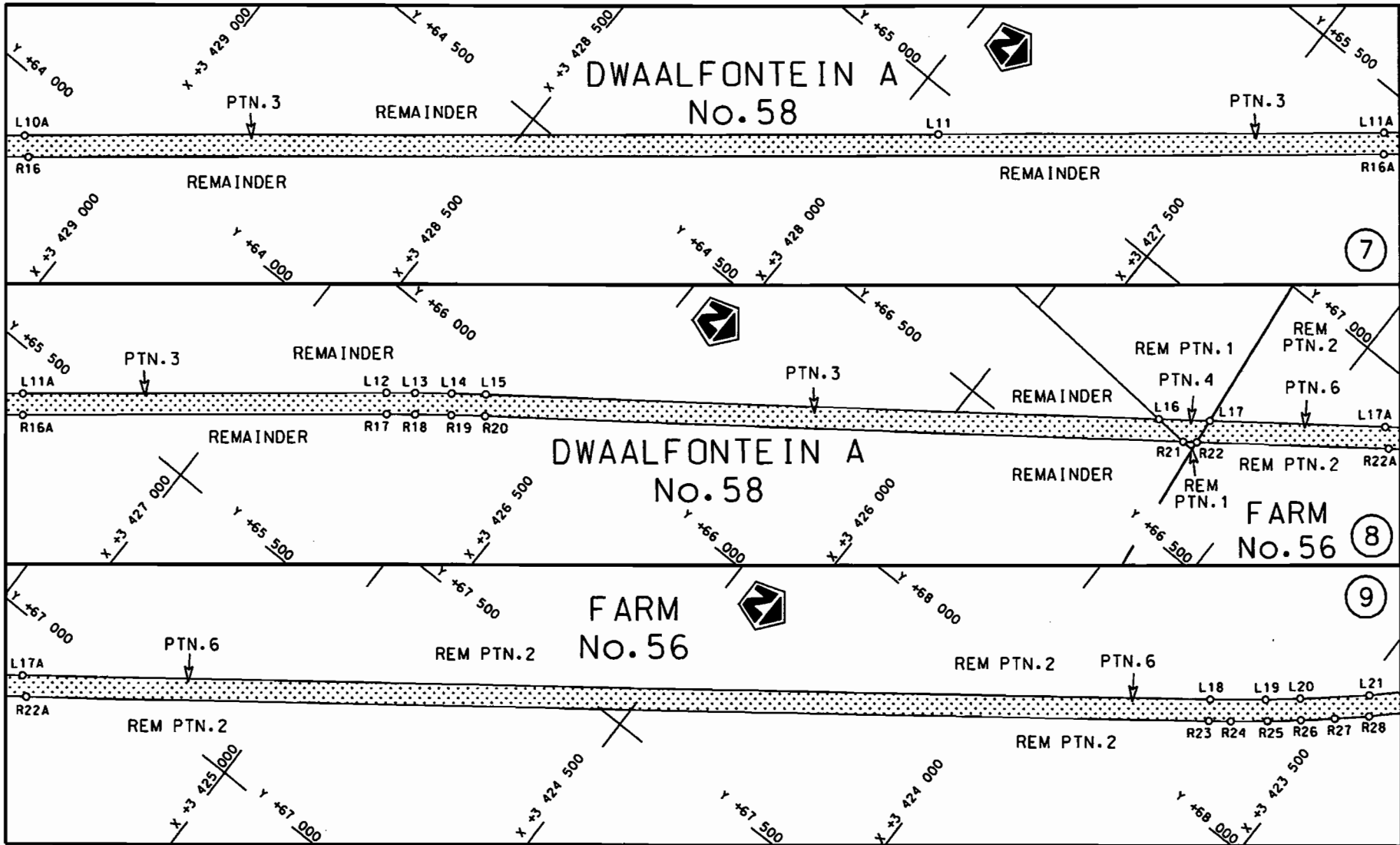
  
MINISTER VAN VERVOER



<p>Die Suid Afrikaanse Nasionale Padagentskap Beperk The South African National Roads Agency Limited</p>	<p>Die figuur getoon The figure shown</p>		<p>stel die padreserwe voor van 'n gedeelte represents the road reserve of a portion van Nasionale Roete N10 of National Route N10 Seksie 6 Section</p>	<p>Vel Sheet 1 van 13 of Plan P676/08</p>
--	---	---	---	---




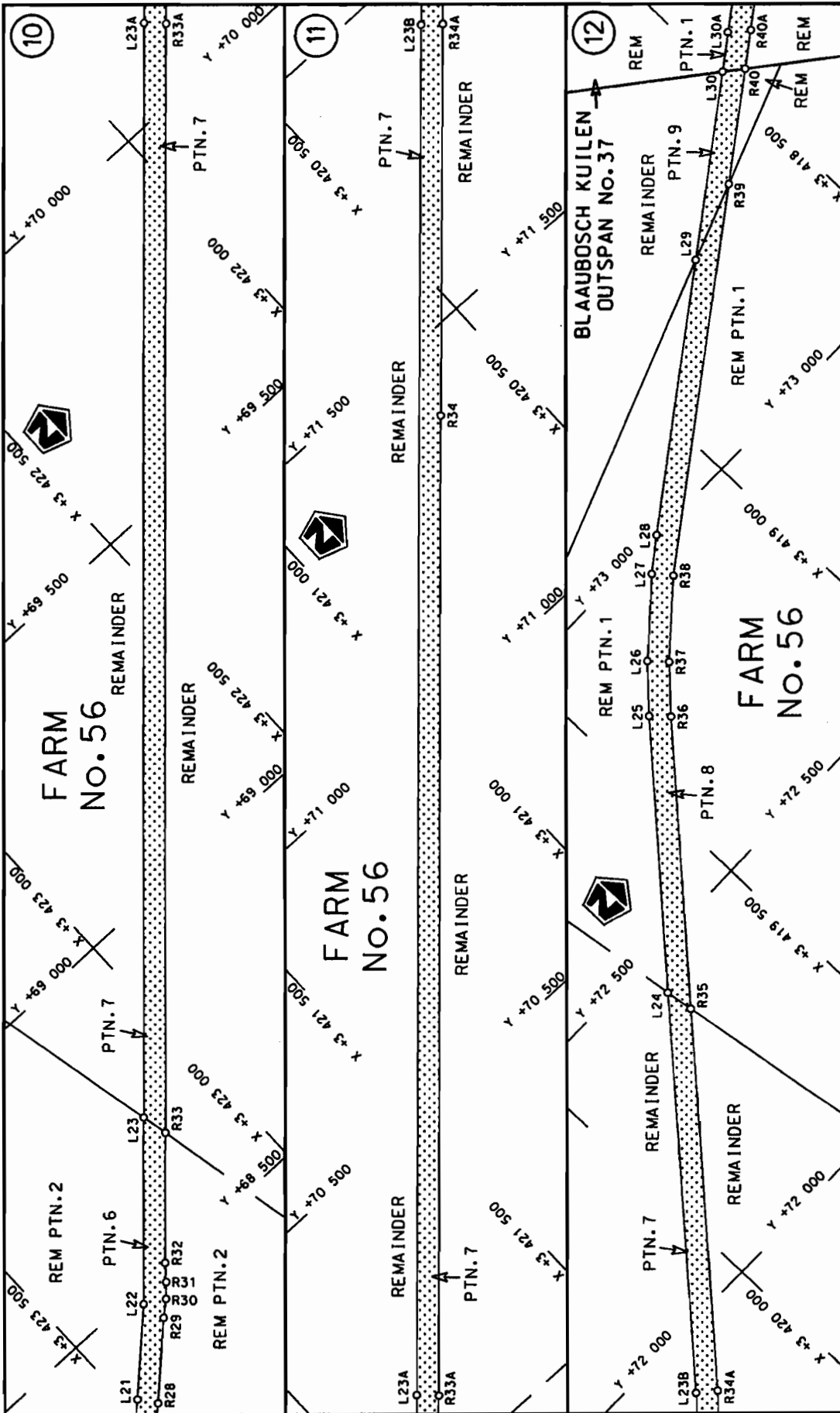
<p>Die Suid Afrikaanse Nasionale Padogentskap Beperk The South African National Roads Agency Limited</p>	<p>Die figuur getoon The figure shown</p>	<p></p> <p>steldie podreserwe voor van 'n gedeelte represents the road reserve of a portion van Nasionale Roete N10 Seksie Section 6</p>	<p>Vel Sheet 2 van of 13</p>
			<p>Plan P676/08</p>



STAATSKOERANT, 12 NOVEMBER 2010

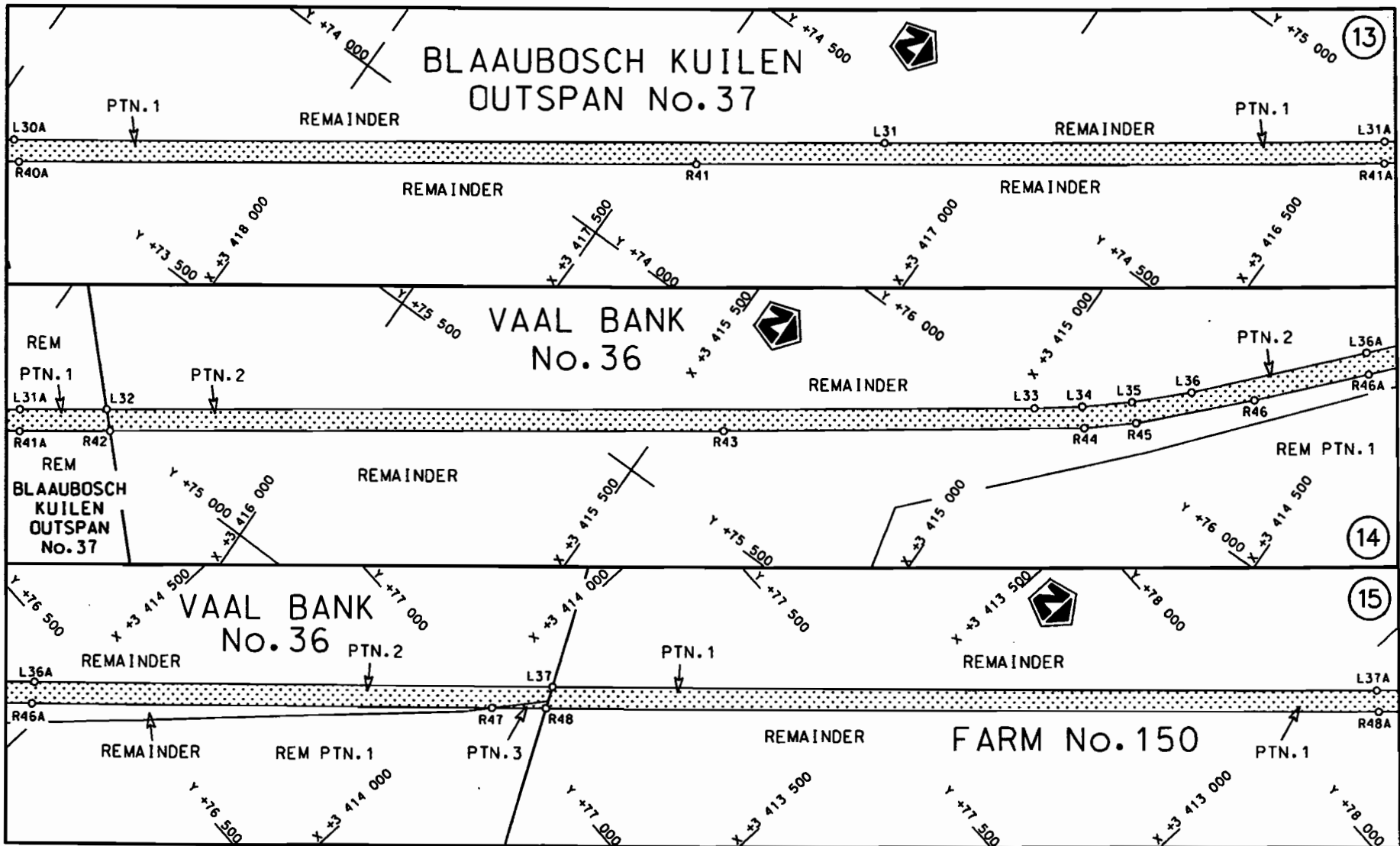
No. 33706 7

Die Suid Afrikaanse Nasionale Padogentskap Beperk The South African National Roads Agency Limited	Die figuur getoon The figure shown		steldie padreserwe voor van 'n gedeelte represents the road reserve of a portion van Nasionale Roete N10      Seksie Section      6 of National Route	Vel Sheet 3 van of 13
				Plan P676/08



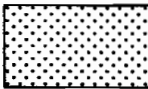
<p>Die Suid Afrikaanse Nasionale Padagentskap Beperk The South African National Roads Agency Limited</p>	<p>Die figuur getoon The figure shown</p>	<p>steldie podreserwe voor van 'n gedeelte represents the road reserve of a portion van Nasionale Roete N10 of National Route</p>	<p>Vel Sheet 4 of 13 Plan P676/08</p>
<p>6</p>		<p>N10</p>	
<p>Seksie</p>		<p>Section</p>	

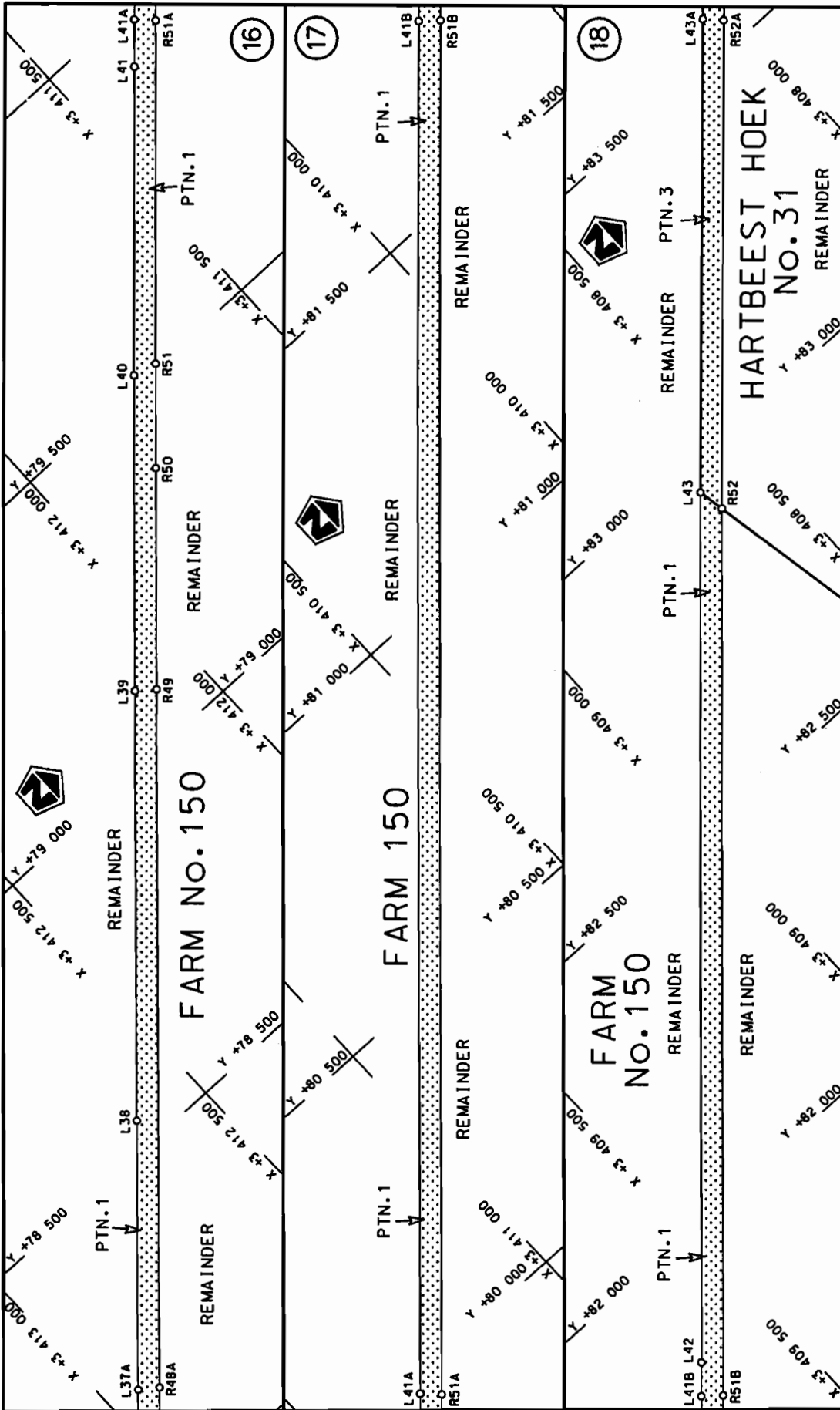


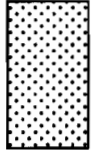


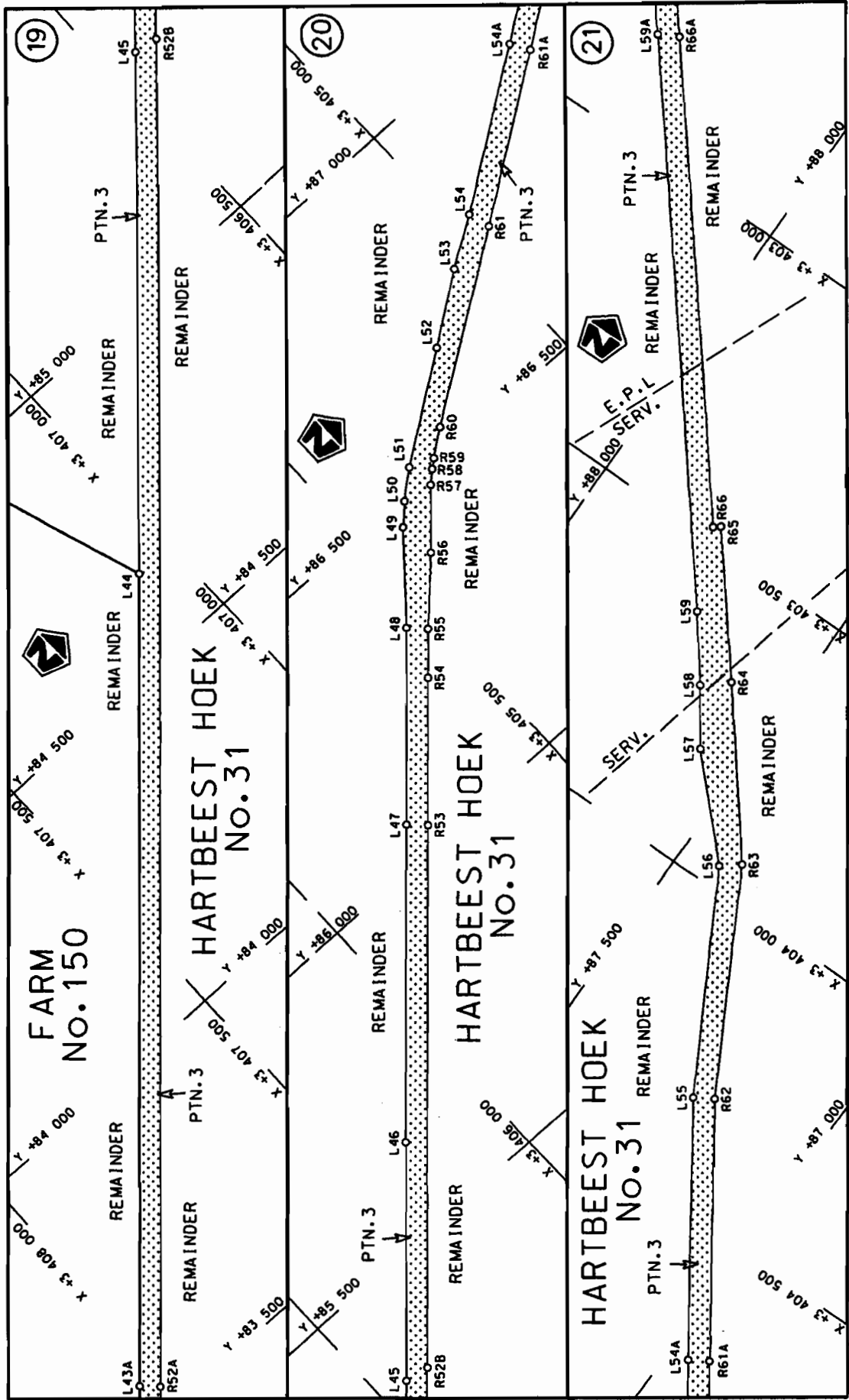
STAATSKOERANT, 12 NOVEMBER 2010

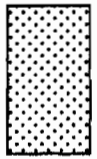
No. 33706 9

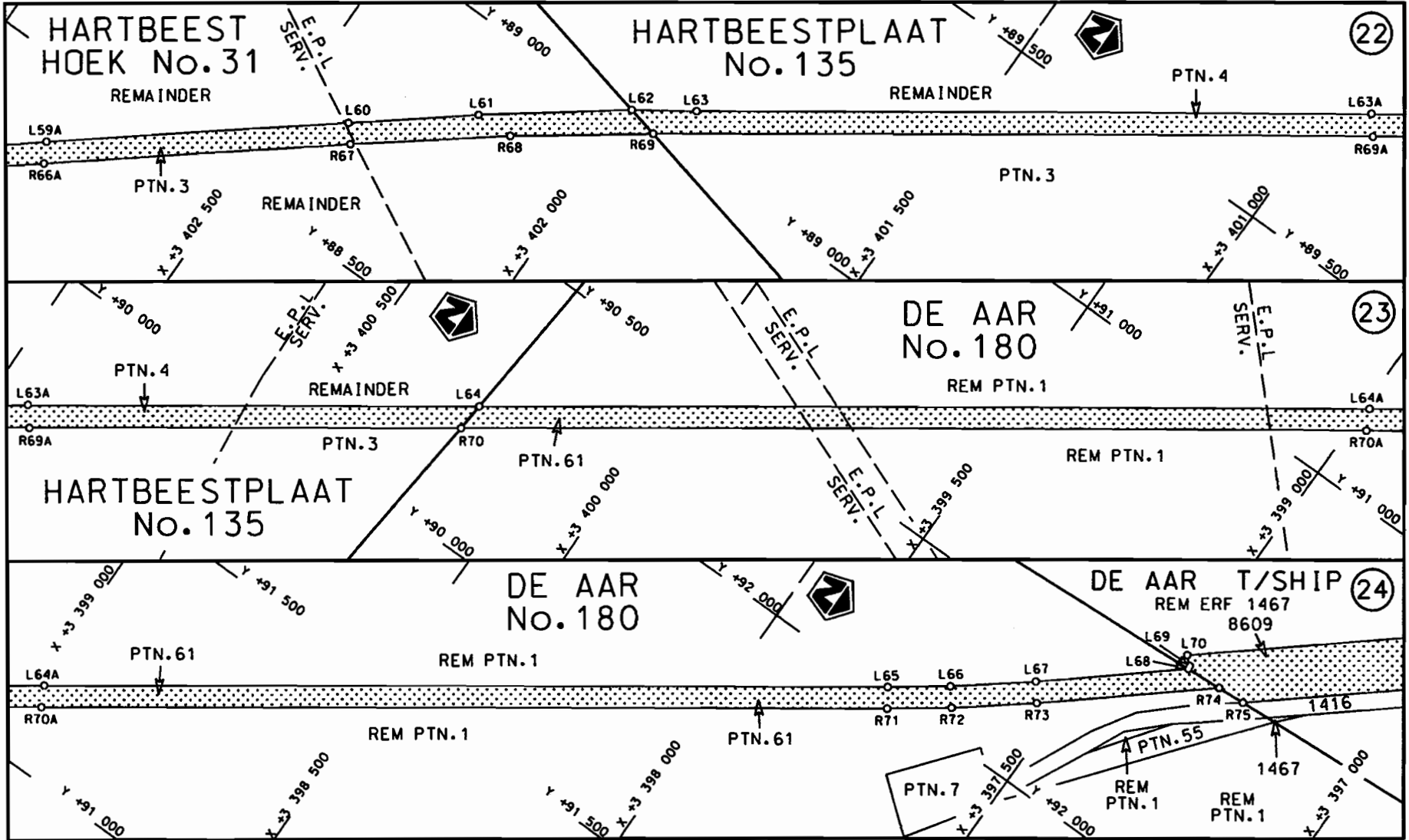
Die Suid Afrikaanse Nasionale Padagentskap Beperk	Die figuur getoon		stel die padreserwe voor van 'n gedeelte	Vel Sheet 5 van 13
The South African National Roads Agency Limited	The figure shown		represents the road reserve of a portion van Nasionale Roete N10      Seksie 6	Plan P676/08



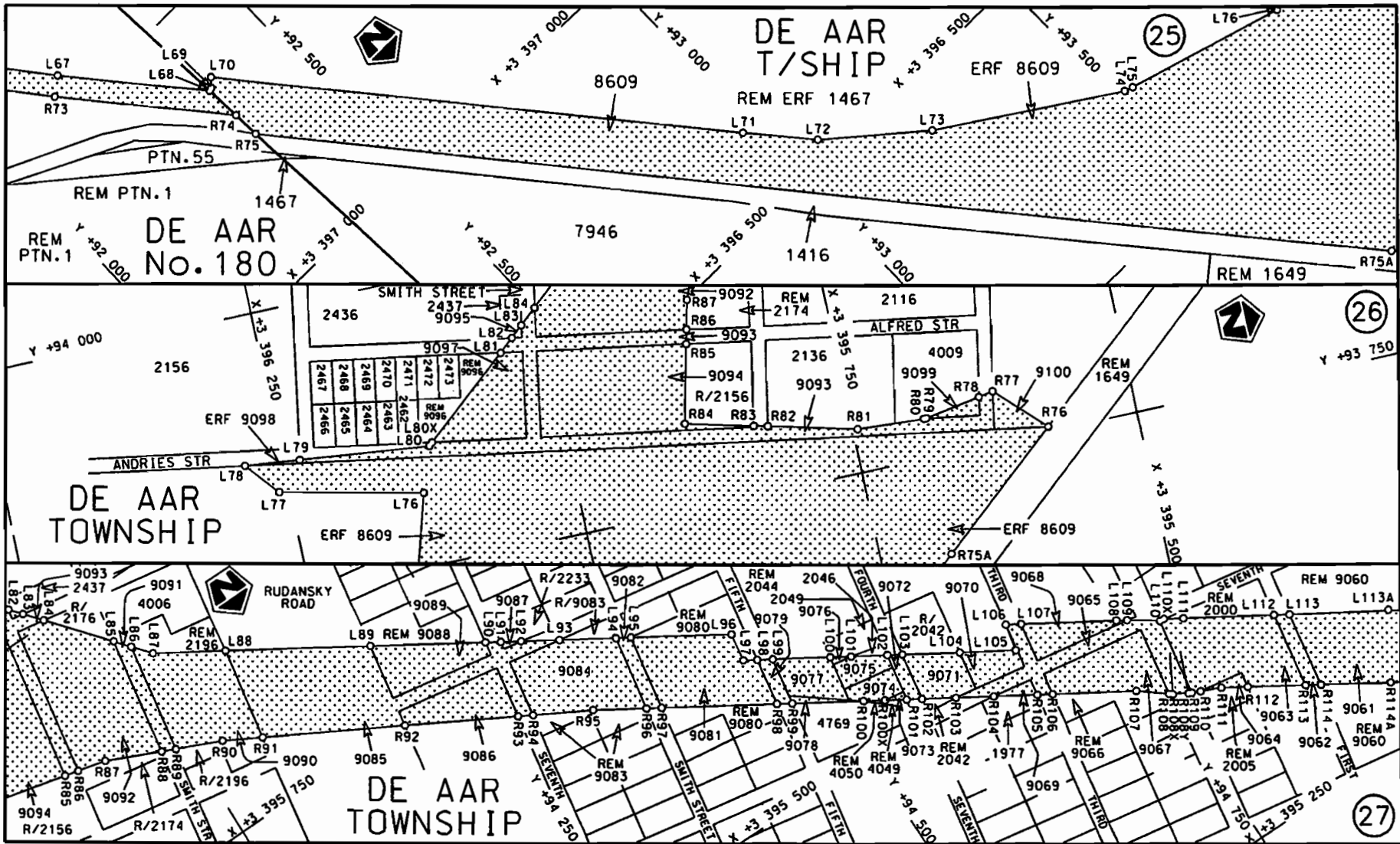
<p>Die Suid Afrikaanse Nasionale Padagentskap Beperk The South African National Roads Agency Limited</p>	<p>Die figuur getoon The figure shown</p> 	<p>stelt die padreserwe voor van 'n gedeelte represents the road reserve of a portion van Nasionale Roete N10 of National Route</p> <p>Seksie Section</p> <p>N10 6</p>
<p>Vel Sheet</p> <p>6 6</p> <p>van of</p> <p>13 13</p>		<p>Plan P676/08</p>

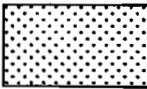


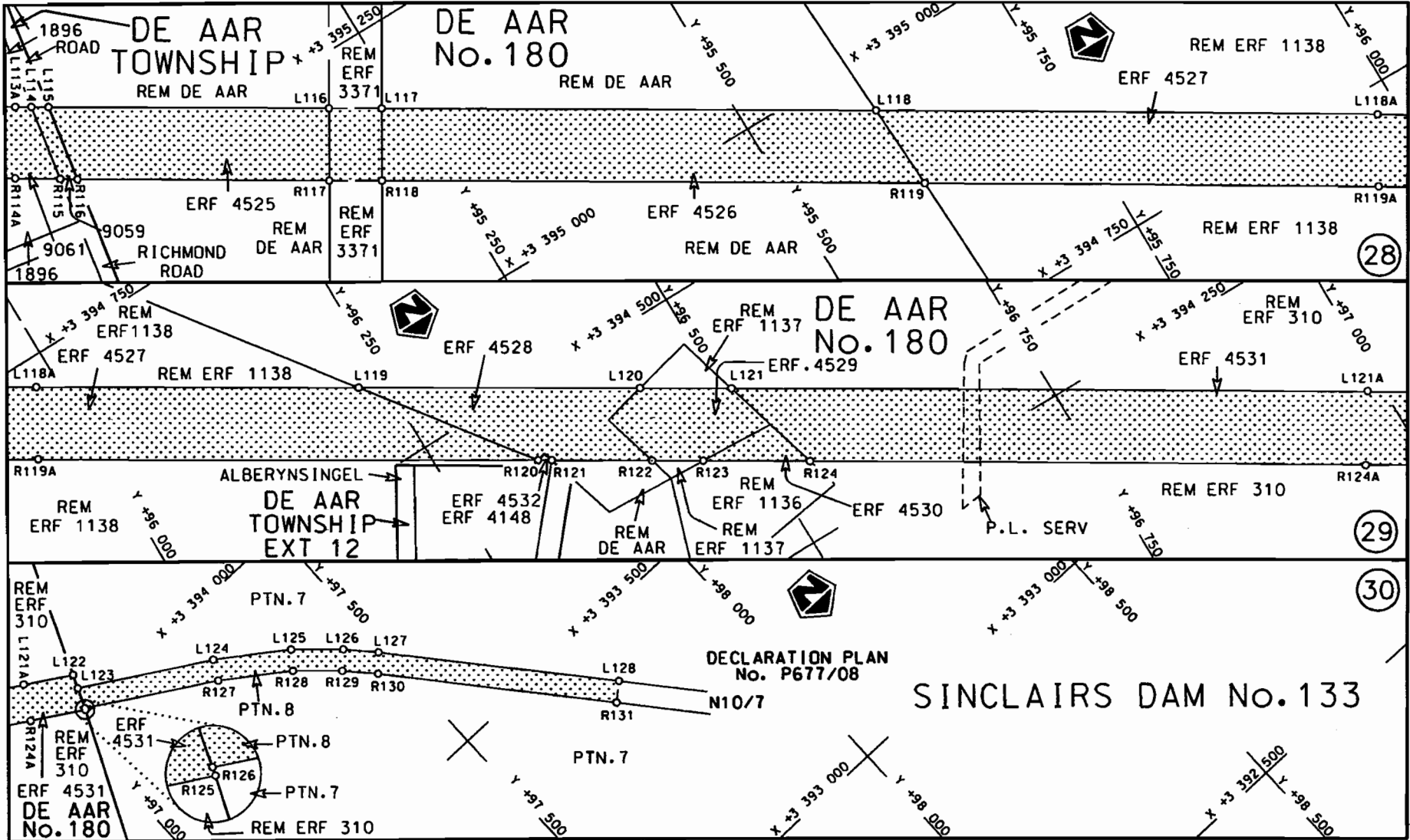
<p>Die Suid Afrikaanse Nasionale Padagentskap Beperk The South African National Roads Agency Limited</p>	<p>Die figuur getoon The figure shown</p>	<p>stetdie padreserwe voor van 'n gedeelte represents the road reserve of a portion van Nasionale Roete N10 of National Route</p>		<p>6</p>	<p>Plan P676/08</p>
<p>Vel Sheet 7 of 13</p>		<p>Section</p>			



<p>Die Suid Afrikaanse Nasionale Padagentskap Beperk The South African National Roads Agency Limited</p>	<p>Die figuur getoon The figure shown</p>		<p>steldie padreserwe voor van 'n gedeelte represents the road reserve of a portion van Nasionale Roete N10 of National Route</p>	<p>Vel Sheet 8 van of 13</p>
			<p>Seksie Section 6</p>	<p>Plan P676/08</p>



Die Suid Afrikaanse Nasionale Padagentskap Beperk The South African National Roads Agency Limited	Die figuur getoon The figure shown	 steldie padreserwe voor van 'n gedeelte represents the road reserve of a portion van Nasionale Roete N10 Seksie 6 of National Route	Vel Sheet 9 van 13 of
			Plan P676/08



<p>Die Suid Afrikaanse Nasionale Padagentskap Beperk The South African National Roads Agency Limited</p>	<p>Die figuur getoon The figure shown</p>	<p>steldie padreserwe voor van 'n gedeelte represents the road reserve of a portion van Nasionale Roete N10 Seksie Section 6</p>	<p>Vel Sheet 10 van of 13</p>
			<p>Plan P676/08</p>

PADRESERWE KOÖRDINATE / ROAD RESERVE CO-ORDINATES									
LINKERKANT/LEFT HAND SIDE					REGTERKANT/RIGHT HAND SIDE				
	Y	X	WG 25°		Y	X			
L1	54	501.020	3 439	288.520	R1	54	462.240	3 439	238.660
L2	58	471.450	3 435	877.260	R2	55	707.080	3 438	168.410
L3	58	488.560	3 435	828.260	R3	58	439.850	3 435	820.520
L4	58	541.550	3 435	776.340	R3X	58	448.900	3 435	812.470
L5	58	585.490	3 435	729.910	R4	58	464.320	3 435	798.800
L6	58	641.090	3 435	665.350	R5	58	470.430	3 435	792.810
L7	60	591.890	3 433	264.980	R6	58	517.220	3 435	747.020
L8	60	857.750	3 432	937.860	R7	58	557.710	3 435	704.280
L9	61	830.720	3 431	740.460	R8	58	600.750	3 435	654.440
L10	62	432.970	3 430	999.420	R9	58	751.010	3 435	470.160
L11	64	934.070	3 427	923.460	R10	59	173.220	3 434	950.700
L12	65	842.980	3 426	804.860	R11	60	586.890	3 433	211.150
L13	65	874.480	3 426	765.750	R12	60	826.910	3 432	915.790
L14	65	914.200	3 426	715.190	R13	61	809.350	3 431	706.450
L15	65	950.590	3 426	667.570	R14	62	860.180	3 430	413.980
L16	66	669.580	3 425	711.050	R15	63	358.750	3 429	801.320
L17	66	724.090	3 425	638.530	R16	63	884.110	3 429	154.420
L18	68	179.000	3 423	702.960	R17	65	814.070	3 426	781.000
L19	68	239.300	3 423	625.470	R18	65	844.960	3 426	742.310
L20	68	278.510	3 423	577.890	R19	65	884.330	3 426	692.070
L21	68	359.390	3 423	483.460	R20	65	920.410	3 426	644.770
L22	68	476.540	3 423	360.880	R21	66	666.020	3 425	652.840
L23	68	718.510	3 423	139.240	R22	66	680.720	3 425	633.290
L24	72	433.200	3 419	729.600	R23	68	147.680	3 423	681.720
L25	72	792.290	3 419	400.060	R24	68	171.260	3 423	650.970
L26	72	860.740	3 419	332.490	R25	68	211.400	3 423	600.080
L27	72	960.050	3 419	217.250	R26	68	249.280	3 423	553.980
L28	73	001.500	3 419	161.860	R27	68	288.730	3 423	507.890
L29	73	286.330	3 418	765.440	R28	68	330.040	3 423	461.530
L30	73	481.050	3 418	494.360	R29	68	435.110	3 423	351.670
L31	74	429.880	3 417	173.440	R30	68	456.950	3 423	326.250
L32	75	039.660	3 416	323.080	R31	68	478.640	3 423	306.090
L33	76	005.020	3 414	977.850	R32	68	504.770	3 423	284.630
L34	76	056.210	3 414	910.780	R33	68	672.780	3 423	129.800
L35	76	113.800	3 414	843.200	R34	71	380.450	3 420	644.980
L36	76	189.460	3 414	765.630	R35	72	384.630	3 419	722.800
L37	77	109.600	3 413	928.260	R36	72	763.980	3 419	374.660
L38	78	544.810	3 412	621.840	R37	72	832.420	3 419	307.320
L39	79	104.820	3 412	112.740	R38	72	930.790	3 419	193.360
L40	79	515.940	3 411	738.770	R39	73	337.270	3 418	628.820
L41	79	915.650	3 411	374.540	R40	73	456.250	3 418	463.550
L42	81	813.650	3 409	648.150	R41	74	202.560	3 417	424.490
L43	82	951.050	3 408	611.950	R42	75	012.150	3 416	296.360
L44	84	640.420	3 407	072.840	R43	75	651.590	3 415	405.350
L45	85	327.150	3 406	447.650	R44	76	027.590	3 414	886.000
L46	85	645.450	3 406	159.710	R45	76	087.960	3 414	815.610
L47	86	062.150	3 405	780.290	R46	76	242.050	3 414	667.030
L48	86	320.260	3 405	544.900	R47	77	005.490	3 413	971.870
L49	86	457.730	3 405	427.890	R48	77	075.790	3 413	907.850
L50	86	490.100	3 405	395.380	R49	79	081.500	3 412	083.050
L51	86	527.920	3 405	349.250	R50	79	368.850	3 411	820.970

Vel	11	Van	13	P676/08
Sheet		of		

PADRESERWE KOÖRDINATE / ROAD RESERVE CO-ORDINATES						
LINKERKANT/LEFT HAND SIDE				REGTERKANT/RIGHT HAND SIDE		
	Y	X	WG 25°		Y	X
L52	86 651.990	3 405	170.650	R51	79 505.570	3 411 697.280
L53	86 734.360	3 405	053.810	R52	82 905.070	3 408 603.260
L54	86 787.470	3 404	968.970	R53	86 035.850	3 405 753.150
L55	87 228.950	3 404	321.860	R54	86 229.060	3 405 577.870
L56	87 430.070	3 403	960.730	R55	86 293.380	3 405 518.440
L57	87 576.990	3 403	812.020	R56	86 391.180	3 405 422.620
L58	87 642.270	3 403	719.880	R57	86 479.410	3 405 341.820
L59	87 723.050	3 403	615.270	R58	86 498.600	3 405 321.600
L60	88 709.440	3 402	395.290	R59	86 510.640	3 405 306.700
L61	88 853.640	3 402	217.010	R60	86 544.450	3 405 261.740
L62	89 018.700	3 401	998.550	R61	86 748.910	3 404 957.900
L63	89 082.680	3 401	904.760	R62	87 197.210	3 404 301.930
L64	90 234.470	3 400	276.190	R63	87 398.620	3 403 935.780
L65	92 012.160	3 397	765.350	R64	87 600.480	3 403 684.240
L66	92 077.180	3 397	676.670	R65	87 776.420	3 403 467.370
L67	92 171.480	3 397	559.440	R66	87 787.060	3 403 476.010
L68	92 348.310	3 397	350.330	R67	88 680.760	3 402 371.130
L69	92 351.110	3 397	349.460	R68	88 855.860	3 402 149.390
L70	92 366.950	3 397	366.090	R69	89 006.280	3 401 944.000
L71	92 979.600	3 396	640.900	R70	90 184.780	3 400 280.810
L72	93 067.040	3 396	540.090	R71	91 980.620	3 397 744.230
L73	93 226.310	3 396	409.730	R72	92 047.680	3 397 653.010
L74	93 519.950	3 396	220.460	R73	92 141.680	3 397 536.180
L75	93 534.950	3 396	215.530	R74	92 352.550	3 397 286.830
L76	93 814.400	3 396	133.090	R75	92 355.790	3 397 238.340
L77	93 841.740	3 396	258.240	R76	93 754.320	3 395 579.570
L78	93 870.660	3 396	283.460	R77	93 794.970	3 395 621.100
L79	93 865.480	3 396	234.830	R78	93 792.760	3 395 634.060
L80	93 853.200	3 396	119.640	R79	93 784.390	3 395 683.360
L80X	93 855.860	3 396	116.520	R80	93 784.200	3 395 684.490
L81	93 920.100	3 396	041.190	R81	93 788.160	3 395 745.790
L82	93 930.800	3 396	028.650	R82	93 807.480	3 395 823.050
L83	93 939.770	3 396	018.130	R83	93 810.360	3 395 835.280
L84	93 952.440	3 396	003.270	R84	93 825.040	3 395 894.470
L85	93 995.000	3 395	953.370	R85	93 893.240	3 395 878.540
L86	94 005.690	3 395	940.830	R86	93 905.550	3 395 875.670
L87	94 018.790	3 395	925.460	R87	93 930.940	3 395 869.740
L88	94 074.190	3 395	891.600	R88	93 977.770	3 395 849.280
L89	94 184.240	3 395	824.310	R89	93 989.690	3 395 844.070
L90	94 271.110	3 395	771.190	R90	94 028.510	3 395 827.110
L91	94 282.690	3 395	764.110	R91	94 060.640	3 395 809.620
L92	94 298.080	3 395	754.700	R92	94 171.710	3 395 749.130
L93	94 326.830	3 395	737.120	R93	94 259.530	3 395 701.310
L94	94 369.520	3 395	711.020	R94	94 271.220	3 395 694.940
L95	94 381.140	3 395	704.210	R95	94 317.960	3 395 669.480
L96	94 457.270	3 395	657.370	R96	94 358.540	3 395 644.700
L97	94 453.430	3 395	632.580	R97	94 370.120	3 395 637.630
L98	94 463.880	3 395	626.230	R98	94 457.000	3 395 584.580
L99	94 475.470	3 395	619.190	R99	94 468.580	3 395 577.500
L100	94 518.940	3 395	592.770	R100	94 522.560	3 395 544.540
L101	94 534.810	3 395	583.130	R100X	94 538.810	3 395 534.610

Vel	12	Van	13	P676/08
Sheet		of		



PADRESERWE KOÖRDINATE / ROAD RESERVE CO-ORDINATES									
LINKERKANT/LEFT HAND SIDE					REGTERKANT/RIGHT HAND SIDE				
	Y		X	WG 25°		X			
L102	94 562.410	3	395	566.360	R101	94 555.480	3	395	524.430
L103	94 574.010	3	395	559.310	R102	94 567.070	3	395	517.360
L104	94 617.480	3	395	532.910	R103	94 592.530	3	395	501.810
L105	94 659.840	3	395	507.160	R104	94 621.270	3	395	484.260
L106	94 664.870	3	395	530.650	R105	94 653.960	3	395	464.300
L107	94 676.470	3	395	523.570	R106	94 665.540	3	395	457.220
L108	94 748.280	3	395	479.720	R107	94 728.710	3	395	418.650
L109	94 756.410	3	395	474.710	R108	94 751.810	3	395	400.220
L110	94 780.480	3	395	457.950	R108X	94 754.620	3	395	397.970
L110X	94 784.710	3	395	457.250	R108Y	94 766.460	3	395	391.170
L111	94 799.230	3	395	448.290	R109	94 769.280	3	395	389.920
L112	94 867.660	3	395	406.320	R110	94 776.330	3	395	386.800
L113	94 879.250	3	395	399.200	R111	94 793.470	3	395	379.210
L114	94 966.060	3	395	345.950	R112	94 813.330	3	395	366.860
L115	94 979.010	3	395	338.050	R113	94 856.750	3	395	339.850
L116	95 193.080	3	395	207.270	R114	94 868.320	3	395	332.650
L117	95 233.020	3	395	182.870	R115	94 954.950	3	395	278.770
L118	95 605.480	3	394	955.320	R116	94 967.860	3	395	270.740
L119	96 227.230	3	394	575.460	R117	95 160.250	3	395	152.940
L120	96 439.640	3	394	445.690	R118	95 200.070	3	395	128.600
L121	96 508.850	3	394	403.410	R119	95 608.810	3	394	878.680
L122	97 063.030	3	394	064.840	R120	96 330.170	3	394	438.190
L123	97 053.320	3	394	042.050	R121	96 340.390	3	394	431.930
L124	97 264.930	3	393	912.920	R122	96 415.710	3	394	385.810
L125	97 377.990	3	393	832.140	R123	96 454.370	3	394	362.140
L126	97 447.460	3	393	767.680	R124	96 534.620	3	394	313.000
L127	97 489.480	3	393	721.660	R125	97 037.420	3	394	005.150
L128	97 767.120	3	393	395.250	R126	97 038.700	3	394	007.970
					R127	97 246.550	3	393	880.050
					R128	97 354.800	3	393	802.330
					R129	97 420.420	3	393	741.310
					R130	97 463.050	3	393	694.560
					R131	97 738.050	3	393	370.520

Vel Sheet	13	Van of	13	P676/08
--------------	----	-----------	----	---------