

Government Gazette Staatskoerant

REPUBLIC OF SOUTH AFRICA
REPUBLIEK VAN SUID-AFRIKA

Vol. 545

Pretoria, 12 November 2010

No. 33708

IMPORTANT NOTICE

The Government Printing Works will not be held responsible for faxed documents not received due to errors on the fax machine or faxes received which are unclear or incomplete. Please be advised that an "OK" slip, received from a fax machine, will not be accepted as proof that documents were received by the GPW for printing. If documents are faxed to the GPW it will be the sender's responsibility to phone and confirm that the documents were received in good order.

Furthermore the Government Printing Works will also not be held responsible for cancellations and amendments which have not been done on original documents received from clients.

CONTENTS**INHOUD**

<i>No.</i>	<i>Page No.</i>	<i>Gazette No.</i>	<i>No.</i>	<i>Bladsy No.</i>	<i>Koerant No.</i>
GOVERNMENT NOTICE			GOEWERMENSKENNISGEWING		
Transport, Department of			Vervoer, Departement van		
<i>Government Notice</i>			<i>Goewermenskennisgewing</i>		
996			996		
South African National Roads Agency Limited and the National Roads Act (7/1998): The South African National Roads Agency Limited: Declaration amendment of National Road R23 Section 2: Amendment of Declaration No. 725 of 2005	3	33708	Suid-Afrikaanse Nasionale Padagentskap Beperk en die Nasionale Paaie Wet (7/1998): Die Suid-Afrikaanse Nasionale Padagentskap Beperk: Verklaring wysiging van Nasionale Pad R23 Seksie 2: Wysiging van Verklaring No. 725 van 2005	4	33708

GOVERNMENT NOTICE

DEPARTMENT OF TRANSPORT

No. 996

12 November 2010

THE SOUTH AFRICAN NATIONAL ROADS AGENCY LIMITED

Registration No: 98/09584/06

DECLARATION AMENDMENT OF NATIONAL ROAD R23 SECTION 2

AMENDMENT OF DECLARATION No. 725 OF 2005

By virtue of section 40(1)(b) of the South African National Roads Agency Limited and the National Roads Act, 1998 (Act No. 7 of 1998), I hereby amend Declaration No. 725 of 2005, by substituting Annexure paragraphs (I), (II) and (III), with the subjoined sheets 1 to 20 of Plan No. P753/09.

(National Road R23 Section 2: Standerton – Mpumalanga/Gauteng Provincial Border)


(Acting Minister)
MINISTER OF TRANSPORT

GOEWERMENTSKENNISGEWING

DEPARTEMENT VAN VERVOER

No. 996

12 November 2010

DIE SUID-AFRIKAANSE NASIONALE PADAGENTSKAP BEPERK

Registrasie No: 98/09584/06

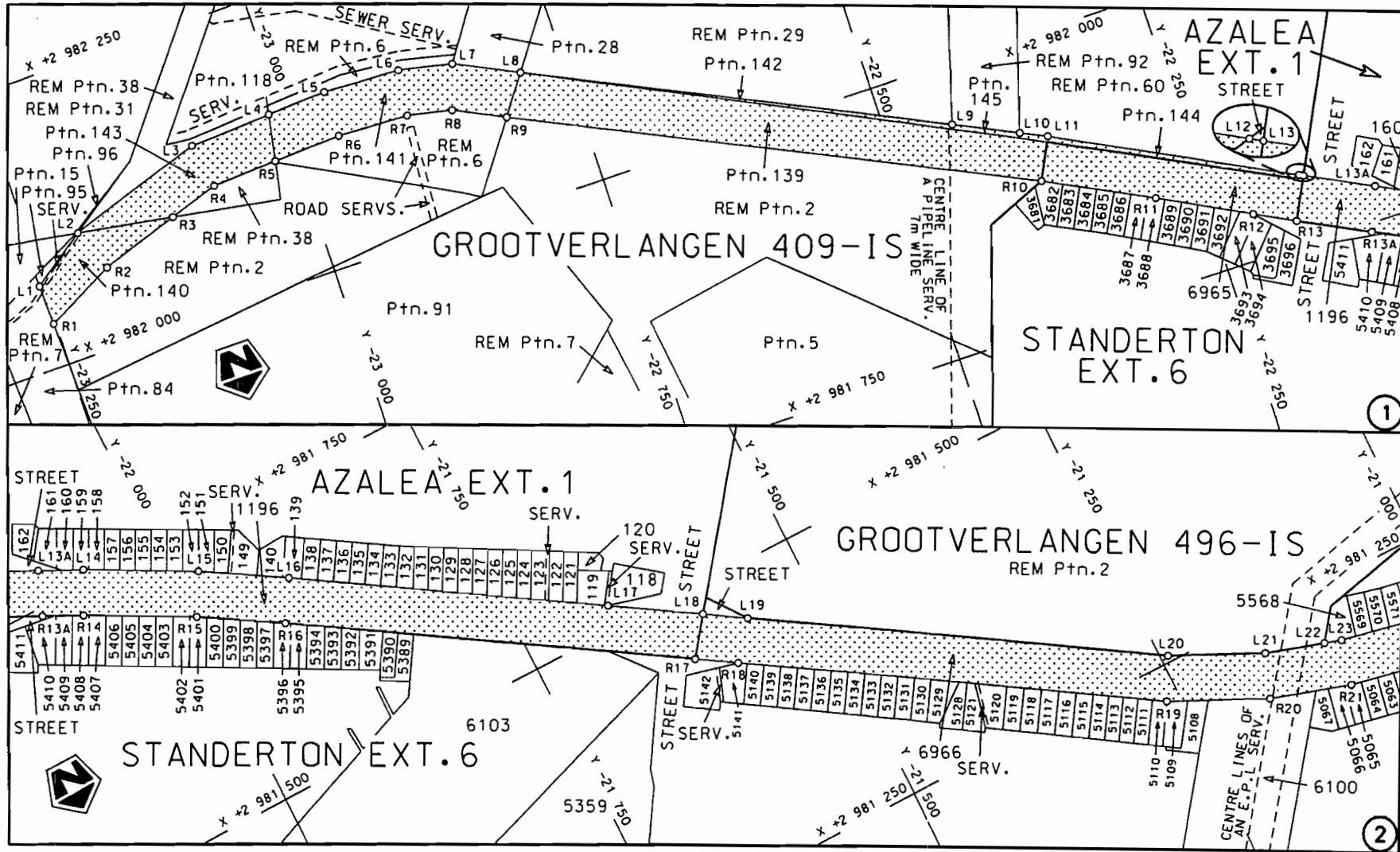
VERKLARING WYSIGING VAN NASIONALE PAD R23 SEKSIE 2.


WYSIGING VAN VERKLARING NO. 725 VAN 2005

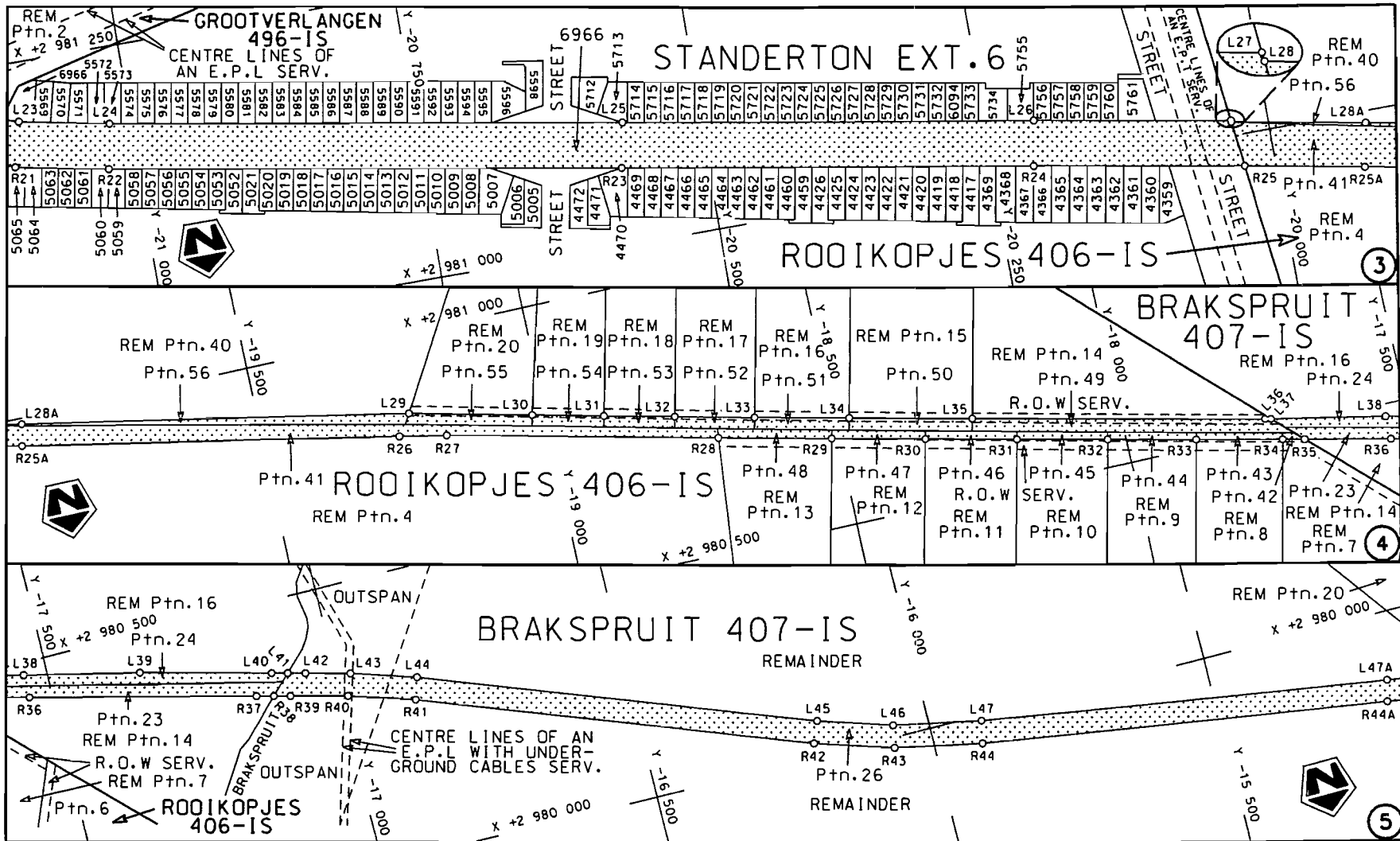
Kragtens Artikel 40(1)(b) van die Suid-Afrikaanse Nasionale Padagentskap Beperk en die Nasionale Paaie Wet, 1998 (Wet no. 7 van 1998), wysig ek hiermee Verklaring no. 725 van 2005, deur Bylae paragrawe (I), (II) en (III), te vervang met meegaande velle 1 tot 20 van Plan no. P753/09.

(Nasionale Pad R23 Seksie 2: Standerton – Mpumalanga/Gauteng Provinsiale Grens)

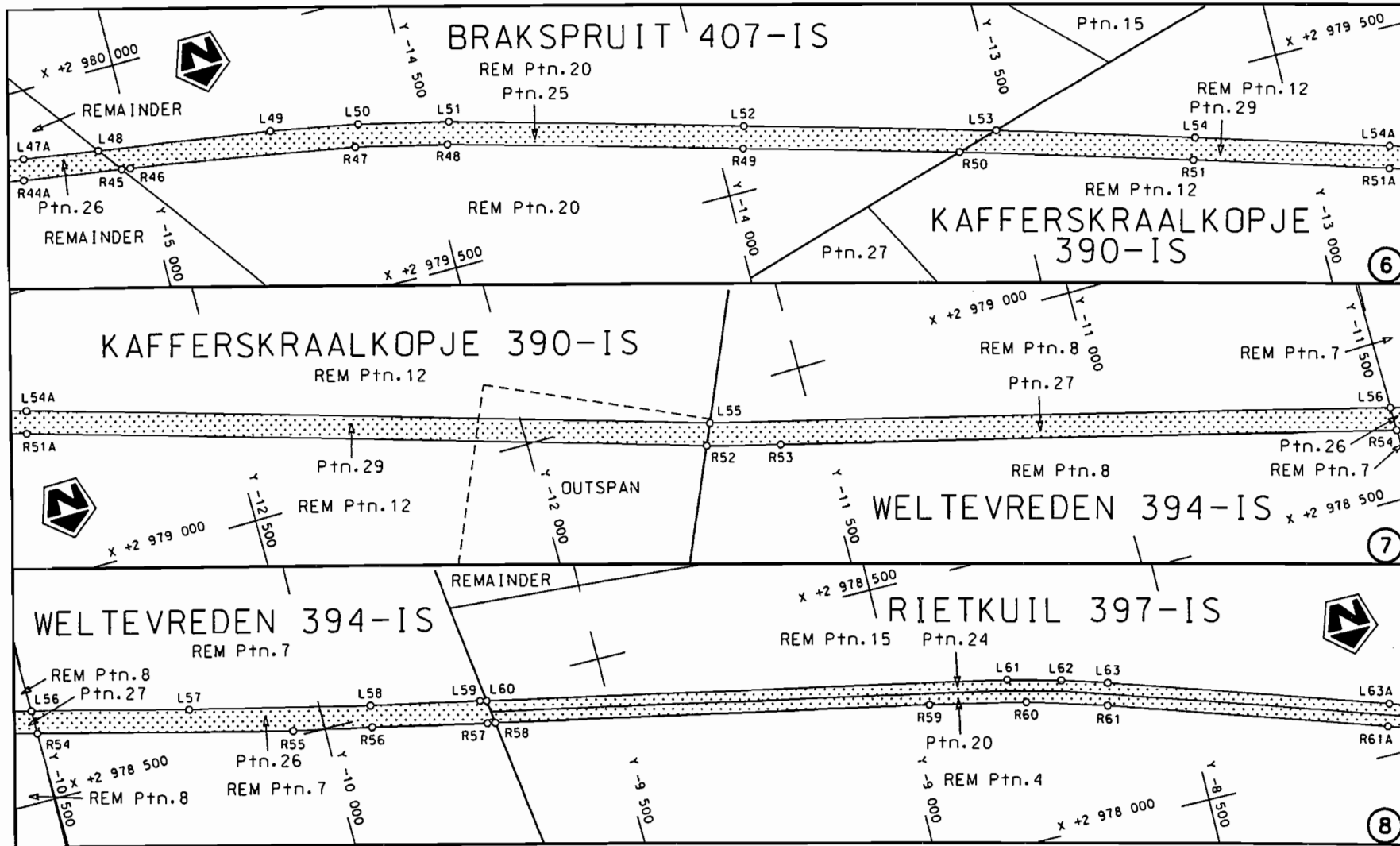

MINISTER VAN VERVOER



Die Suid Afrikaanse Nasionale Podagentskap Beperk The South African National Roads Agency Limited	Die figuur getoon The figure shown	 steldie padreserwe voor van 'n gedeelte represents the road reserve of a portion van Nasionale Roete R23 Seksie of National Route R23 Section 2	Vel Sheet 1 van of 20
			Plan P753/09

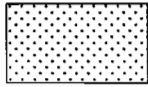


<p>Die Suid Afrikaanse Nasionale Padagentskap Beperk The South African National Roads Agency Limited</p>	<p>Die figuur getoon The figure shown</p>	<p>steldie padreserwe voor van 'n gedeelte represents the road reserve of a portion van Nasionale Roete of National Route</p> <p>R23 Seksie Section</p>	<p>Vel Sheet</p> <p>2 van of 20</p> <p>Plan P753/09</p>
--	---	---	---



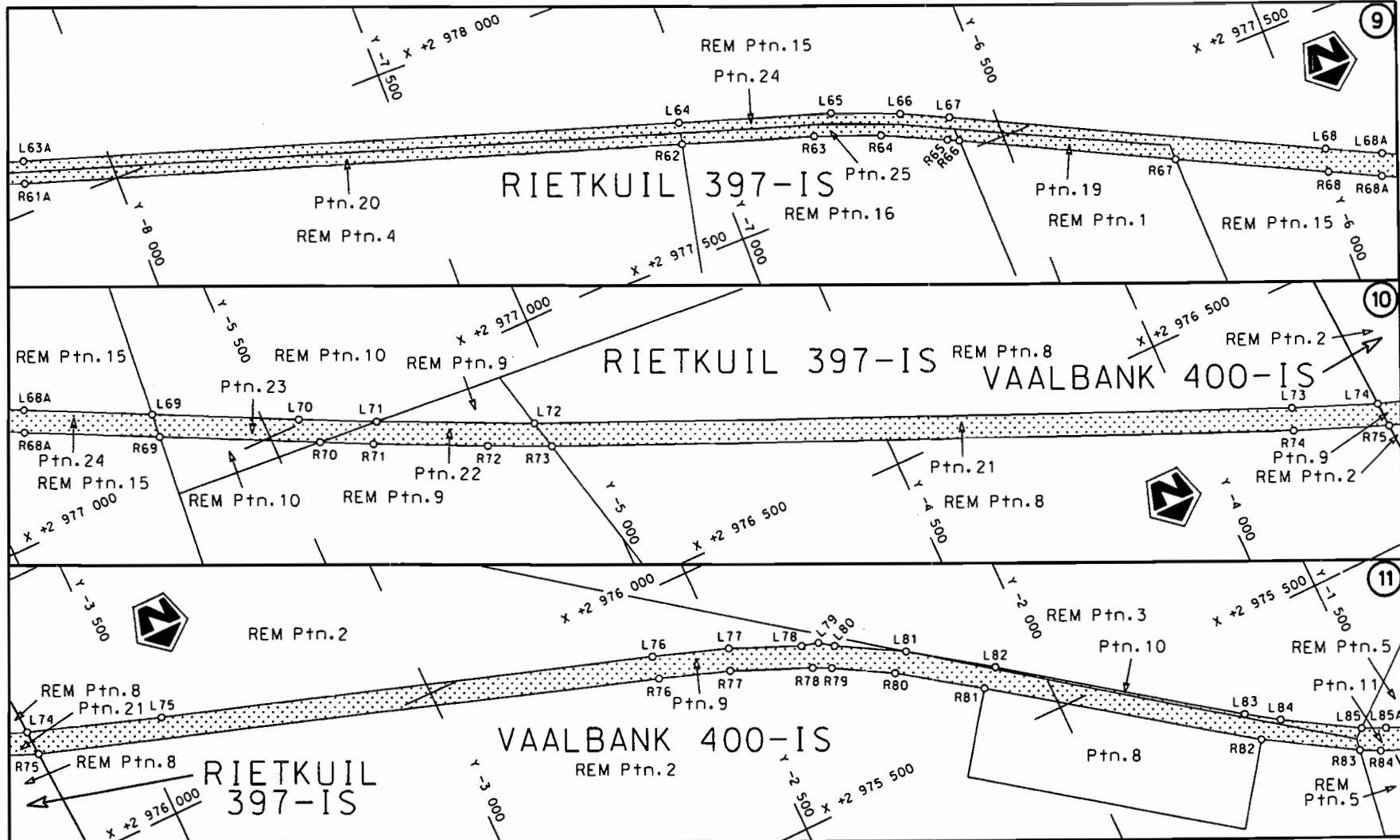
Die Suid Afrikaanse Nasionale Padagentskap Beperk
The South African National Roads Agency Limited


Die figuur getoon
The figure shown

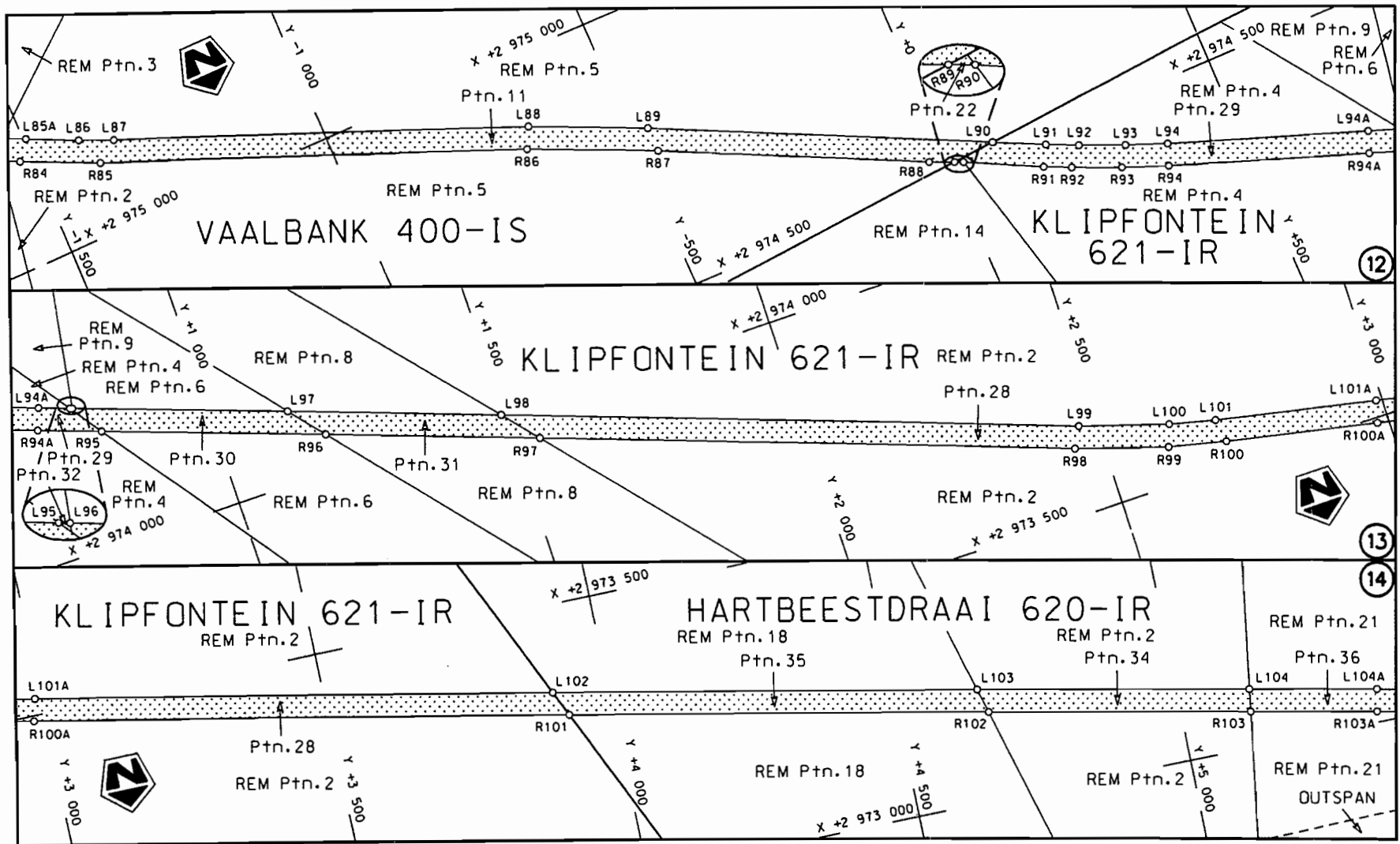


steldie padreserwe voor van 'n gedeelte
represents the road reserve of a portion
van Nasionale Roete R23 Seksie Section
of National Route R23 Section

Vel Sheet 3 van 20
Plan P753/09



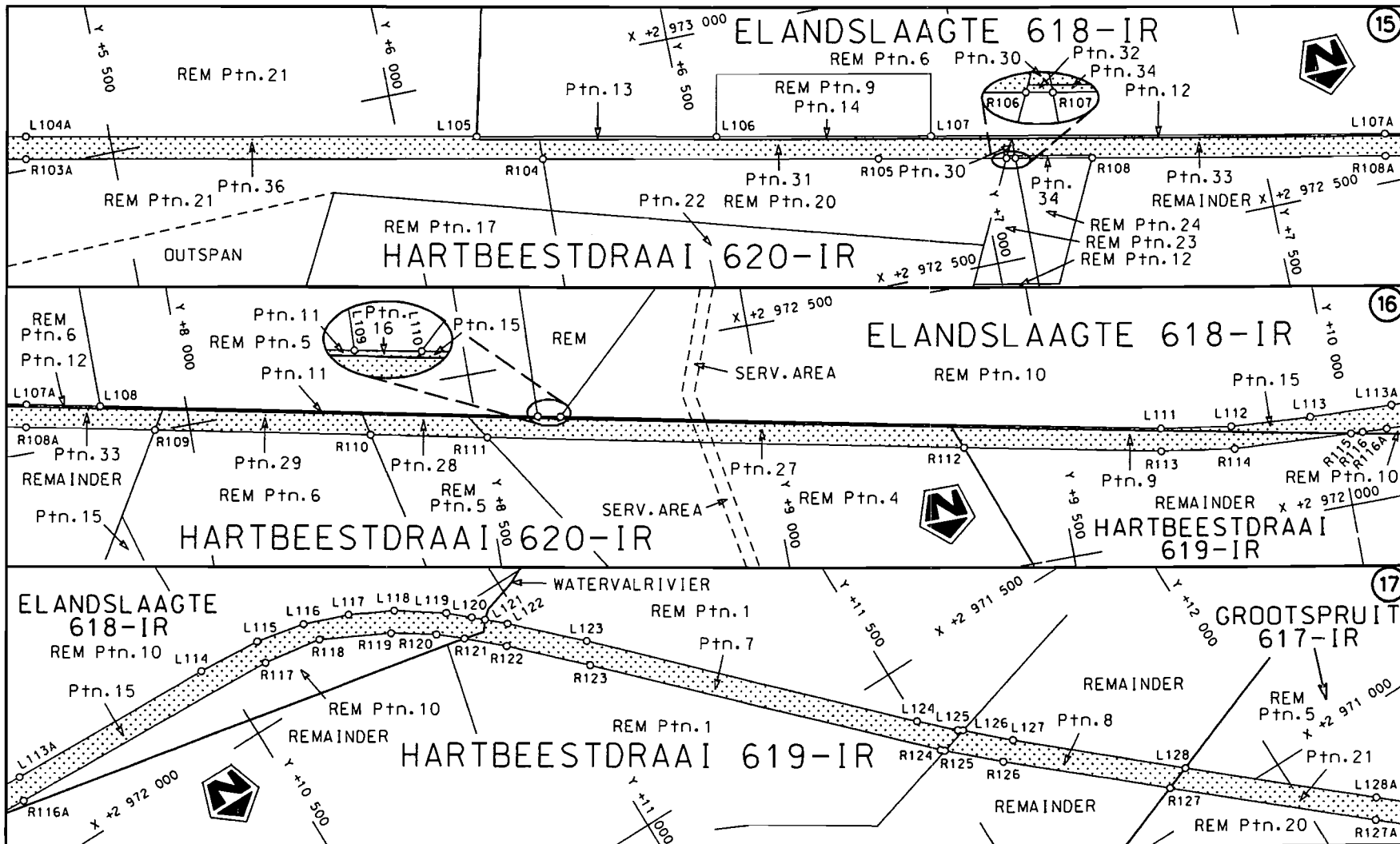
<p>Die Suid Afrikaanse Nasionale Padagentskap Beperk The South African National Roads Agency Limited</p>	<p>Die figuur getoon The figure shown</p>	 <p>steldie padreserwe voor van 'n gedeelte represents the road reserve of a portion van Nasionale Roete R23 Seksie of National Route R23 Section</p>	<p>Vel Sheet 4 van of 20 Plan P753/09</p>
			<p>2</p>



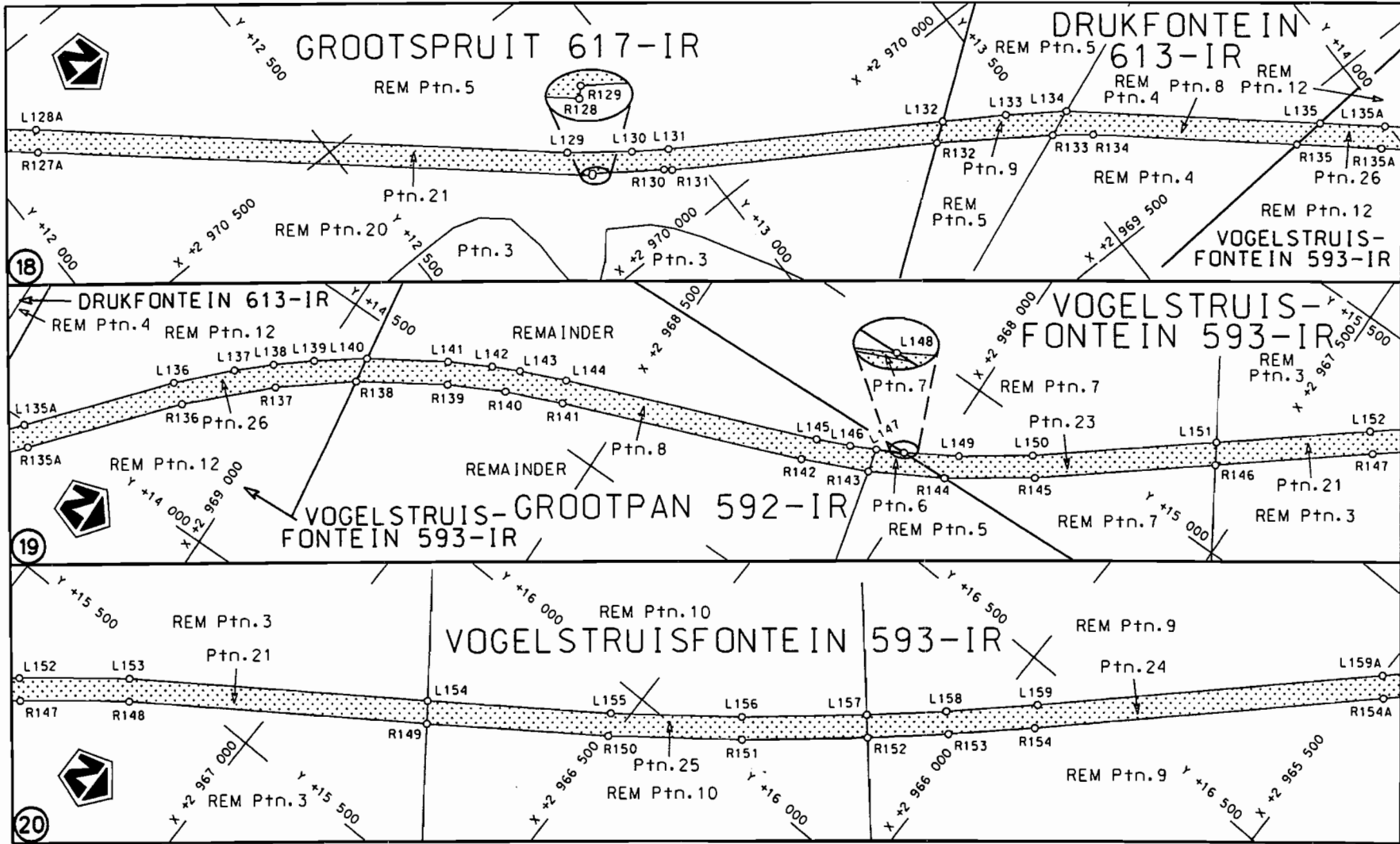
STAATSKOERANT, 12 NOVEMBER 2010

No. 33708 9

<p>Die Suid Afrikaanse Nasionale Padagentskap Beperk The South African National Roads Agency Limited</p>	<p>Die figuur getoon The figure shown</p> <div style="border: 1px solid black; width: 50px; height: 30px; background-color: #e0e0e0; margin: 5px 0;"></div>	<p>steldie padreserwe voor van 'n gedeelte represents the road reserve of a portion van Nasionale Roete R23 Seksie of National Route 2</p>	<p>Vel Sheet 5 van of 20</p> <p>Plan P753/09</p>
--	---	--	--

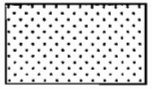


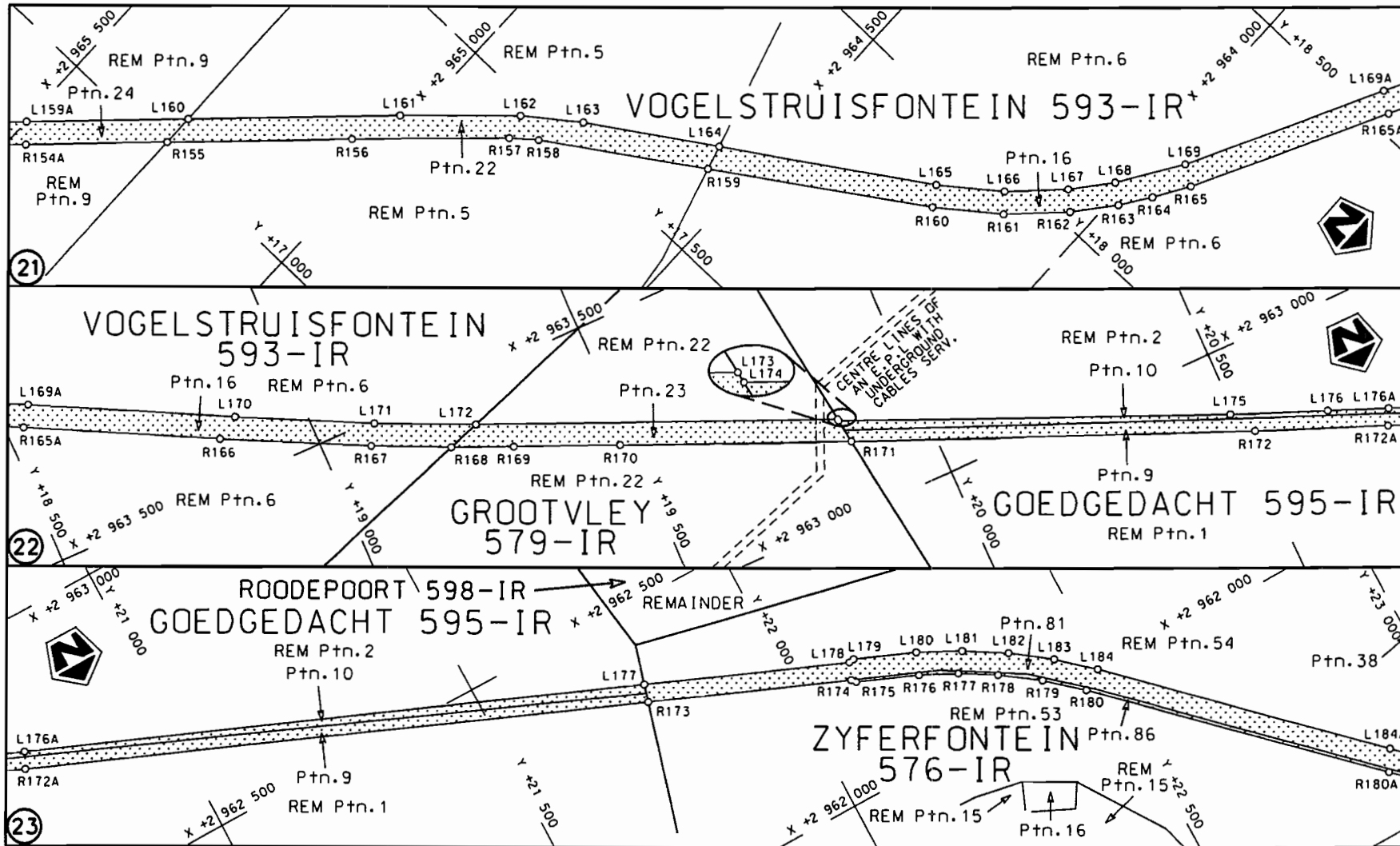
<p>Die Suid Afrikaanse Nasionale Padagentskop Beperk The South African National Roads Agency Limited</p>	<p>Die figuur getoon The figure shown</p>		<p>steldie padreserwe voor van 'n gedeelte represents the road reserve of a portion van Nasionale Raete R23 Seksie of National Route R23 Section</p>	<p>Vel Sheet 6 van 20 Plan P753/09</p>
			<p>2</p>	

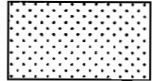


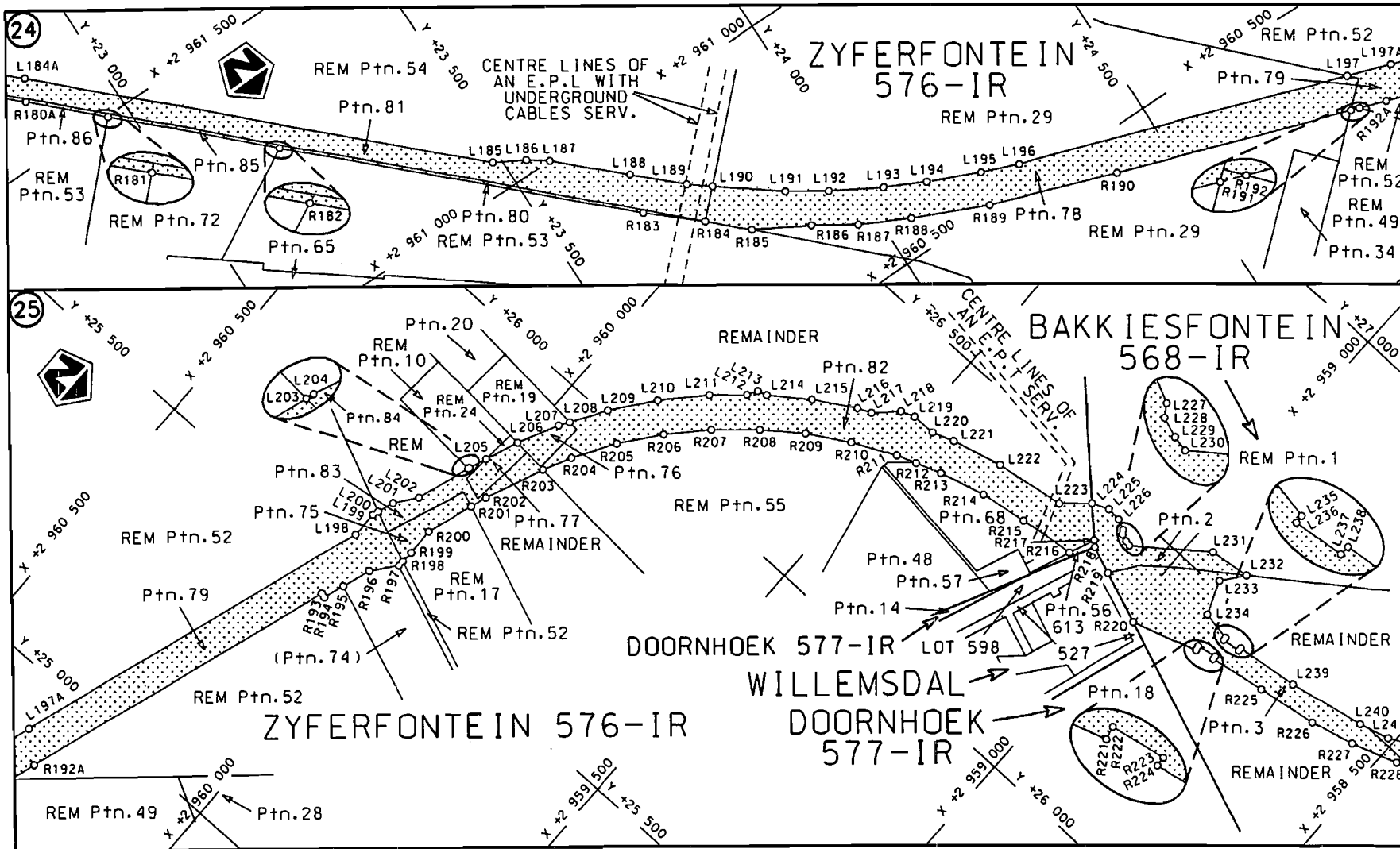
STAATSKOERANT, 12 NOVEMBER 2010

No. 33708 11

Die Suid Afrikaanse Nasionale Padagentskap Beperk The South African National Roads Agency Limited	Die figuur getoon The figure shown		steldie padreserwe voor van 'n gedeelte represents the road reserve of a portion van Nasionale Roete R23 Seksie 2 of National Route R23 Section 2	Vel 7 van 20 Sheet 7 of 20 Plan P753/09
--	---------------------------------------	--	--	---

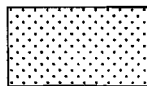


<p>Die Suid Afrikaanse Nasionale Padagentskap Beperk The South African National Roads Agency Limited</p>	<p>Die figuur getoon The figure shown</p> 	<p>steldie padreserwe voor van 'n gedeelte represents the road reserve of a portion van Nasionale Roete R23 of National Route</p> <p>Seksie 2</p>	<p>Vel Sheet 8 van 20 Plan P753/09</p>
--	--	---	--



Die Suid Afrikaanse Nasionale Padagentskap Beperk
The South African National Roads Agency Limited

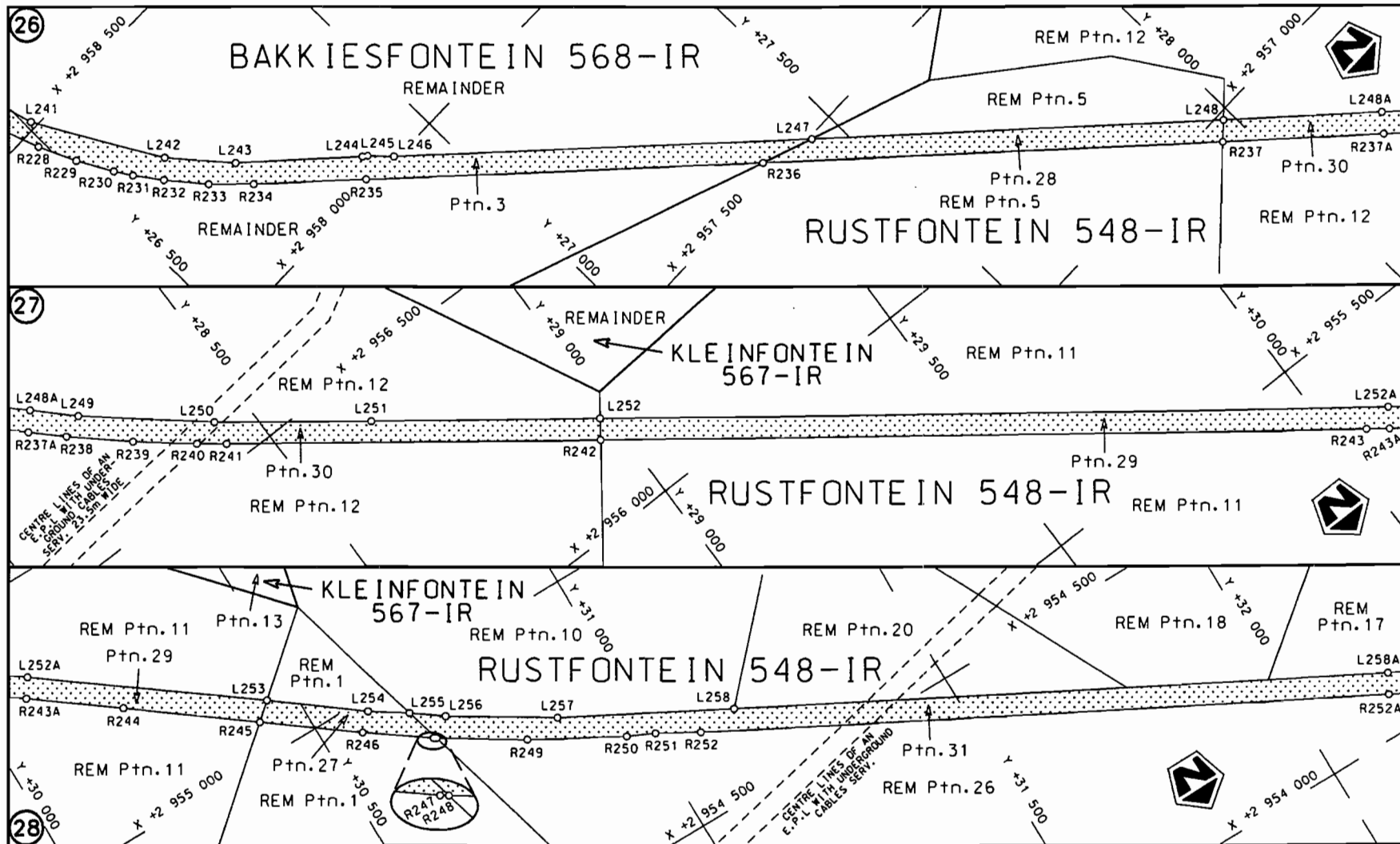
Die figuur getoon
The figure shown




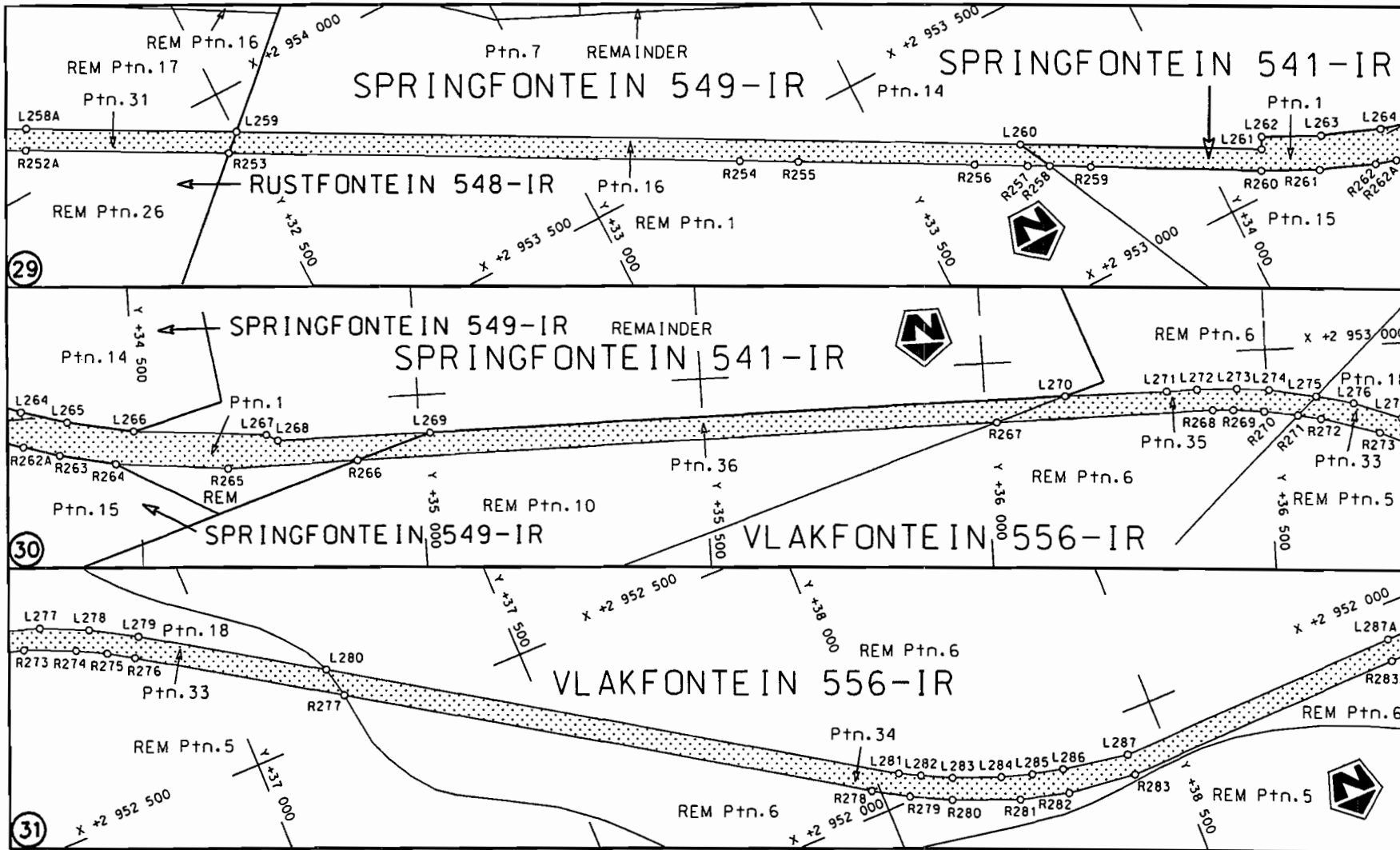
steldie padreserwe voor van 'n gedeelte
represents the road reserve of a portion
von Nasionale Roete R23
of National Route R23
Seksie
Section

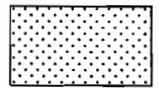
2

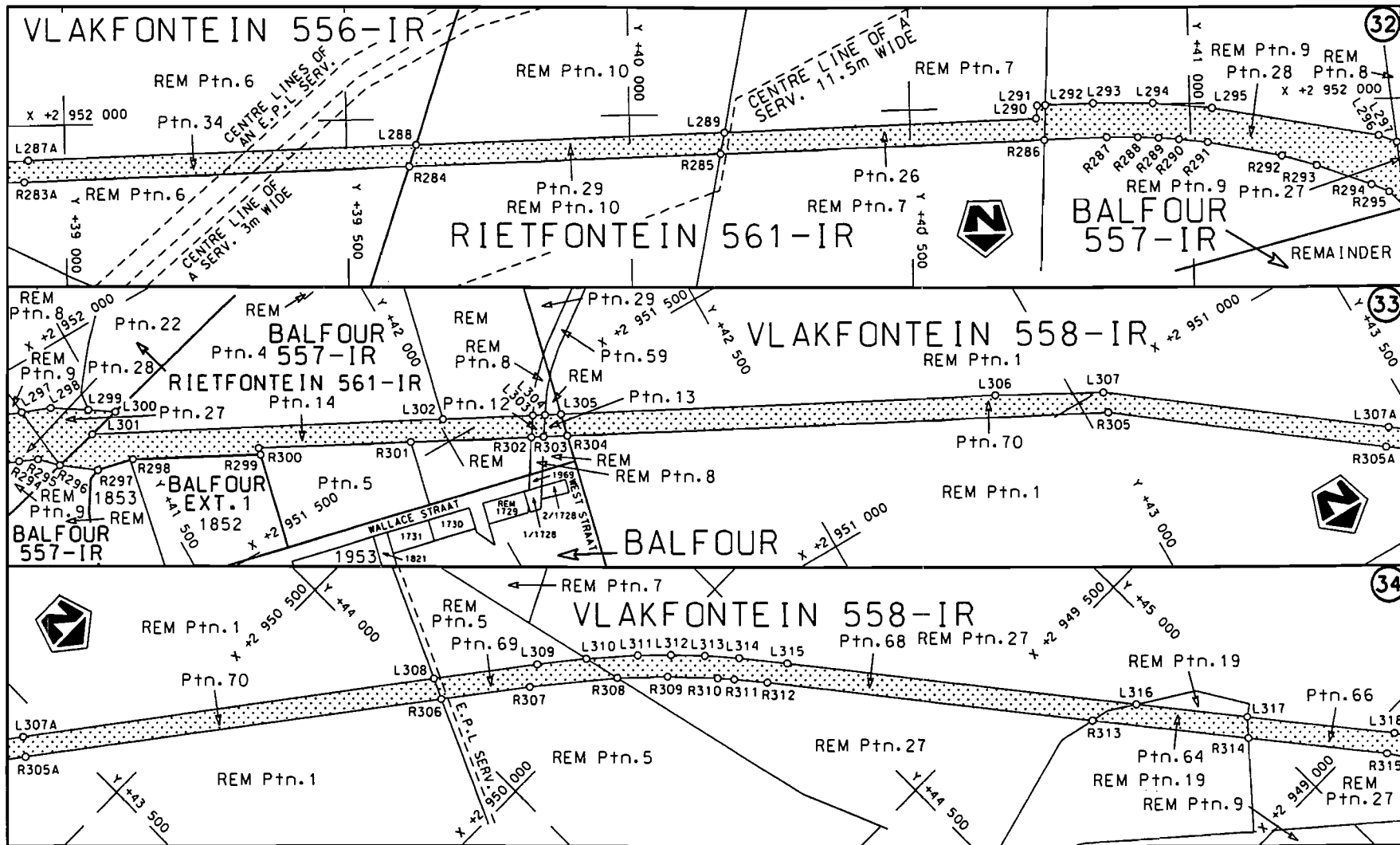
Vel
Sheet 9 van
of 20
Plan P753/09

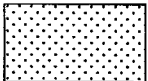


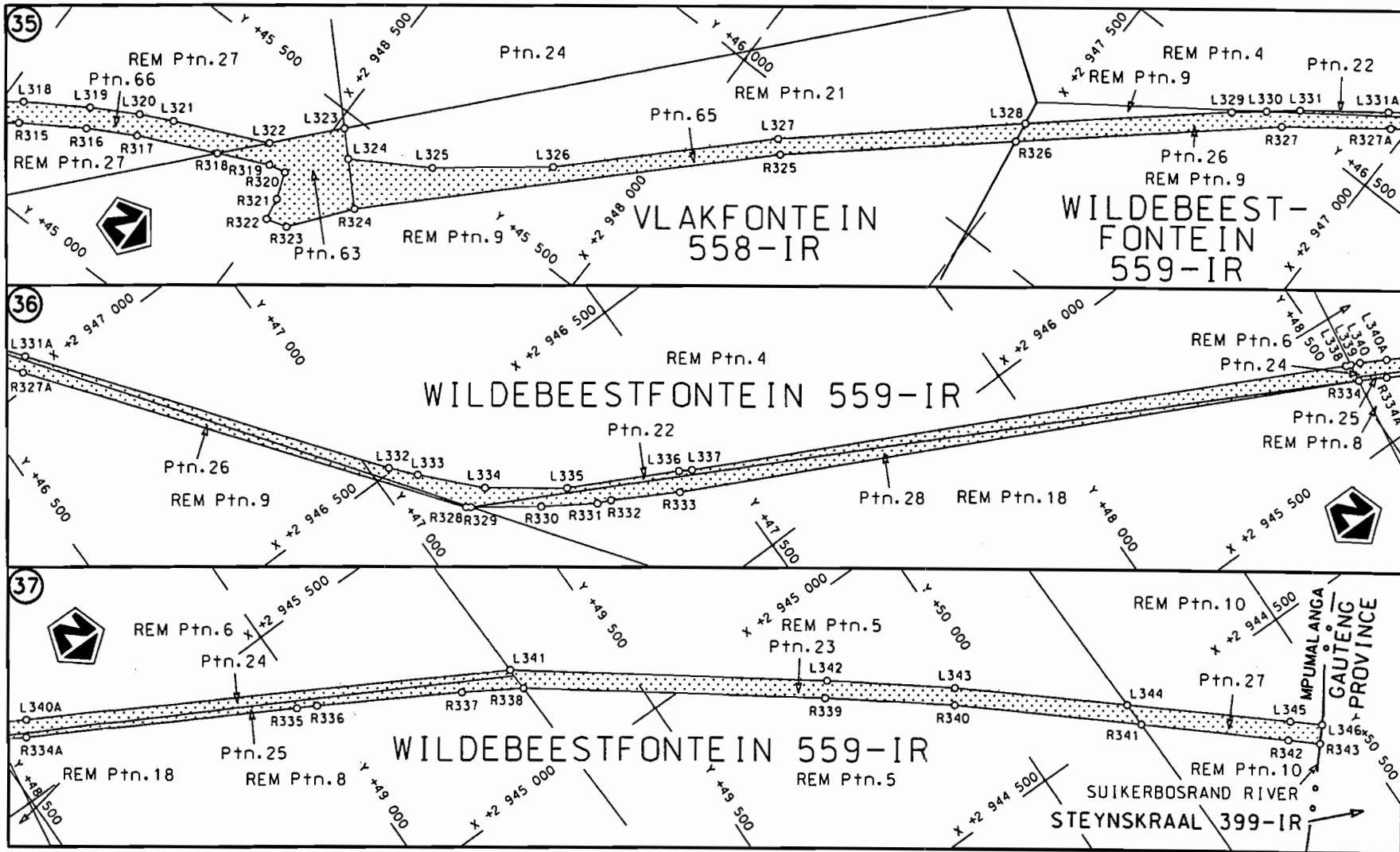
<p>Die Suid Afrikaanse Nasionale Padagentskap Beperk The South African National Roads Agency Limited</p>	<p>Die figuur getoon The figure shown</p> 	<p>steldie padreserwe voor van 'n gedeelte represents the road reserve of a portion von Nasionale Roete R23 of National Route R23</p> <p>Seksie Section</p> <p>2</p>	<p>Vel Sheet</p> <p>10 of 20</p> <p>Plan P753/09</p>
--	--	--	--

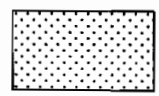


<p>Die Suid Afrikaanse Nasionale Padagentskap Beperk The South African National Roads Agency Limited</p>	<p>Die figuur getoon The figure shown</p>		<p>steldie padreserwe voor van 'n gedeelte represents the road reserve of a portion van Nasionale Roete R23 Seksie of National Route R23 Section 2</p>	<p>Vel Sheet 11 van 20 Plan P753/09</p>
--	---	--	--	---



<p>Die Suid Afrikaanse Nasionale Padagentskap Beperk The South African National Roads Agency Limited</p>	<p>Die figuur getoon The figure shown</p> 	<p>steldie podreserwe voor van 'n gedeelte represents the road reserve of a portion van Nasionale Roete R23 Sektie of Notional Route Section</p>	<p>Vel Sheet 12 van of 20 Plan P753/09</p>
--	--	--	--



<p>Die Suid Afrikaanse Nasionale Padagentskop Beperk The South African National Roads Agency Limited</p>	<p>Die figuur getoon The figure shown</p> 	<p>steldie padreserwe voor van 'n gedeelte represents the road reserve of a portion van Nasionale Roete of National Route</p> <p>R23</p> <p>Seksie Section</p> <p>2</p>	<p>Vel Sheet</p> <p>13 of 20</p> <p>Plan P753/09</p>
--	--	---	--

PADRESERWE KOÖRDINATE				ROAD RESERVE CO-ORDINATES			
LINKERKANT/LEFT HAND SIDE				REGTERKANT/RIGHT HAND SIDE			
	Y	X	WG 29°		Y	X	
L1	-23 253.630	2 982	072.850	R1	-23 252.030	2 982	037.750
L2	-23 205.550	2 982	105.970	R2	-23 190.700	2 982	068.740
L3	-23 084.540	2 982	145.400	R3	-23 120.770	2 982	091.530
L4	-23 011.080	2 982	149.040	R4	-23 077.230	2 982	105.720
L5	-22 958.290	2 982	151.650	R5	-23 018.660	2 982	108.610
L6	-22 890.170	2 982	148.360	R6	-22 958.270	2 982	111.600
L7	-22 843.110	2 982	138.270	R7	-22 895.360	2 982	108.560
L8	-22 789.060	2 982	112.030	R8	-22 856.220	2 982	100.170
L9	-22 440.760	2 981	947.300	R9	-22 812.980	2 982	079.180
L10	-22 386.850	2 981	921.810	R10	-22 382.290	2 981	875.410
L11	-22 364.420	2 981	911.200	R11	-22 291.180	2 981	829.900
L12	-22 164.890	2 981	809.870	R12	-22 213.230	2 981	789.780
L13	-22 161.160	2 981	807.970	R13	-22 179.030	2 981	772.190
L14	-22 067.440	2 981	761.690	R14	-22 085.760	2 981	726.130
L15	-21 976.740	2 981	713.140	R15	-21 996.630	2 981	678.460
L16	-21 907.600	2 981	670.830	R16	-21 928.880	2 981	637.010
L17	-21 668.450	2 981	520.730	R17	-21 620.770	2 981	443.580
L18	-21 596.230	2 981	475.540	R18	-21 588.000	2 981	423.200
L19	-21 562.330	2 981	454.330	R19	-21 262.380	2 981	220.380
L20	-21 243.270	2 981	255.600	R20	-21 178.530	2 981	181.280
L21	-21 164.180	2 981	218.700	R21	-21 108.430	2 981	159.850
L22	-21 113.490	2 981	203.230	R22	-21 026.030	2 981	143.830
L23	-21 098.740	2 981	198.710	R23	-20 576.920	2 981	067.330
L24	-21 018.850	2 981	183.180	R24	-20 212.890	2 981	005.350
L25	-20 569.720	2 981	106.680	R25	-20 027.920	2 980	971.940
L26	-20 205.970	2 981	044.750	R26	-19 260.500	2 980	824.800
L27	-20 032.990	2 981	013.500	R27	-19 177.730	2 980	808.640
L28	-20 032.830	2 981	012.170	R28	-18 708.700	2 980	702.350
L29	-19 235.490	2 980	860.640	R29	-18 511.030	2 980	657.560
L30	-19 022.500	2 980	811.390	R30	-18 348.280	2 980	620.680
L31	-18 899.760	2 980	783.020	R31	-18 188.610	2 980	584.500
L32	-18 776.950	2 980	755.150	R32	-18 031.990	2 980	549.020
L33	-18 637.550	2 980	723.510	R33	-17 878.450	2 980	514.230
L34	-18 472.670	2 980	686.080	R34	-17 728.560	2 980	480.260
L35	-18 258.960	2 980	637.570	R35	-17 690.220	2 980	471.580
L36	-17 751.070	2 980	522.280	R36	-17 541.100	2 980	437.790
L37	-17 740.740	2 980	520.130	R37	-17 145.890	2 980	341.760
L38	-17 541.300	2 980	478.510	R38	-17 116.038	2 980	334.506
L39	-17 337.700	2 980	432.320	R39	-17 087.580	2 980	327.590
L40	-17 110.110	2 980	374.980	R40	-16 987.440	2 980	303.260
L41	-17 082.307	2 980	367.974	R41	-16 872.940	2 980	268.140
L42	-17 051.930	2 980	360.320	R42	-16 206.200	2 980	024.320
L43	-16 973.750	2 980	340.620	R43	-16 069.090	2 979	982.300
L44	-16 861.070	2 980	306.050	R44	-15 915.610	2 979	951.830
L45	-16 191.310	2 980	061.170	R45	-15 030.650	2 979	819.110
L46	-16 062.270	2 980	021.210	R46	-15 015.490	2 979	816.840
L47	-15 907.730	2 979	990.810	R47	-14 618.910	2 979	750.320
L48	-15 062.650	2 979	861.820	R48	-14 459.030	2 979	713.160
L49	-14 755.610	2 979	814.950	R49	-13 954.900	2 979	574.790
L50	-14 603.580	2 979	787.700	R50	-13 584.680	2 979	472.400
L51	-14 446.680	2 979	751.110	R51	-13 186.280	2 979	357.110

Vel	14	Van	20	P753/09
Sheet		of		

PADRESERWE KOÖRDINATE				/	ROAD RESERVE CO-ORDINATES			
LINKERKANT/LEFT HAND SIDE					REGTERKANT/RIGHT HAND SIDE			
	Y	X	WG	29°	Y	X		
L52	-13 943.670	2 979 613.010		R52	-11 694.320	2 978 912.870		
L53	-13 511.770	2 979 493.680		R53	-11 565.800	2 978 880.010		
L54	-13 173.730	2 979 394.890		R54	-10 499.900	2 978 618.780		
L55	-11 678.000	2 978 949.850		R55	-10 054.420	2 978 509.610		
L56	-10 500.600	2 978 660.080		R56	-9 919.180	2 978 481.970		
L57	-10 226.970	2 978 592.740		R57	-9 718.390	2 978 438.500		
L58	-9 912.600	2 978 519.210		R58	-9 704.490	2 978 435.640		
L59	-9 721.320	2 978 479.550		R59	-8 945.580	2 978 279.600		
L60	-9 709.960	2 978 476.570		R60	-8 776.250	2 978 242.590		
L61	-8 800.280	2 978 288.920		R61	-8 635.700	2 978 201.870		
L62	-8 705.830	2 978 264.550		R62	-7 039.950	2 977 694.260		
L63	-8 625.820	2 978 240.570		R63	-6 815.700	2 977 622.940		
L64	-7 031.590	2 977 731.670		R64	-6 702.050	2 977 580.520		
L65	-6 772.580	2 977 649.320		R65	-6 594.770	2 977 530.330		
L66	-6 656.640	2 977 603.220		R66	-6 575.870	2 977 521.050		
L67	-6 577.110	2 977 565.760		R67	-6 226.850	2 977 349.650		
L68	-5 972.150	2 977 268.960		R68	-5 982.030	2 977 229.440		
L69	-5 674.900	2 977 123.080		R69	-5 678.750	2 977 081.160		
L70	-5 440.190	2 977 007.880		R70	-5 421.780	2 976 955.530		
L71	-5 314.130	2 976 947.270		R71	-5 335.310	2 976 913.260		
L72	-5 060.860	2 976 830.680		R72	-5 153.270	2 976 828.240		
L73	-3 821.710	2 976 300.140		R73	-5 048.600	2 976 780.870		
L74	-3 679.060	2 976 242.190		R74	-3 835.480	2 976 262.570		
L75	-3 451.040	2 976 164.400		R75	-3 676.410	2 976 198.670		
L76	-2 614.950	2 975 890.950		R76	-2 621.050	2 975 851.110		
L77	-2 487.320	2 975 847.040		R77	-2 501.970	2 975 810.380		
L78	-2 369.170	2 975 795.960		R78	-2 367.510	2 975 752.660		
L79	-2 339.310	2 975 787.840		R79	-2 336.360	2 975 737.340		
L80	-2 315.370	2 975 770.380		R80	-2 237.740	2 975 680.890		
L81	-2 203.990	2 975 706.760		R81	-2 107.180	2 975 588.790		
L82	-2 073.400	2 975 614.270		R82	-1 702.540	2 975 295.090		
L83	-1 709.820	2 975 348.380		R83	-1 554.310	2 975 202.980		
L84	-1 657.510	2 975 311.960		R84	-1 520.940	2 975 185.710		
L85	-1 534.180	2 975 236.420		R85	-1 388.090	2 975 124.410		
L86	-1 407.710	2 975 177.160		R86	-680.370	2 974 839.500		
L87	-1 349.700	2 975 151.900		R87	-466.670	2 974 743.380		
L88	-661.990	2 974 875.070		R88	-29.940	2 974 532.900		
L89	-467.190	2 974 787.390		R89	11.430	2 974 514.910		
L90	87.520	2 974 520.490		R90	25.930	2 974 508.610		
L91	172.930	2 974 479.400		R91	153.650	2 974 444.530		
L92	227.140	2 974 454.720		R92	199.610	2 974 423.520		
L93	303.820	2 974 422.310		R93	282.410	2 974 388.020		
L94	375.350	2 974 394.680		R94	361.640	2 974 357.450		
L95	765.400	2 974 256.020		R95	807.580	2 974 199.010		
L96	769.890	2 974 254.430		R96	1 186.790	2 974 064.510		
L97	1 135.330	2 974 124.800		R97	1 546.060	2 973 937.080		
L98	1 493.270	2 973 997.840		R98	2 449.910	2 973 616.530		
L99	2 468.850	2 973 651.800		R99	2 611.780	2 973 566.390		
L100	2 625.350	2 973 604.200		R100	2 712.990	2 973 543.910		
L101	2 706.290	2 973 585.500		R101	3 921.160	2 973 302.830		
L102	3 900.310	2 973 347.340		R102	4 660.010	2 973 155.400		

Vel	15	Van	20	P753/09
Sheet		of		

PADRESERWE KOÖRDINATE				/	ROAD RESERVE CO-ORDINATES			
LINKERKANT/LEFT HAND SIDE					REGTERKANT/RIGHT HAND SIDE			
	Y	X	WG	29°	Y	X		
L103	4 647.980	2 973 198.250		R103	5 123.150	2 973 063.010		
L104	5 128.930	2 973 102.310		R104	6 244.620	2 972 839.240		
L105	6 137.690	2 972 901.150		R105	6 827.820	2 972 722.820		
L106	6 553.900	2 972 818.120		R106	7 051.850	2 972 678.130		
L107	6 928.040	2 972 743.480		R107	7 067.550	2 972 675.000		
L108	7 848.910	2 972 559.430		R108	7 200.860	2 972 648.430		
L109	8 608.820	2 972 407.710		R109	7 938.170	2 972 501.490		
L110	8 647.990	2 972 400.360		R110	8 313.200	2 972 426.800		
L111	9 691.130	2 972 193.060		R111	8 514.630	2 972 386.690		
L112	9 815.670	2 972 173.970		R112	9 342.060	2 972 221.920		
L113	9 955.720	2 972 165.130		R113	9 684.610	2 972 153.720		
L114	10 473.100	2 972 146.020		R114	9 814.620	2 972 134.260		
L115	10 583.850	2 972 138.020		R115	10 021.170	2 972 123.290		
L116	10 669.610	2 972 120.920		R116	10 041.330	2 972 122.220		
L117	10 746.490	2 972 092.530		R117	10 576.630	2 972 098.790		
L118	10 819.250	2 972 055.780		R118	10 679.080	2 972 083.310		
L119	10 895.190	2 972 003.740		R119	10 793.260	2 972 025.010		
L120	10 928.970	2 971 973.750		R120	10 860.630	2 971 980.570		
L121	10 946.591	2 971 958.040		R121	10 898.480	2 971 948.790		
L122	10 976.560	2 971 931.320		R122	10 954.320	2 971 898.470		
L123	11 078.970	2 971 831.810		R123	11 061.750	2 971 792.540		
L124	11 500.370	2 971 403.660		R124	11 509.020	2 971 339.660		
L125	11 553.120	2 971 352.540		R125	11 514.890	2 971 334.270		
L126	11 560.900	2 971 347.200		R126	11 592.230	2 971 263.270		
L127	11 626.740	2 971 285.790		R127	11 816.400	2 971 067.670		
L128	11 858.310	2 971 082.880		R128	12 836.310	2 970 177.940		
L129	12 827.750	2 970 237.250		R129	12 839.030	2 970 180.710		
L130	12 917.620	2 970 167.830		R130	12 942.340	2 970 107.480		
L131	12 971.520	2 970 130.900		R131	12 953.220	2 970 097.860		
L132	13 383.870	2 969 865.400		R132	13 352.490	2 969 842.580		
L133	13 479.190	2 969 804.180		R133	13 522.910	2 969 725.610		
L134	13 567.750	2 969 742.990		R134	13 579.340	2 969 682.550		
L135	13 907.750	2 969 449.670		R135	13 852.490	2 969 446.000		
L136	14 205.880	2 969 192.450		R136	14 182.880	2 969 159.870		
L137	14 284.940	2 969 114.410		R137	14 301.050	2 969 037.060		
L138	14 332.190	2 969 062.020		R138	14 389.320	2 968 924.840		
L139	14 378.280	2 969 006.100		R139	14 475.770	2 968 787.470		
L140	14 433.530	2 968 931.300		R140	14 523.010	2 968 696.170		
L141	14 509.510	2 968 808.820		R141	14 562.950	2 968 601.350		
L142	14 546.280	2 968 739.600		R142	14 721.410	2 968 196.020		
L143	14 567.350	2 968 694.910		R143	14 770.740	2 968 085.260		
L144	14 599.650	2 968 617.840		R144	14 837.560	2 967 966.020		
L145	14 765.670	2 968 193.090		R145	14 929.810	2 967 832.370		
L146	14 789.820	2 968 137.420		R146	15 130.890	2 967 581.350		
L147	14 810.930	2 968 094.980		R147	15 306.190	2 967 362.500		
L148	14 833.960	2 968 050.680		R148	15 427.490	2 967 208.940		
L149	14 884.160	2 967 966.550		R149	15 728.070	2 966 771.190		
L150	14 960.210	2 967 857.900		R150	15 913.060	2 966 507.470		
L151	15 164.850	2 967 602.520		R151	16 058.400	2 966 317.710		
L152	15 336.280	2 967 388.590		R152	16 202.150	2 966 144.900		
L153	15 459.000	2 967 233.180		R153	16 298.570	2 966 035.920		

Vel	16	Van	20	P753/09
Sheet		of		

PADRESERWE KOÖRDINATE				/	ROAD RESERVE CO-ORDINATES			
LINKERKANT/LEFT HAND SIDE					REGTERKANT/RIGHT HAND SIDE			
	Y	X	WG	29°	Y	X		
L154	15 760.250	2 966 794.790		R154	16 404.890	2 965 921.620		
L155	15 946.650	2 966 528.710		R155	17 013.730	2 965 292.570		
L156	16 089.220	2 966 342.820		R156	17 242.300	2 965 056.440		
L157	16 232.530	2 966 171.010		R157	17 433.650	2 964 855.350		
L158	16 327.040	2 966 063.550		R158	17 467.400	2 964 814.260		
L159	16 439.400	2 965 943.250		R159	17 634.460	2 964 562.710		
L160	17 068.720	2 965 292.770		R160	17 859.100	2 964 224.450		
L161	17 330.550	2 965 022.160		R161	17 936.470	2 964 124.170		
L162	17 475.790	2 964 866.960		R162	18 020.680	2 964 039.510		
L163	17 543.920	2 964 777.670		R163	18 088.060	2 963 984.650		
L164	17 676.770	2 964 574.950		R164	18 138.850	2 963 949.900		
L165	17 892.270	2 964 246.110		R165	18 199.070	2 963 913.200		
L166	17 966.520	2 964 149.960		R166	18 842.310	2 963 579.900		
L167	18 047.520	2 964 068.830		R167	19 082.480	2 963 459.310		
L168	18 113.220	2 964 015.780		R168	19 209.930	2 963 400.330		
L169	18 221.060	2 963 946.700		R169	19 311.300	2 963 356.530		
L170	18 882.390	2 963 604.150		R170	19 483.730	2 963 282.470		
L171	19 103.590	2 963 493.250		R171	19 860.320	2 963 120.890		
L172	19 265.730	2 963 419.350		R172	20 520.020	2 962 843.610		
L173	19 853.690	2 963 166.850		R173	21 763.820	2 962 334.290		
L174	19 854.170	2 963 163.520		R174	22 098.480	2 962 197.160		
L175	20 492.490	2 962 888.020		R175	22 105.170	2 962 189.850		
L176	20 651.960	2 962 822.200		R176	22 207.970	2 962 147.640		
L177	21 772.230	2 962 364.540		R177	22 270.760	2 962 116.960		
L178	22 110.130	2 962 225.660		R178	22 331.060	2 962 081.300		
L179	22 119.630	2 962 227.050		R179	22 396.160	2 962 035.150		
L180	22 222.700	2 962 184.730		R180	22 456.710	2 961 982.900		
L181	22 295.150	2 962 148.170		R181	22 963.030	2 961 498.160		
L182	22 365.780	2 962 106.140		R182	23 187.700	2 961 283.080		
L183	22 432.100	2 962 057.630		R183	23 658.330	2 960 832.520		
L184	22 491.560	2 962 005.410		R184	23 740.940	2 960 760.900		
L185	23 484.940	2 961 054.050		R185	23 801.520	2 960 703.160		
L186	23 537.410	2 961 024.740		R186	23 894.520	2 960 651.470		
L187	23 571.900	2 961 000.500		R187	23 966.020	2 960 606.090		
L188	23 675.900	2 960 901.600		R188	24 050.610	2 960 563.460		
L189	23 749.810	2 960 833.390		R189	24 178.850	2 960 507.340		
L190	23 786.040	2 960 805.660		R190	24 399.130	2 960 430.970		
L191	23 888.830	2 960 727.010		R191	24 805.290	2 960 296.630		
L192	23 954.500	2 960 684.860		R192	24 820.190	2 960 291.700		
L193	24 039.520	2 960 636.580		R193	25 433.300	2 960 089.030		
L194	24 108.760	2 960 602.210		R194	25 430.930	2 960 081.280		
L195	24 197.910	2 960 564.170		R195	25 467.260	2 960 069.510		
L196	24 262.710	2 960 539.380		R196	25 517.620	2 960 053.090		
L197	24 833.360	2 960 350.510		R197	25 559.110	2 960 020.790		
L198	25 549.100	2 960 113.630		R198	25 569.380	2 960 020.420		
L199	25 595.830	2 960 113.720		R199	25 590.360	2 960 019.660		
L200	25 606.040	2 960 110.320		R200	25 638.810	2 960 021.510		
L201	25 634.290	2 960 100.900		R201	25 721.200	2 959 994.120		
L202	25 671.630	2 960 073.400		R202	25 749.710	2 959 984.650		
L203	25 766.880	2 960 041.860		R203	25 854.610	2 959 941.220		
L204	25 769.260	2 960 041.070		R204	25 903.820	2 959 916.710		
				Vel	17	Van	20	P753/09
				Sheet		of		

PADRESERWE KOÖRDINATE				/	ROAD RESERVE CO-ORDINATES			
LINKERKANT/LEFT HAND SIDE					REGTERKANT/RIGHT HAND SIDE			
	Y	X	WG	29°	Y	X		
L205	25 800.230	2 960 029.050		R205	25 975.120	2 959 872.680		
L206	25 859.080	2 960 005.890		R206	26 042.110	2 959 821.950		
L207	25 931.070	2 959 970.900		R207	26 104.060	2 959 765.280		
L208	25 948.530	2 959 960.100		R208	26 160.900	2 959 700.790		
L209	26 008.030	2 959 923.290		R209	26 210.730	2 959 636.070		
L210	26 079.520	2 959 869.680		R210	26 254.470	2 959 564.400		
L211	26 147.120	2 959 808.430		R211	26 291.200	2 959 489.000		
L212	26 191.690	2 959 758.550		R212	26 304.170	2 959 454.630		
L213	26 209.400	2 959 748.720		R213	26 320.740	2 959 410.750		
L214	26 214.480	2 959 732.380		R214	26 342.850	2 959 329.800		
L215	26 262.870	2 959 667.180		R215	26 357.260	2 959 247.130		
L216	26 306.400	2 959 596.470		R216	26 369.940	2 959 148.290		
L217	26 317.410	2 959 572.240		R217	26 415.970	2 959 129.880		
L218	26 353.730	2 959 534.500		R218	26 407.430	2 959 121.310		
L219	26 363.100	2 959 510.290		R219	26 389.610	2 959 073.870		
L220	26 363.480	2 959 467.880		R220	26 355.820	2 958 983.920		
L221	26 377.310	2 959 430.450		R221	26 394.560	2 958 866.850		
L222	26 401.380	2 959 342.500		R222	26 402.570	2 958 868.830		
L223	26 421.400	2 959 218.830		R223	26 409.310	2 958 834.520		
L224	26 461.440	2 959 175.480		R224	26 403.500	2 958 834.100		
L225	26 474.030	2 959 146.670		R225	26 421.610	2 958 736.440		
L226	26 472.520	2 959 122.110		R226	26 439.530	2 958 630.400		
L227	26 464.110	2 959 104.310		R227	26 459.620	2 958 552.860		
L228	26 457.070	2 959 099.530		R228	26 488.900	2 958 471.440		
L229	26 452.720	2 959 087.070		R229	26 518.970	2 958 405.330		
L230	26 450.900	2 959 077.490		R230	26 552.050	2 958 344.720		
L231	26 542.350	2 958 958.740		R231	26 570.310	2 958 315.010		
L232	26 552.400	2 958 887.720		R232	26 602.460	2 958 269.880		
L233	26 513.030	2 958 917.130		R233	26 652.740	2 958 207.970		
L234	26 454.550	2 958 894.020		R234	26 707.910	2 958 151.040		
L235	26 446.070	2 958 843.120		R235	26 853.470	2 958 011.900		
L236	26 440.970	2 958 842.950		R236	27 361.260	2 957 528.080		
L237	26 444.770	2 958 810.750		R237	27 954.990	2 956 962.380		
L238	26 450.900	2 958 810.500		R238	28 212.290	2 956 717.220		
L239	26 465.760	2 958 700.810		R239	28 301.320	2 956 638.480		
L240	26 495.040	2 958 564.330		R240	28 389.170	2 956 567.220		
L241	26 510.490	2 958 511.280		R241	28 430.750	2 956 535.770		
L242	26 631.540	2 958 295.510		R242	28 962.890	2 956 141.930		
L243	26 712.270	2 958 199.720		R243	30 054.310	2 955 334.150		
L244	26 877.370	2 958 044.250		R244	30 227.690	2 955 205.770		
L245	26 885.040	2 958 038.240		R245	30 421.700	2 955 060.450		
L246	26 916.180	2 958 004.420		R246	30 569.510	2 954 949.740		
L247	27 451.160	2 957 494.780		R247	30 670.620	2 954 877.050		
L248	27 983.340	2 956 987.800		R248	30 674.900	2 954 874.380		
L249	28 250.900	2 956 732.910		R249	30 810.520	2 954 789.830		
L250	28 436.610	2 956 578.570		R250	30 964.800	2 954 704.150		
L251	28 660.670	2 956 411.260		R251	31 011.250	2 954 682.640		
L252	28 984.930	2 956 172.450		R252	31 080.750	2 954 643.280		
L253	30 452.060	2 955 086.420		R253	32 473.230	2 953 898.770		
L254	30 596.780	2 954 976.500		R254	33 266.880	2 953 474.440		
L255	30 657.310	2 954 936.640		R255	33 357.640	2 953 425.850		

Vel	18	Van	20	P753/09
Sheet		of		

PADRESERWE KOÖRDINATE				/	ROAD RESERVE CO-ORDINATES			
LINKERKANT/LEFT HAND SIDE					REGTERKANT/RIGHT HAND SIDE			
		X	WG	29°	Y		X	
L256	30	708.290	2 954	899.630	R256	33	633.060	2 953 278.950
L257	30	876.960	2 954	795.720	R257	33	715.460	2 953 234.860
L258	31	152.010	2 954	648.560	R258	33	749.430	2 953 216.760
L259	32	502.820	2 953	925.930	R259	33	812.800	2 953 182.890
L260	33	721.050	2 953	274.590	R260	34	078.360	2 953 040.920
L261	34	095.710	2 953	074.580	R261	34	169.940	2 952 996.860
L262	34	105.960	2 953	094.020	R262	34	262.150	2 952 961.250
L263	34	199.670	2 953	049.470	R263	34	362.190	2 952 931.920
L264	34	297.510	2 953	012.020	R264	34	461.660	2 952 911.260
L265	34	378.810	2 952	989.320	R265	34	659.280	2 952 891.440
L266	34	496.490	2 952	967.020	R266	34	888.730	2 952 892.260
L267	34	730.140	2 952	946.450	R267	36	019.940	2 952 896.280
L268	34	750.460	2 952	935.200	R268	36	402.470	2 952 897.640
L269	35	018.410	2 952	933.350	R269	36	438.890	2 952 896.220
L270	36	142.190	2 952	935.030	R270	36	493.190	2 952 891.520
L271	36	321.640	2 952	935.150	R271	36	551.970	2 952 882.390
L272	36	376.400	2 952	934.810	R272	36	592.020	2 952 874.340
L273	36	447.110	2 952	933.130	R273	36	694.270	2 952 845.140
L274	36	503.490	2 952	928.560	R274	36	779.990	2 952 807.770
L275	36	585.330	2 952	913.670	R275	36	829.320	2 952 781.900
L276	36	650.760	2 952	897.860	R276	36	872.220	2 952 755.880
L277	36	734.800	2 952	868.790	R277	37	188.550	2 952 553.170
L278	36	815.570	2 952	832.040	R278	37	985.030	2 952 042.740
L279	36	892.650	2 952	787.770	R279	38	044.670	2 952 006.920
L280	37	176.580	2 952	605.880	R280	38	112.120	2 951 973.220
L281	38	041.340	2 952	051.590	R281	38	224.070	2 951 928.320
L282	38	076.540	2 952	033.050	R282	38	308.310	2 951 905.570
L283	38	127.080	2 952	008.140	R283	38	428.380	2 951 891.650
L284	38	207.500	2 951	976.780	R284	39	610.770	2 951 917.770
L285	38	260.460	2 951	960.730	R285	40	161.780	2 951 929.950
L286	38	313.980	2 951	947.940	R286	40	740.760	2 951 942.730
L287	38	429.630	2 951	928.610	R287	40	851.090	2 951 945.160
L288	39	623.640	2 951	955.400	R288	40	905.850	2 951 944.210
L289	40	169.470	2 951	967.650	R289	40	942.710	2 951 942.100
L290	40	726.620	2 951	980.140	R290	40	979.420	2 951 938.700
L291	40	729.110	2 952	002.360	R291	41	030.470	2 951 932.300
L292	40	743.780	2 952	002.670	R292	41	162.740	2 951 905.520
L293	40	828.530	2 952	004.470	R293	41	224.560	2 951 887.270
L294	40	934.170	2 952	002.410	R294	41	320.880	2 951 851.530
L295	41	039.480	2 951	991.670	R295	41	351.660	2 951 837.690
L296	41	336.010	2 951	936.900	R296	41	380.160	2 951 808.920
L297	41	367.860	2 951	924.050	R297	41	434.510	2 951 767.860
L298	41	416.290	2 951	904.510	R298	41	497.790	2 951 753.240
L299	41	472.800	2 951	868.130	R299	41	698.240	2 951 646.660
L300	41	512.300	2 951	841.190	R300	41	701.110	2 951 658.680
L301	41	457.570	2 951	827.820	R301	41	940.060	2 951 533.440
L302	42	009.340	2 951	539.820	R302	42	128.560	2 951 434.880
L303	42	149.890	2 951	466.540	R303	42	147.730	2 951 424.890
L304	42	168.990	2 951	456.570	R304	42	184.800	2 951 405.510
L305	42	193.880	2 951	443.600	R305	43	036.770	2 950 959.940
L306	42	878.860	2 951	086.390	R306	44	023.050	2 950 206.580

Vel	19	Van	20	P753/09
Sheet		of		

PADRESERWE KOÖRDINATE				/	ROAD RESERVE CO-ORDINATES			
LINKERKANT/LEFT HAND SIDE					REGTERKANT/RIGHT HAND SIDE			
	Y	X	WG	29°	Y	X		
L307	43 047.120	2 950	994.770	R307	44 148.000	2 950	111.140	
L308	44 039.000	2 950	241.300	R308	44 267.560	2 950	013.260	
L309	44 185.210	2 950	130.230	R309	44 331.950	2 949	951.800	
L310	44 253.190	2 950	075.510	R310	44 393.130	2 949	886.880	
L311	44 321.000	2 950	015.720	R311	44 412.690	2 949	864.410	
L312	44 363.210	2 949	974.340	R312	44 450.120	2 949	818.680	
L313	44 404.800	2 949	930.550	R313	44 807.400	2 949	362.790	
L314	44 445.200	2 949	884.420	R314	44 978.060	2 949	144.980	
L315	44 498.330	2 949	817.830	R315	45 129.560	2 948	951.680	
L316	44 881.720	2 949	328.030	R316	45 194.900	2 948	850.540	
L317	45 003.370	2 949	172.660	R317	45 239.470	2 948	771.530	
L318	45 164.200	2 948	967.220	R318	45 302.420	2 948	638.400	
L319	45 228.000	2 948	867.570	R319	45 342.890	2 948	552.830	
L320	45 271.700	2 948	790.180	R320	45 349.080	2 948	522.370	
L321	45 298.890	2 948	735.250	R321	45 302.860	2 948	505.540	
L322	45 373.240	2 948	575.630	R322	45 263.930	2 948	499.230	
L323	45 474.130	2 948	486.190	R323	45 274.780	2 948	462.190	
L324	45 435.610	2 948	448.420	R324	45 372.440	2 948	386.510	
L325	45 513.250	2 948	321.790	R325	45 907.880	2 947	848.960	
L326	45 645.590	2 948	153.030	R326	46 181.390	2 947	532.620	
L327	45 927.630	2 947	868.590	R327	46 490.040	2 947	178.530	
L328	46 216.420	2 947	537.920	R328	47 100.110	2 946	372.530	
L329	46 456.060	2 947	263.540	R329	47 107.660	2 946	367.020	
L330	46 495.030	2 947	216.210	R330	47 209.060	2 946	294.480	
L331	46 532.840	2 947	170.280	R331	47 291.970	2 946	240.550	
L332	47 030.400	2 946	507.540	R332	47 314.140	2 946	230.800	
L333	47 064.560	2 946	468.000	R333	47 420.830	2 946	170.570	
L334	47 147.590	2 946	379.560	R334	48 513.970	2 945	621.230	
L335	47 265.150	2 946	293.250	R335	48 981.170	2 945	361.880	
L336	47 441.540	2 946	200.980	R336	49 012.810	2 945	345.250	
L337	47 461.180	2 946	189.110	R337	49 234.970	2 945	218.690	
L338	48 510.590	2 945	655.370	R338	49 328.930	2 945	161.540	
L339	48 518.730	2 945	651.990	R339	49 758.740	2 944	842.920	
L340	48 534.070	2 945	645.600	R340	49 941.400	2 944	701.540	
L341	49 328.200	2 945	201.500	R341	50 196.720	2 944	487.300	
L342	49 779.010	2 944	866.120	R342	50 397.450	2 944	313.250	
L343	49 959.030	2 944	725.880	R343	50 441.240	2 944	275.960	
L344	50 195.500	2 944	528.700					
L345	50 419.070	2 944	338.430					
L346	50 463.080	2 944	301.360					

Vel	20	Van	20	P753/09
Sheet		of		