



# Government Gazette Staatskoerant

REPUBLIC OF SOUTH AFRICA  
REPUBLIEK VAN SUID-AFRIKA

Vol. 570

Pretoria, 11 December 2012  
Desember

No. 35968

*N.B. The Government Printing Works will not be held responsible for the quality of "Hard Copies" or "Electronic Files" submitted for publication purposes*



9771682584003



**AIDS HELPLINE: 0800-0123-22 Prevention is the cure**

**IMPORTANT NOTICE**

**The Government Printing Works will not be held responsible for faxed documents not received due to errors on the fax machine or faxes received which are unclear or incomplete. Please be advised that an "OK" slip, received from a fax machine, will not be accepted as proof that documents were received by the GPW for printing. If documents are faxed to the GPW it will be the sender's responsibility to phone and confirm that the documents were received in good order.**

**Furthermore the Government Printing Works will also not be held responsible for cancellations and amendments which have not been done on original documents received from clients.**

**CONTENTS**

**INHOUD**

<i>No.</i>	<i>Page No.</i>	<i>Gazette No.</i>	<i>No.</i>	<i>Bladsy No.</i>	<i>Koerant No.</i>
<b>GOVERNMENT NOTICE</b>			<b>GOEWERMENTSKENNISGEWING</b>		
<b>Transport, Department of</b>			<b>Vervoer, Departement van</b>		
<i>Government Notice</i>			<i>Goewermentskennisgewing</i>		
1038			1038		
South African National Roads Agency Limited and the National Roads Act (7/1998): Declaration amendment of National Road N2 Section 3 .....		3	35968	Suid-Afrikaanse Nasionale Padagentskap Beperk en die Nasionale Paaie Wet (7/1998): Verklaring wysiging van Nasionale Pad N2 Seksie 3 .....	
				4	35968

---

## GOVERNMENT NOTICE

---

### DEPARTMENT OF TRANSPORT

No. 1038

11 December 2012

## THE SOUTH AFRICAN NATIONAL ROADS AGENCY LIMITED

Registration No: 98/09584/06

---

### DECLARATION AMENDMENT OF NATIONAL ROAD N2 SECTION 3

AMENDMENT OF DECLARATION NO. 543 OF 2003

By virtue of section 40(1)(b) of the South African National Roads Agency Limited and the National Roads Act, 1998 (Act No. 7 of 1998), I hereby amend Declaration No. 543 of 2003 by substituting the section of the descriptive declaration from Caledon up to Riviersonderend, with the subjoined sheets 1 to 19 of Plan No. P778/09.

(National Road N2 Section 3: Caledon – Riviersonderend)



---

MINISTER OF TRANSPORT

## GOEWERMENTSKENNISGEWING

---

---

### DEPARTEMENT VAN VERVOER

No. 1038

11 Desember 2012

## DIE SUID-AFRIKAANSE NASIONALE PADAGENTSKAP BEPERK

Registrasie No: 98/09584/06

---

### VERKLARING WYSIGING VAN NASIONALE PAD N2 SEKSIE 3.

WYSIGING VAN VERKLARING NO. 543 VAN 2003

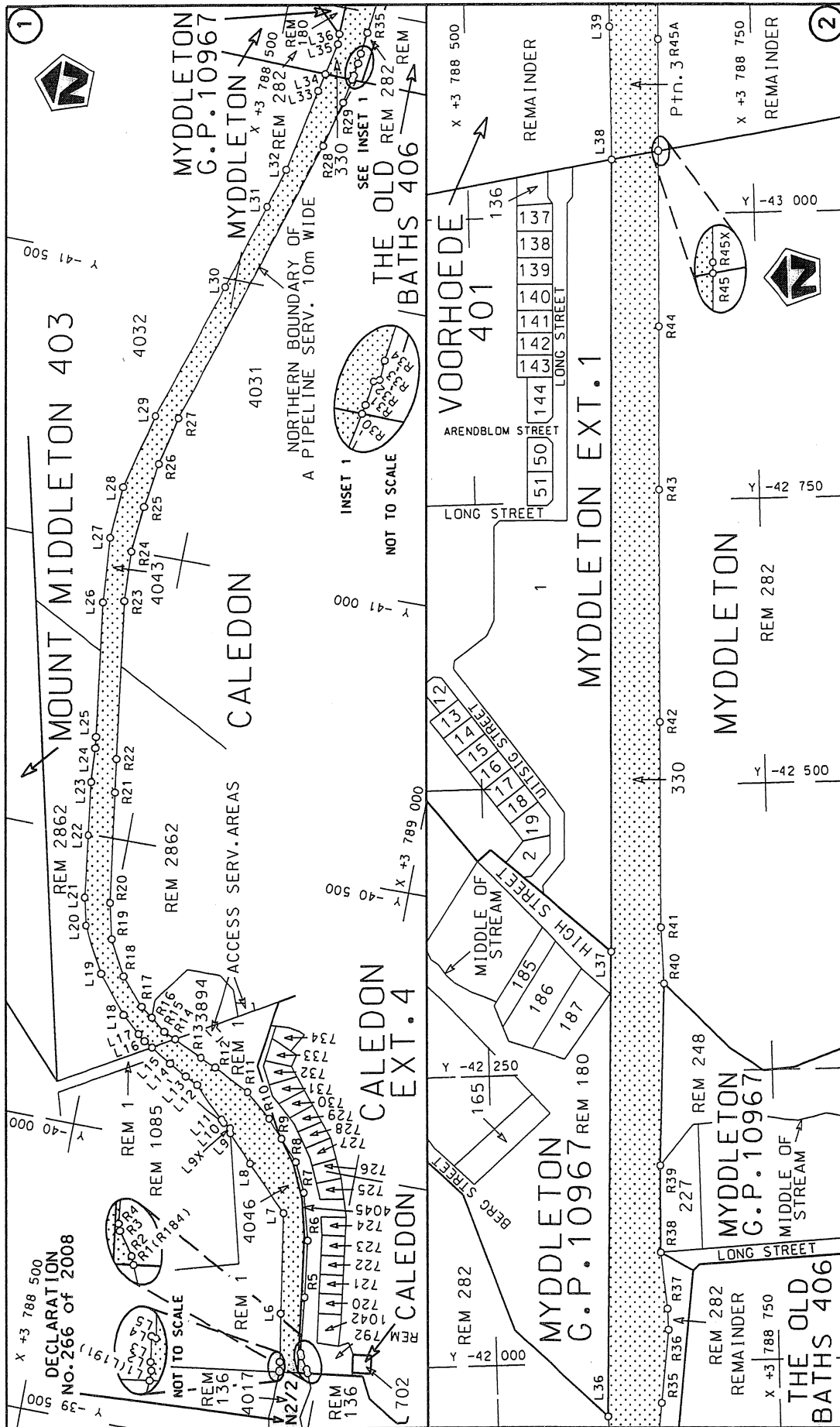
Kragtens Artikel 40(1)(b) van die Suid Afrikaanse Nasionale Padagentskap Beperk en die Nasionale Paaie Wet, 1998 (Wet no.7 van 1998), wysig ek hiermee Verklaring no. 543 van 2003, deur die gedeelte van die beskrywende verklaring vanaf Caledon tot by Riviersonderend, te vervang met meegaande velle 1 tot 19 van Plan no. P778/09.

(Nasionale Pad N2 Seksie 3: Caledon – Riviersonderend)

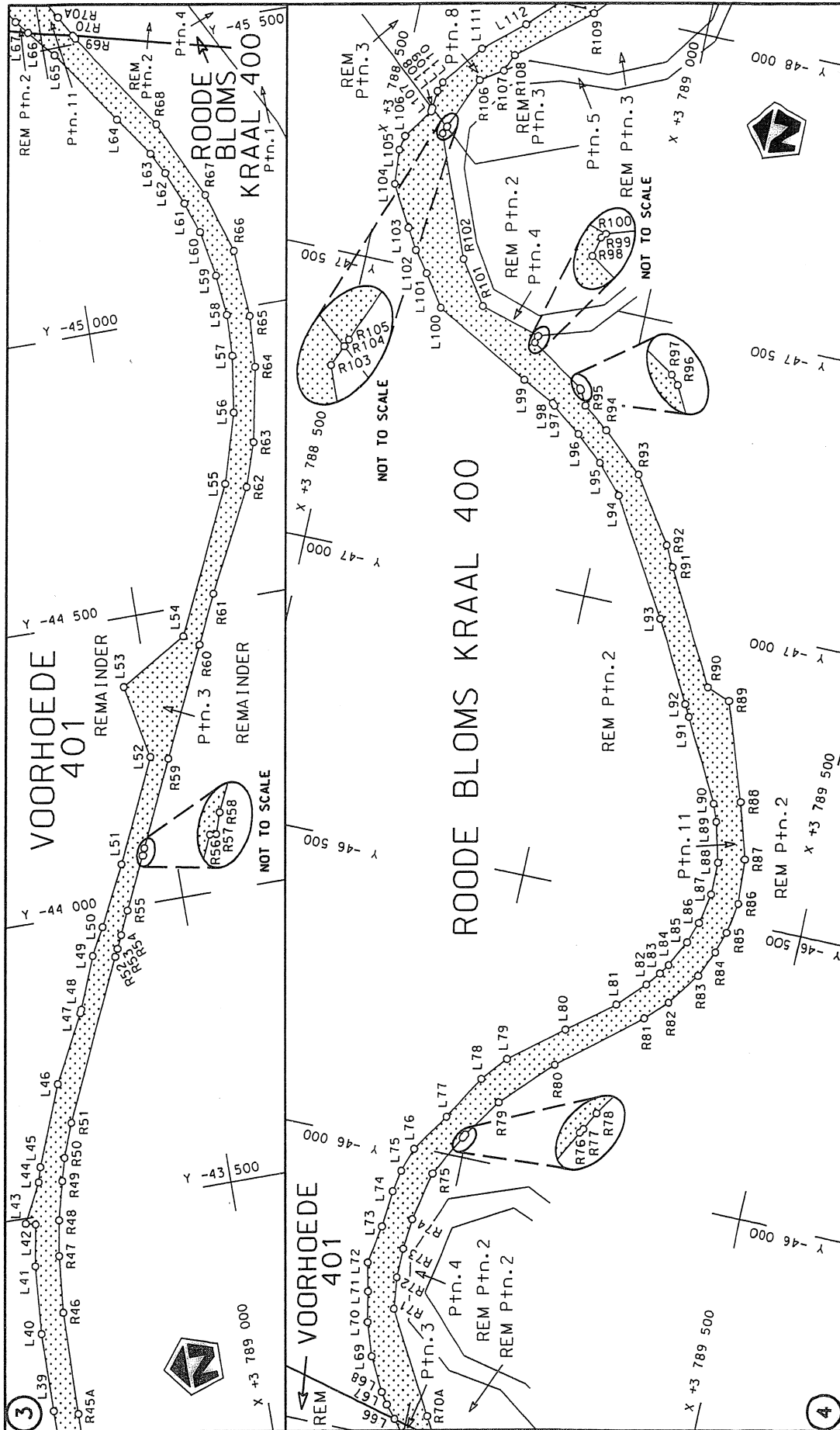
  

---

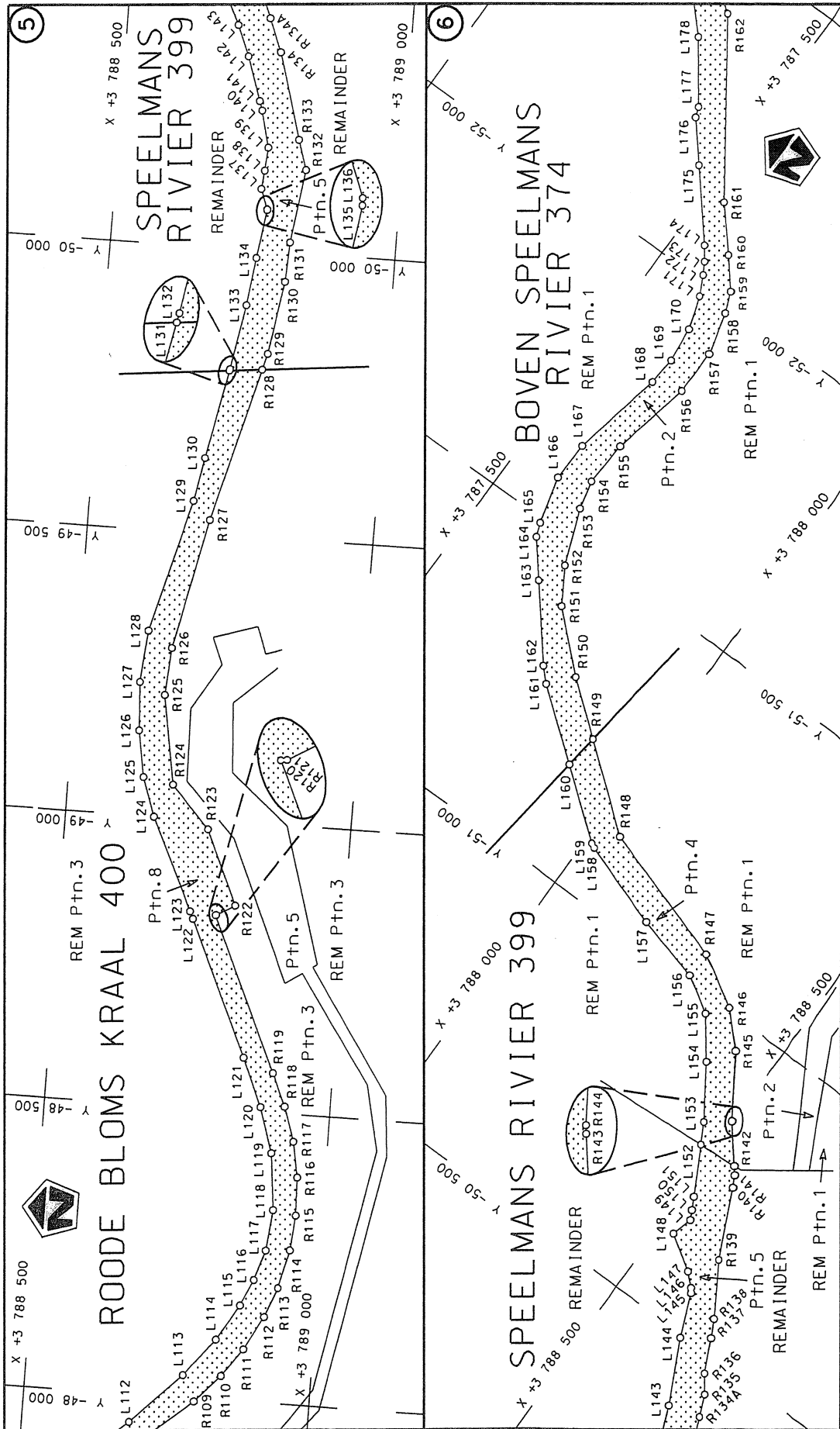
MINISTER VAN VERVOER



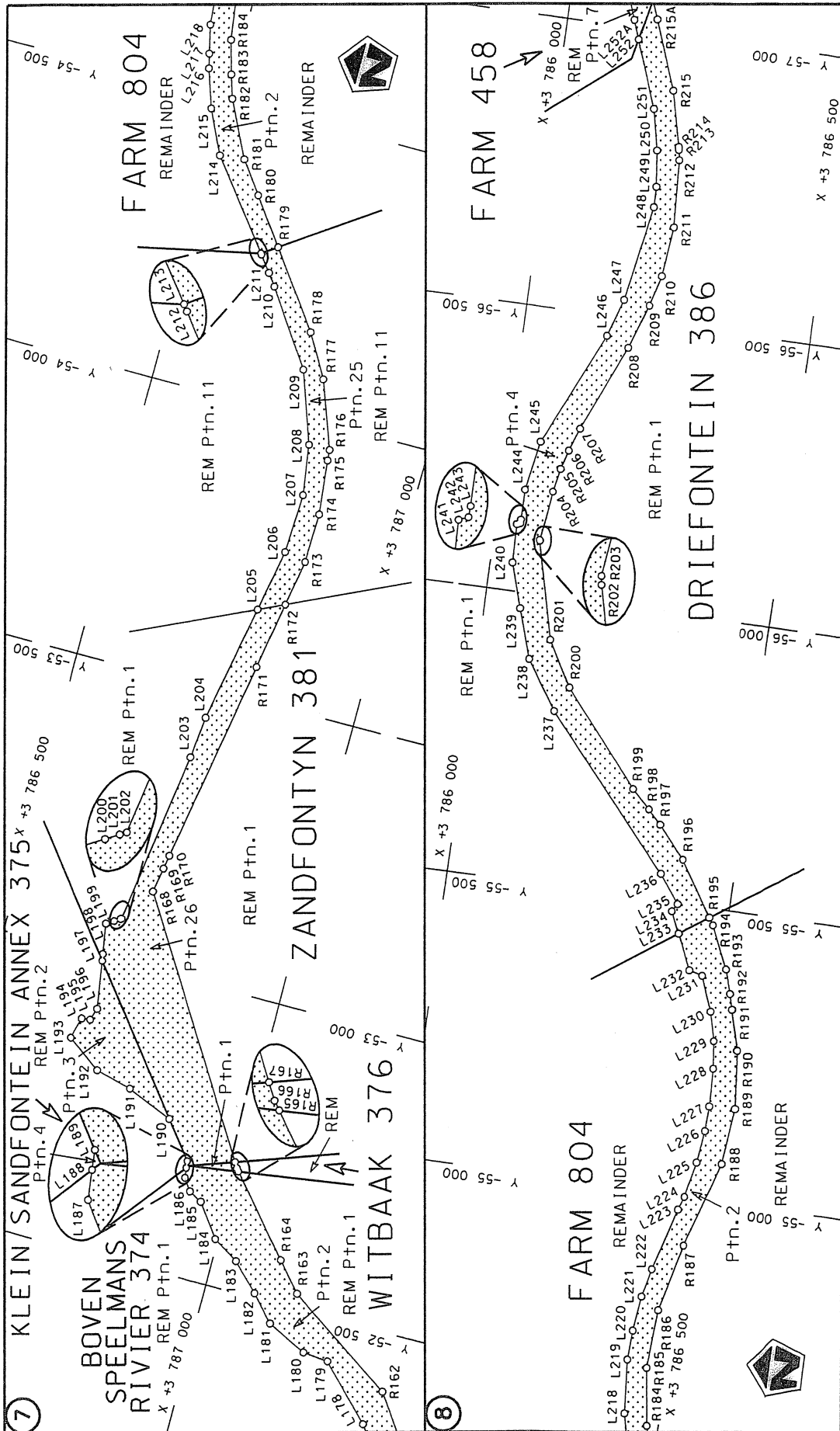
Die Suid Afrikaanse Nasionale Padagentskap Beperk The South African National Roads Agency Limited	Die figuur getoon The figure shown	steldie padreserwe voor van 'n gedeelte represents the road reserve of a portion van Nasionale Roete N2 of National Route	Vel Sheet 1 of 19
			Plan P778/09



<p>Die Suid Afrikaanse Nasionale Podagentskop Beperk The South African National Roads Agency Limited</p>	<p>Die figuur getoon The figure shown</p>	<p>stelsel padreserwe voor van 'n gedeelte represents the road reserve of a portion van Nasionale Roete N2 Saksie of National Route N2 Section</p>	<p>Vel Sheet 2 of 19 Plan P778/09</p>
--	---	--	---

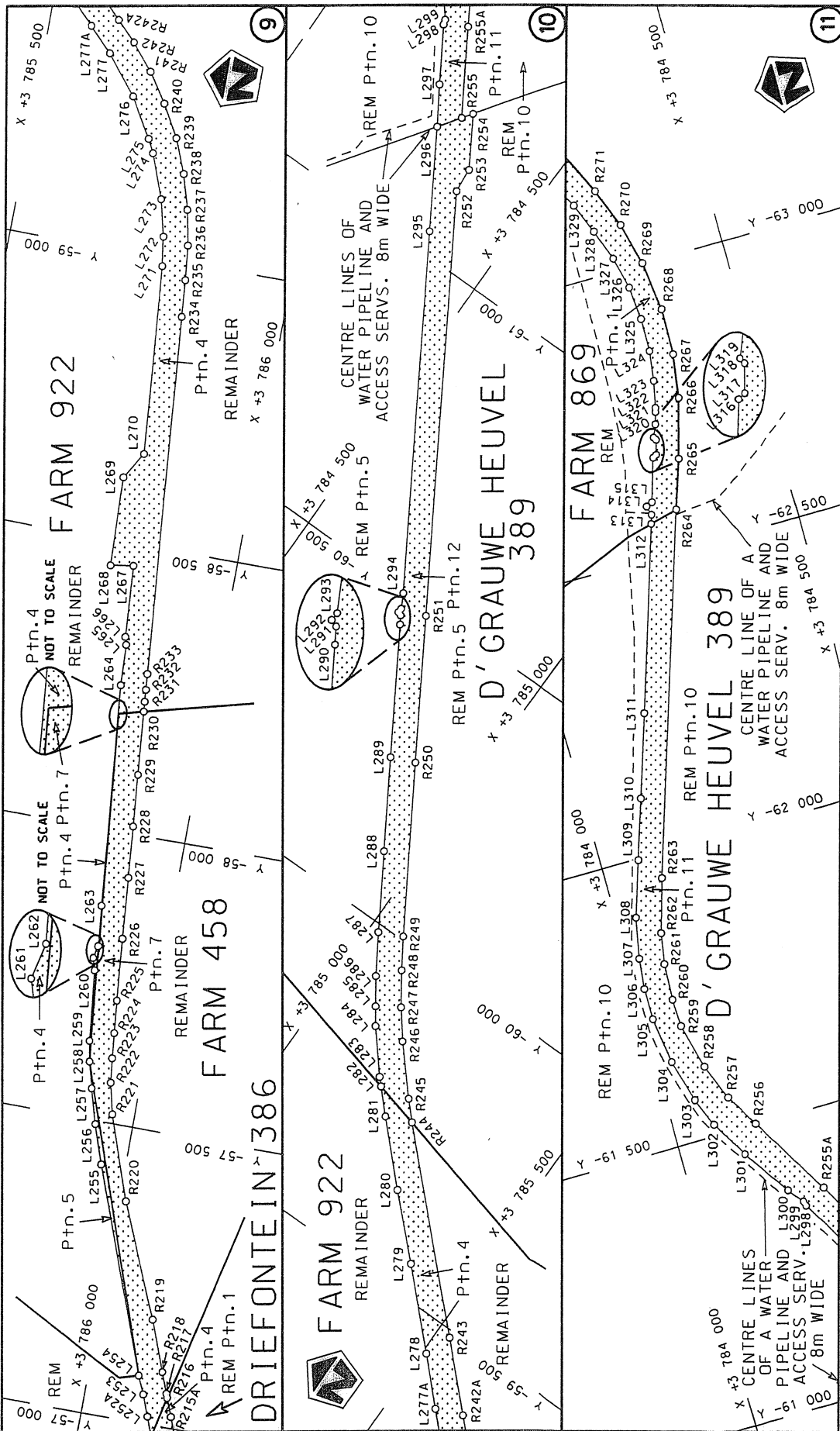


<p>Die Suid Afrikaanse Nasionale Padagentskap Beperk The South African National Roads Agency Limited</p>	<p>Die figuur getoon The figure shown</p>	<p>stelde padreserwe voor van 'n gedeelte represents the road reserve of a portion van Nasionale Roete N2 of National Route</p>	<p>Vel Sheet 3 of 19 Plan P778/09</p>
--	---	---	---

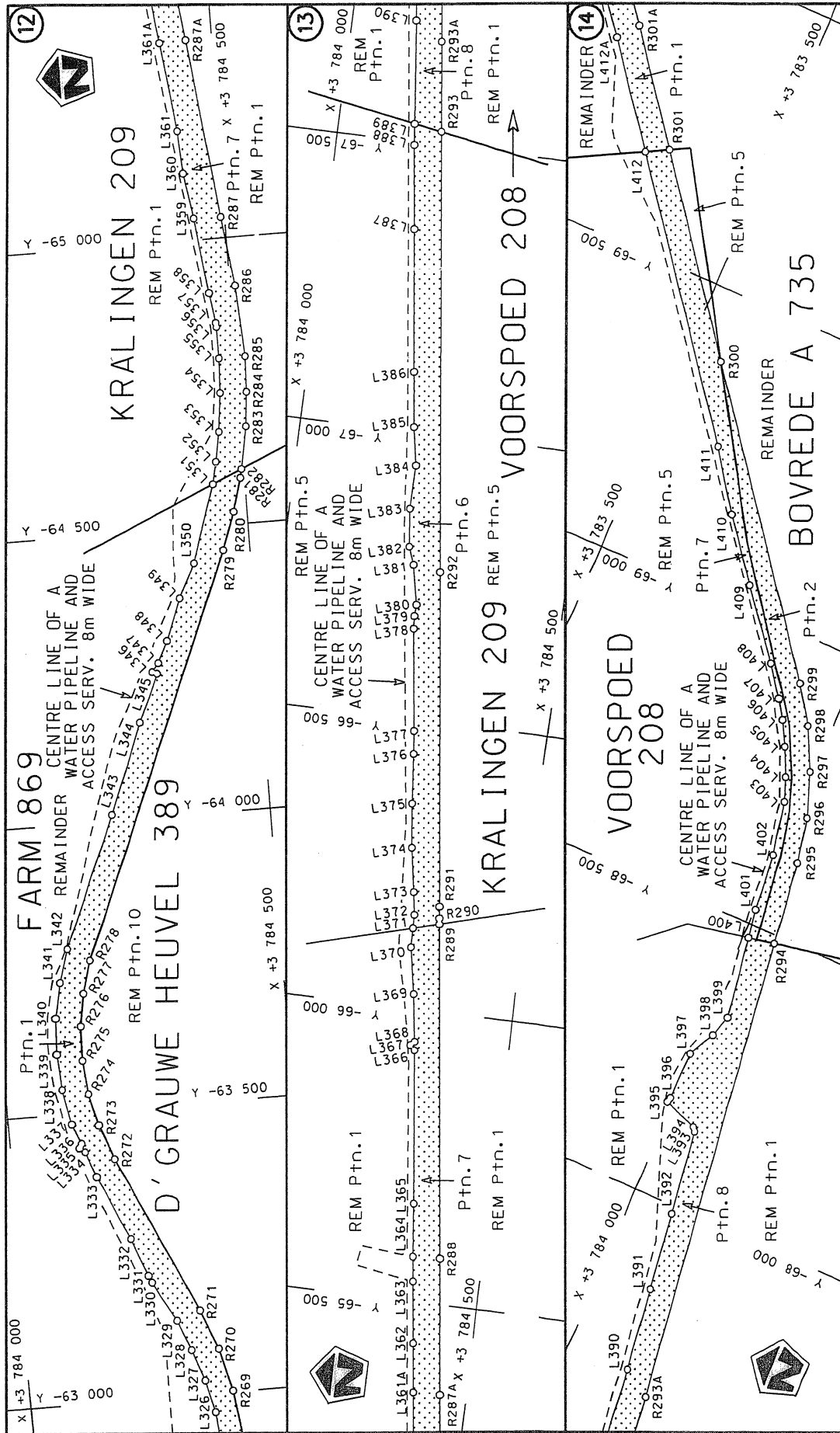


<p>Die Suid Afrikaanse Nasionale Padagentskap Beperk The South African National Roads Agency Limited</p>	<p>Die figuur getoon The figure shown</p>	<p>steldie podreserwe voor van 'n gedeelte represents the road reserve of a portion van Nasionale Roete N2 Seksie N2 Section 3</p>	<p>Vel Sheet 4 van of 19 Plan P778/09</p>
--	---	--	---

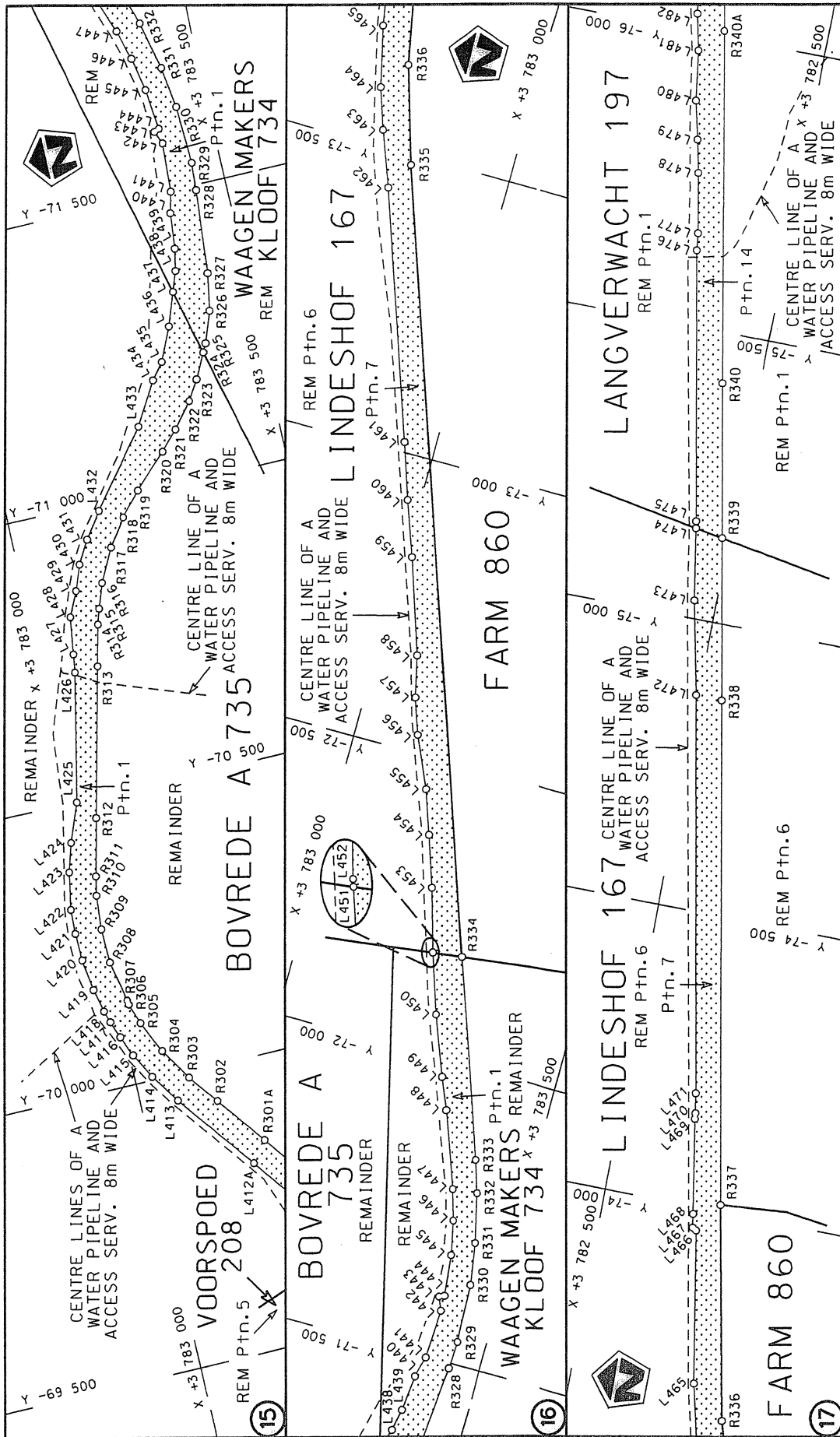




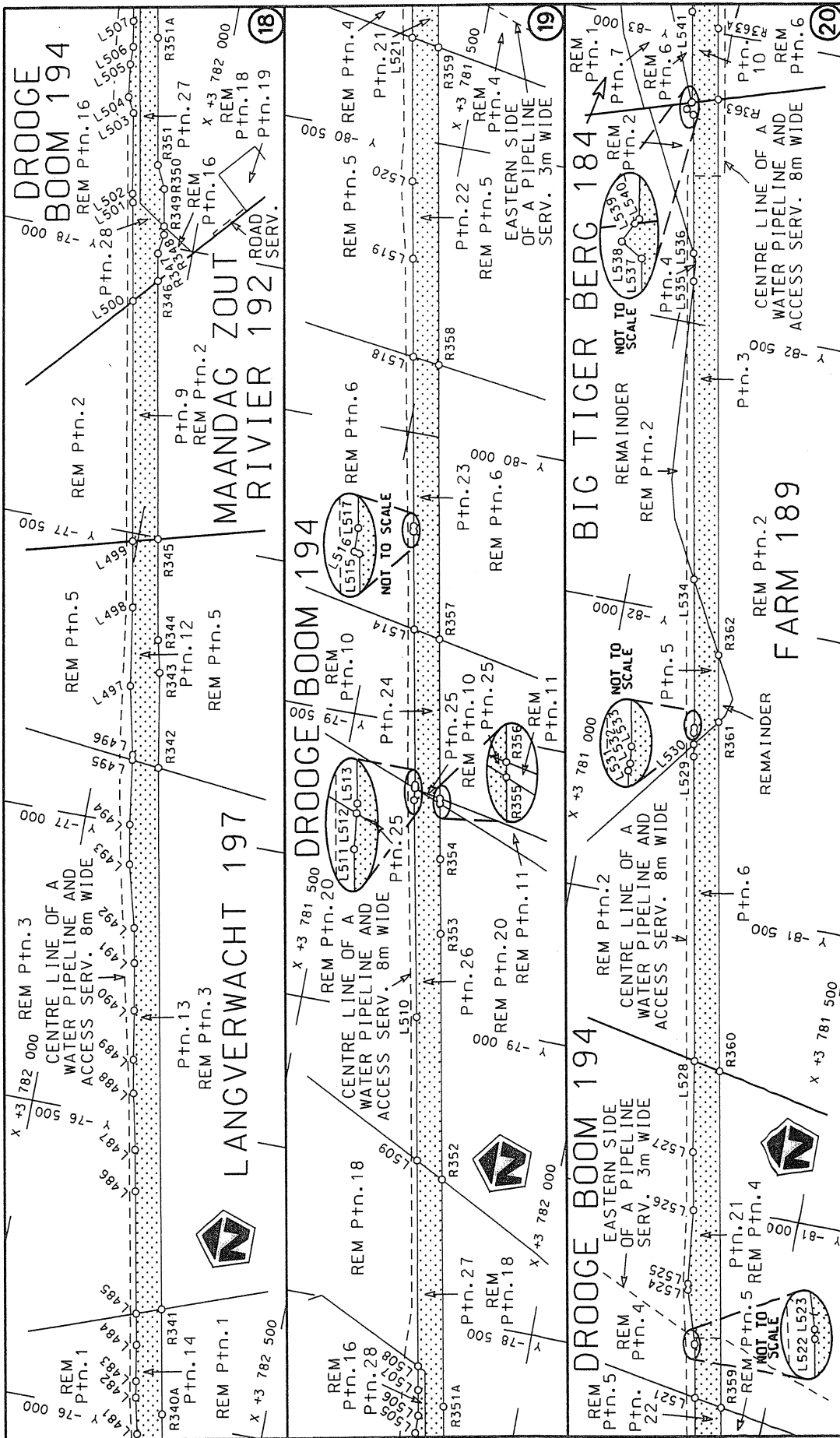
Die Suid Afrikaanse Nasionale Padagentskap Beperk The South African National Roads Agency Limited	Die figuur getoon The figure shown	steil die padreserwe voor van 'n gedeelte represents the road reserve of a portion van Nasionale Roete N2 of National Route	Vel Sheet 5 of 19
			Plan P778/05

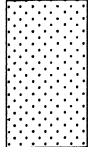


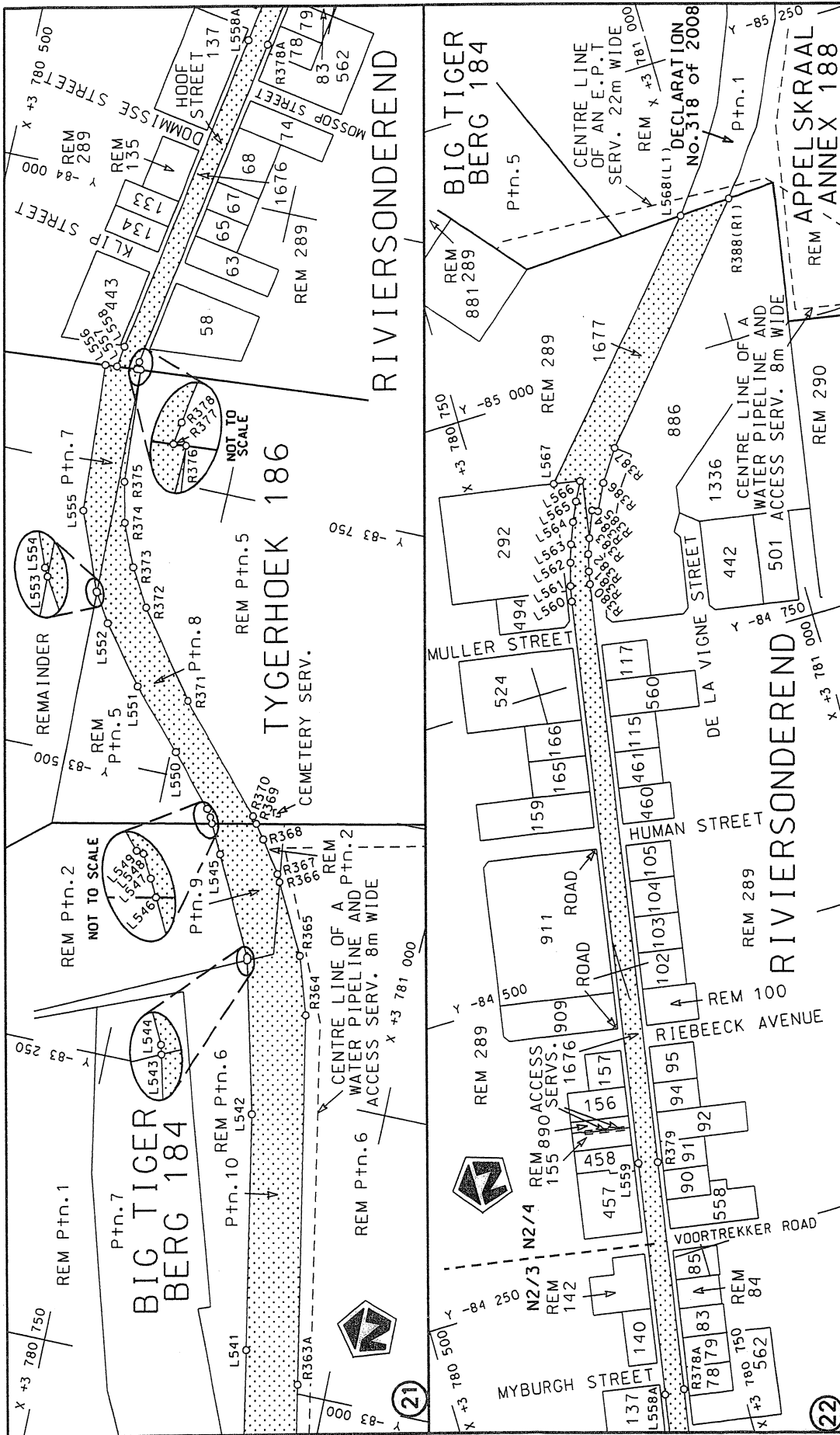
Die Suid Afrikaanse Nasionale Padagentskap Beperk The South African National Roads Agency Limited	Die figuur getoon The figure shown		steldie padreserwe voor van 'n gedeelte represents the road reserve of a portion van Nasionale Roete N2 of National Route	
			Seksie 3	Plan P778/09
			Vel Sheet 6 of 19	



<p>Die Suid Afrikaanse Nasionale Padagentskap Beperk The South African National Roads Agency Limited</p>	<p>Die figuur getoon The figure shown</p>	<p>steldie padreserwe voor van 'n gedeelte represents the road reserve of a portion van Nasionale Roete N2 of National Route</p>	<p>Vel Sheet 7 of 19 Plan P778/09</p>
		<p>Seksie 3</p>	



Die Suid Afrikaanse Nasionale Padagentskap Beperk The South African National Roads Agency Limited	Die figuur getoon The figure shown		steldie padreserwe voor van 'n gedeelte represents the road reserve of a portion van Nasionale Roete N2 of National Route	Vel Sheet 8	van of 19
				Plan P778/09	3 Seksie Section



<p>Die Suid Afrikaanse Nasionale Padagentskap Beperk The South African National Roads Agency Limited</p>	<p>Die figuur getoon The figure shown</p> <p>steldie padreserwe voor van 'n gedeelte represents the road reserve of a portion van Nasionale Roete N2 of National Route</p>	<p>Vel Sheet 9 of 19 Plan P778/09</p>
--	--	---

PADRESERWE KOÖRDINATE / ROAD RESERVE CO-ORDINATES									
LINKERKANT/LEFT HAND SIDE					REGTERKANT/RIGHT HAND SIDE				
	Y	X	WG 19°		Y	X			
L1	-39 644.070	3 788 931.850		R1	-39 650.990	3 788 981.800			
L2	-39 645.530	3 788 931.830		R2	-39 658.090	3 788 978.710			
L3	-39 646.720	3 788 931.510		R3	-39 677.740	3 788 964.990			
L4	-39 661.540	3 788 929.130		R4	-39 683.660	3 788 962.650			
L5	-39 661.340	3 788 929.890		R5	-39 779.430	3 788 951.980			
L6	-39 743.850	3 788 915.440		R6	-39 876.700	3 788 939.370			
L7	-39 915.360	3 788 888.090		R7	-39 956.700	3 788 917.220			
L8	-39 988.410	3 788 814.120		R8	-40 005.970	3 788 893.600			
L9	-40 033.140	3 788 770.290		R9	-40 040.720	3 788 860.870			
L9X	-40 041.870	3 788 768.210		R10	-40 070.660	3 788 832.670			
L10	-40 048.390	3 788 755.340		R11	-40 108.730	3 788 786.920			
L11	-40 053.720	3 788 750.120		R12	-40 140.120	3 788 722.880			
L12	-40 104.390	3 788 696.770		R13	-40 152.000	3 788 694.610			
L13	-40 115.510	3 788 675.090		R14	-40 175.270	3 788 644.890			
L14	-40 132.270	3 788 644.320		R15	-40 184.680	3 788 624.410			
L15	-40 153.860	3 788 608.030		R16	-40 204.740	3 788 598.080			
L16	-40 162.370	3 788 593.740		R17	-40 220.140	3 788 577.860			
L17	-40 172.690	3 788 581.410		R18	-40 266.200	3 788 536.940			
L18	-40 200.460	3 788 549.710		R19	-40 326.270	3 788 505.250			
L19	-40 263.850	3 788 498.550		R20	-40 388.010	3 788 490.430			
L20	-40 341.890	3 788 456.760		R21	-40 579.290	3 788 462.840			
L21	-40 389.440	3 788 445.430		R22	-40 637.280	3 788 454.390			
L22	-40 497.680	3 788 431.810		R23	-40 911.550	3 788 414.990			
L23	-40 589.630	3 788 419.670		R24	-40 999.220	3 788 410.790			
L24	-40 649.550	3 788 415.400		R25	-41 080.260	3 788 417.280			
L25	-40 668.850	3 788 412.760		R26	-41 159.240	3 788 428.550			
L26	-40 902.770	3 788 379.550		R27	-41 244.350	3 788 446.600			
L27	-41 016.450	3 788 370.420		R28	-41 757.550	3 788 607.910			
L28	-41 107.900	3 788 375.130		R29	-41 837.940	3 788 628.040			
L29	-41 240.840	3 788 406.680		R30	-41 879.690	3 788 635.920			
L30	-41 484.620	3 788 483.510		R31	-41 887.790	3 788 637.440			
L31	-41 635.230	3 788 529.820		R32	-41 909.250	3 788 640.330			
L32	-41 704.950	3 788 551.230		R33	-41 909.630	3 788 641.180			
L33	-41 849.830	3 788 581.170		R34	-41 927.030	3 788 642.140			
L34	-41 880.760	3 788 587.870		R35	-41 964.500	3 788 646.400			
L35	-41 935.810	3 788 599.800		R36	-42 027.620	3 788 653.940			
L36	-41 953.650	3 788 599.010		R37	-42 045.860	3 788 653.540			
L37	-42 355.500	3 788 611.680		R38	-42 094.690	3 788 648.770			
L38	-43 048.400	3 788 627.440		R39	-42 169.600	3 788 650.210			
L39	-43 163.840	3 788 627.820		R40	-42 326.810	3 788 657.300			
L40	-43 299.190	3 788 629.280		R41	-42 375.740	3 788 655.770			
L41	-43 416.210	3 788 637.840		R42	-42 555.480	3 788 658.960			
L42	-43 487.350	3 788 650.580		R43	-42 759.410	3 788 662.670			
L43	-43 510.220	3 788 656.300		R44	-42 902.550	3 788 665.520			
L44	-43 557.790	3 788 667.840		R45	-43 054.880	3 788 668.170			
L45	-43 583.120	3 788 675.280		R45X	-43 055.670	3 788 668.180			
L46	-43 718.740	3 788 728.950		R46	-43 329.350	3 788 672.860			
L47	-43 832.790	3 788 788.560		R47	-43 426.610	3 788 682.040			
L48	-43 838.930	3 788 791.530		R48	-43 487.350	3 788 692.160			
L49	-43 926.730	3 788 827.150		R49	-43 552.860	3 788 708.800			
L50	-43 973.180	3 788 852.690		R50	-43 591.600	3 788 719.380			

Vel	10	Van	19	P778/09
Sheet		of		

PADRESERWE KOÖRDINATE / ROAD RESERVE CO-ORDINATES										
LINKERKANT/LEFT HAND SIDE					REGTERKANT/RIGHT HAND SIDE					
	Y	X	WG 19°		Y	X				
L51	-44 075.490	3 788 903.590		R51	-43 649.060	3 788 741.600				
L52	-44 251.350	3 788 984.390		R52	-43 918.430	3 788 866.270				
L53	-44 379.960	3 788 958.540		R53	-43 931.350	3 788 872.260				
L54	-44 449.590	3 789 076.210		R54	-43 953.700	3 788 882.390				
L55	-44 700.800	3 789 192.370		R55	-43 993.970	3 788 900.590				
L56	-44 821.890	3 789 227.290		R56	-44 083.940	3 788 942.310				
L57	-44 920.050	3 789 241.150		R57	-44 083.820	3 788 943.550				
L58	-44 991.730	3 789 243.260		R58	-44 096.070	3 788 947.640				
L59	-45 062.320	3 789 235.960		R59	-44 243.010	3 789 015.100				
L60	-45 141.900	3 789 220.330		R60	-44 430.230	3 789 101.410				
L61	-45 195.320	3 789 201.760		R61	-44 514.420	3 789 140.420				
L62	-45 252.950	3 789 177.300		R62	-44 688.900	3 789 228.120				
L63	-45 290.440	3 789 157.110		R63	-44 764.650	3 789 253.280				
L64	-45 358.470	3 789 108.950		R64	-44 894.150	3 789 277.470				
L65	-45 487.950	3 789 018.170		R65	-44 983.360	3 789 282.710				
L66	-45 534.630	3 788 978.770		R66	-45 099.630	3 789 273.510				
L67	-45 556.490	3 788 960.320		R67	-45 203.790	3 789 239.960				
L68	-45 576.070	3 788 947.550		R68	-45 339.100	3 789 175.450				
L69	-45 632.630	3 788 916.690		R69	-45 509.110	3 789 058.770				
L70	-45 688.740	3 788 897.120		R70	-45 515.530	3 789 055.100				
L71	-45 740.640	3 788 886.780		R71	-45 720.780	3 788 937.540				
L72	-45 789.330	3 788 875.740		R72	-45 774.830	3 788 931.380				
L73	-45 855.320	3 788 887.590		R73	-45 825.490	3 788 932.400				
L74	-45 918.260	3 788 892.730		R74	-45 878.300	3 788 937.000				
L75	-45 955.870	3 788 900.680		R75	-45 962.360	3 788 955.420				
L76	-45 997.330	3 788 914.760		R76	-46 033.500	3 788 994.080				
L77	-46 062.780	3 788 958.910		R77	-46 034.790	3 788 994.900				
L78	-46 139.110	3 789 004.070		R78	-46 039.990	3 788 997.610				
L79	-46 181.900	3 789 040.490		R79	-46 106.090	3 789 042.470				
L80	-46 253.590	3 789 129.720		R80	-46 189.440	3 789 123.350				
L81	-46 315.290	3 789 207.830		R81	-46 302.640	3 789 261.400				
L82	-46 360.810	3 789 252.670		R82	-46 338.350	3 789 297.510				
L83	-46 384.780	3 789 272.210		R83	-46 394.980	3 789 338.900				
L84	-46 401.980	3 789 283.890		R84	-46 441.360	3 789 360.170				
L85	-46 447.760	3 789 307.310		R85	-46 478.920	3 789 372.030				
L86	-46 485.280	3 789 320.760		R86	-46 532.570	3 789 381.320				
L87	-46 538.590	3 789 331.300		R87	-46 610.410	3 789 375.890				
L88	-46 595.190	3 789 331.540		R88	-46 707.060	3 789 347.510				
L89	-46 664.250	3 789 313.040		R89	-46 853.390	3 789 268.350				
L90	-46 694.110	3 789 301.650		R90	-46 890.570	3 789 247.980				
L91	-46 832.940	3 789 226.360		R91	-47 082.870	3 789 142.540				
L92	-46 853.470	3 789 215.220		R92	-47 118.520	3 789 123.690				
L93	-46 989.910	3 789 140.390		R93	-47 228.870	3 789 048.400				
L94	-47 185.430	3 789 021.840		R94	-47 292.590	3 788 976.330				
L95	-47 234.400	3 788 977.400		R95	-47 327.000	3 788 931.190				
L96	-47 275.570	3 788 929.880		R96	-47 351.620	3 788 917.940				
L97	-47 314.710	3 788 878.600		R97	-47 354.170	3 788 915.540				
L98	-47 318.530	3 788 874.440		R98	-47 415.510	3 788 821.590				
L99	-47 347.790	3 788 817.580		R99	-47 426.930	3 788 824.460				
L100	-47 440.780	3 788 648.410		R100	-47 427.850	3 788 825.230				
L101	-47 494.400	3 788 611.660		R101	-47 458.550	3 788 719.430				
					Vel	11	Van	19	P778/09	
					Sheet		of			

PADRESERWE KOÖRDINATE / ROAD RESERVE CO-ORDINATES											
LINKERKANT/LEFT HAND SIDE					REGTERKANT/RIGHT HAND SIDE						
	Y		X	WG 19°		Y		X			
L102	-47	529.640	3	788	584.010	R102	-47	531.570	3	788	669.360
L103	-47	564.780	3	788	563.310	R103	-47	736.720	3	788	587.080
L104	-47	633.950	3	788	523.120	R104	-47	749.070	3	788	592.230
L105	-47	693.330	3	788	518.610	R105	-47	750.150	3	788	592.680
L106	-47	718.880	3	788	523.280	R106	-47	840.130	3	788	630.300
L107	-47	769.860	3	788	559.390	R107	-47	865.010	3	788	668.040
L108	-47	776.090	3	788	559.750	R108	-47	895.210	3	788	680.990
L109	-47	806.270	3	788	562.220	R109	-47	994.590	3	788	798.720
L110	-47	823.100	3	788	568.330	R110	-48	041.920	3	788	843.030
L111	-47	894.060	3	788	622.360	R111	-48	090.500	3	788	878.810
L112	-47	951.050	3	788	688.470	R112	-48	148.550	3	788	910.680
L113	-48	038.520	3	788	775.540	R113	-48	199.960	3	788	930.930
L114	-48	104.080	3	788	829.610	R114	-48	266.360	3	788	947.090
L115	-48	165.800	3	788	867.560	R115	-48	326.770	3	788	952.900
L116	-48	211.020	3	788	888.030	R116	-48	392.520	3	788	950.730
L117	-48	263.190	3	788	905.120	R117	-48	453.310	3	788	939.490
L118	-48	333.730	3	788	912.690	R118	-48	512.400	3	788	920.050
L119	-48	431.110	3	788	902.580	R119	-48	568.880	3	788	895.270
L120	-48	509.010	3	788	877.980	R120	-48	835.540	3	788	775.000
L121	-48	592.050	3	788	842.350	R121	-48	835.690	3	788	776.180
L122	-48	826.150	3	788	735.730	R122	-48	854.340	3	788	808.030
L123	-48	838.880	3	788	729.700	R123	-48	983.870	3	788	750.300
L124	-48	999.010	3	788	654.200	R124	-49	057.320	3	788	682.960
L125	-49	066.860	3	788	631.000	R125	-49	212.680	3	788	656.740
L126	-49	147.930	3	788	617.220	R126	-49	295.390	3	788	662.560
L127	-49	232.270	3	788	612.190	R127	-49	524.360	3	788	711.920
L128	-49	323.090	3	788	620.030	R128	-49	793.690	3	788	783.360
L129	-49	555.700	3	788	680.720	R129	-49	821.790	3	788	790.810
L130	-49	632.260	3	788	694.870	R130	-49	949.130	3	788	811.270
L131	-49	788.010	3	788	726.070	R131	-50	017.910	3	788	814.540
L132	-49	790.750	3	788	726.620	R132	-50	145.300	3	788	832.950
L133	-49	903.870	3	788	746.890	R133	-50	196.600	3	788	816.460
L134	-49	987.040	3	788	757.870	R134	-50	345.590	3	788	773.190
L135	-50	071.210	3	788	770.470	R135	-50	440.370	3	788	735.060
L136	-50	072.300	3	788	770.440	R136	-50	469.630	3	788	713.280
L137	-50	107.100	3	788	757.280	R137	-50	525.580	3	788	686.330
L138	-50	139.150	3	788	760.780	R138	-50	555.070	3	788	670.390
L139	-50	179.440	3	788	763.870	R139	-50	642.680	3	788	617.440
L140	-50	242.620	3	788	748.200	R140	-50	757.510	3	788	564.410
L141	-50	258.950	3	788	742.660	R141	-50	776.550	3	788	554.070
L142	-50	334.730	3	788	716.860	R142	-50	788.860	3	788	544.170
L143	-50	387.540	3	788	695.060	R143	-50	848.570	3	788	496.110
L144	-50	494.200	3	788	641.940	R144	-50	849.560	3	788	495.370
L145	-50	567.610	3	788	612.200	R145	-50	950.240	3	788	429.130
L146	-50	574.840	3	788	606.870	R146	-51	004.630	3	788	376.500
L147	-50	594.470	3	788	585.650	R147	-51	055.390	3	788	288.620
L148	-50	632.100	3	788	526.260	R148	-51	132.570	3	788	045.860
L149	-50	668.650	3	788	536.730	R149	-51	241.760	3	787	906.460
L150	-50	683.980	3	788	528.720	R150	-51	311.310	3	787	817.650
L151	-50	704.290	3	788	517.730	R151	-51	396.670	3	787	723.830
L152	-50	784.170	3	788	474.960	R152	-51	457.810	3	787	686.380

Vel Sheet	12	Van of	19	P778/09
--------------	----	-----------	----	---------



PADRESERWE KOÖRDINATE / ROAD RESERVE CO-ORDINATES									
LINKERKANT/LEFT HAND SIDE			REGTERKANT/RIGHT HAND SIDE						
	Y	X	WG 19°		Y	X			
L153	-50	818.970	3 788	456.320	R153	-51	554.200	3 787	648.890
L154	-50	905.450	3 788	398.850	R154	-51	604.630	3 787	636.940
L155	-50	971.860	3 788	348.390	R155	-51	684.490	3 787	641.490
L156	-51	008.690	3 788	286.480	R156	-51	825.270	3 787	670.340
L157	-51	039.300	3 788	170.760	R157	-51	905.490	3 787	670.580
L158	-51	089.750	3 788	020.700	R158	-51	979.470	3 787	651.060
L159	-51	093.460	3 788	012.300	R159	-52	015.570	3 787	636.540
L160	-51	181.340	3 787	898.910	R160	-52	064.450	3 787	595.860
L161	-51	270.660	3 787	782.540	R161	-52	133.580	3 787	535.060
L162	-51	293.380	3 787	759.750	R162	-52	400.640	3 787	346.510
L163	-51	408.980	3 787	664.790	R163	-52	526.390	3 787	159.430
L164	-51	468.270	3 787	616.260	R164	-52	574.930	3 787	116.520
L165	-51	492.330	3 787	606.960	R165	-52	703.050	3 787	005.340
L166	-51	575.380	3 787	585.130	R166	-52	707.800	3 787	001.210
L167	-51	645.380	3 787	586.940	R167	-52	717.140	3 786	995.390
L168	-51	808.280	3 787	619.920	R168	-53	132.760	3 786	736.100
L169	-51	857.470	3 787	623.500	R169	-53	176.010	3 786	743.380
L170	-51	919.520	3 787	616.510	R170	-53	200.140	3 786	747.530
L171	-51	976.610	3 787	597.120	R171	-53	557.190	3 786	809.210
L172	-52	010.350	3 787	580.540	R172	-53	675.660	3 786	829.960
L173	-52	030.470	3 787	568.790	R173	-53	756.520	3 786	844.120
L174	-52	053.290	3 787	552.050	R174	-53	843.230	3 786	845.910
L175	-52	159.230	3 787	461.290	R175	-53	938.430	3 786	835.510
L176	-52	222.530	3 787	407.230	R176	-53	957.230	3 786	834.100
L177	-52	240.140	3 787	400.750	R177	-54	073.580	3 786	791.090
L178	-52	337.730	3 787	328.580	R178	-54	147.140	3 786	748.450
L179	-52	427.260	3 787	241.050	R179	-54	274.890	3 786	653.920
L180	-52	431.370	3 787	196.030	R180	-54	352.650	3 786	596.380
L181	-52	464.700	3 787	126.480	R181	-54	406.580	3 786	556.480
L182	-52	508.050	3 787	086.400	R182	-54	502.200	3 786	508.690
L183	-52	553.110	3 787	040.750	R183	-54	542.370	3 786	495.910
L184	-52	580.590	3 786	995.800	R184	-54	600.030	3 786	479.720
L185	-52	635.990	3 786	954.690	R185	-54	699.370	3 786	465.740
L186	-52	648.570	3 786	932.100	R186	-54	800.620	3 786	472.350
L187	-52	668.570	3 786	917.460	R187	-54	916.670	3 786	500.920
L188	-52	685.820	3 786	915.390	R188	-55	064.660	3 786	547.940
L189	-52	697.260	3 786	914.010	R189	-55	161.440	3 786	557.280
L190	-52	759.570	3 786	865.320	R190	-55	261.220	3 786	546.910
L191	-52	792.300	3 786	785.420	R191	-55	330.460	3 786	528.430
L192	-52	808.770	3 786	722.510	R192	-55	357.070	3 786	521.510
L193	-52	851.490	3 786	662.820	R193	-55	398.200	3 786	508.750
L194	-52	888.380	3 786	673.100	R194	-55	471.210	3 786	475.240
L195	-52	890.000	3 786	688.050	R195	-55	483.620	3 786	467.270
L196	-52	911.260	3 786	695.160	R196	-55	577.170	3 786	407.210
L197	-52	994.000	3 786	682.110	R197	-55	632.190	3 786	359.600
L198	-53	005.690	3 786	680.260	R198	-55	655.920	3 786	336.180
L199	-53	058.120	3 786	671.530	R199	-55	687.360	3 786	303.510
L200	-53	065.820	3 786	684.180	R200	-55	846.870	3 786	167.730
L201	-53	072.170	3 786	694.320	R201	-55	924.840	3 786	122.800
L202	-53	072.830	3 786	695.410	R202	-56	093.940	3 786	080.670
L203	-53	375.530	3 786	738.610	R203	-56	095.240	3 786	080.470

Vel	13	Van	19	P778/09
Sheet		of		

PADRESERWE KOÖRDINATE / ROAD RESERVE CO-ORDINATES						
LINKERKANT/LEFT HAND SIDE				REGTERKANT/RIGHT HAND SIDE		
	Y	X	WG 19°		Y	X
L204	-53 448.810	3 786	745.900	R204	-56 182.390	3 786 091.160
L205	-53 654.890	3 786	784.780	R205	-56 223.890	3 786 099.040
L206	-53 764.370	3 786	805.440	R206	-56 257.640	3 786 108.290
L207	-53 868.760	3 786	809.760	R207	-56 298.470	3 786 122.830
L208	-53 956.900	3 786	797.170	R208	-56 449.940	3 786 185.960
L209	-54 080.980	3 786	752.800	R209	-56 527.820	3 786 212.810
L210	-54 207.320	3 786	665.340	R210	-56 581.570	3 786 226.840
L211	-54 227.900	3 786	650.100	R211	-56 668.090	3 786 235.510
L212	-54 255.210	3 786	629.010	R212	-56 784.490	3 786 228.330
L213	-54 257.000	3 786	627.600	R213	-56 801.980	3 786 224.990
L214	-54 402.120	3 786	513.440	R214	-56 807.150	3 786 224.000
L215	-54 476.620	3 786	477.360	R215	-56 902.270	3 786 200.910
L216	-54 542.450	3 786	455.190	R216	-57 051.850	3 786 144.310
L217	-54 567.230	3 786	449.070	R217	-57 059.060	3 786 141.560
L218	-54 615.870	3 786	437.810	R218	-57 094.550	3 786 127.820
L219	-54 708.700	3 786	430.160	R219	-57 180.540	3 786 094.770
L220	-54 759.390	3 786	432.690	R220	-57 372.810	3 786 011.740
L221	-54 819.680	3 786	439.810	R221	-57 515.780	3 785 961.150
L222	-54 869.010	3 786	451.600	R222	-57 568.860	3 785 948.540
L223	-54 976.680	3 786	482.630	R223	-57 610.730	3 785 943.510
L224	-54 999.780	3 786	490.920	R224	-57 654.230	3 785 939.110
L225	-55 061.380	3 786	504.070	R225	-57 710.420	3 785 933.650
L226	-55 117.030	3 786	511.060	R226	-57 817.730	3 785 923.850
L227	-55 159.920	3 786	512.580	R227	-57 923.840	3 785 914.410
L228	-55 225.170	3 786	510.180	R228	-58 013.440	3 785 906.500
L229	-55 272.360	3 786	504.700	R229	-58 103.700	3 785 898.490
L230	-55 322.000	3 786	492.000	R230	-58 214.270	3 785 888.380
L231	-55 381.860	3 786	469.030	R231	-58 231.510	3 785 886.800
L232	-55 388.130	3 786	445.670	R232	-58 252.320	3 785 884.960
L233	-55 448.620	3 786	417.530	R233	-58 280.010	3 785 882.370
L234	-55 485.390	3 786	400.420	R234	-58 905.730	3 785 824.840
L235	-55 499.270	3 786	408.810	R235	-58 969.360	3 785 819.080
L236	-55 547.440	3 786	372.520	R236	-59 029.340	3 785 812.390
L237	-55 802.360	3 786	147.190	R237	-59 090.060	3 785 800.120
L238	-55 885.850	3 786	090.630	R238	-59 149.880	3 785 782.090
L239	-55 971.660	3 786	062.700	R239	-59 208.580	3 785 757.930
L240	-56 049.240	3 786	038.710	R240	-59 264.020	3 785 726.650
L241	-56 116.720	3 786	036.670	R241	-59 313.790	3 785 692.320
L242	-56 118.970	3 786	042.240	R242	-59 358.550	3 785 654.620
L243	-56 125.580	3 786	042.590	R243	-59 488.320	3 785 524.000
L244	-56 178.650	3 786	042.130	R244	-59 752.450	3 785 255.500
L245	-56 266.180	3 786	057.780	R245	-59 782.420	3 785 227.110
L246	-56 465.630	3 786	146.280	R246	-59 856.910	3 785 160.810
L247	-56 531.540	3 786	167.090	R247	-59 903.660	3 785 124.470
L248	-56 697.830	3 786	196.240	R248	-59 956.460	3 785 088.140
L249	-56 733.600	3 786	195.600	R249	-60 006.070	3 785 056.300
L250	-56 795.970	3 786	187.810	R250	-60 265.800	3 784 897.670
L251	-56 866.280	3 786	172.140	R251	-60 485.530	3 784 763.540
L252	-56 981.530	3 786	128.320	R252	-61 120.150	3 784 375.440
L253	-57 050.530	3 786	102.060	R253	-61 162.960	3 784 371.570
L254	-57 081.200	3 786	088.220	R254	-61 246.130	3 784 321.110

Vel	14	Van	19	P778/09
Sheet		of		

PADRESERWE KOÖRDINATE / ROAD RESERVE CO-ORDINATES											
LINKERKANT/LEFT HAND SIDE					REGTERKANT/RIGHT HAND SIDE						
	Y	X	WG	19°		Y	X				
L255	-57	427.750	3	785	957.730	R255	-61	228.690	3	784	308.760
L256	-57	494.120	3	785	935.000	R256	-61	501.680	3	784	141.270
L257	-57	553.570	3	785	917.520	R257	-61	557.860	3	784	107.480
L258	-57	598.340	3	785	905.340	R258	-61	620.270	3	784	082.310
L259	-57	633.430	3	785	898.740	R259	-61	698.850	3	784	061.400
L260	-57	755.240	3	785	885.910	R260	-61	746.930	3	784	059.110
L261	-57	776.080	3	785	879.470	R261	-61	810.500	3	784	061.900
L262	-57	797.520	3	785	884.340	R262	-61	863.700	3	784	071.100
L263	-57	867.970	3	785	877.100	R263	-61	956.020	3	784	098.530
L264	-58	252.500	3	785	840.080	R264	-62	570.370	3	784	297.140
L265	-58	323.500	3	785	836.150	R265	-62	655.090	3	784	325.490
L266	-58	337.040	3	785	832.220	R266	-62	757.750	3	784	354.190
L267	-58	462.020	3	785	823.220	R267	-62	834.020	3	784	365.080
L268	-58	455.850	3	785	783.350	R268	-62	915.030	3	784	366.400
L269	-58	611.710	3	785	777.120	R269	-63	001.640	3	784	354.800
L270	-58	658.420	3	785	805.370	R270	-63	076.110	3	784	335.250
L271	-58	986.390	3	785	775.490	R271	-63	144.630	3	784	307.610
L272	-59	036.990	3	785	767.960	R272	-63	416.740	3	784	178.510
L273	-59	100.250	3	785	751.940	R273	-63	476.850	3	784	155.760
L274	-59	175.890	3	785	722.830	R274	-63	531.900	3	784	142.510
L275	-59	199.080	3	785	710.910	R275	-63	589.930	3	784	136.050
L276	-59	266.430	3	785	670.480	R276	-63	649.340	3	784	137.720
L277	-59	332.640	3	785	616.120	R277	-63	705.510	3	784	147.180
L278	-59	442.260	3	785	506.700	R278	-63	761.900	3	784	163.620
L279	-59	552.910	3	785	394.890	R279	-64	456.100	3	784	453.330
L280	-59	643.100	3	785	301.850	R280	-64	521.690	3	784	476.330
L281	-59	733.940	3	785	211.300	R281	-64	580.140	3	784	492.500
L282	-59	771.960	3	785	175.020	R282	-64	595.580	3	784	495.680
L283	-59	783.860	3	785	163.550	R283	-64	669.500	3	784	509.270
L284	-59	851.440	3	785	106.960	R284	-64	729.430	3	784	514.820
L285	-59	879.440	3	785	087.120	R285	-64	791.680	3	784	517.180
L286	-59	922.450	3	785	057.070	R286	-64	915.400	3	784	508.890
L287	-59	987.050	3	785	016.430	R287	-65	036.030	3	784	493.060
L288	-60	107.660	3	784	942.500	R288	-65	579.380	3	784	424.880
L289	-60	248.200	3	784	856.550	R289	-66	151.320	3	784	351.780
L290	-60	446.870	3	784	735.120	R290	-66	161.590	3	784	350.440
L291	-60	460.550	3	784	726.720	R291	-66	181.950	3	784	348.010
L292	-60	462.910	3	784	720.280	R292	-66	761.560	3	784	274.560
L293	-60	470.600	3	784	720.690	R293	-67	523.110	3	784	177.840
L294	-60	494.710	3	784	707.750	R294	-68	485.700	3	784	055.590
L295	-61	036.530	3	784	377.100	R295	-68	630.420	3	784	037.210
L296	-61	191.670	3	784	282.540	R296	-68	709.150	3	784	021.280
L297	-61	253.520	3	784	243.210	R297	-68	785.260	3	783	994.140
L298	-61	341.830	3	784	188.580	R298	-68	857.260	3	783	958.300
L299	-61	350.190	3	784	185.870	R299	-68	919.700	3	783	915.470
L300	-61	375.960	3	784	165.150	R300	-69	379.710	3	783	562.030
L301	-61	456.000	3	784	109.290	R301	-69	680.210	3	783	331.130
L302	-61	519.580	3	784	071.040	R302	-69	939.930	3	783	131.580
L303	-61	569.190	3	784	050.420	R303	-69	990.270	3	783	092.750
L304	-61	643.400	3	784	028.460	R304	-70	045.490	3	783	057.210
L305	-61	724.020	3	784	016.260	R305	-70	100.910	3	783	031.130

Vel Sheet	15	Van of	19	P778/09
--------------	----	-----------	----	---------

PADRESERWE KOÖRDINATE / ROAD RESERVE CO-ORDINATES						
LINKERKANT/LEFT HAND SIDE				REGTERKANT/RIGHT HAND SIDE		
	Y	X	WG 19°		Y	X
L306	-61 778.490	3 784	015.520	R306	-70 136.710	3 783 018.990
L307	-61 831.410	3 784	021.300	R307	-70 144.250	3 783 017.550
L308	-61 901.850	3 784	035.160	R308	-70 215.060	3 783 003.380
L309	-61 997.550	3 784	066.290	R309	-70 274.400	3 783 001.740
L310	-62 099.920	3 784	099.820	R310	-70 333.280	3 783 006.300
L311	-62 241.780	3 784	145.800	R311	-70 366.400	3 783 013.030
L312	-62 558.090	3 784	247.420	R312	-70 465.070	3 783 036.100
L313	-62 573.410	3 784	252.360	R313	-70 721.990	3 783 097.420
L314	-62 589.660	3 784	247.520	R314	-70 792.910	3 783 114.350
L315	-62 594.290	3 784	259.070	R315	-70 819.500	3 783 122.560
L316	-62 669.040	3 784	281.960	R316	-70 862.020	3 783 137.690
L317	-62 672.600	3 784	289.070	R317	-70 918.790	3 783 166.520
L318	-62 697.910	3 784	295.930	R318	-70 965.300	3 783 198.550
L319	-62 703.120	3 784	292.670	R319	-71 005.440	3 783 233.740
L320	-62 724.470	3 784	301.830	R320	-71 061.760	3 783 290.720
L321	-62 744.980	3 784	307.700	R321	-71 094.420	3 783 321.200
L322	-62 752.200	3 784	309.860	R322	-71 137.260	3 783 355.640
L323	-62 798.580	3 784	319.410	R323	-71 171.460	3 783 376.560
L324	-62 850.780	3 784	325.890	R324	-71 214.510	3 783 397.880
L325	-62 908.730	3 784	326.520	R325	-71 228.970	3 783 405.040
L326	-62 967.220	3 784	320.810	R326	-71 282.280	3 783 423.850
L327	-63 023.320	3 784	307.080	R327	-71 346.630	3 783 435.170
L328	-63 077.730	3 784	286.910	R328	-71 490.980	3 783 447.880
L329	-63 130.530	3 784	265.300	R329	-71 538.720	3 783 450.880
L330	-63 199.790	3 784	226.650	R330	-71 638.790	3 783 445.840
L331	-63 212.030	3 784	221.350	R331	-71 710.220	3 783 435.110
L332	-63 277.680	3 784	195.200	R332	-71 793.590	3 783 415.630
L333	-63 388.780	3 784	145.240	R333	-71 847.980	3 783 398.120
L334	-63 432.980	3 784	128.300	R334	-72 178.870	3 783 282.530
L335	-63 440.420	3 784	118.940	R335	-73 483.150	3 782 827.890
L336	-63 447.650	3 784	122.870	R336	-73 648.280	3 782 777.140
L337	-63 482.460	3 784	109.800	R337	-74 012.110	3 782 705.020
L338	-63 542.780	3 784	096.890	R338	-74 869.250	3 782 540.860
L339	-63 604.350	3 784	092.550	R339	-75 147.520	3 782 487.180
L340	-63 666.520	3 784	095.890	R340	-75 413.010	3 782 435.960
L341	-63 727.420	3 784	107.970	R341	-76 188.640	3 782 287.770
L342	-63 784.810	3 784	126.230	R342	-77 105.670	3 782 110.250
L343	-64 011.310	3 784	221.560	R343	-77 268.770	3 782 081.390
L344	-64 167.850	3 784	283.320	R344	-77 324.220	3 782 068.010
L345	-64 250.190	3 784	320.660	R345	-77 497.550	3 782 034.690
L346	-64 253.920	3 784	311.510	R346	-77 938.960	3 781 949.830
L347	-64 268.520	3 784	324.040	R347	-77 985.760	3 781 940.830
L348	-64 305.920	3 784	341.840	R348	-78 019.520	3 781 945.190
L349	-64 378.330	3 784	370.110	R349	-78 033.770	3 781 942.520
L350	-64 437.360	3 784	399.880	R350	-78 097.170	3 781 930.640
L351	-64 572.890	3 784	443.520	R351	-78 135.620	3 781 911.830
L352	-64 611.650	3 784	451.900	R352	-78 733.890	3 781 796.670
L353	-64 663.530	3 784	461.280	R353	-79 149.550	3 781 716.660
L354	-64 731.090	3 784	468.730	R354	-79 277.000	3 781 692.110
L355	-64 791.570	3 784	471.190	R355	-79 372.120	3 781 673.810
L356	-64 846.240	3 784	470.770	R356	-79 380.710	3 781 672.160

Vel	16	Van	19	P778/09
Sheet		of		

PADRESERWE KOÖRDINATE / ROAD RESERVE CO-ORDINATES						
LINKERKANT/LEFT HAND SIDE				REGTERKANT/RIGHT HAND SIDE		
	Y	X	WG 19°		Y	X
L357	-64 853.780	3 784	470.070	R357	-79 653.260	3 781 619.720
L358	-64 906.260	3 784	462.340	R358	-80 123.830	3 781 529.190
L359	-65 037.270	3 784	445.020	R359	-80 662.980	3 781 425.460
L360	-65 116.600	3 784	432.570	R360	-81 229.940	3 781 316.380
L361	-65 190.430	3 784	427.790	R361	-81 824.910	3 781 201.910
L362	-65 429.280	3 784	397.360	R362	-81 939.350	3 781 179.890
L363	-65 534.830	3 784	383.740	R363	-82 887.630	3 780 997.440
L364	-65 577.300	3 784	378.360	R364	-83 320.350	3 780 914.180
L365	-65 667.840	3 784	368.420	R365	-83 369.490	3 780 898.130
L366	-65 929.590	3 784	336.880	R366	-83 428.840	3 780 867.220
L367	-65 937.590	3 784	328.060	R367	-83 435.190	3 780 863.910
L368	-65 944.320	3 784	335.270	R368	-83 462.120	3 780 845.430
L369	-66 026.080	3 784	323.250	R369	-83 474.220	3 780 836.610
L370	-66 106.020	3 784	308.330	R370	-83 480.040	3 780 832.360
L371	-66 139.250	3 784	307.640	R371	-83 566.450	3 780 755.130
L372	-66 162.620	3 784	307.150	R372	-83 638.550	3 780 701.880
L373	-66 201.920	3 784	301.180	R373	-83 670.600	3 780 683.060
L374	-66 278.140	3 784	288.120	R374	-83 707.180	3 780 667.570
L375	-66 354.590	3 784	278.820	R375	-83 742.250	3 780 659.470
L376	-66 440.980	3 784	270.480	R376	-83 840.900	3 780 652.130
L377	-66 480.830	3 784	266.070	R377	-83 840.620	3 780 648.490
L378	-66 657.970	3 784	242.670	R378	-83 847.250	3 780 649.350
L379	-66 680.160	3 784	240.960	R379	-84 332.580	3 780 733.460
L380	-66 700.130	3 784	241.860	R380	-84 831.130	3 780 819.950
L381	-66 769.030	3 784	228.090	R381	-84 842.070	3 780 822.170
L382	-66 799.510	3 784	216.690	R382	-84 856.790	3 780 826.000
L383	-66 865.820	3 784	209.030	R383	-84 869.840	3 780 830.890
L384	-66 942.220	3 784	209.750	R384	-84 892.620	3 780 840.010
L385	-67 008.560	3 784	197.790	R385	-84 890.310	3 780 844.960
L386	-67 104.210	3 784	185.340	R386	-84 912.940	3 780 856.320
L387	-67 350.510	3 784	153.620	R387	-84 939.570	3 780 874.290
L388	-67 495.070	3 784	134.900	R388	-85 119.070	3 781 031.350
L389	-67 531.260	3 784	130.740			
L390	-67 708.750	3 784	110.350			
L391	-67 852.140	3 784	092.340			
L392	-67 985.950	3 784	075.050			
L393	-68 131.720	3 784	056.320			
L394	-68 138.100	3 784	050.810			
L395	-68 159.400	3 783	991.370			
L396	-68 167.750	3 783	993.870			
L397	-68 251.490	3 783	995.310			
L398	-68 296.690	3 784	019.420			
L399	-68 335.130	3 784	031.610			
L400	-68 476.750	3 784	009.530			
L401	-68 526.360	3 784	001.800			
L402	-68 626.140	3 783	992.220			
L403	-68 718.850	3 783	972.460			
L404	-68 759.200	3 783	957.240			
L405	-68 807.330	3 783	934.700			
L406	-68 848.530	3 783	912.270			
L407	-68 880.220	3 783	891.790			

Vel Sheet	17	Van of	19	P778/09
--------------	----	-----------	----	---------

PADRESERWE KOÖRDINATE / ROAD RESERVE CO-ORDINATES									
LINKERKANT/LEFT HAND SIDE				REGTERKANT/RIGHT HAND SIDE					
	Y	X	WG 19°		Y	X			
L408	-68	930.950	3 783	854.330	L459	-72	827.040	3 783	013.050
L409	-69	041.530	3 783	765.030	L460	-72	921.600	3 782	979.100
L410	-69	142.320	3 783	686.520	L461	-73	017.750	3 782	946.650
L411	-69	241.830	3 783	616.920	L462	-73	435.440	3 782	800.990
L412	-69	660.250	3 783	293.580	L463	-73	528.860	3 782	765.480
L413	-69	956.400	3 783	064.720	L464	-73	598.840	3 782	741.780
L414	-70	006.150	3 783	030.500	L465	-73	702.120	3 782	717.060
L415	-70	049.740	3 783	006.420	L466	-73	961.010	3 782	671.460
L416	-70	085.100	3 782	991.610	L467	-73	964.760	3 782	664.590
L417	-70	114.270	3 782	981.020	L468	-73	987.900	3 782	660.840
L418	-70	134.990	3 782	974.210	L469	-74	148.250	3 782	633.300
L419	-70	175.130	3 782	964.620	L470	-74	158.120	3 782	632.280
L420	-70	229.440	3 782	957.460	L471	-74	191.800	3 782	626.460
L421	-70	277.260	3 782	955.630	L472	-74	870.160	3 782	495.680
L422	-70	319.450	3 782	957.180	L473	-75	031.730	3 782	461.230
L423	-70	383.640	3 782	968.930	L474	-75	155.780	3 782	439.800
L424	-70	433.000	3 782	983.760	L475	-75	167.960	3 782	437.700
L425	-70	499.060	3 783	009.520	L476	-75	630.770	3 782	347.980
L426	-70	720.310	3 783	056.680	L477	-75	660.080	3 782	344.610
L427	-70	751.670	3 783	061.020	L478	-75	762.300	3 782	324.830
L428	-70	816.350	3 783	070.120	L479	-75	818.520	3 782	312.550
L429	-70	858.590	3 783	090.140	L480	-75	884.030	3 782	296.910
L430	-70	902.220	3 783	106.580	L481	-75	969.460	3 782	284.570
L431	-70	941.830	3 783	129.180	L482	-76	031.320	3 782	270.600
L432	-70	986.120	3 783	160.100	L483	-76	059.060	3 782	265.900
L433	-71	113.970	3 783	259.420	L484	-76	120.490	3 782	255.270
L434	-71	186.670	3 783	302.030	L485	-76	173.370	3 782	245.020
L435	-71	214.480	3 783	323.820	L486	-76	379.480	3 782	205.060
L436	-71	271.770	3 783	349.700	L487	-76	449.020	3 782	191.490
L437	-71	328.610	3 783	369.850	L488	-76	543.710	3 782	170.850
L438	-71	363.000	3 783	382.040	L489	-76	600.530	3 782	160.110
L439	-71	400.800	3 783	389.400	L490	-76	684.030	3 782	145.890
L440	-71	462.330	3 783	395.480	L491	-76	764.840	3 782	131.080
L441	-71	498.500	3 783	404.500	L492	-76	824.420	3 782	119.360
L442	-71	582.870	3 783	408.780	L493	-76	931.460	3 782	090.790
L443	-71	605.300	3 783	399.370	L494	-76	999.710	3 782	078.340
L444	-71	609.200	3 783	407.970	L495	-77	110.790	3 782	062.200
L445	-71	679.420	3 783	400.170	L496	-77	119.770	3 782	060.900
L446	-71	737.570	3 783	388.110	L497	-77	236.800	3 782	034.500
L447	-71	789.430	3 783	372.980	L498	-77	372.120	3 782	013.050
L448	-71	916.980	3 783	326.330	L499	-77	485.900	3 781	991.320
L449	-71	970.250	3 783	304.460	L500	-77	897.070	3 781	912.800
L450	-72	071.140	3 783	265.600	L501	-78	064.420	3 781	880.450
L451	-72	172.650	3 783	231.760	L502	-78	079.020	3 781	877.080
L452	-72	173.510	3 783	231.470	L503	-78	215.840	3 781	852.120
L453	-72	280.910	3 783	200.100	L504	-78	241.380	3 781	838.400
L454	-72	368.320	3 783	170.790	L505	-78	297.220	3 781	830.650
L455	-72	443.600	3 783	144.700	L506	-78	327.670	3 781	830.250
L456	-72	530.910	3 783	105.630	L507	-78	371.310	3 781	822.160
L457	-72	592.490	3 783	084.460	L508	-78	411.710	3 781	814.430
L458	-72	664.080	3 783	067.650	L509	-78	758.560	3 781	748.370

Vel	18	Van	19	P778/09
Sheet		of		

PADRESERWE KOÖRDINATE / ROAD RESERVE CO-ORDINATES						
LINKERKANT/LEFT HAND SIDE				REGTERKANT/RIGHT HAND SIDE		
	Y	X	WG 19°		Y	X
L510	-79 000.410	3 781 702.300		L561	-84 834.170	3 780 803.500
L511	-79 369.950	3 781 628.700		L562	-84 853.830	3 780 809.210
L512	-79 390.710	3 781 626.240		L563	-84 869.110	3 780 814.230
L513	-79 396.360	3 781 625.580		L564	-84 887.360	3 780 821.500
L514	-79 662.340	3 781 573.720		L565	-84 904.020	3 780 829.020
L515	-79 830.140	3 781 541.000		L566	-84 920.270	3 780 837.470
L516	-79 830.360	3 781 539.930		L567	-84 924.220	3 780 814.770
L517	-79 839.790	3 781 539.190		L568	-85 116.880	3 780 986.560
L518	-80 129.860	3 781 482.910				
L519	-80 296.780	3 781 450.530				
L520	-80 427.900	3 781 424.610				
L521	-80 671.010	3 781 377.770				
L522	-80 760.950	3 781 360.450				
L523	-80 762.310	3 781 360.160				
L524	-80 851.140	3 781 331.320				
L525	-80 861.780	3 781 329.250				
L526	-80 987.410	3 781 315.580				
L527	-81 085.200	3 781 296.280				
L528	-81 239.040	3 781 270.010				
L529	-81 757.840	3 781 170.800				
L530	-81 778.780	3 781 166.770				
L531	-81 798.080	3 781 163.060				
L532	-81 799.030	3 781 163.130				
L533	-81 807.470	3 781 162.210				
L534	-82 061.510	3 781 113.130				
L535	-82 571.440	3 781 014.620				
L536	-82 618.970	3 781 005.440				
L537	-82 853.660	3 780 960.100				
L538	-82 861.170	3 780 946.690				
L539	-82 873.610	3 780 952.820				
L540	-82 874.850	3 780 953.680				
L541	-83 028.040	3 780 924.630				
L542	-83 227.180	3 780 886.350				
L543	-83 356.320	3 780 854.300				
L544	-83 359.040	3 780 853.620				
L545	-83 441.770	3 780 811.590				
L546	-83 466.350	3 780 798.780				
L547	-83 471.410	3 780 796.150				
L548	-83 478.000	3 780 792.520				
L549	-83 478.170	3 780 791.640				
L550	-83 520.720	3 780 754.450				
L551	-83 569.650	3 780 709.230				
L552	-83 618.170	3 780 671.840				
L553	-83 642.440	3 780 656.790				
L554	-83 643.390	3 780 656.270				
L555	-83 710.100	3 780 629.910				
L556	-83 838.470	3 780 621.010				
L557	-83 839.250	3 780 630.960				
L558	-83 857.470	3 780 633.860				
L559	-84 336.450	3 780 716.910				
L560	-84 820.900	3 780 800.720				

Vel 19 Van 19  
Sheet of

P778/09

Printed by and obtainable from the Government Printer, Bosman Street, Private Bag X85, Pretoria, 0001  
Publications: Tel: (012) 334-4508, 334-4509, 334-4510  
Advertisements: Tel: (012) 334-4673, 334-4674, 334-4504  
Subscriptions: Tel: (012) 334-4735, 334-4736, 334-4737  
Cape Town Branch: Tel: (021) 465-7531

Gedruk deur en verkrygbaar by die Staatsdrukker, Bosmanstraat, Privaatsak X85, Pretoria, 0001  
Publikasies: Tel: (012) 334-4508, 334-4509, 334-4510  
Advertensies: Tel: (012) 334-4673, 334-4674, 334-4504  
Subskripsies: Tel: (012) 334-4735, 334-4736, 334-4737  
Kaapstad-tak: Tel: (021) 465-7531