



Government Gazette Staatskoerant

REPUBLIC OF SOUTH AFRICA
REPUBLIEK VAN SUID-AFRIKA

Vol. 570

Pretoria, 11 December 2012
Desember

No. 35969

N.B. The Government Printing Works will not be held responsible for the quality of "Hard Copies" or "Electronic Files" submitted for publication purposes



AIDS HELPLINE: 0800-0123-22 Prevention is the cure

IMPORTANT NOTICE

The Government Printing Works will not be held responsible for faxed documents not received due to errors on the fax machine or faxes received which are unclear or incomplete. Please be advised that an "OK" slip, received from a fax machine, will not be accepted as proof that documents were received by the GPW for printing. If documents are faxed to the GPW it will be the sender's responsibility to phone and confirm that the documents were received in good order.

Furthermore the Government Printing Works will also not be held responsible for cancellations and amendments which have not been done on original documents received from clients.

CONTENTS**INHOUD**

<i>No.</i>	<i>Page No.</i>	<i>Gazette No.</i>	<i>No.</i>	<i>Bladsy No.</i>	<i>Koerant No.</i>
GOVERNMENT NOTICE			GOEWERMENTSKENNISGEWING		
Transport, Department of			Vervoer, Departement van		
<i>Government Notice</i>			<i>Goewermentskennisgewing</i>		
1039		South African National Roads Agency Limited and the National Roads Act (7/1998): Declaration amendment of National Road R38 Section 3	3	35969	
			1039		Suid-Afrikaanse Nasionale Padagentskap Beperk en die Nasionale Paaie Wet (7/1998): Verklaring wysiging van Nasionale Pad R38 Seksie 3
				4	35969

GOVERNMENT NOTICE

DEPARTMENT OF TRANSPORT

No. 1039

11 December 2012

THE SOUTH AFRICAN NATIONAL ROADS AGENCY SOC LIMITED

Registration No: 98/09584/06

DECLARATION AMENDMENT OF NATIONAL ROAD R38 SECTION 3

AMENDMENT OF DECLARATION NO. 176 OF 2007.

By virtue of section 40(1)(b) of The South African National Roads Agency Limited and National Roads Act, 1998 (Act No. 7 of 1998), I hereby amend Declaration No. 176 of 2007 by substituting Annexure paragraphs (II) and (III), with the subjoined sheets 1 to 10 of Plan No. P792/10.

(National Road R38 Section 3: Hendrina - Carolina)



MINISTER OF TRANSPORT

GOEWERMENTSKENNISGEWING

DEPARTEMENT VAN VERVOER

No. 1039

11 Desember 2012

DIE SUID-AFRIKAANSE NASIONALE PADAGENTSKAP SBM BEPERK

Registrasie No: 98/09584/06

VERKLARING WYSIGING VAN NASIONALE PAD R38 SEKSIE 3

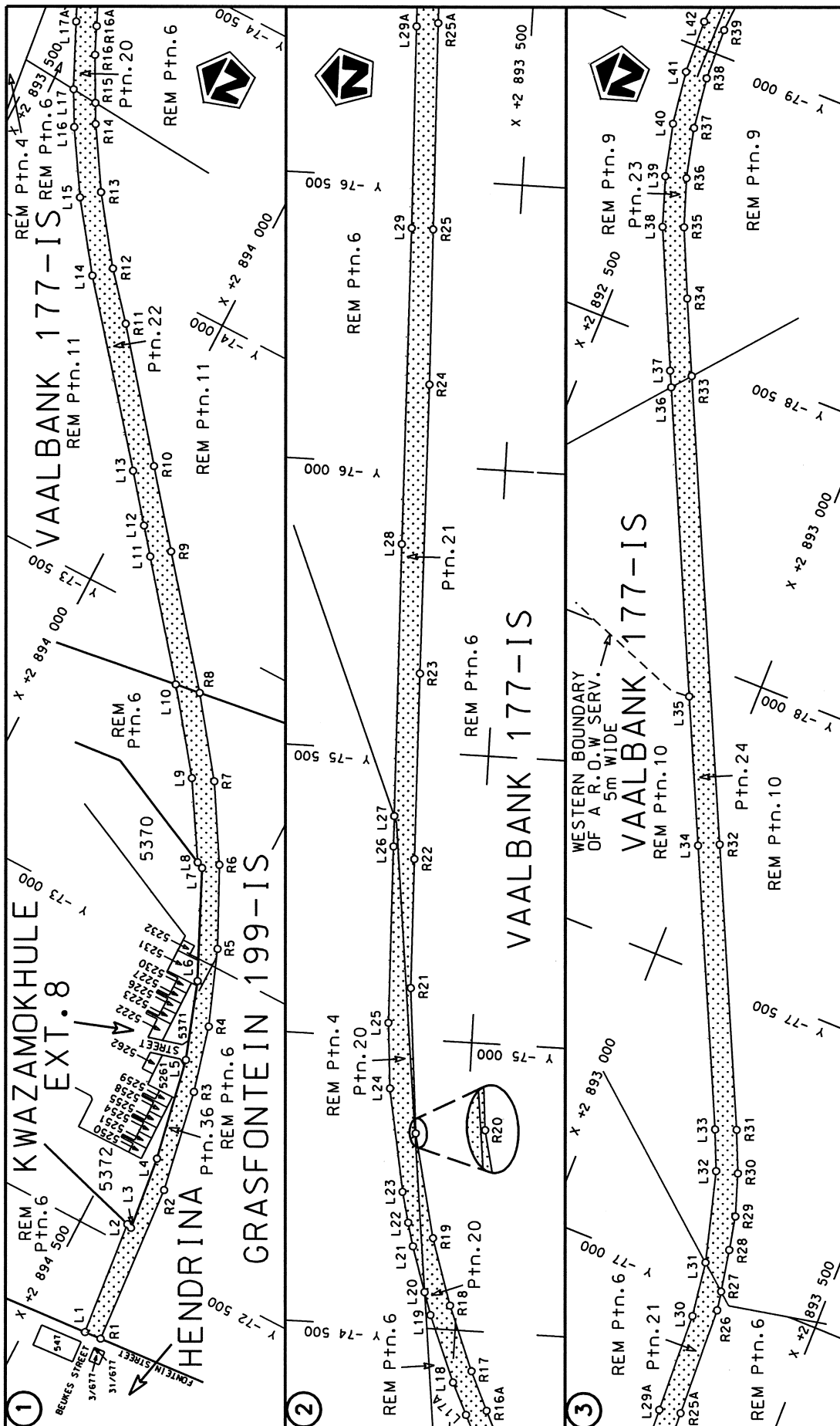
WYSIGING VAN VERKLARING NO. 176 VAN 2007

Kragtens Artikel 40(1)(b) van die Wet op die Suid Afrikaanse Nasionale Padagentskap Beperk en op Nasionale Paaie, 1998 (Wet no.7 van 1998), wysig ek hiermee Verklaring no. 176 van 2007 deur Bylae paragraaf (II) en (III), te vervang met meegaande velle 1 tot 10 van Plan no. P792/10.

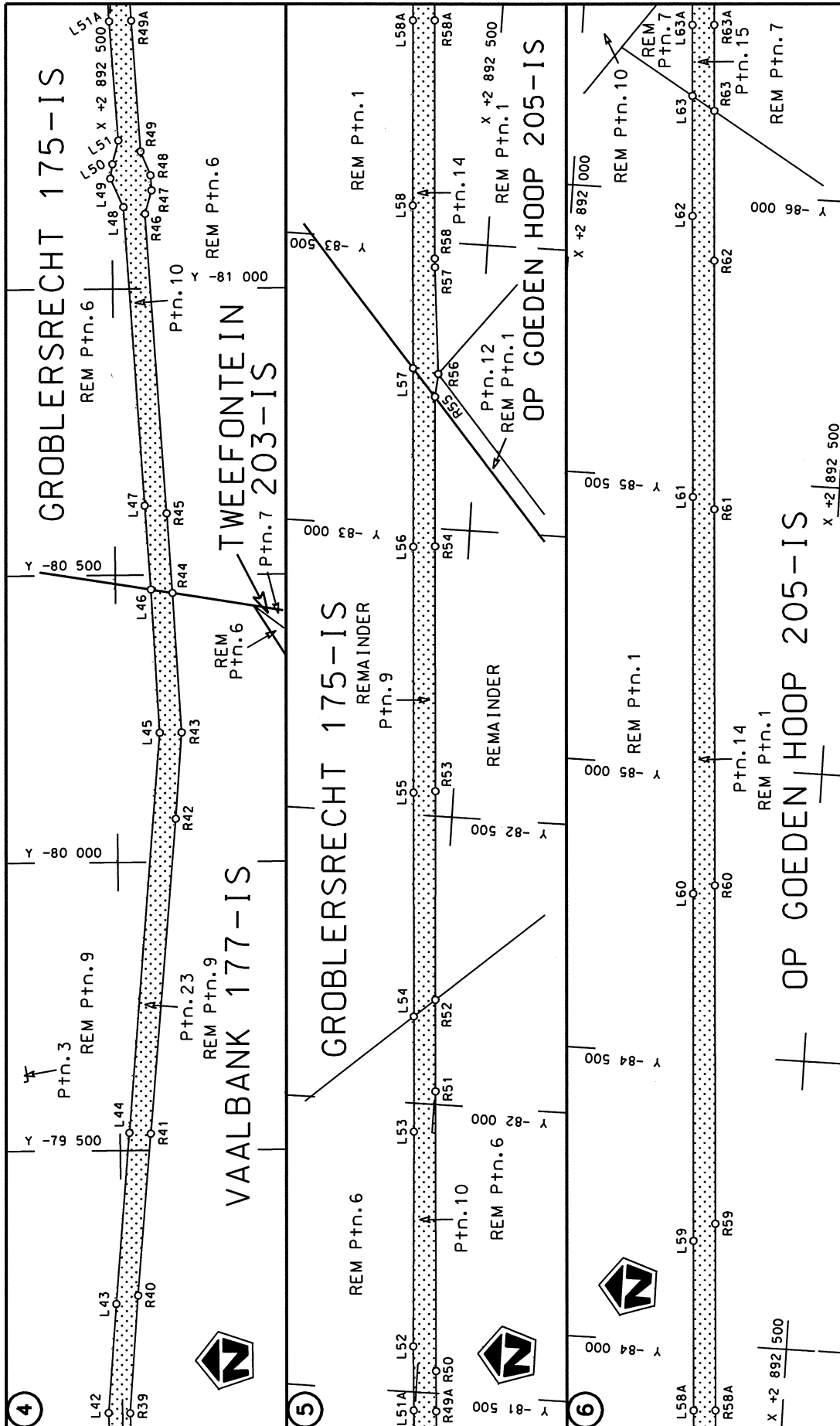
(Nasionale Pad R38 Seksie 3: Hendrina – Carolina)

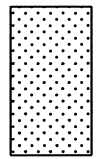


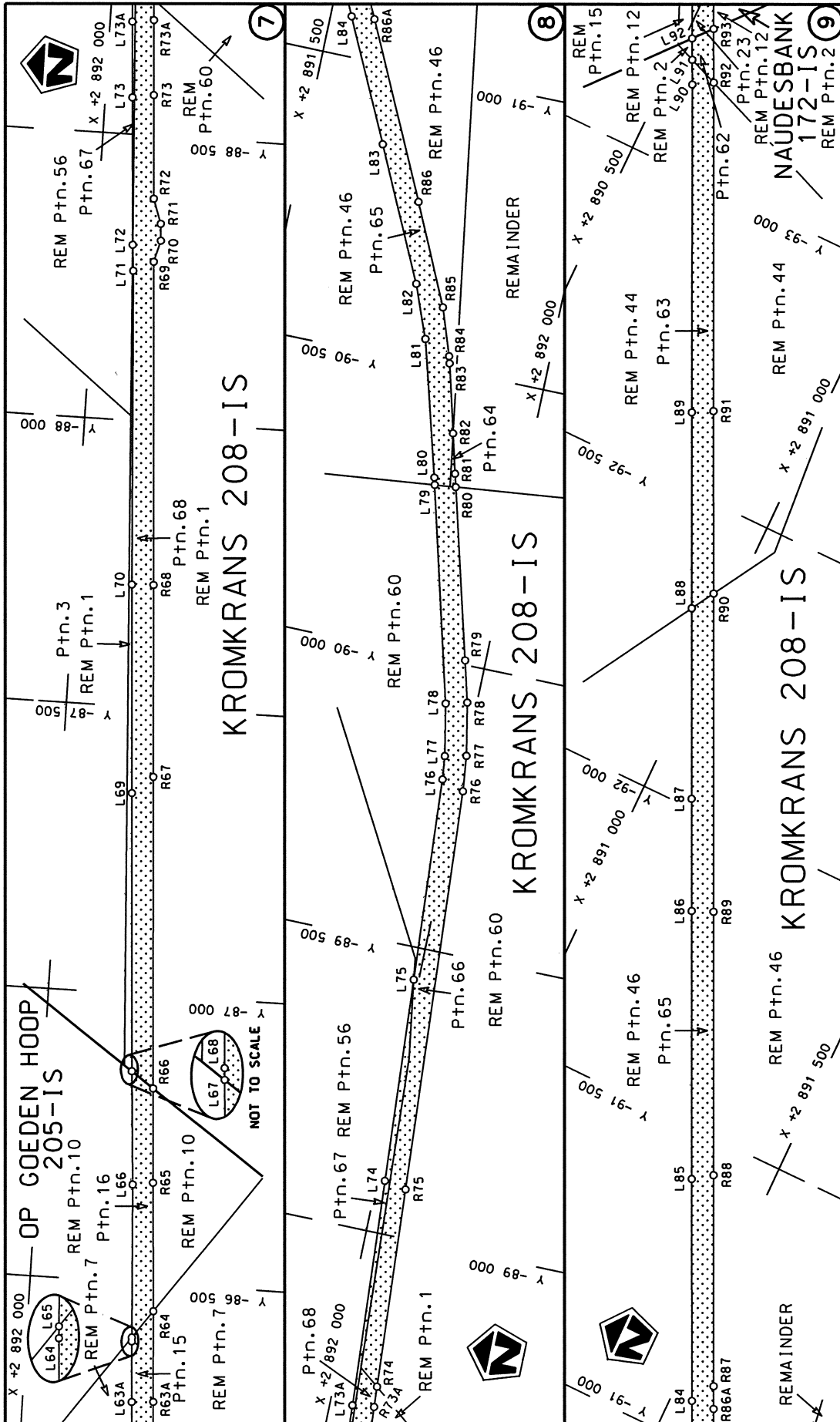
MINISTER VAN VERVOER



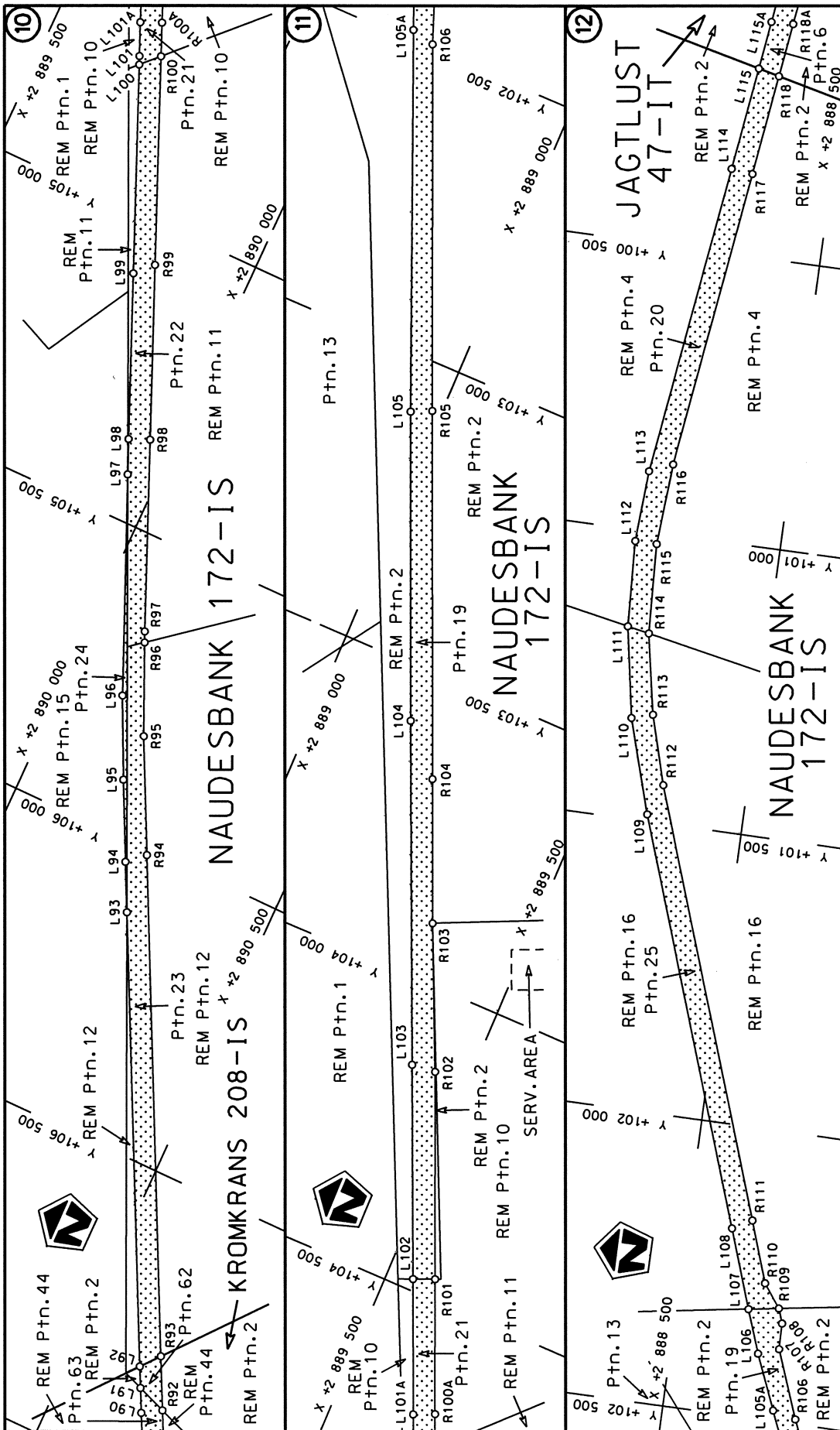
<p>Die Suid Afrikaanse Nasionale Padagentskap Beperk The South African National Roads Agency Limited</p>	<p>Die figuur getoon The figure shown</p>	<p>steldie padreserwe voor van 'n gedeelte represents the road reserve of a portion van Nasionale Roete R38 Seksie 3 of National Route Section</p>	<p>Vel Sheet 1 of 10</p>
<p>Plan P792/10</p>			<p>3</p>



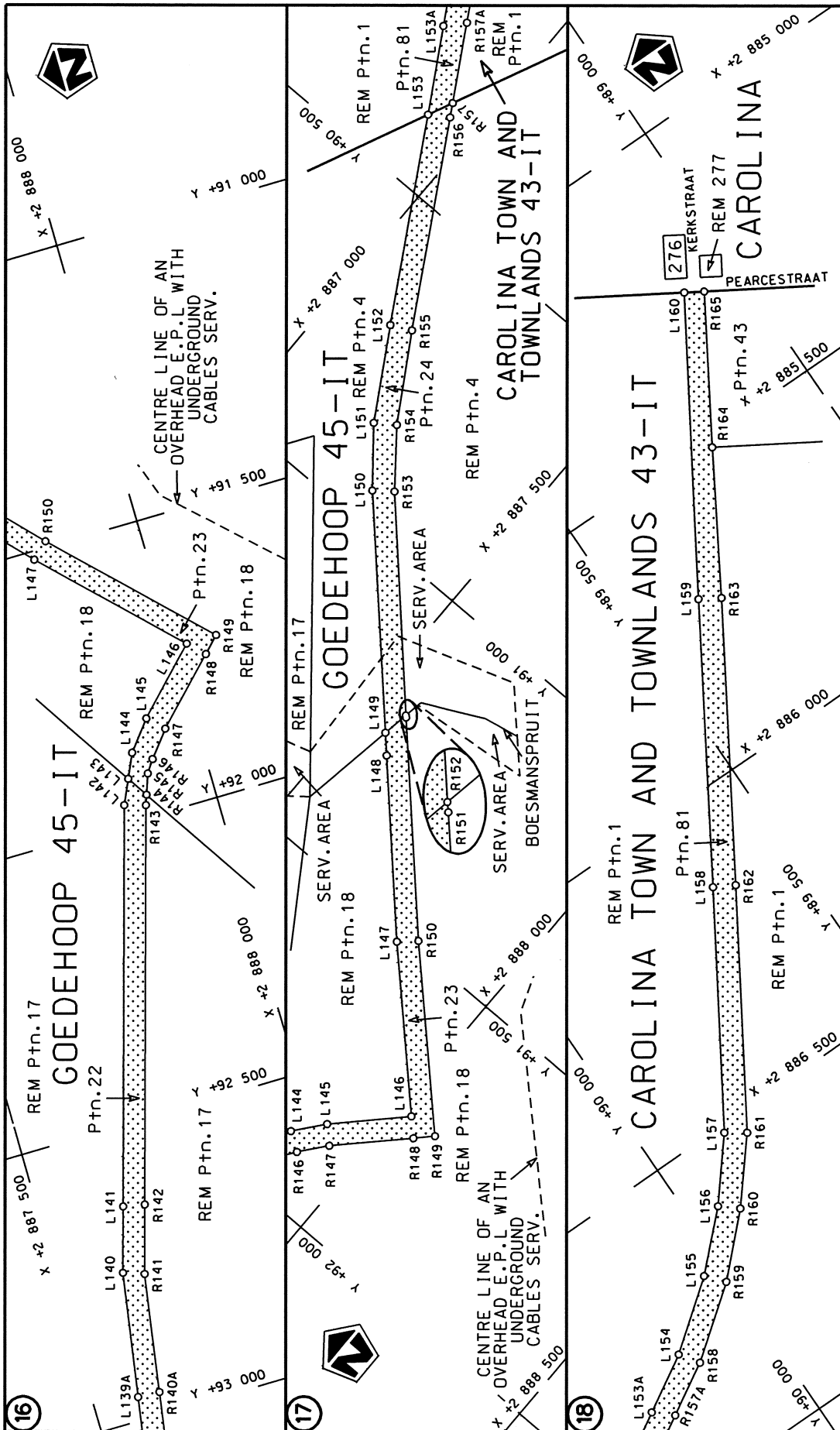
<p>Die Suid Afrikaanse Nasionale Padagentskap Beperk The South African National Roads Agency Limited</p>	<p>Die figuur getoon The figure shown</p>  <p>stelt die padreserwe voor van 'n gedeelte represents the road reserve of a portion van Nasionale Roete R38 of National Route R38</p> <p>Seksie Section</p>	<p>Vel Sheet</p> <p>2 of</p> <p>10</p> <p>Plan P792/10</p>
--	---	--



<p>Die Suid Afrikaanse Nasionale Padogentskap Beperk The South African National Roads Agency Limited</p>	<p>Die figuur getoon The figure shown</p>	<p>steldie padreserwe voor van 'n gedeelte represents the road reserve of a portion van Nasionale Roete R38 Seksie R38 Section</p>	<p>Vel Sheet 3 of 10 Plan P792/10</p>
--	---	--	---



Die Suid Afrikaanse Nasionale Padagentskap Beperk The South African National Roads Agency Limited	Die figuur getoon The figure shown	steldie padreserwe voor van 'n gedeelte represents the road reserve of a portion van Nasionale Roete R38 of National Route R38 Section	Vel Sheet 4 of 10 Plan P792/10
--	---------------------------------------	---	--------------------------------------



<p>Die Suid Afrikaanse Nasionale Padogentskap Beperk The South African National Roads Agency Limited</p>	<p>Die figuur getoon The figure shown</p>	<p>steldie padreserwe voor van 'n gedeelte represents the road reserve of a portion van Nasionale Roete R38 Sektie 3 of National Route Section</p>	<p>Vel Sheet 6 of 10 Plan P792/10</p>
--	---	--	---

PADRESERWE KOÖRDINATE				/	ROAD RESERVE CO-ORDINATES			
LINKERKANT/LEFT HAND SIDE					REGTERKANT/RIGHT HAND SIDE			
	Y	X	WG	29°	Y	X		
L1	-72 332.96	2 894	596.40	R1	-72 335.28	2 894	625.70	
L2	-72 533.44	2 894	575.19	R2	-72 615.97	2 894	605.41	
L3	-72 530.85	2 894	584.10	R3	-72 791.01	2 894	572.84	
L4	-72 658.48	2 894	569.25	R4	-72 903.41	2 894	543.33	
L5	-72 833.79	2 894	534.82	R5	-73 030.36	2 894	494.62	
L6	-72 964.69	2 894	489.62	R6	-73 161.92	2 894	430.00	
L7	-73 143.02	2 894	405.84	R7	-73 286.83	2 894	354.79	
L8	-73 148.30	2 894	394.54	R8	-73 412.03	2 894	261.22	
L9	-73 273.91	2 894	317.82	R9	-73 608.18	2 894	103.33	
L10	-73 405.79	2 894	217.58	R10	-73 727.01	2 894	007.80	
L11	-73 583.48	2 894	074.83	R11	-73 925.13	2 893	848.61	
L12	-73 626.37	2 894	040.16	R12	-74 000.22	2 893	783.98	
L13	-73 702.81	2 893	978.86	R13	-74 109.16	2 893	704.11	
L14	-73 972.95	2 893	758.04	R14	-74 210.71	2 893	640.71	
L15	-74 084.25	2 893	675.75	R15	-74 243.42	2 893	623.28	
L16	-74 188.71	2 893	610.02	R16	-74 317.53	2 893	583.87	
L17	-74 246.82	2 893	578.30	R17	-74 430.57	2 893	532.80	
L18	-74 409.14	2 893	501.74	R18	-74 542.39	2 893	488.69	
L19	-74 523.82	2 893	455.85	R19	-74 657.49	2 893	452.43	
L20	-74 563.00	2 893	443.14	R20	-74 837.33	2 893	411.72	
L21	-74 641.38	2 893	418.33	R21	-75 088.61	2 893	388.46	
L22	-74 681.83	2 893	407.82	R22	-75 313.32	2 893	381.55	
L23	-74 734.72	2 893	394.83	R23	-75 636.57	2 893	372.27	
L24	-74 912.57	2 893	362.19	R24	-76 142.40	2 893	358.95	
L25	-75 026.11	2 893	352.84	R25	-76 413.62	2 893	349.46	
L26	-75 333.12	2 893	343.68	R26	-76 964.89	2 893	329.82	
L27	-75 386.16	2 893	342.04	R27	-76 997.72	2 893	324.16	
L28	-75 860.59	2 893	327.34	R28	-77 070.14	2 893	310.63	
L29	-76 413.60	2 893	311.99	R29	-77 128.10	2 893	298.92	
L30	-76 939.67	2 893	293.24	R30	-77 199.17	2 893	275.26	
L31	-77 034.48	2 893	280.08	R31	-77 268.65	2 893	245.28	
L32	-77 189.03	2 893	238.40	R32	-77 718.77	2 893	033.88	
L33	-77 255.32	2 893	209.89	R33	-78 460.81	2 892	685.20	
L34	-77 702.99	2 892	999.49	R34	-78 583.97	2 892	627.53	
L35	-77 938.57	2 892	888.87	R35	-78 697.44	2 892	576.09	
L36	-78 429.21	2 892	658.89	R36	-78 778.69	2 892	548.30	
L37	-78 455.51	2 892	646.40	R37	-78 865.30	2 892	527.82	
L38	-78 684.12	2 892	540.84	R38	-78 954.32	2 892	516.09	
L39	-78 768.17	2 892	512.32	R39	-79 043.97	2 892	513.26	
L40	-78 858.59	2 892	490.63	R40	-79 248.38	2 892	529.09	
L41	-78 951.29	2 892	478.32	R41	-79 528.96	2 892	554.02	
L42	-79 044.71	2 892	475.36	R42	-80 075.25	2 892	602.47	
L43	-79 234.27	2 892	490.60	R43	-80 225.40	2 892	614.04	
L44	-79 530.50	2 892	516.32	R44	-80 468.55	2 892	600.33	
L45	-80 225.16	2 892	575.84	R45	-80 607.53	2 892	591.52	
L46	-80 474.64	2 892	562.85	R46	-81 130.97	2 892	558.22	
L47	-80 621.42	2 892	553.21	R47	-81 171.95	2 892	570.11	
L48	-81 143.10	2 892	520.23	R48	-81 198.41	2 892	568.38	
L49	-81 193.18	2 892	497.72	R49	-81 240.10	2 892	551.36	
L50	-81 218.09	2 892	501.62	R50	-81 538.75	2 892	532.38	
L51	-81 259.56	2 892	512.34	R51	-82 022.80	2 892	501.18	
				Vel	7	Van	10	P792/10
				Sheet		of		

PADRESERWE KOÖRDINATE				/	ROAD RESERVE CO-ORDINATES			
LINKERKANT/LEFT HAND SIDE					REGTERKANT/RIGHT HAND SIDE			
	Y	X	WG	31°	Y	X		
L98	105 364.65	2 889 924.05		R98	105 349.94	2 889 958.99		
L99	105 098.73	2 889 810.54		R99	105 069.49	2 889 839.02		
L100	104 763.87	2 889 667.32		R100	104 734.53	2 889 696.00		
L101	104 750.18	2 889 661.46		R101	104 465.19	2 889 581.17		
L102	104 479.97	2 889 545.67		R102	104 135.11	2 889 440.31		
L103	104 139.66	2 889 398.77		R103	103 899.89	2 889 335.17		
L104	103 591.34	2 889 162.00		R104	103 669.56	2 889 236.57		
L105	103 095.68	2 888 949.97		R105	103 079.69	2 888 984.16		
L106	102 387.16	2 888 652.79		R106	102 491.52	2 888 732.78		
L107	102 313.00	2 888 625.67		R107	102 374.54	2 888 688.24		
L108	102 178.32	2 888 577.90		R108	102 329.75	2 888 687.24		
L109	101 487.70	2 888 332.82		R109	102 304.59	2 888 678.14		
L110	101 325.37	2 888 282.37		R110	102 264.55	2 888 648.31		
L111	101 168.26	2 888 254.26		R111	102 159.93	2 888 611.41		
L112	101 019.10	2 888 246.81		R112	101 433.47	2 888 353.70		
L113	100 895.08	2 888 254.17		R113	101 314.72	2 888 319.11		
L114	100 352.87	2 888 324.63		R114	101 175.63	2 888 292.46		
L115	100 172.90	2 888 347.83		R115	101 019.40	2 888 284.72		
L116	99 900.96	2 888 382.89		R116	100 877.63	2 888 294.36		
L117	99 272.84	2 888 463.02		R117	100 356.70	2 888 361.94		
L118	99 264.52	2 888 463.90		R118	100 181.53	2 888 384.53		
L119	99 241.60	2 888 464.24		R119	99 905.39	2 888 420.14		
L120	98 779.11	2 888 471.01		R120	99 266.81	2 888 500.29		
L121	98 321.84	2 888 477.36		R121	99 235.05	2 888 502.05		
L122	97 847.77	2 888 484.02		R122	99 220.66	2 888 502.85		
L123	97 421.05	2 888 489.76		R123	98 779.47	2 888 508.78		
L124	97 348.75	2 888 484.96		R124	98 322.28	2 888 515.19		
L125	97 286.24	2 888 476.62		R125	97 889.21	2 888 520.96		
L126	97 231.84	2 888 465.84		R126	97 407.07	2 888 526.76		
L127	96 793.99	2 888 336.42		R127	97 345.71	2 888 522.84		
L128	96 356.03	2 888 205.91		R128	97 287.29	2 888 515.69		
L129	95 949.31	2 888 084.61		R129	97 236.09	2 888 505.75		
L130	95 434.28	2 887 931.20		R130	96 782.32	2 888 372.24		
L131	95 432.39	2 887 930.64		R131	96 343.13	2 888 241.61		
L132	95 432.28	2 887 933.55		R132	95 962.78	2 888 128.04		
L133	94 799.61	2 887 744.94		R133	95 439.00	2 887 971.76		
L134	94 053.02	2 887 524.04		R134	95 434.20	2 887 970.35		
L135	93 910.56	2 887 484.94		R135	94 699.74	2 887 754.40		
L136	93 834.08	2 887 471.44		R136	94 043.72	2 887 560.34		
L137	93 746.37	2 887 465.66		R137	93 919.65	2 887 524.56		
L138	93 680.20	2 887 467.13		R138	93 829.27	2 887 508.91		
L139	93 608.96	2 887 472.73		R139	93 744.43	2 887 503.44		
L140	92 745.39	2 887 612.55		R140	93 654.21	2 887 506.46		
L141	92 635.23	2 887 645.02		R141	92 757.80	2 887 648.28		
L142	91 968.25	2 887 840.95		R142	92 642.57	2 887 682.15		
L143	91 926.31	2 887 860.32		R143	91 978.77	2 887 877.33		
L144	91 884.57	2 887 879.59		R144	91 961.70	2 887 883.41		
L145	91 834.45	2 887 919.95		R145	91 926.91	2 887 895.81		
L146	91 729.09	2 888 023.82		R146	91 905.29	2 887 910.77		
L147	91 514.70	2 887 809.08		R147	91 860.65	2 887 947.01		
L148	91 279.24	2 887 586.69		R148	91 755.76	2 888 050.78		
					Vel 9	Van 10	P792/10	
					Sheet	of		

PADRESERWE KOÖRDINATE				/	ROAD RESERVE CO-ORDINATES		
LINKERKANT/LEFT HAND SIDE					REGTERKANT/RIGHT HAND SIDE		
	Y	X	WG	31°	Y	X	
L149	91 250.31	2 887	559.39	R149	91 728.80	2 888	077.04
L150	90 943.23	2 887	269.62	R150	91 489.34	2 887	836.97
L151	90 851.36	2 887	195.03	R151	91 207.15	2 887	570.06
L152	90 702.58	2 887	106.75	R152	91 204.39	2 887	567.22
L153	90 380.59	2 886	919.78	R153	90 919.59	2 887	300.25
L154	90 149.69	2 886	783.89	R154	90 828.32	2 887	228.07
L155	90 036.22	2 886	696.72	R155	90 685.60	2 887	141.69
L156	89 948.13	2 886	610.62	R156	90 359.49	2 886	952.38
L157	89 867.33	2 886	511.91	R157	90 337.49	2 886	939.52
L158	89 643.17	2 886	149.90	R158	90 127.06	2 886	816.63
L159	89 381.25	2 885	722.53	R159	90 010.17	2 886	726.87
L160	89 100.03	2 885	266.95	R160	89 918.30	2 886	635.80
				R161	89 834.47	2 886	534.46
				R162	89 608.66	2 886	169.11
				R163	89 347.28	2 885	743.48
				R164	89 212.04	2 885	517.29
				R165	89 070.25	2 885	285.14

Vel 10 Van 10
Sheet of

P792/10

Printed by and obtainable from the Government Printer, Bosman Street, Private Bag X85, Pretoria, 0001
Publications: Tel: (012) 334-4508, 334-4509, 334-4510
Advertisements: Tel: (012) 334-4673, 334-4674, 334-4504
Subscriptions: Tel: (012) 334-4735, 334-4736, 334-4737
Cape Town Branch: Tel: (021) 465-7531

Gedruk deur en verkrygbaar by die Staatsdrukker, Bosmanstraat, Privaatsak X85, Pretoria, 0001
Publikasies: Tel: (012) 334-4508, 334-4509, 334-4510
Advertensies: Tel: (012) 334-4673, 334-4674, 334-4504
Subskripsies: Tel: (012) 334-4735, 334-4736, 334-4737
Kaapstad-tak: Tel: (021) 465-7531