



Government Gazette Staatskoerant

REPUBLIC OF SOUTH AFRICA
REPUBLIEK VAN SUID-AFRIKA

Vol. 570

Pretoria, 11 December 2012
Desember

No. 35970

N.B. The Government Printing Works will not be held responsible for the quality of "Hard Copies" or "Electronic Files" submitted for publication purposes



9771682584003



AIDS HELPLINE: 0800-0123-22 Prevention is the cure

IMPORTANT NOTICE

The Government Printing Works will not be held responsible for faxed documents not received due to errors on the fax machine or faxes received which are unclear or incomplete. Please be advised that an "OK" slip, received from a fax machine, will not be accepted as proof that documents were received by the GPW for printing. If documents are faxed to the GPW it will be the sender's responsibility to phone and confirm that the documents were received in good order.

Furthermore the Government Printing Works will also not be held responsible for cancellations and amendments which have not been done on original documents received from clients.

CONTENTS**INHOUD**

<i>No.</i>	<i>Page No.</i>	<i>Gazette No.</i>	<i>No.</i>	<i>Bladsy No.</i>	<i>Koerant No.</i>
GOVERNMENT NOTICE			GOEWERMENTSKENNISGEWING		
Transport, Department of			Vervoer, Departement van		
<i>Government Notice</i>			<i>Goewermentskennisgewing</i>		
1040		South African National Roads Agency Limited and the National Roads Act (7/1998): Declaration amendment of National Road N17 Section 4	3	35970	
			1040		Suid-Afrikaanse Nasionale Padagentskap Beperk en die Nasionale Paaie Wet (7/1998): Verklaring wysiging van Nasionale Pad N17 Seksie 4
				4	35970

GOVERNMENT NOTICE

DEPARTMENT OF TRANSPORT

No. 1040

11 December 2012

THE SOUTH AFRICAN NATIONAL ROADS AGENCY LIMITED

Registration No: 98/09584/06

DECLARATION AMENDMENT OF NATIONAL ROAD N17 SECTION 4

AMENDMENT OF DECLARATION NO. 1 OF 2005

By virtue of section 40(1)(b) of the South African National Roads Agency Limited and the National Roads Act, 1998 (Act No. 7 of 1998), I hereby amend Declaration No. 1 of 2005 by substituting the section from the northern boundary of Church street on sheet 24 up to the end of sheet 35 of Plan No. P546/04, with the subjoined sheets 1 to 14 of Plan No. P780/09.

(National Road N17 Section 4: Bethal - Ermelo)



MINISTER OF TRANSPORT

GOEWERMENTSKENNISGEWING

DEPARTEMENT VAN VERVOER

No. 1040

11 Desember 2012

DIE SUID-AFRIKAANSE NASIONALE PADAGENTSKAP BEPERK

Registrasie No: 98/09584/06

VERKLARING WYSIGING VAN NASIONALE PAD N17 SEKSIE 4

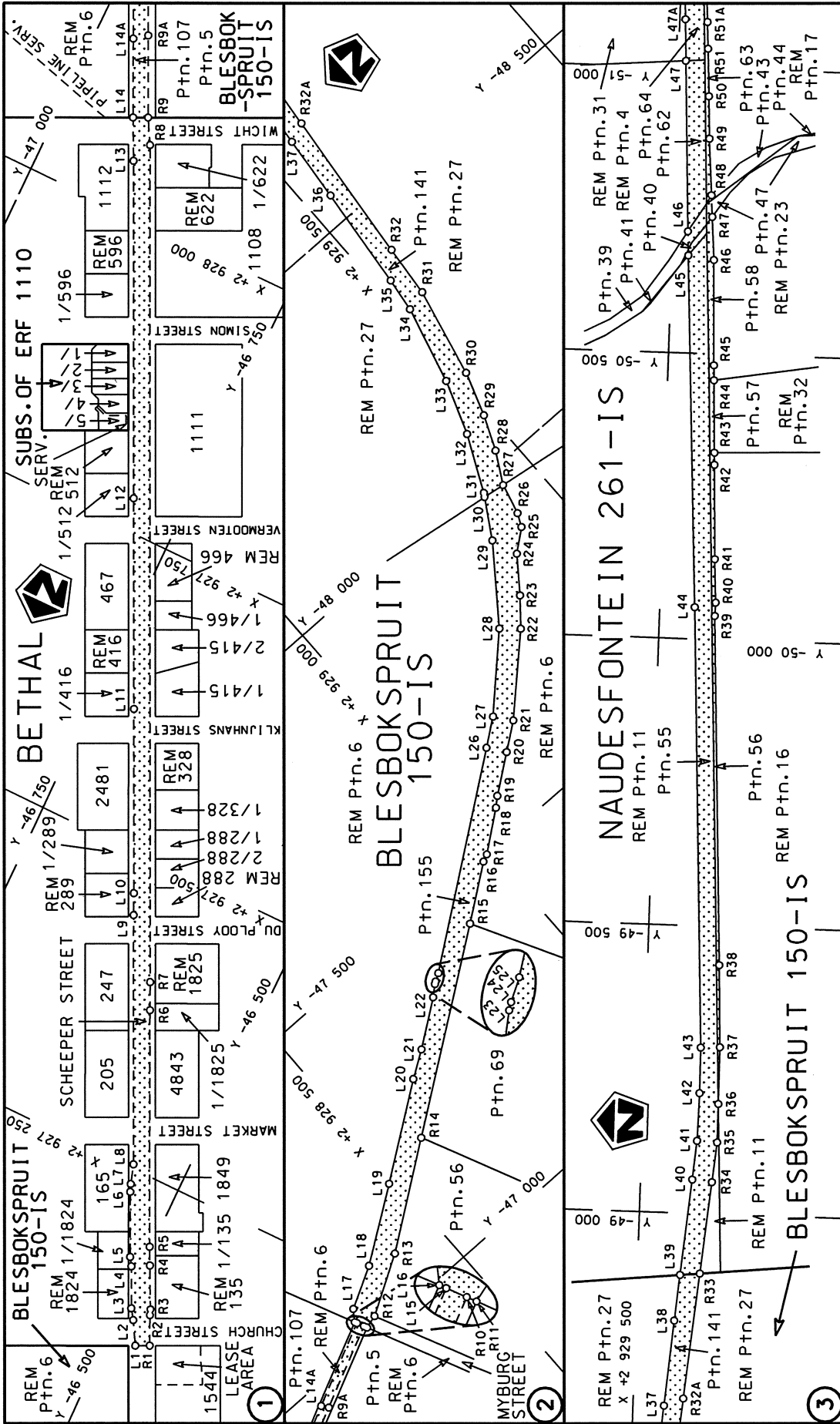
WYSIGING VAN VERKLARING NO.1 VAN 2005

Kragtens Artikel 40(1)(b) van die Wet op die Suid-Afrikaanse Nasionale Padagentskap Beperk en op Nasionale Paaie, 1998 (Wet no. 7 van 1998), wysig ek hiermee Verklaring no. 1 van 2005 deur die gedeelte vanaf die noordelike grens van Kerkstraat op vel 24 tot die einde van vel 35 van Plan no. P546/04, te vervang met meegaande velle 1 tot 14 van Plan no. P780/09.

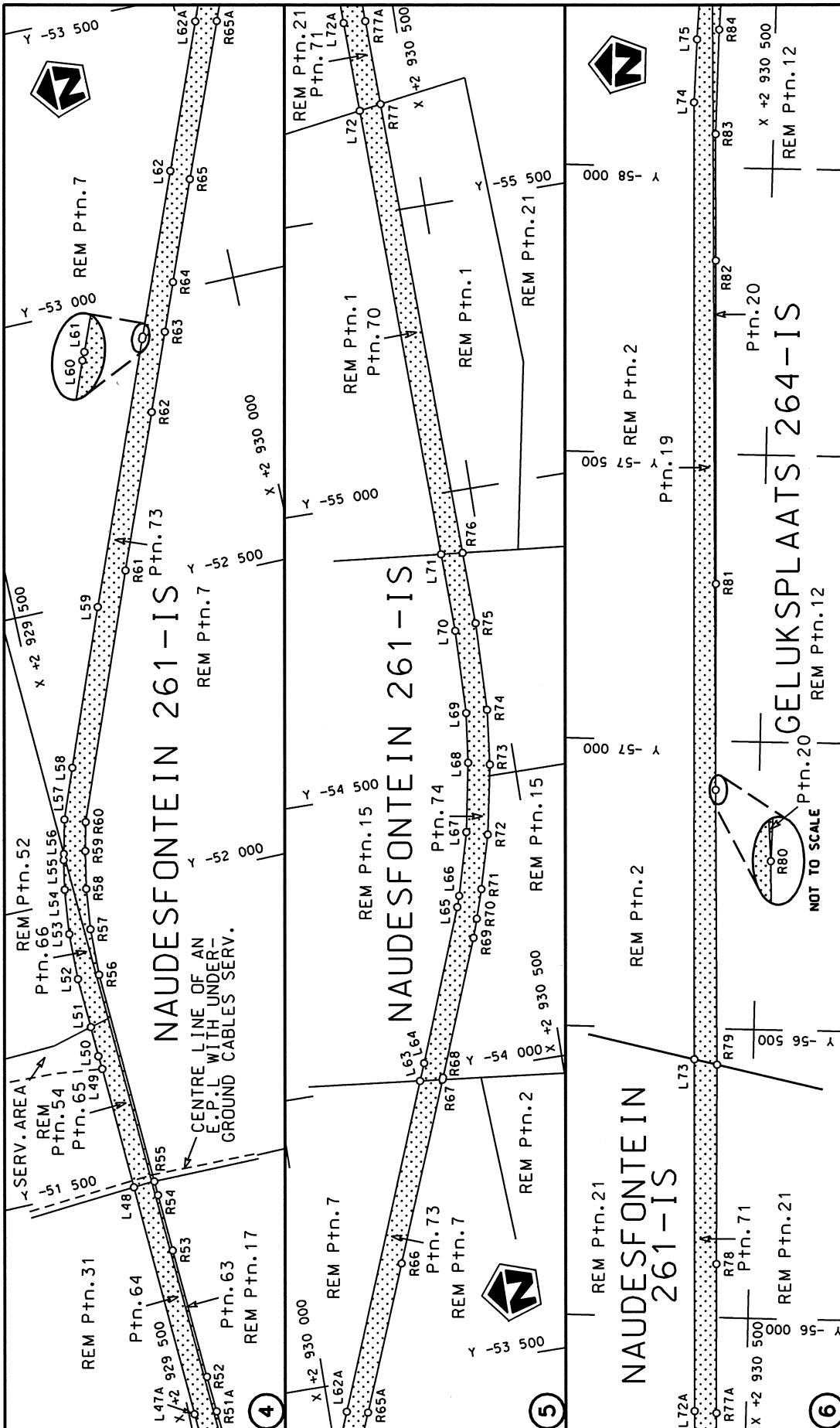
(Nasionale Pad N17 Seksie 4 Bethal - Ermelo)



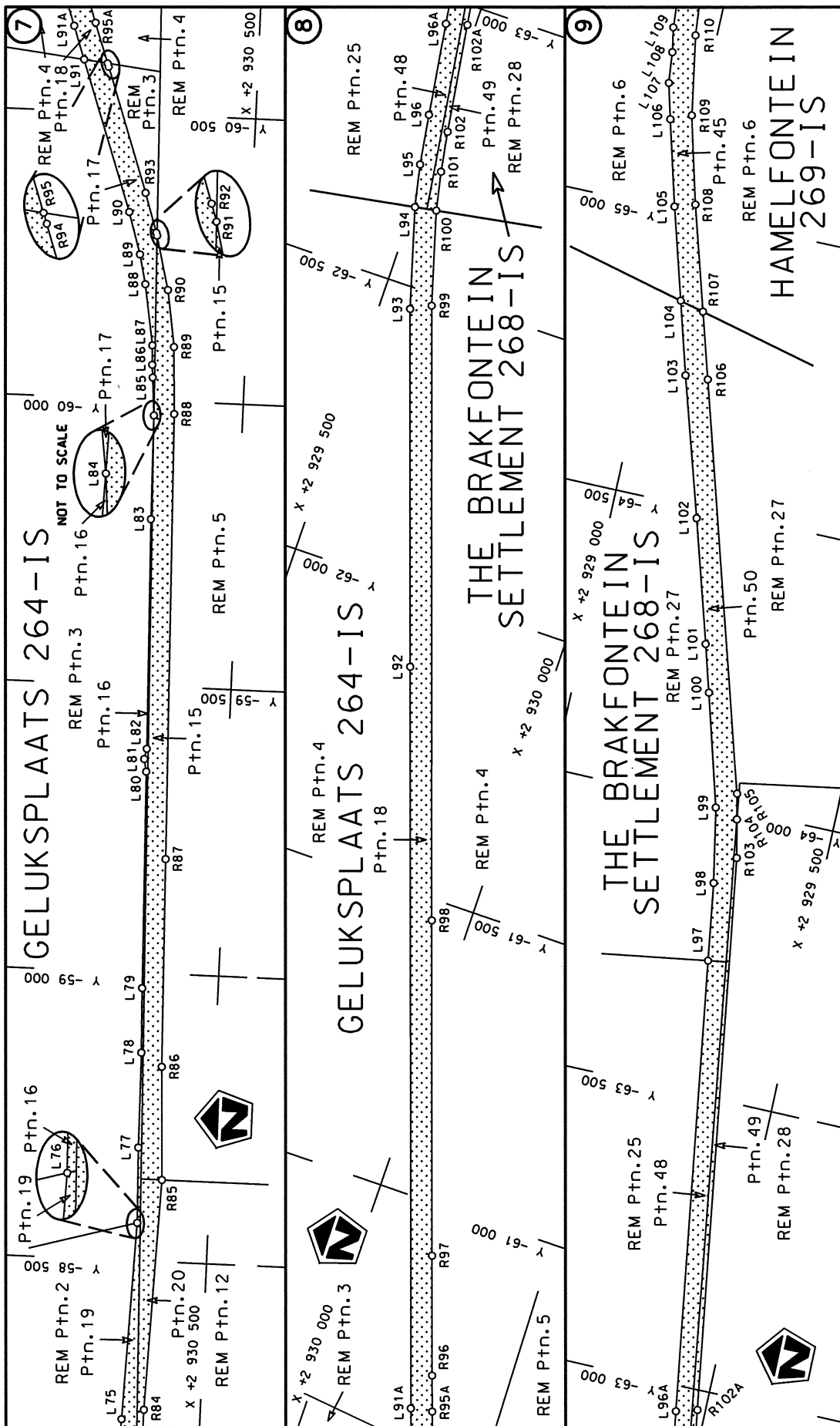
MINISTER VAN VERVOER



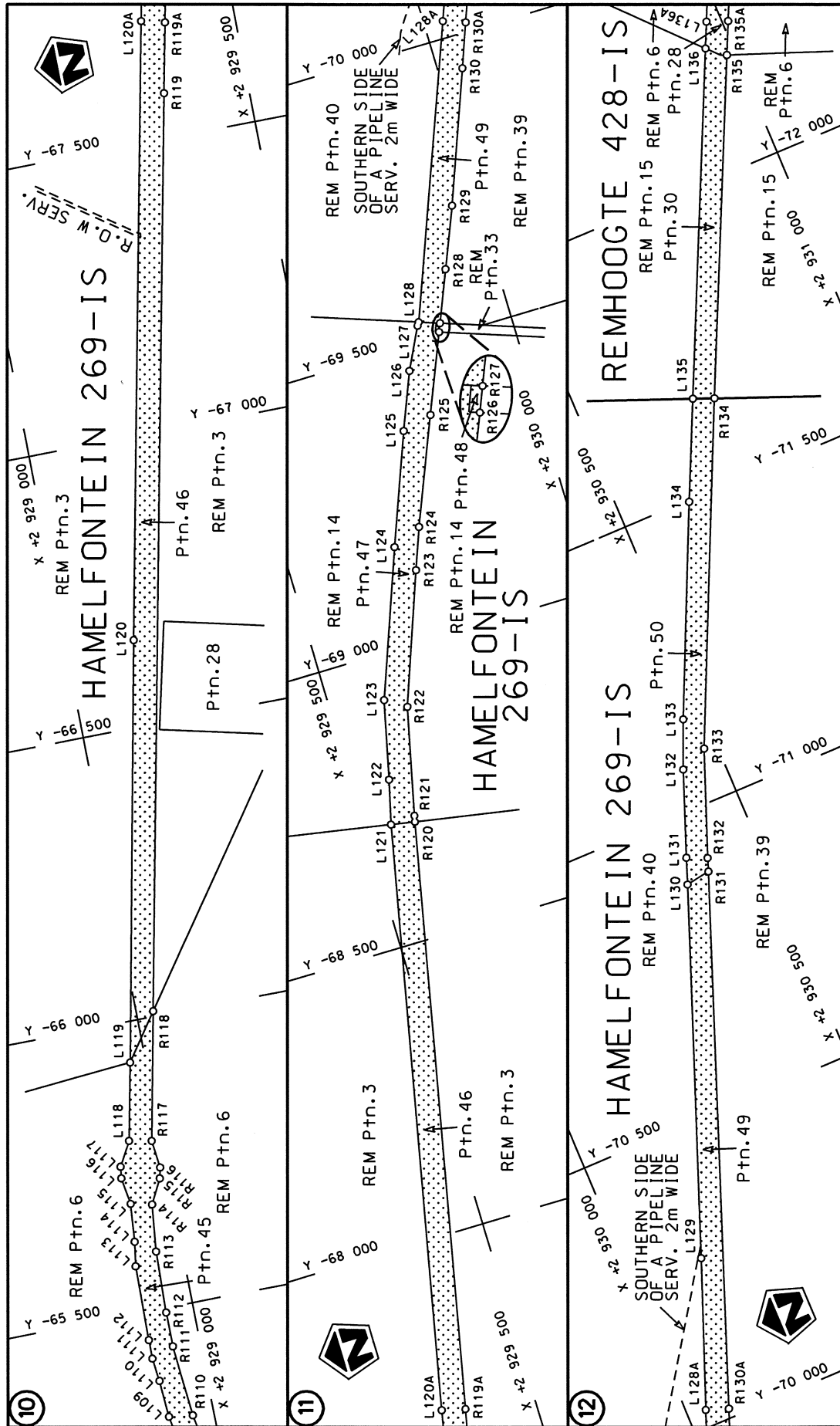
<p>Die Suid Afrikaanse Nasionale Padagentskap Beperk The South African National Roads Agency Limited</p>	<p>Die figuur getoon The figure shown</p>	<p>stelt die padreserwe voor van 'n gedeelte represents the road reserve of a portion van Nasionale Roete N17 of National Route</p>	<p>Vel Sheet 1 of 14 Plan P780/09</p>
<p>4</p>		<p>Seksie N17 Section</p>	<p>4</p>



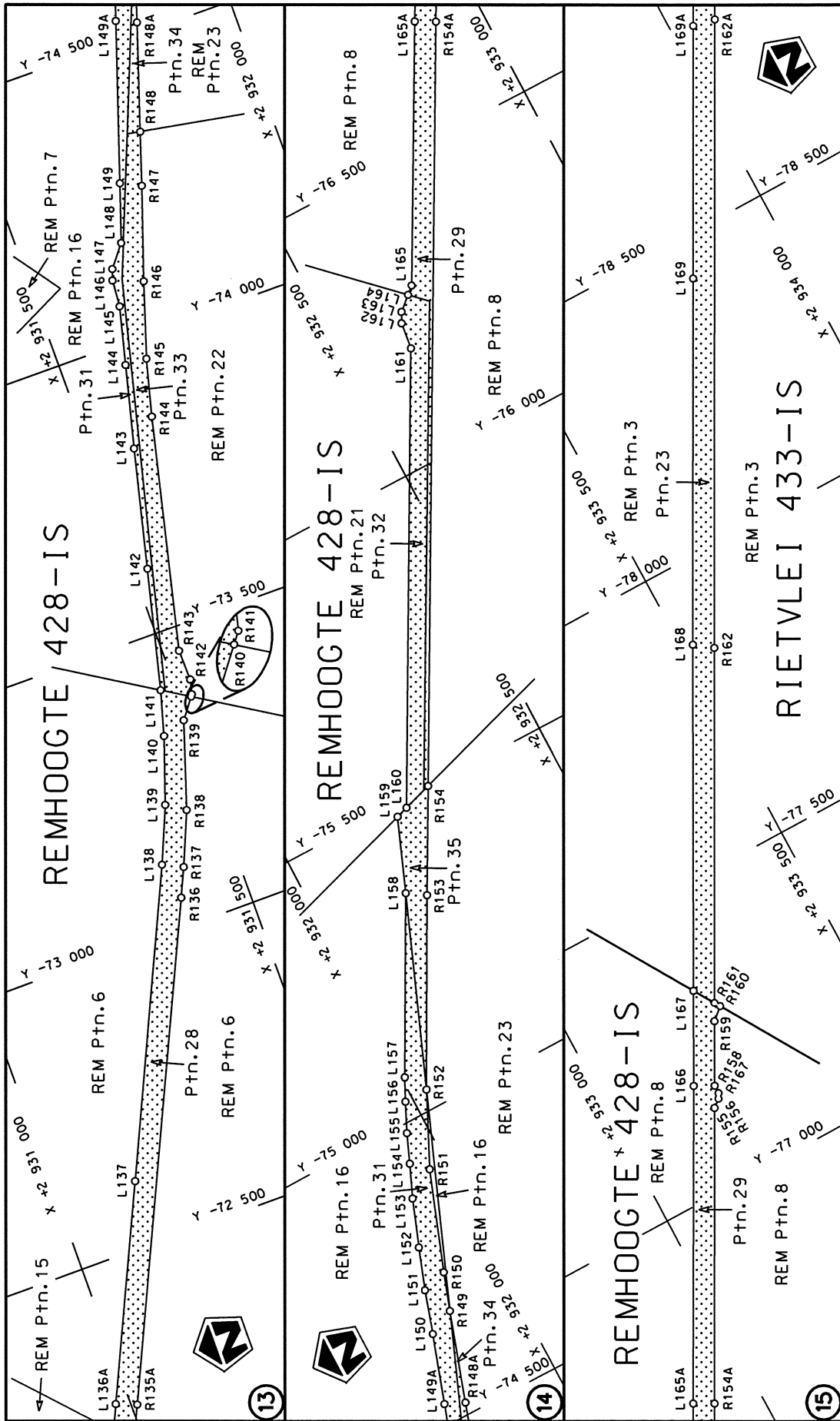
<p>Die Suid Afrikaanse Nasionale Padagentskap Beperk The South African National Roads Agency Limited</p>	<p>Die figuur getoon The figure shown</p>	<p>steldie padreserwe voor van 'n gedeelte represents the road reserve of a portion van Nasionale Roete N17 of National Route</p>
<p>Vel Sheet 2 of 14</p>	<p>Seksie 4</p>	<p>Plan P780/09</p>

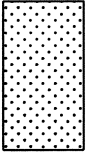


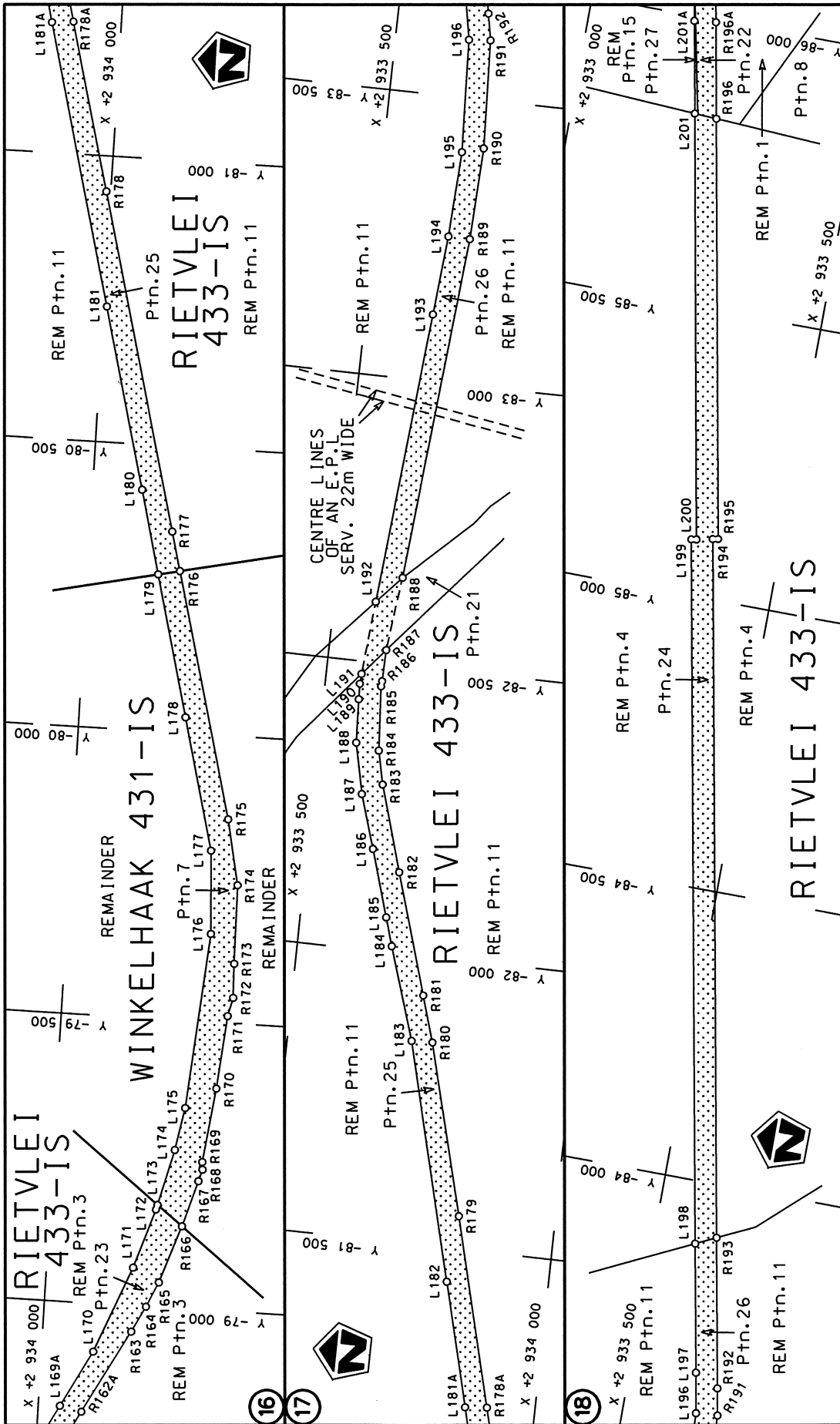
<p>Die Suid Afrikaanse Nasionale Padagentskap Beperk The South African National Roads Agency Limited</p>	<p>Die figuur getoon The figure shown</p>	<p>steldie podreserwe voor van 'n gedeelte represents the road reserve of a portion van Nasionale Roete N17 of National Route</p>	<p>Vel Sheet 3 of 14</p>
		<p>Seksie 4</p>	<p>Plan P780/09</p>

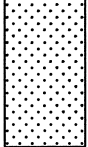


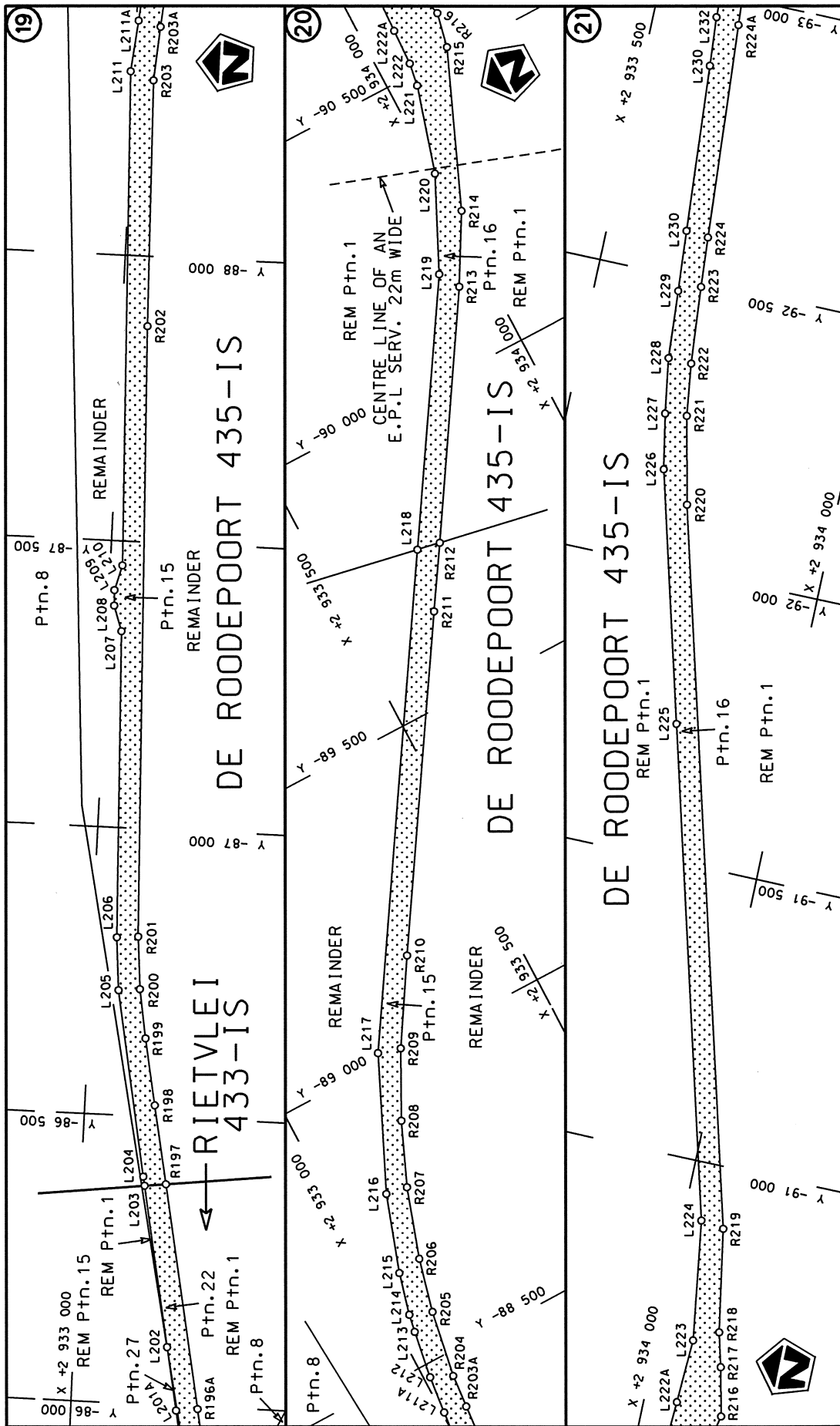
<p>Die Suid Afrikaanse Nasionale Padogentskap Beperk The South African National Roads Agency Limited</p>	<p>Die figuur getoon The figure shown</p>	<p>stelt die padreserwe voor van 'n gedeelte represents the road reserve of a portion van Nasionale Roete N17 of National Route Section</p>
<p>Vel Sheet 4 van 14</p>	<p>Plan P780/09</p>	<p>4</p>

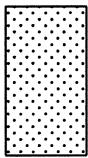


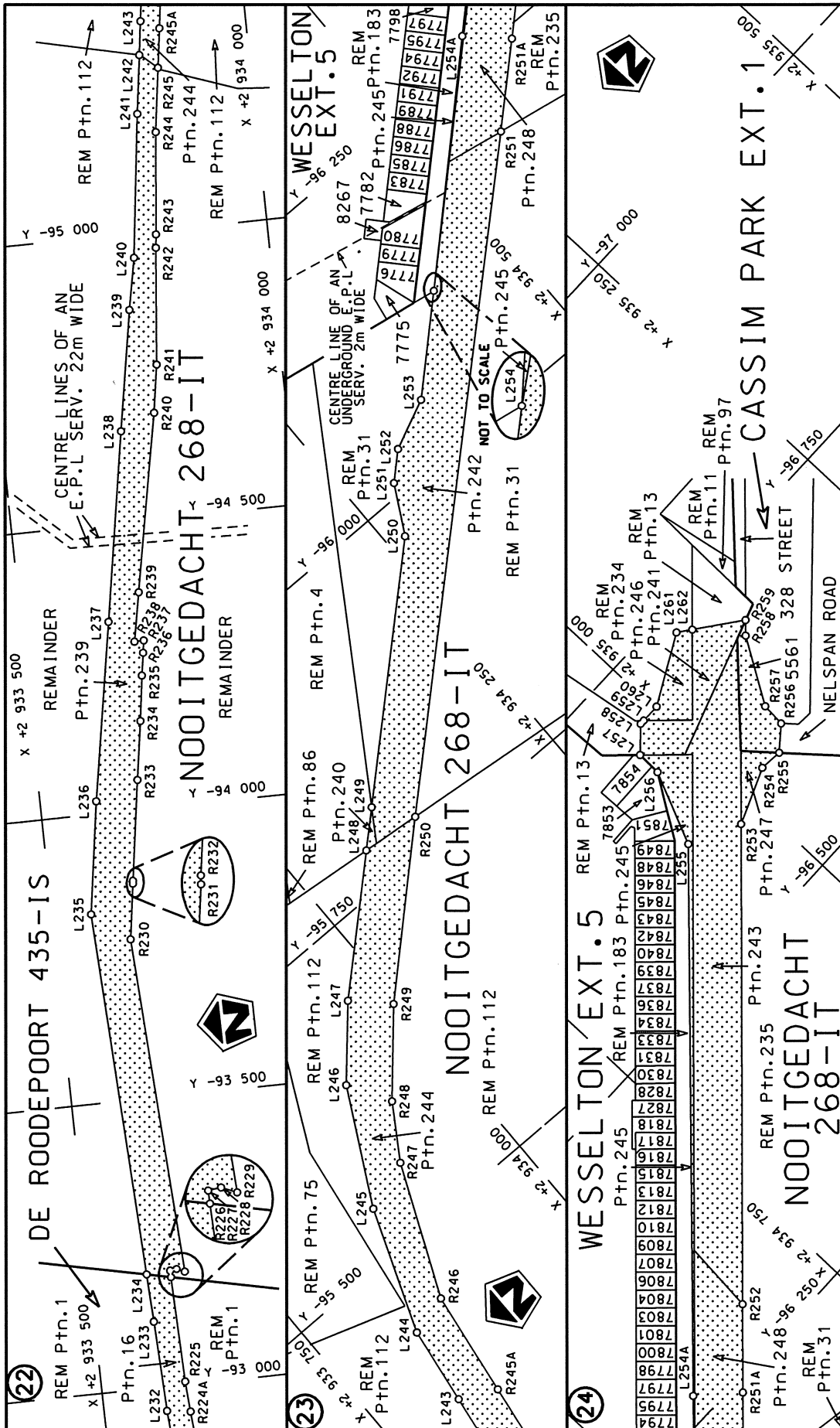
<p>Die Suid Afrikaanse Nasionale Padagentskap Beperk The South African National Roads Agency Limited</p>	<p>Die figuur getoon The figure shown</p> 	<p>stel die padreserwe voor van 'n gedeelte represents the road reserve of a portion van Nasionale Roete N17 of National Route</p> <p>Seksie Section</p> <p>4</p>	<p>Vel Sheet</p> <p>5 of 14</p> <p>Plan P780/09</p>
--	---	---	---



<p>Die Suid Afrikaanse Nasionale Padagentskap Beperk The South African National Roads Agency Limited</p>	<p>Die figuur getoon The figure shown</p> 	<p>stel die padreserwe voor van 'n gedeelte represents the road reserve of a portion van Nasionale Roete N17 of National Route</p> <p>Seksie 4 Section</p>	<p>Vel van 14 Sheet 6 of Plan P780/09</p>
--	---	--	---



Die Suid Afrikaanse Nasionale Padagentskap Beperk The South African National Roads Agency Limited	Die figuur getoon The figure shown		steldie padreserwe voor van 'n gedeelte represents the road reserve of a portion van Nasionale Roete N17 of National Route Section	
			4	4
			Vel Sheet 7 of 14	Plan P780/09



<p>Die Suid Afrikaanse Nasionale Padagentskap Beperk The South African National Roads Agency Limited</p>	<p>Die figuur getoon The figure shown</p> <p>steldie padreserwe voor van 'n gedeelte represents the road reserve of a portion van Nasionale Roete N17 Seksie of National Route Section</p>	<p>Vel Sheet 8 of 14 Plan P780/09</p>
--	--	---

PADRESERWE KOÖRDINATE				/	ROAD RESERVE CO-ORDINATES				
LINKERKANT/LEFT HAND SIDE					REGTERKANT/RIGHT HAND SIDE				
	Y	X	WG	29°	Y	X			
L1	-46 475.990	2 927 111.870		R1	-46 464.460	2 927 117.360			
L2	-46 487.150	2 927 131.200		R2	-46 475.710	2 927 141.360			
L3	-46 493.090	2 927 139.690		R3	-46 477.420	2 927 146.090			
L4	-46 508.670	2 927 172.780		R4	-46 494.310	2 927 180.460			
L5	-46 513.260	2 927 179.600		R5	-46 501.510	2 927 195.080			
L6	-46 537.420	2 927 230.830		R6	-46 589.560	2 927 380.730			
L7	-46 539.970	2 927 237.160		R7	-46 599.940	2 927 402.880			
L8	-46 545.200	2 927 253.560		R8	-46 914.690	2 928 063.550			
L9	-46 638.150	2 927 449.290		R9	-46 926.560	2 928 084.570			
L10	-46 646.220	2 927 466.670		R10	-47 023.790	2 928 289.370			
L11	-46 715.240	2 927 611.720		R11	-47 018.190	2 928 292.030			
L12	-46 794.610	2 927 778.080		R12	-47 024.800	2 928 315.050			
L13	-46 921.890	2 928 044.740		R13	-47 083.400	2 928 413.590			
L14	-46 938.570	2 928 078.840		R14	-47 204.590	2 928 580.520			
L15	-47 035.530	2 928 283.790		R15	-47 428.890	2 928 889.680			
L16	-47 039.500	2 928 281.900		R16	-47 494.950	2 928 978.570			
L17	-47 058.540	2 928 295.310		R17	-47 500.590	2 928 991.470			
L18	-47 097.010	2 928 365.340		R18	-47 551.370	2 929 057.010			
L19	-47 181.220	2 928 485.710		R19	-47 565.220	2 929 072.310			
L20	-47 290.390	2 928 637.090		R20	-47 612.130	2 929 135.000			
L21	-47 319.690	2 928 681.790		R21	-47 646.110	2 929 180.220			
L22	-47 374.640	2 928 756.690		R22	-47 757.970	2 929 295.270			
L23	-47 389.830	2 928 774.110		R23	-47 802.680	2 929 332.690			
L24	-47 392.650	2 928 778.080		R24	-47 861.400	2 929 376.550			
L25	-47 400.360	2 928 791.210		R25	-47 891.330	2 929 413.340			
L26	-47 640.950	2 929 113.320		R26	-47 914.160	2 929 424.260			
L27	-47 674.310	2 929 157.850		R27	-47 967.920	2 929 437.530			
L28	-47 782.810	2 929 267.210		R28	-48 022.090	2 929 467.380			
L29	-47 906.940	2 929 359.510		R29	-48 082.260	2 929 492.520			
L30	-47 973.270	2 929 399.210		R30	-48 158.790	2 929 518.090			
L31	-47 979.930	2 929 403.200		R31	-48 315.350	2 929 553.060			
L32	-48 076.880	2 929 448.710		R32	-48 406.500	2 929 561.360			
L33	-48 170.900	2 929 482.250		R33	-48 895.720	2 929 609.630			
L34	-48 307.050	2 929 517.210		R34	-49 055.170	2 929 625.360			
L35	-48 367.060	2 929 525.090		R35	-49 124.530	2 929 632.160			
L36	-48 548.290	2 929 543.830		R36	-49 191.360	2 929 631.840			
L37	-48 663.600	2 929 554.410		R37	-49 289.790	2 929 631.350			
L38	-48 812.340	2 929 567.440		R38	-49 432.580	2 929 625.330			
L39	-48 892.280	2 929 575.090		R39	-50 041.360	2 929 596.900			
L40	-49 058.560	2 929 590.990		R40	-50 064.770	2 929 597.700			
L41	-49 126.060	2 929 597.070		R41	-50 140.630	2 929 593.550			
L42	-49 209.000	2 929 598.580		R42	-50 306.050	2 929 587.230			
L43	-49 288.200	2 929 598.060		R43	-50 327.320	2 929 586.390			
L44	-50 055.550	2 929 561.440		R44	-50 454.270	2 929 581.340			
L45	-50 671.030	2 929 529.100		R45	-50 480.510	2 929 580.290			
L46	-50 713.150	2 929 526.890		R46	-50 664.680	2 929 573.920			
L47	-51 011.800	2 929 513.090		R47	-50 739.970	2 929 568.560			
L48	-51 491.240	2 929 490.930		R48	-50 777.760	2 929 565.870			
L49	-51 703.070	2 929 481.140		R49	-50 876.680	2 929 558.810			
L50	-51 726.000	2 929 479.290		R50	-50 950.950	2 929 555.350			
L51	-51 778.200	2 929 477.530		R51	-51 034.250	2 929 551.150			
					Vel	9	Van	14	P780/09
					Sheet		of		

PADRESERWE KOÖRDINATE				/	ROAD RESERVE CO-ORDINATES				
LINKERKANT/LEFT HAND SIDE					REGTERKANT/RIGHT HAND SIDE				
	Y	X	WG	29°	Y	X			
L52	-51 864.220	2 929 473.410		R52	-51 143.250	2 929 544.670			
L53	-51 943.720	2 929 475.210		R53	-51 370.080	2 929 533.650			
L54	-52 020.640	2 929 483.900		R54	-51 469.150	2 929 529.210			
L55	-52 071.420	2 929 493.310		R55	-51 493.670	2 929 528.070			
L56	-52 081.790	2 929 495.800		R56	-51 863.530	2 929 510.830			
L57	-52 139.960	2 929 509.730		R57	-51 944.140	2 929 513.170			
L58	-52 224.950	2 929 542.490		R58	-52 014.160	2 929 521.150			
L59	-52 488.700	2 929 645.900		R59	-52 078.910	2 929 533.740			
L60	-52 929.110	2 929 821.550		R60	-52 127.970	2 929 545.190			
L61	-52 933.640	2 929 823.730		R61	-52 540.750	2 929 706.560			
L62	-53 205.100	2 929 932.750		R62	-52 801.100	2 929 810.820			
L63	-53 996.490	2 930 249.180		R63	-52 933.200	2 929 863.290			
L64	-54 025.590	2 930 261.040		R64	-53 014.830	2 929 895.750			
L65	-54 283.770	2 930 361.470		R65	-53 183.850	2 929 962.740			
L66	-54 302.700	2 930 367.890		R66	-53 689.930	2 930 166.950			
L67	-54 409.920	2 930 398.020		R67	-53 992.300	2 930 288.310			
L68	-54 528.540	2 930 420.300		R68	-53 995.750	2 930 289.690			
L69	-54 614.260	2 930 430.570		R69	-54 226.500	2 930 380.970			
L70	-54 758.550	2 930 434.370		R70	-54 258.380	2 930 392.160			
L71	-54 894.410	2 930 431.490		R71	-54 307.870	2 930 407.960			
L72	-55 681.300	2 930 414.140		R72	-54 399.790	2 930 434.080			
L73	-56 446.380	2 930 397.270		R73	-54 519.210	2 930 457.090			
L74	-58 113.160	2 930 360.670		R74	-54 614.180	2 930 467.490			
L75	-58 223.220	2 930 363.390		R75	-54 766.100	2 930 471.750			
L76	-58 565.940	2 930 376.470		R76	-54 890.790	2 930 469.050			
L77	-58 696.470	2 930 372.800		R77	-55 686.870	2 930 451.790			
L78	-58 861.350	2 930 371.050		R78	-56 093.130	2 930 442.980			
L79	-58 973.460	2 930 367.620		R79	-56 438.040	2 930 436.810			
L80	-59 350.740	2 930 358.600		R80	-56 915.010	2 930 424.330			
L81	-59 372.650	2 930 354.240		R81	-57 273.700	2 930 417.080			
L82	-59 390.790	2 930 357.980		R82	-57 837.930	2 930 404.560			
L83	-59 791.920	2 930 348.010		R83	-58 058.730	2 930 399.330			
L84	-59 973.890	2 930 345.360		R84	-58 241.210	2 930 401.750			
L85	-60 040.220	2 930 340.250		R85	-58 642.130	2 930 416.530			
L86	-60 062.420	2 930 338.540		R86	-58 838.260	2 930 407.910			
L87	-60 096.450	2 930 337.290		R87	-59 200.000	2 930 399.230			
L88	-60 202.850	2 930 320.150		R88	-59 977.950	2 930 380.500			
L89	-60 254.480	2 930 308.420		R89	-60 095.240	2 930 375.060			
L90	-60 327.750	2 930 286.400		R90	-60 194.420	2 930 360.090			
L91	-60 591.030	2 930 195.930		R91	-60 288.580	2 930 337.220			
L92	-61 870.070	2 929 756.440		R92	-60 293.770	2 930 335.560			
L93	-62 462.730	2 929 552.990		R93	-60 362.520	2 930 313.590			
L94	-62 634.120	2 929 503.190		R94	-60 580.080	2 930 239.390			
L95	-62 707.460	2 929 487.380		R95	-60 586.390	2 930 237.200			
L96	-62 794.730	2 929 473.710		R96	-60 715.450	2 930 192.490			
L97	-63 732.470	2 929 335.530		R97	-60 912.880	2 930 124.730			
L98	-63 866.900	2 929 315.720		R98	-61 463.910	2 929 935.450			
L99	-63 996.120	2 929 290.960		R99	-62 480.300	2 929 586.900			
L100	-64 189.290	2 929 235.990		R100	-62 640.530	2 929 540.450			
L101	-64 270.760	2 929 211.880		R101	-62 707.450	2 929 526.110			
L102	-64 482.380	2 929 148.930		R102	-62 777.460	2 929 514.280			
					Vel	10	Van	14	P780/09
					Sheet		of		

PADRESERWE KOÖRDINATE				/	ROAD RESERVE CO-ORDINATES			
LINKERKANT/LEFT HAND SIDE					REGTERKANT/RIGHT HAND SIDE			
	Y	X	WG	29°	Y	X		
L103	-64 722.860	2 929 075.630		R103	-63 918.090	2 929 345.480		
L104	-64 848.390	2 929 038.800		R104	-63 983.830	2 929 331.270		
L105	-65 006.810	2 928 992.330		R105	-64 027.750	2 929 321.780		
L106	-65 154.570	2 928 951.970		R106	-64 724.070	2 929 115.130		
L107	-65 216.120	2 928 935.680		R107	-64 838.120	2 929 081.120		
L108	-65 270.010	2 928 929.940		R108	-65 018.240	2 929 027.400		
L109	-65 312.880	2 928 922.070		R109	-65 169.290	2 928 987.450		
L110	-65 377.350	2 928 917.630		R110	-65 307.710	2 928 963.380		
L111	-65 417.770	2 928 912.970		R111	-65 431.790	2 928 952.200		
L112	-65 450.730	2 928 912.980		R112	-65 492.040	2 928 951.990		
L113	-65 581.000	2 928 914.690		R113	-65 599.220	2 928 954.830		
L114	-65 623.050	2 928 921.110		R114	-65 680.740	2 928 963.530		
L115	-65 688.970	2 928 926.830		R115	-65 722.700	2 928 985.460		
L116	-65 735.660	2 928 919.270		R116	-65 741.060	2 928 989.780		
L117	-65 755.510	2 928 921.770		R117	-65 789.040	2 928 983.960		
L118	-65 796.710	2 928 944.940		R118	-66 009.320	2 929 029.460		
L119	-65 929.780	2 928 972.820		R119	-67 578.950	2 929 353.710		
L120	-66 650.090	2 929 119.270		R120	-68 702.870	2 929 586.270		
L121	-68 710.190	2 929 544.860		R121	-68 713.440	2 929 588.460		
L122	-68 786.130	2 929 564.070		R122	-68 898.600	2 929 630.850		
L123	-68 921.340	2 929 595.470		R123	-69 122.780	2 929 713.710		
L124	-69 172.290	2 929 689.310		R124	-69 193.700	2 929 740.270		
L125	-69 362.450	2 929 762.810		R125	-69 375.940	2 929 815.560		
L126	-69 460.280	2 929 802.430		R126	-69 510.520	2 929 871.300		
L127	-69 531.540	2 929 838.450		R127	-69 524.980	2 929 877.290		
L128	-69 537.240	2 929 842.270		R128	-69 612.550	2 929 913.560		
L129	-70 275.950	2 930 128.280		R129	-69 715.610	2 929 956.170		
L130	-70 882.750	2 930 358.780		R130	-69 941.040	2 930 042.230		
L131	-70 926.570	2 930 375.000		R131	-70 889.530	2 930 401.260		
L132	-71 070.230	2 930 429.700		R132	-70 911.640	2 930 409.050		
L133	-71 150.860	2 930 463.650		R133	-71 089.620	2 930 477.570		
L134	-71 496.740	2 930 621.060		R134	-71 646.610	2 930 732.140		
L135	-71 660.520	2 930 697.180		R135	-72 191.240	2 930 985.190		
L136	-72 216.220	2 930 955.450		R136	-73 050.360	2 931 384.360		
L137	-72 612.950	2 931 139.830		R137	-73 099.290	2 931 406.530		
L138	-73 115.860	2 931 372.330		R138	-73 191.340	2 931 445.480		
L139	-73 212.370	2 931 413.390		R139	-73 340.670	2 931 494.050		
L140	-73 326.330	2 931 452.390		R140	-73 375.200	2 931 520.390		
L141	-73 403.750	2 931 474.190		R141	-73 378.580	2 931 522.960		
L142	-73 611.760	2 931 524.830		R142	-73 403.950	2 931 529.170		
L143	-73 818.610	2 931 574.650		R143	-73 457.690	2 931 527.860		
L144	-73 961.700	2 931 610.620		R144	-73 860.610	2 931 623.320		
L145	-74 061.900	2 931 635.830		R145	-73 959.410	2 931 648.980		
L146	-74 108.890	2 931 639.510		R146	-74 088.950	2 931 690.640		
L147	-74 127.870	2 931 646.150		R147	-74 247.770	2 931 744.520		
L148	-74 165.610	2 931 676.240		R148	-74 337.980	2 931 774.140		
L149	-74 265.020	2 931 709.730		R149	-74 674.620	2 931 884.710		
L150	-74 653.110	2 931 839.320		R150	-74 739.400	2 931 906.880		
L151	-74 727.210	2 931 862.990		R151	-74 909.510	2 931 969.120		
L152	-74 798.080	2 931 888.520		R152	-75 034.670	2 932 029.230		
L153	-74 878.610	2 931 918.600		R153	-75 333.890	2 932 189.180		

Vel	11	Van	14	P780/09
Sheet		of		

PADRESERWE KOÖRDINATE				/	ROAD RESERVE CO-ORDINATES				
LINKERKANT/LEFT HAND SIDE					REGTERKANT/RIGHT HAND SIDE				
	Y	X	WG	29°	Y	X			
L154	-74	934.470	2 931	942.770	R154	-75	501.710	2 932	280.350
L155	-74	983.740	2 931	963.290	R155	-77	133.450	2 933	166.800
L156	-75	033.380	2 931	986.590	R156	-77	144.290	2 933	180.510
L157	-75	071.370	2 932	005.420	R157	-77	152.840	2 933	185.360
L158	-75	354.390	2 932	157.570	R158	-77	167.290	2 933	185.280
L159	-75	479.240	2 932	207.680	R159	-77	266.360	2 933	238.770
L160	-75	485.800	2 932	228.880	R160	-77	284.670	2 933	260.080
L161	-76	194.110	2 932	613.270	R161	-77	294.300	2 933	254.120
L162	-76	240.700	2 932	619.360	R162	-77	840.130	2 933	550.140
L163	-76	258.430	2 932	628.700	R163	-78	954.620	2 934	155.690
L164	-76	279.390	2 932	652.700	R164	-78	999.560	2 934	178.950
L165	-76	291.010	2 932	666.010	R165	-79	043.060	2 934	198.950
L166	-77	184.490	2 933	152.860	R166	-79	143.060	2 934	233.240
L167	-77	330.390	2 933	231.790	R167	-79	222.910	2 934	257.280
L168	-77	862.930	2 933	519.910	R168	-79	243.340	2 934	263.060
L169	-78	428.090	2 933	826.950	R169	-79	256.470	2 934	261.860
L170	-78	915.920	2 934	091.680	R170	-79	385.330	2 934	278.760
L171	-79	066.070	2 934	152.230	R171	-79	512.280	2 934	290.820
L172	-79	169.190	2 934	186.470	R172	-79	544.570	2 934	298.500
L173	-79	177.600	2 934	188.580	R173	-79	603.800	2 934	296.640
L174	-79	274.600	2 934	212.900	R174	-79	740.960	2 934	294.410
L175	-79	348.440	2 934	226.580	R175	-79	854.690	2 934	271.010
L176	-79	653.400	2 934	252.910	R176	-80	282.190	2 934	160.970
L177	-79	798.210	2 934	244.460	R177	-80	350.330	2 934	143.430
L178	-80	027.730	2 934	186.120	R178	-80	937.830	2 933	992.200
L179	-80	274.120	2 934	123.490	R179	-81	557.390	2 933	832.020
L180	-80	420.490	2 934	086.290	R180	-81	852.110	2 933	753.610
L181	-80	736.910	2 934	005.190	R181	-81	931.790	2 933	728.940
L182	-81	441.850	2 933	823.170	R182	-82	140.690	2 933	663.920
L183	-81	851.050	2 933	717.150	R183	-82	289.790	2 933	618.590
L184	-82	010.960	2 933	664.720	R184	-82	347.850	2 933	605.580
L185	-82	060.070	2 933	649.660	R185	-82	459.450	2 933	597.600
L186	-82	176.410	2 933	613.860	R186	-82	468.840	2 933	598.400
L187	-82	269.350	2 933	584.270	R187	-82	523.680	2 933	599.630
L188	-82	357.270	2 933	564.940	R188	-82	652.480	2 933	614.640
L189	-82	433.340	2 933	561.120	R189	-83	254.750	2 933	667.580
L190	-82	460.160	2 933	560.100	R190	-83	415.380	2 933	674.580
L191	-82	477.680	2 933	561.260	R191	-83	604.590	2 933	665.870
L192	-82	605.660	2 933	572.450	R192	-83	651.050	2 933	657.210
L193	-83	116.740	2 933	617.560	R193	-83	908.580	2 933	608.300
L194	-83	255.240	2 933	629.830	R194	-85	104.880	2 933	381.080
L195	-83	404.620	2 933	637.420	R195	-85	106.670	2 933	390.190
L196	-83	601.850	2 933	628.350	R196	-85	829.940	2 933	253.270
L197	-83	671.240	2 933	615.480	R197	-86	384.070	2 933	148.360
L198	-83	891.820	2 933	573.530	R198	-86	520.020	2 933	122.620
L199	-85	097.650	2 933	344.220	R199	-86	635.320	2 933	100.720
L200	-85	099.000	2 933	353.160	R200	-86	720.380	2 933	086.880
L201	-85	832.080	2 933	214.650	R201	-86	811.490	2 933	079.590
L202	-86	101.130	2 933	163.810	R202	-87	877.860	2 933	045.080
L203	-86	379.670	2 933	111.180	R203	-88	308.140	2 933	035.020
L204	-86	395.400	2 933	108.210	R204	-88	460.100	2 933	047.510

Vel	12	Van	14	P780/09
Sheet		of		

PADRESERWE KOÖRDINATE				/	ROAD RESERVE CO-ORDINATES			
LINKERKANT/LEFT HAND SIDE					REGTERKANT/RIGHT HAND SIDE			
	Y	X	WG	29°	Y	X		
L205	-86 716.690	2 933	049.530	R205	-88 575.580	2 933	067.780	
L206	-86 808.690	2 933	042.200	R206	-88 667.860	2 933	090.640	
L207	-87 342.140	2 933	024.900	R207	-88 787.780	2 933	129.950	
L208	-87 386.410	2 933	010.210	R208	-88 894.310	2 933	175.530	
L209	-87 413.390	2 933	009.340	R209	-89 005.760	2 933	233.500	
L210	-87 457.310	2 933	021.190	R210	-89 143.230	2 933	319.040	
L211	-88 321.990	2 932	993.920	R211	-89 651.240	2 933	642.440	
L212	-88 476.920	2 933	010.660	R212	-89 752.740	2 933	707.680	
L213	-88 559.420	2 933	023.880	R213	-90 132.980	2 933	948.050	
L214	-88 590.260	2 933	029.520	R214	-90 248.410	2 934	013.790	
L215	-88 662.320	2 933	048.430	R215	-90 513.780	2 934	125.340	
L216	-88 794.380	2 933	092.570	R216	-90 574.160	2 934	138.340	
L217	-89 017.090	2 933	194.490	R217	-90 657.880	2 934	119.420	
L218	-89 760.430	2 933	667.420	R218	-90 716.580	2 934	103.840	
L219	-90 168.610	2 933	927.110	R219	-90 894.020	2 934	072.380	
L220	-90 327.810	2 934	003.090	R220	-92 113.280	2 933	741.380	
L221	-90 478.530	2 934	047.810	R221	-92 265.370	2 933	707.770	
L222	-90 518.690	2 934	054.310	R222	-92 356.530	2 933	695.730	
L223	-90 693.020	2 934	062.190	R223	-92 491.260	2 933	683.980	
L224	-90 899.830	2 934	032.050	R224	-92 578.170	2 933	677.160	
L225	-91 734.960	2 933	805.000	R225	-93 005.700	2 933	645.860	
L226	-92 165.210	2 933	688.130	R226	-93 188.540	2 933	640.640	
L227	-92 261.400	2 933	669.680	R227	-93 199.840	2 933	640.320	
L228	-92 357.460	2 933	654.780	R228	-93 201.410	2 933	651.800	
L229	-92 475.650	2 933	646.180	R229	-93 195.650	2 933	665.380	
L230	-92 581.680	2 933	638.110	R230	-93 777.600	2 933	632.270	
L231	-92 872.540	2 933	616.150	R231	-93 873.300	2 933	646.550	
L232	-92 958.210	2 933	609.290	R232	-93 878.400	2 933	647.010	
L233	-93 114.660	2 933	602.800	R233	-94 051.850	2 933	673.380	
L234	-93 197.470	2 933	598.840	R234	-94 153.120	2 933	689.320	
L235	-93 827.910	2 933	568.670	R235	-94 231.540	2 933	700.330	
L236	-94 022.390	2 933	598.110	R236	-94 270.720	2 933	706.610	
L237	-94 330.430	2 933	652.110	R237	-94 291.860	2 933	709.820	
L238	-94 659.210	2 933	708.900	R238	-94 291.410	2 933	693.520	
L239	-94 868.220	2 933	745.560	R239	-94 376.280	2 933	709.960	
L240	-94 957.800	2 933	763.110	R240	-94 685.170	2 933	769.690	
L241	-95 206.800	2 933	795.060	R241	-94 768.490	2 933	782.980	
L242	-95 308.720	2 933	809.290	R242	-94 971.220	2 933	802.990	
L243	-95 367.090	2 933	817.440	R243	-94 994.370	2 933	805.620	
L244	-95 434.910	2 933	826.920	R244	-95 171.840	2 933	823.790	
L245	-95 541.250	2 933	867.180	R245	-95 283.310	2 933	839.490	
L246	-95 638.160	2 933	918.310	R246	-95 443.860	2 933	862.120	
L247	-95 692.950	2 933	966.650	R247	-95 556.370	2 933	910.970	
L248	-95 782.130	2 934	063.400	R248	-95 601.650	2 933	939.800	
L249	-95 807.700	2 934	091.140	R249	-95 665.050	2 933	995.370	
L250	-95 968.850	2 934	265.960	R250	-95 776.810	2 934	114.860	
L251	-96 010.560	2 934	288.610	R251	-96 184.420	2 934	558.110	
L252	-96 030.990	2 934	310.540	R252	-96 292.540	2 934	673.780	
L253	-96 050.730	2 934	353.680	R253	-96 576.650	2 934	977.790	
L254	-96 116.060	2 934	423.570	R254	-96 596.350	2 935	026.270	
L255	-96 598.400	2 934	933.820	R255	-96 594.440	2 935	045.910	
				Vel	13	Van	14	P780/09
				Sheet		of		

Printed by and obtainable from the Government Printer, Bosman Street, Private Bag X85, Pretoria, 0001
Publications: Tel: (012) 334-4508, 334-4509, 334-4510
Advertisements: Tel: (012) 334-4673, 334-4674, 334-4504
Subscriptions: Tel: (012) 334-4735, 334-4736, 334-4737
Cape Town Branch: Tel: (021) 465-7531

Gedruk deur en verkrygbaar by die Staatsdrukker, Bosmanstraat, Privaatsak X85, Pretoria, 0001
Publikasies: Tel: (012) 334-4508, 334-4509, 334-4510
Advertensies: Tel: (012) 334-4673, 334-4674, 334-4504
Subskripsies: Tel: (012) 334-4735, 334-4736, 334-4737
Kaapstad-tak: Tel: (021) 465-7531