



Government Gazette Staatskoerant

REPUBLIC OF SOUTH AFRICA
REPUBLIEK VAN SUID-AFRIKA

Vol. 570

Pretoria, 13 December 2012
Desember

No. 35973

N.B. The Government Printing Works will not be held responsible for the quality of "Hard Copies" or "Electronic Files" submitted for publication purposes



AIDS HELPLINE: 0800-0123-22 Prevention is the cure

IMPORTANT NOTICE

The Government Printing Works will not be held responsible for faxed documents not received due to errors on the fax machine or faxes received which are unclear or incomplete. Please be advised that an "OK" slip, received from a fax machine, will not be accepted as proof that documents were received by the GPW for printing. If documents are faxed to the GPW it will be the sender's responsibility to phone and confirm that the documents were received in good order.

Furthermore the Government Printing Works will also not be held responsible for cancellations and amendments which have not been done on original documents received from clients.

CONTENTS**INHOUD**

<i>No.</i>	<i>Page No.</i>	<i>Gazette No.</i>	<i>No.</i>	<i>Bladsy No.</i>	<i>Koerant No.</i>
GOVERNMENT NOTICE			GOEWERMENTSKENNISGEWING		
Transport, Department of			Vervoer, Departement van		
<i>Government Notice</i>			<i>Goewermentskennisgewing</i>		
1043		South African National Roads Agency Limited and the National Roads Act (7/1998): Declaration amendment of National Road R61 Section 6	3	35973	
			1043		Suid-Afrikaanse Nasionale Padagentskap Beperk en die Nasionale Paaie Wet (7/1998): Verklaring wysiging van Nasionale Pad R61 Seksie 6
				4	35973

GOVERNMENT NOTICE

DEPARTMENT OF TRANSPORT

No. 1043

13 December 2012

THE SOUTH AFRICAN NATIONAL ROADS AGENCY LIMITED

Registration No: 98/09584/06

DECLARATION AMENDMENT OF NATIONAL ROAD R61 SECTION 6

AMENDMENT OF DECLARATION NO. 305 OF 2009

By virtue of section 40(1)(b) of the South African National Roads Agency Limited and the National Roads Act, 1998 (Act No. 7 of 1998), I hereby amend Declaration No. 305 of 2009, by substituting sheets 1 to 30 of Plan No. P606/06, with the subjoined sheets 1 to 27 of Plan No. P786/10.

(National Road R61 Section 6: Cofimvaba – Engcobo)



MINISTER OF TRANSPORT

GOEWERMENTSKENNISGEWING

DEPARTEMENT VAN VERVOER

No. 1043

13 Desember 2012

DIE SUID-AFRIKAANSE NASIONALE PADAGENTSKAP BEPERK

Registrasie No: 98/09584/06

VERKLARING WYSIGING VAN NASIONALE PAD R61 SEKSIE 6

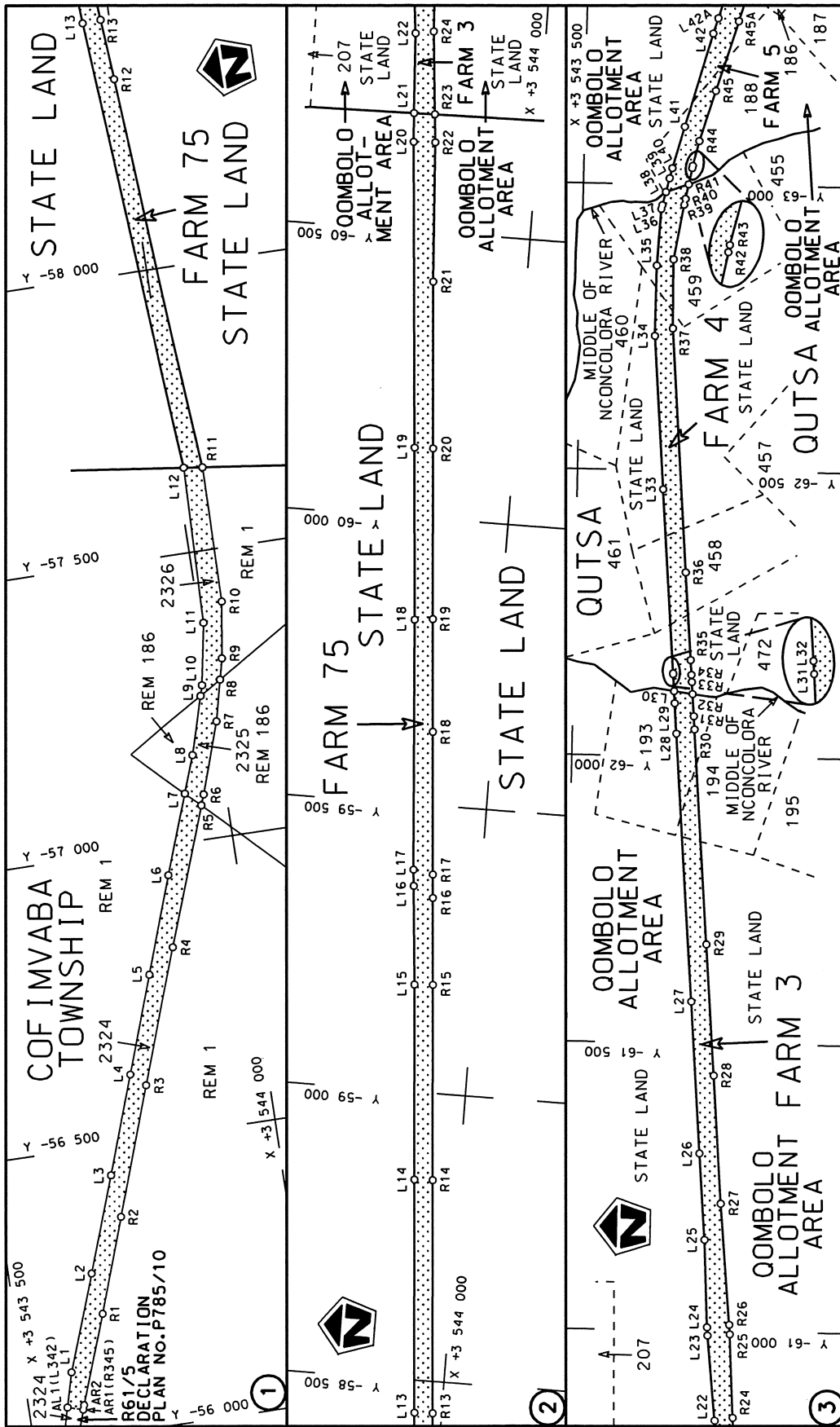
WYSIGING VAN VERKLARING NO. 305 VAN 2009

Kragtens Artikel 40(1)(b) van die Suid-Afrikaanse Nasionale Padagentskap Beperk en die Nasionale Paaie Wet, 1998 (Wet no.7 van 1998), wysig ek hiermee Verklaring no.305 van 2009, deur velle 1 tot 30 van Plan no. P606/06, te vervang met meegaande velle 1 tot 27 van Plan no. P786/10.

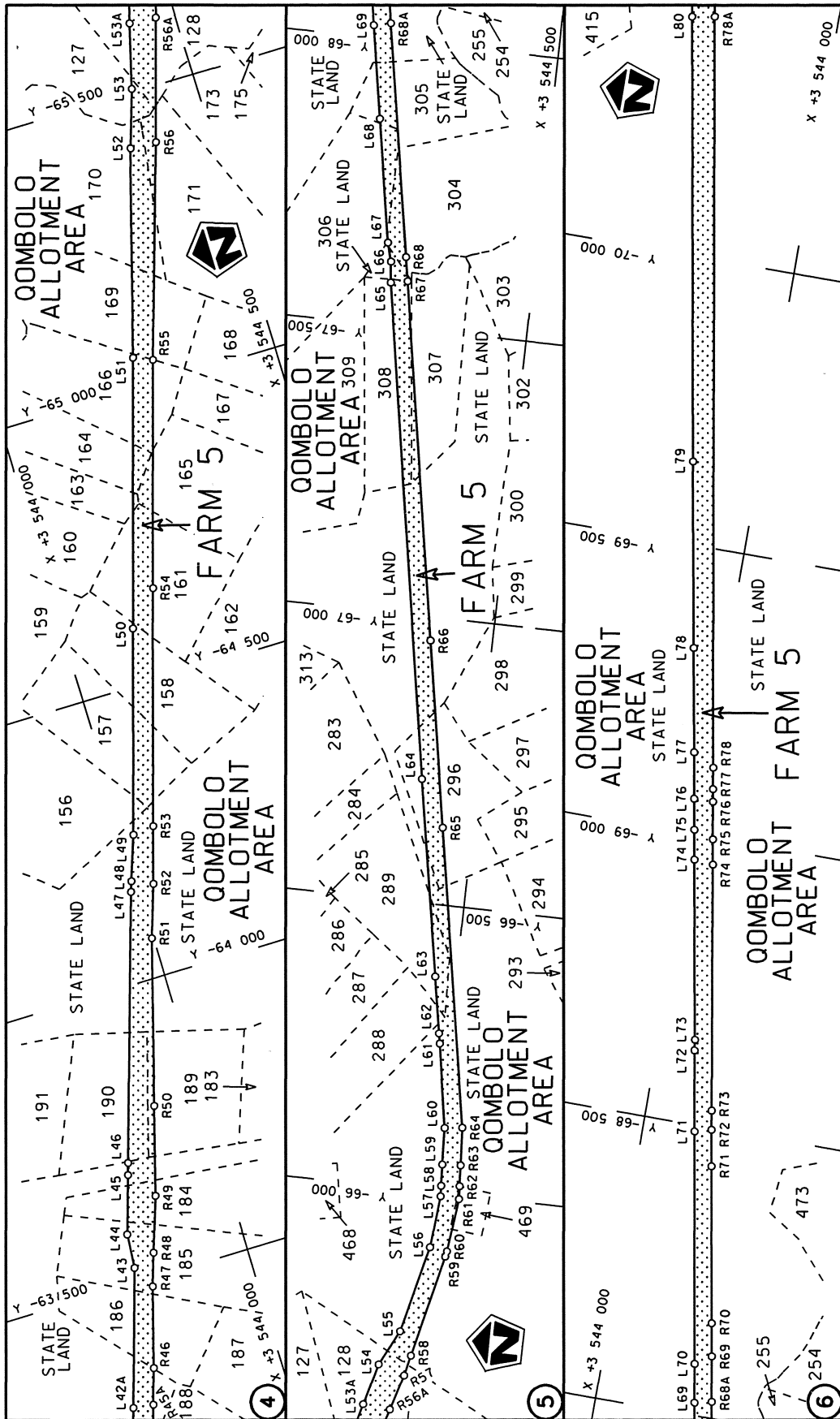
(Nasionale Pad R61 Seksie 6: Cofimvaba – Engcobo)




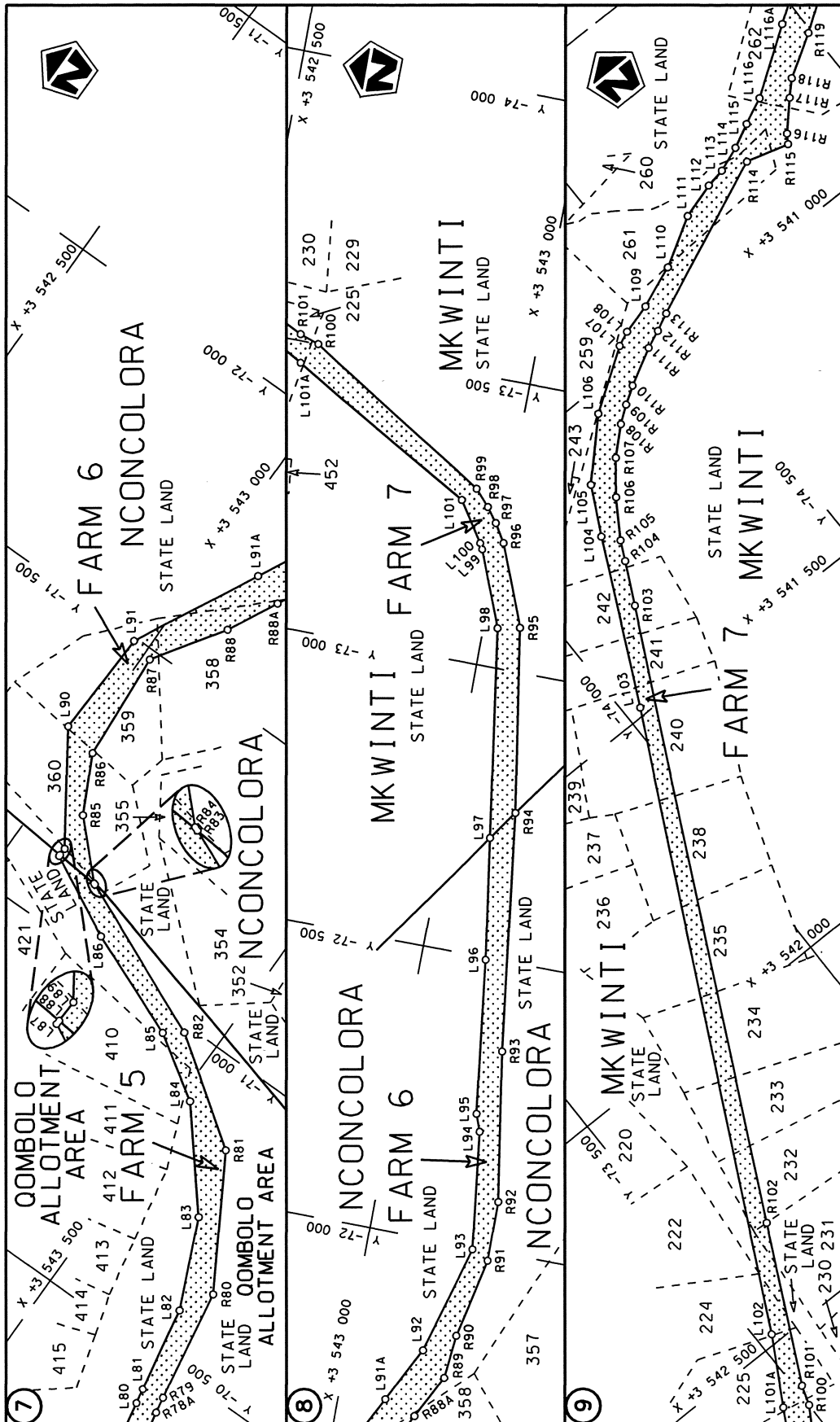
MINISTER VAN VERVOER

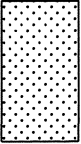


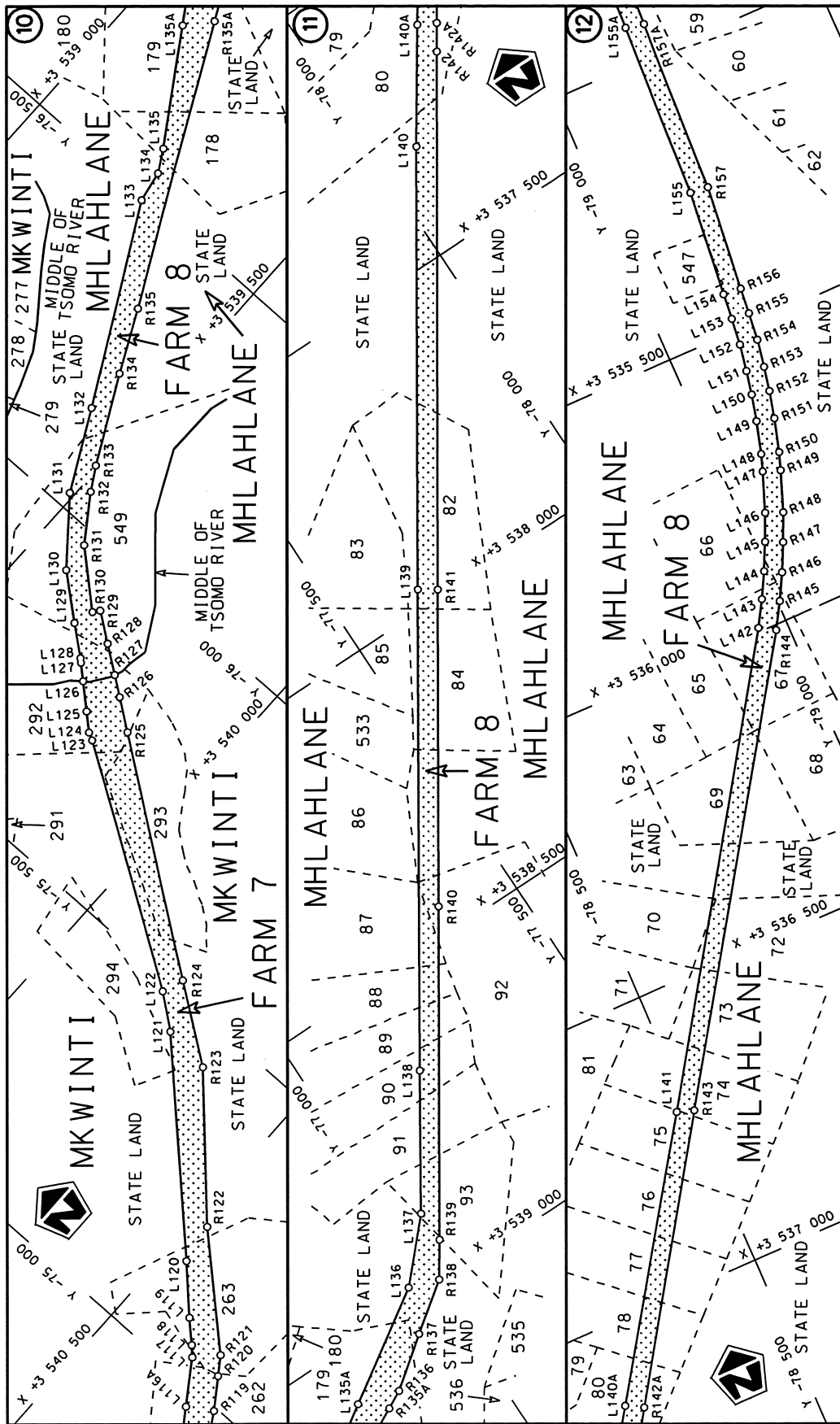
<p>Die Suid Afrikaanse Nasionale Padagentskap Beperk The South African National Roads Agency Limited</p>	<p>Die figuur getoon The figure shown</p>	<p>steldie padreserwe voor van 'n gedeelte represents the road reserve of a portion van Nasionale Roete of National Route</p>	<p>6</p>	<p>Vel Sheet 1 of 27</p>
<p>R61 Seksie Section</p>		<p>P786/10</p>		<p>Plan</p>



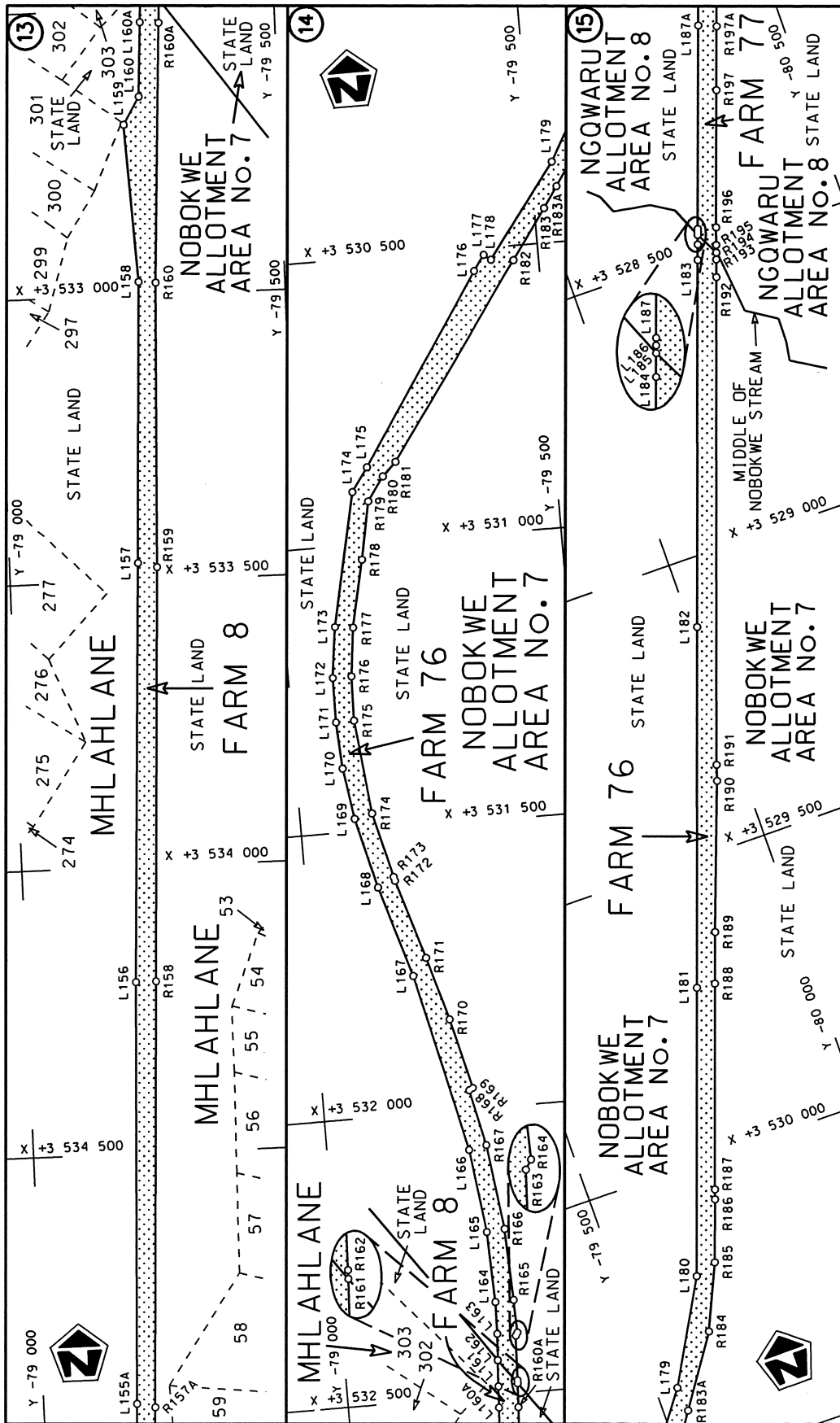
<p>Die Suid Afrikaanse Nasionale Padagentskap Beperk The South African National Roads Agency Limited</p>	<p>Die figuur getoon The figure shown</p> 	<p>steldie padreserwe voor van 'n gedeelte represents the road reserve of a portion van Nasionale Roete R61 Sektie of National Route Section</p>	<p>Vel Sheet 2 of 27</p> <p>Plan P786/10</p>
--	---	--	--

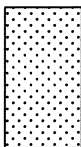


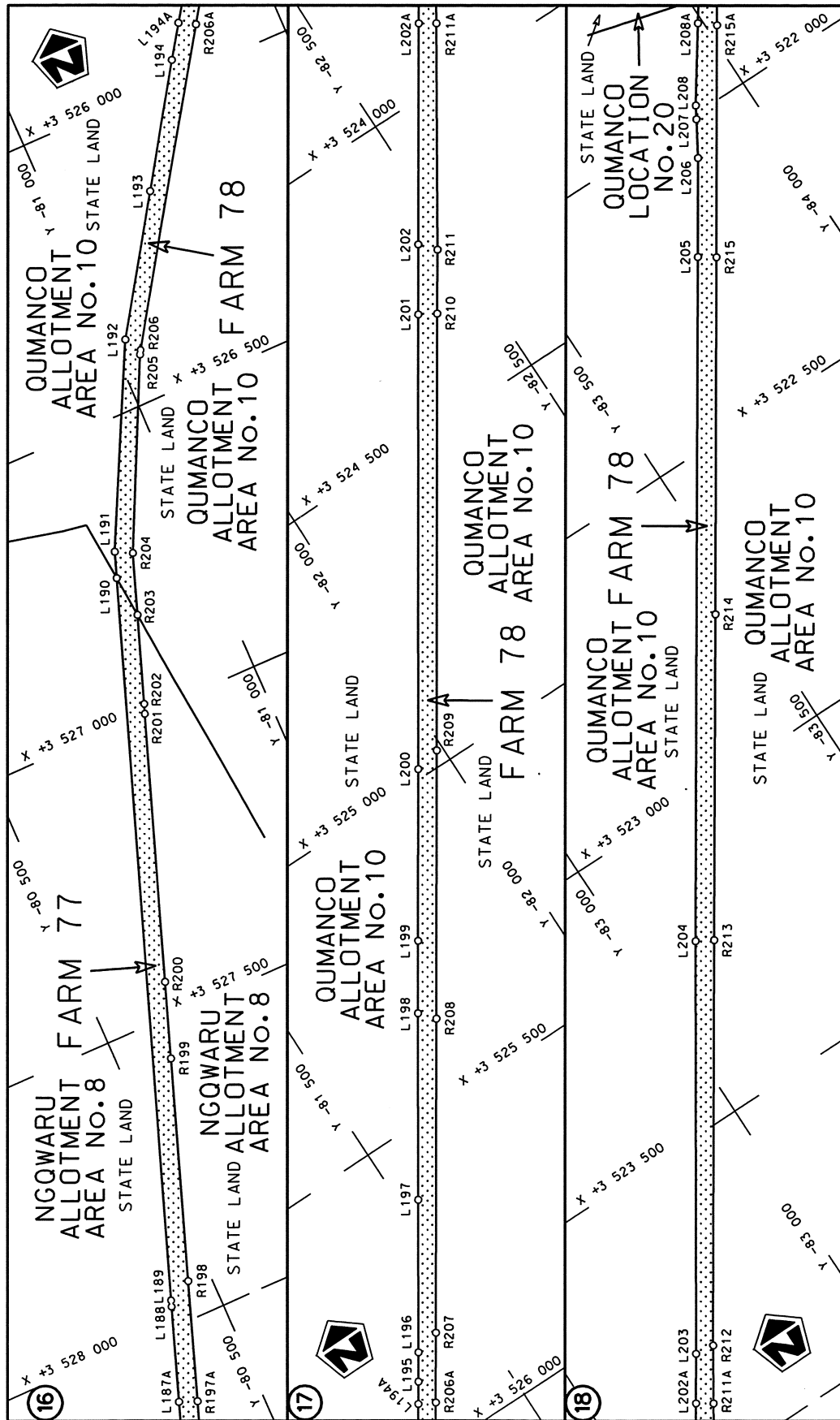
<p>Die Suid Afrikaanse Nasionale Padagentskap Beperk The South African National Roads Agency Limited</p>	<p>Die figuur getoon The figure shown</p> 	<p>steldie padreserwe voor van 'n gedeelte represents the road reserve of a portion van Nasionale Roete R61 Sektie of National Route R61 Section</p>	<p>Vel Sheet 3 of 27 Plan P786/10</p>
--	---	--	---

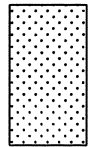


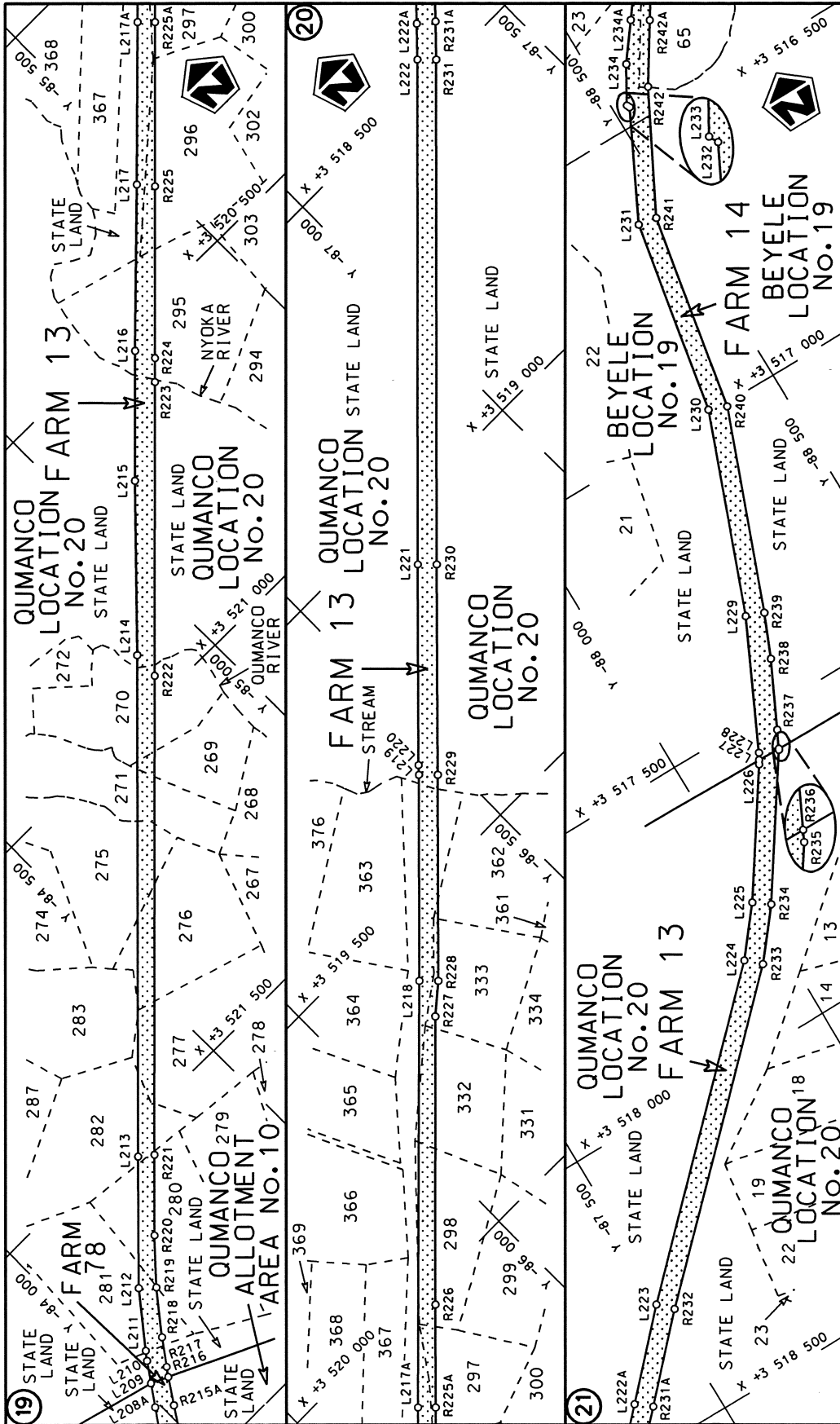
<p>Die Suid Afrikaanse Nasionale Padagentskap Beperk The South African National Roads Agency Limited</p>	<p>Die figuur getoon The figure shown</p>	<p>steedie padreserwe voor van 'n gedeelte represents the road reserve of a portion van Nasionale Roete R61 of National Route</p>	<p>Vel Sheet 4 of 27</p> <p>Plan P786/10</p>
--	---	---	--

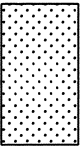


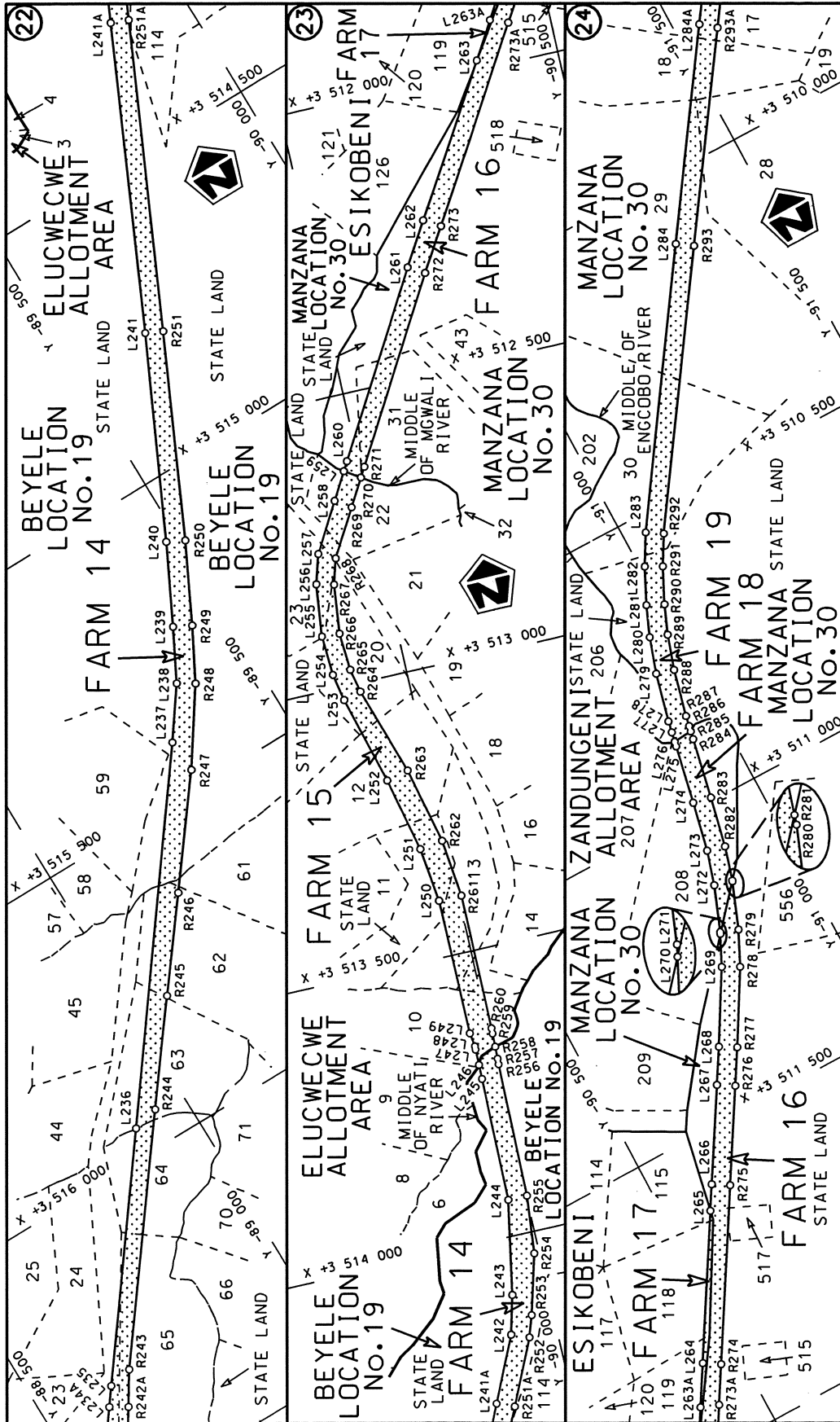
<p>Die Suid Afrikaanse Nasionale Padagentskap Beperk The South African National Roads Agency Limited</p>	<p>Die figuur getoon The figure shown</p> 	<p>stede padreserwe voor 'n gedeelte represents the road reserve of a portion van Nasionale Roete R61 of National Route</p> <p>R61 Seksie Section</p> <p>6</p>
<p>Vel Sheet</p> <p>5 of</p> <p>27</p>	<p>Plan P786/10</p>	




<p>Die Suid-Afrikaanse Nasionale Padagentskap Beperk The South African National Roads Agency Limited</p>	<p>Die figuur getoon The figure shown</p>  <p>stelt die padreserwe voor van 'n gedeelte van Nasionale Roete R61 of National Route</p>	<p>Vel Sheet 6 van 27</p> <p>Plan P786/10</p>
--	--	---



Vel Sheet 7 of 27	steldie padreserwe voor van 'n gedeelte represents the road reserve of a portion van Nasionale Roete R61 of National Route Section 6	Die Suid Afrikaanse Nasionale Padagentskap Beperk The South African National Roads Agency Limited
Plan P786/10		Die figuur getoon The figure shown



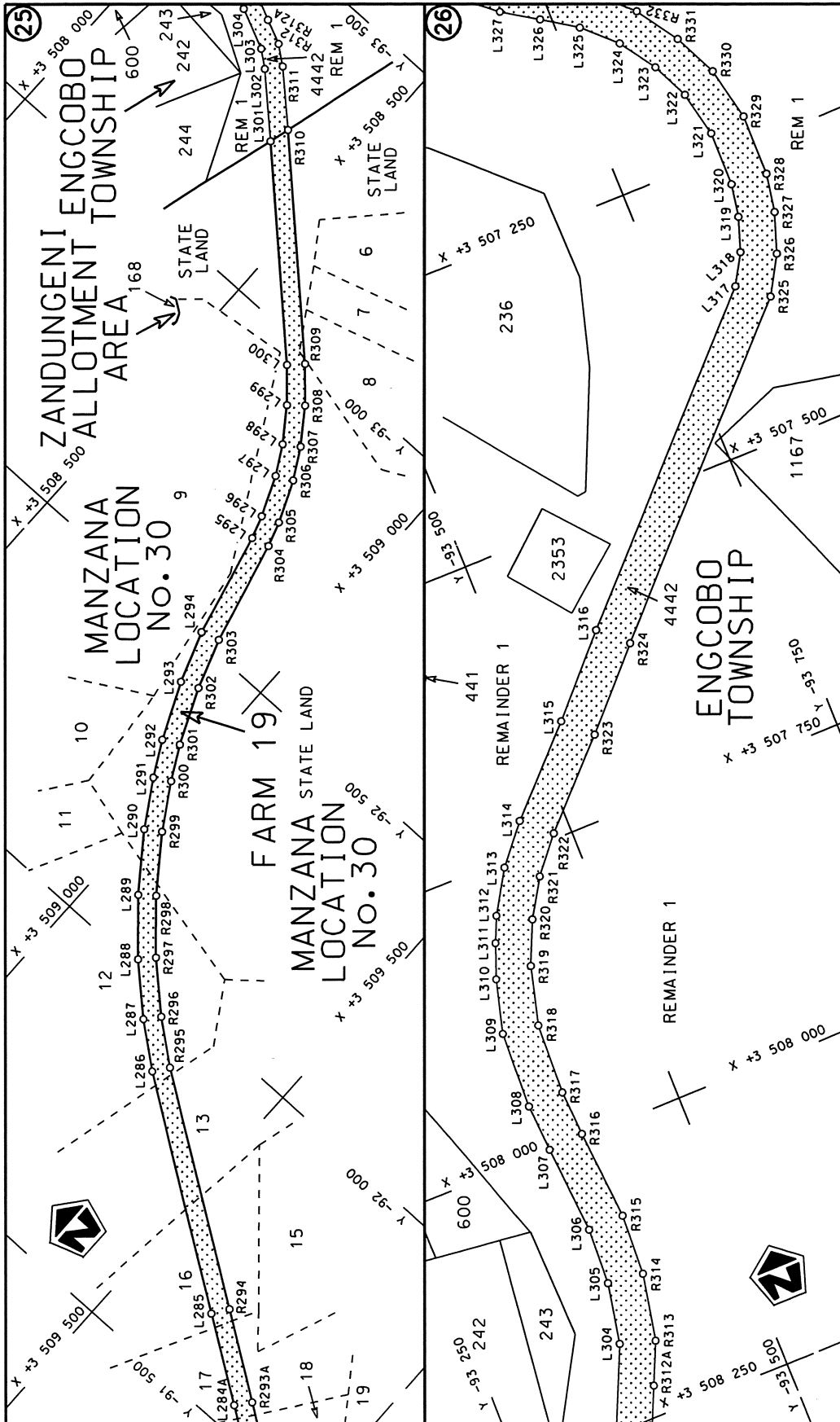
<p>Die Suid Afrikaanse Nasionale Padagentskap Beperk The South African National Roads Agency Limited</p>	<p>Die figuur getoon The figure shown</p> 	<p>steldie podreserwe voor van 'n gedeelte represents the road reserve of a portion van Nasionale Roete R61 of National Route</p>	<p>Vel Sheet 8 of 27 Plan P786/10</p>
--	---	---	---

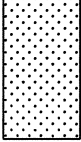
6

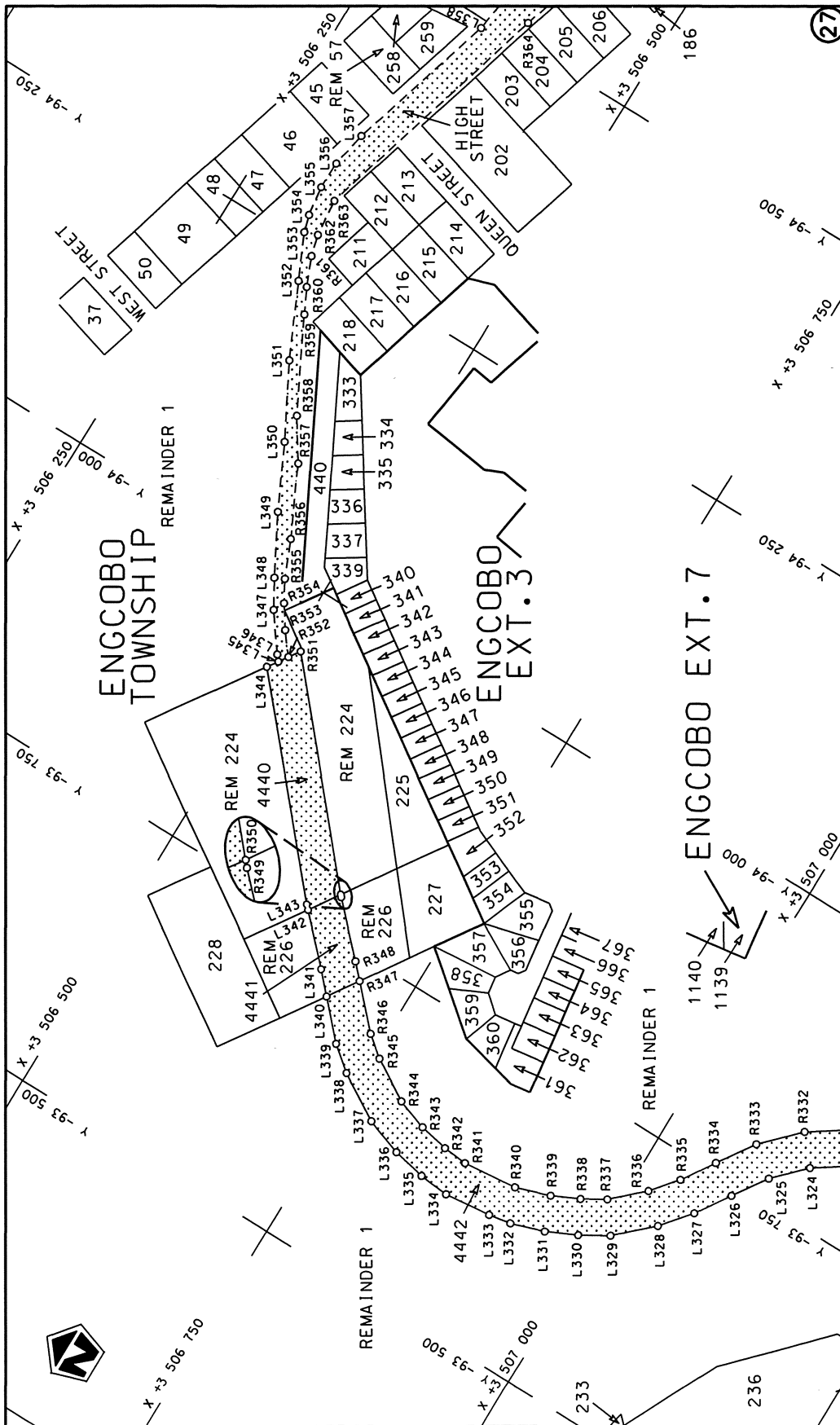
R61

Seksie

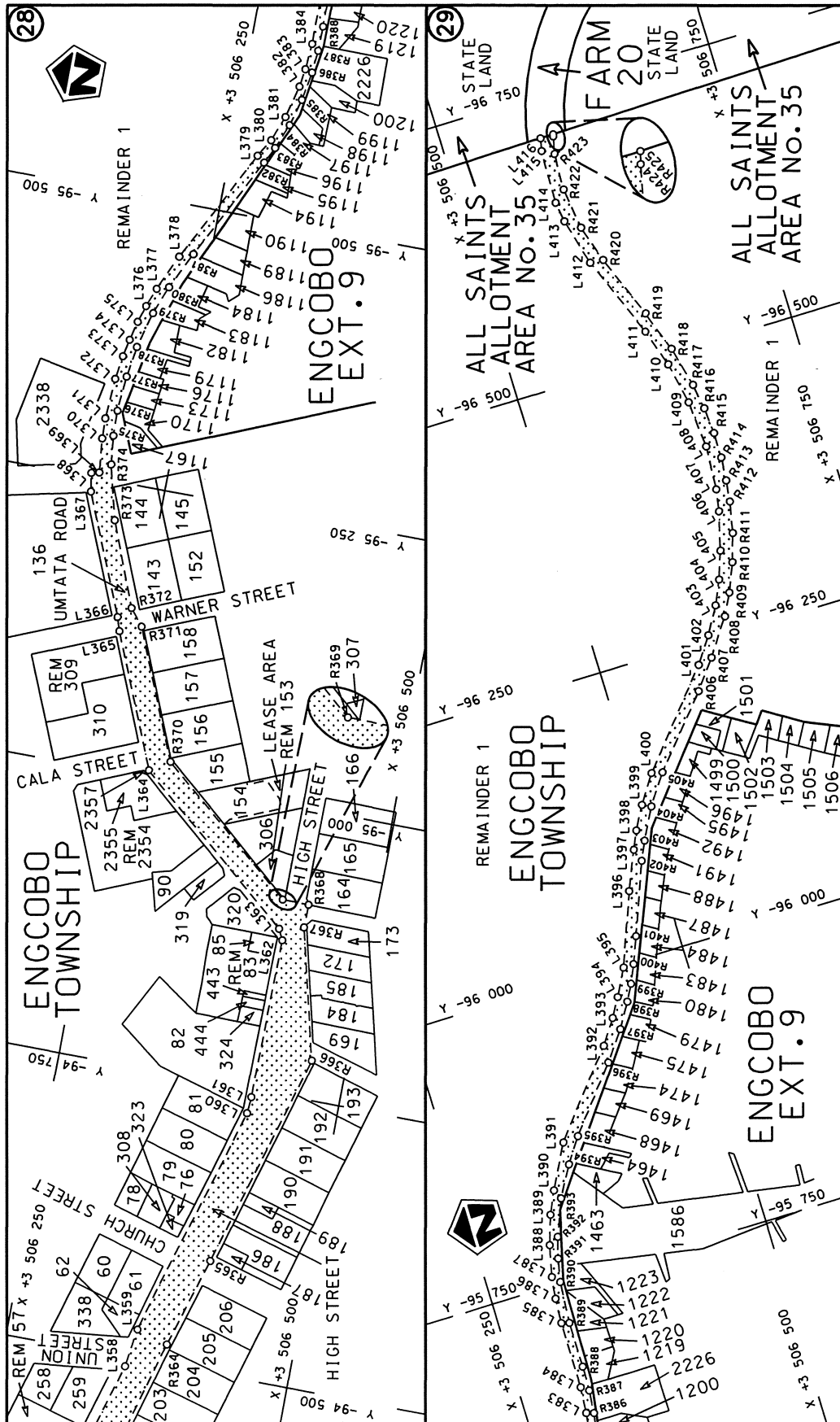
Section



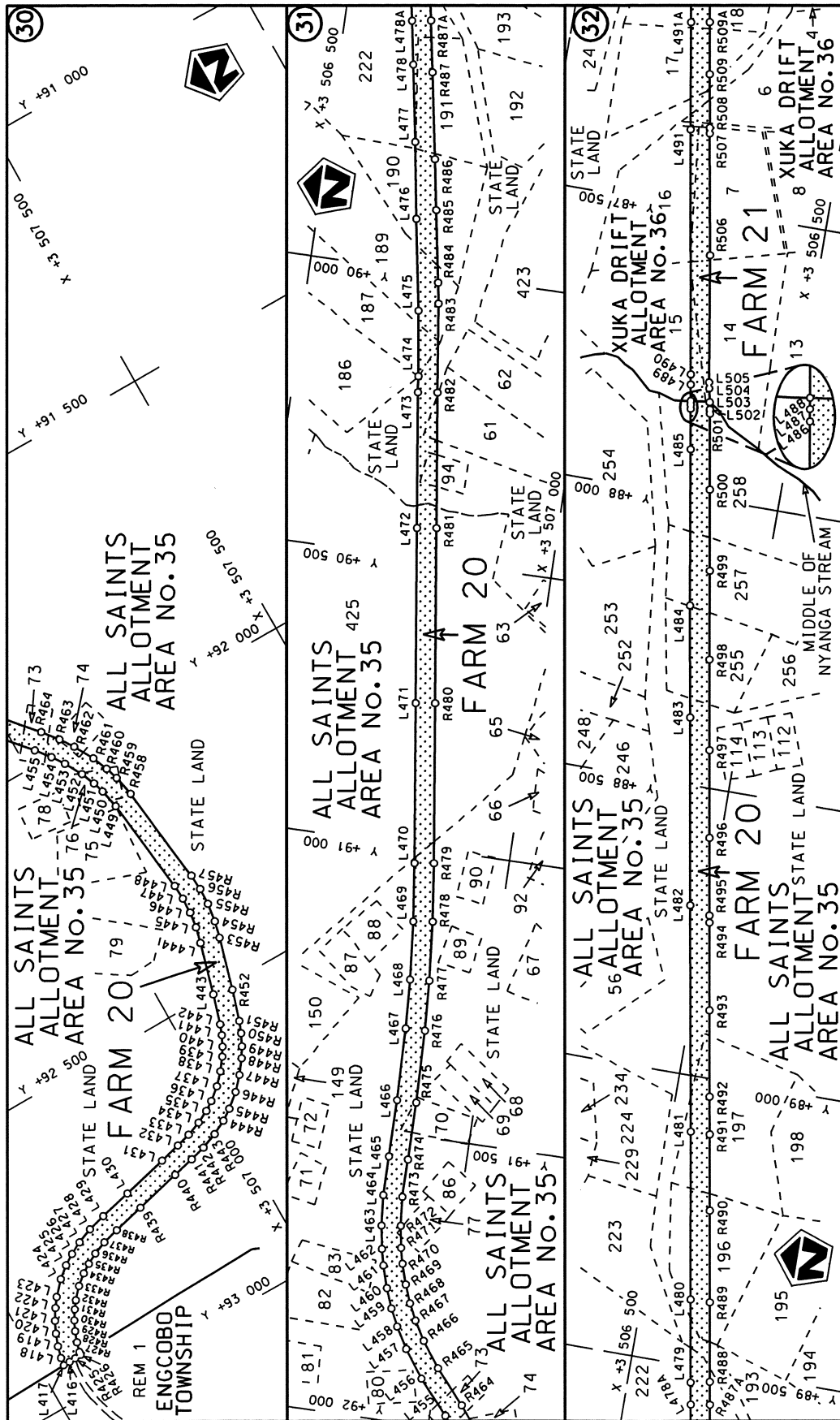
Die Suid Afrikaanse Nasionale Padagentskap Beperk The South African National Roads Agency Limited	Die figuur getoon The figure shown		steldie padreserwe voor van 'n gedeelte represents the road reserve of a portion van Nasionale Roete R61 Sektie of National Route R61 Section	
			Vel Sheet	van of

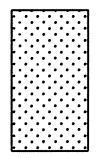


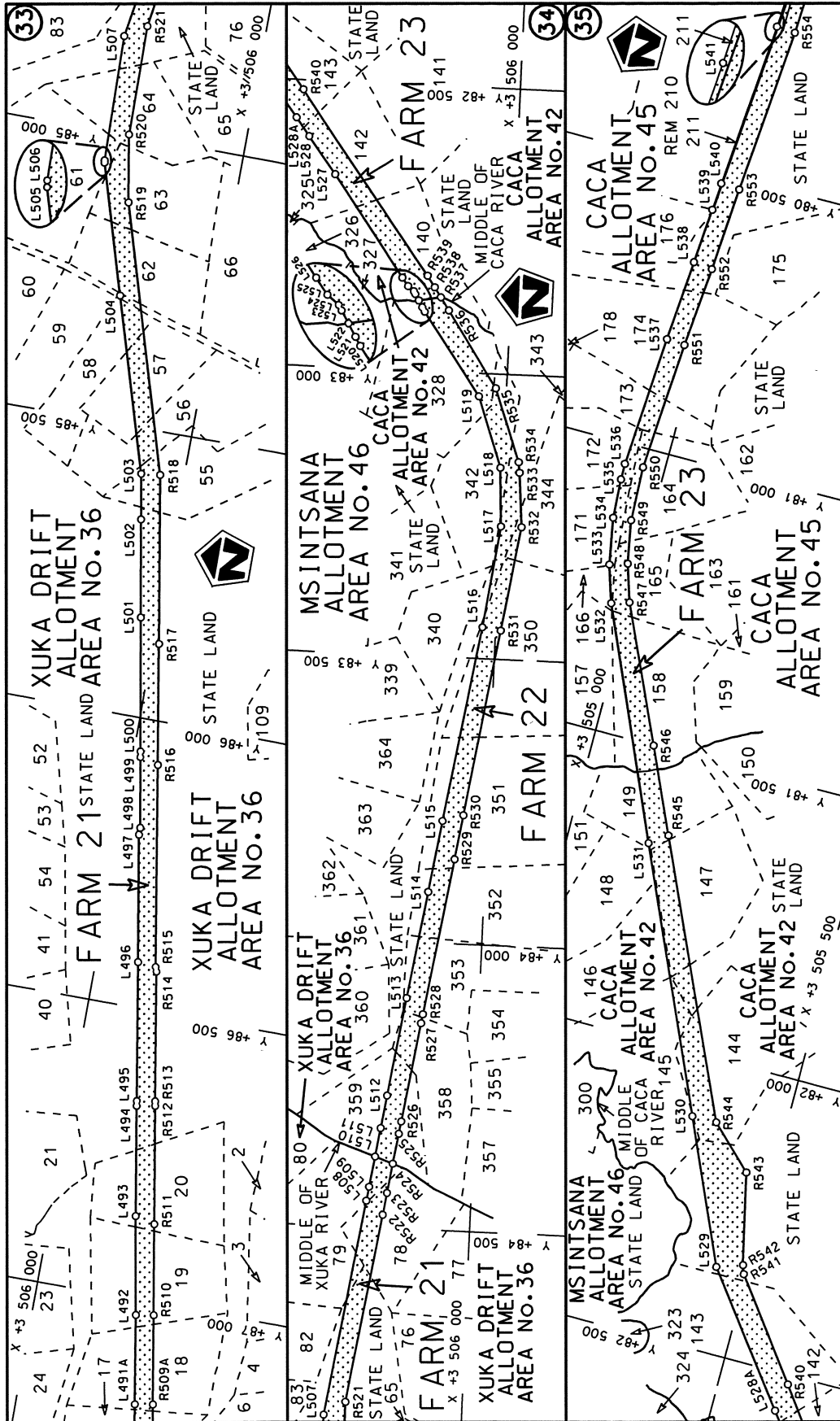
<p>Die Suid Afrikaanse Nasionale Padagentskap Beperk The South African National Roads Agency Limited</p>	<p>Die figuur getoon The figure shown</p>	<p>stel die padreserwe voor van 'n gedeelte represents the road reserve of a portion van Nasionale Roete R61 Seksie R61 Section</p>	<p>Vel Sheet 10 of 27 Plan P786/10</p>
--	---	---	--

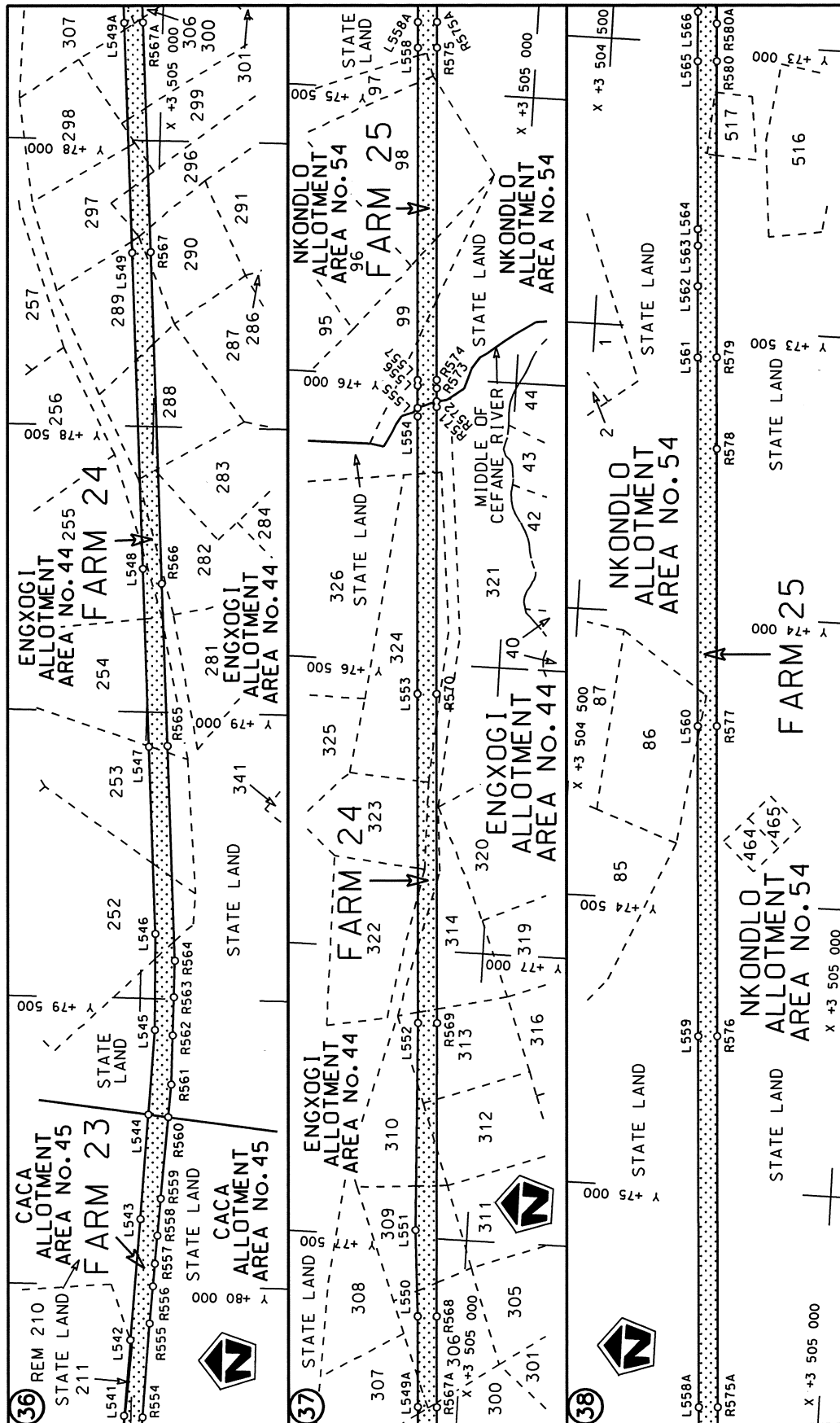


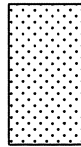
Die Suid Afrikaanse Nasionale Padagentskap Beperk The South African National Roads Agency Limited	Die figuur getoon The figure shown	stedie padreserwe voor van 'n gedeelte represents the road reserve of a portion van Nasionale Roete R61 of National Route	Vel Sheet 11 of 27 Plan P786/10
--	---------------------------------------	--	---------------------------------------

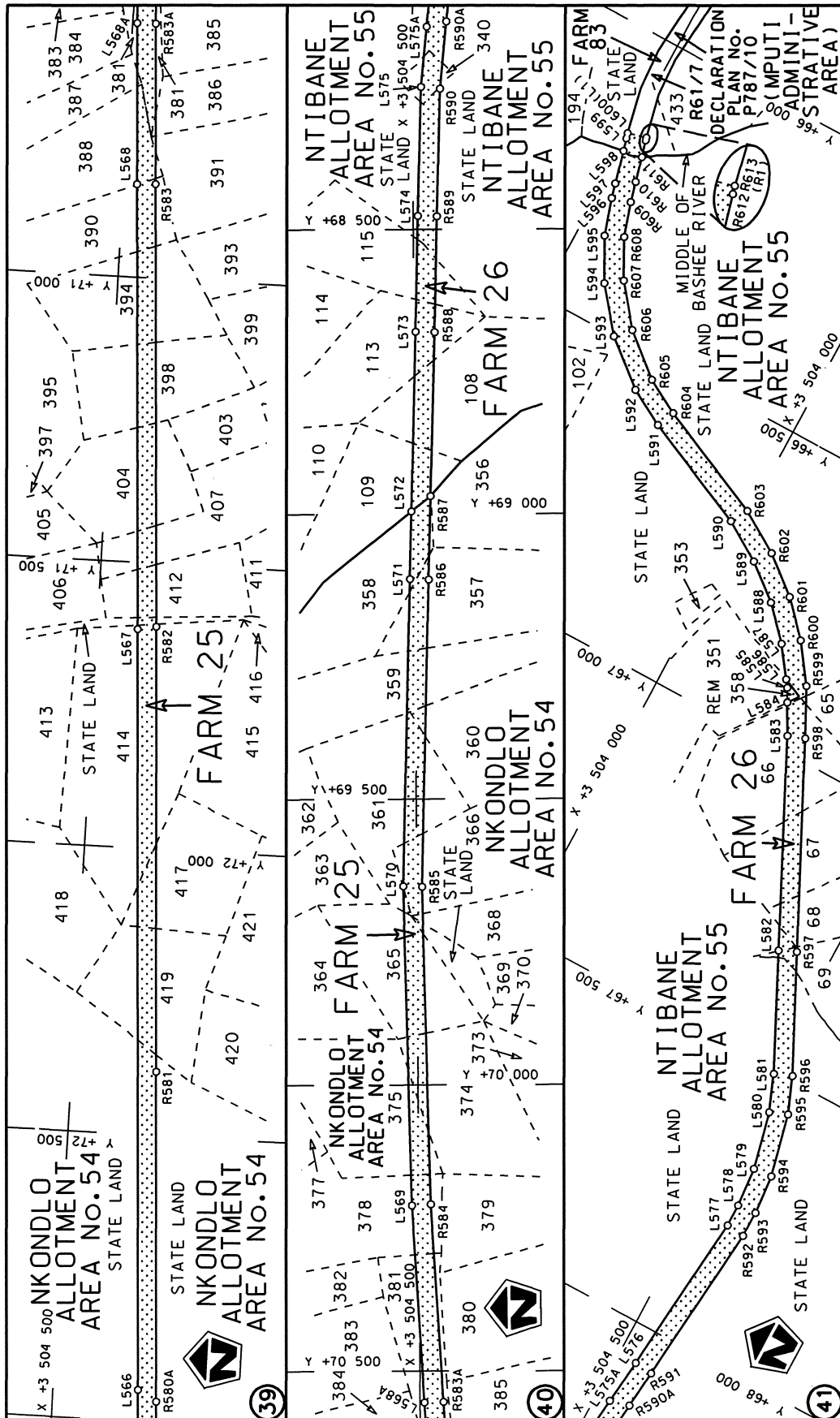


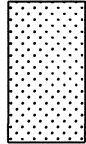
<p>Die Suid Afrikaanse Nasionale Padagentskap Beperk The South African National Roads Agency Limited</p>	<p>Die figuur getoon The figure shown</p> 	<p>stel die padreserwe voor van 'n gedeelte represents the road reserve of a portion van Nasionale Roete 6 of National Route</p>
<p>Vel Sheet 12 of 27</p>	<p>R61 Seksie 6</p>	<p>Plan P786/10</p>





<p>Die Suid Afrikaanse Nasionale Padagentskap Beperk The South African National Roads Agency Limited</p>	<p>Die figuur getoon The figure shown</p> 	<p>steldie padreserwe voor van 'n gedeelte represents the road reserve of a portion van Nasionale Roete R61 of National Route</p> <p>Seksie 6</p>	<p>Vel Sheet 14 of 27 Plan P786/10</p>
--	---	---	--



<p>Die Suid Afrikaanse Nasionale Padagentskap Beperk The South African National Roads Agency Limited</p>	<p>Die figuur getoon The figure shown</p>  <p>stelt die padreserwe voor van 'n gedeelte represents the road reserve of a portion van Nasionale Roete R61 of National Route R61</p>	<p>Vel Sheet 15 of 27</p> <p>Plan P 786/10</p>
--	---	--

PADRESERWE KOÖRDINATE				/	ROAD RESERVE CO-ORDINATES			
LINKERKANT/LEFT HAND SIDE					REGTERKANT/RIGHT HAND SIDE			
	Y	X	WG	27°	Y	X		
AL1	-56 058.92	3 543	566.85	AR1	-56 050.87	3 543	593.53	
L1	-56 118.47	3 543	583.04	AR2	-56 058.84	3 543	596.23	
L2	-56 283.56	3 543	643.61	R1	-56 211.38	3 543	652.08	
L3	-56 447.10	3 543	702.54	R2	-56 373.40	3 543	709.35	
L4	-56 615.06	3 543	762.22	R3	-56 592.61	3 543	787.53	
L5	-56 781.79	3 543	821.82	R4	-56 822.84	3 543	869.72	
L6	-56 948.26	3 543	881.04	R5	-57 060.28	3 543	954.81	
L7	-57 084.85	3 543	929.88	R6	-57 078.51	3 543	961.46	
L8	-57 149.20	3 543	952.89	R7	-57 201.21	3 544	002.27	
L9	-57 249.39	3 543	981.82	R8	-57 272.42	3 544	019.26	
L10	-57 267.48	3 543	987.05	R9	-57 308.72	3 544	027.92	
L11	-57 374.99	3 544	005.82	R10	-57 407.04	3 544	042.38	
L12	-57 648.62	3 544	012.85	R11	-57 644.63	3 544	044.46	
L13	-58 443.37	3 543	952.84	R12	-58 338.56	3 543	992.52	
L14	-58 848.07	3 543	922.36	R13	-58 444.76	3 543	984.47	
L15	-59 186.31	3 543	897.08	R14	-58 849.69	3 543	954.11	
L16	-59 357.76	3 543	882.91	R15	-59 188.22	3 543	928.82	
L17	-59 386.04	3 543	880.47	R16	-59 339.42	3 543	917.46	
L18	-59 821.31	3 543	849.40	R17	-59 380.05	3 543	914.49	
L19	-60 121.89	3 543	826.54	R18	-59 628.24	3 543	895.67	
L20	-60 654.85	3 543	784.12	R19	-59 824.61	3 543	880.78	
L21	-60 705.17	3 543	780.79	R20	-60 122.76	3 543	858.52	
L22	-60 844.43	3 543	772.81	R21	-60 413.76	3 543	836.62	
L23	-60 992.47	3 543	757.55	R22	-60 656.70	3 543	821.50	
L24	-61 006.82	3 543	756.41	R23	-60 705.75	3 543	817.09	
L25	-61 159.00	3 543	749.01	R24	-60 850.06	3 543	804.06	
L26	-61 309.29	3 543	737.35	R25	-60 995.44	3 543	796.19	
L27	-61 572.71	3 543	717.82	R26	-61 012.03	3 543	794.82	
L28	-62 039.38	3 543	682.55	R27	-61 222.50	3 543	775.86	
L29	-62 092.36	3 543	678.66	R28	-61 444.84	3 543	759.33	
L30	-62 113.55	3 543	677.13	R29	-61 672.71	3 543	742.08	
L31	-62 143.13	3 543	674.94	R30	-62 047.45	3 543	713.87	
L32	-62 144.66	3 543	674.82	R31	-62 070.40	3 543	712.13	
L33	-62 466.45	3 543	650.70	R32	-62 108.97	3 543	709.17	
L34	-62 734.61	3 543	630.67	R33	-62 130.11	3 543	707.55	
L35	-62 857.60	3 543	631.47	R34	-62 142.62	3 543	706.61	
L36	-62 956.55	3 543	637.27	R35	-62 168.46	3 543	704.78	
L37	-62 963.50	3 543	639.00	R36	-62 321.43	3 543	693.11	
L38	-62 986.44	3 543	644.70	R37	-62 748.11	3 543	661.89	
L39	-63 010.58	3 543	650.64	R38	-62 868.81	3 543	660.46	
L40	-63 028.22	3 543	654.99	R39	-62 964.62	3 543	677.00	
L41	-63 101.07	3 543	675.14	R40	-62 975.16	3 543	679.03	
L42	-63 265.25	3 543	720.80	R41	-63 000.52	3 543	683.93	
L43	-63 526.31	3 543	801.50	R42	-63 029.16	3 543	689.41	
L44	-63 586.03	3 543	806.03	R43	-63 033.35	3 543	690.21	
L45	-63 684.89	3 543	836.87	R44	-63 076.67	3 543	700.77	
L46	-63 705.07	3 543	843.05	R45	-63 165.11	3 543	727.46	
L47	-64 157.20	3 543	984.15	R46	-63 348.63	3 543	783.76	
L48	-64 174.93	3 543	990.28	R47	-63 485.91	3 543	823.27	
L49	-64 251.74	3 544	017.18	R48	-63 541.83	3 543	841.73	
L50	-64 598.34	3 544	120.30	R49	-63 635.90	3 543	873.44	

Vel	16	Van	27	P786/10
Sheet		of		

PADRESERWE KOÖRDINATE				/	ROAD RESERVE CO-ORDINATES			
LINKERKANT/LEFT HAND SIDE					REGTERKANT/RIGHT HAND SIDE			
	YY	X	WG	27°	Y	X		
L51	-65 054.12	3 544	256.77	R50	-63 786.85	3 543	916.48	
L52	-65 407.48	3 544	357.53	R51	-64 068.43	3 543	996.66	
L53	-65 506.79	3 544	389.77	R52	-64 159.11	3 544	026.43	
L54	-65 690.41	3 544	438.02	R53	-64 255.93	3 544	055.40	
L55	-65 752.08	3 544	469.54	R54	-64 655.85	3 544	174.61	
L56	-65 903.80	3 544	506.30	R55	-65 040.49	3 544	289.73	
L57	-65 994.18	3 544	514.63	R56	-65 404.74	3 544	403.92	
L58	-66 012.58	3 544	513.62	R57	-65 675.83	3 544	484.92	
L59	-66 049.65	3 544	511.68	R58	-65 711.70	3 544	493.15	
L60	-66 113.41	3 544	508.81	R59	-65 890.24	3 544	534.39	
L61	-66 259.10	3 544	484.16	R60	-65 899.97	3 544	536.38	
L62	-66 276.60	3 544	480.81	R61	-65 992.86	3 544	547.01	
L63	-66 374.71	3 544	463.60	R62	-66 015.28	3 544	545.71	
L64	-66 716.03	3 544	402.94	R63	-66 051.69	3 544	543.57	
L65	-67 576.56	3 544	251.93	R64	-66 117.23	3 544	539.54	
L66	-67 613.32	3 544	248.34	R65	-66 635.02	3 544	447.91	
L67	-67 645.63	3 544	239.55	R66	-66 958.83	3 544	391.19	
L68	-67 860.43	3 544	201.24	R67	-67 582.03	3 544	281.21	
L69	-68 022.12	3 544	172.77	R68	-67 623.96	3 544	274.00	
L70	-68 089.21	3 544	161.05	R69	-68 107.30	3 544	188.27	
L71	-68 489.27	3 544	090.88	R70	-68 164.36	3 544	178.17	
L72	-68 628.28	3 544	066.10	R71	-68 434.55	3 544	130.30	
L73	-68 646.67	3 544	063.67	R72	-68 497.27	3 544	119.54	
L74	-68 956.89	3 544	008.29	R73	-68 530.15	3 544	114.03	
L75	-69 008.41	3 543	999.03	R74	-68 953.94	3 544	041.25	
L76	-69 061.97	3 543	989.47	R75	-68 997.67	3 544	033.78	
L77	-69 141.93	3 543	975.13	R76	-69 062.70	3 544	022.54	
L78	-69 321.87	3 543	942.70	R77	-69 084.24	3 544	018.81	
L79	-69 644.35	3 543	884.22	R78	-69 121.35	3 544	012.43	
L80	-70 413.37	3 543	746.80	R79	-70 448.41	3 543	780.38	
L81	-70 439.68	3 543	742.01	R80	-70 645.52	3 543	745.95	
L82	-70 589.10	3 543	715.15	R81	-70 862.59	3 543	618.21	
L83	-70 740.34	3 543	647.39	R82	-70 987.89	3 543	441.09	
L84	-70 896.00	3 543	518.85	R83	-71 106.94	3 543	162.70	
L85	-70 965.62	3 543	410.93	R84	-71 107.89	3 543	160.48	
L86	-71 039.53	3 543	224.00	R85	-71 193.56	3 543	075.59	
L87	-71 111.38	3 543	082.73	R86	-71 291.63	3 543	026.05	
L88	-71 113.78	3 543	082.83	R87	-71 483.09	3 543	013.59	
L89	-71 127.31	3 543	083.42	R88	-71 604.17	3 543	093.38	
L90	-71 305.10	3 542	964.08	R89	-71 766.76	3 543	175.49	
L91	-71 493.40	3 542	971.75	R90	-71 843.01	3 543	182.83	
L92	-71 807.44	3 543	130.45	R91	-71 982.06	3 543	213.79	
L93	-71 996.63	3 543	183.40	R92	-72 086.09	3 543	213.14	
L94	-72 200.01	3 543	157.80	R93	-72 344.67	3 543	171.01	
L95	-72 229.71	3 543	146.54	R94	-72 757.87	3 543	116.09	
L96	-72 496.41	3 543	112.53	R95	-73 077.42	3 543	063.51	
L97	-72 706.75	3 543	080.48	R96	-73 218.05	3 543	007.35	
L98	-73 069.43	3 543	025.23	R97	-73 249.89	3 542	987.39	
L99	-73 200.04	3 542	972.11	R98	-73 275.14	3 542	968.30	
L100	-73 210.33	3 542	966.58	R99	-73 302.78	3 542	942.49	
L101	-73 278.62	3 542	920.21	R100	-73 500.06	3 542	621.63	
				Vel	17	Van	27	P786/10
				Sheet		of		

PADRESERWE KOÖRDINATE				/	ROAD RESERVE CO-ORDINATES			
LINKERKANT/LEFT HAND SIDE					REGTERKANT/RIGHT HAND SIDE			
	Y	X	WG	27°	Y	X		
L102	-73 525.82	3 542	483.90	R101	-73 511.21	3 542	587.33	
L103	-74 027.71	3 541	486.29	R102	-73 640.13	3 542	326.58	
L104	-74 161.57	3 541	209.65	R103	-74 131.65	3 541	340.60	
L105	-74 204.17	3 541	127.49	R104	-74 166.85	3 541	269.22	
L106	-74 291.54	3 541	037.79	R105	-74 183.45	3 541	235.75	
L107	-74 394.88	3 540	968.16	R106	-74 224.69	3 541	171.65	
L108	-74 420.36	3 540	956.88	R107	-74 267.13	3 541	117.11	
L109	-74 472.90	3 540	942.36	R108	-74 310.85	3 541	076.55	
L110	-74 546.95	3 540	913.75	R109	-74 339.42	3 541	055.51	
L111	-74 629.90	3 540	865.39	R110	-74 369.13	3 541	036.43	
L112	-74 692.00	3 540	846.08	R111	-74 432.48	3 541	002.91	
L113	-74 725.94	3 540	839.98	R112	-74 463.99	3 540	990.08	
L114	-74 769.12	3 540	823.16	R113	-74 494.26	3 540	975.02	
L115	-74 810.23	3 540	802.79	R114	-74 769.62	3 540	854.69	
L116	-74 855.97	3 540	781.49	R115	-74 844.31	3 540	875.43	
L117	-75 039.39	3 540	655.69	R116	-74 854.61	3 540	859.74	
L118	-75 055.00	3 540	640.70	R117	-74 897.30	3 540	813.68	
L119	-75 088.24	3 540	606.03	R118	-74 921.57	3 540	789.07	
L120	-75 158.78	3 540	536.63	R119	-74 994.12	3 540	745.77	
L121	-75 439.04	3 540	250.83	R120	-75 044.57	3 540	710.81	
L122	-75 482.69	3 540	193.90	R121	-75 074.75	3 540	689.66	
L123	-75 727.95	3 539	809.23	R122	-75 226.85	3 540	523.63	
L124	-75 734.52	3 539	796.04	R123	-75 429.69	3 540	333.52	
L125	-75 759.33	3 539	768.39	R124	-75 520.24	3 540	207.22	
L126	-75 794.81	3 539	728.83	R125	-75 779.56	3 539	846.11	
L127	-75 816.59	3 539	704.52	R126	-75 816.27	3 539	795.01	
L128	-75 822.13	3 539	698.34	R127	-75 839.52	3 539	762.69	
L129	-75 861.25	3 539	649.66	R128	-75 872.46	3 539	716.88	
L130	-75 921.04	3 539	577.34	R129	-75 907.08	3 539	668.70	
L131	-76 026.50	3 539	491.84	R130	-75 896.17	3 539	660.41	
L132	-76 162.85	3 539	421.31	R131	-75 974.34	3 539	571.54	
L133	-76 493.05	3 539	245.08	R132	-76 052.06	3 539	517.84	
L134	-76 547.60	3 539	235.76	R133	-76 092.32	3 539	494.00	
L135	-76 586.19	3 539	214.21	R134	-76 240.17	3 539	417.60	
L136	-76 956.60	3 538	974.83	R135	-76 346.91	3 539	366.51	
L137	-77 046.21	3 538	879.52	R136	-76 842.76	3 539	115.94	
L138	-77 182.09	3 538	670.65	R137	-76 927.29	3 539	052.45	
L139	-77 643.80	3 537	967.66	R138	-77 008.85	3 538	992.75	
L140	-78 070.17	3 537	318.50	R139	-77 047.90	3 538	935.15	
L141	-78 479.73	3 536	709.11	R140	-77 367.57	3 538	449.88	
L142	-78 951.17	3 535	992.61	R141	-77 672.51	3 537	986.97	
L143	-78 976.95	3 535	949.06	R142	-78 191.49	3 537	199.14	
L144	-79 000.31	3 535	905.80	R143	-78 508.93	3 536	718.83	
L145	-79 022.79	3 535	859.15	R144	-78 978.28	3 536	008.66	
L146	-79 043.41	3 535	812.61	R145	-79 004.37	3 535	964.57	
L147	-79 068.66	3 535	744.44	R146	-79 028.37	3 535	920.13	
L148	-79 078.58	3 535	715.41	R147	-79 051.38	3 535	872.37	
L149	-79 094.32	3 535	659.21	R148	-79 072.61	3 535	824.47	
L150	-79 105.55	3 535	613.15	R149	-79 098.33	3 535	755.01	
L151	-79 113.74	3 535	571.61	R150	-79 108.68	3 535	724.76	
L152	-79 121.89	3 535	524.63	R151	-79 124.79	3 535	667.20	

Vel	18	Van	27	P786/10
Sheet		of		

PADRESERWE KOÖRDINATE				/	ROAD RESERVE CO-ORDINATES			
LINKERKANT/LEFT HAND SIDE					REGTERKANT/RIGHT HAND SIDE			
	Y	X	WG	27°	Y	X		
L153	-79 127.14	3 535	477.58	R152	-79 136.32	3 535	619.93	
L154	-79 131.29	3 535	432.45	R153	-79 144.72	3 535	577.34	
L155	-79 150.60	3 535	246.47	R154	-79 153.09	3 535	529.07	
L156	-79 190.73	3 534	201.22	R155	-79 158.48	3 535	480.77	
L157	-79 224.17	3 533	469.12	R156	-79 162.64	3 535	435.52	
L158	-79 244.78	3 532	976.61	R157	-79 181.93	3 535	249.72	
L159	-79 229.04	3 532	700.37	R158	-79 226.91	3 534	201.21	
L160	-79 257.65	3 532	652.66	R159	-79 257.95	3 533	477.54	
L161	-79 266.78	3 532	485.57	R160	-79 275.26	3 532	979.05	
L162	-79 269.58	3 532	439.88	R161	-79 300.61	3 532	482.91	
L163	-79 272.40	3 532	393.90	R162	-79 300.83	3 532	477.81	
L164	-79 273.72	3 532	338.19	R163	-79 304.16	3 532	399.99	
L165	-79 268.63	3 532	215.20	R164	-79 307.72	3 532	394.32	
L166	-79 248.83	3 532	070.01	R165	-79 305.68	3 532	337.18	
L167	-79 176.85	3 531	760.09	R166	-79 300.54	3 532	212.37	
L168	-79 128.28	3 531	600.87	R167	-79 280.34	3 532	064.22	
L169	-79 097.48	3 531	477.80	R168	-79 257.68	3 531	966.66	
L170	-79 083.76	3 531	388.63	R169	-79 264.67	3 531	963.07	
L171	-79 078.80	3 531	307.22	R170	-79 233.40	3 531	840.58	
L172	-79 079.41	3 531	229.32	R171	-79 201.67	3 531	730.33	
L173	-79 090.94	3 531	140.60	R172	-79 158.86	3 531	591.44	
L174	-79 141.29	3 530	907.25	R173	-79 157.20	3 531	584.32	
L175	-79 170.36	3 530	865.86	R174	-79 128.75	3 531	470.95	
L176	-79 385.42	3 530	538.87	R175	-79 110.83	3 531	306.65	
L177	-79 404.86	3 530	512.11	R176	-79 112.76	3 531	229.14	
L178	-79 417.23	3 530	521.76	R177	-79 122.72	3 531	144.33	
L179	-79 537.11	3 530	359.05	R178	-79 148.16	3 531	026.89	
L180	-79 633.72	3 530	186.41	R179	-79 167.48	3 530	925.64	
L181	-79 800.93	3 529	712.72	R180	-79 196.55	3 530	884.25	
L182	-80 010.73	3 529	117.93	R181	-79 220.73	3 530	860.54	
L183	-80 224.65	3 528	511.06	R182	-79 456.35	3 530	525.65	
L184	-80 233.66	3 528	485.50	R183	-79 516.85	3 530	439.32	
L185	-80 239.22	3 528	469.70	R184	-79 621.68	3 530	284.51	
L186	-80 241.02	3 528	464.59	R185	-79 671.32	3 530	174.14	
L187	-80 242.76	3 528	459.67	R186	-79 708.35	3 530	070.58	
L188	-80 417.33	3 527	965.98	R187	-79 713.87	3 530	054.20	
L189	-80 420.88	3 527	955.66	R188	-79 833.02	3 529	716.15	
L190	-80 842.57	3 526	760.66	R189	-79 863.06	3 529	631.38	
L191	-80 858.02	3 526	716.89	R190	-79 954.00	3 529	383.19	
L192	-81 025.36	3 526	382.99	R191	-79 962.61	3 529	356.45	
L193	-81 170.50	3 526	162.52	R192	-80 245.43	3 528	550.03	
L194	-81 298.24	3 525	967.14	R193	-80 255.46	3 528	520.77	
L195	-81 356.47	3 525	879.77	R194	-80 259.37	3 528	509.35	
L196	-81 384.71	3 525	836.86	R195	-80 263.60	3 528	497.01	
L197	-81 530.88	3 525	613.70	R196	-80 273.66	3 528	467.65	
L198	-81 709.30	3 525	341.41	R197	-80 353.83	3 528	240.87	
L199	-81 779.09	3 525	235.46	R198	-80 461.38	3 527	936.70	
L200	-81 944.42	3 524	984.26	R199	-80 591.16	3 527	569.33	
L201	-82 382.25	3 524	316.56	R200	-80 635.79	3 527	442.80	
L202	-82 449.62	3 524	213.77	R201	-80 792.16	3 526	998.55	
L203	-82 710.45	3 523	817.30	R202	-80 798.21	3 526	982.33	

Vel	19	Van	27	P786/10
Sheet		of		

PADRESERWE KOÖRDINATE				/	ROAD RESERVE CO-ORDINATES				
LINKERKANT/LEFT HAND SIDE					REGTERKANT/RIGHT HAND SIDE				
	Y	X	WG	27°	Y	X			
L204	-83 105.51	3 523 214.29		R203	-80 850.23	3 526 834.63			
L205	-83 766.96	3 522 212.42		R204	-80 886.46	3 526 731.79			
L206	-83 862.17	3 522 067.23		R205	-81 038.50	3 526 417.57			
L207	-83 897.26	3 522 008.70		R206	-81 042.69	3 526 410.66			
L208	-83 909.49	3 521 987.89		R207	-81 428.54	3 525 824.56			
L209	-84 015.49	3 521 834.33		R208	-81 730.62	3 525 366.66			
L210	-84 038.03	3 521 801.67		R209	-81 988.97	3 524 974.42			
L211	-84 048.80	3 521 787.55		R210	-82 410.30	3 524 333.32			
L212	-84 117.06	3 521 701.33		R211	-82 472.24	3 524 239.77			
L213	-84 277.42	3 521 538.37		R212	-82 743.23	3 523 821.33			
L214	-84 891.48	3 520 916.80		R213	-83 133.35	3 523 230.44			
L215	-85 103.33	3 520 697.08		R214	-83 448.29	3 522 754.33			
L216	-85 263.51	3 520 535.79		R215	-83 793.61	3 522 230.38			
L217	-85 470.00	3 520 331.50		R216	-84 045.07	3 521 848.08			
L218	-86 194.74	3 519 605.42		R217	-84 055.35	3 521 833.45			
L219	-86 447.08	3 519 349.65		R218	-84 085.90	3 521 790.97			
L220	-86 458.56	3 519 337.14		R219	-84 140.13	3 521 722.41			
L221	-86 704.41	3 519 087.23		R220	-84 201.49	3 521 655.79			
L222	-87 324.68	3 518 459.04		R221	-84 300.12	3 521 556.36			
L223	-87 490.55	3 518 284.66		R222	-84 887.91	3 520 964.17			
L224	-87 930.31	3 517 850.82		R223	-85 250.09	3 520 599.09			
L225	-87 994.36	3 517 771.42		R224	-85 279.54	3 520 569.48			
L226	-88 128.79	3 517 571.47		R225	-85 490.65	3 520 356.37			
L227	-88 132.70	3 517 564.65		R226	-85 818.43	3 520 024.83			
L228	-88 139.00	3 517 553.66		R227	-86 170.96	3 519 668.94			
L229	-88 242.13	3 517 337.22		R228	-86 218.23	3 519 628.60			
L230	-88 372.96	3 516 994.09		R229	-86 470.57	3 519 372.83			
L231	-88 434.96	3 516 654.07		R230	-86 727.89	3 519 110.42			
L232	-88 526.97	3 516 470.17		R231	-87 348.16	3 518 482.23			
L233	-88 524.17	3 516 464.73		R232	-87 514.10	3 518 307.78			
L234	-88 560.72	3 516 402.39		R233	-87 954.82	3 517 873.00			
L235	-88 629.05	3 516 310.72		R234	-88 020.95	3 517 791.02			
L236	-88 899.86	3 515 950.97		R235	-88 171.13	3 517 567.38			
L237	-89 305.70	3 515 410.26		R236	-88 172.17	3 517 565.25			
L238	-89 365.84	3 515 326.12		R237	-88 186.62	3 517 535.78			
L239	-89 411.99	3 515 238.42		R238	-88 241.07	3 517 423.71			
L240	-89 479.28	3 515 105.31		R239	-88 272.96	3 517 348.98			
L241	-89 637.99	3 514 773.25		R240	-88 403.79	3 517 005.85			
L242	-89 920.03	3 514 166.96		R241	-88 467.42	3 516 659.99			
L243	-89 937.56	3 514 099.71		R242	-88 573.10	3 516 455.86			
L244	-89 967.97	3 513 936.57		R243	-88 670.61	3 516 302.69			
L245	-89 969.36	3 513 721.45		R244	-88 946.00	3 515 940.70			
L246	-89 969.52	3 513 696.44		R245	-89 067.08	3 515 782.82			
L247	-89 969.70	3 513 669.08		R246	-89 177.50	3 515 639.48			
L248	-89 969.74	3 513 663.09		R247	-89 308.42	3 515 468.22			
L249	-89 965.92	3 513 639.18		R248	-89 393.05	3 515 343.32			
L250	-89 965.27	3 513 401.86		R249	-89 441.32	3 515 253.55			
L251	-89 954.33	3 513 306.56		R250	-89 508.73	3 515 120.20			
L252	-89 924.38	3 513 176.92		R251	-89 666.75	3 514 787.40			
L253	-89 882.25	3 513 023.03		R252	-89 950.08	3 514 178.35			
L254	-89 872.45	3 512 975.83		R253	-89 962.56	3 514 141.46			
					Vel	20	Van	27	P786/10
					Sheet		of		

PADRESERWE KOÖRDINATE				/	ROAD RESERVE CO-ORDINATES			
LINKERKANT/LEFT HAND SIDE					REGTERKANT/RIGHT HAND SIDE			
	Y	X	WG	27°	Y	X		
L255	-89 868.33	3 512	905.89	R254	-89 991.14	3 514	037.61	
L256	-89 878.85	3 512	814.45	R255	-90 000.97	3 513	936.78	
L257	-89 894.32	3 512	763.43	R256	-90 004.25	3 513	703.23	
L258	-89 943.56	3 512	679.14	R257	-90 004.50	3 513	693.45	
L259	-89 971.08	3 512	632.02	R258	-90 005.06	3 513	671.98	
L260	-89 980.23	3 512	616.36	R259	-90 005.66	3 513	648.85	
L261	-90 159.57	3 512	309.36	R260	-90 005.91	3 513	639.08	
L262	-90 204.47	3 512	235.24	R261	-90 005.27	3 513	401.75	
L263	-90 357.84	3 511	983.45	R262	-89 993.94	3 513	300.91	
L264	-90 436.59	3 511	854.17	R263	-89 963.35	3 513	167.91	
L265	-90 574.70	3 511	626.76	R264	-89 913.23	3 513	015.13	
L266	-90 598.71	3 511	587.22	R265	-89 904.38	3 512	973.84	
L267	-90 688.90	3 511	439.56	R266	-89 900.28	3 512	908.07	
L268	-90 723.51	3 511	382.72	R267	-89 909.94	3 512	822.13	
L269	-90 794.03	3 511	262.93	R268	-89 922.94	3 512	777.89	
L270	-90 819.14	3 511	211.27	R269	-89 970.24	3 512	696.91	
L271	-90 820.71	3 511	208.04	R270	-89 997.79	3 512	649.75	
L272	-90 850.54	3 511	131.31	R271	-90 007.78	3 512	632.65	
L273	-90 868.23	3 511	072.52	R272	-90 187.07	3 512	325.72	
L274	-90 886.88	3 510	987.30	R273	-90 231.82	3 512	251.85	
L275	-90 907.38	3 510	886.59	R274	-90 463.93	3 511	870.80	
L276	-90 909.13	3 510	877.97	R275	-90 626.01	3 511	603.91	
L277	-90 912.48	3 510	861.54	R276	-90 716.22	3 511	456.22	
L278	-90 916.49	3 510	841.87	R277	-90 751.09	3 511	398.94	
L279	-90 937.06	3 510	758.48	R278	-90 822.21	3 511	278.06	
L280	-90 957.26	3 510	696.82	R279	-90 850.54	3 511	219.61	
L281	-90 978.93	3 510	644.56	R280	-90 881.21	3 511	140.46	
L282	-91 008.45	3 510	583.67	R281	-90 881.62	3 511	139.07	
L283	-91 038.41	3 510	531.83	R282	-90 898.99	3 511	080.70	
L284	-91 324.82	3 510	112.30	R283	-90 918.18	3 510	993.95	
L285	-91 636.48	3 509	657.54	R284	-90 939.42	3 510	889.61	
L286	-91 882.20	3 509	300.18	R285	-90 942.26	3 510	875.66	
L287	-91 939.36	3 509	227.76	R286	-90 944.23	3 510	865.99	
L288	-92 010.90	3 509	151.12	R287	-90 947.84	3 510	848.25	
L289	-92 094.96	3 509	076.38	R288	-90 967.79	3 510	767.31	
L290	-92 187.38	3 509	007.88	R289	-90 987.24	3 510	707.94	
L291	-92 265.58	3 508	959.68	R290	-91 007.72	3 510	658.52	
L292	-92 325.23	3 508	927.47	R291	-91 036.69	3 510	598.66	
L293	-92 422.55	3 508	884.37	R292	-91 065.47	3 510	548.87	
L294	-92 510.50	3 508	852.74	R293	-91 351.23	3 510	130.37	
L295	-92 691.96	3 508	808.22	R294	-91 662.86	3 509	675.66	
L296	-92 731.71	3 508	795.23	R295	-91 907.94	3 509	319.17	
L297	-92 800.46	3 508	766.22	R296	-91 963.60	3 509	248.60	
L298	-92 850.10	3 508	738.28	R297	-92 034.28	3 509	172.97	
L299	-92 906.03	3 508	698.32	R298	-92 115.13	3 509	101.18	
L300	-92 958.43	3 508	651.29	R299	-92 205.31	3 509	034.35	
L301	-93 230.66	3 508	368.72	R300	-92 281.60	3 508	987.37	
L302	-93 318.06	3 508	276.68	R301	-92 339.33	3 508	956.17	
L303	-93 339.91	3 508	248.37	R302	-92 434.36	3 508	914.09	
L304	-93 371.36	3 508	178.74	R303	-92 520.35	3 508	883.76	
L305	-93 381.77	3 508	125.87	R304	-92 700.77	3 508	838.96	
				Vel	21	Van	27	P786/10
				Sheet		of		

PADRESERWE KOÖRDINATE				/	ROAD RESERVE CO-ORDINATES			
LINKERKANT/LEFT HAND SIDE					REGTERKANT/RIGHT HAND SIDE			
	Y	X	WG	27°	Y	X		
L306	-93 384.04	3 508	076.60	R305	-92 743.53	3 508	824.98	
L307	-93 378.15	3 507	999.23	R306	-92 815.36	3 508	794.55	
L308	-93 375.53	3 507	957.57	R307	-92 867.99	3 508	764.82	
L309	-93 378.20	3 507	890.53	R308	-92 926.75	3 508	722.73	
L310	-93 390.50	3 507	844.25	R309	-92 981.07	3 508	673.91	
L311	-93 401.83	3 507	814.74	R310	-93 265.73	3 508	378.35	
L312	-93 411.54	3 507	792.89	R311	-93 342.03	3 508	297.17	
L313	-93 433.99	3 507	756.70	R312	-93 366.67	3 508	265.25	
L314	-93 461.63	3 507	723.79	R313	-93 401.64	3 508	188.06	
L315	-93 527.67	3 507	656.70	R314	-93 413.12	3 508	129.66	
L316	-93 585.93	3 507	594.32	R315	-93 415.61	3 508	076.15	
L317	-93 811.06	3 507	360.62	R316	-93 409.58	3 507	997.03	
L318	-93 826.29	3 507	334.49	R317	-93 407.07	3 507	957.20	
L319	-93 836.27	3 507	305.23	R318	-93 409.54	3 507	895.26	
L320	-93 841.39	3 507	276.62	R319	-93 422.96	3 507	844.76	
L321	-93 841.69	3 507	228.67	R320	-93 439.45	3 507	807.66	
L322	-93 833.21	3 507	188.92	R321	-93 459.56	3 507	775.22	
L323	-93 818.11	3 507	156.86	R322	-93 484.95	3 507	745.00	
L324	-93 796.91	3 507	125.69	R323	-93 550.41	3 507	678.51	
L325	-93 770.13	3 507	099.90	R324	-93 608.78	3 507	616.01	
L326	-93 740.49	3 507	080.25	R325	-93 836.02	3 507	380.35	
L327	-93 710.56	3 507	061.04	R326	-93 855.08	3 507	347.64	
L328	-93 684.42	3 507	039.62	R327	-93 866.86	3 507	313.14	
L329	-93 655.50	3 507	008.72	R328	-93 872.87	3 507	279.51	
L330	-93 641.08	3 506	984.42	R329	-93 873.21	3 507	225.44	
L331	-93 628.25	3 506	957.65	R330	-93 863.26	3 507	178.78	
L332	-93 618.43	3 506	928.82	R331	-93 845.55	3 507	141.20	
L333	-93 614.84	3 506	908.90	R332	-93 821.12	3 507	105.27	
L334	-93 610.30	3 506	867.29	R333	-93 789.92	3 507	075.23	
L335	-93 612.81	3 506	840.85	R334	-93 757.70	3 507	053.86	
L336	-93 618.74	3 506	811.19	R335	-93 729.12	3 507	035.52	
L337	-93 629.95	3 506	778.55	R336	-93 705.99	3 507	016.57	
L338	-93 654.12	3 506	737.80	R337	-93 680.84	3 506	989.69	
L339	-93 670.91	3 506	716.60	R338	-93 668.88	3 506	969.55	
L340	-93 701.50	3 506	687.69	R339	-93 657.46	3 506	945.73	
L341	-93 719.15	3 506	671.02	R340	-93 647.27	3 506	915.80	
L342	-93 756.91	3 506	633.78	R341	-93 641.96	3 506	867.07	
L343	-93 760.47	3 506	630.28	R342	-93 644.01	3 506	845.44	
L344	-93 918.49	3 506	491.61	R343	-93 649.21	3 506	819.44	
L345	-93 927.62	3 506	497.76	R344	-93 658.71	3 506	791.80	
L346	-93 932.46	3 506	493.70	R345	-93 680.13	3 506	755.70	
L347	-93 963.93	3 506	470.38	R346	-93 694.20	3 506	737.93	
L348	-93 988.19	3 506	456.14	R347	-93 728.29	3 506	705.73	
L349	-94 038.91	3 506	428.43	R348	-93 741.02	3 506	693.69	
L350	-94 094.11	3 506	401.08	R349	-93 781.94	3 506	653.36	
L351	-94 156.92	3 506	367.21	R350	-93 783.74	3 506	651.79	
L352	-94 220.20	3 506	337.43	R351	-93 945.51	3 506	509.80	
L353	-94 259.10	3 506	319.33	R352	-93 935.61	3 506	503.14	
L354	-94 274.03	3 506	314.97	R353	-93 954.23	3 506	488.42	
L355	-94 300.46	3 506	311.42	R354	-93 973.63	3 506	475.06	
L356	-94 324.96	3 506	312.02	R355	-93 992.18	3 506	464.41	
				Vel	22	Van	27	P786/10
				Sheet		of		

PADRESERWE KOÖRDINATE				/	ROAD RESERVE CO-ORDINATES			
LINKERKANT/LEFT HAND SIDE					REGTERKANT/RIGHT HAND SIDE			
	Y	X	WG	27°	Y	X		
L357	-94 357.10	3 506	318.21	R356	-94 024.61	3 506	450.58	
L358	-94 492.36	3 506	357.26	R357	-94 084.27	3 506	421.26	
L359	-94 525.88	3 506	362.24	R358	-94 119.20	3 506	398.21	
L360	-94 728.71	3 506	421.29	R359	-94 197.93	3 506	357.19	
L361	-94 743.20	3 506	422.49	R360	-94 219.41	3 506	346.29	
L362	-94 882.53	3 506	423.57	R361	-94 244.62	3 506	335.75	
L363	-94 891.91	3 506	419.00	R362	-94 263.34	3 506	330.83	
L364	-95 006.93	3 506	281.68	R363	-94 296.49	3 506	327.79	
L365	-95 121.71	3 506	233.41	R364	-94 517.86	3 506	390.27	
L366	-95 133.44	3 506	229.32	R365	-94 596.37	3 506	413.56	
L367	-95 237.38	3 506	186.11	R366	-94 784.21	3 506	468.74	
L368	-95 253.58	3 506	183.46	R367	-94 897.23	3 506	440.45	
L369	-95 255.13	3 506	190.11	R368	-94 917.37	3 506	440.64	
L370	-95 285.00	3 506	186.84	R369	-94 917.59	3 506	417.23	
L371	-95 302.72	3 506	186.27	R370	-95 017.66	3 506	298.97	
L372	-95 338.17	3 506	188.39	R371	-95 129.16	3 506	252.00	
L373	-95 359.09	3 506	191.37	R372	-95 143.41	3 506	239.92	
L374	-95 374.26	3 506	194.55	R373	-95 216.41	3 506	211.12	
L375	-95 390.97	3 506	198.65	R374	-95 263.94	3 506	198.92	
L376	-95 405.93	3 506	203.23	R375	-95 289.00	3 506	195.99	
L377	-95 422.37	3 506	209.73	R376	-95 311.21	3 506	195.48	
L378	-95 453.74	3 506	223.88	R377	-95 342.10	3 506	197.89	
L379	-95 553.32	3 506	274.12	R378	-95 369.24	3 506	202.10	
L380	-95 568.89	3 506	283.33	R379	-95 400.90	3 506	210.57	
L381	-95 591.17	3 506	291.83	R380	-95 425.85	3 506	220.18	
L382	-95 619.57	3 506	299.07	R381	-95 458.10	3 506	235.39	
L383	-95 635.60	3 506	301.43	R382	-95 548.56	3 506	280.96	
L384	-95 658.38	3 506	303.28	R383	-95 562.74	3 506	287.94	
L385	-95 716.89	3 506	303.20	R384	-95 584.85	3 506	296.72	
L386	-95 738.78	3 506	304.39	R385	-95 608.63	3 506	303.37	
L387	-95 757.84	3 506	306.80	R386	-95 633.71	3 506	307.84	
L388	-95 785.00	3 506	313.11	R387	-95 653.52	3 506	309.62	
L389	-95 810.16	3 506	321.21	R388	-95 675.09	3 506	310.02	
L390	-95 829.57	3 506	330.44	R389	-95 715.09	3 506	309.97	
L391	-95 867.05	3 506	350.53	R390	-95 751.53	3 506	312.64	
L392	-95 937.34	3 506	408.54	R391	-95 771.61	3 506	316.86	
L393	-95 958.34	3 506	423.07	R392	-95 789.92	3 506	322.02	
L394	-95 974.38	3 506	432.55	R393	-95 821.15	3 506	334.34	
L395	-95 997.53	3 506	444.94	R394	-95 847.43	3 506	349.67	
L396	-96 060.05	3 506	468.86	R395	-95 868.60	3 506	364.36	
L397	-96 093.46	3 506	483.29	R396	-95 922.27	3 506	408.11	
L398	-96 108.98	3 506	490.40	R397	-95 946.92	3 506	426.55	
L399	-96 128.82	3 506	501.62	R398	-95 968.12	3 506	439.44	
L400	-96 152.96	3 506	517.91	R399	-95 982.20	3 506	447.08	
L401	-96 231.64	3 506	584.76	R400	-95 997.92	3 506	454.25	
L402	-96 254.04	3 506	600.38	R401	-96 020.70	3 506	463.44	
L403	-96 277.42	3 506	613.78	R402	-96 082.16	3 506	487.22	
L404	-96 298.11	3 506	623.24	R403	-96 098.31	3 506	494.87	
L405	-96 322.01	3 506	631.76	R404	-96 125.08	3 506	509.39	
L406	-96 355.42	3 506	640.55	R405	-96 150.77	3 506	527.35	
L407	-96 374.61	3 506	643.92	R406	-96 209.66	3 506	578.09	
				Vel	23	Van	27	P786/10
				Sheet		of		

PADRESERWE KOÖRDINATE				/	ROAD RESERVE CO-ORDINATES			
LINKERKANT/LEFT HAND SIDE					REGTERKANT/RIGHT HAND SIDE			
	Y	X	WG	27°	Y	X		
L408	-96 413.11	3 506	646.19	R407	-96 234.52	3 506	597.30	
L409	-96 454.44	3 506	642.82	R408	-96 265.69	3 506	618.72	
L410	-96 491.46	3 506	635.34	R409	-96 284.61	3 506	628.43	
L411	-96 524.85	3 506	624.36	R410	-96 309.33	3 506	638.76	
L412	-96 596.71	3 506	595.51	R411	-96 333.71	3 506	646.46	
L413	-96 637.92	3 506	584.36	R412	-96 360.92	3 506	652.11	
L414	-96 655.71	3 506	581.71	R413	-96 379.55	3 506	654.43	
L415	-96 702.67	3 506	582.78	R414	-96 400.07	3 506	655.97	
L416	-96 713.64	3 506	585.10	R415	-96 422.55	3 506	656.13	
	WG 29°			R416	-96 445.68	3 506	654.32	
L416	92 934.75	3 506	550.46	R417	-96 467.97	3 506	650.82	
L417	92 935.17	3 506	538.70	R418	-96 503.70	3 506	642.03	
L418	92 921.56	3 506	540.94	R419	-96 540.05	3 506	629.02	
L419	92 901.35	3 506	546.31	R420	-96 595.76	3 506	606.84	
L420	92 879.95	3 506	554.29	R421	-96 628.37	3 506	596.82	
L421	92 859.79	3 506	564.01	R422	-96 664.78	3 506	591.83	
L422	92 840.65	3 506	575.82	R423	-96 697.01	3 506	592.97	
L423	92 825.13	3 506	587.29	R424	-96 711.99	3 506	596.29	
L424	92 801.62	3 506	608.91	R425	-96 713.84	3 506	596.77	
L425	92 785.21	3 506	628.89		WG 29°			
L426	92 773.24	3 506	647.80	R425	92 934.34	3 506	562.13	
L427	92 762.02	3 506	669.38	R426	92 933.94	3 506	573.31	
L428	92 751.33	3 506	696.40	R427	92 928.57	3 506	574.18	
L429	92 742.97	3 506	727.94	R428	92 911.55	3 506	578.72	
L430	92 729.68	3 506	784.12	R429	92 893.16	3 506	585.55	
L431	92 710.67	3 506	865.96	R430	92 876.01	3 506	593.84	
L432	92 701.58	3 506	903.40	R431	92 859.55	3 506	604.01	
L433	92 694.46	3 506	928.82	R432	92 846.65	3 506	613.56	
L434	92 684.59	3 506	953.99	R433	92 827.79	3 506	630.67	
L435	92 673.57	3 506	975.35	R434	92 812.61	3 506	648.88	
L436	92 662.56	3 506	991.48	R435	92 802.63	3 506	664.81	
L437	92 645.02	3 507	012.66	R436	92 792.85	3 506	683.62	
L438	92 625.50	3 507	030.70	R437	92 783.57	3 506	707.04	
L439	92 604.84	3 507	046.20	R438	92 775.97	3 506	736.24	
L440	92 589.88	3 507	055.25	R439	92 762.76	3 506	791.97	
L441	92 571.89	3 507	064.10	R440	92 743.73	3 506	873.96	
L442	92 553.99	3 507	071.09	R441	92 734.47	3 506	911.95	
L443	92 502.61	3 507	086.79	R442	92 726.68	3 506	939.57	
L444	92 413.72	3 507	112.19	R443	92 715.57	3 506	967.89	
L445	92 386.13	3 507	119.15	R444	92 702.82	3 506	992.58	
L446	92 358.75	3 507	123.27	R445	92 689.79	3 507	011.80	
L447	92 331.33	3 507	124.64	R446	92 669.79	3 507	035.84	
L448	92 305.11	3 507	123.24	R447	92 647.36	3 507	056.64	
L449	92 131.70	3 507	101.65	R448	92 623.98	3 507	074.24	
L450	92 098.06	3 507	094.58	R449	92 606.33	3 507	085.01	
L451	92 078.34	3 507	088.36	R450	92 585.69	3 507	095.14	
L452	92 053.71	3 507	078.36	R451	92 565.40	3 507	103.09	
L453	92 023.11	3 507	061.26	R452	92 511.89	3 507	119.46	
L454	92 001.27	3 507	046.63	R453	92 422.02	3 507	145.17	
L455	91 976.50	3 507	027.11	R454	92 392.80	3 507	152.40	
				Vel	24	Van	27	P786/10
				Sheet		of		

PADRESERWE KOÖRDINATE				/	ROAD RESERVE CO-ORDINATES			
LINKERKANT/LEFT HAND SIDE					REGTERKANT/RIGHT HAND SIDE			
	Y	X	WG	29°	Y	X		
L456	91 918.14	3 506 976.66		R455	92 360.43	3 507 157.25		
L457	91 870.46	3 506 942.55		R456	92 331.33	3 507 158.57		
L458	91 833.86	3 506 920.95		R457	92 303.43	3 507 157.20		
L459	91 803.94	3 506 906.38		R458	92 125.91	3 507 135.12		
L460	91 769.95	3 506 893.45		R459	92 089.53	3 507 127.44		
L461	91 731.50	3 506 881.60		R460	92 066.94	3 507 120.38		
L462	91 703.32	3 506 874.94		R461	92 039.58	3 507 109.27		
L463	91 663.06	3 506 868.42		R462	92 005.17	3 507 090.13		
L464	91 609.93	3 506 863.79		R463	91 981.39	3 507 074.14		
L465	91 541.95	3 506 864.01		R464	91 954.24	3 507 052.82		
L466	91 442.86	3 506 864.19		R465	91 895.93	3 507 002.39		
L467	91 316.84	3 506 861.42		R466	91 851.91	3 506 971.00		
L468	91 231.15	3 506 856.62		R467	91 818.97	3 506 951.48		
L469	91 129.57	3 506 847.63		R468	91 790.39	3 506 937.57		
L470	91 028.35	3 506 835.02		R469	91 758.92	3 506 925.51		
L471	90 750.77	3 506 796.72		R470	91 723.60	3 506 914.66		
L472	90 446.22	3 506 754.73		R471	91 696.67	3 506 908.26		
L473	90 209.85	3 506 721.80		R472	91 658.81	3 506 902.12		
L474	90 181.83	3 506 718.59		R473	91 608.25	3 506 897.68		
L475	90 068.08	3 506 702.11		R474	91 542.48	3 506 897.99		
L476	89 909.38	3 506 675.01		R475	91 442.39	3 506 898.18		
L477	89 776.03	3 506 653.43		R476	91 315.80	3 506 895.41		
L478	89 642.11	3 506 630.25		R477	91 228.35	3 506 890.51		
L479	89 528.46	3 506 610.36		R478	91 125.36	3 506 881.36		
L480	89 385.17	3 506 585.72		R479	91 023.70	3 506 868.70		
L481	89 096.54	3 506 536.44		R480	90 746.08	3 506 830.38		
L482	88 707.04	3 506 468.46		R481	90 441.53	3 506 788.38		
L483	88 383.07	3 506 412.36		R482	90 205.39	3 506 755.51		
L484	88 189.48	3 506 378.60		R483	90 050.83	3 506 734.63		
L485	87 918.80	3 506 332.74		R484	90 014.40	3 506 728.64		
L486	87 848.64	3 506 320.67		R485	89 889.00	3 506 706.99		
L487	87 841.48	3 506 319.44		R486	89 800.88	3 506 691.80		
L488	87 834.97	3 506 318.35		R487	89 650.68	3 506 665.67		
L489	87 806.64	3 506 313.45		R488	89 521.73	3 506 643.05		
L490	87 789.04	3 506 310.39		R489	89 384.65	3 506 619.48		
L491	87 365.66	3 506 236.67		R490	89 226.76	3 506 592.38		
L492	87 026.40	3 506 179.50		R491	89 095.79	3 506 569.70		
L493	86 856.70	3 506 148.38		R492	89 031.04	3 506 558.30		
L494	86 667.72	3 506 115.82		R493	88 882.64	3 506 532.50		
L495	86 659.33	3 506 114.42		R494	88 731.37	3 506 506.35		
L496	86 420.80	3 506 073.31		R495	88 719.08	3 506 504.20		
L497	86 201.45	3 506 035.09		R496	88 585.16	3 506 481.30		
L498	86 189.16	3 506 035.22		R497	88 434.00	3 506 455.11		
L499	86 067.59	3 506 013.28		R498	88 277.40	3 506 428.03		
L500	86 057.84	3 506 011.65		R499	88 123.82	3 506 402.02		
L501	85 827.16	3 505 970.10		R500	87 982.99	3 506 377.79		
L502	85 657.70	3 505 939.58		R501	87 851.62	3 506 355.19		
L503	85 578.95	3 505 925.29		R502	87 844.00	3 506 353.68		
L504	85 278.64	3 505 832.29		R503	87 831.59	3 506 351.22		
L505	85 054.55	3 505 763.58		R504	87 807.83	3 506 346.48		
L506	85 050.60	3 505 762.97		R505	87 797.19	3 506 344.36		
				Vel	25	Van	27	P786/10
				Sheet		of		

PADRESERWE KOÖRDINATE				/	ROAD RESERVE CO-ORDINATES			
LINKERKANT/LEFT HAND SIDE					REGTERKANT/RIGHT HAND SIDE			
	Y	X	WG	29°	Y	X		
L507	84 830.43	3 505 757.52		R506	87 577.55	3 506 307.89		
L508	84 453.88	3 505 816.18		R507	87 367.06	3 506 270.77		
L509	84 429.38	3 505 820.00		R508	87 357.06	3 506 269.18		
L510	84 376.30	3 505 828.27		R509	87 264.46	3 506 252.78		
L511	84 326.38	3 505 836.04		R510	87 020.85	3 506 210.77		
L512	84 269.26	3 505 844.94		R511	86 864.56	3 506 183.49		
L513	84 098.16	3 505 871.95		R512	86 661.85	3 506 148.21		
L514	83 911.28	3 505 901.29		R513	86 653.79	3 506 146.85		
L515	83 786.30	3 505 920.69		R514	86 431.30	3 506 108.64		
L516	83 444.80	3 505 976.36		R515	86 423.33	3 506 105.53		
L517	83 266.86	3 506 001.32		R516	86 075.66	3 506 046.33		
L518	83 163.75	3 505 995.67		R517	85 867.06	3 506 010.33		
L519	83 040.39	3 505 951.71		R518	85 575.17	3 505 958.99		
L520	82 896.66	3 505 849.77		R519	85 115.63	3 505 817.45		
L521	82 888.81	3 505 845.18		R520	84 998.48	3 505 796.90		
L522	82 877.30	3 505 838.56		R521	84 806.28	3 505 794.79		
L523	82 866.29	3 505 832.04		R522	84 477.06	3 505 846.04		
L524	82 861.50	3 505 829.28		R523	84 438.63	3 505 852.09		
L525	82 853.09	3 505 818.85		R524	84 387.33	3 505 860.18		
L526	82 838.59	3 505 808.11		R525	84 334.89	3 505 868.42		
L527	82 662.79	3 505 682.16		R526	84 313.39	3 505 871.80		
L528	82 598.28	3 505 632.61		R527	84 140.90	3 505 899.04		
L529	82 350.20	3 505 444.98		R528	84 125.19	3 505 901.54		
L530	82 107.22	3 505 337.39		R529	83 852.37	3 505 944.83		
L531	81 666.62	3 505 140.90		R530	83 774.84	3 505 957.03		
L532	81 278.10	3 504 969.16		R531	83 449.38	3 506 009.04		
L533	81 213.30	3 504 948.66		R532	83 266.65	3 506 036.87		
L534	81 132.18	3 504 933.66		R533	83 171.28	3 506 029.22		
L535	81 063.85	3 504 929.61		R534	83 152.67	3 506 026.76		
L536	81 035.72	3 504 929.08		R535	83 025.01	3 505 981.27		
L537	80 805.33	3 504 944.60		R536	82 892.39	3 505 891.63		
L538	80 663.06	3 504 955.03		R537	82 870.12	3 505 876.59		
L539	80 566.30	3 504 961.87		R538	82 853.21	3 505 865.17		
L540	80 517.82	3 504 965.30		R539	82 833.44	3 505 851.81		
L541	80 227.60	3 504 987.84		R540	82 516.62	3 505 618.47		
L542	80 095.33	3 504 996.05		R541	82 350.09	3 505 494.86		
L543	79 884.01	3 505 009.17		R542	82 335.24	3 505 489.44		
L544	79 701.83	3 505 019.26		R543	82 177.76	3 505 453.66		
L545	79 554.63	3 505 027.44		R544	82 106.81	3 505 380.10		
L546	79 386.92	3 505 024.42		R545	81 644.63	3 505 171.23		
L547	79 060.43	3 505 005.50		R546	81 499.43	3 505 105.75		
L548	78 749.38	3 504 987.39		R547	81 268.45	3 504 999.68		
L549	78 196.69	3 504 955.19		R548	81 203.66	3 504 979.21		
L550	77 636.89	3 504 922.24		R549	81 128.56	3 504 965.42		
L551	77 487.06	3 504 909.80		R550	81 033.26	3 504 961.80		
L552	77 127.00	3 504 893.25		R551	80 807.59	3 504 976.54		
L553	76 553.49	3 504 859.08		R552	80 666.80	3 504 988.04		
L554	76 068.10	3 504 830.69		R553	80 520.07	3 504 998.22		
L555	76 053.33	3 504 829.76		R554	80 229.65	3 505 020.77		
L556	76 014.36	3 504 827.49		R555	80 065.47	3 505 029.60		
L557	76 004.41	3 504 826.93		R556	80 000.47	3 505 034.00		
				Vel	26	Van	27	P786/10
				Sheet		of		

PADRESERWE KOÖRDINATE				/	ROAD RESERVE CO-ORDINATES		
LINKERKANT/LEFT HAND SIDE					REGTERKANT/RIGHT HAND SIDE		
	Y	X	WG	29°	Y	X	
L558	75 423.97	3 504	792.79	R557	79 961.07	3 505	036.67
L559	74 734.05	3 504	752.53	R558	79 912.16	3 505	040.00
L560	74 193.78	3 504	720.87	R559	79 847.65	3 505	044.58
L561	73 548.88	3 504	683.22	R560	79 705.70	3 505	054.63
L562	73 424.56	3 504	676.05	R561	79 648.73	3 505	058.68
L563	73 353.66	3 504	672.08	R562	79 563.19	3 505	059.17
L564	73 324.88	3 504	670.31	R563	79 496.68	3 505	059.62
L565	73 031.42	3 504	653.13	R564	79 433.16	3 505	059.91
L566	72 945.14	3 504	648.59	R565	79 058.52	3 505	038.43
L567	71 617.04	3 504	571.38	R566	78 774.98	3 505	021.63
L568	70 836.87	3 504	524.40	R567	78 194.74	3 504	988.14
L569	70 210.16	3 504	487.92	R568	77 634.97	3 504	955.21
L570	69 652.53	3 504	476.27	R569	77 125.15	3 504	926.21
L571	69 114.04	3 504	490.79	R570	76 551.58	3 504	892.06
L572	68 995.09	3 504	494.21	R571	76 049.72	3 504	862.59
L573	68 679.31	3 504	503.33	R572	76 039.56	3 504	861.98
L574	68 476.13	3 504	508.18	R573	76 016.88	3 504	860.69
L575	68 249.63	3 504	514.76	R574	76 002.46	3 504	859.86
L576	68 064.53	3 504	533.19	R575	75 422.04	3 504	825.73
L577	67 775.75	3 504	560.61	R576	74 732.12	3 504	785.50
L578	67 736.43	3 504	560.17	R577	74 191.82	3 504	753.82
L579	67 667.05	3 504	554.25	R578	73 707.01	3 504	725.79
L580	67 567.68	3 504	531.05	R579	73 546.95	3 504	716.14
L581	67 505.15	3 504	505.92	R580	73 029.50	3 504	686.05
L582	67 311.55	3 504	411.05	R581	72 388.53	3 504	648.79
L583	66 973.37	3 504	245.34	R582	71 610.96	3 504	604.30
L584	66 922.28	3 504	217.55	R583	70 834.92	3 504	557.35
L585	66 899.59	3 504	205.20	R584	70 208.23	3 504	520.88
L586	66 887.46	3 504	196.50	R585	69 653.40	3 504	509.27
L587	66 836.36	3 504	159.75	R586	69 114.94	3 504	523.79
L588	66 781.70	3 504	108.80	R587	68 968.25	3 504	528.00
L589	66 732.12	3 504	048.27	R588	68 680.11	3 504	536.32
L590	66 688.82	3 503	979.21	R589	68 477.01	3 504	541.13
L591	66 601.02	3 503	786.38	R590	68 252.89	3 504	547.61
L592	66 565.54	3 503	721.95	R591	68 067.64	3 504	566.03
L593	66 500.75	3 503	644.12	R592	67 778.89	3 504	593.47
L594	66 426.80	3 503	584.84	R593	67 733.66	3 504	593.02
L595	66 353.25	3 503	545.58	R594	67 664.26	3 504	587.15
L596	66 289.44	3 503	525.15	R595	67 555.38	3 504	561.67
L597	66 263.88	3 503	518.36	R596	67 492.87	3 504	536.57
L598	66 207.05	3 503	503.28	R597	67 298.32	3 504	440.35
L599	66 185.32	3 503	497.47	R598	66 962.60	3 504	275.28
L600	66 176.15	3 503	495.01	R599	66 880.90	3 504	233.61
				R600	66 815.36	3 504	186.47
				R601	66 757.72	3 504	132.92
R608	66 339.21	3 503	576.57	R602	66 704.85	3 504	068.60
R609	66 279.95	3 503	557.78	R603	66 659.31	3 503	996.17
R610	66 244.56	3 503	548.39	R604	66 570.03	3 503	800.38
R611	66 201.38	3 503	536.97	R605	66 536.27	3 503	739.23
R612	66 172.28	3 503	529.15	R606	66 475.85	3 503	667.29
R613	66 167.57	3 503	527.88	R607	66 406.83	3 503	612.36

Vel	27	Van	27	P786/10
Sheet		of		

Printed by and obtainable from the Government Printer, Bosman Street, Private Bag X85, Pretoria, 0001
Publications: Tel: (012) 334-4508, 334-4509, 334-4510
Advertisements: Tel: (012) 334-4673, 334-4674, 334-4504
Subscriptions: Tel: (012) 334-4735, 334-4736, 334-4737
Cape Town Branch: Tel: (021) 465-7531

Gedruk deur en verkrygbaar by die Staatsdrukker, Bosmanstraat, Privaatsak X85, Pretoria, 0001
Publikasies: Tel: (012) 334-4508, 334-4509, 334-4510
Advertensies: Tel: (012) 334-4673, 334-4674, 334-4504
Subskripsies: Tel: (012) 334-4735, 334-4736, 334-4737
Kaapstad-tak: Tel: (021) 465-7531