



# Government Gazette Staatskoerant

REPUBLIC OF SOUTH AFRICA  
REPUBLIEK VAN SUID-AFRIKA

Vol. 570

Pretoria, 13 December 2012  
Desember

No. 35974

*N.B. The Government Printing Works will not be held responsible for the quality of "Hard Copies" or "Electronic Files" submitted for publication purposes*



**AIDS HELPLINE: 0800-0123-22 Prevention is the cure**

**IMPORTANT NOTICE**

The Government Printing Works will not be held responsible for faxed documents not received due to errors on the fax machine or faxes received which are unclear or incomplete. Please be advised that an "OK" slip, received from a fax machine, will not be accepted as proof that documents were received by the GPW for printing. If documents are faxed to the GPW it will be the sender's responsibility to phone and confirm that the documents were received in good order.

Furthermore the Government Printing Works will also not be held responsible for cancellations and amendments which have not been done on original documents received from clients.

**CONTENTS****INHOUD**

<i>No.</i>	<i>Page No.</i>	<i>Gazette No.</i>	<i>No.</i>	<i>Bladsy No.</i>	<i>Koerant No.</i>
<b>GOVERNMENT NOTICE</b>			<b>GOEWERMENTSKENNISGEWING</b>		
<b>Transport, Department of</b>			<b>Vervoer, Departement van</b>		
<i>Government Notice</i>			<i>Goewermentskennisgewing</i>		
1044		South African National Roads Agency Limited and the National Roads Act (7/1998): Declaration amendment of National Road R61 Section 7 .....	3	35974	
			1044		Suid-Afrikaanse Nasionale Padagentskap Beperk en die Nasionale Paaie Wet (7/1998): Verklaring wysiging van Nasionale Pad R61 Seksie 7 .....
			4	35974	

---

## GOVERNMENT NOTICE

---

### DEPARTMENT OF TRANSPORT

No. 1044

13 December 2012

## THE SOUTH AFRICAN NATIONAL ROADS AGENCY LIMITED

Registration No: 98/09584/06

---

### DECLARATION AMENDMENT OF NATIONAL ROAD R61 SECTION 7

AMENDMENT OF DECLARATION NO. 302 OF 2009

By virtue of Section 40(1)(b) of the South African National Roads Agency Limited and the National Roads Act, 1998 (Act No. 7 of 1998), I hereby amend Declaration No. 302 of 2009, by substituting sheets 1 to 19 of Plan No. P671/08, with the subjoined sheets 1 to 15 of Plan No. P787/10.

**[National Road R61 Section 7: Langdon – Umtata (Mthatha)]**



---

MINISTER OF TRANSPORT

## GOEWERMENTSKENNISGEWING

---

---

### DEPARTEMENT VAN VERVOER

No. 1044

13 Desember 2012

## DIE SUID-AFRIKAANSE NASIONALE PADAGENTSKAP BEPERK

Registrasie No: 98/09584/06

---

### VERKLARING WYSIGING VAN NASIONALE PAD R61 SEKSIE 7

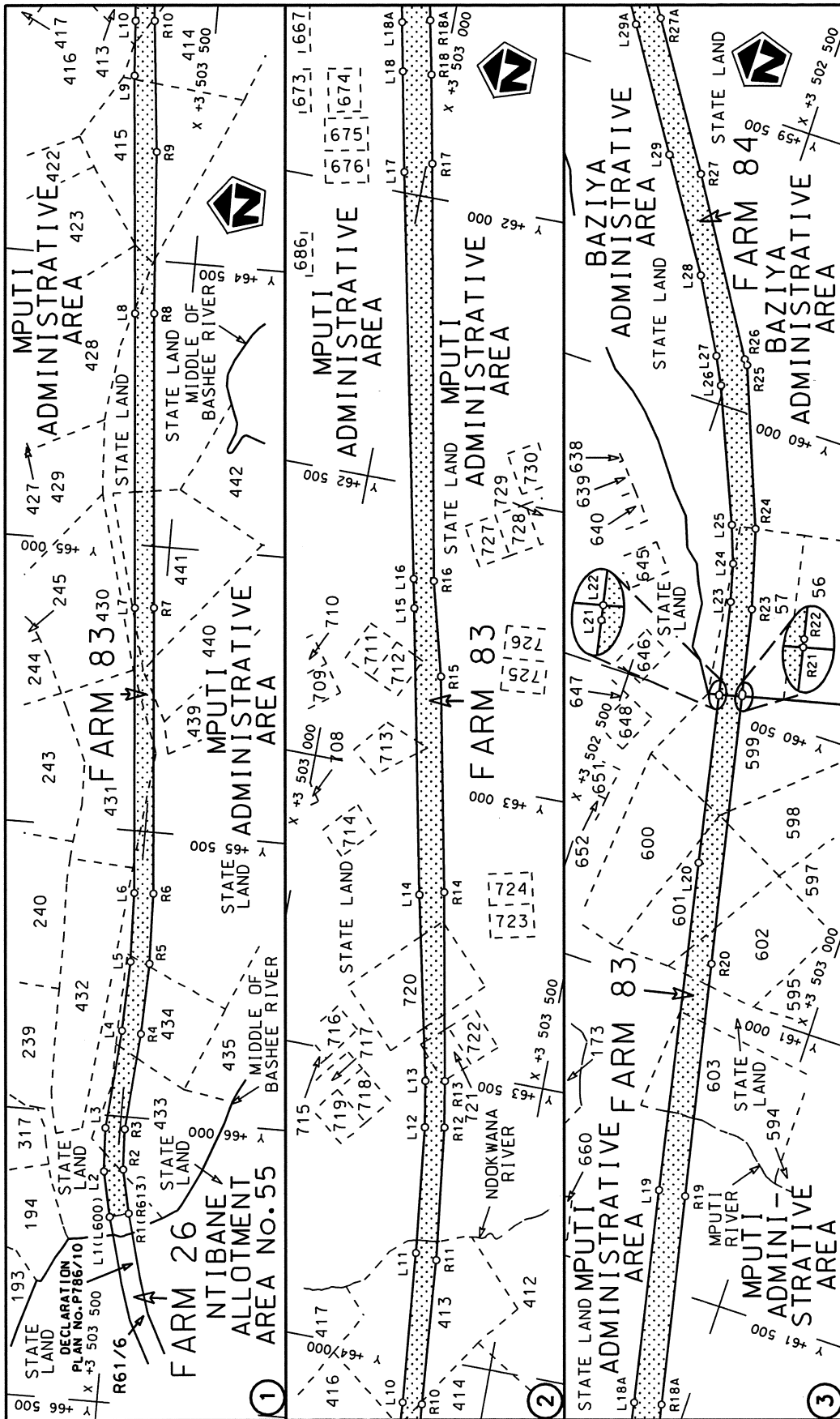
WYSIGING VAN VERKLARING NO. 302 VAN 2009

Kragtens Artikel 40(1)(b) van die Suid-Afrikaanse Nasionale Padagentskap Beperk en die Nasionale Paaie Wet, 1998 (Wet no.7 van 1998), wysig ek hiermee Verklaring no. 302 van 2009, deur velle 1 tot 19 van Plan no. P671/08, te vervang met meegaande velle 1 tot 15 van Plan no. P787/10.

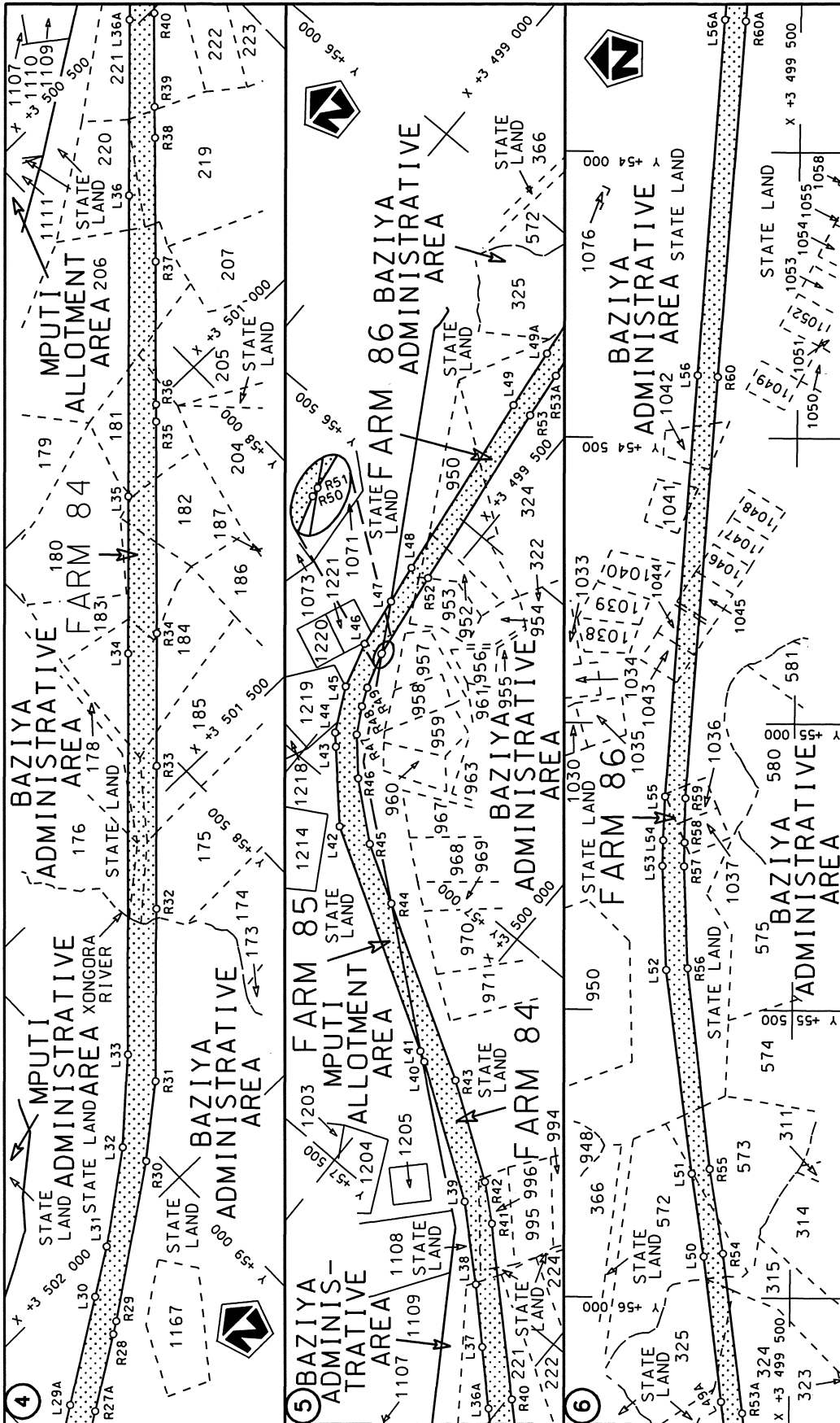
[Nasionale Pad R61 Seksie 7: Langdon – Umtata (Mthatha)]

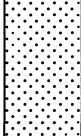


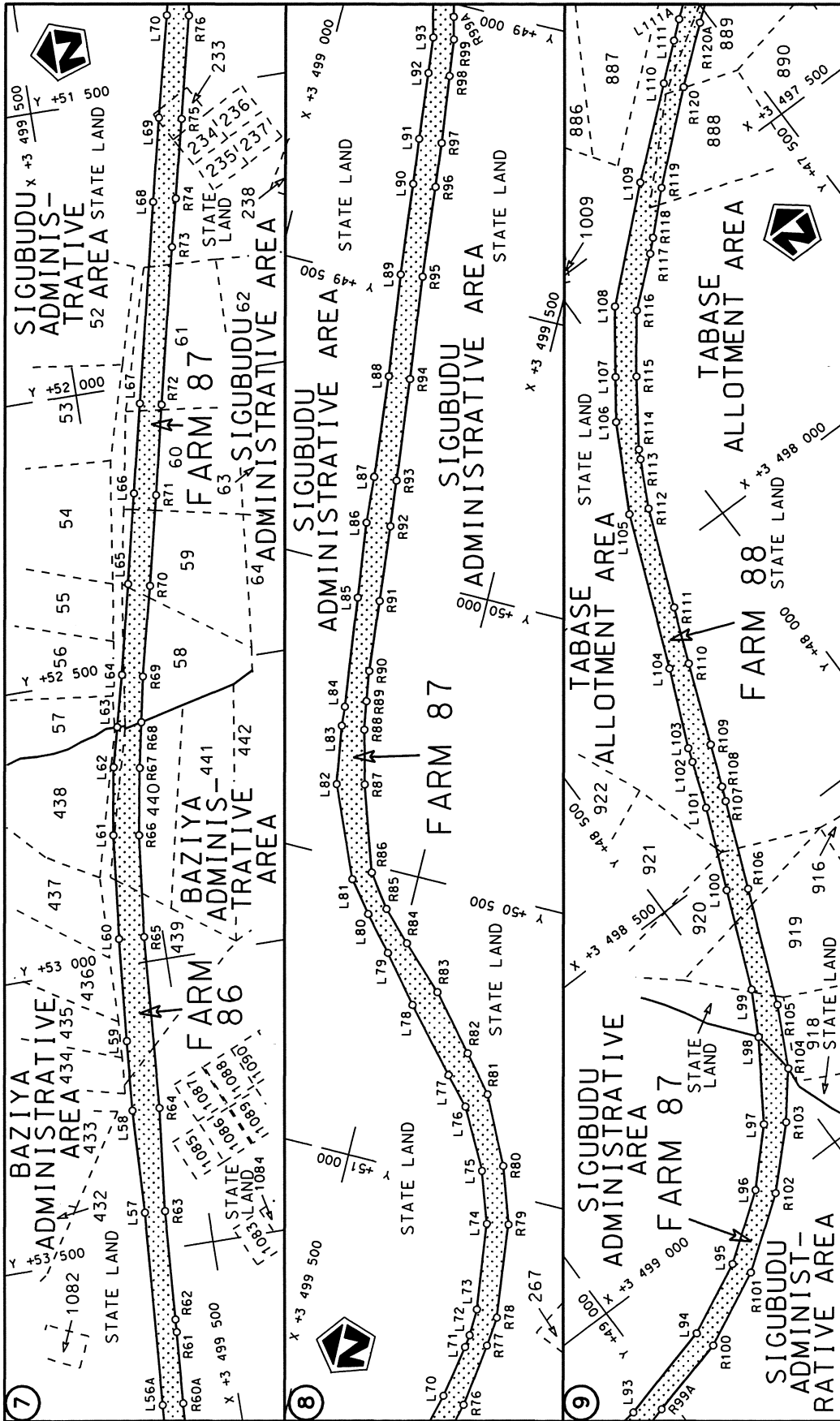
MINISTER VAN VERVOER

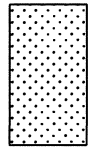


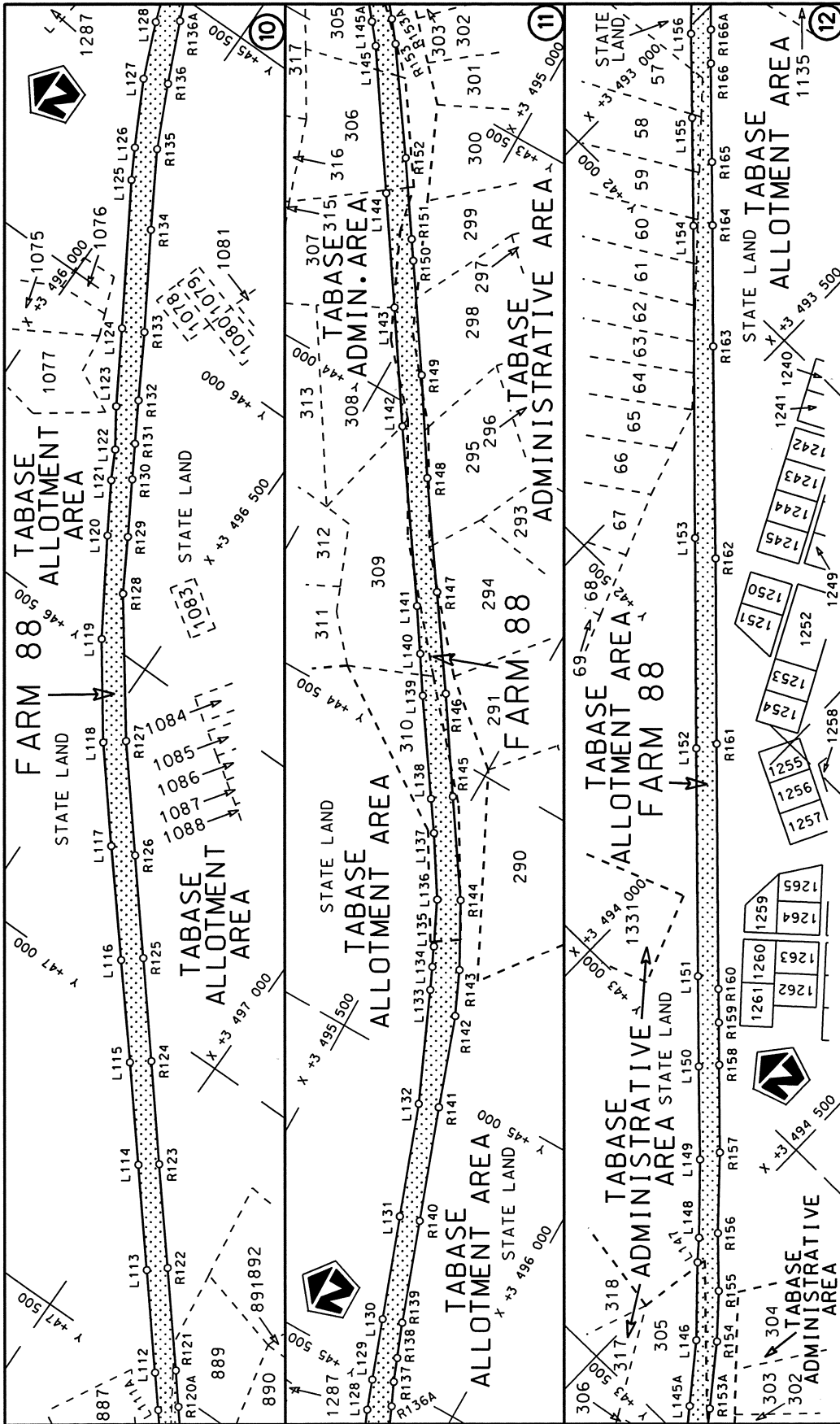
<p>Die Suid Afrikaanse Nasionale Padagentskap Beperk The South African National Roads Agency Limited</p>	<p>Die figuur getoon The figure shown</p>	<p>steldie padreserve voor van 'n gedeelte represents the road reserve of a portion van Nasionale Roete R61 Seksie 7 of National Route R61 Section 7</p>	<p>Vel Sheet 1 van of 15 Plan P787/10</p>
--	---	--	---

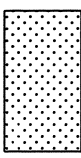


Die Suid Afrikaanse Nasionale Padogenskap Beperk The South African National Roads Agency Limited	Die figuur getoon The figure shown	 steldie padreserwe voor van 'n gedeelte represents the road reserve of a portion van Nasionale Roete R61 of National Route Section	Vel Sheet 2 of 15 Plan P787/10
---	---------------------------------------	---	--------------------------------------

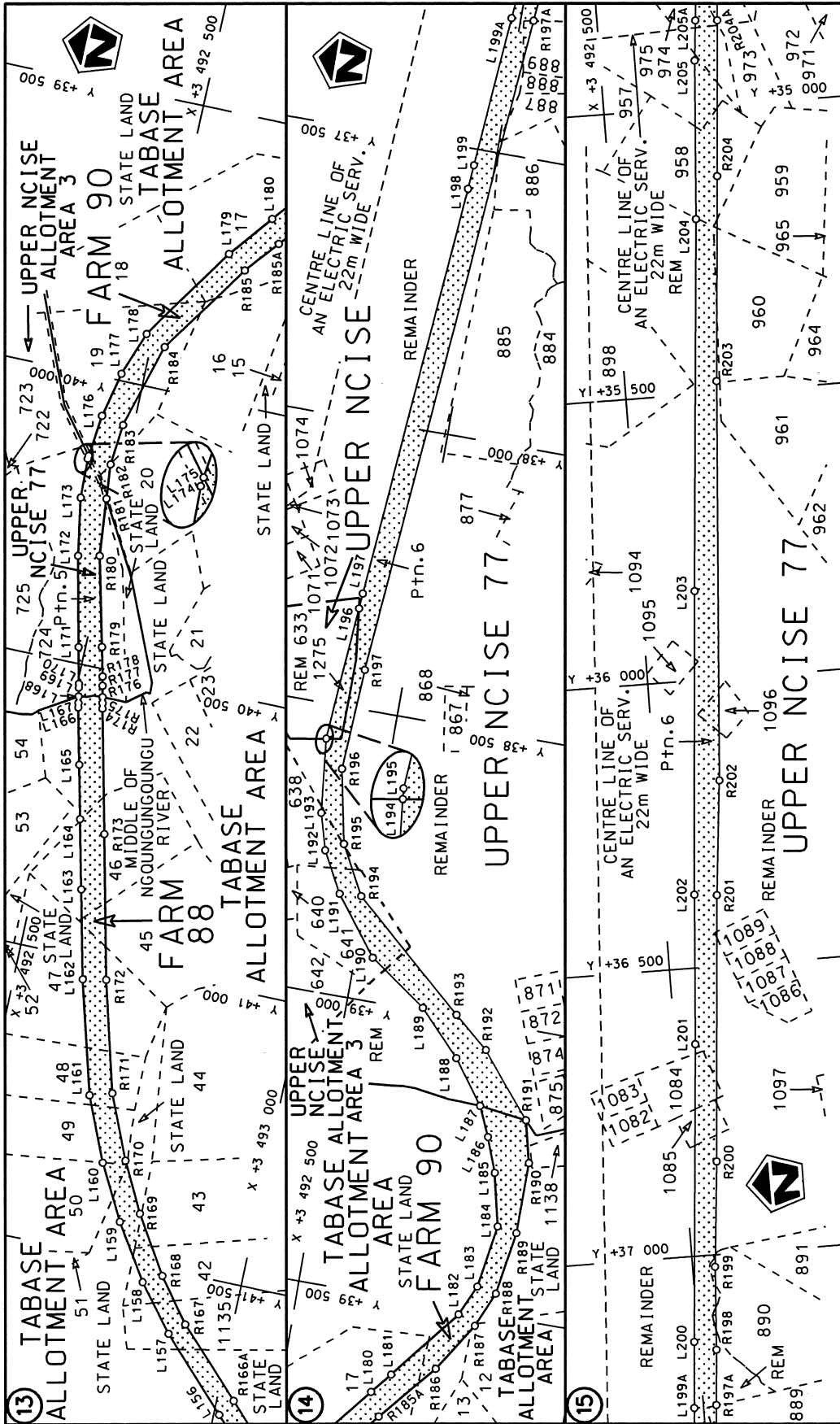


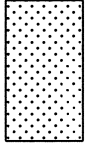
<p>Die Suid Afrikaanse Nasionale Podagentskap Beperk The South African National Roads Agency Limited</p>	<p>Die figuur getoon The figure shown</p>  <p>steldie padreserwe voor van 'n gedeelte represents the road reserve of a portion van Nasionale Roete R61 Seksie of National Route R61 Section</p>	<p>Vel Sheet 3 of 15</p> <p>Plan P787/10</p>
--	--	--

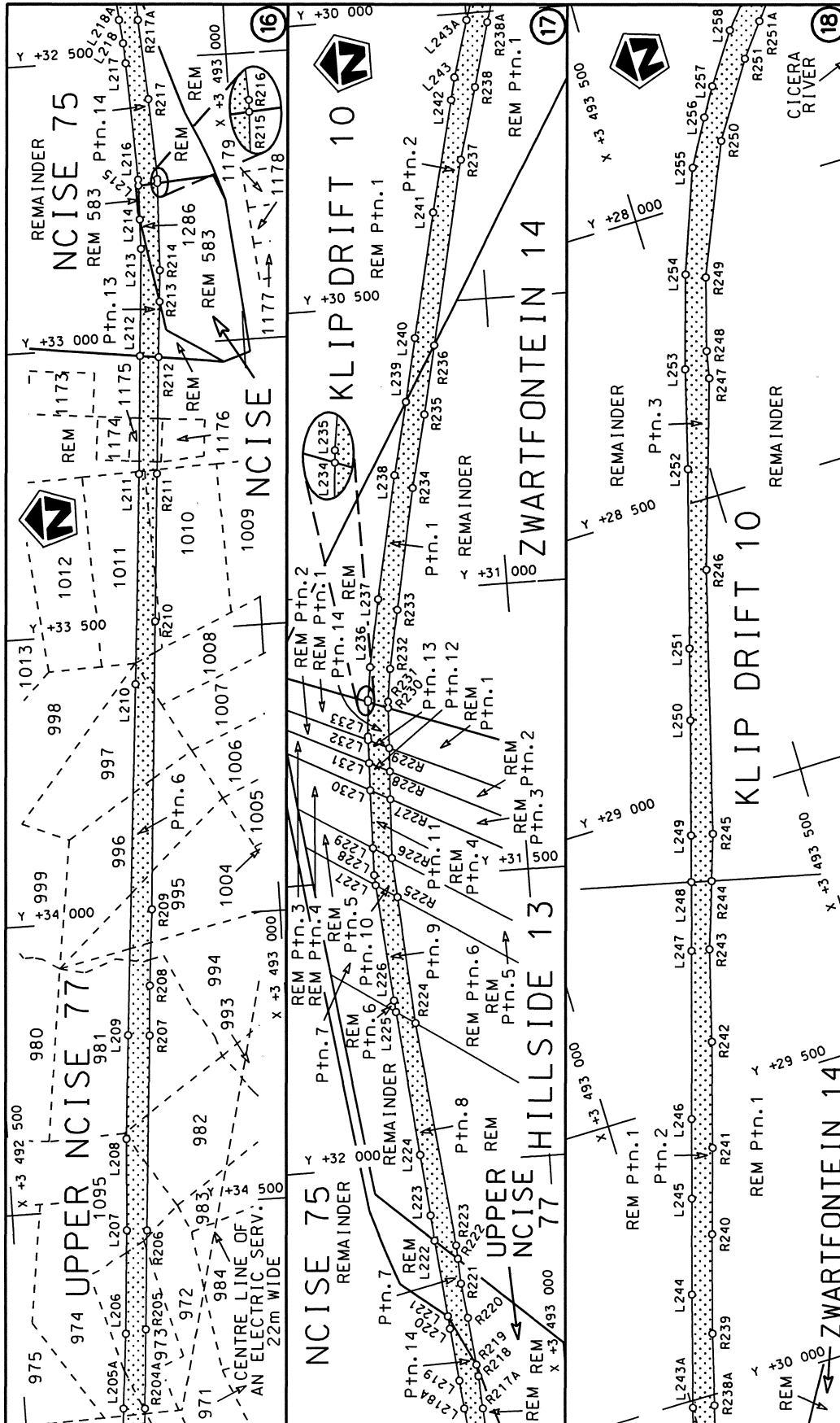


<p>Die Suid Afrikaanse Nasionale Padagentskap Beperk The South African National Roads Agency Limited</p>	<p>Die figuur getoon The figure shown</p>  <p>steldie padreserwe voor van 'n gedeelte represents the road reserve of a portion van Nasionale Roete R61 of National Route</p>	<p>Vel Sheet 4 van of 15 Plan P787/10</p>
<p>7</p> <p>R61</p> <p>Seksie Section</p>		<p>7</p>

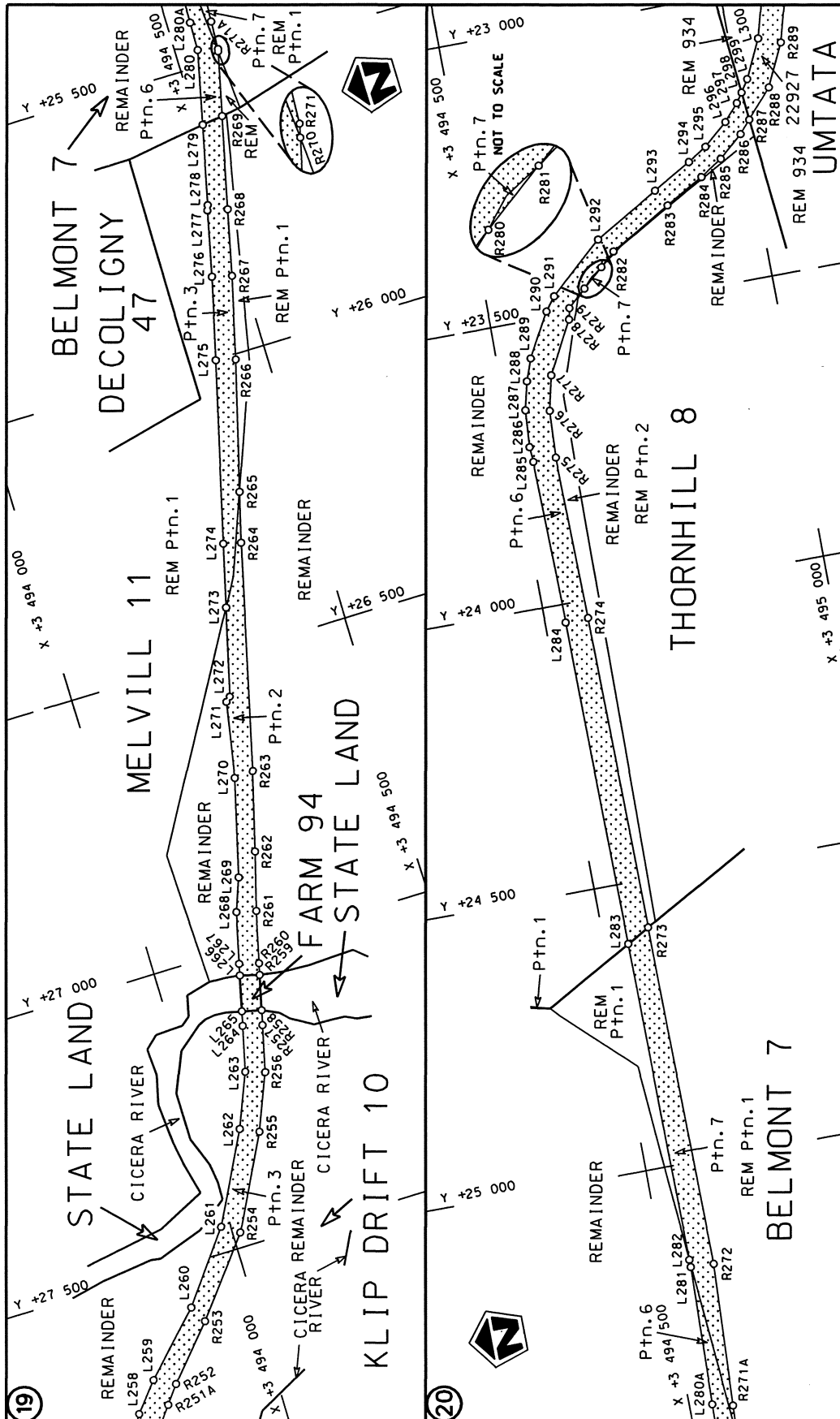




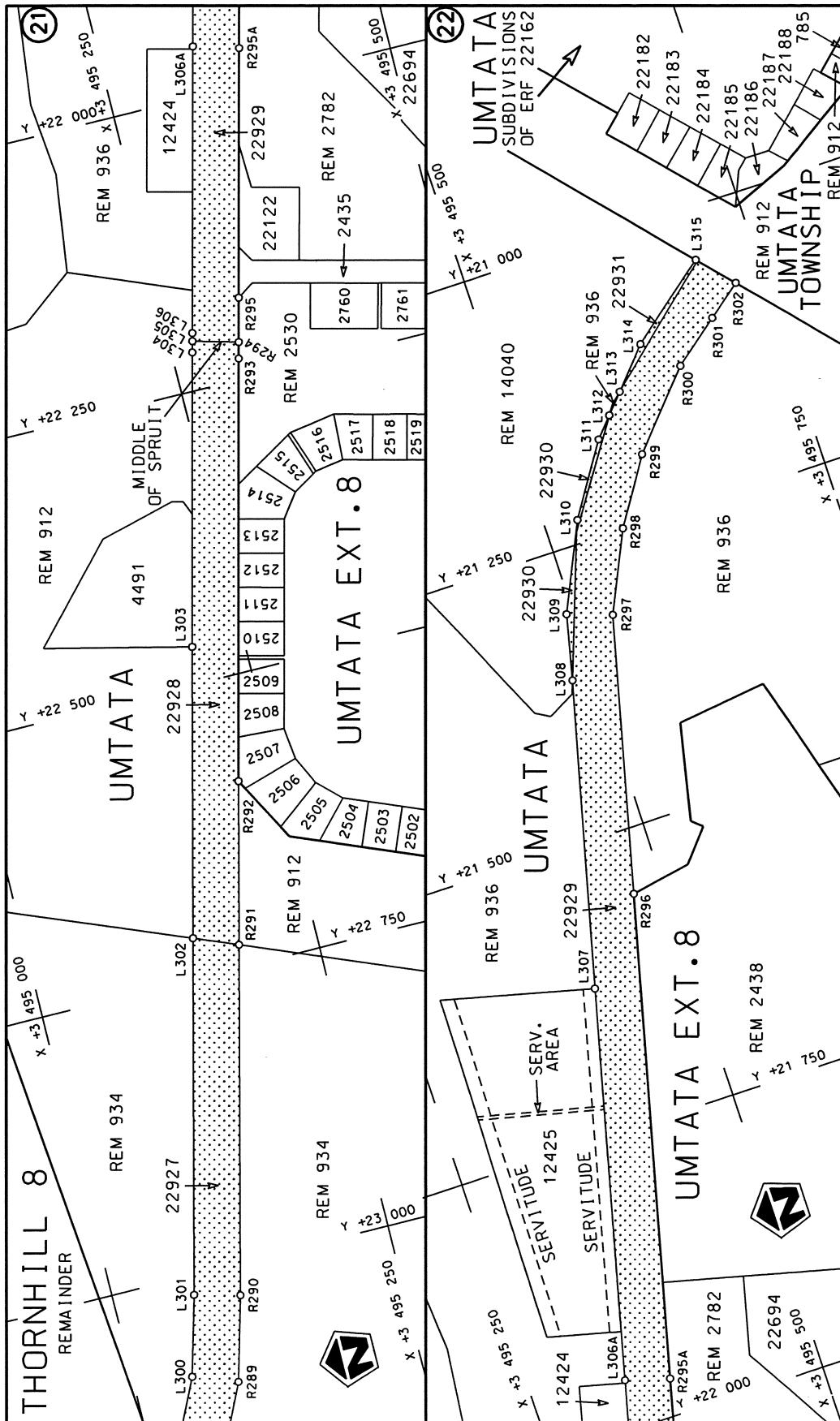
<p>Die Suid Afrikaanse Nasionale Padagentskap Beperk The South African National Roads Agency Limited</p>	<p>Die figuur getoon The figure shown</p>  <p>steeldie padreserwe voor van 'n gedeelte represents the road reserve of a portion van Nasionale Roete R61 of National Route</p> <p>Seksie Section R61</p>	<p>Vel Sheet 5 of 15 Plan P787/10</p>
--	--	---

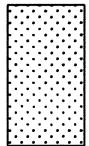


<p>Die Suid Afrikaanse Nasionale Padagentskap Beperk The South African National Roads Agency Limited</p>	<p>Die figuur getoon The figure shown</p>	<p>steldie padreserwe voor van 'n gedeelte represents the road reserve of a portion van Nasionale Roete R61 of National Route</p>	<p>Vel Sheet 6 of 15 Plan P787/10</p>
--	---	---	---



<p>Die Suid Afrikaanse Nasionale Padagentskap Beperk The South African National Roads Agency Limited</p>	<p>Die figuur getoon The figure shown</p>	<p>steldie padreserwe voor van 'n gedeelte represents the road reserve of a portion van Nasionale Roete R61 of National Route R61</p>	<p>Vel Sheet 7 van 15 of 15 Plan P787/10</p>
--	---	---	--



<p>Die Suid Afrikaanse Nasionale Padagentskap Beperk The South African National Roads Agency Limited</p>	<p>Die figuur getoon The figure shown</p>  <p>steldie padreserwe voor van 'n gedeelte represents the road reserve of a portion van Nasionale Roete R61 of National Route R61</p>	<p>Vel Sheet 8 of 15</p> <p>Plan P787/10</p>
--	---	--

PADRESERWE KOÖRDINATE				/	ROAD RESERVE CO-ORDINATES			
LINKERKANT/LEFT HAND SIDE					REGTERKANT/RIGHT HAND SIDE			
	Y	X	WG	29°	Y	X		
L1	66 176.15	3 503	495.01	R1	66 167.57	3 503	527.88	
L2	66 097.88	3 503	478.16	R2	66 091.85	3 503	511.60	
L3	66 021.92	3 503	474.32	R3	66 021.62	3 503	508.29	
L4	65 850.61	3 503	488.88	R4	65 853.68	3 503	522.74	
L5	65 729.25	3 503	493.60	R5	65 730.14	3 503	527.58	
L6	65 608.74	3 503	490.08	R6	65 606.98	3 503	524.04	
L7	65 110.90	3 503	447.98	R7	65 107.97	3 503	481.86	
L8	64 595.29	3 503	403.64	R8	64 592.38	3 503	437.51	
L9	64 179.60	3 503	366.39	R9	64 309.55	3 503	417.12	
L10	64 083.80	3 503	359.77	R10	64 080.89	3 503	393.64	
L11	63 822.42	3 503	334.74	R11	63 828.24	3 503	371.74	
L12	63 603.91	3 503	309.63	R12	63 598.00	3 503	343.11	
L13	63 524.22	3 503	295.58	R13	63 518.32	3 503	329.06	
L14	63 206.12	3 503	225.45	R14	63 193.76	3 503	266.82	
L15	62 713.79	3 503	124.00	R15	62 823.41	3 503	191.68	
L16	62 663.41	3 503	113.21	R16	62 660.79	3 503	148.32	
L17	61 963.95	3 502	964.53	R17	61 940.80	3 503	009.80	
L18	61 790.68	3 502	929.07	R18	61 787.18	3 502	979.23	
L19	61 339.69	3 502	837.01	R19	61 335.38	3 502	883.46	
L20	60 774.87	3 502	721.74	R20	60 936.06	3 502	798.80	
L21	60 485.86	3 502	662.71	R21	60 474.52	3 502	701.17	
L22	60 484.13	3 502	662.36	R22	60 469.78	3 502	700.17	
L23	60 323.57	3 502	629.92	R23	60 324.60	3 502	668.91	
L24	60 258.46	3 502	612.90	R24	60 188.03	3 502	630.15	
L25	60 194.27	3 502	589.06	R25	59 919.47	3 502	525.53	
L26	59 967.71	3 502	493.46	R26	59 910.86	3 502	518.33	
L27	59 920.89	3 502	469.54	R27	59 626.42	3 502	342.94	
L28	59 795.42	3 502	399.14	R28	59 273.18	3 502	115.04	
L29	59 611.75	3 502	280.23	R29	59 253.66	3 502	102.43	
L30	59 250.47	3 502	046.35	R30	59 022.45	3 501	939.13	
L31	59 175.15	3 501	997.54	R31	58 914.03	3 501	851.21	
L32	59 035.37	3 501	893.21	R32	58 704.19	3 501	636.14	
L33	58 916.66	3 501	783.65	R33	58 530.62	3 501	457.17	
L34	58 430.23	3 501	281.06	R34	58 369.20	3 501	290.98	
L35	58 238.96	3 501	083.16	R35	58 112.95	3 501	023.11	
L36	57 872.93	3 500	705.03	R36	58 092.30	3 501	001.35	
L37	57 584.27	3 500	407.13	R37	57 919.52	3 500	820.81	
L38	57 507.51	3 500	328.33	R38	57 770.44	3 500	664.22	
L39	57 409.98	3 500	220.83	R39	57 733.24	3 500	624.73	
L40	57 268.21	3 500	010.79	R40	57 620.39	3 500	506.29	
L41	57 258.33	3 499	993.90	R41	57 408.16	3 500	282.63	
L42	57 048.09	3 499	634.60	R42	57 360.26	3 500	226.44	
L43	56 945.85	3 499	540.19	R43	57 258.43	3 500	073.11	
L44	56 927.85	3 499	523.44	R44	57 093.54	3 499	790.06	
L45	56 853.76	3 499	486.17	R45	57 038.02	3 499	694.78	
L46	56 775.53	3 499	463.89	R46	56 963.08	3 499	605.85	
L47	56 689.32	3 499	451.08	R47	56 906.17	3 499	554.66	
L48	56 620.98	3 499	440.95	R48	56 862.69	3 499	530.25	
L49	56 287.44	3 499	395.51	R49	56 831.65	3 499	516.47	
L50	55 928.02	3 499	349.67	R50	56 770.52	3 499	497.50	
L51	55 784.47	3 499	327.55	R51	56 768.60	3 499	497.22	

Vel	9	Van	15	P787/10
Sheet		of		

PADRESERWE KOÖRDINATE				/	ROAD RESERVE CO-ORDINATES				
LINKERKANT/LEFT HAND SIDE					REGTERKANT/RIGHT HAND SIDE				
	Y	X	WG	29°	Y	X			
L52	55 430.67	3 499 280.42		R52	56 616.20	3 499 474.60			
L53	55 249.15	3 499 272.14		R53	56 282.82	3 499 429.18			
L54	55 204.27	3 499 273.27		R54	55 922.84	3 499 383.27			
L55	55 127.99	3 499 276.02		R55	55 775.91	3 499 358.67			
L56	54 390.41	3 499 326.00		R56	55 427.42	3 499 317.59			
L57	53 431.17	3 499 390.50		R57	55 249.42	3 499 309.80			
L58	53 251.99	3 499 397.62		R58	55 207.95	3 499 310.25			
L59	53 130.98	3 499 406.93		R59	55 130.72	3 499 311.39			
L60	52 952.66	3 499 422.64		R60	54 392.76	3 499 360.94			
L61	52 771.86	3 499 441.62		R61	53 645.91	3 499 412.66			
L62	52 654.39	3 499 460.83		R62	53 623.80	3 499 413.99			
L63	52 586.20	3 499 478.38		R63	53 434.28	3 499 425.96			
L64	52 497.19	3 499 501.28		R64	53 255.37	3 499 445.45			
L65	52 341.70	3 499 536.81		R65	52 956.30	3 499 466.48			
L66	52 186.14	3 499 572.60		R66	52 779.12	3 499 486.04			
L67	52 031.67	3 499 608.04		R67	52 663.19	3 499 505.78			
L68	51 686.81	3 499 686.94		R68	52 584.59	3 499 521.39			
L69	51 542.75	3 499 720.32		R69	52 505.89	3 499 537.02			
L70	51 367.83	3 499 762.74		R70	52 351.13	3 499 574.60			
L71	51 276.11	3 499 778.64		R71	52 195.37	3 499 610.79			
L72	51 254.16	3 499 781.45		R72	52 040.11	3 499 645.48			
L73	51 207.19	3 499 782.89		R73	51 770.26	3 499 707.45			
L74	51 057.93	3 499 763.88		R74	51 687.40	3 499 727.52			
L75	50 970.50	3 499 733.18		R75	51 551.38	3 499 759.52			
L76	50 868.95	3 499 677.54		R76	51 374.60	3 499 800.76			
L77	50 822.84	3 499 635.36		R77	51 264.20	3 499 815.72			
L78	50 719.29	3 499 544.84		R78	51 212.36	3 499 821.35			
L79	50 641.51	3 499 481.22		R79	51 049.79	3 499 801.82			
L80	50 584.24	3 499 431.17		R80	50 952.86	3 499 768.20			
L81	50 531.91	3 499 389.78		R81	50 838.58	3 499 710.74			
L82	50 377.25	3 499 322.52		R82	50 777.85	3 499 658.59			
L83	50 275.91	3 499 306.18		R83	50 687.09	3 499 581.66			
L84	50 242.23	3 499 303.49		R84	50 617.09	3 499 509.33			
L85	50 051.30	3 499 278.99		R85	50 567.66	3 499 459.78			
L86	49 920.02	3 499 261.67		R86	50 512.32	3 499 419.74			
L87	49 838.45	3 499 255.21		R87	50 365.86	3 499 370.75			
L88	49 660.82	3 499 236.50		R88	50 273.19	3 499 346.35			
L89	49 482.67	3 499 212.88		R89	50 223.71	3 499 337.99			
L90	49 323.31	3 499 195.46		R90	50 171.30	3 499 329.77			
L91	49 244.41	3 499 186.13		R91	50 047.40	3 499 317.32			
L92	49 128.40	3 499 173.95		R92	49 915.82	3 499 303.56			
L93	49 065.89	3 499 167.10		R93	49 835.14	3 499 294.42			
L94	48 894.18	3 499 122.65		R94	49 656.55	3 499 273.73			
L95	48 771.75	3 499 062.81		R95	49 477.35	3 499 251.10			
L96	48 662.62	3 498 983.38		R96	49 319.22	3 499 234.76			
L97	48 582.32	3 498 900.36		R97	49 241.91	3 499 225.94			
L98	48 498.64	3 498 772.83		R98	49 124.64	3 499 210.70			
L99	48 458.97	3 498 699.34		R99	49 060.75	3 499 202.53			
L100	48 389.92	3 498 533.67		R100	48 883.96	3 499 156.64			
L101	48 331.75	3 498 396.96		R101	48 755.01	3 499 093.83			
L102	48 303.46	3 498 318.85		R102	48 637.80	3 499 008.72			
					Vel	10	Van	15	P787/10
					Sheet		of		

PADRESERWE KOÖRDINATE				/	ROAD RESERVE CO-ORDINATES			
LINKERKANT/LEFT HAND SIDE					REGTERKANT/RIGHT HAND SIDE			
	Y	X	WG	29°	Y	X		
L103	48 294.87	3 498	295.09	R103	48 548.83	3 498	920.71	
L104	48 237.52	3 498	163.76	R104	48 489.92	3 498	847.68	
L105	48 132.26	3 497	904.25	R105	48 438.74	3 498	747.47	
L106	48 054.31	3 497	760.54	R106	48 358.68	3 498	554.39	
L107	48 007.79	3 497	696.36	R107	48 297.81	3 498	408.07	
L108	47 934.92	3 497	596.48	R108	48 287.73	3 498	384.01	
L109	47 769.28	3 497	448.84	R109	48 259.65	3 498	312.99	
L110	47 632.45	3 497	334.29	R110	48 205.62	3 498	176.96	
L111	47 573.17	3 497	284.94	R111	48 167.30	3 498	082.58	
L112	47 493.20	3 497	218.38	R112	48 099.42	3 497	916.50	
L113	47 355.07	3 497	103.66	R113	48 059.23	3 497	838.11	
L114	47 213.58	3 496	986.50	R114	48 051.31	3 497	822.91	
L115	47 076.30	3 496	872.12	R115	47 978.09	3 497	717.54	
L116	46 939.19	3 496	757.24	R116	47 908.74	3 497	625.12	
L117	46 786.05	3 496	629.02	R117	47 830.12	3 497	559.44	
L118	46 646.05	3 496	513.59	R118	47 809.41	3 497	539.93	
L119	46 499.68	3 496	407.41	R119	47 744.87	3 497	478.91	
L120	46 345.62	3 496	311.58	R120	47 608.43	3 497	360.16	
L121	46 262.58	3 496	261.13	R121	47 468.82	3 497	246.47	
L122	46 214.82	3 496	235.91	R122	47 331.01	3 497	131.91	
L123	46 151.79	3 496	193.66	R123	47 191.84	3 497	016.07	
L124	46 034.50	3 496	123.27	R124	47 053.16	3 496	901.88	
L125	45 813.03	3 495	987.65	R125	46 914.25	3 496	787.01	
L126	45 763.45	3 495	959.87	R126	46 775.54	3 496	672.25	
L127	45 656.12	3 495	903.09	R127	46 621.61	3 496	544.72	
L128	45 562.76	3 495	863.63	R128	46 413.86	3 496	392.30	
L129	45 512.87	3 495	845.67	R129	46 327.40	3 496	341.89	
L130	45 411.87	3 495	809.41	R130	46 240.78	3 496	290.24	
L131	45 241.20	3 495	747.95	R131	46 186.62	3 496	258.16	
L132	45 054.44	3 495	680.78	R132	46 121.14	3 496	219.61	
L133	44 871.73	3 495	600.88	R133	46 017.58	3 496	159.37	
L134	44 834.80	3 495	584.21	R134	45 864.80	3 496	065.88	
L135	44 802.81	3 495	569.18	R135	45 742.98	3 495	993.55	
L136	44 728.61	3 495	533.95	R136	45 638.64	3 495	943.56	
L137	44 630.32	3 495	471.81	R137	45 497.65	3 495	880.44	
L138	44 580.62	3 495	437.98	R138	45 458.39	3 495	865.15	
L139	44 431.06	3 495	336.57	R139	45 400.32	3 495	842.58	
L140	44 369.52	3 495	296.62	R140	45 230.85	3 495	782.40	
L141	44 299.62	3 495	250.54	R141	45 042.31	3 495	714.32	
L142	44 038.24	3 495	072.89	R142	44 890.16	3 495	660.77	
L143	43 864.31	3 494	958.40	R143	44 816.67	3 495	627.59	
L144	43 697.57	3 494	847.09	R144	44 709.60	3 495	569.41	
L145	43 482.69	3 494	703.77	R145	44 558.94	3 495	468.64	
L146	43 358.53	3 494	605.51	R146	44 408.51	3 495	369.71	
L147	43 259.72	3 494	512.67	R147	44 261.29	3 495	268.99	
L148	43 227.26	3 494	484.71	R148	44 095.72	3 495	155.84	
L149	43 128.13	3 494	391.23	R149	43 943.68	3 495	058.30	
L150	43 013.45	3 494	277.04	R150	43 776.84	3 494	946.55	
L151	42 901.75	3 494	166.80	R151	43 745.54	3 494	925.61	
L152	42 618.25	3 493	887.56	R152	43 627.27	3 494	846.34	
L153	42 355.85	3 493	629.64	R153	43 462.61	3 494	732.35	
				Vel	11	Van	15	P787/10
				Sheet		of		

PADRESERWE KOÖRDINATE				/	ROAD RESERVE CO-ORDINATES			
LINKERKANT/LEFT HAND SIDE					REGTERKANT/RIGHT HAND SIDE			
	Y	X	WG	29°	Y	X		
L154	41 965.74	3 493 246.62		R154	43 335.39	3 494 632.90		
L155	41 832.05	3 493 113.30		R155	43 269.94	3 494 573.73		
L156	41 728.07	3 493 009.57		R156	43 198.69	3 494 502.57		
L157	41 608.10	3 492 895.04		R157	43 095.46	3 494 407.28		
L158	41 529.77	3 492 831.30		R158	42 987.09	3 494 300.58		
L159	41 435.68	3 492 769.54		R159	42 934.67	3 494 248.94		
L160	41 341.66	3 492 718.77		R160	42 892.99	3 494 207.52		
L161	41 231.66	3 492 671.89		R161	42 588.09	3 493 907.47		
L162	41 036.87	3 492 617.88		R162	42 356.87	3 493 680.22		
L163	40 884.25	3 492 582.34		R163	42 093.21	3 493 418.26		
L164	40 764.68	3 492 554.45		R164	41 942.15	3 493 269.80		
L165	40 672.30	3 492 532.93		R165	41 863.53	3 493 191.93		
L166	40 575.13	3 492 510.28		R166	41 741.33	3 493 070.42		
L167	40 567.12	3 492 508.77		R167	41 586.00	3 492 919.69		
L168	40 555.98	3 492 506.66		R168	41 511.58	3 492 863.22		
L169	40 540.82	3 492 503.80		R169	41 414.41	3 492 801.46		
L170	40 534.17	3 492 502.55		R170	41 329.66	3 492 757.02		
L171	40 471.66	3 492 488.44		R171	41 220.04	3 492 709.80		
L172	40 315.70	3 492 453.66		R172	41 029.37	3 492 657.83		
L173	40 215.09	3 492 436.55		R173	40 781.35	3 492 600.91		
L174	40 145.79	3 492 433.84		R174	40 567.85	3 492 551.51		
L175	40 140.45	3 492 434.40		R175	40 558.66	3 492 549.55		
L176	40 067.23	3 492 442.08		R176	40 548.32	3 492 547.34		
L177	39 988.08	3 492 459.64		R177	40 529.04	3 492 543.22		
L178	39 910.66	3 492 488.53		R178	40 513.05	3 492 539.81		
L179	39 744.11	3 492 598.19		R179	40 463.06	3 492 527.87		
L180	39 668.35	3 492 659.24		R180	40 307.81	3 492 490.20		
L181	39 632.80	3 492 688.33		R181	40 207.54	3 492 480.50		
L182	39 509.01	3 492 785.54		R182	40 147.24	3 492 474.66		
L183	39 455.38	3 492 809.90		R183	40 075.16	3 492 481.56		
L184	39 345.98	3 492 827.59		R184	39 926.28	3 492 524.71		
L185	39 255.08	3 492 806.41		R185	39 766.31	3 492 631.46		
L186	39 195.70	3 492 783.51		R186	39 609.27	3 492 763.16		
L187	39 144.99	3 492 760.26		R187	39 523.49	3 492 817.39		
L188	39 070.62	3 492 704.44		R188	39 461.68	3 492 844.71		
L189	38 994.45	3 492 632.28		R189	39 351.57	3 492 862.14		
L190	38 923.54	3 492 531.04		R190	39 228.00	3 492 862.38		
L191	38 823.52	3 492 454.83		R191	39 155.46	3 492 844.31		
L192	38 753.29	3 492 416.50		R192	39 047.34	3 492 753.67		
L193	38 690.16	3 492 398.10		R193	38 996.24	3 492 691.72		
L194	38 561.15	3 492 384.51		R194	38 821.16	3 492 492.75		
L195	38 560.89	3 492 384.48		R195	38 736.71	3 492 447.32		
L196	38 326.98	3 492 401.51		R196	38 608.01	3 492 421.08		
L197	38 300.17	3 492 403.46		R197	38 431.04	3 492 430.18		
L198	37 570.77	3 492 459.93		R198	37 164.94	3 492 530.08		
L199	37 528.46	3 492 463.09		R199	37 020.70	3 492 538.91		
L200	37 148.41	3 492 492.96		R200	36 838.23	3 492 555.91		
L201	36 632.15	3 492 534.66		R201	36 375.99	3 492 591.98		
L202	36 372.16	3 492 553.26		R202	36 176.78	3 492 611.70		
L203	35 843.61	3 492 594.36		R203	35 479.55	3 492 660.25		
L204	35 194.39	3 492 646.30		R204	35 122.35	3 492 688.56		
				Vel	12	Van	15	P787/10
				Sheet		of		



PADRESERWE KOÖRDINATE				/	ROAD RESERVE CO-ORDINATES		
LINKERKANT/LEFT HAND SIDE					REGTERKANT/RIGHT HAND SIDE		
	Y	X	WG	29°	Y	X	
L205	34 917.85	3 492 664.91		R205	34 712.78	3 492 719.52	
L206	34 718.16	3 492 683.59		R206	34 541.02	3 492 732.68	
L207	34 538.47	3 492 697.05		R207	34 203.35	3 492 759.29	
L208	34 379.97	3 492 706.98		R208	34 116.71	3 492 765.42	
L209	34 200.27	3 492 721.44		R209	33 984.30	3 492 777.26	
L210	33 590.05	3 492 773.77		R210	33 482.73	3 492 815.25	
L211	33 223.27	3 492 803.27		R211	33 224.88	3 492 835.10	
L212	33 017.15	3 492 818.01		R212	33 021.45	3 492 850.79	
L213	32 830.55	3 492 831.35		R213	32 924.65	3 492 858.26	
L214	32 779.09	3 492 832.53		R214	32 870.02	3 492 862.47	
L215	32 720.05	3 492 833.90		R215	32 717.69	3 492 867.83	
L216	32 709.57	3 492 834.14		R216	32 710.79	3 492 868.07	
L217	32 505.02	3 492 824.76		R217	32 570.22	3 492 860.85	
L218	32 469.98	3 492 822.60		R218	32 374.55	3 492 847.12	
L219	32 379.86	3 492 812.59		R219	32 354.56	3 492 844.98	
L220	32 288.21	3 492 803.09		R220	32 271.66	3 492 836.09	
L221	32 266.28	3 492 800.97		R221	32 211.30	3 492 828.50	
L222	32 133.34	3 492 788.12		R222	32 167.93	3 492 826.19	
L223	32 088.98	3 492 784.07		R223	32 144.44	3 492 824.94	
L224	31 982.84	3 492 774.17		R224	31 753.63	3 492 783.25	
L225	31 731.77	3 492 750.85		R225	31 532.14	3 492 768.28	
L226	31 711.68	3 492 748.94		R226	31 463.36	3 492 763.74	
L227	31 508.77	3 492 731.82		R227	31 360.89	3 492 768.83	
L228	31 490.97	3 492 730.69		R228	31 312.47	3 492 771.20	
L229	31 443.87	3 492 732.03		R229	31 271.56	3 492 773.20	
L230	31 343.04	3 492 734.90		R230	31 201.81	3 492 776.62	
L231	31 295.53	3 492 736.25		R231	31 190.52	3 492 777.17	
L232	31 255.44	3 492 737.40		R232	31 133.70	3 492 785.23	
L233	31 249.30	3 492 737.57		R233	31 031.89	3 492 805.16	
L234	31 189.14	3 492 742.23		R234	30 820.93	3 492 847.85	
L235	31 185.59	3 492 742.51		R235	30 694.06	3 492 877.27	
L236	31 128.78	3 492 750.57		R236	30 574.69	3 492 903.22	
L237	31 010.85	3 492 773.08		R237	30 254.82	3 492 972.74	
L238	30 796.25	3 492 817.83		R238	30 129.91	3 493 007.56	
L239	30 669.73	3 492 846.89		R239	29 897.46	3 493 070.24	
L240	30 559.52	3 492 870.94		R240	29 731.50	3 493 119.64	
L241	30 342.88	3 492 918.22		R241	29 587.91	3 493 163.61	
L242	30 149.08	3 492 963.71		R242	29 410.78	3 493 215.38	
L243	30 110.10	3 492 972.26		R243	29 255.72	3 493 257.94	
L244	29 822.31	3 493 055.93		R244	29 142.45	3 493 295.52	
L245	29 662.47	3 493 103.60		R245	29 064.28	3 493 321.46	
L246	29 529.97	3 493 143.31		R246	28 619.12	3 493 443.15	
L247	29 249.44	3 493 227.46		R247	28 299.15	3 493 544.22	
L248	29 134.46	3 493 261.47		R248	28 252.29	3 493 553.60	
L249	29 056.52	3 493 284.52		R249	28 128.31	3 493 588.72	
L250	28 863.50	3 493 341.12		R250	27 907.48	3 493 682.72	
L251	28 743.16	3 493 375.73		R251	27 781.88	3 493 763.63	
L252	28 441.25	3 493 462.91		R252	27 695.31	3 493 829.97	
L253	28 272.50	3 493 508.79		R253	27 604.56	3 493 908.97	
L254	28 113.95	3 493 556.72		R254	27 473.89	3 494 013.05	
L255	27 938.43	3 493 621.88		R255	27 315.58	3 494 096.04	

Vel	13	Van	15	P787/10
Sheet		of		

PADRESERWE KOÖRDINATE				/	ROAD RESERVE CO-ORDINATES		
LINKERKANT/LEFT HAND SIDE					REGTERKANT/RIGHT HAND SIDE		
	Y	X	WG	29°	Y	X	
L256	27 859.68	3 493	666.56	R256	27 219.17	3 494	135.40
L257	27 811.40	3 493	695.47	R257	27 139.36	3 494	154.76
L258	27 726.61	3 493	752.54	R258	27 113.98	3 494	160.92
L259	27 677.10	3 493	794.24	R259	27 053.98	3 494	175.47
L260	27 574.91	3 493	893.47	R260	27 034.34	3 494	180.23
L261	27 454.69	3 493	983.60	R261	26 945.23	3 494	201.84
L262	27 300.81	3 494	064.27	R262	26 845.05	3 494	229.75
L263	27 208.37	3 494	102.00	R263	26 709.26	3 494	266.65
L264	27 130.38	3 494	120.92	R264	26 319.95	3 494	362.24
L265	27 105.74	3 494	126.89	R265	26 233.70	3 494	385.43
L266	27 044.85	3 494	141.66	R266	26 009.26	3 494	445.78
L267	27 025.06	3 494	146.46	R267	25 866.91	3 494	481.41
L268	26 936.98	3 494	167.83	R268	25 753.13	3 494	507.64
L269	26 880.14	3 494	189.15	R269	25 593.74	3 494	545.21
L270	26 711.63	3 494	232.99	R270	25 483.28	3 494	571.26
L271	26 579.91	3 494	257.24	R271	25 479.32	3 494	572.25
L272	26 572.63	3 494	265.50	R272	25 180.76	3 494	586.50
L273	26 421.39	3 494	304.12	R273	24 583.58	3 494	580.96
L274	26 312.75	3 494	331.87	R274	24 031.76	3 494	575.81
L275	26 000.68	3 494	411.85	R275	23 744.11	3 494	570.86
L276	25 858.76	3 494	447.40	R276	23 661.54	3 494	575.37
L277	25 745.33	3 494	473.50	R277	23 600.84	3 494	589.23
L278	25 736.52	3 494	476.79	R278	23 510.43	3 494	637.87
L279	25 599.27	3 494	508.53	R279	23 490.80	3 494	641.69
L280	25 471.42	3 494	538.10	R280	23 462.01	3 494	674.14
L281	25 179.59	3 494	546.54	R281	23 430.48	3 494	709.89
L282	25 166.65	3 494	546.42	R282	23 407.28	3 494	735.64
L283	24 605.55	3 494	541.18	R283	23 345.49	3 494	843.64
L284	24 032.25	3 494	535.82	R284	23 306.92	3 494	910.55
L285	23 744.76	3 494	530.87	R285	23 281.51	3 494	948.85
L286	23 718.22	3 494	529.07	R286	23 245.33	3 494	990.68
L287	23 653.47	3 494	533.74	R287	23 223.38	3 495	010.41
L288	23 603.80	3 494	545.66	R288	23 173.76	3 495	053.93
L289	23 565.49	3 494	559.35	R289	23 100.14	3 495	088.80
L290	23 489.24	3 494	601.25	R290	23 027.06	3 495	108.80
L291	23 465.44	3 494	619.10	R291	22 730.24	3 495	181.56
L292	23 381.89	3 494	713.15	R292	22 591.21	3 495	215.64
L293	23 316.04	3 494	826.64	R293	22 231.50	3 495	305.09
L294	23 277.51	3 494	893.54	R294	22 217.45	3 495	308.56
L295	23 255.82	3 494	926.59	R295	22 179.76	3 495	317.90
L296	23 219.63	3 494	968.41	R296	21 555.88	3 495	472.82
L297	23 190.61	3 494	994.08	R297	21 318.36	3 495	531.97
L298	23 174.25	3 495	005.59	R298	21 249.05	3 495	564.17
L299	23 152.63	3 495	019.68	R299	21 192.54	3 495	600.57
L300	23 086.20	3 495	051.15	R300	21 129.48	3 495	657.01
L301	23 017.04	3 495	070.07	R301	21 098.25	3 495	696.42
L302	22 715.06	3 495	144.31	R302	21 075.41	3 495	725.24
L303	22 467.48	3 495	205.18				
L304	22 216.71	3 495	267.46				
L305	22 207.14	3 495	269.84				
L306	22 200.28	3 495	271.54				

Vel	14	Van	15	P787/10
Sheet		of		

PADRESERWE KOÖRDINATE				/	ROAD RESERVE CO-ORDINATES		
LINKERKANT/LEFT HAND SIDE					REGTERKANT/RIGHT HAND SIDE		
	Y	X	WG	29°	Y	X	
L307	21 624.00	3 495	414.65				
L308	21 361.93	3 495	480.81				
L309	21 305.28	3 495	493.95				
L310	21 229.70	3 495	529.05				
L311	21 168.22	3 495	568.66				
L312	21 150.99	3 495	584.08				
L313	21 134.21	3 495	599.09				
L314	21 100.26	3 495	629.49				
L315	21 045.42	3 495	698.68				

Vel	15	Van	15	P787/10
Sheet		of		









Printed by and obtainable from the Government Printer, Bosman Street, Private Bag X85, Pretoria, 0001  
Publications: Tel: (012) 334-4508, 334-4509, 334-4510  
Advertisements: Tel: (012) 334-4673, 334-4674, 334-4504  
Subscriptions: Tel: (012) 334-4735, 334-4736, 334-4737  
Cape Town Branch: Tel: (021) 465-7531

Gedruk deur en verkrygbaar by die Staatsdrukker, Bosmanstraat, Privaatsak X85, Pretoria, 0001  
Publikasies: Tel: (012) 334-4508, 334-4509, 334-4510  
Advertensies: Tel: (012) 334-4673, 334-4674, 334-4504  
Subskripsies: Tel: (012) 334-4735, 334-4736, 334-4737  
Kaapstad-tak: Tel: (021) 465-7531