



Government Gazette Staatskoerant

REPUBLIC OF SOUTH AFRICA
REPUBLIEK VAN SUID-AFRIKA

Vol. 570

Pretoria, 13 December 2012
Desember

No. 35975

N.B. The Government Printing Works will not be held responsible for the quality of "Hard Copies" or "Electronic Files" submitted for publication purposes



AIDS HELPLINE: 0800-0123-22 Prevention is the cure

IMPORTANT NOTICE

The Government Printing Works will not be held responsible for faxed documents not received due to errors on the fax machine or faxes received which are unclear or incomplete. Please be advised that an "OK" slip, received from a fax machine, will not be accepted as proof that documents were received by the GPW for printing. If documents are faxed to the GPW it will be the sender's responsibility to phone and confirm that the documents were received in good order.

Furthermore the Government Printing Works will also not be held responsible for cancellations and amendments which have not been done on original documents received from clients.

CONTENTS

INHOUD

<i>No.</i>		<i>Page No.</i>	<i>Gazette No.</i>	<i>No.</i>		<i>Bladsy No.</i>	<i>Koerant No.</i>
GOVERNMENT NOTICE				GOEWERMENSKENNISGEWING			
Transport, Department of				Vervoer, Departement van			
<i>Government Notice</i>				<i>Goewermentskennisgewing</i>			
1045	South African National Roads Agency Limited and the National Roads Act (7/1998): Declaration amendment of National Road R61 Section 5	3	35975	1045	Suid-Afrikaanse Nasionale Padagentskap Beperk en die Nasionale Paaie Wet (7/1998): Verklaring wysiging van Nasionale Pad R61 Seksie 5	4	35975

GOVERNMENT NOTICE

DEPARTMENT OF TRANSPORT

No. 1045

13 December 2012

THE SOUTH AFRICAN NATIONAL ROADS AGENCY LIMITED

Registration No: 98/09584/06

DECLARATION AMENDMENT OF NATIONAL ROAD R61 SECTION 5

AMENDMENT OF DECLARATION NO. 777 OF 2007

By virtue of section 40 (1)(b) of the South African National Roads Agency Limited and the National Roads Act, 1998 (Act No. 7 of 1998), I hereby amend Declaration No. 777 of 2007 by substituting sheets 1 to 18 of Plan No. P583/06, with the subjoined sheets 1 to 17 of Plan No. P785/10.

(National Road R61 Section 5: N6 – Cofimvaba)



MINISTER OF TRANSPORT

GOEWERMENTSKENNISGEWING

DEPARTEMENT VAN VERVOER

No. 1045

11 Desember 2012

DIE SUID-AFRIKAANSE NASIONALE PADAGENTSKAP BEPERK

Registrasie No: 98/09584/06

VERKLARING WYSIGING VAN NASIONALE PAD R61 SEKSIE 5.

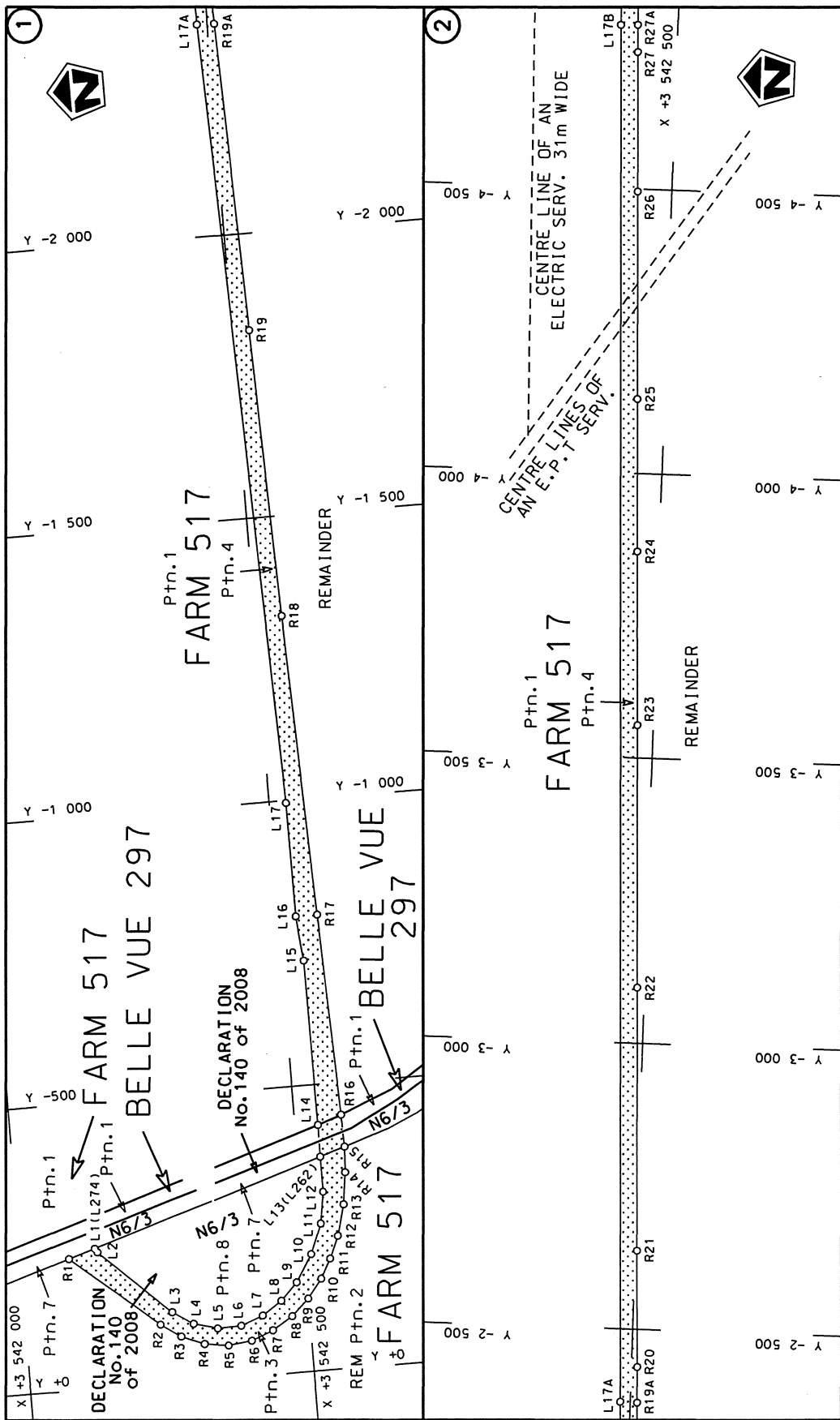
WYSIGING VAN VERKLARING NO. 777 VAN 2007

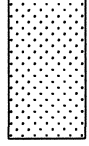
Kragtens Artikel 40(1)(b) van die Suid Afrikaanse Nasionale Padagentskap Beperk en die Nasionale Paaie Wet, 1998 (Wet no.7 van 1998), wysig ek hiermee Verklaring no.777 van 2007, deur velle 1 tot 18 van Plan no. P583/06, te vervang met meegaande velle 1 tot 17 van Plan no. P785/10.

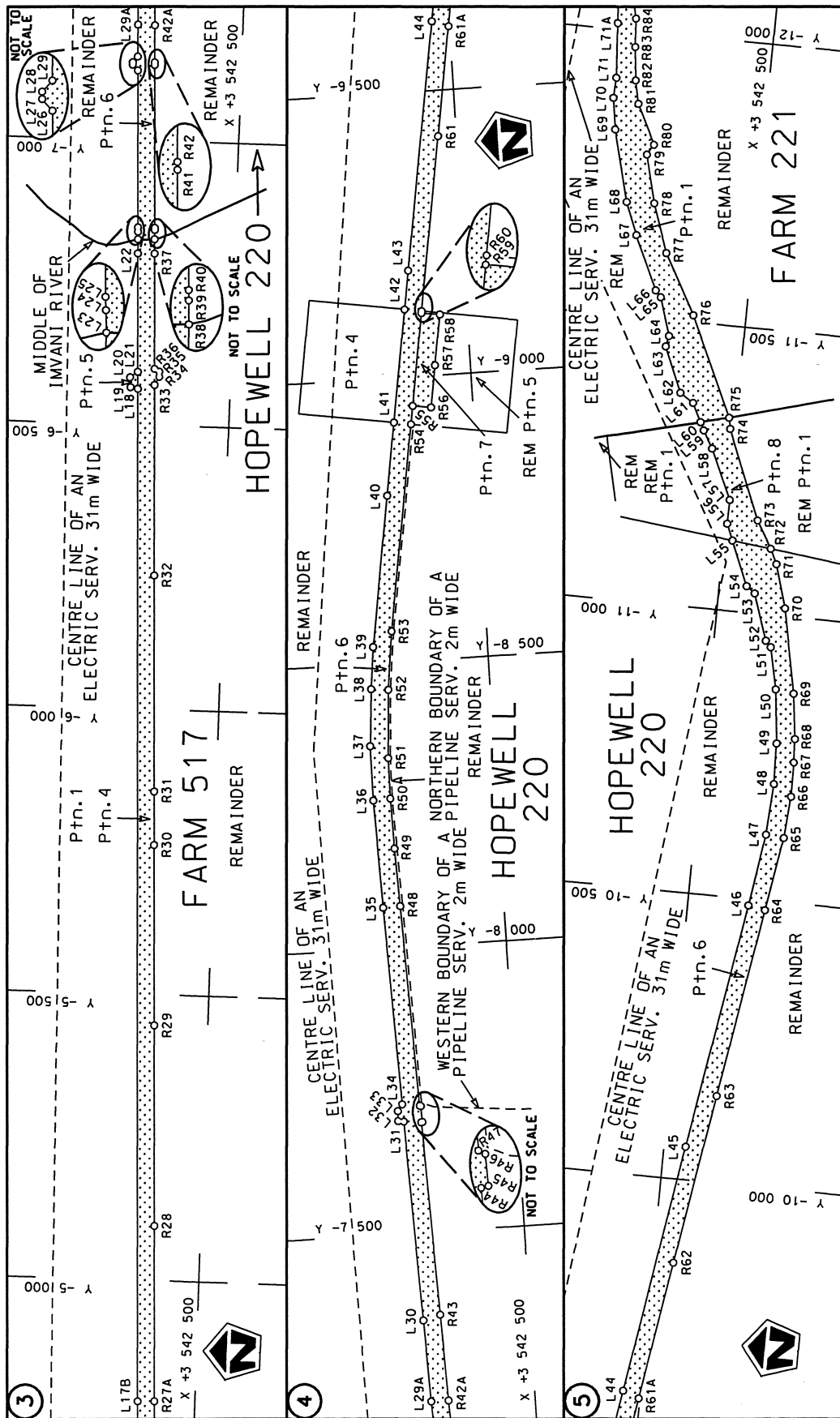
(Nasionale Pad R61 Seksie 5: N6 – Cofimvaba)

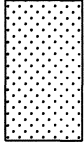


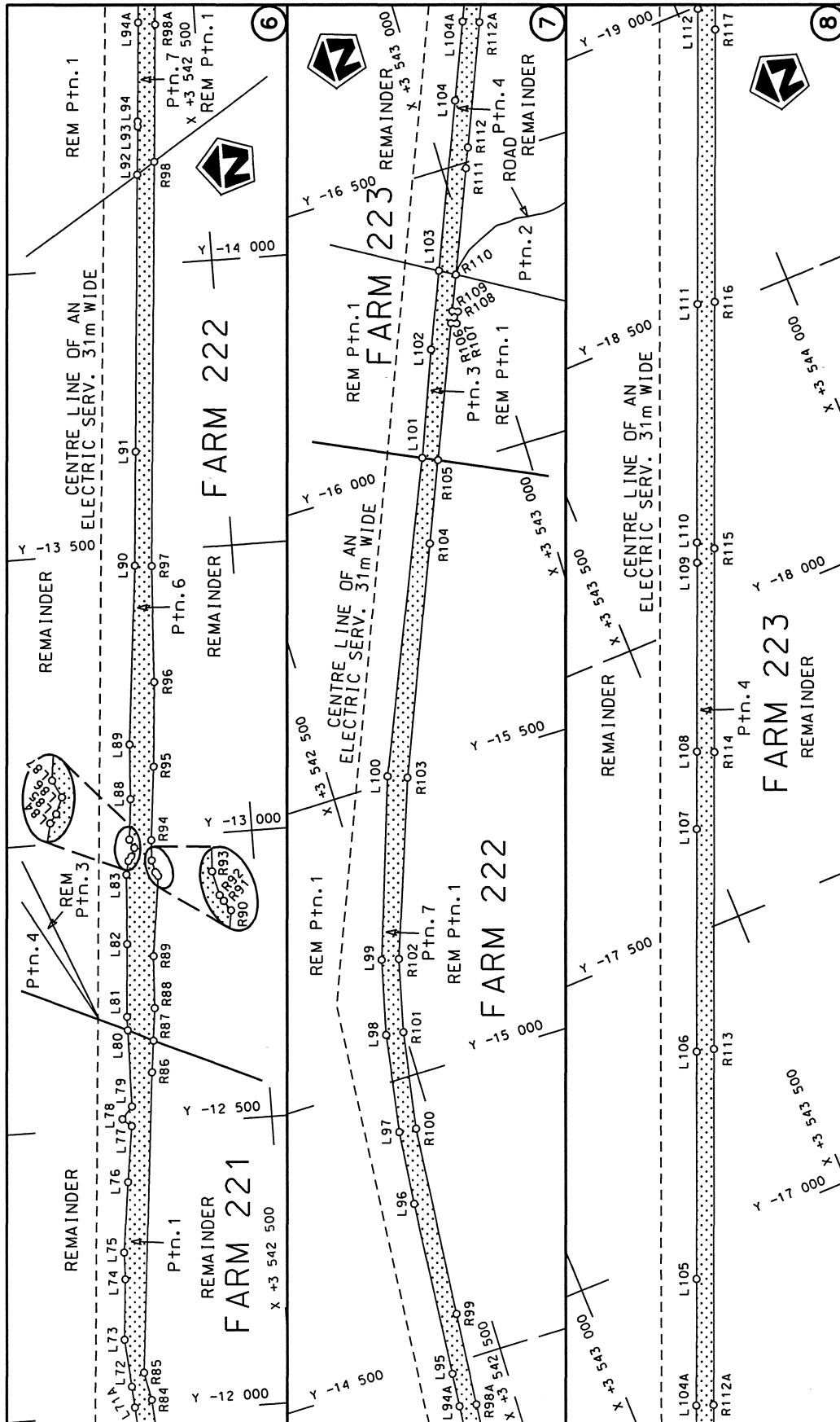
MINISTER VAN VERVOER



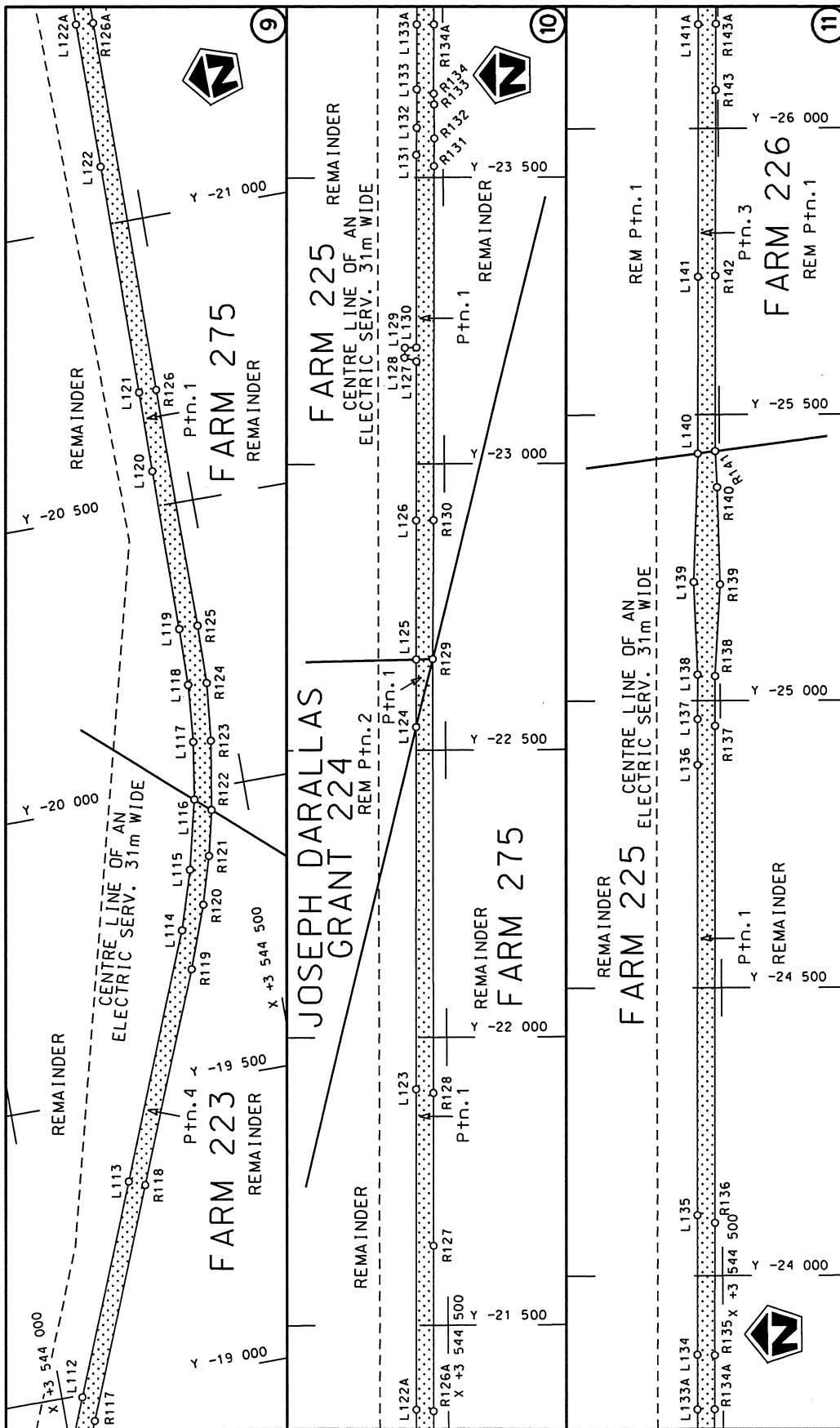
<p>Die Suid Afrikaanse Nasionale Padagentskap Beperk The South African National Roads Agency Limited</p>	<p>Die figuur getoon The figure shown</p> 	<p>steldie padreserwe voor van 'n gedeelte represents the road reserve of a portion van Nasionale Roete R61 Sektie 5 of National Route Section</p>	<p>Vel Sheet 1 of 17 Plan P785/10</p>
--	---	--	---

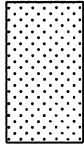


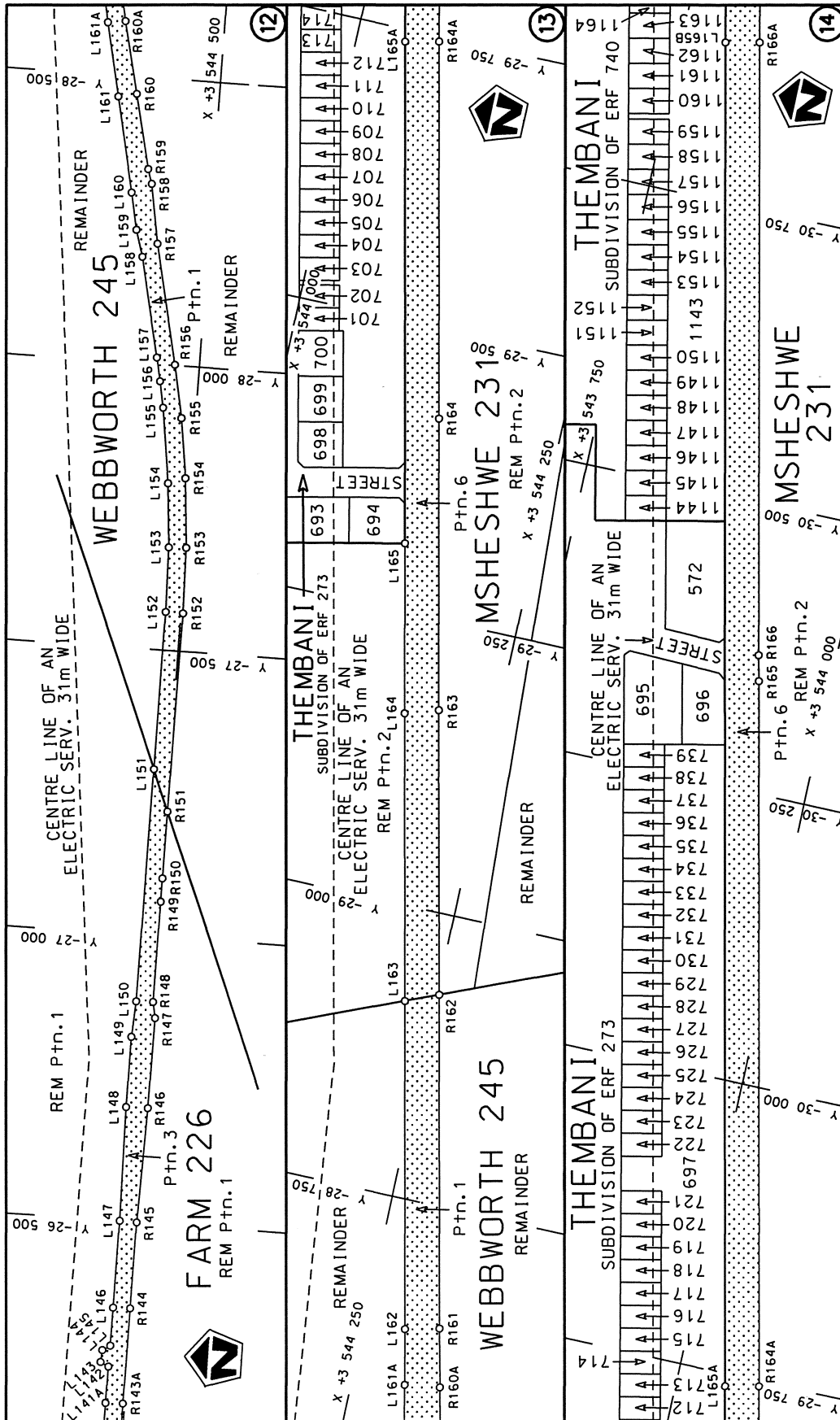
Die Suid Afrikaanse Nasionale Padagentskap Beperk The South African National Roads Agency Limited	Die figuur getoon The figure shown		steldie padreserwe voor van 'n gedeelte represents the road reserve of a portion van Nasionale Roete R61 of National Route Section	
			Vel Sheet 2 of 17	Plan P785/10



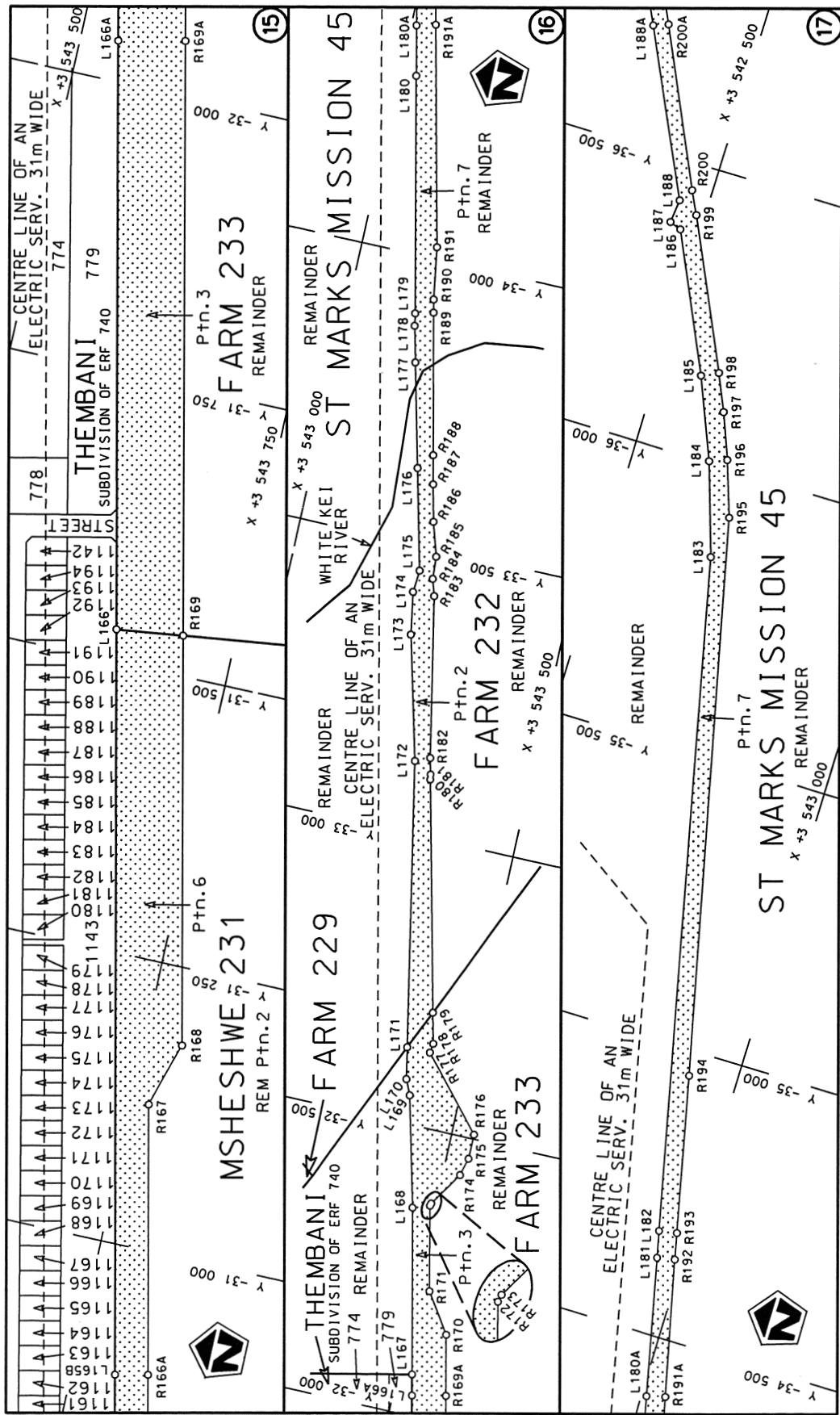
<p>Die Suid Afrikaanse Nasionale Padagentskap Beperk The South African National Roads Agency Limited</p>	<p>Die figuur getoon The figure shown</p>	<p>steldie padreserwe voor van 'n gedeelte represents the road reserve of a portion van Nasionale Roete R61 of National Route</p>	<p>Vel Sheet 3 of 17</p> <p>Plan P785/10</p>
--	---	---	--

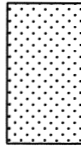


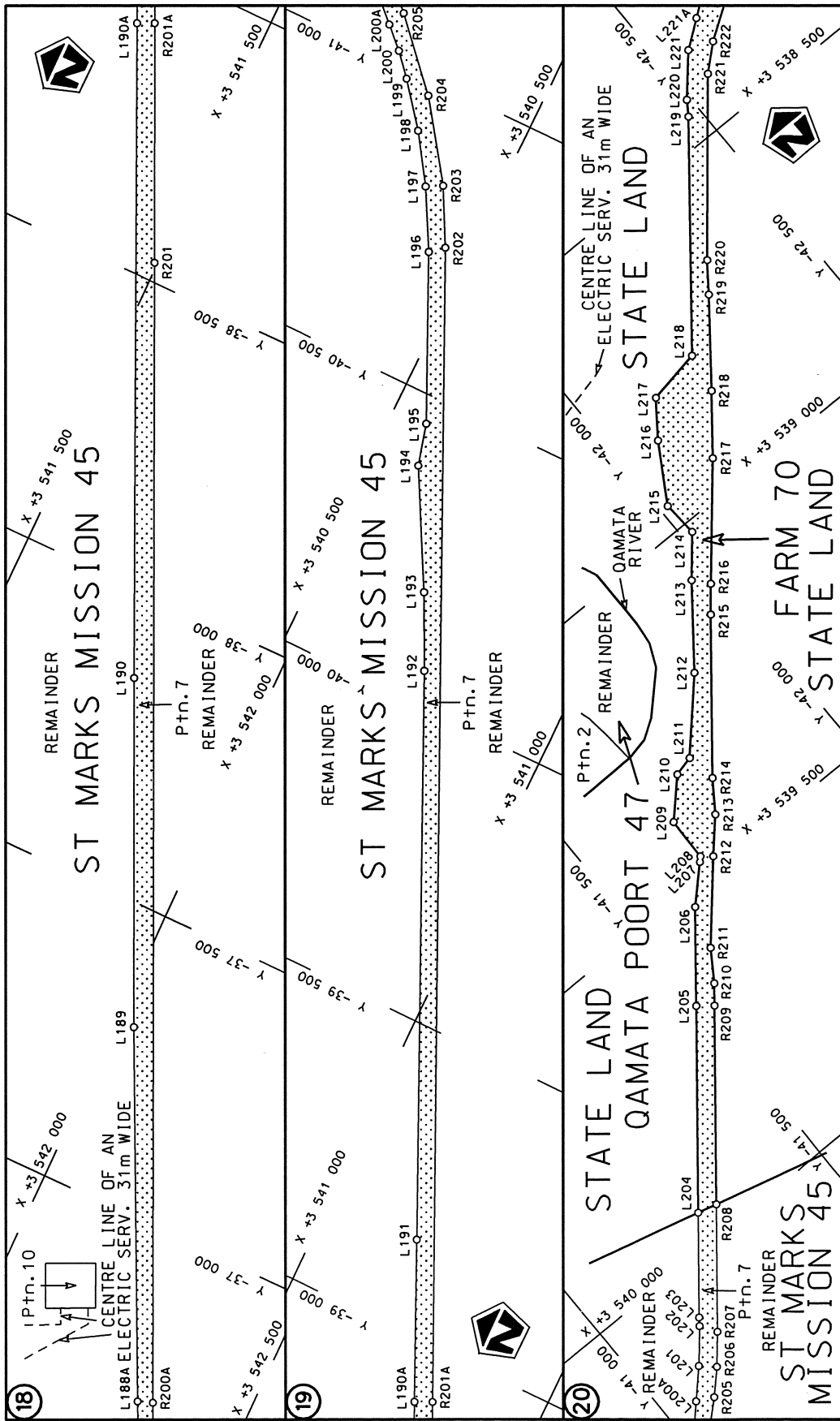
<p>Die Suid Afrikaanse Nasionale Padagentskap Beperk The South African National Roads Agency Limited</p>	<p>Die figuur getoon The figure shown</p>  <p>steldie padreserwe voor 'n gedeelte represents the road reserve of a portion van Nasionale Roete R61 of National Route</p>	<p>Vel Sheet 4 of 17 Plan P785/10</p>
--	---	---

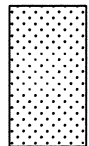


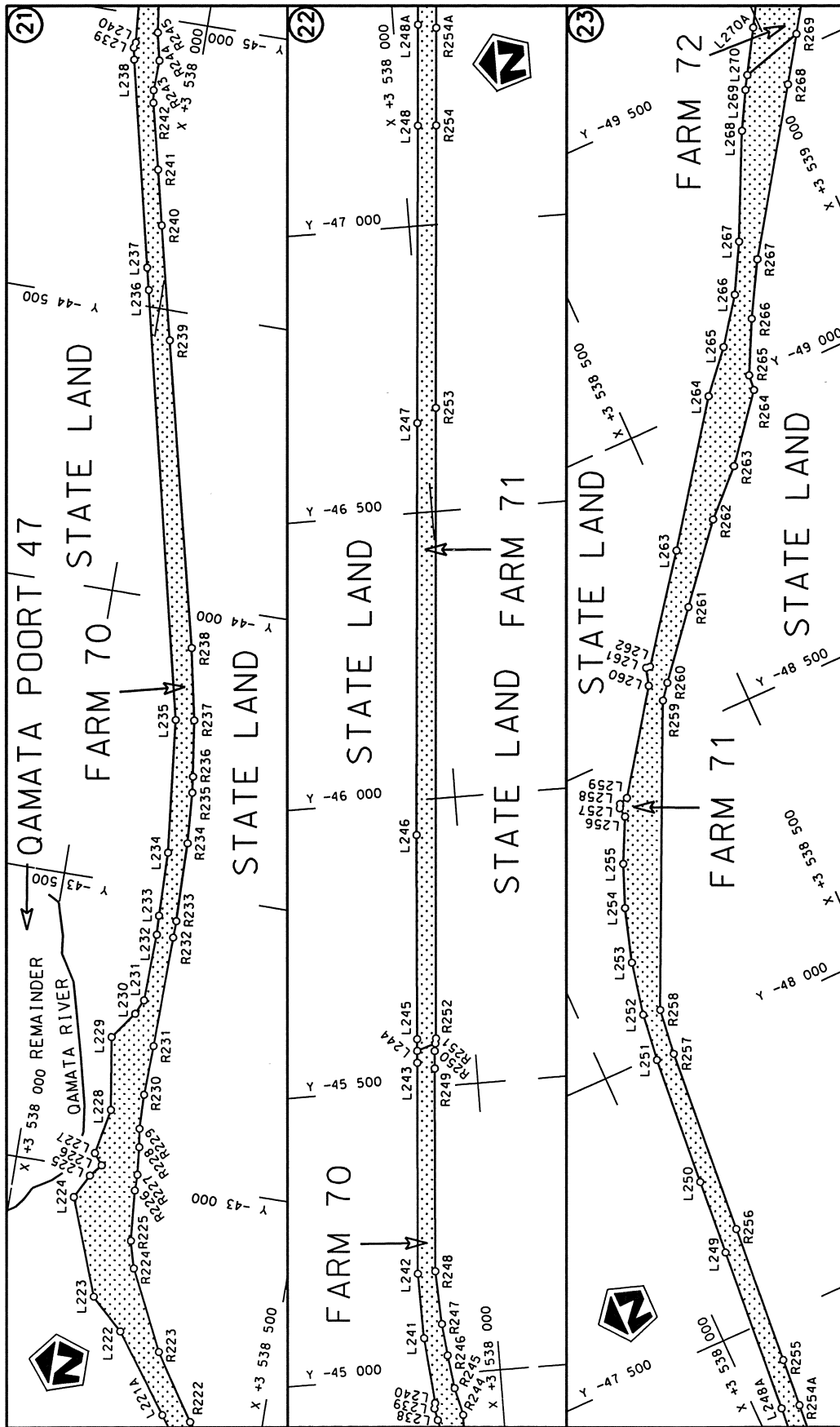
Die Suid Afrikaanse Nasionale Padagentskap Beperk The South African National Roads Agency Limited	Die figuur getoon The figure shown	steldie padreserwe voor van 'n gedeelte represents the road reserve of a portion van Nasionale Roete R61 of National Route	Vel Sheet 5 of 17 Plan P785/10
--	---------------------------------------	---	-----------------------------------

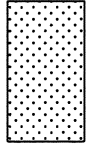


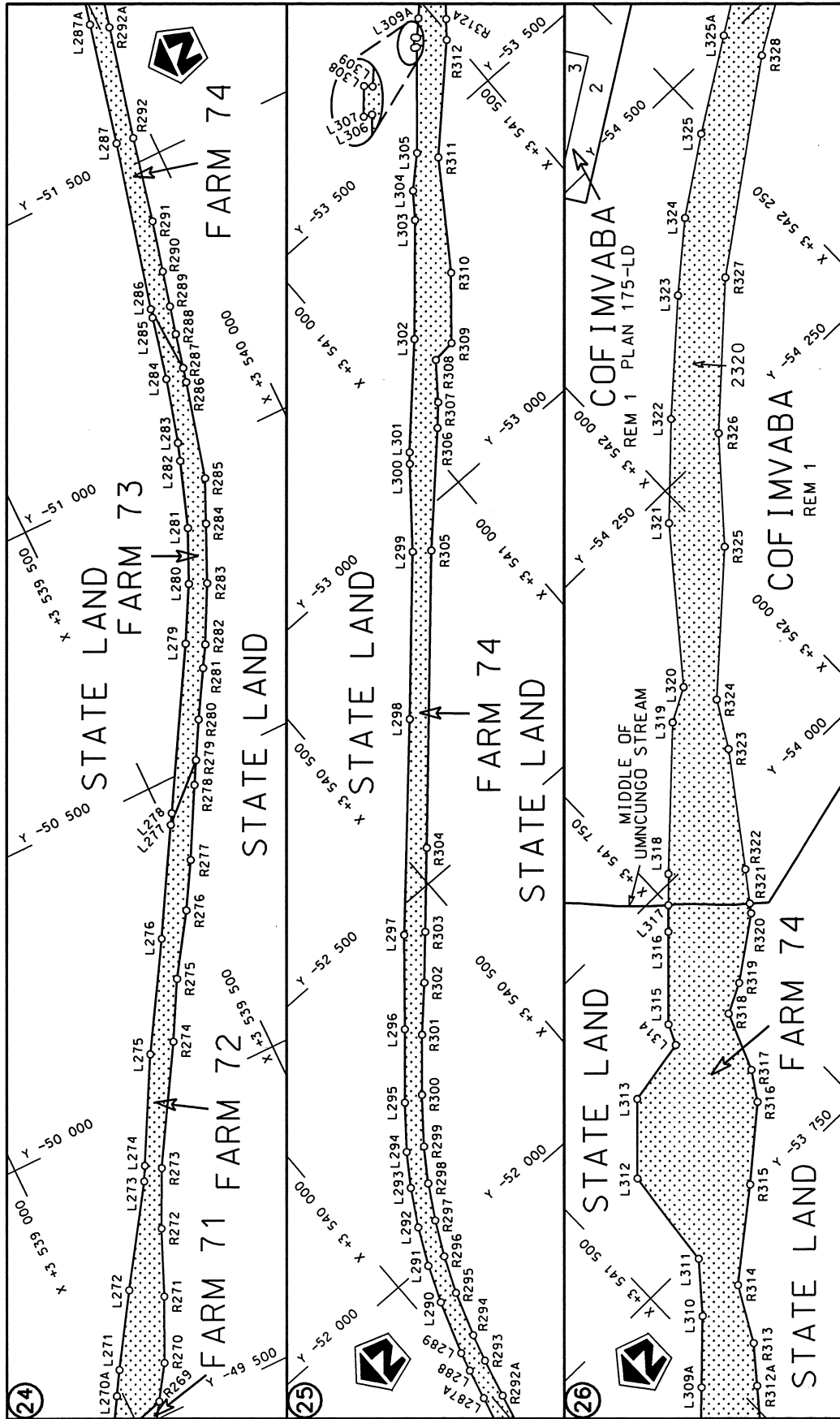
<p>Die Suid Afrikaanse Nasionale Padagentskap Beperk The South African National Roads Agency Limited</p>	<p>Die figuur getoon The figure shown</p>  <p>steldie padreserwe voor van 'n gedeelte represents the road reserve of a portion van Nasionale Roete R61 Sektie of National Route R61 Section</p>	<p>Vel Sheet 6 of 17 Plan P785/10</p>
--	--	---



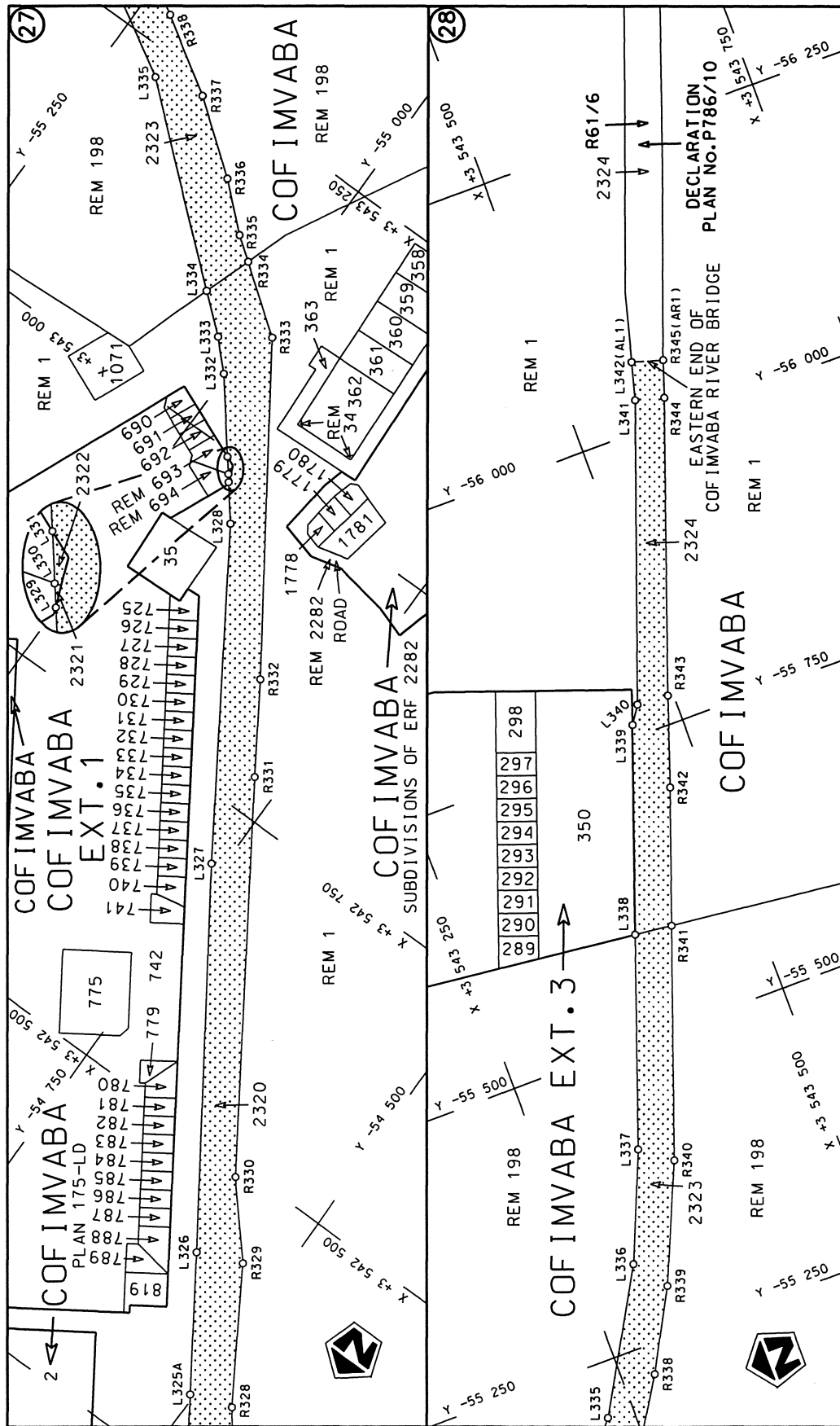
<p>Die Suid Afrikaanse Nasionale Padagentskap Beperk The South African National Roads Agency Limited</p>	<p>Die figuur getoon The figure shown</p> 	<p>steldie padreserwe voor van 'n gedeelte represents the road reserve of a portion van Nasionale Roete R61 Sektie of National Route R61 Section</p>	<p>Vel Sheet 7 of 17 Plan P785/10</p>
--	---	--	---



<p>Die Suid Afrikaanse Nasionale Padagentskap Beperk The South African National Roads Agency Limited</p>	<p>Die figuur getoon The figure shown</p> 	<p>steldie padreserwe voor van 'n gedeelte represents the road reserve of a portion van Nasionale Roete R61 of National Route R61</p> <p>Seksie Section</p> <p>5</p>	<p>Vel Sheet</p> <p>8 of 17</p> <p>Plan P785/10</p>
--	---	--	---



<p>Die Suid Afrikaanse Nasionale Padagentskap Bepoerk The South African National Roads Agency Limited</p>	<p>Die figuur getoon The figure shown</p>	<p>steldie padreserwe voor van 'n gedeelte represents the road reserve of a portion van Nasionale Roete R61 Seksie 5 of National Route R61 Section 5</p>	<p>Vel Sheet 9 of 17 Plan P785/10</p>
---	---	--	---



<p>Die Suid Afrikaanse Nasionale Padagentskap Beperk The South African National Roads Agency Limited</p>	<p>Die figuur getoon The figure shown</p>	<p>stel die padreserwe voor van 'n gedeelte represents the road reserve of a portion van Nasionale Roete R61 Seksie 5 Section</p>	<p>Vel Sheet 10 of 17 Plan P785/10</p>
--	---	---	--

PADRESERWE KOÖRDINATE / ROAD RESERVE CO-ORDINATES					
LINKERKANT/LEFT HAND SIDE			REGTERKANT/RIGHT HAND SIDE		
	Y	X	WG 27°	Y	X
L1	- 245.650	3 542 132.030	R1	- 231.180	3 542 085.760
L2	- 238.930	3 542 136.610	R2	- 103.420	3 542 237.430
L3	- 123.350	3 542 259.770	R3	- 79.570	3 542 271.750
L4	- 100.110	3 542 294.790	R4	- 63.140	3 542 310.670
L5	- 89.020	3 542 335.480	R5	- 57.510	3 542 352.070
L6	- 90.330	3 542 377.350	R6	- 62.400	3 542 393.810
L7	- 104.880	3 542 416.770	R7	- 77.570	3 542 432.830
L8	- 127.890	3 542 451.750	R8	- 99.520	3 542 468.670
L9	- 157.790	3 542 481.350	R9	- 127.930	3 542 499.530
L10	- 205.030	3 542 511.220	R10	- 160.700	3 542 525.570
L11	- 256.900	3 542 532.110	R11	- 194.500	3 542 544.570
L12	- 312.030	3 542 540.710	R12	- 233.000	3 542 561.340
L13	- 373.440	3 542 540.710	R13	- 287.260	3 542 575.560
L14	- 429.120	3 542 541.200	R14	- 342.790	3 542 582.740
L15	- 717.620	3 542 539.040	R15	- 387.420	3 542 585.420
L16	- 796.130	3 542 530.830	R16	- 443.620	3 542 583.880
L17	- 995.910	3 542 529.750	R17	- 796.170	3 542 569.140
L18	- 6 563.130	3 542 338.890	R18	- 1 323.950	3 542 548.270
L19	- 6 565.700	3 542 326.000	R19	- 1 829.830	3 542 530.960
L20	- 6 583.150	3 542 324.520	R20	- 2 434.290	3 542 510.010
L21	- 6 593.030	3 542 337.870	R21	- 2 638.050	3 542 502.930
L22	- 6 800.950	3 542 330.740	R22	- 3 097.710	3 542 487.560
L23	- 6 825.940	3 542 330.080	R23	- 3 557.660	3 542 471.830
L24	- 6 839.050	3 542 329.420	R24	- 3 862.780	3 542 461.140
L25	- 6 846.880	3 542 328.910	R25	- 4 131.310	3 542 451.760
L26	- 7 122.550	3 542 319.320	R26	- 4 495.650	3 542 439.530
L27	- 7 132.500	3 542 309.950	R27	- 4 740.860	3 542 431.170
L28	- 7 137.000	3 542 309.820	R28	- 5 095.640	3 542 419.000
L29	- 7 147.040	3 542 318.420	R29	- 5 446.060	3 542 406.880
L30	- 7 346.110	3 542 311.970	R30	- 5 762.210	3 542 396.060
L31	- 7 695.580	3 542 299.950	R31	- 5 856.020	3 542 392.850
L32	- 7 696.800	3 542 289.760	R32	- 6 235.510	3 542 379.900
L33	- 7 714.180	3 542 290.590	R33	- 6 570.880	3 542 368.550
L34	- 7 725.810	3 542 298.960	R34	- 6 585.410	3 542 376.710
L35	- 8 071.130	3 542 287.240	R35	- 6 594.410	3 542 376.500
L36	- 8 259.930	3 542 281.710	R36	- 6 599.240	3 542 367.540
L37	- 8 355.570	3 542 282.550	R37	- 6 801.670	3 542 360.630
L38	- 8 455.400	3 542 290.400	R38	- 6 826.900	3 542 359.810
L39	- 8 528.910	3 542 298.600	R39	- 6 843.320	3 542 359.220
L40	- 8 793.430	3 542 339.680	R40	- 6 847.010	3 542 359.080
L41	- 8 921.350	3 542 359.620	R41	- 7 133.170	3 542 349.220
L42	- 9 118.950	3 542 390.660	R42	- 7 137.810	3 542 349.020
L43	- 9 186.900	3 542 401.410	R43	- 7 354.020	3 542 341.650
L44	- 9 621.840	3 542 469.470	R44	- 7 692.150	3 542 330.370
L45	- 10 057.670	3 542 537.610	R45	- 7 692.500	3 542 332.140
L46	- 10 488.800	3 542 605.440	R46	- 7 720.600	3 542 331.150
L47	- 10 615.200	3 542 623.700	R47	- 7 721.490	3 542 329.500
L48	- 10 705.070	3 542 628.930	R48	- 8 072.170	3 542 317.380
L49	- 10 776.510	3 542 626.780	R49	- 8 173.480	3 542 313.930
L50	- 10 870.740	3 542 616.060	R50	- 8 261.510	3 542 311.840
L51	- 10 943.610	3 542 600.250	R51	- 8 332.590	3 542 312.930

Vel	11	Van	17	P785/10
Sheet		of		

PADRESERWE KOÖRDINATE / ROAD RESERVE CO-ORDINATES					
LINKERKANT/LEFT HAND SIDE			REGTERKANT/RIGHT HAND SIDE		
	Y	X	WG 27°	Y	X
L52	- 10 954.150	3 542 590.300		R52	- 8 452.330 3 542 320.460
L53	- 11 035.200	3 542 562.730		R53	- 8 554.610 3 542 332.510
L54	- 11 046.580	3 542 547.770		R54	- 8 916.670 3 542 389.450
L55	- 11 124.160	3 542 515.140		R55	- 8 948.720 3 542 394.480
L56	- 11 153.040	3 542 502.960		R56	- 8 944.160 3 542 426.160
L57	- 11 195.010	3 542 503.310		R57	- 9 017.690 3 542 437.620
L58	- 11 281.860	3 542 464.280		R58	- 9 106.150 3 542 451.530
L59	- 11 312.200	3 542 446.300		R59	- 9 110.620 3 542 419.910
L60	- 11 326.130	3 542 439.400		R60	- 9 114.240 3 542 420.480
L61	- 11 358.840	3 542 423.200		R61	- 9 419.310 3 542 468.060
L62	- 11 374.330	3 542 399.590		R62	- 9 853.840 3 542 535.950
L63	- 11 453.110	3 542 366.110		R63	- 10 151.170 3 542 582.780
L64	- 11 471.910	3 542 369.710		R64	- 10 483.170 3 542 634.880
L65	- 11 538.360	3 542 348.780		R65	- 10 612.270 3 542 655.090
L66	- 11 549.620	3 542 338.710		R66	- 10 685.640 3 542 661.020
L67	- 11 643.120	3 542 294.730		R67	- 10 745.920 3 542 660.230
L68	- 11 699.300	3 542 272.150		R68	- 10 787.030 3 542 657.690
L69	- 11 824.210	3 542 239.580		R69	- 10 866.180 3 542 647.850
L70	- 11 879.180	3 542 231.000		R70	- 11 013.940 3 542 618.030
L71	- 11 915.010	3 542 232.850		R71	- 11 090.090 3 542 595.840
L72	- 12 047.480	3 542 222.990		R72	- 11 116.120 3 542 583.290
L73	- 12 130.280	3 542 215.560		R73	- 11 163.570 3 542 555.230
L74	- 12 235.490	3 542 224.520		R74	- 11 319.610 3 542 491.890
L75	- 12 282.050	3 542 225.870		R75	- 11 339.150 3 542 488.130
L76	- 12 403.830	3 542 241.250		R76	- 11 512.250 3 542 408.580
L77	- 12 500.350	3 542 254.960		R77	- 11 616.520 3 542 351.200
L78	- 12 513.570	3 542 239.180		R78	- 11 701.670 3 542 320.960
L79	- 12 534.340	3 542 257.670		R79	- 11 785.620 3 542 299.770
L80	- 12 667.440	3 542 259.390		R80	- 11 804.080 3 542 310.550
L81	- 12 690.790	3 542 259.690		R81	- 11 873.110 3 542 275.700
L82	- 12 817.370	3 542 269.280		R82	- 11 913.870 3 542 267.070
L83	- 12 938.370	3 542 276.170		R83	- 11 972.120 3 542 260.650
L84	- 12 961.720	3 542 281.530		R84	- 12 021.880 3 542 256.610
L85	- 12 969.480	3 542 287.300		R85	- 12 070.450 3 542 245.920
L86	- 12 983.820	3 542 293.420		R86	- 12 591.210 3 542 297.470
L87	- 12 998.870	3 542 285.890		R87	- 12 645.840 3 542 303.620
L88	- 13 069.220	3 542 293.060		R88	- 12 702.260 3 542 309.980
L89	- 13 164.670	3 542 297.730		R89	- 12 792.780 3 542 314.530
L90	- 13 476.070	3 542 329.180		R90	- 12 931.920 3 542 332.340
L91	- 13 675.400	3 542 344.430		R91	- 12 936.250 3 542 329.510
L92	- 14 158.640	3 542 381.340		R92	- 12 938.920 3 542 327.850
L93	- 14 242.680	3 542 387.930		R93	- 12 959.790 3 542 322.780
L94	- 14 251.480	3 542 388.380		R94	- 12 995.070 3 542 324.750
L95	- 14 482.360	3 542 406.010		R95	- 13 122.930 3 542 337.810
L96	- 14 785.110	3 542 428.970		R96	- 13 270.180 3 542 349.350
L97	- 14 912.280	3 542 440.470		R97	- 13 473.190 3 542 359.130
L98	- 15 080.710	3 542 467.550		R98	- 14 179.160 3 542 413.100
L99	- 15 208.120	3 542 498.240		R99	- 14 580.110 3 542 443.470
L100	- 15 511.860	3 542 601.420		R100	- 14 909.170 3 542 470.350
L101	- 16 027.670	3 542 821.190		R101	- 15 076.420 3 542 497.510
L102	- 16 204.790	3 542 890.980		R102	- 15 200.890 3 542 527.420

Vel	12	Van	17	P785/10
Sheet		of		

PADRESERWE KOÖRDINATE / ROAD RESERVE CO-ORDINATES					
LINKERKANT/LEFT HAND SIDE			REGTERKANT/RIGHT HAND SIDE		
	Y	X	WG 27°	Y	X
L103	- 16 332.740	3 542 943.560	R103	- 15 499.330	3 542 634.110
L104	- 16 609.730	3 543 056.950	R104	- 15 880.000	3 542 790.110
L105	- 16 942.520	3 543 193.700	R105	- 16 016.150	3 542 846.000
L106	- 17 308.570	3 543 343.650	R106	- 16 238.830	3 542 937.420
L107	- 17 667.740	3 543 490.770	R107	- 16 235.390	3 542 946.660
L108	- 17 792.860	3 543 542.170	R108	- 16 254.690	3 542 954.830
L109	- 18 098.730	3 543 667.510	R109	- 16 258.600	3 542 945.530
L110	- 18 131.550	3 543 680.650	R110	- 16 317.680	3 542 969.840
L111	- 18 518.120	3 543 839.370	R111	- 16 490.610	3 543 040.990
L112	- 18 996.260	3 544 035.550	R112	- 16 524.570	3 543 054.360
L113	- 19 350.890	3 544 181.000	R113	- 17 301.820	3 543 373.000
L114	- 19 763.670	3 544 350.160	R114	- 17 781.110	3 543 569.830
L115	- 19 865.170	3 544 382.010	R115	- 18 110.960	3 543 704.920
L116	- 19 984.280	3 544 410.770	R116	- 18 510.730	3 543 868.540
L117	- 20 083.550	3 544 426.560	R117	- 18 951.670	3 544 049.530
L118	- 20 182.750	3 544 435.470	R118	- 19 339.760	3 544 208.890
L119	- 20 281.650	3 544 437.710	R119	- 19 694.280	3 544 354.260
L120	- 20 561.560	3 544 439.570	R120	- 19 801.320	3 544 393.560
L121	- 20 701.370	3 544 440.490	R121	- 19 883.340	3 544 418.200
L122	- 21 101.150	3 544 443.000	R122	- 19 961.360	3 544 436.550
L123	- 21 909.810	3 544 446.360	R123	- 20 080.310	3 544 456.470
L124	- 22 540.110	3 544 449.340	R124	- 20 180.720	3 544 467.090
L125	- 22 658.180	3 544 449.890	R125	- 20 281.770	3 544 469.240
L126	- 22 901.200	3 544 451.040	R126	- 20 700.410	3 544 471.110
L127	- 23 179.310	3 544 452.450	R127	- 21 638.330	3 544 475.180
L128	- 23 185.810	3 544 431.610	R128	- 21 903.450	3 544 476.410
L129	- 23 203.020	3 544 432.490	R129	- 22 658.750	3 544 478.720
L130	- 23 203.670	3 544 452.650	R130	- 22 901.470	3 544 481.210
L131	- 23 539.520	3 544 453.640	R131	- 23 519.890	3 544 484.170
L132	- 23 587.210	3 544 454.650	R132	- 23 568.490	3 544 484.870
L133	- 23 654.350	3 544 454.940	R133	- 23 627.840	3 544 484.760
L134	- 23 862.520	3 544 455.790	R134	- 23 646.530	3 544 484.080
L135	- 24 105.400	3 544 456.980	R135	- 23 861.820	3 544 485.560
L136	- 24 888.310	3 544 460.530	R136	- 24 092.100	3 544 486.940
L137	- 24 967.920	3 544 460.970	R137	- 24 956.320	3 544 490.950
L138	- 25 045.730	3 544 461.380	R138	- 25 043.020	3 544 491.280
L139	- 25 207.410	3 544 455.250	R139	- 25 203.180	3 544 500.600
L140	- 25 432.340	3 544 463.220	R140	- 25 373.250	3 544 496.090
L141	- 25 740.990	3 544 464.790	R141	- 25 436.290	3 544 493.140
L142	- 26 245.240	3 544 466.650	R142	- 25 742.750	3 544 494.410
L143	- 26 252.380	3 544 452.460	R143	- 26 067.120	3 544 496.170
L144	- 26 273.340	3 544 454.070	R144	- 26 349.470	3 544 497.660
L145	- 26 282.030	3 544 467.220	R145	- 26 499.910	3 544 498.310
L146	- 26 348.710	3 544 467.540	R146	- 26 700.030	3 544 504.180
L147	- 26 500.740	3 544 468.160	R147	- 26 857.340	3 544 505.470
L148	- 26 699.190	3 544 465.500	R148	- 26 885.130	3 544 500.010
L149	- 26 821.760	3 544 465.800	R149	- 27 060.750	3 544 501.020
L150	- 26 884.250	3 544 470.070	R150	- 27 101.800	3 544 501.170
L151	- 27 291.260	3 544 471.960	R151	- 27 218.990	3 544 501.690
L152	- 27 567.330	3 544 473.250	R152	- 27 566.940	3 544 503.230
L153	- 27 680.650	3 544 470.520	R153	- 27 682.150	3 544 500.510

Vel 13 Van 17
Sheet of

P785/10

PADRESERWE KOÖRDINATE / ROAD RESERVE CO-ORDINATES							
LINKERKANT/LEFT HAND SIDE			REGTERKANT/RIGHT HAND SIDE				
	Y	X	WG 27°	Y	X		
L154	- 27 792.830	3 544 461.300		R154	- 27 803.840	3 544 490.540	
L155	- 27 924.550	3 544 442.570		R155	- 27 908.540	3 544 475.860	
L156	- 27 970.550	3 544 433.920		R156	- 28 001.100	3 544 458.020	
L157	- 28 011.530	3 544 425.190		R157	- 28 210.580	3 544 411.640	
L158	- 28 185.950	3 544 386.440		R158	- 28 314.370	3 544 393.990	
L159	- 28 232.260	3 544 372.580		R159	- 28 339.850	3 544 385.730	
L160	- 28 296.850	3 544 359.170		R160	- 28 469.800	3 544 355.620	
L161	- 28 463.130	3 544 323.510		R161	- 28 645.900	3 544 315.090	
L162	- 28 639.110	3 544 285.890		R162	- 28 930.160	3 544 252.120	
L163	- 28 918.530	3 544 224.030		R163	- 29 173.060	3 544 197.960	
L164	- 29 164.030	3 544 169.540		R164	- 29 422.920	3 544 142.690	
L165	- 29 309.690	3 544 137.520		R165	- 30 346.720	3 543 937.880	
L166	- 31 527.850	3 543 645.690		R166	- 30 368.950	3 543 932.800	
L167	- 32 072.080	3 543 524.970		R167	- 31 125.810	3 543 765.460	
L168	- 32 358.880	3 543 461.400		R168	- 31 182.770	3 543 782.980	
L169	- 32 550.260	3 543 413.210		R169	- 31 535.370	3 543 704.980	
L170	- 32 576.640	3 543 401.150		R170	- 32 153.810	3 543 568.170	
L171	- 32 631.550	3 543 390.350		R171	- 32 222.000	3 543 522.590	
L172	- 33 126.670	3 543 292.920		R172	- 32 368.970	3 543 490.560	
L173	- 33 342.540	3 543 236.910		R173	- 32 373.420	3 543 491.720	
L174	- 33 417.000	3 543 224.080		R174	- 32 433.300	3 543 530.640	
L175	- 33 456.290	3 543 227.160		R175	- 32 464.620	3 543 539.260	
L176	- 33 632.670	3 543 183.560		R176	- 32 507.960	3 543 539.640	
L177	- 33 814.040	3 543 138.660		R177	- 32 631.300	3 543 431.200	
L178	- 33 876.980	3 543 123.110		R178	- 32 647.790	3 543 433.610	
L179	- 33 898.590	3 543 119.180		R179	- 32 700.860	3 543 421.040	
L180	- 34 308.260	3 543 028.340		R180	- 33 100.610	3 543 326.350	
L181	- 34 634.120	3 542 956.270		R181	- 33 109.420	3 543 325.040	
L182	- 34 680.080	3 542 945.890		R182	- 33 137.570	3 543 317.830	
L183	- 35 841.680	3 542 686.240		R183	- 33 417.990	3 543 261.890	
L184	- 36 003.280	3 542 633.760		R184	- 33 447.160	3 543 252.610	
L185	- 36 143.950	3 542 576.150		R185	- 33 486.660	3 543 250.040	
L186	- 36 380.360	3 542 465.960		R186	- 33 545.920	3 543 231.540	
L187	- 36 387.790	3 542 445.570		R187	- 33 610.670	3 543 216.480	
L188	- 36 429.220	3 542 449.850		R188	- 33 660.940	3 543 205.240	
L189	- 37 300.990	3 542 031.100		R189	- 33 906.900	3 543 150.260	
L190	- 37 855.210	3 541 772.020		R190	- 33 929.520	3 543 145.240	
L191	- 39 156.810	3 541 168.160		R191	- 34 020.780	3 543 130.520	
L192	- 40 059.260	3 540 747.860		R192	- 34 640.040	3 542 986.920	
L193	- 40 183.390	3 540 687.430		R193	- 34 685.810	3 542 977.080	
L194	- 40 379.850	3 540 581.510		R194	- 34 956.320	3 542 916.780	
L195	- 40 452.180	3 540 561.900		R195	- 35 917.690	3 542 696.600	
L196	- 40 725.660	3 540 434.360		R196	- 36 014.510	3 542 663.670	
L197	- 40 827.070	3 540 379.390		R197	- 36 093.610	3 542 632.700	
L198	- 40 909.460	3 540 324.960		R198	- 36 157.610	3 542 604.620	
L199	- 40 982.870	3 540 266.900		R199	- 36 412.590	3 542 485.360	
L200	- 41 021.250	3 540 233.440		R200	- 36 452.520	3 542 465.360	
L201	- 41 098.350	3 540 153.690		R201	- 38 531.590	3 541 494.910	
L202	- 41 143.660	3 540 100.440		R202	- 40 744.950	3 540 457.160	
L203	- 41 152.700	3 540 088.430		R203	- 40 841.370	3 540 406.430	
L204	- 41 268.050	3 539 945.870		R204	- 40 972.740	3 540 314.080	
			Vel	14	Van	17	P785/10
			Sheet		of		

PADRESERWE KOÖRDINATE / ROAD RESERVE CO-ORDINATES					
LINKERKANT/LEFT HAND SIDE			REGTERKANT/RIGHT HAND SIDE		
	Y	X	WG 27°	Y	X
L205	- 41 495.130	3 539 665.230		R205	- 41 084.270 3 540 212.440
L206	- 41 603.990	3 539 530.130		R206	- 41 121.580 3 540 174.480
L207	- 41 660.460	3 539 474.650		R207	- 41 161.270 3 540 127.950
L208	- 41 667.420	3 539 467.540		R208	- 41 301.580 3 539 954.580
L209	- 41 669.560	3 539 391.450		R209	- 41 519.990 3 539 684.700
L210	- 41 727.680	3 539 331.210		R210	- 41 544.340 3 539 654.490
L211	- 41 762.550	3 539 322.580		R211	- 41 579.020 3 539 602.490
L212	- 41 864.060	3 539 212.420		R212	- 41 684.560 3 539 481.500
L213	- 41 963.540	3 539 083.810		R213	- 41 734.190 3 539 427.110
L214	- 42 018.490	3 539 018.530		R214	- 41 770.950 3 539 374.780
L215	- 42 014.390	3 538 956.500		R215	- 41 950.790 3 539 151.470
L216	- 42 074.400	3 538 856.470		R216	- 41 985.310 3 539 109.850
L217	- 42 119.320	3 538 796.050		R217	- 42 128.340 3 538 941.270
L218	- 42 215.170	3 538 779.200		R218	- 42 202.050 3 538 848.310
L219	- 42 477.200	3 538 450.830		R219	- 42 305.630 3 538 714.850
L220	- 42 493.850	3 538 426.270		R220	- 42 342.040 3 538 666.200
L221	- 42 551.290	3 538 360.480		R221	- 42 550.880 3 538 414.130
L222	- 42 729.360	3 538 228.110		R222	- 42 594.030 3 538 375.620
L223	- 42 781.540	3 538 172.660		R223	- 42 705.410 3 538 301.430
L224	- 42 946.760	3 538 109.940		R224	- 42 841.580 3 538 233.310
L225	- 42 987.980	3 538 131.240		R225	- 42 888.300 3 538 220.250
L226	- 43 008.840	3 538 148.380		R226	- 42 975.500 3 538 212.620
L227	- 43 027.990	3 538 133.400		R227	- 43 003.150 3 538 212.690
L228	- 43 106.580	3 538 148.160		R228	- 43 050.870 3 538 208.020
L229	- 43 231.490	3 538 128.430		R229	- 43 082.590 3 538 203.030
L230	- 43 278.360	3 538 162.480		R230	- 43 142.020 3 538 201.280
L231	- 43 303.810	3 538 174.010		R231	- 43 228.360 3 538 204.010
L232	- 43 420.410	3 538 177.470		R232	- 43 420.410 3 538 207.120
L233	- 43 453.760	3 538 175.830		R233	- 43 449.560 3 538 207.830
L234	- 43 564.890	3 538 173.620		R234	- 43 586.520 3 538 204.350
L235	- 43 795.240	3 538 148.330		R235	- 43 674.950 3 538 197.700
L236	- 44 528.690	3 537 975.770		R236	- 43 702.460 3 538 194.150
L237	- 44 566.600	3 537 966.350		R237	- 43 799.710 3 538 179.870
L238	- 44 921.160	3 537 883.080		R238	- 43 923.650 3 538 154.590
L239	- 44 941.420	3 537 878.720		R239	- 44 447.970 3 538 027.570
L240	- 44 951.240	3 537 880.910		R240	- 44 643.420 3 537 979.850
L241	- 45 065.470	3 537 871.210		R241	- 44 738.450 3 537 957.090
L242	- 45 178.240	3 537 869.490		R242	- 44 852.290 3 537 929.440
L243	- 45 543.760	3 537 897.880		R243	- 44 874.090 3 537 926.080
L244	- 45 564.230	3 537 899.450		R244	- 44 926.670 3 537 927.690
L245	- 45 584.610	3 537 901.020		R245	- 44 974.530 3 537 916.560
L246	- 45 939.240	3 537 928.540		R246	- 45 032.150 3 537 909.080
L247	- 46 656.940	3 537 987.270		R247	- 45 087.730 3 537 903.580
L248	- 47 174.810	3 538 029.360		R248	- 45 180.140 3 537 899.580
L249	- 47 638.560	3 538 066.950		R249	- 45 531.390 3 537 926.940
L250	- 47 768.350	3 538 077.520		R250	- 45 561.950 3 537 929.270
L251	- 47 992.660	3 538 095.670		R251	- 45 574.610 3 537 931.630
L252	- 48 074.410	3 538 105.660		R252	- 45 583.520 3 537 933.290
L253	- 48 164.930	3 538 124.770		R253	- 46 680.980 3 538 020.980
L254	- 48 256.690	3 538 153.050		R254	- 47 172.970 3 538 060.640
L255	- 48 328.270	3 538 182.000		R255	- 47 426.610 3 538 081.090

Vel	15	Van	17	P785/10
Sheet		of		

PADRESERWE KOÖRDINATE / ROAD RESERVE CO-ORDINATES							
LINKERKANT/LEFT HAND SIDE			REGTERKANT/RIGHT HAND SIDE				
	Y	X	WG 27°	Y	X		
L256	- 48 402.060	3 538 218.720		R256	- 47 667.960	3 538 100.810	
L257	- 48 419.060	3 538 216.410		R257	- 47 990.220	3 538 126.950	
L258	- 48 425.880	3 538 219.830		R258	- 48 069.390	3 538 136.730	
L259	- 48 430.300	3 538 235.040		R259	- 48 558.960	3 538 362.920	
L260	- 48 592.880	3 538 350.430		R260	- 48 584.040	3 538 382.860	
L261	- 48 623.280	3 538 359.230		R261	- 48 689.580	3 538 470.710	
L262	- 48 622.340	3 538 366.370		R262	- 48 811.680	3 538 572.700	
L263	- 48 788.230	3 538 492.410		R263	- 48 881.920	3 538 644.240	
L264	- 49 011.700	3 538 654.310		R264	- 48 989.250	3 538 730.670	
L265	- 49 079.550	3 538 713.350		R265	- 49 016.110	3 538 733.460	
L266	- 49 154.830	3 538 768.560		R266	- 49 104.430	3 538 778.190	
L267	- 49 236.300	3 538 813.360		R267	- 49 194.970	3 538 829.720	
L268	- 49 410.690	3 538 897.390		R268	- 49 451.810	3 539 003.440	
L269	- 49 473.380	3 538 932.290		R269	- 49 526.200	3 539 052.930	
L270	- 49 495.770	3 538 945.870		R270	- 49 583.030	3 539 090.740	
L271	- 49 606.710	3 539 013.260		R271	- 49 688.080	3 539 140.910	
L272	- 49 725.060	3 539 089.190		R272	- 49 797.230	3 539 187.810	
L273	- 49 884.770	3 539 195.590		R273	- 49 891.990	3 539 233.890	
L274	- 49 908.830	3 539 208.460		R274	- 50 082.020	3 539 348.050	
L275	- 50 080.070	3 539 301.680		R275	- 50 178.330	3 539 401.400	
L276	- 50 253.290	3 539 407.280		R276	- 50 279.500	3 539 467.600	
L277	- 50 426.060	3 539 508.260		R277	- 50 355.770	3 539 512.580	
L278	- 50 443.870	3 539 518.690		R278	- 50 471.670	3 539 575.320	
L279	- 50 701.360	3 539 668.830		R279	- 50 509.600	3 539 596.480	
L280	- 50 793.570	3 539 719.230		R280	- 50 571.840	3 539 631.280	
L281	- 50 882.990	3 539 760.200		R281	- 50 649.840	3 539 677.400	
L282	- 50 995.110	3 539 799.570		R282	- 50 685.630	3 539 698.770	
L283	- 51 025.410	3 539 809.800		R283	- 50 781.280	3 539 748.140	
L284	- 51 135.230	3 539 839.890		R284	- 50 876.420	3 539 791.640	
L285	- 51 243.270	3 539 864.320		R285	- 50 949.180	3 539 824.600	
L286	- 51 258.100	3 539 867.960		R286	- 51 115.680	3 539 868.690	
L287	- 51 546.730	3 539 938.920		R287	- 51 140.260	3 539 874.690	
L288	- 51 807.800	3 539 999.450		R288	- 51 199.430	3 539 889.080	
L289	- 51 841.030	3 540 007.970		R289	- 51 247.490	3 539 900.790	
L290	- 51 932.020	3 540 038.740		R290	- 51 308.300	3 539 915.730	
L291	- 51 994.400	3 540 063.990		R291	- 51 395.900	3 539 937.350	
L292	- 52 056.700	3 540 094.690		R292	- 51 542.490	3 539 969.600	
L293	- 52 117.390	3 540 129.780		R293	- 51 803.150	3 540 031.730	
L294	- 52 169.690	3 540 165.140		R294	- 51 850.850	3 540 044.780	
L295	- 52 236.910	3 540 219.110		R295	- 51 927.120	3 540 069.820	
L296	- 52 334.090	3 540 302.650		R296	- 51 988.950	3 540 095.830	
L297	- 52 459.740	3 540 409.580		R297	- 52 046.780	3 540 124.940	
L298	- 52 739.880	3 540 663.910		R298	- 52 103.620	3 540 157.980	
L299	- 52 959.040	3 540 859.390		R299	- 52 157.270	3 540 194.540	
L300	- 53 079.640	3 540 956.450		R300	- 52 227.600	3 540 250.780	
L301	- 53 095.250	3 540 969.510		R301	- 52 307.140	3 540 319.390	
L302	- 53 240.440	3 541 105.860		R302	- 52 373.440	3 540 381.760	
L303	- 53 398.090	3 541 242.750		R303	- 52 439.740	3 540 441.010	
L304	- 53 439.380	3 541 273.580		R304	- 52 549.590	3 540 539.030	
L305	- 53 485.110	3 541 322.130		R305	- 52 939.600	3 540 885.330	
L306	- 53 626.390	3 541 443.270		R306	- 53 095.930	3 541 034.130	
			Vel	16	Van	17	P785/10
			Sheet		of		

PADRESERWE KOÖRDINATE / ROAD RESERVE CO-ORDINATES					
LINKERKANT/LEFT HAND SIDE			REGTERKANT/RIGHT HAND SIDE		
	Y	X	WG 27°	Y	X
L307	- 53 628.630	3 541 438.750	R307	- 53 129.400	3 541 064.520
L308	- 53 642.100	3 541 450.600	R308	- 53 188.550	3 541 109.990
L309	- 53 638.660	3 541 454.200	R309	- 53 193.120	3 541 150.070
L310	- 53 707.180	3 541 522.150	R310	- 53 287.050	3 541 230.080
L311	- 53 745.630	3 541 554.590	R311	- 53 455.150	3 541 345.080
L312	- 53 833.580	3 541 564.390	R312	- 53 602.240	3 541 490.720
L313	- 53 883.610	3 541 612.390	R313	- 53 659.470	3 541 537.710
L314	- 53 893.780	3 541 669.660	R314	- 53 705.450	3 541 563.080
L315	- 53 911.190	3 541 677.590	R315	- 53 761.400	3 541 631.770
L316	- 53 969.570	3 541 733.750	R316	- 53 808.860	3 541 686.340
L317	- 53 986.370	3 541 749.930	R317	- 53 832.620	3 541 701.920
L318	- 54 006.060	3 541 768.900	R318	- 53 881.790	3 541 721.700
L319	- 54 099.130	3 541 863.730	R319	- 53 894.720	3 541 747.000
L320	-54 114.760	3 541 892.040	R320	- 53 931.400	3 541 796.820
L321	- 54 227.290	3 541 982.790	R321	- 53 938.360	3 541 801.980
L322	- 54 292.240	3 542 047.580	R322	- 53 962.610	3 541 819.960
L323	- 54 366.200	3 542 127.170	R323	- 54 048.680	3 541 882.430
L324	- 54 410.940	3 542 178.640	R324	- 54 087.090	3 541 905.090
L325	- 54 454.510	3 542 240.030	R325	- 54 178.990	3 542 003.120
L326	- 54 571.420	3 542 417.360	R326	- 54 254.590	3 542 068.630
L327	- 54 759.430	3 542 698.860	R327	- 54 349.040	3 542 167.600
L328	- 54 920.460	3 542 948.830	R328	- 54 467.600	3 542 325.590
L329	- 54 943.250	3 542 977.400	R329	- 54 533.270	3 542 433.020
L330	- 54 947.620	3 542 982.930	R330	- 54 582.690	3 542 489.920
L331	- 54 957.110	3 542 994.840	R331	- 54 773.300	3 542 781.870
L332	- 55 002.400	3 543 051.700	R332	- 54 819.440	3 542 853.940
L333	- 55 025.510	3 543 074.990	R333	- 54 986.810	3 543 102.150
L334	- 55 056.810	3 543 101.780	R334	- 55 042.860	3 543 143.330
L335	- 55 202.890	3 543 226.760	R335	- 55 062.520	3 543 157.780
L336	- 55 320.480	3 543 294.200	R336	- 55 100.140	3 543 191.500
L337	- 55 412.740	3 543 332.840	R337	- 55 159.940	3 543 237.610
L338	- 55 588.660	3 543 395.440	R338	- 55 224.180	3 543 278.300
L339	- 55 761.020	3 543 457.030	R339	- 55 292.530	3 543 315.790
L340	- 55 776.110	3 543 467.230	R340	- 55 392.800	3 543 359.520
L341	- 56 026.610	3 543 558.060	R341	- 55 584.900	3 543 428.490
L342	- 56 058.920	3 543 566.850	R342	- 55 698.400	3 543 469.240
			R343	- 55 774.200	3 543 495.270
			R344	- 56 019.620	3 543 582.950
			R345	- 56 050.870	3 543 593.530

Vel	17	Van	17	P785/10
Sheet		of		

Printed by and obtainable from the Government Printer, Bosman Street, Private Bag X85, Pretoria, 0001
Publications: Tel: (012) 334-4508, 334-4509, 334-4510
Advertisements: Tel: (012) 334-4673, 334-4674, 334-4504
Subscriptions: Tel: (012) 334-4735, 334-4736, 334-4737
Cape Town Branch: Tel: (021) 465-7531

Gedruk deur en verkrygbaar by die Staatsdrukker, Bosmanstraat, Privaatsak X85, Pretoria, 0001
Publikasies: Tel: (012) 334-4508, 334-4509, 334-4510
Advertensies: Tel: (012) 334-4673, 334-4674, 334-4504
Subskripsies: Tel: (012) 334-4735, 334-4736, 334-4737
Kaapstad-tak: Tel: (021) 465-7531