



# Government Gazette Staatskoerant

REPUBLIC OF SOUTH AFRICA  
REPUBLIEK VAN SUID-AFRIKA

Vol. 570

Pretoria, 13 December 2012  
Desember

No. 35976

*N.B. The Government Printing Works will not be held responsible for the quality of "Hard Copies" or "Electronic Files" submitted for publication purposes*



**AIDS HELPLINE: 0800-0123-22 Prevention is the cure**

**IMPORTANT NOTICE**

The Government Printing Works will not be held responsible for faxed documents not received due to errors on the fax machine or faxes received which are unclear or incomplete. Please be advised that an "OK" slip, received from a fax machine, will not be accepted as proof that documents were received by the GPW for printing. If documents are faxed to the GPW it will be the sender's responsibility to phone and confirm that the documents were received in good order.

Furthermore the Government Printing Works will also not be held responsible for cancellations and amendments which have not been done on original documents received from clients.

**CONTENTS****INHOUD**

<i>No.</i>	<i>Page No.</i>	<i>Gazette No.</i>	<i>No.</i>	<i>Bladsy No.</i>	<i>Koerant No.</i>
<b>GOVERNMENT NOTICE</b>			<b>GOEWERMENTSKENNISGEWING</b>		
<b>Transport, Department of</b>			<b>Vervoer, Departement van</b>		
<i>Government Notice</i>			<i>Goewermentskennisgewing</i>		
1046		South African National Roads Agency Limited and the National Roads Act (7/1998): Declaration amendment of National Road N6 Section 1 .....	3	35976	
			1046		Suid-Afrikaanse Nasionale Padagentskap Beperk en die Nasionale Paaie Wet (7/1998): Verklaring wysiging van Nasionale Pad N6 Seksie 1 .....
				4	35976

---

## GOVERNMENT NOTICE

---

### DEPARTMENT OF TRANSPORT

No. 1046

13 December 2012

## THE SOUTH AFRICAN NATIONAL ROADS AGENCY SOC LIMITED

Registration No: 98/09584/06

### DECLARATION AMENDMENT OF NATIONAL ROAD N6 SECTION 1

AMENDMENT OF DECLARATION NO. 2136 OF 1992

By virtue of Section 40(1)(b) of The South African National Roads Agency Limited and National Roads Act, 1998 (Act No. 7 of 1998) I hereby amend Declaration No. 2136 of 1992, Schedule B paragraph 1, by substituting the portion from East London to Stutterheim with the subjoined sheets 1 to 26 of Plan P588/06.

**(National Road N6 Section 1: East London - Stutterheim)**



\_\_\_\_\_  
MINISTER OF TRANSPORT

## GOEWERMENTSKENNISGEWING

---

---

### DEPARTEMENT VAN VERVOER

No. 1046

13 Desember 2012

## DIE SUID-AFRIKAANSE NASIONALE PADAGENTSKAP MSB BEPERK

Registrasie No: 98/09584/06

### VERKLARING WYSIGING VAN NASIONALE PAD N6 SEKSIE 1

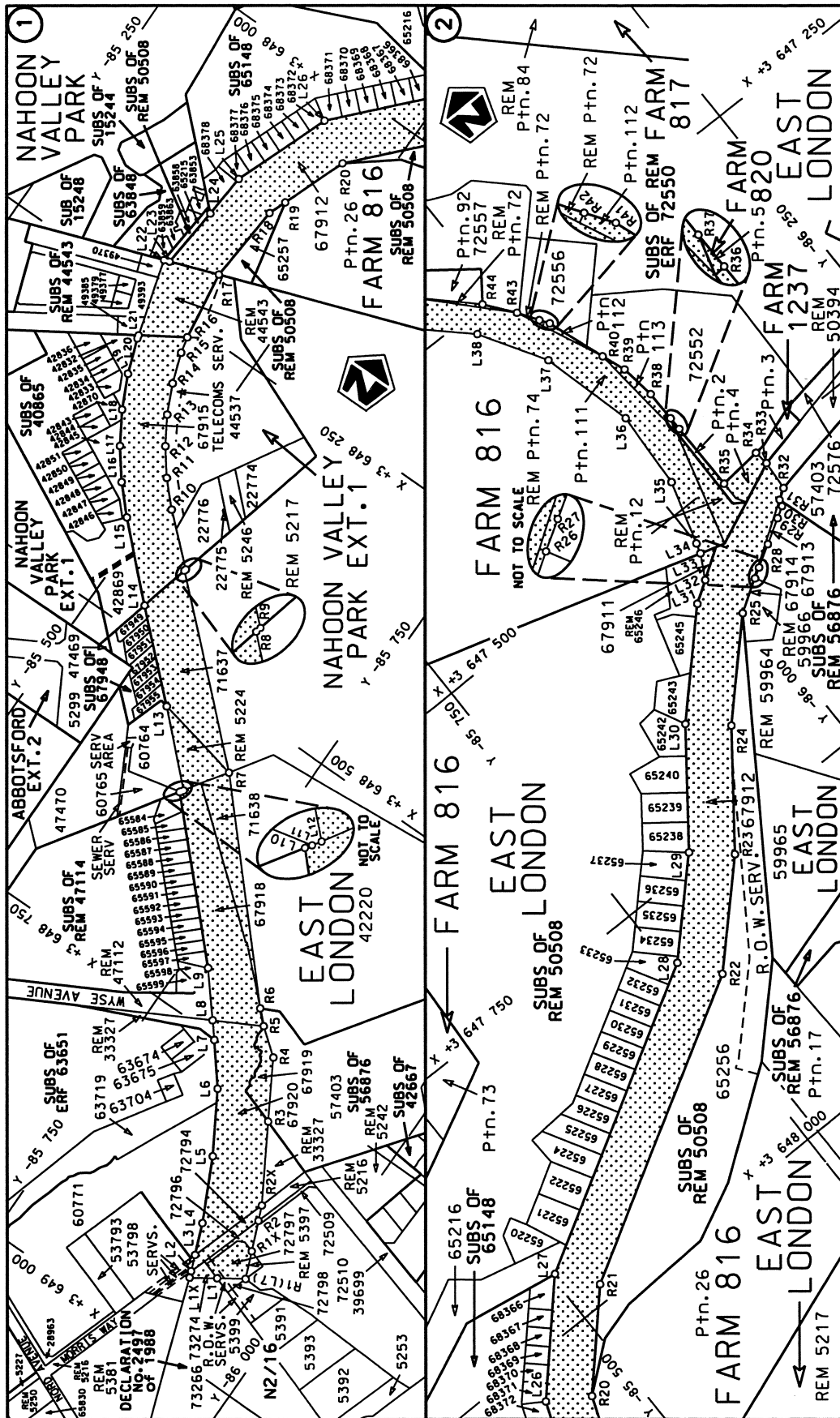
WYSIGING VAN VERKLARING NO. 2136 van 1992

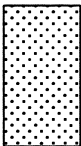
Kragtens artikel 40 (1)(b) van die Wet op die Suid-Afrikaanse Nasionale Padagentskap Beperk en op Nasionale Paaie Wet (Wet No. 7 van 1998), wysig ek hiermee Verklaring no. 2136 van 1992, Skedule B paragraaf 1 deur die gedeelte vanaf Oos-London tot Stutterheim te vervang met meegaande velle 1 tot 26 van Plan No. P588/06.

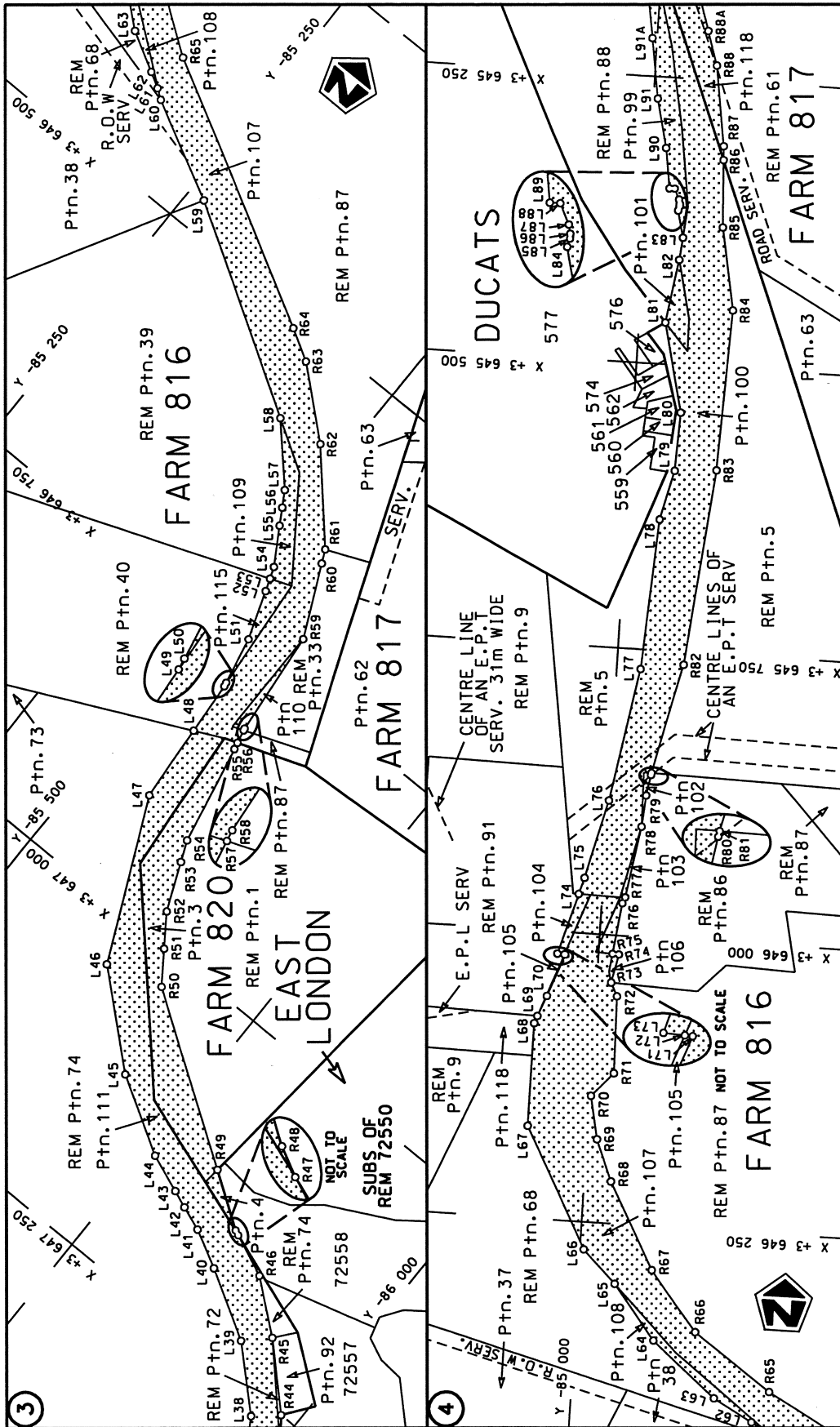
**(Nasionale Pad N6 Seksie 1: Oos-London - Stutterheim)**



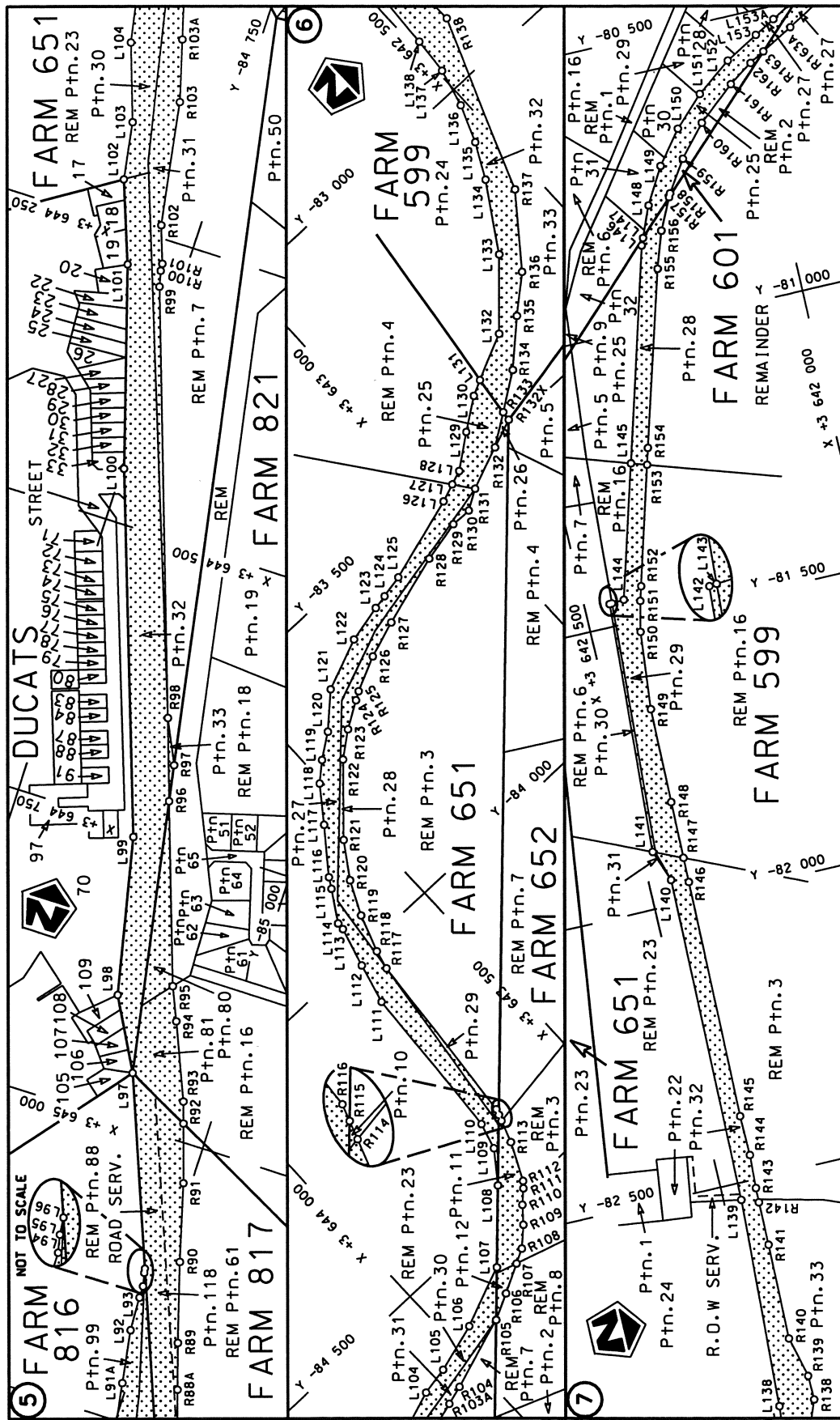
**MINISTER VAN VERVOER**



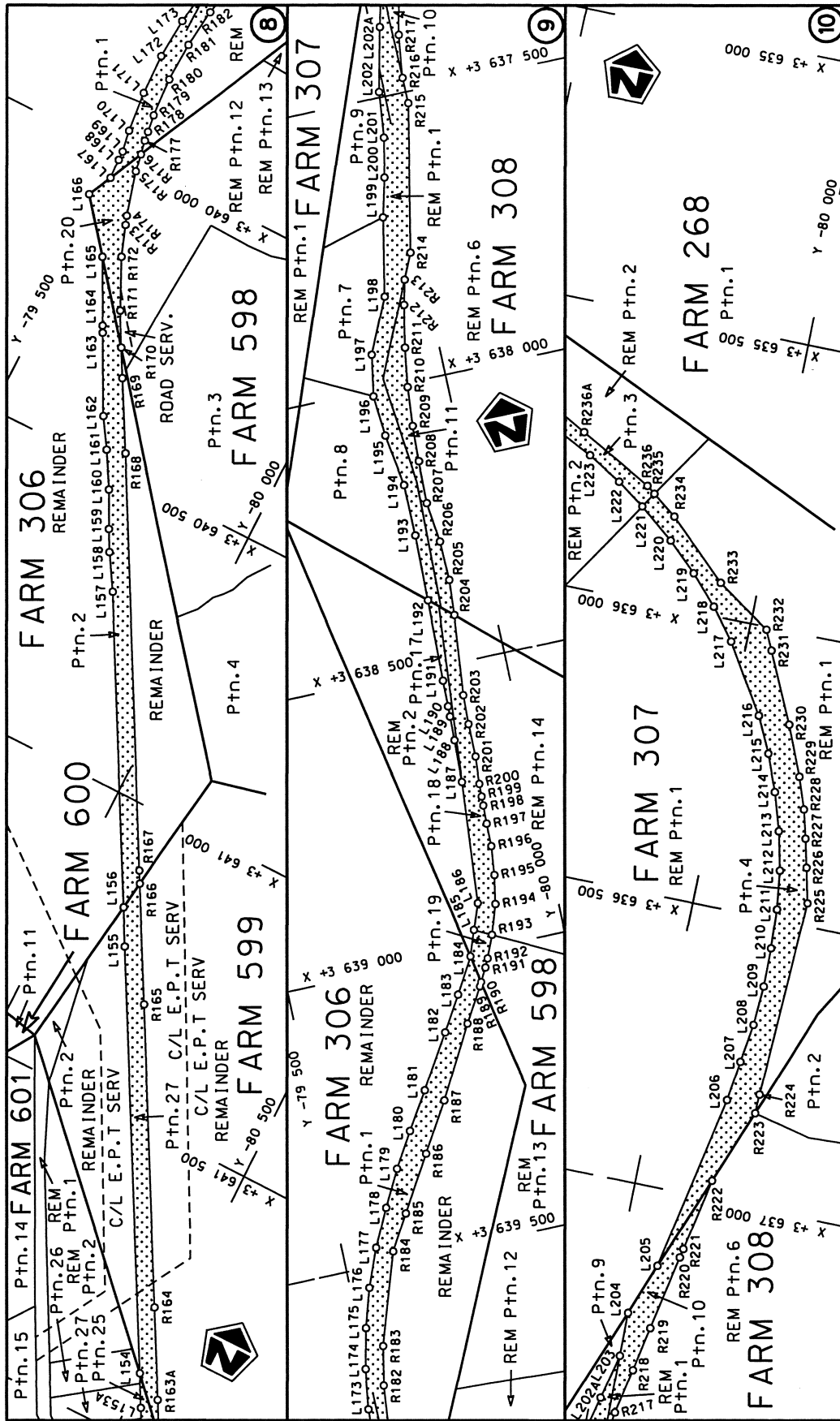
Die Suid Afrikaanse Nasionale Padagentskap Beperk The South African National Roads Agency Limited	Die figuur getoon The figure shown		steeldie padreserwe voor van 'n gedeelte represents the road reserve of a portion van Nasionale Roete N6 of National Route	
			Vel Sheet	van of
		1	Seksie Section	P588/06



<p>Die Suid Afrikaanse Nasionale Padagentskap Beperk The South African National Roads Agency Limited</p>	<p>Die figuur getoon The figure shown</p>	<p>stede padreserwe voor 'n gedeelte represents the road reserve of a portion van Nasionale Roete N6 of National Route</p>
<p>Vel Sheet 2 of 26</p>		<p>Plan P588/06</p>

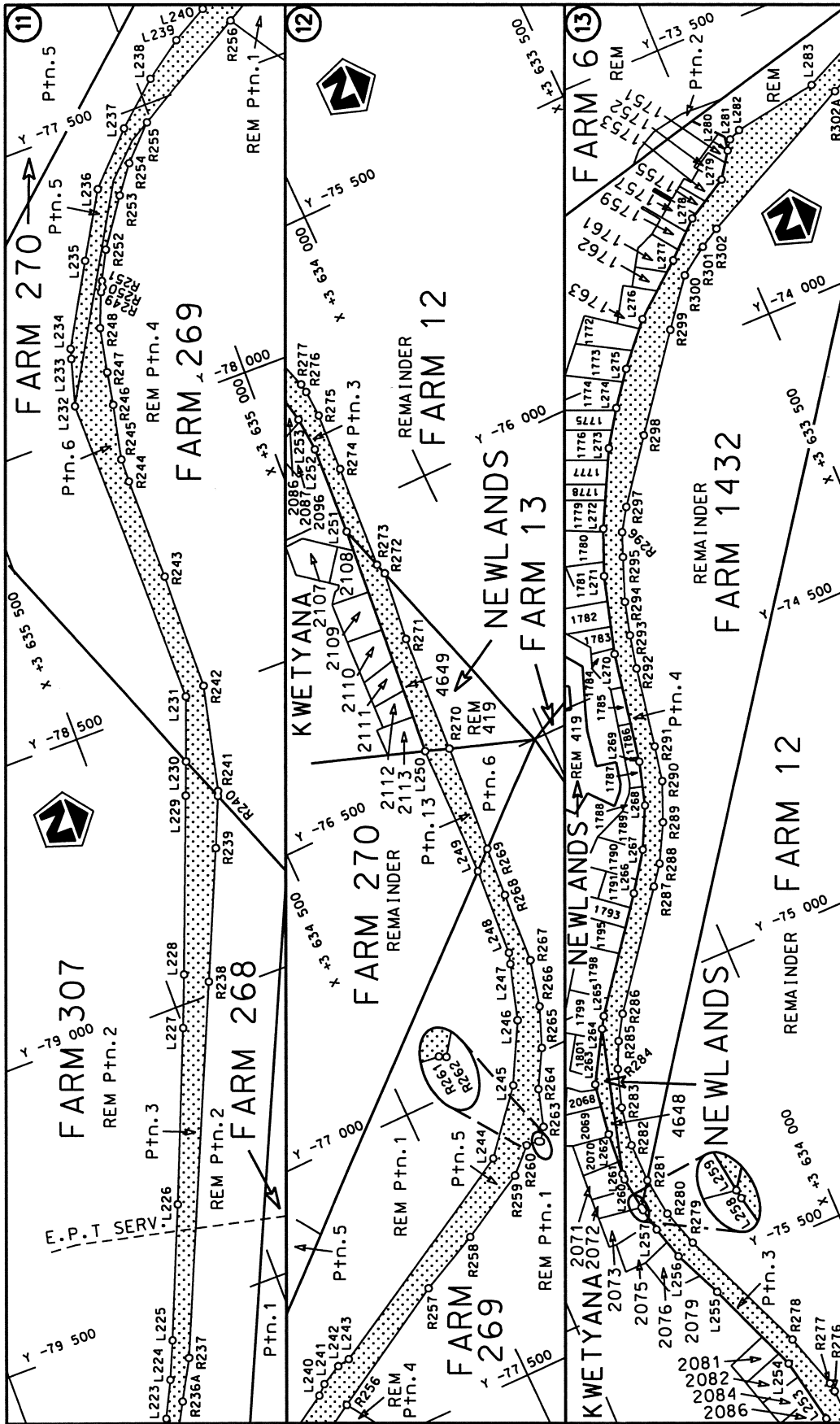


<p>Die Suid Afrikaanse Nasionale Padagentskap Beperk The South African National Roads Agency Limited</p>	<p>Die figuur getoon The figure shown</p>	<p>stel die padreserwe voor van 'n gedeelte represents the road reserve of a portion van Nasionale Roete of National Route</p>
<p>Vel Sheet 3 of 26</p>	<p>1</p>	<p>Plan P588/06</p>



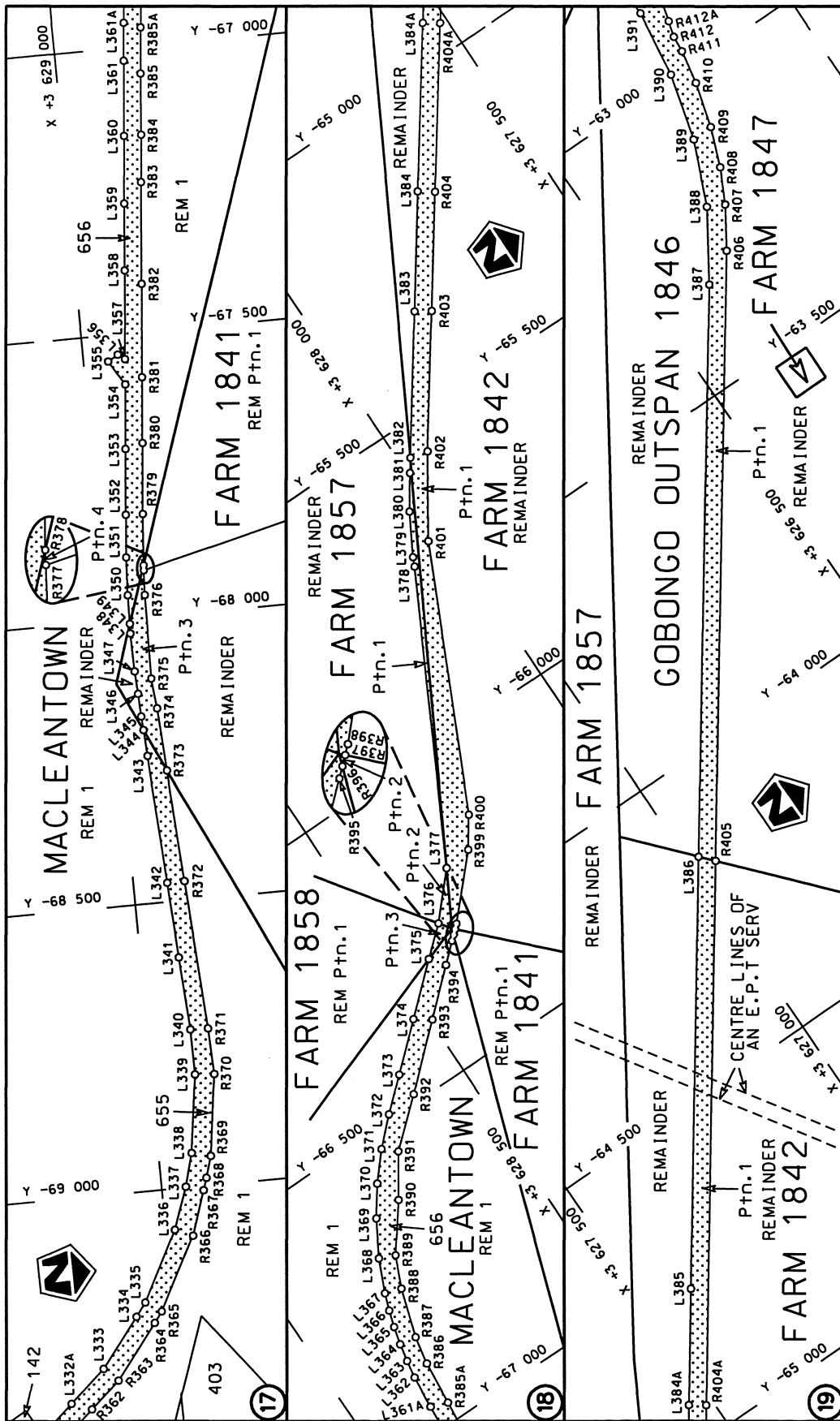
<p>Die Suid Afrikaanse Nasionale Padagentskap Beperk The South African National Roads Agency Limited</p>	<p>Die figuur getoon The figure shown</p>	<p>steldie podreserwe voor van 'n gedeelte represents the road reserve of a portion van Nasionale Roete N6 of National Route</p>	<p>Vel Sheet 4 of 26 Plan P588/06</p>
--	---	--	---



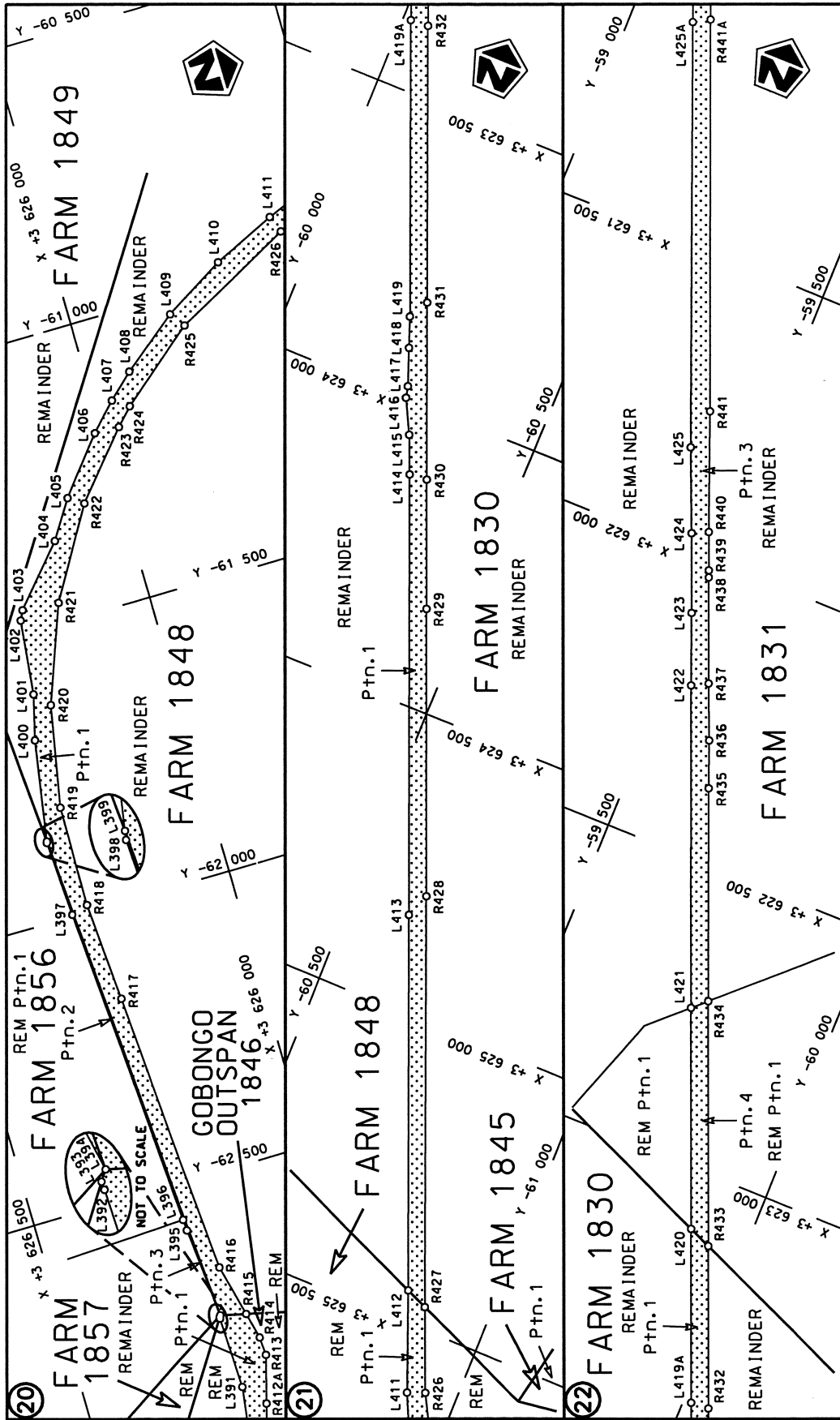


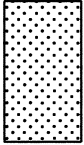
<p>Die Suid Afrikaanse Nasionale Padagentskap Beperk The South African National Roads Agency Limited</p>	<p>Die figuur getoon The figure shown</p> <p>steldie padreserwe voor van 'n gedeelte represents the road reserve of a portion van Nasionale Roete N6 of National Route N6</p> <p>Seksie Section</p>	<p>Vel Sheet</p> <p>5 of</p> <p>van of</p> <p>26 of</p> <p>Plan P588/06</p>
--	---	---

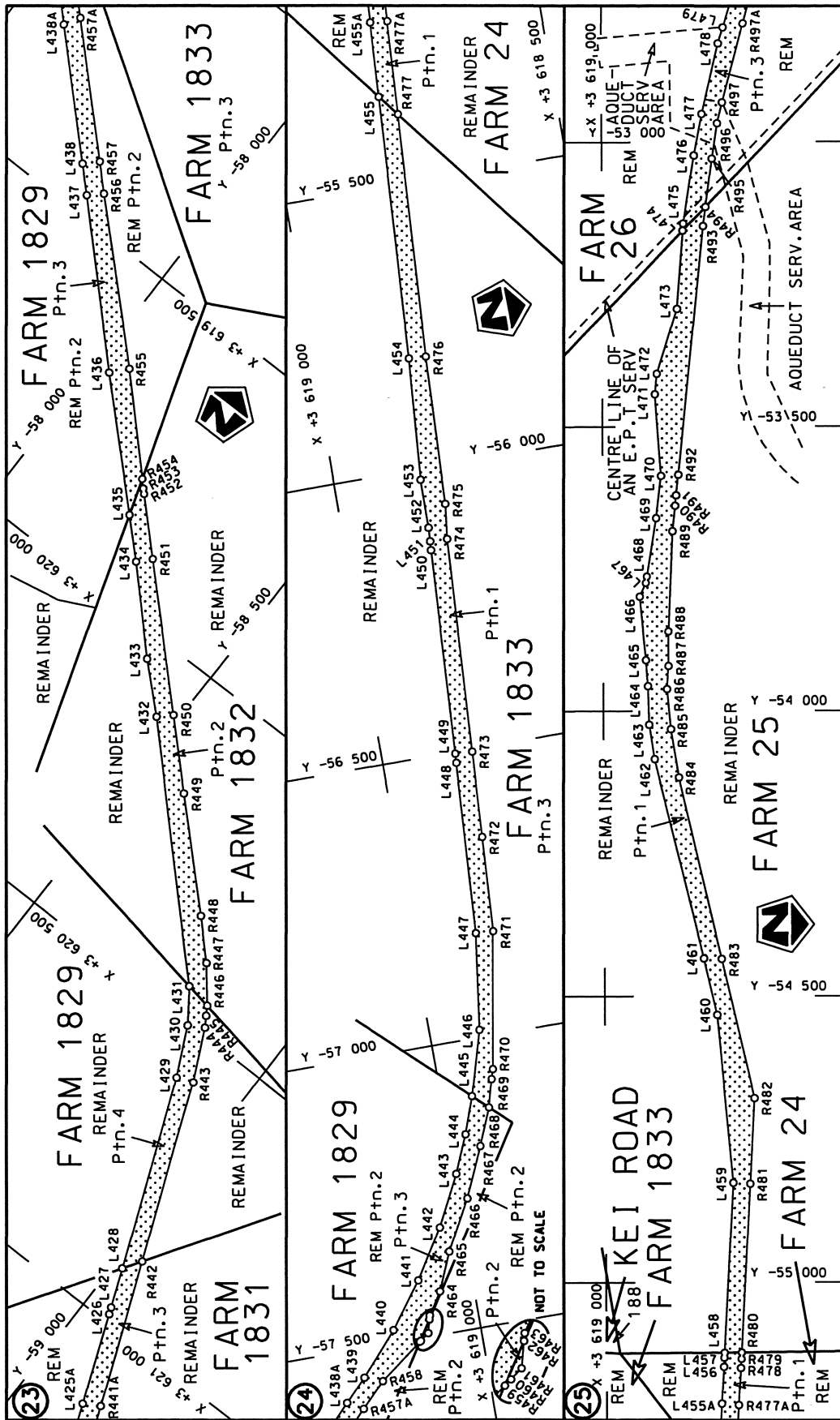


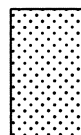


<p>Die Suid Afrikaanse Nasionale Padagentskap Beperk The South African National Roads Agency Limited</p>	<p>Die figuur getoon The figure shown</p>	<p>stede padreserwe voor van 'n gedeelte represents the road reserve of a portion van Nasionale Roete N6 Sektie of National Route N6 Section</p>	<p>Vel Sheet 7 of 26 Plan P588/06</p>
--	---	--	---

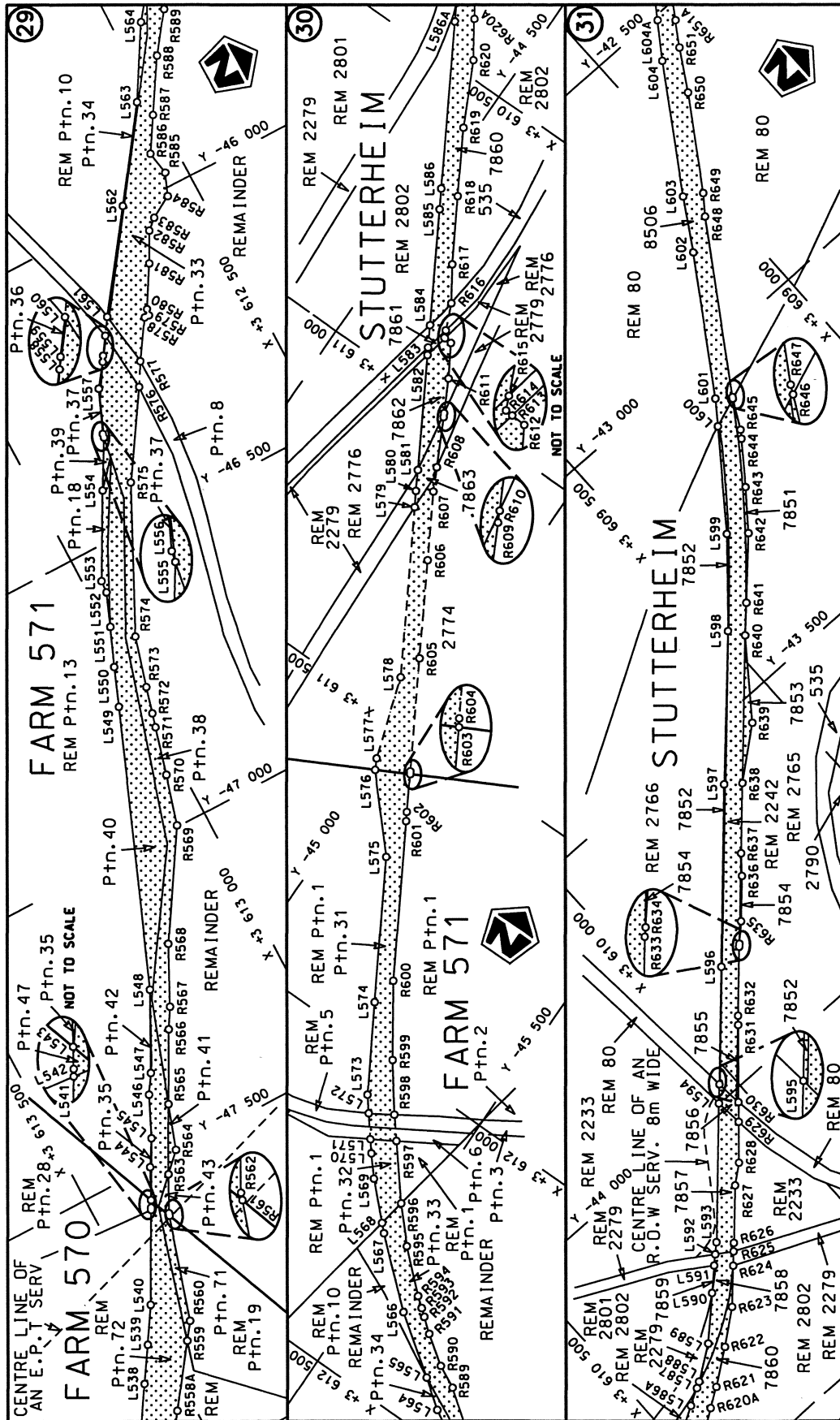


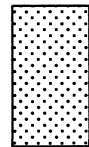
Die Suid Afrikaanse Nasionale Padagentskap Beperk The South African National Roads Agency Limited	Die figuur getoon The figure shown	 steldie padreserwe voor van 'n gedeelte represents the road reserve of a portion van Nasionale Roete N6 of National Route N6	Vel Sheet 8 of 26 Plan P588/06
--	---------------------------------------	---	--------------------------------------

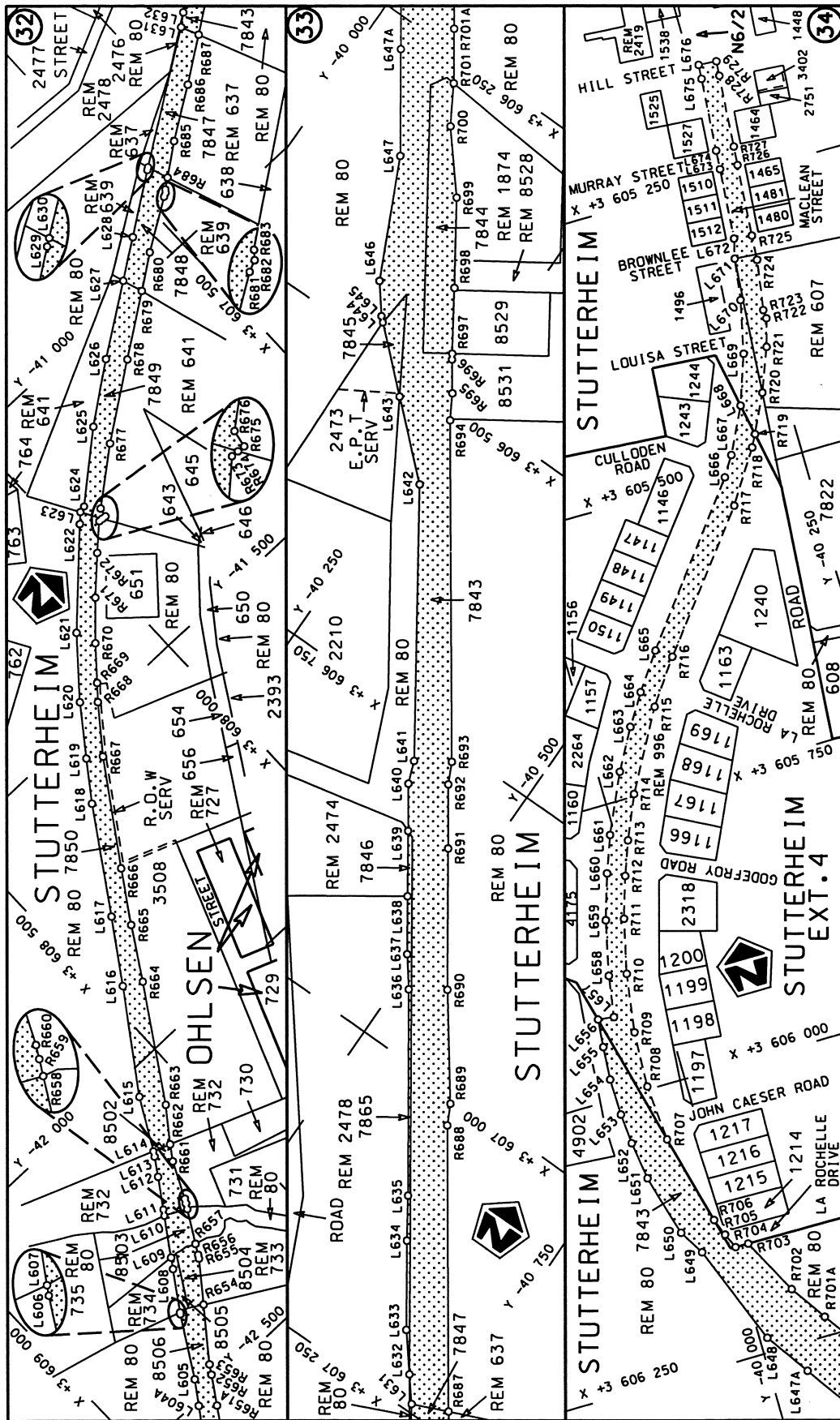


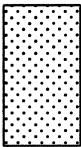
<p>Die Suid Afrikaanse Nasionale Padagentskap Beperk The South African National Roads Agency Limited</p>	<p>Die figuur getoon The figure shown</p>	<p>steeldie padreserwe voor van 'n gedeelte represents the road reserve of a portion van Nasionale Roete N6 of National Route</p>	<p>Vel Sheet 9 van of 26</p>
		<p>Seksie N6 Section</p>	<p>Plan P588/06</p>





<p>Die Suid Afrikaanse Nasionale Padagentskap Beperk The South African National Roads Agency Limited</p>	<p>Die figuur getoon The figure shown</p> 	<p>steldie padreserwe voor van 'n gedeelte represents the road reserve of a portion van Nasionale Roete N6 Seksie of National Route N6 Section</p>
		<p>Vel Sheet 11 of 26 Plan P588/06</p>



<p>Die Suid Afrikaanse Nasionale Padagentskap Beperk The South African National Roads Agency Limited</p>	<p>Die figuur getoon The figure shown</p> <p style="text-align: center;">  </p> <p>stede padreserwe voor van 'n gedeelte represents the road reserve of a portion van Nasionale Roete N6 of National Route</p> <p style="text-align: center;">1</p> <p>Seksie Section</p>	<p>Vel Sheet</p> <p>12 of 26</p> <p>Plan P588/06</p>
--	--	--



PADRESERWE KOÖRDINATE / ROAD RESERVE CO-ORDINATES						
LINKERKANT/LEFT HAND SIDE				REGTERKANT/RIGHT HAND SIDE		
	Y	X	WG 27°		Y	X
L1	- 85 932.16	3 648 921.71		R1	- 85 952.95	3 648 907.80
L1X	- 85 912.30	3 648 934.99		R1X	- 85 943.49	3 648 884.83
L2	- 85 910.07	3 648 929.45		R2	- 85 933.11	3 648 859.68
L3	- 85 904.63	3 648 915.94		R2X	- 85 927.83	3 648 846.89
L4	- 85 893.95	3 648 889.53		R3	- 85 890.40	3 648 783.68
L5	- 85 867.82	3 648 836.60		R4	- 85 862.19	3 648 735.21
L6	- 85 837.55	3 648 785.88		R5	- 85 839.47	3 648 717.75
L7	- 85 810.76	3 648 752.61		R6	- 85 828.03	3 648 706.84
L8	- 85 799.71	3 648 739.41		R7	- 85 687.09	3 648 553.42
L9	- 85 770.22	3 648 704.18		R8	- 85 553.57	3 648 430.35
L10	- 85 661.71	3 648 591.79		R9	- 85 553.96	3 648 428.72
L11	- 85 662.09	3 648 591.26		R10	- 85 513.79	3 648 392.56
L12	- 85 663.81	3 648 588.74		R11	- 85 494.36	3 648 372.03
L13	- 85 609.65	3 648 536.61		R12	- 85 477.37	3 648 349.88
L14	- 85 542.83	3 648 475.28		R13	- 85 462.71	3 648 326.26
L15	- 85 485.45	3 648 420.81		R14	- 85 450.62	3 648 301.17
L16	- 85 463.81	3 648 398.02		R15	- 85 441.20	3 648 275.02
L17	- 85 444.33	3 648 372.73		R16	- 85 437.72	3 648 260.87
L18	- 85 427.53	3 648 345.48		R17	- 85 428.41	3 648 200.08
L19	- 85 413.63	3 648 316.75		R18	- 85 433.99	3 648 130.32
L20	- 85 402.79	3 648 286.61		R19	- 85 439.98	3 648 114.70
L21	- 85 402.06	3 648 283.59		R20	- 85 462.16	3 648 057.28
L22	- 85 382.33	3 648 216.80		R21	- 85 528.96	3 647 985.22
L23	- 85 387.07	3 648 215.17		R22	- 85 781.88	3 647 840.20
L24	- 85 391.41	3 648 160.53		R23	- 85 855.89	3 647 765.19
L25	- 85 394.56	3 648 121.33		R24	- 85 923.87	3 647 675.17
L26	- 85 427.57	3 648 035.72		R25	- 85 993.12	3 647 604.09
L27	- 85 503.69	3 647 953.54		R26	- 86 020.71	3 647 586.96
L28	- 85 757.27	3 647 808.22		R27	- 86 029.35	3 647 581.69
L29	- 85 825.56	3 647 738.98		R28	- 86 048.18	3 647 570.43
L30	- 85 893.47	3 647 649.07		R29	- 86 069.12	3 647 557.90
L31	- 85 967.46	3 647 573.07		R30	- 86 078.84	3 647 551.99
L32	- 85 985.89	3 647 560.93		R31	- 86 080.57	3 647 546.30
L33	- 85 997.24	3 647 540.10		R32	- 86 089.78	3 647 540.29
L34	- 85 999.98	3 647 531.07		R33	- 86 091.74	3 647 513.94
L35	- 86 016.83	3 647 475.46		R34	- 86 090.26	3 647 501.03
L36	- 86 020.58	3 647 406.27		R35	- 86 051.63	3 647 504.93
L37	- 85 999.43	3 647 324.30		R36	- 86 051.25	3 647 442.91
L38	- 85 965.14	3 647 267.55		R37	- 86 051.18	3 647 431.01
L39	- 85 916.87	3 647 222.19		R38	- 86 051.01	3 647 403.53
L40	- 85 858.82	3 647 188.18		R39	- 86 046.48	3 647 372.17
L41	- 85 826.73	3 647 170.93		R40	- 86 038.62	3 647 351.10
L42	- 85 805.95	3 647 162.97		R41	- 86 020.53	3 647 299.66
L43	- 85 790.96	3 647 157.13		R42	- 86 015.16	3 647 291.64
L44	- 85 757.84	3 647 144.56		R43	- 86 003.89	3 647 274.46
L45	- 85 692.99	3 647 106.52		R44	- 85 985.06	3 647 250.03
L46	- 85 620.24	3 647 042.39		R45	- 85 936.57	3 647 202.82
L47	- 85 556.08	3 646 904.88		R46	- 85 893.80	3 647 168.13
L48	- 85 550.47	3 646 836.95		R47	- 85 857.06	3 647 152.62
L49	- 85 546.41	3 646 790.38		R48	- 85 852.60	3 647 150.74
L50	- 85 545.67	3 646 786.88		R49	- 85 807.25	3 647 120.13

Vel Sheet	13	Van of	26	P588/06
--------------	----	-----------	----	---------

PADRESERWE KOÖRDINATE / ROAD RESERVE CO-ORDINATES					
LINKERKANT/LEFT HAND SIDE			REGTERKANT/RIGHT HAND SIDE		
	Y	X	WG 27°		X
L51	- 85 536.88	3 646	745.11	R50	- 85 669.81 3 647 027.35
L52	- 85 521.96	3 646	702.97	R51	- 85 650.58 3 647 000.17
L53	- 85 518.05	3 646	692.14	R52	- 85 631.89 3 646 973.54
L54	- 85 514.30	3 646	682.02	R53	- 85 614.28 3 646 932.44
L55	- 85 495.29	3 646	650.94	R54	- 85 606.44 3 646 914.52
L56	- 85 487.17	3 646	637.22	R55	- 85 587.70 3 646 827.25
L57	- 85 479.13	3 646	623.89	R56	- 85 586.38 3 646 821.23
L58	- 85 436.41	3 646	577.62	R57	- 85 583.77 3 646 809.39
L59	- 85 264.59	3 646	472.67	R58	- 85 583.39 3 646 807.68
L60	- 85 180.41	3 646	428.18	R59	- 85 574.06 3 646 714.67
L61	- 85 171.71	3 646	422.13	R60	- 85 544.98 3 646 653.01
L62	- 85 158.41	3 646	414.63	R61	- 85 539.61 3 646 641.61
L63	- 85 124.64	3 646	395.89	R62	- 85 478.00 3 646 572.90
L64	- 85 068.84	3 646	349.09	R63	- 85 422.52 3 646 525.21
L65	- 85 031.95	3 646	302.08	R64	- 85 395.55 3 646 509.60
L66	- 85 003.33	3 646	273.97	R65	- 85 172.09 3 646 387.36
L67	- 84 947.95	3 646	170.16	R66	- 85 104.80 3 646 339.41
L68	- 84 947.89	3 646	080.90	R67	- 85 063.54 3 646 288.11
L69	- 84 950.17	3 646	074.42	R68	- 85 023.17 3 646 213.57
L70	- 84 957.32	3 646	056.51	R69	- 85 008.84 3 646 177.91
L71	- 84 971.04	3 646	019.53	R70	- 85 001.31 3 646 140.60
L72	- 84 970.30	3 646	019.49	R71	- 85 019.83 3 646 119.81
L73	- 84 964.08	3 646	019.19	R72	- 85 018.28 3 646 052.91
L74	- 84 979.56	3 645	966.17	R73	- 85 012.49 3 646 041.32
L75	- 84 983.76	3 645	951.79	R74	- 85 017.67 3 646 016.47
L76	- 85 000.57	3 645	883.22	R75	- 85 012.10 3 646 016.26
L77	- 85 020.68	3 645	767.20	R76	- 85 017.84 3 645 971.85
L78	- 85 029.21	3 645	635.79	R77	- 85 020.04 3 645 966.40
L79	- 85 039.71	3 645	592.45	R78	- 85 030.32 3 645 904.16
L80	- 85 041.65	3 645	541.38	R79	- 85 032.69 3 645 876.82
L81	- 85 023.23	3 645	463.76	R80	- 85 035.80 3 645 858.75
L82	- 85 031.79	3 645	408.43	R81	- 85 036.10 3 645 857.04
L83	- 85 033.66	3 645	388.90	R82	- 85 058.23 3 645 761.20
L84	- 85 028.06	3 645	365.57	R83	- 85 075.68 3 645 589.82
L85	- 85 029.03	3 645	361.83	R84	- 85 080.92 3 645 449.56
L86	- 85 029.07	3 645	359.73	R85	- 85 067.53 3 645 377.87
L87	- 85 028.15	3 645	355.81	R86	- 85 064.33 3 645 319.08
L88	- 85 023.82	3 645	346.68	R87	- 85 063.67 3 645 306.96
L89	- 85 019.21	3 645	346.77	R88	- 85 053.25 3 645 237.18
L90	- 85 014.08	3 645	311.78	R89	- 85 031.72 3 645 168.33
L91	- 85 003.91	3 645	269.15	R90	- 85 011.62 3 645 100.25
L92	- 84 988.53	3 645	170.58	R91	- 84 993.55 3 645 033.73
L93	- 84 987.35	3 645	140.89	R92	- 84 977.55 3 644 984.18
L94	- 84 987.34	3 645	130.49	R93	- 84 971.64 3 644 965.89
L95	- 84 984.84	3 645	118.94	R94	- 84 944.49 3 644 900.95
L96	- 84 984.23	3 645	115.16	R95	- 84 932.16 3 644 872.63
L97	- 84 921.55	3 644	955.78	R96	- 84 879.51 3 644 719.19
L98	- 84 887.99	3 644	894.86	R97	- 84 873.89 3 644 687.70
L99	- 84 858.85	3 644	758.70	R98	- 84 856.10 3 644 649.92
L100	- 84 751.67	3 644	453.04	R99	- 84 732.64 3 644 290.85
L101	- 84 699.48	3 644	280.93	R100	- 84 729.42 3 644 277.24

Vel	14	Van	26	P588/06
Sheet		of		

PADRESERWE KOÖRDINATE / ROAD RESERVE CO-ORDINATES					
LINKERKANT/LEFT HAND SIDE			REGTERKANT/RIGHT HAND SIDE		
	Y	X	WG 27°		X
L102	- 84 673.32	3 644	210.77	R101	- 84 728.83 3 644 270.94
L103	- 84 665.32	3 644	160.65	R102	- 84 717.55 3 644 239.02
L104	- 84 642.36	3 644	094.57	R103	- 84 699.59 3 644 131.06
L105	- 84 633.35	3 644	045.24	R104	- 84 675.24 3 644 044.37
L106	- 84 609.32	3 643	959.06	R105	- 84 633.94 3 643 916.50
L107	- 84 567.26	3 643	852.75	R106	- 84 611.42 3 643 872.49
L108	- 84 463.56	3 643	753.70	R107	- 84 585.44 3 643 823.42
L109	- 84 411.35	3 643	714.51	R108	- 84 572.46 3 643 798.90
L110	- 84 365.46	3 643	701.71	R109	- 84 543.87 3 643 768.44
L111	- 84 088.43	3 643	685.68	R110	- 84 517.10 3 643 745.87
L112	- 84 018.10	3 643	667.77	R111	- 84 497.20 3 643 725.00
L113	- 83 948.98	3 643	648.50	R112	- 84 487.44 3 643 716.55
L114	- 83 936.10	3 643	647.81	R113	- 84 423.42 3 643 685.82
L115	- 83 883.53	3 643	614.88	R114	- 84 385.21 3 643 672.29
L116	- 83 865.63	3 643	604.35	R115	- 84 374.30 3 643 668.43
L117	- 83 792.52	3 643	547.88	R116	- 84 364.28 3 643 664.88
L118	- 83 734.17	3 643	504.41	R117	- 84 051.61 3 643 639.16
L119	- 83 706.69	3 643	473.20	R118	- 84 017.90 3 643 631.35
L120	- 83 677.35	3 643	431.68	R119	- 83 953.08 3 643 608.76
L121	- 83 626.18	3 643	377.43	R120	- 83 894.83 3 643 580.86
L122	- 83 589.85	3 643	287.80	R121	- 83 835.32 3 643 540.83
L123	- 83 575.28	3 643	222.09	R122	- 83 731.19 3 643 445.51
L124	- 83 570.77	3 643	196.50	R123	- 83 698.17 3 643 403.04
L125	- 83 562.89	3 643	156.00	R124	- 83 670.40 3 643 357.96
L126	- 83 518.63	3 643	006.61	R125	- 83 661.99 3 643 343.83
L127	- 83 507.37	3 642	975.06	R126	- 83 634.15 3 643 283.99
L128	- 83 498.41	3 642	949.95	R127	- 83 612.62 3 643 219.23
L129	- 83 456.49	3 642	893.78	R128	- 83 575.67 3 643 093.96
L130	- 83 419.20	3 642	840.63	R129	- 83 560.13 3 643 021.50
L131	- 83 406.33	3 642	813.48	R130	- 83 561.30 3 642 984.76
L132	- 83 369.51	3 642	733.41	R131	- 83 540.77 3 642 950.28
L133	- 83 267.36	3 642	638.32	R132	- 83 511.40 3 642 874.77
L134	- 83 154.95	3 642	566.44	R132X	- 83 491.79 3 642 824.37
L135	- 83 094.01	3 642	535.16	R133	- 83 475.40 3 642 822.28
L136	- 83 028.52	3 642	510.02	R134	- 83 432.22 3 642 759.43
L137	- 82 961.39	3 642	492.84	R135	- 83 367.30 3 642 689.63
L138	- 82 896.84	3 642	487.25	R136	- 83 316.72 3 642 630.30
L139	- 82 529.75	3 642	469.39	R137	- 83 201.95 3 642 540.57
L140	- 81 956.60	3 642	460.98	R138	- 82 899.47 3 642 424.23
L141	- 81 901.40	3 642	481.04	R139	- 82 856.62 3 642 425.15
L142	- 81 460.07	3 642	456.10	R140	- 82 784.90 3 642 443.68
L143	- 81 459.74	3 642	451.65	R141	- 82 616.74 3 642 441.09
L144	- 81 458.13	3 642	429.90	R142	- 82 540.90 3 642 440.47
L145	- 81 227.08	3 642	362.71	R143	- 82 515.41 3 642 439.80
L146	- 80 858.18	3 642	256.91	R144	- 82 456.79 3 642 436.91
L147	- 80 845.76	3 642	251.63	R145	- 82 386.82 3 642 437.93
L148	- 80 792.18	3 642	229.08	R146	- 81 967.13 3 642 431.45
L149	- 80 729.52	3 642	192.59	R147	- 81 923.79 3 642 430.91
L150	- 80 672.49	3 642	148.31	R148	- 81 823.64 3 642 429.55
L151	- 80 621.77	3 642	097.16	R149	- 81 656.73 3 642 427.05
L152	- 80 575.82	3 642	036.16	R150	- 81 520.11 3 642 413.76

Vel Sheet	15	Van of	26	P588/06
--------------	----	-----------	----	---------

PADRESERWE KOÖRDINATE / ROAD RESERVE CO-ORDINATES						
LINKERKANT/LEFT HAND SIDE			REGTERKANT/RIGHT HAND SIDE			
	Y	X	WG 27°		X	
L153	- 80 543.02	3 641	978.17	R151	- 81 467.08	3 642 401.72
L154	- 80 493.68	3 641	888.94	R152	- 81 442.12	3 642 394.37
L155	- 80 132.73	3 641	236.18	R153	- 81 236.07	3 642 335.34
L156	- 80 099.57	3 641	175.99	R154	- 81 207.33	3 642 327.11
L157	- 79 831.94	3 640	691.38	R155	- 80 904.42	3 642 238.79
L158	- 79 795.43	3 640	631.75	R156	- 80 840.72	3 642 217.11
L159	- 79 776.03	3 640	595.95	R157	- 80 786.50	3 642 190.61
L160	- 79 744.81	3 640	534.02	R158	- 80 780.10	3 642 187.48
L161	- 79 709.11	3 640	473.47	R159	- 80 725.90	3 642 151.87
L162	- 79 677.21	3 640	423.30	R160	- 80 672.00	3 642 105.22
L163	- 79 609.92	3 640	293.21	R161	- 80 617.34	3 642 040.23
L164	- 79 604.16	3 640	282.15	R162	- 80 588.86	3 641 998.44
L165	- 79 549.04	3 640	174.93	R163	- 80 574.20	3 641 971.90
L166	- 79 478.82	3 640	087.27	R164	- 80 465.04	3 641 774.21
L167	- 79 498.81	3 640	045.12	R165	- 80 209.01	3 641 310.96
L168	- 79 496.96	3 640	010.50	R166	- 80 106.46	3 641 125.80
L169	- 79 496.65	3 639	994.34	R167	- 80 095.39	3 641 105.79
L170	- 79 490.11	3 639	956.86	R168	- 79 741.39	3 640 464.04
L171	- 79 483.38	3 639	885.79	R169	- 79 676.76	3 640 348.78
L172	- 79 482.01	3 639	814.24	R170	- 79 650.68	3 640 301.82
L173	- 79 486.35	3 639	742.84	R171	- 79 619.38	3 640 244.85
L174	- 79 496.12	3 639	672.86	R172	- 79 578.59	3 640 159.71
L175	- 79 511.92	3 639	602.90	R173	- 79 559.79	3 640 106.72
L176	- 79 532.80	3 639	535.07	R174	- 79 554.46	3 640 091.45
L177	- 79 559.41	3 639	469.01	R175	- 79 533.49	3 640 014.63
L178	- 79 591.12	3 639	404.57	R176	- 79 527.71	3 639 984.17
L179	- 79 624.35	3 639	342.28	R177	- 79 523.07	3 639 959.69
L180	- 79 660.62	3 639	282.64	R178	- 79 520.98	3 639 943.19
L181	- 79 700.57	3 639	218.58	R179	- 79 517.00	3 639 912.78
L182	- 79 756.39	3 639	127.38	R180	- 79 512.73	3 639 844.37
L183	- 79 792.68	3 639	067.78	R181	- 79 514.70	3 639 775.43
L184	- 79 828.65	3 639	007.12	R182	- 79 521.62	3 639 707.30
L185	- 79 844.62	3 638	963.25	R183	- 79 534.85	3 639 639.57
L186	- 79 861.12	3 638	918.71	R184	- 79 587.45	3 639 481.60
L187	- 79 878.14	3 638	705.50	R185	- 79 622.79	3 639 421.78
L188	- 79 880.32	3 638	631.05	R186	- 79 679.30	3 639 327.12
L189	- 79 881.42	3 638	588.91	R187	- 79 730.17	3 639 243.08
L190	- 79 881.83	3 638	570.69	R188	- 79 798.46	3 639 120.74
L191	- 79 882.73	3 638	524.81	R189	- 79 834.26	3 639 062.08
L192	- 79 886.72	3 638	381.21	R190	- 79 838.14	3 639 055.14
L193	- 79 889.70	3 638	265.31	R191	- 79 851.07	3 639 032.00
L194	- 79 889.20	3 638	174.59	R192	- 79 858.36	3 639 017.24
L195	- 79 874.94	3 638	082.17	R193	- 79 874.79	3 638 978.59
L196	- 79 869.25	3 638	010.60	R194	- 79 891.86	3 638 926.90
L197	- 79 881.74	3 637	938.50	R195	- 79 900.87	3 638 876.97
L198	- 79 925.05	3 637	843.55	R196	- 79 906.25	3 638 826.46
L199	- 79 951.72	3 637	706.98	R197	- 79 906.48	3 638 786.18
L200	- 79 968.97	3 637	639.06	R198	- 79 907.28	3 638 753.87
L201	- 79 982.39	3 637	570.38	R199	- 79 907.67	3 638 737.87
L202	- 79 991.11	3 637	490.47	R200	- 79 908.27	3 638 715.40
L203	- 80 034.41	3 637	300.86	R201	- 79 911.34	3 638 666.90

Vel Sheet	16	Van of	26	P588/06
--------------	----	-----------	----	---------

PADRESERWE KOÖRDINATE / ROAD RESERVE CO-ORDINATES						
LINKERKANT/LEFT HAND SIDE				REGTERKANT/RIGHT HAND SIDE		
	Y	X	WG 27°		Y	X
L204	- 80 033.52	3 637	224.27	R202	- 79 910.95	3 638 608.68
L205	- 80 067.97	3 637	133.29	R203	- 79 912.40	3 638 557.17
L206	- 80 128.23	3 636	825.00	R204	- 79 926.43	3 638 416.37
L207	- 80 137.55	3 636	755.29	R205	- 79 930.64	3 638 354.27
L208	- 80 146.77	3 636	687.54	R206	- 79 929.08	3 638 284.77
L209	- 80 150.81	3 636	618.12	R207	- 79 920.89	3 638 213.83
L210	- 80 150.09	3 636	549.81	R208	- 79 922.86	3 638 138.78
L211	- 80 146.31	3 636	481.47	R209	- 79 925.61	3 638 076.02
L212	- 80 137.65	3 636	413.71	R210	- 79 931.35	3 638 007.27
L213	- 80 121.92	3 636	346.46	R211	- 79 941.59	3 637 938.83
L214	- 80 101.44	3 636	280.61	R212	- 79 955.52	3 637 865.09
L215	- 80 076.17	3 636	216.98	R213	- 79 965.71	3 637 821.99
L216	- 80 046.58	3 636	155.18	R214	- 79 985.80	3 637 777.73
L217	- 79 973.14	3 636	037.52	R215	- 80 037.20	3 637 520.32
L218	- 79 930.79	3 635	983.57	R216	- 80 036.65	3 637 474.87
L219	- 79 884.61	3 635	933.29	R217	- 80 046.19	3 637 399.70
L220	- 79 833.98	3 635	885.36	R218	- 80 062.10	3 637 321.04
L221	- 79 773.08	3 635	836.55	R219	- 80 077.56	3 637 242.64
L222	- 79 724.16	3 635	802.25	R220	- 80 103.12	3 637 111.11
L223	- 79 665.06	3 635	766.73	R221	- 80 106.15	3 637 095.29
L224	- 79 603.82	3 635	736.00	R222	- 80 130.85	3 636 968.22
L225	- 79 540.65	3 635	708.30	R223	- 80 180.90	3 636 837.79
L226	- 79 322.00	3 635	616.64	R224	- 80 181.80	3 636 804.26
L227	- 79 037.76	3 635	500.57	R225	- 80 196.88	3 636 459.91
L228	- 78 950.88	3 635	466.35	R226	- 80 182.78	3 636 399.12
L229	- 78 659.17	3 635	354.42	R227	- 80 170.69	3 636 349.72
L230	- 78 603.53	3 635	333.04	R228	- 80 157.64	3 636 300.20
L231	- 78 496.89	3 635	293.65	R229	- 80 138.36	3 636 245.79
L232	- 77 951.76	3 635	298.85	R230	- 80 101.80	3 636 159.89
L233	- 77 871.79	3 635	276.04	R231	- 80 045.41	3 636 038.86
L234	- 77 854.93	3 635	271.11	R232	- 80 029.37	3 636 004.85
L235	- 77 719.39	3 635	193.32	R233	- 79 934.21	3 635 940.35
L236	- 77 609.65	3 635	129.03	R234	- 79 831.68	3 635 842.63
L237	- 77 525.96	3 635	049.15	R235	- 79 789.60	3 635 810.47
L238	- 77 460.75	3 634	975.06	R236	- 79 774.81	3 635 799.17
L239	- 77 413.61	3 634	908.44	R237	- 79 579.43	3 635 692.02
L240	- 77 378.26	3 634	846.79	R238	- 78 977.52	3 635 431.21
L241	- 77 363.88	3 634	830.13	R239	- 78 763.05	3 635 338.36
L242	- 77 346.28	3 634	794.12	R240	- 78 678.80	3 635 303.05
L243	- 77 343.02	3 634	771.90	R241	- 78 670.78	3 635 299.64
L244	- 77 132.45	3 634	394.93	R242	- 78 490.01	3 635 258.85
L245	- 77 032.17	3 634	308.99	R243	- 78 287.08	3 635 255.25
L246	- 76 932.58	3 634	254.26	R244	- 78 108.40	3 635 256.57
L247	- 76 838.30	3 634	224.16	R245	- 78 067.65	3 635 255.73
L248	- 76 819.53	3 634	218.22	R246	- 77 972.75	3 635 235.59
L249	- 76 666.97	3 634	208.28	R247	- 77 915.72	3 635 225.38
L250	- 76 438.21	3 634	202.72	R248	- 77 838.96	3 635 210.07
L251	- 76 031.72	3 634	164.27	R249	- 77 780.73	3 635 186.71
L252	- 75 876.65	3 634	155.31	R250	- 77 773.16	3 635 181.07
L253	- 75 817.26	3 634	159.43	R251	- 77 762.60	3 635 178.21
L254	- 75 702.81	3 634	182.93	R252	- 77 713.73	3 635 152.86

Vel  
Sheet

17

Van

26

of

P588/06

PADRESERWE KOÖRDINATE / ROAD RESERVE CO-ORDINATES							
LINKERKANT/LEFT HAND SIDE			REGTERKANT/RIGHT HAND SIDE				
	Y	X	WG 27°		Y	X	
L255	- 75	539.35	3 634 248.54	R253	- 77	633.49	3 635 097.23
L256	- 75	455.68	3 634 286.62	R254	- 77	586.01	3 635 061.76
L257	- 75	397.74	3 634 304.08	R255	- 77	530.13	3 635 007.56
L258	- 75	357.43	3 634 313.24	R256	- 77	413.91	3 634 809.02
L259	- 75	352.14	3 634 314.12	R257	- 77	289.63	3 634 593.79
L260	- 75	295.48	3 634 322.45	R258	- 77	238.95	3 634 490.17
L261	- 75	285.07	3 634 321.84	R259	- 77	175.72	3 634 372.58
L262	- 75	212.40	3 634 317.21	R260	- 77	136.41	3 634 332.16
L263	- 75	123.68	3 634 304.62	R261	- 77	138.70	3 634 310.96
L264	- 75	039.36	3 634 256.20	R262	- 77	140.79	3 634 307.10
L265	- 75	019.75	3 634 244.70	R263	- 77	119.61	3 634 292.09
L266	- 74	842.82	3 634 112.87	R264	- 77	056.38	3 634 272.35
L267	- 74	778.58	3 634 068.59	R265	- 76	993.97	3 634 236.61
L268	- 74	708.88	3 634 034.96	R266	- 76	926.66	3 634 209.73
L269	- 74	634.58	3 634 014.44	R267	- 76	846.95	3 634 190.09
L270	- 74	444.63	3 633 980.95	R268	- 76	725.21	3 634 182.08
L271	- 74	311.89	3 633 944.58	R269	- 76	638.75	3 634 176.37
L272	- 74	234.74	3 633 913.35	R270	- 76	451.85	3 634 162.94
L273	- 74	108.08	3 633 849.64	R271	- 76	246.28	3 634 150.12
L274	- 74	048.16	3 633 810.28	R272	- 76	126.19	3 634 135.13
L275	- 73	991.54	3 633 767.73	R273	- 76	106.73	3 634 141.12
L276	- 73	922.30	3 633 707.48	R274	- 75	927.27	3 634 128.69
L277	- 73	848.78	3 633 617.20	R275	- 75	825.73	3 634 123.92
L278	- 73	794.19	3 633 558.23	R276	- 75	779.08	3 634 127.08
L279	- 73	751.34	3 633 484.83	R277	- 75	763.11	3 634 129.38
L280	- 73	708.54	3 633 455.34	R278	- 75	666.98	3 634 160.55
L281	- 73	692.24	3 633 443.84	R279	- 75	443.57	3 634 254.41
L282	- 73	683.13	3 633 423.10	R280	- 75	379.84	3 634 275.57
L283	- 73	659.39	3 633 276.07	R281	- 75	312.56	3 634 286.06
L284	- 73	603.76	3 633 153.49	R282	- 75	245.63	3 634 287.96
L285	- 73	553.75	3 633 064.17	R283	- 75	178.54	3 634 278.15
L286	- 73	521.67	3 633 017.77	R284	- 75	113.91	3 634 258.15
L287	- 73	517.91	3 633 012.54	R285	- 75	069.84	3 634 237.92
L288	- 72	886.33	3 632 099.94	R286	- 75	028.47	3 634 212.73
L289	- 72	857.46	3 632 067.08	R287	- 74	845.77	3 634 075.65
L290	- 72	809.38	3 632 010.44	R288	- 74	812.77	3 634 050.45
L291	- 72	789.65	3 631 987.77	R289	- 74	748.59	3 634 016.65
L292	- 72	767.44	3 631 962.29	R290	- 74	681.83	3 633 989.85
L293	- 72	738.65	3 631 932.84	R291	- 74	620.80	3 633 978.80
L294	- 72	614.64	3 631 805.30	R292	- 74	482.88	3 633 955.53
L295	- 72	287.42	3 631 489.25	R293	- 74	424.77	3 633 943.61
L296	- 71	492.36	3 630 721.82	R294	- 74	367.28	3 633 928.72
L297	- 71	413.58	3 630 661.71	R295	- 74	293.50	3 633 901.29
L298	- 71	136.68	3 630 476.62	R296	- 74	252.77	3 633 885.53
L299	- 71	052.81	3 630 421.78	R297	- 74	214.70	3 633 861.66
L300	- 70	982.95	3 630 384.71	R298	- 74	110.82	3 633 784.32
L301	- 70	959.39	3 630 377.05	R299	- 73	959.03	3 633 669.14
L302	- 70	917.77	3 630 363.29	R300	- 73	880.77	3 633 608.93
L303	- 70	394.73	3 630 197.20	R301	- 73	847.04	3 633 560.58
L304	- 70	368.93	3 630 189.47	R302	- 73	827.21	3 633 526.48
L305	- 70	354.90	3 630 185.25	R303	- 73	623.61	3 633 117.61

Vel	18	Van	26	P588/06
Sheet		of		

PADRESERWE KOÖRDINATE / ROAD RESERVE CO-ORDINATES									
LINKERKANT/LEFT HAND SIDE					REGTERKANT/RIGHT HAND SIDE				
	Y	X	WG 27°		Y	X			
L306	- 70 345.17	3 630	182.53	R304	- 73 596.16	3 633	068.07		
L307	- 70 258.24	3 630	156.85	R305	- 73 542.52	3 632	977.34		
L308	- 70 163.59	3 630	128.73	R306	- 73 462.29	3 632	861.83		
L309	- 70 086.50	3 630	099.95	R307	- 73 453.23	3 632	848.89		
L310	- 70 061.63	3 630	089.95	R308	- 73 336.79	3 632	681.24		
L311	- 70 028.15	3 630	076.40	R309	- 73 299.92	3 632	622.24		
L312	- 70 021.24	3 630	073.60	R310	- 73 260.41	3 632	564.77		
L313	- 69 994.89	3 630	062.94	R311	- 73 194.56	3 632	476.18		
L314	- 69 974.68	3 630	054.76	R312	- 73 052.99	3 632	271.48		
L315	- 69 968.54	3 630	052.27	R313	- 72 896.15	3 632	035.17		
L316	- 69 942.18	3 630	041.61	R314	- 72 800.32	3 631	931.13		
L317	- 69 939.08	3 630	040.35	R315	- 72 767.79	3 631	898.13		
L318	- 69 897.55	3 630	000.18	R316	- 72 754.05	3 631	884.20		
L319	- 69 825.41	3 629	904.07	R317	- 72 729.47	3 631	862.40		
L320	- 69 784.67	3 629	849.79	R318	- 72 647.26	3 631	785.87		
L321	- 69 766.88	3 629	821.53	R319	- 72 579.12	3 631	725.65		
L322	- 69 713.20	3 629	736.29	R320	- 72 178.29	3 631	338.70		
L323	- 69 700.32	3 629	715.83	R321	- 72 046.34	3 631	211.55		
L324	- 69 646.65	3 629	630.60	R322	- 71 860.22	3 631	031.98		
L325	- 69 593.00	3 629	545.40	R323	- 71 775.63	3 630	950.41		
L326	- 69 580.12	3 629	524.90	R324	- 71 750.42	3 630	926.03		
L327	- 69 526.57	3 629	439.54	R325	- 71 478.87	3 630	664.73		
L328	- 69 473.06	3 629	354.25	R326	- 71 423.99	3 630	617.86		
L329	- 69 460.20	3 629	333.75	R327	- 71 369.90	3 630	573.08		
L330	- 69 433.07	3 629	290.28	R328	- 71 313.14	3 630	530.39		
L331	- 69 405.02	3 629	249.38	R329	- 71 255.90	3 630	490.44		
L332	- 69 394.40	3 629	233.93	R330	- 71 196.15	3 630	452.39		
L333	- 69 301.56	3 629	131.77	R331	- 71 160.12	3 630	433.37		
L334	- 69 216.46	3 629	065.81	R332	- 71 005.16	3 630	360.95		
L335	- 69 193.10	3 629	047.81	R333	- 70 976.79	3 630	347.69		
L336	- 69 071.58	3 628	983.90	R334	- 70 911.05	3 630	321.92		
L337	- 68 998.44	3 628	957.83	R335	- 70 844.46	3 630	298.92		
L338	- 68 940.89	3 628	942.30	R336	- 70 696.90	3 630	254.88		
L339	- 68 804.93	3 628	923.81	R337	- 70 667.72	3 630	246.32		
L340	- 68 725.93	3 628	924.14	R338	- 70 555.61	3 630	213.20		
L341	- 68 598.75	3 628	931.71	R339	- 70 540.12	3 630	208.83		
L342	- 68 466.58	3 628	939.65	R340	- 70 172.58	3 630	100.10		
L343	- 68 241.91	3 628	953.73	R341	- 70 099.47	3 630	072.85		
L344	- 68 196.17	3 628	956.59	R342	- 69 952.50	3 629	979.73		
L345	- 68 172.10	3 628	958.10	R343	- 69 926.74	3 629	960.62		
L346	- 68 132.07	3 628	960.10	R344	- 69 904.91	3 629	944.09		
L347	- 68 092.25	3 628	962.25	R345	- 69 853.34	3 629	888.53		
L348	- 68 025.33	3 628	963.39	R346	- 69 838.25	3 629	872.27		
L349	- 68 008.23	3 628	963.05	R347	- 69 836.29	3 629	869.59		
L350	- 67 957.91	3 628	962.04	R348	- 69 821.14	3 629	848.89		
L351	- 67 891.39	3 628	958.39	R349	- 69 818.07	3 629	844.20		
L352	- 67 816.60	3 628	951.85	R350	- 69 809.10	3 629	832.43		
L353	- 67 701.25	3 628	941.86	R351	- 69 792.61	3 629	807.21		
L354	- 67 588.28	3 628	931.51	R352	- 69 737.42	3 629	722.83		
L355	- 67 545.44	3 628	957.28	R353	- 69 724.76	3 629	702.23		
L356	- 67 535.14	3 628	939.70	R354	- 69 672.21	3 629	616.37		

Vel	19	Van	26	P588/06
Sheet		of		

PADRESERWE KOÖRDINATE / ROAD RESERVE CO-ORDINATES						
LINKERKANT/LEFT HAND SIDE				REGTERKANT/RIGHT HAND SIDE		
	Y	X	WG 27°		Y	X
L357	- 67 544.08	3 628	927.81	R355	- 69 619.66	3 629 530.52
L358	- 67 389.00	3 628	913.96	R356	- 69 606.79	3 629 509.99
L359	- 67 272.11	3 628	903.55	R357	- 69 553.27	3 629 424.66
L360	- 67 153.89	3 628	893.17	R358	- 69 499.79	3 629 339.38
L361	- 67 022.57	3 628	881.18	R359	- 69 486.74	3 629 318.98
L362	- 66 898.05	3 628	870.03	R360	- 69 432.92	3 629 233.85
L363	- 66 866.73	3 628	864.89	R361	- 69 420.48	3 629 214.17
L364	- 66 835.63	3 628	858.66	R362	- 69 370.25	3 629 158.29
L365	- 66 804.44	3 628	850.63	R363	- 69 324.45	3 629 108.01
L366	- 66 775.81	3 628	841.81	R364	- 69 230.05	3 629 034.50
L367	- 66 746.61	3 628	831.18	R365	- 69 211.21	3 629 020.30
L368	- 66 690.01	3 628	805.96	R366	- 69 084.81	3 628 953.80
L369	- 66 629.45	3 628	770.92	R367	- 69 007.48	3 628 928.27
L370	- 66 579.87	3 628	735.76	R368	- 68 986.30	3 628 921.45
L371	- 66 533.99	3 628	695.94	R369	- 68 948.72	3 628 910.16
L372	- 66 490.95	3 628	651.20	R370	- 68 807.03	3 628 890.94
L373	- 66 443.52	3 628	597.87	R371	- 68 726.89	3 628 894.08
L374	- 66 377.01	3 628	523.03	R372	- 68 466.41	3 628 909.64
L375	- 66 304.72	3 628	442.07	R373	- 68 270.63	3 628 921.71
L376	- 66 261.96	3 628	393.66	R374	- 68 160.58	3 628 928.69
L377	- 66 189.61	3 628	327.99	R375	- 68 107.52	3 628 934.07
L378	- 65 719.17	3 628	080.19	R376	- 67 960.35	3 628 932.13
L379	- 65 703.92	3 628	073.29	R377	- 67 916.97	3 628 929.69
L380	- 65 633.72	3 628	033.60	R378	- 67 908.17	3 628 929.19
L381	- 65 577.54	3 627	995.47	R379	- 67 818.17	3 628 922.00
L382	- 65 555.71	3 627	979.97	R380	- 67 693.74	3 628 910.95
L383	- 65 346.19	3 627	830.92	R381	- 67 578.62	3 628 900.85
L384	- 65 174.34	3 627	709.11	R382	- 67 415.28	3 628 886.39
L385	- 64 767.11	3 627	419.38	R383	- 67 237.51	3 628 870.55
L386	- 64 151.86	3 626	980.88	R384	- 67 154.71	3 628 862.87
L387	- 63 333.67	3 626	397.64	R385	- 67 047.69	3 628 853.66
L388	- 63 218.82	3 626	323.77	R386	- 66 889.60	3 628 838.53
L389	- 63 108.33	3 626	276.21	R387	- 66 840.43	3 628 829.11
L390	- 62 992.26	3 626	244.32	R388	- 66 755.99	3 628 802.39
L391	- 62 872.68	3 626	228.12	R389	- 66 701.77	3 628 778.42
L392	- 62 746.79	3 626	232.62	R390	- 66 624.37	3 628 720.37
L393	- 62 744.26	3 626	232.80	R391	- 66 553.93	3 628 673.45
L394	- 62 741.17	3 626	230.64	R392	- 66 486.19	3 628 595.38
L395	- 62 582.71	3 626	244.69	R393	- 66 395.95	3 628 496.09
L396	- 62 563.10	3 626	245.90	R394	- 66 329.99	3 628 423.24
L397	- 61 997.01	3 626	285.13	R395	- 66 300.66	3 628 390.83
L398	- 61 863.77	3 626	292.82	R396	- 66 293.36	3 628 382.66
L399	- 61 861.14	3 626	292.39	R397	- 66 286.46	3 628 375.17
L400	- 61 685.21	3 626	263.13	R398	- 66 279.81	3 628 367.83
L401	- 61 606.97	3 626	243.08	R399	- 66 183.99	3 628 278.45
L402	- 61 476.28	3 626	228.74	R400	- 66 133.66	3 628 243.32
L403	- 61 459.59	3 626	220.56	R401	- 65 695.52	3 628 035.11
L404	- 61 358.40	3 626	132.44	R402	- 65 563.12	3 627 948.66
L405	- 61 291.91	3 626	090.09	R403	- 65 362.14	3 627 805.72
L406	- 61 195.67	3 626	012.53	R404	- 65 191.50	3 627 684.46
L407	- 61 148.86	3 625	968.16	R405	- 64 174.61	3 626 960.82

Vel	20	Van	26	P588/06
Sheet		of		



PADRESERWE KOÖRDINATE / ROAD RESERVE CO-ORDINATES						
LINKERKANT/LEFT HAND SIDE				REGTERKANT/RIGHT HAND SIDE		
	Y	X	WG 27°		Y	X
L408	- 61 108.48	3 625	924.78	R406	- 63 301.77	3 626 339.20
L409	- 61 032.09	3 625	827.13	R407	- 63 233.41	3 626 295.40
L410	- 60 967.30	3 625	722.04	R408	- 63 174.11	3 626 265.77
L411	- 60 916.27	3 625	612.38	R409	- 63 106.88	3 626 239.27
L412	- 60 850.86	3 625	445.97	R410	- 63 028.41	3 626 216.59
L413	- 60 604.32	3 624	837.62	R411	- 62 969.35	3 626 205.37
L414	- 60 313.64	3 624	120.93	R412	- 62 940.40	3 626 202.62
L415	- 60 286.45	3 624	056.64	R413	- 62 830.17	3 626 172.31
L416	- 60 256.72	3 623	998.40	R414	- 62 797.95	3 626 174.49
L417	- 60 252.13	3 623	978.55	R415	- 62 751.69	3 626 186.10
L418	- 60 228.28	3 623	915.33	R416	- 62 660.43	3 626 208.72
L419	- 60 209.08	3 623	863.96	R417	- 62 162.14	3 626 243.49
L420	- 59 899.56	3 623	099.49	R418	- 61 987.86	3 626 255.56
L421	- 59 754.79	3 622	741.91	R419	- 61 810.90	3 626 252.99
L422	- 59 542.86	3 622	218.40	R420	- 61 633.73	3 626 219.32
L423	- 59 495.72	3 622	100.24	R421	- 61 464.76	3 626 156.23
L424	- 59 443.03	3 621	970.13	R422	- 61 309.35	3 626 064.39
L425	- 59 384.61	3 621	830.80	R423	- 61 196.99	3 625 969.31
L426	- 59 046.01	3 620	986.17	R424	- 61 167.02	3 625 940.70
L427	- 59 041.44	3 620	974.66	R425	- 61 057.85	3 625 808.48
L428	- 59 014.79	3 620	908.97	R426	- 60 946.05	3 625 600.71
L429	- 58 885.25	3 620	587.90	R427	- 60 888.73	3 625 462.07
L430	- 58 843.98	3 620	504.08	R428	- 60 620.44	3 624 795.64
L431	- 58 804.14	3 620	448.26	R429	- 60 430.36	3 624 328.94
L432	- 58 467.74	3 620	111.68	R430	- 60 344.88	3 624 117.96
L433	- 58 391.82	3 620	041.93	R431	- 60 227.82	3 623 829.81
L434	- 58 270.95	3 619	919.53	R432	- 60 045.38	3 623 379.37
L435	- 58 210.93	3 619	861.81	R433	- 59 938.66	3 623 116.09
L436	- 58 028.66	3 619	686.54	R434	- 59 778.27	3 622 719.99
L437	- 57 805.82	3 619	465.39	R435	- 59 638.95	3 622 374.08
L438	- 57 765.69	3 619	426.51	R436	- 59 608.37	3 622 296.14
L439	- 57 550.99	3 619	217.12	R437	- 59 569.80	3 622 203.92
L440	- 57 477.28	3 619	152.19	R438	- 59 499.92	3 622 031.12
L441	- 57 399.40	3 619	093.73	R439	- 59 495.32	3 622 019.59
L442	- 57 315.06	3 619	041.12	R440	- 59 470.03	3 621 956.97
L443	- 57 227.53	3 618	996.52	R441	- 59 392.05	3 621 759.40
L444	- 57 162.51	3 618	968.53	R442	- 59 034.99	3 620 877.91
L445	- 57 098.72	3 618	945.53	R443	- 58 913.00	3 620 576.76
L446	- 56 986.95	3 618	912.71	R444	- 58 869.89	3 620 488.86
L447	- 56 818.94	3 618	889.92	R445	- 58 858.70	3 620 471.15
L448	- 56 518.98	3 618	872.57	R446	- 58 849.32	3 620 456.05
L449	- 56 502.84	3 618	871.59	R447	- 58 802.36	3 620 398.10
L450	- 56 143.69	3 618	851.69	R448	- 58 743.80	3 620 339.17
L451	- 56 127.88	3 618	850.43	R449	- 58 588.76	3 620 187.87
L452	- 56 103.81	3 618	849.14	R450	- 58 489.68	3 620 090.85
L453	- 56 018.31	3 618	848.34	R451	- 58 291.33	3 619 897.70
L454	- 55 804.51	3 618	832.15	R452	- 58 208.76	3 619 817.01
L455	- 55 342.61	3 618	806.15	R453	- 58 201.79	3 619 810.16
L456	- 55 147.65	3 618	795.02	R454	- 58 189.88	3 619 798.16
L457	- 55 131.57	3 618	794.27	R455	- 58 052.28	3 619 659.53
L458	- 55 122.66	3 618	793.76	R456	- 57 827.75	3 619 445.05

Vel Sheet	21	Van of	26	P588/06
--------------	----	-----------	----	---------

PADRESERWE KOÖRDINATE / ROAD RESERVE CO-ORDINATES							
LINKERKANT/LEFT HAND SIDE				REGTERKANT/RIGHT HAND SIDE			
	Y	X	WG 27°		Y	X	
L459	- 54 825.83	3 618	776.90	R457	- 57 787.01	3 619	405.30
L460	- 54 532.41	3 618	803.59	R458	- 57 562.17	3 619	186.26
L461	- 54 433.60	3 618	826.10	R459	- 57 505.64	3 619	109.59
L462	- 54 084.27	3 618	910.72	R460	- 57 504.28	3 619	107.74
L463	- 54 023.87	3 618	920.29	R461	- 57 493.16	3 619	092.68
L464	- 53 956.34	3 618	922.08	R462	- 57 469.93	3 619	086.43
L465	- 53 910.60	3 618	925.40	R463	- 57 463.25	3 619	084.63
L466	- 53 798.70	3 618	936.26	R464	- 57 424.93	3 619	059.86
L467	- 53 774.71	3 618	925.20	R465	- 57 359.07	3 619	031.80
L468	- 53 763.52	3 618	923.34	R466	- 57 273.23	3 618	984.77
L469	- 53 660.85	3 618	906.20	R467	- 57 187.22	3 618	945.92
L470	- 53 586.36	3 618	897.64	R468	- 57 123.35	3 618	919.01
L471	- 53 442.77	3 618	907.89	R469	- 57 075.60	3 618	906.07
L472	- 53 406.64	3 618	904.14	R470	- 57 058.71	3 618	900.86
L473	- 53 293.02	3 618	868.62	R471	- 56 821.02	3 618	858.77
L474	- 53 155.43	3 618	858.15	R472	- 56 655.12	3 618	849.53
L475	- 53 143.14	3 618	857.22	R473	- 56 504.48	3 618	841.62
L476	- 53 023.52	3 618	838.65	R474	- 56 129.10	3 618	820.62
L477	- 52 950.19	3 618	824.57	R475	- 56 067.62	3 618	813.17
L478	- 52 826.53	3 618	795.73	R476	- 55 806.36	3 618	802.17
L479	- 52 798.34	3 618	787.21	R477	- 55 378.48	3 618	778.18
L480	- 52 652.62	3 618	744.18	R478	- 55 149.68	3 618	765.35
L481	- 52 560.24	3 618	703.77	R479	- 55 133.77	3 618	764.19
L482	- 52 504.60	3 618	679.27	R480	- 55 122.40	3 618	763.56
L483	- 52 347.13	3 618	619.62	R481	- 54 827.68	3 618	747.13
L484	- 52 219.69	3 618	527.78	R482	- 54 678.15	3 618	738.83
L485	- 52 170.67	3 618	492.90	R483	- 54 434.54	3 618	795.12
L486	- 52 126.49	3 618	457.18	R484	- 54 116.37	3 618	868.34
L487	- 52 031.30	3 618	379.70	R485	- 54 031.67	3 618	881.88
L488	- 51 824.49	3 618	219.34	R486	- 53 961.32	3 618	888.15
L489	- 51 707.76	3 618	137.56	R487	- 53 920.97	3 618	885.61
L490	- 51 684.69	3 618	116.13	R488	- 53 860.13	3 618	885.39
L491	- 51 650.88	3 618	084.67	R489	- 53 683.86	3 618	877.44
L492	- 51 492.78	3 617	962.05	R490	- 53 639.03	3 618	872.87
L493	- 51 407.82	3 617	898.96	R491	- 53 620.58	3 618	870.99
L494	- 51 364.48	3 617	866.42	R492	- 53 584.47	3 618	867.39
L495	- 51 239.82	3 617	766.08	R493	- 53 146.98	3 618	822.58
L496	- 50 876.38	3 617	484.15	R494	- 53 113.49	3 618	818.23
L497	- 50 798.76	3 617	426.32	R495	- 53 028.81	3 618	807.22
L498	- 50 674.72	3 617	330.51	R496	- 52 966.82	3 618	797.83
L499	- 50 653.66	3 617	314.24	R497	- 52 929.97	3 618	788.98
L500	- 50 575.69	3 617	251.39	R498	- 52 757.30	3 618	743.31
L501	- 50 497.33	3 617	188.99	R499	- 52 664.10	3 618	712.38
L502	- 50 390.71	3 617	097.08	R500	- 52 570.43	3 618	674.62
L503	- 50 288.71	3 617	000.26	R501	- 52 535.21	3 618	660.29
L504	- 50 191.05	3 616	898.81	R502	- 52 449.87	3 618	609.63
L505	- 50 135.59	3 616	841.07	R503	- 52 283.34	3 618	507.01
L506	- 50 069.24	3 616	780.15	R504	- 52 132.92	3 618	409.32
L507	- 50 032.97	3 616	737.86	R505	- 51 969.23	3 618	293.80
L508	- 49 981.02	3 616	668.82	R506	- 51 842.83	3 618	195.58
L509	- 49 961.72	3 616	647.64	R507	- 51 760.09	3 618	122.63

Vel  
Sheet

22

Van

26

of

P588/06

PADRESERWE KOÖRDINATE / ROAD RESERVE CO-ORDINATES								
LINKERKANT/LEFT HAND SIDE								
	Y	X	WG 27°		Y	X		
L510	- 49 885.18	3 616	564.04	R508	- 51 713.46	3 618	090.73	
L511	- 49 875.93	3 616	554.47	R509	- 51 669.23	3 618	060.93	
L512	- 49 837.15	3 616	517.27	R510	- 51 602.50	3 618	009.69	
L513	- 49 786.28	3 616	455.87	R511	- 51 509.00	3 617	937.16	
L514	- 49 610.75	3 616	263.63	R512	- 51 422.57	3 617	865.51	
L515	- 49 594.99	3 616	246.85	R513	- 51 387.62	3 617	836.38	
L516	- 49 494.52	3 616	138.90	R514	- 51 258.09	3 617	742.17	
L517	- 49 474.61	3 616	117.61	R515	- 50 800.23	3 617	387.36	
L518	- 49 431.86	3 616	075.27	R516	- 50 696.87	3 617	307.44	
L519	- 49 409.30	3 616	047.22	R517	- 50 594.29	3 617	227.72	
L520	- 49 283.99	3 615	949.49	R518	- 50 516.51	3 617	165.87	
L521	- 49 272.51	3 615	936.32	R519	- 50 411.01	3 617	074.81	
L522	- 49 264.79	3 615	927.46	R520	- 50 309.73	3 616	978.95	
L523	- 49 211.16	3 615	818.86	R521	- 50 213.13	3 616	878.60	
L524	- 49 150.32	3 615	734.71	R522	- 50 158.73	3 616	818.81	
L525	- 49 115.44	3 615	684.95	R523	- 50 154.76	3 616	809.98	
L526	- 49 105.02	3 615	665.99	R524	- 50 084.01	3 616	730.07	
L527	- 49 048.20	3 615	561.12	R525	- 50 072.62	3 616	722.81	
L528	- 49 005.96	3 615	483.77	R526	- 50 038.01	3 616	679.05	
L529	- 48 406.70	3 614	385.10	R527	- 49 983.74	3 616	627.37	
L530	- 48 306.71	3 614	223.77	R528	- 49 905.48	3 616	541.62	
L531	- 48 224.15	3 614	051.57	R529	- 49 808.37	3 616	435.41	
L532	- 48 114.38	3 613	849.51	R530	- 49 683.52	3 616	298.82	
L533	- 48 079.25	3 613	790.07	R531	- 49 633.01	3 616	243.52	
L534	- 48 039.70	3 613	734.03	R532	- 49 596.39	3 616	203.42	
L535	- 47 994.51	3 613	682.28	R533	- 49 380.54	3 615	967.04	
L536	- 47 944.54	3 613	635.78	R534	- 49 322.54	3 615	903.97	
L537	- 47 890.09	3 613	594.45	R535	- 49 276.39	3 615	850.59	
L538	- 47 832.41	3 613	558.10	R536	- 49 251.22	3 615	821.48	
L539	- 47 774.75	3 613	520.76	R537	- 49 226.41	3 615	789.44	
L540	- 47 715.45	3 613	483.40	R538	- 49 209.30	3 615	766.42	
L541	- 47 569.64	3 613	405.48	R539	- 49 170.04	3 615	709.77	
L542	- 47 565.75	3 613	403.43	R540	- 49 132.72	3 615	650.90	
L543	- 47 554.27	3 613	397.66	R541	- 49 096.96	3 615	586.85	
L544	- 47 502.96	3 613	372.14	R542	- 49 084.55	3 615	565.32	
L545	- 47 459.57	3 613	346.50	R543	- 49 069.85	3 615	538.15	
L546	- 47 390.51	3 613	314.67	R544	- 49 050.51	3 615	502.09	
L547	- 47 358.44	3 613	294.49	R545	- 49 042.66	3 615	478.47	
L548	- 47 229.22	3 613	227.88	R546	- 48 986.66	3 615	366.25	
L549	- 46 765.79	3 613	045.47	R547	- 48 946.28	3 615	290.24	
L550	- 46 700.19	3 613	020.22	R548	- 48 940.34	3 615	270.84	
L551	- 46 634.72	3 612	993.60	R549	- 48 806.19	3 615	016.38	
L552	- 46 577.81	3 612	971.24	R550	- 48 680.44	3 614	779.24	
L553	- 46 556.40	3 612	969.65	R551	- 48 564.69	3 614	583.87	
L554	- 46 416.55	3 612	893.45	R552	- 48 452.33	3 614	406.38	
L555	- 46 335.19	3 612	848.17	R553	- 48 345.96	3 614	211.02	
L556	- 46 328.59	3 612	847.08	R554	- 48 300.22	3 614	126.74	
L557	- 46 255.21	3 612	816.03	R555	- 48 219.12	3 613	978.42	
L558	- 46 216.87	3 612	788.14	R556	- 48 203.34	3 613	949.70	
L559	- 46 207.45	3 612	782.26	R557	- 48 119.00	3 613	774.31	
L560	- 46 178.37	3 612	762.63	R558	- 48 022.77	3 613	616.12	
				Vel	23	Van	26	P588/06
				Sheet		of		

PADRESERWE KOÖRDINATE / ROAD RESERVE CO-ORDINATES					
LINKERKANT/LEFT HAND SIDE			REGTERKANT/RIGHT HAND SIDE		
	Y	X	WG 27°		X
L561	- 46 150.50	3 612	744.55	R559	- 47 800.81 3 613 456.56
L562	- 45 991.56	3 612	629.48	R560	- 47 772.30 3 613 436.07
L563	- 45 842.42	3 612	522.56	R561	- 47 593.43 3 613 381.55
L564	- 45 721.65	3 612	450.73	R562	- 47 589.26 3 613 380.28
L565	- 45 674.00	3 612	414.83	R563	- 47 528.98 3 613 349.22
L566	- 45 575.85	3 612	343.44	R564	- 47 497.52 3 613 317.95
L567	- 45 468.85	3 612	249.82	R565	- 47 421.11 3 613 292.01
L568	- 45 455.85	3 612	236.89	R566	- 47 305.98 3 613 230.78
L569	- 45 400.24	3 612	181.59	R567	- 47 272.16 3 613 210.42
L570	- 45 371.67	3 612	148.02	R568	- 47 173.59 3 613 161.54
L571	- 45 356.20	3 612	128.65	R569	- 46 997.48 3 613 051.47
L572	- 45 328.13	3 612	093.25	R570	- 46 910.49 3 613 026.56
L573	- 45 308.08	3 612	067.78	R571	- 46 827.89 3 613 004.66
L574	- 45 226.08	3 611	927.96	R572	- 46 803.91 3 612 998.17
L575	- 45 098.09	3 611	707.29	R573	- 46 758.17 3 612 986.17
L576	- 44 995.11	3 611	593.45	R574	- 46 670.60 3 612 962.13
L577	- 44 985.78	3 611	575.44	R575	- 46 427.44 3 612 842.84
L578	- 44 939.90	3 611	434.51	R576	- 46 285.81 3 612 751.72
L579	- 44 789.66	3 611	175.08	R577	- 46 246.94 3 612 728.76
L580	- 44 775.20	3 611	150.25	R578	- 46 182.65 3 612 686.29
L581	- 44 756.69	3 611	118.29	R579	- 46 182.75 3 612 677.84
L582	- 44 655.26	3 610	943.21	R580	- 46 171.69 3 612 675.79
L583	- 44 648.55	3 610	931.64	R581	- 46 102.92 3 612 634.77
L584	- 44 628.86	3 610	897.65	R582	- 46 052.08 3 612 607.84
L585	- 44 526.74	3 610	721.38	R583	- 46 036.20 3 612 589.48
L586	- 44 508.31	3 610	689.90	R584	- 46 013.94 3 612 550.67
L587	- 44 344.17	3 610	407.67	R585	- 45 975.35 3 612 535.60
L588	- 44 338.16	3 610	397.20	R586	- 45 933.78 3 612 543.54
L589	- 44 299.03	3 610	341.02	R587	- 45 875.68 3 612 507.56
L590	- 44 237.68	3 610	277.27	R588	- 45 787.21 3 612 452.59
L591	- 44 204.23	3 610	242.50	R589	- 45 720.96 3 612 403.87
L592	- 44 190.99	3 610	228.06	R590	- 45 682.35 3 612 384.05
L593	- 44 176.77	3 610	212.53	R591	- 45 634.13 3 612 349.41
L594	- 43 998.70	3 610	048.54	R592	- 45 610.29 3 612 329.83
L595	- 43 974.16	3 610	025.94	R593	- 45 597.89 3 612 319.81
L596	- 43 823.49	3 609	887.19	R594	- 45 580.83 3 612 305.94
L597	- 43 587.87	3 609	671.46	R595	- 45 515.40 3 612 245.33
L598	- 43 391.68	3 609	488.07	R596	- 45 464.36 3 612 189.65
L599	- 43 262.61	3 609	376.42	R597	- 45 395.75 3 612 104.98
L600	- 43 110.72	3 609	262.82	R598	- 45 366.76 3 612 069.21
L601	- 43 071.28	3 609	233.61	R599	- 45 309.68 3 611 992.84
L602	- 42 853.87	3 609	092.63	R600	- 45 231.98 3 611 878.26
L603	- 42 768.85	3 609	041.04	R601	- 45 091.44 3 611 635.98
L604	- 42 566.85	3 608	910.20	R602	- 45 083.33 3 611 622.08
L605	- 42 469.12	3 608	842.92	R603	- 45 050.21 3 611 564.49
L606	- 42 368.98	3 608	782.95	R604	- 45 047.48 3 611 560.24
L607	- 42 366.40	3 608	781.23	R605	- 44 947.92 3 611 388.47
L608	- 42 302.60	3 608	738.52	R606	- 44 861.16 3 611 238.96
L609	- 42 285.78	3 608	727.26	R607	- 44 800.54 3 611 134.16
L610	- 42 224.10	3 608	685.99	R608	- 44 780.92 3 611 095.94
L611	- 42 215.14	3 608	679.99	R609	- 44 740.29 3 611 016.82

Vel	24	Van	26	P588/06
Sheet		of		

PADRESERWE KOÖRDINATE / ROAD RESERVE CO-ORDINATES						
LINKERKANT/LEFT HAND SIDE				REGTERKANT/RIGHT HAND SIDE		
	Y	X	WG 27°		Y	X
L612	- 42 167.03	3 608	647.79	R610	- 44 737.11	3 611 010.52
L613	- 42 137.03	3 608	628.24	R611	- 44 708.74	3 610 956.16
L614	- 42 128.69	3 608	623.51	R612	- 44 676.65	3 610 902.60
L615	- 42 042.24	3 608	576.95	R613	- 44 663.44	3 610 901.61
L616	- 41 880.90	3 608	466.09	R614	- 44 661.90	3 610 901.49
L617	- 41 778.27	3 608	397.52	R615	- 44 656.66	3 610 889.55
L618	- 41 610.55	3 608	287.33	R616	- 44 637.18	3 610 845.18
L619	- 41 545.98	3 608	240.74	R617	- 44 599.69	3 610 788.07
L620	- 41 466.20	3 608	181.54	R618	- 44 539.61	3 610 684.44
L621	- 41 372.95	3 608	102.79	R619	- 44 479.18	3 610 580.25
L622	- 41 237.11	3 607	968.06	R620	- 44 426.27	3 610 472.84
L623	- 41 222.25	3 607	953.13	R621	- 44 365.12	3 610 380.73
L624	- 41 219.52	3 607	941.57	R622	- 44 322.89	3 610 323.14
L625	- 41 128.07	3 607	834.03	R623	- 44 279.01	3 610 267.29
L626	- 41 056.10	3 607	736.87	R624	- 44 226.82	3 610 217.78
L627	- 40 976.20	3 607	621.20	R625	- 44 208.64	3 610 200.59
L628	- 40 931.53	3 607	556.52	R626	- 44 197.85	3 610 190.39
L629	- 40 862.95	3 607	457.61	R627	- 44 124.35	3 610 122.43
L630	- 40 860.11	3 607	453.33	R628	- 44 099.17	3 610 090.95
L631	- 40 720.34	3 607	243.02	R629	- 44 045.70	3 610 044.03
L632	- 40 703.93	3 607	222.74	R630	- 44 019.98	3 610 021.46
L633	- 40 679.36	3 607	192.36	R631	- 43 918.83	3 609 932.69
L634	- 40 635.15	3 607	128.05	R632	- 43 906.82	3 609 922.12
L635	- 40 613.53	3 607	095.25	R633	- 43 818.19	3 609 840.37
L636	- 40 511.02	3 606	947.14	R634	- 43 814.30	3 609 836.42
L637	- 40 492.28	3 606	922.71	R635	- 43 786.87	3 609 808.61
L638	- 40 463.56	3 606	880.88	R636	- 43 728.57	3 609 754.54
L639	- 40 431.15	3 606	833.67	R637	- 43 697.91	3 609 729.37
L640	- 40 407.72	3 606	799.55	R638	- 43 607.67	3 609 646.10
L641	- 40 400.48	3 606	780.36	R639	- 43 539.93	3 609 563.24
L642	- 40 265.33	3 606	578.35	R640	- 43 417.35	3 609 470.58
L643	- 40 206.60	3 606	525.16	R641	- 43 375.84	3 609 431.44
L644	- 40 157.15	3 606	480.37	R642	- 43 286.70	3 609 347.28
L645	- 40 152.87	3 606	476.50	R643	- 43 222.99	3 609 297.15
L646	- 40 133.81	3 606	452.14	R644	- 43 154.32	3 609 246.33
L647	- 40 086.03	3 606	351.75	R645	- 43 141.63	3 609 237.09
L648	- 40 006.69	3 606	237.09	R646	- 43 091.84	3 609 210.95
L649	- 39 972.62	3 606	149.45	R647	- 43 089.29	3 609 209.60
L650	- 39 959.67	3 606	128.03	R648	- 42 820.56	3 609 035.47
L651	- 39 944.44	3 606	074.15	R649	- 42 787.69	3 609 010.55
L652	- 39 939.45	3 606	040.87	R650	- 42 638.16	3 608 913.64
L653	- 39 937.20	3 606	014.15	R651	- 42 569.30	3 608 872.55
L654	- 39 936.59	3 605	982.34	R652	- 42 482.71	3 608 816.45
L655	- 39 938.71	3 605	953.41	R653	- 42 467.18	3 608 806.56
L656	- 39 940.98	3 605	929.01	R654	- 42 383.86	3 608 742.62
L657	- 39 954.89	3 605	930.76	R655	- 42 319.70	3 608 693.38
L658	- 39 960.58	3 605	894.93	R656	- 42 313.89	3 608 690.02
L659	- 39 971.52	3 605	847.43	R657	- 42 296.89	3 608 680.19
L660	- 39 983.97	3 605	808.22	R658	- 42 242.93	3 608 649.00
L661	- 39 995.69	3 605	776.63	R659	- 42 234.09	3 608 643.89
L662	- 40 019.24	3 605	725.71	R660	- 42 226.81	3 608 639.68

Vel  
Sheet

25

Van  
of

26

P588/06





Printed by and obtainable from the Government Printer, Bosman Street, Private Bag X85, Pretoria, 0001  
Publications: Tel: (012) 334-4508, 334-4509, 334-4510  
Advertisements: Tel: (012) 334-4673, 334-4674, 334-4504  
Subscriptions: Tel: (012) 334-4735, 334-4736, 334-4737  
Cape Town Branch: Tel: (021) 465-7531

Gedruk deur en verkrygbaar by die Staatsdrukker, Bosmanstraat, Privaatsak X85, Pretoria, 0001  
Publikasies: Tel: (012) 334-4508, 334-4509, 334-4510  
Advertensies: Tel: (012) 334-4673, 334-4674, 334-4504  
Subskripsies: Tel: (012) 334-4735, 334-4736, 334-4737  
Kaapstad-tak: Tel: (021) 465-7531