



Government Gazette Staatskoerant

REPUBLIC OF SOUTH AFRICA
REPUBLIEK VAN SUID-AFRIKA

Vol. 574

Pretoria, 12 April 2013

No. 36367

N.B. The Government Printing Works will not be held responsible for the quality of "Hard Copies" or "Electronic Files" submitted for publication purposes



AIDS HELPLINE: 0800-0123-22 Prevention is the cure

IMPORTANT NOTICE

The Government Printing Works will not be held responsible for faxed documents not received due to errors on the fax machine or faxes received which are unclear or incomplete. Please be advised that an "OK" slip, received from a fax machine, will not be accepted as proof that documents were received by the GPW for printing. If documents are faxed to the GPW it will be the sender's responsibility to phone and confirm that the documents were received in good order.

Furthermore the Government Printing Works will also not be held responsible for cancellations and amendments which have not been done on original documents received from clients.

CONTENTS**INHOUD**

<i>No.</i>	<i>Page No.</i>	<i>Gazette No.</i>	<i>No.</i>	<i>Bladsy No.</i>	<i>Koerant No.</i>
GOVERNMENT NOTICE			GOEWERMENTSKENNISGEWINGS		
Transport, Department of			Vervoer, Departement van		
<i>Government Notice</i>			<i>Goewermentskennisgewing</i>		
284			284		
South African National Roads Agency Limited and the National Roads Act (7/1998): Declaration Amendment of National Road N14 Section 10	3	36367	Wet op die Suid-Afrikaanse Nasionale Padagentskap Beperk en op Nasionale Paaie (7/1998): Verklaring wysiging van Nasionale Pad N14 Seksie 10	4	36367

GOVERNMENT NOTICE

DEPARTMENT OF TRANSPORT

No. 284

12 April 2013

THE SOUTH AFRICAN NATIONAL ROADS AGENCY SOC LIMITED

Registration No: 98/09584/06

DECLARATION AMENDMENT OF NATIONAL ROAD N14 SECTION 10

AMENDMENT OF DECLARATION NO. 189 OF 2009

By virtue of Section 40(1)(b) of the South African National Roads Agency Limited and the National Roads Act, 1998 (Act No. 7 of 1998), I hereby amend Declaration No. 189 of 2009, by substituting sheets 1 to 9 of Plan No. P717/08, with the subjoined sheets 1 to 9 of Plan No. P811/12.

(National Road N14 Section 10: Delareyville – Sannieshof)



MINISTER OF TRANSPORT

GOEWERMENTSKENNISGEWING

DEPARTEMENT VAN VERVOER

No. 284

12 April 2013

DIE SUID-AFRIKAANSE NASIONALE PADAGENTSKAP MSB BEPERK

Registrasie No: 98/09584/06

VERKLARING WYSIGING VAN NASIONALE PAD N14 SEKSIE 10

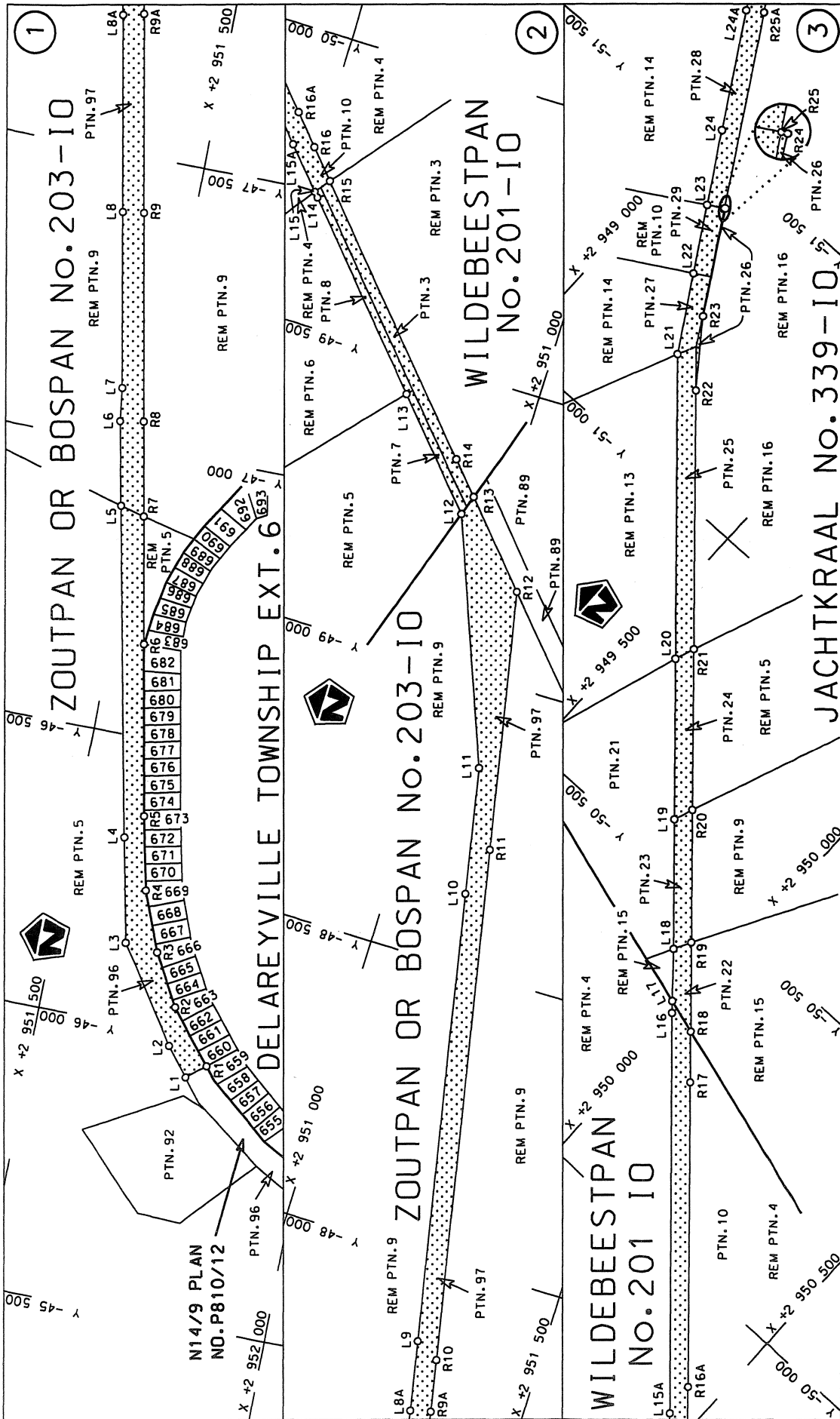
WYSIGING VAN VERKLARING NO. 189 VAN 2009

Kragtens Artikel 40(1)(b) van die Wet op die Suid-Afrikaanse Nasionale Padagentskap Beperk en op Nasionale Paaie, 1998 (Wet no. 7 van 1998), wysig ek hiermee Verklaring no. 189 van 2009, deur velle 1 tot 9 van Plan no. P717/08, te vervang met meegaande velle 1 tot 9 van Plan no. P811/12.

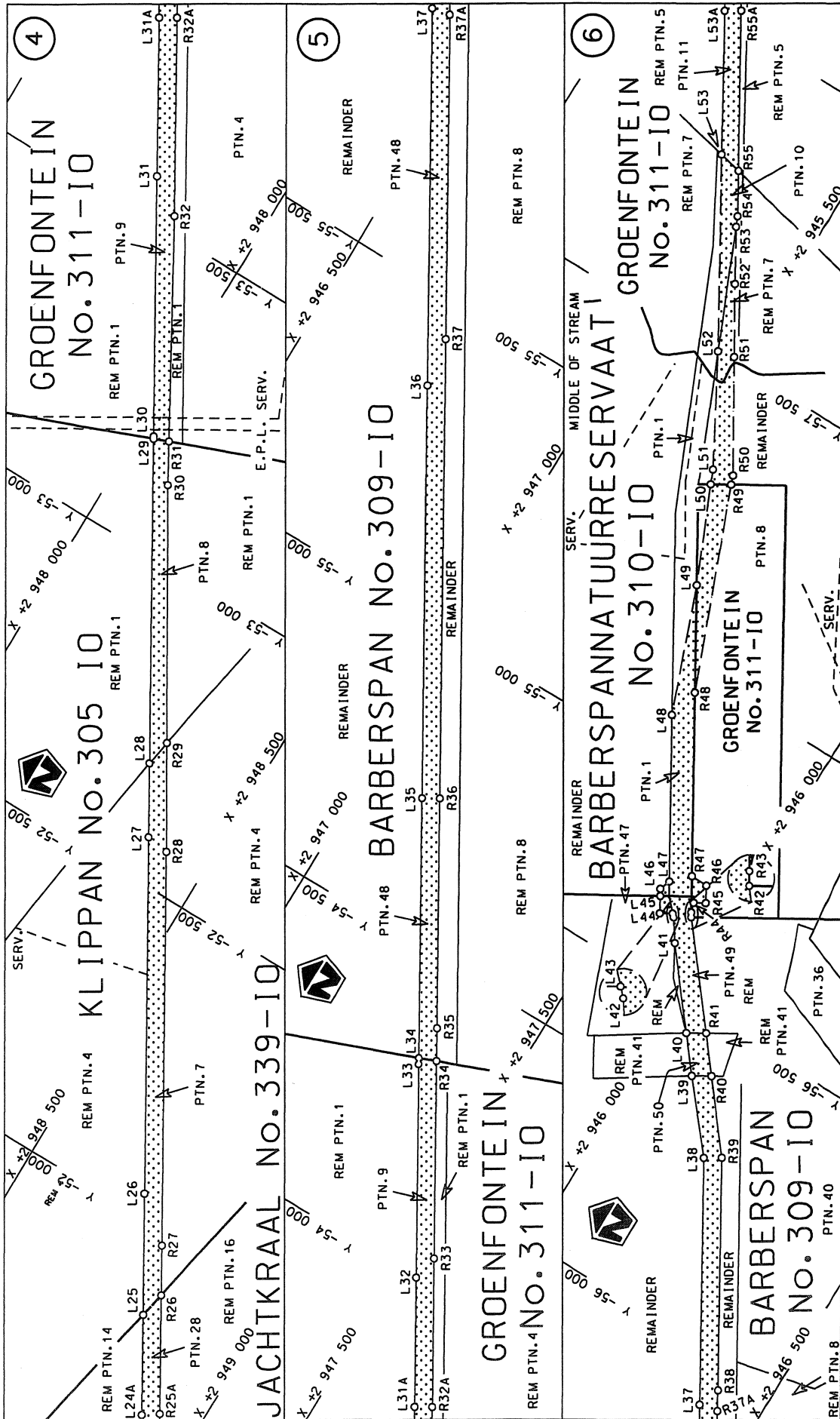
(Nasionale Pad N14 Seksie 10: Delareyville – Sannieshof)



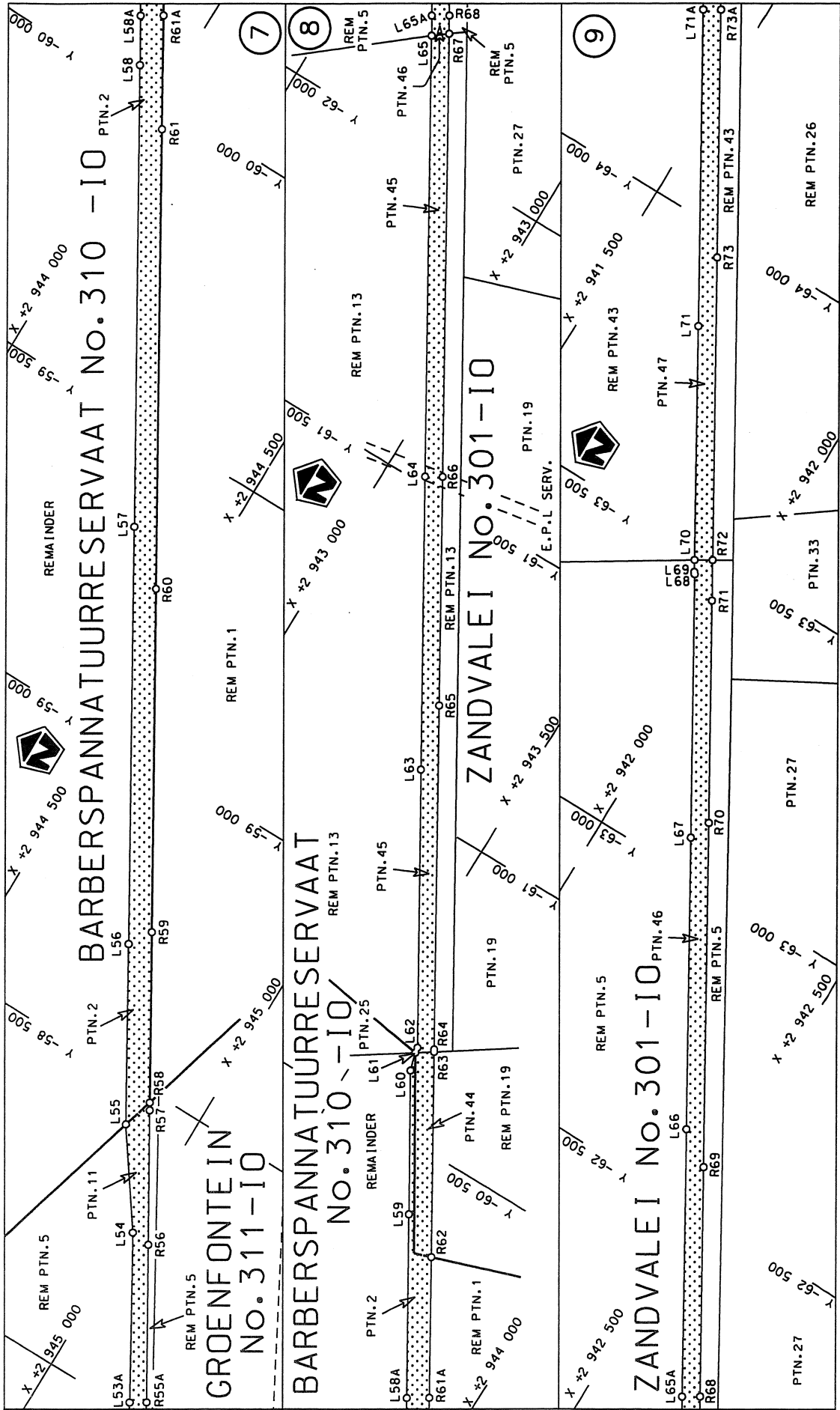
MINISTER VAN VERVOER



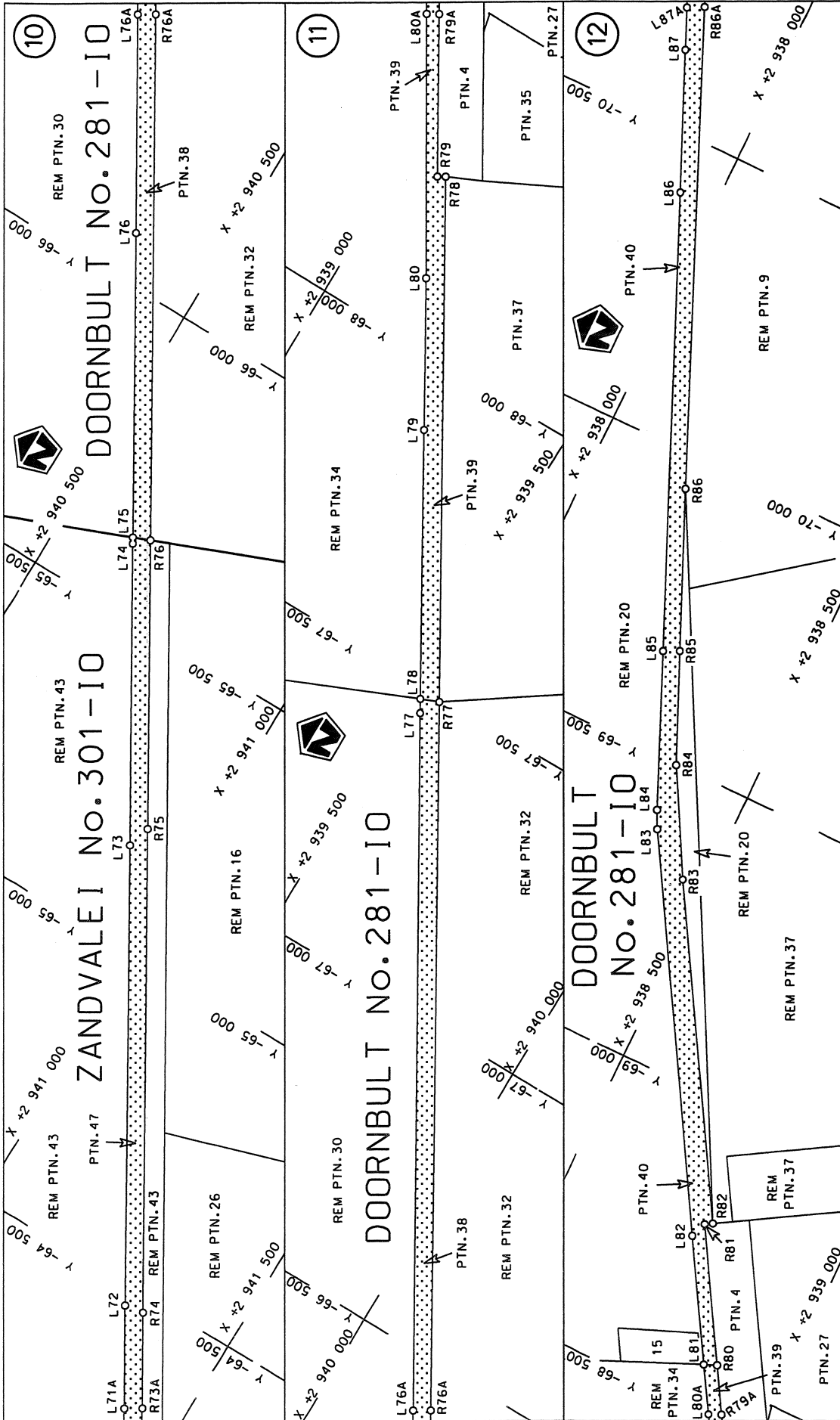
<p>Die Suid Afrikaanse Nasionale Padagentskap Beperk The South African National Roads Agency Limited</p>	<p>Die figuur getoon The figure shown</p>	<p>steldie padreserwe voor van 'n gedeelte represents the road reserve of a portion van Nasionale Roete N14 of National Route</p>	<p>Vel Sheet 1 of 9</p>
		<p>10</p>	<p>Plan P811/12</p>

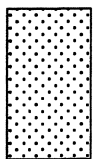


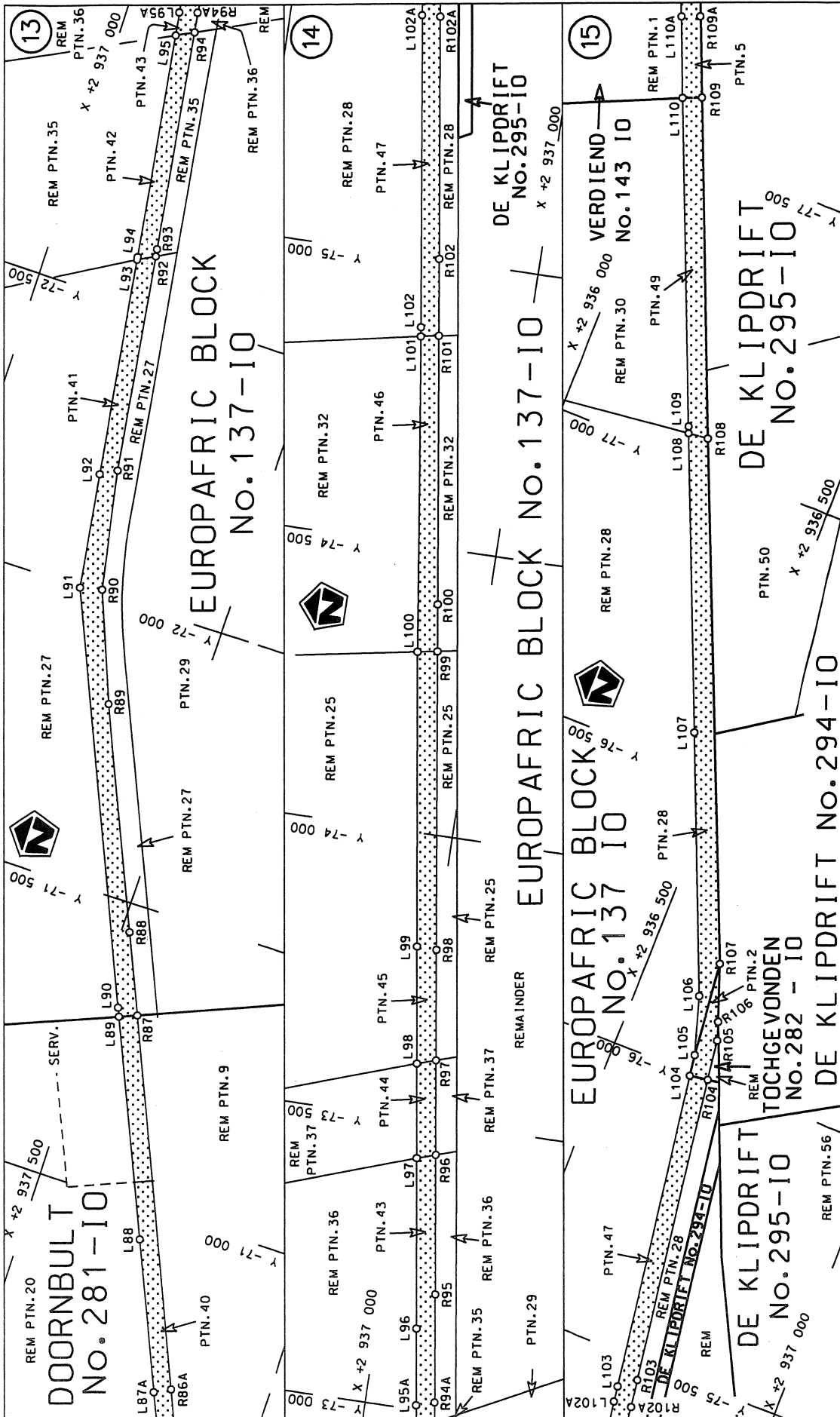
<p>Die Suid Afrikaanse Nasionale Padagentskap Beperk The South African National Roads Agency Limited</p>	<p>Die figuur getoon The figure shown</p>	<p>steldie podreserwe voor van 'n gedeelte represents the road reserve of a portion van Nasionale Roete N14 of National Route</p>
<p>Vel Sheet 2 of 9</p>	<p>Plan 10</p>	<p>Seksie N14 Section</p>
<p>Plan P811/12</p>		

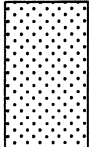


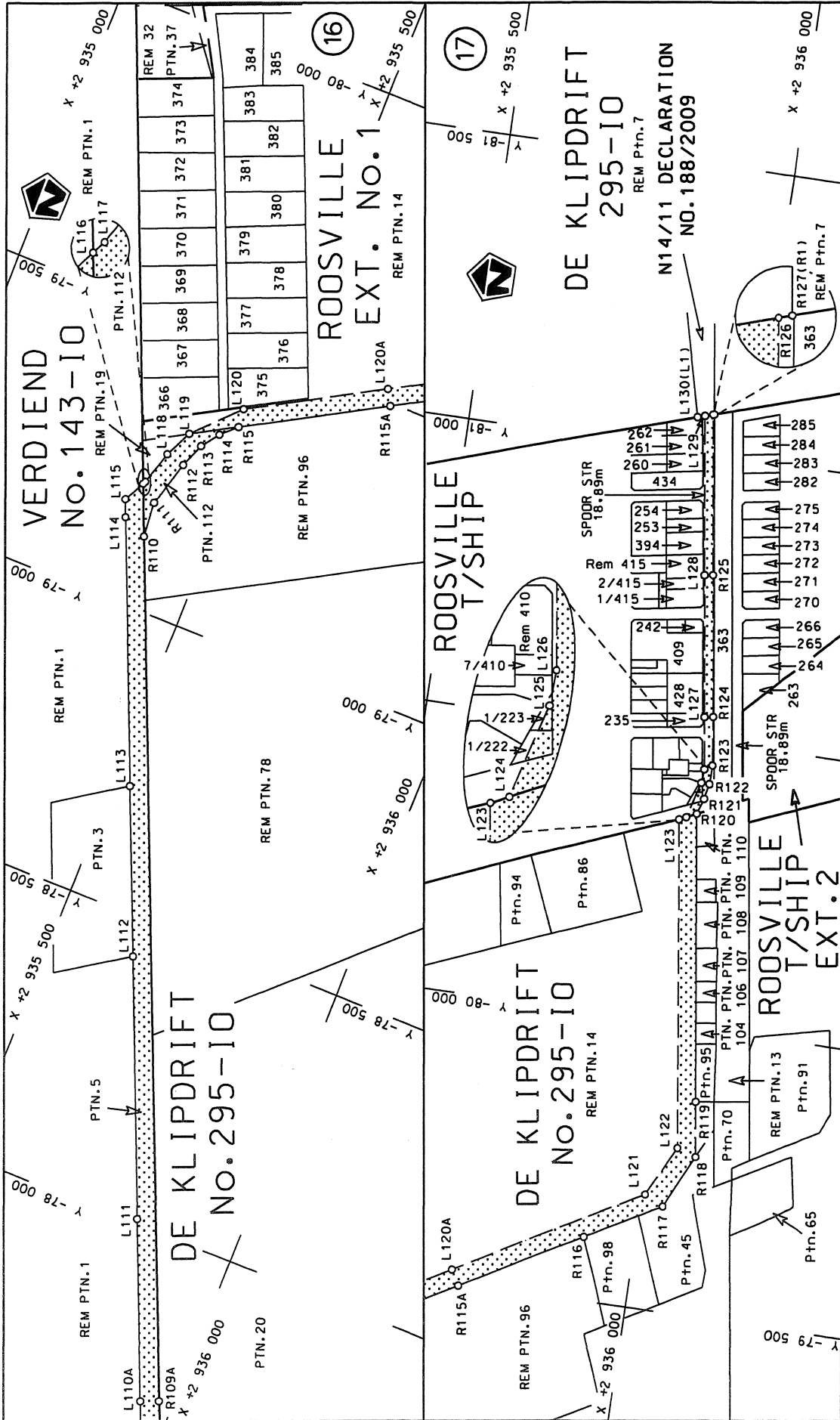
<p>Die Suid Afrikaanse Nasionale Padagentskap Beperk The South African National Roads Agency Limited</p>	<p>Die figuur getoon The figure shown</p>	<p>stel die padreserwe voor van 'n gedeelte represents the road reserve of a portion van Nasionale Roete N14 of National Route</p>	<p>Vel Sheet 3 of 9</p>
		<p>10 Seksie Section</p>	<p>Plan P811/12</p>



<p>Die Suid Afrikaanse Nasionale Padagentskap Beperk The South African National Roads Agency Limited</p>	<p>Die figuur getoon The figure shown</p>	<p>stelde padreserwe voor van 'n gedeelte represents the road reserve of a portion van Nasionale Roete N14 of National Route</p>	<p>Vel Sheet 4 of 9</p>
		<p>Plan P811/12</p>	<p>Section 10</p>



Die Suid Afrikaanse Nasionale Padagentskap Beperk The South African National Roads Agency Limited	Die figuur getoon The figure shown		stelt die padreserwe voor van 'n gedeelte represents the road reserve of a portion van Nasionale Roete N14 of National Route	
			Seksie Section	10
			Vel Sheet	van of
			Plan	P811/12



<p>Die Suid Afrikaanse Nasionale Padagentskap Beperk The South African National Roads Agency Limited</p>	<p>Die figuur getoon The figure shown</p>	<p>stel die padreserwe voor van 'n gedeelte represents the road reserve of a portion van Nasionale Roete N14 of National Route</p>	<p>Vel Sheet 6 van 9 Plan P811/12</p>
<p>10</p>		<p>Seksie Section</p>	<p>10</p>

PADRESERWE KOÖRDINATE / ROAD RESERVE CO-ORDINATES									
LINKERKANT/LEFT HAND SIDE					REGTERKANT/RIGHT HAND SIDE				
	Y	X	WG 25°		Y	X			
L1	-45	927.96	2 951 776.07	R1	-45	954.35	2 951 808.49		
L2	-45	977.19	2 951 736.49	R2	-46	045.92	2 951 733.94		
L3	-46	140.34	2 951 627.51	R3	-46	134.43	2 951 684.06		
L4	-46	322.06	2 951 589.34	R4	-46	236.98	2 951 643.98		
L5	-46	893.68	2 951 470.79	R5	-46	364.70	2 951 615.64		
L6	-47	038.85	2 951 440.68	R6	-46	661.89	2 951 556.90		
L7	-47	096.88	2 951 433.03	R7	-46	882.48	2 951 513.23		
L8	-47	398.53	2 951 373.93	R8	-47	045.67	2 951 480.93		
L9	-47	854.71	2 951 284.31	R9	-47	403.77	2 951 410.29		
L10	-48	627.94	2 951 133.24	R10	-47	832.71	2 951 325.51		
L11	-48	846.04	2 951 090.67	R11	-48	714.56	2 951 151.38		
L12	-49	264.82	2 950 929.06	R12	-49	162.23	2 951 062.94		
L13	-49	437.75	2 950 774.97	R13	-49	299.45	2 950 940.62		
L14	-49	723.20	2 950 520.62	R14	-49	353.71	2 950 892.23		
L15	-49	728.20	2 950 516.13	R15	-49	753.57	2 950 535.69		
L16	-50	317.12	2 949 987.77	R16	-49	802.13	2 950 492.39		
L17	-50	332.97	2 949 974.14	R17	-50	248.58	2 950 093.75		
L18	-50	402.35	2 949 914.46	R18	-50	315.15	2 950 034.37		
L19	-50	571.71	2 949 763.01	R19	-50	431.91	2 949 930.21		
L20	-50	782.53	2 949 574.48	R20	-50	605.58	2 949 775.29		
L21	-51	181.23	2 949 217.52	R21	-50	816.84	2 949 586.84		
L22	-51	304.19	2 949 143.56	R22	-51	156.06	2 949 284.26		
L23	-51	408.69	2 949 080.69	R23	-51	260.14	2 949 206.02		
L24	-51	522.16	2 949 012.43	R24	-51	425.52	2 949 108.84		
L25	-51	856.01	2 948 813.94	R25	-51	424.53	2 949 107.10		
L26	-52	037.61	2 948 705.96	R26	-51	902.02	2 948 822.99		
L27	-52	575.37	2 948 385.80	R27	-51	976.32	2 948 778.78		
L28	-52	687.09	2 948 319.32	R28	-52	569.67	2 948 425.73		
L29	-53	177.77	2 948 027.35	R29	-52	733.28	2 948 326.55		
L30	-53	181.47	2 948 025.14	R30	-53	121.32	2 948 091.32		
L31	-53	571.63	2 947 792.88	R31	-53	187.69	2 948 052.85		
L32	-54	003.60	2 947 535.87	R32	-53	528.21	2 947 855.45		
L33	-54	330.93	2 947 340.94	R33	-54	048.46	2 947 545.78		
L34	-54	333.87	2 947 339.19	R34	-54	345.47	2 947 369.00		
L35	-54	725.66	2 947 106.12	R35	-54	394.88	2 947 339.60		
L36	-55	349.13	2 946 735.45	R36	-54	741.43	2 947 133.29		
L37	-55	914.24	2 946 399.15	R37	-55	434.91	2 946 720.91		
L38	-56	284.66	2 946 178.48	R38	-55	951.96	2 946 413.06		
L39	-56	396.35	2 946 085.11	R39	-56	301.37	2 946 205.18		
L40	-56	455.00	2 946 037.45	R40	-56	413.77	2 946 114.41		
L41	-56	578.57	2 945 937.05	R41	-56	472.54	2 946 066.95		
L42	-56	615.65	2 945 911.67	R42	-56	632.31	2 945 937.94		
L43	-56	620.77	2 945 906.75	R43	-56	639.75	2 945 933.49		
L44	-56	609.08	2 945 887.03	R44	-56	656.24	2 945 928.22		
L45	-56	635.29	2 945 871.51	R45	-56	666.54	2 945 946.20		
L46	-56	645.99	2 945 865.18	R46	-56	693.11	2 945 930.98		
L47	-56	665.22	2 945 871.96	R47	-56	694.34	2 945 900.93		
L48	-56	916.70	2 945 722.33	R48	-56	971.51	2 945 735.99		
L49	-57	133.92	2 945 639.34	R49	-57	315.79	2 945 597.85		
L50	-57	297.34	2 945 566.81	R50	-57	330.85	2 945 591.81		
L51	-57	321.49	2 945 556.09	R51	-57	508.37	2 945 484.60		

Vel	7	Van	9
Sheet		of	

P811/12

PADRESERWE KOÖRDINATE / ROAD RESERVE CO-ORDINATES									
LINKERKANT/LEFT HAND SIDE				REGTERKANT/RIGHT HAND SIDE					
				WG 25°	Y	X			
L52	-57	501.99	2 945	455.16	R52	-57	617.77	2 945	418.53
L53	-57	797.12	2 945	279.69	R53	-57	703.47	2 945	367.85
L54	-58	271.23	2 945	001.36	R54	-57	720.35	2 945	360.54
L55	-58	428.06	2 944	891.89	R55	-57	788.21	2 945	320.19
L56	-58	702.55	2 944	729.82	R56	-58	266.63	2 945	035.50
L57	-59	338.54	2 944	352.13	R57	-58	470.39	2 944	914.20
L58	-60	035.82	2 943	936.14	R58	-58	482.10	2 944	907.23
L59	-60	387.78	2 943	725.66	R59	-58	741.19	2 944	753.03
L60	-60	605.50	2 943	595.42	R60	-59	263.95	2 944	441.93
L61	-60	636.77	2 943	586.02	R61	-59	960.14	2 944	027.77
L62	-60	646.29	2 943	584.58	R62	-60	344.21	2 943	799.19
L63	-61	068.59	2 943	332.38	R63	-60	655.49	2 943	613.93
L64	-61	514.70	2 943	066.77	R64	-60	659.33	2 943	611.64
L65	-62	181.06	2 942	670.50	R65	-61	182.43	2 943	300.69
L66	-62	616.16	2 942	412.21	R66	-61	530.57	2 943	093.68
L67	-63	059.22	2 942	149.10	R67	-62	200.30	2 942	695.50
L68	-63	460.31	2 941	910.50	R68	-62	227.77	2 942	679.17
L69	-63	463.53	2 941	907.71	R69	-62	575.01	2 942	472.56
L70	-63	481.81	2 941	896.87	R70	-63	097.47	2 942	161.88
L71	-63	836.71	2 941	686.32	R71	-63	435.77	2 941	960.41
L72	-64	468.70	2 941	310.21	R72	-63	497.69	2 941	923.60
L73	-65	161.15	2 940	899.29	R73	-63	956.31	2 941	650.89
L74	-65	621.21	2 940	625.56	R74	-64	473.85	2 941	343.06
L75	-65	625.67	2 940	622.91	R75	-65	201.48	2 940	910.63
L76	-66	082.84	2 940	351.30	R76	-65	637.12	2 940	651.56
L77	-67	456.87	2 939	530.83	R77	-67	490.95	2 939	549.53
L78	-67	478.32	2 939	518.12	R78	-68	280.19	2 939	080.36
L79	-67	883.70	2 939	278.06	R79	-68	272.64	2 939	067.64
L80	-68	111.50	2 939	142.96	R80	-68	584.08	2 938	882.37
L81	-68	575.26	2 938	860.61	R81	-68	796.53	2 938	755.99
L82	-68	769.09	2 938	745.59	R82	-68	803.94	2 938	768.49
L83	-69	382.86	2 938	381.23	R83	-69	322.98	2 938	460.37
L84	-69	413.28	2 938	366.13	R84	-69	498.85	2 938	362.80
L85	-69	669.19	2 938	255.13	R85	-69	681.75	2 938	281.77
L86	-70	404.50	2 937	935.29	R86	-69	942.27	2 938	168.16
L87	-70	631.72	2 937	836.11	R87	-71	316.51	2 937	572.42
L88	-70	944.92	2 937	699.85	R88	-71	450.74	2 937	514.06
L89	-71	304.57	2 937	543.32	R89	-71	820.64	2 937	353.12
L90	-71	319.12	2 937	536.99	R90	-72	008.20	2 937	278.92
L91	-71	999.81	2 937	241.41	R91	-72	214.80	2 937	238.71
L92	-72	199.00	2 937	211.13	R92	-72	591.78	2 937	182.56
L93	-72	575.88	2 937	153.76	R93	-72	604.30	2 937	180.69
L94	-72	580.90	2 937	153.00	R94	-72	983.18	2 937	124.38
L95	-72	967.94	2 937	094.37	R95	-73	203.59	2 937	091.63
L96	-73	140.04	2 937	068.30	R96	-73	445.01	2 937	055.71
L97	-73	434.73	2 937	023.84	R97	-73	609.22	2 937	031.28
L98	-73	598.84	2 936	999.08	R98	-73	801.19	2 937	002.71
L99	-73	801.94	2 936	968.44	R99	-74	320.48	2 936	925.50
L100	-74	314.53	2 936	891.17	R100	-74	402.44	2 936	913.32
L101	-74	863.53	2 936	813.07	R101	-74	868.94	2 936	844.12
L102	-74	879.17	2 936	810.84	R102	-75	001.74	2 936	824.42

Vel 8 Van 9
Sheet of

P811/12

PADRESERWE KOÖRDINATE / ROAD RESERVE CO-ORDINATES									
LINKERKANT/LEFT HAND SIDE				REGTERKANT/RIGHT HAND SIDE					
				WG 25°	X				
L103	-75	444.00	2 936	727.20	R103	-75	467.14	2 936	755.24
L104	-75	995.61	2 936	644.61	R104	-76	000.28	2 936	675.96
L105	-76	032.60	2 936	639.13	R105	-76	070.34	2 936	665.54
L106	-76	131.53	2 936	607.82	R106	-76	101.69	2 936	654.72
L107	-76	559.03	2 936	428.47	R107	-76	197.00	2 936	614.77
L108	-77	043.51	2 936	224.00	R108	-77	047.07	2 936	258.39
L109	-77	045.01	2 936	223.37	R109	-77	596.50	2 936	028.04
L110	-77	583.46	2 935	996.81	R110	-79	123.79	2 935	387.75
L111	-78	008.22	2 935	820.03	R111	-79	185.76	2 935	382.54
L112	-78	432.37	2 935	643.30	R112	-79	265.94	2 935	405.34
L113	-78	707.88	2 935	527.70	R113	-79	307.97	2 935	422.34
L114	-79	143.74	2 935	345.58	R114	-79	337.86	2 935	444.13
L115	-79	173.17	2 935	333.36	R115	-79	362.27	2 935	469.72
L116	-79	209.59	2 935	351.78	R116	-79	610.61	2 935	910.73
L117	-79	214.39	2 935	354.21	R117	-79	682.65	2 936	038.87
L118	-79	273.02	2 935	372.21	R118	-79	776.71	2 936	083.80
L119	-79	320.21	2 935	395.00	R119	-79	871.89	2 936	070.01
L120	-79	394.35	2 935	466.19	R120	-80	371.38	2 935	997.72
L121	-79	699.02	2 936	005.26	R121	-80	398.85	2 936	006.40
L122	-79	787.51	2 936	050.14	R122	-80	425.84	2 936	011.48
L123	-80	357.25	2 935	968.36	R123	-80	458.73	2 936	011.58
L124	-80	362.95	2 935	980.44	R124	-80	543.44	2 936	000.62
L125	-80	426.05	2 935	997.69	R125	-80	789.55	2 935	963.65
L126	-80	449.84	2 935	998.76	R126	-81	068.14	2 935	922.44
L127	-80	540.76	2 935	985.76	R127	-81	068.78	2 935	924.43
L128	-80	787.08	2 935	949.10					
L129	-81	063.74	2 935	908.65					
L130	-81	059.81	2 935	896.33					

Vel 9
Sheet

Van 9
of

P811/12

Printed by and obtainable from the Government Printer, Bosman Street, Private Bag X85, Pretoria, 0001
Publications: Tel: (012) 334-4508, 334-4509, 334-4510
Advertisements: Tel: (012) 334-4673, 334-4674, 334-4504
Subscriptions: Tel: (012) 334-4735, 334-4736, 334-4737
Cape Town Branch: Tel: (021) 465-7531

Gedruk deur en verkrygbaar by die Staatsdrukker, Bosmanstraat, Privaatsak X85, Pretoria, 0001
Publikasies: Tel: (012) 334-4508, 334-4509, 334-4510
Advertensies: Tel: (012) 334-4673, 334-4674, 334-4504
Subskripsies: Tel: (012) 334-4735, 334-4736, 334-4737
Kaapstad-tak: Tel: (021) 465-7531