



Government Gazette Staatskoerant

REPUBLIC OF SOUTH AFRICA
REPUBLIEK VAN SUID-AFRIKA

Vol. 575

Pretoria, 10 May
Mei 2013

No. 36441

N.B. The Government Printing Works will not be held responsible for the quality of "Hard Copies" or "Electronic Files" submitted for publication purposes



AIDS HELPLINE: 0800-0123-22 Prevention is the cure

IMPORTANT NOTICE

The Government Printing Works will not be held responsible for faxed documents not received due to errors on the fax machine or faxes received which are unclear or incomplete. Please be advised that an "OK" slip, received from a fax machine, will not be accepted as proof that documents were received by the GPW for printing. If documents are faxed to the GPW it will be the sender's responsibility to phone and confirm that the documents were received in good order.

Furthermore the Government Printing Works will also not be held responsible for cancellations and amendments which have not been done on original documents received from clients.

CONTENTS**INHOUD**

<i>No.</i>	<i>Page No.</i>	<i>Gazette No.</i>	<i>No.</i>	<i>Bladsy No.</i>	<i>Koerant No.</i>
GOVERNMENT NOTICE			GOEWERMENTSKENNISGEWING		
Transport, Department of			Vervoer, Departement van		
<i>Government Notice</i>			<i>Goewermentskennisgewing</i>		
335			335		
South African National Agency Limited and National Roads Act (7/1998): Declaration of National Road N11 Section 13X.....	3	36441	Wet op die Suid-Afrikaanse Nasionale Radagentskap Beperk op Nasionale Paaie (7/1998): Verklaring van Nasionale Pad N11 Seksie 13X.....	4	36441

**GOVERNMENT NOTICE
GOEWERMENTSKENNISGEWING**

**DEPARTMENT OF TRANSPORT
DEPARTEMENT VAN VERVO**

No. 335

10 May 2013

**THE SOUTH AFRICAN NATIONAL ROADS
AGENCY SOC LIMITED**

Registration No: 98/09584/06

DECLARATION OF NATIONAL ROAD N11 SECTION 13X

By virtue of section 40(1)(a) of The South African National Roads Agency Limited and National Roads Act, 1998 (Act No. 7 of 1998), I hereby declare the route section as indicated on subjoined sheets 1 to 8 of Plan No. P788/10 as National Road.

(National Road N11 Section 13X: N1/26X – N11/13)



MINISTER OF TRANSPORT

No. 335

10 Mei 2013


**DIE SUID-AFRIKAANSE NASIONALE
PADAGENTSKAP MSB BEPERK**

Registrasie No: 98/09584/06

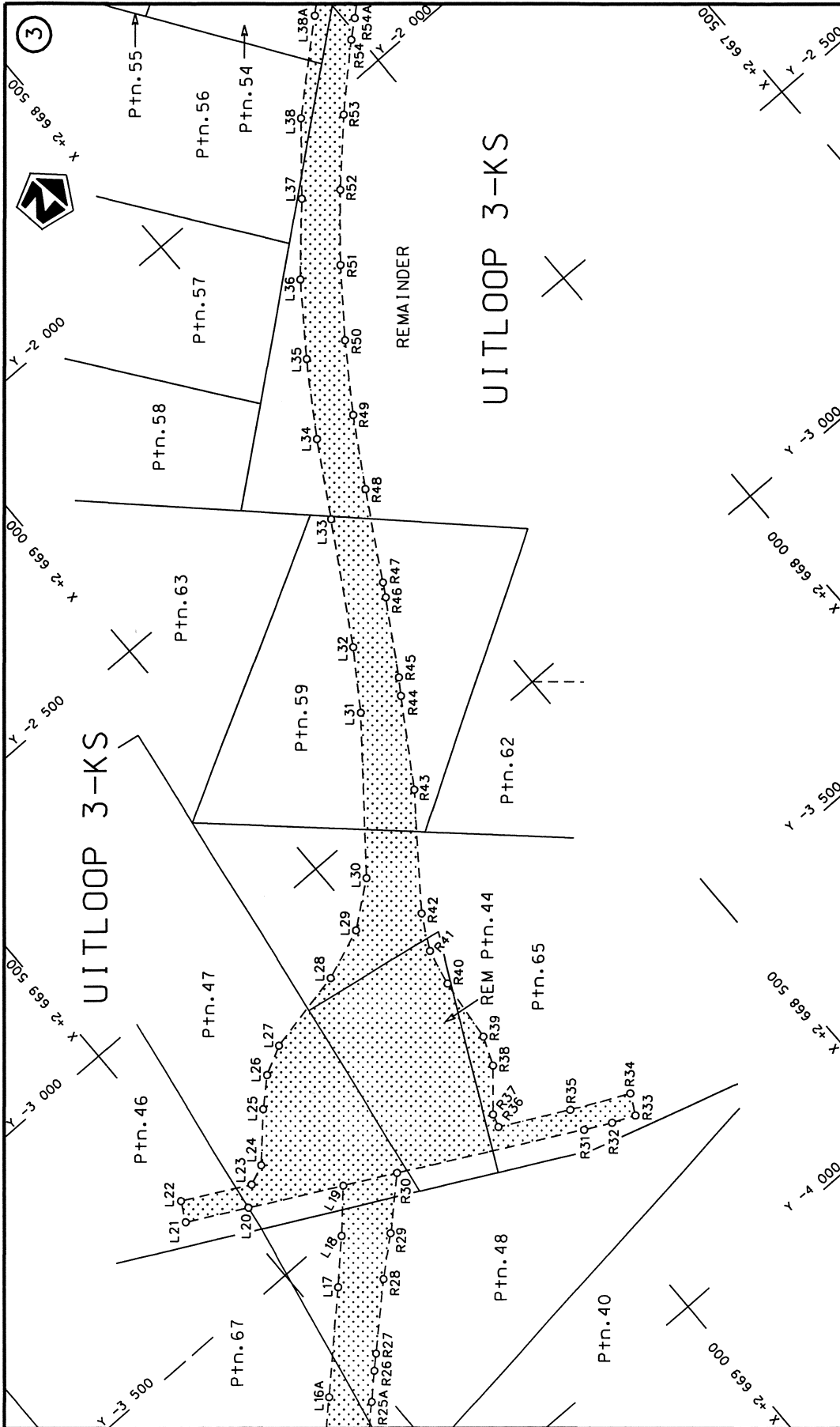
VERKLARING VAN NASIONALE PAD N11 SEKSIE 13X.

Kragtens Artikel 40(1)(a) van die Wet op die Suid-Afrikaanse Nasionale Padagentskap Beperk en op Nasionale Paaie, 1998 (Wet no.7 van 1998), verklaar ek hiermee die roete seksie soos aangetoon op meegaande velle 1 tot 8 van Plan no. P788/10 as Nasionale Pad.

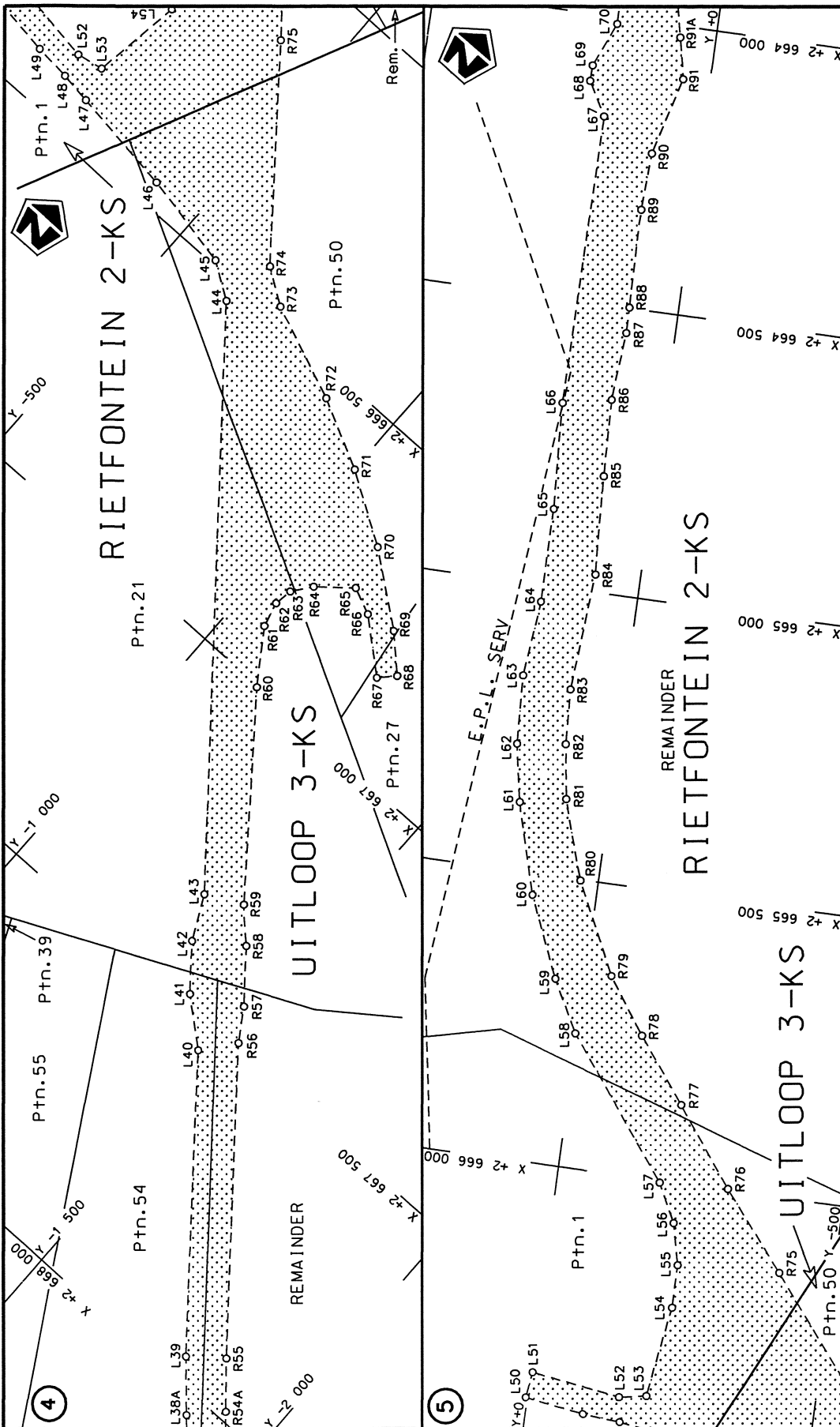
(Nasionale Pad N11 Seksie 13X: N1/26X – N11/13)

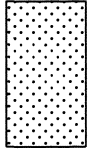


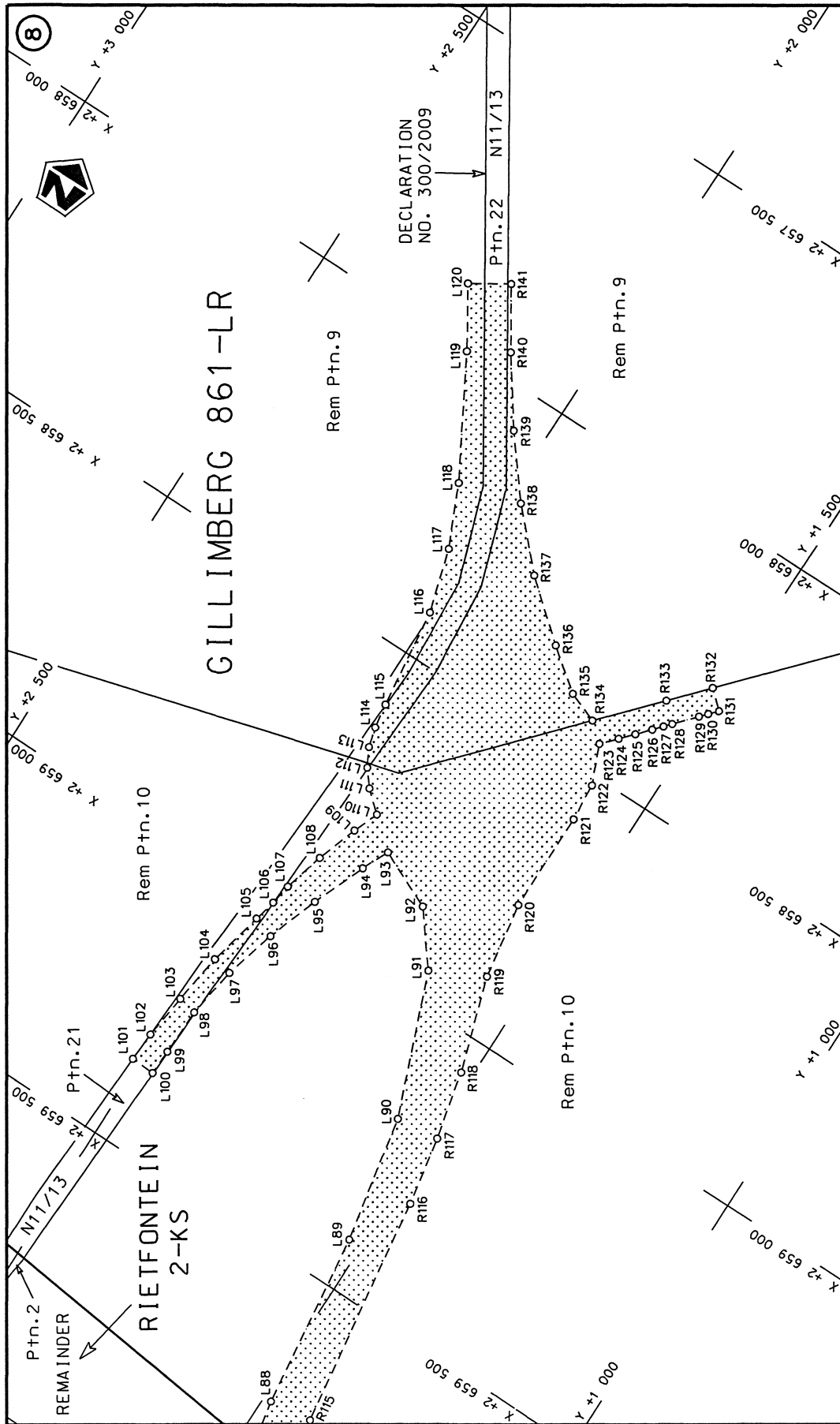
MINISTER VAN VERVOER



<p>Die Suid Afrikaanse Nasionale Padagentskap Beperk The South African National Roads Agency Limited</p>	<p>Die figuur getoon The figure shown</p>	<p>stel die padreserwe voor van 'n gedeelte represents the road reserve of a portion van Nasionale Roete N11 of National Route</p>	<p>Vel Sheet 2 of 8 Plan P788/10</p>
<p>13X</p>		<p>Seksie Section</p>	



<p>Die Suid Afrikaanse Nasionale Padagentskap Beperk The South African National Roads Agency Limited</p>	<p>Die figuur getoon The figure shown</p>  <p>stel die podreserwe voor van 'n gedeelte represents the road reserve of a portion van Nasionale Roete N11 of National Route</p>	<p>Vel Sheet 3 of 8 Plan P788/10</p>
--	--	--



<p>Die Suid Afrikaanse Nasionale Padagentskap Beperk The South African National Roads Agency Limited</p>	<p>Die figuur getoon The figure shown</p>	<p>steldie padreserwe voor van 'n gedeelte represents the road reserve of a portion van Nasionale Roete N11 of National Route</p>	<p>Vel Sheet 5 of 8 Plan P788/10</p>
		<p>13X</p>	<p>Section</p>

PADRESERWE KOÖRDINATE / ROAD RESERVE CO-ORDINATES							
LINKERKANT/LEFT HAND SIDE				REGTERKANT/RIGHT HAND SIDE			
	Y	X	WG 27°		Y	X	
L1	-6 164.51	2 673	247.18	R1	-6 285.10	2 673	239.41
L2	-6 125.25	2 673	222.16	R2	-6 214.18	2 673	191.54
L3	-6 082.41	2 673	181.53	R3	-6 138.75	2 673	128.48
L4	-6 009.84	2 673	104.71	R4	-6 068.97	2 673	056.83
L5	-5 943.63	2 673	021.30	R5	-6 006.47	2 672	978.27
L6	-5 887.74	2 672	930.55	R6	-5 951.68	2 672	891.58
L7	-5 842.42	2 672	835.43	R7	-5 909.73	2 672	809.16
L8	-5 374.99	2 671	772.62	R8	-5 806.03	2 672	571.44
L9	-5 320.87	2 671	666.95	R9	-5 712.91	2 672	289.79
L10	-4 738.18	2 670	681.30	R10	-5 620.83	2 672	070.29
L11	-4 698.32	2 670	654.42	R11	-5 551.21	2 671	974.03
L11X	-4 596.13	2 670	747.81	R12	-5 523.24	2 671	907.35
L11Y	-4 554.88	2 670	724.86	R13	-5 477.56	2 671	807.96
L12	-4 674.34	2 670	615.56	R14	-5 430.65	2 671	718.95
L13	-4 655.09	2 670	567.30	R15	-5 383.34	2 671	618.97
L14	-4 472.88	2 670	388.11	R16	-5 303.80	2 671	495.99
L15	-4 426.63	2 670	345.38	R17	-4 889.47	2 670	786.41
L16	-4 338.79	2 670	218.43	R18	-4 791.95	2 670	632.13
L17	-3 576.66	2 669	442.81	R19	-4 779.28	2 670	582.37
L18	-3 513.05	2 669	380.54	R19X	-4 891.49	2 670	478.12
L19	-3 448.86	2 669	321.40	R19Y	-4 861.10	2 670	444.89
L20	-3 369.42	2 669	472.68	R20	-4 749.85	2 670	539.89
L21	-3 317.35	2 669	571.83	R21	-4 710.68	2 670	514.12
L22	-3 284.14	2 669	554.48	R22	-4 652.29	2 670	439.39
L23	-3 342.74	2 669	442.55	R23	-4 569.51	2 670	334.22
L24	-3 328.10	2 669	407.89	R24	-4 490.46	2 670	252.49
L25	-3 256.55	2 669	341.98	R25	-4 342.59	2 670	117.67
L26	-3 215.84	2 669	298.46	R26	-3 728.64	2 669	488.64
L27	-3 190.92	2 669	249.32	R27	-3 708.05	2 669	466.83
L28	-3 161.20	2 669	103.63	R28	-3 618.79	2 669	372.27
L29	-3 127.00	2 669	015.96	R29	-3 566.31	2 669	311.55
L30	-3 070.47	2 668	942.56	R30	-3 494.35	2 669	234.78
L31	-2 845.02	2 668	763.05	R31	-3 650.35	2 668	937.70
L32	-2 749.52	2 668	699.24	R32	-3 672.59	2 668	892.90
L33	-2 554.47	2 668	583.08	R33	-3 689.43	2 668	853.68
L34	-2 431.88	2 668	510.93	R34	-3 654.44	2 668	835.70
L35	-2 313.98	2 668	433.99	R35	-3 608.68	2 668	933.54
L36	-2 201.39	2 668	352.20	R36	-3 549.32	2 669	048.47
L37	-2 095.90	2 668	258.93	R37	-3 526.70	2 669	041.55
L38	-1 988.48	2 668	168.77	R38	-3 462.10	2 668	986.52
L39	-1 800.10	2 667	958.95	R39	-3 413.15	2 668	966.20
L40	-1 465.17	2 667	545.47	R40	-3 302.94	2 668	953.34
L41	-1 389.73	2 667	481.68	R41	-3 239.35	2 668	940.09
L42	-1 331.16	2 667	409.93	R42	-3 180.29	2 668	908.81
L43	-1 293.87	2 667	334.37	R43	-3 008.66	2 668	778.88
L44	- 637.67	2 666	532.06	R44	-2 869.43	2 668	690.13
L45	- 576.31	2 666	491.64	R45	-2 842.55	2 668	671.71
L46	- 408.06	2 666	458.50	R46	-2 721.32	2 668	598.31
L47	- 220.83	2 666	432.57	R47	-2 698.45	2 668	585.33
L48	- 165.49	2 666	424.91	R48	-2 553.73	2 668	503.18
L49	- 100.48	2 666	420.21	R49	-2 441.42	2 668	435.43
				Vel	6	Van	8
				Sheet		of	P788/10

PADRESERWE KOÖRDINATE / ROAD RESERVE CO-ORDINATES										
LINKERKANT/LEFT HAND SIDE				REGTERKANT/RIGHT HAND SIDE						
				WG 27°				X		
L50	3.44	2	666	405.39	R50	-2	332.84	2	668	361.84
L51	-2.88	2	666	360.23	R51	-2	228.31	2	668	282.62
L52	-158.04	2	666	382.01	R52	-2	128.11	2	668	197.97
L53	-204.79	2	666	373.42	R53	-2	032.52	2	668	108.15
L54	-228.14	2	666	215.20	R54	-1	941.82	2	668	013.40
L55	-227.76	2	666	140.71	R55	-1	856.26	2	667	913.98
L56	-210.59	2	666	069.22	R56	-1	509.99	2	667	489.46
L57	-177.27	2	666	002.68	R57	-1	475.18	2	667	435.47
L58	2.96	2	665	766.79	R58	-1	408.28	2	667	353.86
L59	50.12	2	665	677.28	R59	-1	357.69	2	667	302.59
L60	110.88	2	665	538.22	R60	-1	123.92	2	667	003.46
L61	155.65	2	665	381.01	R61	-1	062.77	2	666	914.78
L62	174.11	2	665	281.10	R62	-1	051.41	2	666	871.26
L63	179.73	2	665	161.15	R63	-1	056.82	2	666	839.32
L64	166.24	2	665	029.48	R64	-1	082.46	2	666	805.68
L65	166.24	2	664	865.57	R65	-1	139.56	2	666	758.70
L66	176.37	2	664	679.87	R66	-1	186.00	2	666	778.77
L67	174.62	2	664	174.42	R67	-1	271.85	2	666	851.37
L68	207.05	2	664	115.80	R68	-1	297.10	2	666	825.10
L69	206.90	2	664	088.69	R69	-1	240.15	2	666	770.38
L70	174.66	2	664	011.56	R70	-1	121.73	2	666	679.03
L71	174.64	2	663	543.77	R71	-1	000.96	2	666	604.61
L72	164.89	2	663	396.64	R72	-	880.99	2	666	544.27
L73	169.88	2	662	946.16	R73	-	714.08	2	666	477.75
L74	184.93	2	662	693.82	R74	-	654.18	2	666	437.50
L75	210.28	2	662	537.67	R75	-	406.57	2	666	129.29
L76	245.29	2	662	412.45	R76	-	297.96	2	665	997.30
L77	282.57	2	662	293.80	R77	-	196.02	2	665	864.49
L78	335.55	2	662	169.25	R78	-	112.05	2	665	754.34
L79	958.48	2	660	975.61	R79	-45.22		2	665	658.78
L80	1 009.17	2	660	904.83	R80	30.74		2	665	501.75
L81	1 061.09	2	660	806.58	R81	74.71		2	665	364.82
L82	1 087.69	2	660	738.38	R82	88.66		2	665	270.00
L83	1 291.25	2	660	344.64	R83	93.29		2	665	174.27
L84	1 345.75	2	660	226.56	R84	78.69		2	664	968.98
L85	1 391.74	2	660	105.61	R85	88.36		2	664	796.69
L86	1 430.68	2	659	980.07	R86	92.97		2	664	662.30
L87	1 462.01	2	659	853.69	R87	84.09		2	664	543.41
L88	1 485.84	2	659	724.38	R88	84.54		2	664	498.90
L89	1 524.31	2	659	412.46	R89	88.10		2	664	326.92
L90	1 567.22	2	659	189.73	R90	83.58		2	664	227.17
L91	1 663.44	2	658	943.97	R91	47.61		2	664	091.29
L92	1 732.91	2	658	855.46	R92	82.98		2	663	926.39
L93	1 835.64	2	658	809.57	R93	86.11		2	663	660.56
L94	1 857.20	2	658	857.23	R94	91.46		2	663	463.97
L95	1 896.74	2	658	952.88	R95	91.93		2	662	964.70
L96	1 929.44	2	659	045.44	R96	86.48		2	662	855.68
L97	1 954.16	2	659	138.38	R97	96.17		2	662	734.41
L98	1 967.47	2	659	229.61	R98	131.85		2	662	545.53
L99	1 970.15	2	659	312.80	R99	165.53		2	662	409.50
L100	1 972.01	2	659	358.10	R100	210.48		2	662	276.77
				Vel 7		Van 8		P788/10		
				Sheet		of				

PADRESERWE KOÖRDINATE / ROAD RESERVE CO-ORDINATES						
LINKERKANT/LEFT HAND SIDE				REGTERKANT/RIGHT HAND SIDE		
WG 27°				X		
L101	2	014.12	2 659 356.38	R101	284.95	2 662 079.56
L102	2	011.96	2 659 305.94	R102	325.11	2 662 019.48
L103	2	001.38	2 659 223.17	R103	399.36	2 661 867.19
L104	1	987.77	2 659 131.87	R104	490.85	2 661 696.48
L105	1	966.70	2 659 033.50	R105	546.78	2 661 602.88
L106	1	957.27	2 658 994.15	R106	899.39	2 660 934.23
L107	1	950.84	2 658 956.81	R107	929.68	2 660 864.05
L108	1	931.51	2 658 883.94	R108	988.55	2 660 752.62
L109	1	906.09	2 658 810.21	R109	1 021.85	2 660 702.43
L110	1	887.72	2 658 764.70	R110	1 200.49	2 660 364.30
L111	1	923.50	2 658 734.10	R111	1 260.39	2 660 240.72
L112	1	946.87	2 658 706.09	R112	1 311.57	2 660 113.30
L113	1	963.84	2 658 674.13	R113	1 353.81	2 659 982.63
L114	1	973.25	2 658 639.06	R114	1 386.88	2 659 849.34
L115	1	980.21	2 658 595.76	R115	1 410.64	2 659 714.09
L116	2	003.09	2 658 418.24	R116	1 468.49	2 659 301.33
L117	2	036.09	2 658 306.89	R117	1 490.67	2 659 180.73
L118	2	085.01	2 658 200.26	R118	1 518.46	2 659 061.28
L119	2	199.23	2 657 999.67	R119	1 572.53	2 658 896.98
L120	2	262.54	2 657 899.20	R120	1 594.30	2 658 762.20
				R121	1 594.39	2 658 583.72
				R122	1 599.85	2 658 516.72
				R123	1 628.32	2 658 448.59
				R124	1 605.11	2 658 422.62
				R125	1 584.95	2 658 400.05
				R126	1 564.66	2 658 377.24
				R127	1 551.15	2 658 361.87
				R128	1 540.64	2 658 349.97
				R129	1 508.06	2 658 313.15
				R130	1 496.92	2 658 300.52
				R131	1 484.14	2 658 286.28
				R132	1 515.50	2 658 258.18
				R133	1 572.01	2 658 321.36
				R134	1 661.15	2 658 421.02
				R135	1 715.49	2 658 400.71
				R136	1 786.57	2 658 345.86
				R137	1 885.22	2 658 263.67
				R138	1 974.14	2 658 171.58
				R139	2 054.79	2 658 071.57
				R140	2 134.22	2 657 959.71
				R141	2 198.97	2 657 859.14

Vel	8	Van	8	P788/10
Sheet		of		

Printed by and obtainable from the Government Printer, Bosman Street, Private Bag X85, Pretoria, 0001
Publications: Tel: (012) 334-4508, 334-4509, 334-4510
Advertisements: Tel: (012) 334-4673, 334-4674, 334-4504
Subscriptions: Tel: (012) 334-4735, 334-4736, 334-4737
Cape Town Branch: Tel: (021) 465-7531

Gedruk deur en verkrygbaar by die Staatsdrukker, Bosmanstraat, Privaatsak X85, Pretoria, 0001
Publikasies: Tel: (012) 334-4508, 334-4509, 334-4510
Advertensies: Tel: (012) 334-4673, 334-4674, 334-4504
Subskripsies: Tel: (012) 334-4735, 334-4736, 334-4737
Kaapstad-tak: Tel: (021) 465-7531