



# Government Gazette Staatskoerant

REPUBLIC OF SOUTH AFRICA  
REPUBLIEK VAN SUID-AFRIKA

Vol. 601

Pretoria, 1 July  
Julie 2015

**No. 38931**

*N.B. The Government Printing Works will not be held responsible for the quality of "Hard Copies" or "Electronic Files" submitted for publication purposes*



9771682584003



**AIDS HELPLINE: 0800-0123-22 Prevention is the cure**

**DISCLAIMER:**

Government Printing Works reserves the right to apply the 25% discount to all Legal and Liquor notices that comply with the business rules for notice submissions for publication in gazettes.

National, Provincial, Road Carrier Permits and Tender notices will pay the price as published in the Government Gazettes.

For any information, please contact the eGazette Contact Centre on 012-748 6200 or email [info.egazette@gpw.gov.za](mailto:info.egazette@gpw.gov.za)

**CONTENTS****INHOUD**

<i>No.</i>	<i>Page No.</i>	<i>Gazette No.</i>	<i>No.</i>	<i>Bladsy No.</i>	<i>Koerant No.</i>
<b>GOVERNMENT NOTICE</b>			<b>GOEWERMENTSKENNISGEWING</b>		
<b>Transport, Department of</b>			<b>Vervoer, Departement van</b>		
<i>Government Notice</i>			<i>Goewermentskennisgewing</i>		
550		South African National Roads Agency Limited and National Roads Act (7/1998): Declaration amendment of National Road R523 Section 1 .....	3	38931	
			550		Suid-Afrikaanse Nasionale Padagentskap Beperk en Nasionale Paaie Wet (7/1998): Verklaring wysiging van Nasionale Pad R523 Seksie 1 .....
			4	38931	

---

## GOVERNMENT NOTICE

---

### DEPARTMENT OF TRANSPORT

No. 550

1 July 2015

### THE SOUTH AFRICAN NATIONAL ROADS AGENCY LIMITED

Registration No: 1998/009584/30

#### DECLARATION AMENDMENT OF NATIONAL ROAD R523 SECTION 1

AMENDMENT OF DECLARATION NO. 582 OF 2004.

By virtue of section 40(1)(b) of the South African National Roads Agency Limited and National Roads Act, 1998 (Act No. 7 of 1998) I hereby amend Declaration no. 582 of 2004 by replacing the section from Remainder Portion 8 of the farm Zuurbult 450 - MS to Portion 2 of the farm Fenton 770 - MS, with the subjoined sheets 1 to 13 of Plan P866/14.

**(National Route R523 Section 1: Vivo to Masekwaspoort)**

  
\_\_\_\_\_  
MINISTER OF TRANSPORT

## GOEWERMENSKENNISGEWING

---

### DEPARTEMENT VAN VERVOER

No. 550

1 Julie 2015

## DIE SUID-AFRIKAANSE NASIONALE PADAGENTSKAP BEPERK

Registrasie No: 1998/009584/30

### WYSIGING VAN VERKLARING VAN R523 SEKSIE 1

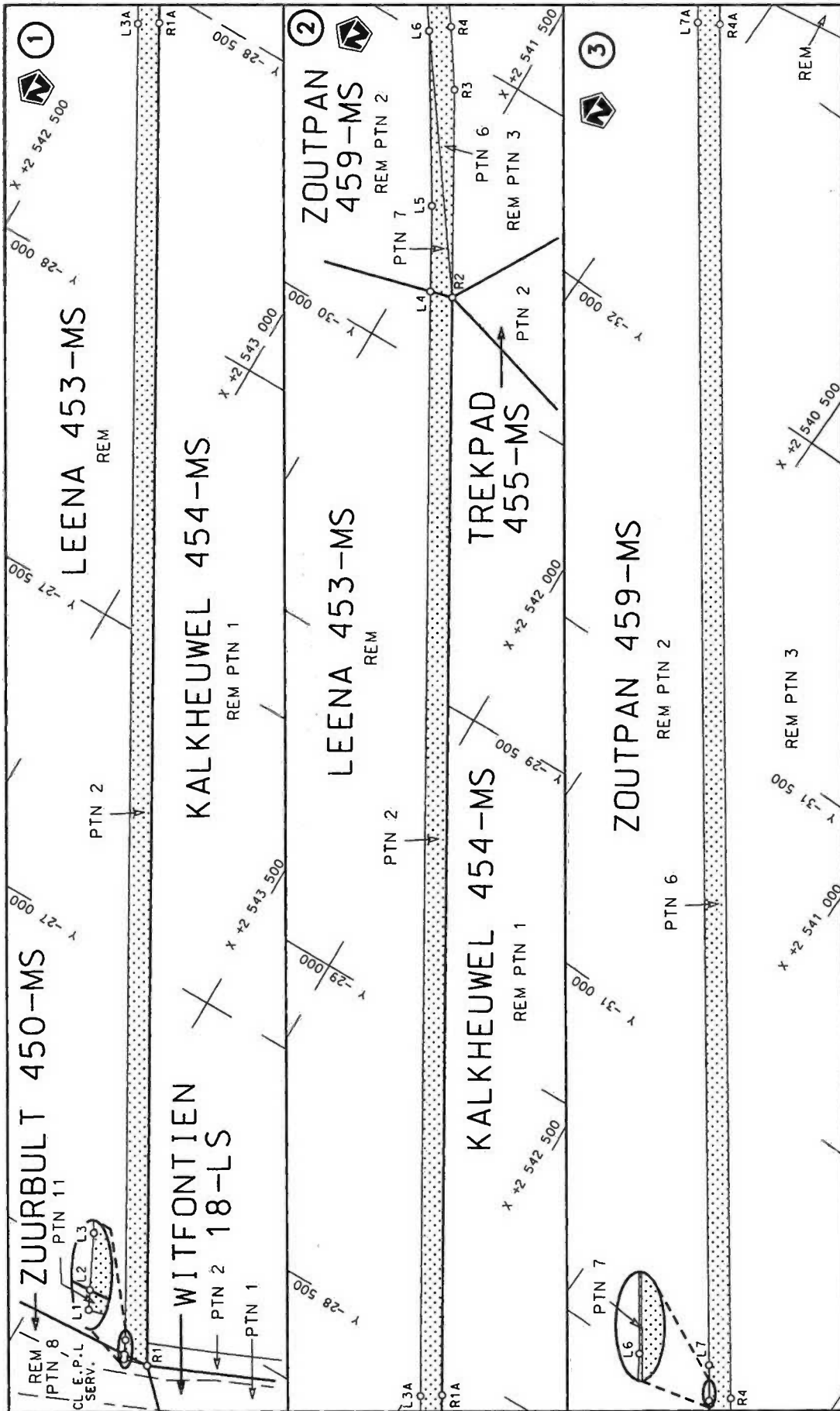
WYSIGING VAN VERKLARING NO. 582 VAN 2004.


Kragtens artikel 40 (1)(b) van die Suid Afrikaanse Nasionale Padagentskap Beperk en Nasionale Paaie Wet (Wet No. 7 van 1998), wysig ek hiermee Verklaring no. 582 van 2004, deur die gedeelte vanaf Restant Gedeelte 8 van die plaas Zuurbult 450 - MS tot Gedeelte 2 van die plaas Fenton 770 - MS, te vervang met bygaande velle 1 tot 13 van Plan P866/14.

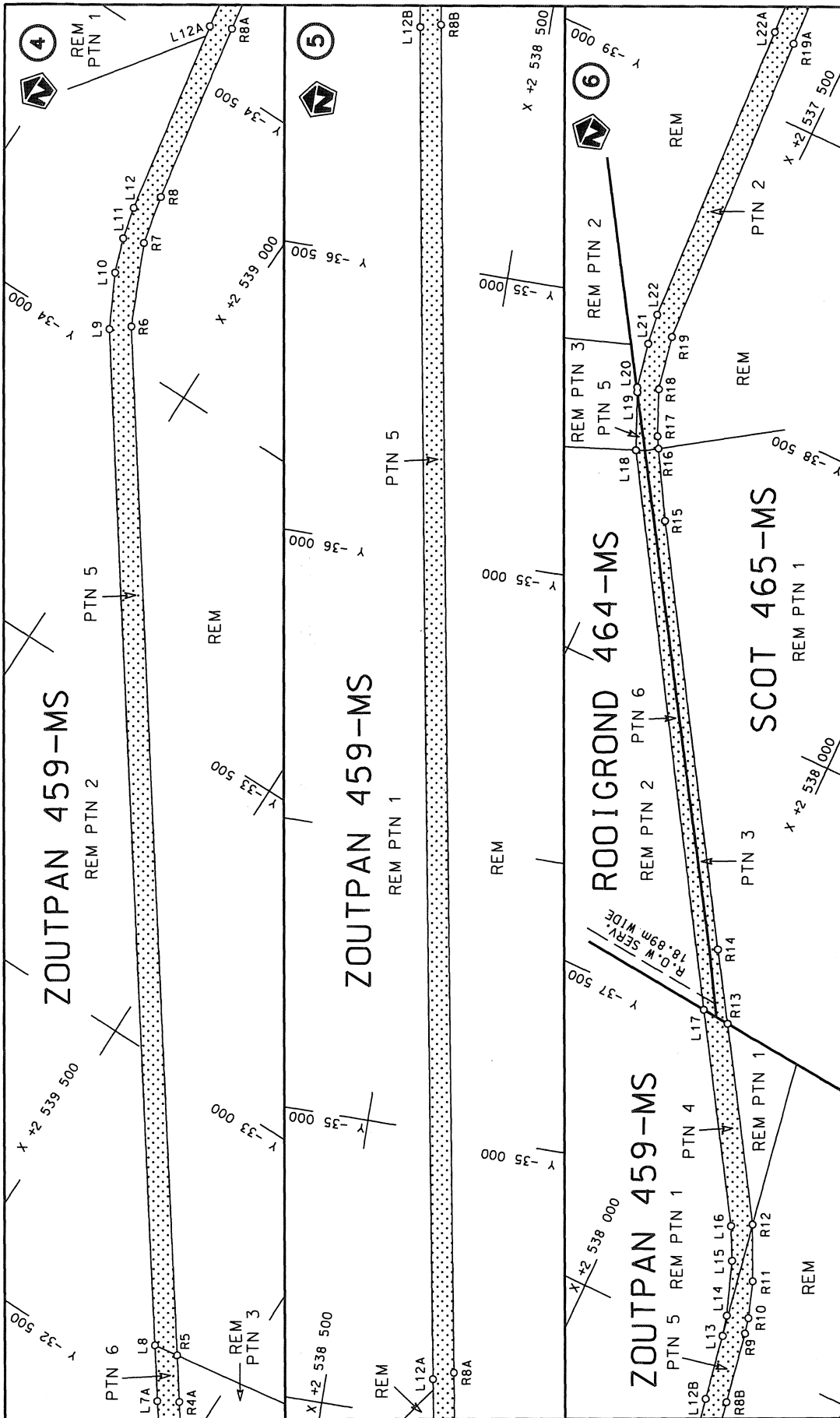
(Nasionale Roete R523 Section 1: Vivo to Masekwaspoort)

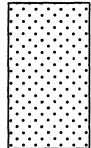
  
\_\_\_\_\_

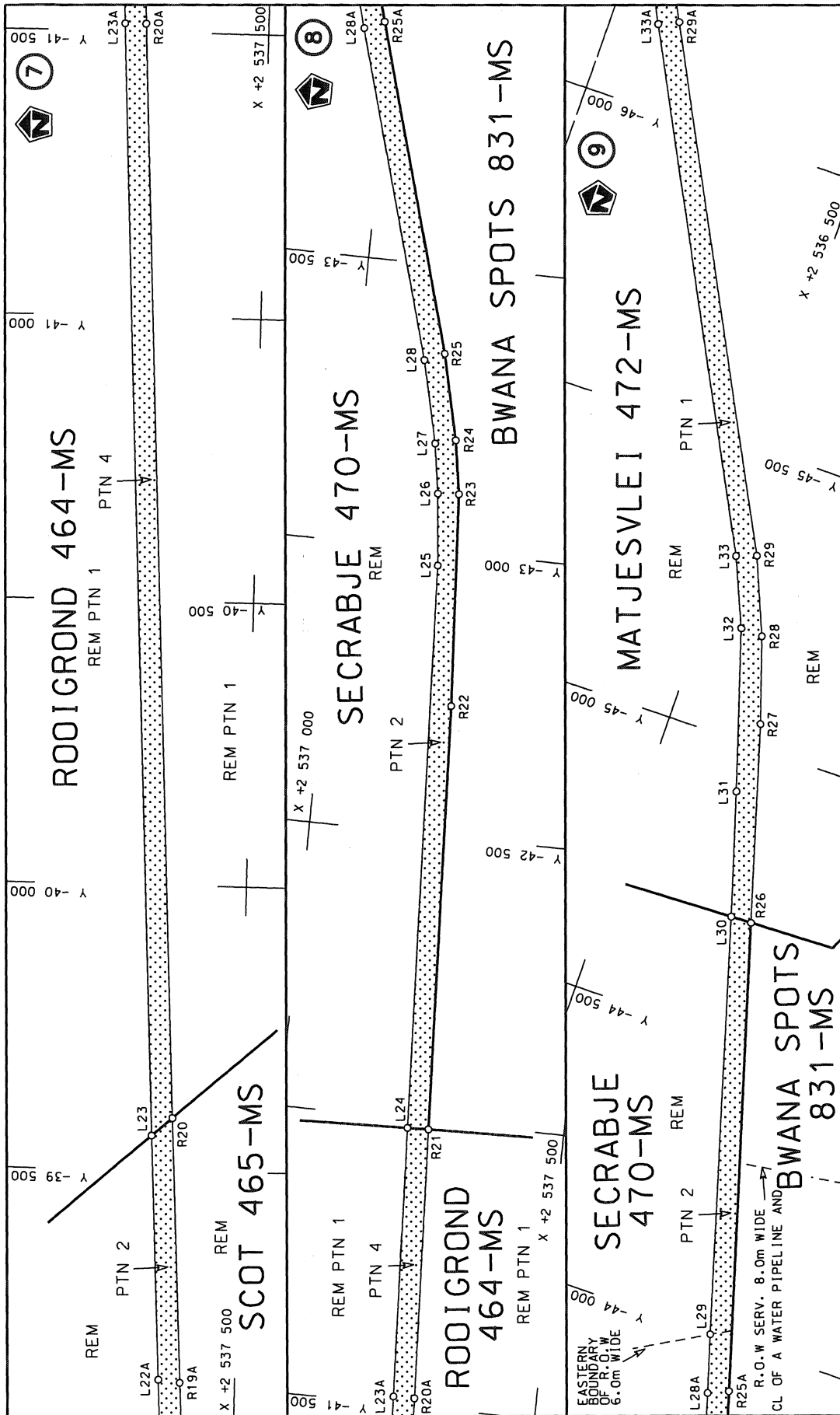
MINISTER VAN VERVOER



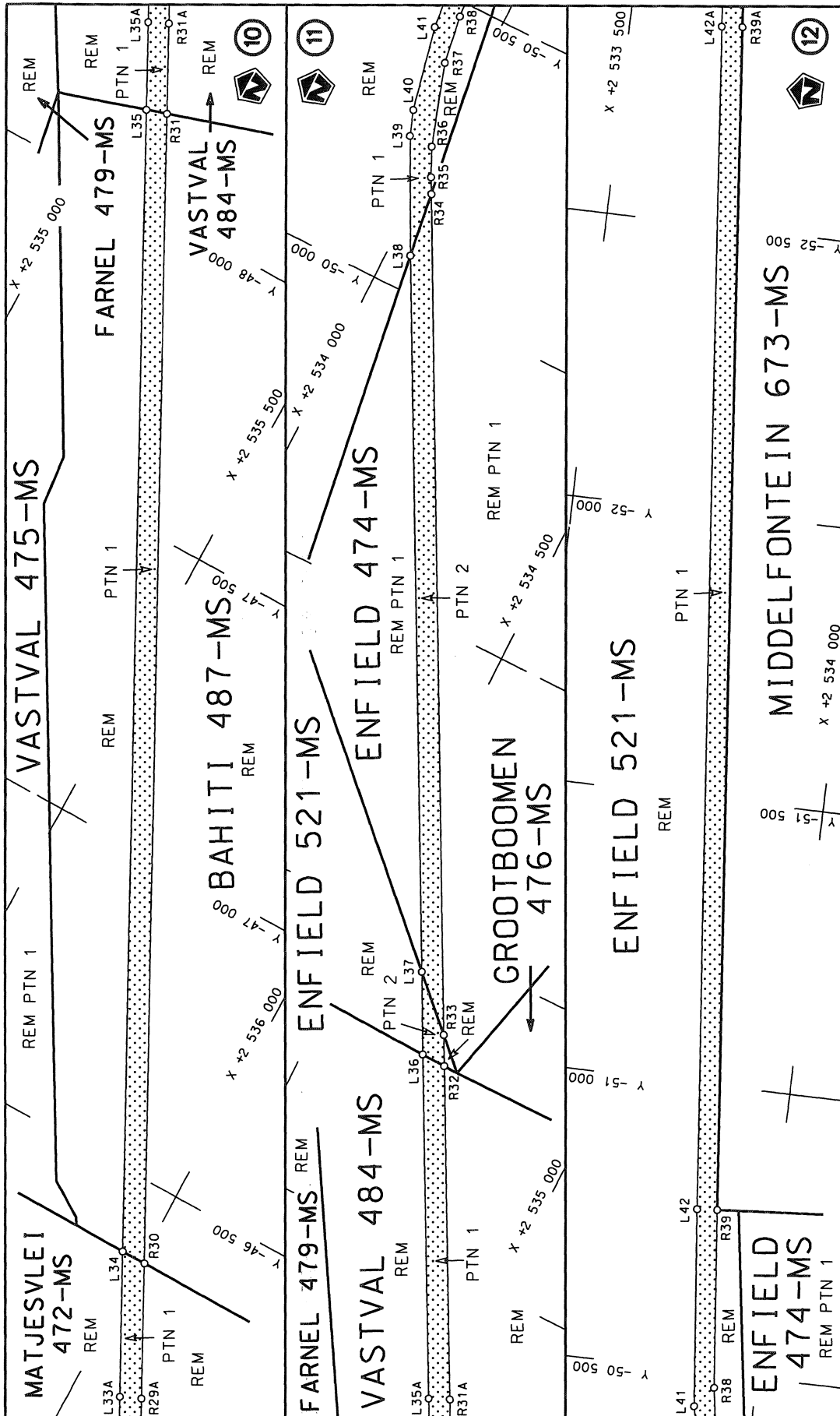
<p>Die Suid Afrikaanse Nasionale Padagentskap Beperk The South African National Roads Agency Limited</p>	<p>Die figuur getoon The figure shown</p> 	<p>steldie padreserwe voor van 'n gedeelte represents the road reserve of a portion van Nasionale Roete R523 Sektie of National Route Section</p>	<p>Vel Sheet 1 of 13 Plan P866/14</p>
--	---	---	---

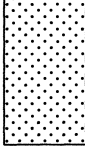


Die Suid Afrikaanse Nasionale Padagentskap Beperk The South African National Roads Agency Limited	Die figuur getoon The figure shown		stel die podreserwe voor van 'n gedeelte represents the road reserve of a portion van Nasionale Roete R523 of National Route Section 1	Vel Sheet 2 of 13
				Plan P866/14

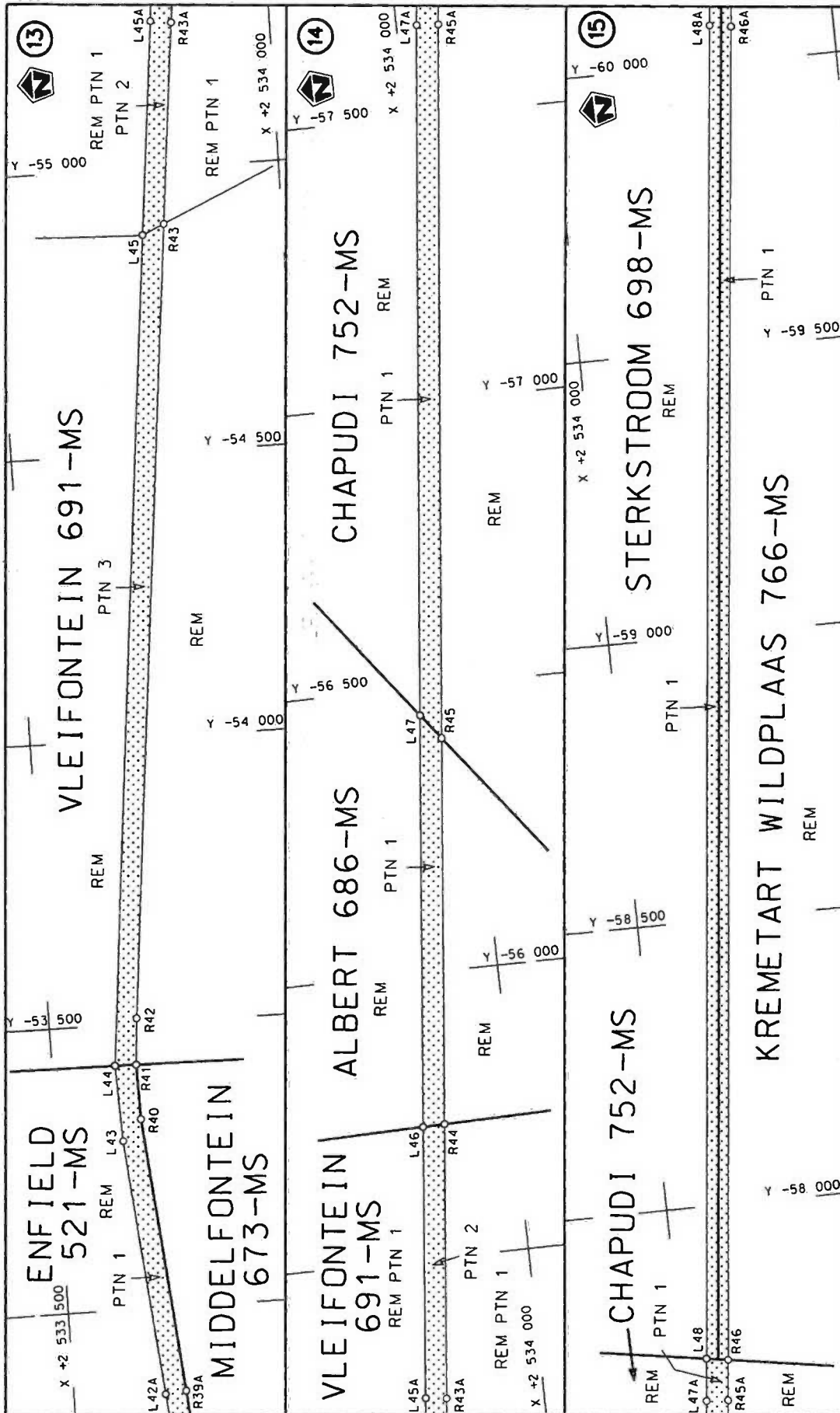



<p>Die Suid Afrikaanse Nasionale Podagentskap Beperk The South African National Roads Agency Limited</p>	<p>Die figuur getoon The figure shown</p>	<p>steldie podreserwe voor van 'n gedeelte represents the road reserve of a portion van Nasionale Roete R523 of National Route</p>	<p>Vel Sheet 3 van of 13 Plan P866/14</p>
--	---	--	---

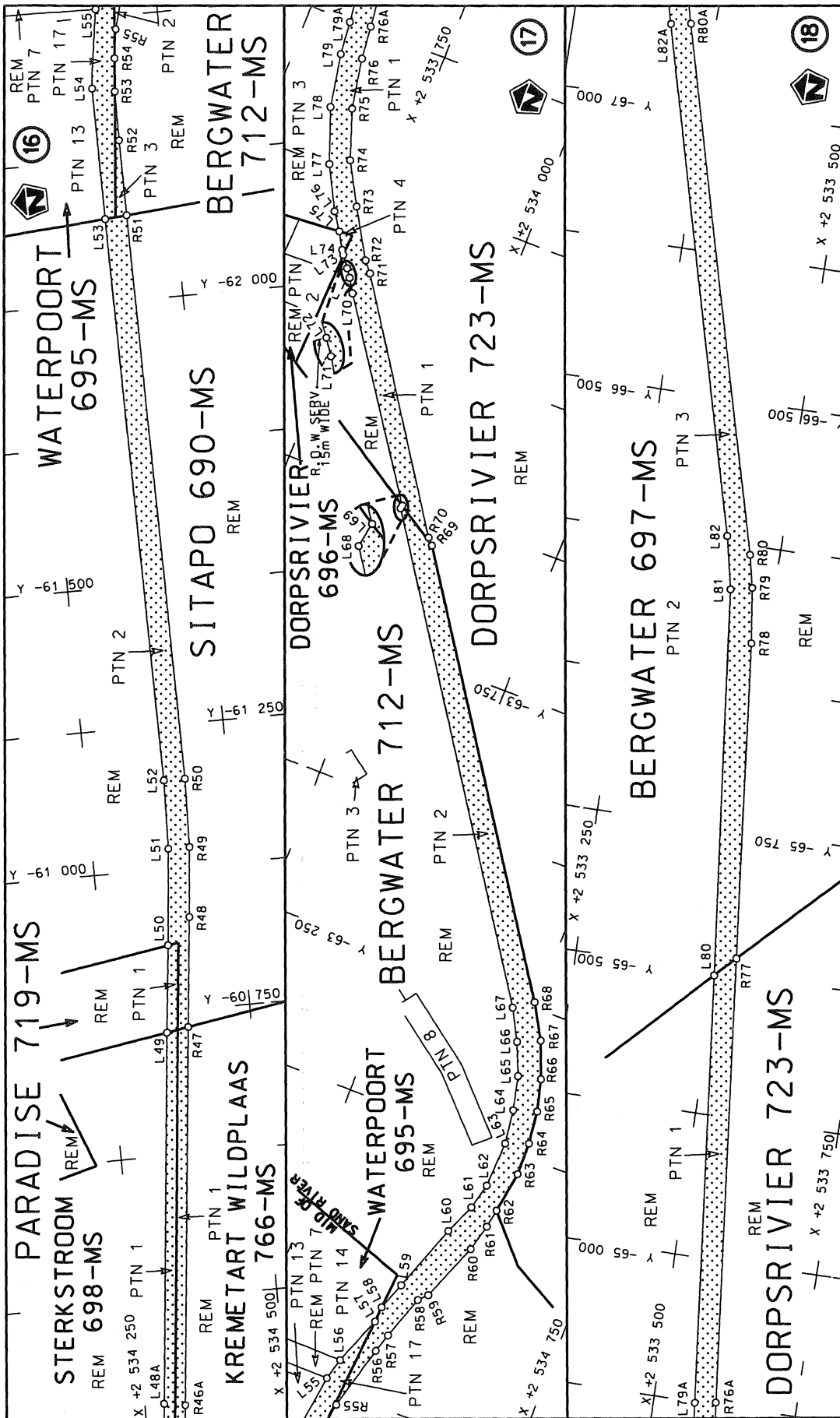


<p>Die Suid Afrikaanse Nasionale Padagentskap Beperk The South African National Roads Agency Limited</p>	<p>Die figuur getoon The figure shown</p> 	<p>steldie podreserwe voor van 'n gedeelte represents the road reserve of a portion van Nasionale Roete R523 Seksie 1 of National Route Section</p>	<p>Vel Sheet 4 of 13 Plan P866/14</p>
--	---	---	---

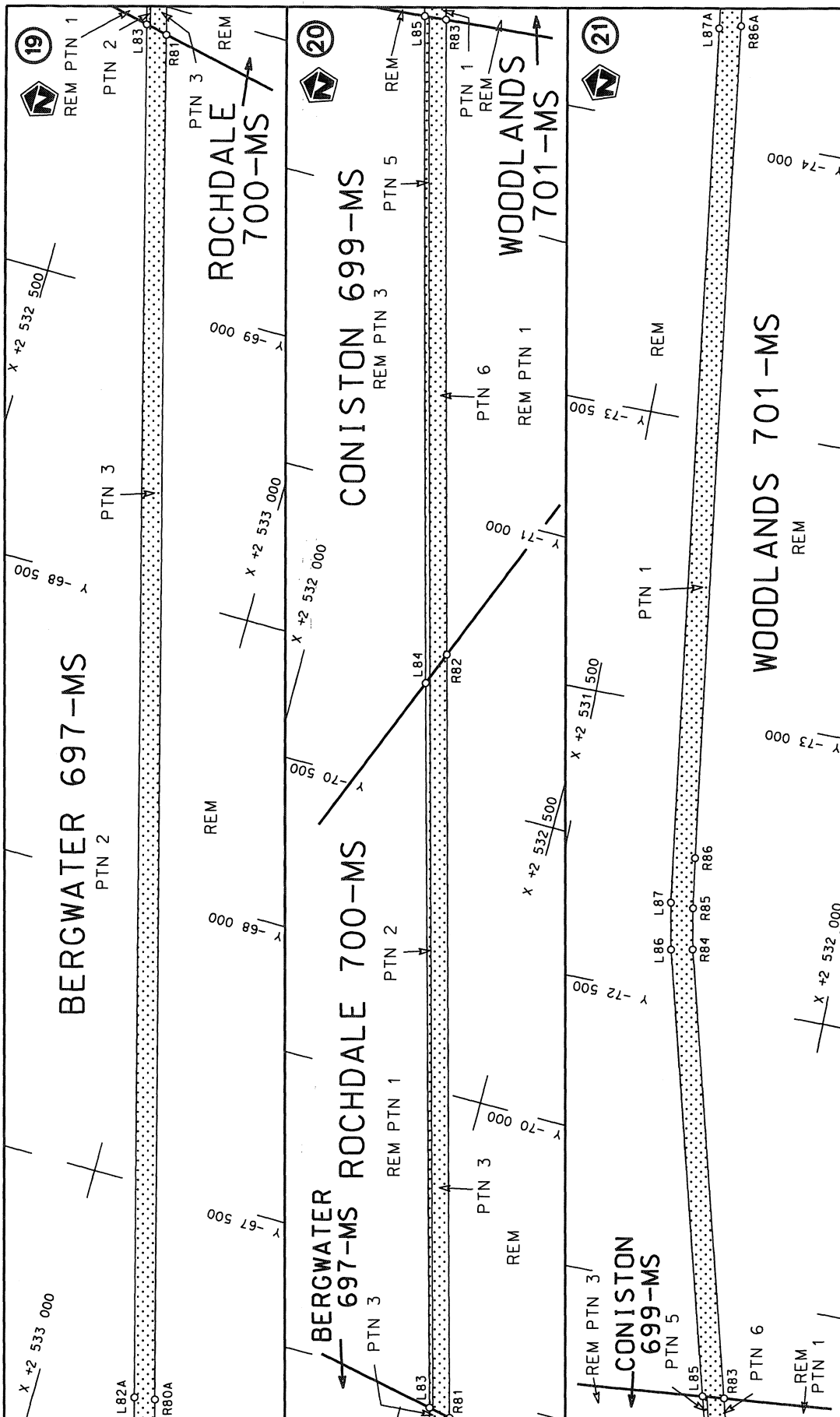


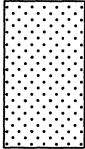


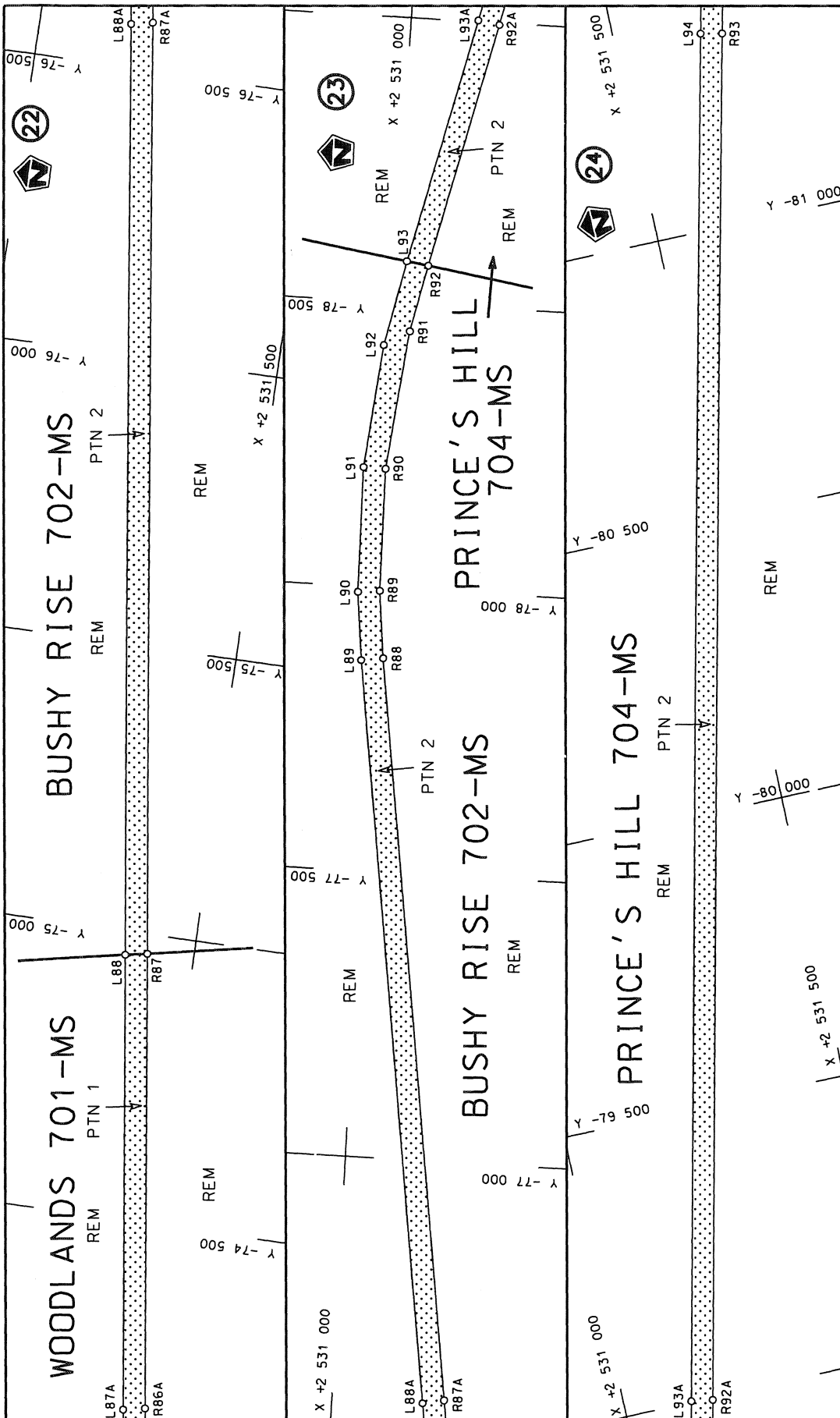
Die Suid Afrikaanse Nasionale Podagentskap Beperk The South African National Roads Agency Limited	Die figuur getoon The figure shown		steldie podreserwe voor van 'n gedeelte represents the road reserve of a portion van Nasionale Roete R523 of National Route Section	
			Vel Sheet 5 of 13	Plan P866/14

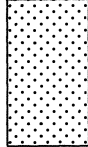


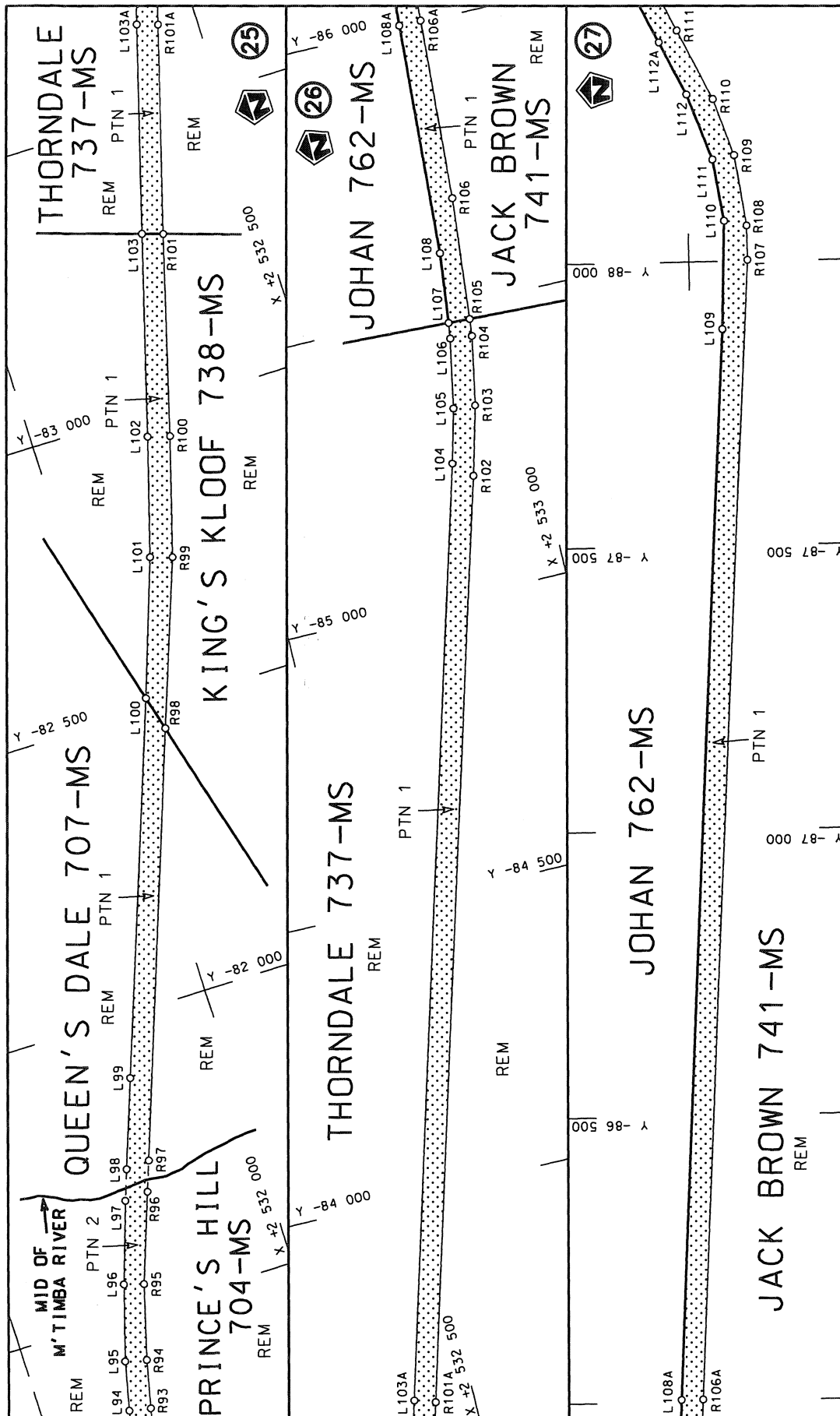
<p>Die Suid Afrikaanse Nasionale Padagentskap Beperk The South African National Roads Agency Limited</p>	<p>Die figuur getoon The figure shown</p>	<p>stelt die padreserwe voor van 'n gedeelte represents the road reserve of a portion van Nasionale Roete R523 of National Route Section</p>
<p>Vel van Sheet 6 of 13</p>	<p>1</p>	<p>Plan P866/14</p>

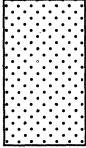


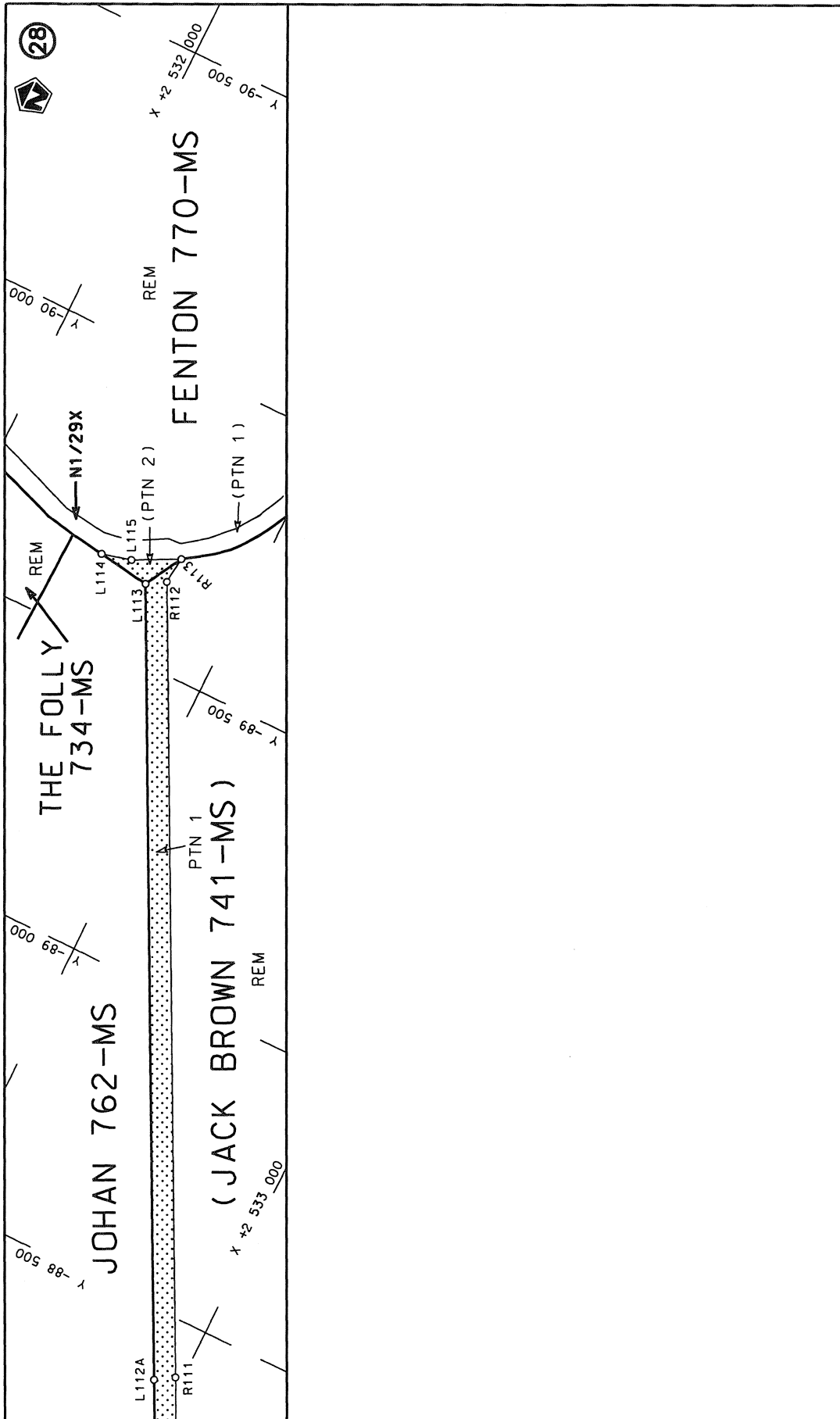
Die Suid Afrikaanse Nasionale Padogentenskap Beperk The South African National Roads Agency Limited	Die figuur getoon The figure shown		steldie padreserwe voor van 'n gedeelte represents the road reserve of a portion van Nasionale Roete R523 Seksie of National Route Section	
			Vel Sheet	van of
			Plan	P866/14



<p>Die Suid Afrikaanse Nasionale Padagentskap Beperk The South African National Roads Agency Limited</p>	<p>Die figuur getoon The figure shown</p> 	<p>steldie padreserwe voor van 'n gedeelte represents the road reserve of a portion van Nasionale Roete R523 of National Route</p> <p style="text-align: right;">Seksie Section</p> <p style="text-align: center;">1</p>	<p>Vel Sheet 8 of 13</p> <p>Plan P866/14</p>
--	---	--	--



<p>Die Suid Afrikaanse Nasionale Padagentskap Beperk The South African National Roads Agency Limited</p>	<p>Die figuur getoon The figure shown</p> 	<p>stelde podreserwe voor van 'n gedeelte represents the road reserve of a portion van Nasionale Roete R523 of National Route</p> <p>1</p>	<p>Vel Sheet 9 of 13</p> <p>Plan P866/14</p>
--	---	--	--



Die Suid Afrikaanse Nasionale Padagentskap Beperk The South African National Roads Agency Limited	Die figuur getoon The figure shown	steeldie padreserwe voor van 'n gedeelte represents the road reserve of a portion van Nasionale Roete R523 Seksie 1 of National Route Section	Vel van Sheet 10 of 13 Plan P866/14
--	---------------------------------------	--	---

PADRESERVE KOÖRDINATE / ROAD RESERVE CO-ORDINATES											
LINKERKANT/LEFT HAND SIDE					REGTERKANT/RIGHT HAND SIDE						
					WG 29°	Y	X				
L1	-26	385.42	2	543	690.38	R1	-26	396.02	2	543	730.80
L2	-26	393.26	2	543	686.48	R2	-30	125.57	2	541	588.57
L3	-26	415.81	2	543	675.29	R3	-30	443.47	2	541	405.72
L4	-30	115.76	2	541	551.05	R4	-30	535.89	2	541	344.17
L5	-30	247.20	2	541	476.50	R5	-32	581.41	2	539	897.13
L6	-30	510.68	2	541	315.25	R6	-34	054.99	2	538	854.61
L7	-30	562.03	2	541	279.66	R7	-34	190.31	2	538	793.84
L8	-32	575.13	2	539	854.87	R8	-34	274.40	2	538	774.73
L9	-34	030.41	2	538	824.90	R9	-37	041.49	2	538	288.94
L10	-34	119.01	2	538	779.63	R10	-37	068.39	2	538	282.88
L11	-34	177.30	2	538	758.47	R11	-37	130.21	2	538	262.90
L12	-34	232.20	2	538	744.75	R12	-37	220.12	2	538	220.61
L13	-37	021.43	2	538	255.46	R13	-37	520.19	2	538	032.52
L14	-37	056.55	2	538	246.96	R14	-37	631.16	2	537	962.39
L15	-37	147.22	2	538	214.87	R15	-38	274.86	2	537	559.20
L16	-37	201.99	2	538	187.74	R16	-38	385.28	2	537	494.73
L17	-37	524.94	2	537	984.99	R17	-38	404.07	2	537	483.90
L18	-38	365.99	2	537	460.35	R18	-38	480.43	2	537	450.77
L19	-38	459.53	2	537	418.81	R19	-38	573.76	2	537	432.67
L20	-38	467.32	2	537	415.40	R20	-39	591.97	2	537	379.74
L21	-38	545.05	2	537	399.69	R21	-41	985.51	2	537	262.01
L22	-38	598.00	2	537	392.50	R22	-42	729.11	2	537	226.01
L23	-39	560.32	2	537	343.97	R23	-43	102.88	2	537	201.23
L24	-41	984.35	2	537	225.11	R24	-43	196.85	2	537	185.92
L25	-42	974.04	2	537	176.99	R25	-43	346.24	2	537	150.87
L26	-43	100.25	2	537	164.13	R26	-44	705.74	2	536	753.71
L27	-43	187.36	2	537	150.15	R27	-45	041.22	2	536	655.42
L28	-43	331.61	2	537	116.30	R28	-45	188.97	2	536	607.36
L29	-43	999.21	2	536	920.76	R29	-45	320.32	2	536	552.50
L30	-44	704.48	2	536	717.41	R30	-46	371.73	2	536	007.08
L31	-44	915.23	2	536	654.17	R31	-48	159.61	2	535	074.28
L32	-45	190.38	2	536	568.54	R32	-48	815.73	2	534	731.20
L33	-45	307.82	2	536	518.16	R33	-48	864.46	2	534	706.05
L34	-46	372.10	2	535	964.57	R34	-50	174.72	2	534	022.94
L35	-48	148.18	2	535	038.53	R35	-50	200.66	2	534	009.07
L36	-48	817.26	2	534	688.68	R36	-50	248.86	2	533	986.20
L37	-48	945.95	2	534	622.38	R37	-50	390.25	2	533	940.64
L38	-50	061.68	2	534	039.28	R38	-50	474.41	2	533	927.51
L39	-50	248.55	2	533	944.15	R39	-50	783.98	2	533	897.06
L40	-50	291.77	2	533	928.86	R40	-53	331.35	2	533	649.98
L41	-50	438.27	2	533	896.46	R41	-53	427.66	2	533	648.16
L42	-50	781.27	2	533	861.64	R42	-53	509.22	2	533	654.58
L43	-53	294.99	2	533	616.68	R43	-54	901.00	2	533	794.20
L44	-53	428.04	2	533	611.50	R44	-55	732.08	2	533	877.58
L45	-54	883.72	2	533	756.00	R45	-56	407.97	2	533	946.03
L46	-55	731.19	2	533	840.00	R46	-57	728.84	2	534	080.09
L47	-56	451.55	2	533	912.84	R47	-60	720.42	2	534	389.27
L48	-57	734.72	2	534	042.84	R48	-60	912.09	2	534	409.37
L49	-60	714.14	2	534	350.52	R49	-61	033.97	2	534	421.14
L50	-60	866.18	2	534	366.73	R50	-61	153.81	2	534	424.31
L51	-61	034.48	2	534	383.36	R51	-62	149.39	2	534	413.64

Vel	11	Van	13	P866/14
Sheet		of		

PADRESERWE KOÖRDINATE / ROAD RESERVE CO-ORDINATES						
LINKERKANT/LEFT HAND SIDE				REGTERKANT/RIGHT HAND SIDE		
	Y	X	WG 29°		Y	X
L52	-61 154.37	2 534	386.68	R52	-62 281.63	2 534 412.26
L53	-62 146.31	2 534	375.75	R53	-62 367.42	2 534 412.44
L54	-62 376.13	2 534	373.68	R54	-62 425.61	2 534 417.44
L55	-62 514.37	2 534	392.28	R55	-62 476.51	2 534 424.35
L56	-62 552.10	2 534	402.75	R56	-62 589.44	2 534 455.26
L57	-62 636.51	2 534	435.53	R57	-62 622.33	2 534 465.65
L58	-62 664.16	2 534	437.86	R58	-62 698.40	2 534 492.04
L59	-62 712.02	2 534	455.68	R59	-62 713.19	2 534 506.04
L60	-62 830.41	2 534	498.36	R60	-62 815.02	2 534 546.10
L61	-62 883.81	2 534	521.10	R61	-62 861.83	2 534 558.23
L62	-62 928.88	2 534	532.23	R62	-62 894.25	2 534 564.04
L63	-63 009.31	2 534	536.00	R63	-62 967.04	2 534 575.56
L64	-63 069.11	2 534	528.01	R64	-63 024.26	2 534 574.73
L65	-63 127.62	2 534	514.66	R65	-63 081.55	2 534 567.86
L66	-63 183.12	2 534	491.55	R66	-63 137.04	2 534 553.98
L67	-63 236.30	2 534	462.86	R67	-63 200.04	2 534 529.31
L68	-63 984.26	2 533	964.47	R68	-63 258.90	2 534 495.30
L69	-63 989.86	2 533	965.47	R69	-63 943.02	2 534 039.23
L70	-64 306.43	2 533	749.58	R70	-63 954.12	2 534 028.75
L71	-64 330.06	2 533	735.02	R71	-64 349.95	2 533 765.65
L72	-64 343.98	2 533	725.34	R72	-64 368.63	2 533 750.08
L73	-64 363.36	2 533	710.53	R73	-64 450.67	2 533 701.35
L74	-64 370.94	2 533	705.33	R74	-64 522.10	2 533 661.30
L75	-64 399.34	2 533	688.71	R75	-64 607.79	2 533 631.72
L76	-64 428.98	2 533	668.49	R76	-64 695.85	2 533 616.12
L77	-64 502.75	2 533	630.13	R77	-65 528.22	2 533 531.21
L78	-64 596.75	2 533	595.55	R78	-66 079.37	2 533 474.64
L79	-64 689.84	2 533	578.98	R79	-66 176.37	2 533 461.56
L80	-65 493.37	2 533	496.93	R80	-66 234.02	2 533 448.91
L81	-66 168.19	2 533	424.69	R81	-69 453.26	2 532 587.96
L82	-66 260.92	2 533	404.99	R82	-70 745.62	2 532 242.50
L83	-69 461.47	2 532	549.32	R83	-71 823.24	2 531 954.60
L84	-70 688.22	2 532	219.30	R84	-72 585.74	2 531 751.77
L85	-71 819.78	2 531	916.80	R85	-72 657.01	2 531 738.63
L86	-72 578.43	2 531	714.37	R86	-72 744.02	2 531 725.62
L87	-72 659.34	2 531	698.68	R87	-74 965.76	2 531 418.19
L88	-74 958.45	2 531	381.46	R88	-77 875.60	2 531 016.93
L89	-77 870.18	2 530	979.23	R89	-77 994.35	2 531 004.35
L90	-77 990.26	2 530	966.65	R90	-78 207.23	2 531 002.13
L91	-78 208.29	2 530	963.96	R91	-78 451.14	2 531 030.00
L92	-78 424.13	2 530	986.57	R92	-78 567.84	2 531 054.92
L93	-78 573.53	2 531	017.83	R93	-81 331.68	2 531 687.31
L94	-81 339.16	2 531	650.30	R94	-81 414.55	2 531 706.36
L95	-81 423.54	2 531	669.49	R95	-81 542.58	2 531 742.11
L96	-81 552.58	2 531	708.37	R96	-81 694.75	2 531 796.85
L97	-81 691.34	2 531	755.13	R97	-81 745.99	2 531 815.52
L98	-81 743.23	2 531	774.05	R98	-82 458.15	2 532 072.55
L99	-81 893.25	2 531	828.49	R99	-82 741.04	2 532 176.27
L100	-82 518.79	2 532	056.22	R100	-82 945.80	2 532 236.36
L101	-82 753.38	2 532	138.20	R101	-83 287.75	2 532 331.70
L102	-82 956.94	2 532	197.95	R102	-85 204.59	2 532 881.60

Vel	12	Van	13	P866/14
Sheet		of		



PADRESERWE KOÖRDINATE / ROAD RESERVE CO-ORDINATES					
LINKERKANT/LEFT HAND SIDE			REGTERKANT/RIGHT HAND SIDE		
	Y	X	WG 29°		
L103	-83 299.17	2 532	295.98	R103	-85 324.23 2 532 913.63
L104	-85 233.96	2 532	851.03	R104	-85 443.72 2 532 936.52
L105	-85 327.95	2 532	875.93	R105	-85 473.75 2 532 939.71
L106	-85 448.18	2 532	898.97	R106	-85 687.26 2 532 960.34
L107	-85 475.43	2 532	902.66	R107	-88 001.86 2 533 101.32
L108	-85 598.10	2 532	917.01	R108	-88 062.19 2 533 101.12
L109	-87 880.90	2 533	055.72	R109	-88 186.45 2 533 081.93
L110	-88 071.39	2 533	062.49	R110	-88 285.37 2 533 047.43
L111	-88 179.24	2 533	044.71	R111	-88 406.89 2 532 987.12
L112	-88 294.22	2 533	001.58	R112	-89 647.09 2 532 364.05
L113	-89 627.38	2 532	332.08	R113	-89 694.39 2 532 369.51
L114	-89 641.12	2 532	240.36		
L115	-89 654.66	2 532	291.78		

Vel	13	Van	13	P866/14
Sheet		of		





Printed by and obtainable from the Government Printer, Bosman Street, Private Bag X85, Pretoria, 0001  
Publications: Tel: (012) 748 6052, 748 6053, 748 6058

Advertisements: Tel: (012) 748 6205, 748 6208, 748 6209, 748 6210, 748 6211

Subscriptions: Tel: (012) 748 6054, 748 6055, 748 6057

Gedruk deur en verkrygbaar by die Staatsdrukker, Bosmanstraat, Privaatsak X85, Pretoria, 0001

Publikasies: Tel: (012) 748 6052, 748 6053, 748 6058

Advertensies: Tel: (012) 748 6205, 748 6208, 748 6209, 748 6210, 748 6211

Subskripsies: Tel: (012) 748 6054, 748 6055, 748 6057