



# Government Gazette Staatskoerant

REPUBLIC OF SOUTH AFRICA  
REPUBLIEK VAN SUID-AFRIKA

Vol. 601

Pretoria, 1 July  
Julie 2015

**No. 38933**

*N.B. The Government Printing Works will not be held responsible for the quality of "Hard Copies" or "Electronic Files" submitted for publication purposes*



**AIDS HELPLINE: 0800-0123-22 Prevention is the cure**

**DISCLAIMER:**

Government Printing Works reserves the right to apply the 25% discount to all Legal and Liquor notices that comply with the business rules for notice submissions for publication in gazettes.

National, Provincial, Road Carrier Permits and Tender notices will pay the price as published in the Government Gazettes.

For any information, please contact the eGazette Contact Centre on 012-748 6200 or email [info.egazette@gpw.gov.za](mailto:info.egazette@gpw.gov.za)

**CONTENTS****INHOUD**

<i>No.</i>	<i>Page No.</i>	<i>Gazette No.</i>	<i>No.</i>	<i>Bladsy No.</i>	<i>Koerant No.</i>
<b>GOVERNMENT NOTICE</b>			<b>GOEWERMENTSKENNISGEWING</b>		
<b>Transport, Department of</b>			<b>Vervoer, Departement van</b>		
<i>Government Notice</i>			<i>Goewermentskennisgewing</i>		
552 South African National Roads Agency Limited and National Roads Act (7/1998): Declaration amendment of National Road R38 Section 5 .....	3	38933	552 Wet op die Suid-Afrikaanse Nasionale Padagentskap Beperk en op Nasionale Paaie (7/1998): Verklaring wysiging van Nasionale Pad R38 Seksie 5 .....	4	38933

---

## GOVERNMENT NOTICE

---

### DEPARTMENT OF TRANSPORT

No. 552

1 July 2015

## THE SOUTH AFRICAN NATIONAL ROADS AGENCY SOC LIMITED

Registration No: 1998/009584/30

### DECLARATION AMENDMENT OF NATIONAL ROAD R38 SECTION 5

AMENDMENT OF DECLARATION NO. 176 OF 2007.

By virtue of section 40(1)(b) of The South African National Roads Agency Limited and National Roads Act, 1998 (Act No. 7 of 1998), I hereby amend Declaration No. 176 of 2007 by substituting Annexure paragraph (v), with the subjoined sheets 1 to 21 of Plan No. P802/11.

**(National Road R38 Section 5: Badplaas - Barberton)**



---

MINISTER OF TRANSPORT

---

## GOEWERMENSKENNISGEWING

---

### DEPARTEMENT VAN VERVOER

No. 552

1 Julie 2015

## DIE SUID-AFRIKAANSE NASIONALE PADAGENTSKAP MSB BEPERK

Registrasie No: 1998/009584/30

### VERKLARING WYSIGING VAN NASIONALE PAD R38 SEKSIE 5

WYSIGING VAN VERKLARING NO. 176 VAN 2007.

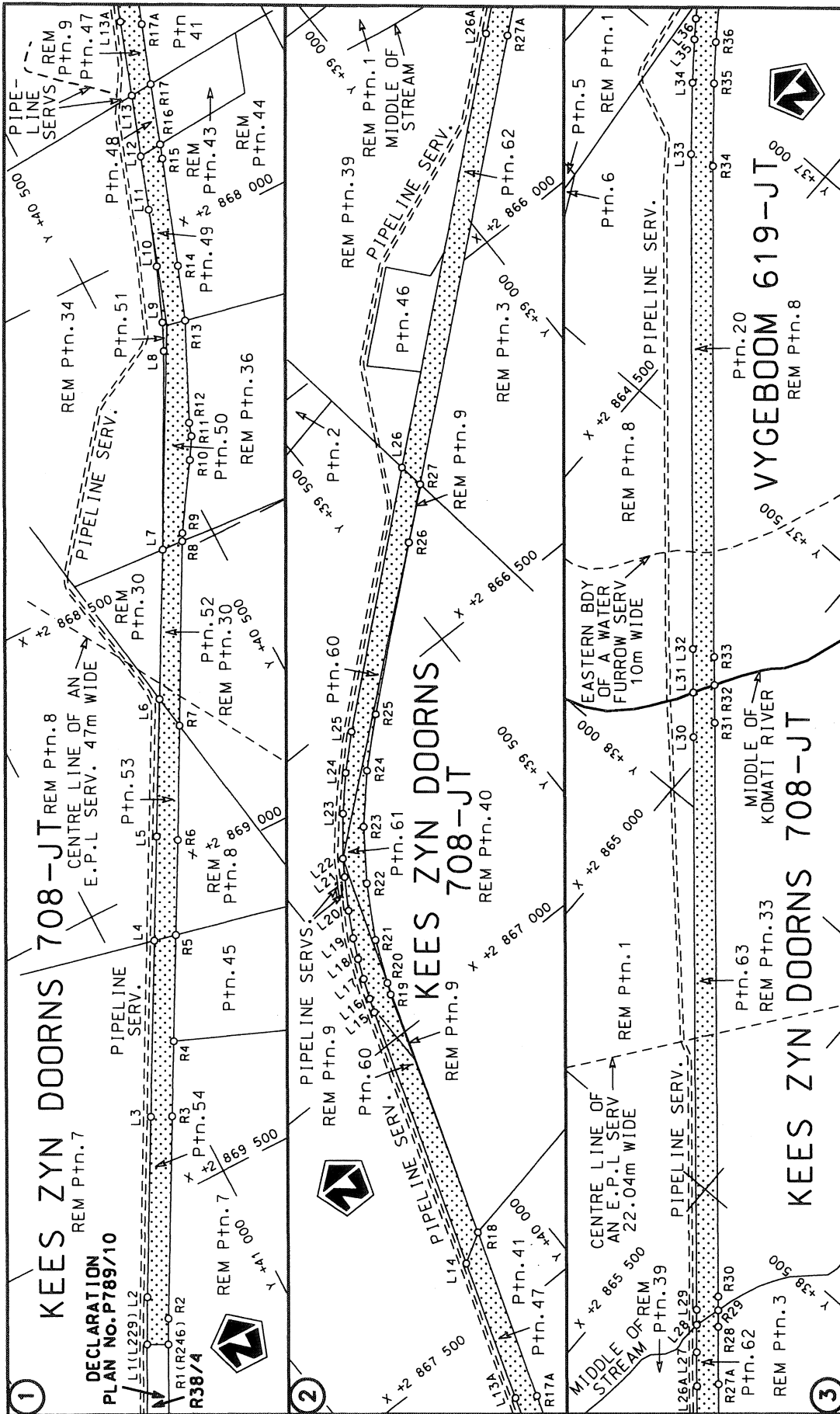
Kragtens Artikel 40(1)(b) van die Wet op die Suid Afrikaanse Nasionale Padagentskap Beperk en op Nasionale Paaie, 1998 (Wet no.7 van 1998), wysig ek hiermee Verklaring no. 176 van 2007 deur Bylae paragraaf (v), te vervang met die meegaande velle 1 tot 21 van Plan no. P802/11.

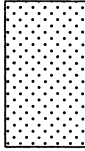
**(Nasionale Pad R38 Seksie 5: Badplaas – Barberton)**

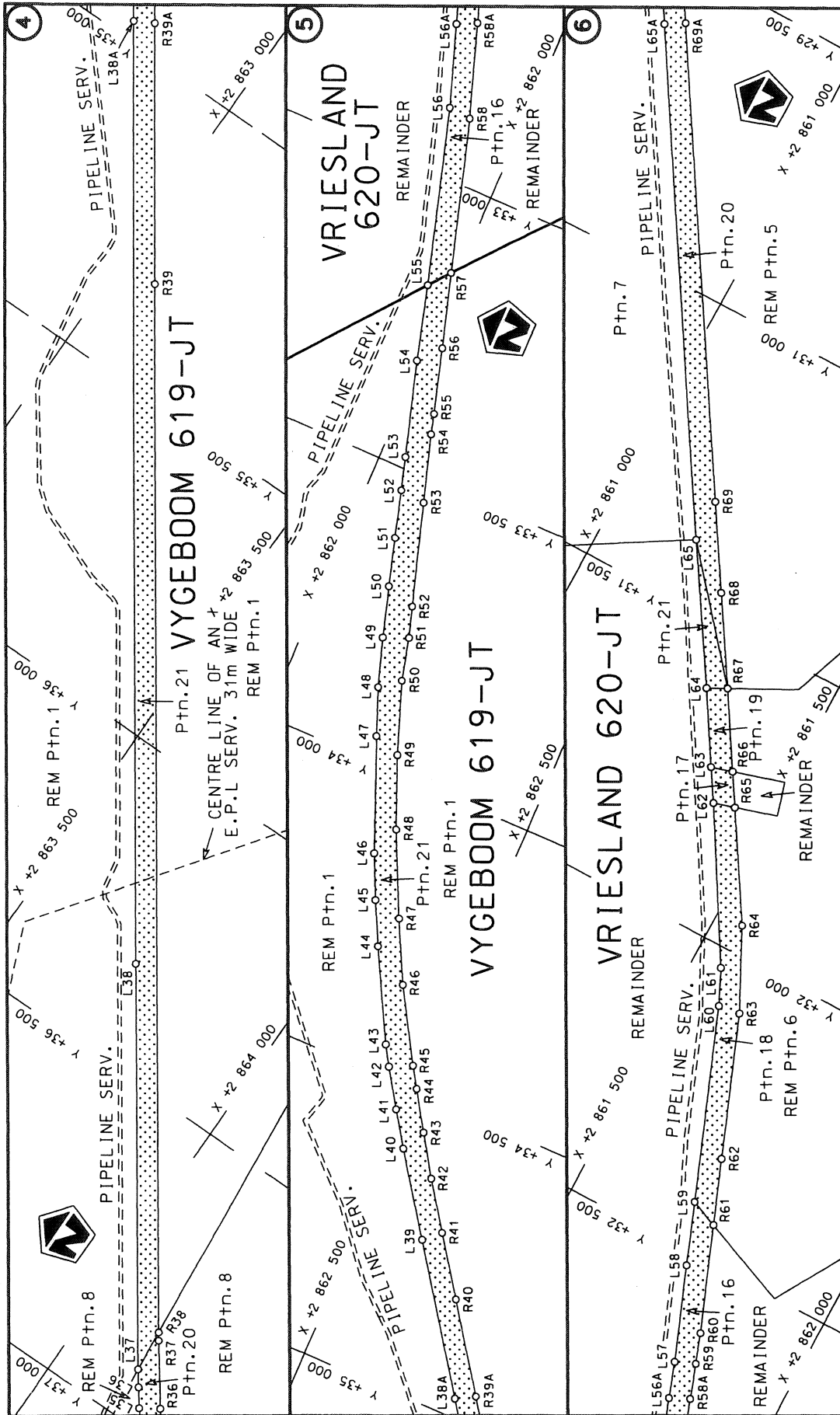


---

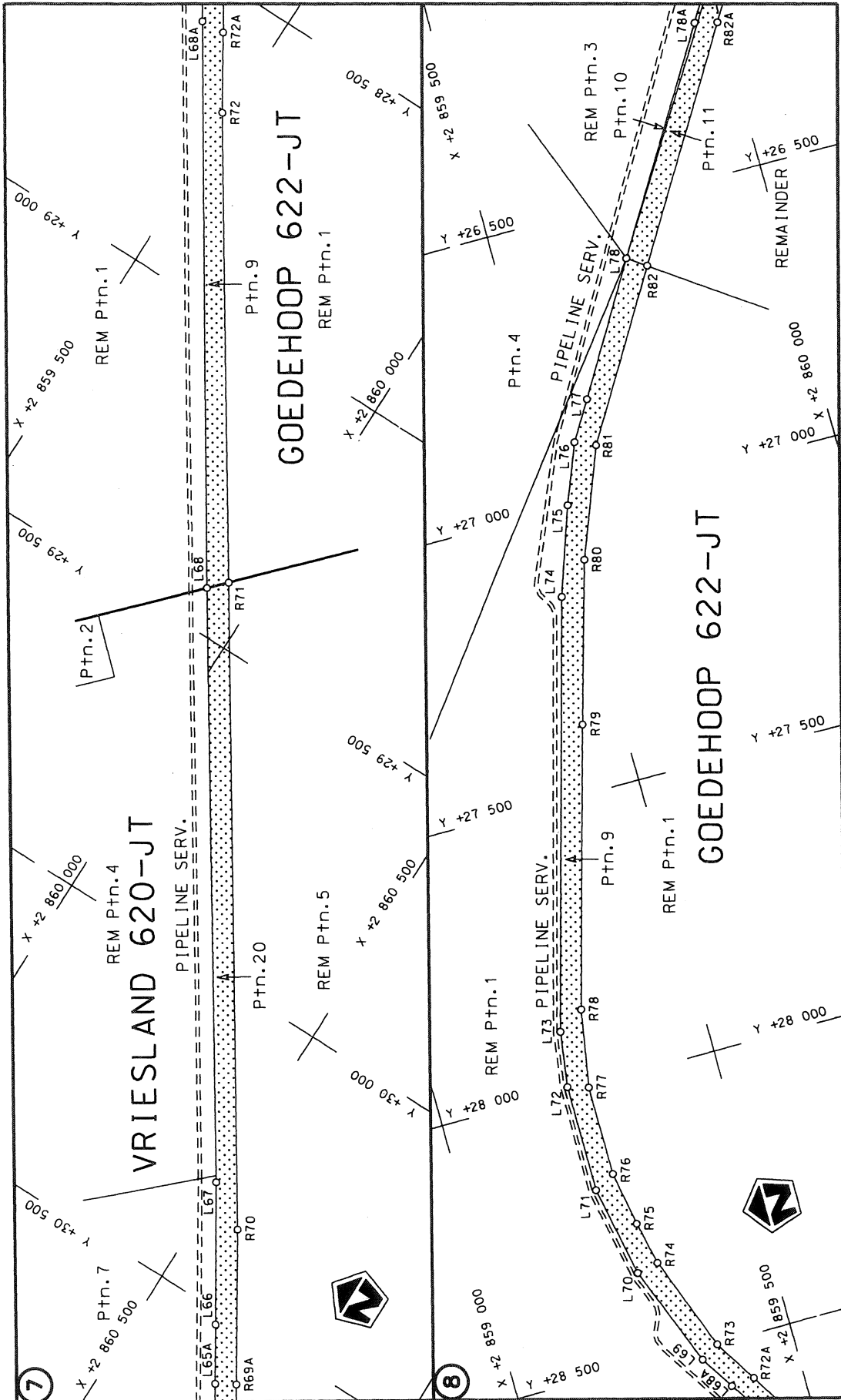
MINISTER VAN VERVOER



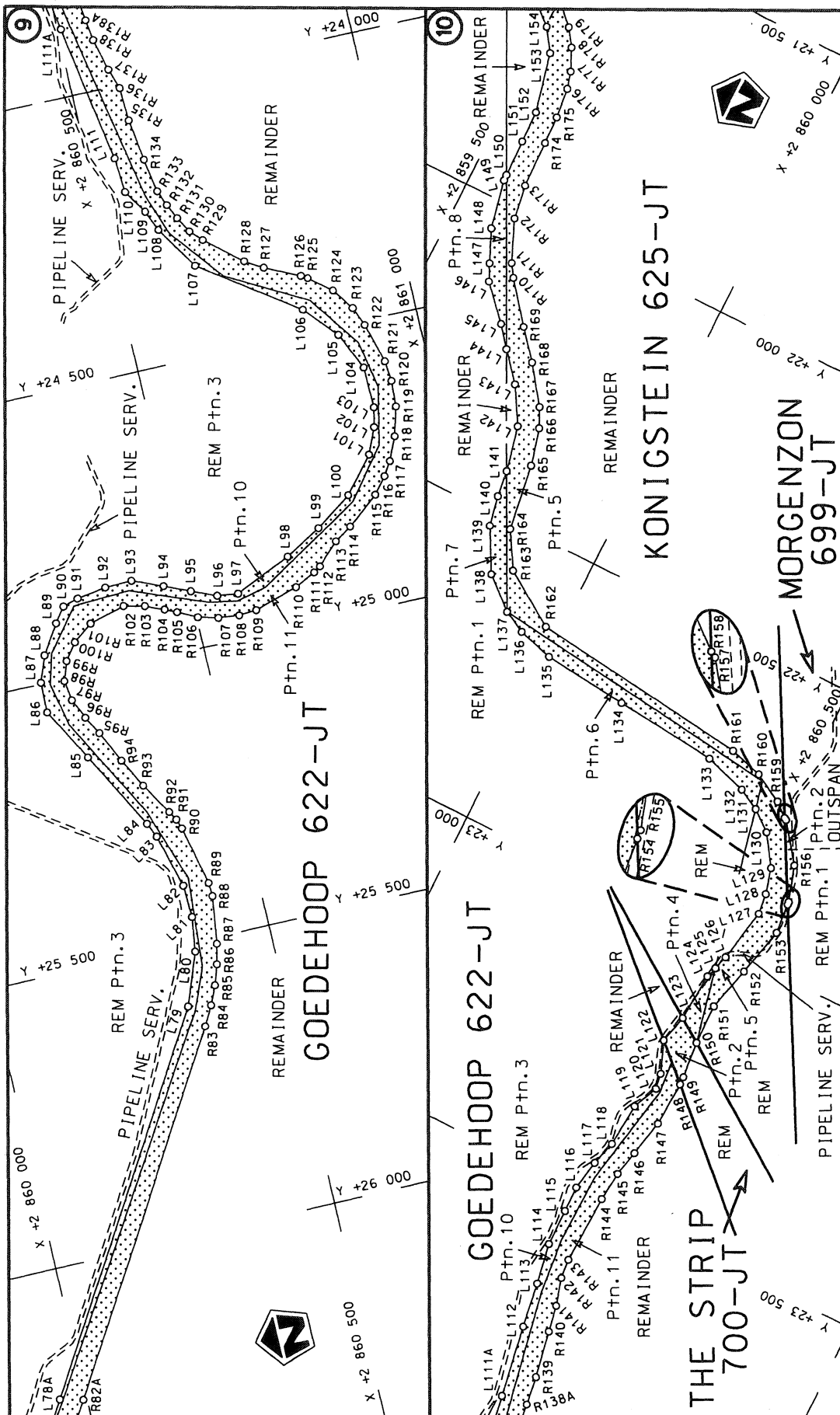
Die Suid Afrikaanse Nasionale Padagentskap Beperk The South African National Roads Agency Limited	Die figuur getoon The figure shown		stelde padreserwe voor van 'n gedeelte represents the road reserve of a portion van Nasionale Roete R38 of National Route Section	
			Vel Sheet 1 of 21	Plan P802/11



<p>Die Suid Afrikaanse Nasionale Padagatskap Beperk The South African National Roads Agency Limited</p>	<p>Die figuur getoon The figure shown</p> <p>steldie padreserwe voor van 'n gedeelte represents the road reserve of a portion van Nasionale Roete R38 of National Route</p>	<p>Vel Sheet 2 of 21 Plan P802/11</p>
---	---	---

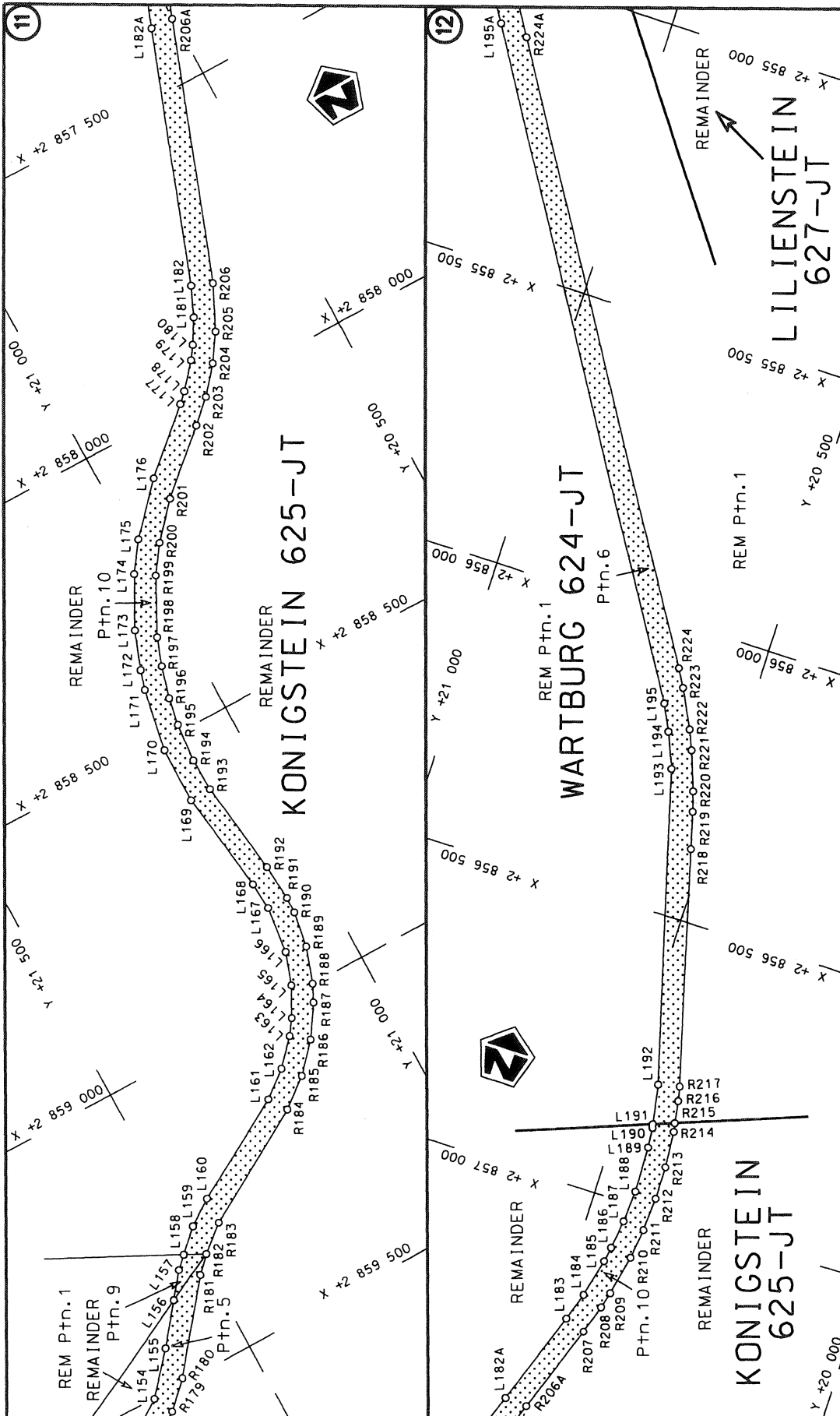


Vel Sheet 3 of 21 Plan P802/11	steldie padreserwe voor van 'n gedeelte represents the road reserve of a portion van Nasionale Roete R38 Seksie Section of National Route	Die figuur getoon The figure shown Die Suid Afrikaanse Nasionale Padagentskap Beperk The South African National Roads Agency Limited
-----------------------------------	---	---

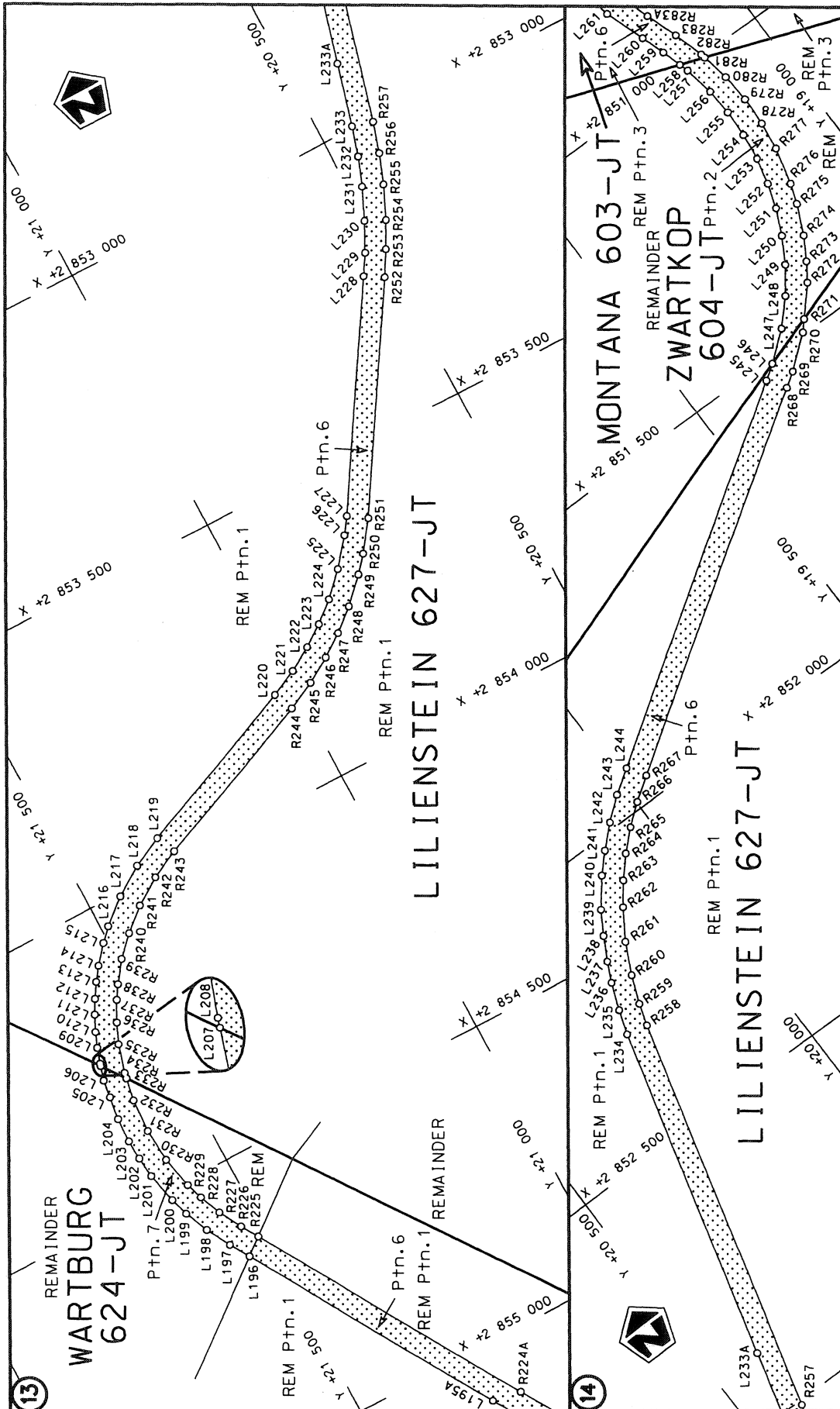


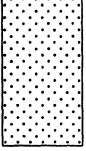
Die Suid Afrikaanse Nasionale Padagentskap Beperk The South African National Roads Agency Limited	Die figuur getoon The figure shown		stelde padreserwe voor van 'n gedeelte represents the road reserve of a portion	
			van Nasionale Roete R38 of National Route	Seksie 5 Section
		Vel Sheet 4 of 21 Plan P802/11		

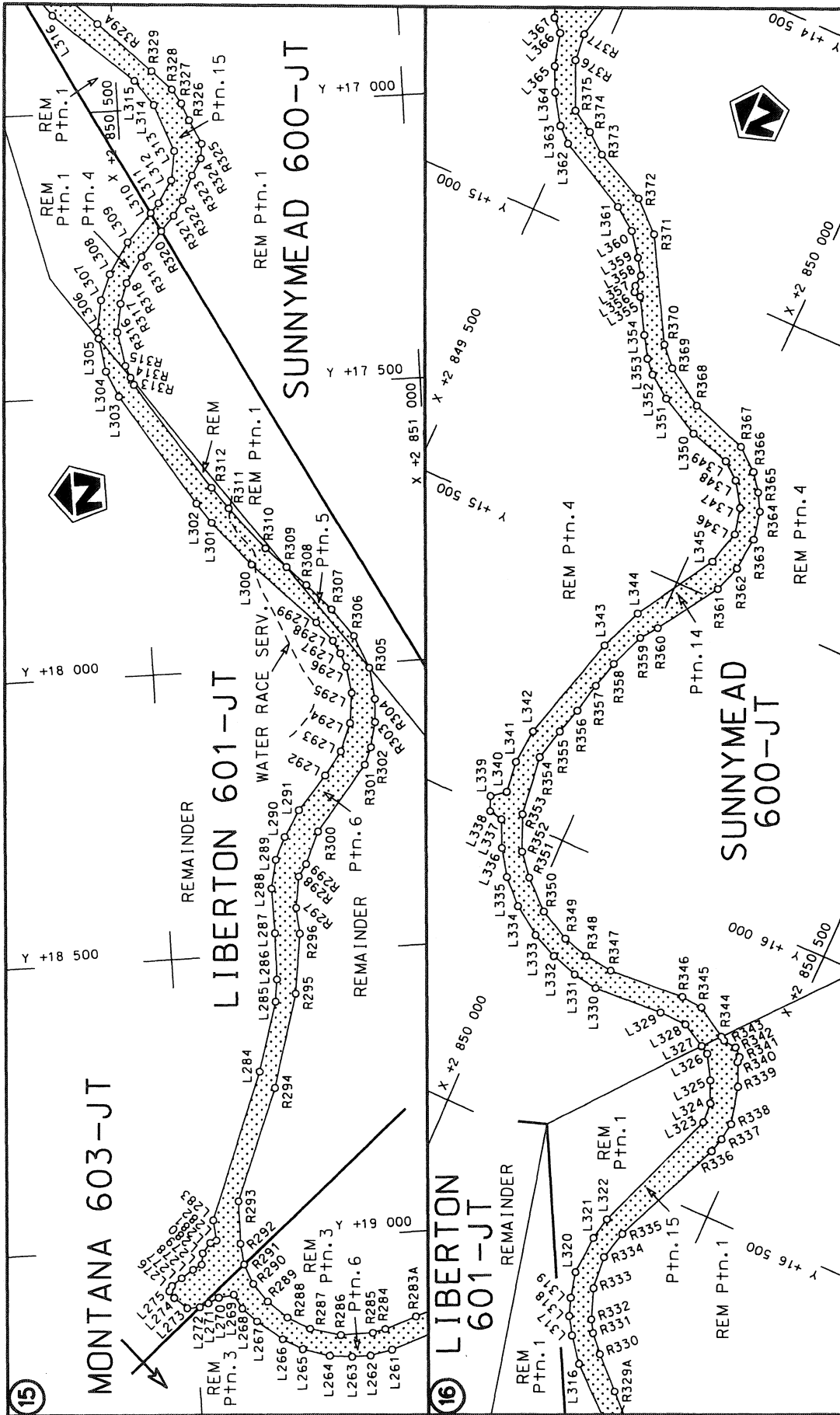





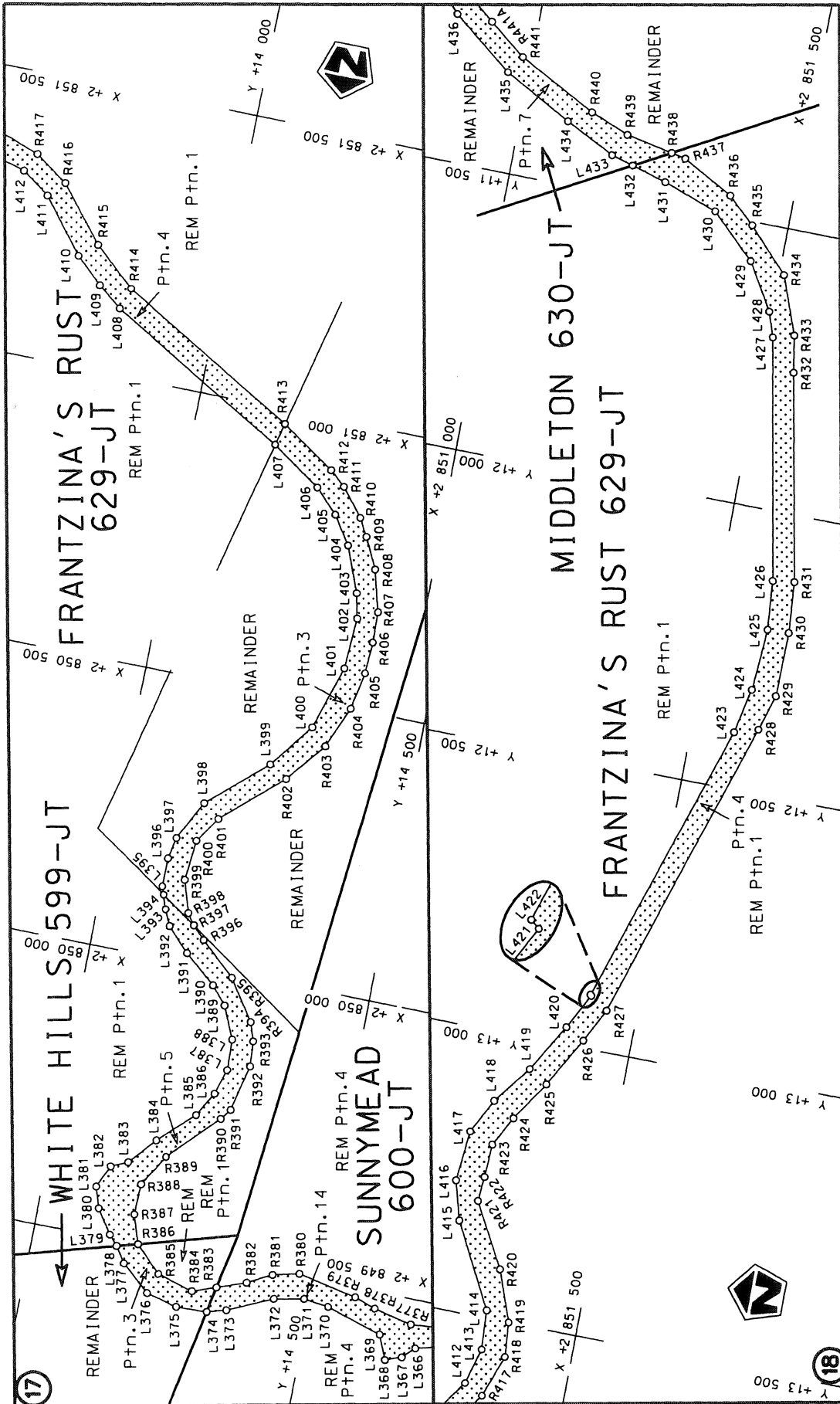
Die Suid Afrikaanse Nasionale Padagentskap Beperk The South African National Roads Agency Limited	Die figuur getoon The figure shown		stede padreserwe voor van 'n gedeelte represents the road reserve of a portion van Nasionale Roete R38 of National Route Section	Vel Sheet 5 of 21 Plan P802/11
	5			5



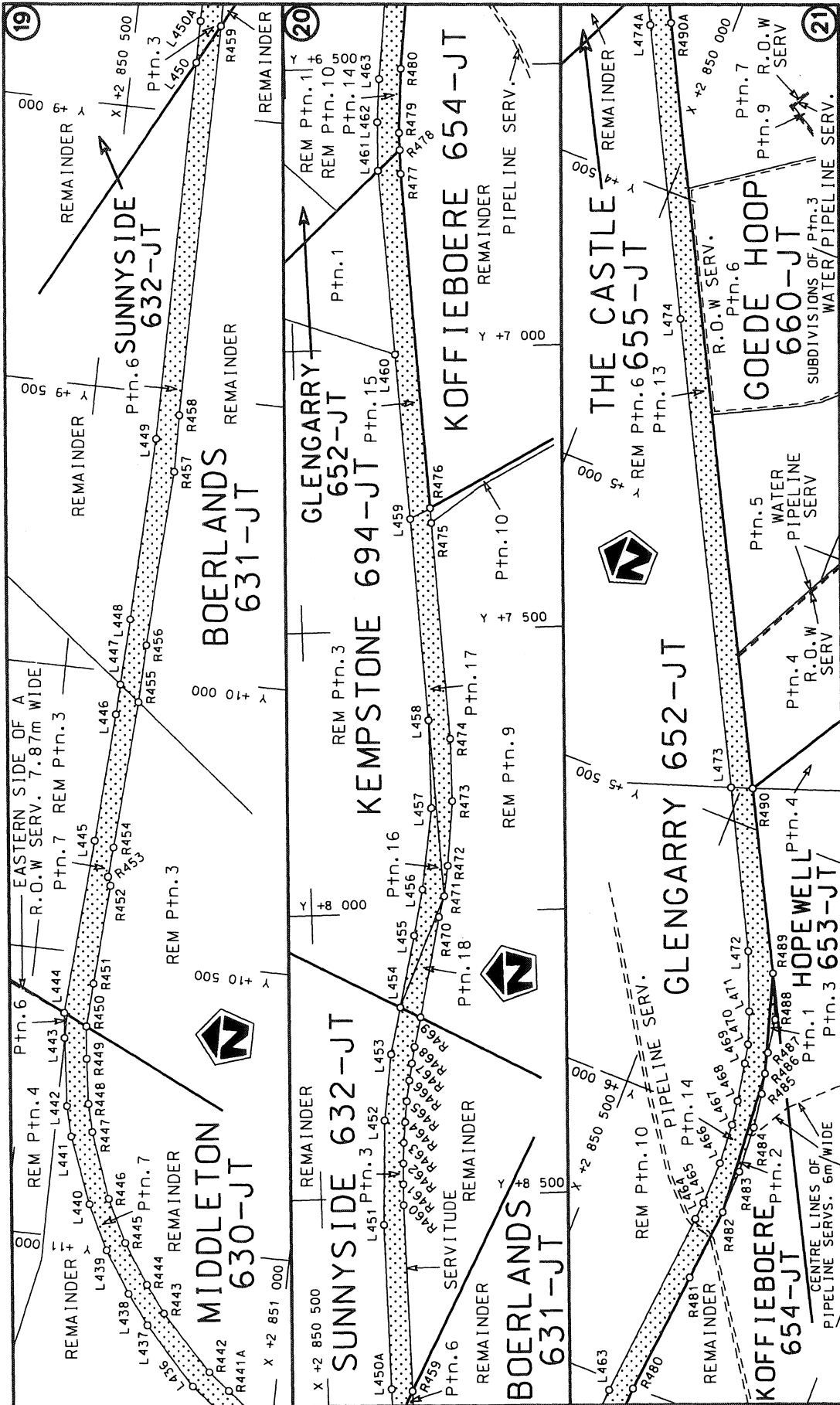
Die Suid Afrikaanse Nasionale Padagentskap Beperk The South African National Roads Agency Limited	Die figuur getoon The figure shown		steldie padreserwe voor van 'n gedeelte represents the road reserve of a portion van Nasionale Roete R38 of National Route Section	Vel Sheet	van of	21
				Plan	P802/11	




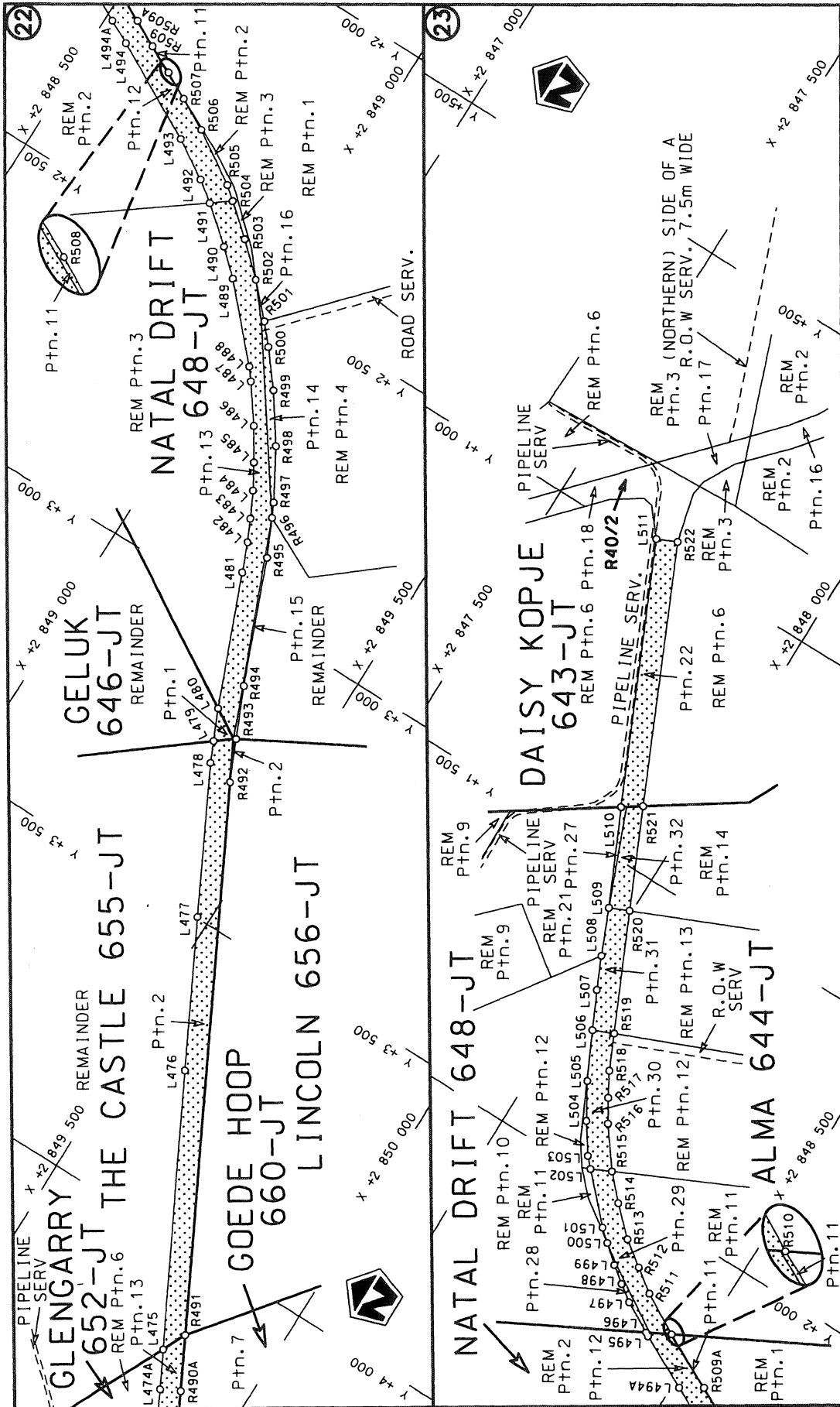
Die Suid Afrikaanse Nasionale Padagentskap Beperk The South African National Roads Agency Limited	Die figuur getoon The figure shown		stelt die padreserwe voor van 'n gedeelte represents the road reserve of a portion van Nasionale Roete R38 of National Route	
			5	Seksie Section
		Vel Sheet	7 of	21
		Plan P802/11		

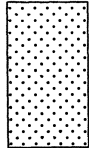


<p>Die Suid Afrikaanse Nasionale Padagentskap Beperk The South African National Roads Agency Limited</p>	<p>Die figuur getoon The figure shown</p>	<p>steldie padreserwe voor van 'n gedeelte represents the road reserve of a portion van Nasionale Roete R38 Sektie of National Route R38 Section</p>	<p>Vel Sheet 8 of 21</p> <p>Plan P802/11</p>
--	---	--	--



Die Suid Afrikaanse Nasionale Padagentskap Beperk The South African National Roads Agency Limited	Die figuur getoon The figure shown		steldie padreserwe voor van 'n gedeelte represents the road reserve of a portion van Nasionale Roete R38 of National Route Section	
			5	Plan P802/11
		Vel Sheet 9 of 21		



Die Suid Afrikaanse Nasionale Padagentskap Beperk The South African National Roads Agency Limited	Die figuur getoon The figure shown		steldie padreserwe voor van 'n gedeelte represents the road reserve of a portion van Nasionale Roete R38 of National Route Section	Vel Sheet 10 of 21
				Plan P802/11

PADRESERWE KOÖRDINATE / ROAD RESERVE CO-ORDINATES						
LINKERKANT/LEFT HAND SIDE				REGTERKANT/RIGHT HAND SIDE		
	Y	X	WG 31°		Y	X
L1	41 257.29	2 869	707.48	R1	41 224.05	2 869 724.65
L2	41 219.35	2 869	634.60	R2	41 203.40	2 869 684.46
L3	41 069.22	2 869	359.01	R3	41 035.46	2 869 375.21
L4	40 920.77	2 869	086.56	R4	40 972.25	2 869 259.70
L5	40 833.77	2 868	926.87	R5	40 882.74	2 869 095.17
L6	40 718.04	2 868	713.97	R6	40 803.50	2 868 949.20
L7	40 591.98	2 868	482.04	R7	40 708.31	2 868 771.44
L8	40 428.65	2 868	170.51	R8	40 554.77	2 868 484.70
L9	40 407.66	2 868	124.63	R9	40 547.91	2 868 471.90
L10	40 371.53	2 868	032.25	R10	40 476.77	2 868 363.21
L11	40 337.77	2 867	936.49	R11	40 454.78	2 868 326.73
L12	40 307.84	2 867	846.84	R12	40 447.59	2 868 303.76
L13	40 273.88	2 867	745.12	R13	40 370.82	2 868 139.66
L14	40 152.70	2 867	383.20	R14	40 337.95	2 868 047.97
L15	40 003.22	2 866	939.80	R15	40 275.66	2 867 867.43
L16	39 994.53	2 866	915.88	R16	40 267.94	2 867 843.79
L17	39 981.10	2 866	881.49	R17	40 234.77	2 867 742.26
L18	39 966.79	2 866	848.23	R18	40 102.50	2 867 353.60
L19	39 950.56	2 866	814.88	R19	39 961.07	2 866 933.11
L20	39 927.18	2 866	772.40	R20	39 952.72	2 866 913.59
L21	39 896.04	2 866	722.01	R21	39 921.88	2 866 841.46
L22	39 878.28	2 866	694.86	R22	39 872.22	2 866 754.88
L23	39 828.75	2 866	632.89	R23	39 814.62	2 866 673.60
L24	39 779.65	2 866	579.39	R24	39 747.57	2 866 599.53
L25	39 726.34	2 866	529.31	R25	39 673.76	2 866 531.64
L26	39 365.45	2 866	220.22	R26	39 439.14	2 866 331.09
L27	38 726.72	2 865	672.39	R27	39 359.28	2 866 262.85
L28	38 690.27	2 865	641.32	R28	38 668.47	2 865 672.35
L29	38 670.16	2 865	624.18	R29	38 646.62	2 865 653.68
L30	37 905.65	2 864	968.78	R30	38 628.53	2 865 638.23
L31	37 845.92	2 864	917.63	R31	37 862.17	2 864 980.83
L32	37 787.53	2 864	867.63	R32	37 811.77	2 864 937.24
L33	37 122.79	2 864	297.55	R33	37 774.27	2 864 904.81
L34	37 026.39	2 864	217.73	R34	37 113.83	2 864 339.87
L35	36 965.64	2 864	170.65	R35	37 002.85	2 864 247.16
L36	36 936.35	2 864	148.81	R36	36 945.16	2 864 202.35
L37	36 911.05	2 864	130.63	R37	36 848.68	2 864 132.17
L38	36 330.55	2 863	724.86	R38	36 836.52	2 864 123.67
L39	34 733.45	2 862	611.11	R39	35 326.43	2 863 070.48
L40	34 600.49	2 862	518.26	R40	34 806.26	2 862 707.50
L41	34 542.71	2 862	479.71	R41	34 707.94	2 862 639.02
L42	34 479.38	2 862	438.83	R42	34 628.88	2 862 583.84
L43	34 445.73	2 862	418.77	R43	34 560.66	2 862 540.14
L44	34 293.76	2 862	338.72	R44	34 495.10	2 862 498.87
L45	34 220.02	2 862	302.27	R45	34 460.50	2 862 476.96
L46	34 144.89	2 862	267.75	R46	34 338.27	2 862 405.56
L47	33 954.91	2 862	190.47	R47	34 234.05	2 862 353.23
L48	33 874.91	2 862	159.25	R48	34 091.34	2 862 286.32
L49	33 790.74	2 862	131.95	R49	33 971.00	2 862 237.28
L50	33 703.07	2 862	106.15	R50	33 847.67	2 862 193.15
L51	33 620.04	2 862	082.29	R51	33 772.98	2 862 174.39

Vel	11	Van	21	P802/11
Sheet		of		

PADRESERWE KOÖRDINATE / ROAD RESERVE CO-ORDINATES						
LINKERKANT/LEFT HAND SIDE				REGTERKANT/RIGHT HAND SIDE		
	Y	X	WG 31°		Y	X
L52	33 536.97	2 862 058.80		R52	33 719.59	2 862 158.04
L53	33 480.04	2 862 042.36		R53	33 541.50	2 862 103.75
L54	33 317.31	2 861 994.67		R54	33 425.69	2 862 068.26
L55	33 187.10	2 861 958.93		R55	33 390.68	2 862 059.17
L56	32 882.22	2 861 869.84		R56	33 279.79	2 862 027.00
L57	32 682.80	2 861 801.70		R57	33 150.61	2 861 988.69
L58	32 522.10	2 861 740.52		R58	32 885.93	2 861 910.12
L59	32 416.93	2 861 701.13		R59	32 668.24	2 861 836.21
L60	32 094.41	2 861 578.27		R60	32 616.45	2 861 818.09
L61	32 034.01	2 861 550.44		R61	32 437.12	2 861 749.04
L62	31 782.89	2 861 401.97		R62	32 328.55	2 861 707.25
L63	31 729.54	2 861 369.14		R63	32 089.22	2 861 615.76
L64	31 610.72	2 861 297.27		R64	31 950.92	2 861 547.96
L65	31 387.38	2 861 158.20		R65	31 772.01	2 861 438.27
L66	30 521.44	2 860 625.45		R66	31 718.66	2 861 405.57
L67	30 308.23	2 860 492.68		R67	31 593.89	2 861 329.71
L68	29 426.03	2 859 918.63		R68	31 449.63	2 861 240.56
L69	28 519.49	2 859 333.42		R69	31 311.25	2 861 155.79
L70	28 342.49	2 859 263.29		R70	30 358.89	2 860 568.80
L71	28 181.65	2 859 232.30		R71	29 397.52	2 859 945.47
L72	27 993.14	2 859 232.75		R72	28 696.93	2 859 488.20
L73	27 895.54	2 859 247.15		R73	28 500.55	2 859 365.92
L74	27 151.67	2 859 456.57		R74	28 334.15	2 859 301.92
L75	26 996.67	2 859 509.95		R75	28 257.77	2 859 285.36
L76	26 890.92	2 859 551.80		R76	28 161.97	2 859 268.28
L77	26 822.54	2 859 593.27		R77	28 003.77	2 859 268.86
L78	26 599.18	2 859 726.58		R78	27 867.25	2 859 292.86
L79	25 606.89	2 860 329.60		R79	27 379.29	2 859 431.17
L80	25 515.82	2 860 363.42		R80	27 099.02	2 859 512.40
L81	25 455.73	2 860 372.10		R81	26 906.05	2 859 586.77
L82	25 398.54	2 860 370.32		R82	26 621.52	2 859 758.75
L83	25 304.96	2 860 344.59		R83	25 647.51	2 860 350.26
L84	25 279.35	2 860 332.97		R84	25 613.65	2 860 368.83
L85	25 143.64	2 860 260.23		R85	25 580.82	2 860 383.47
L86	25 050.89	2 860 208.59		R86	25 546.11	2 860 395.25
L87	24 997.68	2 860 210.23		R87	25 511.00	2 860 403.53
L88	24 951.59	2 860 227.35		R88	25 427.37	2 860 415.26
L89	24 901.01	2 860 260.05		R89	25 403.78	2 860 414.04
L90	24 875.00	2 860 279.16		R90	25 300.81	2 860 390.73
L91	24 866.82	2 860 306.71		R91	25 283.58	2 860 385.11
L92	24 858.74	2 860 357.50		R92	25 267.79	2 860 375.94
L93	24 857.19	2 860 404.21		R93	25 213.21	2 860 341.67
L94	24 879.15	2 860 456.78		R94	25 161.96	2 860 315.15
L95	24 898.25	2 860 500.87		R95	25 106.54	2 860 288.85
L96	24 916.01	2 860 544.01		R96	25 074.97	2 860 271.63
L97	24 920.54	2 860 580.33		R97	25 039.49	2 860 256.08
L98	24 876.60	2 860 680.38		R98	25 003.73	2 860 250.77
L99	24 838.17	2 860 744.88		R99	24 969.74	2 860 262.84
L100	24 793.58	2 860 809.27		R100	24 940.68	2 860 284.50
L101	24 732.56	2 860 860.98		R101	24 914.77	2 860 318.54
L102	24 687.49	2 860 880.68		R102	24 897.50	2 860 380.70

Vel	12	Van	21	P802/11
Sheet		of		



PADRESERWE KOÖRDINATE / ROAD RESERVE CO-ORDINATES						
LINKERKANT/LEFT HAND SIDE				REGTERKANT/RIGHT HAND SIDE		
	Y	X	WG 31°		Y	X
L103	24 653.40	2 860	888.33	R103	24 905.77	2 860 416.58
L104	24 581.30	2 860	886.91	R104	24 919.44	2 860 449.36
L105	24 514.90	2 860	856.64	R105	24 928.61	2 860 469.50
L106	24 457.42	2 860	805.89	R106	24 945.45	2 860 502.51
L107	24 339.68	2 860	639.40	R107	24 954.46	2 860 537.22
L108	24 263.54	2 860	591.94	R108	24 958.22	2 860 573.72
L109	24 227.10	2 860	576.35	R109	24 955.84	2 860 605.11
L110	24 185.72	2 860	550.18	R110	24 932.28	2 860 682.00
L111	24 123.50	2 860	546.06	R111	24 914.04	2 860 719.30
L112	23 756.48	2 860	485.33	R112	24 905.68	2 860 731.67
L113	23 677.67	2 860	473.88	R113	24 868.44	2 860 769.20
L114	23 605.70	2 860	461.21	R114	24 848.23	2 860 800.03
L115	23 541.80	2 860	461.18	R115	24 803.11	2 860 855.59
L116	23 496.21	2 860	460.76	R116	24 775.31	2 860 878.86
L117	23 443.00	2 860	470.43	R117	24 751.61	2 860 893.98
L118	23 399.83	2 860	482.61	R118	24 710.94	2 860 911.99
L119	23 322.46	2 860	488.90	R119	24 660.39	2 860 926.42
L120	23 278.26	2 860	508.38	R120	24 614.79	2 860 929.01
L121	23 251.17	2 860	503.96	R121	24 578.76	2 860 925.52
L122	23 195.53	2 860	482.87	R122	24 508.18	2 860 905.54
L123	23 144.76	2 860	495.39	R123	24 473.99	2 860 892.21
L124	23 059.61	2 860	501.85	R124	24 435.93	2 860 865.41
L125	23 040.54	2 860	507.80	R125	24 404.73	2 860 826.63
L126	23 015.14	2 860	515.72	R126	24 398.20	2 860 815.83
L127	22 920.19	2 860	533.22	R127	24 369.85	2 860 755.95
L128	22 883.39	2 860	529.23	R128	24 351.10	2 860 724.90
L129	22 838.70	2 860	517.28	R129	24 298.25	2 860 662.49
L130	22 786.12	2 860	482.31	R130	24 277.97	2 860 643.53
L131	22 758.35	2 860	446.86	R131	24 250.48	2 860 628.41
L132	22 739.13	2 860	409.98	R132	24 224.25	2 860 616.20
L133	22 716.12	2 860	335.11	R133	24 196.97	2 860 605.24
L134	22 698.48	2 860	153.00	R134	24 136.98	2 860 595.17
L135	22 682.36	2 860	003.19	R135	24 063.73	2 860 584.68
L136	22 664.74	2 859	940.89	R136	24 005.25	2 860 582.12
L137	22 644.35	2 859	902.04	R137	23 969.36	2 860 570.49
L138	22 598.11	2 859	847.96	R138	23 913.15	2 860 556.59
L139	22 521.22	2 859	806.73	R139	23 825.67	2 860 544.86
L140	22 468.38	2 859	796.15	R140	23 743.83	2 860 529.82
L141	22 422.01	2 859	790.63	R141	23 697.35	2 860 521.12
L142	22 342.88	2 859	772.81	R142	23 649.70	2 860 507.52
L143	22 278.70	2 859	735.49	R143	23 615.15	2 860 504.09
L144	22 230.01	2 859	694.41	R144	23 494.29	2 860 509.55
L145	22 194.04	2 859	665.85	R145	23 442.40	2 860 514.72
L146	22 136.64	2 859	613.23	R146	23 396.57	2 860 524.94
L147	22 107.18	2 859	599.73	R147	23 331.51	2 860 538.78
L148	22 050.38	2 859	574.36	R148	23 252.31	2 860 543.29
L149	21 964.20	2 859	556.52	R149	23 238.43	2 860 542.64
L150	21 954.22	2 859	556.23	R150	23 173.11	2 860 536.40
L151	21 888.27	2 859	554.31	R151	23 101.34	2 860 534.92
L152	21 831.79	2 859	552.53	R152	23 023.19	2 860 555.36
L153	21 727.69	2 859	528.14	R153	22 936.07	2 860 576.79

Vel	13	Van	21	P802/11
Sheet		of		

PADRESERWE KOÖRDINATE / ROAD RESERVE CO-ORDINATES						
LINKERKANT/LEFT HAND SIDE				REGTERKANT/RIGHT HAND SIDE		
	Y	X	WG 31°		Y	X
L154	21 688.88	2 859	501.38	R154	22 882.55	2 860 571.74
L155	21 628.87	2 859	433.34	R155	22 877.29	2 860 571.24
L156	21 576.17	2 859	366.79	R156	22 815.98	2 860 551.51
L157	21 543.05	2 859	324.97	R157	22 751.25	2 860 503.31
L158	21 522.55	2 859	305.46	R158	22 749.02	2 860 499.79
L159	21 485.30	2 859	270.00	R159	22 728.94	2 860 475.60
L160	21 441.11	2 859	238.88	R160	22 701.67	2 860 424.80
L161	21 263.55	2 859	137.23	R161	22 685.28	2 860 366.07
L162	21 217.65	2 859	101.94	R162	22 637.37	2 859 974.46
L163	21 178.06	2 859	059.50	R163	22 575.06	2 859 879.23
L164	21 159.88	2 859	034.12	R164	22 510.47	2 859 841.28
L165	21 132.92	2 858	984.08	R165	22 394.36	2 859 824.77
L166	21 113.92	2 858	927.71	R166	22 328.79	2 859 808.00
L167	21 103.88	2 858	845.38	R167	22 295.17	2 859 792.02
L168	21 106.93	2 858	796.19	R168	22 230.92	2 859 745.25
L169	21 129.93	2 858	614.89	R169	22 180.72	2 859 703.52
L170	21 127.73	2 858	515.43	R170	22 111.29	2 859 648.47
L171	21 108.16	2 858	407.15	R171	22 089.22	2 859 634.18
L172	21 098.19	2 858	373.63	R172	22 016.16	2 859 603.09
L173	21 073.39	2 858	308.00	R173	21 956.18	2 859 593.76
L174	21 026.37	2 858	219.69	R174	21 872.60	2 859 591.18
L175	20 990.53	2 858	168.70	R175	21 823.17	2 859 589.20
L176	20 913.96	2 858	085.03	R176	21 770.14	2 859 583.15
L177	20 811.21	2 857	993.51	R177	21 740.32	2 859 574.66
L178	20 794.49	2 857	976.90	R178	21 701.79	2 859 556.84
L179	20 758.87	2 857	934.61	R179	21 672.10	2 859 536.28
L180	20 743.36	2 857	912.42	R180	21 628.11	2 859 492.68
L181	20 719.25	2 857	871.33	R181	21 515.03	2 859 350.24
L182	20 696.44	2 857	820.39	R182	21 488.30	2 859 322.75
L183	20 480.59	2 857	224.35	R183	21 443.42	2 859 285.73
L184	20 464.37	2 857	175.75	R184	21 242.66	2 859 168.67
L185	20 447.57	2 857	108.64	R185	21 192.18	2 859 129.80
L186	20 442.77	2 857	082.47	R186	21 148.27	2 859 082.75
L187	20 435.99	2 857	032.27	R187	21 112.66	2 859 028.81
L188	20 432.47	2 856	976.01	R188	21 098.28	2 858 999.33
L189	20 434.57	2 856	894.90	R189	21 077.21	2 858 936.81
L190	20 438.08	2 856	859.62	R190	21 067.14	2 858 874.20
L191	20 439.24	2 856	853.18	R191	21 066.08	2 858 845.43
L192	20 451.25	2 856	784.71	R192	21 070.97	2 858 780.97
L193	20 597.88	2 856	248.96	R193	21 092.22	2 858 612.87
L194	20 622.85	2 856	188.16	R194	21 092.47	2 858 554.48
L195	20 644.95	2 856	143.40	R195	21 086.20	2 858 487.40
L196	21 544.79	2 854	668.10	R196	21 077.40	2 858 440.10
L197	21 565.43	2 854	634.31	R197	21 062.27	2 858 385.18
L198	21 588.46	2 854	592.29	R198	21 044.84	2 858 337.11
L199	21 606.10	2 854	550.10	R199	20 994.34	2 858 239.86
L200	21 616.61	2 854	517.95	R200	20 960.55	2 858 191.83
L201	21 629.85	2 854	463.13	R201	20 906.25	2 858 130.09
L202	21 633.41	2 854	426.10	R202	20 805.06	2 858 038.95
L203	21 635.10	2 854	391.06	R203	20 767.05	2 858 002.86
L204	21 633.08	2 854	348.11	R204	20 728.59	2 857 957.18

Vel	14	Van	21	P802/11
Sheet		of		

PADRESERWE KOÖRDINATE / ROAD RESERVE CO-ORDINATES						
LINKERKANT/LEFT HAND SIDE				REGTERKANT/RIGHT HAND SIDE		
	Y	X	WG 31°		Y	X
L205	21 627.46	2 854	307.83	R205	20 698.00	2 857 910.96
L206	21 623.05	2 854	276.78	R206	20 661.20	2 857 834.11
L207	21 615.75	2 854	252.00	R207	20 444.88	2 857 236.80
L208	21 614.47	2 854	247.67	R208	20 428.20	2 857 186.78
L209	21 605.47	2 854	220.85	R209	20 420.35	2 857 158.51
L210	21 594.95	2 854	194.67	R210	20 405.49	2 857 088.72
L211	21 581.50	2 854	166.74	R211	20 398.38	2 857 036.03
L212	21 567.85	2 854	142.09	R212	20 394.67	2 856 977.02
L213	21 551.56	2 854	116.82	R213	20 395.19	2 856 918.84
L214	21 534.55	2 854	093.62	R214	20 400.57	2 856 854.82
L215	21 508.29	2 854	062.86	R215	20 403.26	2 856 839.57
L216	21 487.37	2 854	041.73	R216	20 409.11	2 856 801.29
L217	21 444.23	2 854	005.31	R217	20 414.40	2 856 776.34
L218	21 392.97	2 853	972.12	R218	20 521.93	2 856 374.34
L219	21 338.76	2 853	945.88	R219	20 539.01	2 856 310.59
L220	21 037.26	2 853	820.16	R220	20 549.48	2 856 275.47
L221	20 989.49	2 853	797.43	R221	20 574.30	2 856 206.53
L222	20 946.88	2 853	772.16	R222	20 588.74	2 856 172.84
L223	20 909.10	2 853	745.81	R223	20 622.02	2 856 107.40
L224	20 872.65	2 853	715.32	R224	20 639.39	2 856 077.02
L225	20 833.36	2 853	675.98	R225	21 514.71	2 854 644.82
L226	20 794.83	2 853	629.21	R226	21 532.90	2 854 615.01
L227	20 774.95	2 853	600.98	R227	21 554.46	2 854 575.59
L228	20 548.97	2 853	239.85	R228	21 570.61	2 854 537.11
L229	20 526.92	2 853	204.68	R229	21 580.30	2 854 507.44
L230	20 501.04	2 853	153.79	R230	21 592.62	2 854 450.38
L231	20 476.45	2 853	098.78	R231	21 597.27	2 854 390.58
L232	20 457.99	2 853	048.84	R232	21 593.95	2 854 331.83
L233	20 442.49	2 852	997.47	R233	21 586.63	2 854 292.09
L234	20 259.75	2 852	303.84	R234	21 584.79	2 854 282.11
L235	20 245.17	2 852	260.95	R235	21 570.00	2 854 232.77
L236	20 226.72	2 852	214.20	R236	21 554.25	2 854 196.98
L237	20 210.53	2 852	180.00	R237	21 535.37	2 854 161.48
L238	20 189.04	2 852	140.56	R238	21 520.44	2 854 138.21
L239	20 165.38	2 852	101.68	R239	21 493.92	2 854 101.96
L240	20 127.70	2 852	054.47	R240	21 461.31	2 854 069.09
L241	20 097.06	2 852	022.64	R241	21 421.59	2 854 035.53
L242	20 059.65	2 851	987.81	R242	21 374.41	2 854 005.00
L243	20 019.61	2 851	956.10	R243	21 323.69	2 853 980.50
L244	19 977.51	2 851	927.97	R244	21 022.19	2 853 854.81
L245	19 367.69	2 851	527.27	R245	20 971.68	2 853 830.80
L246	19 341.36	2 851	509.30	R246	20 926.45	2 853 803.99
L247	19 291.34	2 851	468.98	R247	20 886.27	2 853 775.87
L248	19 251.16	2 851	426.27	R248	20 846.97	2 853 743.05
L249	19 218.28	2 851	381.97	R249	20 805.46	2 853 701.37
L250	19 192.04	2 851	336.97	R250	20 780.99	2 853 673.04
L251	19 171.19	2 851	291.92	R251	20 743.38	2 853 621.81
L252	19 156.69	2 851	248.44	R252	20 516.78	2 853 258.84
L253	19 146.04	2 851	202.30	R253	20 491.47	2 853 215.88
L254	19 139.88	2 851	154.79	R254	20 467.03	2 853 170.10
L255	19 138.17	2 851	106.73	R255	20 441.37	2 853 112.90

Vel	15	Van	21	P802/11
Sheet		of		

PADRESERWE KOÖRDINATE / ROAD RESERVE CO-ORDINATES						
LINKERKANT/LEFT HAND SIDE				REGTERKANT/RIGHT HAND SIDE		
	Y	X	WG 31°		Y	X
L256	19 141.33	2 851	059.16	R256	20 422.22	2 853 060.86
L257	19 150.88	2 851	005.66	R257	20 405.97	2 853 007.54
L258	19 155.72	2 850	989.08	R258	20 221.60	2 852 311.84
L259	19 165.91	2 850	954.22	R259	20 209.41	2 852 273.33
L260	19 180.27	2 850	911.59	R260	20 189.88	2 852 224.87
L261	19 204.97	2 850	839.58	R261	20 163.84	2 852 171.73
L262	19 212.82	2 850	801.27	R262	20 131.18	2 852 121.52
L263	19 213.10	2 850	768.92	R263	20 102.18	2 852 084.05
L264	19 208.83	2 850	730.31	R264	20 070.12	2 852 048.84
L265	19 194.24	2 850	683.78	R265	20 035.12	2 852 016.44
L266	19 174.75	2 850	650.05	R266	19 998.46	2 851 987.48
L267	19 140.49	2 850	607.59	R267	19 956.80	2 851 959.46
L268	19 116.60	2 850	583.14	R268	19 346.78	2 851 558.70
L269	19 091.58	2 850	569.53	R269	19 321.13	2 851 541.43
L270	19 094.71	2 850	542.71	R270	19 265.62	2 851 496.66
L271	19 103.49	2 850	524.30	R271	19 249.45	2 851 478.60
L272	19 109.48	2 850	508.85	R272	19 206.08	2 851 430.20
L273	19 109.54	2 850	486.99	R273	19 184.84	2 851 398.94
L274	19 090.34	2 850	465.13	R274	19 161.24	2 851 358.99
L275	19 078.27	2 850	457.32	R275	19 137.01	2 851 307.22
L276	19 069.56	2 850	462.86	R276	19 124.69	2 851 272.19
L277	19 056.85	2 850	480.44	R277	19 108.49	2 851 207.61
L278	19 042.99	2 850	501.30	R278	19 102.23	2 851 157.87
L279	19 034.96	2 850	517.00	R279	19 100.35	2 851 106.18
L280	19 015.07	2 850	520.12	R280	19 103.80	2 851 054.59
L281	18 997.52	2 850	534.95	R281	19 112.75	2 851 004.73
L282	18 993.85	2 850	545.69	R282	19 114.18	2 850 996.76
L283	18 958.10	2 850	542.35	R283	19 129.94	2 850 942.58
L284	18 706.03	2 850	640.80	R284	19 168.43	2 850 829.77
L285	18 585.08	2 850	676.62	R285	19 173.31	2 850 807.57
L286	18 546.23	2 850	681.67	R286	19 174.14	2 850 751.44
L287	18 465.03	2 850	683.44	R287	19 159.48	2 850 698.51
L288	18 386.03	2 850	682.46	R288	19 137.34	2 850 660.85
L289	18 336.06	2 850	693.27	R289	19 107.14	2 850 628.11
L290	18 296.78	2 850	711.75	R290	19 074.86	2 850 605.26
L291	18 251.14	2 850	739.63	R291	19 039.41	2 850 591.46
L292	18 193.57	2 850	789.44	R292	19 002.61	2 850 587.62
L293	18 153.75	2 850	819.03	R293	18 927.97	2 850 589.00
L294	18 105.29	2 850	838.29	R294	18 736.25	2 850 665.52
L295	18 052.54	2 850	844.56	R295	18 572.90	2 850 712.66
L296	18 005.44	2 850	837.69	R296	18 468.33	2 850 726.53
L297	17 980.85	2 850	829.12	R297	18 422.12	2 850 723.21
L298	17 957.42	2 850	817.35	R298	18 367.46	2 850 731.34
L299	17 923.16	2 850	790.83	R299	18 346.79	2 850 745.39
L300	17 814.15	2 850	684.66	R300	18 290.63	2 850 770.35
L301	17 734.57	2 850	620.05	R301	18 178.86	2 850 859.45
L302	17 699.09	2 850	595.69	R302	18 149.50	2 850 871.94
L303	17 502.86	2 850	471.61	R303	18 106.16	2 850 882.11
L304	17 457.50	2 850	452.18	R304	18 065.55	2 850 884.69
L305	17 399.53	2 850	443.31	R305	18 009.03	2 850 878.23
L306	17 387.55	2 850	441.46	R306	17 950.94	2 850 854.62

Vel  
Sheet

16

Van  
of

21

P802/11

PADRESERWE KOÖRDINATE / ROAD RESERVE CO-ORDINATES						
LINKERKANT/LEFT HAND SIDE				REGTERKANT/RIGHT HAND SIDE		
	Y	X	WG 31°		Y	X
L307	17 332.15	2 850	451.44	R307	17 901.33	2 850 818.66
L308	17 287.32	2 850	469.08	R308	17 856.17	2 850 777.57
L309	17 233.32	2 850	503.38	R309	17 822.40	2 850 745.06
L310	17 183.74	2 850	547.23	R310	17 787.09	2 850 711.06
L311	17 167.13	2 850	561.92	R311	17 710.67	2 850 651.52
L312	17 127.67	2 850	587.03	R312	17 672.80	2 850 623.72
L313	17 075.86	2 850	595.53	R313	17 483.56	2 850 498.94
L314	16 993.67	2 850	564.21	R314	17 470.78	2 850 494.16
L315	16 949.28	2 850	532.56	R315	17 449.82	2 850 486.33
L316	16 828.19	2 850	397.28	R316	17 390.38	2 850 476.04
L317	16 788.12	2 850	365.92	R317	17 340.51	2 850 484.67
L318	16 758.54	2 850	347.71	R318	17 304.61	2 850 497.22
L319	16 728.34	2 850	336.94	R319	17 260.27	2 850 526.42
L320	16 683.79	2 850	326.69	R320	17 216.80	2 850 564.34
L321	16 615.28	2 850	331.28	R321	17 190.58	2 850 587.21
L322	16 575.75	2 850	339.65	R322	17 164.34	2 850 604.63
L323	16 351.73	2 850	427.51	R323	17 121.44	2 850 623.75
L324	16 316.58	2 850	425.46	R324	17 091.79	2 850 641.39
L325	16 280.18	2 850	409.35	R325	17 065.54	2 850 644.25
L326	16 239.60	2 850	385.74	R326	17 023.67	2 850 624.79
L327	16 231.22	2 850	371.21	R327	16 993.43	2 850 612.94
L328	16 207.33	2 850	329.79	R328	16 968.16	2 850 597.72
L329	16 205.85	2 850	281.19	R329	16 934.37	2 850 563.99
L330	16 213.73	2 850	158.93	R330	16 797.74	2 850 424.49
L331	16 206.67	2 850	114.95	R331	16 769.16	2 850 398.38
L332	16 192.12	2 850	068.66	R332	16 748.12	2 850 385.82
L333	16 171.43	2 850	024.18	R333	16 696.90	2 850 367.29
L334	16 137.47	2 849	975.27	R334	16 638.60	2 850 361.88
L335	16 098.46	2 849	936.92	R335	16 587.79	2 850 375.18
L336	16 055.32	2 849	908.34	R336	16 391.51	2 850 460.87
L337	16 009.77	2 849	887.09	R337	16 365.61	2 850 468.31
L338	16 004.59	2 849	863.72	R338	16 334.71	2 850 472.88
L339	15 980.30	2 849	853.41	R339	16 270.88	2 850 457.49
L340	15 961.63	2 849	876.05	R340	16 231.41	2 850 439.62
L341	15 907.49	2 849	869.93	R341	16 222.16	2 850 439.14
L342	15 846.58	2 849	875.75	R342	16 209.15	2 850 425.60
L343	15 654.86	2 849	928.72	R343	16 206.19	2 850 402.85
L344	15 578.75	2 849	959.20	R344	16 201.66	2 850 395.65
L345	15 440.61	2 850	042.01	R345	16 168.64	2 850 343.28
L346	15 380.06	2 850	057.58	R346	16 164.93	2 850 305.10
L347	15 332.84	2 850	047.07	R347	16 174.46	2 850 170.61
L348	15 291.36	2 850	020.39	R348	16 168.61	2 850 120.57
L349	15 266.88	2 849	990.72	R349	16 155.91	2 850 074.59
L350	15 245.48	2 849	919.76	R350	16 127.34	2 850 020.49
L351	15 209.07	2 849	850.92	R351	16 083.39	2 849 973.01
L352	15 180.24	2 849	811.87	R352	16 047.16	2 849 943.11
L353	15 158.36	2 849	792.04	R353	15 986.22	2 849 917.43
L354	15 122.80	2 849	770.26	R354	15 882.69	2 849.904.73
L355	15 063.80	2 849	735.90	R355	15 827.44	2 849 918.87
L356	15 060.32	2 849	723.43	R356	15 781.17	2 849 932.12
L357	15 049.83	2 849	720.28	R357	15 727.25	2 849 944.04

Vel	17	Van	21	P802/11
Sheet		of		

PADRESERWE KOÖRDINATE / ROAD RESERVE CO-ORDINATES						
LINKERKANT/LEFT HAND SIDE				REGTERKANT/RIGHT HAND SIDE		
	Y	X	WG 31°		Y	X
L358	15 029.53	2 849	721.58	R358	15 678.20	2 849 957.24
L359	15 002.63	2 849	704.09	R359	15 616.59	2 849 980.87
L360	14 963.85	2 849	674.48	R360	15 587.59	2 850 002.09
L361	14 934.51	2 849	634.43	R361	15 481.00	2 850 070.06
L362	14 868.51	2 849	508.07	R362	15 434.71	2 850 085.83
L363	14 845.67	2 849	483.20	R363	15 375.01	2 850 091.14
L364	14 796.34	2 849	450.88	R364	15 324.50	2 850 080.80
L365	14 754.89	2 849	431.30	R365	15 294.69	2 850 064.06
L366	14 697.77	2 849	416.23	R366	15 264.94	2 850 041.85
L367	14 677.75	2 849	396.19	R367	15 233.12	2 850 004.54
L368	14 649.46	2 849	385.45	R368	15 198.26	2 849 904.96
L369	14 631.70	2 849	427.61	R369	15 155.88	2 849 838.99
L370	14 533.28	2 849	457.25	R370	15 123.67	2 849 809.25
L371	14 489.32	2 849	462.60	R371	14 952.86	2 849 712.75
L372	14 436.94	2 849	452.24	R372	14 906.00	2 849 661.65
L373	14 358.97	2 849	416.44	R373	14 861.51	2 849 570.86
L374	14 325.48	2 849	406.84	R374	14 834.12	2 849 535.05
L375	14 271.24	2 849	404.80	R375	14 810.09	2 849 496.50
L376	14 215.42	2 849	418.66	R376	14 729.96	2 849 460.28
L377	14 165.60	2 849	461.99	R377	14 681.97	2 849 455.78
L378	14 147.53	2 849	489.67	R378	14 614.29	2 849 470.58
L379	14 132.31	2 849	506.76	R379	14 576.75	2 849 483.37
L380	14 104.50	2 849	548.02	R380	14 472.53	2 849 504.21
L381	14 092.81	2 849	584.97	R381	14 426.71	2 849 492.89
L382	14 110.42	2 849	624.45	R382	14 384.51	2 849 470.51
L383	14 138.95	2 849	637.50	R383	14 334.34	2 849 452.32
L384	14 179.62	2 849	684.38	R384	14 293.09	2 849 437.35
L385	14 240.60	2 849	742.12	R385	14 228.37	2 849 455.11
L386	14 265.41	2 849	785.07	R386	14 183.33	2 849 500.03
L387	14 278.86	2 849	830.31	R387	14 167.03	2 849 549.75
L388	14 276.92	2 849	885.28	R388	14 168.44	2 849 604.12
L389	14 252.62	2 849	941.28	R389	14 202.29	2 849 659.72
L390	14 225.82	2 849	972.18	R390	14 284.61	2 849 743.74
L391	14 170.15	2 850	018.48	R391	14 298.20	2 849 762.51
L392	14 130.74	2 850	058.76	R392	14 317.20	2 849 844.87
L393	14 117.97	2 850	086.43	R393	14 313.93	2 849 889.52
L394	14 109.26	2 850	111.45	R394	14 303.02	2 849 922.04
L395	14 104.39	2 850	125.42	R395	14 255.57	2 849 991.67
L396	14 104.78	2 850	175.75	R396	14 194.38	2 850 046.79
L397	14 112.04	2 850	214.17	R397	14 172.45	2 850 068.63
L398	14 148.13	2 850	284.45	R398	14 158.71	2 850 087.70
L399	14 248.27	2 850	374.68	R399	14 141.10	2 850 144.30
L400	14 308.33	2 850	453.45	R400	14 147.84	2 850 216.18
L401	14 343.07	2 850	568.12	R401	14 177.90	2 850 261.84
L402	14 347.94	2 850	659.67	R402	14 280.54	2 850 355.01
L403	14 338.46	2 850	703.65	R403	14 337.25	2 850 425.72
L404	14 307.05	2 850	783.47	R404	14 368.19	2 850 499.82
L405	14 274.71	2 850	832.80	R405	14 380.64	2 850 566.75
L406	14 234.23	2 850	873.92	R406	14 383.39	2 850 623.48
L407	14 146.65	2 850	934.51	R407	14 381.97	2 850 677.99
L408	13 830.91	2 851	117.02	R408	14 362.23	2 850 751.35

Vel	18	Van	21	P802/11
Sheet		of		

PADRESERWE KOÖRDINATE / ROAD RESERVE CO-ORDINATES						
LINKERKANT/LEFT HAND SIDE				REGTERKANT/RIGHT HAND SIDE		
	Y	X	WG 31°		Y	X
L409	13 788.96	2 851 150.35		R409	14 336.05	2 850 804.85
L410	13 742.17	2 851 194.55		R410	14 318.68	2 850 836.29
L411	13 667.85	2 851 287.75		R411	14 279.62	2 850 884.77
L412	13 619.36	2 851 322.21		R412	14 251.95	2 850 909.53
L413	13 555.86	2 851 340.06		R413	14 156.11	2 850 974.52
L414	13 486.23	2 851 336.33		R414	13 843.47	2 851 155.29
L415	13 340.29	2 851 259.21		R415	13 771.97	2 851 220.14
L416	13 271.68	2 851 240.41		R416	13 693.92	2 851 315.91
L417	13 183.03	2 851 249.40		R417	13 636.01	2 851 355.85
L418	13 121.71	2 851 281.49		R418	13 560.67	2 851 383.20
L419	13 054.29	2 851 333.06		R419	13 499.59	2 851 378.48
L420	12 968.49	2 851 383.21		R420	13 410.89	2 851 346.26
L421	12 906.11	2 851 416.01		R421	13 300.44	2 851 285.54
L422	12 904.70	2 851 414.23		R422	13 256.72	2 851 289.06
L423	12 399.62	2 851 575.13		R423	13 198.05	2 851 292.35
L424	12 319.52	2 851 591.99		R424	13 145.50	2 851 320.54
L425	12 208.87	2 851 599.26		R425	13 075.38	2 851 367.24
L426	12 122.49	2 851 592.17		R426	12 986.38	2 851 416.74
L427	11 695.67	2 851 510.56		R427	12 926.74	2 851 447.07
L428	11 651.87	2 851 495.71		R428	12 387.13	2 851 616.22
L429	11 569.63	2 851 446.47		R429	12 322.66	2 851 635.73
L430	11 494.48	2 851 368.29		R430	12 207.54	2 851 637.13
L431	11 460.98	2 851 271.99		R431	12 117.31	2 851 629.97
L432	11 443.36	2 851 210.10		R432	11 750.21	2 851 558.54
L433	11 432.22	2 851 170.99		R433	11 685.34	2 851 547.31
L434	11 388.70	2 851 084.18		R434	11 582.53	2 851 508.70
L435	11 322.87	2 850 963.10		R435	11 506.31	2 851 436.86
L436	11 238.99	2 850 855.21		R436	11 462.13	2 851 389.08
L437	11 140.05	2 850 763.91		R437	11 413.18	2 851 298.64
L438	11 088.18	2 850 725.37		R438	11 408.16	2 851 273.14
L439	11 015.83	2 850 679.04		R439	11 391.89	2 851 190.94
L440	10 938.60	2 850 641.04		R440	11 365.17	2 851 122.58
L441	10 823.70	2 850 596.96		R441	11 290.98	2 850 983.95
L442	10 771.47	2 850 583.75		R442	11 210.83	2 850 881.02
L443	10 653.54	2 850 567.41		R443	11 116.38	2 850 791.27
L444	10 609.49	2 850 562.07		R444	11 069.41	2 850 755.66
L445	10 299.34	2 850 583.35		R445	10 999.80	2 850 710.23
L446	10 075.81	2 850 596.62		R446	10 925.41	2 850 673.61
L447	10 022.31	2 850 598.89		R447	10 812.19	2 850 633.25
L448	9 905.38	2 850 603.85		R448	10 764.10	2 850 621.19
L449	9 580.17	2 850 615.58		R449	10 686.14	2 850 609.96
L450	8 910.72	2 850 612.65		R450	10 629.36	2 850 603.49
L451	8 547.83	2 850 608.78		R451	10 552.68	2 850 607.84
L452	8 364.24	2 850 616.06		R452	10 375.99	2 850 618.85
L453	8 249.17	2 850 631.41		R453	10 360.52	2 850 613.31
L454	8 166.90	2 850 650.34		R454	10 308.08	2 850 617.02
L455	8 039.96	2 850 678.92		R455	10 049.65	2 850 633.73
L456	7 957.50	2 850 696.26		R456	9 947.90	2 850 636.80
L457	7 813.68	2 850 716.62		R457	9 634.39	2 850 653.25
L458	7 660.35	2 850 716.78		R458	9 534.51	2 850 651.43
L459	7 300.36	2 850 696.70		R459	8 842.40	2 850 648.43

Vel	19	Van	21	P802/11
Sheet		of		

PADRESERWE KOÖRDINATE / ROAD RESERVE CO-ORDINATES						
LINKERKANT/LEFT HAND SIDE				REGTERKANT/RIGHT HAND SIDE		
	Y	X	WG 31°		Y	X
L460	7 010.02	2 850 679.34		R460	8 513.89	2 850 644.35
L461	6 682.32	2 850 659.04		R461	8 477.15	2 850 645.01
L462	6 595.67	2 850 660.39		R462	8 440.66	2 850 646.17
L463	6 519.41	2 850 665.45		R463	8 404.37	2 850 648.40
L464	6 182.59	2 850 699.39		R464	8 368.62	2 850 651.81
L465	6 150.61	2 850 702.23		R465	8 331.97	2 850 656.02
L466	6 074.97	2 850 703.95		R466	8 295.80	2 850 661.81
L467	6 004.34	2 850 699.88		R467	8 266.14	2 850 667.24
L468	5 961.61	2 850 693.59		R468	8 237.16	2 850 673.00
L469	5 896.01	2 850 681.84		R469	8 185.57	2 850 685.38
L470	5 862.30	2 850 675.17		R470	8 008.15	2 850 723.49
L471	5 807.23	2 850 656.30		R471	7 970.08	2 850 734.02
L472	5 707.91	2 850 615.99		R472	7 916.27	2 850 742.13
L473	5 446.66	2 850 483.42		R473	7 802.38	2 850 753.96
L474	4 704.46	2 850 100.72		R474	7 694.06	2 850 753.96
L475	4 174.85	2 849 828.71		R475	7 308.46	2 850 733.53
L476	3 738.52	2 849 603.15		R476	7 281.63	2 850 732.17
L477	3 498.21	2 849 479.56		R477	6 688.31	2 850 698.39
L478	3 255.29	2 849 355.10		R478	6 645.76	2 850 698.06
L479	3 219.79	2 849 339.27		R479	6 615.25	2 850 697.83
L480	3 166.71	2 849 315.35		R480	6 502.10	2 850 703.63
L481	2 941.26	2 849 224.15		R481	6 283.15	2 850 726.86
L482	2 890.63	2 849 203.56		R482	6 154.08	2 850 739.63
L483	2 851.77	2 849 185.21		R483	6 076.81	2 850 740.89
L484	2 806.86	2 849 162.59		R484	5 994.80	2 850 736.76
L485	2 763.76	2 849 137.42		R485	5 934.56	2 850 728.76
L486	2 708.99	2 849 103.08		R486	5 899.20	2 850 721.44
L487	2 644.38	2 849 056.64		R487	5 863.18	2 850 713.14
L488	2 623.12	2 849 039.99		R488	5 804.08	2 850 704.56
L489	2 507.43	2 848 932.89		R489	5 728.68	2 850 671.09
L490	2 468.11	2 848 890.32		R490	5 434.46	2 850 519.29
L491	2 416.18	2 848 828.50		R491	4 133.19	2 849 848.63
L492	2 389.47	2 848 792.60		R492	3 266.76	2 849 402.05
L493	2 345.94	2 848 724.87		R493	3 195.91	2 849 370.46
L494	2 253.57	2 848 553.60		R494	3 109.43	2 849 332.15
L495	2 184.68	2 848 418.30		R495	2 895.72	2 849 247.15
L496	2 180.80	2 848 411.85		R496	2 830.70	2 849 216.64
L497	2 151.67	2 848 358.41		R497	2 805.97	2 849 204.56
L498	2 131.67	2 848 330.33		R498	2 719.03	2 849 154.65
L499	2 110.04	2 848 301.85		R499	2 636.93	2 849 098.40
L500	2 083.49	2 848 270.87		R500	2 576.03	2 849 049.95
L501	2 065.35	2 848 249.70		R501	2 541.40	2 849 019.71
L502	1 988.76	2 848 177.41		R502	2 487.73	2 848 968.26
L503	1 971.83	2 848 161.42		R503	2 437.53	2 848 914.03
L504	1 920.56	2 848 126.53		R504	2 392.10	2 848 860.18
L505	1 860.15	2 848 090.80		R505	2 372.74	2 848 837.21
L506	1 778.80	2 848 051.15		R506	2 313.23	2 848 746.20
L507	1 714.56	2 848 020.29		R507	2 282.73	2 848 691.12
L508	1 659.71	2 847 995.63		R508	2 257.35	2 848 644.37
L509	1 581.46	2 847 962.14		R509	2 233.11	2 848 596.23
L510	1 419.16	2 847 886.73		R510	2 159.78	2 848 451.30

Vel	20	Van	21	P802/11
Sheet		of		



PADRESERWE KOÖRDINATE / ROAD RESERVE CO-ORDINATES					
LINKERKANT/LEFT HAND SIDE			REGTERKANT/RIGHT HAND SIDE		
	Y	X	WG 31°	Y	X
L511	983.22	2 847	687.67	R511	2 120.03 2 848 381.01
				R512	2 090.84 2 848 340.78
				R513	2 059.10 2 848 297.53
				R514	2 014.03 2 848 250.53
				R515	1 972.47 2 848 211.71
				R516	1 904.43 2 848 161.31
				R517	1 865.63 2 848 137.59
				R518	1 823.96 2 848 114.13
				R519	1 763.95 2 848 086.76
				R520	1 566.51 2 847 996.09
				R521	1 397.35 2 847 918.76
				R522	967.39 2 847 722.22

Vel	21	Van	21	P802/11
Sheet		of		





Printed by and obtainable from the Government Printer, Bosman Street, Private Bag X85, Pretoria, 0001

Publications: Tel: (012) 748 6052, 748 6053, 748 6058

Advertisements: Tel: (012) 748 6205, 748 6208, 748 6209, 748 6210, 748 6211

Subscriptions: Tel: (012) 748 6054, 748 6055, 748 6057

Gedruk deur en verkrygbaar by die Staatsdrukker, Bosmanstraat, Privaatsak X85, Pretoria, 0001

Publikasies: Tel: (012) 748 6052, 748 6053, 748 6058

Advertensies: Tel: (012) 748 6205, 748 6208, 748 6209, 748 6210, 748 6211

Subskripsies: Tel: (012) 748 6054, 748 6055, 748 6057