



Government Gazette Staatskoerant

REPUBLIC OF SOUTH AFRICA
REPUBLIEK VAN SUID-AFRIKA

Vol. 601

Pretoria, 1 July
Julie 2015

No. 38934

N.B. The Government Printing Works will not be held responsible for the quality of "Hard Copies" or "Electronic Files" submitted for publication purposes



AIDS HELPLINE: 0800-0123-22 Prevention is the cure

GOVERNMENT NOTICE

DEPARTMENT OF TRANSPORT

No. 553

1 July 2015

**THE SOUTH AFRICAN NATIONAL ROADS
AGENCY SOC LIMITED**

Registration No: 1998/009584/30

**DECLARATION OF EXISTING ROAD THROUGH THE TOWNSHIP OF MORGENZON AS PART OF
NATIONAL ROAD R35 SECTION 1**

By virtue of Section 40 (1)(a) of The South African National Road Agency Limited and National Roads Act, 1998 (Act No. 7 of 1998), I hereby declare the section of the road, commencing from points L173 and R205 on sheet 7 of Plan No. P771/09, from where it proceeds in a general northerly direction along streets known as Wilhelmus South Street, De Jager Street, Steyn Street and Louis Street at the time of declaration, up to points L174 and R206 on sheet 7 of Plan No. P771/09 where it terminates, as a National Road.

This declaration includes the roadway, surfaced and gravel shoulders and angled or parallel surfaced parking bays which form part of the roadway, but excludes kerbs, channels and sidewalks along the said route.

(National Road R35 Section 1: Amersfoort – N17)



MINISTER OF TRANSPORT

GOEWERMENTSKENNISGEWING

DEPARTEMENT VAN VERVOER

No. 553

1 Julie 2015

**DIE SUID-AFRIKAANSE NASIONALE
PADAGENTSKAP MSB BEPERK**

Registrasie No: 1998/009584/30

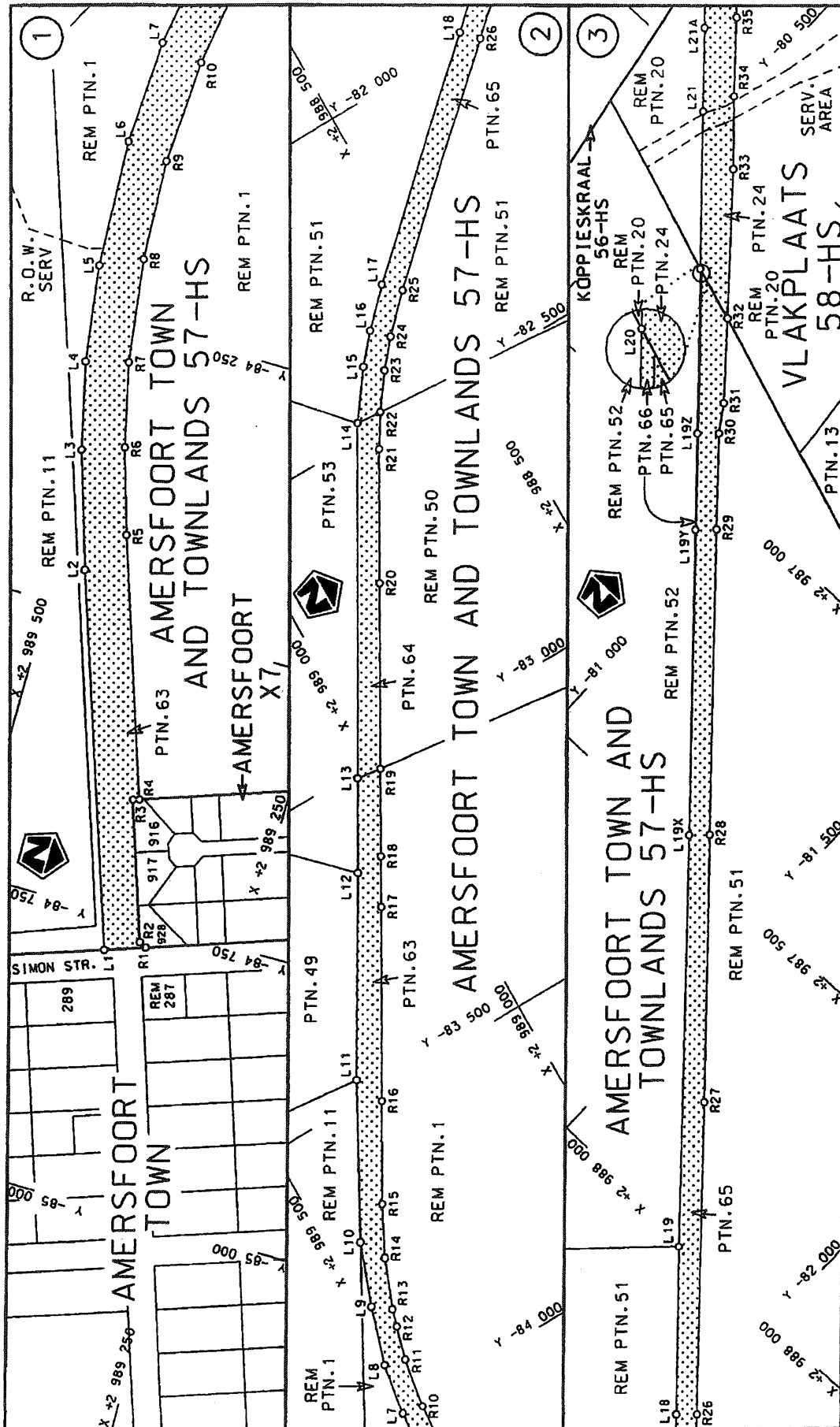
**VERKLARING VAN BESTAANDE PAD DEUR DIE DORPSGEBIED VAN MORGENZON AS DEEL VAN
NASIONALE PAD R35 SEKSIE 1**

Kragtens Artikel 40(1)(a) van die Wet op die Suid-Afrikaanse Nasionale Padagentskap Beperk en op Nasionale Paaie, Wet 1998 (Wet No. 7 van 1998), verklaar ek hiermee die gedeelte van die pad, beginnende vanaf punte L173 en R205 op vel 7 van Plan no. P771/09, van waar dit in 'n algemene noordelike rigting strek deur strate bekend as Wilhelmus Suid Straat, De Jager Straat, Steyn Straat en Louis Straat tydens die tyd van verklaring, tot by punte L174 en R206 van Plan no. P771/09 waar dit eindig, tot 'n Nasionale Pad.

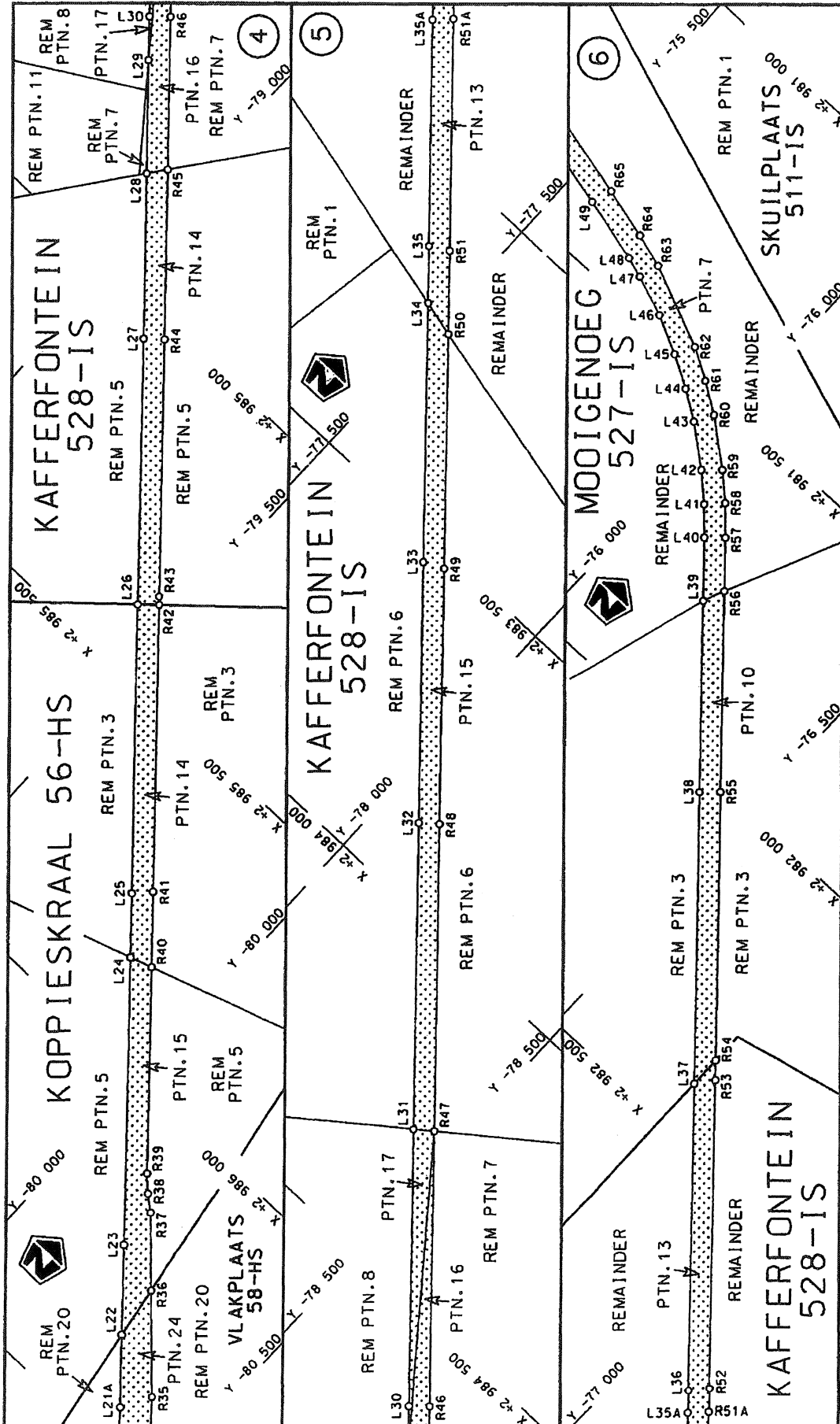
Hierdie verklaring sluit in die padbaan, geplavlei of gruis skouers en skuins of parallelle geplavleide parkeerplekke wat deel vorm van die padbaan, maar uitsluitende randstene, kanale en sypaadjies langs die genoemde roete.

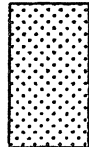
(Nasionale Pad R35 Seksie 1: Amersfoort – N17)

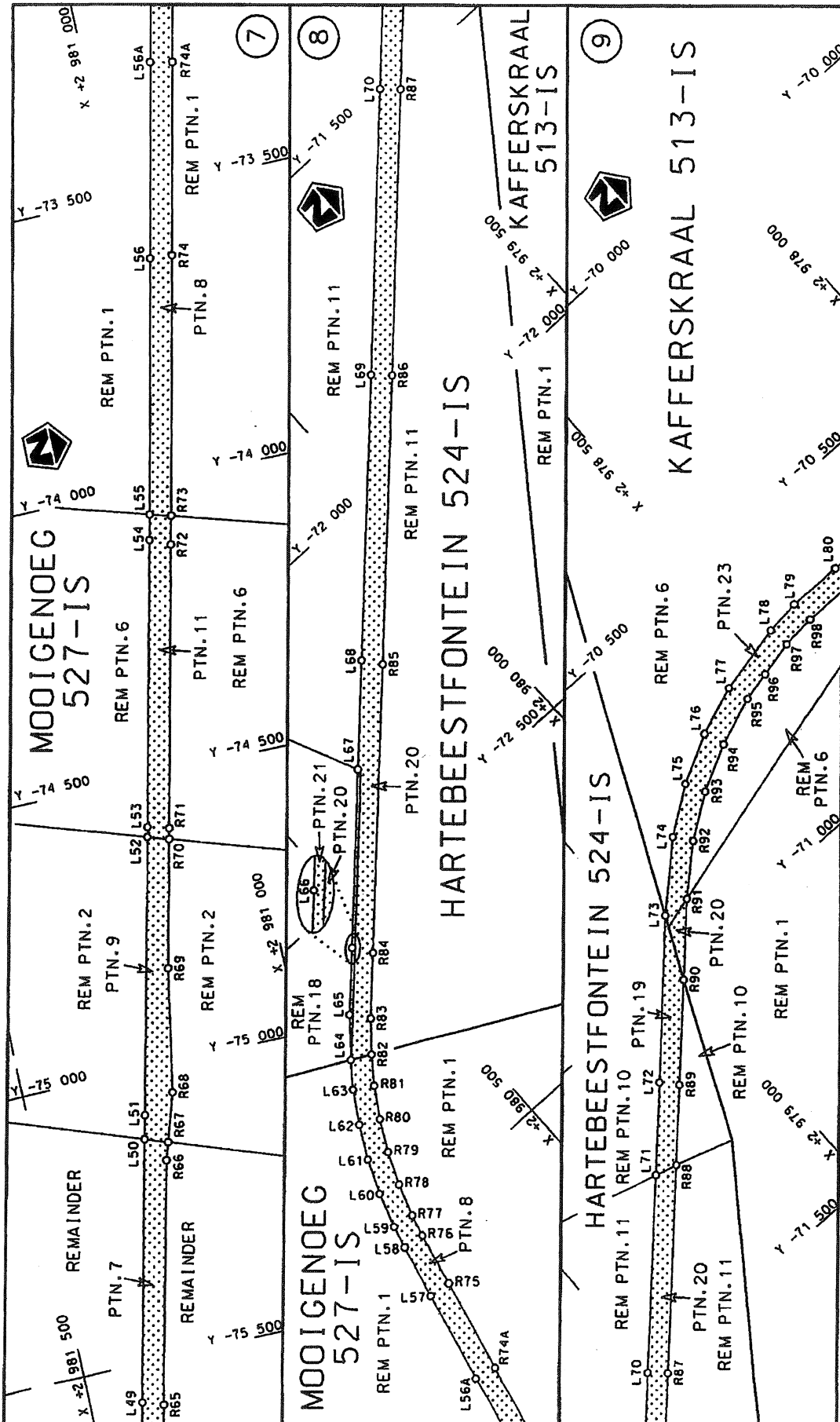
MINISTER VAN VERVOER



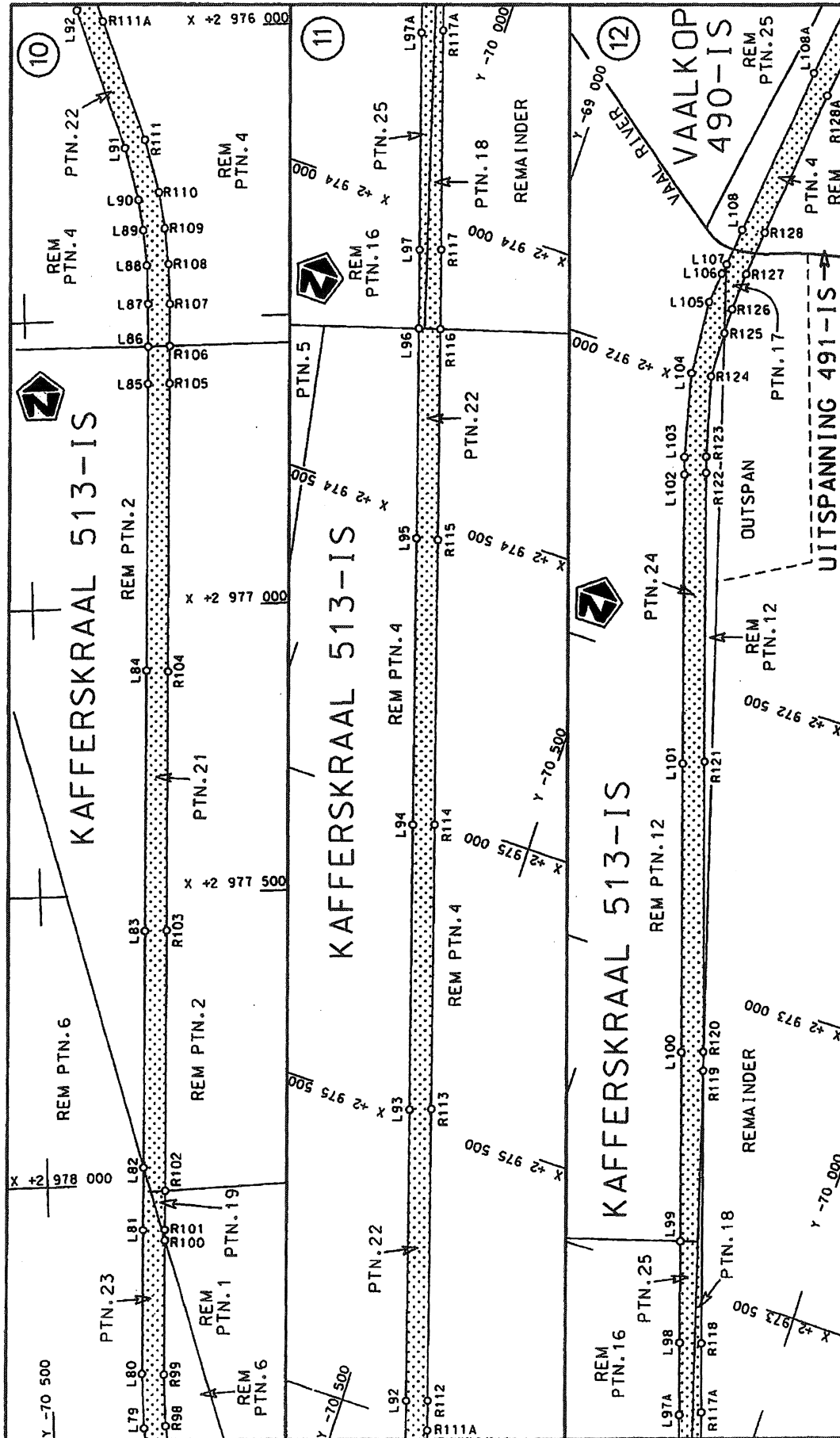
<p>Die Suid Afrikaanse Nasionale Padagentskap Beperk The South African National Roads Agency Limited</p>	<p>Die figuur getoon The figure shown</p>	<p>stedelike padreserwe voor van 'n gedeelte represents the road reserve of a portion van Nasionale Roete R35 of National Route</p>
<p>Vel Sheet 1 of 18 Plan P771/09</p>		<p>Seksie Section R35 1</p>



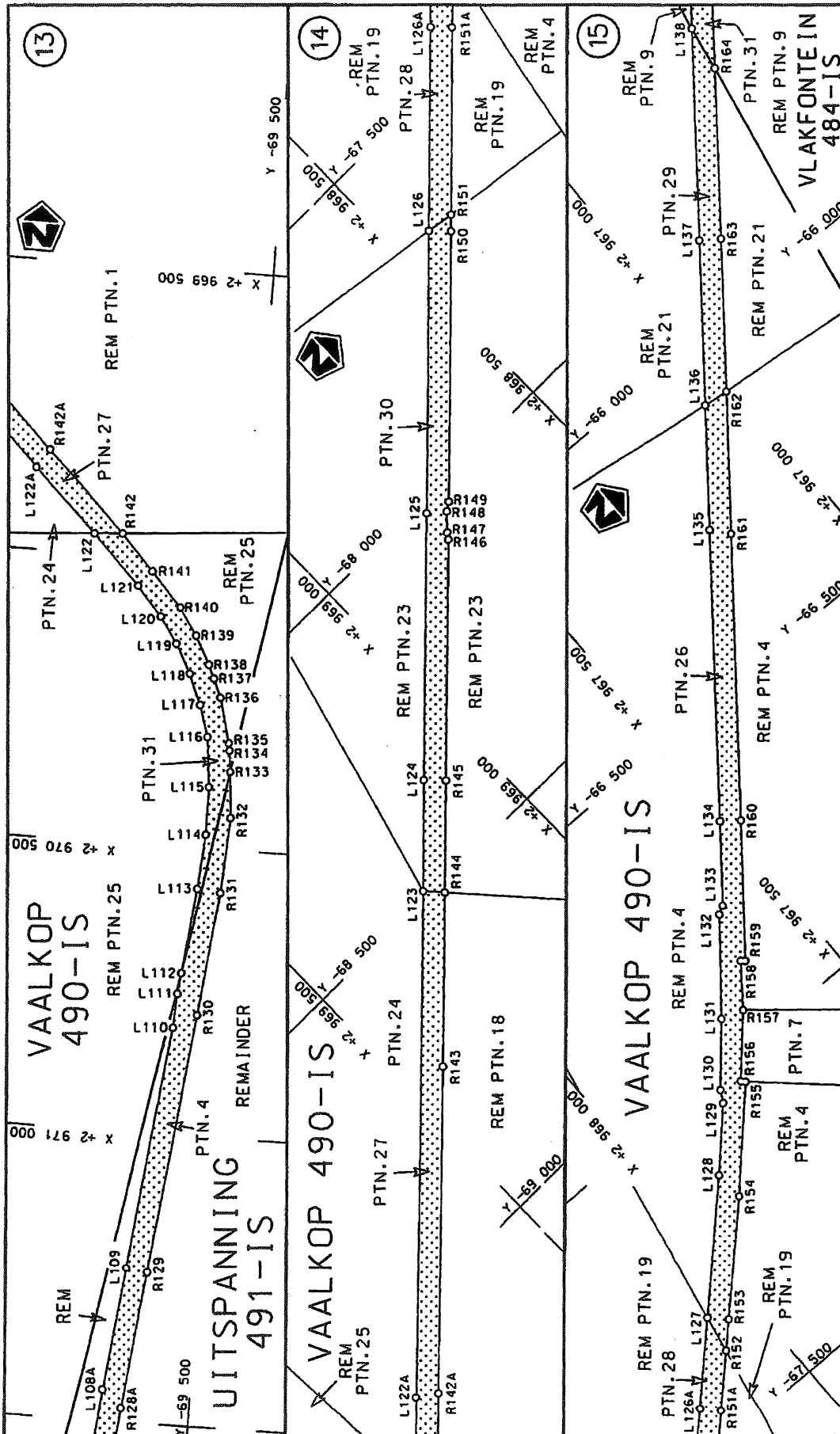
Die Suid-Afrikaanse Nasionale Padagentskap Beperk The South African National Roads Agency Limited	Die figuur getoon The figure shown		steldie padreserwe voor van 'n gedeelte represents the road reserve of a portion van Nasionale Roete R35 of National Route Section	Vel Sheet 2 of 18
				Plan P771/09

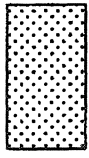


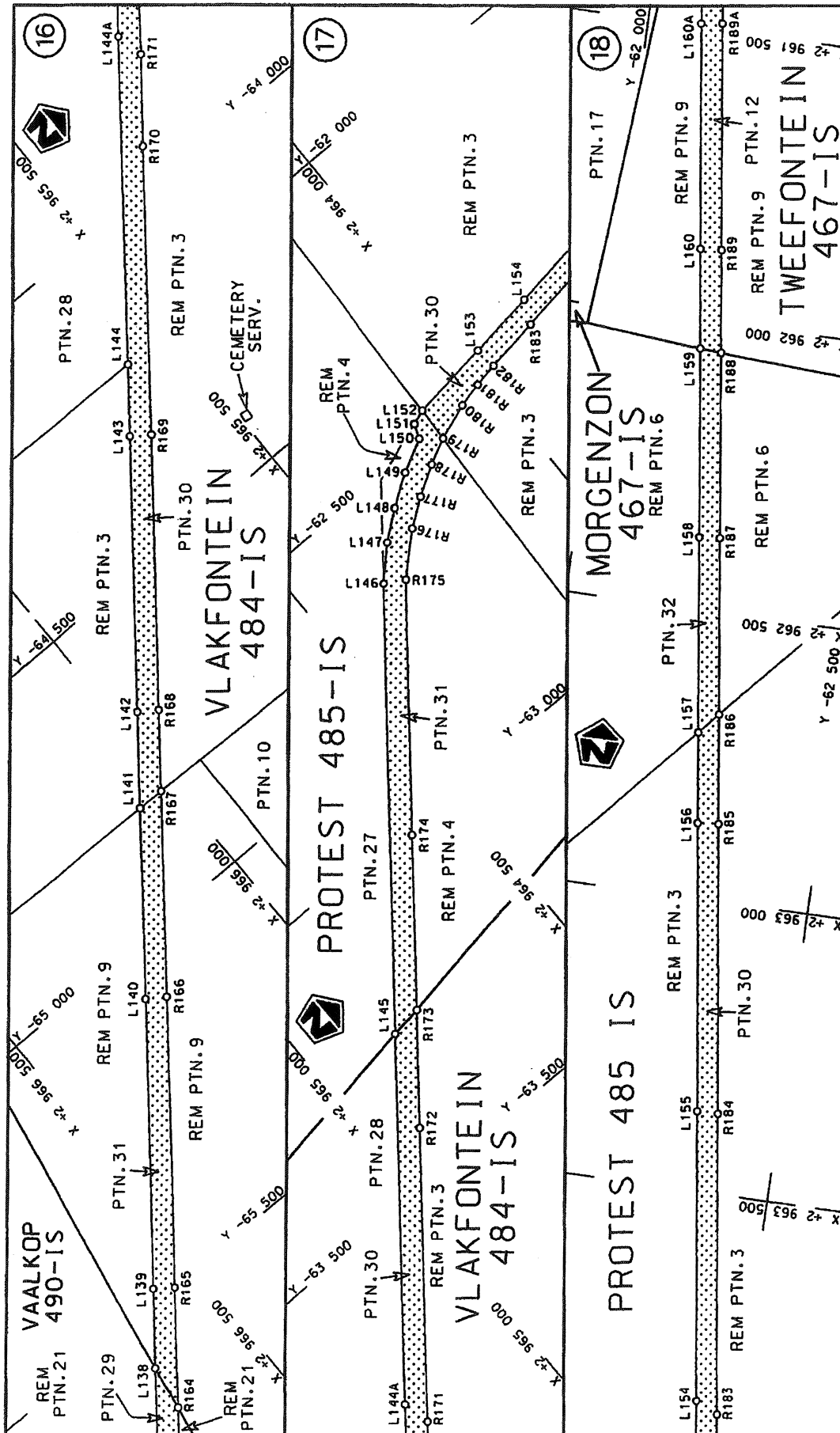
<p>Die Suid Afrikaanse Nasionale Padagentskap Beperk The South African National Roads Agency Limited</p>	<p>Die figuur getoon The figure shown</p>		<p>stelt die padreserve voor van 'n gedeelte represents the road reserve of a portion van Nasionale Roete R35 of National Route</p>	<p>Vel Sheet 3 of 18</p>
				<p>Plan P771/09</p>



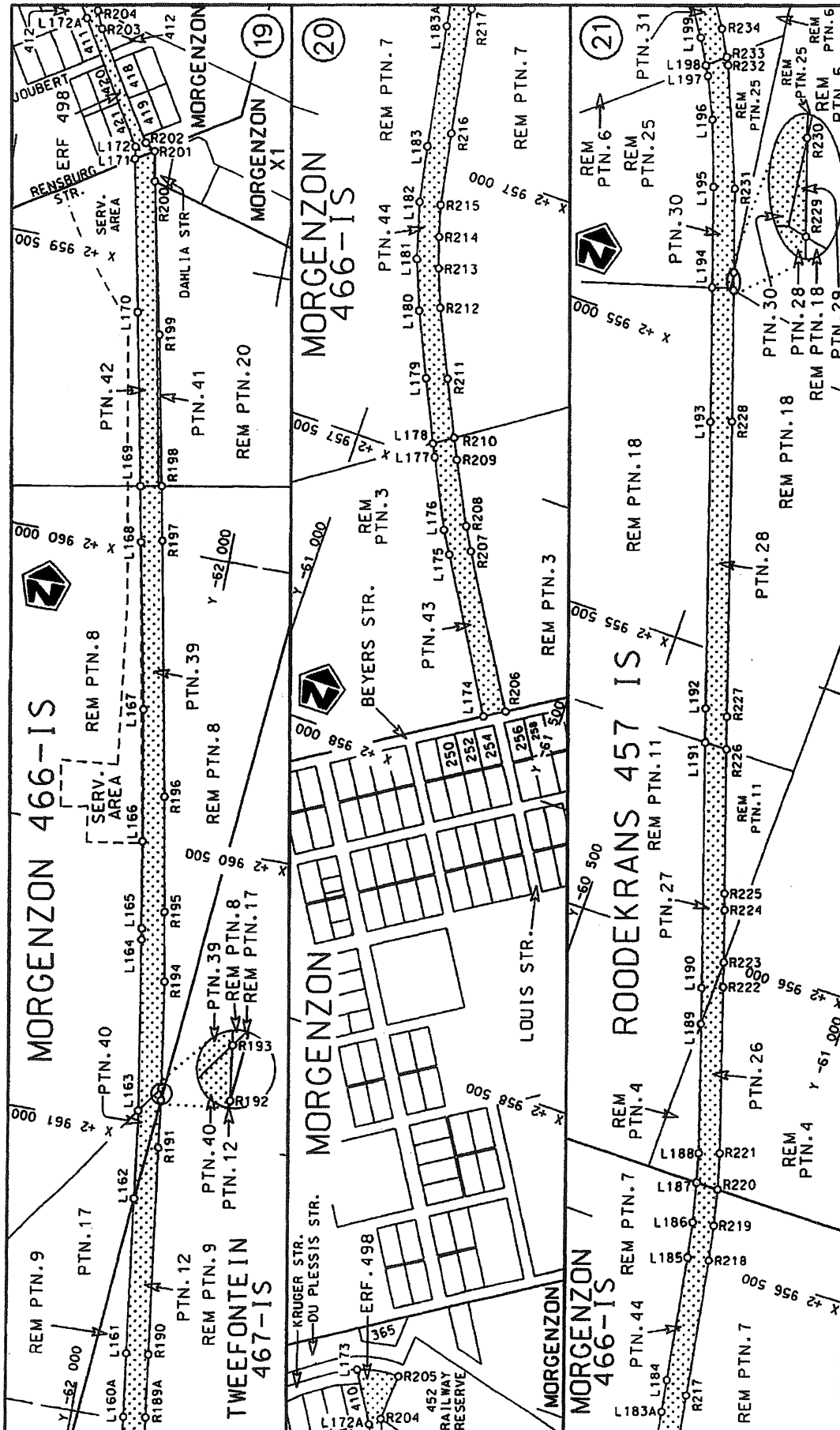
Die Suid-Afrikaanse Nasionale Padagentskap Beperk The South African National Roads Agency Limited	Die figuur getoon The figure shown		steldie padreserwe voor van 'n gedeelte represents the road reserve of a portion van Nasionale Roete R35 of National Route Section	Vel Sheet 4 of 18
				Plan P771/09



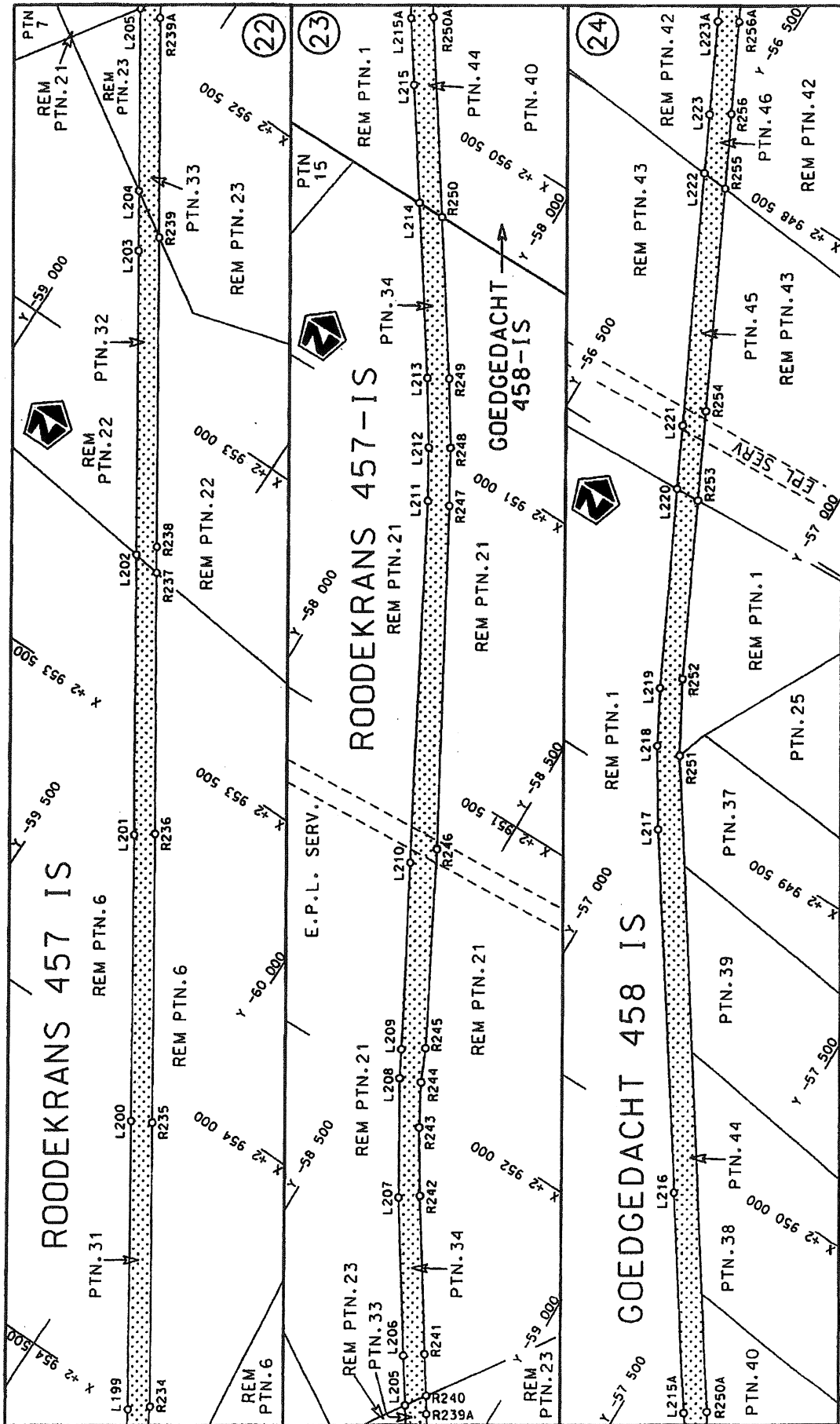
Die Suid Afrikaanse Nasionale Padagentskap Beperk The South African National Roads Agency Limited	Die figuur getoon The figure shown		steldie padreserwe voor van 'n gedeelte represents the road reserve of a portion van Nasionale Roete R35 of National Route	Vel Sheet 5 of 18
				Plan P771/09



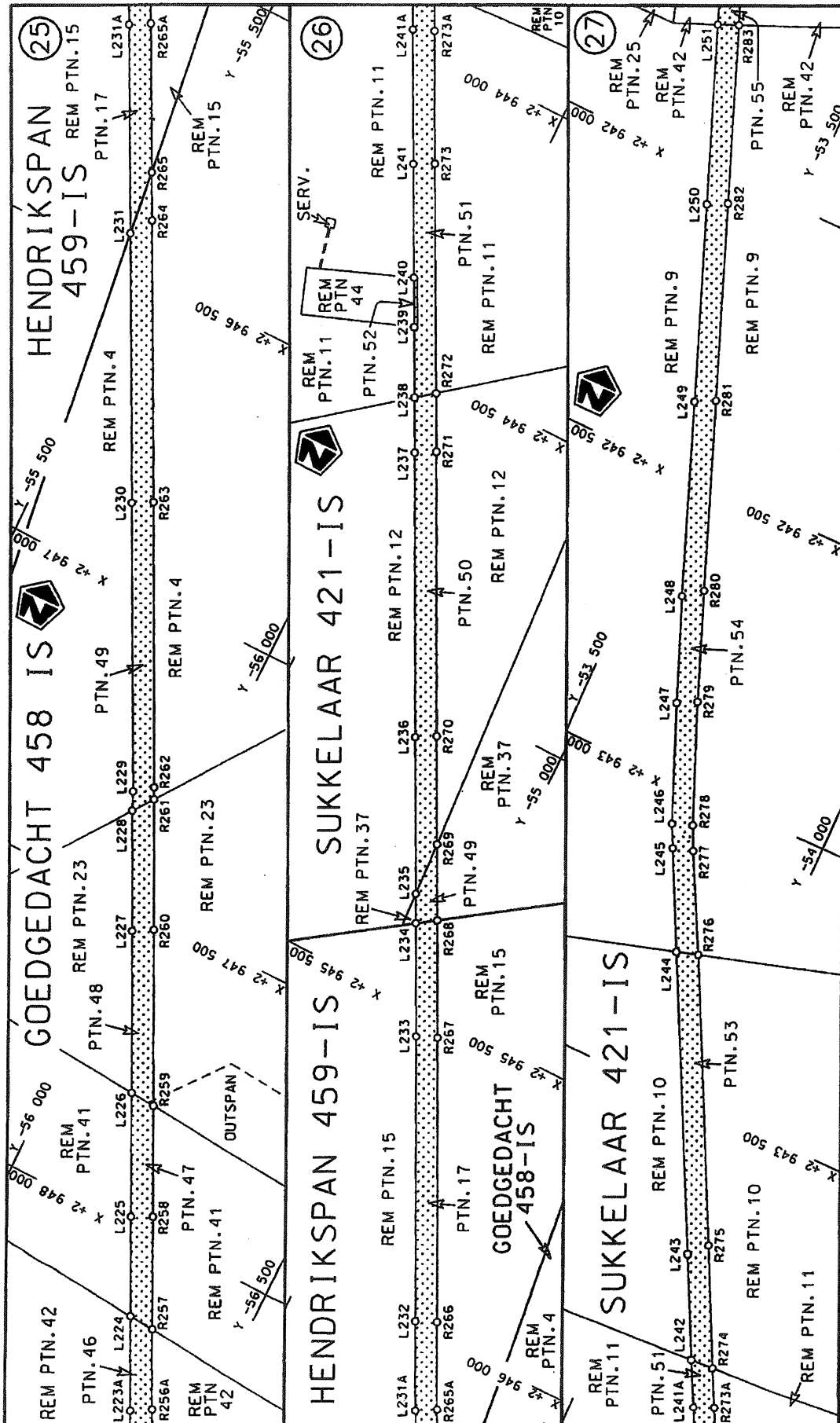
Die Suid Afrikaanse Nasionale Padagentskap Beperk The South African National Roads Agency Limited	Die figuur getoon The figure shown		steldie padreserwe voor in gedeelte represents the road reserve of a portion van Nasionale Roete R35 of National Route R35	1 Section
			Vel Sheet 6 of 18	Plan P771/09

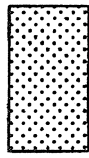


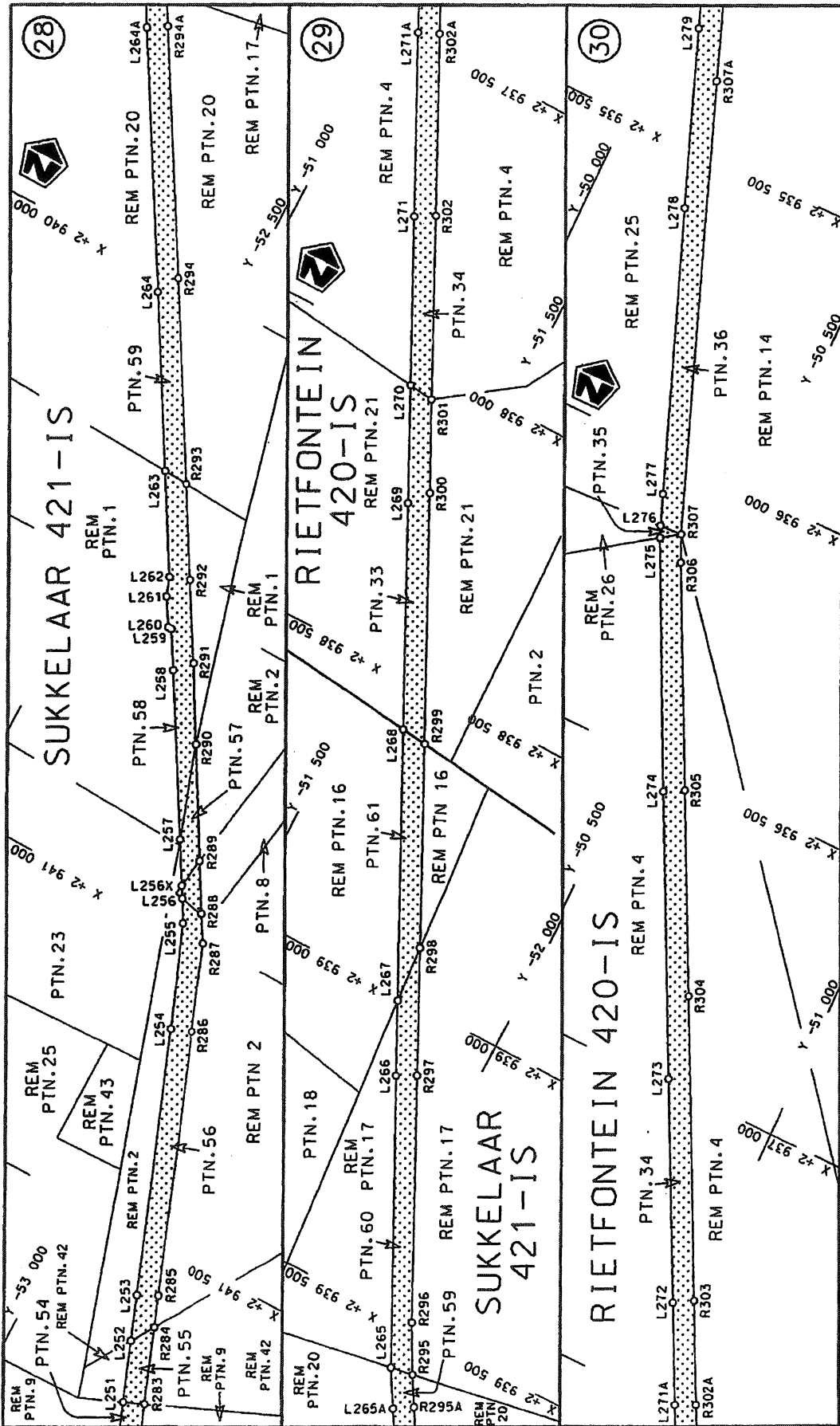
<p>Die Suid Afrikaanse Nasionale Padagentskap Beperk The South African National Roads Agency Limited</p>	<p>Die figuur getoon The figure shown</p>	<p>steldie podreserwe voor van 'n gedeelte represents the road reserve of a portion van Nasionale Roete R35 of National Route R35</p>	<p>Vel Sheet 7 of 18 Plan P771/09</p>
--	---	---	---



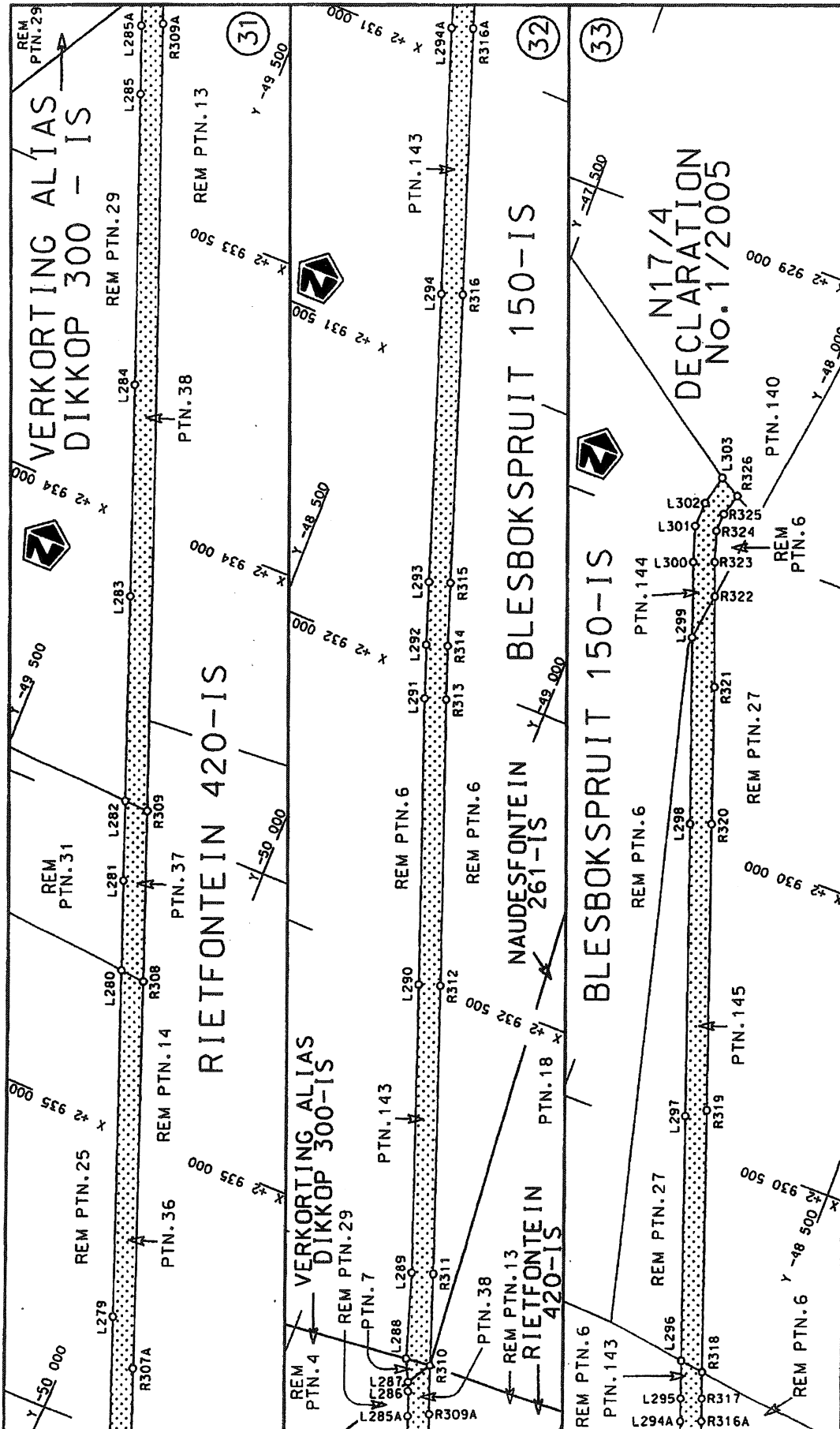
<p>Die Suid Afrikaanse Nasionale Padagentskap Beperk The South African National Roads Agency Limited</p>	<p>Die figuur getoon The figure shown</p>	<p>steldie padreserwe voor van 'n gedeelte represents the road reserve of a portion van Nasionale Roete R35 Sektie of National Route R35 Section</p>	<p>Vel Sheet 8 of 18</p>
<p>Die figuur getoon The figure shown</p>			<p>Plan P771/09</p>



Die Suid Afrikaanse Nasionale Padagentskap Beperk The South African National Roads Agency Limited	Die figuur getoon The figure shown		stel die padreserve voor van 'n gedeelte represents the road reserve of a portion van Nasionale Roete R35 of National Route Section	Vel Sheet 9 of 18
				Plan P771/09



<p>Die Suid Afrikaanse Nasionale Padagentskap Beperk The South African National Roads Agency Limited</p>	<p>Die figuur getoon The figure shown</p>	<p>stel die podreserwe voor van 'n gedeelte represents the road reserve of a portion van Nasionale Roete R35 of National Route R35</p> <p>Seksie 1 Section</p>
		<p>Vel Sheet 10 of 18 Plan P771/09</p>



<p>Die Suid Afrikaanse Nasionale Padagentskap Beperk The South African National Roads Agency Limited</p>	<p>Die figuur getoon The figure shown</p>	<p>steldie padreserwe voor van 'n gedeelte represents the road reserve of a portion van Nasionale Roete R35 of National Route R35</p>	<p>Vel Sheet 11 van 18 Plan P771/09</p>
--	---	---	---

PADRESERWE KOÖRDINATE / ROAD RESERVE CO-ORDINATES						
LINKERKANT/LEFT HAND SIDE				REGTERKANT/RIGHT HAND SIDE		
	Y	X	WG 29°		Y	X
L1	-84 782.610	2 989	370.690	R1	-84 770.860	2 989 335.590
L2	-84 466.230	2 989	476.800	R2	-84 767.700	2 989 341.940
L3	-84 366.280	2 989	507.710	R3	-84 649.180	2 989 381.670
L4	-84 291.650	2 989	525.070	R4	-84 647.330	2 989 376.150
L5	-84 208.190	2 989	536.090	R5	-84 427.240	2 989 449.960
L6	-84 098.630	2 989	539.590	R6	-84 354.370	2 989 471.980
L7	-84 008.330	2 989	533.060	R7	-84 282.240	2 989 488.340
L8	-83 917.570	2 989	517.330	R8	-84 192.610	2 989 499.690
L9	-83 818.820	2 989	487.080	R9	-84 105.770	2 989 502.390
L10	-83 712.680	2 989	447.470	R10	-84 015.790	2 989 495.940
L11	-83 466.170	2 989	311.440	R11	-83 927.890	2 989 480.880
L12	-83 155.030	2 989	127.330	R12	-83 870.910	2 989 465.060
L13	-83 011.740	2 989	043.520	R13	-83 841.550	2 989 457.080
L14	-82 475.090	2 988	729.630	R14	-83 757.670	2 989 424.270
L15	-82 396.140	2 988	671.700	R15	-83 674.840	2 989 381.610
L16	-82 347.810	2 988	629.640	R16	-83 519.810	2 989 292.040
L17	-82 289.910	2 988	571.240	R17	-83 226.900	2 989 122.370
L18	-81 984.920	2 988	231.620	R18	-83 150.380	2 989 078.100
L19	-81 786.740	2 988	014.540	R19	-83 017.040	2 989 000.880
L19X	-81 308.810	2 987	479.980	R20	-82 735.230	2 988 837.670
L19Y	-80 950.560	2 987	081.400	R21	-82 533.530	2 988 720.430
L19Z	-80 838.610	2 986	956.730	R22	-82 478.770	2 988 685.750
L20	-80 647.460	2 986	744.110	R23	-82 420.440	2 988 642.720
L21	-80 466.460	2 986	542.780	R24	-82 375.250	2 988 603.720
L22	-80 284.560	2 986	340.800	R25	-82 316.780	2 988 544.520
L23	-80 180.550	2 986	225.310	R26	-82 012.250	2 988 206.470
L24	-79 847.810	2 985	854.770	R27	-81 648.420	2 987 800.700
L25	-79 773.350	2 985	771.850	R28	-81 335.720	2 987 454.160
L26	-79 434.130	2 985	395.160	R29	-80 977.850	2 987 055.200
L27	-79 123.490	2 985	048.690	R30	-80 866.680	2 986 930.780
L28	-78 931.880	2 984	835.900	R31	-80 836.510	2 986 886.390
L29	-78 799.880	2 984	689.320	R32	-80 740.490	2 986 774.980
L30	-78 749.670	2 984	633.560	R33	-80 572.140	2 986 579.670
L31	-78 428.120	2 984	276.750	R34	-80 487.500	2 986 487.330
L32	-78 072.280	2 983	880.580	R35	-80 397.670	2 986 384.540
L33	-77 765.560	2 983	539.680	R36	-80 269.830	2 986 250.550
L34	-77 462.840	2 983	202.670	R37	-80 177.240	2 986 153.520
L35	-77 396.430	2 983	128.730	R38	-80 150.700	2 986 132.860
L36	-77 107.520	2 982	807.660	R39	-80 126.100	2 986 108.380
L37	-76 751.410	2 982	411.690	R40	-79 886.600	2 985 841.930
L38	-76 411.580	2 982	033.900	R41	-79 798.840	2 985 744.290
L39	-76 186.220	2 981	783.530	R42	-79 462.190	2 985 370.280
L40	-76 112.280	2 981	701.380	R43	-79 452.430	2 985 359.440
L41	-76 072.160	2 981	659.160	R44	-79 151.740	2 985 024.930
L42	-76 027.560	2 981	618.680	R45	-78 954.610	2 984 805.720
L43	-75 959.320	2 981	565.800	R46	-78 777.680	2 984 608.970
L44	-75 909.810	2 981	533.630	R47	-78 458.340	2 984 253.700
L45	-75 854.220	2 981	502.870	R48	-78 100.650	2 983 856.550
L46	-75 787.940	2 981	471.380	R49	-77 800.600	2 983 522.390
L47	-75 716.970	2 981	446.420	R50	-77 526.150	2 983 217.200
L48	-75 680.840	2 981	435.500	R51	-77 429.270	2 983 109.470

Vel	12	Van	18	P771/09
Sheet		of		

PADRESERWE KOÖRDINATE / ROAD RESERVE CO-ORDINATES						
LINKERKANT/LEFT HAND SIDE				REGTERKANT/RIGHT HAND SIDE		
	Y	X	WG 29°		Y	X
L49	-75 566.690	2 981 408.700		R52	-77 132.550	2 982 779.530
L50	-75 119.150	2 981 306.340		R53	-76 774.930	2 982 381.720
L51	-75 078.460	2 981 297.040		R54	-76 751.840	2 982 356.040
L52	-74 602.990	2 981 187.290		R55	-76 439.240	2 982 008.390
L53	-74 586.000	2 981 183.370		R56	-76 202.940	2 981 745.550
L54	-74 093.970	2 981 069.660		R57	-76 140.470	2 981 676.060
L55	-74 050.360	2 981 059.720		R58	-76 098.560	2 981 632.160
L56	-73 615.310	2 980 960.620		R59	-76 055.490	2 981 593.330
L57	-73 124.010	2 980 847.550		R60	-75 978.520	2 981 533.120
L58	-73 029.020	2 980 825.770		R61	-75 926.060	2 981 499.440
L59	-72 989.640	2 980 815.350		R62	-75 871.620	2 981 469.100
L60	-72 929.150	2 980 796.060		R63	-75 727.940	2 981 410.220
L61	-72 870.720	2 980 771.910		R64	-75 668.110	2 981 393.510
L62	-72 814.930	2 980 742.880		R65	-75 578.770	2 981 372.830
L63	-72 762.390	2 980 710.480		R66	-75 163.370	2 981 277.070
L64	-72 720.700	2 980 678.480		R67	-75 132.980	2 981 267.610
L65	-72 659.820	2 980 627.230		R68	-75 050.200	2 981 241.840
L66	-72 575.690	2 980 546.110		R69	-74 835.900	2 981 202.380
L67	-72 349.080	2 980 328.820		R70	-74 614.880	2 981 151.240
L68	-72 210.150	2 980 195.600		R71	-74 596.240	2 981 146.930
L69	-71 849.050	2 979 848.940		R72	-74 110.100	2 981 035.470
L70	-71 491.860	2 979 504.690		R73	-74 061.150	2 981 024.170
L71	-71 243.300	2 979 265.720		R74	-73 618.170	2 980 922.600
L72	-71 127.030	2 979 153.940		R75	-73 128.260	2 980 809.990
L73	-70 915.330	2 978 952.460		R76	-73 034.500	2 980 788.240
L74	-70 821.020	2 978 850.070		R77	-72 996.160	2 980 778.500
L75	-70 766.600	2 978 770.400		R78	-72 939.850	2 980 759.780
L76	-70 723.330	2 978 686.420		R79	-72 885.000	2 980 736.730
L77	-70 691.700	2 978 601.260		R80	-72 832.260	2 980 709.390
L78	-70 664.770	2 978 478.860		R81	-72 781.770	2 980 677.820
L79	-70 658.570	2 978 417.890		R82	-72 738.000	2 980 645.020
L80	-70 658.290	2 978 323.530		R83	-72 689.570	2 980 603.610
L81	-70 666.040	2 978 078.520		R84	-72 606.880	2 980 524.480
L82	-70 669.490	2 977 971.160		R85	-72 240.290	2 980 172.200
L83	-70 682.550	2 977 564.350		R86	-71 874.950	2 979 821.960
L84	-70 697.360	2 977 110.250		R87	-71 516.830	2 979 478.070
L85	-70 713.300	2 976 612.300		R88	-71 254.970	2 979 226.450
L86	-70 715.270	2 976 547.560		R89	-71 154.210	2 979 129.630
L87	-70 717.500	2 976 474.330		R90	-71 021.260	2 979 001.730
L88	-70 717.340	2 976 407.440		R91	-70 919.150	2 978 903.260
L89	-70 712.670	2 976 346.640		R92	-70 850.600	2 978 826.900
L90	-70 705.710	2 976 294.240		R93	-70 800.330	2 978 753.350
L91	-70 685.060	2 976 204.620		R94	-70 759.490	2 978 674.340
L92	-70 607.450	2 975 965.880		R95	-70 727.870	2 978 589.560
L93	-70 449.850	2 975 491.760		R96	-70 715.570	2 978 537.580
L94	-70 295.150	2 975 024.310		R97	-70 702.050	2 978 473.770
L95	-70 138.480	2 974 550.080		R98	-70 696.400	2 978 415.620
L96	-70 023.630	2 974 204.700		R99	-70 696.130	2 978 326.180
L97	-69 980.660	2 974 075.470		R100	-70 703.200	2 978 097.020
L98	-69 823.550	2 973 601.260		R101	-70 703.750	2 978 079.270
L99	-69 768.860	2 973 436.410		R102	-70 705.940	2 978 011.910

Vel	13	Van	18	P771/09
Sheet		of		

PADRESERWE KOÖRDINATE / ROAD RESERVE CO-ORDINATES						
LINKERKANT/LEFT HAND SIDE				REGTERKANT/RIGHT HAND SIDE		
	Y	X	WG 29°		Y	X
L100	-69 666.620	2 973	128.200	R103	-70 720.430	2 977 564.700
L101	-69 509.280	2 972	653.720	R104	-70 734.840	2 977 113.100
L102	-69 350.840	2 972	175.680	R105	-70 750.950	2 976 613.070
L103	-69 341.140	2 972	146.730	R106	-70 753.040	2 976 547.690
L104	-69 305.950	2 972	005.170	R107	-70 755.350	2 976 475.490
L105	-69 296.020	2 971	878.970	R108	-70 755.000	2 976 406.200
L106	-69 303.980	2 971	817.170	R109	-70 750.170	2 976 344.480
L107	-69 305.120	2 971	807.370	R110	-70 741.700	2 976 282.650
L108	-69 312.730	2 971	741.970	R111	-70 720.660	2 976 191.710
L109	-69 372.110	2 971	233.730	R112	-70 642.560	2 975 953.760
L110	-69 420.590	2 970	814.040	R113	-70 484.880	2 975 478.850
L111	-69 423.940	2 970	754.550	R114	-70 330.680	2 975 012.290
L112	-69 428.120	2 970	718.760	R115	-70 174.430	2 974 540.790
L113	-69 445.510	2 970	569.930	R116	-70 059.340	2 974 193.720
L114	-69 453.710	2 970	475.710	R117	-70 016.100	2 974 063.350
L115	-69 453.330	2 970	392.850	R118	-69 859.200	2 973 590.390
L116	-69 444.260	2 970	305.930	R119	-69 712.340	2 973 146.740
L117	-69 426.910	2 970	251.010	R120	-69 702.070	2 973 115.730
L118	-69 404.290	2 970	197.750	R121	-69 544.020	2 972 638.890
L119	-69 376.870	2 970	147.060	R122	-69 385.660	2 972 160.930
L120	-69 346.620	2 970	101.830	R123	-69 376.910	2 972 134.240
L121	-69 303.100	2 970	050.620	R124	-69 340.610	2 971 999.550
L122	-69 219.100	2 969	965.530	R125	-69 339.730	2 971 921.210
L123	-68 487.800	2 969	241.270	R126	-69 339.250	2 971 877.630
L124	-68 349.990	2 969	106.220	R127	-69 343.200	2 971 812.230
L125	-68 019.770	2 968	779.200	R128	-69 351.980	2 971 733.620
L126	-67 673.580	2 968	436.670	R129	-69 409.450	2 971 238.480
L127	-67 311.470	2 968	078.300	R130	-69 461.630	2 970 789.590
L128	-67 135.440	2 967	905.440	R131	-69 486.880	2 970 574.560
L129	-67 044.880	2 967	820.290	R132	-69 495.400	2 970 444.080
L130	-67 024.380	2 967	809.570	R133	-69 488.820	2 970 363.800
L131	-66 930.250	2 967	728.840	R134	-69 484.700	2 970 326.870
L132	-66 788.860	2 967	614.560	R135	-69 483.620	2 970 317.770
L133	-66 780.810	2 967	600.360	R136	-69 461.800	2 970 236.120
L134	-66 665.470	2 967	509.850	R137	-69 447.730	2 970 203.020
L135	-66 265.270	2 967	196.770	R138	-69 437.450	2 970 179.700
L136	-66 095.550	2 967	063.720	R139	-69 410.740	2 970 130.510
L137	-65 872.080	2 966	888.530	R140	-69 379.170	2 970 083.720
L138	-65 585.230	2 966	663.920	R141	-69 326.620	2 970 024.160
L139	-65 477.470	2 966	579.540	R142	-69 268.990	2 969 962.140
L140	-65 083.840	2 966	271.760	R143	-68 731.070	2 969 430.240
L141	-64 822.960	2 966	067.610	R144	-68 514.980	2 969 216.580
L142	-64 690.500	2 965	963.960	R145	-68 376.870	2 969 080.030
L143	-64 311.820	2 965	667.660	R146	-68 076.950	2 968 783.060
L144	-64 213.620	2 965	590.650	R147	-68 067.900	2 968 777.550
L145	-63 264.860	2 964	848.240	R148	-68 041.060	2 968 752.480
L146	-62 647.470	2 964	363.930	R149	-68 031.560	2 968 738.570
L147	-62 596.470	2 964	313.100	R150	-67 700.330	2 968 410.300
L148	-62 557.700	2 964	264.730	R151	-67 680.100	2 968 390.290
L149	-62 522.110	2 964	211.540	R152	-67 376.310	2 968 089.860
L150	-62 492.190	2 964	156.050	R153	-67 337.530	2 968 051.510

Vel	14	Van	18	P771/09
Sheet		of		

PADRESERWE KOÖRDINATE / ROAD RESERVE CO-ORDINATES						
LINKERKANT/LEFT HAND SIDE				REGTERKANT/RIGHT HAND SIDE		
	Y	X	WG 29°		Y	X
L151	-62 467.150	2 964 146.150		R154	-67 186.230	2 967 901.070
L152	-62 458.010	2 964 120.630		R155	-67 042.580	2 967 765.770
L153	-62 440.540	2 963 978.620		R156	-67 036.580	2 967 771.880
L154	-62 424.300	2 963 860.570		R157	-66 943.750	2 967 689.150
L155	-62 354.730	2 963 364.960		R158	-66 875.390	2 967 637.420
L156	-62 285.210	2 962 869.580		R159	-66 880.950	2 967 630.840
L157	-62 263.580	2 962 713.210		R160	-66 688.790	2 967 480.390
L158	-62 216.780	2 962 374.970		R161	-66 294.880	2 967 172.240
L159	-62 171.270	2 962 050.170		R162	-66 101.100	2 967 020.510
L160	-62 147.340	2 961 879.440		R163	-65 893.790	2 966 858.170
L161	-62 078.050	2 961 384.780		R164	-65 662.860	2 966 677.430
L162	-62 041.230	2 961 120.000		R165	-65 499.390	2 966 549.480
L163	-62 020.310	2 960 969.520		R166	-65 104.930	2 966 240.660
L164	-61 969.590	2 960 672.050		R167	-64 823.820	2 966 020.690
L165	-61 967.480	2 960 661.620		R168	-64 711.940	2 965 933.140
L166	-61 940.650	2 960 507.050		R169	-64 333.930	2 965 637.230
L167	-61 900.400	2 960 279.930		R170	-63 940.710	2 965 329.730
L168	-61 842.790	2 959 993.300		R171	-63 816.310	2 965 231.300
L169	-61 823.770	2 959 898.030		R172	-63 416.460	2 964 919.270
L170	-61 764.910	2 959 603.160		R173	-63 255.970	2 964 793.350
L171	-61 712.700	2 959 343.440		R174	-63 016.960	2 964 605.850
L172	-61 710.140	2 959 322.740		R175	-62 667.060	2 964 329.660
L173	-61 533.170	2 959 037.230		R176	-62 604.690	2 964 264.080
L174	-61 370.680	2 957 892.220		R177	-62 570.880	2 964 217.880
L175	-61 221.330	2 957 644.490		R178	-62 540.920	2 964 167.520
L176	-61 198.880	2 957 607.090		R179	-62 518.690	2 964 122.910
L177	-61 141.680	2 957 493.100		R180	-62 496.910	2 964 059.980
L178	-61 130.600	2 957 471.740		R181	-62 486.210	2 964 016.860
L179	-61 082.060	2 957 367.960		R182	-62 478.250	2 963 974.390
L180	-61 032.930	2 957 262.420		R183	-62 464.380	2 963 879.050
L181	-61 000.140	2 957 179.060		R184	-62 392.180	2 963 364.040
L182	-60 972.880	2 957 084.250		R185	-62 322.410	2 962 866.280
L183	-60 954.670	2 956 989.230		R186	-62 296.140	2 962 676.750
L184	-60 909.960	2 956 725.510		R187	-62 253.780	2 962 371.130
L185	-60 873.760	2 956 512.670		R188	-62 209.500	2 962 052.610
L186	-60 861.860	2 956 453.100		R189	-62 184.960	2 961 876.080
L187	-60 845.700	2 956 386.010		R190	-62 115.800	2 961 380.410
L188	-60 832.490	2 956 337.390		R191	-62 066.200	2 961 026.830
L189	-60 762.530	2 956 123.500		R192	-62 055.470	2 960 944.920
L190	-60 743.030	2 956 063.880		R193	-62 052.440	2 960 924.080
L191	-60 608.920	2 955 657.050		R194	-62 023.380	2 960 741.150
L192	-60 590.180	2 955 600.210		R195	-62 001.290	2 960 621.430
L193	-60 434.410	2 955 125.730		R196	-61 964.370	2 960 424.420
L194	-60 361.870	2 954 905.450		R197	-61 878.940	2 959 984.740
L195	-60 307.540	2 954 740.500		R198	-61 860.280	2 959 891.590
L196	-60 268.050	2 954 631.650		R199	-61 808.750	2 959 634.280
L197	-60 235.930	2 954 563.120		R200	-61 753.230	2 959 375.390
L198	-60 226.470	2 954 546.600		R201	-61 743.240	2 959 324.500
L199	-60 202.450	2 954 504.660		R202	-61 726.200	2 959 312.790
L200	-59 928.420	2 954 086.250		R203	-61 615.250	2 959 133.790
L201	-59 655.070	2 953 668.580		R204	-61 602.110	2 959 104.740

Vel	15	Van	18	P771/09
Sheet		of		

PADRESERWE KOÖRDINATE / ROAD RESERVE CO-ORDINATES									
LINKERKANT/LEFT HAND SIDE					REGTERKANT/RIGHT HAND SIDE				
	Y	X	WG 29°		Y	X			
L202	-59 383.940	2 953	256.470	R205	-61 607.550	2 959	024.120		
L203	-59 091.740	2 952	812.450	R206	-61 403.320	2 957	871.990		
L204	-59 034.570	2 952	725.310	R207	-61 254.890	2 957	626.410		
L205	-58 860.440	2 952	459.910	R208	-61 232.480	2 957	587.960		
L206	-58 812.230	2 952	386.440	R209	-61 179.530	2 957	484.980		
L207	-58 661.160	2 952	157.190	R210	-61 162.860	2 957	450.080		
L208	-58 554.900	2 951	980.880	R211	-61 118.160	2 957	356.330		
L209	-58 530.970	2 951	936.570	R212	-61 066.450	2 957	245.220		
L210	-58 372.980	2 951	650.260	R213	-61 041.820	2 957	181.830		
L211	-58 066.350	2 951	092.880	R214	-61 024.890	2 957	129.840		
L212	-58 018.860	2 951	013.150	R215	-61 009.750	2 957	077.100		
L213	-57 952.480	2 950	909.860	R216	-60 986.940	2 956	954.680		
L214	-57 781.170	2 950	656.670	R217	-60 950.890	2 956	740.700		
L215	-57 666.080	2 950	486.570	R218	-60 910.580	2 956	505.580		
L216	-57 384.940	2 950	070.990	R219	-60 898.980	2 956	446.350		
L217	-57 029.870	2 949	547.000	R220	-60 884.860	2 956	385.560		
L218	-56 951.980	2 949	422.760	R221	-60 867.890	2 956	325.900		
L219	-56 902.930	2 949	333.750	R222	-60 778.540	2 956	050.610		
L220	-56 744.540	2 949	019.360	R223	-60 765.280	2 956	009.830		
L221	-56 694.400	2 948	919.830	R224	-60 736.950	2 955	922.750		
L222	-56 495.930	2 948	524.950	R225	-60 727.070	2 955	895.660		
L223	-56 449.930	2 948	433.430	R226	-60 648.240	2 955	656.580		
L224	-56 302.540	2 948	140.260	R227	-60 630.360	2 955	602.360		
L225	-56 224.880	2 947	985.780	R228	-60 469.980	2 955	113.090		
L226	-56 128.190	2 947	793.350	R229	-60 398.870	2 954	897.590		
L227	-56 001.150	2 947	540.490	R230	-60 389.290	2 954	868.530		
L228	-55 905.960	2 947	351.550	R231	-60 343.920	2 954	731.040		
L229	-55 892.200	2 947	320.700	R232	-60 263.150	2 954	533.870		
L230	-55 662.260	2 946	869.480	R233	-60 256.630	2 954	521.980		
L231	-55 450.450	2 946	451.600	R234	-60 232.850	2 954	478.610		
L232	-55 216.830	2 945	990.440	R235	-59 961.820	2 954	067.380		
L233	-54 992.960	2 945	547.500	R236	-59 685.500	2 953	646.200		
L234	-54 903.560	2 945	371.360	R237	-59 431.980	2 953	262.330		
L235	-54 880.250	2 945	325.410	R238	-59 407.010	2 953	224.520		
L236	-54 755.790	2 945	080.170	R239	-59 110.120	2 952	772.360		
L237	-54 530.620	2 944	635.430	R240	-58 882.950	2 952	427.060		
L238	-54 487.290	2 944	549.920	R241	-58 842.440	2 952	365.480		
L239	-54 431.990	2 944	440.770	R242	-58 691.520	2 952	135.260		
L240	-54 393.220	2 944	364.250	R243	-58 628.390	2 952	035.930		
L241	-54 304.130	2 944	188.420	R244	-58 590.210	2 951	967.580		
L242	-54 161.320	2 943	905.770	R245	-58 566.010	2 951	913.300		
L243	-54 078.720	2 943	742.300	R246	-58 400.000	2 951	606.130		
L244	-53 839.560	2 943	270.410	R247	-58 102.430	2 951	080.780		
L245	-53 758.220	2 943	107.850	R248	-58 051.040	2 950	993.870		
L246	-53 739.120	2 943	068.980	R249	-57 985.180	2 950	891.100		
L247	-53 658.590	2 942	873.440	R250	-57 827.110	2 950	656.950		
L248	-53 588.840	2 942	698.460	R251	-56 994.820	2 949	416.860		
L249	-53 466.920	2 942	380.960	R252	-56 928.180	2 949	299.430		
L250	-53 344.090	2 942	060.320	R253	-56 786.110	2 949	017.830		
L251	-53 232.840	2 941	770.220	R254	-56 715.410	2 948	877.690		
L252	-53 194.150	2 941	669.340	R255	-56 540.240	2 948	529.430		

Vel	16	Van	18	P771/09
Sheet		of		

PADRESERWE KOÖRDINATE / ROAD RESERVE CO-ORDINATES							
LINKERKANT/LEFT HAND SIDE				REGTERKANT/RIGHT HAND SIDE			
	Y	X	WG 29°		Y	X	
L253	-53 165.500	2 941	594.650	R256	-56 481.880	2 948	413.420
L254	-52 999.750	2 941	161.940	R257	-56 346.320	2 948	143.930
L255	-52 930.840	2 940	989.570	R258	-56 258.420	2 947	969.190
L256	-52 909.080	2 940	951.630	R259	-56 171.700	2 947	796.670
L256X	-52 897.680	2 940	932.260	R260	-56 033.640	2 947	522.010
L257	-52 856.750	2 940	862.690	R261	-55 930.810	2 947	317.180
L258	-52 705.960	2 940	606.480	R262	-55 921.400	2 947	298.180
L259	-52 668.640	2 940	544.220	R263	-55 695.050	2 946	851.560
L260	-52 662.550	2 940	543.610	R264	-55 474.110	2 946	415.370
L261	-52 634.020	2 940	497.550	R265	-55 436.480	2 946	341.080
L262	-52 622.440	2 940	464.800	R266	-55 251.130	2 945	975.120
L263	-52 527.510	2 940	304.560	R267	-55 027.200	2 945	533.220
L264	-52 368.060	2 940	035.410	R268	-54 934.330	2 945	350.390
L265	-52 097.180	2 939	576.470	R269	-54 873.810	2 945	231.230
L266	-51 868.840	2 939	126.610	R270	-54 788.050	2 945	062.400
L267	-51 810.090	2 939	009.690	R271	-54 563.020	2 944	617.540
L268	-51 596.970	2 938	585.530	R272	-54 516.930	2 944	526.760
L269	-51 418.230	2 938	229.190	R273	-54 336.700	2 944	171.740
L270	-51 325.860	2 938	044.900	R274	-54 201.580	2 943	903.520
L271	-51 194.010	2 937	781.850	R275	-54 105.500	2 943	712.790
L272	-50 970.190	2 937	334.890	R276	-53 876.200	2 943	259.530
L273	-50 796.070	2 936	990.050	R277	-53 792.340	2 943	097.520
L274	-50 571.540	2 936	541.240	R278	-53 772.970	2 943	056.850
L275	-50 373.390	2 936	140.660	R279	-53 690.860	2 942	856.700
L276	-50 365.140	2 936	121.370	R280	-53 619.540	2 942	674.120
L277	-50 344.900	2 936	069.330	R281	-53 500.670	2 942	364.310
L278	-50 163.930	2 935	602.700	R282	-53 377.770	2 942	043.830
L279	-50 050.790	2 935	310.380	R283	-53 267.340	2 941	755.720
L280	-49 834.060	2 934	749.960	R284	-53 219.060	2 941	629.770
L281	-49 777.140	2 934	602.890	R285	-53 199.210	2 941	577.980
L282	-49 727.540	2 934	473.400	R286	-53 034.900	2 941	148.780
L283	-49 599.420	2 934	138.860	R287	-52 979.950	2 941	003.810
L284	-49 466.960	2 933	795.460	R288	-52 952.750	2 940	959.210
L285	-49 287.210	2 933	327.810	R289	-52 906.470	2 940	878.880
L286	-49 225.670	2 933	168.780	R290	-52 804.550	2 940	702.070
L287	-49 222.260	2 933	162.150	R291	-52 733.130	2 940	578.180
L288	-49 203.660	2 933	126.060	R292	-52 657.680	2 940	451.770
L289	-49 155.820	2 932	984.910	R293	-52 572.030	2 940	306.890
L290	-48 975.910	2 932	517.970	R294	-52 389.040	2 939	997.320
L291	-48 795.810	2 932	051.070	R295	-52 136.540	2 939	569.730
L292	-48 762.700	2 931	962.900	R296	-52 093.300	2 939	490.260
L293	-48 724.920	2 931	859.270	R297	-51 901.770	2 939	109.130
L294	-48 555.110	2 931	389.010	R298	-51 802.130	2 938	910.120
L295	-48 385.570	2 930	918.620	R299	-51 642.200	2 938	590.770
L296	-48 363.200	2 930	856.620	R300	-51 443.860	2 938	196.360
L297	-48 219.470	2 930	458.080	R301	-51 369.830	2 938	049.980
L298	-48 046.400	2 929	977.900	R302	-51 226.660	2 937	763.470
L299	-47 935.280	2 929	671.420	R303	-51 002.340	2 937	316.300
L300	-47 890.000	2 929	546.520	R304	-50 765.770	2 936	845.080
L301	-47 870.710	2 929	486.660	R305	-50 604.770	2 936	523.540
L302	-47 873.000	2 929	443.560	R306	-50 425.350	2 936	164.700

Vel	17	Van	18	P771/09
Sheet		of		

PADRESERWE KOÖRDINATE / ROAD RESERVE CO-ORDINATES						
LINKERKANT/LEFT HAND SIDE				REGTERKANT/RIGHT HAND SIDE		
	Y	X	WG 29°		Y	X
L303	-47 885.780	2 929 392.260		R307	-50 403.990	2 936 119.250
				R308	-49 876.780	2 934 753.670
				R309	-49 769.350	2 934 475.410
				R310	-49 246.530	2 933 121.200
				R311	-49 191.270	2 932 972.900
				R312	-49 011.520	2 932 505.890
				R313	-48 831.360	2 932 038.990
				R314	-48 798.170	2 931 950.800
				R315	-48 760.210	2 931 846.530
				R316	-48 590.370	2 931 376.250
				R317	-48 420.820	2 930 905.880
				R318	-48 405.100	2 930 862.270
				R319	-48 251.220	2 930 435.510
				R320	-48 081.700	2 929 965.140
				R321	-48 002.170	2 929 738.990
				R322	-47 946.560	2 929 590.610
				R323	-47 925.250	2 929 533.740
				R324	-47 908.520	2 929 481.740
				R325	-47 910.220	2 929 449.780
				R326	-47 922.060	2 929 412.250

Vel	18	Van	18	P771/09
Sheet		of		

Printed by and obtainable from the Government Printer, Bosman Street, Private Bag X85, Pretoria, 0001

Publications: Tel: (012) 748 6052, 748 6053, 748 6058

Advertisements: Tel: (012) 748 6205, 748 6208, 748 6209, 748 6210, 748 6211

Subscriptions: Tel: (012) 748 6054, 748 6055, 748 6057

Gedruk deur en verkrygbaar by die Staatsdrukker, Bosmanstraat, Privaatsak X85, Pretoria, 0001

Publikasies: Tel: (012) 748 6052, 748 6053, 748 6058

Advertensies: Tel: (012) 748 6205, 748 6208, 748 6209, 748 6210, 748 6211

Subskripsies: Tel: (012) 748 6054, 748 6055, 748 6057