



# Government Gazette Staatskoerant

REPUBLIC OF SOUTH AFRICA  
REPUBLIEK VAN SUID-AFRIKA

Vol. 601

Pretoria, 1 July  
Julie 2015

**No. 38936**

*N.B. The Government Printing Works will not be held responsible for the quality of "Hard Copies" or "Electronic Files" submitted for publication purposes*



9771682584003



**AIDS HELPLINE: 0800-0123-22 Prevention is the cure**

**DISCLAIMER:**

Government Printing Works reserves the right to apply the 25% discount to all Legal and Liquor notices that comply with the business rules for notice submissions for publication in gazettes.

National, Provincial, Road Carrier Permits and Tender notices will pay the price as published in the Government Gazettes.

For any information, please contact the eGazette Contact Centre on 012-748 6200 or email [info.egazette@gpw.gov.za](mailto:info.egazette@gpw.gov.za)

**CONTENTS****INHOUD**

<i>No.</i>	<i>Page No.</i>	<i>Gazette No.</i>	<i>No.</i>	<i>Bladsy No.</i>	<i>Koerant No.</i>
<b>GOVERNMENT NOTICE</b>			<b>GOEWERMENTSKENNISGEWING</b>		
<b>Transport, Department of</b>			<b>Vervoer, Departement van</b>		
<i>Government Notice</i>			<i>Goewermentskennisgewing</i>		
555		South African National Roads Agency Limited and National Roads Act (7/1998): Declaration amendment of National Road R21 Section 1 .....	3	38936	
			555		Suid-Afrikaanse Nasionale Padagentskap Beperk en op Nasionale Paaie Wet (7/1998): Verklaring wysiging van Nasionale Pad R21 Seksie 1 .....
			4	38936	

---

## GOVERNMENT NOTICE

---

### DEPARTMENT OF TRANSPORT

No. 555

1 July 2015

## THE SOUTH AFRICAN NATIONAL ROADS AGENCY SOC LIMITED

Registration No: 1998/009584/30

### DECLARATION AMENDMENT OF NATIONAL ROAD R21 SECTION 1

#### AMENDMENT OF DECLARATION No. 409 OF 2008

By virtue of Section 40 (1)(b) of The South African National Roads Agency Limited and National Roads Act, 1998 (Act No. 7 of 1998), I hereby amend Declaration No. 409 of 2008 by substituting the section from points L374 and R321 up to points L181 and R143 thereof, with the subjoined sheets 1 to 19 of Plan No. P826/14.

(National Road R21 Section 1: Rietfontein I/C – Olifantsfontein I/C)



MINISTER OF TRANSPORT

---

## GOEWERMENSKENNISGEWING

---

### DEPARTEMENT VAN VERVOER

No. 555

1 Julie 2015

## DIE SUID-AFRIKAANSE NASIONALE PADAGENTSKAP MSB BEPERK

Registrasie No: 1998/009584/30

### VERKLARING WYSIGING VAN NASIONALE PAD R21 SEKSIE 1

#### WYSIGING VAN VERKLARING NO. 409 VAN 2008

Kragtens Artikel 40(1)(b) van die Wet op die Suid-Afrikaanse Nasionale Padagentskap Beperk en op Nasionale Paaie, 1998 (Wet No. 7 van 1998), wysig ek hiermee Verklaring no. 409 van 2008 deur die gedeelte vanaf punte L374 en R321 tot by punte L181 en R143 daarvan, te vervang met bygaande velle 1 tot 19 van Plan No. P826/14.

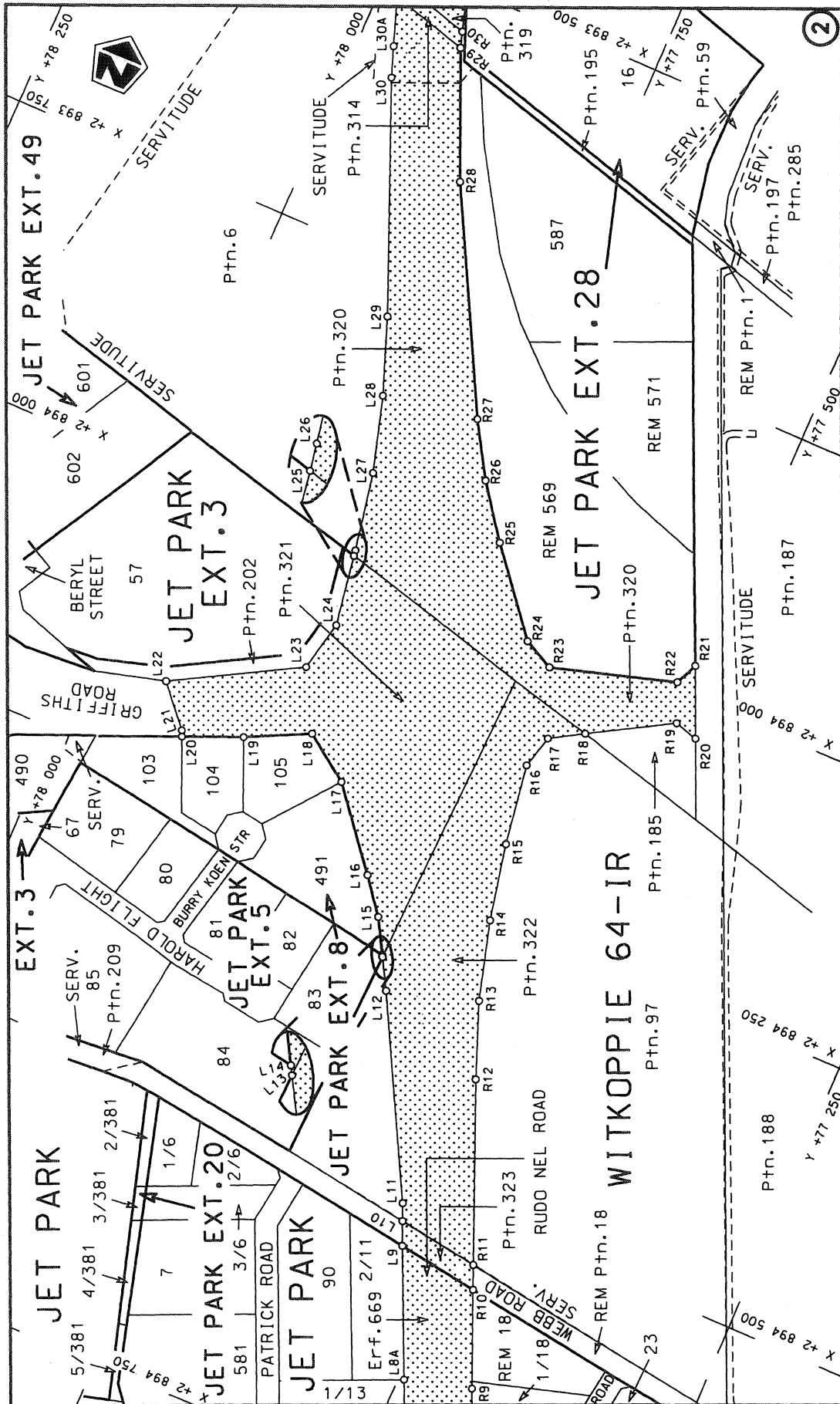
(Nasionale Pad R21 Seksie 1: Rietfontein wisselaar – Olifantsfontein wisselaar)

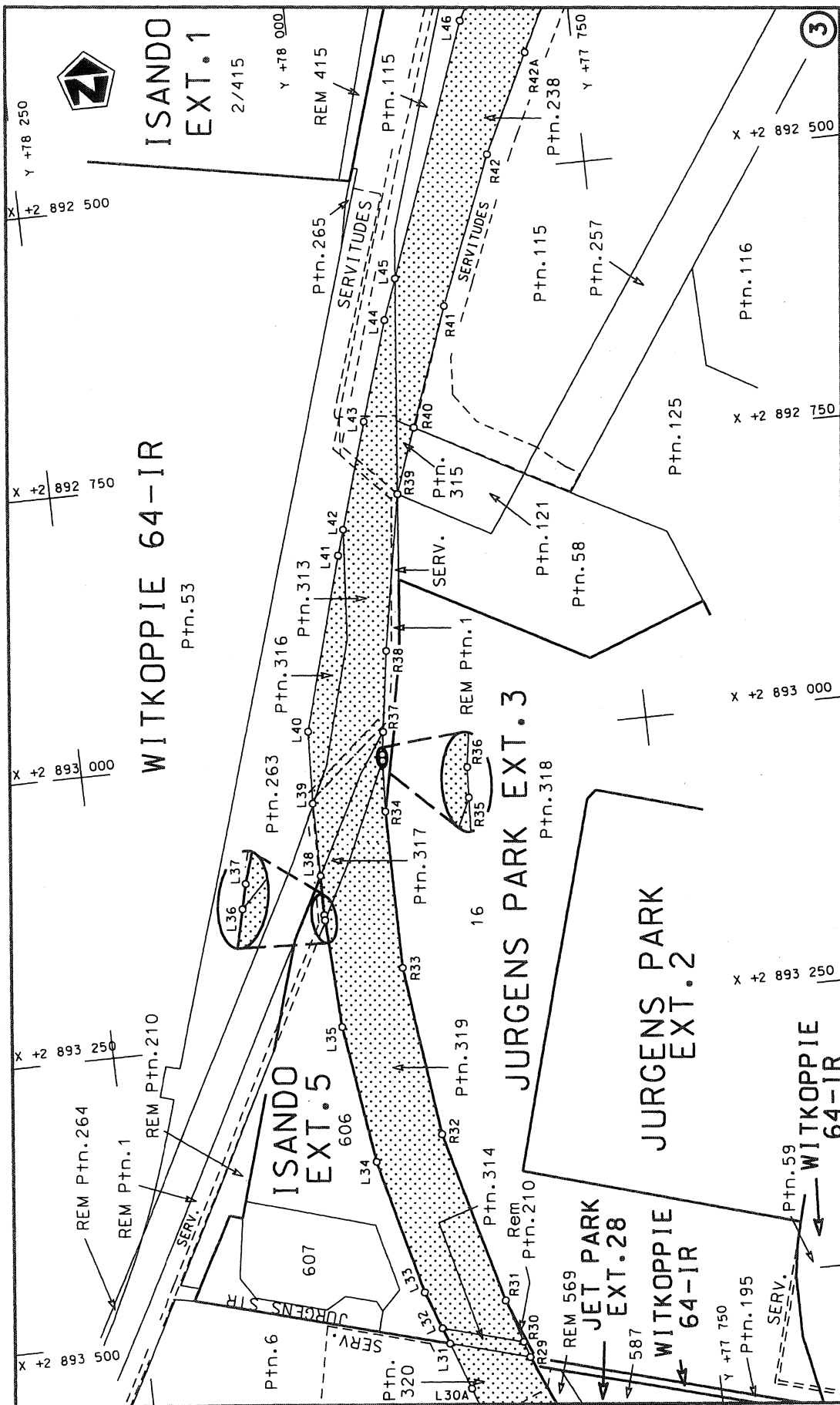
---

MINISTER VAN VERVOER

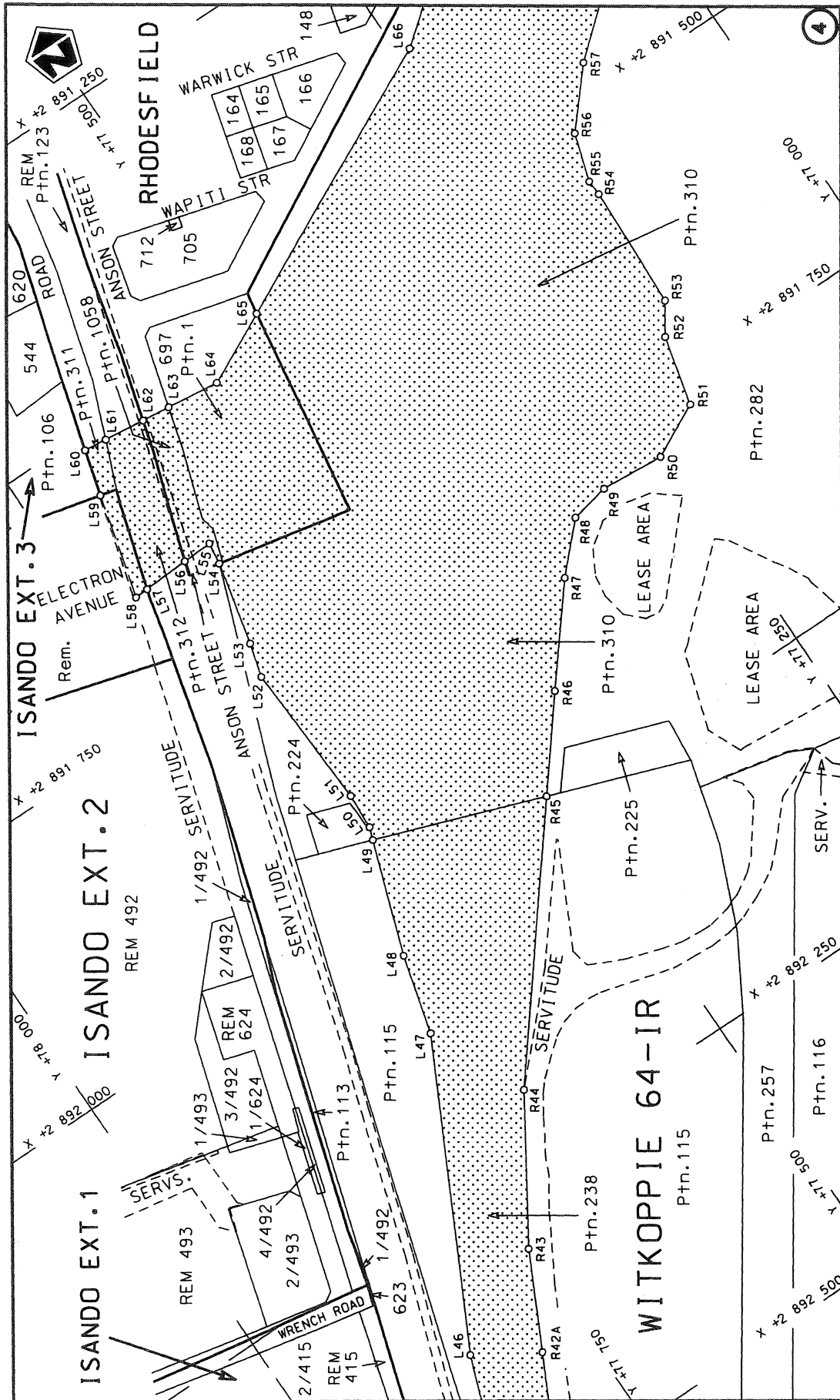




Die Suid Afrikaanse Nasionale Padagentskap Beperk The South African National Roads Agency Limited	Die figuur getoon The figure shown	steldie padreserwe voor van 'n gedeelte represents the road reserve of a portion van Nasionale Roete R21 of National Route R21 Section	Vel Sheet 2 of 19 Plan P826/14
--	---------------------------------------	---	--------------------------------------

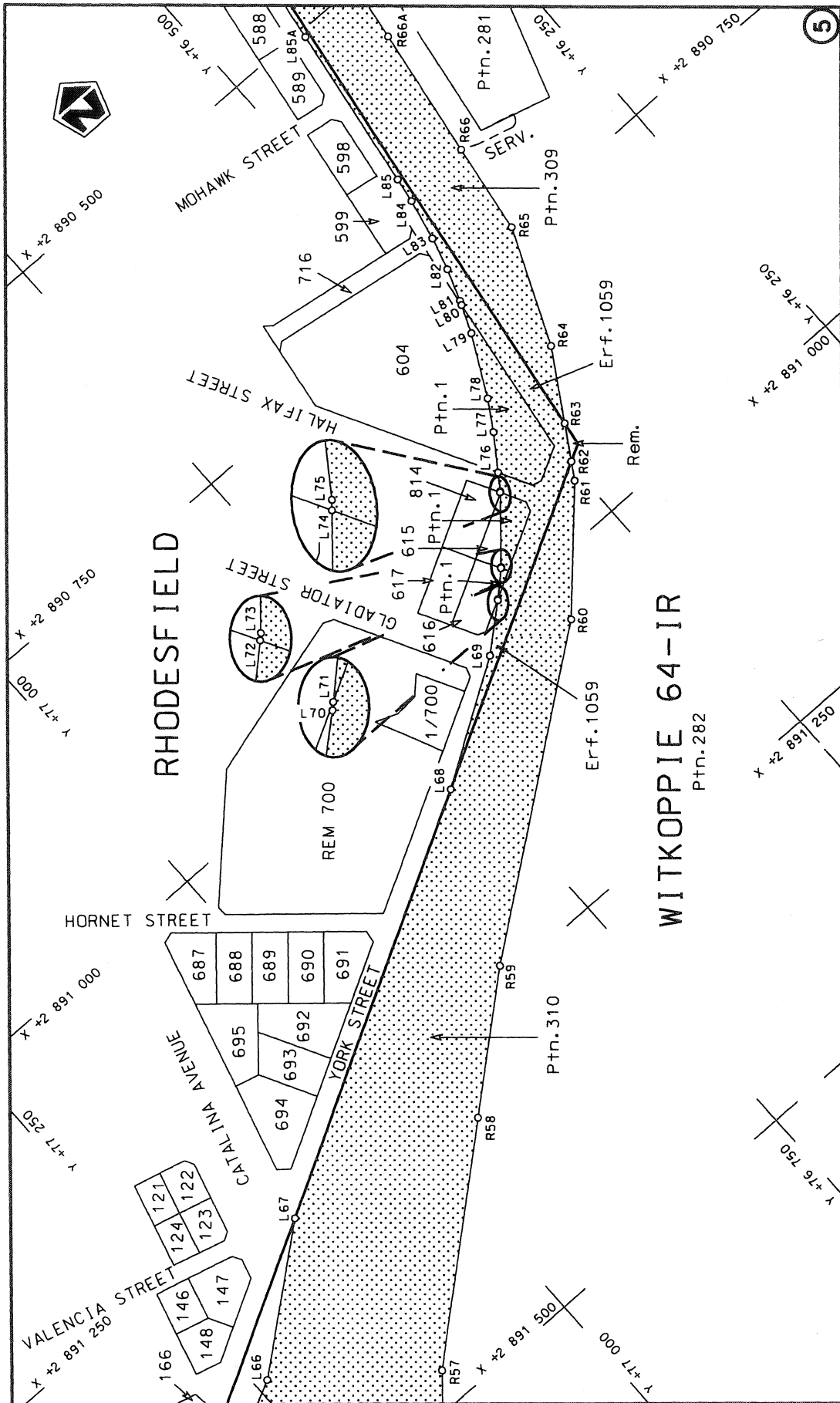


<p>Die Suid Afrikaanse Nasionale Padagentskap Beperk The South African National Roads Agency Limited</p>	<p>Die figuur getoon The figure shown</p>	<p>steldie padreserwe voor van 'n gedeelte represents the road reserve of a portion van Nasionale Roete R21 of National Route</p>	<p>Vel Sheet 3 of 19 Plan P826/14</p>
<p>1</p>		<p>Seksie Section</p>	<p>R21</p>

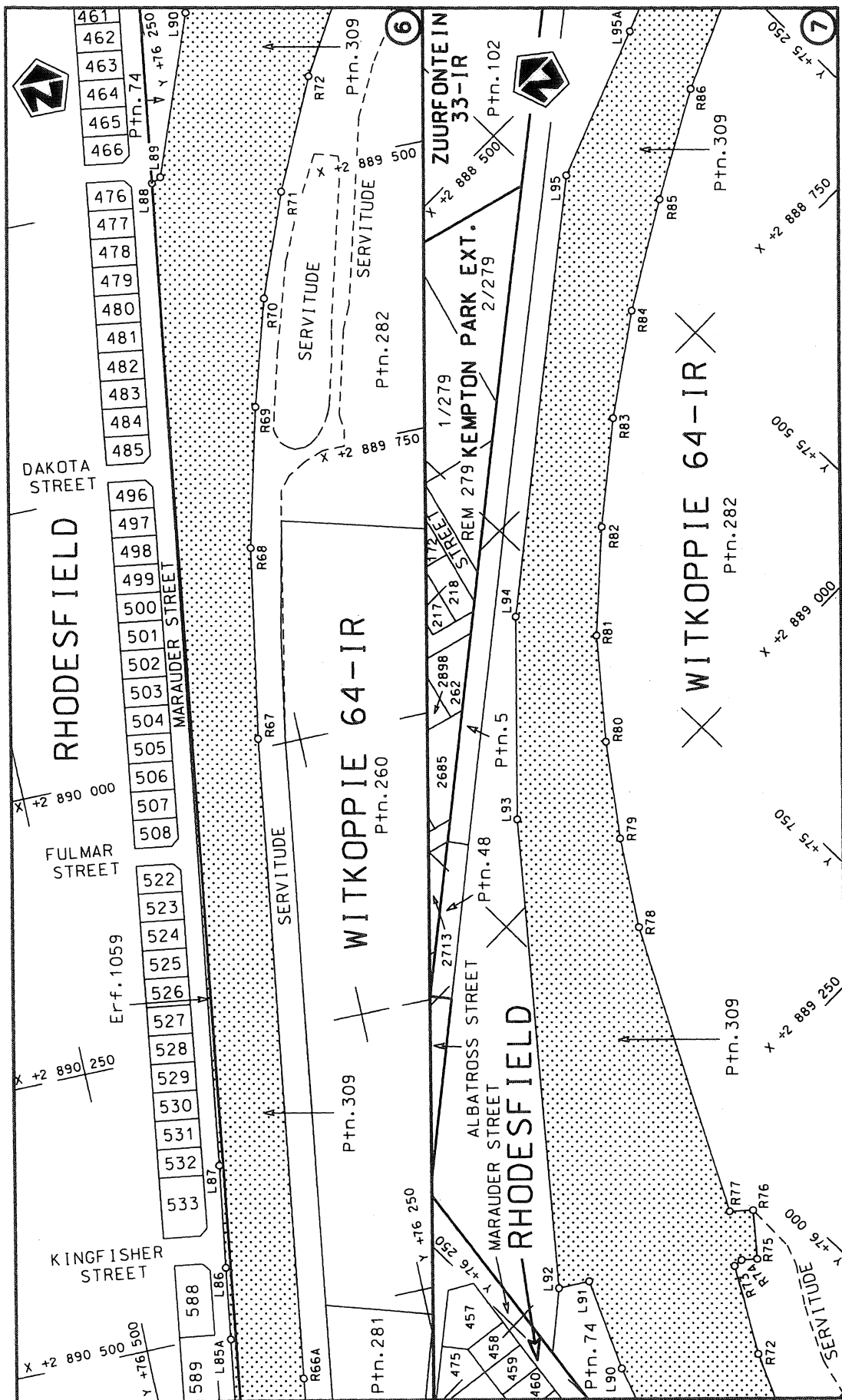


Die Suid Afrikaanse Nasionale Padagentskap Beperk The South African National Roads Agency Limited	Die figuur getoon The figure shown	steldie padreserwe voor van 'n gedeelte represents the road reserve of a portion van Nasionale Roete R21 of National Route R21 Section	Vel Sheet 4 of 19 Plan P826/14
--	---------------------------------------	---	-----------------------------------

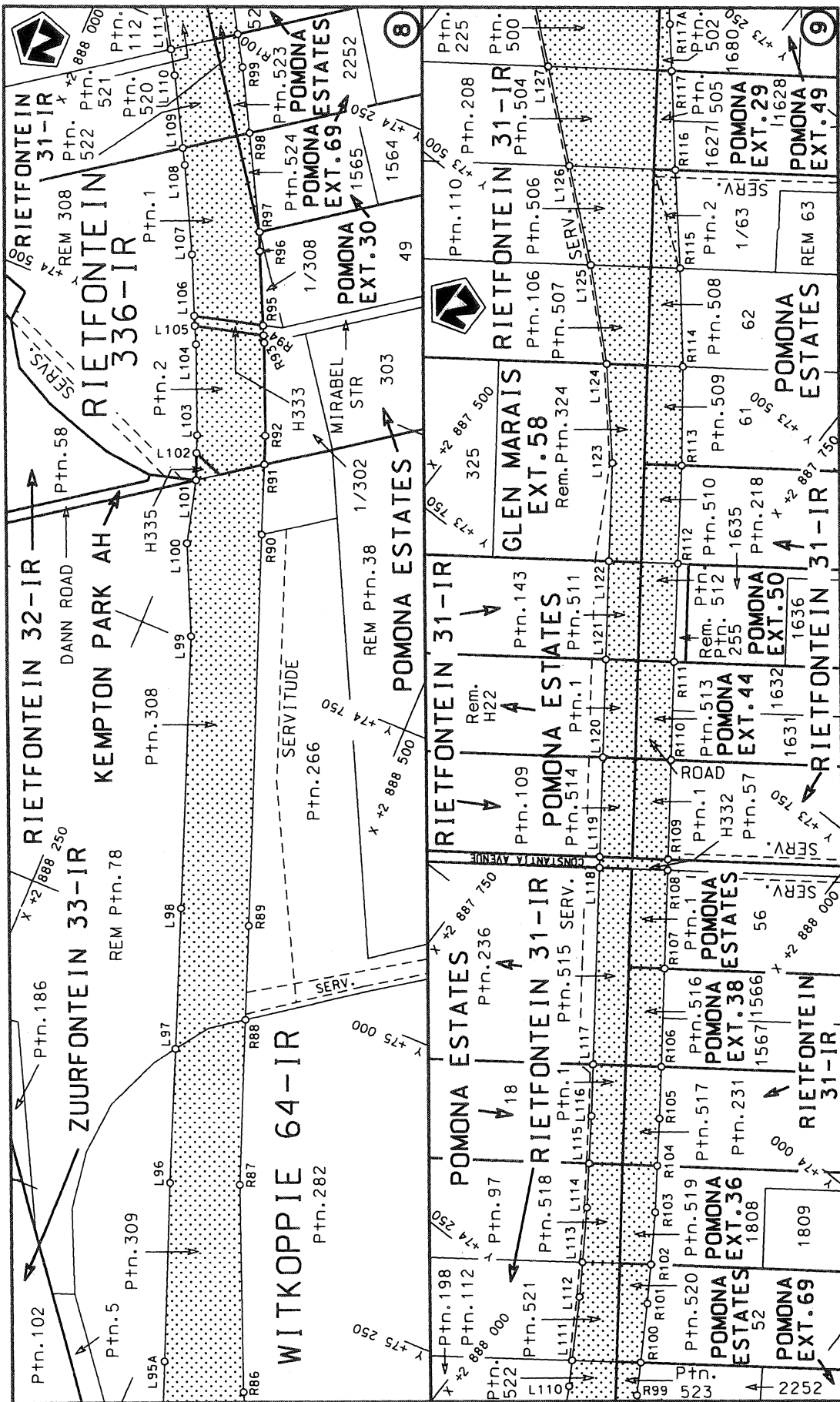




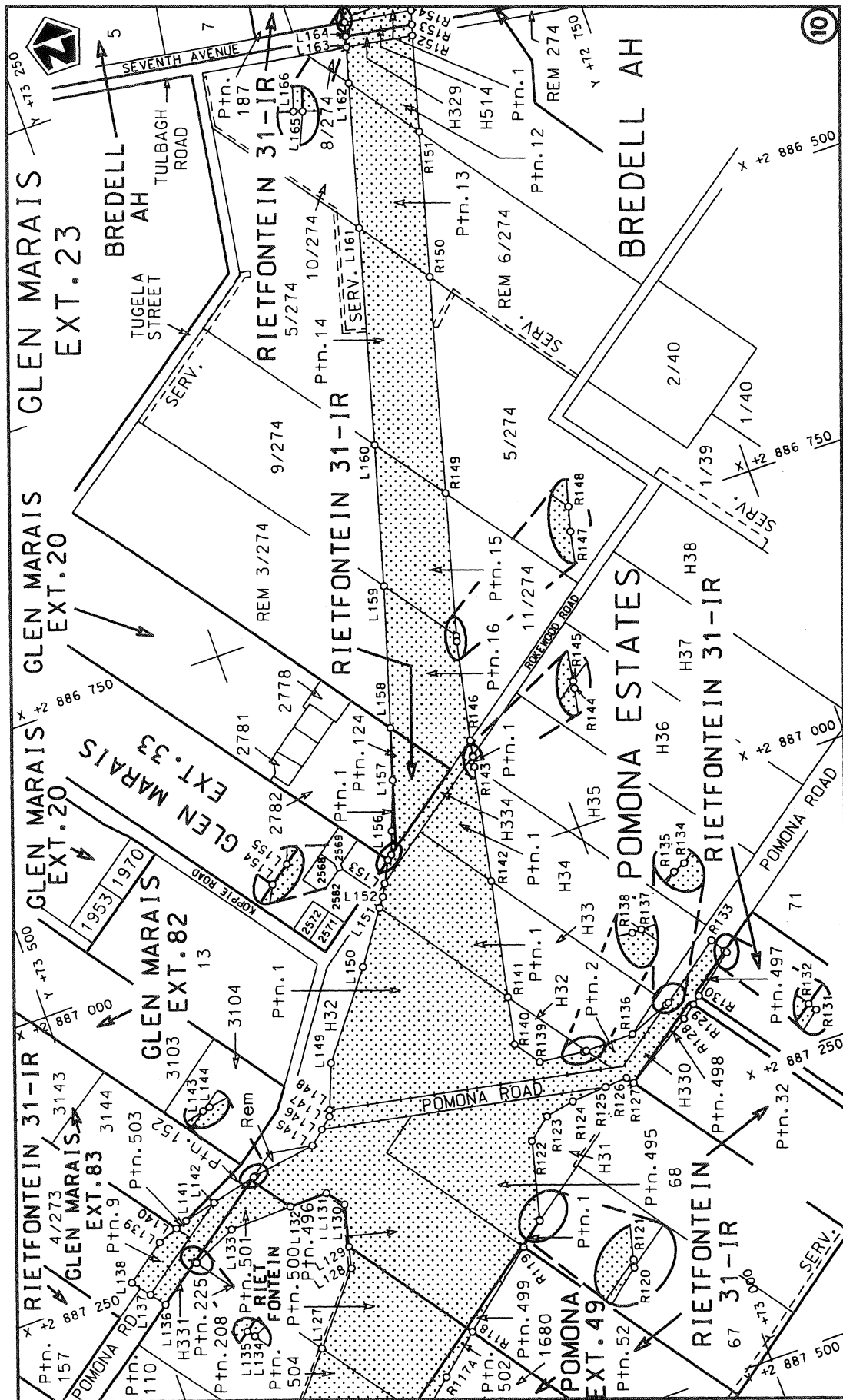
<p>Die Suid Afrikaanse Nasionale Padagentskap Beperk The South African National Roads Agency Limited</p>	<p>Die figuur getoon The figure shown</p>	<p>steldie padreserwe voor van 'n gedeelte represents the road reserve of a portion van Nasionale Roete R21 of National Route</p>	<p>Vel Sheet 5 of 19</p>
<p>Die figuur getoon The figure shown</p>		<p>1</p>	<p>Plan P826/14</p>



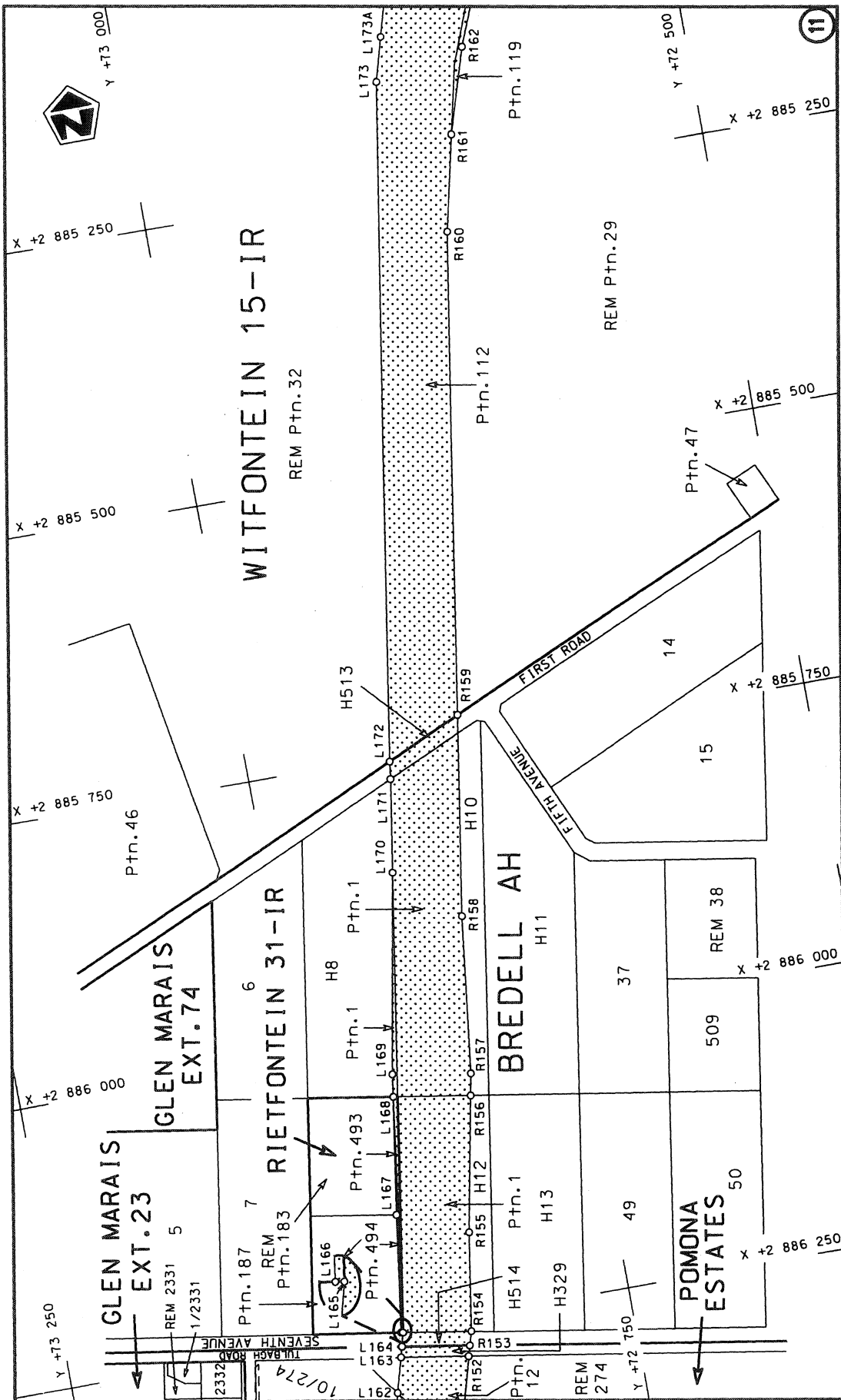
Vel Sheet 6 of 19	steldie padreserwe voor van 'n gedeelte represents the road reserve of a portion van Nasionale Roete R21 of National Route Seksie Section 1	Die Suid Afrikaanse Nasionale Padagentskap Beperk The South African National Roads Agency Limited
Plan P826/14	Die figuur getoon The figure shown	Die figuur getoon The figure shown



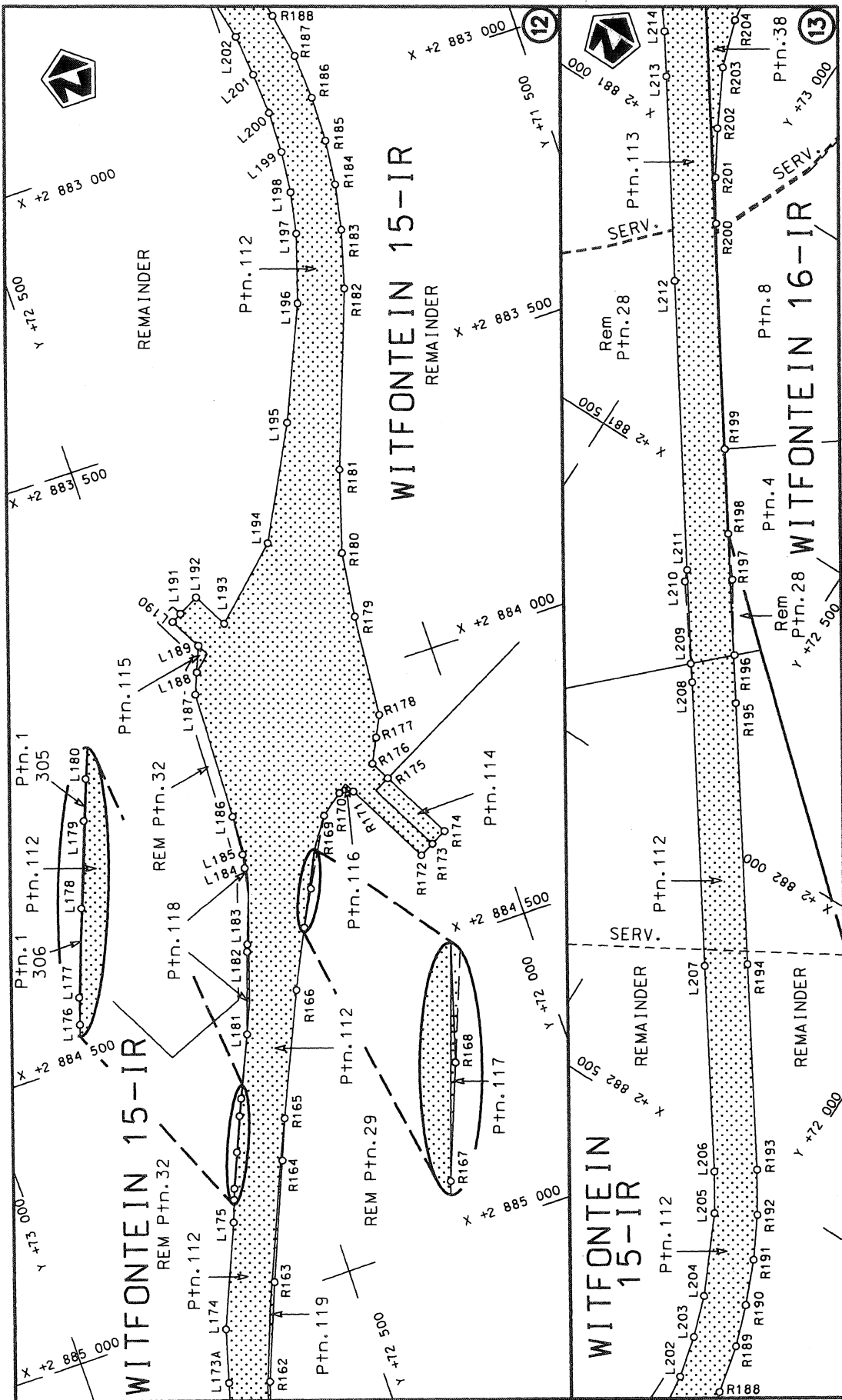
<p>Die Suid Afrikaanse Nasionale Padagentskap Beperk The South African National Roads Agency Limited</p>	<p>Die figuur getoon The figure shown</p>	<p>steldie padreserwe voor van 'n gedeelte represents the road reserve of a portion van Nasionale Roete R21 of National Route</p>	<p>Vel Sheet 7 of 19 Plan P826/14</p>
--	---	---	---



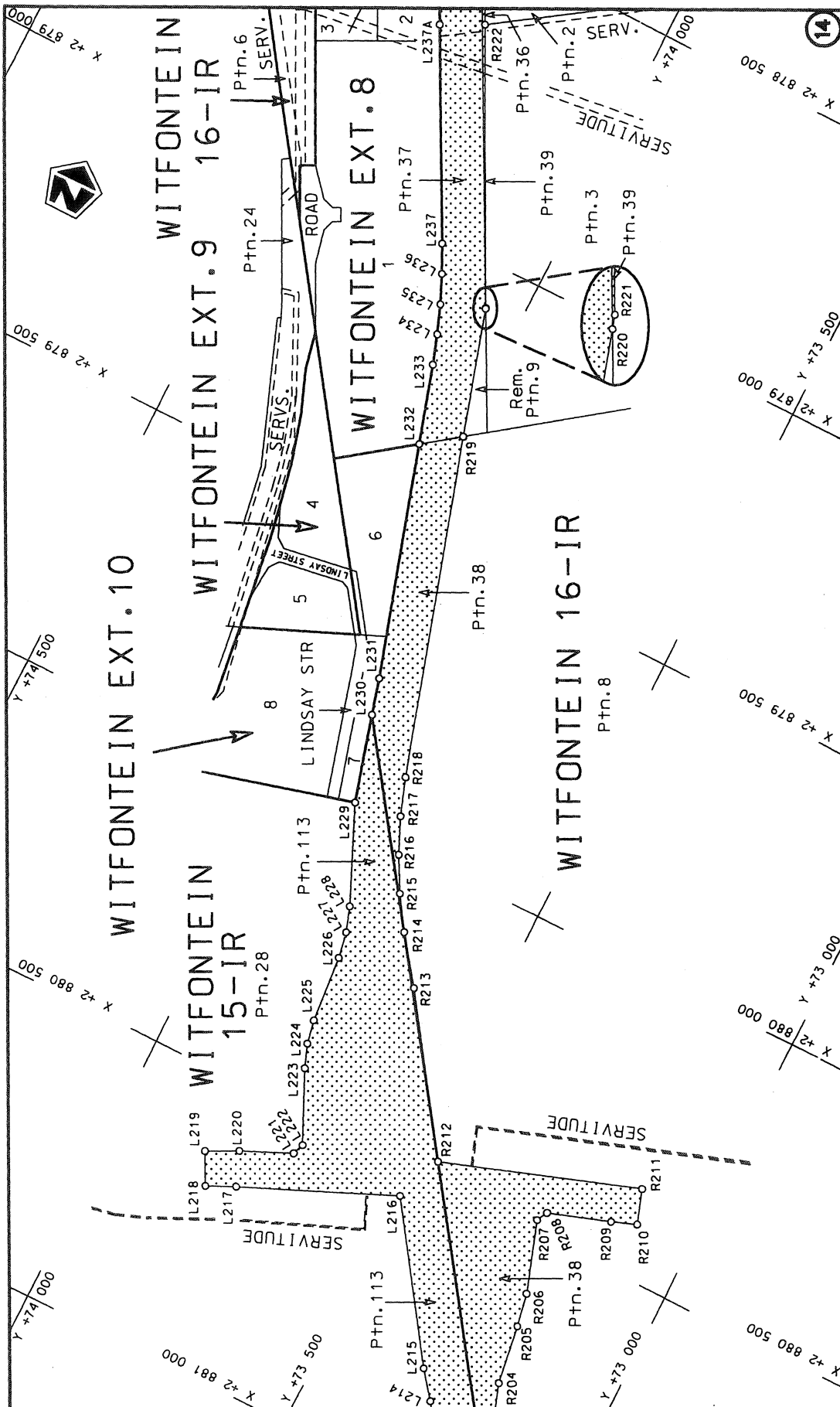
<p>Die Suid Afrikaanse Nasionale Padagentskap Beperk The South African National Roads Agency Limited</p>	<p>Die figuur getoon The figure shown</p>	<p>stel die podreserwe voor van 'n gedeelte represents the road reserve of a portion van Nasionale Roete R21 of National Route</p>	<p>Vel Sheet 8 of 19</p>	<p>1</p>	<p>Plan P826/14</p>
--	---	--	------------------------------	----------	---------------------

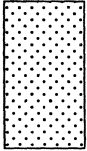


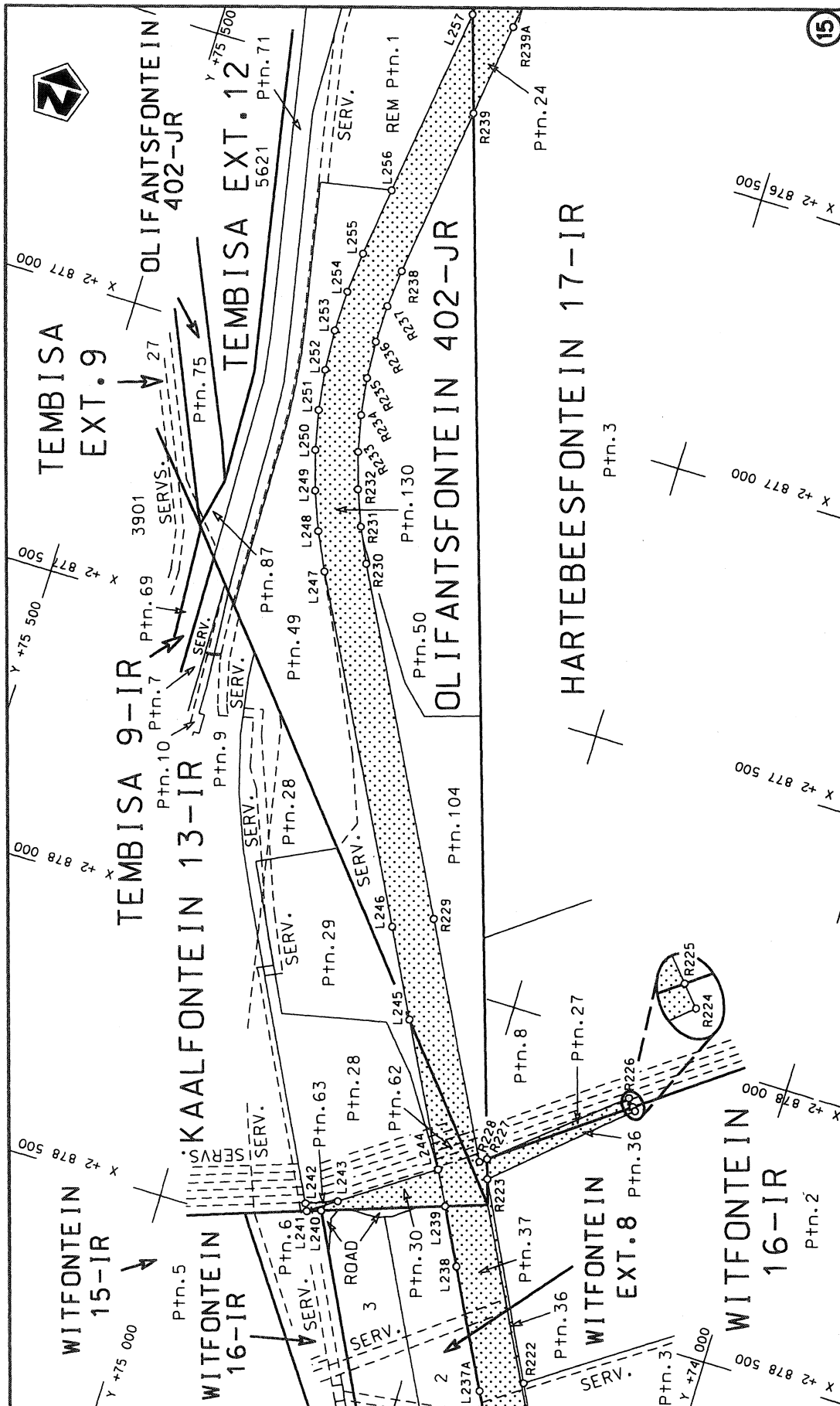
Die Suid Afrikaanse Nasionale Padagentskap Beperk The South African National Roads Agency Limited	Die figuur getoon The figure shown	steldie padreserwe voor van 'n gedeelte represents the road reserve of a portion van Nasionale Roete R21 of National Route Section 1	Vel Sheet 9 of 19 Plan P826/14
--	---------------------------------------	---	-----------------------------------



<p>Die Suid Afrikaanse Nasionale Padagentskap Beperk The South African National Roads Agency Limited</p>	<p>Die figuur getoon The figure shown</p>	<p>steldie padreserwe voor van 'n gedeelte represents the road reserve of a portion van Nasionale Roete R21 Seksie of National Route R21 Section</p>	<p>Vel Sheet 10 of 19</p>
<p>REMAINDER</p>		<p>1</p>	<p>Plan P826/14</p>

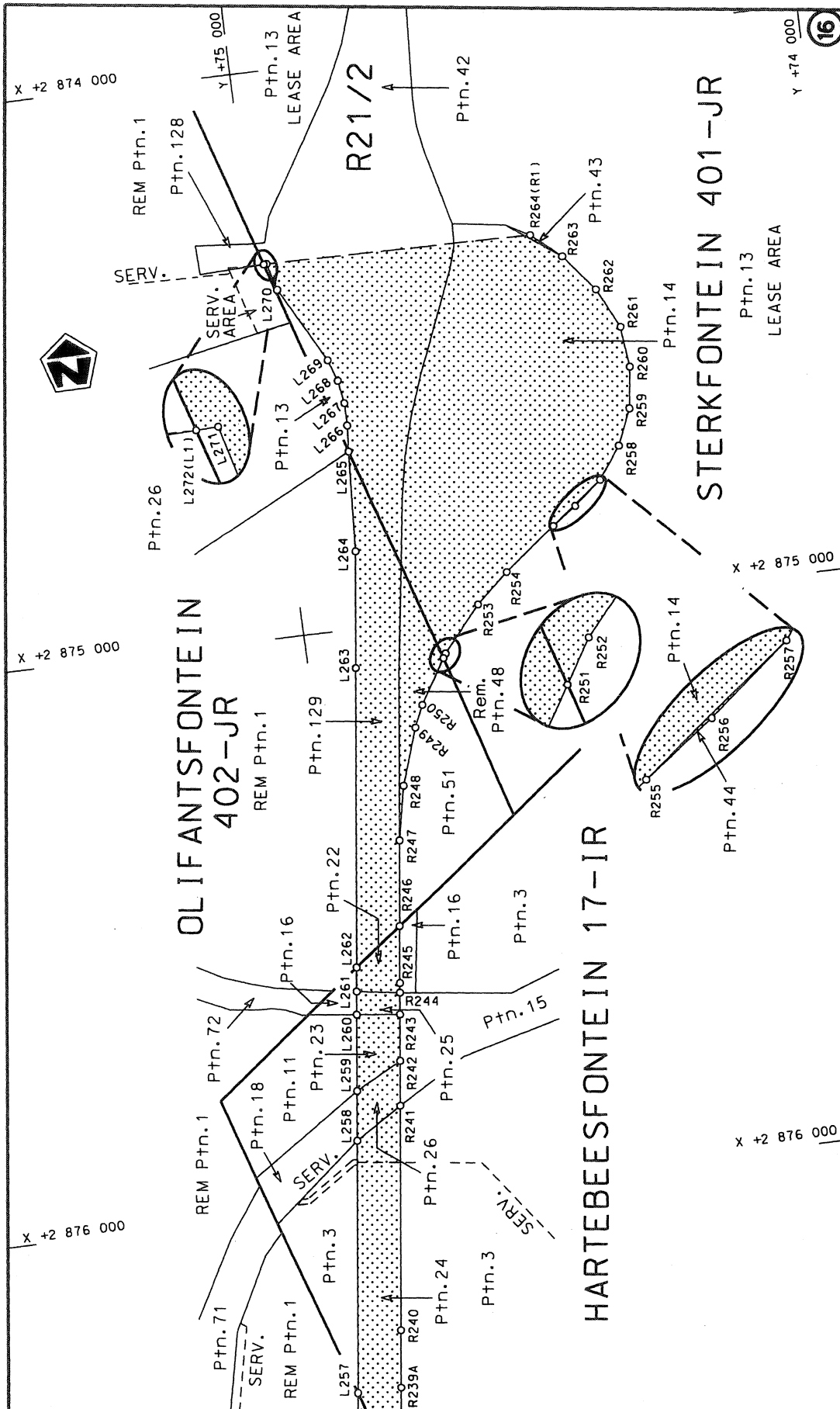


<p>Die Suid Afrikaanse Nasionale Padagentskap Beperk The South African National Roads Agency Limited</p>	<p>Die figuur getoon The figure shown</p>  <p>steldie padreserwe voor van 'n gedeelte represents the road reserve of a portion van Nasionale Roete R21 of National Route</p>	<p>Vel Sheet 11 of 19 Plan P826/14</p>
--	---	--



Die Suid Afrikaanse Nasionale Padagentskap Beperk The South African National Roads Agency Limited	Die figuur getoon The figure shown	steldie podreserwe voor van 'n gedeelte represents the road reserve of a portion van Nasionale Roete R21 of National Route Section	Vel Sheet 12 of 19
			Plan P826/14





PADRESERWE KOÖRDINATE / ROAD RESERVE CO-ORDINATES						
LINKERKANT/LEFT HAND SIDE				REGTERKANT/RIGHT HAND SIDE		
	Y	X	WG 29°		Y	X
L1	77 037.96	2 895	698.18	R1	76 981.36	2 895 672.90
L2	77 044.23	2 895	683.36	R2	76 996.21	2 895 639.36
L3	77 055.52	2 895	656.70	R3	77 000.21	2 895 630.32
L4	77 151.92	2 895	436.82	R4	77 079.12	2 895 449.37
L5	77 163.60	2 895	410.31	R5	77 087.04	2 895 433.52
L6	77 181.94	2 895	367.63	R6	77 127.67	2 895 342.15
L7	77 346.16	2 894	994.22	R7	77 289.58	2 894 974.69
L8	77 477.84	2 894	694.62	R8	77 423.61	2 894 670.44
L9	77 542.45	2 894	548.72	R9	77 436.97	2 894 639.77
L10	77 550.88	2 894	528.64	R10	77 470.32	2 894 559.26
L11	77 557.00	2 894	514.00	R11	77 478.54	2 894 539.22
L12	77 644.01	2 894	347.07	R12	77 540.97	2 894 387.02
L13	77 658.41	2 894	321.30	R13	77 565.50	2 894 322.38
L14	77 659.28	2 894	319.75	R14	77 584.06	2 894 254.02
L15	77 675.60	2 894	290.64	R15	77 597.94	2 894 186.05
L16	77 699.02	2 894	260.04	R16	77 608.93	2 894 113.91
L17	77 752.67	2 894	192.93	R17	77 601.05	2 894 084.78
L18	77 793.35	2 894	163.98	R18	77 572.58	2 894 067.60
L19	77 847.53	2 894	190.87	R19	77 502.35	2 894 026.71
L20	77 897.31	2 894	211.99	R20	77 481.62	2 894 032.81
L21	77 899.50	2 894	206.85	R21	77 507.04	2 893 973.60
L22	77 929.46	2 894	172.05	R22	77 516.04	2 893 993.16
L23	77 821.35	2 894	111.76	R23	77 624.50	2 894 026.21
L24	77 811.30	2 894	067.30	R24	77 651.39	2 894 012.78
L25	77 821.22	2 894	004.57	R25	77 708.35	2 893 942.45
L26	77 822.00	2 893	999.68	R26	77 741.84	2 893 895.52
L27	77 835.38	2 893	929.23	R27	77 769.90	2 893 848.56
L28	77 854.29	2 893	862.82	R28	77 867.48	2 893 661.23
L29	77 878.69	2 893	796.69	R29	77 914.79	2 893 551.06
L30	77 959.78	2 893	599.80	R30	77 919.08	2 893 537.09
L31	77 983.78	2 893	531.76	R31	77 930.81	2 893 498.95
L32	77 988.80	2 893	517.57	R32	77 970.10	2 893 347.77
L33	78 000.60	2 893	484.15	R33	77 987.81	2 893 198.09
L34	78 029.95	2 893	365.23	R34	77 987.53	2 893 058.18
L35	78 047.11	2 893	244.43	R35	77 985.06	2 893 013.72
L36	78 051.67	2 893	148.56	R36	77 984.76	2 893 008.38
L37	78 051.89	2 893	143.95	R37	77 981.79	2 892 988.62
L38	78 051.36	2 893	108.69	R38	77 971.03	2 892 917.13
L39	78 051.28	2 893	044.46	R39	77 945.62	2 892 778.44
L40	78 048.37	2 892	981.26	R40	77 925.00	2 892 721.39
L41	78 004.03	2 892	828.01	R41	77 886.99	2 892 616.21
L42	77 997.04	2 892	805.29	R42	77 834.70	2 892 485.30
L43	77 968.19	2 892	711.54	R43	77 750.86	2 892 317.57
L44	77 940.07	2 892	623.50	R44	77 674.73	2 892 198.06
L45	77 926.94	2 892	587.54	R45	77 511.85	2 891 993.91
L46	77 845.93	2 892	365.65	R46	77 452.95	2 891 920.10
L47	77 715.05	2 892	111.03	R47	77 389.54	2 891 842.39
L48	77 696.03	2 892	040.98	R48	77 351.02	2 891 802.54
L49	77 661.21	2 891	941.05	R49	77 315.33	2 891 795.49
L50	77 657.35	2 891	929.96	R50	77 257.54	2 891 799.98
L51	77 655.43	2 891	897.64	R51	77 209.66	2 891 775.79

Vel	14	Van	19	P826/14
Sheet		of		

PADRESERWE KOÖRDINATE / ROAD RESERVE CO-ORDINATES						
LINKERKANT/LEFT HAND SIDE				REGTERKANT/RIGHT HAND SIDE		
	Y	X	WG 29°		Y	X
L52	77 661.64	2 891	765.56	R52	77 194.14	2 891 713.46
L53	77 653.35	2 891	735.76	R53	77 176.31	2 891 686.81
L54	77 636.24	2 891	662.12	R54	77 172.80	2 891 575.98
L55	77 633.19	2 891	642.36	R55	77 173.49	2 891 561.75
L56	77 659.83	2 891	643.82	R56	77 159.90	2 891 518.67
L57	77 701.28	2 891	646.10	R57	77 118.09	2 891 470.50
L58	77 713.34	2 891	646.80	R58	76 945.96	2 891 324.75
L59	77 687.41	2 891	553.69	R59	76 842.69	2 891 237.25
L60	77 676.03	2 891	513.03	R60	76 591.28	2 891 048.70
L61	77 655.83	2 891	515.22	R61	76 507.11	2 890 958.24
L62	77 619.32	2 891	519.18	R62	76 498.09	2 890 943.54
L63	77 593.91	2 891	521.94	R63	76 480.12	2 890 914.25
L64	77 547.03	2 891	527.02	R64	76 443.48	2 890 854.53
L65	77 483.47	2 891	495.66	R65	76 399.66	2 890 752.03
L66	77 239.02	2 891	375.04	R66	76 387.26	2 890 670.99
L67	77 125.91	2 891	284.34	R67	76 286.13	2 889 991.56
L68	76 771.43	2 891	091.92	R68	76 255.90	2 889 824.21
L69	76 667.08	2 891	025.99	R69	76 224.24	2 889 700.77
L70	76 628.81	2 890	993.18	R70	76 196.32	2 889 608.10
L71	76 628.17	2 890	992.59	R71	76 161.43	2 889 518.41
L72	76 607.63	2 890	973.58	R72	76 116.02	2 889 422.46
L73	76 606.98	2 890	972.98	R73	76 075.18	2 889 354.21
L74	76 563.59	2 890	922.71	R74	76 067.26	2 889 354.82
L75	76 563.01	2 890	922.04	R75	76 056.89	2 889 363.96
L76	76 553.46	2 890	908.36	R76	76 027.94	2 889 331.04
L77	76 532.76	2 890	878.72	R77	76 043.02	2 889 317.07
L78	76 516.66	2 890	852.93	R78	75 917.99	2 889 084.02
L79	76 489.06	2 890	799.95	R79	75 872.60	2 889 017.03
L80	76 478.91	2 890	775.37	R80	75 818.99	2 888 947.98
L81	76 477.40	2 890	771.72	R81	75 756.98	2 888 875.98
L82	76 467.12	2 890	743.27	R82	75 684.02	2 888 811.99
L83	76 458.84	2 890	714.13	R83	75 606.18	2 888 750.84
L84	76 450.52	2 890	676.58	R84	75 525.92	2 888 695.87
L85	76 446.90	2 890	654.22	R85	75 437.24	2 888 644.19
L86	76 415.88	2 890	444.13	R86	75 347.00	2 888 595.01
L87	76 401.69	2 890	354.02	R87	75 178.01	2 888 520.98
L88	76 271.55	2 889	487.46	R88	75 041.48	2 888 469.40
L89	76 263.21	2 889	483.71	R89	74 963.56	2 888 440.15
L90	76 209.90	2 889	344.70	R90	74 637.68	2 888 317.16
L91	76 175.19	2 889	270.96	R91	74 578.72	2 888 294.96
L92	76 198.28	2 889	256.05	R92	74 554.96	2 888 285.97
L93	75 923.97	2 888	940.05	R93	74 479.58	2 888 253.37
L94	75 794.80	2 888	813.38	R94	74 473.72	2 888 250.45
L95	75 480.25	2 888	570.43	R95	74 465.92	2 888 246.57
L96	75 200.00	2 888	464.00	R96	74 405.90	2 888 218.27
L97	75 089.26	2 888	422.97	R97	74 389.92	2 888 211.32
L98	74 972.20	2 888	379.61	R98	74 311.92	2 888 169.31
L99	74 745.33	2 888	294.88	R99	74 260.45	2 888 140.73
L100	74 670.56	2 888	259.85	R100	74 235.33	2 888 125.53
L101	74 615.04	2 888	245.14	R101	74 190.14	2 888 098.19
L102	74 592.66	2 888	236.28	R102	74 160.41	2 888 079.27

Vel	15	Van	19	P826/14
Sheet		of		

PADRESERWE KOÖRDINATE / ROAD RESERVE CO-ORDINATES							
LINKERKANT/LEFT HAND SIDE				REGTERKANT/RIGHT HAND SIDE			
	Y	X	WG 29°		Y	X	
L103	74 577.79	2 888	230.66	R103	74 121.07	2 888	053.73
L104	74 504.22	2 888	198.85	R104	74 087.64	2 888	030.25
L105	74 489.57	2 888	191.53	R105	74 053.77	2 888	006.68
L106	74 481.50	2 888	187.69	R106	74 016.14	2 887	979.63
L107	74 431.74	2 888	164.61	R107	73 944.87	2 887	928.40
L108	74 360.45	2 888	127.99	R108	73 873.71	2 887	877.13
L109	74 347.19	2 888	120.61	R109	73 865.98	2 887	871.57
L110	74 290.40	2 888	089.00	R110	73 794.80	2 887	820.28
L111	74 270.47	2 888	077.01	R111	73 723.64	2 887	768.98
L112	74 221.78	2 888	047.72	R112	73 652.13	2 887	718.30
L113	74 195.56	2 888	030.73	R113	73 580.55	2 887	667.57
L114	74 154.46	2 888	004.09	R114	73 510.44	2 887	614.82
L115	74 122.62	2 887	981.94	R115	73 442.48	2 887	559.03
L116	74 088.66	2 887	958.30	R116	73 375.35	2 887	501.74
L117	74 051.19	2 887	931.29	R117	73 307.92	2 887	445.16
L118	73 908.83	2 887	828.67	R118	73 240.52	2 887	388.60
L119	73 901.09	2 887	823.09	R119	73 172.04	2 887	333.61
L120	73 829.92	2 887	771.79	R120	73 150.66	2 887	316.43
L121	73 758.76	2 887	720.49	R121	73 150.45	2 887	315.63
L122	73 687.66	2 887	669.24	R122	73 133.13	2 887	247.52
L123	73 616.53	2 887	617.95	R123	73 112.98	2 887	231.46
L124	73 549.90	2 887	560.39	R124	73 086.96	2 887	226.64
L125	73 488.68	2 887	495.26	R125	73 055.44	2 887	224.39
L126	73 430.03	2 887	426.23	R126	73 035.35	2 887	222.96
L127	73 371.54	2 887	357.38	R127	73 030.93	2 887	229.21
L128	73 322.82	2 887	300.04	R128	72 969.76	2 887	190.43
L129	73 318.42	2 887	281.17	R129	72 957.52	2 887	180.97
L130	73 309.33	2 887	244.76	R130	72 950.56	2 887	175.58
L131	73 321.22	2 887	229.78	R131	72 914.44	2 887	147.64
L132	73 355.18	2 887	230.47	R132	72 915.61	2 887	145.82
L133	73 410.96	2 887	231.94	R133	72 923.77	2 887	133.19
L134	73 449.70	2 887	249.55	R134	72 977.90	2 887	172.32
L135	73 450.78	2 887	248.06	R135	72 980.68	2 887	173.44
L136	73 487.68	2 887	274.75	R136	73 017.27	2 887	188.25
L137	73 497.19	2 887	262.20	R137	73 060.52	2 887	188.78
L138	73 508.82	2 887	246.85	R138	73 062.67	2 887	188.81
L139	73 473.93	2 887	221.53	R139	73 102.69	2 887	184.17
L140	73 455.72	2 887	214.87	R140	73 118.46	2 887	162.09
L141	73 445.61	2 887	211.18	R141	73 109.93	2 887	120.51
L142	73 417.23	2 887	204.34	R142	73 089.15	2 887	019.09
L143	73 376.89	2 887	194.62	R143	73 068.40	2 886	917.80
L144	73 375.30	2 887	194.24	R144	73 066.50	2 886	908.76
L145	73 318.41	2 887	185.84	R145	73 066.33	2 886	907.76
L146	73 305.73	2 887	175.23	R146	73 064.13	2 886	894.53
L147	73 295.56	2 887	166.72	R147	73 045.74	2 886	807.97
L148	73 293.50	2 887	161.59	R148	73 044.52	2 886	803.56
L149	73 278.00	2 887	123.05	R149	73 010.21	2 886	679.68
L150	73 222.48	2 887	052.34	R150	72 958.40	2 886	492.63
L151	73 191.06	2 887	008.41	R151	72 923.70	2 886	367.31
L152	73 185.05	2 887	000.00	R152	72 900.75	2 886	284.49
L153	73 179.50	2 886	989.41	R153	72 898.01	2 886	275.30

Vel	16	Van	19	P826/14
Sheet		of		

PADRESERWE KOÖRDINATE / ROAD RESERVE CO-ORDINATES							
LINKERKANT/LEFT HAND SIDE				REGTERKANT/RIGHT HAND SIDE			
	Y	X	WG 29°		Y	X	
L154	73 169.68	2 886	970.68	R154	72 894.38	2 886	263.14
L155	73 165.16	2 886	967.46	R155	72 880.47	2 886	177.04
L156	73 157.60	2 886	947.63	R156	72 857.18	2 886	058.68
L157	73 141.18	2 886	904.86	R157	72 853.42	2 886	039.57
L158	73 127.37	2 886	860.39	R158	72 835.90	2 885	900.66
L159	73 090.23	2 886	740.36	R159	72 807.52	2 885	724.50
L160	73 054.89	2 886	617.89	R160	72 738.65	2 885	297.38
L161	73 002.92	2 886	431.17	R161	72 719.52	2 885	212.55
L162	72 968.19	2 886	305.90	R162	72 696.56	2 885	137.94
L163	72 959.35	2 886	275.06	R163	72 631.88	2 884	974.96
L164	72 956.90	2 886	265.83	R164	72 548.21	2 884	775.84
L165	72 953.67	2 886	253.64	R165	72 519.93	2 884	706.41
L166	72 955.28	2 886	253.39	R166	72 425.62	2 884	497.76
L167	72 940.49	2 886	150.58	R167	72 376.59	2 884	398.97
L168	72 924.30	2 886	047.85	R168	72 342.94	2 884	337.15
L169	72 921.56	2 886	028.26	R169	72 278.05	2 884	222.10
L170	72 888.88	2 885	851.60	R170	72 239.13	2 884	192.43
L171	72 875.65	2 885	769.52	R171	72 214.28	2 884	197.82
L172	72 873.50	2 885	754.33	R172	72 137.39	2 884	344.12
L173	72 776.40	2 885	155.79	R173	72 112.52	2 884	331.06
L174	72 739.46	2 885	025.33	R174	72 084.51	2 884	316.33
L175	72 665.43	2 884	851.94	R175	72 148.50	2 884	194.57
L176	72 651.51	2 884	814.28	R176	72 165.92	2 884	161.41
L177	72 644.61	2 884	795.60	R177	72 144.80	2 884	119.93
L178	72 619.27	2 884	736.26	R178	72 126.22	2 884	083.35
L179	72 593.93	2 884	676.95	R179	72 110.01	2 883	903.91
L180	72 581.08	2 884	648.46	R180	72 095.12	2 883	790.61
L181	72 533.89	2 884	543.86	R181	72 050.19	2 883	646.70
L182	72 486.19	2 884	406.54	R182	71 937.06	2 883	343.44
L183	72 481.69	2 884	394.43	R183	71 908.53	2 883	243.06
L184	72 442.17	2 884	265.15	R184	71 893.08	2 883	163.68
L185	72 437.51	2 884	240.91	R185	71 884.30	2 883	083.49
L186	72 432.05	2 884	171.60	R186	71 882.56	2 883	002.85
L187	72 422.76	2 883	945.11	R187	71 887.47	2 882	922.45
L188	72 407.46	2 883	907.99	R188	71 901.84	2 882	842.58
L189	72 389.50	2 883	864.02	R189	71 920.99	2 882	758.20
L190	72 418.09	2 883	809.61	R190	71 945.20	2 882	688.29
L191	72 400.46	2 883	800.35	R191	71 976.47	2 882	613.80
L192	72 365.19	2 883	781.90	R192	72 013.86	2 882	542.57
L193	72 333.84	2 883	841.33	R193	72 057.20	2 882	474.87
L194	72 214.63	2 883	731.63	R194	72 266.94	2 882	175.63
L195	72 111.28	2 883	537.19	R195	72 533.69	2 881	794.40
L196	72 024.75	2 883	341.70	R196	72 581.99	2 881	722.75
L197	71 987.17	2 883	224.06	R197	72 656.69	2 881	611.95
L198	71 973.07	2 883	151.57	R198	72 706.36	2 881	547.13
L199	71 965.14	2 883	078.18	R199	72 793.36	2 881	421.83
L200	71 963.45	2 883	004.42	R200	73 023.52	2 881	090.31
L201	71 968.01	2 882	930.60	R201	73 069.02	2 881	021.83
L202	71 975.72	2 882	857.12	R202	73 113.91	2 880	945.39
L203	71 992.61	2 882	785.03	R203	73 165.14	2 880	848.31
L204	72 015.50	2 882	714.52	R204	73 192.89	2 880	765.96

Vel	17	Van	19	P826/14
Sheet		of		

PADRESERWE KOÖRDINATE / ROAD RESERVE CO-ORDINATES						
LINKERKANT/LEFT HAND SIDE				REGTERKANT/RIGHT HAND SIDE		
	Y	X	WG 29°		Y	X
L205	72 078.52	2 882	580.68	R205	73 208.79	2 880 661.66
L206	72 118.32	2 882	518.17	R206	73 220.08	2 880 603.07
L207	72 328.31	2 882	218.60	R207	73 261.83	2 880 478.10
L208	72 618.25	2 881	804.25	R208	73 251.89	2 880 458.87
L209	72 638.28	2 881	777.18	R209	73 144.47	2 880 422.10
L210	72 725.11	2 881	659.82	R210	73 101.06	2 880 405.60
L211	72 732.71	2 881	640.64	R211	73 121.70	2 880 345.17
L212	73 030.20	2 881	215.33	R212	73 463.75	2 880 464.87
L213	73 239.94	2 880	915.65	R213	73 637.62	2 880 211.56
L214	73 286.06	2 880	849.92	R214	73 697.39	2 880 131.01
L215	73 322.93	2 880	802.44	R215	73 734.81	2 880 073.07
L216	73 496.50	2 880	548.96	R216	73 767.41	2 880 012.33
L217	73 761.38	2 880	664.50	R217	73 795.02	2 879 949.74
L218	73 809.87	2 880	687.42	R218	73 817.88	2 879 884.41
L219	73 837.61	2 880	633.08	R219	73 997.34	2 879 297.37
L220	73 784.08	2 880	605.81	R220	74 064.43	2 879 077.93
L221	73 697.45	2 880	566.78	R221	74 064.81	2 879 076.70
L222	73 690.04	2 880	547.02	R222	74 292.75	2 878 628.67
L223	73 746.76	2 880	425.06	R223	74 457.47	2 878 304.92
L224	73 761.86	2 880	384.76	R224	74 243.54	2 878 113.41
L225	73 770.22	2 880	342.62	R225	74 248.79	2 878 107.39
L226	73 780.44	2 880	223.75	R226	74 260.18	2 878 094.32
L227	73 789.01	2 880	177.83	R227	74 468.22	2 878 270.97
L228	73 803.86	2 880	133.56	R228	74 479.66	2 878 279.50
L229	73 877.82	2 879	964.66	R229	74 680.65	2 877 892.98
L230	73 919.71	2 879	813.33	R230	74 976.08	2 877 325.31
L231	73 937.31	2 879	749.77	R231	75 004.42	2 877 265.03
L232	74 061.11	2 879	344.76	R232	75 028.31	2 877 202.89
L233	74 102.72	2 879	208.89	R233	75 047.32	2 877 138.95
L234	74 119.73	2 879	157.60	R234	75 061.42	2 877 073.74
L235	74 139.00	2 879	107.14	R235	75 070.68	2 877 007.58
L236	74 160.59	2 879	057.62	R236	75 074.84	2 876 941.15
L237	74 184.42	2 879	009.13	R237	75 073.64	2 876 874.37
L238	74 465.77	2 878	468.35	R238	75 067.62	2 876 807.77
L239	74 515.54	2 878	372.69	R239	75 028.12	2 876 503.26
L240	74 721.76	2 878	443.37	R240	74 993.09	2 876 233.64
L241	74 745.48	2 878	451.42	R241	74 942.19	2 875 842.25
L242	74 751.63	2 878	439.24	R242	74 932.08	2 875 764.04
L243	74 698.67	2 878	419.21	R243	74 921.80	2 875 683.62
L244	74 546.03	2 878	314.19	R244	74 916.84	2 875 645.53
L245	74 670.52	2 878	074.79	R245	74 914.68	2 875 629.09
L246	74 746.71	2 877	927.55	R246	74 901.73	2 875 529.31
L247	75 042.20	2 877	360.18	R247	74 881.96	2 875 378.07
L248	75 073.18	2 877	294.73	R248	74 862.46	2 875 284.22
L249	75 099.13	2 877	227.10	R249	74 828.90	2 875 186.32
L250	75 119.78	2 877	157.64	R250	74 811.82	2 875 147.91
L251	75 135.06	2 877	086.89	R251	74 763.95	2 875 070.00
L252	75 144.99	2 877	015.21	R252	74 759.13	2 875 062.13
L253	75 149.41	2 876	942.93	R253	74 690.54	2 874 983.48
L254	75 148.42	2 876	870.27	R254	74 632.34	2 874 932.89
L255	75 141.75	2 876	798.40	R255	74 539.36	2 874 860.90

Vel	18	Van	19	P826/14
Sheet		of		

PADRESERWE KOÖRDINATE / ROAD RESERVE CO-ORDINATES					
LINKERKANT/LEFT HAND SIDE			REGTERKANT/RIGHT HAND SIDE		
	Y	X	WG 29°		
L256	75 126.14	2 876 677.08		R256	74 496.62 2 874 830.24
L257	75 081.62	2 876 334.35		R257	74 447.49 2 874 790.01
L258	75 024.49	2 875 893.23		R258	74 407.43 2 874 734.77
L259	75 013.40	2 875 807.57		R259	74 380.60 2 874 672.26
L260	74 996.18	2 875 674.60		R260	74 370.29 2 874 599.73
L261	74 990.99	2 875 634.45		R261	74 377.46 2 874 527.65
L262	74 985.57	2 875 592.64		R262	74 411.09 2 874 456.51
L263	74 917.55	2 875 068.74		R263	74 462.40 2 874 390.97
L264	74 890.86	2 874 863.59		R264	74 513.78 2 874 346.46
L265	74 879.78	2 874 686.33			
L266	74 876.36	2 874 640.82			
L267	74 876.03	2 874 601.51			
L268	74 882.45	2 874 561.27			
L269	74 895.23	2 874 523.25			
L270	74 966.16	2 874 389.26			
L271	74 978.75	2 874 341.45			
L272	74 983.96	2 874 341.63			

Vel	19	Van	19	P826/14
Sheet		of		

Printed by and obtainable from the Government Printer, Bosman Street, Private Bag X85, Pretoria, 0001  
Publications: Tel: (012) 748 6052, 748 6053, 748 6058  
Advertisements: Tel: (012) 748 6205, 748 6208, 748 6209, 748 6210, 748 6211  
Subscriptions: Tel: (012) 748 6054, 748 6055, 748 6057