



Government Gazette Staatskoerant

REPUBLIC OF SOUTH AFRICA
REPUBLIEK VAN SUID-AFRIKA

Vol. 601

Pretoria, 1 July
Julie 2015

No. 38938

N.B. The Government Printing Works will not be held responsible for the quality of "Hard Copies" or "Electronic Files" submitted for publication purposes



AIDS HELPLINE: 0800-0123-22 Prevention is the cure

DISCLAIMER:

Government Printing Works reserves the right to apply the 25% discount to all Legal and Liquor notices that comply with the business rules for notice submissions for publication in gazettes.

National, Provincial, Road Carrier Permits and Tender notices will pay the price as published in the Government Gazettes.

For any information, please contact the eGazette Contact Centre on 012-748 6200 or email info.egazette@gpw.gov.za

CONTENTS**INHOUD**

<i>No.</i>	<i>Page No.</i>	<i>Gazette No.</i>	<i>No.</i>	<i>Bladsy No.</i>	<i>Koerant No.</i>
GOVERNMENT NOTICE			GOEWERMENTSKENNISGEWING		
Transport, Department of			Vervoer, Departement van		
<i>Government Notice</i>			<i>Goewermentskennisgewing</i>		
557		South African National Roads Agency Limited and National Roads Act (7/1998): Declaration amendment of National Road D797 Section 1	3	38938	
			557		Wet op die Suid-Afrikaanse Nasionale Padagentskap Beperk en op Nasionale Paaie Wet (7/1998): Verklaring wysiging van Nasionale Pad D797 Seksie 1
			4	38938	

GOVERNMENT NOTICE

DEPARTMENT OF TRANSPORT

No. 557

1 July 2015

THE SOUTH AFRICAN NATIONAL ROADS AGENCY SOC LIMITED

Registration No: 1998/009584/30

DECLARATION AMENDMENT OF NATIONAL ROAD D797 SECTION 1

AMENDMENT OF DECLARATION NO. 784 OF 2000.

By virtue of section 40(1)(b) of the South African National Roads Agency Limited and National Roads Act, 1998 (Act No. 7 of 1998) I hereby amend Declaration no. 784 of 2000 by substituting paragraph F of the schedule thereof, with the subjoined sheets 1 to 7 of Plan P714/08

(National Route D797 Section 1: One Tree Hill to Tonga)



MINISTER OF TRANSPORT

GOEWERMENSKENNISGEWING

DEPARTEMENT VAN VERVOER

No. 557

1 Julie 2015

DIE SUID-AFRIKAANSE NASIONALE PADAGENTSKAP MSB BEPERK

Registrasie No: 1998/009584/30

VERKLARING WYSIGING VAN NASIONALE PAD D797 SEKSIE 1

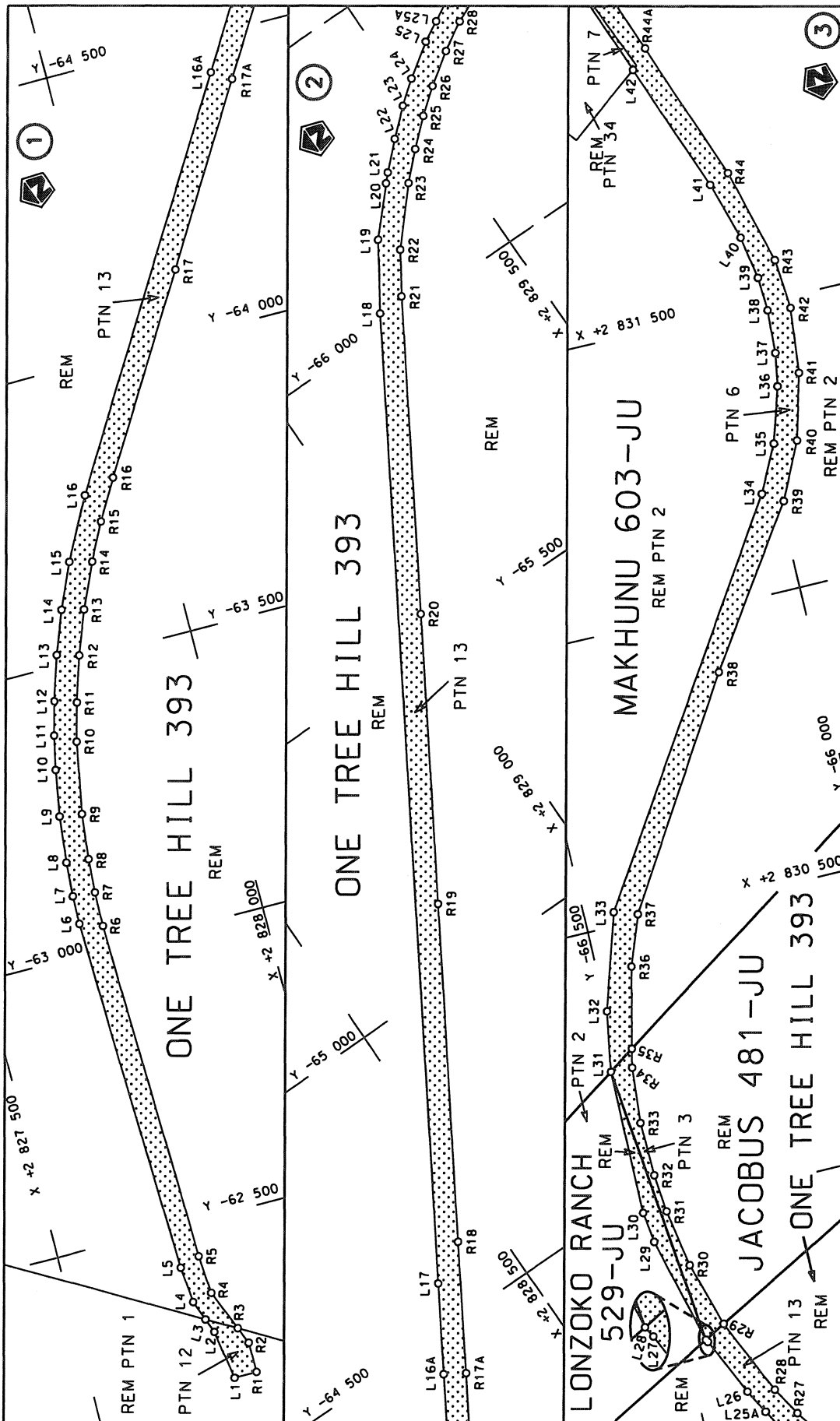
WYSIGING VAN VERKLARING NO. 784 VAN 2000.

Kragtens artikel 40 (1)(b) van die Suid Afrikaanse Nasionale Padagentskap Beperk en Nasionale Paaie Wet, 1998 (Wet No. 7 van 1998), wysig ek hiermee Verklaring no. 784 van 2000, deur paragraaf F van die skedule daarvan, te vervang met bygaande velle 1 tot 7 van Plan P714/08.

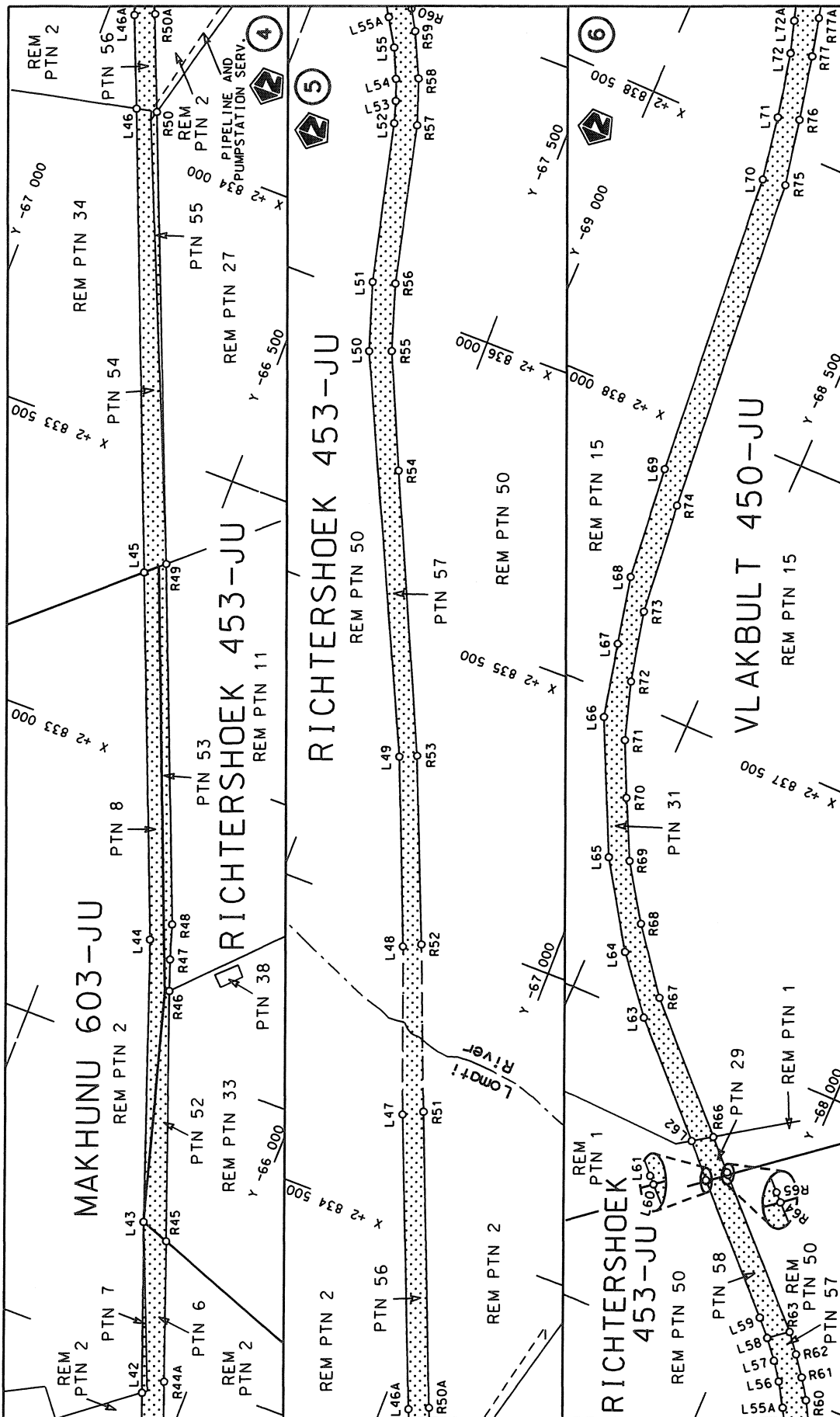
(Nasionale Pad D797 Seksie 1: One Tree Hill to Tonga)



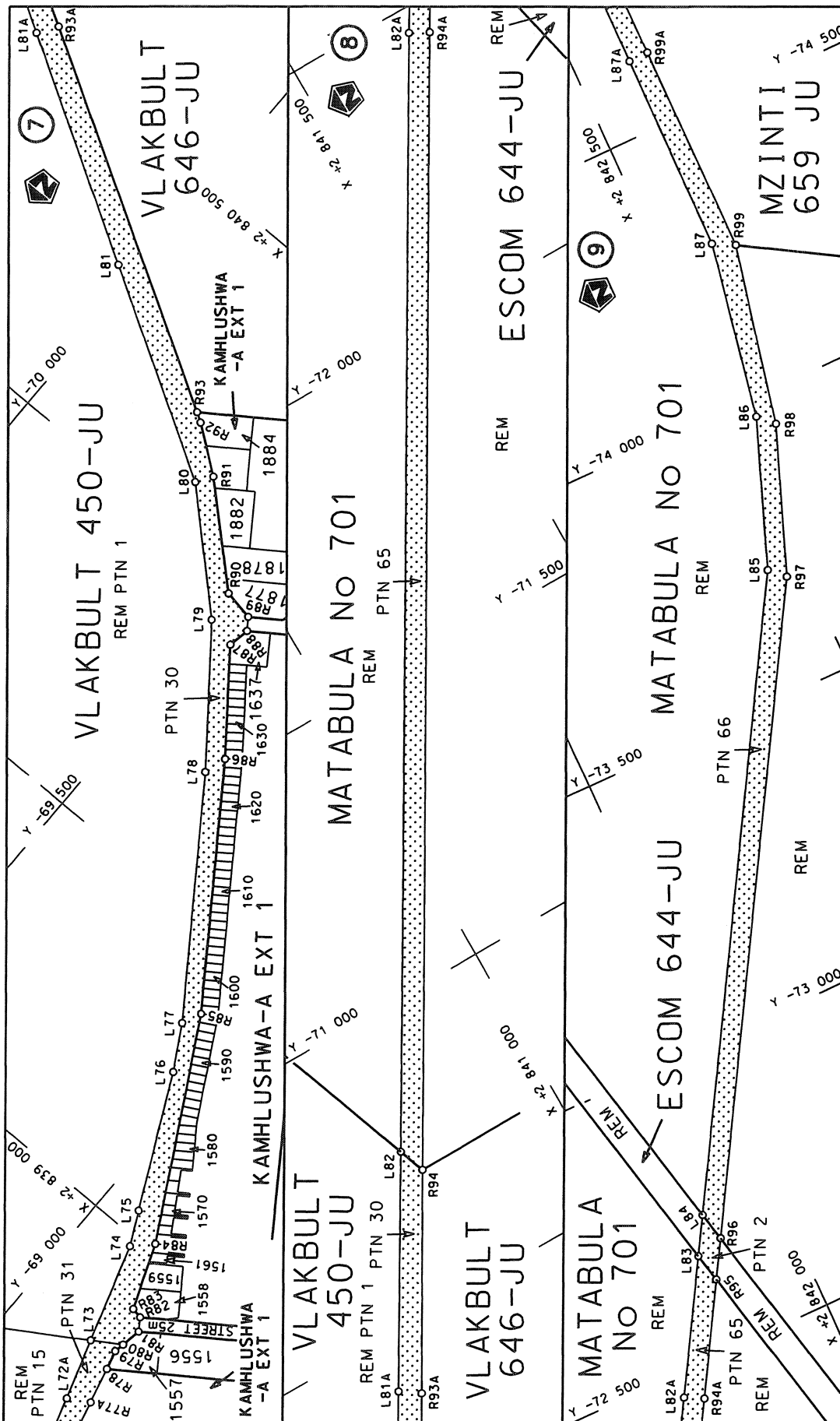
MINISTER VAN VERVOER

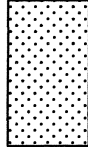


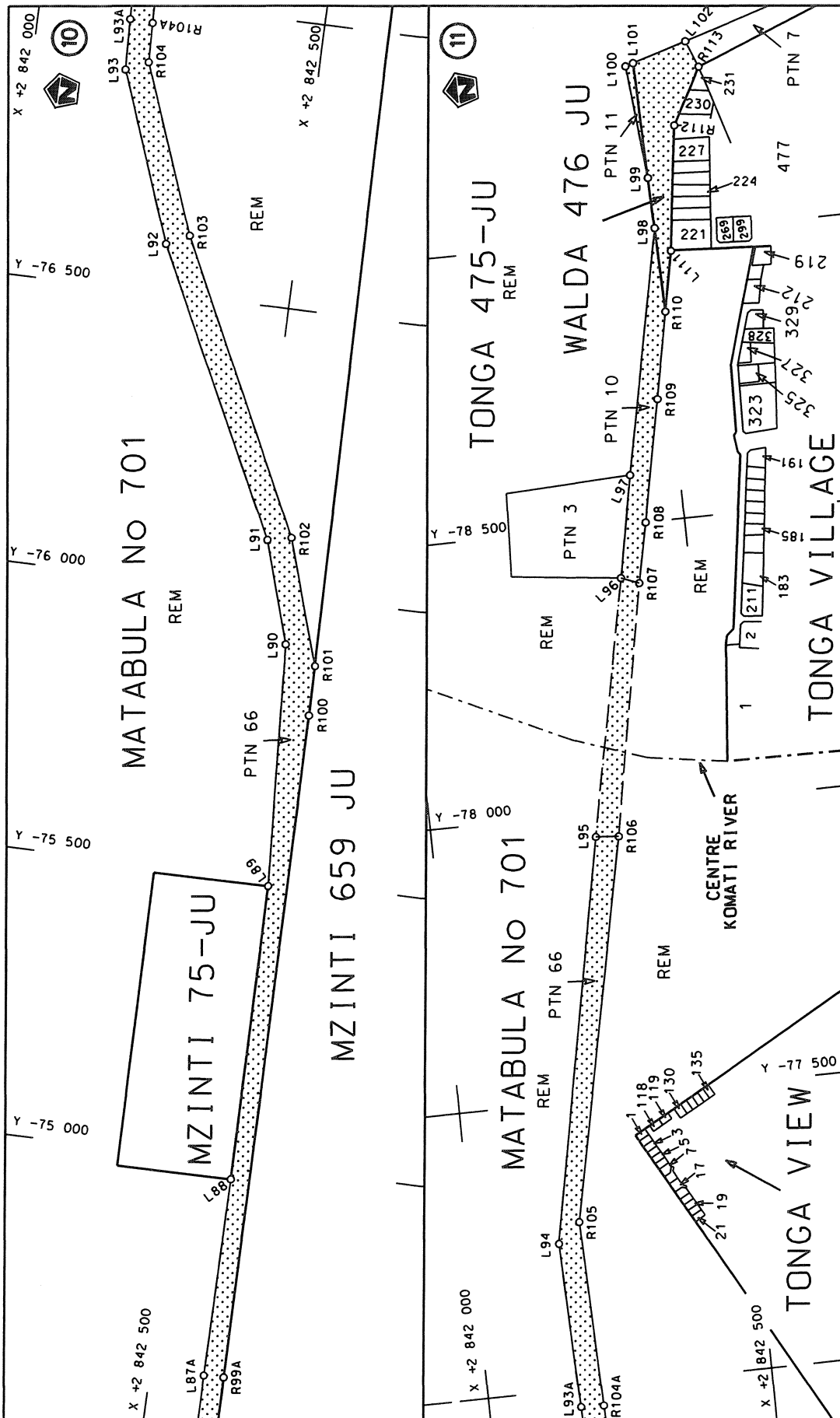
<p>Die Suid Afrikaanse Nasionale Padagentskap Beperk The South African National Roads Agency Limited</p>	<p>Die figuur getoon The figure shown</p>	<p>steldie padreserwe voor van 'n gedeelte represents the road reserve of a portion van Nasionale Roete D797 of National Route D797 Seksie Section</p>	<p>Vel Sheet 1 van of 7 Plan P714/08</p>
--	---	--	--



<p>Die Suid Afrikaanse Nasionale Padagentskap Beperk The South African National Roads Agency Limited</p>	<p>Die figuur getoon The figure shown</p>	<p>steldie padreserwe voor van 'n gedeelte represents the road reserve of a portion van Nasionale Roete D797 Sektie of National Route D797 Section</p>	<p>Vel Sheet 2 of 7 Plan P714/08</p>
--	---	--	--



Die Suid Afrikaanse Nasionale Padagentskap Beperk The South African National Roads Agency Limited	Die figuur getoon The figure shown		steldie padreserwe voor van 'n gedeelte represents the road reserve of a portion van Nasionale Roete D797 of National Route Section	Vel Sheet 3 of 7
				Plan P714/08



<p>Die Suid Afrikaanse Nasionale Padagentskap Beperk The South African National Roads Agency Limited</p>	<p>Die figuur getoon The figure shown</p> <p>steldie padreserwe voor van 'n gedeelte represents the road reserve of a portion van Nasionale Roete D797 of National Route</p> <p>1</p>	<p>Vel Sheet 4 of 7</p> <p>Plan P714/08</p>
--	---	---

PADRESERWE KOÖRDINATE / ROAD RESERVE CO-ORDINATES						
LINKERKANT/LEFT HAND SIDE			REGTERKANT/RIGHT HAND SIDE			
	Y	X	WG 31°		Y	X
L1	-62 218.19	2 827	746.58	R1	-62 218.39	2 827 785.99
L2	-62 304.99	2 827	732.74	R2	-62 271.19	2 827 785.94
L3	-62 329.88	2 827	723.18	R3	-62 300.47	2 827 773.91
L4	-62 364.72	2 827	709.80	R4	-62 372.23	2 827 744.45
L5	-62 428.04	2 827	703.87	R5	-62 439.50	2 827 739.57
L6	-63 053.85	2 827	682.79	R6	-63 039.91	2 827 722.07
L7	-63 103.40	2 827	684.02	R7	-63 100.05	2 827 723.29
L8	-63 163.40	2 827	688.00	R8	-63 159.15	2 827 726.93
L9	-63 244.42	2 827	696.95	R9	-63 238.29	2 827 735.75
L10	-63 324.89	2 827	710.80	R10	-63 362.86	2 827 758.54
L11	-63 383.81	2 827	723.29	R11	-63 429.31	2 827 776.02
L12	-63 441.90	2 827	738.73	R12	-63 507.91	2 827 800.85
L13	-63 518.79	2 827	763.06	R13	-63 583.44	2 827 829.13
L14	-63 593.20	2 827	791.25	R14	-63 660.97	2 827 864.11
L15	-63 670.72	2 827	825.13	R15	-63 725.14	2 827 896.96
L16	-63 776.57	2 827	880.89	R16	-63 794.16	2 827 937.15
L17	-64 573.17	2 828	362.73	R17	-64 118.89	2 828 133.61
L18	-66 025.57	2 829	242.59	R18	-64 612.82	2 828 432.40
L19	-66 133.98	2 829	313.21	R19	-65 118.18	2 828 738.90
L20	-66 207.15	2 829	380.88	R20	-65 552.52	2 829 002.16
L21	-66 220.91	2 829	394.04	R21	-66 028.94	2 829 290.53
L22	-66 262.46	2 829	437.41	R22	-66 097.35	2 829 335.34
L23	-66 302.06	2 829	482.12	R23	-66 184.82	2 829 413.60
L24	-66 332.78	2 829	521.39	R24	-66 227.37	2 829 456.75
L25	-66 371.63	2 829	578.46	R25	-66 267.16	2 829 501.21
L26	-66 413.43	2 829	655.24	R26	-66 301.02	2 829 544.35
L27	-66 459.99	2 829	755.40	R27	-66 338.07	2 829 598.11
L28	-66 462.67	2 829	760.10	R28	-66 366.76	2 829 647.02
L29	-66 511.40	2 829	947.32	R29	-66 425.99	2 829 779.77
L30	-66 519.00	2 830	001.22	R30	-66 460.06	2 829 893.23
L31	-66 516.89	2 830	253.99	R31	-66 477.88	2 829 994.15
L32	-66 499.23	2 830	358.41	R32	-66 484.39	2 830 060.44
L33	-66 447.31	2 830	523.71	R33	-66 486.87	2 830 154.68
L34	-66 025.65	2 831	174.98	R34	-66 478.99	2 830 252.17
L35	-65 985.05	2 831	255.33	R35	-66 471.53	2 830 284.22
L36	-65 955.48	2 831	351.46	R36	-66 438.94	2 830 424.04
L37	-65 945.63	2 831	409.10	R37	-66 407.00	2 830 510.41
L38	-65 941.32	2 831	484.85	R38	-66 170.27	2 830 888.68
L39	-65 944.42	2 831	544.65	R39	-65 992.04	2 831 153.58
L40	-65 956.96	2 831	619.78	R40	-65 944.92	2 831 251.24
L41	-65 986.88	2 831	721.90	R41	-65 914.07	2 831 365.73
L42	-66 072.27	2 831	949.16	R42	-65 901.90	2 831 479.69
L43	-66 177.29	2 832	228.65	R43	-65 908.62	2 831 567.50
L44	-66 345.34	2 832	694.07	R44	-65 952.03	2 831 734.71
L45	-66 587.97	2 833	295.23	R45	-66 128.44	2 832 210.99
L46	-66 891.91	2 834	050.62	R46	-66 281.41	2 832 621.62
L47	-67 150.08	2 834	678.80	R47	-66 300.25	2 832 673.68
L48	-67 255.38	2 834	953.90	R48	-66 318.69	2 832 732.77
L49	-67 381.39	2 835	263.94	R49	-66 557.10	2 833 322.90
L50	-67 687.38	2 835	912.53	R50	-66 856.92	2 834 057.78
L51	-67 725.30	2 836	028.10	R51	-67 117.31	2 834 696.02

Vel	5	Van	7	P714/08
Sheet		of		

PADRESERWE KOÖRDINATE / ROAD RESERVE CO-ORDINATES						
LINKERKANT/LEFT HAND SIDE			REGTERKANT/RIGHT HAND SIDE			
	Y	X	WG 31°		Y	X
L52	-67 789.77	2 836	300.95	R52	-67 226.26	2 834 968.36
L53	-67 801.22	2 836	338.23	R53	-67 352.93	2 835 276.29
L54	-67 814.81	2 836	374.45	R54	-67 564.08	2 835 734.88
L55	-67 837.25	2 836	424.62	R55	-67 650.39	2 835 926.92
L56	-67 889.71	2 836	510.51	R56	-67 687.15	2 836 039.53
L57	-67 912.12	2 836	540.65	R57	-67 751.02	2 836 311.63
L58	-67 938.74	2 836	572.24	R58	-67 778.07	2 836 388.72
L59	-67 964.93	2 836	599.77	R59	-67 813.45	2 836 464.13
L60	-68 147.32	2 836	781.35	R60	-67 833.77	2 836 499.11
L61	-68 148.77	2 836	782.79	R61	-67 856.17	2 836 533.11
L62	-68 199.62	2 836	835.31	R62	-67 881.19	2 836 566.08
L63	-68 364.27	2 836	999.32	R63	-67 907.37	2 836 597.40
L64	-68 440.86	2 837	091.73	R64	-68 116.38	2 836 806.30
L65	-68 533.67	2 837	233.28	R65	-68 119.75	2 836 809.67
L66	-68 640.37	2 837	457.12	R66	-68 167.17	2 836 856.96
L67	-68 670.00	2 837	585.30	R67	-68 352.88	2 837 042.21
L68	-68 696.75	2 837	702.59	R68	-68 434.68	2 837 148.35
L69	-68 717.42	2 837	900.88	R69	-68 497.79	2 837 241.70
L70	-68 761.02	2 838	435.18	R70	-68 547.12	2 837 341.74
L71	-68 780.60	2 838	545.08	R71	-68 590.48	2 837 434.08
L72	-68 804.97	2 838	656.47	R72	-68 622.18	2 837 533.44
L73	-68 855.17	2 838	815.21	R73	-68 650.76	2 837 655.72
L74	-68 908.62	2 838	984.25	R74	-68 671.41	2 837 850.80
L75	-68 936.86	2 839	041.55	R75	-68 721.06	2 838 441.44
L76	-69 046.80	2 839	264.69	R76	-68 744.56	2 838 556.02
L77	-69 089.96	2 839	340.37	R77	-68 768.78	2 838 666.42
L78	-69 342.31	2 839	703.60	R78	-68 801.26	2 838 794.93
L79	-69 507.02	2 839	915.88	R79	-68 809.99	2 838 828.41
L80	-69 685.29	2 840	082.35	R80	-68 806.88	2 838 845.71
L81	-70 034.35	2 840	286.36	R81	-68 800.57	2 838 880.66
L82	-70 765.88	2 840	715.02	R82	-68 814.81	2 838 901.20
L83	-72 671.57	2 841	831.68	R83	-68 833.56	2 838 904.45
L84	-72 733.71	2 841	868.08	R84	-68 876.77	2 839 015.75
L85	-73 714.78	2 842	442.68	R85	-69 074.44	2 839 374.25
L86	-73 968.20	2 842	537.41	R86	-69 330.57	2 839 743.61
L87	-74 275.48	2 842	592.90	R87	-69 453.25	2 839 903.38
L88	-74 971.18	2 842	596.43	R88	-69 446.50	2 839 940.48
L89	-75 487.96	2 842	594.27	R89	-69 460.82	2 839 960.91
L90	-75 914.33	2 842	570.08	R90	-69 513.75	2 839 970.50
L91	-76 093.09	2 842	514.91	R91	-69 666.78	2 840 110.39
L92	-76 586.35	2 842	274.36	R92	-69 745.31	2 840 168.03
L93	-76 879.47	2 842	165.42	R93	-69 761.75	2 840 178.08
L94	-77 255.37	2 842	152.08	R94	-70 719.74	2 840 731.97
L95	-77 957.26	2 842	289.29	R95	-72 621.37	2 841 843.44
L96	-78 406.74	2 842	379.75	R96	-72 683.62	2 841 879.82
L97	-78 585.17	2 842	414.50	R97	-73 690.24	2 842 468.01
L98	-79 011.35	2 842	501.34	R98	-73 942.14	2 842 562.81
L99	-79 099.56	2 842	499.24	R99	-74 255.77	2 842 630.27
L100	-79 297.62	2 842	480.71	R100	-75 794.71	2 842 626.43
L101	-79 301.78	2 842	494.40	R101	-75 882.61	2 842 625.58
L102	-79 331.34	2 842	591.86	R102	-76 101.87	2 842 556.13

Vel Sheet	6	Van of	7	P714/08
--------------	---	-----------	---	---------

PADRESERWE KOÖRDINATE / ROAD RESERVE CO-ORDINATES			
LINKERKANT/LEFT HAND SIDE		REGTERKANT/RIGHT HAND SIDE	
	WG 31°	Y	X
	103	-76 605.95	2 842 313.78
	104	-76 897.24	2 842 204.13
	105	-77 288.85	2 842 191.76
	106	-77 953.77	2 842 328.89
	107	-78 394.53	2 842 410.59
	108	-78 499.64	2 842 432.32
	109	-78 712.89	2 842 475.20
	110	-78 863.90	2 842 504.87
	111	-78 968.76	2 842 525.44
	112	-79 186.25	2 842 553.77
	113	-79 283.73	2 842 606.33

Vel	7	Van	7	P714/08
Sheet		of		

Printed by and obtainable from the Government Printer, Bosman Street, Private Bag X85, Pretoria, 0001

Publications: Tel: (012) 748 6052, 748 6053, 748 6058

Advertisements: Tel: (012) 748 6205, 748 6208, 748 6209, 748 6210, 748 6211

Subscriptions: Tel: (012) 748 6054, 748 6055, 748 6057

Gedruk deur en verkrygbaar by die Staatsdrukker, Bosmanstraat, Privaatsak X85, Pretoria, 0001

Publikasies: Tel: (012) 748 6052, 748 6053, 748 6058

Advertensies: Tel: (012) 748 6205, 748 6208, 748 6209, 748 6210, 748 6211

Subskripsies: Tel: (012) 748 6054, 748 6055, 748 6057