



Government Gazette Staatskoerant

REPUBLIC OF SOUTH AFRICA
REPUBLIEK VAN SUID-AFRIKA

Vol. 601

Pretoria, 8 July
Julie 2015

No. 38968

N.B. The Government Printing Works will not be held responsible for the quality of "Hard Copies" or "Electronic Files" submitted for publication purposes



AIDS HELPLINE: 0800-0123-22 Prevention is the cure

DISCLAIMER:

Government Printing Works reserves the right to apply the 25% discount to all Legal and Liquor notices that comply with the business rules for notice submissions for publication in gazettes.

National, Provincial, Road Carrier Permits and Tender notices will pay the price as published in the Government Gazettes.

For any information, please contact the eGazette Contact Centre on 012-748 6200 or email info.egazette@gpw.gov.za

CONTENTS**INHOUD**

<i>No.</i>	<i>Page No.</i>	<i>Gazette No.</i>	<i>No.</i>	<i>Bladsy No.</i>	<i>Koerant No.</i>
GOVERNMENT NOTICE			GOEWERMENTSKENNISGEWING		
Transport, Department of			Vervoer, Departement van		
<i>Government Notice</i>			<i>Goewermentskennisgewing</i>		
582		South African National Roads Agency Limited and National Roads Act (7/1998): Declaration amendment of National Road N12 Section 12	3	38968	
			582		Suid-Afrikaanse Nasionale Padagentskap Beperk en Nasionale Paaie Wet (7/1998): Wysiging van verklaring van N12 Seksie 12.....
			4	38968	

GOVERNMENT NOTICE

DEPARTMENT OF TRANSPORT

No. 582

8 July 2015

THE SOUTH AFRICAN NATIONAL ROADS AGENCY SOC LIMITED

Registration No: 1998/009584/30

DECLARATION AMENDMENT OF NATIONAL ROAD N12 SECTION 12

AMENDMENT OF DECLARATION NO. 759 OF 2007.

By virtue of section 40(1)(b) of the South African National Roads Agency Limited and National Roads Act, 1998 (Act No. 7 of 1998) I hereby amend Declaration no. 759 of 2007 by substituting the section from Portion 9 of the Farm Kromellenboog 320 – HO up to Portion 188 of the Farm Klipfontein 344 - HO, with the subjoined sheets 1 to 10 of Plan P868/15.

(National Route N12 Section 12: Christiana - Bloemhof)



MINISTER OF TRANSPORT

GOEWERMENSKENNISGEWING

DEPARTEMENT VAN VERVOER

No. 582

8 Julie 2015

DIE SUID-AFRIKAANSE NASIONALE PADAGENTSKAP MSB BEPERK

Registrasie No: 1998/009584/30

WYSIGING VAN VERKLARING VAN N12 SEKSIE 12

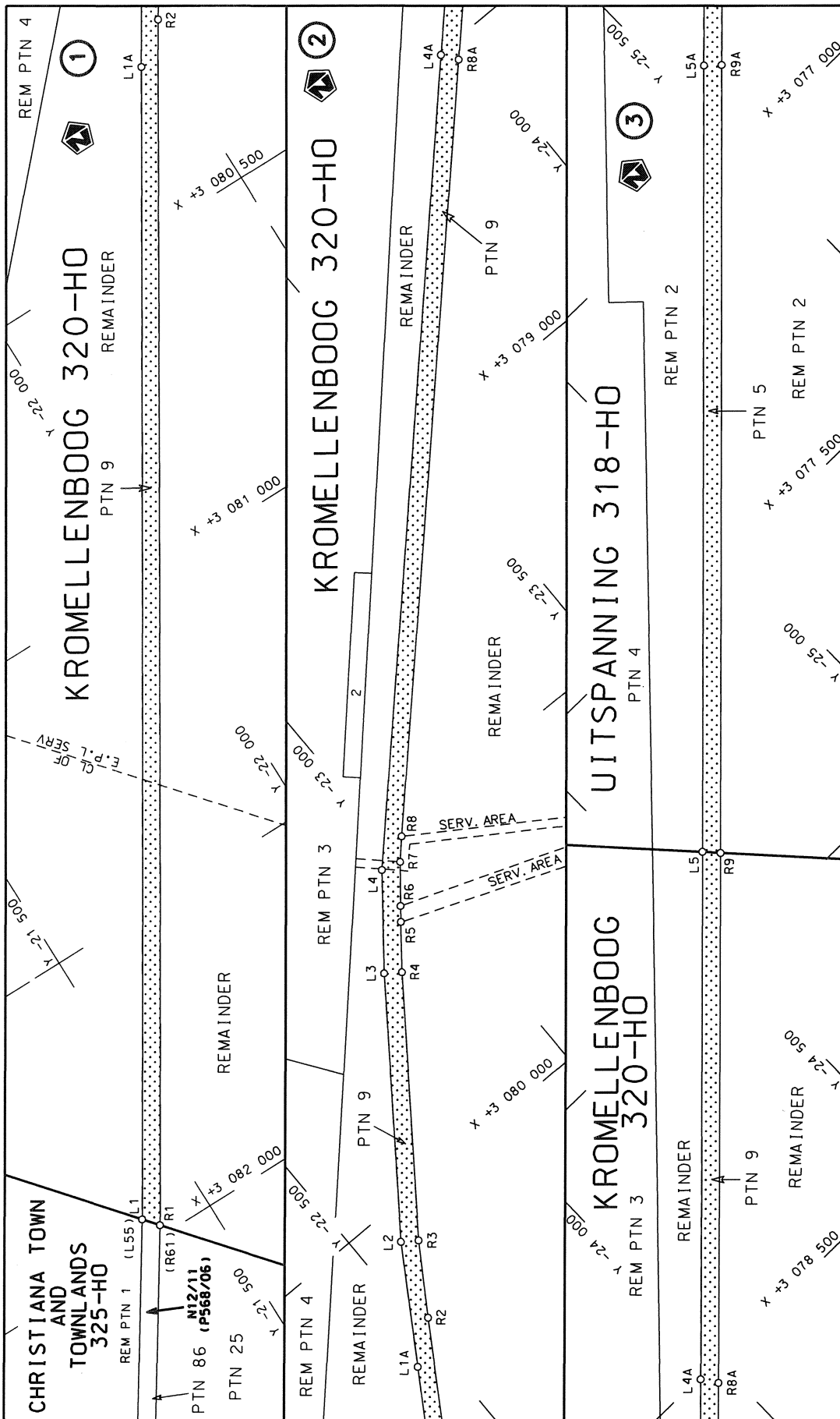
WYSIGING VAN VERKLARING NO. 759 VAN 2007.

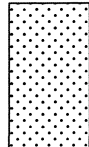
Kragtens artikel 40 (1)(b) van die Suid Afrikaanse Nasionale Padagentskap Beperk en Nasionale Paaie Wet (Wet No. 7 van 1998), wysig ek hiermee Verklaring no. 759 van 2007, deur die gedeelte vanaf Gedeelte 9 van die plaas Kromellenboog 320 – HO tot by Gedeelte 188 van die plaas Klipfontein 344 - HO, te vervang met bygaande velle 1 tot 10 van Plan P868/15.

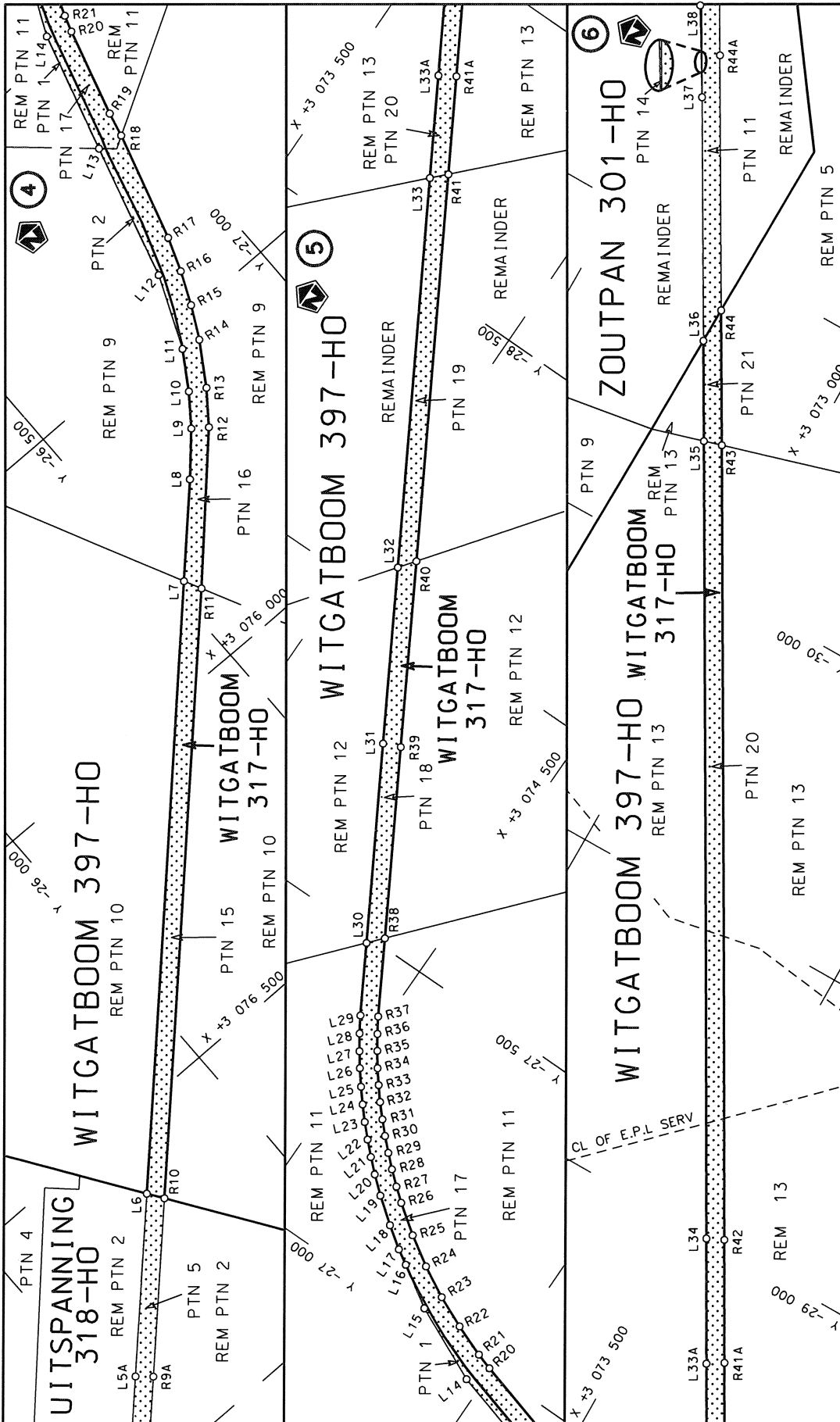
(Nasionale Roete N12 Section 12: Christiana - Bloemhof)

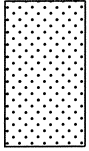


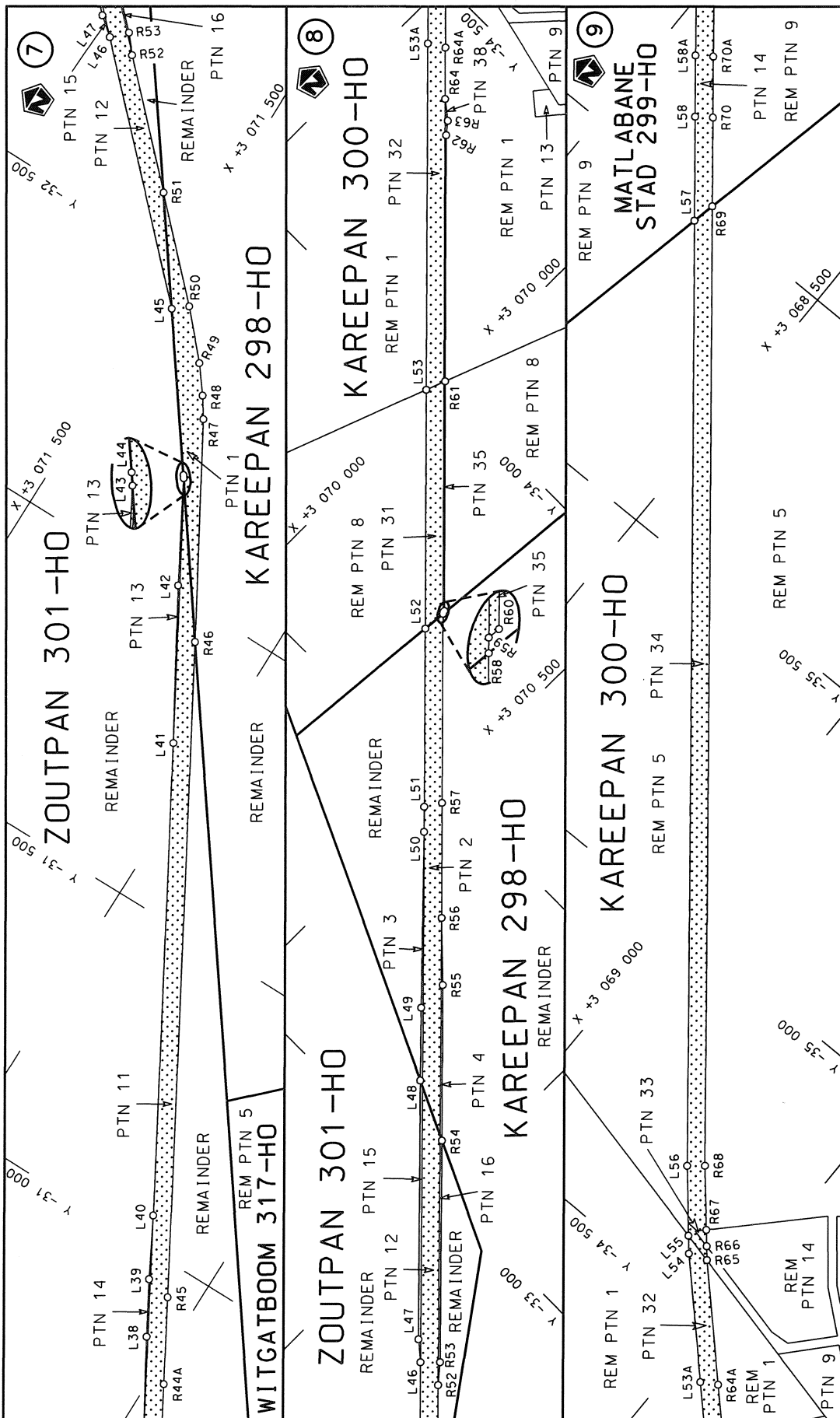
MINISTER VAN VERVOER



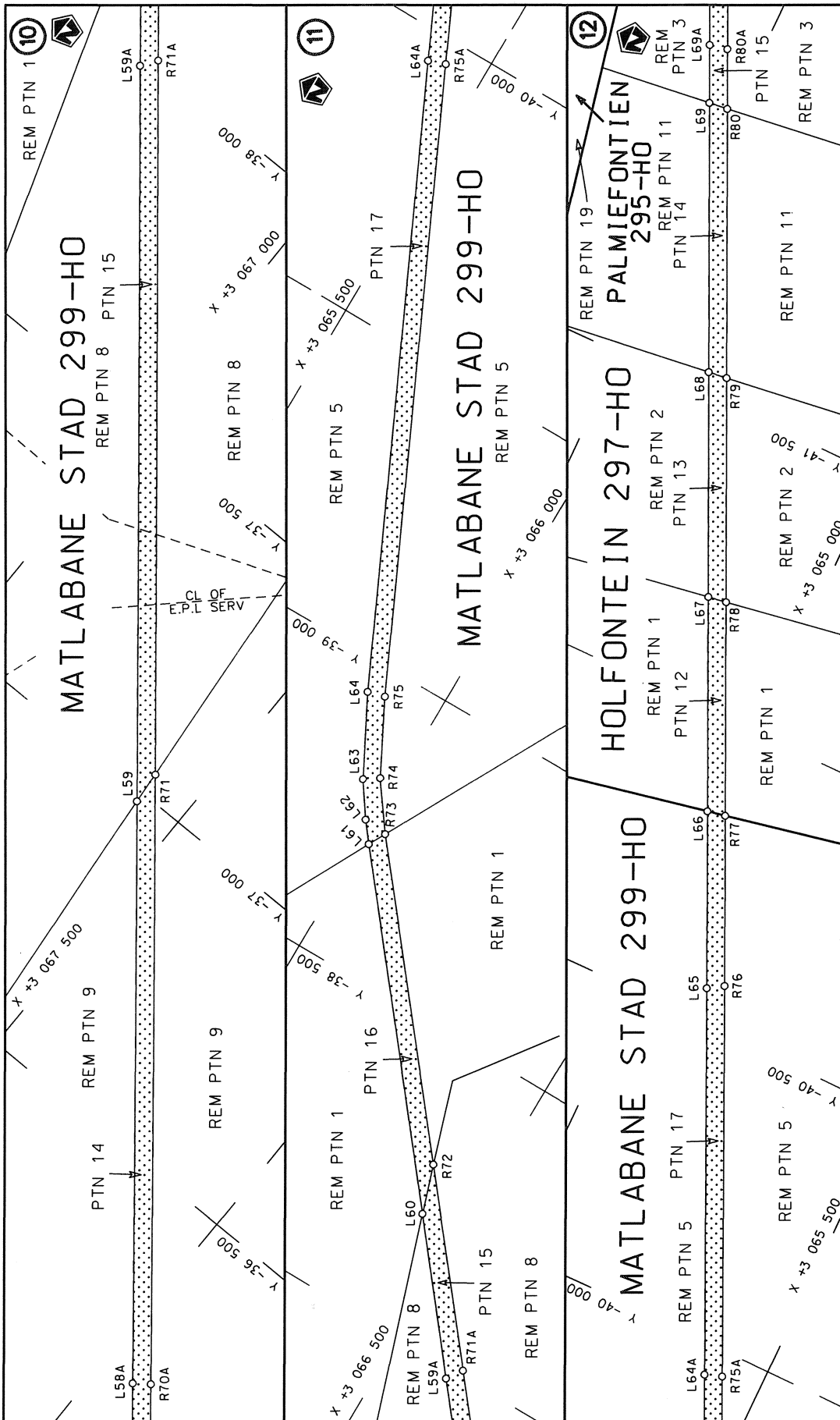
Die Suid Afrikaanse Nasionale Padagentskap Beperk The South African National Roads Agency Limited	Die figuur getoon The figure shown		steldie padreserwe voor van 'n gedeelte represents the road reserve of a portion van Nasionale Roete N12 of National Route	Vel Sheet 1 of 10
				Plan P868/15

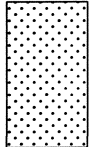


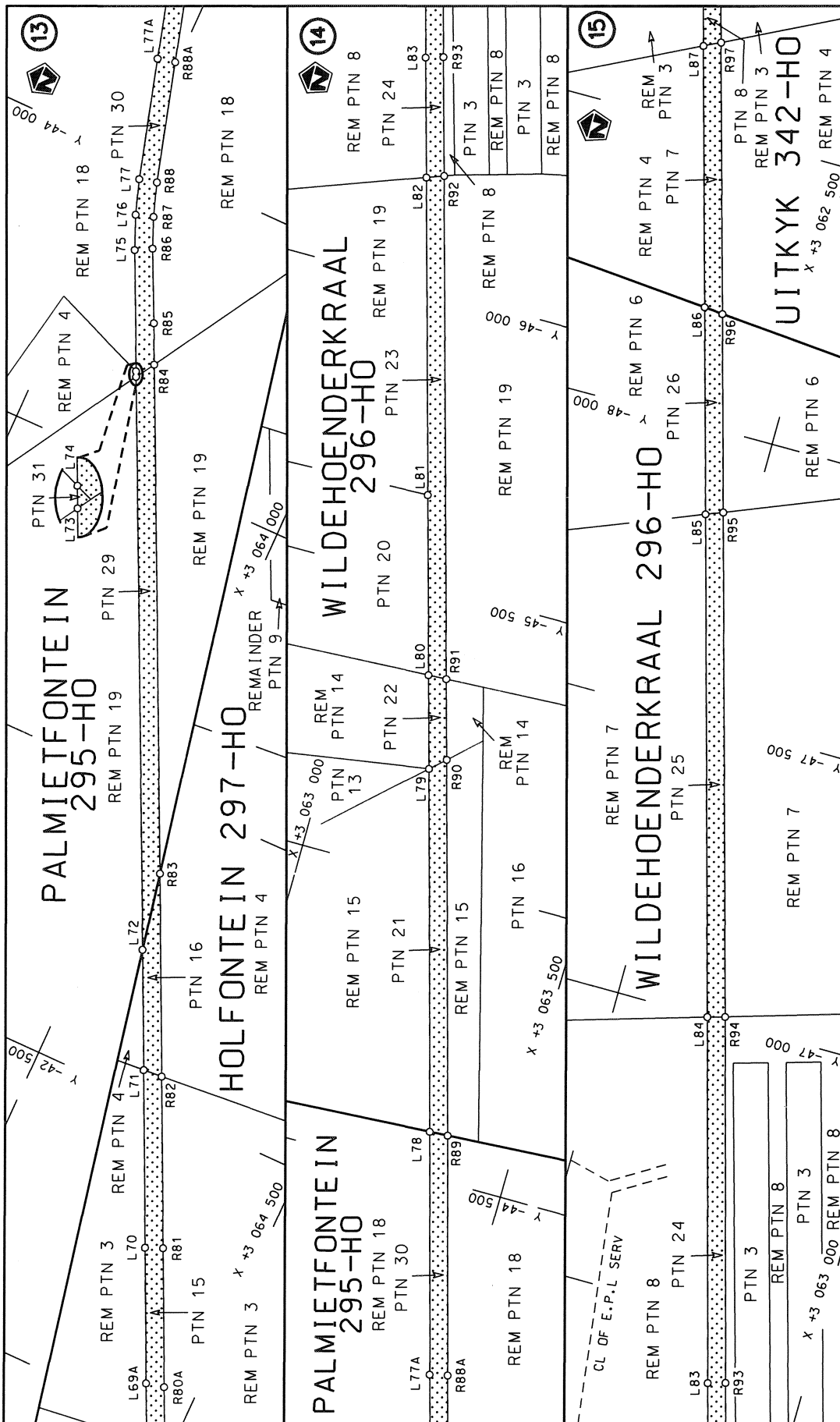
Die Suid Afrikaanse Nasionale Padagentskap Beperk The South African National Roads Agency Limited	Die figuur getoon The figure shown		steldie padreserwe voor van 'n gedeelte represents the road reserve of a portion van Nasionale Roete N12 of National Route Section	
			12	12
			Vel Sheet 2 of 10	Plan P868/15



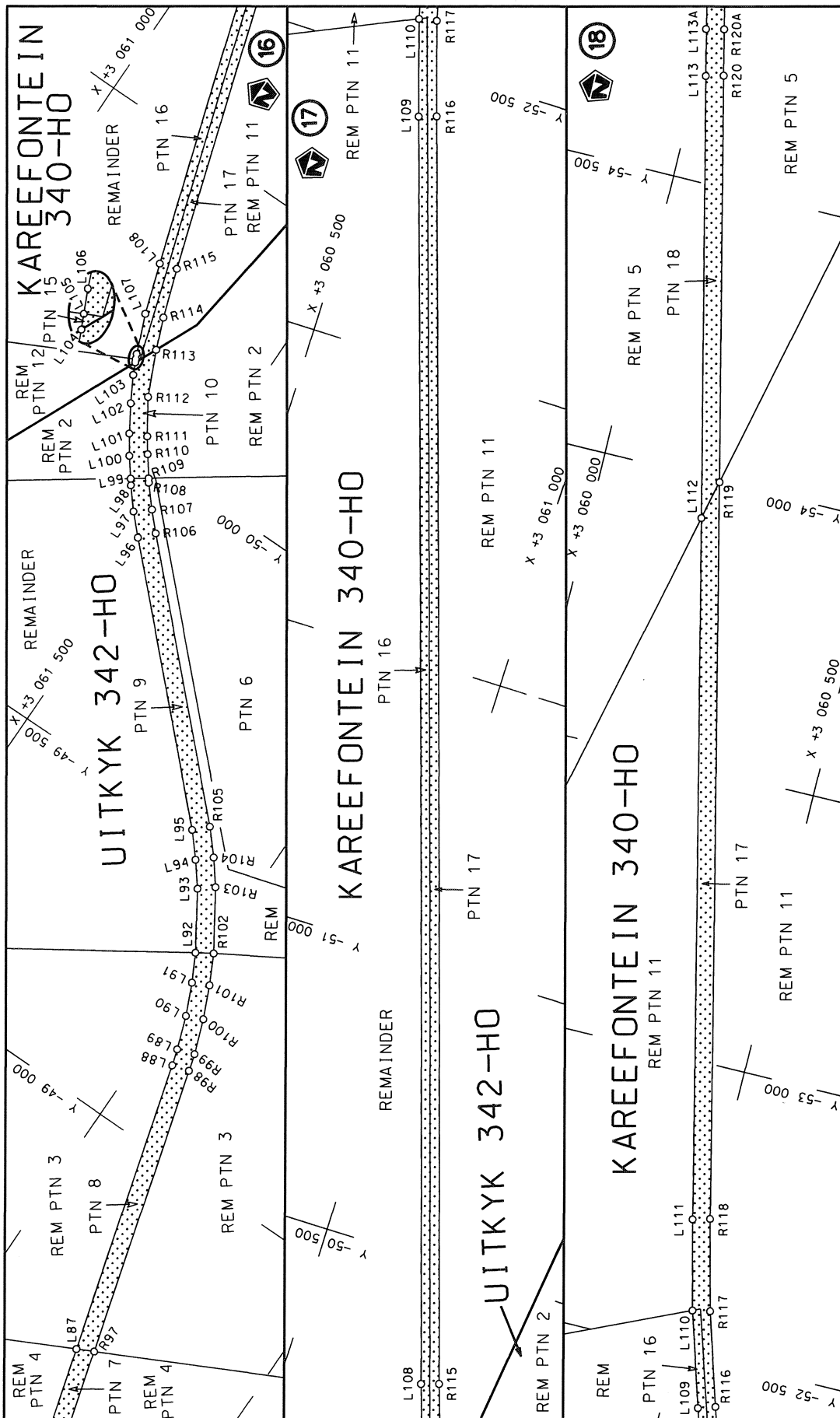
Die Suid Afrikaanse Nasionale Padagentskap Beperk The South African National Roads Agency Limited	Die figuur getoon The figure shown		stelde padreserwe voor van 'n gedeelte represents the road reserve of a portion van Nasionale Roete N12 of National Route Section	Vel Sheet	van of	3 10
			12	Plan		P868/15



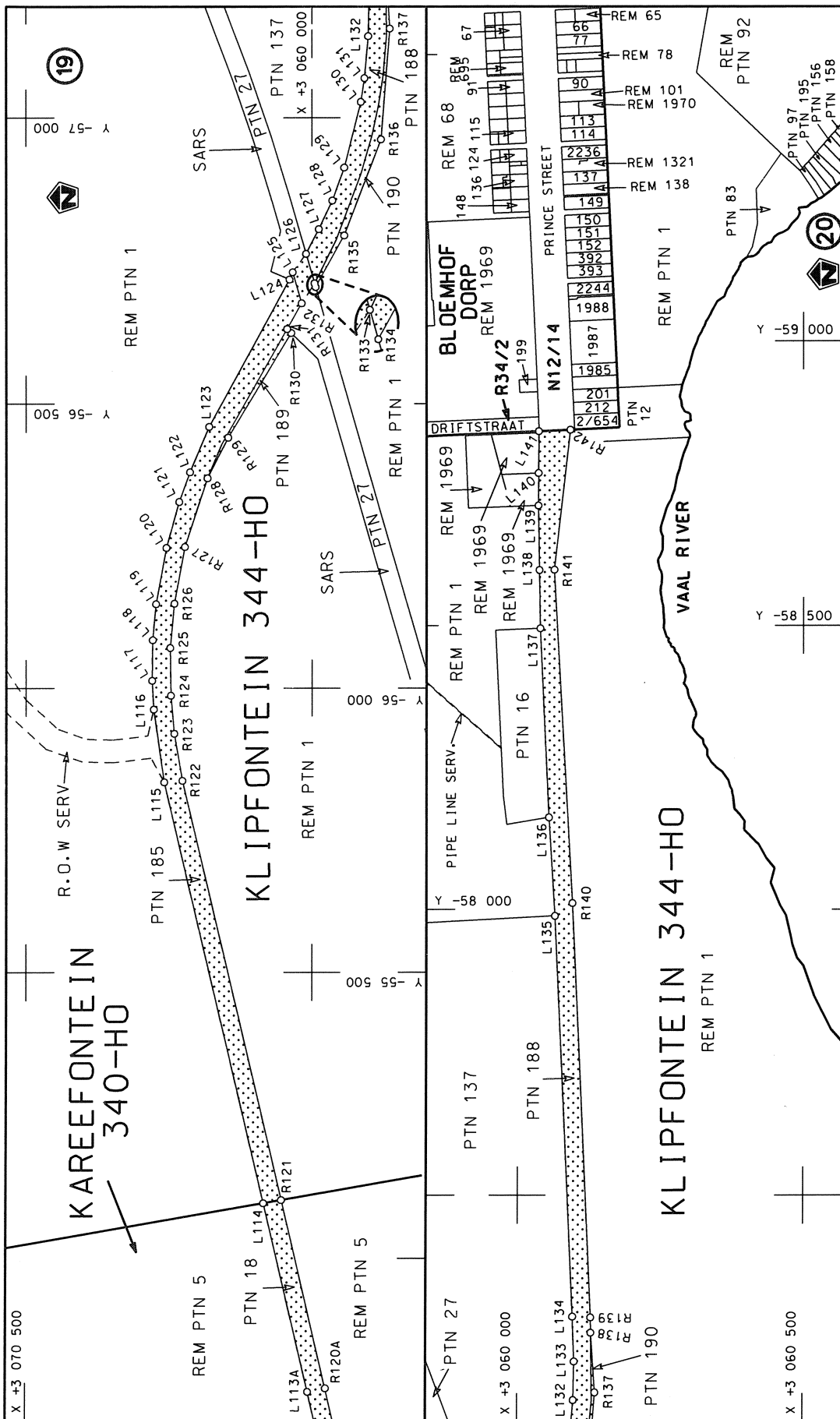
<p>Die Suid Afrikaanse Nasionale Padagentskap Beperk The South African National Roads Agency Limited</p>	<p>Die figuur getoon The figure shown</p>		<p>stede padreserwe voor 'n gedeelte represents the road reserve of a portion van Nasionale Roete N12 of National Route</p>	<p>Vel Sheet 4 van of 10 Plan P868/15</p>
--	---	---	---	---



<p>Die Suid Afrikaanse Nasionale Padagentskap Beperk The South African National Roads Agency Limited</p>	<p>Die figuur getoon The figure shown</p>	<p>steldie padreserwe voor van 'n gedeelte represents the road reserve of a portion van Nasionale Roete N12 of National Route</p>	<p>Vel Sheet 5 of 10</p>
<p>Plan P868/15</p>		<p>12</p>	<p>Seksie Section</p>



<p>Die Suid Afrikaanse Nasionale Padagentskap Beperk The South African National Roads Agency Limited</p>	<p>Die figuur getoon The figure shown</p>	<p>stel die padreserwe voor van 'n gedeelte represents the road reserve of a portion van Nasionale Roete N12 of National Route N12</p> <p>Seksie Section</p>
<p>Vel Sheet</p> <p>6 of</p> <p>10</p>	<p>Plan</p> <p>P868/15</p>	<p>12</p>



<p>Die Suid Afrikaanse Nasionale Padagentskap Beperk The South African National Roads Agency Limited</p>	<p>Die figuur getoon The figure shown</p>	<p>stelde padreserwe voor van 'n gedeelte represents the road reserve of a portion van Nasionale Roete N12 of National Route</p>	<p>Vel Sheet 7 of 10</p>
		<p>12 Seksie Section</p>	<p>Plan P868/15</p>

PADRESERWE KOÖRDINATE / ROAD RESERVE CO-ORDINATES						
LINKERKANT/LEFT HAND SIDE			REGTERKANT/RIGHT HAND SIDE			
	Y	X	WG 25°		Y	X
L1	-21 387.08	3 081 957.30		R1	-21 408.13	3 081 982.35
L2	-22 571.46	3 080 056.82		R2	-22 523.45	3 080 188.82
L3	-22 847.75	3 079 676.85		R3	-22 596.84	3 080 074.68
L4	-22 960.52	3 079 534.96		R4	-22 873.19	3 079 695.25
L5	-24 596.29	3 077 840.30		R5	-22 927.80	3 079 626.27
L6	-25 776.95	3 076 620.77		R6	-22 945.24	3 079 604.29
L7	-26 523.94	3 075 849.16		R7	-22 994.36	3 079 544.49
L8	-26 648.35	3 075 720.48		R8	-23 025.32	3 079 511.62
L9	-26 708.05	3 075 654.76		R9	-24 617.97	3 077 863.54
L10	-26 747.22	3 075 602.95		R10	-25 794.83	3 076 646.95
L11	-26 787.28	3 075 539.24		R11	-26 538.42	3 075 878.72
L12	-26 839.91	3 075 414.61		R12	-26 732.62	3 075 673.12
L13	-26 905.24	3 075 180.10		R13	-26 774.43	3 075 618.03
L14	-26 963.04	3 074 972.01		R14	-26 819.80	3 075 546.16
L15	-27 022.85	3 074 841.11		R15	-26 848.45	3 075 491.36
L16	-27 066.82	3 074 771.26		R16	-26 873.52	3 075 434.64
L17	-27 081.94	3 074 746.13		R17	-26 894.93	3 075 376.00
L18	-27 107.80	3 074 709.34		R18	-26 949.59	3 075 188.27
L19	-27 140.62	3 074 665.94		R19	-26 959.25	3 075 146.15
L20	-27 165.35	3 074 636.81		R20	-27 001.35	3 074 994.03
L21	-27 186.35	3 074 613.84		R21	-27 010.44	3 074 965.40
L22	-27 208.16	3 074 591.71		R22	-27 031.60	3 074 909.74
L23	-27 230.50	3 074 570.21		R23	-27 055.96	3 074 855.00
L24	-27 253.54	3 074 549.73		R24	-27 084.32	3 074 801.92
L25	-27 277.23	3 074 529.96		R25	-27 115.72	3 074 751.85
L26	-27 302.65	3 074 509.80		R26	-27 150.89	3 074 703.13
L27	-27 326.58	3 074 492.51		R27	-27 169.40	3 074 680.08
L28	-27 352.16	3 074 475.08		R28	-27 189.51	3 074 656.59
L29	-27 378.79	3 074 458.36		R29	-27 209.48	3 074 635.05
L30	-27 488.94	3 074 395.14		R30	-27 230.53	3 074 613.42
L31	-27 793.23	3 074 220.49		R31	-27 251.74	3 074 593.12
L32	-28 062.64	3 074 066.04		R32	-27 274.27	3 074 572.74
L33	-28 655.06	3 073 726.41		R33	-27 297.19	3 074 553.72
L34	-28 999.39	3 073 529.01		R34	-27 320.30	3 074 535.48
L35	-30 210.39	3 072 834.70		R35	-27 344.88	3 074 517.80
L36	-30 362.55	3 072 747.46		R36	-27 369.25	3 074 501.32
L37	-30 730.56	3 072 536.47		R37	-27 394.95	3 074 485.10
L38	-30 868.20	3 072 454.67		R38	-27 513.82	3 074 416.89
L39	-30 955.39	3 072 404.66		R39	-27 805.72	3 074 249.40
L40	-31 053.70	3 072 351.22		R40	-28 089.97	3 074 086.46
L41	-31 773.29	3 071 938.72		R41	-28 678.54	3 073 749.09
L42	-32 013.21	3 071 797.89		R42	-29 012.85	3 073 557.46
L43	-32 178.31	3 071 705.54		R43	-30 219.46	3 072 865.70
L44	-32 183.02	3 071 702.11		R44	-30 423.99	3 072 748.44
L45	-32 419.14	3 071 529.56		R45	-30 945.80	3 072 449.28
L46	-32 764.53	3 071 185.47		R46	-31 944.61	3 071 876.30
L47	-32 789.96	3 071 154.24		R47	-32 284.50	3 071 679.74
L48	-33 110.64	3 070 835.05		R48	-32 318.91	3 071 656.60
L49	-33 201.57	3 070 745.57		R49	-32 364.18	3 071 621.65
L50	-33 422.94	3 070 529.90		R50	-32 438.92	3 071 553.48
L51	-33 454.30	3 070 498.71		R51	-32 583.77	3 071 409.26

Vel	8	Van	10	P868/15
Sheet		of		

PADRESERWE KOÖRDINATE / ROAD RESERVE CO-ORDINATES											
LINKERKANT/LEFT HAND SIDE					REGTERKANT/RIGHT HAND SIDE						
	Y		X	WG 25°		Y		X			
L52	-33	677.33	3	070	276.94	R52	-32	758.20	3	071	235.50
L53	-33	975.56	3	069	980.40	R53	-32	788.69	3	071	209.62
L54	-34	565.25	3	069	394.05	R54	-33	063.28	3	070	936.26
L55	-34	588.92	3	069	373.52	R55	-33	256.18	3	070	743.79
L56	-34	681.23	3	069	293.48	R56	-33	337.52	3	070	658.74
L57	-35	970.05	3	068	245.11	R57	-33	481.18	3	070	515.78
L58	-36	111.15	3	068	130.33	R58	-33	717.63	3	070	280.48
L59	-36	982.82	3	067	421.43	R59	-33	720.06	3	070	278.06
L60	-38	207.77	3	066	425.21	R60	-33	722.95	3	070	278.29
L61	-38	714.36	3	066	013.23	R61	-34	009.40	3	069	993.20
L62	-38	748.66	3	065	986.47	R62	-34	314.67	3	069	689.34
L63	-38	807.66	3	065	946.00	R63	-34	334.52	3	069	673.43
L64	-38	943.83	3	065	874.71	R64	-34	358.24	3	069	643.21
L65	-40	558.13	3	065	115.64	R65	-34	576.74	3	069	425.90
L66	-40	838.95	3	064	983.64	R66	-34	595.00	3	069	410.01
L67	-41	180.26	3	064	823.20	R67	-34	616.53	3	069	391.27
L68	-41	537.43	3	064	655.31	R68	-34	701.18	3	069	317.58
L69	-41	962.50	3	064	455.50	R69	-36	009.48	3	068	253.39
L70	-42	267.99	3	064	311.90	R70	-36	129.96	3	068	155.39
L71	-42	548.29	3	064	180.09	R71	-37	039.04	3	067	415.98
L72	-42	738.60	3	064	090.60	R72	-38	291.24	3	066	397.49
L73	-43	649.38	3	063	662.32	R73	-38	744.24	3	066	029.04
L74	-43	658.38	3	063	658.08	R74	-38	824.33	3	065	971.16
L75	-43	849.97	3	063	567.99	R75	-38	952.05	3	065	905.09
L76	-43	906.75	3	063	544.14	R76	-40	575.33	3	065	141.98
L77	-43	965.63	3	063	523.85	R77	-40	845.30	3	065	015.12
L78	-44	576.99	3	063	350.34	R78	-41	185.52	3	064	855.26
L79	-45	188.25	3	063	176.87	R79	-41	541.64	3	064	687.92
L80	-45	347.10	3	063	131.79	R80	-41	966.68	3	064	488.20
L81	-45	651.72	3	063	045.45	R81	-42	280.24	3	064	340.86
L82	-46	185.83	3	062	893.87	R82	-42	551.02	3	064	213.53
L83	-46	386.99	3	062	836.78	R83	-42	872.41	3	064	062.41
L84	-47	000.76	3	062	662.59	R84	-43	681.82	3	063	681.80
L85	-47	850.70	3	062	421.39	R85	-43	747.29	3	063	651.02
L86	-48	199.39	3	062	322.47	R86	-43	864.92	3	063	595.47
L87	-48	637.90	3	062	198.02	R87	-43	916.08	3	063	573.88
L88	-49	141.03	3	062	055.24	R88	-43	973.07	3	063	554.14
L89	-49	169.06	3	062	046.50	R89	-44	578.98	3	063	382.19
L90	-49	226.07	3	062	026.06	R90	-45	212.05	3	063	202.53
L91	-49	280.14	3	062	001.74	R91	-45	348.75	3	063	163.73
L92	-49	326.78	3	061	977.25	R92	-46	196.72	3	062	923.09
L93	-49	421.41	3	061	916.27	R93	-46	396.06	3	062	866.52
L94	-49	461.56	3	061	884.61	R94	-47	009.72	3	062	692.39
L95	-49	501.59	3	061	849.96	R95	-47	862.41	3	062	450.42
L96	-49	873.58	3	061	479.98	R96	-48	196.73	3	062	355.55
L97	-49	907.30	3	061	447.67	R97	-48	652.09	3	062	226.45
L98	-49	942.78	3	061	417.77	R98	-49	150.07	3	062	085.26
L99	-49	951.98	3	061	410.65	R99	-49	179.17	3	062	076.31
L100	-49	983.83	3	061	386.02	R100	-49	238.26	3	062	054.41
L101	-50	016.24	3	061	363.97	R101	-49	293.41	3	062	029.90
L102	-50	061.43	3	061	336.07	R102	-49	343.54	3	062	004.01

Vel	9	Van	10	P868/15
Sheet		of		

PADRESERWE KOÖRDINATE / ROAD RESERVE CO-ORDINATES					
LINKERKANT/LEFT HAND SIDE			REGTERKANT/RIGHT HAND SIDE		
	Y	X	WG 25°	Y	X
L103	-50 105.17	3 061	311.60	R103	-49 441.21 3 061 940.49
L104	-50 130.39	3 061	299.80	R104	-49 482.52 3 061 908.42
L105	-50 125.11	3 061	302.27	R105	-49 523.53 3 061 872.26
L106	-50 138.84	3 061	295.85	R106	-49 897.24 3 061 501.14
L107	-50 205.00	3 061	268.34	R107	-49 928.03 3 061 472.10
L108	-50 291.95	3 061	239.55	R108	-49 963.84 3 061 440.87
L109	-52 411.32	3 060	563.63	R109	-49 970.05 3 061 436.21
L110	-52 574.33	3 060	512.68	R110	-50 003.99 3 061 410.80
L111	-52 728.81	3 060	474.37	R111	-50 029.54 3 061 392.52
L112	-53 928.96	3 060	191.48	R112	-50 087.56 3 061 354.77
L113	-54 683.18	3 060	013.71	R113	-50 163.82 3 061 319.74
L114	-55 096.47	3 059	916.33	R114	-50 217.47 3 061 297.94
L115	-55 834.22	3 059	742.51	R115	-50 301.31 3 061 269.48
L116	-55 962.60	3 059	724.07	R116	-52 421.01 3 060 593.21
L117	-56 013.30	3 059	721.17	R117	-52 580.55 3 060 543.26
L118	-56 084.96	3 059	722.20	R118	-52 736.86 3 060 504.21
L119	-56 148.28	3 059	727.93	R119	-53 998.25 3 060 207.23
L120	-56 247.40	3 059	746.01	R120	-54 691.66 3 060 043.96
L121	-56 328.13	3 059	768.65	R121	-55 101.86 3 059 947.45
L122	-56 380.28	3 059	787.67	R122	-55 836.96 3 059 774.50
L123	-56 460.01	3 059	821.23	R123	-55 919.77 3 059 760.27
L124	-56 717.61	3 059	960.77	R124	-55 987.04 3 059 754.09
L125	-56 730.48	3 059	966.27	R125	-56 071.15 3 059 752.87
L126	-56 762.64	3 059	989.62	R126	-56 149.13 3 059 760.25
L127	-56 805.66	3 060	012.12	R127	-56 249.00 3 059 778.60
L128	-56 855.69	3 060	035.81	R128	-56 369.66 3 059 818.25
L129	-56 913.29	3 060	056.66	R129	-56 441.00 3 059 854.22
L130	-57 027.95	3 060	085.95	R130	-56 624.25 3 059 963.65
L131	-57 069.39	3 060	092.40	R131	-56 631.07 3 059 956.68
L132	-57 142.66	3 060	099.00	R132	-56 676.19 3 059 981.83
L133	-57 210.07	3 060	100.54	R133	-56 711.01 3 060 004.52
L134	-57 288.22	3 060	097.56	R134	-56 704.39 3 060 006.41
L135	-57 988.76	3 060	065.37	R135	-56 794.69 3 060 056.62
L136	-58 161.90	3 060	054.66	R136	-56 962.44 3 060 121.46
L137	-58 495.27	3 060	039.49	R137	-57 156.03 3 060 136.90
L138	-58 597.91	3 060	037.82	R138	-57 260.43 3 060 129.52
L139	-58 711.58	3 060	035.93	R139	-57 286.94 3 060 129.18
L140	-58 768.53	3 060	036.26	R140	-58 011.26 3 060 096.07
L141	-58 842.05	3 060	036.70	R141	-58 598.56 3 060 064.12
				R142	-58 844.60 3 060 092.17

Vel	10	Van	10	P868/15
Sheet		of		

Printed by and obtainable from the Government Printer, Bosman Street, Private Bag X85, Pretoria, 0001

Publications: Tel: (012) 748 6052, 748 6053, 748 6058

Advertisements: Tel: (012) 748 6205, 748 6208, 748 6209, 748 6210, 748 6211

Subscriptions: Tel: (012) 748 6054, 748 6055, 748 6057

Gedruk deur en verkrygbaar by die Staatsdrukker, Bosmanstraat, Privaatsak X85, Pretoria, 0001

Publikasies: Tel: (012) 748 6052, 748 6053, 748 6058

Advertensies: Tel: (012) 748 6205, 748 6208, 748 6209, 748 6210, 748 6211

Subskripsies: Tel: (012) 748 6054, 748 6055, 748 6057