



Government Gazette Staatskoerant

REPUBLIC OF SOUTH AFRICA
REPUBLIEK VAN SUID-AFRIKA

Vol. 601

Pretoria, 8 July
Julie 2015

No. 38969

N.B. The Government Printing Works will not be held responsible for the quality of "Hard Copies" or "Electronic Files" submitted for publication purposes



AIDS HELPLINE: 0800-0123-22 Prevention is the cure

DISCLAIMER:

Government Printing Works reserves the right to apply the 25% discount to all Legal and Liquor notices that comply with the business rules for notice submissions for publication in gazettes.

National, Provincial, Road Carrier Permits and Tender notices will pay the price as published in the Government Gazettes.

For any information, please contact the eGazette Contact Centre on 012-748 6200 or email info.egazette@gpw.gov.za

CONTENTS**INHOUD**

<i>No.</i>	<i>Page No.</i>	<i>Gazette No.</i>	<i>No.</i>	<i>Bladsy No.</i>	<i>Koerant No.</i>
GOVERNMENT NOTICE			GOEWERMENTSKENNISGEWING		
Transport, Department of			Vervoer, Departement van		
<i>Government Notice</i>			<i>Goewermentskennisgewing</i>		
583		South African National Roads Agency Limited and National Roads Act (7/1998): Declaration Amendment of National Road R571 Section 1	3	38969	
			583		Wet op die Suid-Afrikaanse Nasionale Padagentskap Beperk en op Nasionale Paaie Wet (7/1998): Verklaring wysiging van Nasionale Pad R571 Seksie 1
			4	38969	

GOVERNMENT NOTICE

DEPARTMENT OF TRANSPORT

No. 583

8 July 2015

THE SOUTH AFRICAN NATIONAL ROADS AGENCY SOC LIMITED

Registration No: 1998/009584/30

DECLARATION AMENDMENT OF NATIONAL ROAD R571 SECTION 1

AMENDMENT OF DECLARATION NO. 784 OF 2000.

By virtue of section 40(1)(b) of The South African National Roads Agency Limited and National Roads Act, 1998 (Act No. 7 of 1998), I hereby amend Declaration No. 784 of 2000 by substituting paragraph C, with the subjoined sheets 1 to 13 of Plan No. P804/12.

[National Road R571 Section 1: Mananga Border Post (Swaziland) – Komatipoort]



MINISTER OF TRANSPORT

GOEWERMENSKENNISGEWING

DEPARTEMENT VAN VERVOER

No. 583

1 Julie 2015

DIE SUID-AFRIKAANSE NASIONALE PADAGENTSKAP MSB BEPERK

Registrasie No: 1998/009584/30

VERKLARING WYSIGING VAN NASIONALE PAD R571 SEKSIE 1

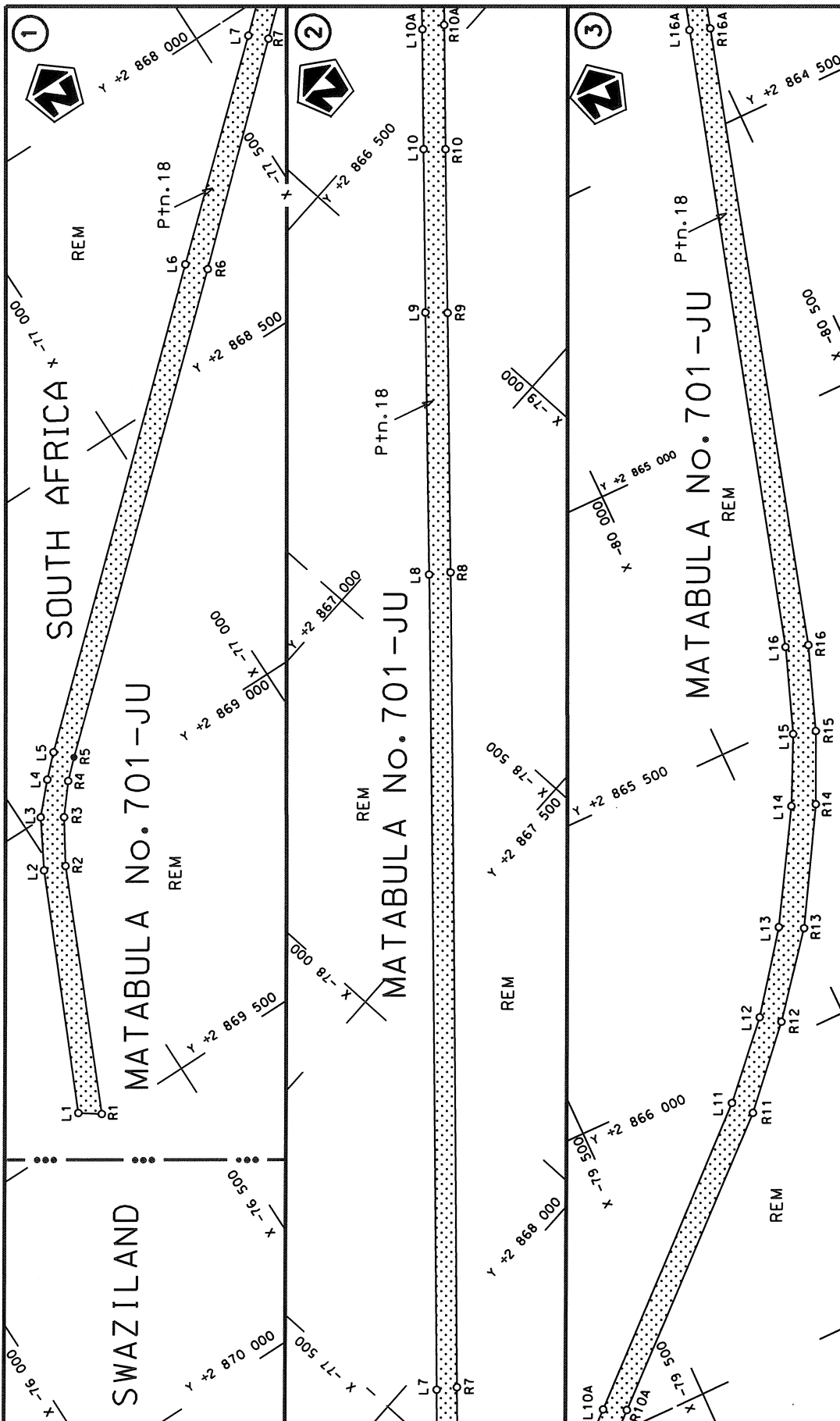
WYSIGING VAN VERKLARING NO. 784 VAN 2000

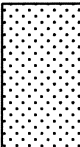
Kragtens Artikel 40(1)(b) van die Wet op die Suid Afrikaanse Nasionale Padagentskap Beperk en op Nasionale Paaie, 1998 (Wet no. 7 van 1998), wysig ek hiermee Verklaring no. 784 van 2000 deur paragraaf C, te vervang met meegaande velle 1 tot 13 van Plan no. P804/12.

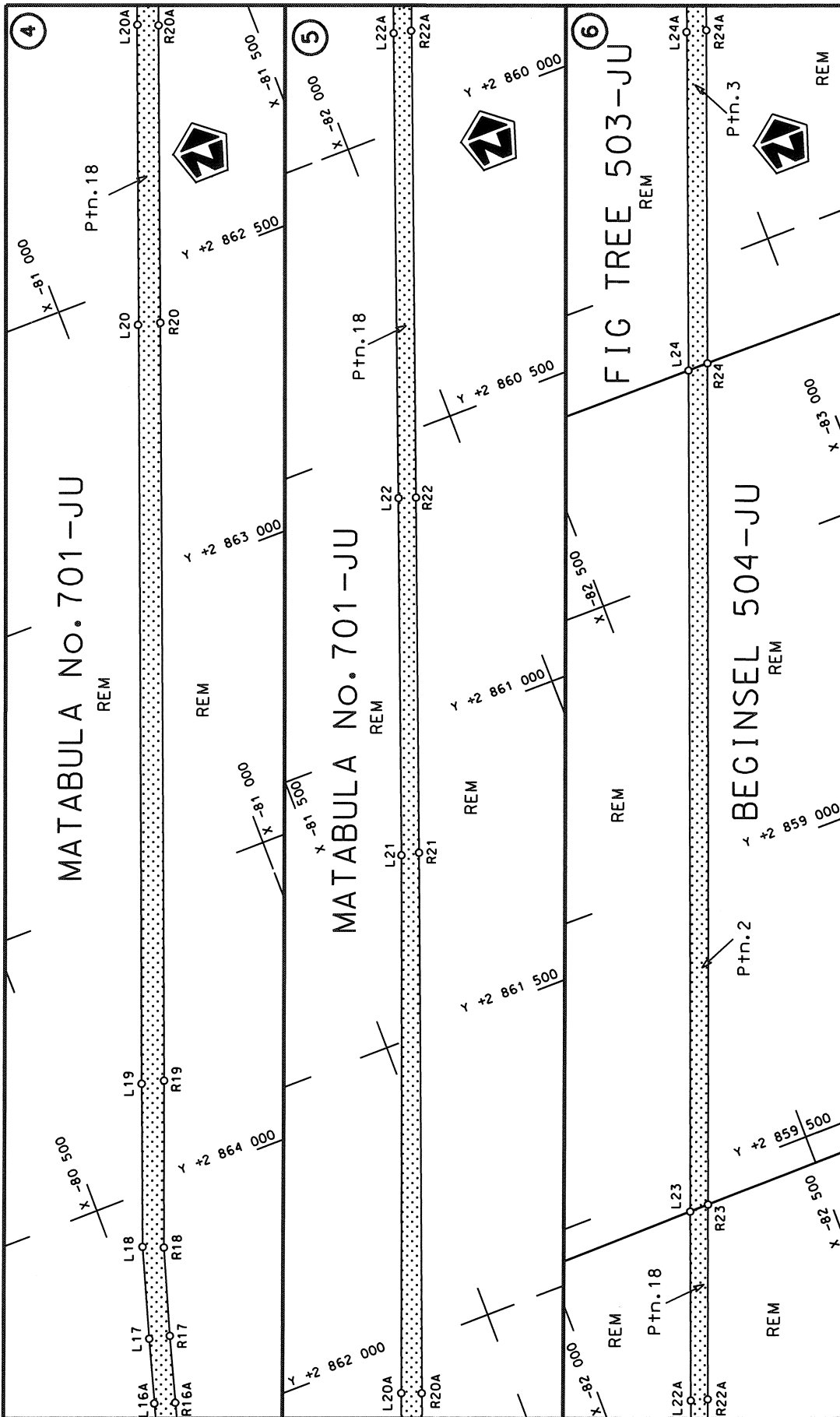
[Nasionale Pad R571 Seksie 1: Mananga Grenspos (Swaziland) – Komatipoort]



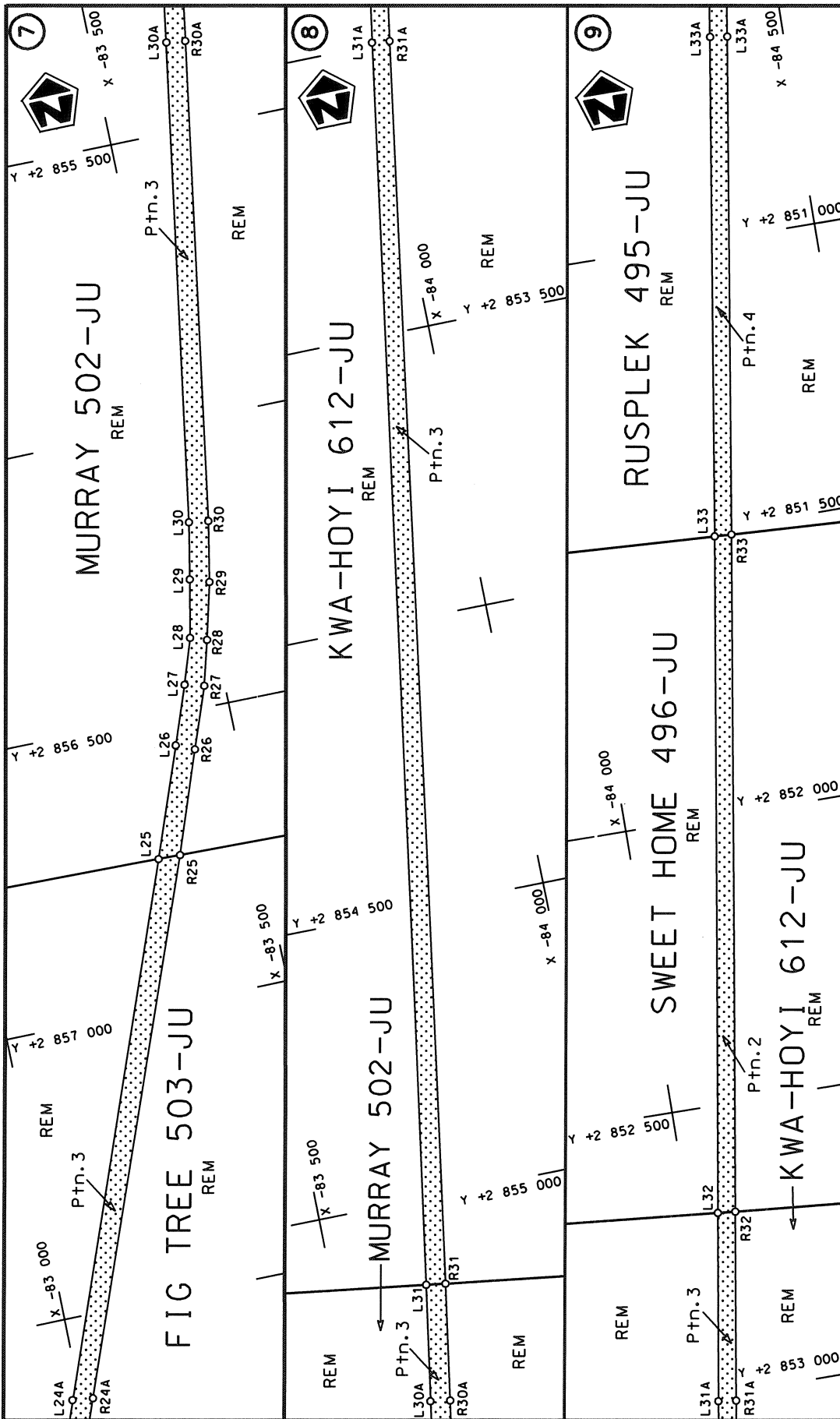
MINISTER VAN VERVOER



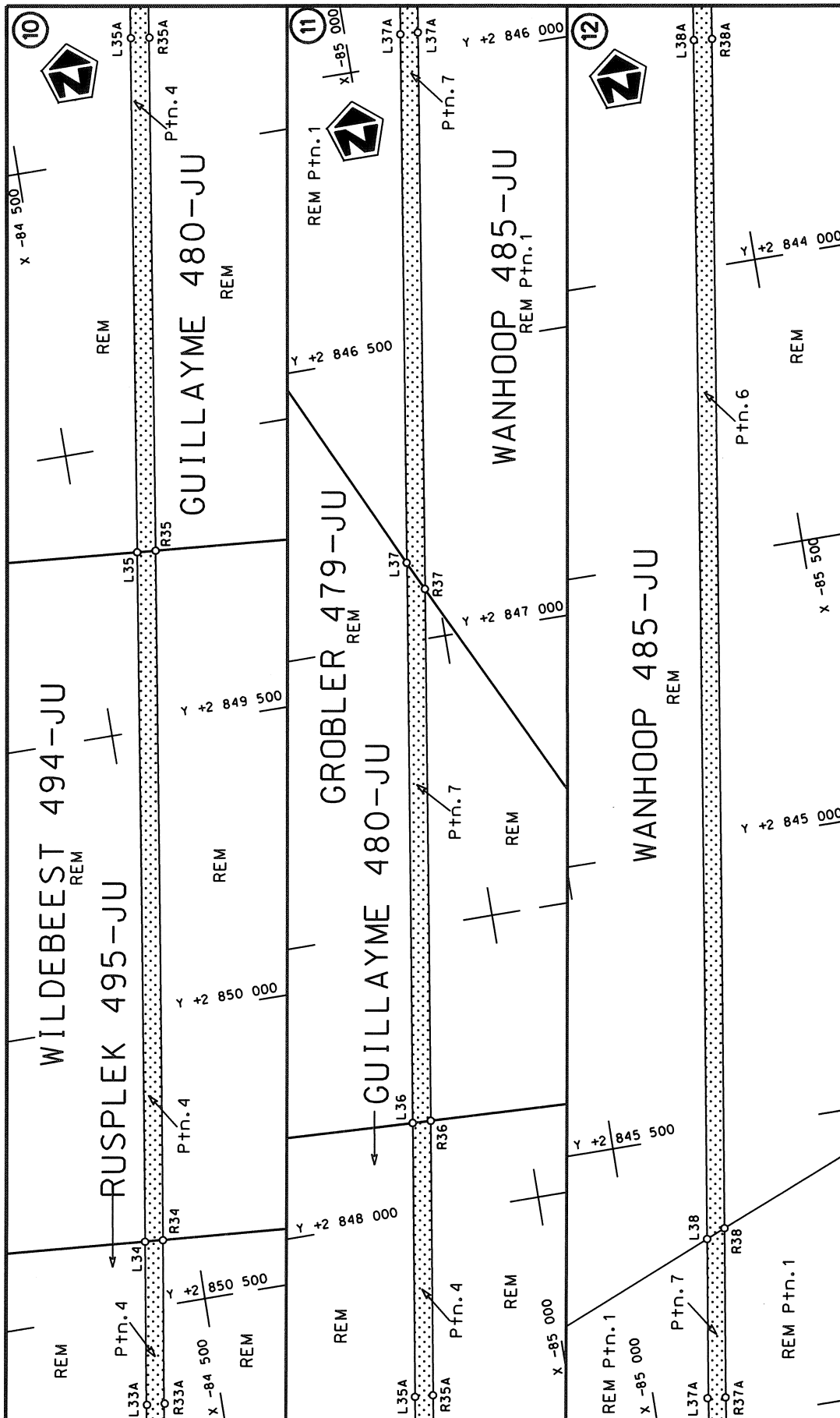
Die Suid Afrikaanse Nasionale Padagentskap Beperk The South African National Roads Agency Limited	Die figuur getoon The figure shown		steldie padreserwe voor van 'n gedeelte represents the road reserve of a portion van Nasionale Roete R571 of National Route Section	Vel Sheet 1 of 13
				Plan P804/12



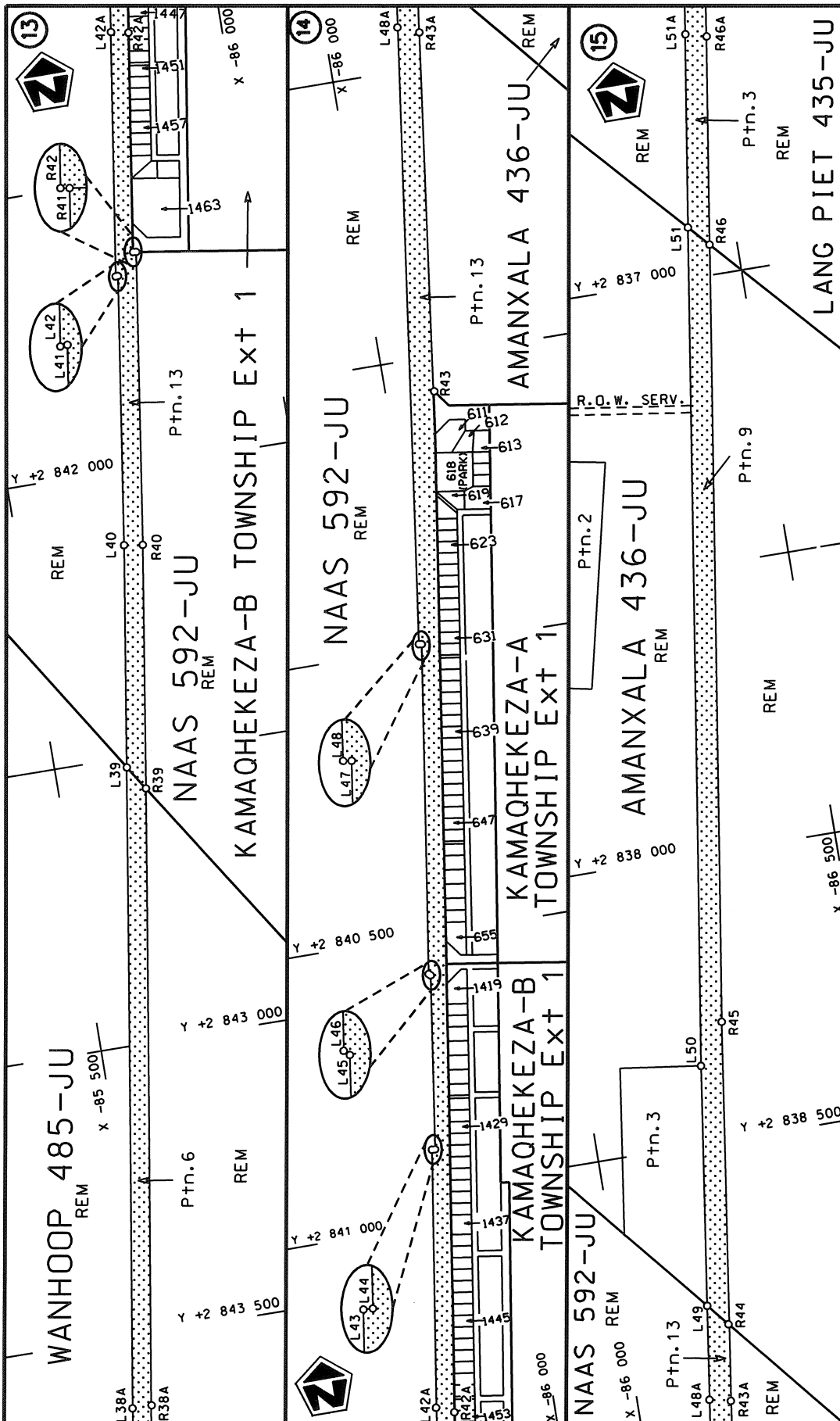
<p>Die Suid Afrikaanse Nasionale Padagentskap Beperk The South African National Roads Agency Limited</p>	<p>Die figuur getoon The figure shown</p>	<p>steldie padreserwe voor van 'n gedeelte represents the road reserve of a portion van Nasionale Roete R571 of National Route</p>	<p>Vel Sheet 2 of 13</p> <p>Plan P804/12</p>
--	---	--	--



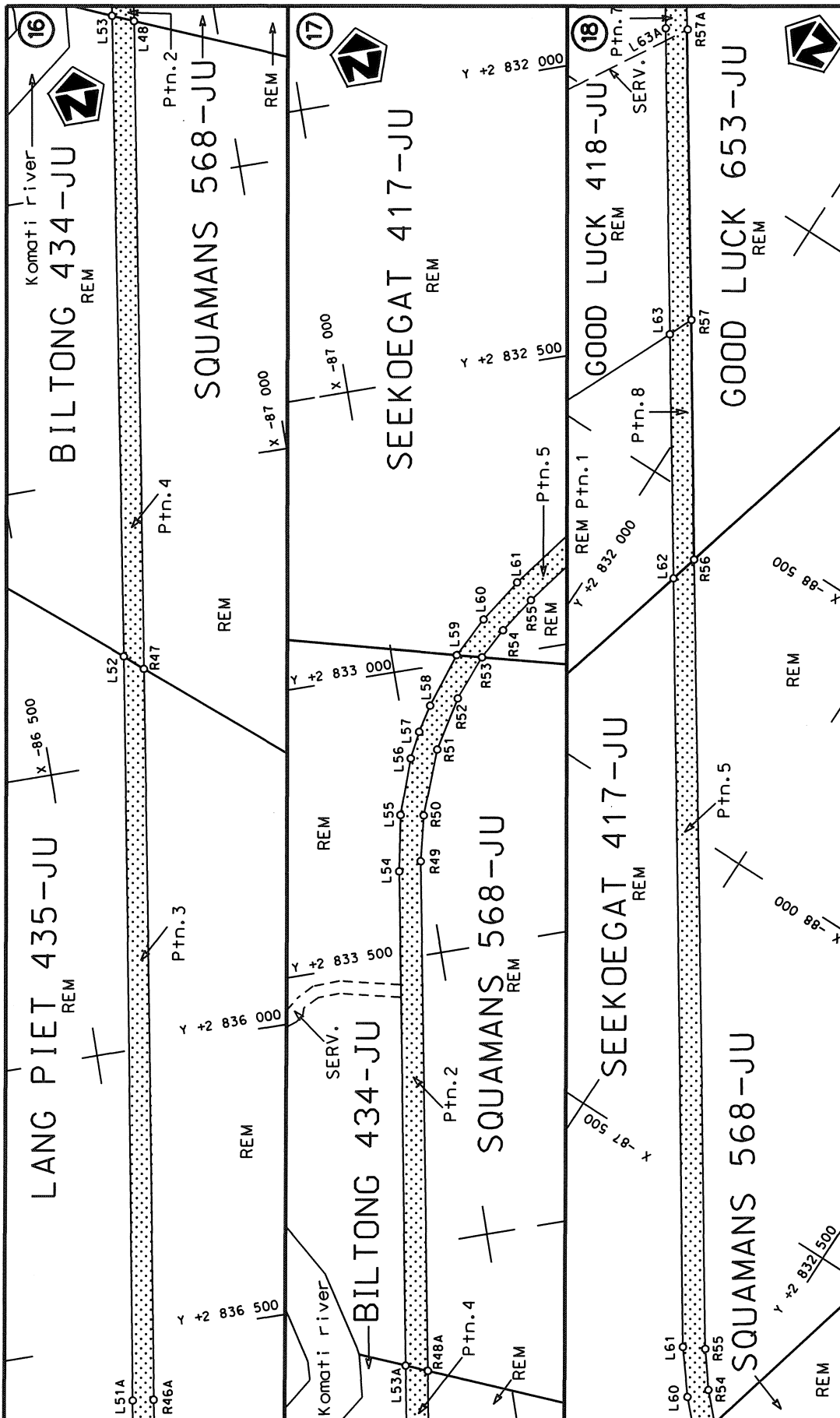
<p>Die Suid Afrikaanse Nasionale Padagentskap Beperk The South African National Roads Agency Limited</p>	<p>Die figuur getoon The figure shown</p>	<p>Vel Sheet 3 of 13 Plan P804/12</p>
<p>steeldie padreserwe voor 'n gedeelte represents the road reserve of a portion van Nasionale Roete R571 Seksie of National Route R571 Section</p>		<p>1</p>



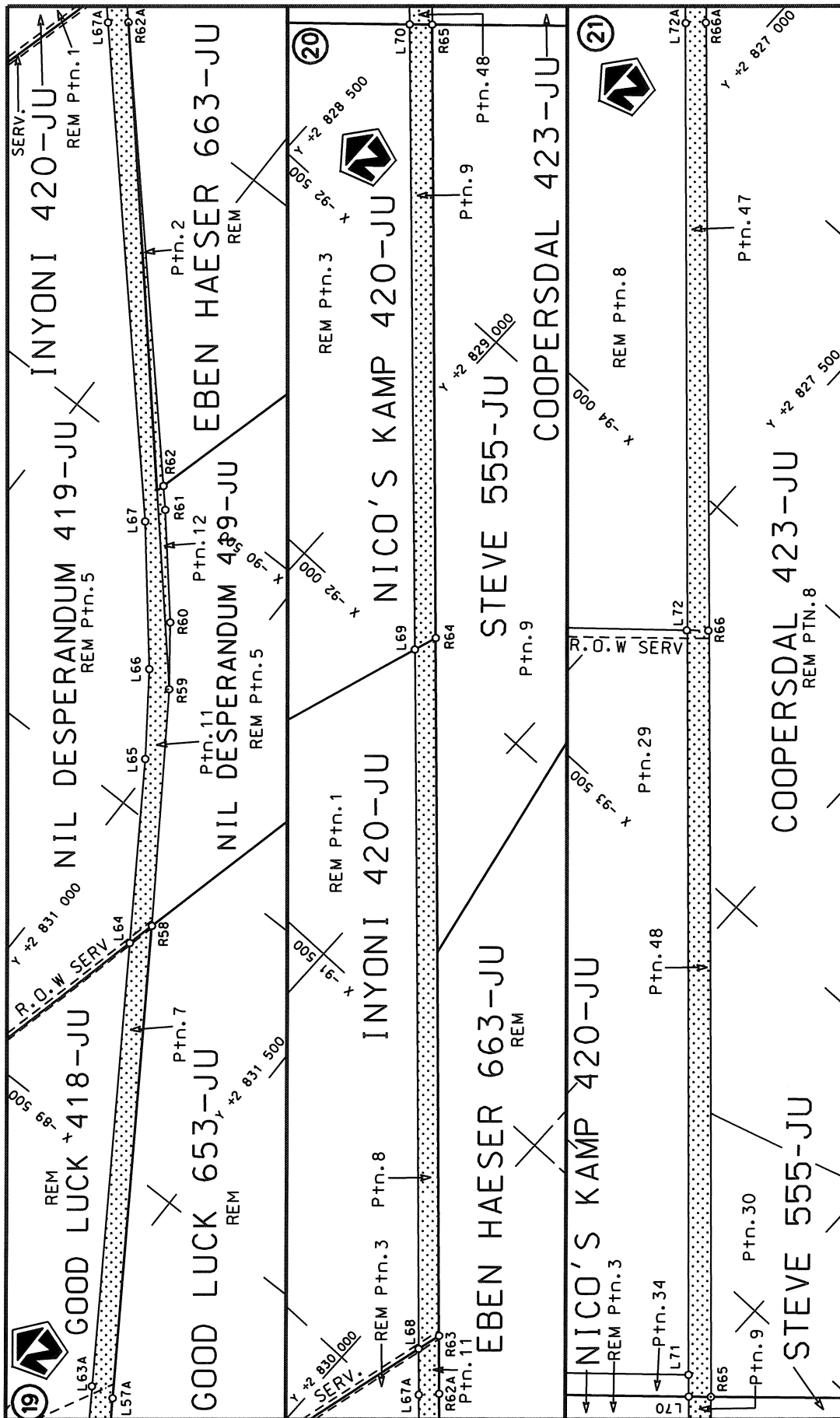
<p>Die Suid Afrikaanse Nasionale Padagentskap Beperk The South African National Roads Agency Limited</p>	<p>Die figuur getoon The figure shown</p>	<p>steldie padreserwe voor van 'n gedeelte represents the road reserve of a portion van Nasionale Roete R571 of National Route Section</p>	<p>Vel Sheet 4 of 13</p>
<p>Die figuur getoon The figure shown</p>		<p>steldie padreserwe voor van 'n gedeelte represents the road reserve of a portion van Nasionale Roete R571 of National Route Section</p>	<p>Plan P804/12</p>



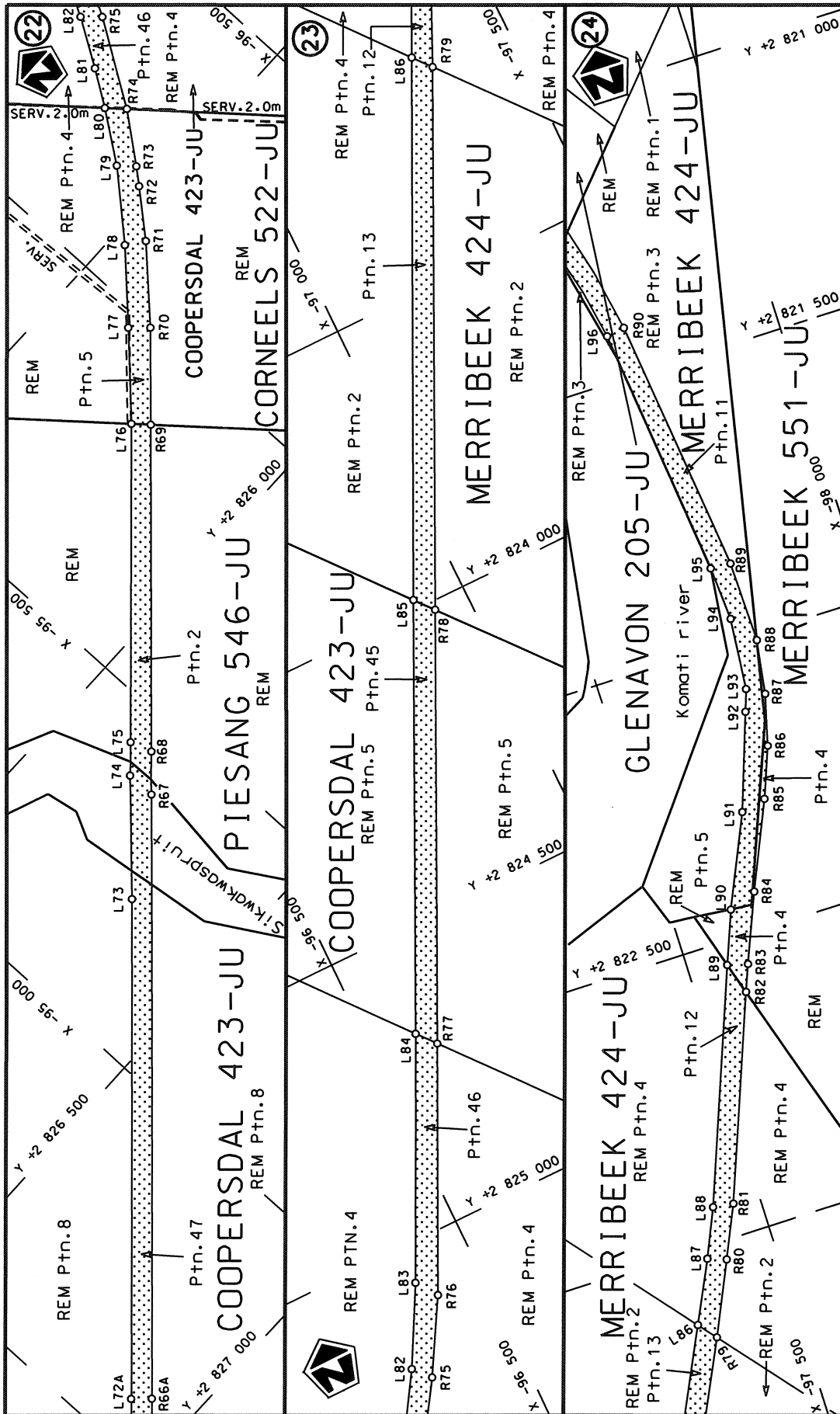
Die Suid Afrikaanse Nasionale Padagentskap Beperk The South African National Roads Agency Limited	Die figuur getoon The figure shown		steldie podreserwe voor van 'n gedeelte represents the road reserve of a portion van Nasionale Roete R571 of National Route Section	Vel Sheet 5 of 13
				Plan P804/12



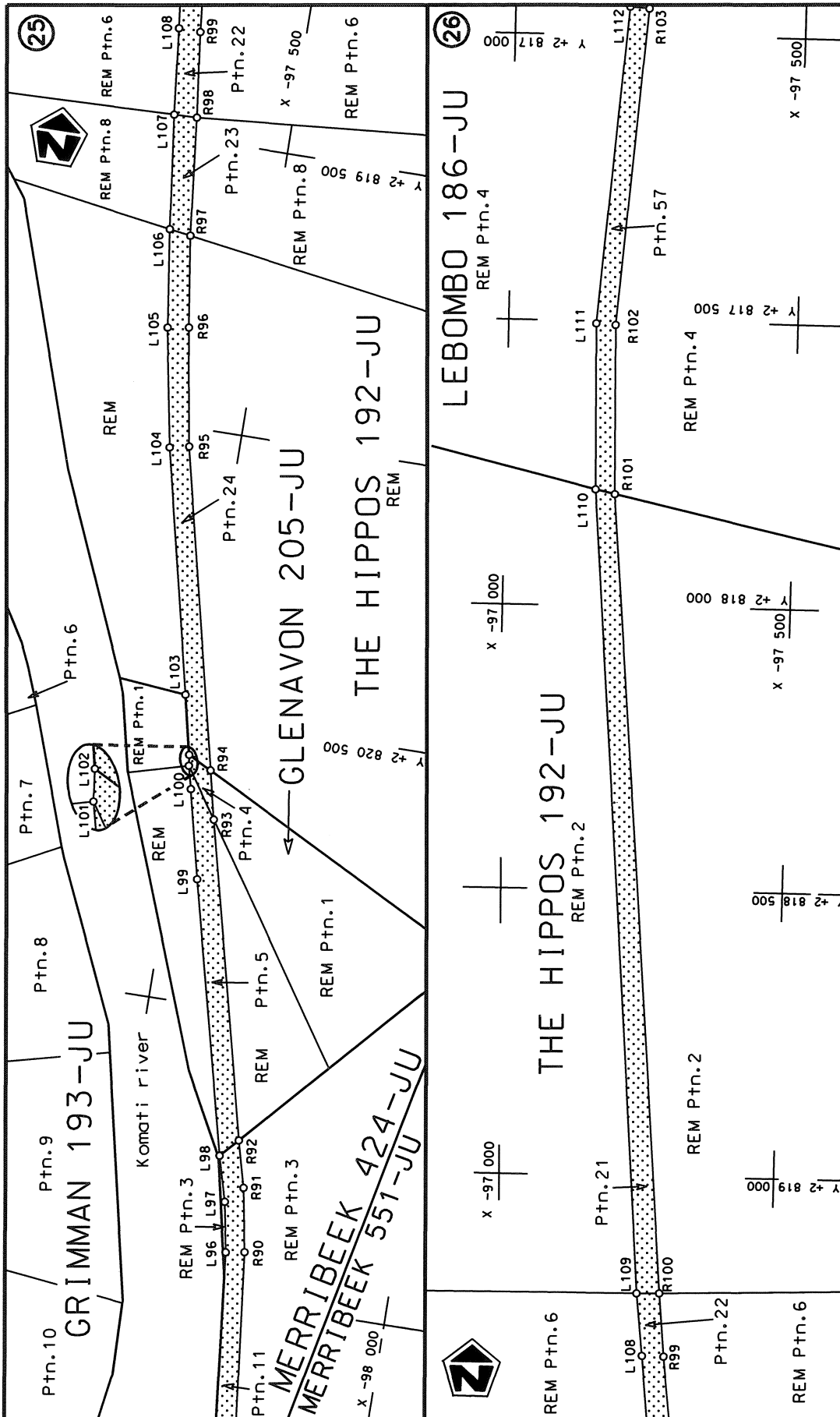
<p>Die Suid Afrikaanse Nasionale Padagentskap Beperk The South African National Roads Agency Limited</p>	<p>Die figuur getoon The figure shown</p>	<p>steldie padreserwe voor van 'n gedeelte represents the road reserve of a portion van Nasionale Roete R571 Sektie of National Route R571 Section</p>	<p>Vel Sheet 6 of 13 Plan P804/12</p>
--	---	--	---

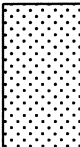


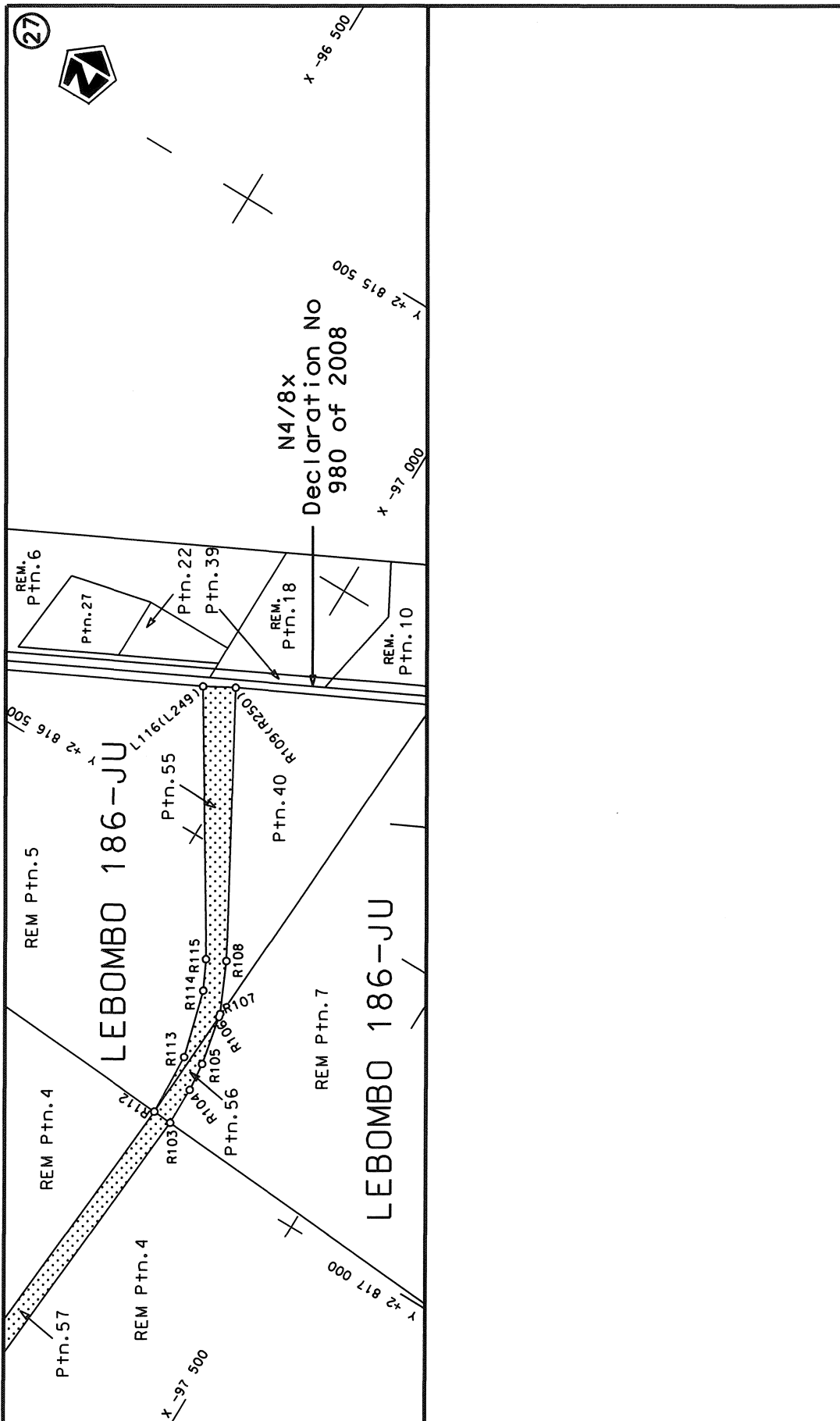
<p>Die Suid Afrikaanse Nasionale Padagentskap Beperk The South African National Roads Agency Limited</p>	<p>Die figuur getoon The figure shown</p>	<p>steidie padreserwe voor van 'n gedeelte represents the road reserve of a portion van Nasionale Roete R571 Seksie of National Route R571 Section</p>
<p>Vel Sheet 7 of 13</p>	<p>Plan P804/12</p>	<p>1</p>

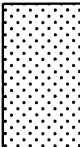


<p>Die Suid Afrikaanse Nasionale Padagentskap Beperk The South African National Roads Agency Limited</p>	<p>Die figuur getoon The figure shown</p> <p>stelsel padreserwe voor van 'n gedeelte represents the road reserve of a portion van Nasionale Roete R571 Sektie of National Route R571 Section</p>	<p>Vel Sheet 8 of 13</p> <p>Plan P804/12</p>
--	--	--



Die Suid Afrikaanse Nasionale Padagentskap Beperk The South African National Roads Agency Limited	Die figuur getoon The figure shown		steldie padreserwe voor van 'n gedeelte represents the road reserve of a portion	
			van Nasionale Roete R571 of National Route	Seksie 1 Section
			Vel Sheet 9 of 13	Plan P804/12



<p>Die Suid Afrikaanse Nasionale Padagentskap Beperk The South African National Roads Agency Limited</p>	<p>Die figuur getoon The figure shown</p> 	<p>steldie padreserwe voor van 'n gedeelte represents the road reserve of a portion van Nasionale Roete R571 of National Route R571 Section</p> <p style="text-align: center;">1</p>	<p>Vel 10 van 13 Plan P804/12</p>
--	---	--	---------------------------------------

PADRESERWE KOÖRDINATE / ROAD RESERVE CO-ORDINATES						
LINKERKANT/LEFT HAND SIDE			REGTERKANT/RIGHT HAND SIDE			
	Y	X	WG 27°	Y	X	
L1	-76 307.31	2 869 467.90		R1	-76 340.66	2 869 491.56
L2	-76 486.54	2 869 078.29		R2	-76 522.21	2 869 092.27
L3	-76 532.08	2 868 996.83		R3	-76 566.60	2 869 018.90
L4	-76 577.70	2 868 947.43		R4	-76 607.17	2 868 969.29
L5	-76 613.03	2 868 912.93		R5	-76 638.38	2 868 939.92
L6	-77 270.27	2 868 319.34		R6	-77 298.68	2 868 347.57
L7	-77 578.90	2 868 044.16		R7	-77 605.32	2 868 067.63
L8	-78 635.16	2 867 084.52		R8	-78 662.75	2 867 109.84
L9	-78 974.06	2 866 774.97		R9	-78 999.23	2 866 804.09
L10	-79 185.07	2 866 583.57		R10	-79 210.29	2 866 612.14
L11	-79 758.53	2 866 061.06		R11	-79 784.65	2 866 092.13
L12	-79 865.28	2 865 945.52		R12	-79 896.50	2 865 968.78
L13	-79 961.94	2 865 816.54		R13	-80 001.36	2 865 836.98
L14	-80 071.37	2 865 633.14		R14	-80 111.47	2 865 648.19
L15	-80 127.54	2 865 519.30		R15	-80 165.67	2 865 531.35
L16	-80 179.67	2 865 374.68		R16	-80 217.50	2 865 388.51
L17	-80 506.35	2 864 241.85		R17	-80 541.35	2 864 249.95
L18	-80 552.19	2 864 087.52		R18	-80 586.30	2 864 101.91
L19	-80 651.80	2 863 820.06		R19	-80 698.94	2 863 828.93
L20	-81 121.79	2 862 570.33		R20	-81 158.96	2 862 580.56
L21	-81 644.38	2 861 192.91		R21	-81 676.85	2 861 202.32
L22	-81 864.29	2 860 602.33		R22	-81 896.24	2 860 613.17
L23	-82 264.43	2 859 549.52		R23	-82 298.04	2 859 549.24
L24	-82 787.66	2 858 166.03		R24	-82 823.28	2 858 166.25
L25	-83 323.83	2 856 744.47		R25	-83 361.88	2 856 745.31
L26	-83 393.98	2 856 554.46		R26	-83 425.51	2 856 568.44
L27	-83 430.94	2 856 452.96		R27	-83 464.51	2 856 461.96
L28	-83 457.33	2 856 374.17		R28	-83 485.80	2 856 383.63
L29	-83 477.90	2 856 273.11		R29	-83 510.76	2 856 284.75
L30	-83 497.00	2 856 174.54		R30	-83 530.88	2 856 179.32
L31	-83 662.01	2 855 149.03		R31	-83 695.43	2 855 153.75
L32	-84 051.39	2 852 685.83		R32	-84 081.98	2 852 688.60
L33	-84 237.87	2 851 511.97		R33	-84 267.43	2 851 513.52
L34	-84 412.72	2 850 384.58		R34	-84 443.55	2 850 387.00
L35	-84 596.35	2 849 187.52		R35	-84 628.33	2 849 190.11
L36	-84 804.39	2 847 837.25		R36	-84 836.23	2 847 838.68
L37	-84 954.43	2 846 863.65		R37	-84 978.53	2 846 914.52
L38	-85 137.70	2 845 682.55		R38	-85 170.78	2 845 669.08
L39	-85 624.84	2 842 517.18		R39	-85 651.59	2 842 559.13
L40	-85 683.70	2 842 130.94		R40	-85 716.11	2 842 135.74
L41	-85 750.48	2 841 664.86		R41	-85 778.73	2 841 628.90
L42	-85 746.28	2 841 665.10		R42	-85 783.51	2 841 628.12
L43	-85 862.21	2 840 871.16		R43	-86 085.16	2 839 560.73
L44	-85 867.74	2 840 871.51		R44	-86 178.65	2 838 816.36
L45	-85 909.69	2 840 570.48		R45	-86 251.15	2 838 294.19
L46	-85 906.55	2 840 567.46		R46	-86 451.99	2 836 946.88
L47	-85 990.04	2 839 994.40		R47	-86 691.48	2 835 341.66
L48	-85 985.10	2 839 993.67		R48	-86 859.89	2 834 218.40
L49	-86 147.02	2 838 778.70		R49	-86 991.03	2 833 335.90
L50	-86 203.16	2 838 364.45		R50	-87 009.50	2 833 257.08
L51	-86 419.50	2 836 911.18		R51	-87 051.34	2 833 146.25

Vel	11	Van	13	P805/12
Sheet		of		

PADRESERWE KOÖRDINATE / ROAD RESERVE CO-ORDINATES						
LINKERKANT/LEFT HAND SIDE			REGTERKANT/RIGHT HAND SIDE			
	Y	X	WG 27°	Y	X	
L52	-86 660.46	2 835 314.09		R52	-87 101.70	2 833 063.06
L53	-86 823.30	2 834 203.12		R53	-87 155.53	2 832 998.63
L54	-86 951.19	2 833 347.50		R54	-87 198.94	2 832 957.58
L55	-86 969.72	2 833 249.98		R55	-87 255.92	2 832 913.34
L56	-87 003.28	2 833 154.46		R56	-88 407.35	2 832 142.37
L57	-87 025.54	2 833 110.47		R57	-88 757.98	2 831 909.96
L58	-87 051.85	2 833 067.77		R58	-89 860.88	2 831 173.76
L59	-87 112.27	2 832 987.49		R59	-90 206.69	2 830 938.40
L60	-87 168.68	2 832 933.22		R60	-90 300.32	2 830 866.57
L61	-87 237.27	2 832 878.51		R61	-90 450.61	2 830 736.80
L62	-88 359.95	2 832 129.75		R62	-90 481.69	2 830 708.24
L63	-88 716.47	2 831 891.37		R63	-91 142.27	2 830 100.67
L64	-89 813.21	2 831 162.07		R64	-92 044.33	2 829 271.27
L65	-90 084.22	2 830 982.03		R65	-92 837.20	2 828 543.97
L66	-90 213.03	2 830 889.18		R66	-93 828.53	2 827 634.85
L67	-90 412.87	2 830 721.86		R67	-95 388.06	2 826 211.26
L68	-91 101.47	2 830 089.76		R68	-95 444.33	2 826 160.11
L69	-92 004.84	2 829 257.93		R69	-95 871.07	2 825 771.40
L70	-92 811.29	2 828 514.52		R70	-95 996.96	2 825 656.48
L71	-92 839.27	2 828 488.73		R71	-96 104.29	2 825 548.52
L72	-93 803.36	2 827 606.33		R72	-96 167.55	2 825 475.48
L73	-95 228.35	2 826 310.01		R73	-96 190.14	2 825 448.41
L74	-95 387.76	2 826 161.07		R74	-96 253.39	2 825 368.60
L75	-95 432.04	2 826 121.94		R75	-96 344.00	2 825 228.23
L76	-95 849.48	2 825 745.34		R76	-96 416.01	2 825 102.84
L77	-95 970.84	2 825 627.83		R77	-96 607.06	2 824 705.69
L78	-96 074.29	2 825 526.06		R78	-96 939.17	2 824 015.72
L79	-96 168.04	2 825 422.20		R79	-97 354.18	2 823 157.15
L80	-96 228.64	2 825 338.69		R80	-97 411.83	2 823 032.58
L81	-96 268.34	2 825 278.99		R81	-97 452.51	2 822 943.02
L82	-96 318.39	2 825 199.59		R82	-97 585.84	2 822 595.81
L83	-96 390.00	2 825 066.43		R83	-97 603.98	2 822 550.06
L84	-96 580.59	2 824 673.72		R84	-97 653.18	2 822 431.98
L85	-96 912.55	2 823 983.58		R85	-97 720.21	2 822 281.37
L86	-97 328.65	2 823 126.31		R86	-97 754.26	2 822 193.68
L87	-97 379.53	2 823 021.04		R87	-97 777.97	2 822 104.48
L88	-97 416.31	2 822 937.82		R88	-97 792.82	2 822 009.57
L89	-97 568.68	2 822 540.55		R89	-97 789.84	2 821 866.56
L90	-97 604.41	2 822 449.53		R90	-97 737.76	2 821 414.03
L91	-97 676.03	2 822 291.50		R91	-97 717.31	2 821 303.45
L92	-97 735.26	2 822 124.23		R92	-97 695.75	2 821 223.09
L93	-97 748.53	2 822 086.29		R93	-97 561.31	2 820 674.85
L94	-97 760.35	2 821 959.83		R94	-97 541.65	2 820 590.30
L95	-97 737.64	2 821 729.03		R95	-97 412.86	2 820 033.26
L96	-97 699.68	2 821 417.87		R96	-97 378.99	2 819 827.55
L97	-97 674.08	2 821 292.03		R97	-97 355.98	2 819 668.65
L98	-97 667.23	2 821 254.59		R98	-97 334.18	2 819 463.34
L99	-97 549.53	2 820 783.08		R99	-97 315.98	2 819 314.84
L100	-97 512.92	2 820 628.11		R100	-97 305.38	2 819 204.75
L101	-97 502.77	2 820 588.17		R101	-97 187.01	2 817 804.06
L102	-97 500.37	2 820 569.01		R102	-97 180.71	2 817 507.13

Vel	12	Van	13	P805/12
Sheet		of		

PADRESERWE KOÖRDINATE / ROAD RESERVE CO-ORDINATES					
LINKERKANT/LEFT HAND SIDE			REGTERKANT/RIGHT HAND SIDE		
	Y	X	WG 27°		X
L103	-97 477.05	2 820 465.35	R103	-97 224.91	2 816 953.48
L104	-97 379.47	2 820 040.10	R104	-97 224.45	2 816 887.07
L105	-97 342.18	2 819 833.38	R105	-97 219.24	2 816 837.34
L106	-97 318.67	2 819 663.03	R106	-97 201.88	2 816 752.18
L107	-97 294.24	2 819 464.49	R107	-97 200.76	2 816 746.51
L108	-97 278.09	2 819 314.41	R108	-97 161.97	2 816 661.85
L109	-97 265.37	2 819 205.67	R109	-96 926.34	2 816 242.96
L110	-97 153.23	2 817 796.36			
L111	-97 146.92	2 817 505.54			
L112	-97 191.38	2 816 951.06			
L113	-97 185.94	2 816 843.31			
L114	-97 154.33	2 816 726.90			
L115	-97 129.70	2 816 677.31			
L116	-96 876.31	2 816 270.45			

Vel	13	Van	13	P805/12
Sheet		of		

Printed by and obtainable from the Government Printer, Bosman Street, Private Bag X85, Pretoria, 0001

Publications: Tel: (012) 748 6052, 748 6053, 748 6058

Advertisements: Tel: (012) 748 6205, 748 6208, 748 6209, 748 6210, 748 6211

Subscriptions: Tel: (012) 748 6054, 748 6055, 748 6057

Gedruk deur en verkrygbaar by die Staatsdrukker, Bosmanstraat, Privaatsak X85, Pretoria, 0001

Publikasies: Tel: (012) 748 6052, 748 6053, 748 6058

Advertensies: Tel: (012) 748 6205, 748 6208, 748 6209, 748 6210, 748 6211

Subskripsies: Tel: (012) 748 6054, 748 6055, 748 6057