



# Government Gazette Staatskoerant

REPUBLIC OF SOUTH AFRICA  
REPUBLIEK VAN SUID AFRIKA

Vol. 610

12 April  
April 2016

No. 39917

N.B. The Government Printing Works will not be held responsible for the quality of "Hard Copies" or "Electronic Files" submitted for publication purposes

ISSN 1682-5843



9 771682 584003

39917



**AIDS HELPLINE: 0800-0123-22 Prevention is the cure**

# Government Printing Works

## Notice submission deadlines

Government Printing Works has over the last few months implemented rules for completing and submitting the electronic Adobe Forms when you, the customer, submit your notice request.

In line with these business rules, GPW has revised the notice submission deadlines for all gazettes. Please refer to the GPW website [www.gpwonline.co.za](http://www.gpwonline.co.za) to familiarise yourself with the new deadlines.

### CANCELLATIONS

Don't forget!

Cancellation of notice submissions are accepted by GPW according to the deadlines stated in the table above.

Non-compliance to these deadlines will result in your request being failed. **Please pay special attention to the different deadlines for each gazette.**

**Please note that any notices cancelled after the cancellation deadline will be published and charged at full cost.**

Requests for cancellation must be sent by the original sender of the notice and must be accompanied by the relevant notice reference number (N-) in the email body.

### AMENDMENTS TO NOTICES

take note!

With effect from 01 October, GPW will not longer accept amendments to notices. The cancellation process will need to be followed and a new notice submitted thereafter for the next available publication date.

### CUSTOMER INQUIRIES



Many of our customers request immediate feedback/confirmation of notice placement in the gazette from our Contact Centre once they have submitted their notice – While GPW deems it one of their highest priorities and responsibilities to provide customers with this requested feedback and the best service at all times, we are only able to do so once we have started processing your notice submission.

GPW has a **2-working day turnaround time for processing notices** received according to the business rules and deadline submissions.

Please keep this in mind when making inquiries about your notice submission at the Contact Centre.

### PROOF OF PAYMENTS



GPW reminds you that all notice submissions **MUST** be submitted with an accompanying proof of payment (PoP) or purchase order (PO). If any PoP's or PO's are received without a notice submission, it will be failed and your notice will not be processed.

When submitting your notice request to [submit.egazette@gpw.gov.za](mailto:submit.egazette@gpw.gov.za), please ensure that a purchase order (GPW Account customer) or proof of payment (non-GPW Account customer) is included with your notice submission. All documentation relating to the notice submission must be in a single email.

A reminder that documents must be attached separately in your email to GPW. (In other words, your email should have an Adobe Form plus proof of payment/purchase order – 2 separate attachments – where notice content is applicable, it should also be a 3rd separate attachment).

### REMINDER OF THE GPW BUSINESS RULES

- Single notice, single email – with proof of payment or purchase order.
- All documents must be attached separately in your email to GPW.
- 1 notice = 1 form, i.e. each notice must be on a separate form
- Please submit your notice **ONLY ONCE**.
- Requests for information, quotations and inquiries must be sent to the Contact Centre **ONLY**.
- The notice information that you send us on the form is what we publish. Please do not put any instructions in the email body.

## Contents

<i>No.</i>		<i>Gazette No.</i>	<i>Page No.</i>
<b>GOVERNMENT NOTICES • GOEWERMENTSKENNISGEWINGS</b>			
<b>Transport, Department of/ Vervoer, Departement van</b>			
420	South African National Roads Agency Limited and National Roads Act (7/1998): Declaration amendment of National Road N1 Section 9X: Three Sisters–Richmond .....	39917	4
420	Wet op Suid-Afrikaanse Nasionale Padagentskap Beperk en Nasionale Paaie (7/1998): Verklaring wysiging van Nasionale Pad N1 Seksie 9X: Drie Susters–Richmond .....	39917	5

---

GOVERNMENT NOTICES • GOEWERMENTSKENNISGEWINGS

---

DEPARTMENT OF TRANSPORT

NO. 420

12 APRIL 2016

**THE SOUTH AFRICAN NATIONAL ROADS  
AGENCY SOC LIMITED**

Registration No: 1998/009584/30

---

**DECLARATION AMENDMENT OF NATIONAL ROAD N1 SECTION 9X**

AMENDMENT OF DECLARATION No. 1322 OF 1989

By virtue of section 40 (1)(b) of the South African National Roads Agency Limited and the National Roads Act, 1998 (Act No. 7 of 1998), I hereby amend declaration No. 1322 of 1989, Schedule paragraph (1), by substituting the section of the route from the western boundary of Portion 5 of the farm Grootklip 238 to Erf 2129 Richmond, with the subjoined sheets 1 to 22 of Plan P834/14.

**(National Road N1 Section 9X: Three Sisters – Richmond)**

---

MINISTER OF TRANSPORT

## DEPARTEMENT VAN VERVOER

NO. 420

12 APRIL 2016

**DIE SUID-AFRIKAANSE NASIONALE  
PADAGENTSKAP MSB BEPERK**

Registrasie No: 1998/009584/30

**VERKLARING WYSIGING VAN NASIONALE PAD N1 SEKSIE 9X.**

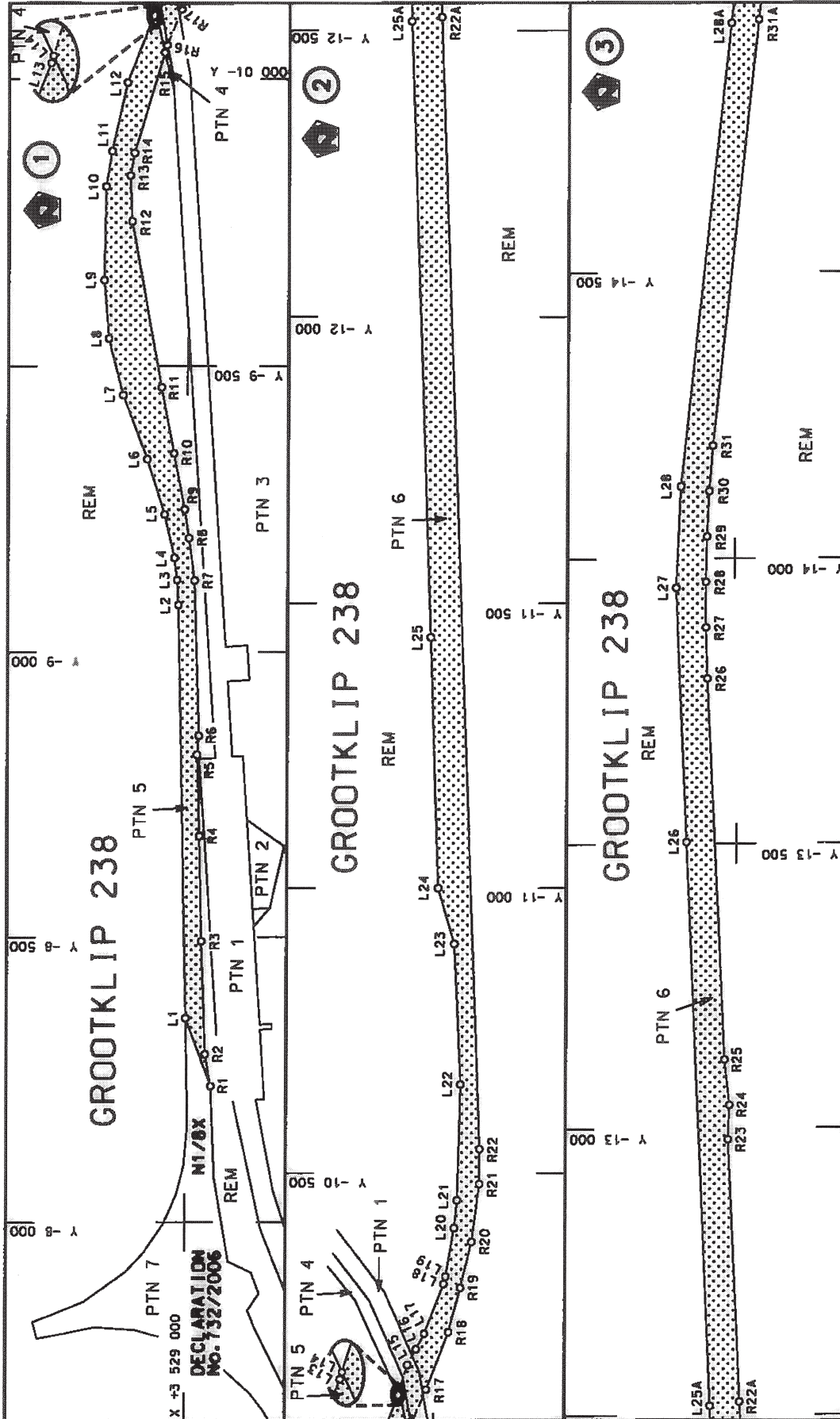
## WYSIGING VAN VERKLARING NO. 1322 VAN 1989

Kragtens Artikel 40(1)(b) van die Wet op die Suid-Afrikaanse Nasionale Padagentskap Beperk en op Nasionale Paaie, 1998 (Wet no. 7 van 1998), wysig ek hiermee verklaring No. 1322 van 1989, Bylae paragraaf (1) deur die gedeelte van die roete vanaf die westelike grens van Gedeelte 5 van die plaas Grootklip 238 tot Erf 2129 Richmond, te vervang met meegaande velle 1 tot 22 van Plan P834/14.

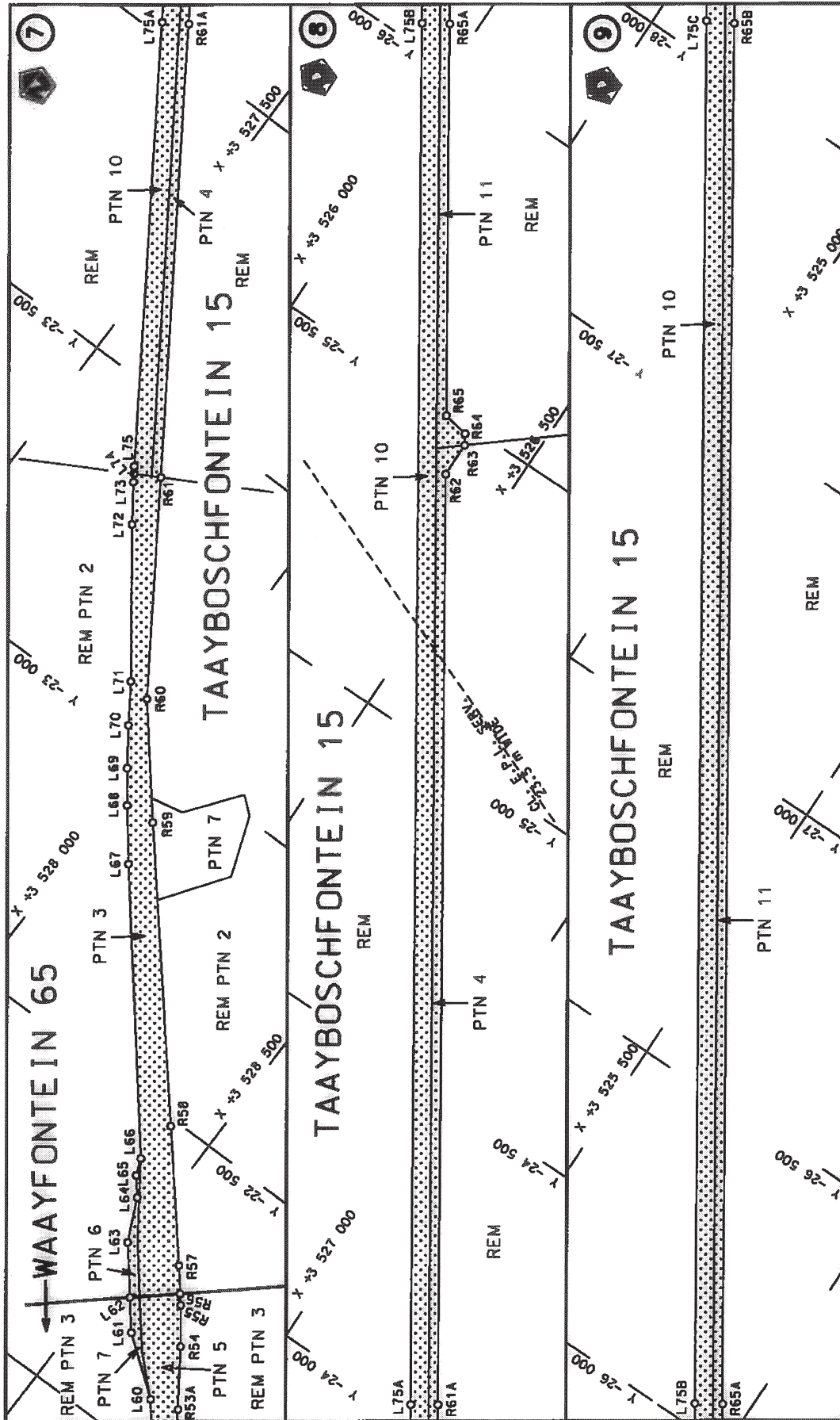
(Nasionale Pad N1 Seksie 9X: Drie Susters – Richmond)



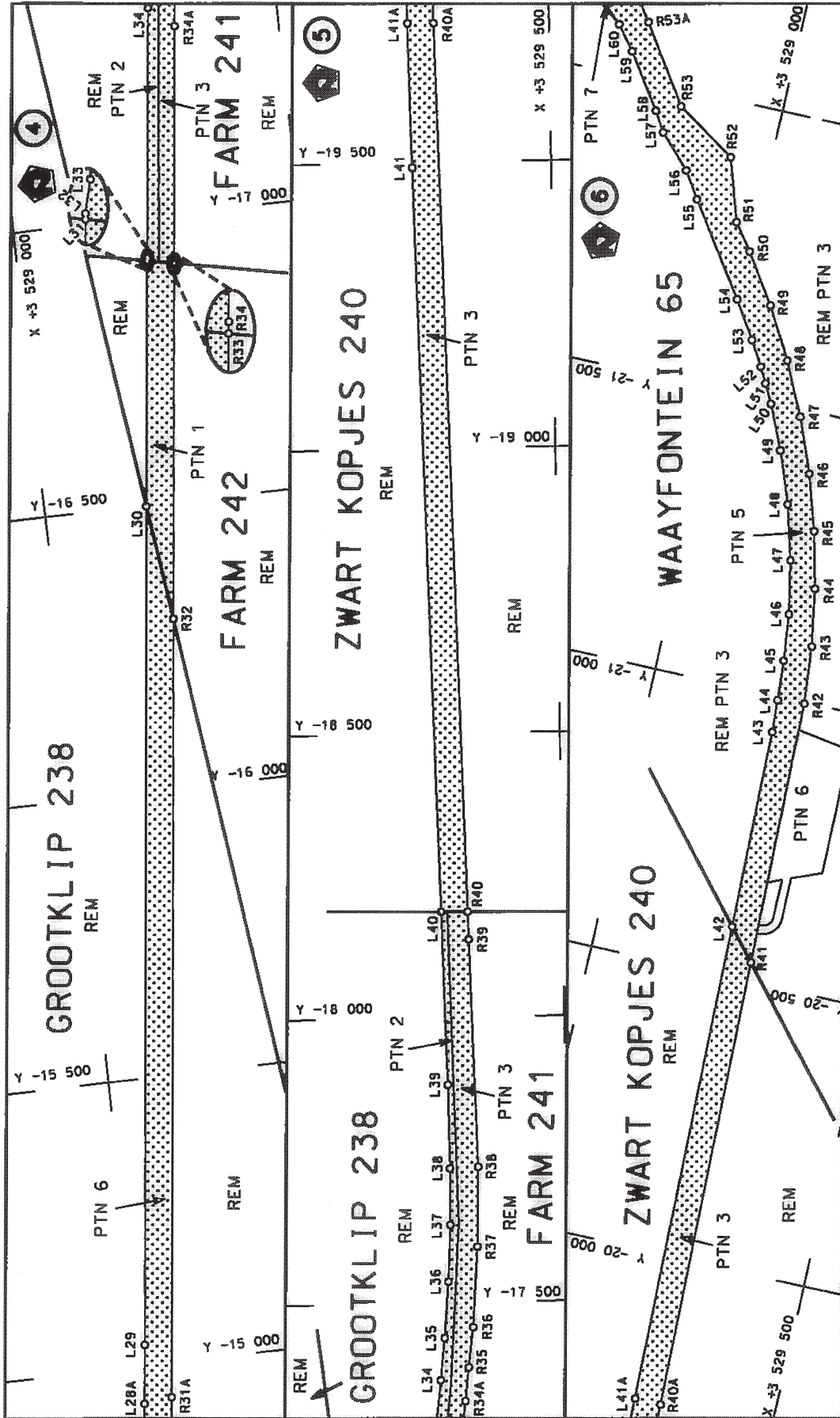
MINISTER VAN VERVOER




<p>Die Suid Afrikaanse Nasionale Padagentskap Beperk The South African National Roads Agency Limited</p>	<p>Die figuur getoon The figure shown</p>	<p>steeldie padreserwe voor van 'n gedeelte represents the road reserve of a portion van Nasionale Roete N1 Sektie of National Route N1 Section</p>
<p>Vol Sheet 1</p>	<p>9X</p>	<p>van of 22</p>
<p>Plan P834/14</p>	<p></p>	<p></p>

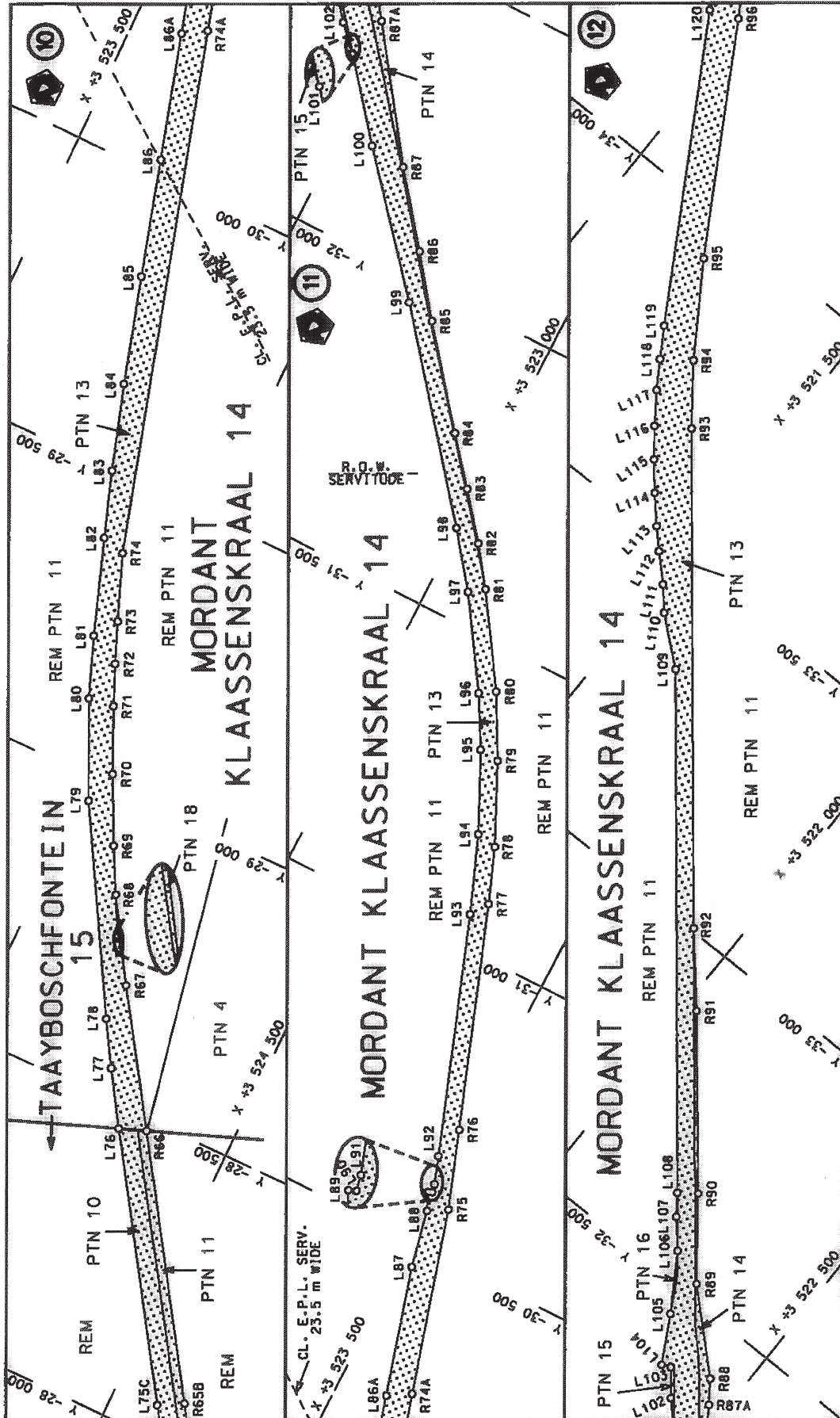


Die Suid-Afrikaanse Nasionale Padagantskap Bepperk The South African National Roads Agency Limited	Die figuur getoon The figure shown		steldie padreserwe voor van 'n gedeelte represents the road reserve of a portion van Nasionale Roete N1 of National Route	Vel Sheet 3 of 22
				Plan P834/14

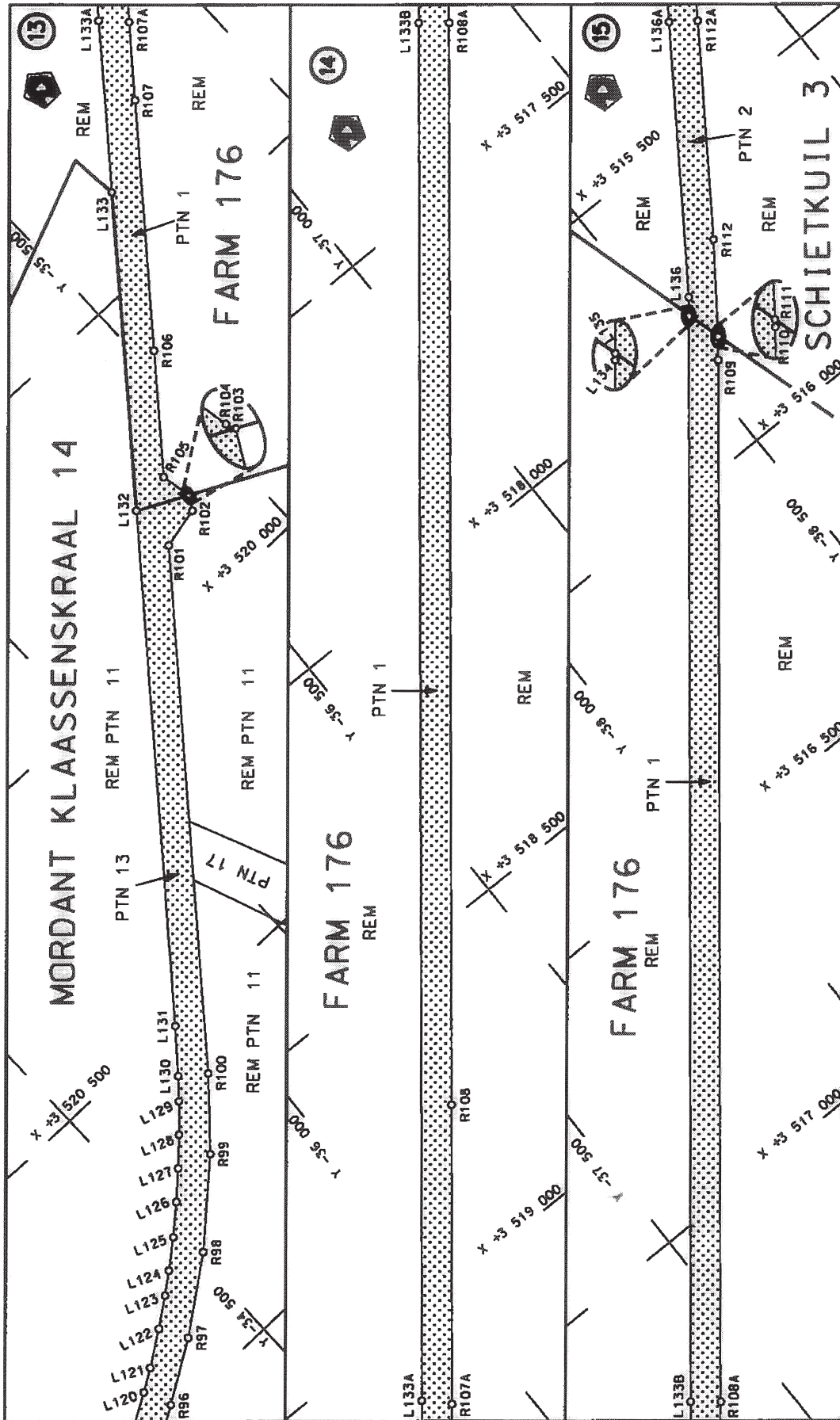


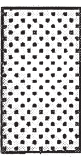
<p>Die Suid Afrikaanse Nasionale Padagentskap Beperk The South African National Roads Agency Limited</p>	<p>Die figuur getoon The figure shown</p> 	<p>stelt die padreserwe voor van 'n gedeelte represents the road reserve of a portion van Nasionale Roete N1 of National Route</p>	<p>Vel Sheet 2 of 22 Plan P834/14</p>
--	---	--	---

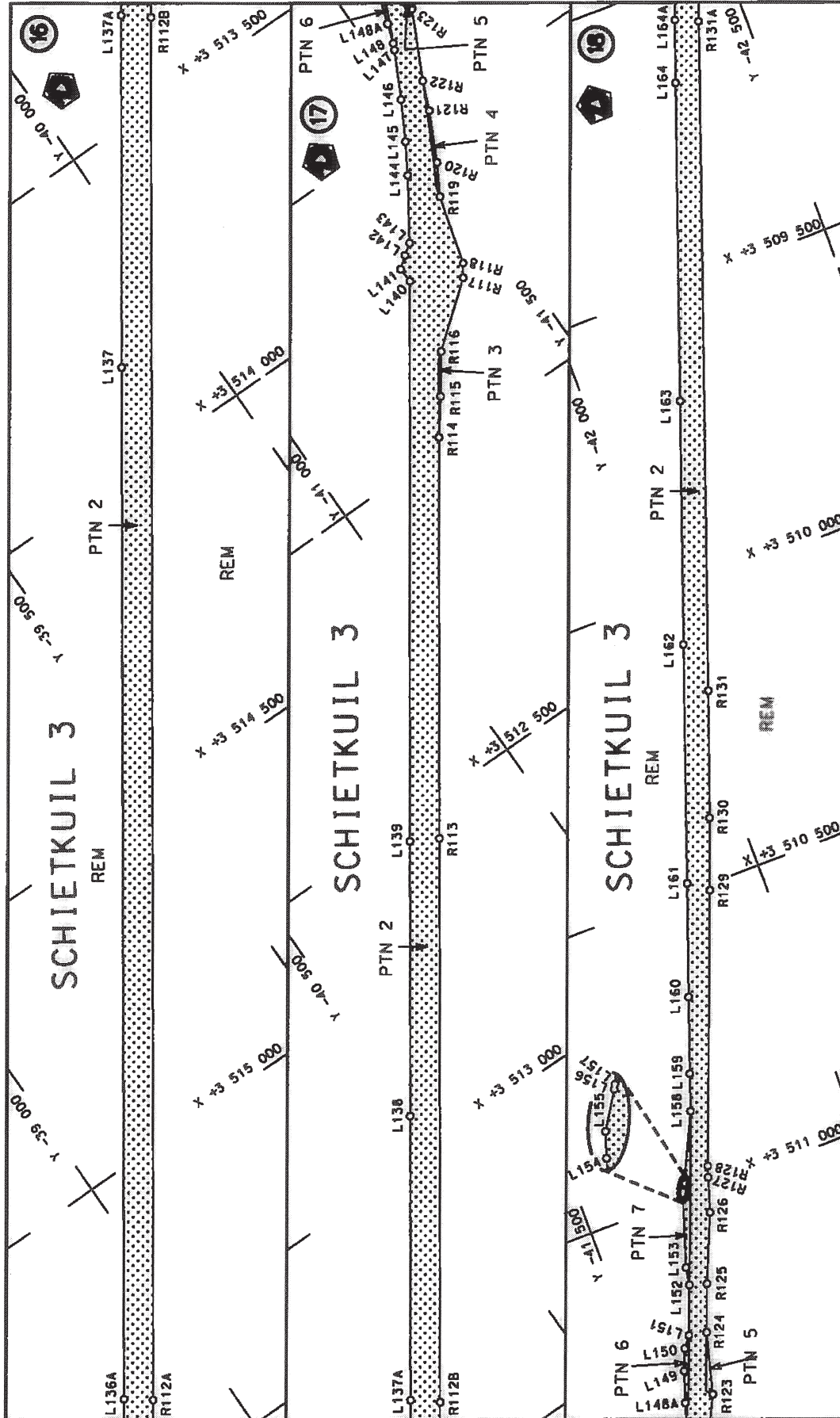


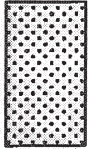


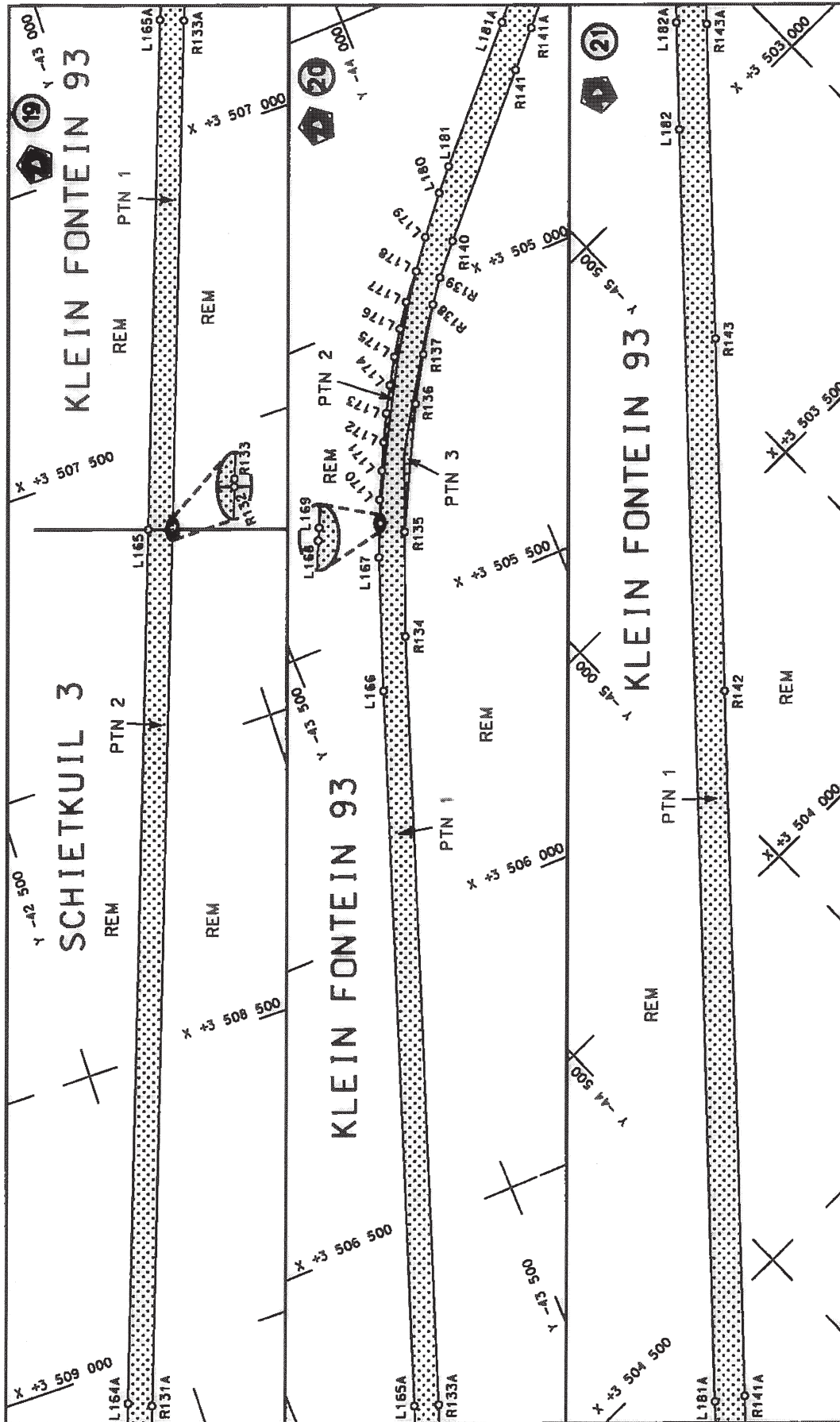
<p>Die Suid Afrikaanse Nasionale Padagentskap Beperk The South African National Roads Agency Limited</p>	<p>Die figuur getoon The figure shown</p>	<p>stelt die padreserwe voor van 'n gedeelte represents the road reserve of a portion van Nasionale Roete N1 of National Route</p>	<p>Vel Sheet 4 van of 22 Plan P834/14</p>	<p>9X</p>	<p>Sekste Section</p>
--	---	--	---	-----------	-----------------------



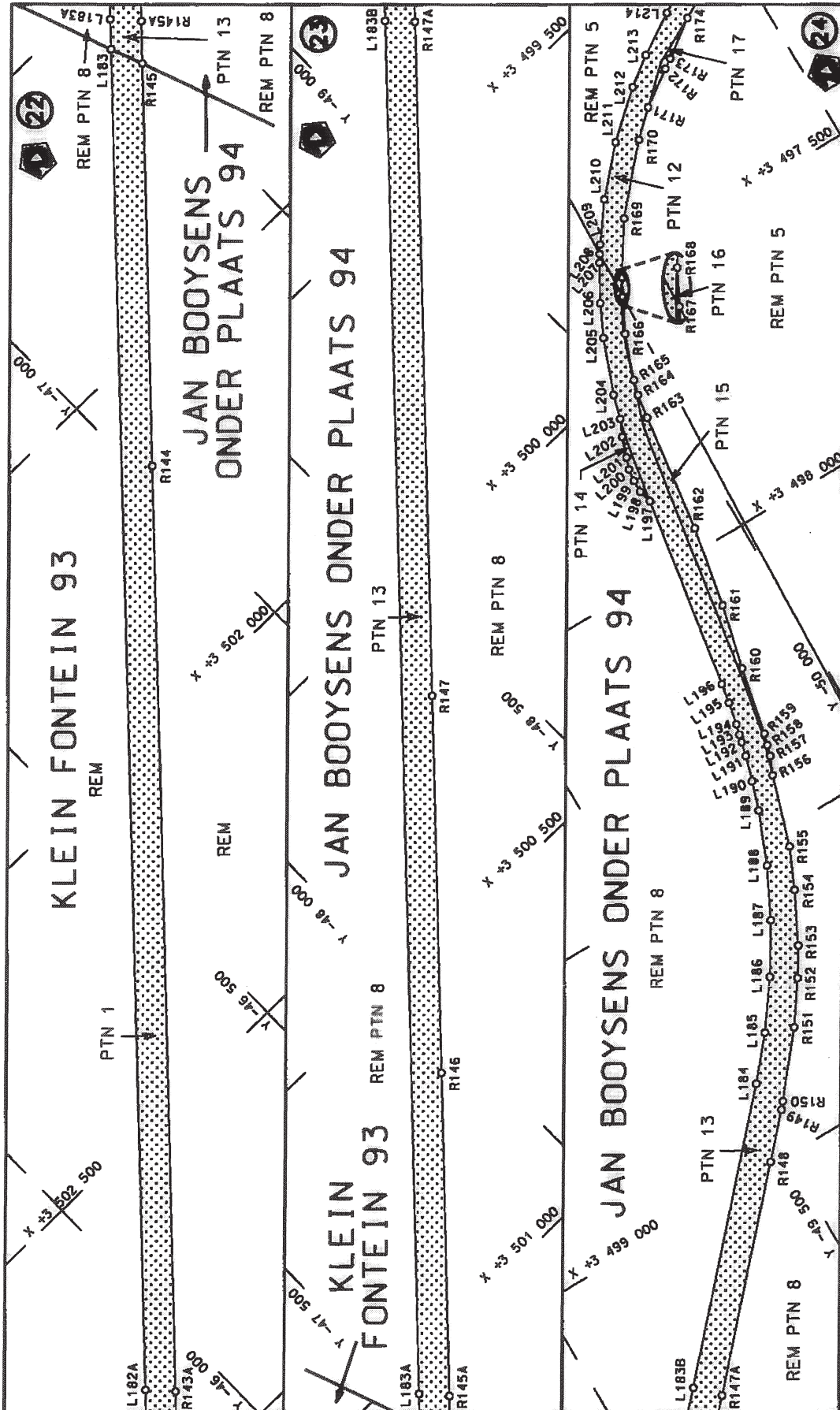
<p>Die Suid Afrikaanse Nasionale Padagantskap Bepark The South African National Roads Agency Limited</p>	<p>Die figuur getoon The figure shown</p> 	<p>steeldie padreserwe voor van 'n gedeelte represents the road reserve of a portion van Nasionale Roete N1 of National Route</p>	<p>Vel Sheet 5 van 22</p> <p>Plan P834/14</p>
--	---	---	---



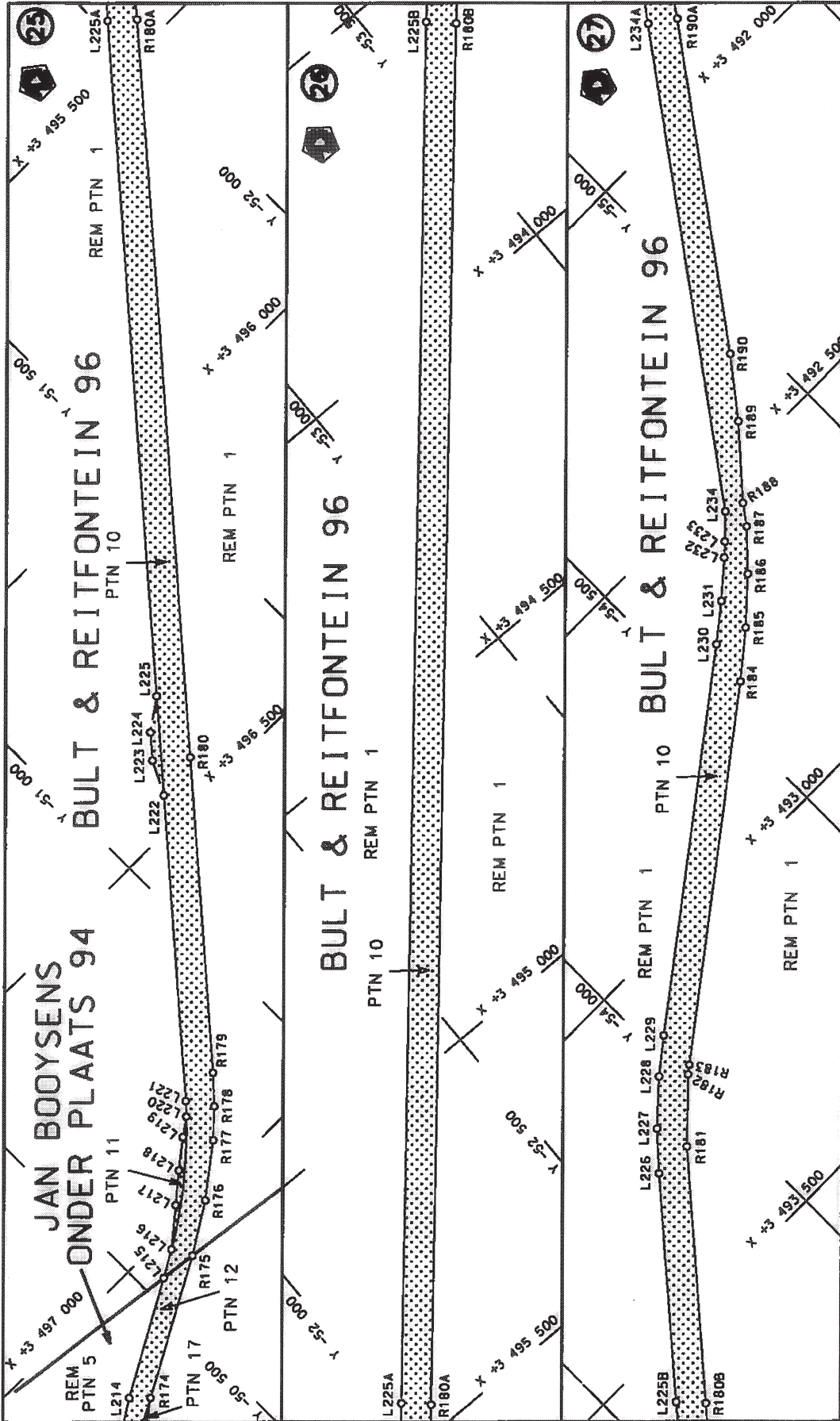
Val Sheet 6 of 22	stelsie padreserwe voor van in gedeelte represents the road reserve of a portion van Nasionale Roete N1 of National Route	 Die figuur getoon The figure shown	Die Suid Afrikaanse Nasionale Padagentskap Beperk The South African National Roads Agency Limited
Plan P834/14	Seksie Section 9X		



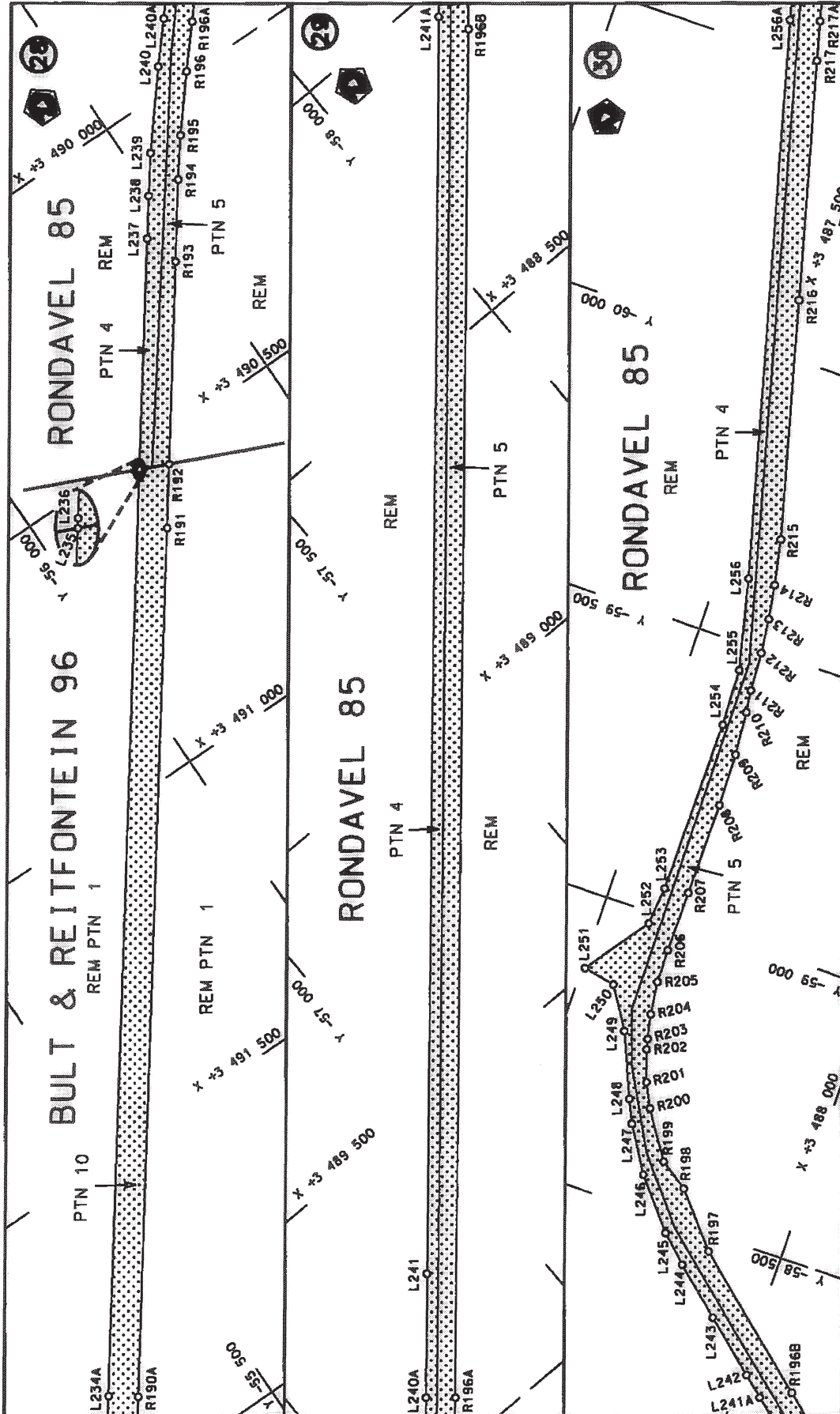
<p>Die Suid Afrikaanse Nasionale Padagentskap Bepark The South African National Roads Agency Limited</p>	<p>Die figuur getoon The figure shown</p>	<p>stelt die padreserwe voor van 'n gedeelte represents the road reserve of a portion van Nasionale Roete N1 of National Route N1</p> <p>9X</p>	<p>Val Sheet 7 of 22</p> <p>Plan P834/14</p>
--	---	---	--

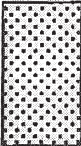


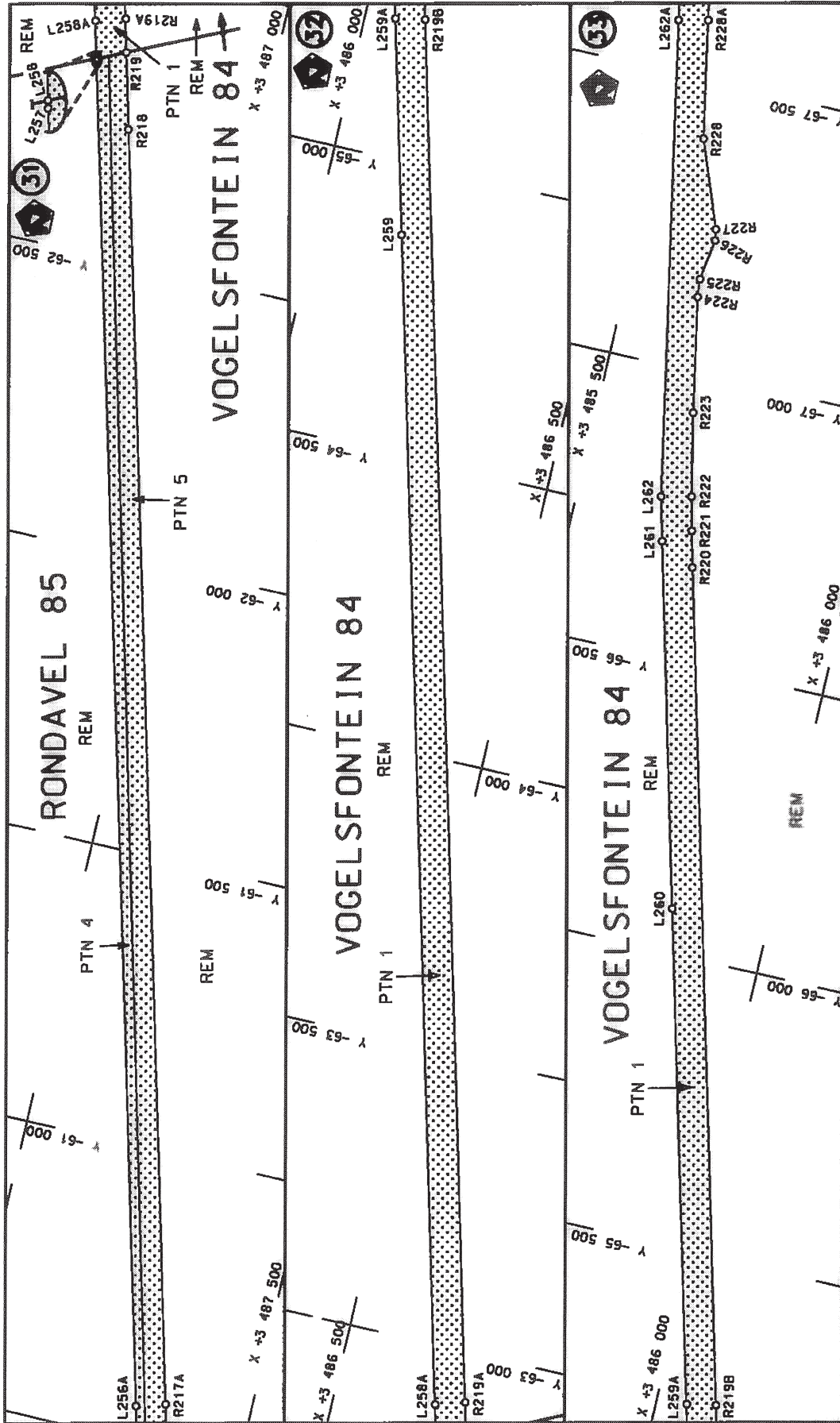
Vel Sheet 8 of 22 Plan P834/14	steldie padreserwe voor van 'n gedeelte represents the road reserve of a portion van Nasionale Roete N1 of National Route Sekte Section 9X	Die Suid Afrikaanse Nasionale Padagentskap Beperk The South African National Roads Agency Limited Die figuur getoon The figure shown
--------------------------------------	--	---

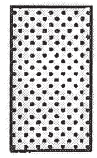


<p>Die Suid-Afrikaanse Nasionale Padagentskap Beperk The South African National Roads Agency Limited</p>	<p>Die figuur getoon The figure shown</p>	<p>stelt die padreserwe voor van 'n gedeelte represents the road reserve of a portion van Nasionale Roete N1 of National Route</p>	<p>Vel Sheet 9 of 22 Plan P834/14</p>
--	---	--	---

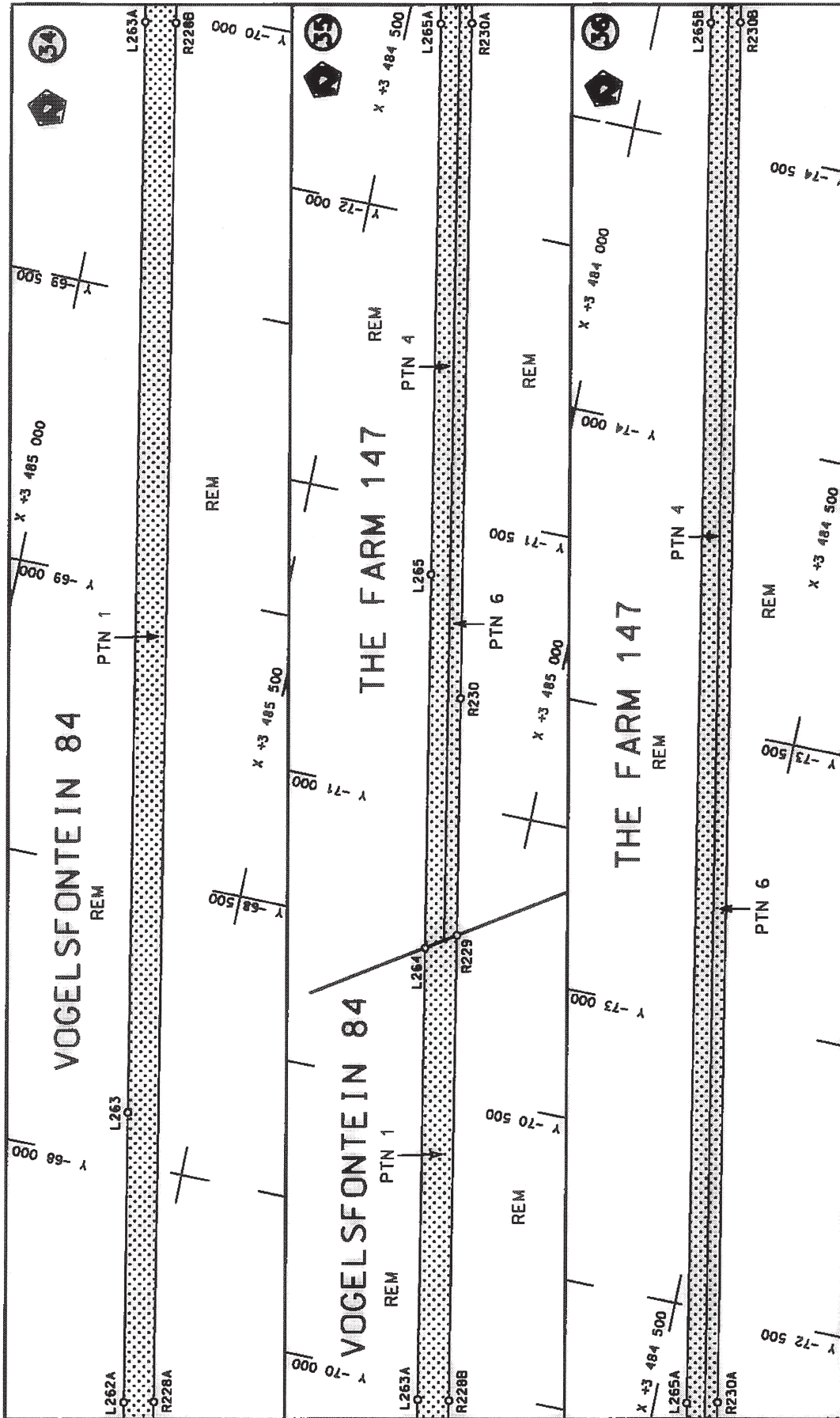


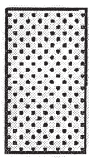
Die Suid-Afrikaanse Nasionale Paddagentskop Beperk The South African National Roads Agency Limited	Die figuur getoon The figure shown		staldie padraaswre voor van 'n gedeelte represents the road reserve of a portion van Nasionale Roete N1 of National Route N1 Section	Val Sheet 10 of 22
				Plan P834/14

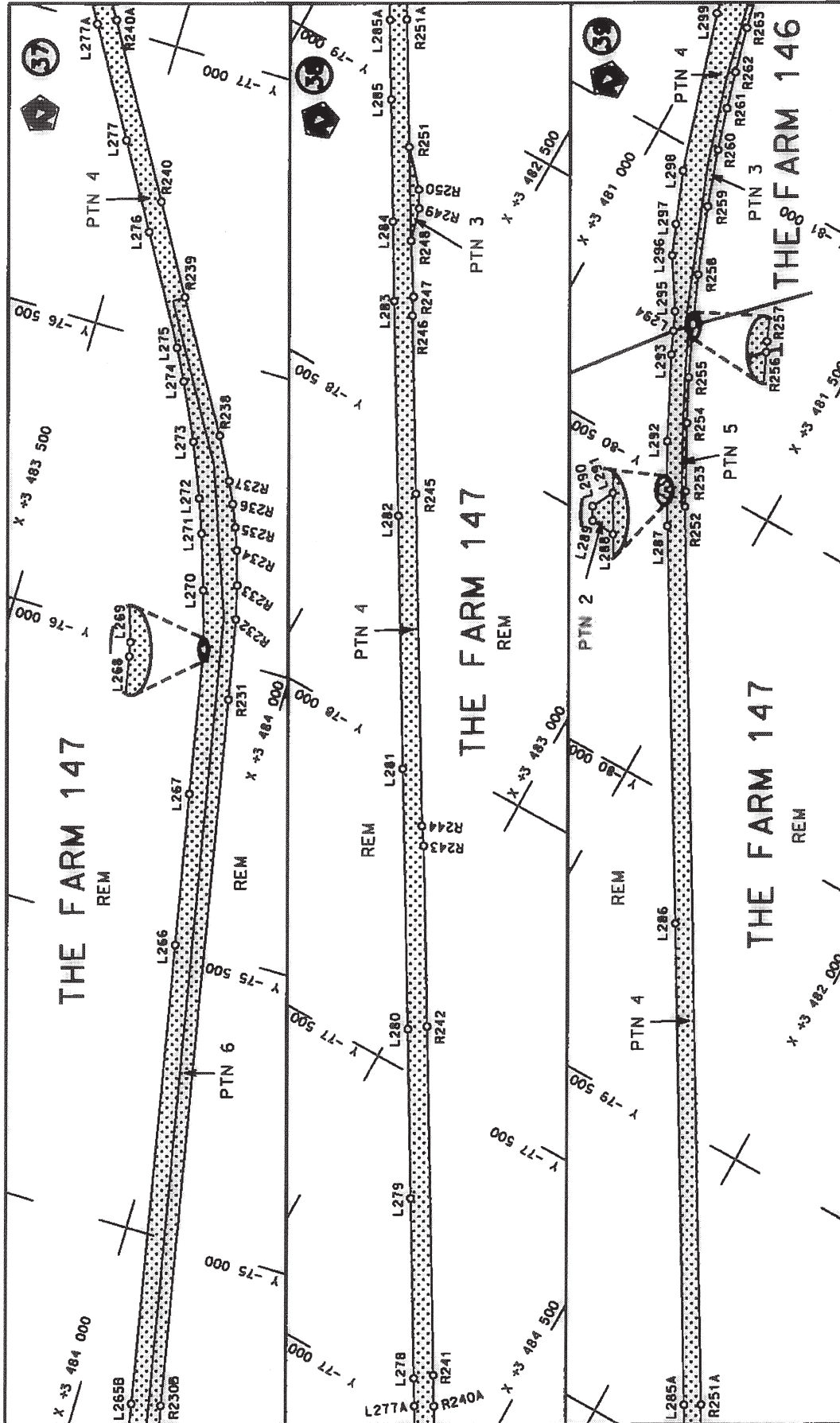


<p>Die Suid-Afrikaanse Nasionale Padoggenskap Beperk The South African National Roads Agency Limited</p>	<p>Die figuur getoon The figure shown</p> 	<p>staal die padreserwe voor van 'n gedeelte represents the road reserve of a portion van Nasionale Roete N1 of National Route</p> <p>Seksie Section</p> <p>9X</p>	<p>Vol Sheet</p> <p>11 of 22</p> <p>Plan P834/14</p>
--	---	--	--

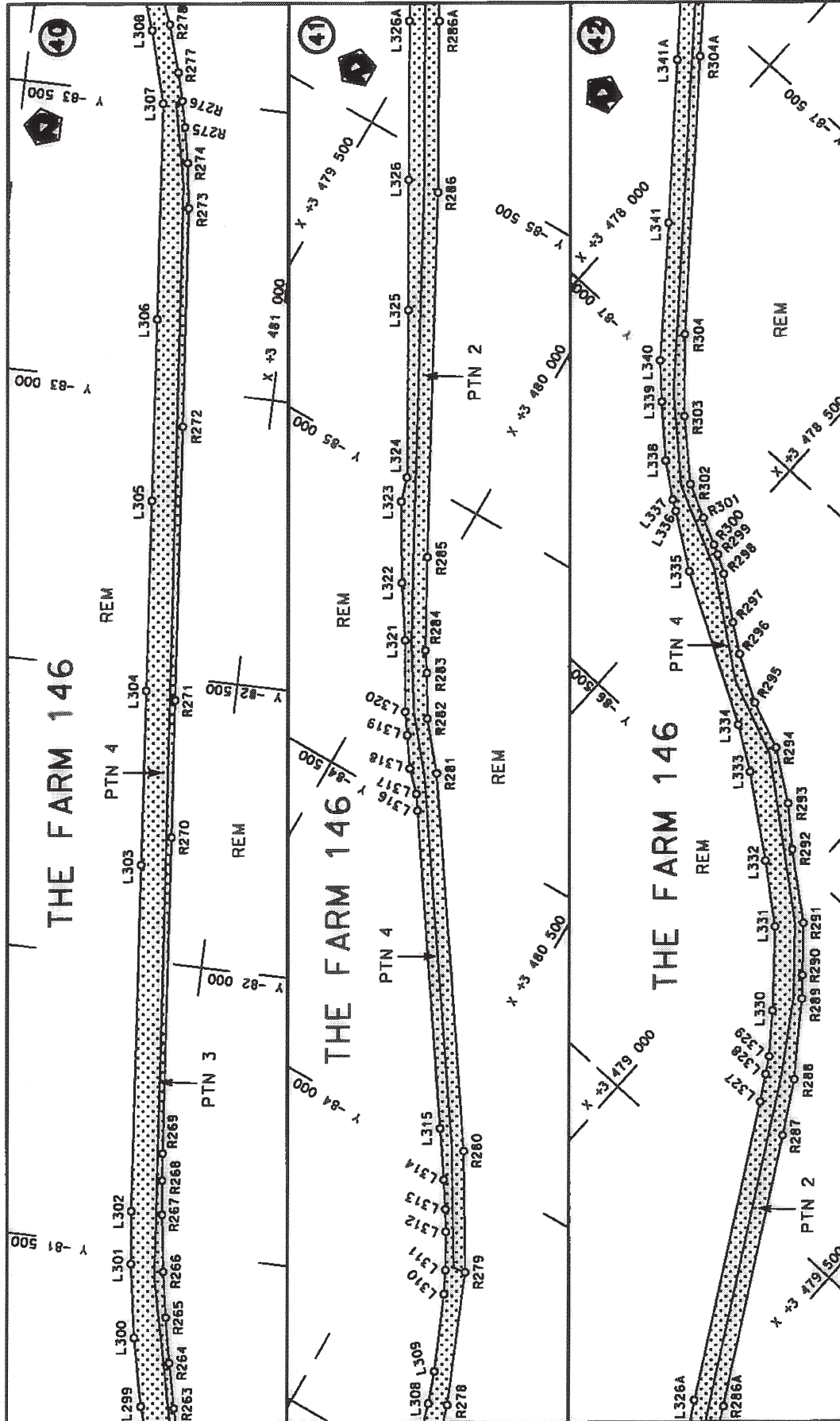


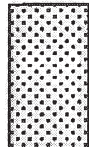


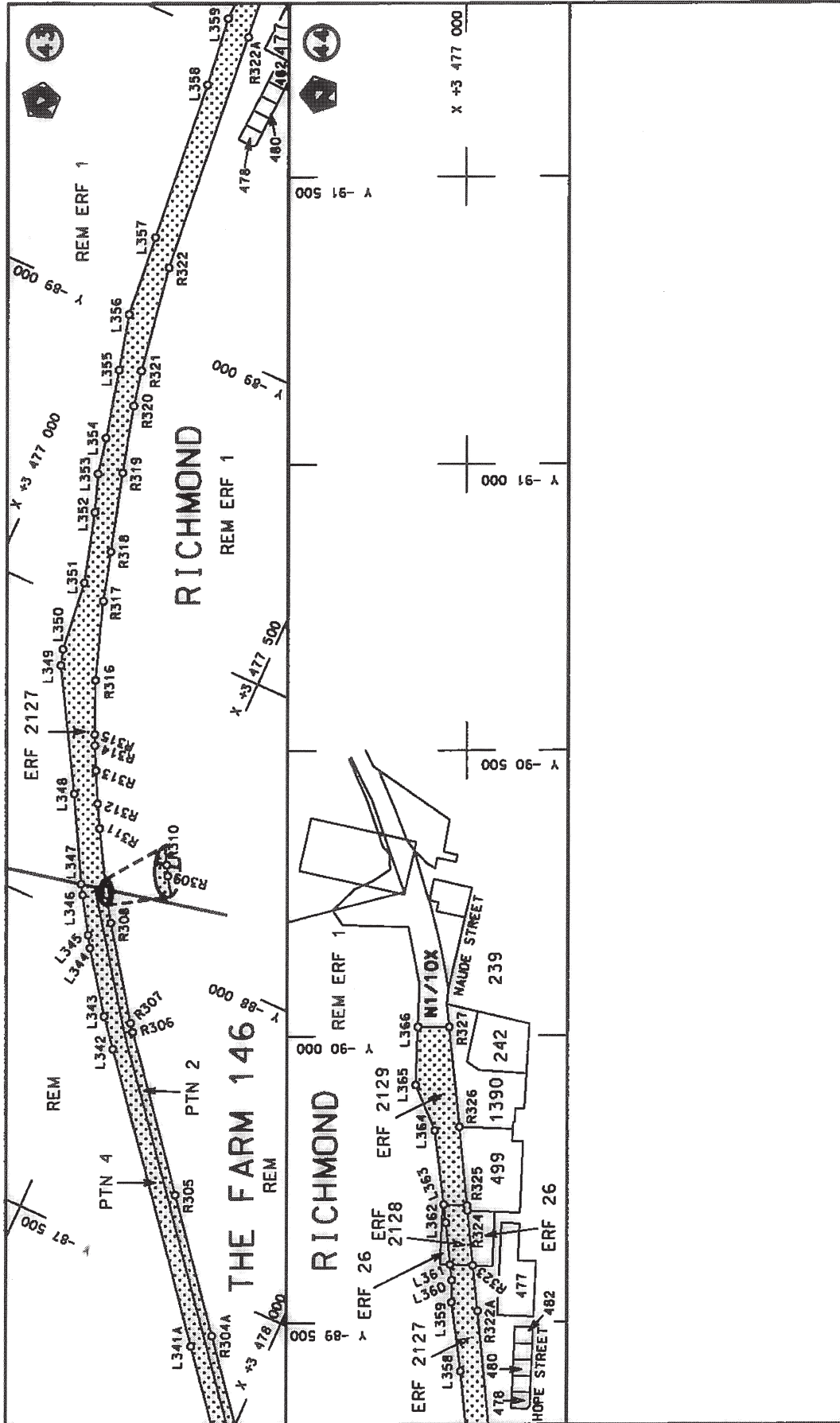
<p>Die Suid Afrikaanse Nasionale Padagentskap Beperk The South African National Roads Agency Limited</p>	<p>Die figuur getoon The figure shown</p> 	<p>steldie padreserwe voor van 'n gedeelte represents the road reserve of a portion van Nasionale Roete N1 of National Route</p> <p>Seksie 9X Section</p>	<p>Vel Sheet 12 of 22 Plan PB34/14</p>
--	---	---	--

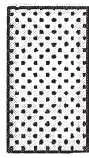


<p>Die Suid-Afrikaanse Nasionale Padagentskap Beprek The South African National Roads Agency Limited</p>	<p>Die figuur getoon The figure shown</p>	<p>staldie padreserwe voor van 'n gedeelte represents the road reserve of a portion van Nasionale Roete N1 Seksie 9X Section</p>	<p>Val van Sheet 13 of 22</p>
		<p>Plan P834/14</p>	



<p>Die Suid Afrikaanse Nasionale Padagentenskap Beperk The South African National Roads Agency Limited</p>	<p>Die figuur getoon The figure shown</p> 	<p>stelt die padreserve voor van 'n gedeelte represents the road reserve of a portion van Nasionale Roete N1 of National Route N1</p> <p>Seksie N1 Section</p>	<p>Vel van 22 Sheet 14 of Plan P834/14</p>
--	---	--	--



<p>Die Suid Afrikaanse Nasionale Padagentskap Bepark The South African National Roads Agency Limited</p>	<p>Die figuur gatoon The figure shown</p> 	<p>steeldie padreserwe voor van 'n gedeelte represents the road reserve of a portion van Nasionale Roete N1 of National Route</p> <p>Seksie Section</p> <p>N1 9X</p>	<p>Vol Sheet</p> <p>15 of</p> <p>van 22</p> <p>Plan P834/14</p>
--	---	--	---

PADRESERWE KOÖRDINATE / ROAD RESERVE CO-ORDINATES							
LINKERKANT/LEFT HAND SIDE				REGTERKANT/RIGHT HAND SIDE			
				WG 23°	Y	X	
L1	-8	357.19	3 529 000.33	R1	-8	237.87	3 529 044.69
L2	-9	082.05	3 528 984.94	R2	-8	293.60	3 529 034.34
L3	-9	126.09	3 528 982.42	R3	-8	492.35	3 529 027.36
L4	-9	164.77	3 528 977.31	R4	-8	677.05	3 529 023.24
L5	-9	240.76	3 528 959.54	R5	-8	819.81	3 529 018.60
L6	-9	337.43	3 528 929.29	R6	-8	853.14	3 529 021.71
L7	-9	449.38	3 528 887.32	R7	-9	125.03	3 529 013.14
L8	-9	548.11	3 528 862.18	R8	-9	199.17	3 529 003.24
L9	-9	649.87	3 528 853.62	R9	-9	249.50	3 528 995.62
L10	-9	813.22	3 528 856.43	R10	-9	347.33	3 528 976.03
L11	-9	874.44	3 528 866.98	R11	-9	463.08	3 528 953.65
L12	-9	994.10	3 528 893.04	R12	-9	752.26	3 528 901.96
L13	-10	110.48	3 528 937.74	R13	-9	831.65	3 528 898.66
L14	-10	113.65	3 528 938.70	R14	-9	871.37	3 528 905.61
L15	-10	165.31	3 528 954.40	R15	-10	046.94	3 528 957.53
L16	-10	192.66	3 528 969.08	R16	-10	059.93	3 528 961.37
L17	-10	219.67	3 528 983.39	R17	-10	122.45	3 528 987.30
L18	-10	306.41	3 529 016.82	R18	-10	222.27	3 529 025.83
L19	-10	319.26	3 529 020.07	R19	-10	299.41	3 529 045.86
L20	-10	403.79	3 529 034.58	R20	-10	379.47	3 529 065.35
L21	-10	452.22	3 529 039.27	R21	-10	480.55	3 529 078.10
L22	-10	655.02	3 529 044.21	R22	-10	541.51	3 529 078.06
L23	-10	901.79	3 529 032.11	R23	-12	980.43	3 528 982.88
L24	-10	999.90	3 529 002.82	R24	-13	040.47	3 528 985.45
L25	-11	439.97	3 528 987.83	R25	-13	120.17	3 528 977.45
L26	-13	503.27	3 528 912.80	R26	-13	789.66	3 528 951.13
L27	-13	948.82	3 528 897.28	R27	-13	879.42	3 528 948.91
L28	-14	126.50	3 528 906.58	R28	-13	958.97	3 528 949.24
L29	-15	036.54	3 529 010.74	R29	-14	038.44	3 528 951.63
L30	-16	498.74	3 529 176.65	R30	-14	117.95	3 528 956.22
L31	-16	925.68	3 529 225.09	R31	-14	197.18	3 528 962.73
L32	-16	926.80	3 529 225.22	R32	-16	297.31	3 529 201.30
L33	-16	933.34	3 529 226.93	R33	-16	916.10	3 529 271.61
L34	-17	365.04	3 529 275.97	R34	-16	916.35	3 529 271.64
L35	-17	438.80	3 529 283.90	R35	-17	386.53	3 529 325.07
L36	-17	536.97	3 529 291.85	R36	-17	456.50	3 529 333.63
L37	-17	635.96	3 529 296.63	R37	-17	596.89	3 529 342.97
L38	-17	735.16	3 529 297.54	R38	-17	736.66	3 529 346.25
L39	-17	881.68	3 529 295.89	R39	-18	136.77	3 529 335.84
L40	-18	186.31	3 529 288.99	R40	-18	185.42	3 529 334.72
L41	-19	491.91	3 529 258.10	R41	-20	533.35	3 529 280.96
L42	-20	587.66	3 529 234.22	R42	-20	997.72	3 529 270.32
L43	-20	936.91	3 529 226.61	R43	-21	098.37	3 529 260.96
L44	-20	993.41	3 529 223.60	R44	-21	198.05	3 529 243.47
L45	-21	063.27	3 529 218.18	R45	-21	296.25	3 529 219.44
L46	-21	144.88	3 529 208.99	R46	-21	392.55	3 529 188.39
L47	-21	237.40	3 529 190.65	R47	-21	486.34	3 529 150.52
L48	-21	332.15	3 529 163.44	R48	-21	577.18	3 529 106.18
L49	-21	421.49	3 529 129.80	R49	-21	664.61	3 529 055.39
L50	-21	497.24	3 529 095.02	R50	-21	748.20	3 528 998.58
L51	-21	529.91	3 529 077.67	R51	-21	793.35	3 528 963.87

Vel	16	Van	22	P834/14
Sheet		of		

PADRESERWE KOÖRDINATE / ROAD RESERVE CO-ORDINATES					
LINKERKANT/LEFT HAND SIDE			REGTERKANT/RIGHT HAND SIDE		
	Y	X	WG 23°		X
L52	-21 556.58	3 529 062.78	R52	-21 901.34	3 528 928.50
L53	-21 598.72	3 529 037.20	R53	-21 968.77	3 528 823.29
L54	-21 662.14	3 528 995.28	R54	-22 190.83	3 528 671.55
L55	-21 817.04	3 528 887.07	R55	-22 248.48	3 528 628.41
L56	-21 862.12	3 528 857.01	R56	-22 263.75	3 528 615.81
L57	-21 917.86	3 528 802.66	R57	-22 301.64	3 528 584.08
L58	-21 951.77	3 528 781.51	R58	-22 487.54	3 528 425.33
L59	-22 044.20	3 528 717.49	R59	-22 894.34	3 528 079.04
L60	-22 085.42	3 528 684.57	R60	-23 061.24	3 527 940.12
L61	-22 158.28	3 528 587.71	R61	-23 385.74	3 527 725.52
L62	-22 205.84	3 528 548.63	R62	-25 407.13	3 526 388.74
L63	-22 280.11	3 528 487.56	R63	-25 467.11	3 526 387.71
L64	-22 352.37	3 528 453.74	R64	-25 484.26	3 526 377.08
L65	22 382.28	3 528 428.78	R65	-25 492.55	3 526 332.28
L66	-22 410.91	3 528 417.54	R66	-28 480.47	3 524 355.99
L67	-22 810.81	3 528 088.89	R67	-28 695.30	3 524 213.83
L68	-22 891.44	3 528 025.00	R68	-28 831.66	3 524 128.60
L69	-22 943.89	3 527 985.77	R69	-28 907.63	3 524 088.31
L70	-23 005.09	3 527 942.22	R70	-29 020.67	3 524 032.70
L71	-23 069.10	3 527 899.20	R71	-29 128.81	3 523 982.92
L72	-23 290.04	3 527 735.16	R72	-29 197.05	3 523 953.47
L73	-23 350.67	3 527 692.49	R73	-29 265.79	3 523 925.42
L74	-23 362.68	3 527 684.36	R74	-29 377.69	3 523 881.89
L75	-23 373.52	3 527 677.02	R75	-30 578.97	3 523 533.66
L76	-28 463.12	3 524 310.14	R76	-30 711.24	3 523 486.30
L77	-28 553.24	3 524 252.83	R77	-31 087.13	3 523 349.94
L78	-28 627.94	3 524 207.65	R78	-31 181.34	3 523 313.69
L79	-28 960.38	3 524 014.67	R79	-31 317.94	3 523 248.88
L80	-29 122.57	3 523 937.92	R80	-31 424.65	3 523 190.79
L81	-29 225.63	3 523 898.32	R81	-31 575.51	3 523 091.49
L82	-29 388.13	3 523 841.24	R82	-31 640.83	3 523 042.99
L83	-29 499.99	3 523 803.12	R83	-31 716.83	3 522 981.70
L84	-29 645.63	3 523 756.63	R84	-31 793.72	3 522 917.79
L85	-29 828.10	3 523 703.62	R85	-31 948.91	3 522 791.99
L86	-30 026.46	3 523 646.87	R86	-32 047.11	3 522 716.85
L87	-30 460.90	3 523 522.09	R87	-32 164.74	3 522 623.77
L88	-30 559.96	3 523 501.12	R88	-32 410.87	3 522 445.52
L89	-30 590.06	3 523 487.33	R89	-32 524.31	3 522 323.04
L90	-30 593.00	3 523 494.05	R90	-32 648.56	3 522 225.74
L91	-30 606.88	3 523 491.16	R91	-32 895.13	3 522 021.63
L92	-30 654.04	3 523 474.83	R92	-33 004.85	3 521 925.80
L93	-31 056.47	3 523 329.15	R93	-33 683.45	3 521 371.00
L94	-31 187.50	3 523 277.31	R94	-33 777.91	3 521 298.48
L95	-31 321.54	3 523 212.70	R95	-33 927.22	3 521 200.68
L96	-31 408.01	3 523 164.08	R96	-34 290.26	3 520 983.96
L97	-31 557.22	3 523 065.97	R97	-34 392.63	3 520 919.67
L98	-31 647.64	3 522 996.38	R98	-34 513.40	3 520 828.02
L99	-31 959.96	3 522 741.33	R99	-34 639.11	3 520 710.94
L100	-32 172.60	3 522 557.71	R100	-34 732.66	3 520 604.91
L101	-32 300.86	3 522 453.09	R101	-35 313.64	3 519 878.77
L102	-32 341.57	3 522 413.10	R102	-35 385.36	3 519 862.80

Vel	17	Van	22	P834/14
Sheet		of		

PADRESERWE KOÖRDINATE / ROAD RESERVE CO-ORDINATES						
LINKERKANT/LEFT HAND SIDE				REGTERKANT/RIGHT HAND SIDE		
	Y	X	WG 23°		Y	X
L103	-32 383.21	3 522	378.99	R103	-35 398.70	3 519 838.40
L104	-32 376.06	3 522	363.85	R104	-35 398.67	3 519 838.33
L105	-32 455.05	3 522	319.86	R105	-35 388.61	3 519 784.90
L106	-32 548.06	3 522	260.29	R106	-35 526.86	3 519 612.07
L107	-32 592.85	3 522	221.02	R107	-35 800.22	3 519 269.87
L108	-32 626.62	3 522	196.11	R108	-36 212.81	3 518 753.84
L109	-33 338.33	3 521	614.68	R109	-38 535.62	3 515 848.15
L110	-33 402.63	3 521	536.34	R110	-38 560.76	3 515 816.36
L111	-33 440.19	3 521	503.82	R111	-38 562.03	3 515 814.63
L112	-33 480.87	3 521	461.57	R112	-38 661.21	3 515 679.04
L113	-33 512.25	3 521	430.77	R113	-40 813.84	3 512 559.95
L114	-33 555.62	3 521	391.39	R114	-41 213.15	3 511 981.40
L115	-33 600.40	3 521	353.49	R115	-41 256.52	3 511 924.36
L116	-33 646.45	3 521	317.64	R116	-41 301.99	3 511 860.45
L117	-33 697.38	3 521	280.94	R117	-41 406.95	3 511 777.08
L118	-33 742.89	3 521	251.07	R118	-41 421.29	3 511 756.03
L119	-33 792.75	3 521	220.24	R119	-41 453.69	3 511 637.33
L120	-34 270.89	3 520	935.60	R120	-41 483.79	3 511 585.28
L121	-34 308.01	3 520	912.05	R121	-41 523.97	3 511 503.18
L122	-34 365.40	3 520	872.26	R122	-41 544.20	3 511 453.76
L123	-34 412.61	3 520	837.27	R123	-41 600.44	3 511 339.10
L124	-34 447.30	3 520	809.95	R124	-41 628.22	3 511 233.84
L125	-34 492.52	3 520	772.61	R125	-41 658.52	3 511 154.89
L126	-34 538.43	3 520	731.20	R126	-41 706.88	3 511 040.08
L127	-34 580.96	3 520	690.60	R127	-41 725.56	3 510 981.54
L128	-34 622.18	3 520	648.60	R128	-41 731.96	3 510 962.87
L129	-34 662.07	3 520	605.33	R129	-41 905.17	3 510 510.70
L130	-34 690.95	3 520	572.00	R130	-41 949.40	3 510 391.70
L131	-34 747.17	3 520	504.04	R131	-42 025.62	3 510 181.74
L132	-35 314.01	3 519	795.71	R132	-42 939.60	3 507 637.40
L133	-35 661.69	3 519	359.93	R133	-42 939.99	3 507 636.33
L134	-38 543.54	3 515	755.65	R134	-43 694.95	3 505 534.82
L135	-38 544.84	3 515	754.04	R135	-43 762.98	3 505 364.77
L136	-38 564.35	3 515	729.74	R136	-43 865.26	3 505 165.25
L137	-39 863.55	3 513	845.22	R137	-43 910.60	3 505 090.45
L138	-40 494.30	3 512	931.28	R138	-43 958.89	3 505 016.80
L139	-40 768.52	3 512	534.25	R139	-43 988.00	3 504 977.97
L140	-41 326.67	3 511	728.02	R140	-44 032.32	3 504 927.57
L141	-41 324.94	3 511	701.58	R141	-44 247.27	3 504 693.51
L142	-41 345.15	3 511	686.03	R142	-45 133.69	3 503 725.17
L143	-41 364.10	3 511	673.16	R143	-45 550.62	3 503 271.70
L144	-41 428.64	3 511	573.97	R144	-47 024.34	3 501 663.42
L145	-41 458.70	3 511	523.50	R145	-47 502.27	3 501 142.86
L146	-41 494.20	3 511	458.85	R146	-47 936.99	3 500 669.06
L147	-41 534.26	3 511	380.56	R147	-48 387.59	3 500 177.20
L148	-41 539.04	3 511	369.92	R148	-49 470.85	3 498 993.65
L149	-41 567.80	3 511	283.02	R149	-49 534.06	3 498 924.19
L150	-41 582.35	3 511	246.72	R150	-49 543.83	3 498 912.68
L151	-41 597.32	3 511	227.80	R151	-49 627.57	3 498 810.35
L152	-41 628.86	3 511	145.83	R152	-49 676.86	3 498 738.55
L153	-41 633.90	3 511	115.55	R153	-49 706.96	3 498 689.90

Vel	18	Van	22	P834/14
Sheet		of		

PADRESERWE KOÖRDINATE / ROAD RESERVE CO-ORDINATES									
LINKERKANT/LEFT HAND SIDE				REGTERKANT/RIGHT HAND SIDE					
				WG 23°	Y	X			
L154	-41	672.93	3 510	995.86	R154	-49	752.05	3 498	601.74
L155	-41	675.38	3 510	988.40	R155	-49	783.86	3 498	531.21
L156	-41	682.09	3 510	977.80	R156	-49	822.42	3 498	407.81
L157	-41	682.78	3 510	976.46	R157	-49	836.48	3 498	376.79
L158	-41	737.35	3 510	862.17	R158	-49	841.63	3 498	357.14
L159	-41	759.26	3 510	800.23	R159	-49	847.65	3 498	337.24
L160	-41	804.56	3 510	673.44	R160	-49	873.52	3 498	217.46
L161	-41	872.30	3 510	485.35	R161	-49	899.91	3 498	103.91
L162	-42	013.54	3 510	090.42	R162	-49	927.15	3 497	961.41
L163	-42	157.84	3 509	689.08	R163	-49	954.00	3 497	750.31
L164	-42	345.17	3 509	166.98	R164	-49	960.62	3 497	708.04
L165	-42	899.34	3 507	623.95	R165	-49	967.72	3 497	681.61
L166	-43	623.83	3 505	608.43	R166	-49	995.86	3 497	604.12
L167	-43	705.07	3 505	389.32	R167	-50	025.84	3 497	546.24
L168	-43	728.68	3 505	335.76	R168	-50	041.69	3 497	515.95
L169	-43	729.92	3 505	333.21	R169	-50	097.52	3 497	429.29
L170	-43	744.40	3 505	296.15	R170	-50	190.73	3 497	323.69
L171	-43	767.00	3 505	250.69	R171	-50	233.79	3 497	283.21
L172	-43	788.86	3 505	205.72	R172	-50	294.46	3 497	240.78
L173	-43	812.35	3 505	161.15	R173	-50	311.02	3 497	229.64
L174	-43	836.67	3 505	117.95	R174	-50	373.59	3 497	183.56
L175	-43	862.58	3 505	074.91	R175	-50	600.37	3 497	060.62
L176	-43	889.94	3 505	033.78	R176	-50	683.98	3 497	007.96
L177	-43	917.35	3 504	994.75	R177	-50	767.96	3 496	943.36
L178	-43	953.97	3 504	951.73	R178	-50	811.01	3 496	902.37
L179	-43	991.14	3 504	903.09	R179	-50	850.86	3 496	859.46
L180	-44	042.57	3 504	841.13	R180	-51	212.75	3 496	438.23
L181	-44	075.25	3 504	804.39	R181	-53	920.67	3 493	284.29
L182	-45	759.10	3 502	966.25	R182	-54	011.13	3 493	196.45
L183	-47	481.19	3 501	086.67	R183	-54	024.48	3 493	186.18
L184	-49	519.62	3 498	861.87	R184	-54	562.09	3 492	772.84
L185	-49	578.70	3 498	792.30	R185	-54	635.38	3 492	712.96
L186	-49	636.66	3 498	712.36	R186	-54	704.13	3 492	649.00
L187	-49	688.81	3 498	626.63	R187	-54	761.38	3 492	588.54
L188	-49	732.50	3 498	539.88	R188	-54	785.54	3 492	554.84
L189	-49	769.78	3 498	448.44	R189	-54	880.56	3 492	447.83
L190	-49	786.72	3 498	398.05	R190	-54	953.48	3 492	354.44
L191	-49	799.50	3 498	354.30	R191	-56	196.17	3 490	636.95
L192	-49	805.95	3 498	329.51	R192	-56	262.06	3 490	545.90
L193	-49	809.39	3 498	316.08	R193	-56	469.87	3 490	258.71
L194	-49	813.90	3 498	296.77	R194	-56	553.88	3 490	142.54
L195	-49	821.95	3 498	258.01	R195	-56	600.49	3 490	080.57
L196	-49	827.92	3 498	223.12	R196	-56	672.13	3 489	993.97
L197	-49	883.05	3 497	879.47	R197	-58	470.19	3 487	875.57
L198	-49	877.20	3 497	856.43	R198	-58	559.86	3 487	797.61
L199	-49	877.11	3 497	834.25	R199	-58	592.69	3 487	748.22
L200	-49	879.89	3 497	812.66	R200	-58	673.48	3 487	694.43
L201	-49	887.09	3 497	792.16	R201	-58	714.82	3 487	673.68
L202	-49	899.06	3 497	756.90	R202	-58	769.51	3 487	654.67
L203	-49	912.31	3 497	728.02	R203	-58	787.51	3 487	650.66
L204	-49	923.82	3 497	685.70	R204	-58	830.46	3 487	641.24

Vel	19	Van	22	P834/14
Sheet		of		



PADRESERWE KOÖRDINATE / ROAD RESERVE CO-ORDINATES						
LINKERKANT/LEFT HAND SIDE			REGTERKANT/RIGHT HAND SIDE			
	Y	X	WG 23°		Y	X
L205	-49 959.31	3 497	590.45	R205	-58 888.15	3 487 634.21
L206	-49 985.65	3 497	535.22	R206	-58 946.64	3 487 632.86
L207	-50 020.80	3 497	473.44	R207	-59 054.31	3 487 634.38
L208	-50 028.88	3 497	460.83	R208	-59 217.54	3 487 635.99
L209	-50 037.90	3 497	446.77	R209	-59 311.24	3 487 633.81
L210	-50 085.05	3 497	382.41	R210	-59 388.21	3 487 627.34
L211	-50 152.96	3 497	306.55	R211	-59 426.89	3 487 622.33
L212	-50 228.38	3 497	238.86	R212	-59 495.00	3 487 618.04
L213	-50 277.09	3 497	202.08	R213	-59 555.21	3 487 610.59
L214	-50 347.03	3 497	157.30	R214	-59 615.03	3 487 600.69
L215	-50 536.69	3 497	051.72	R215	-59 694.31	3 487 584.54
L216	-50 581.82	3 497	026.59	R216	-60 100.63	3 487 476.58
L217	-50 641.51	3 496	977.04	R217	-60 506.25	3 487 368.48
L218	-50 688.00	3 496	938.00	R218	-62 727.16	3 486 776.21
L219	-50 734.25	3 496	901.87	R219	-62 857.11	3 486 741.59
L220	-50 763.64	3 496	880.59	R220	-66 666.87	3 485 726.12
L221	-50 782.24	3 496	860.45	R221	-66 728.95	3 485 710.16
L222	-51 132.71	3 496	452.21	R222	-66 787.23	3 485 696.17
L223	-51 161.54	3 496	394.59	R223	-66 930.35	3 485 665.37
L224	-51 193.74	3 496	357.06	R224	-67 128.25	3 485 626.78
L225	-51 246.52	3 496	319.64	R225	-67 159.32	3 485 623.63
L226	-53 853.20	3 493	283.24	R226	-67 230.58	3 485 634.32
L227	-53 905.90	3 493	225.42	R227	-67 249.96	3 485 631.04
L228	-53 972.73	3 493	163.20	R228	-67 399.00	3 485 573.93
L229	-54 029.35	3 493	117.90	R229	-70 775.21	3 484 915.40
L230	-54 578.34	3 492	697.00	R230	-71 184.54	3 484 835.52
L231	-54 637.76	3 492	649.30	R231	-75 934.75	3 483 908.84
L232	-54 695.03	3 492	599.28	R232	-76 072.69	3 483 881.35
L233	-54 715.44	3 492	580.17	R233	-76 130.40	3 483 866.89
L234	-54 753.28	3 492	543.38	R234	-76 188.42	3 483 848.81
L235	-56 213.89	3 490	524.51	R235	-76 226.61	3 483 834.80
L236	-56 214.46	3 490	523.73	R236	-76 264.00	3 483 819.22
L237	-56 451.21	3 490	197.13	R237	-76 300.98	3 483 801.98
L238	-56 495.10	3 490	136.66	R238	-76 372.36	3 483 763.60
L239	-56 539.86	3 490	076.54	R239	-76 586.22	3 483 637.85
L240	-56 635.57	3 489	958.44	R240	-76 734.09	3 483 550.91
L241	-56 830.50	3 489	728.67	R241	-77 061.88	3 483 358.26
L242	-58 287.68	3 488	010.94	R242	-77 586.03	3 483 050.00
L243	-58 363.25	3 487	921.36	R243	-77 858.83	3 482 889.43
L244	-58 433.29	3 487	838.84	R244	-77 887.63	3 482 869.91
L245	-58 475.94	3 487	792.62	R245	-78 388.34	3 482 575.98
L246	-58 559.92	3 487	721.79	R246	-78 655.27	3 482 418.59
L247	-58 637.64	3 487	673.65	R247	-78 684.74	3 482 403.98
L248	-58 677.27	3 487	654.57	R248	-78 767.65	3 482 352.39
L249	-58 787.50	3 487	607.04	R249	-78 823.42	3 482 337.16
L250	-58 858.63	3 487	561.81	R250	-78 851.72	3 482 320.48
L251	-58 870.04	3 487	504.84	R251	-78 907.83	3 482 269.79
L252	-58 980.53	3 487	584.91	R252	-80 451.73	3 481 362.39
L253	-59 047.89	3 487	591.99	R253	-80 475.63	3 481 350.72
L254	-59 353.70	3 487	594.69	R254	-80 580.37	3 481 294.04
L255	-59 454.25	3 487	590.88	R255	-80 651.37	3 481 257.89

Vel Sheet	20	Van of	22	P834/14
--------------	----	-----------	----	---------

PADRESERWE KOÖRDINATE / ROAD RESERVE CO-ORDINATES						
LINKERKANT/LEFT HAND SIDE				REGTERKANT/RIGHT HAND SIDE		
	Y	X	WG 23°		Y	X
L256	-59 611.38	3 487	553.73	R256	-80 733.50	3 481 219.82
L257	-62 834.41	3 486	693.28	R257	-80 737.79	3 481 217.81
L258	-62 834.68	3 486	693.21	R258	-80 814.89	3 481 184.61
L259	-64 875.60	3 486	149.77	R259	-80 926.21	3 481 141.22
L260	-66 077.45	3 485	828.97	R260	-81 020.27	3 481 108.42
L261	-66 700.10	3 485	663.81	R261	-81 090.87	3 481 086.51
L262	-66 775.65	3 485	643.98	R262	-81 153.35	3 481 068.33
L263	-68 088.27	3 485	385.39	R263	-81 230.36	3 481 047.94
L264	-70 742.88	3 484	866.12	R264	-81 307.91	3 481 029.54
L265	-71 387.61	3 484	740.34	R265	-81 385.71	3 481 013.39
L266	-75 497.35	3 483	942.02	R266	-81 463.98	3 480 999.21
L267	-75 757.85	3 483	890.79	R267	-81 562.39	3 480 984.59
L268	-76 003.99	3 483	843.48	R268	-81 621.69	3 480 977.30
L269	-76 010.07	3 483	842.17	R269	-81 668.66	3 480 972.35
L270	-76 105.59	3 483	813.01	R270	-82 220.11	3 480 918.90
L271	-76 200.11	3 483	782.24	R271	-82 459.02	3 480 895.70
L272	-76 257.59	3 483	760.67	R272	-82 935.34	3 480 849.65
L273	-76 349.46	3 483	723.18	R273	-83 313.76	3 480 812.53
L274	-76 445.28	3 483	677.54	R274	-83 391.70	3 480 800.90
L275	-76 498.73	3 483	649.62	R275	-83 453.07	3 480 788.58
L276	-76 677.46	3 483	545.39	R276	-83 497.97	3 480 778.11
L277	-76 819.32	3 483	462.02	R277	-83 546.50	3 480 765.07
L278	-77 040.98	3 483	331.24	R278	-83 627.92	3 480 739.25
L279	-77 310.87	3 483	172.57	R279	-83 843.00	3 480 650.61
L280	-77 565.82	3 483	023.10	R280	-84 024.38	3 480 541.93
L281	-77 958.56	3 482	791.41	R281	-84 573.47	3 480 168.41
L282	-78 340.06	3 482	568.04	R282	-84 648.39	3 480 106.26
L283	-78 662.19	3 482	378.29	R283	-84 717.27	3 480 065.46
L284	-78 781.66	3 482	308.26	R284	-84 750.11	3 480 043.27
L285	-78 964.90	3 482	201.66	R285	-84 892.75	3 479 964.32
L286	-79 808.71	3 481	705.57	R286	-85 451.66	3 479 660.91
L287	-80 407.04	3 481	351.90	R287	-86 129.52	3 479 272.24
L288	-80 454.03	3 481	324.24	R288	-86 215.54	3 479 221.70
L289	-80 454.84	3 481	313.51	R289	-86 328.80	3 479 136.37
L290	-80 460.31	3 481	310.41	R290	-86 359.99	3 479 109.21
L291	-80 469.72	3 481	315.27	R291	-86 429.20	3 479 049.15
L292	-80 535.89	3 481	279.08	R292	-86 511.93	3 478 948.25
L293	-80 670.83	3 481	211.43	R293	-86 566.71	3 478 888.38
L294	-80 708.49	3 481	194.32	R294	-86 625.06	3 478 807.18
L295	-80 739.56	3 481	180.20	R295	-86 658.88	3 478 727.07
L296	-80 821.46	3 481	128.07	R296	-86 704.39	3 478 650.01
L297	-80 872.42	3 481	107.39	R297	-86 737.42	3 478 604.47
L298	-80 959.20	3 481	072.73	R298	-86 789.72	3 478 535.58
L299	-81 226.74	3 480	989.91	R299	-86 807.93	3 478 504.95
L300	-81 344.10	3 480	963.38	R300	-86 816.15	3 478 488.60
L301	-81 470.83	3 480	941.86	R301	-86 838.75	3 478 443.62
L302	-81 562.09	3 480	931.04	R302	-86 867.34	3 478 387.08
L303	-82 165.91	3 480	872.57	R303	-86 948.21	3 478 299.44
L304	-82 469.86	3 480	843.21	R304	-87 054.44	3 478 204.34
L305	-82 800.49	3 480	811.25	R305	-87 628.10	3 477 739.18
L306	-83 115.40	3 480	781.14	R306	-87 856.95	3 477 554.45

Vel	21	Van	22	P834/14
Sheet		of		

PADRESERWE KOÖRDINATE / ROAD RESERVE CO-ORDINATES									
LINKERKANT/LEFT HAND SIDE				REGTERKANT/RIGHT HAND SIDE					
				WG 23°	Y	X			
L307	-83	489.53	3 480	744.54	R307	-87	869.95	3 477	544.66
L308	-83	613.84	3 480	709.68	R308	-88	015.93	3 477	440.66
L309	-83	667.32	3 480	690.75	R309	-88	057.27	3 477	413.34
L310	-83	791.70	3 480	637.46	R310	-88	065.71	3 477	408.42
L311	-83	828.89	3 480	618.67	R311	-88	158.23	3 477	354.54
L312	-83	887.15	3 480	585.70	R312	-88	196.28	3 477	333.28
L313	-83	920.89	3 480	565.08	R313	-88	247.81	3 477	306.50
L314	-83	963.75	3 480	537.02	R314	-88	287.04	3 477	286.76
L315	-84	038.33	3 480	486.37	R315	-88	304.57	3 477	278.64
L316	-84	500.45	3 480	172.46	R316	-88	391.41	3 477	240.58
L317	-84	524.92	3 480	155.89	R317	-88	522.69	3 477	195.33
L318	-84	557.69	3 480	123.79	R318	-88	606.70	3 477	172.08
L319	-84	605.72	3 480	090.66	R319	-88	740.58	3 477	133.43
L320	-84	639.78	3 480	067.08	R320	-88	854.35	3 477	102.95
L321	-88	065.71	3 477	408.42	R321	-88	915.08	3 477	089.18
L322	-84	747.91	3 480	004.25	R322	-89	097.94	3 477	058.60
L323	-84	831.86	3 479	948.97	R323	-89	598.58	3 477	010.16
L324	-84	954.28	3 479	876.48	R324	-89	694.17	3 477	000.91
L325	-84	995.59	3 479	863.72	R325	-89	703.03	3 477	000.04
L326	-85	248.97	3 479	719.26	R326	-89	840.44	3 476	986.50
L327	-85	445.14	3 479	606.12	R327	-90	015.37	3 476	968.83
L328	-86	146.93	3 479	203.63	LINKERKANT/LEFT HAND SIDE				
L329	-86	188.85	3 479	178.29					
L330	-86	215.94	3 479	161.95	L358	-89	136.33	3 477	015.13
L331	-86	279.30	3 479	112.24	L359	-89	414.87	3 476	988.20
L332	-86	391.58	3 479	016.36	L360	-89	534.72	3 476	972.51
L333	-86	465.93	3 478	926.60	L361	-89	573.25	3 476	973.03
L334	-86	563.66	3 478	802.11	L362	-89	600.39	3 476	970.26
L335	-86	611.30	3 478	731.30	L363	-89	673.52	3 476	962.77
L336	-86	753.09	3 478	487.73	L364	-89	704.89	3 476	959.01
L337	-86	815.53	3 478	399.54	L365	-89	834.22	3 476	943.49
L338	-86	826.49	3 478	382.03	L366	-89	913.81	3 476	910.31
L339	-86	868.72	3 478	326.66	L367	-90	015.37	3 476	914.12
L340	-86	940.06	3 478	252.76					
L341	-86	991.50	3 478	202.43					
L342	-87	179.22	3 478	052.33					
L343	-87	815.97	3 477	535.70					
L344	-87	862.17	3 477	497.60					
L345	-87	960.54	3 477	425.93					
L346	-87	980.23	3 477	413.14					
L347	-88	039.97	3 477	375.04					
L348	-88	056.36	3 477	364.75					
L349	-88	194.94	3 477	288.01					
L350	-88	389.88	3 477	173.56					
L351	-88	416.78	3 477	165.17					
L352	-88	538.25	3 477	151.63					
L353	-88	657.84	3 477	117.93					
L354	-88	721.43	3 477	095.45					
L355	-88	783.89	3 477	082.13					
L356	-88	900.99	3 477	054.01					
L357	-88	996.03	3 477	029.64					
				Vel	22	Van	22	P834/14	
				Sheet		of			

Printed by and obtainable from the Government Printer, Bosman Street, Private Bag X85, Pretoria, 0001  
Contact Centre Tel: 012-748 6200. eMail: info.egazette@gpw.gov.za  
Publications: Tel: (012) 748 6053, 748 6061, 748 6065