



# Government Gazette Staatskoerant

REPUBLIC OF SOUTH AFRICA  
REPUBLIEK VAN SUID AFRIKA

Vol. 612

2 June 2016  
2 Junie 2016

No. 40037

N.B. The Government Printing Works will not be held responsible for the quality of "Hard Copies" or "Electronic Files" submitted for publication purposes

ISSN 1682-5843



9 771682 584003

40037



**AIDS HELPLINE: 0800-0123-22 Prevention is the cure**

# Government Printing Works

## Notice submission deadlines

Government Printing Works has over the last few months implemented rules for completing and submitting the electronic Adobe Forms when you, the customer, submit your notice request.

In line with these business rules, GPW has revised the notice submission deadlines for all gazettes. Please refer to the GPW website [www.gpwonline.co.za](http://www.gpwonline.co.za) to familiarise yourself with the new deadlines.

### CANCELLATIONS

Don't forget!

Cancellation of notice submissions are accepted by GPW according to the deadlines stated in the table above.

Non-compliance to these deadlines will result in your request being failed. **Please pay special attention to the different deadlines for each gazette.**

**Please note that any notices cancelled after the cancellation deadline will be published and charged at full cost.**

Requests for cancellation must be sent by the original sender of the notice and must be accompanied by the relevant notice reference number (N-) in the email body.

### AMENDMENTS TO NOTICES

take note!

With effect from 01 October, GPW will not longer accept amendments to notices. The cancellation process will need to be followed and a new notice submitted thereafter for the next available publication date.

### CUSTOMER INQUIRIES



Many of our customers request immediate feedback/confirmation of notice placement in the gazette from our Contact Centre once they have submitted their notice – While GPW deems it one of their highest priorities and responsibilities to provide customers with this requested feedback and the best service at all times, we are only able to do so once we have started processing your notice submission.

GPW has a **2-working day turnaround time for processing notices** received according to the business rules and deadline submissions.

Please keep this in mind when making inquiries about your notice submission at the Contact Centre.

### PROOF OF PAYMENTS



GPW reminds you that all notice submissions **MUST** be submitted with an accompanying proof of payment (PoP) or purchase order (PO). If any PoP's or PO's are received without a notice submission, it will be failed and your notice will not be processed.

When submitting your notice request to [submit.egazette@gpw.gov.za](mailto:submit.egazette@gpw.gov.za), please ensure that a purchase order (GPW Account customer) or proof of payment (non-GPW Account customer) is included with your notice submission. All documentation relating to the notice submission must be in a single email.

A reminder that documents must be attached separately in your email to GPW. (In other words, your email should have an Adobe Form plus proof of payment/purchase order – 2 separate attachments – where notice content is applicable, it should also be a 3rd separate attachment).

### REMINDER OF THE GPW BUSINESS RULES

- Single notice, single email – with proof of payment or purchase order.
- All documents must be attached separately in your email to GPW.
- 1 notice = 1 form, i.e. each notice must be on a separate form
- Please submit your notice **ONLY ONCE**.
- Requests for information, quotations and inquiries must be sent to the Contact Centre **ONLY**.
- The notice information that you send us on the form is what we publish. Please do not put any instructions in the email body.

**IMPORTANT NOTICE:**

**THE GOVERNMENT PRINTING WORKS WILL NOT BE HELD RESPONSIBLE FOR ANY ERRORS THAT MIGHT OCCUR DUE TO THE SUBMISSION OF INCOMPLETE / INCORRECT / ILLEGIBLE COPY.**

**No FUTURE QUERIES WILL BE HANDLED IN CONNECTION WITH THE ABOVE.**

**Contents**

<i>No.</i>		<i>Gazette No.</i>	<i>Page No.</i>
<b>GOVERNMENT NOTICES • GOEWERMENTSKENNISGEWINGS</b>			
<b>Transport, Department of/ Vervoer, Departement van</b>			
615	South African National Roads Agency Limited and National Roads Act (7/1998): Declaration amendment of National Road R49 Section 1: Mahikeng-Zeerust (N4) .....	40037	4
615	Wet op Suid-Afrikaanse Nasionale Padagentskap Beperk en Nasionale Paaie (7/1998): Verklaring wysiging van Nasionale Pad R49 Seksie 1: Mahikeng-Zeerust (N4) .....	40037	5

---

GOVERNMENT NOTICES • GOEWERMENTSKENNISGEWINGS

---

DEPARTMENT OF TRANSPORT

NO. 615

02 JUNE 2016

**THE SOUTH AFRICAN NATIONAL ROADS  
AGENCY SOC LIMITED**

Registration No: 1998/009584/30

---

**DECLARATION AMENDMENT OF NATIONAL ROAD R49 SECTION 1**

AMENDMENT OF DECLARATION No. 784 OF 2012

By virtue of Section 40 (1)(b) of The South African National Roads Agency Limited and National Roads Act, 1998 (Act No. 7 of 1998), I hereby amend Declaration No. 784 of 2012 by substituting paragraph D(i) of the schedule thereof, with the subjoined sheets 1 to 19 of Plan No. P872/15.

**(National Road R49 Section 1: Mahikeng – Zeerust (N4)).**

---

MINISTER OF TRANSPORT

DEPARTEMENT VAN VERVOER

NO. 615

02 JUNIE 2016

**DIE SUID-AFRIKAANSE NASIONALE  
PADAGENTSKAP MSB BEPERK**

Registrasie No: 1998/009584/30

**VERKLARING WYSIGING VAN NASIONALE PAD R49 SEKSIE 1**

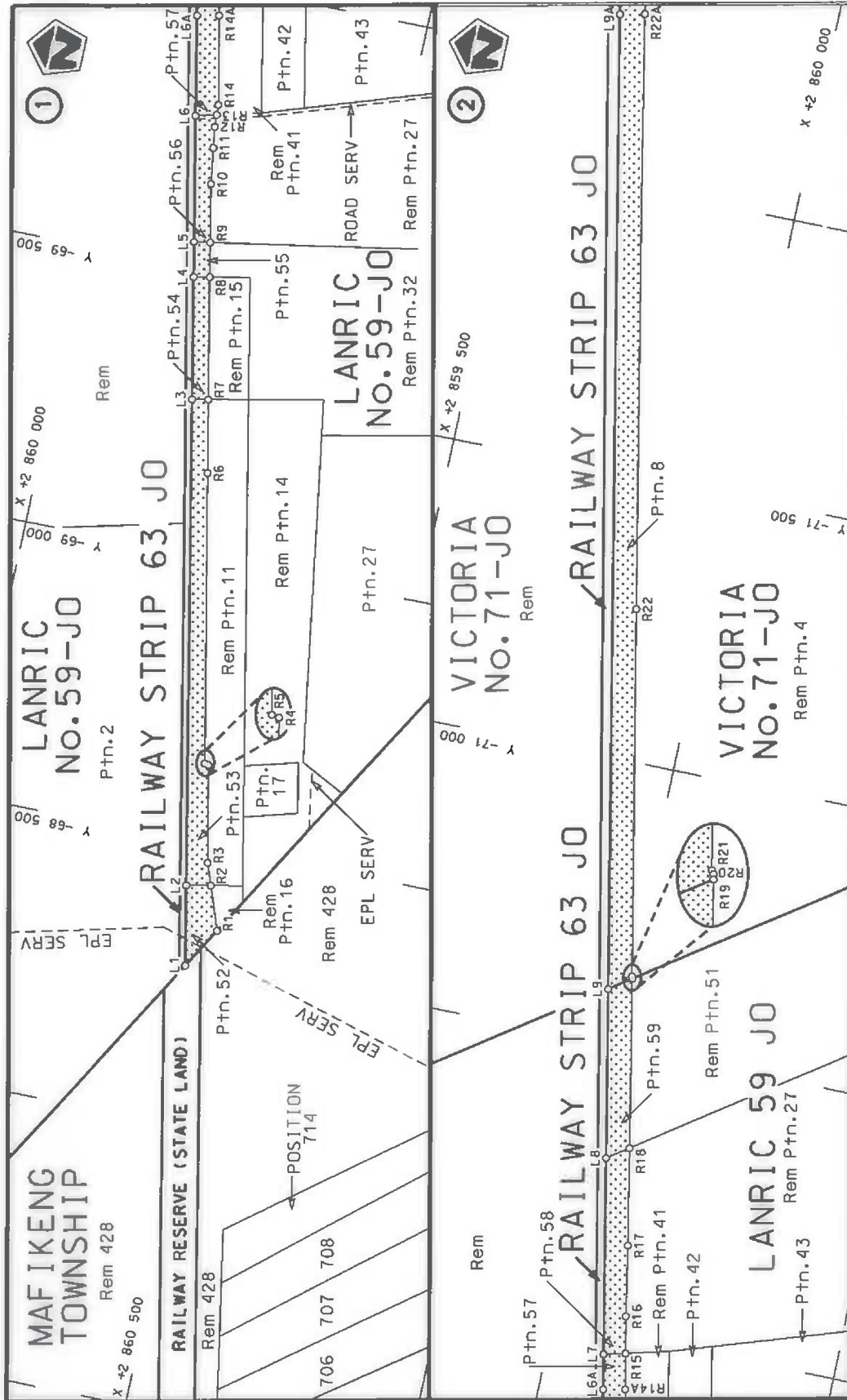
**WYSIGING VAN VERKLARING No. 784 VAN 2012**

Kragtens Artikel 40(1)(b) van die Wet op die Suid-Afrikaanse Nasionale Padagentskap Beperk en op Nasionale Paaie, 1998 (Wet No. 7 van 1998), wysig ek hiermee Verklaring No. 784 van 2012 deur paragraaf D(i) van die skedule te vervang met bygaande velle 1 tot 19 van Plan No. P872/15.

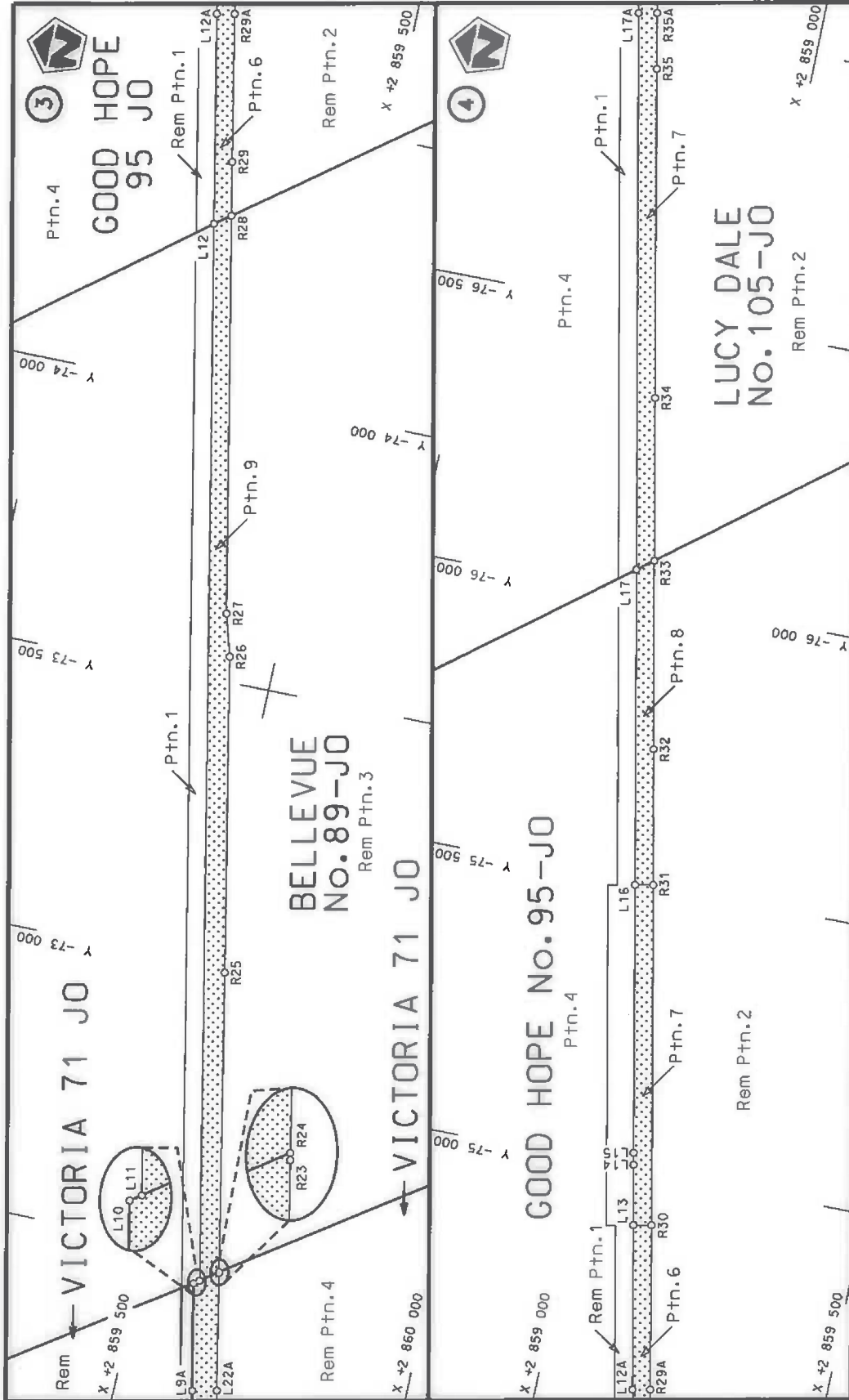
**(Nasionale Pad R49 Seksie 1: Mahikeng – Zeerust (N4))**


  
A handwritten signature in black ink, appearing to read 'G. M. M. M.', is written over a horizontal line.

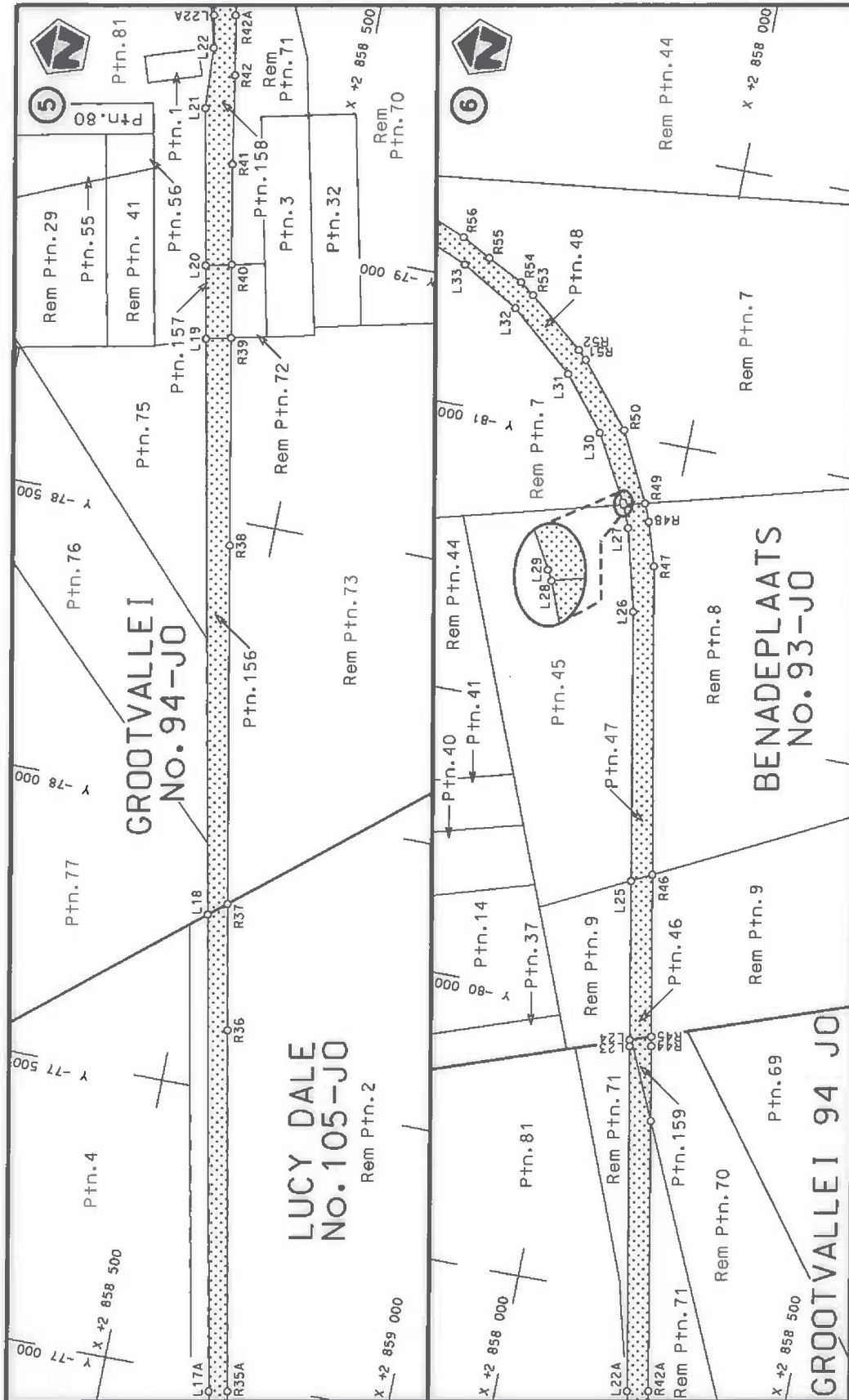
**MINISTER VAN VERVOER**



<p>Die Suid Afrikaanse Nasionale Padagentskap MSB Bpk The South African National Roads Agency SOC Ltd</p>	<p>Die figuur getoon The figure shown</p>	<p>stelt die padreserwe voor van 'n gedeelte represents the road reserve of a portion van Nasionale Roete R49 of National Route R49</p>	<p>Vel Sheet 1 of 19 Plan 872/15</p>
---	---	---	--

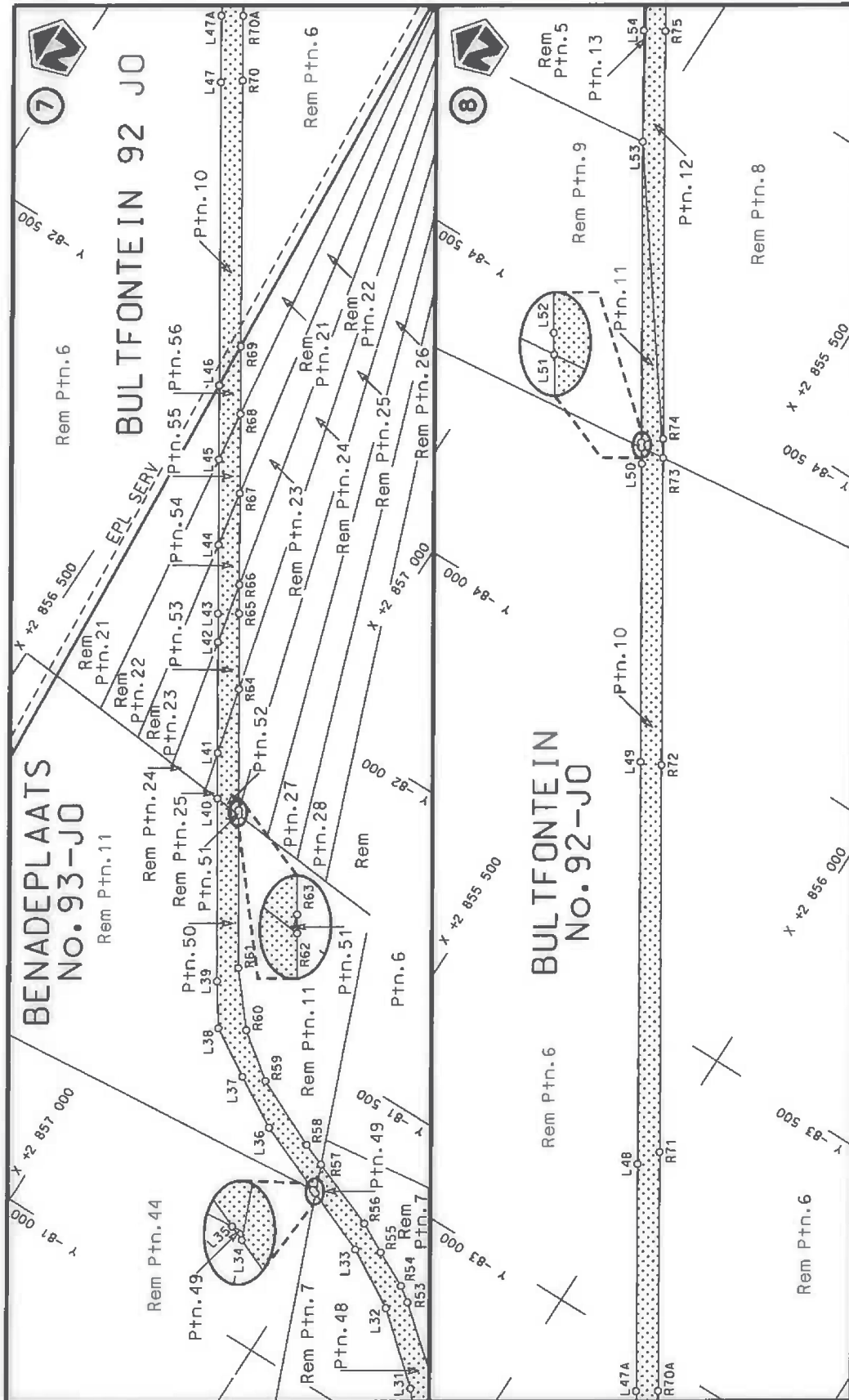


Die Suid Afrikaanse Nasionale Padagentskop MSB Bpk The South African National Roads Agency SOC Ltd	Die figuur getoon The figure shown		steldie padreserwe voor van 'n gedeelte represents the road reserve of a portion van Nasionale Roete R49 of National Route Section	Vel Sheet 2 of 19
				Plan 872/15

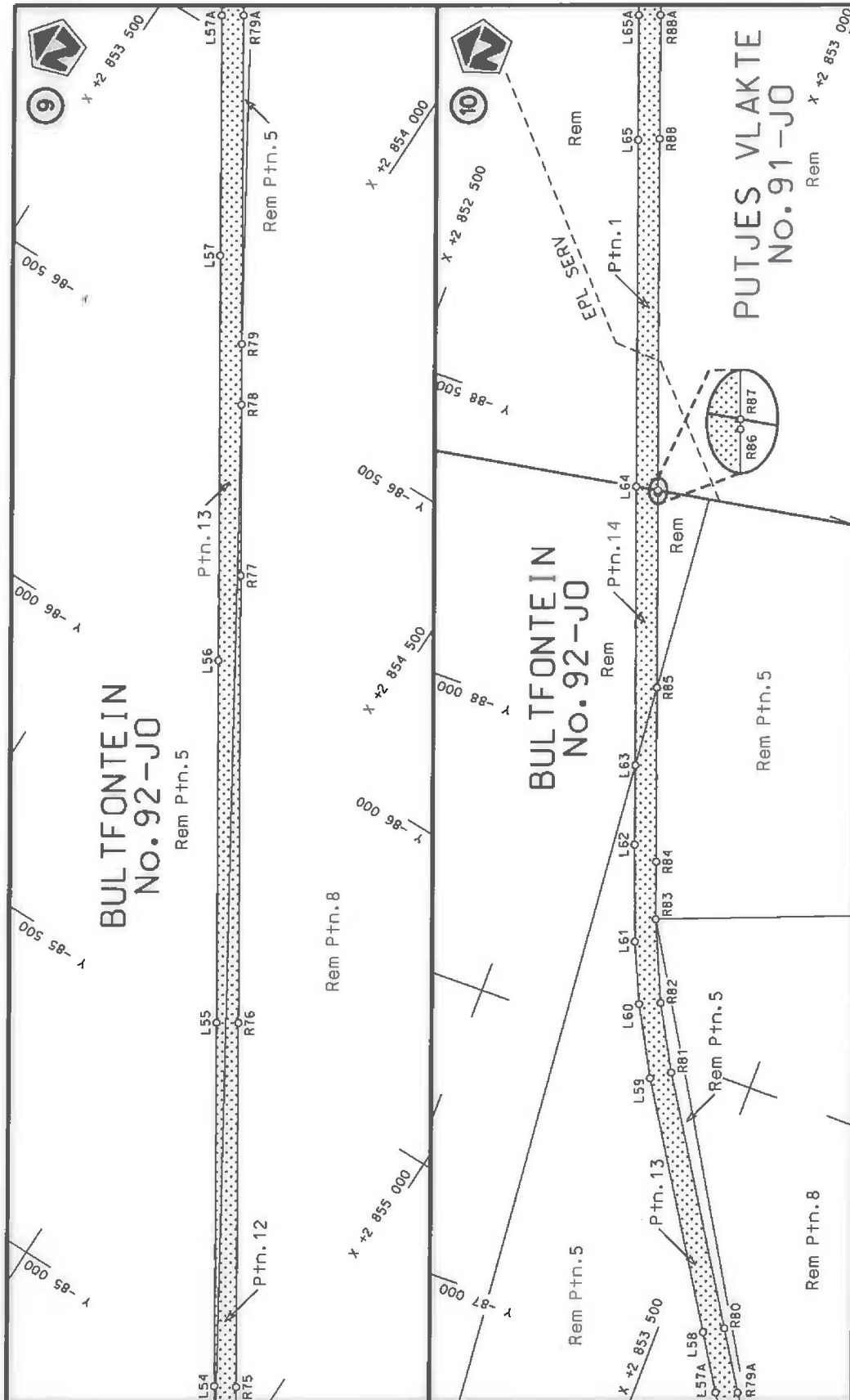


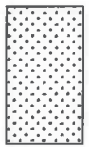
Die Suid Afrikaanse Nasionale Padagentskap MSB Bpk The South African National Roads Agency SOC Ltd	Die figuur getoon The figure shown		steldie padreserwe voor van 'n gedeelte represents the road reserve of a portion van Nasionale Roete R49 of National Route Section	
			1	872/15
Vel Sheet 3 of 19		Plan 872/15		

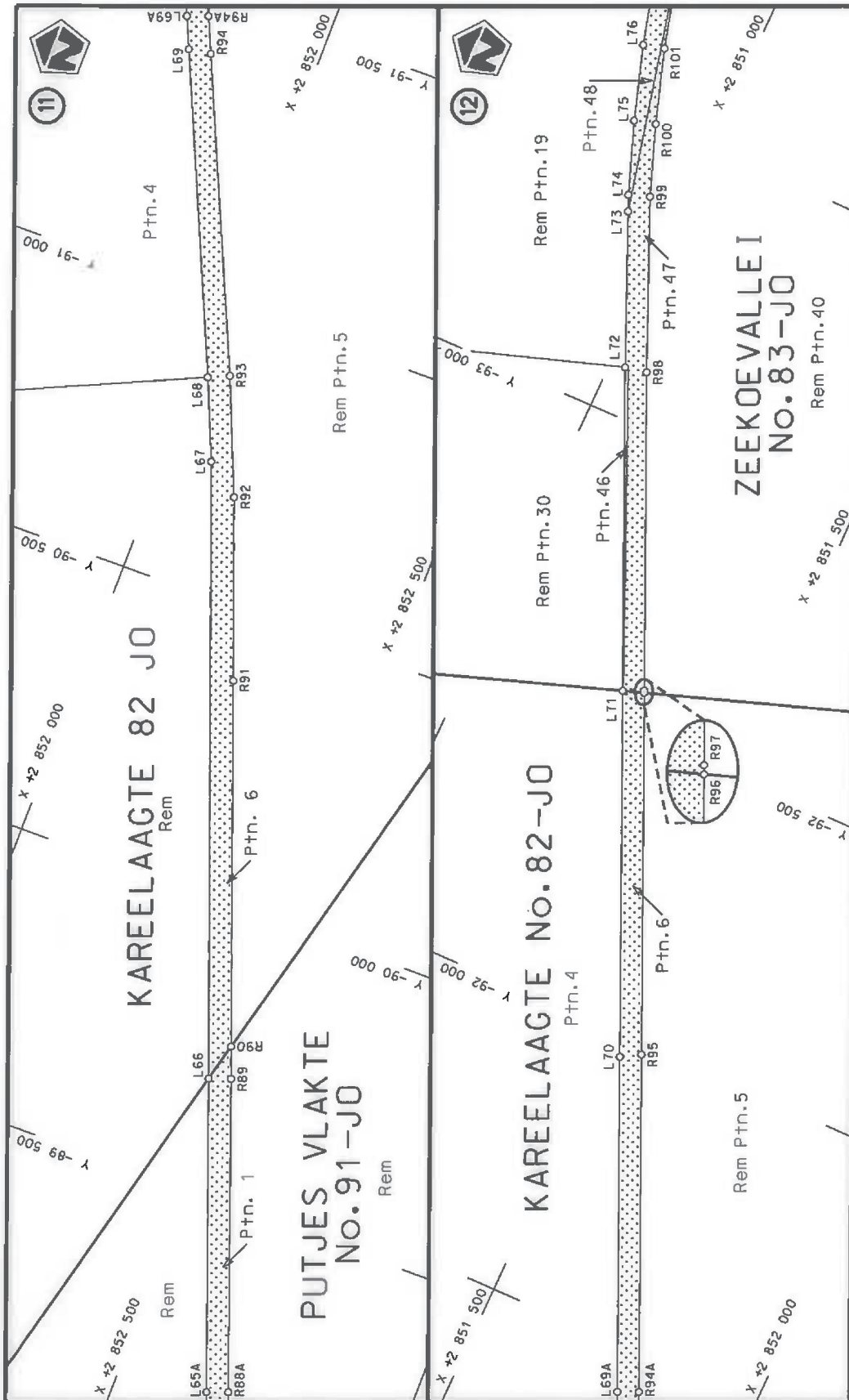





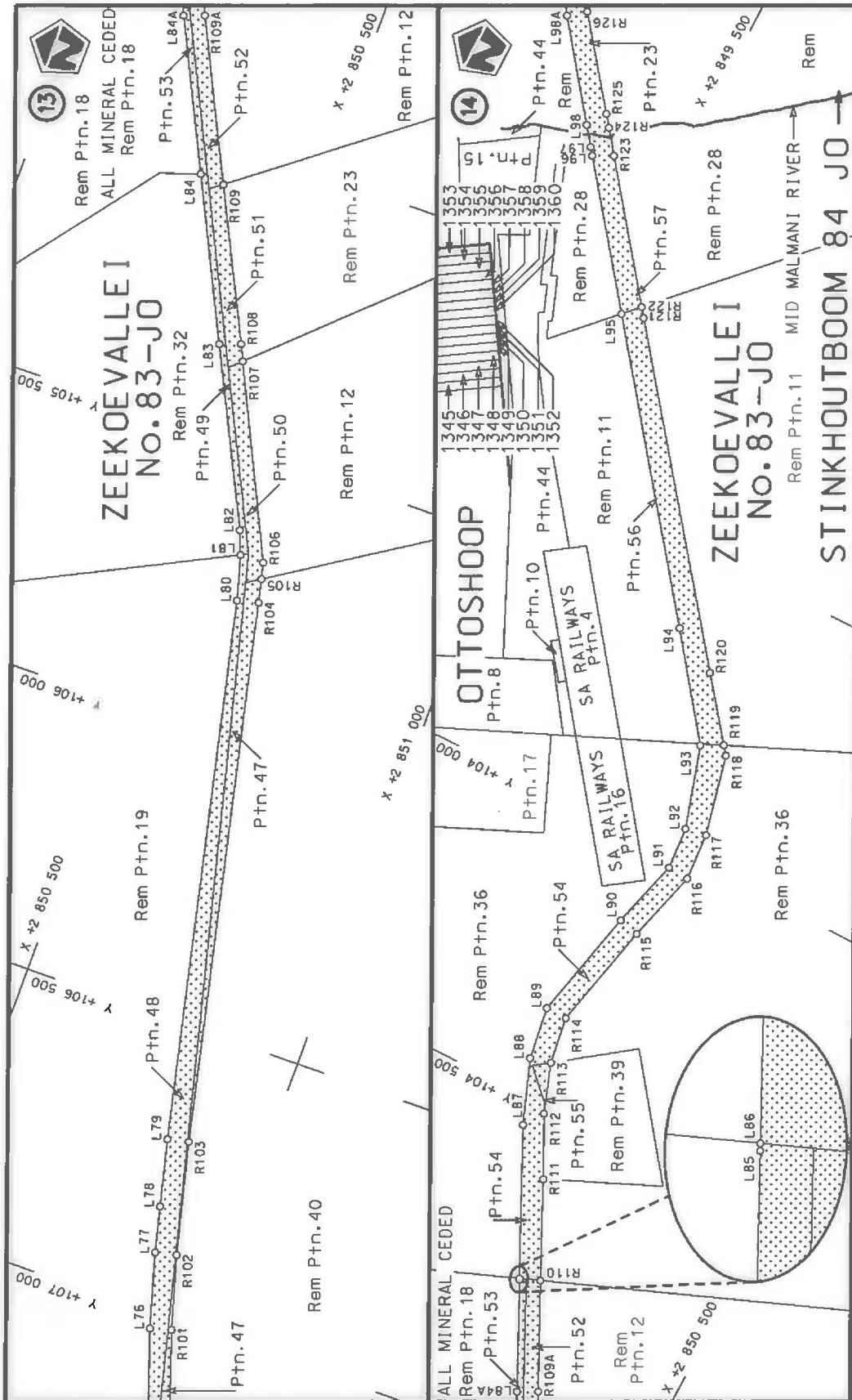
Die Suid-Afrikaanse Nasionale Padagentskap MSB Bpk The South African National Roads Agency SOC Ltd	Die figuur getoon The figure shown		stel die padreserwe voor van 'n gedeelte represents the road reserve of a portion van Nasionale Roete R49 of National Route Section	Vel Sheet 4 of 19
				Plan 872/15



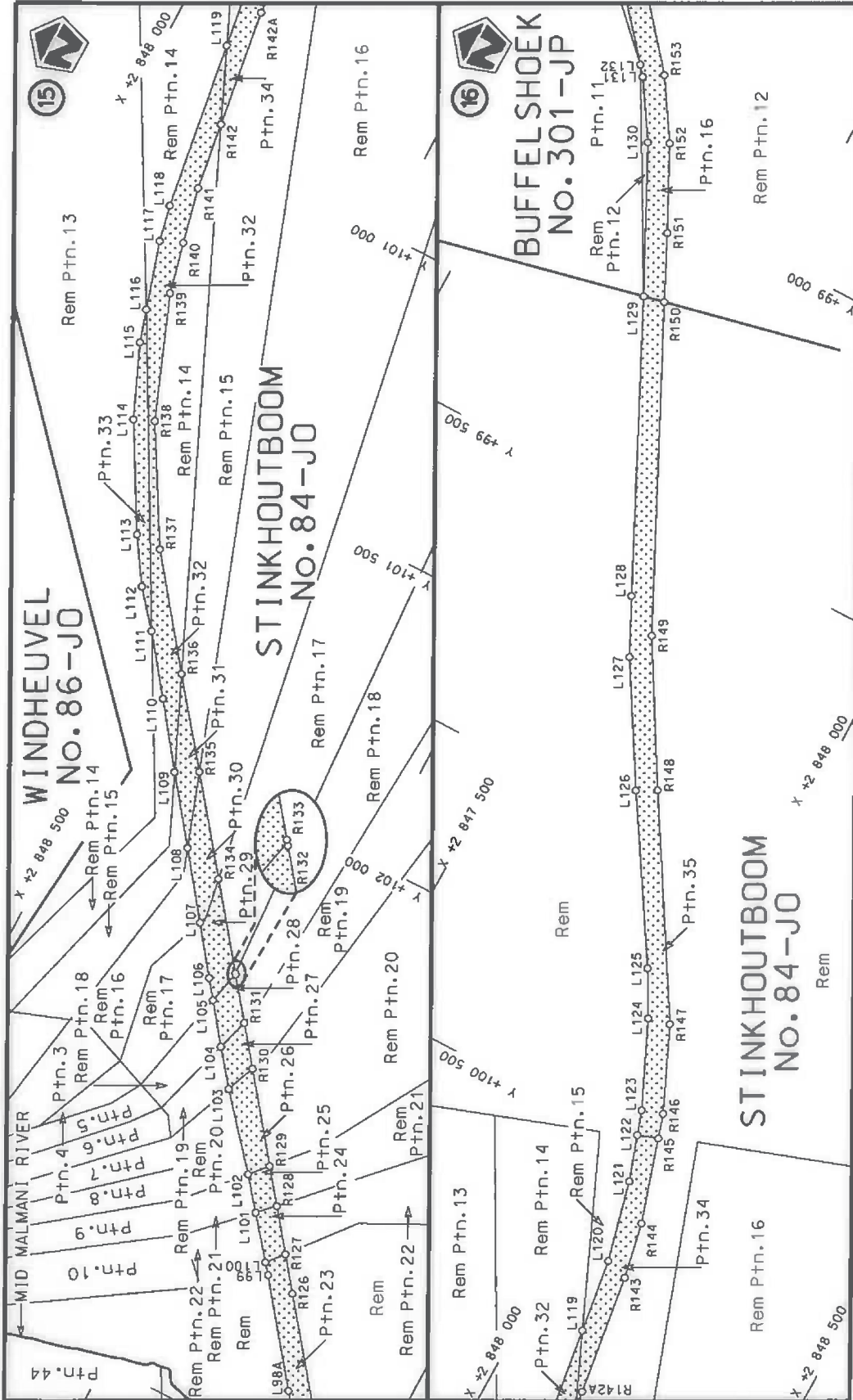
<p>Die Suid Afrikaanse Nasionale Padagentskap MSB Bpk The South African National Roads Agency SOC Ltd</p>	<p>Die figuur getoon The figure shown</p>		<p>steldie podreserwe voor van 'n gedeelte represents the road reserve of a portion van Nasionale Roete R49 of National Route</p>	<p>Vel Sheet 5 of 19 Plan 872/15</p>
---	---	---	---	--



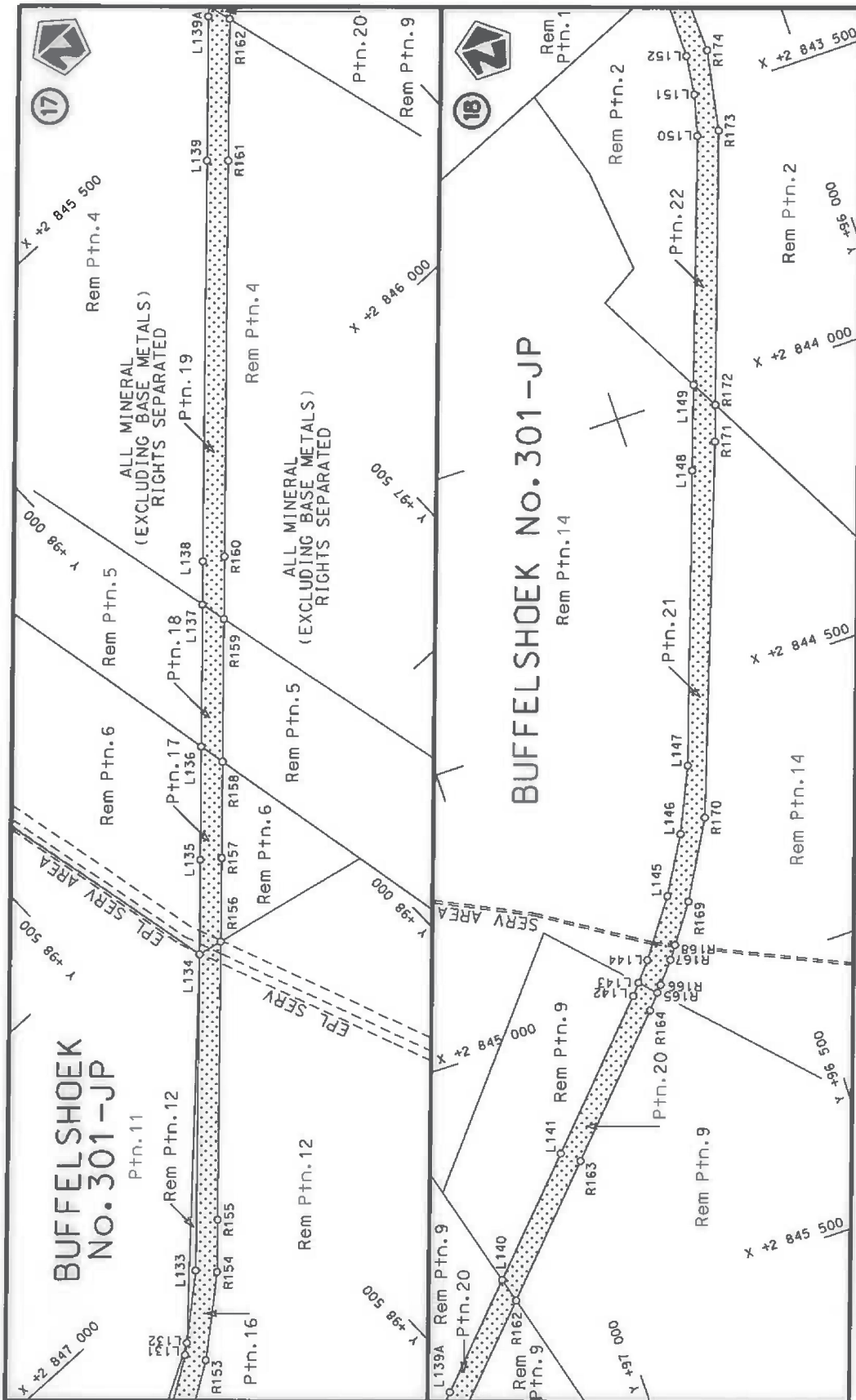
Die Suid Afrikaanse Nasionale Padagentskap MSB Bpk The South African National Roads Agency SOC Ltd	Die figuur getoon The figure shown		steldie padreserwe voor van 'n gedeelte represents the road reserve of a portion van Nasionale Roete R49 Sektie of National Route R49 Section	Vel Sheet 6 of 19
				Plan 872/15



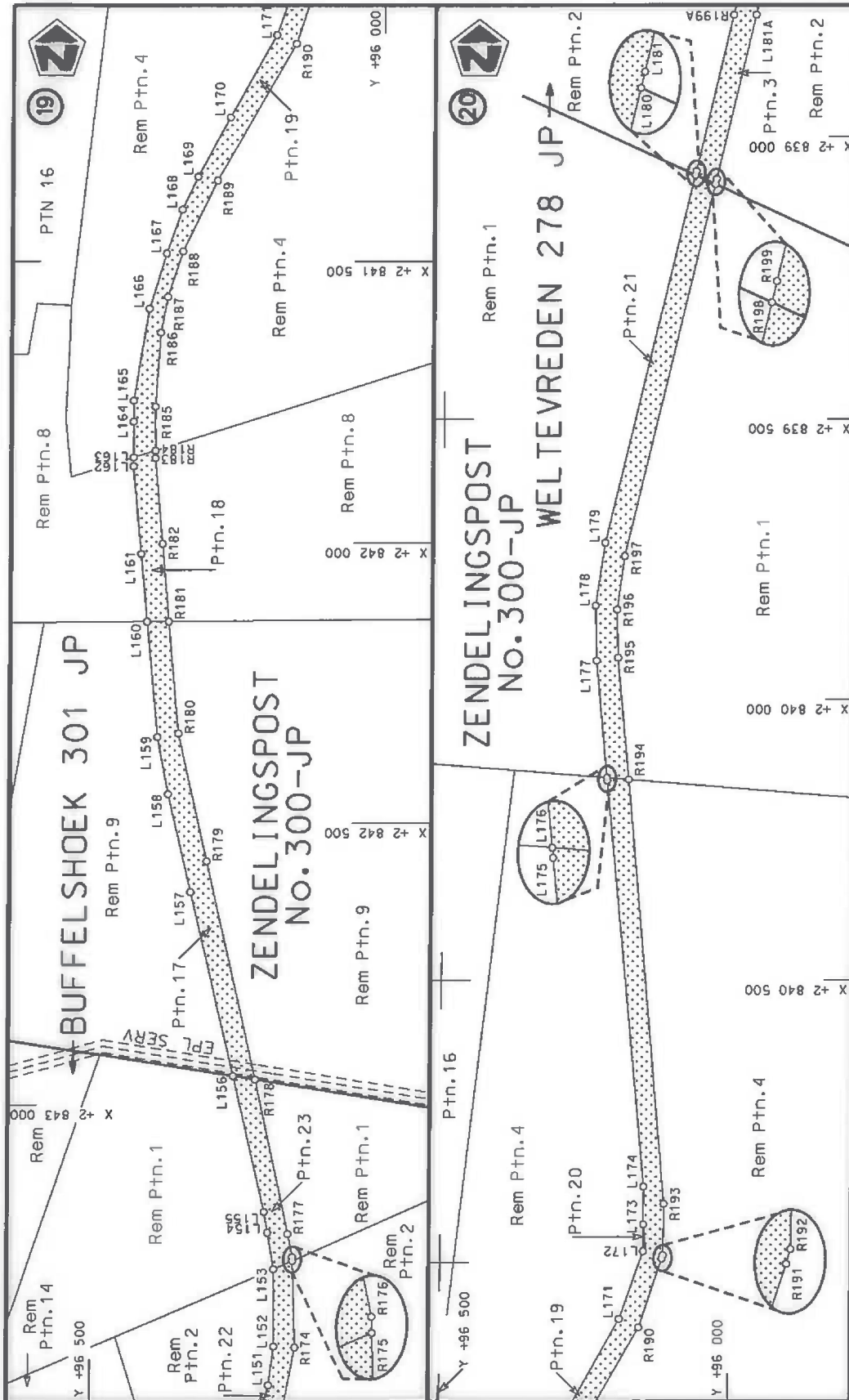
Die Suid Afrikaanse Nasionale Padagentskap MSB Bpk The South African National Roads Agency SOC Ltd	Die figuur getoon The figure shown		steldie padreserwe voor van 'n gedeelte represents the road reserve of a portion van Nasionale Roete R49 of National Route Section	
			1	7 of 19 Plan 872/15



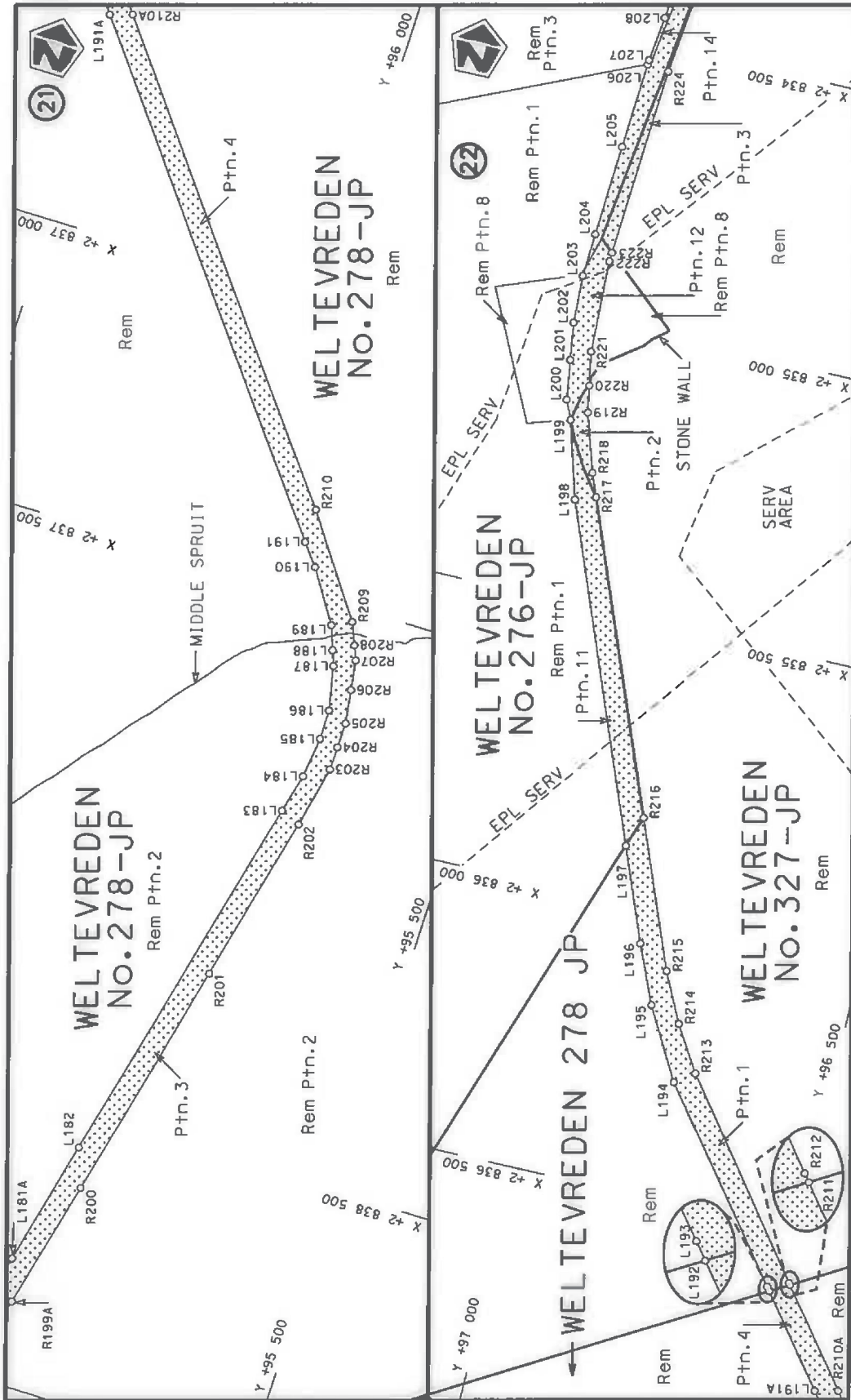
<p>Die Suid Afrikaanse Nasionale Padagentskap MSB Bpk The South African National Roads Agency SOC Ltd</p>	<p>Die figuur getoon The figure shown</p>	<p>stelt die padreserwe voor van 'n gedeelte represents the road reserve of a portion van Nasionale Roete R49 of National Route</p>	<p>Vel Sheet 8 van 19</p>
<p>1</p>		<p>Seksie R49</p>	<p>Plan 872/15</p>



Die Suid Afrikaanse Nasionale Padagentskap MSB Bpk The South African National Roads Agency SOC Ltd	Die figuur getoon The figure shown		steldie padreserwe voor van 'n gedeelte represents the road reserve of a portion van Nasionale Roete R49 of National Route R49	Vel Sheet 9 of 19
				Plan 872/15

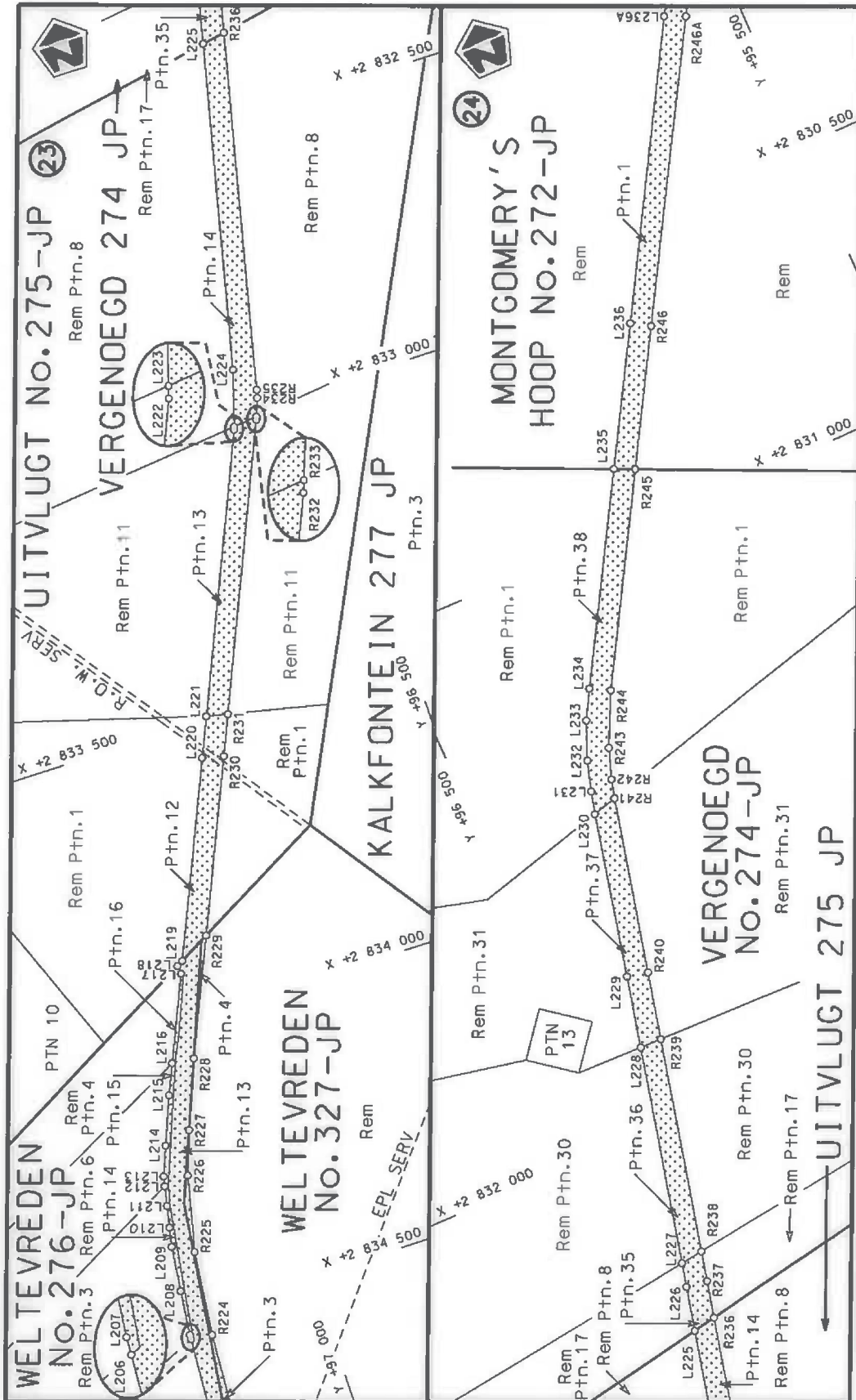


<p>Die Suid Afrikaanse Nasionale Padagentskap MSB Bpk The South African National Roads Agency SOC Ltd</p>	<p>Die figuur getoon The figure shown</p>	<p>steldie padreserwe voor van 'n gedeelte represents the road reserve of a portion van Nasionale Roete R49 of National Route</p>	<p>Vel van 19 Sheet of 19 Plan 872/15</p>
---	---	---	---

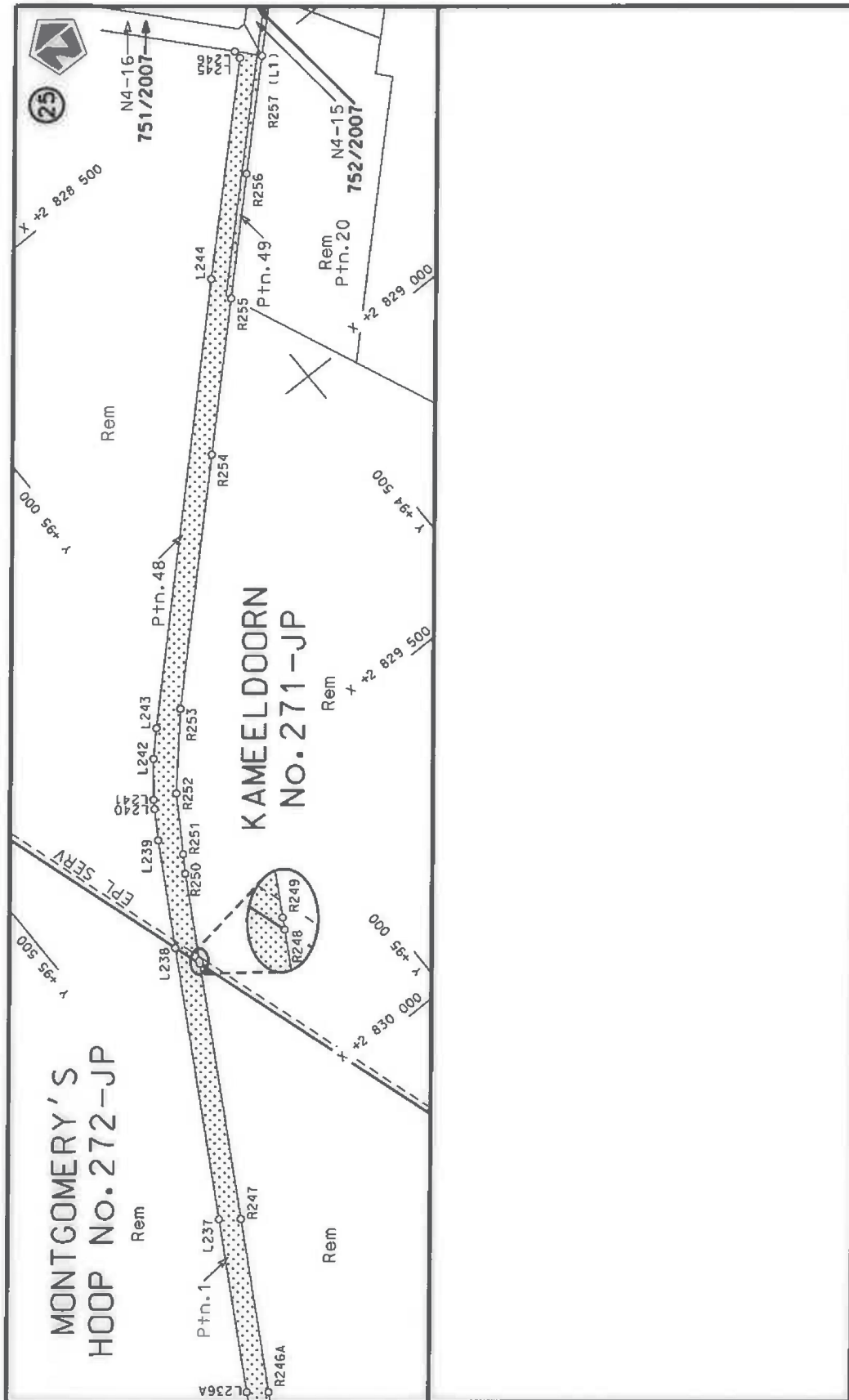



Die Suid Afrikaanse Nasionale Padagentskap MSB Bpk The South African National Roads Agency SOC Ltd	Die figuur getoon The figure shown		steldie podreserwe voor van 'n gedeelte represents the road reserve of a portion van Nasionale Roete R49 of National Route of National Route	
			1	Section
Vel Sheet 11 of 19		Plan 872/15		





Die Suid Afrikaanse Nasionale Padagentskap MSB Bpk The South African National Roads Agency SOC Ltd	Die figuur getoon The figure shown	steidie padreserwe voor van 'n gedeelte represents the road reserve of a portion van Nasionale Roete R49 Sektie R49 Section 1	Vel van 19 Sheet 12 of 19 Plan 872/15
	Die figuur getoon The figure shown		steidie padreserwe voor van 'n gedeelte represents the road reserve of a portion van Nasionale Roete R49 Sektie R49 Section 1



<p>Die Suid Afrikaanse Nasionale Padagentskap MSB Bpk The South African National Roads Agency SOC Ltd</p>	<p>Die figuur getoon The figure shown</p>		<p>staldie padreserwe voor van 'n gedeelte represents the road reserve of a portion van Nasionale Roete R49 of National Route Section</p>	<p>Vel. 13 of 19 Sheet 13 of 19 Plan 872/15</p>
---	---	---	---	---

PADRESERWE KOÖRDINATE / ROAD RESERVE CO-ORDINATES					
LINKERKANT/LEFT HAND SIDE			REGTERKANT/RIGHT HAND SIDE		
	Y	X	WG 25°	Y	X
L1	-68 282.19	2 860 438.46		R1	-68 354.21 2 860 479.96
L2	-68 422.12	2 860 410.13		R2	-68 430.50 2 860 452.32
L3	-69 272.44	2 860 237.96		R3	-68 469.13 2 860 438.32
L4	-69 484.90	2 860 194.94		R4	-68 639.98 2 860 402.87
L5	-69 545.93	2 860 182.58		R5	-68 641.36 2 860 396.10
L6	-69 764.86	2 860 138.26		R6	-69 149.70 2 860 291.90
L7	-69 960.88	2 860 098.57		R7	-69 277.81 2 860 265.93
L8	-70 301.73	2 860 029.55		R8	-69 490.55 2 860 222.79
L9	-70 595.76	2 859 970.02		R9	-69 550.78 2 860 210.58
L10	-72 444.09	2 859 595.55		R10	-69 652.41 2 860 189.98
L11	-72 450.75	2 859 604.80		R11	-69 715.66 2 860 180.72
L12	-74 291.71	2 859 232.33		R12	-69 752.47 2 860 175.23
L13	-74 902.98	2 859 108.38		R13	-69 773.89 2 860 174.06
L14	-75 007.86	2 859 086.88		R14	-69 791.93 2 860 173.07
L15	-75 028.67	2 859 082.61		R15	-69 970.34 2 860 136.08
L16	-75 494.60	2 858 988.66		R16	-70 034.77 2 860 122.72
L17	-76 046.19	2 858 877.25		R17	-70 157.79 2 860 099.86
L18	-77 803.38	2 858 521.08		R18	-70 327.46 2 860 066.21
L19	-78 808.93	2 858 316.95		R19	-70 622.24 2 860 007.75
L20	-78 936.37	2 858 291.08		R20	-70 624.53 2 860 007.29
L21	-79 208.82	2 858 235.77		R21	-70 626.07 2 860 006.14
L22	-79 316.28	2 858 229.17		R22	-71 268.70 2 859 875.87
L23	-79 935.11	2 858 109.60		R23	-72 471.02 2 859 635.38
L24	-79 946.46	2 858 107.43		R24	-72 472.62 2 859 635.06
L25	-80 223.89	2 858 054.41		R25	-72 993.06 2 859 532.18
L26	-80 696.09	2 857 963.93		R26	-73 545.48 2 859 421.69
L27	-80 840.80	2 857 926.13		R27	-73 619.55 2 859 399.96
L28	-80 879.81	2 857 910.67		R28	-74 312.08 2 859 259.07
L29	-80 884.35	2 857 908.18		R29	-74 405.27 2 859 240.12
L30	-80 997.82	2 857 844.39		R30	-74 909.06 2 859 139.38
L31	-81 090.10	2 857 770.15		R31	-75 500.67 2 859 019.63
L32	-81 187.34	2 857 657.31		R32	-75 737.68 2 858 971.28
L33	-81 246.30	2 857 556.55		R33	-76 067.89 2 858 904.65
L34	-81 293.28	2 857 444.31		R34	-76 351.51 2 858 847.41
L35	-81 296.14	2 857 437.48		R35	-76 922.68 2 858 732.33
L36	-81 348.05	2 857 313.44		R36	-77 608.29 2 858 594.70
L37	-81 399.33	2 857 225.06		R37	-77 828.23 2 858 550.68
L38	-81 449.37	2 857 143.21		R38	-78 456.19 2 858 429.28
L39	-81 518.00	2 857 096.20		R39	-78 818.57 2 858 359.43
L40	-81 792.33	2 856 921.60		R40	-78 946.28 2 858 334.82
L41	-81 861.00	2 856 877.89		R41	-79 120.75 2 858 301.19
L42	-82 028.19	2 856 771.49		R42	-79 275.65 2 858 274.74
L43	-82 071.34	2 856 744.02		R43	-79 812.38 2 858 171.63
L44	-82 174.94	2 856 678.35		R44	-79 942.37 2 858 146.66
L45	-82 303.30	2 856 596.98		R45	-79 959.21 2 858 143.39
L46	-82 414.51	2 856 526.48		R46	-80 241.50 2 858 088.63
L47	-82 867.84	2 856 239.11		R47	-80 782.23 2 857 983.73
L48	-83 273.10	2 855 982.35		R48	-80 858.70 2 857 959.24
L49	-83 877.75	2 855 601.02		R49	-80 889.33 2 857 946.41
L50	-84 326.88	2 855 315.73		R50	-81 010.48 2 857 885.29
L51	-84 350.87	2 855 299.90		R51	-81 120.25 2 857 795.03

Vel Sheet	14	Van of	19	P872/15
--------------	----	-----------	----	---------

PADRESERWE KOÖRDINATE / ROAD RESERVE CO-ORDINATES					
LINKERKANT/LEFT HAND SIDE			REGTERKANT/RIGHT HAND SIDE		
	Y	X	WG 25°	Y	X
L52	-84 358.88	2 855 294.62		R52	-81 135.13 2 857 779.98
L53	-84 808.18	2 855 009.05		R53	-81 215.52 2 857 683.08
L54	-84 975.02	2 854 904.07		R54	-81 234.04 2 857 658.22
L55	-85 517.98	2 854 559.16		R55	-81 265.77 2 857 595.99
L56	-86 062.46	2 854 213.93		R56	-81 293.49 2 857 544.77
L57	-86 669.96	2 853 828.48		R57	-81 341.31 2 857 424.94
L58	-87 067.69	2 853 576.11		R58	-81 357.11 2 857 385.34
L59	-87 455.76	2 853 330.07		R59	-81 414.34 2 857 263.49
L60	-87 572.19	2 853 265.55		R60	-81 472.40 2 857 186.58
L61	-87 673.29	2 853 219.35		R61	-81 558.06 2 857 114.63
L62	-87 834.59	2 853 158.05		R62	-81 787.70 2 856 968.34
L63	-87 967.31	2 853 109.40		R63	-81 794.65 2 856 963.91
L64	-88 432.98	2 852 935.27		R64	-81 977.00 2 856 847.74
L65	-89 008.51	2 852 721.37		R65	-82 091.07 2 856 775.08
L66	-89 699.43	2 852 463.55		R66	-82 134.18 2 856 747.83
L67	-90 728.71	2 852 077.60		R67	-82 272.03 2 856 660.70
L68	-90 866.60	2 852 019.01		R68	-82 391.35 2 856 585.27
L69	-91 398.42	2 851 781.61		R69	-82 492.70 2 856 521.21
L70	-91 963.92	2 851 527.88		R70	-82 890.75 2 856 269.60
L71	-92 559.19	2 851 261.86		R71	-83 311.48 2 856 003.16
				R72	-83 892.42 2 855 634.65
				R73	-84 355.26 2 855 341.06
				R74	-84 383.91 2 855 322.92
				R75	-84 993.85 2 854 936.52
				R76	-85 537.71 2 854 591.31
				R77	-86 210.80 2 854 164.78
				R78	-86 467.14 2 854 001.97
				R79	-86 557.70 2 853 944.45
				R80	-87 087.16 2 853 608.69
				R81	-87 477.82 2 853 361.10
				R82	-87 587.17 2 853 300.01
				R83	-87 723.16 2 853 239.49
				R84	-87 819.01 2 853 204.11
				R85	-88 110.13 2 853 095.65
				R86	-88 435.41 2 852 974.46
				R87	-88 439.60 2 852 972.90
				R88	-89 023.33 2 852 755.80
				R89	-89 711.96 2 852 500.08
				R90	-89 765.83 2 852 479.98
				R91	-90 376.58 2 852 252.07
				R92	-90 683.01 2 852 137.01
				R93	-90 882.13 2 852 053.87
				R94	-91 403.71 2 851 820.27
				R95	-91 982.91 2 851 560.61
				R96	-92 571.26 2 851 297.34
				R97	-71 990.54 2 859 730.22

Vel	15	Van	19	P872/15
Sheet		of		

PADRESERWE KOÖRDINATE / ROAD RESERVE CO-ORDINATES					
LINKERKANT/LEFT HAND SIDE			REGTERKANT/RIGHT HAND SIDE		
	Y	X	WG 27°	Y	X
L71	108 077.32	2 851 379.61		R96	108 064.71 2 851 414.89
L72	107 554.78	2 851 136.18		R97	108 061.00 2 851 413.13
L73	107 303.01	2 851 022.19		R98	107 546.68 2 851 173.60
L74	107 276.27	2 851 010.09		R99	107 263.31 2 851 045.44
L75	107 153.52	2 850 962.75		R100	107 142.88 2 850 999.13
L76	107 025.96	2 850 919.16		R101	107 016.08 2 850 955.43
L77	106 896.77	2 850 881.50		R102	106 888.53 2 850 918.27
L78	106 817.46	2 850 861.41		R103	106 693.03 2 850 869.39
L79	106 701.33	2 850 832.56		R104	105 750.48 2 850 653.91
L80	105 759.43	2 850 617.31		R105	105 709.30 2 850 644.01
L81	105 681.06	2 850 595.09		R106	105 680.62 2 850 636.80
L82	105 639.99	2 850 578.92		R107	105 356.18 2 850 480.77
L83	105 341.24	2 850 431.92		R108	105 328.42 2 850 467.42
L84	105 069.26	2 850 298.01		R109	105 073.26 2 850 341.35
L85	104 794.11	2 850 162.53		R110	104 779.25 2 850 196.09
L86	104 792.62	2 850 161.80		R111	104 617.80 2 850 117.77
L87	104 547.97	2 850 041.59		R112	104 514.07 2 850 065.26
L88	104 437.72	2 849 998.35		R113	104 428.60 2 850 034.40
L89	104 345.65	2 849 983.57		R114	104 346.69 2 850 021.18
L90	104 148.45	2 850 027.11		R115	104 157.17 2 850 063.08
L91	104 026.93	2 850 059.26		R116	104 030.21 2 850 096.66
L92	103 952.59	2 850 053.05		R117	103 946.65 2 850 089.68
L93	103 808.61	2 850 007.35		R118	103 804.65 2 850 055.17
L94	103 638.48	2 849 879.08		R119	103 789.76 2 850 043.59
L95	103 187.81	2 849 531.59		R120	103 685.71 2 849 962.68
L96	102 962.32	2 849 357.05		R121	103 176.76 2 849 569.62
L97	102 950.08	2 849 347.64		R122	103 161.08 2 849 557.52
L98	102 918.37	2 849 323.27		R123	102 945.19 2 849 390.94
L99	102 730.52	2 849 178.87		R124	102 905.45 2 849 360.28
L100	102 712.75	2 849 164.63		R125	102 885.62 2 849 344.98
L101	102 642.64	2 849 108.49		R126	102 740.32 2 849 232.01
L102	102 588.62	2 849 065.22		R127	102 684.11 2 849 188.71
L103	102 470.05	2 848 964.93		R128	102 615.40 2 849 135.77
L104	102 410.28	2 848 918.26		R129	102 558.53 2 849 091.96
L105	102 343.68	2 848 867.58		R130	102 419.69 2 848 984.98
L106	102 311.72	2 848 843.47		R131	102 354.31 2 848 934.62
L107	102 232.00	2 848 783.81		R132	102 285.45 2 848 881.56
L108	102 124.08	2 848 703.03		R133	102 283.25 2 848 879.87
L109	102 014.55	2 848 620.03		R134	102 148.49 2 848 776.20
L110	101 907.83	2 848 541.19		R135	101 994.71 2 848 657.91
L111	101 809.99	2 848 467.74		R136	101 853.79 2 848 549.50
L112	101 747.10	2 848 415.96		R137	101 674.15 2 848 412.41
L113	101 668.92	2 848 365.23		R138	101 476.50 2 848 299.19
L114	101 490.79	2 848 264.93		R139	101 263.46 2 848 217.14
L115	101 364.55	2 848 211.70		R140	101 173.92 2 848 196.36
L116	101 308.00	2 848 194.40		R141	101 076.77 2 848 174.23
L117	101 190.11	2 848 158.35		R142	100 958.84 2 848 156.89
L118	101 126.68	2 848 144.87		R143	100 714.51 2 848 120.97
L119	100 831.02	2 848 100.81		R144	100 616.55 2 848 100.40
L120	100 702.07	2 848 081.60		R145	100 470.65 2 848 054.05
L121	100 561.09	2 848 046.08		R146	100 428.46 2 848 040.64

Vel	16	Van	19	P872/15
Sheet		of		

PADRESERWE KOÖRDINATE / ROAD RESERVE CO-ORDINATES					
LINKERKANT/LEFT HAND SIDE			REGTERKANT/RIGHT HAND SIDE		
	Y	X	WG 27°	Y	X
L122	100 482.83	2 848 019.21		R147	100 283.63 2 847 974.96
L123	100 440.76	2 848 004.76		R148	99 928.46 2 847 757.62
L124	100 292.32	2 847 937.19		R149	99 690.66 2 847 616.95
L125	100 214.87	2 847 893.74		R150	99 159.36 2 847 352.71
L126	99 946.43	2 847 724.45		R151	99 049.53 2 847 299.10
L127	99 742.24	2 847 601.31		R152	98 908.39 2 847 226.98
L128	99 644.78	2 847 551.82		R153	98 806.72 2 847 161.09
L129	99 167.45	2 847 316.61		R154	98 686.53 2 847 059.12
L130	98 924.38	2 847 192.74		R155	98 623.38 2 846 991.49
L131	98 826.95	2 847 129.34		R156	98 285.71 2 846 630.93
L132	98 810.12	2 847 115.76		R157	98 183.98 2 846 522.30
L133	98 712.56	2 847 031.80		R158	98 066.45 2 846 396.49
L134	98 328.42	2 846 622.38		R159	97 892.17 2 846 209.93
L135	98 213.63	2 846 499.13		R160	97 816.05 2 846 128.46
L136	98 075.48	2 846 351.10		R161	97 335.78 2 845 614.34
L137	97 902.21	2 846 165.45		R162	97 164.58 2 845 430.93
L138	97 849.49	2 846 108.96		R163	96 979.79 2 845 232.96
L139	97 362.87	2 845 589.03		R164	96 779.95 2 845 019.04
L140	97 176.05	2 845 388.74		R165	96 757.96 2 844 993.31
L141	97 008.49	2 845 209.09		R166	96 748.20 2 844 981.89
L142	96 799.61	2 844 984.96		R167	96 717.91 2 844 945.17
L143	96 783.70	2 844 965.77		R168	96 702.04 2 844 922.66
L144	96 756.16	2 844 932.55		R169	96 655.90 2 844 856.94
L145	96 687.12	2 844 835.92		R170	96 581.51 2 844 723.60
L146	96 630.57	2 844 738.14		R171	96 352.00 2 844 092.10
L147	96 579.82	2 844 626.00		R172	96 330.58 2 844 030.32
L148	96 405.10	2 844 128.51		R173	96 171.24 2 843 570.69
L149	96 354.61	2 843 984.57		R174	96 144.85 2 843 429.38
L150	96 208.46	2 843 567.89		R175	96 149.63 2 843 276.38
L151	96 190.34	2 843 496.41		R176	96 149.85 2 843 269.21
L152	96 181.65	2 843 427.58		R177	96 158.09 2 843 228.72
L153	96 182.68	2 843 290.82		R178	96 216.86 2 842 955.14
L154	96 193.53	2 843 226.41		R179	96 303.21 2 842 567.38
L155	96 199.84	2 843 189.68		R180	96 352.93 2 842 339.49
L156	96 255.31	2 842 948.85		R181	96 370.34 2 842 139.38
L157	96 330.54	2 842 622.23		R182	96 382.40 2 842 000.87
L158	96 370.60	2 842 447.64		R183	96 395.54 2 841 848.14
L159	96 389.59	2 842 345.65		R184	96 395.60 2 841 835.01
L160	96 408.04	2 842 139.66		R185	96 395.99 2 841 756.86
L161	96 418.78	2 842 018.81		R186	96 387.12 2 841 625.69
L162	96 432.89	2 841 862.80		R187	96 375.29 2 841 562.04
L163	96 432.91	2 841 847.04		R188	96 349.47 2 841 481.61
L164	96 433.02	2 841 783.35		R189	96 290.12 2 841 356.50
L165	96 433.06	2 841 746.09		R190	96 155.15 2 841 114.69
L166	96 406.99	2 841 582.99		R191	96 115.45 2 840 992.97
L167	96 377.73	2 841 485.26		R192	96 113.55 2 840 986.41
L168	96 350.75	2 841 407.69		R193	96 112.82 2 840 896.11
L169	96 323.99	2 841 349.52		R194	96 178.13 2 840 142.24
L170	96 268.88	2 841 245.11		R195	96 197.72 2 839 924.62
L171	96 189.20	2 841 099.29		R196	96 200.11 2 839 838.84
L172	96 148.02	2 840 979.75		R197	96 187.37 2 839 743.15

Vel	17	Van	19	P872/15
Sheet		of		

PADRESERWE KOÖRDINATE / ROAD RESERVE CO-ORDINATES						
LINKERKANT/LEFT HAND SIDE			REGTERKANT/RIGHT HAND SIDE			
	Y	X	WG 27°	Y	X	
L173	96 148.08	2 840 932.04		R198	96 033.30	2 839 083.31
L174	96 148.15	2 840 865.25		R199	96 031.09	2 839 073.88
L175	96 215.57	2 840 143.62		R200	95 925.90	2 838 625.58
L176	96 215.99	2 840 139.08		R201	95 826.75	2 838 196.46
L177	96 235.17	2 839 929.68		R202	95 758.83	2 837 897.07
L178	96 237.67	2 839 831.68		R203	95 737.03	2 837 787.49
L179	96 221.21	2 839 719.20		R204	95 736.61	2 837 746.04
L180	96 068.19	2 839 067.11		R205	95 736.23	2 837 701.02
L181	96 066.50	2 839 059.90		R206	95 745.51	2 837 641.48
L182	95 950.91	2 838 558.16		R207	95 753.82	2 837 588.54
L183	95 793.28	2 837 881.93		R208	95 764.04	2 837 563.57
L184	95 777.39	2 837 812.96		R209	95 780.39	2 837 524.70
L185	95 769.82	2 837 740.40		R210	95 901.03	2 837 352.28
L186	95 770.29	2 837 687.44		R211	96 486.83	2 836 593.20
L187	95 787.39	2 837 609.15		R212	96 489.49	2 836 589.75
L188	95 797.11	2 837 583.11		R213	96 736.01	2 836 265.89
L189	95 812.95	2 837 540.66		R214	96 784.26	2 836 186.77
L190	95 871.32	2 837 450.25		R215	96 827.17	2 836 100.25
L191	95 901.14	2 837 412.58		R216	96 929.27	2 835 844.04
L192	96 519.33	2 836 612.14		R217	97 143.75	2 835 305.63
L193	96 525.14	2 836 604.61		R218	97 160.16	2 835 264.75
L194	96 768.56	2 836 289.53		R219	97 192.98	2 835 162.17
L195	96 838.00	2 836 165.15		R220	97 201.78	2 835 115.13
L196	96 882.40	2 836 063.09		R221	97 212.85	2 835 055.87
L197	96 947.64	2 835 899.12		R222	97 219.00	2 834 892.67
L198	97 178.93	2 835 317.82		R223	97 218.05	2 834 876.59
L199	97 219.50	2 835 181.84		R224	97 198.52	2 834 543.01
L200	97 234.74	2 835 148.35		R225	97 182.52	2 834 393.96
L201	97 245.11	2 835 078.21		R226	97 152.58	2 834 261.27
L202	97 254.76	2 835 012.75		R227	97 125.62	2 834 185.21
L203	97 258.39	2 834 928.15		R228	97 078.77	2 834 066.88
L204	97 254.50	2 834 851.81		R229	96 991.74	2 833 866.22
L205	97 244.93	2 834 690.92		R230	96 863.95	2 833 571.60
L206	97 235.88	2 834 539.03		R231	96 834.12	2 833 502.34
L207	97 235.41	2 834 531.05		R232	96 625.71	2 833 018.49
L208	97 226.83	2 834 452.08		R233	96 623.79	2 833 013.23
L209	97 217.76	2 834 372.76		R234	96 612.28	2 832 981.79
L210	97 210.98	2 834 339.22		R235	96 608.63	2 832 968.03
L211	97 203.51	2 834 301.07		R236	96 468.66	2 832 348.36
L212	97 196.61	2 834 266.70		R237	96 454.10	2 832 283.90
L213	97 193.16	2 834 249.47		R238	96 442.27	2 832 231.52
L214	97 173.00	2 834 198.67		R239	96 357.84	2 831 857.62
L215	97 139.82	2 834 115.54		R240	96 331.22	2 831 739.70
L216	97 117.23	2 834 063.36		R241	96 260.87	2 831 431.97
L217	97 053.83	2 833 916.92		R242	96 252.31	2 831 398.56
L218	97 055.58	2 833 902.00		R243	96 233.99	2 831 345.08
L219	97 044.74	2 833 895.92		R244	96 189.60	2 831 252.24
L220	96 900.44	2 833 562.65		R245	95 993.44	2 830 907.86
L221	96 870.91	2 833 494.26		R246	95 866.83	2 830 685.58
L222	96 667.52	2 833 023.29		R247	95 529.30	2 830 096.37
L223	96 665.90	2 833 017.93		R248	95 301.77	2 829 697.87

Vel 18 Van 19 P872/15  
Sheet of

PADRESERWE KOÖRDINATE / ROAD RESERVE CO-ORDINATES					
LINKERKANT/LEFT HAND SIDE			REGTERKANT/RIGHT HAND SIDE		
	Y	X	WG 27°	Y	X
L224	96 636.59	2 832 920.91		R249	95 299.04 2 829 693.09
L225	96 508.72	2 832 355.92		R250	95 220.90 2 829 556.91
L226	96 491.16	2 832 278.35		R251	95 202.03 2 829 527.47
L227	96 481.81	2 832 236.95		R252	95 143.69 2 829 435.50
L228	96 395.93	2 831 856.86		R253	95 043.39 2 829 322.39
L229	96 367.58	2 831 731.34		R254	94 716.98 2 829 002.75
L230	96 303.45	2 831 443.77		R255	94 517.27 2 828 807.57
L231	96 293.15	2 831 403.98		R256	94 358.73 2 828 652.62
L232	96 277.23	2 831 351.06		R257	94 207.48 2 828 506.40
L233	96 250.26	2 831 284.49			
L234	96 222.80	2 831 234.52			
L235	96 027.35	2 830 892.43			
L236	95 898.29	2 830 666.53			
L237	95 559.26	2 830 072.41			
L238	95 317.06	2 829 648.91			
L239	95 220.71	2 829 480.59			
L240	95 190.52	2 829 433.30			
L241	95 181.92	2 829 419.28			
L242	95 136.01	2 829 362.23			
L243	95 097.75	2 829 322.73			
L244	94 522.63	2 828 759.04			
L245	94 239.65	2 828 485.02			
L246	94 239.20	2 828 470.82			

Vel	19	Van	19	P872/15
Sheet		of		







# **WARNING!!!**

## **To all suppliers and potential suppliers of goods to the Government Printing Works**

The Government Printing Works would like to warn members of the public against an organised syndicate(s) scamming unsuspecting members of the public and claiming to act on behalf of the Government Printing Works.

One of the ways in which the syndicate operates is by requesting quotations for various goods and services on a quotation form with the logo of the Government Printing Works. Once the official order is placed the syndicate requesting upfront payment before delivery will take place. Once the upfront payment is done the syndicate do not deliver the goods and service provider then expect payment from Government Printing Works.

Government Printing Works condemns such illegal activities and encourages service providers to confirm the legitimacy of purchase orders with GPW SCM, prior to processing and delivery of goods.

To confirm the legitimacy of purchase orders, please contact:

Renny Chetty (012) 748-6375 ([Renny.Chetty@gpw.gov.za](mailto:Renny.Chetty@gpw.gov.za)),

Anna-Marie du Toit (012) 748-6292 ([Anna-Marie.DuToit@gpw.gov.za](mailto:Anna-Marie.DuToit@gpw.gov.za)) and

Siraj Rizvi (012) 748-6380 ([Siraj.Rizvi@gpw.gov.za](mailto:Siraj.Rizvi@gpw.gov.za))

Printed by and obtainable from the Government Printer, Bosman Street, Private Bag X85, Pretoria, 0001  
Contact Centre Tel: 012-748 6200. eMail: info.egazette@gpw.gov.za  
Publications: Tel: (012) 748 6053, 748 6061, 748 6065