



Government Gazette Staatskoerant

REPUBLIC OF SOUTH AFRICA
REPUBLIEK VAN SUID AFRIKA

Regulation Gazette

No. 10612

Regulasiekoerant

Vol. 612

17 June
Junie 2016

No. 40076

N.B. The Government Printing Works will not be held responsible for the quality of "Hard Copies" or "Electronic Files" submitted for publication purposes

ISSN 1682-5843



9 771682 584003

40076



AIDS HELPLINE: 0800-0123-22 Prevention is the cure

Government Printing Works

Notice submission deadlines

Government Printing Works has over the last few months implemented rules for completing and submitting the electronic Adobe Forms when you, the customer, submit your notice request.

In line with these business rules, GPW has revised the notice submission deadlines for all gazettes. Please refer to the GPW website www.gpwonline.co.za to familiarise yourself with the new deadlines.

CANCELLATIONS

Don't forget!

Cancellation of notice submissions are accepted by GPW according to the deadlines stated in the table above. Non-compliance to these deadlines will result in your request being failed. **Please pay special attention to the different deadlines for each gazette.**

Please note that any notices cancelled after the cancellation deadline will be published and charged at full cost.

Requests for cancellation must be sent by the original sender of the notice and must accompanied by the relevant notice reference number (N-) in the email body.

AMENDMENTS TO NOTICES

take note!

With effect **from 01 October**, GPW will not longer accept amendments to notices. The cancellation process will need to be followed and a new notice submitted thereafter for the next available publication date.

CUSTOMER INQUIRIES



Many of our customers request immediate feedback/confirmation of notice placement in the gazette from our Contact Centre once they have submitted their notice – While GPW deems it one of their highest priorities and responsibilities to provide customers with this requested feedback and the best service at all times, we are only able to do so once we have started processing your notice submission.

GPW has a **2-working day turnaround time for processing notices** received according to the business rules and deadline submissions.

Please keep this in mind when making inquiries about your notice submission at the Contact Centre.

PROOF OF PAYMENTS



GPW reminds you that all notice submissions **MUST** be submitted with an accompanying proof of payment (PoP) or purchase order (PO). If any PoP's or PO's are received without a notice submission, it will be failed and your notice will not be processed.

When submitting your notice request to submit.egazette@gpw.gov.za, please ensure that a purchase order (GPW Account customer) or proof of payment (non-GPW Account customer) is included with your notice submission. All documentation relating to the notice submission must be in a single email.

A reminder that documents must be attached separately in your email to GPW. (In other words, your email should have an Adobe Form plus proof of payment/purchase order – 2 separate attachments – where notice content is applicable, it should also be a 3rd separate attachment).

REMINDER OF THE GPW BUSINESS RULES

- Single notice, single email – with proof of payment or purchase order.
- All documents must be attached separately in your email to GPW.
- 1 notice = 1 form, i.e. each notice must be on a separate form
- Please submit your notice **ONLY ONCE**.
- Requests for information, quotations and inquiries must be sent to the Contact Centre **ONLY**.
- The notice information that you send us on the form is what we publish. Please do not put any instructions in the email body.

IMPORTANT NOTICE:

THE GOVERNMENT PRINTING WORKS WILL NOT BE HELD RESPONSIBLE FOR ANY ERRORS THAT MIGHT OCCUR DUE TO THE SUBMISSION OF INCOMPLETE / INCORRECT / ILLEGIBLE COPY.

No FUTURE QUERIES WILL BE HANDLED IN CONNECTION WITH THE ABOVE.

Contents

<i>No.</i>		<i>Gazette No.</i>	<i>Page No.</i>
GOVERNMENT NOTICES • GOEWERMENTSKENNISGEWINGS			
Agriculture, Forestry and Fisheries, Department of/ Landbou, Bosbou en Visserye, Departement van			
R. 725	Agricultural Product Standards Act (119/1990): Regulations relating to the Grading, Packing and Marking of Apples intended for sale in the Republic of South Africa	40076	9
R. 726	Agricultural Product Standards Act (119/1990): Correction Notice: Regulations relating to the grading, packing and marking of Table Grapes intended for sale in the Republic of South Africa	40076	26
R. 727	Agricultural Product Standards Act (119/1990): Correction Notice: Regulations relating to the Grading, Packing and Marking of Pears intended for sale in the Republic of South Africa	40076	26
South African Revenue Service/ Suid-Afrikaanse Inkomstediens			
R. 728	Customs and Excise Act, 1964: Amendment of Schedule No. 2 (No. 2/1/375).....	40076	27
R. 728	Doeane- en Aksynswet, 1964: Wysiging van Bylae No. 2 (No. 2/1/375).....	40076	37

NOTICE SUBMISSION DEADLINES FOR ORDINARY GAZETTES

Government Gazette Type	Publication Frequency	Publication Date	Submission Deadline	Cancellations Deadline
National Gazette	Weekly	Friday	Friday 15h00 for next Friday	Tuesday, 12h00 - 3 days prior to publication
Regulation Gazette	Weekly	Friday	Friday 15h00, to be published the following Friday	Tuesday, 12h00 - 3 days prior to publication
Petrol Price Gazette	As required	First Wednesday of the month	One week before publication	3 days prior to publication
Road Carrier Permits	Weekly	Friday	Thursday 15h00, to be published the following Friday	3 days prior to publication
Unclaimed Monies (justice, labour or lawyers)	January / As required 2 per year	Any	15 January / As required	3 days prior to publication
Parliament (acts, white paper, green paper)	As required	Any		3 days prior to publication
Manuals	As required	Any	None	None
Legal Gazettes A, B and C	Weekly	Friday	One week before publication	Tuesday, 12h00 - 3 days prior to publication
Tender Bulletin	Weekly	Friday	Friday 15h00 for next Friday	Tuesday, 12h00 - 3 days prior to publication
Gauteng	Weekly	Wednesday	Two weeks before publication	3 days after submission deadline
Eastern Cape	Weekly	Monday	One week before publication	3 days prior to publication
Northern Cape	Weekly	Monday	One week before publication	3 days prior to publication
North West	Weekly	Tuesday	One week before publication	3 days prior to publication
KwaZulu-Natal	Weekly	Thursday	One week before publication	3 days prior to publication
Limpopo	Weekly	Friday	One week before publication	3 days prior to publication
Mpumalanga	Weekly	Friday	One week before publication	3 days prior to publication
Gauteng Liquor License Gazette	Monthly	Wednesday before the First Friday of the month	Two weeks before publication	3 days after submission deadline
Northern Cape Liquor License Gazette	Monthly	First Friday of the month	Two weeks before publication	3 days after submission deadline
National Liquor License Gazette	Monthly	First Friday of the month	Two weeks before publication	3 days after submission deadline
Mpumalanga Liquor License Gazette	2 per month	Second & Fourth Friday	One week before	3 days prior to publication

GOVERNMENT PRINTING WORKS CONTACT INFORMATION**Physical Address:**

Government Printing Works
149 Bosman Street
Pretoria

Postal Address:

Private Bag X85
Pretoria
0001

GPW Banking Details:

Bank: ABSA Bosman Street
Account No.: 405 7114 016
Branch Code: 632-005

For Gazette and Notice submissions: Gazette Submissions:
For queries and quotations, contact: Gazette Contact Centre:

E-mail: submit.egazette@gpw.gov.za
E-mail: info.egazette@gpw.gov.za
Tel: 012-748 6200

Contact person for subscribers: Mrs M. Toka:

E-mail: subscriptions@gpw.gov.za
Tel: 012-748-6066 / 6060 / 6058
Fax: 012-323-9574

LIST OF TARIFF RATES FOR PUBLICATION OF NOTICES

COMMENCEMENT: 1 APRIL 2016

NATIONAL AND PROVINCIAL

Notice sizes for National, Provincial & Tender gazettes 1/4, 2/4, 3/4, 4/4 per page. Notices submitted will be charged at R1000 per full page, pro-rated based on the above categories.

Pricing for National, Provincial - Variable Priced Notices		
Notice Type	Page Space	New Price (R)
Ordinary National, Provincial	1/4 - Quarter Page	250.00
Ordinary National, Provincial	2/4 - Half Page	500.00
Ordinary National, Provincial	3/4 - Three Quarter Page	750.00
Ordinary National, Provincial	4/4 - Full Page	1000.00

EXTRA-ORDINARY

All Extra-ordinary National and Provincial gazette notices are non-standard notices and attract a variable price based on the number of pages submitted.

The pricing structure for National and Provincial notices which are submitted as **Extra ordinary submissions** will be charged at **R3000** per page.

GOVERNMENT PRINTING WORKS BUSINESS RULES

Government Printing Works has established rules for submitting notices in line with its electronic notice processing system, which requires the use of electronic Adobe Forms. Please ensure that you adhere to these guidelines when completing and submitting your notice submission.

1. No hand written notices will be accepted for processing, this includes Adobe forms which have been completed by hand.
2. Notices can only be submitted in Adobe electronic form format, to the email submission address submit.egazette@gpw.gov.za. All notice submissions not on Adobe electronic forms will be rejected.
3. When submitting your notice request, please ensure that a purchase order (GPW Account customer) or proof of payment (non-GPW Account customer) is included with your notice submission. All documentation relating to the notice submission must be in a single email and must be attached separately. (In other words, your email should have an Adobe Form plus proof of payment/purchase order as 2 separate attachments. Where notice content is applicable, it should also be a 3rd separate attachment).
4. Notices brought to GPW by "walk-in" customers on electronic media can only be submitted in Adobe electronic form format.
5. All "walk-in" customers with notices that are not on electronic Adobe forms will be routed to the Contact Centre where they will be assisted to complete the forms in the required format. Where a customer walks into GPW with a stack of hard copy notices delivered by a messenger on behalf of any organisation e.g. newspaper publisher, the messenger will be referred back to the sender as the submission does not adhere to the submission rules.
6. For National or Provincial gazette notices, the following applies:
 - 6.1 These notices must be accompanied by an electronic Z95 or Z95Prov Adobe form
 - 6.2 The notice content (body copy) MUST be a separate attachment.
7. The current cut-off of all Gazette's remains unchanged for all channels. (Refer to the GPW website for submission deadlines – www.gpwonline.co.za)
8. Incorrectly completed forms and notices submitted in the wrong format will be rejected to the customer to be corrected and resubmitted. Assistance will be available through the Contact Centre should help be required when completing the forms. (012-748 6200 or email info.egazette@gpw.gov.za)
9. All re-submissions will be subject to the standard cut-off times.
10. All submissions and re-submissions that miss the cut-off will be rejected to the customer to be submitted with a new publication date.
11. The electronic Adobe form will be taken as the primary source for the notice information to be published. Instructions that are on the email body or covering letter that contradicts the notice form content will not be considered.
12. Requests for Quotations (RFQs) should be received by the Contact Centre at least 24 hours before the submission deadline for that specific publication.

APPROVAL OF NOTICES

13. Any notices other than legal notices are subject to the approval of the Government Printer, who may refuse acceptance or further publication of any notice.

GOVERNMENT PRINTER INDEMNIFIED AGAINST LIABILITY

The Government Printer indemnified against liability

14. The Government Printer will assume no liability in respect of—
 - 14.1 any delay in the publication of a notice or publication of such notice on any date other than that stipulated by the advertiser;

- 14.2 erroneous classification of a notice, or the placement of such notice in any section or under any heading other than the section or heading stipulated by the advertiser;
- 14.3 any editing, revision, omission, typographical errors or errors resulting from faint or indistinct copy.

LIABILITY OF ADVERTISER

15. Advertisers will be held liable for any compensation and costs arising from any action which may be instituted against the Government Printer in consequence of the publication of any notice.

COPY

16. Copy of notices must be submitted using the relevant Adobe PDF form for the type of notice to be placed and may not constitute part of any covering letter or document.
17. Where the copy is part of a separate attachment document for **Z95**, **Z95Prov** and **TForm03**
- 17.1 Copy of notices must be supplied in a separate document and may not constitute part of any covering letter, purchase order, proof of payment or other attached documents.
- The content document should contain only one notice. (You may include the different translations of the same notice in the same document).
- 17.2 The notice should be set on an A4 page, with margins and fonts set as follows:
- Page size = A4 Portrait with page margins: Top = 40mm, LH/RH = 16mm, Bottom = 40mm;
Use font size: Arial or Helvetica 10pt with 11pt line spacing;
- Page size = A4 Landscape with page margins: Top = 16mm, LH/RH = 40mm, Bottom = 16mm;
Use font size: Arial or Helvetica 10pt with 11pt line spacing;

PAYMENT OF COST

18. The Request for Quotation for placement of the notice should be sent to the Gazette Contact Centre as indicated above, prior to submission of notice for advertising.
19. Payment should then be made, or Purchase Order prepared based on the received quotation, prior to the submission of the notice for advertising as these documents i.e. proof of payment or Purchase order will be required as part of the notice submission, as indicated earlier.
20. Where there is any doubt about the cost of publication of a notice, and in the case of copy, an enquiry, accompanied by the relevant copy, should be addressed to the Gazette Contact Centre, Government Printing Works, PrivateBag X85, Pretoria, 0001 email: info.egazette@gpw.gov.za before publication.
21. Overpayment resulting from miscalculation on the part of the advertiser of the cost of publication of a notice will not be refunded, unless the advertiser furnishes adequate reasons why such miscalculation occurred. In the event of underpayments, the difference will be recovered from the advertiser, and future notice(s) will not be published until such time as the full cost of such publication has been duly paid in cash or electronic funds transfer into the Government Printing Works banking account.
22. In the event of a notice being cancelled, a refund will be made only if no cost regarding the placing of the notice has been incurred by the Government Printing Works.
23. The Government Printer reserves the right to levy an additional charge in cases where notices, the cost of which has been calculated in accordance with the List of Fixed Tariff Rates, are subsequently found to be excessively lengthy or to contain overmuch or complicated tabulation.

PROOF OF PUBLICATION

24. Copies of the Government Gazette which may be required as proof of publication, may be ordered from the Government Printer at the ruling price. The Government Printer will assume no liability for any failure to post such Government Gazette(s) or for any delay in despatching it them

IMPORTANT ANNOUNCEMENT

Closing times **PRIOR TO PUBLIC HOLIDAYS** for
**GOVERNMENT NOTICES, GENERAL NOTICES,
 REGULATION NOTICES AND PROCLAMATIONS** 2016

The closing time is 15:00 sharp on the following days:

- 16 March, Wednesday for the issue of Thursday 24 March 2016
- 23 March, Wednesday for the issue of Friday 1 April 2016
- 21 April, Thursday for the issue of Friday 29 April 2016
- 28 April, Thursday for the issue of Friday 6 May 2016
- 9 June, Thursday for the issue of Friday 17 June 2016
- 4 August, Thursday for the issue of Friday 12 August 2016
- 8 December, Thursday for the issue of Thursday 15 December 2016
- 22 December, Thursday for the issue of Friday 30 December 2016
- 29 December, Thursday for the issue of Friday 6 January 2017

BELANGRIKE AANKONDIGING

Sluitingstye **VOOR VAKANSIEDAE** vir
**GOEWERMENTS-, ALGEMENE- & REGULASIE-
 KENNISGEWINGS ASOOK PROKLAMASIES** 2016

Die sluitingstyd is stiptelik 15:00 op die volgende dae:

- 16 Maart, Woensdag vir die uitgawe van Donderdag 24 April 2016
- 23 Maart, Woensdag vir die uitgawe van Vrydag 1 April 2016
- 21 April, Donderdag vir die uitgawe van Vrydag 29 April 2016
- 28 April, Donderdag vir die uitgawe van Vrydag 6 Mei 2016
- 9 Junie, Donderdag vir die uitgawe van Vrydag 17 Junie 2016
- 4 Augustus, Donderdag vir die uitgawe van Vrydag 12 Augustus 2016
- 8 Desember, Donderdag vir die uitgawe van Donderdag 15 Desember 2016
- 22 Desember, Donderdag vir die uitgawe van Vrydag 30 Desember 2016
- 29 Desember, Donderdag vir die uitgawe van Vrydag 6 Januarie 2017

GOVERNMENT NOTICES • GOEWERMENTSKENNISGEWINGS

DEPARTMENT OF AGRICULTURE, FORESTRY AND FISHERIES

NO. R. 725

17 JUNE 2016

AGRICULTURAL PRODUCT STANDARDS ACT, 1990
(ACT No. 119 OF 1990)**REGULATIONS RELATING TO THE GRADING, PACKING AND MARKING OF
APPLES INTENDED FOR SALE IN THE REPUBLIC OF SOUTH AFRICA**

The Minister of Agriculture, Forestry and Fisheries has, under section 15 of the Agricultural Product Standards Act, 1990 (Act No. 119 of 1990) --

- (a) made the regulations in the Schedule;
- (b) determined that the said regulations shall come into operation on date of publication; and
- (c) read together with section 3(2) of the said Act, repealed the regulations published by Government Notice No. R. 590 of 29 May 2009 with effect from the said date of commencement.

SCHEDULE**Definitions**

1. In these regulations, unless inconsistent with the text, any word or expression to which a meaning has been assigned in the Act, shall have a corresponding meaning, and --

"**Arthropoda**" means any stage in the life cycle of an invertebrate member of the Animal Kingdom that is bilaterally symmetrical with a segmented body, with jointed limbs that are paired and a chitinous external skeleton;

"**apple**" means the fruit of the cultivars which are grown from the species *Malus sylvestris* and *Malus niedzwetzkyana*;

"**bitterpit**" a physiological state characterized by light yellow discoloured spots with darkbrown corky layer;

"**blemish**" means any external skin defect, excluding sunburn, russetting, rough marks, wind marks and hail marks on the surface of the apple, which detrimentally affects the appearance of the apple;

"**bruise**" means any bruise which shows an indentation or results in discoloration directly under the skin;

"**calcium spot**" small darkbrown spots visible on the lenticels of the apple;

"**cork Spot**" brown, corky lesions in the fruit flesh, mainly toward the calyx end;

"**cold damage**" means any damage caused by too low temperatures, excluding superficial cold storage scald;

"**consignment**" means --

- (a) a quantity of apples of the same cultivar, belonging to the same owner, and delivered at the same time under cover of the same delivery note, consignment note or receipt note, or delivered by the same vehicle, or
- (b) in the case of a quantity of apples that is divided into different cultivars, classes, counts, count groups, pallet loads, trade marks or types of packaging, every quantity of each of the different cultivars, classes, counts, pallet loads, trade marks or types of packaging;

"container" means the immediate container in which apples are packed directly and outer containers in which prepacked units are packed, excluding prepacked units;

core rot means --

- (a) progressive core rot (wet) that extends into the flesh of the apple or non-progressive core rot (dry) which extends more than 10 millimetres into the flesh of the apple; and
- (b) non-progressive core rot (dry) which doesn't extend more than 10 millimetres into the flesh of the apple;

"count" means the number of apples packed into a container;

"decay" means a state of decomposition, fungus development excluding stem, internal insect infestation or internal insect damage with signs of tissue collapse or insect excrement, which detrimentally affects the quality of the apple;

"diameter" means the largest diameter measured at right angles to the longitudinal axis of the apple;

"dirty fruit" means apples that are visible soiled or marked with foreign matter;

"foreign matter" means any material or substance not normally present in, on or between the apples;

"Fusicladium" black spots, initially velvety becoming corky in texture;

"hail marks" means marks which have been caused by hail, which have healed completely or become callused and which exceed 2 millimetres in depth;

"injury" means any wound which exposes the flesh, with the exception of such wounds which have healed completely or have become callused or skin punctures on York Imperial apples;

"inspector" means the Executive Officer or an officer under his or her control, or an Assignee or a qualified employee of an Assignee;

"internal breakdown" means a state of physiological deterioration affecting the internal quality of the apple detrimentally;

"prepacked unit" means any single packing unit for presentation such as to the consumer consisting apples and the packaging into which the apples were put before being offered for sale;

"the Act" means the Agricultural Product Standards Act, 1990 (Act No. 119 of 1990);

"weight" means mass in grams measured on a calibrated balance; and

"well-formed" means that the apples have a shape which is normally typical of the cultivar concerned.

Control over the sale of apples

2. (1) No person shall sell apples in the Republic of South Africa *other than imported apples referred to in subregulation (3)* --

- (a) unless the apples are sold according to the classes referred to in regulation 3;
- (b) unless the apples comply with the Standards for apples regarding quality referred to in regulation 4;
- (c) unless such apples are packed in a container and in accordance with the packing requirements as set out in regulations 5, 6, 7, 8 and 9

3

- (d) provision concerning presentation as set out in regulation 10;
- (e) unless such apples are marked with the particulars and in the manner prescribed in regulation 11; and

(2) Apples sold by vendors in streets (excluding retailers and supermarkets) and other public places are excluded from the stipulations in subregulation 2(1) (a), (b), (c), (d), and (e). Provided that if such apples are marked in terms of item 11 and 12 it shall be subjected to the aforementioned stipulations.

(3) Imported apples may be exempted from the provisions of subitem (1), provided that the apples --

- (a) comply with either the Codex, UNECE (United Nations Economic Commission for Europe) or OECD (Organisation for Economic Co-operation and Development) standards; and
- (b) according to bilateral agreement accompanied by certificate issued by a relevant government authority responsible for quality control of fresh fruit and vegetables and in which it is certified that the quality of the apples as verified through inspection conforms to the relevant standard;

(4) The Executive Officer may grant written exemption, entirely or partially, to any person on such conditions as he or she deems necessary, from the provisions of subitem (1).

QUALITY STANDARDS

Classes for apples

3. There are three classes of apples, namely Class 1, Class 2 and Lowest Class.

Standards for apples

4. (1) Apples shall comply with the specifications set out in Tables 1, 2, 3 and 4.
- (2) No consignment of apples "Class 1" or "Class 2" or Lowest Class shall contain --
- (a) any organisms which may be a source of danger to the human being; and
 - (b) Arthropoda infestation including the organisms which according to paragraph (a) do not form part of plant injurious organisms, excluding organisms which may be a source of danger to the human being, on more than 3% of the apples or three free live Arthropoda per pallet load or part thereof in the consignment: Provided that it does not exceed a maximum of one Arthropoda per container.

PACKING REQUIREMENTS FOR APPLES

Requirements for containers

5. Containers in which apples are packed shall --
- (a) be clean, dry, undamaged and suitable;
 - (b) not impart a foreign taste or odour or any substance which may be injurious to the apples;
 - (c) be free from any visible sign of fungus growth;
 - (d) be free from Arthropoda infestation; and
 - (e) be strong and rigid enough to ensure that the original shape be retained and not bulge out, dent in, break or tear, to the extent that apples are damaged or are at risk of being damaged, during normal storage, handling or transport.

Packing requirements

6. (a) Only apples of the same quality, cultivar, ripeness and size shall be packed together in the same container.
- (b) Class 1 apples in the same container must be uniform in colour.
- (c) Each container shall be packed firmly and to capacity.
- (d) Apples shall be sized by diameter or weight: Provided that sizing shall be optional in the case of Class 2 and Lowest Class apples.
- (e) If apples are packed in prepacked units, such units shall be packed in a suitable manner in an outer container: Provided that the prepacked units are clean, dry, undamaged and suitable.

Packing material

7. If packing material is used inside the containers, such packing material shall be clean, dry, odourless, not transmit any harmful substance injurious to apples.

Stacking of containers on pallets

8. If containers containing apples are palletised --
- (a) the pallet shall be clean, undamaged and suitable;
- (b) local pallets may have visible signs of fungus growth and Arthropoda infestation. This is only applicable to export. Imports will be covered by the ISPM 15;
- (c) the containers shall be stacked firmly and square with each other and the pallet;
- (d) only containers of the same dimensions shall be stacked in the same layer on the pallet; and
- (e) the containers shall not be stacked upside-down on the pallet.

Strapping of the pallet loads

9. (1) A pallet load of containers shall be strapped in a suitable manner.
- (2) If containers without lids are being used, a suitable covering shall be placed on top of the pallet load of containers, before the pallet load is strapped.

Provisions concerning presentation

10. (1) Uniformity
- The contents of each package must be uniform and contain only apples of the same origin, variety, quality and size (if sized) and the same degree of ripeness. The visible part of the contents of the package must be representative of the entire contents except for mixed sizes and varieties.

MARKING REQUIREMENTS FOR APPLES

11. (1) Each container containing apples, shall be marked clearly, indelibly, legibly and not untidy, upside-down or askew in any short or long side of the lid or container, where lids are not used, by printing, stamping or by means of specially designed labels with the following particulars: Provided that all particulars shall be grouped on the same side:
- (a) The expression "Apples". The colour indication "Red", "Green" and "Bicolour" is optional.

5

- (b) The appropriate cultivar/variety.
 - (c) The applicable minimum and maximum diameter: Provided that it --
 - (aa) may be replaced with the applicable count, preceded by the expression "Count", in the case of apples packed in layers; or
 - (bb) shall be replaced with the applicable minimum diameter followed by the expression "and over", in the case of Class 2 or Lowest Class apples which are not sized;
- or
- (d) The applicable minimum and maximum weight: Provided that it --
 - (aa) may be replaced with the applicable count, preceded by the expression "Count", in the case of apples packed in layers; or
 - (bb) shall be replaced with the applicable minimum weight followed by the expression "and over", in the case of Class 2 or Lowest Class apples which are not sized.
 - (e) The appropriate class in accordance with regulation 3.
 - (f) The name, physical address and the contact of the producer or owner of the contents of the container.
 - (g) The country of origin. Provided that no abbreviations or the expression "South Africa" on its own shall be used (e.g. "Produce of South Africa", "Produced in South Africa", or any other similar expression).
 - (h) Indication of date code/date on at least 90% of the containers and prepacked containers: Provided that if the packing date is expressed in date code, it shall be registered with the Executive Officer.

(2) Subject to the provisions of subitem (1), each outer container and bulk container containing prepacked units shall be marked with an indication of the total number of prepacked units per outer container: Provided that if the total number of prepacked units is visible from the outside, it does not have to be indicated on the outer container.

(3) Prohibition of false or misleading description for products- No person shall use any name, word, expression, reference, particulars or indication in any manner, either by itself or in conjunction with any other verbal, written, printed, illustrated or visual material, in connection with the sale of a product in a manner that conveys or creates or is likely to convey or create a false or misleading impression as to the nature, substance, quality or other properties, or the class or grade, origin, identity or manner or place of production, of that product shall be indicated on the same side as the particulars in subitem (1).

- (4) The net weight must be indicated on jumble cartons.
- (5) If apples are displayed for sale in loose quantities --
 - (a) any quantity of a particular class, size group or cultivar shall not be displayed mixed with apples of any other class, size group or cultivar; and
 - (b) if imported, the country of origin of the apples shall be indicated in clear, legible block letters on a notice board placed at the quantity of apples.

PROHIBITED PARTICULARS

12. No wording, illustration or other means of expression which constitutes a misrepresentation or which directly or by implication, creates a misleading impression of the contents, shall appear on a container which contains apples.

Display

13. (1) If apples in containers for sale are being displayed, such container shall be placed in such a manner to ensure that the prescribed markings on the containers or labels, as the case may be, are clearly visible.

(2) If apples are displayed for sale other than in containers, --

- (a) any quantity thereof of a particular class, size group or cultivar, as the case may be, shall not be so displayed mixed with apples of any other class, size group or cultivar; and
- (b) the class and cultivar of such quantity of apples shall be displayed in clear legible block letters of at least 10 mm in height on a notice board prominently placed at such quantity of apples.

SAMPLING PROCEDURES**Obtaining a sample of the consignment**

14. At least two per cent of the containers in a consignment shall be drawn at random for inspection purposes and an inspector shall be satisfied that the containers so drawn are representative of the consignment concerned: Provided that in the case of bulk containers, at least 25 per cent of the bulk containers or two bulk containers, whichever is the greatest, shall be drawn at random as sample of the consignment.

Obtaining an inspection sample

15. An inspection sample shall --

- (a) in the case of containers, excluding bulk containers, be drawn from each container obtained in accordance with item 15 and shall, in the case of --
 - (i) containers with 50 apples or less, consist of the entire contents of the container; or
 - (ii) containers with more than 50 apples, consist of 50 apples drawn at random from the container;
- (b) in the case of bulk containers, be obtained by randomly drawing three quantities of 50 apples each, respectively from the middle and two opposite corners, from each bulk container obtained in accordance with item 14; and
- (c) for the determination of uniformity in size, in the case of apples --
 - (i) packed in layers, with or without trays, be obtained by randomly drawing a single layer of apples from each container obtained in accordance with item 14; and
 - (ii) packed in any packaging consists of the entire contents of each container obtained in accordance with item 14.

Deviating sample

16. If an inspector should notice during the process of drawing the random sample or during the inspection, that some of the containers derived from any part of the pallet load, truck load or consignment, contain apples which are noticeably inferior to or differ from the contents of containers which represent the

remainder of the pallet load, truck load or consignment, the inspection result shall only be based on the containers derived from the deviating portion of the pallet load, truck load or consignment, and further samples required for inspection shall be drawn from this deviating portion.

METHOD OF INSPECTION

Determination of the external appearance, condition and size

17. For the purpose of analysis in respect of external appearance, condition and size, the whole sample drawn in accordance with regulation 14, shall be used.

Determination of uniformity in size

18. The uniformity in size of apples in the same container is determined by:

- (a) Selecting the 10 apples from the sample drawn in regulation 15 which prominently displays the greatest difference in diameter.
- (b) Tabulating the diameter of the 10 apples in one millimetre grading.
- (c) If three or more apples per any count in a sample of 10 apples drawn, do not comply with the variation in diameter, the count or counts shall be deemed not to be suitable.

Determination of internal quality defects including core rot

19. The internal quality defects of apples shall be determined by selecting 10 apples in the sample drawn in terms of regulation 14, which in the opinion of the inspector are those most likely to have been affected and by bisecting them on their equatorial axes and calculating the number of such apples affected, as a percentage of the total number of apples selected.

Determination of minimum ripeness

20. The minimum ripeness for apples shall be determined as follows:

- (i) Take as working sample 10 apples at random from the inspection sample obtained in accordance with sub-regulation 15(a).
- (ii) Cover the cut surface of one half of each of the 10 bisected apples evenly with an iodine solution of one per cent.
- (iii) Leave the apple halves for at least one minute before the results are recorded.
- (iv) Determine the percentage surface of each of the apple halves which did not turn black in colour.
- (v) Add up the percentage obtained from all the apple halves and divide the figure by the number of readings.
- (vi) Compare the results obtained in subparagraph (iv) with the minimum requirements in Table 3 for the particular cultivar.
- (vii) The inspection sample shall be regarded as mature if the starch content of the apples at least comply with the minimum average percentage starch conversion for the cultivar concerned, as set out in Table 3.

Determination of minimum diameter size

21. (a) The minimum diameter size of apples shall be determined by using a suitable apparatus with round openings of which the diameter coincides with the minimum diameter prescribed in item (d) in Table 1.

- (b) The minimum size shall be determined as follows:
- (i) Take as working sample the apples that noticeably appear to be the smallest in diameter from the inspection sample obtained in accordance with regulation 15(a).
 - (ii) Place the apples of the cultivar concerned gently, one after the other, with their stems facing upwards on the corresponding opening of the apparatus mentioned in paragraph (a).
 - (iii) If an apple falls through the prescribed size of the opening through the action of its own gravity, the apple is deemed to be too small.
 - (iv) Calculate the number of apples thus found to be too small as a percentage of the total number of apples in the inspection sample.

Determination of minimum and maximum weight

22. (a) The minimum weight of apples shall be determined by using a suitable calibrated balance.
- (b) The minimum weight shall be determined as follows:
- (i) Take as working sample the apples that noticeably appear to be the smallest/largest from the inspection sample obtained in accordance with subitem 15(a).
 - (ii) Place each apple of the working sample gently, individually one after the other, on the balance mentioned in (a).
 - (iii) If an apple weighs less than the prescribed minimum weight, the apple is deemed to be too small.
 - (iv) Calculate the number of apples thus found to be too small/large as a percentage of the total number of apples in the inspection sample.

Determination of over-maturity/overripeness

23. (a) Overripeness of all apple cultivars in a consignment shall be determined with a handheld penetrometer or a penetrometer mounted on a drill stand with a plunger of 11,2 millimeter in diameter.
- (b) Overripeness shall be determined as follows:
- (i) Take as working sample 10 apples at random from the inspection sample obtained in accordance with subitem 15(a): Provided that such apples shall be free from defects such as sunburn and pests or disease damage, which may have affected the normal ripening process.
 - (ii) Remove a thin slice of skin from opposite sides of each apple.
 - (iii) Hold the apple firm with one hand: Provided that if a handheld penetrometer is used, your hand should rest on a rigid surface.
 - (iv) Zero the penetrometer and place the plunger head of 11,2 millimeter in diameter on the spot where the skin was removed.
 - (v) Apply steady downward pressure on the penetrometer until the plunger has penetrated the flesh of the apple up to the depth mark of the plunger.
 - (vi) Remove the plunger and note the reading on the penetrometer, to one decimal.
 - (vii) Repeat the process on the opposite side of the same apple after first zeroing the penetrometer.

- (viii) Calculate the average of the two pressure readings of each apple.
- (c) The apples shall not be regarded as overripe, if they conform to the minimum pressure readings for the cultivar concerned as set out in Table 3.

OFFENCE AND PENALTIES

24. Any person who contravenes or fails to comply with the provisions of these regulations, shall be guilty of an offence and may upon conviction be liable to a fine or to imprisonment in terms of section 11 of Act No. 119 of 1990.

TABLE 1: QUALITY STANDARDS FOR APPLES

Quality factor	Class 1	Class 2	Lowest Class
(a) Appearance	Sound and attractive according to cultivar requirements	Sound and fairly attractive and true to cultivar requirements	-
(b) Shape	Well-formed according to cultivar requirements	-	-
(c) Colour (all cultivars)	As set out in Table 5	As set out in Table 5	-
(d) Minimum size/diameter	80 g or 54 mm	80 g or 54 mm	80 g or 54 mm
(e) Size groups (diameter if jumble packed)			
(aa) Extra large	Larger than 80 mm	Larger than 80 mm	-
(bb) Large	70 mm to 80 mm	70 mm to 80 mm	-
(cc) Medium	60 mm to 70 mm	60 mm to 70 mm	-
(dd) Small	54 mm to 60 mm	54 mm to 60 mm	-
(f) Maturity	As set out in Table 3	As set out in Table 3	-
(g) Bruises	Larger than 20 mm in diameter or which has a surface area larger than 400 mm ² : Provided that no apple may have a bruise larger than 28 mm in diameter	Larger than 25 mm in diameter or which has a surface area larger than 500 mm ² : Provided that no apple may have a bruise larger than 35 mm in diameter	-
(h) Blemishes	Less than 250 mm ²	Less than 300 mm ²	-
(i) Sunburn	As set out in Table 5	As set out in Table 5	-
(j) Russetting	As set out in Table 5	As set out in Table 5	-
(k) Core rot			
(aa) progressive	May not deviate to the extent set out in Table 2	May not deviate to the extent set out in Table 2	May not deviate to the extent set out in Table 2
(bb) non-progressive	May not deviate to the extent set out in Table 2	May not deviate to the extent set out in Table 2	May not deviate to the extent set out in Table 2
(l) Bitter pit or Chocolate spot	As set out in Table 5	As set out in Table 5	-

(m)	Foreign matter	May not deviate to the extent set out in Table 2	May not deviate to the extent set out in Table 2	-
(n)	Any other external or internal quality defect	May not deviate to the extent set out in Table 2	May not deviate to the extent set out in Table 2	-
(o)	Hail marks - Isolated and scattered	As set out in Table 5	As set out in Table 5	-
(p)	Calcium spot	As set out in Table 5	As set out in Table 5	-
(q)	Fusicladium	50mm ²	100mm ²	-
(r)	Humps (single or multiple)	3mm in height with a 50mm (square mm)	5mm in height with a 100mm (square mm)	-

TABLE 2: MAXIMUM PERMISSIBLE DEVIATIONS BY NUMBER

The maximum permissible deviations allowable are as follows:

Quality factor	Class 1	Class 2	Lowest Class
(a) Decay:			
(aa) Decomposition or fungus development	2%	4%	12%
(bb) Internal insect damage	2%	4%	12%
(b) (aa) Progressive core rot or bitter pit, lenticell pit individually and cold damage	6%	10%	20%
(bb) Non-progressive core rot	10%	15%	30%
(c) Internal break-down, cold damage, or unspecified internal quality defects, individually	4%	6%	20%
(d) Visible spray residue	3%	6%	6%
(e) Injuries	6%	8%	20%

(f)	Blemishes	10%	15%	-
(g)	Bruises	10%	15%	-
(h)	Deviations in items (a), (b), and (d) collectively: Provide that such deviations shall individually be within the specified limits	10%	15%	20%
(i)	Minimum size/weight	10%	15%	-
(j)	Colour	20%	30%	-
(l)	Minimum size/weight	10%	15%	-
(m)	Foreign matter	10%	15%	-
(n)	Any other external or internal quality defects	10%	15%	-
(o)	Immature fruit/over mature fruit	0%	0%	-
(p)	Deviation for the above (f), (g), (h), (i), (j), (k) and (l)	20%	30%	-

TABLE 3: MINIMUM RIPENESS: THE IODINE TEST (ALL CLASSES)

Cultivar/ Variety	Minimum average percentage starch conversion (% white)
1. Red Delicious and mutants (e.g. Oregon Spur, Starking, Starkrimson, Starkspur, Topred), Caudle (Cameo™)	8%
2. African Red (African Carmine™), Braeburn, Mahana Red, Fuji, Fuji Brak (KIKU®) Honeycrisp (Honeycrunch®), Cripps Pink, Rosy Glow (Pink Lady®), Fiesta, Gala, Golden Delicious, Panorama Golden, Tenroy (Royal Gala®), Olsentwo Gala (Pacific Gala™), Corder Gala, Royal Beaut	15%
3. Granny Smith, Mariri Red, Cripps Red (Joya®)	20%
4. Any other cultivar not mentioned above	20%

TABLE 4: OVERRIPENESS STANDARD (ALL CLASSES)

Cultivar/Variety	Minimum average pressure in kg per sample of 10 fruit
UEB32642 (Opal [®]), Scifresh (Jazz [®])	7,0
Nicogreen (Greenstar [®])	6,5
Cripps Pink (Pink Lady [®]), Rosy Glow(Pink Lady [®]), Cripps Red (Joya [®])	6,3
Braeburn Nicoter (Kanzi [®]), Cripps Pink, Cripps Red, Mahana Red, Mariri Red	5,9
Honeycrisp (Honeycrunch [®])	4
African Red (African Carmine [™]), Nicogreen	5,5
Fuji Brak (KIKU [®]), Caudle (Cameo [™]), Corder Gala, Gala, Red Delicious and mutants (e.g. Early Red One, Oregon Spur, Starking, Starkrimson, Starkspur, Topred), Olsentwo Gala (Pacific Gala [™]), Tenroy (Royal Gala [®]), Royal Beaut, Granny Smith	5,4
Fiesta, Fuji, Golden Delicious	5,0

[®] Indicates a registered trademark
[™] Indicates a trademark

TABLE 5: ILLUSTRATIONS APPLICABLE TO APPLES: CLASS 1

Colour Chart No.	Quality factor	Cultivar/Variety	Standard
A.19	Calcium spot	All cultivars	Maximum colour print no. 5
A.20	Sunburn	Golden Delicious, UEB32642 (Opal®)	Maximum colour print no. 6
A.27	Colour	Jonathan	Minimum colour print no. 2
A.28	Colour	Golden Delicious, Panorama Golden, Fiesta, Nicogreen (Greenstar®), UEB32642 (Opal®)	Maximum colour print no. 7
A.29	Hail marks – scattered	All cultivars	Maximum colour print no. 5
A.30	Hail marks – isolated	All cultivars	Maximum colour print no. 5
A.31	Stem-end russeting	All red cultivars	Maximum colour print no. 10
A.33	Sonbrand/Sunburn	Granny Smith	Maximum colour print no. 7
A.34	Colour	Starking (Starking Delicious, Stark Delicious), Royal Beaut	Maximum colour print no. 9
A.34	Kleur/Colour	Red Delicious	30% colour
A.35	Kleur/Colour	Topred, Early Red One, Oregon Spur, Romeo	Minimum colour print no. 11 on the worst coloured side
A.36	Kleur/Colour	Starkrimson	Minimum colour print no. 8 on both sides
		Splendour	Minimum colour print no. 11 on one side
A.37	Retiform russeting	All cultivars	Maximum colour print no. 6 if present on both sides and no. 8 if present on one side
A.38	Colour	Granny Smith	Maximum colour print no. 7
A.40	Stem-end russeting	Granny Smith	Maximum colour print no. 11
A.42	Colour	Tenroy (Royal Gala®)	50% of the fruit must have red colouring
A.42	Colour	Gala	10% of the fruit must have red colouring
A.43	Stem-end russeting	Golden Delicious/Blushed Golden, UEB32642 (Opal®)	Maximum colour print no. 10. Provided that moustache shaped stem end russet is allowed as long as total surface does not exceed photo 10 and the moustache shaped russet should not exceed more than 20mm down the side of the apple if viewed from the side
	Kleur/Colour	Braeburn	10% colour
	Kleur/Colour	Fuji	10% colour
	Kleur/Colour	Cripps' Pink, Honeycrisp (Honeycrunch®)	10% colour
	Kleur/Colour	Cripps Red	25% colour
Pink Lady®	Sonbrand/Sunburn	Cripps Pink	Maximum colour print no. 5
Pink Lady®	Sonbrand/Sunburn	Cripps Red	5/Maximum colour print no. 5

TABLE 6: ILLUSTRATIONS APPLICABLE TO APPLES: CLASS 2

Colour Chart No.	Quality factor	Cultivar/Variety	Standard
A.19	Calcium spot	All cultivars	Maximum colour print no. 6
A.20	Sunburn	Golden Delicious/Blushed Golden, UEB32642 (Opal®)	Maximum colour print no. 7
A.28	Colour	Golden Delicious, Panorama Golden, Fiesta, Nicogreen (Greenstar®), UEB32642 (Opal®)	-
A.29	Hail marks – scattered	All cultivars	Maximum colour print no. 7
A.30	Hail marks – isolated	All cultivars	Maximum colour print no. 6
A.31	Stem-end russeting	All red cultivars	Maximum colour print no. 12
A.33	Sunburn	Granny Smith	Allowed provided no secondary burn
A.34	Colour	Starking (Starking Delicious, Stark Delicious), Royal Beaut	Maximum colour print no.9
	Colour	Red Delicious	30% colour
A.35	Colour	Topred, Early Red One, Oregon Spur, Romeo	Minimum colour print no. 11 on the worst coloured side
A.36	Colour	Starkrimson	Minimum colour print no. 8 on both sides
		Splendour	Minimum colour print no. 11 on one side
A.37	Retiform russeting	All cultivars	Maximum colour print no. 7 if present on both side and no. 9 if present on one side
A.38	Colour	Granny Smith	-
A.40	Stem-end russeting	Granny Smith	Maximum colour print no. 12
A.42	Colour	Tenroy (Royal Gala®)	50% of the fruit must have red colouring
A. 42	Colour	Gala	-
A.43	Stem-end russeting	Golden Delicious, UEB32642 (Opal®)	Maximum colour print no. 12. Provided that moustache shaped stem end russet is allowed as long as total surface does not exceed photo 12 and the moustache shaped russet should not exceed more than 25mm down the side of the apple if viewed from the side
	Colour	Braeburn	12% colour
	Colour	Fuji	12% colour
	Colour	Cripps' Pink, Honeycrisp (Honeycrunch®)	12% colour
	Colour	Cripps Red	25% colour
Pink Lady®	Sunburn	Cripps Pink	Maximum colour print no. 5
Pink Lady®	Sunburn	Cripps Red	Maximum colour print no. 5

TABLE 7: PERMISSIBLE CULTIVARS (CLASS 1, CLASS 2 AND LOWEST CLASS)

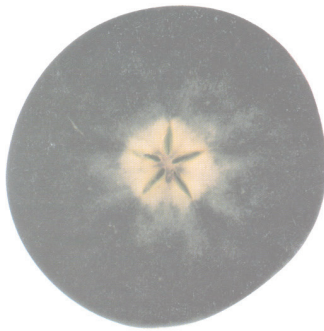
Cultivar/Variety
African Red (African Carmine™)
Autumn Blush
Blushed Golden
Braeburn
Cripps Pink (Pink Lady®)*
Cripps Red (Joya®)*
Empire
Early Red One
Fiesta
Fuji
Gala
Gingergold
Golden Delicious
Granny Smith
Honeycrisp (Honeycrunch®)
Joburn (Red Braeburn™)
Jonagold
Jonagored
Jonathan
Lady Williams
Nicogreen (Greenstar®),
Nicoter (Kanzi®)
Oregon Spur (Oregon Red Spur)
Panorama Golden (Golden Delicious)
Romeo
Royal Beaut
Splendour
Starking (Starking Delicious)
Starkrimson (Starkrimson Delicious)
Tenroy (Royal Gala®)
Topred (Topred Delicious)
UEB32642 (Opal®)
York Imperial
Any other suitable cultivar not mentioned above and which has been approved by the Registrar of Plant Improvement Act

® Indicates a registered trademark

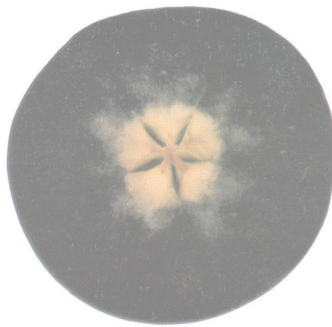
™ Indicates a trademark

* Quality standards for the trade name might be higher than those specified. If necessary consult the relevant license holder.

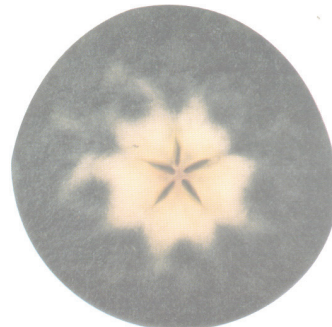
**PART 2
STARCH CONVERSION CHART**



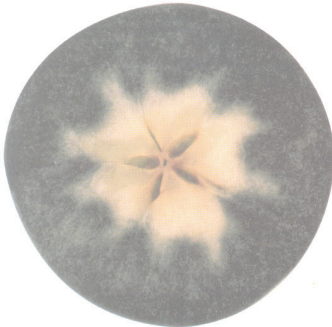
5%



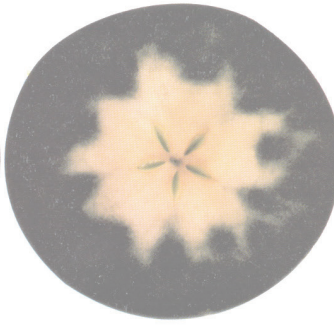
10%



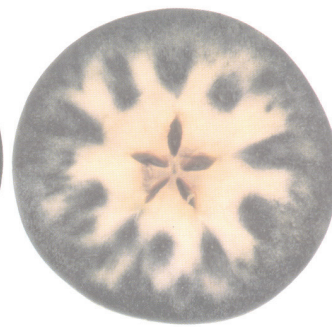
20%



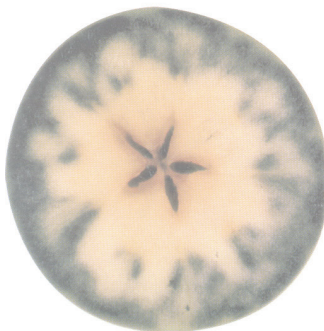
25%



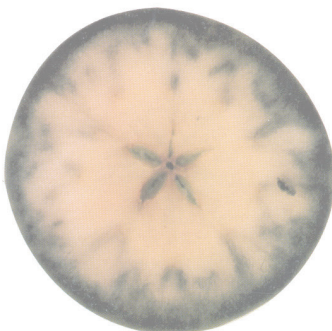
30%



40%



60%



70%



80%

DEPARTMENT OF AGRICULTURE, FORESTRY AND FISHERIES

NO. R. 726

17 JUNE 2016

AGRICULTURAL PRODUCT STANDARDS ACT, 1990 (ACT No. 119 OF 1990)

**CORRECTION NOTICE: REGULATIONS RELATING TO THE GRADING,
PACKING AND MARKING OF TABLE GRAPES INTENDED FOR SALE IN THE
REPUBLIC OF SOUTH AFRICA**

In Government Gazette No. 40014, Notice No. R. 588 of 27 May 2016 rectify paragraph (c) on the first page to read as follows:

- (c) read together with section 3(2) of the said Act, repealed the regulations published by Government Notice No. R. 422 of 1 June 2012, with effect from the said date of commencement.

DEPARTMENT OF AGRICULTURE, FORESTRY AND FISHERIES

NO. R. 727

17 JUNE 2016

AGRICULTURAL PRODUCT STANDARDS ACT, 1990 (ACT No. 119 OF 1990)

**CORRECTION NOTICE: REGULATIONS RELATING TO THE GRADING,
PACKING AND MARKING OF PEARS INTENDED FOR SALE IN THE REPUBLIC
OF SOUTH AFRICA**

In Government Gazette No. 40014, Notice No. R. 587 of 27 May 2016 rectify the following on the first page:

1. Replace The Minister of Agriculture with The Minister of Agriculture, Forestry and Fisheries.
2. Rectify paragraph (c) to read as follows:

- (c) read together with section 3(2) of the said Act, repealed the regulations published by Government Notice No. R. 528 of 15 May 2009 with effect from the said date of commencement.

SOUTH AFRICAN REVENUE SERVICE

NO. R. 728

17 JUNE 2016

CUSTOMS AND EXCISE ACT, 1964.
AMENDMENT OF SCHEDULE NO. 2 (NO. 2/1/375)

In terms of section 56 of the Customs and Excise Act, 1964, Part 1 of Schedule No. 2 to the said Act is hereby amended, to the extent set out in the Schedule hereto.



M JONAS
DEPUTY MINISTER OF FINANCE

SCHEDULE

By the substitution of the following:

Item	Tariff Heading	Code	CD	Description	Rebate Items	Imported from or Originating in	Rate of Anti-dumping duty
201.00				LIVE ANIMALS; ANIMAL PRODUCTS			
201.02				MEAT AND EDIBLE MEAT OFFAL			
201.02	0207.14.9	02.07	76	Frozen meat of fowls of the species <i>Gallus Domesticus</i> , cut in pieces with bone in, produced by Anhaltische Geflügelspezialitäten GmbH, Donautal Geflügelspezialitäten Zweiniederlassung der Lohman & Co. Nienburger Geflügelspezialitäten GmbH, Oldenburger Geflügelspezialitäten GmbH and Wiesenhof International GmbH Co. KG.	301.00 - 399.00; 401.00 - 499.00	Germany	31.3%
201.02	0207.14.9	03.07	70	Frozen meat of fowls of the species <i>Gallus Domesticus</i> , cut in pieces with bone in (excluding that produced by Anhaltische Geflügelspezialitäten GmbH, Donautal Geflügelspezialitäten Zweiniederlassung der Lohman & Co. Nienburger Geflügelspezialitäten GmbH, Oldenburger Geflügelspezialitäten GmbH and Wiesenhof International GmbH Co. KG.)	301.00 - 399.00; 401.00 - 499.00	Germany	73.33%
201.02	0207.14.9	04.07	75	Frozen meat of fowls of the species <i>Gallus Domesticus</i> , cut in pieces with bone in, produced by Plukon Dedemsvaart BV, Plukon Goor BV and Plukon Blokker BV	301.00 - 399.00; 401.00 - 499.00	Netherlands	3.86%
201.02	0207.14.9	05.07	78	Frozen meat of fowls of the species <i>Gallus Domesticus</i> , cut in pieces with bone in, (excluding that produced by Plumveeslachterij C van Miert BV, Plumveeslachterij Mleki Hunsel BV, Frisia Foods BV, Plukon Dedemsvaart BV, Plukon Goor BV and Plukon Blokker BV)	301.00 - 399.00; 401.00 - 499.00	Netherlands	22.81%
201.02	0207.14.9	06.07	74	Frozen meat of fowls of the species <i>Gallus Domesticus</i> , cut into pieces with bone in, produced by Moy Park Ltd	301.00 - 399.00; 401.00 - 499.00	United Kingdom	12.07%
201.02	0207.14.9	07.07	79	Frozen meat of fowls of the species <i>Gallus Domesticus</i> , cut into pieces with bone in, produced by 2 Sisters Food Group Ltd and Amber Foods Ltd	301.00 - 399.00; 401.00 - 499.00	United Kingdom	12.07%
201.02	0207.14.9	08.07	73	Frozen meat of fowls of the species <i>Gallus Domesticus</i> , cut in pieces with bone in, (excluding that produced by Moy Park Ltd, 2 Sisters Food Group Ltd and Amber Foods Ltd)	301.00 - 399.00; 401.00 - 499.00	United Kingdom	30.99%
201.02	0207.14.91	01.08	89	Whole bird cut in half	301.00 - 399.00; 401.00 - 499.00 (excluding 460.03/0207.14.9/01.07)	United States of America	940c/kg

Item	Tariff Heading	Code	CD	Description	Rebate Items	Imported from or Originating in	Rate of Anti-dumping duty
201.02	0207.14.93	01.08	85	Leg quarters	301.00 - 399.00; 401.00 - 499.00 (excluding 460.03/0207.14.9/01.07)	United States of America	940c/kg
201.02	0207.14.95	01.08	80	Wings	301.00 - 399.00; 401.00 - 499.00 (excluding 460.03/0207.14.9/01.07)	United States of America	940c/kg
201.02	0207.14.96	01.08	83	Breasts	301.00 - 399.00; 401.00 - 499.00 (excluding 460.03/0207.14.9/01.07)	United States of America	940c/kg
201.02	0207.14.97	01.08	86	Thighs	301.00 - 399.00; 401.00 - 499.00 (excluding 460.03/0207.14.9/01.07)	United States of America	940c/kg
201.02	0207.14.98	01.08	89	Drumsticks	301.00 - 399.00; 401.00 - 499.00 (excluding 460.03/0207.14.9/01.07)	United States of America	940c/kg
201.02	0207.14.99	01.08	81	Other	301.00 - 399.00; 401.00 - 499.00 (excluding 460.03/0207.14.9/01.07)	United States of America	940c/kg
202.00	VEGETABLE PRODUCTS						
202.02	EDIBLE VEGETABLES AND CERTAIN ROOTS AND TUBERS						
202.02	0703.20	01.06	64	Garlic, fresh or chilled	301.00 - 399.00; 401.00 - 499.00	China	1 925c/kg
202.02	0712.90.90	01.08	80	Dried garlic, in the form of bulbs or cloves	301.00 - 399.00; 401.00 - 499.00	China	1 925c/kg
205.01	SALT; SULPHUR; EARTHS AND STONE; PLASTERING MATERIALS, LIME AND CEMENT						

Item	Tariff Heading	Code	CD	Description	Rebate Items	Imported from or Originating in	Rate of Anti-dumping duty
205.01	2523.29	01.06	65	Portland Cement manufactured or produced by Lucky Cement Limited	301.00 - 399.00; 401.00 - 499.00	Pakistan	14,29%
205.01	2523.29	02.06	63	Portland Cement manufactured or produced by Bestway Cement Limited	301.00 - 399.00; 401.00 - 499.00	Pakistan	77,15%
205.01	2523.29	03.06	64	Portland Cement manufactured or produced by D.G Khan Cement Limited Portland	301.00 - 399.00; 401.00 - 499.00	Pakistan	68,87%
205.01	2523.29	04.06	69	Portland Cement manufactured or produced by Attock Pakistan Cement Limited	301.00 - 399.00; 401.00 - 499.00	Pakistan	63,53%
205.01	2523.29	05.06	63	Portland Cement (excluding that manufactured or produced by Lucky Cement Limited, Bestway Cement Limited, D.G Khan Cement Limited, Attock Pakistan Cement Limited)	301.00 - 399.00; 401.00 - 499.00	Pakistan	62,69%
206.00	PRODUCTS OF THE CHEMICAL OR ALLIED INDUSTRIES						
206.01	INORGANIC CHEMICALS: ORGANIC OR INORGANIC COMPOUNDS OF PRECIOUS METALS, OF RARE-EARTH METALS, OF RADIO-ACTIVE ELEMENTS OR OF ISOTOPES						
206.01	2836.20	01.06	63	Sodium carbonate produced by OCI Chemical Corporation	301.00 - 399.00; 401.00 - 499.00	United States of America	21%
206.01	2836.20	02.06	68	Disodium carbonate produced by TATA Chemicals (SODA ASH) Partners INC. (TCSAP)	301.00 - 399.00; 401.00 - 499.00	United States of America	8%
206.01	2836.20	03.06	62	Disodium carbonate (excluding that produced by TATA Chemicals (SODA ASH) Partners INC. (TCSAP) and OCI Chemical Corporation)	301.00 - 399.00; 401.00 - 499.00	United States of America	40%
206.02	ORGANIC CHEMICALS						
206.04	PREPARED PIGMENTS, PREPARED OPACIFIERS AND PREPARED COLOURS, VITRIFIABLE ENAMELS AND GLAZES, ENGORGES (SLIPS), LIQUID LUSTRES AND SIMILAR PREPARATIONS, OF A KIND USED IN THE CERAMIC, ENAMELLING OR GLASS INDUSTRY; GLASS FRIT AND OTHER GLASS, IN THE FORM OF POWDER, GRANULES OR FLAKES:						
206.04	3207.40	01.06	67	Glass frit and other glass, in the form of powder, granules or flakes manufactured or exported by Smalticeram Do Brazil Ltda	301.00 - 399.00; 401.00 - 499.00	Brazil	24,65%
206.04	3207.40	02.06	61	Glass frit and other glass, in the form of powder, granules or flakes (excluding that manufactured or exported by Smalticeram Do Brazil Ltda)	301.00 - 399.00; 401.00 - 499.00	Brazil	50%
207.00	PLASTICS AND ARTICLES THEREOF; RUBBER AND ARTICLES THEREOF						
207.01	PLASTICS AND ARTICLES THEREOF						

Item	Tariff Heading	Code	CD	Description	Rebate Items	Imported from or Originating in	Rate of Anti-dumping duty
207.01	3907.60.9	01.07	70	Poly(ethylene terephthalate), in primary forms (excluding liquids and pastes)	301.00 - 399.00; 401.00 - 499.00	Taiwan, Province of China	75%
207.01	3907.60.9	02.07	75	Poly(ethylene terephthalate), in primary forms (excluding liquids and pastes)	301.00 - 399.00; 401.00 - 499.00	India	54,1%
207.01	3907.60.9	03.07	71	Poly(ethylene terephthalate), in primary forms (excluding liquids and pastes)	301.00 - 399.00; 401.00 - 499.00	Republic of Korea	19,7%
207.01	3920.49	01.06	62	Plates, sheets, film, foil and strip of polymers of vinyl chloride (PVC), non-cellular and not reinforced, laminated, supported or similarly combined with other materials and having a plasticizer content not exceeding 6% (excluding PVC strips with a diameter of 2 mm thickness and a width not exceeding 20 mm)	301.00 - 399.00; 401.00 - 499.00 (excluding 307.04/3920.4/01.05; 315.12/3920.4/01.05; 460.07/3920.49/01.06;46 0.07/3920.49/02.06)	China	32,7%
207.01	3920.49	02.06	67	Plates, sheets, film, foil and strip of polymers of vinyl chloride (PVC), non-cellular and not reinforced, laminated, supported or similarly combined with other materials and having a plasticizer content not exceeding 6%	301.00 - 399.00; 401.00 - 499.00 (excluding 307.4/3920.4/01.05; 315.12/3920.4/01.05; 460.07/3920.49/01.06; 460.07/3920.49/02.06)	Taiwan, Province of China	22,6%
210.00	PULP OF WOOD OR OF OTHER FIBROUS CELLULOSIC MATERIAL; WASTE AND SCRAP OF PAPER OR PAPERBOARD; PAPER AND PAPERBOARD AND ARTICLES THEREOF						
210.02	PAPER AND PAPERBOARD; ARTICLES OF PAPER PULP, OF PAPER OR OF PAPERBOARD						
211.00	TEXTILES AND TEXTILE ARTICLES						
213.00	ARTICLES OF STONE, PLASTER, CEMENT, ASBESTOS, MICA OR SIMILAR MATERIALS; CERAMIC PRODUCTS; GLASS AND GLASSWARE						
213.02	ARTICLES OF PLASTER OR OF COMPOSITIONS BASED ON PLASTER						

Item	Tariff Heading	Code	CD	Description	Rebate Items	Imported from or Originating in	Rate of Anti-dumping duty
213.02	6809.11	05.06	65	Boards, sheets, panels, tiles and similar articles of plaster or of compositions based on plaster, faced or re-inforced with paper or paperboard only, not ornamented	301.00 - 399.00; 401.00 - 499.00	Thailand	45%
213.02	6809.11	06.06	66	Boards, sheets, panels, tiles and similar articles of plaster or of compositions based on plaster, faced or re-inforced with paper or paperboard only, not ornamented	301.00 - 399.00; 401.00 - 499.00	Indonesia	34,6%
213.03	GLASS AND GLASSWARE						
213.03	7004.90.90	01.08	88	Drawn glass and blown glass, in sheets, whether or not having an absorbent or reflecting layer, but not otherwise worked, of a thickness exceeding 2,5 mm but not exceeding 6 mm (excluding optical glass)	301.00 - 399.00; 401.00 - 499.00	China	562c/m ²
213.03	7004.90.90	02.08	82	Drawn glass and blown glass, in sheets, whether or not having an absorbent or reflecting layer, but not otherwise worked, of a thickness exceeding 2,5 mm but not exceeding 6 mm (excluding optical glass)	301.00 - 399.00; 401.00 - 499.00	India	587c/m ²
213.03	7005.29.05	02.08	89	Solar glass, of a thickness exceeding 2,5 mm but not exceeding 3 mm	301.00 - 399.00; 401.00 - 499.00	Indonesia	45%
213.03	7005.29.05	05.08	82	Solar glass, of a thickness exceeding 3 mm but not exceeding 4 mm (excluding that manufactured by PT Multiaglass Industrino and PT Abdi Rakyat Bakti)	301.00 - 399.00; 401.00 - 499.00	Indonesia	10%
213.03	7005.29.05	07.08	81	Solar glass, of a thickness exceeding 4 mm but not exceeding 5 mm (excluding that manufactured by PT Multiaglass Industrino and PT Abdi Rakyat Bakti)	301.00 - 399.00; 401.00 - 499.00	Indonesia	12,51%
213.03	7005.29.05	10.08	83	Solar glass, of a thickness exceeding 5 mm but not exceeding 6 mm	301.00 - 399.00; 401.00 - 499.00	Indonesia	30,5%
213.03	7005.29.17	01.08	81	Float glass and surface ground or polished glass, in sheets, whether or not having an absorbent, reflecting or non-reflecting layer, but otherwise not worked, of a thickness exceeding 2,5 mm but not exceeding 3 mm (excluding solar glass and optical glass)	301.00 - 399.00; 401.00 - 499.00	India	720c/m ²
213.03	7005.29.17	02.08	86	Float glass and surface ground or polished glass, in sheets, whether or not having an absorbent, reflecting or non-reflecting layer, but otherwise not worked, of a thickness exceeding 2,5 mm but not exceeding 3 mm (excluding solar glass and optical glass)	301.00 - 399.00; 401.00 - 499.00	Indonesia	45%
213.03	7005.29.17	03.08	80	Float glass and surface ground or polished glass, in sheets, whether or not having an absorbent, reflecting or non-reflecting layer, but otherwise not worked, of a thickness exceeding 2,5 mm but not exceeding 3 mm (excluding solar glass and optical glass)	301.00 - 399.00; 401.00 - 499.00	China	802c/m ²
213.03	7005.29.23	01.08	82	Float glass and surface ground or polished glass, in sheets, whether or not having an absorbent, reflecting or non-reflecting layer, but otherwise not worked, of a thickness exceeding 3 mm but not exceeding 4 mm (excluding solar glass and optical glass)	301.00 - 399.00; 401.00 - 499.00	India	886c/m ²

Item	Tariff Heading	Code	CD	Description	Rebate Items	Imported from or Originating in	Rate of Anti-dumping duty
213.03	7005.29.23	02.08	87	Float glass and surface ground or polished glass, in sheets, whether or not having an absorbent, reflecting or non-reflecting layer, but not otherwise worked, of a thickness exceeding 3 mm but not exceeding 4 mm (excluding solar glass and optical glass) (excluding that manufactured by PT Multiaglass Industrino and PT Abdi Rakyat Bakti)	301.00 - 399.00; 401.00 - 499.00	Indonesia	10%
213.03	7005.29.23	03.08	81	Float glass and surface ground or polished glass, in sheets, whether or not having an absorbent, reflecting or non-reflecting layer, but not otherwise worked, of a thickness exceeding 3 mm but not exceeding 4 mm (excluding solar glass and optical glass)	301.00 - 399.00; 401.00 - 499.00	China	802c/m ²
213.03	7005.29.25	01.08	88	Float glass and surface ground or polished glass, in sheets, whether or not having an absorbent, reflecting or non-reflecting layer, but not otherwise worked, of a thickness exceeding 4 mm but not exceeding 5 mm (excluding solar glass and optical glass) (excluding that manufactured by PT Multiaglass Industrino and PT Abdi Rakyat Bakti)	301.00 - 399.00; 401.00 - 499.00	Indonesia	12,51%
213.03	7005.29.25	02.08	82	Float glass and surface ground or polished glass, in sheets, whether or not having an absorbent, reflecting or non-reflecting layer, but not otherwise worked, of a thickness exceeding 4 mm but not exceeding 5 mm (excluding solar glass and optical glass)	301.00 - 399.00; 401.00 - 499.00	China	802c/m ²
213.03	7005.29.35	01.08	85	Float glass and surface ground or polished glass, in sheets, whether or not having an absorbent, reflecting or non-reflecting layer, but not otherwise worked, of a thickness exceeding 5 mm but not exceeding 6 mm (excluding solar glass and optical glass)	301.00 - 399.00; 401.00 - 499.00	India	1 387c/m ²
213.03	7005.29.35	02.08	84	Float glass and surface ground or polished glass, in sheets, whether or not having an absorbent, reflecting or non-reflecting layer, but not otherwise worked, of a thickness exceeding 5 mm but not exceeding 6 mm (excluding solar glass and optical glass)	301.00 - 399.00; 401.00 - 499.00	Indonesia	30,5%
213.03	7005.29.35	03.08	89	Float glass and surface ground or polished glass, in sheets, whether or not having an absorbent, reflecting or non-reflecting layer, but not otherwise worked, of a thickness exceeding 5 mm but not exceeding 6 mm (excluding solar glass and optical glass)	301.00 - 399.00; 401.00 - 499.00	China	802c/m ²
213.03	7009.91	01.06	80	Unframed glass mirrors, of a thickness of 2 mm or more but not exceeding 6 mm	301.00 - 399.00; 401.00 - 499.00	India	68,74%
213.03	7009.91	02.06	85	Unframed glass mirrors, of a thickness of 2 mm or more but not exceeding 6 mm (excluding that manufactured by PT Matahari Silverindo Jaya)	301.00 - 399.00; 401.00 - 499.00	Indonesia	6,61%
213.03	7009.91	03.06	89	Unframed glass mirrors, of a thickness of 2 mm or more but not exceeding 6 mm	301.00 - 399.00; 401.00 - 499.00	China	40,22%

Item	Tariff Heading	Code	CD	Description	Rebate Items	Imported from or Originating in	Rate of Anti-dumping duty
215.00	BASE METALS AND ARTICLES OF BASE METALS						
215.02	ARTICLES OF IRON OR STEEL						
215.02	7312.10.20	01.08	82	Stranded wire, of iron or steel, not electrically insulated, of a diameter of 12,7 mm or more (excluding that of wire of stainless steel, that of wire plated, coated or clad with copper or tin and that identifiable as conveyor belt cord)	301.00 - 399.00; 401.00 - 499.00	China	113,25%
215.02	7312.10.25	03.08	85	Ropes and cables, of iron or steel, not electrically insulated, of a diameter exceeding 32 mm (excluding that of wire of stainless steel, that of wire plated, coated or clad with copper and that identifiable as conveyor belt cord), (excluding that imported from Bridon International Limited)	301.00 - 399.00; 401.00 - 499.00	United Kingdom	76,17%
215.02	7312.10.25	04.08	85	Ropes and cables, of iron or steel, not electrically insulated, of a diameter exceeding 32 mm (excluding that of wire of stainless steel, that of wire plated, coated or clad with copper and that identifiable as conveyor belt cord), (excluding that imported from Bridon International GmbH and Pfeifer Drako)	301.00 - 399.00; 401.00 - 499.00	Germany	93%

215.02	7312.10.40	03.08	85	Ropes and cables, of iron or steel, not electrically insulated, of a diameter exceeding 32 mm (excluding that of wire of stainless steel, that of wire plated, coated or clad with copper and that identifiable as conveyor belt cord), (excluding that imported from Bridon International Limited)	301.00 - 399.00; 401.00 - 499.00	United Kingdom	76.17%
215.02	7312.10.40	04.08	87	Ropes and cables, of iron or steel, not electrically insulated, of a diameter exceeding 32 mm (excluding that of wire of stainless steel, that of wire plated, coated or clad with copper and that identifiable as conveyor belt cord), (excluding that imported from Bridon International GmbH and Pfeifer Drako)	301.00 - 399.00; 401.00 - 499.00	Germany	93%
215.02	7312.10.90	03.08	84	Ropes and cables, of iron or steel, not electrically insulated, of a diameter exceeding 32 mm (excluding that of wire of stainless steel, that of wire plated, coated or clad with copper and that identifiable as conveyor belt cord), (excluding that imported from Bridon International Limited)	301.00 - 399.00; 401.00 - 499.00	United Kingdom	76.17%
215.02	7312.10.90	04.08	89	Ropes and cables, of iron or steel, not electrically insulated, of a diameter exceeding 32 mm (excluding that of wire of stainless steel, that of wire plated, coated or clad with copper and that identifiable as conveyor belt cord), (excluding that imported from Bridon International Limited GmbH and Pfeifer Drako)	301.00 - 399.00; 401.00 - 499.00	Germany	96%
215.02	7318.15.39	01.08	88	Fully threaded screws with hexagon heads, (excluding those of stainless steel) with a thread diameter of 6 mm or more but not exceeding 36 mm and a length of 10 mm or more but not exceeding 400 mm manufactured and exported by Ningbo Jinding Fastening Piece Co Ltd	301.00 - 399.00; 401.00 - 499.00	China	19.3%
215.02	7318.15.39	02.08	82	Fully threaded screws with hexagon heads, (excluding those of stainless steel) with a thread diameter of 6 mm or more but not exceeding 36 mm and a length of 10 mm or more but not exceeding 400 mm manufactured by Zhejiang Laibao Precision Technology Co Ltd, exported by Shanghai Wisechain Fasteners Ltd and Shanghai Wisechain Trading Ltd	301.00 - 399.00; 401.00 - 499.00	China	11.09%

Item	Tariff Heading	Code	CD	Description	Rebate Items	Imported from or Originating in	Rate of Anti-dumping duty
215.02	7318.15.39	03.08	87	Fully threaded screws with hexagon heads, (excluding those of stainless steel) with a thread diameter of 6 mm or more but not exceeding 36 mm and a length of 10 mm or more but not exceeding 400 mm (excluding those manufactured and exported by Zhejiang Zhaipu Industrial Co Ltd, those manufactured and exported by Ningbo Xingyi Fasteners Co Ltd, those manufactured by Shanghai Biao Wu High Tensile Fasteners Co Ltd, and exported by Shanghai Prime Machinery Co Ltd and those manufactured and exported by Wenzhou Zhongsheng Hardware Co Ltd)	301.00 - 399.00; 401.00 - 499.00	China	73,93%
215.02	7318.15.43	01.08	83	Bolts, of iron or steel, with hexagon heads (excluding bolts of stainless steel, bolts fitted with base metal expansion sleeves and bolts identifiable for use solely or principally on aircraft), of a width of 6 mm or more but not exceeding 36 mm and a length of 10 mm or more but not exceeding 400 mm, whether or not with their nuts and washers (excluding those manufactured by Ningbo Jinding Fastening Piece Company Limited)	301.00 - 399.00; 401.00 - 499.00	China	55,4%
215.02	7318.16.20	01.08	87	Self-locking nuts (excluding those with a thread diameter exceeding 10 mm)	301.00 - 399.00; 401.00 - 499.00	China	122,7%
215.02	7318.16.30	01.08	81	Other, hexagon nuts of a thread diameter of 6 mm or more but not exceeding 36 mm	301.00 - 399.00; 401.00 - 499.00	China	122,7%
215.02	7324.10	03.06	64	Sinks of stainless steel (excluding that manufactured or produced by Tailing Chuanger Metal Products Co. Ltd.)	301.00 - 399.00; 401.00 - 499.00	China	62,41%
215.02	7324.10	05.06	63	Sinks of stainless steel	301.00 - 399.00; 401.00 - 499.00	Malaysia	95,86%
215.11	TOOLS, IMPLEMENTS, CUTLERY, SPOONS AND FORKS, OF BASE METAL; PARTS THEREOF OF BASE METAL						
215.11	8201.10.10	01.08	85	Spades and shovels, of a maximum blade width of more than 200 mm but not exceeding 320 mm	301.00 - 399.00; 401.00 - 499.00	China	158,1c/kg
215.11	8201.30.03	01.08	86	Picks	301.00 - 399.00; 401.00 - 499.00	China	262,7c/kg
215.11	8201.30.90	01.08	84	Rakes with more than 8 prongs	301.00 - 399.00; 401.00 - 499.00	China	369,2c/kg
215.11	8201.90.20	01.08	85	Forks, with a prong length exceeding 150 mm (excluding forks with 8 or more prongs)	301.00 - 399.00; 401.00 - 499.00	China	480c/kg

Item	Tariff Heading	Code	CD	Description	Rebate Items	Imported from or Originating In	Rate of Anti-dumping duty
215.12	BASE METALS AND ARTICLES OF BASE METALS						
216.02	ELECTRICAL MACHINERY AND EQUIPMENT AND PARTS THEREOF; SOUND RECORDERS AND REPRODUCERS, TELEVISION IMAGE AND SOUND RECORDERS AND REPRODUCERS AND PARTS AND ACCESSORIES OF SUCH ARTICLES						
216.02	8544.60.10	01.08	80	Electric cable (excluding ignition wiring sets and other wiring sets of a kind used in vehicles, aircraft or ships and co-axial cable), insulated with paper and covered with lead, for a voltage exceeding 1 000 V	301.00 - 399.00; 401.00 - 499.00	India	65,47%
217.00	VEHICLES, AIRCRAFT, VESSELS AND ASSOCIATED TRANSPORT EQUIPMENT						
217.02	VEHICLES (EXCLUDING RAILWAY OR TRAMWAY ROLLING-STOCK), AND PARTS AND ACCESSORIES THEREOF						
217.02	8716.80.10	01.08	89	Wheelbarrows manufactured by Qingdao Youhe Handtruck Co. Ltd	301.00 - 399.00; 401.00 - 499.00	China	32,32%
217.02	8716.80.10	02.08	83	Wheelbarrows manufactured by Qingdao Wantai Special Handtruck Co. Ltd	301.00 - 399.00; 401.00 - 499.00	China	39,92%
217.02	8716.80.10	03.08	88	Wheelbarrows (excluding that manufactured by Qingdao Yongyi Metal Products Co. Ltd; Qingdao Youhe Handtruck Co. Ltd and Qingdao Wantai Special Handtruck Co. Ltd)	301.00 - 399.00; 401.00 - 499.00	China	29,82%

SUID-AFRIKAANSE INKOMSTEDIENS

NO. R. 728

17 JUNIE 2016

DOEANE- EN AKSYNSWET, 1964
WYSIGING VAN BYLAE NO. 2 (NO. 2/1/375)

Kragtens artikel 56 van die Doeane- en Aksynswet, 1964, word Deel 1 van Bylae No. 2 by bogenoemde Wet hiermee gewysig, in die mate in die Bylae hierby aangetoon.



M. JONAS

ADJUNKMINISTER VAN FINANSIES

BYLAE

Deur die vervanging van die volgende:

Item	Tariefpos	Kode	TS	Beskrywing	Kortingitems	Ingevoer vanaf of Oorspronklik van	Skaal van Anti-dumpingreg
201.00	LEWENDE DIERE, DIERLIKE PRODUKTE						
201.02	VLEIS EN EETBARE VLEISAFVAL						
201.02	0207.14.9	02.07	76	Bevore vleis van hoender van die <i>Gallus Domesticus</i> -soort, in stukke gesny met been in, geproduseer deur Anhaltinische Geflügel-spezialitäten GmbH, Donautal Geflügel-spezialitäten Zweiniederlassung der Lohman & Co, Nienburg Geflügel-spezialitäten Zweiniederlassung der Oldenburger Geflügel-spezialitäten GmbH, Oldenburger Geflügel-spezialitäten GmbH en Wiesemhof International GmbH Co. KG.	301.00 - 399.00; 401.00 - 499.00	Duitsland	31,3%
201.02	0207.14.9	03.07	70	Bevore vleis van hoender van die <i>Gallus Domesticus</i> -soort, in stukke gesny met been in, (uitgesonderd die geproduseer deur Anhaltinische Geflügel-spezialitäten GmbH Donautal Geflügel-spezialitäten Zweiniederlassung der Lohman & Co, Nienburg Geflügel-spezialitäten Zweiniederlassung der Oldenburger Geflügel-spezialitäten GmbH, Oldenburger Geflügel-spezialitäten GmbH en Wiesemhof International GmbH Co. KG.)	301.00 - 399.00; 401.00 - 499.00	Duitsland	73,33%
201.02	0207.14.9	04.07	75	Bevore vleis van hoender van die <i>Gallus Domesticus</i> -soort, in stukke gesny met been in, geproduseer deur Plukon Dedemsvaart BV, Plukon Goor BV en Plukon Blokker BV	301.00 - 399.00; 401.00 - 499.00	Nederland	3,86%
201.02	0207.14.9	05.07	78	Bevore vleis van hoender van die <i>Gallus Domesticus</i> -soort, in stukke gesny met been in (uitgesonderd die geproduseer deur Plumveeslachterij C. van Miert B Plumveeslachterij Mleki Hunsel BV, Frisia Foods BV, Plukon Dedemsvaart BV, Plukon Goor BV en Plukon Blokker BV)	301.00 - 399.00; 401.00 - 499.00	Nederland	22,81%
201.02	0207.14.9	06.07	74	Bevore vleis van hoender van die <i>Gallus Domesticus</i> -soort, in stukke gesny met been in, geproduseer deur Moy Park Ltd	301.00 - 399.00; 401.00 - 499.00	Verenigde Koninkryk	12,07%
201.02	0207.14.9	07.07	79	Bevore vleis van hoender van die <i>Gallus Domesticus</i> -soort, in stukke gesny met been in, geproduseer deur, 2 Sisters Food Group Ltd en Amber Foods Ltd	301.00 - 399.00; 401.00 - 499.00	Verenigde Koninkryk	12,07%
201.02	0207.14.9	08.07	73	Bevore vleis van hoender van die <i>Gallus Domesticus</i> -soort, in stukke gesny met been in (uitgesonderd die geproduseer deur Moy Park Ltd, 2 Sisters Food Group Ltd Amber Foods Ltd)	301.00 - 399.00; 401.00 - 499.00	Verenigde Koninkryk	30,99%
201.02	0207.14.91	01.08	89	Heel hoender in helfte gesny	301.00 - 399.00; 401.00 - 499.00 (uitgesonderd 460.03/0207.14.9/01.07)	Verenigde State van Amerika	940c/kg
201.02	0207.14.93	01.08	85	Been kwarte	301.00 - 399.00; 401.00 - 499.00 (uitgesonderd 460.03/0207.14.9/01.07)	Verenigde State van Amerika	940c/kg
201.02	0207.14.95	01.08	80	Vierke	301.00 - 399.00; 401.00 - 499.00 (uitgesonderd 460.03/0207.14.9/01.07)	Verenigde State van Amerika	940c/kg
201.02	0207.14.96	01.08	83	Borsies	301.00 - 399.00; 401.00 - 499.00 (uitgesonderd 460.03/0207.14.9/01.07)	Verenigde State van Amerika	940c/kg

Item	Tariefpos	Kode	TS	Beskrywing	Kortingitems	Ingevoer vanaf of Oorspronklik van	Skaal van Anti-dumpingreg
201.02	0207.14.97	01.08	86	Dye	301.00 - 399.00; 401.00 - 499.00 (uitgesonderd 460.03/0207.14.9/01.07)	Verenigde State van Amerika	940c/kg
201.02	0207.14.98	01.08	89	Boudjies	301.00 - 399.00; 401.00 - 499.00 (uitgesonderd 460.03/0207.14.9/01.07)	Verenigde State van Amerika	940c/kg
201.02	0207.14.99	01.08	81	Ander	301.00 - 399.00; 401.00 - 499.00 (uitgesonderd 460.03/0207.14.9/01.07)	Verenigde State van Amerika	940c/kg
202.00	PLANT PRODUKTE						
202.02	EETBARE GROENTE EN SEKERE WORTELS EN KNOLE						
202.02	0703.20	01.06	64	Knoffel, vars of verkoel	301.00 - 399.00; 401.00 - 499.00	China	1 925c/kg
202.02	0712.90.90	01.08	80	Gedroogde knoffel, in die vorm van bolle of huisies	301.00 - 399.00; 401.00 - 499.00	China	1 925c/kg
205.01	SOUT; SWAVEL; AARDES EN KLIP; PLEISTERSTOWWE, KALK EN SEMENT						
205.01	2523.29	01.06	65	Portlandsement vervaardig of geproduseer deur Lucky Cement Limited	301.00 - 399.00; 401.00 - 499.00	Pakistan	14.29%
205.01	2523.29	02.06	63	Portlandsement vervaardig of geproduseer deur Bestway Cement Limited	301.00 - 399.00; 401.00 - 499.00	Pakistan	77.15%
205.01	2523.29	03.06	64	Portlandsement vervaardig of geproduseer deur D.G Khan Cement Limited	301.00 - 399.00; 401.00 - 499.00	Pakistan	68.87%
205.01	2523.29	04.06	69	Portlandsement vervaardig of geproduseer deur Attock Pakistan Cement Limited	301.00 - 399.00; 401.00 - 499.00	Pakistan	63.53%
205.01	2523.29	05.06	63	Portlandsement (uitgesonderd dié vervaardig of geproduseer deur Lucky Cement Limited, Bestway Cement Limited, D.G Khan Cement Limited, Attock Pakistan Cement Limited)	301.00 - 399.00; 401.00 - 499.00	Pakistan	62.69%
206.00	PRODUKTE VAN DIE CHEMIESE OF VERWANTE NYWERHEDE						
206.01	ANORGANIESE CHEMIKALIE; ORGANIESE OF ANORGANIESE SAMESTELLINGS VAN EDELMETALE; VAN SELDSAME AARDMETALE; VAN RADIOAKTIEWE GRONDSTOWWE OF VAN ISOTOPE						

Item	Tariefpos	Kode	TS	Beskrywing	Kortingtens	Ingevoer vanaf of Oorspronklik van	Skaal van Anti-dumpingreg
206.01	2836.20	01.06	63	Disodiumkarbonaat vervaardig deur OCI Chemical Corporation	301.00 - 399.00; 401.00 - 499.00	Verenigde State van Amerika	21%
206.01	2836.20	02.06	68	Disodiumkarbonaat vervaardig deur TATA Chemicals (SODA ASH) Partners INC (TCSAP)	301.00 - 399.00; 401.00 - 499.00	Verenigde State van Amerika	8%
206.01	2836.20	03.06	62	Disodiumkarbonaat (uitgesonderd dié vervaardig deur TATA Chemicals (SODA ASH) Partners INC. (TCSAP) en OCI Chemical Corporation)	301.00 - 399.00; 401.00 - 499.00	Verenigde State van Amerika	40%
206.02	ORGANIESE CHEMIKALIEÛ						
206.04	BEREIDE PIGMENTE, BEREIDE KONTRASMIDDELS EN BEREIDE KLEURE, VERGLASBARE EMALJES EN GLASURE, ENGOBES (KLEIPAPPE), VLOEIBARE VERGLANSMIDDELS EN DERGELIKE PREPARATE, VAN 'N SOORT WAT IN DIE KERAMIEK-, EMALJE- OF GLASNYWERHEID GEBRUIK WORD; SINTERGLAS EN ANDER GLAS, IN DIE VORM VAN POEIE KORRELS OF VLOKKE						
206.04	3207.40	01.06	67	Sinterglas en ander glas in die vorm van poeier, korrels of vlokke vervaardig of uitgevoer deur Smalticeram Do Brazil Ltda	301.00 - 399.00; 401.00 - 499.00	Brasiilië	24,65%
206.04	3207.40	02.06	61	Sinterglas en ander glas in die vorm van poeier, korrels of vlokke (uitgesonderd dié vervaardig of uitgevoer deur Smalticeram Do Brazil Ltda)	301.00 - 399.00; 401.00 - 499.00	Brasiilië	50%
207.00	PLASTIEKE EN ARTIKELS DAARVAN; RUBBER EN ARTIKELS DAARVAN						
207.01	PLASTIEKE EN ARTIKELS DAARVAN						
207.01	3907.60.9	01.07	70	Polietileen(tereftalaat), in primêre vorms (uitgesonderd vloeistowwe en pastas)	301.00 - 399.00; 401.00 - 499.00	Taiwan, Provinsie van China	75%
207.01	3907.60.9	02.07	75	Polietileen(tereftalaat), in primêre vorms (uitgesonderd vloeistowwe en pastas)	301.00 - 399.00; 401.00 - 499.00	Indië	54,1%
207.01	3907.60.9	03.07	71	Polietileen(tereftalaat), in primêre vorms (uitgesonderd vloeistowwe en pastas)	301.00 - 399.00; 401.00 - 499.00	Republiek van Korea	19,7%
207.01	3920.49	01.06	62	Plate, velle, film, foelie en reep, van polimere van vinielchloried (PVC), nie-sellulêre en nie-versterk, gelamelleer, gesteun of op dergelike wyse met ander stowwe saamgevoeg nie, en met 'n plastieseermiddel inhoud van hoogstens 6% (uitgesonderd PVC repe met 'n deursneddike van 2 mm en -wydte van hoogstens 20 mm)	301.00 - 399.00; 401.00 - 499.00 (uitgesonderd 307.04/3920.4/01.05; 315.12/3920.4/01.05; 460.07/3920.49/01.06; 460.07/3920.49/02.06)	China	32,7%
207.01	3920.49	02.06	67	Plate, velle, film, foelie en reep, van polimere van vinielchloried (PVC), nie-sellulêre en nie-versterk, gelamelleer, gesteun of op dergelike wyse met ander stowwe saamgevoeg nie en met 'n plastieseermiddel inhoud van 6%	301.00 - 399.00; 401.00 - 499.00 (uitgesonderd 307.4/3920.4/01.05; 315.12/3920.4/01.05; 460.07/3920.49/01.06; 460.07/3920.49/02.06)	Taiwan, Provinsie van China	22,6%
210.00	PULP VAN HOUT OF VAN ANDER VESELAGTIGE SELULOSIESE STOF; AFVAL EN OORSKIET VAN PAPIER OF PAPIERBORD; PAPIER EN PAPIERBORD EN ARTIKELS DAARVAN						
210.02	PAPIER EN PAPIERBORD; ARTIKELS VAN PAPIERPULP, VAN PAPIER OF VAN PAPIERBORD						
211.00	TEKSTIELE EN TEKSTIELARTIKELS						

Item	Tariefpos	Kode	TS	Beskrywing	Kortgingtjems	Ingevoer vanaf of Oorspronklik van	Skaal van Anti-dumpingreg
213.00	ARTIKELS VAN KLIP, GIPS, SEMENT, ASBES, MIKA, OF DERGELIKE STOWWE; KERAMIESE PRODUKTE; GLAS EN GLASWARE						
213.02	ARTIKELS VAN PLEISTER OF VAN KOMPOSISIES OP PLEISTER GEBASEER						
213.02	6809.11	05.06	65	Plankke, velle, panele, teëls en dergelike artikels van pleister of van komposities op pleister gebaseer, met 'n voorkant of versterk slegs met papier of papierbord, nie versier nie	301.00 - 399.00; 401.00 - 499.00	Thailand	45%
213.02	6809.11	06.06	66	Plankke, velle, panele, teëls en dergelike artikels van pleister of van komposities op pleister gebaseer, met 'n voorkant of versterk slegs met papier of papierbord, nie versier nie	301.00 - 399.00; 401.00 - 499.00	Indonesië	34,6%
213.03	GLAS EN GLASWARE						
213.03	7004.90.90	01.08	88	Getrokke glas en geblaasde glas, in velle, hetsy met 'n absorberende of weerkaatsende laag al dan nie, maar nie andersins bewerk nie, met 'n dikte van meer as 2,5 mm maar hoogstens 6 mm (uitgesonderd optiese glas)	301.00 - 399.00; 401.00 - 499.00	China	562c/m ²
213.03	7004.90.90	02.08	82	Getrokke glas en geblaasde glas, in velle, hetsy met 'n absorberende of weerkaatsende laag al dan nie, maar nie andersins bewerk nie, met 'n dikte van meer as 2,5 mm maar hoogstens 6 mm (uitgesonderd optiese glas)	301.00 - 399.00; 401.00 - 499.00	Indië	587c/m ²
213.03	7005.29.05	02.08	89	Son glas, met 'n dikte van meer as 2,5 mm maar hoogstens 3 mm	301.00 - 399.00; 401.00 - 499.00	Indonesië	45%
213.03	7005.29.05	05.08	82	Son glas, met 'n dikte van meer as 3 mm maar hoogstens 4 mm (uitgesonderd dié vervaardig deur PT Muliaglass Industrino en PT Abdi Rakyat Bakti)	301.00 - 399.00; 401.00 - 499.00	Indonesië	10%
213.03	7005.29.05	07.08	81	Son glas, met 'n dikte van meer as 4 mm maar hoogstens 5 mm (uitgesonderd dié vervaardig deur PT Muliaglass Industrino en PT Abdi Rakyat Bakti)	301.00 - 399.00; 401.00 - 499.00	Indonesië	12,51%
213.03	7005.29.05	10.08	83	Son glas, met 'n dikte van meer as 5 mm maar hoogstens 6 mm	301.00 - 399.00; 401.00 - 499.00	Indonesië	30,5%

Item	Tariefpos	Kode	TS	Beskrywing	Kortingitems	Ingevoer vanaf of Oorspronklik van	Skaal van Anti-dumpingreg
213.03	7005.29.17	01.08	81	Afstrykglas en glas met die oppervlak geslyp of gepoleer, in velle, hetsy met 'n absorberende, weerkaatsende of nie-weerkaatsende laag al dan nie, maar nie andersins bewerk nie, met 'n dikte van meer as 2,5 mm maar hoogstens 3 mm (uitgesonderd son glas en optiese glas)	301.00 - 399.00; 401.00 - 499.00	Indië	720c/m ²
213.03	7005.29.17	02.08	86	Afstrykglas en glas met die oppervlak geslyp of gepoleer, in velle, hetsy met 'n absorberende, weerkaatsende of nie-weerkaatsende laag al dan nie, maar nie andersins bewerk nie, met 'n dikte van meer as 2,5 mm maar hoogstens 3 mm (uitgesonderd son glas en optiese glas)	301.00 - 399.00; 401.00 - 499.00	Indonesië	45%
213.03	7005.29.17	03.08	80	Afstrykglas en glas met die oppervlak geslyp of gepoleer, in velle, hetsy met 'n absorberende, weerkaatsende of nie-weerkaatsende laag al dan nie, maar nie andersins bewerk nie, met 'n dikte van meer as 2,5 mm maar hoogstens 3 mm (uitgesonderd son glas en optiese glas)	301.00 - 399.00; 401.00 - 499.00	China	802c/m ²
213.03	7005.29.23	01.08	82	Afstrykglas en glas met die oppervlak geslyp of gepoleer, in velle, hetsy met 'n absorberende, weerkaatsende of nie-weerkaatsende laag al dan nie, maar nie andersins bewerk nie, met 'n dikte van meer as 3 mm maar hoogstens 4 mm (uitgesonderd son glas en optiese glas)	301.00 - 399.00; 401.00 - 499.00	Indië	886c/m ²
213.03	7005.29.23	02.08	87	Afstrykglas en glas met die oppervlak geslyp of gepoleer, in velle, hetsy met 'n absorberende, weerkaatsende of nie-weerkaatsende laag al dan nie, maar nie andersins bewerk nie, met 'n dikte van meer as 3 mm maar hoogstens 4 mm (uitgesonderd son glas en optiese glas) (uitgesonderd dié vervaardig deur PT Mulliaglass Industino en PT Abdi Rakyat Bakti)	301.00 - 399.00; 401.00 - 499.00	Indonesië	10%
213.03	7005.29.23	03.08	81	Afstrykglas en glas met die oppervlak geslyp of gepoleer, in velle, hetsy met 'n absorberende, weerkaatsende of nie-weerkaatsende laag al dan nie, maar nie andersins bewerk nie, met 'n dikte van meer as 3 mm maar hoogstens 4 mm (uitgesonderd son glas en optiese glas)	301.00 - 399.00; 401.00 - 499.00	China	802c/m ²
213.03	7005.29.25	01.08	88	Afstrykglas en glas met die oppervlak geslyp of gepoleer, in velle, hetsy met 'n absorberende, weerkaatsende of nie-weerkaatsende laag al dan nie, maar nie andersins bewerk nie, met 'n dikte van meer as 4 mm maar hoogstens 5 mm (uitgesonderd son glas en optiese glas) (uitgesonderd dié vervaardig deur PT Mulliaglass Industino en PT Abdi Rakyat Bakti)	301.00 - 399.00; 401.00 - 499.00	Indonesië	12,51%
213.03	7005.29.25	02.08	82	Afstrykglas en glas met die oppervlak geslyp of gepoleer, in velle, hetsy met 'n absorberende, weerkaatsende of nie-weerkaatsende laag al dan nie, maar nie andersins bewerk nie, met 'n dikte van meer as 4 mm maar hoogstens 5 mm (uitgesonderd son glas en optiese glas)	301.00 - 399.00; 401.00 - 499.00	China	802c/m ²
213.03	7005.29.35	01.08	85	Afstrykglas en glas met die oppervlak geslyp of gepoleer, in velle, hetsy met 'n absorberende, weerkaatsende of nie-weerkaatsende laag al dan nie, maar nie andersins bewerk nie, met 'n dikte van meer as 5 mm maar hoogstens 6 mm (uitgesonderd son glas en optiese glas)	301.00 - 399.00; 401.00 - 499.00	Indië	1 387c/m ²
213.03	7005.29.35	02.08	84	Afstrykglas en glas met die oppervlak geslyp of gepoleer, in velle, hetsy met 'n absorberende, weerkaatsende of nie-weerkaatsende laag al dan nie, maar nie andersins bewerk nie, met 'n dikte van meer as 5 mm maar hoogstens 6 mm (uitgesonderd son glas en optiese glas)	301.00 - 399.00; 401.00 - 499.00	Indonesië	30,5%

Item	Tariefpos	Kode	TS	Beskrywing	Kortingtjems	Ingevoer vanaf of Oorspronklik van	Skaal van Anti-dumpingreg
213.03	7005.29.35	03.08	89	Afstrykglas en glas met die oppervlak geslyp of gepoleer, in velle, heitsy met 'n absorberende, weerkaatsende of nie-weerkaatsende laag al dan nie, maar nie andersins bewerk nie, met 'n dikte van meer as 5 mm maar hoogstens 6 mm (uitgesonderd son glas en optiese glas)	301.00 - 399.00; 401.00 - 499.00	China	802c/m ²
213.03	7009.91	01.06	60	Ongeraaamde glasspieëls, met 'n dikte van minstens 2 mm maar hoogstens 6 mm	301.00 - 399.00; 401.00 - 499.00	Indië	68,74%
213.03	7009.91	02.06	65	Ongeraaamde glasspieëls, met 'n dikte van minstens 2 mm maar hoogstens 6 mm (uitgesonderd dié vervaardig deur PT Matahari Silverindo Jaya)	301.00 - 399.00; 401.00 - 499.00	Indonesië	6,61%
213.03	7009.91	03.06	69	Ongeraaamde glasspieëls, met 'n dikte van minstens 2 mm maar hoogstens 6 mm	301.00 - 399.00; 401.00 - 499.00	China	40,22%
215.00	ONDELMEETALE						
215.02	ARTIKELS VAN YSTER OF STAAL						
215.02	7312.10.20	01.08	82	Stringdraad, van yster of staal, nie elektries geïsoleer nie, met 'n dwarsdeursnee van 12,7 mm of meer (uitgesonderd dié van draad wat geplateer, bestryk of bedek is met koper of tin en dié wat uitkenbaar is as endlosebandkoord)	301.00 - 399.00; 401.00 - 499.00	China	113,25%
215.02	7312.10.25	03.08	85	Toue en kables, van yster of staal, nie elektries geïsoleer nie, met 'n dwarsdeursnee van meer as 32 mm (uitgesonderd dié van draad van vlekvrystaal, dié van draad wat geplateer, bestryk of bedek is met koper en dié wat uitkenbaar is as endlosebandkoord), (uitgesonderd dié ingevoer vanaf Bridon International Limited)	301.00 - 399.00; 401.00 - 499.00	Verenigde Koninkryk	76,17%
215.02	7312.10.25	04.08	85	Toue en kables, van yster of staal, nie elektries geïsoleer nie, met 'n dwarsdeursnee van meer as 32 mm (uitgesonderd dié van draad van vlekvrystaal, dié van draad wat geplateer, bestryk of bedek is met koper en dié wat uitkenbaar is as endlosebandkoord), (uitgesonderd dié ingevoer vanaf Bridon International Gmbh en Pfeifer Drako)	301.00 - 399.00; 401.00 - 499.00	Duitsland	93%
215.02	7312.10.40	03.08	85	Toue en kables, van yster of staal, nie elektries geïsoleer nie, met 'n dwarsdeursnee van meer as 32 mm (uitgesonderd dié van draad van vlekvrystaal, dié van draad wat geplateer, bestryk of bedek is met koper en dié wat uitkenbaar is as endlosebandkoord), (uitgesonderd dié ingevoer vanaf Bridon International Limited)	301.00 - 399.00; 401.00 - 499.00	Verenigde Koninkryk	76,17%
215.02	7312.10.40	04.08	87	Toue en kables, van yster of staal, nie elektries geïsoleer nie, met 'n dwarsdeursnee van meer as 32 mm (uitgesonderd dié van draad van vlekvrystaal, dié van draad wat geplateer, bestryk of bedek is met koper en dié wat uitkenbaar is as endlosebandkoord), (uitgesonderd dié ingevoer vanaf Bridon International Gmbh en Pfeifer Drako)	301.00 - 399.00; 401.00 - 499.00	Duitsland	93%
215.02	7312.10.90	03.08	84	Toue en kables, van yster of staal, nie elektries geïsoleer nie, met 'n dwarsdeursnee van meer as 32 mm (uitgesonderd dié van draad van vlekvrystaal, dié van draad wat geplateer, bestryk of bedek is met koper en dié wat uitkenbaar is as endlosebandkoord), (uitgesonderd dié ingevoer vanaf Bridon International Limited)	301.00 - 399.00; 401.00 - 499.00	Verenigde Koninkryk	76,17%
215.02	7312.10.90	04.08	89	Toue en kables, van yster of staal, nie elektries geïsoleer nie, met 'n dwarsdeursnee van meer as 32 mm (uitgesonderd dié van draad van vlekvrystaal, dié van draad wat geplateer, bestryk of bedek is met koper en dié wat uitkenbaar is as endlosebandkoord), (uitgesonderd dié ingevoer vanaf Bridon International Gmbh en Pfeifer Drako)	301.00 - 399.00; 401.00 - 499.00	Duitsland	93%
215.02	7318.15.39	01.08	88	Volledige skroefdraad skroewe met seskantige koppe, (uitgesonderd dié van vlekvrystaal) met 'n skroefdraaddeursnee van minstens 6 mm maar hoogstens 36 mm en 'n lengte van minstens 10 mm maar hoogstens 400 mm vervaardig en ingevoer deur Ningbo Jinding Fastening Piece Co Ltd	301.00 - 399.00; 401.00 - 499.00	China	19,3%

Item	Tariefpos	Kode	TS	Beskrywing	Kortingitems	Ingevoer vanaf of Oorspronklik van	Skaal van Anti-dumpingreg
215.02	7318.15.39	02.08	82	Volledige skroefdraad skroewe met seskantige koppe, (uitgesonderd dié van vlekvrystaal) met 'n skroefdraaddeursnee van minstens 6 mm maar hoogstens 36 mm en 'n lengte van minstens 10 mm maar hoogstens 400 mm vervaardig deur Zhejiang Laibao Precision Technology Co Ltd, uitgevoer deur Shanghai Wisechain Fasteners Ltd en Shanghai Wisechain Trading Ltd	301.00 - 399.00; 401.00 - 499.00	China	11,09%
215.02	7318.15.39	03.08	87	Volledige skroefdraad skroewe met seskantige koppe, (uitgesonderd dié van vlekvrystaal) met 'n skroefdraaddeursnee van minstens 6 mm maar hoogstens 36 mm en 'n lengte van minstens 10 mm maar hoogstens 400 mm (uitgesonderd dié vervaardig en uitgevoer deur Zhejiang Zhapu Industrial Co Ltd, dié vervaardig en uitgevoer deur Ningbo Xingyi Fasteners Co Ltd, dié vervaardig deur Shanghai Biao Wu High Tensile Fasteners Co Ltd en uitgevoer deur Shanghai Prime Machinery Co Ltd en dié vervaardig en uitgevoer deur Wenzhou Zhongsheng Hardware Co Ltd)	301.00 - 399.00; 401.00 - 499.00	China	73,93%
215.02	7318.15.43	01.08	83	Boute, van yster of staal, met seskantige koppe (uitgesonderd boue van vlekvrystaal, boue toegerus met onedelmetaal uitset hulsel en boue identifiseerbaar vir gebruik slegs of hoofsaaklik op vliegtuie), met 'n wydte van 6 mm of meer maar hoogstens 36 mm en 'n lengte van 10 mm of meer maar hoogstens 400 mm, met of sonder hulle moere en wasters (uitgesonderd dié vervaardig deur Ningbo Jinding Fastening Piece Company Limited)	301.00 - 399.00; 401.00 - 499.00	China	55,4%
215.02	7318.16.20	01.08	87	Selssluitende moere (uitgesonderd daardie met 'n skroefdraaddeursnee van meer as 10 mm)	301.00 - 399.00; 401.00 - 499.00	China	122,7%
215.02	7318.16.30	01.08	81	Ander, seskantige moere met 'n skroefdraaddeursnee van minstens 6 mm of meer maar hoogstens 36 mm	301.00 - 399.00; 401.00 - 499.00	China	122,7%
215.02	7324.10	03.06	64	Wasbakke van vlekvrystaal (uitgesonderd dié vervaardig of geproduseer deur Taijing Chuanger Metal Products Co. Ltd.)	301.00 - 399.00; 401.00 - 499.00	China	62,41%
215.02	7324.10	05.06	63	Wasbakke van vlekvrystaal	301.00 - 399.00; 401.00 - 499.00	Maleisië	95,86%
215.11	GEREEDSKAP, IMPLEMENTE, SNYGEREDSKAP, LEPELS EN VURKE, VAN ONEDELMETAAL; ONDERDELE DAARVAN VAN ONEDELMETAAL						
215.11	8201.10.10	01.08	85	Grawe en skopgrawe, met 'n maksimum lemydte van meer as 200 mm maar hoogstens 320 mm	301.00 - 399.00; 401.00 - 499.00	China	158,1c/kg
215.11	8201.30.03	01.08	86	Pikke	301.00 - 399.00; 401.00 - 499.00	China	262,7c/kg
215.11	8201.30.90	01.08	84	Harke met minstens 8 tande	301.00 - 399.00; 401.00 - 499.00	China	369,2c/kg
215.11	8201.90.20	01.08	85	Vurke, met 'n tandlengte van meer as 150 mm (uitgesonderd vurke met 8 of meer tande)	301.00 - 399.00; 401.00 - 499.00	China	480c/kg

Item	Tariefpos	Kode	TS	Beskrywing	Kortingsiems	Ingevoer vanaf of Oorspronklik van	Skaal van Anti-dumpingreg
215.12	ONEDELMETAAL EN ARTIKELS VAN ONEDELMETALE						
216.02	ELEKTRIESE MASJINERIE EN TOERUSTING EN ONDERDELE DAARVAN; KLANKOPNEMERS EN WEERGEWERS, TELEVISIEBEELD EN -KLANKOPNEMERS EN -WEERGEWERS, EN ONDERDELE EN BYBEHOORSELS VAN SODANIGE ARTIKELS						
216.02	8544.60.10	01.08	80	Elektriese kabel (uitgesonderd ontstekingsbedradingstelsel en ander bedradingstelsel van 'n soort in voertuie, vliegtuie en skepe gebruik en koaksiale kabel), geïsoleer met papier en met lood bedek, vir 'n spanning van meer as 1 000 V	301.00 - 399.00; 401.00 - 499.00	Indië	65,47%
217.00	VOERTUIE, LUGVAARTUIE, VAARTUIE EN VERWANTE VERVOERTOERUSTING						
217.02	VOERTUIE (UITGESONDERD ROLLENDE SPOORWEG- OF TREINWEGMATERIAAL), EN ONDERDELE EN BYBEHOORSELS DAARVAN						
217.02	8716.80.10	01.08	89	Kruiswaens vervaardig deur Qingdao Youhe Handtruck Co. Ltd	301.00 - 399.00; 401.00 - 499.00	China	32,32%
217.02	8716.80.10	02.08	83	Kruiswaens vervaardig deur Qingdao Wantai Special Handtruck Co. Ltd	301.00 - 399.00; 401.00 - 499.00	China	39,92%
217.02	8716.80.10	03.08	88	Kruiswaens (uitgesonderd dié vervaardig deur Qingdao Yongyi Metal Products Co. Ltd; Qingdao Youhe Handtruck Co. Ltd en Qingdao Wantai Special Handtruck Co. Ltd)	301.00 - 399.00; 401.00 - 499.00	China	29,82%

WARNING!!!

To all suppliers and potential suppliers of goods to the Government Printing Works

The Government Printing Works would like to warn members of the public against an organised syndicate(s) scamming unsuspecting members of the public and claiming to act on behalf of the Government Printing Works.

One of the ways in which the syndicate operates is by requesting quotations for various goods and services on a quotation form with the logo of the Government Printing Works. Once the official order is placed the syndicate requesting upfront payment before delivery will take place. Once the upfront payment is done the syndicate do not deliver the goods and service provider then expect payment from Government Printing Works.

Government Printing Works condemns such illegal activities and encourages service providers to confirm the legitimacy of purchase orders with GPW SCM, prior to processing and delivery of goods.

To confirm the legitimacy of purchase orders, please contact:

Renny Chetty (012) 748-6375 (Renny.Chetty@gpw.gov.za),

Anna-Marie du Toit (012) 748-6292 (Anna-Marie.DuToit@gpw.gov.za) and

Siraj Rizvi (012) 748-6380 (Siraj.Rizvi@gpw.gov.za)

Printed by and obtainable from the Government Printer, Bosman Street, Private Bag X85, Pretoria, 0001
Contact Centre Tel: 012-748 6200. eMail: info.egazette@gpw.gov.za
Publications: Tel: (012) 748 6053, 748 6061, 748 6065