



Government Gazette Staatskoerant

REPUBLIC OF SOUTH AFRICA
REPUBLIEK VAN SUID AFRIKA

Vol. 615

12 September
September 2016

No. 40267

N.B. The Government Printing Works will not be held responsible for the quality of "Hard Copies" or "Electronic Files" submitted for publication purposes

ISSN 1682-5843



9 771682 584003

40267



AIDS HELPLINE: 0800-0123-22 Prevention is the cure

IMPORTANT NOTICE:

THE GOVERNMENT PRINTING WORKS WILL NOT BE HELD RESPONSIBLE FOR ANY ERRORS THAT MIGHT OCCUR DUE TO THE SUBMISSION OF INCOMPLETE / INCORRECT / ILLEGIBLE COPY.

No FUTURE QUERIES WILL BE HANDLED IN CONNECTION WITH THE ABOVE.

Contents

<i>No.</i>		<i>Gazette No.</i>	<i>Page No.</i>
GOVERNMENT NOTICES • GOEWERMENTSKENNISGEWINGS			
Transport, Department of/ Vervoer, Departement van			
1008	South African National Roads Agency Limited and National Roads Act (7/1998): Declaration amendment of National Road N2 Section 8—De-declaration of a section as National Road: National Road N2 section 8: Swartvlei—Blaauw Krantz River	40267	4
1008	Wet op Suid-Afrikaanse Nasionale Padagentskap Beperk en Nasionale Paaie (7/1998): Verklaring wysiging van Nasionale Pad N2 Seksie 8—Afverklaring van 'n gedeelte as Nasionale Pad: Nasionale Pad N2 Seksie 8: Swartvlei—Blaauw Krantz River	40267	5
1009	South African National Roads Agency Limited and National Roads Act (7/1998): Declaration of existing Provincial Road – P166 – Sections 1 and 2 as National Road R40 Section 2X – District of Nelspruit, in the Province of Mpumalanga: National Road R40 Section 2X: Maggiesdal – N4 Section 7	40267	6
1009	Wet op Suid-Afrikaanse Nasionale Padagentskap Beperk en Nasionale Paaie (7/1998): Verklaring van bestaande Provinsiale Pad – P166 Seksies 1 en 2 as Nasionale Pad R40 Seksie 2X – Distrik van Nelspruit, in die provinsie van Mpumalanga: Nasionale Pad R40 Seksie 2X: Maggiesdal – N4 Seksie 7	40267	7

GOVERNMENT NOTICES • GOEWERMENTSKENNISGEWINGS

DEPARTMENT OF TRANSPORT

NO. 1008

12 SEPTEMBER 2016

**THE SOUTH AFRICAN NATIONAL ROADS
AGENCY SOC LIMITED**

Registration No: 1998/009584/30

**DECLARATION AMENDMENT OF NATIONAL ROAD N2 SECTION 8 – DE-DECLARATION OF A
SECTION AS NATIONAL ROAD**

By virtue of Section 40 (1)(b) of The South African National Roads Agency Limited and the National Roads Act, 1998 (Act No. 7 of 1998), I hereby amend declaration No. 421 of 2016 by de-declaring the section of road from points L209 and R251, on sheet 14 of Plan No. P797/11, up to points L242 and R289, on sheet 16 of Plan No. P797/11, as a National Road.

(National Road N2 Section 8: Swartvlei – Blaauw Krantz River)



MINISTER OF TRANSPORT

DEPARTEMENT VAN VERVOER

NO. 1008

12 SEPTEMBER 2016

**DIE SUID-AFRIKAANSE NASIONALE
PADAGENTSKAP MSB BEPERK**

Registrasie No: 1998/009584/30

**VERKLARING WYSIGING VAN NASIONALE PAD N2 SEKSIE 8 – AFVERKLARING VAN 'N
GEDEELTE AS NASIONALE PAD.**

Kragtens Artikel 40(1)(b) van die Wet op die Suid-Afrikaanse Nasionale Padagentskap Beperk en op Nasionale Paaie, 1998 (Wet no.7 van 1998), wysig ek hiermee Verklaring No. 421 van 2016 deur die gedeelte van die pad vanaf punte L209 en R251, op vel 14 van Plan No. P797/11, tot by punte L242 en R289, op vel 16 van Plan No. P797/11, af te verklaar as Nasionale Pad.

(Nasionale Pad N2 Seksie 8: Swartvlei – Blaauw Krantz River)



MINISTER VAN VERVOER

DEPARTMENT OF TRANSPORT

NO. 1009

12 SEPTEMBER 2016

**THE SOUTH AFRICAN NATIONAL ROADS
AGENCY SOC LIMITED****Registration No: 1998/009584/30**

**DECLARATION OF EXISTING PROVINCIAL ROAD – P166 SECTIONS 1 AND 2 AS
NATIONAL ROAD R40 SECTION 2X – DISTRICT OF NELSPRUIT, IN THE PROVINCE OF
MPUMALANGA.**

By virtue of Section 40(1)(a) of The South African National Roads Agency Limited and National Roads Act, 1998 (Act No. 7 of 1998), I hereby declare Route R40 Section 2X, also known as Provincial Road P166 Sections 1 and 2, as declared by Administrator's Notices No. 930 of 1984, No. 286 of 1988, No. 287 of 1988, No. 125 of 2008 and all other Administrator's Notices which might be relevant to this section of road, as depicted on the accompanying sheets 1 to 13 of Plan No. P806/12, as a National Road.

(National Road R40 Section 2X: Maggiesdal – N4 Section 7)



MINISTER OF TRANSPORT

DEPARTEMENT VAN VERVOER

NO. 1009

12 SEPTEMBER 2016

**DIE SUID-AFRIKAANSE NASIONALE
PADAGENTSKAP MSB BEPERK**

Registrasie No: 1998/009584/30

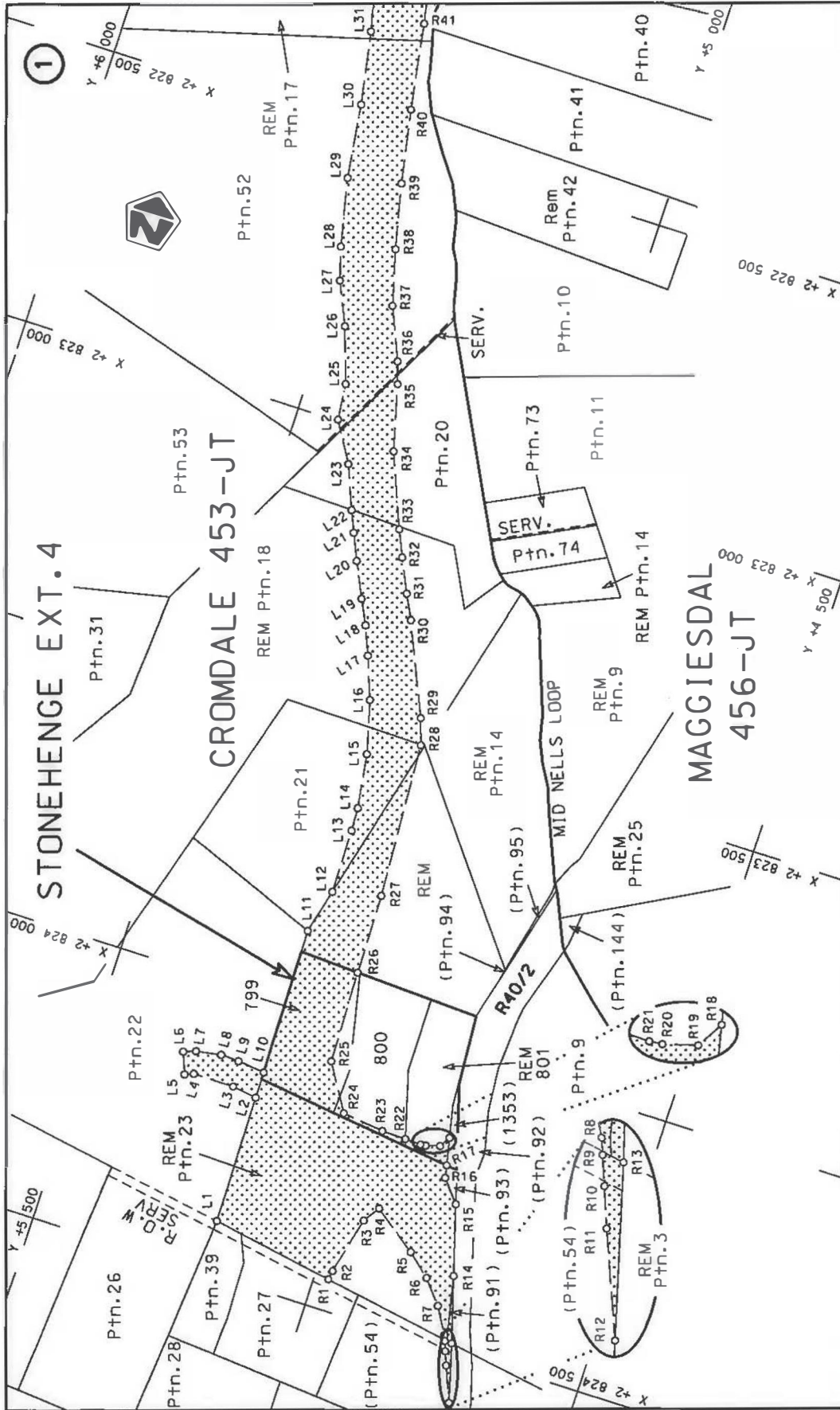
**VERKLARING VAN BESTAANDE PROVINSIALE PAD – P166 SEKSIES 1 EN 2 AS
NASIONALE PAD R40 SEKSIE 2X – DISTRIKT VAN NELSPRUIT, IN DIE PROVINSIE VAN
MPUMALANGA.**

Kragtens Artikel 40(1)(a) van die Wet op die Suid-Afrikaanse Nasionale Padagentskap Beperk en op Nasionale Paaie, Wet 1998 (Wet No. 7 van 1998), verklaar ek hiermee Roete R40 Seksie 2X, ook bekend as Provinsiale Pad P166 Seksies 1 en 2, soos verklaar deur Administrateurskenningsgewings No. 930 van 1984, No. 286 van 1988, No. 287 van 1988, No. 125 van 2008 en alle ander Administrateurskenningsgewings wat betrekking op hierdie gedeelte van die pad mag hê, soos aangedui op die bygaande velle 1 tot 13 van Plan No. P806/12, as 'n Nasionale Pad.

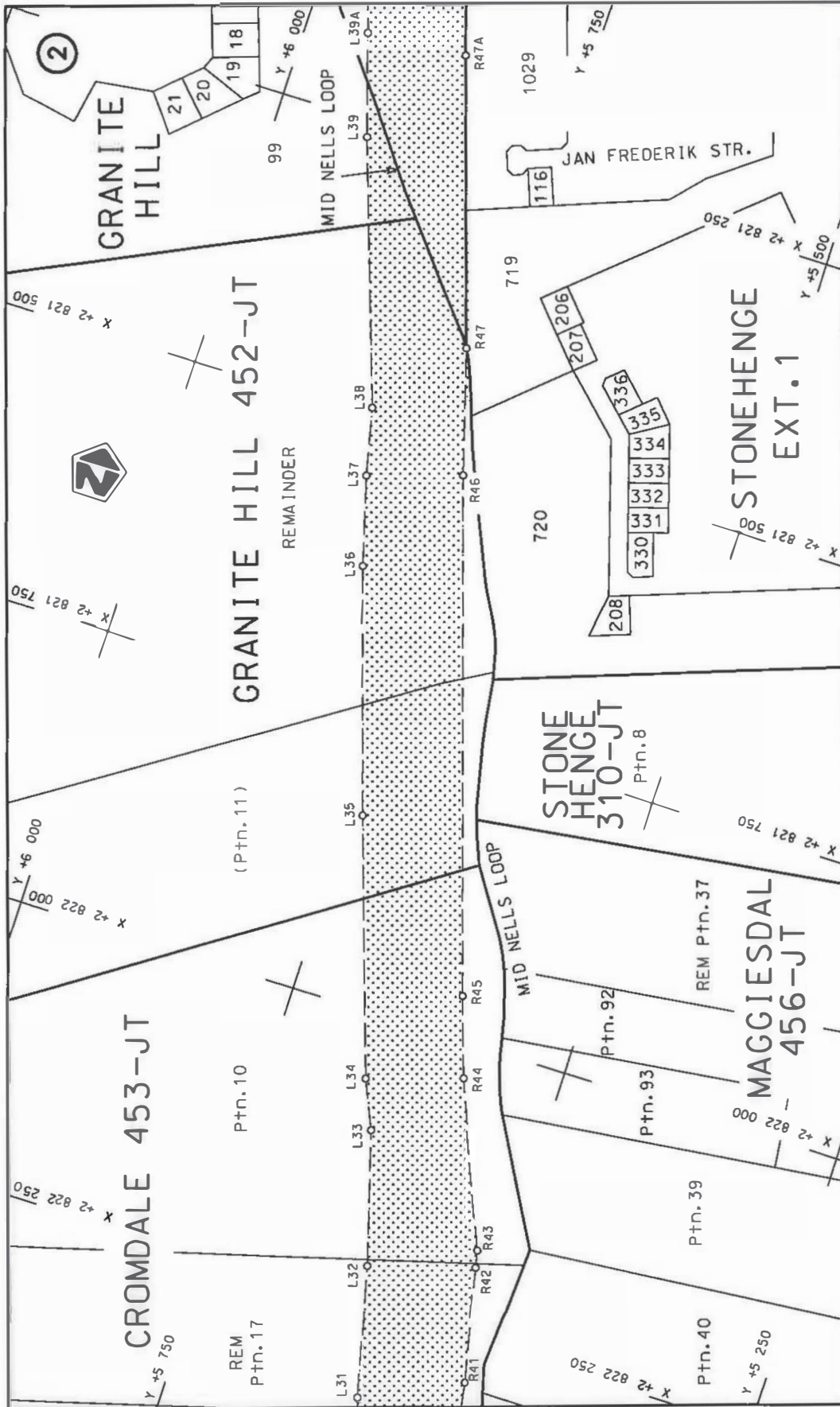
(Nasionale Pad R40 Seksie 2X: Maggiesdal – N4 Seksie 7)




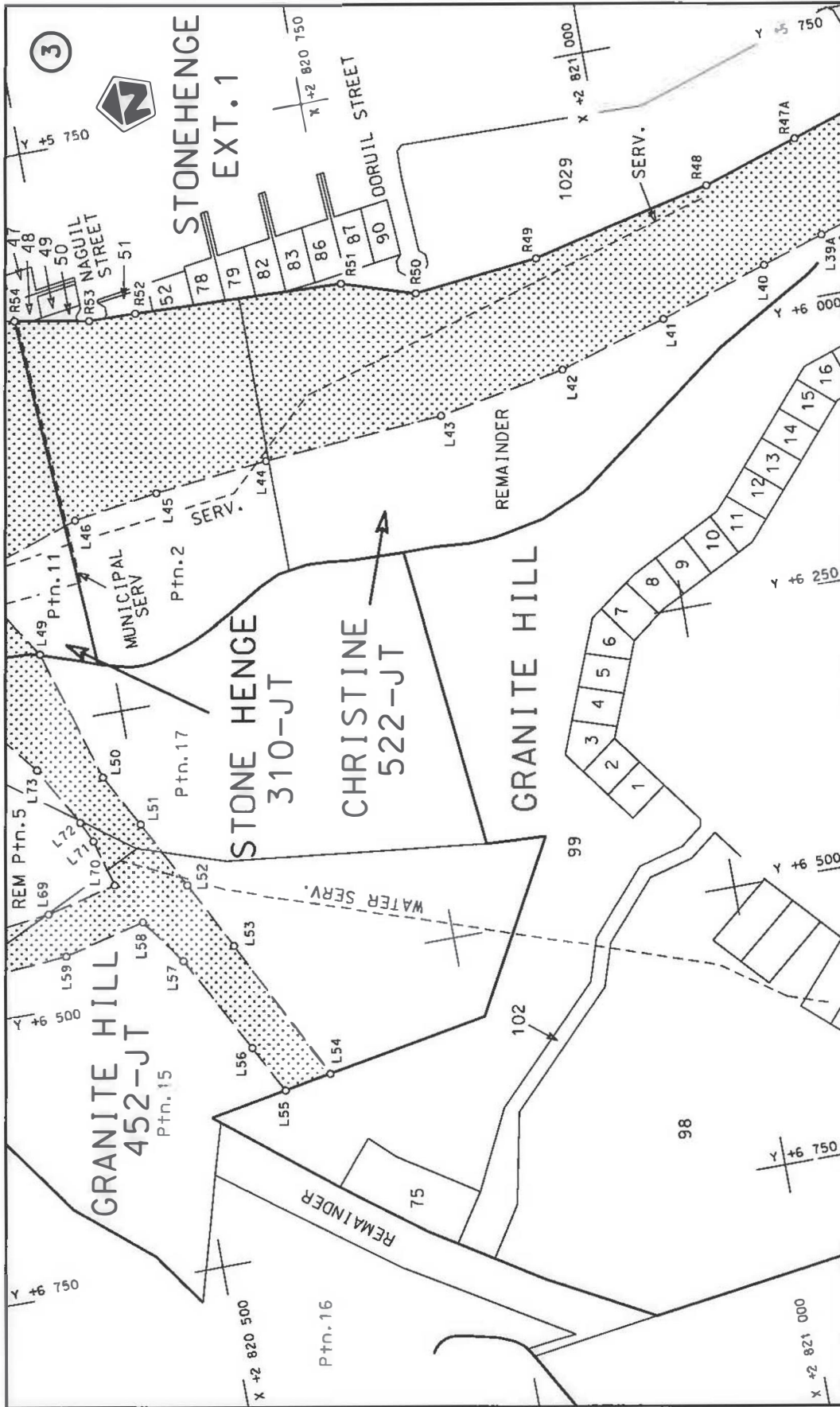
MINISTER VAN VERVOER




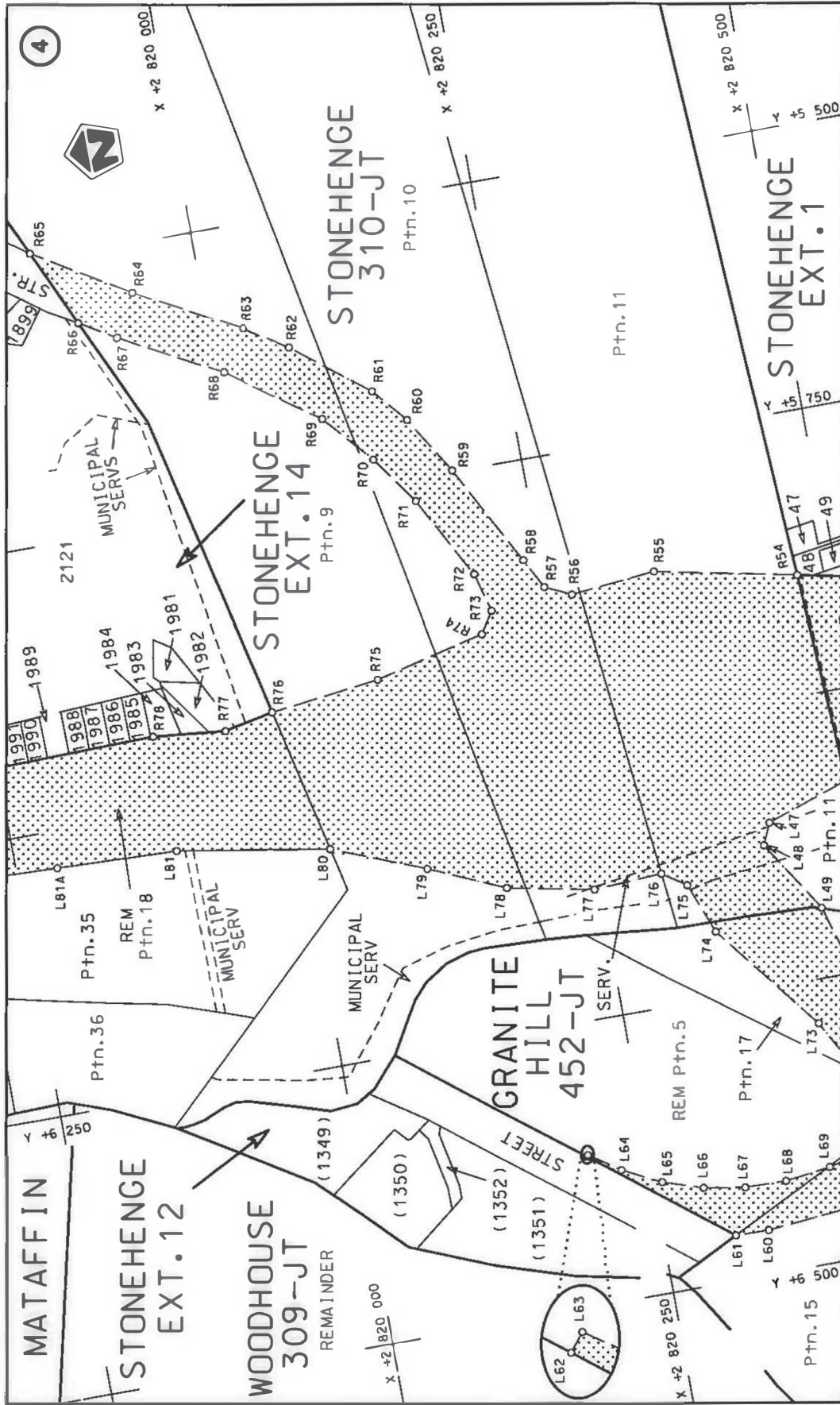
<p>Die Suid Afrikaanse Nasionale Podogentskop MSB Bpk The South African National Roads Agency SOC Ltd</p>	<p>Die figuur getoon The figure shown</p>	<p>stel die padreserwe voor van 'n gedeelte represents the road reserve of a portion van Nasionale Roete R40 of National Route R40 Seksie Section</p>	<p>Vel Sheet 1 of 13 Plan P806/12</p>
---	---	---	---



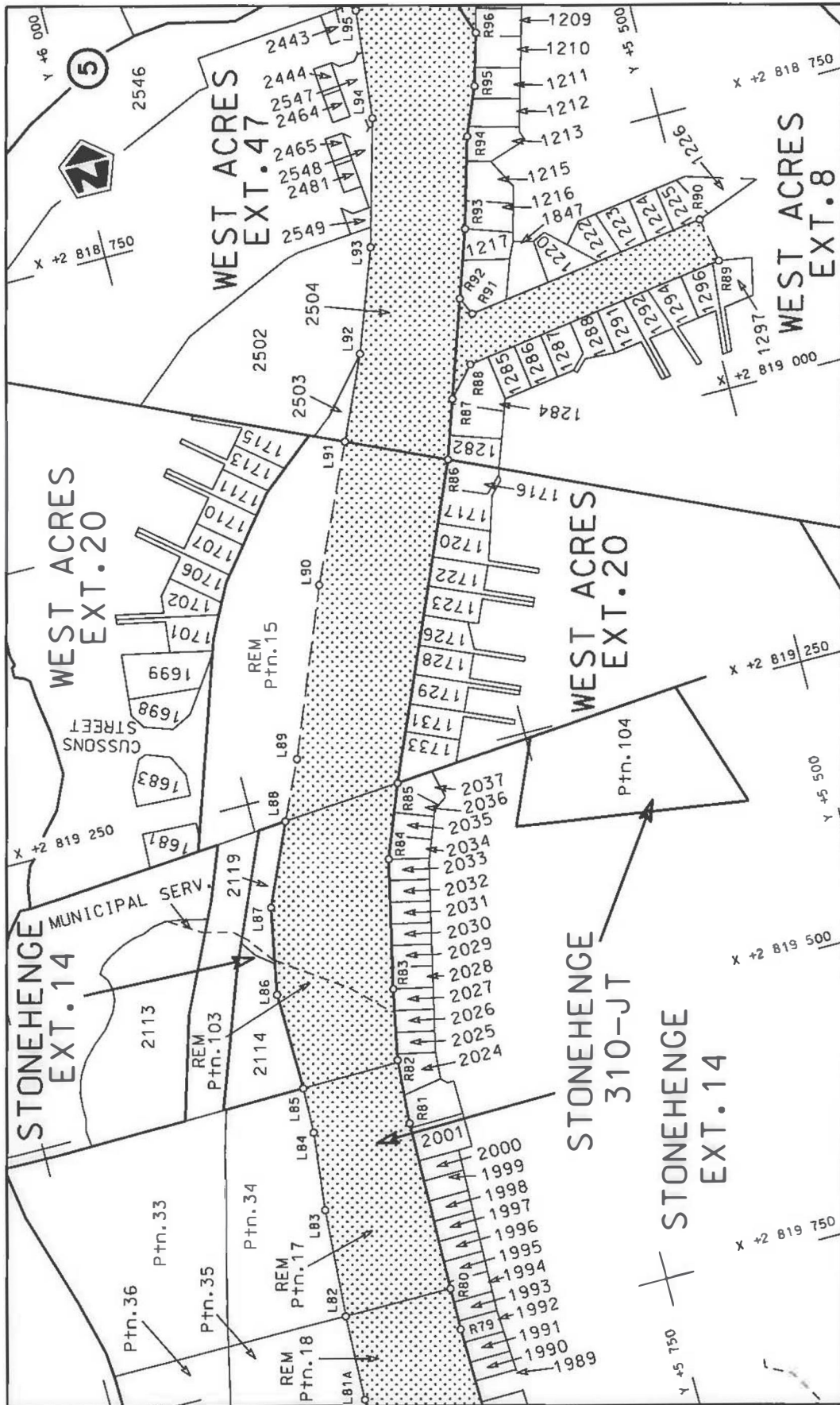
Die Suid Afrikaanse Nasionale Podogentskop MSB Bpk The South African National Roads Agency SOC Ltd	Die figuur getoon The figure shown	 stelde padreserwe voor van 'n gedeelte represents the road reserve of a portion van Nasionale Roete R40 of National Route Section	Vel Sheet 2 of 13 Plan P806/12
---	---------------------------------------	--	-----------------------------------




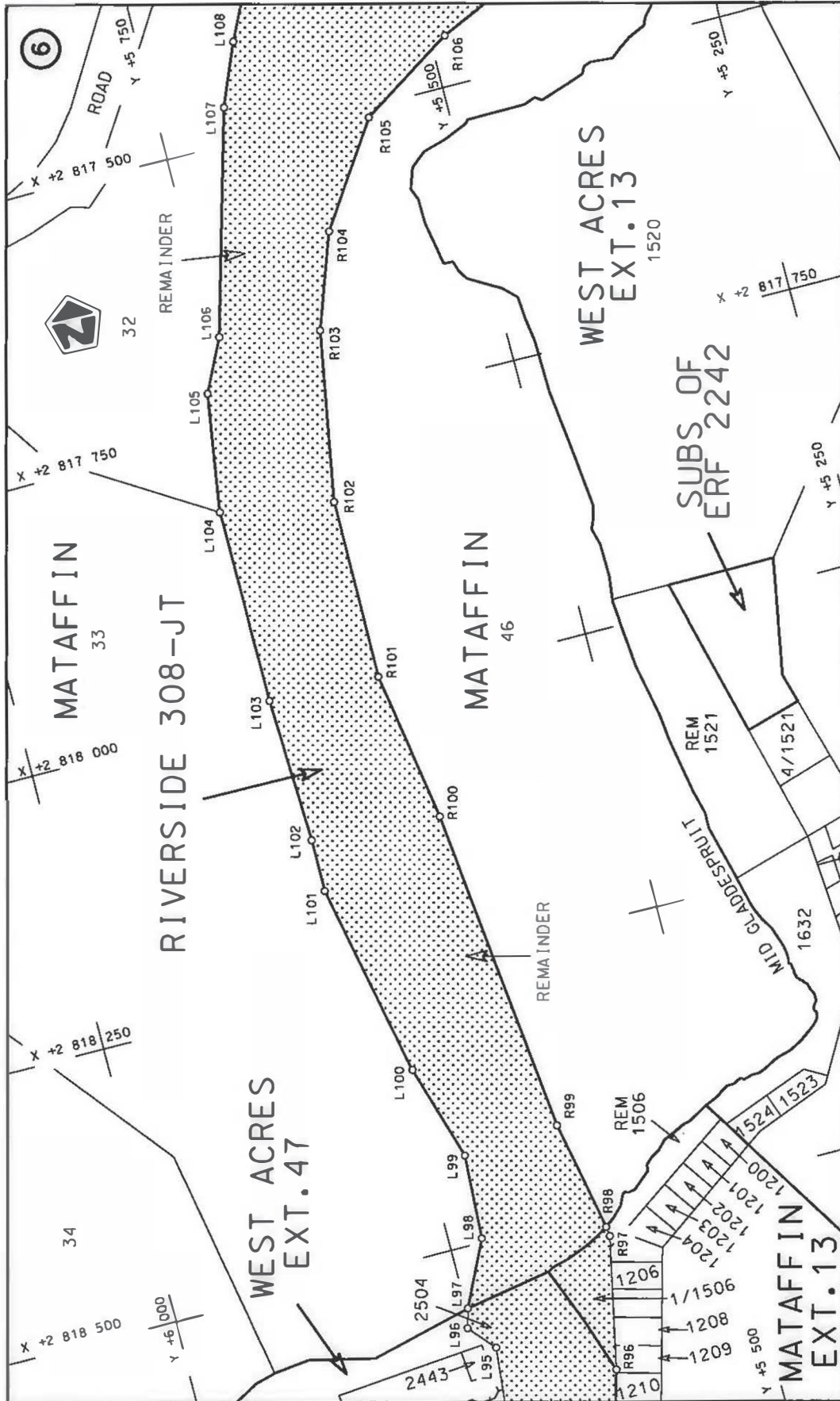
Die Suid Afrikaanse Nasionale Padagentskap MSB Bpk The South African National Roads Agency SOC Ltd	Die figuur getoon The figure shown	 stedie padreserwe voor 'n gedeelte represents the road reserve of a portion van Nasionale Roete R40 of National Route R40 Section	Vel Sheet 3 of 13 Plan P806/12
---	---------------------------------------	--	-----------------------------------



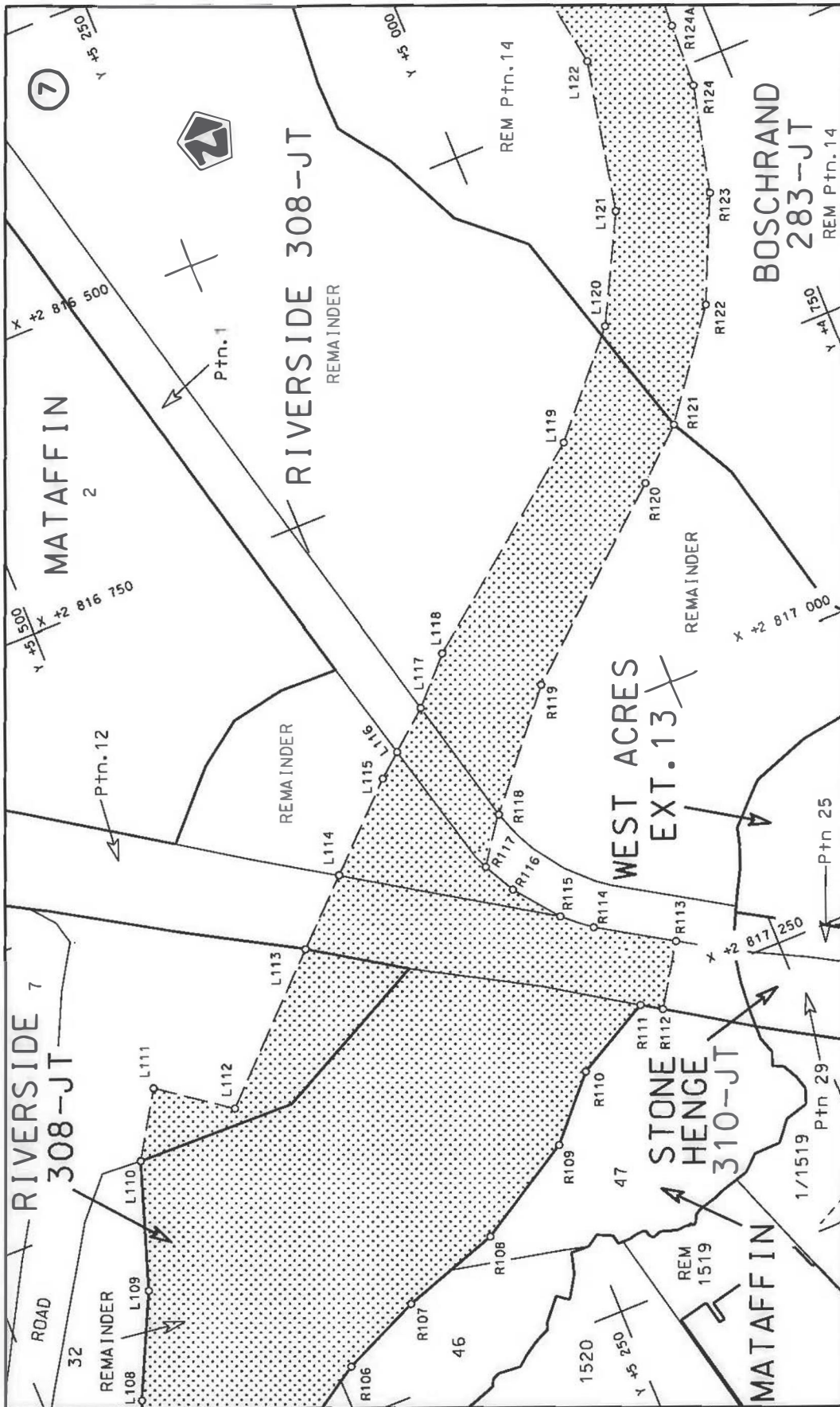
<p>Die Suid Afrikaanse Nasionale Padogentskap MSB Bpk The South African National Roads Agency SOC Ltd</p>	<p>Die figuur getoon The figure shown</p>	<p>stelt die padreserwe voor van 'n gedeelte represents the road reserve of a portion van Nasionale Roete R40 of National Route R40</p> <p>Seksie 2X Section</p>	<p>Vel Sheet 4 of 13 Plan P806/12</p>
---	---	--	---



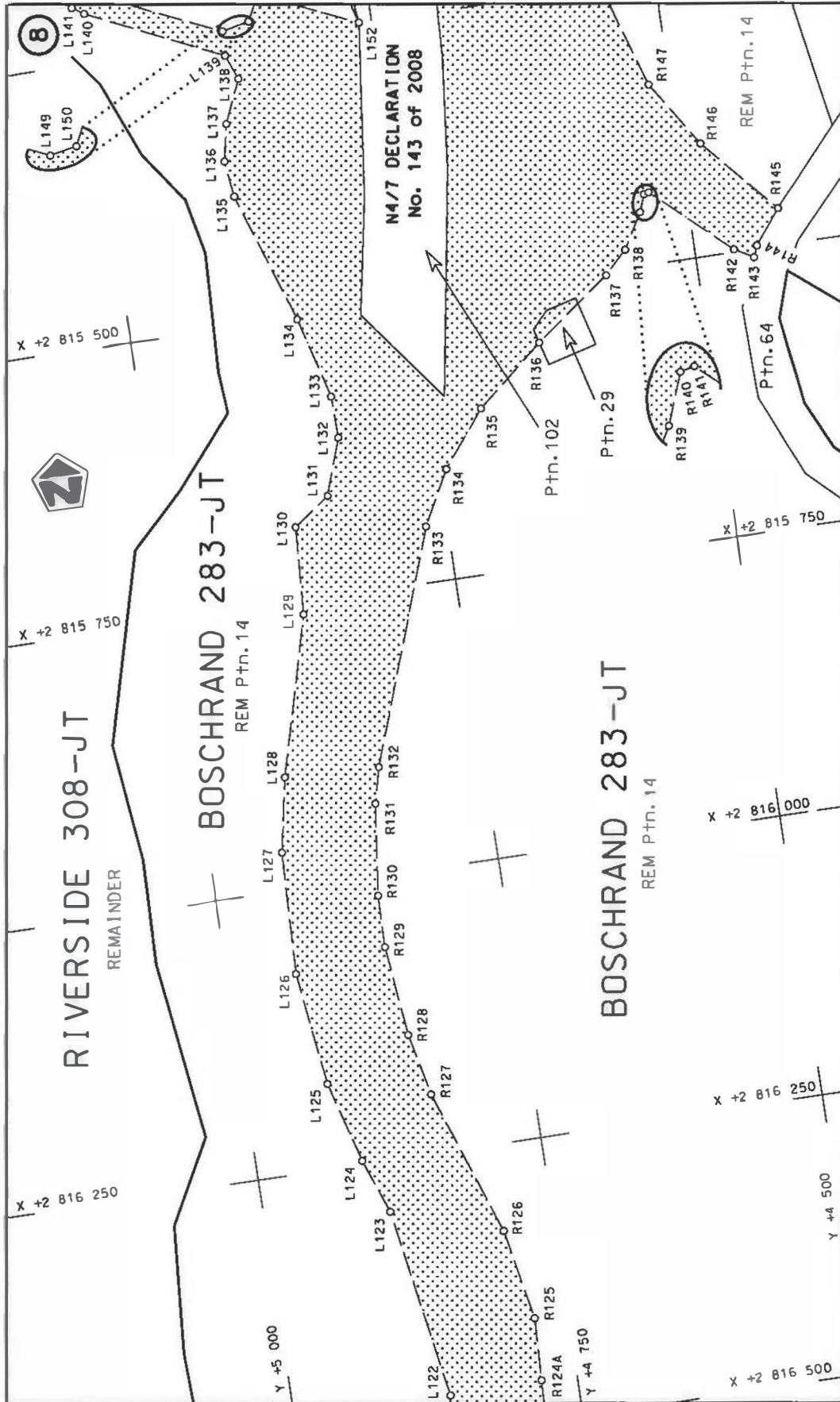
Die Suid Afrikaanse Nasionale Padagentskap MSB Bpk The South African National Roads Agency SOC Ltd	Die figuur getoon The figure shown		steldie podreserwe voor van 'n gedeelte represents the road reserve of a portion van Nasionale Roete R40 of National Route	Vel Sheet 5 of 13
				Plan P806/12



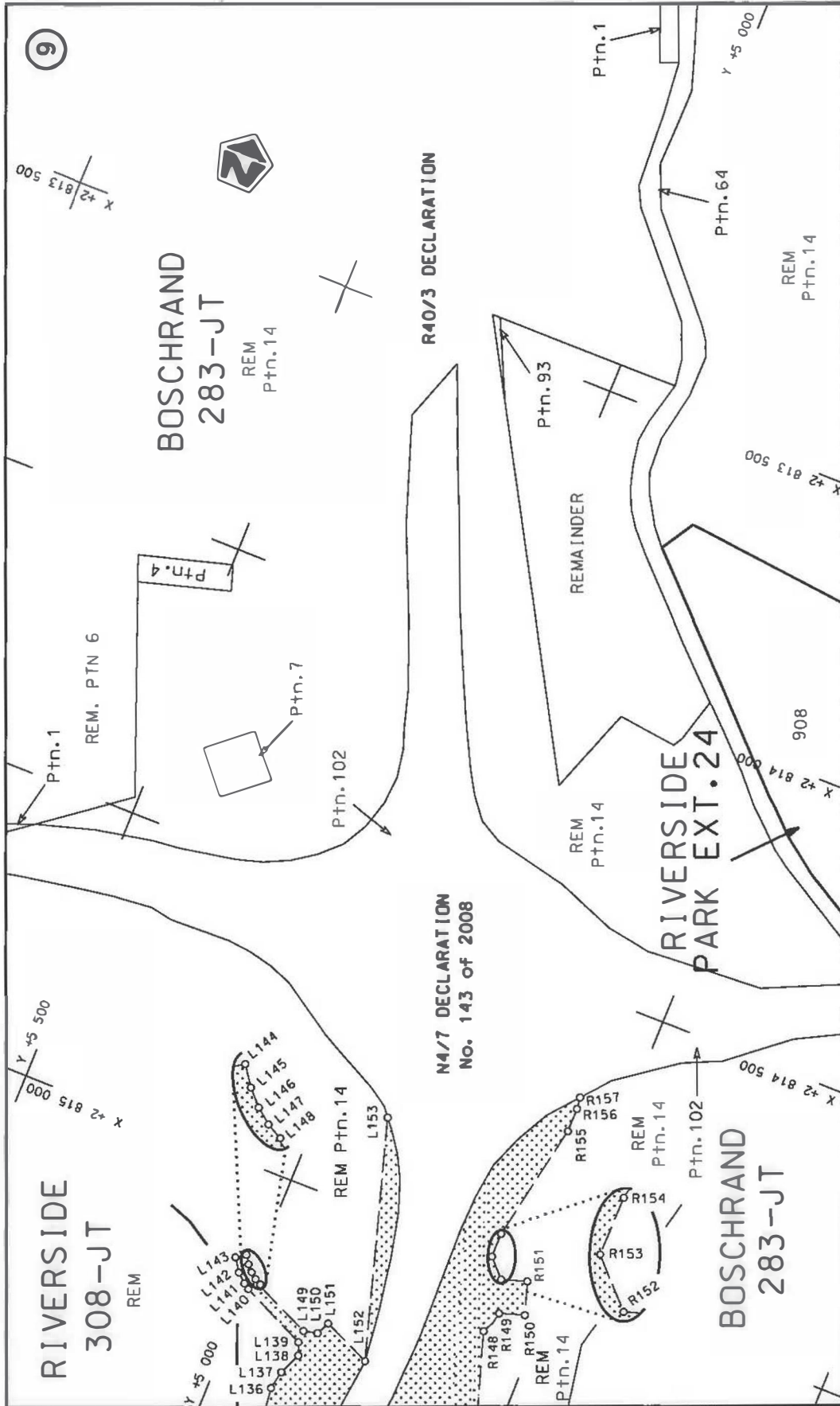
<p>Die Suid Afrikaanse Nasionale Padagentskap MSB Bpk The South African National Roads Agency SOC Ltd</p>	<p>Die figuur getoon The figure shown</p>	<p>stelt die podreserwe voor van 'n gedeelte represents the road reserve of a portion van Nasionale Roete R40 of National Route</p>	<p>Vel Sheet 6 of 13</p>
		<p>Die figuur getoon The figure shown</p>	<p>Plan P806/12</p>
		<p>Section 2X</p>	




Die Suid Afrikaanse Nasionale Padagentskap MSB Bpk The South African National Roads Agency SOC Ltd	Die figuur getoon The figure shown		stel die podreserwe voor van 'n gedeelte represents the road reserve of a portion van Nasionale Roete R40 of National Route Section	Vel Sheet 7 of 13
			2X Sektie Section	Plan P806/12



Die Suid Afrikaanse Nasionale Podogentskap MSB Bpk The South African National Roads Agency SOC Ltd	Die figuur getoon The figure shown	steldie podreserwe voor van 'n gedeelte represents the road reserve of a portion van Nasionale Roete R40 of National Route Section	2X	Plan P806/12
		Vel Sheet 8 of 13		



Die Suid Afrikaanse Nasionale Podogentskap MSB Bpk The South African National Roads Agency SOC Ltd	Die figuur getoon The figure shown	 stel die padreserwe voor van 'n gedeelte represents the road reserve of a portion van Nasionale Roete R40 of National Route R40 2X Sektie Section	Vel Sheet 9 van of 13 Plan P806/12
---	---------------------------------------	---	---

PADRESERWE KOÖRDINATE / ROAD RESERVE CO-ORDINATES						
LINKERKANT/LEFT HAND SIDE			REGTERKANT/RIGHT HAND SIDE			
	Y	X	WG 31°		Y	X
L1	5 192.40	2 824 406.69		R1	4 975.05	2 824 444.70
L2	5 195.33	2 824 179.26		R2	4 972.33	2 824 428.41
L3	5 238.96	2 824 172.52		R3	4 947.97	2 824 327.08
L4	5 310.83	2 824 171.87		R4	4 928.88	2 824 298.78
L5	5 325.92	2 824 177.73		R5	4 852.02	2 824 354.90
L6	5 340.48	2 824 140.20		R6	4 811.67	2 824 389.76
L7	5 319.56	2 824 132.84		R7	4 777.67	2 824 430.56
L8	5 275.99	2 824 125.58		R8	4 750.77	2 824 476.36
L9	5 243.85	2 824 127.26		R9	4 747.15	2 824 485.76
L10	5 195.93	2 824 132.60		R10	4 740.55	2 824 502.89
L11	5 199.27	2 823 871.15		R11	4 731.59	2 824 526.18
L12	5 179.24	2 823 792.27		R12	4 706.68	2 824 587.36
L13	5 180.77	2 823 679.10		R13	4 734.25	2 824 486.20
L14	5 182.65	2 823 638.23		R14	4 767.59	2 824 371.99
L15	5 196.95	2 823 542.68		R15	4 803.08	2 824 250.46
L16	5 221.55	2 823 450.05		R16	4 834.93	2 824 211.90
L17	5 249.08	2 823 376.77		R17	4 839.21	2 824 190.05
L18	5 269.43	2 823 326.93		R18	4 849.55	2 824 142.56
L19	5 290.35	2 823 285.69		R19	4 860.81	2 824 161.35
L20	5 318.80	2 823 224.76		R20	4 884.98	2 824 168.27
L21	5 339.17	2 823 179.07		R21	4 894.39	2 824 169.16
L22	5 354.91	2 823 142.29		R22	4 922.52	2 824 168.24
L23	5 385.55	2 823 066.44		R23	4 965.57	2 824 166.83
L24	5 427.36	2 822 997.46		R24	5 039.81	2 824 157.92
L25	5 433.69	2 822 933.52		R25	5 088.69	2 824 077.26
L26	5 466.44	2 822 836.93		R26	5 093.11	2 823 914.37
L27	5 499.97	2 822 763.09		R27	5 095.53	2 823 772.86
L28	5 517.00	2 822 705.53		R28	5 111.59	2 823 498.80
L29	5 543.16	2 822 586.63		R29	5 126.59	2 823 453.16
L30	5 561.05	2 822 456.23		R30	5 196.45	2 823 294.16
L31	5 584.71	2 822 328.36		R31	5 217.37	2 823 252.92
L32	5 613.13	2 822 214.44		R32	5 244.70	2 823 194.60
L33	5 646.61	2 822 099.19		R33	5 265.07	2 823 148.91
L34	5 665.05	2 822 057.10		R34	5 317.37	2 823 020.97
L35	5 738.79	2 821 836.36		R35	5 346.97	2 822 905.94
L36	5 805.79	2 821 626.81		R36	5 359.47	2 822 867.94
L37	5 827.30	2 821 549.70		R37	5 398.45	2 822 777.33
L38	5 840.82	2 821 491.02		R38	5 424.26	2 822 680.71
L39	5 918.52	2 821 264.43		R39	5 450.19	2 822 567.09
L40	5 963.56	2 821 123.56		R40	5 474.94	2 822 438.13
L41	5 994.87	2 821 028.56		R41	5 500.21	2 822 286.83
L42	6 022.85	2 820 933.44		R42	5 522.00	2 822 187.25
L43	6 043.77	2 820 821.49		R43	5 525.17	2 822 172.33
L44	6 055.71	2 820 664.26		R44	5 583.17	2 822 030.81
L45	6 066.25	2 820 564.43		R45	5 606.27	2 821 961.86
L46	6 077.53	2 820 490.24		R46	5 746.37	2 821 523.72
L47	6 105.48	2 820 407.12		R47	5 778.28	2 821 415.29
L48	6 124.33	2 820 398.75		R48	5 885.12	2 821 086.47
L49	6 187.98	2 820 439.04		R49	5 921.72	2 820 927.96
L50	6 304.88	2 820 473.93		R50	5 933.18	2 820 818.89
L51	6 351.66	2 820 498.87		R51	5 913.00	2 820 756.79

Vel	10	Van	13	P806/12
Sheet		of		

PADRESERWE KOÖRDINATE / ROAD RESERVE CO-ORDINATES						
LINKERKANT/LEFT HAND SIDE				REGTERKANT/RIGHT HAND SIDE		
	Y	X	WG 31°		Y	X
L52	6 412.25	2 820	529.74	R52	5 906.65	2 820 574.48
L53	6 472.13	2 820	560.21	R53	5 905.99	2 820 533.83
L54	6 598.66	2 820	623.61	R54	5 894.45	2 820 469.87
L55	6 606.17	2 820	582.33	R55	5 868.35	2 820 346.27
L56	6 564.05	2 820	560.21	R56	5 875.73	2 820 272.10
L57	6 477.20	2 820	514.59	R57	5 864.72	2 820 249.66
L58	6 437.46	2 820	485.48	R58	5 837.99	2 820 236.04
L59	6 454.62	2 820	413.85	R59	5 748.59	2 820 188.96
L60	6 460.75	2 820	342.57	R60	5 697.42	2 820 157.63
L61	6 460.10	2 820	313.39	R61	5 666.93	2 820 131.74
L62	6 367.81	2 820	196.91	R62	5 615.38	2 820 066.80
L63	6 366.57	2 820	197.89	R63	5 592.02	2 820 029.87
L64	6 385.00	2 820	224.41	R64	5 543.17	2 819 940.67
L65	6 401.83	2 820	257.68	R65	5 493.16	2 819 858.64
L66	6 413.43	2 820	292.69	R66	5 562.77	2 819 890.41
L67	6 419.74	2 820	328.98	R67	5 580.09	2 819 920.64
L68	6 420.68	2 820	365.37	R68	5 627.10	2 820 006.78
L69	6 415.49	2 820	405.54	R69	5 683.05	2 820 084.50
L70	6 400.79	2 820	466.88	R70	5 726.71	2 820 122.16
L71	6 359.13	2 820	455.56	R71	5 769.56	2 820 152.57
L72	6 340.87	2 820	447.35	R72	5 842.59	2 820 191.77
L73	6 288.31	2 820	418.35	R73	5 877.17	2 820 201.01
L74	6 191.83	2 820	343.38	R74	5 895.59	2 820 189.07
L75	6 146.79	2 820	326.04	R75	5 918.78	2 820 091.46
L76	6 132.64	2 820	305.35	R76	5 930.53	2 819 995.24
L77	6 136.03	2 820	245.38	R77	5 939.62	2 819 952.01
L78	6 120.76	2 820	170.60	R78	5 933.11	2 819 889.17
L79	6 091.78	2 820	104.99	R79	5 936.21	2 819 747.12
L80	6 058.99	2 820	024.10	R80	5 935.71	2 819 709.99
L81	6 036.48	2 819	891.56	R81	5 933.65	2 819 559.09
L82	6 030.13	2 819	710.59	R82	5 929.80	2 819 502.31
L83	6 023.96	2 819	615.10	R83	5 917.74	2 819 440.33
L84	6 016.46	2 819	546.10	R84	5 892.76	2 819 327.94
L85	6 015.38	2 819	505.92	R85	5 870.05	2 819 264.83
L86	6 017.03	2 819	419.82	R86	5 754.33	2 818 998.86
L87	6 002.83	2 819	343.62	R87	5 737.16	2 818 947.86
L88	5 971.61	2 819	272.95	R88	5 714.21	2 818 922.18
L89	5 947.87	2 819	222.10	R89	5 480.62	2 818 888.00
L90	5 890.79	2 819	078.15	R90	5 487.79	2 818 848.47
L91	5 837.37	2 818	960.84	R91	5 701.51	2 818 879.11
L92	5 805.26	2 818	888.67	R92	5 708.50	2 818 862.78
L93	5 772.91	2 818	799.47	R93	5 688.92	2 818 804.63
L94	5 742.93	2 818	689.11	R94	5 666.83	2 818 725.66
L95	5 733.39	2 818	593.08	R95	5 649.55	2 818 684.10
L96	5 753.20	2 818	570.24	R96	5 636.82	2 818 638.49
L97	5 748.60	2 818	553.32	R97	5 612.76	2 818 522.50
L98	5 721.22	2 818	496.19	R98	5 613.78	2 818 513.71
L99	5 717.14	2 818	421.40	R99	5 632.97	2 818 415.64
L100	5 742.81	2 818	336.24	R100	5 663.40	2 818 124.63
L101	5 777.83	2 818	162.93	R101	5 684.80	2 817 990.92
L102	5 777.68	2 818	116.52	R102	5 683.90	2 817 831.53

Vel	11	Van	13	P806/12
Sheet		of		

PADRESERWE KOÖRDINATE / ROAD RESERVE CO-ORDINATES						
LINKERKANT/LEFT HAND SIDE				REGTERKANT/RIGHT HAND SIDE		
	Y	X	WG 31°		Y	X
L103	5 782.47	2 817 987.44		R103	5 657.64	2 817 681.12
L104	5 783.03	2 817 815.10		R104	5 628.24	2 817 597.94
L105	5 767.11	2 817 710.43		R105	5 569.41	2 817 508.87
L106	5 744.69	2 817 664.52		R106	5 486.78	2 817 455.43
L107	5 690.22	2 817 468.20		R107	5 417.67	2 817 423.80
L108	5 667.89	2 817 413.65		R108	5 331.11	2 817 395.05
L109	5 625.66	2 817 326.09		R109	5 244.75	2 817 343.01
L110	5 588.95	2 817 217.23		R110	5 198.68	2 817 291.59
L111	5 554.36	2 817 161.76		R111	5 132.06	2 817 255.15
L112	5 494.64	2 817 205.47		R112	5 115.40	2 817 265.94
L113	5 384.45	2 817 098.34		R113	5 082.19	2 817 214.45
L114	5 332.95	2 817 048.79		R114	5 144.05	2 817 175.90
L115	5 265.60	2 816 983.98		R115	5 167.59	2 817 155.92
L116	5 245.20	2 816 966.89		R116	5 197.29	2 817 118.23
L117	5 211.44	2 816 938.60		R117	5 211.74	2 817 090.61
L118	5 175.83	2 816 901.04		R118	5 183.54	2 817 052.07
L119	5 007.04	2 816 769.10		R119	5 105.95	2 816 959.73
L120	4 934.75	2 816 687.46		R120	4 954.41	2 816 829.35
L121	4 887.85	2 816 596.57		R121	4 912.05	2 816 790.80
L122	4 861.36	2 816 463.99		R122	4 846.44	2 816 703.03
L123	4 889.26	2 816 295.17		R123	4 806.04	2 816 612.61
L124	4 906.99	2 816 246.78		R124	4 783.70	2 816 518.86
L125	4 927.25	2 816 174.52		R125	4 779.08	2 816 407.38
L126	4 940.21	2 816 074.09		R126	4 794.15	2 816 326.82
L127	4 936.36	2 815 965.95		R127	4 838.42	2 816 197.68
L128	4 923.91	2 815 900.45		R128	4 850.54	2 816 142.56
L129	4 886.33	2 815 760.54		R129	4 859.25	2 816 062.48
L130	4 881.82	2 815 683.10		R130	4 858.40	2 816 016.40
L131	4 849.83	2 815 659.88		R131	4 848.65	2 815 935.43
L132	4 832.91	2 815 610.28		R132	4 840.81	2 815 903.82
L133	4 833.68	2 815 573.35		R133	4 768.24	2 815 699.90
L134	4 853.18	2 815 501.05		R134	4 743.28	2 815 652.40
L135	4 891.57	2 815 385.27		R135	4 705.69	2 815 603.62
L136	4 895.55	2 815 353.18		R136	4 646.89	2 815 553.46
L137	4 889.20	2 815 320.69		R137	4 580.18	2 815 503.41
L138	4 872.84	2 815 282.56		R138	4 560.22	2 815 483.53
L139	4 881.27	2 815 260.51		R139	4 542.45	2 815 452.59
L140	4 997.28	2 815 205.48		R140	4 536.73	2 815 437.32
L141	5 007.27	2 815 198.88		R141	4 532.47	2 815 436.26
L142	5 023.39	2 815 184.49		R142	4 465.49	2 815 497.59
L143	5 039.03	2 815 161.85		R143	4 449.01	2 815 507.20
L144	5 023.01	2 815 150.78		R144	4 445.05	2 815 497.25
L145	5 013.10	2 815 164.70		R145	4 421.91	2 815 467.36
L146	5 002.74	2 815 175.79		R146	4 481.10	2 815 400.19
L147	4 992.04	2 815 184.36		R147	4 518.61	2 815 341.67
L148	4 980.77	2 815 190.35		R148	4 587.88	2 815 122.92
L149	4 880.49	2 815 238.75		R149	4 574.32	2 815 083.69
L150	4 856.60	2 815 233.67		R150	4 531.00	2 815 069.97
L151	4 845.81	2 815 210.92		R151	4 549.12	2 815 012.78
L152	4 760.97	2 815 248.99		R152	4 593.08	2 815 026.69
L153	4 884.79	2 814 834.75		R153	4 623.27	2 814 995.04

Vel	12	Van	13	P806/12
Sheet		of		

WARNING!!!

To all suppliers and potential suppliers of goods to the Government Printing Works

The Government Printing Works would like to warn members of the public against an organised syndicate(s) scamming unsuspecting members of the public and claiming to act on behalf of the Government Printing Works.

One of the ways in which the syndicate operates is by requesting quotations for various goods and services on a quotation form with the logo of the Government Printing Works. Once the official order is placed the syndicate requesting upfront payment before delivery will take place. Once the upfront payment is done the syndicate do not deliver the goods and service provider then expect payment from Government Printing Works.

Government Printing Works condemns such illegal activities and encourages service providers to confirm the legitimacy of purchase orders with GPW SCM, prior to processing and delivery of goods.

To confirm the legitimacy of purchase orders, please contact:

Renny Chetty (012) 748-6375 (Renny.Chetty@gpw.gov.za),

Anna-Marie du Toit (012) 748-6292 (Anna-Marie.DuToit@gpw.gov.za) and

Siraj Rizvi (012) 748-6380 (Siraj.Rizvi@gpw.gov.za)

Printed by and obtainable from the Government Printer, Bosman Street, Private Bag X85, Pretoria, 0001
Contact Centre Tel: 012-748 6200. eMail: info.egazette@gpw.gov.za
Publications: Tel: (012) 748 6053, 748 6061, 748 6065