



REVUE DE
L'ÉCONOMIE

DE LA
FRANCE



Vol. 647

**24 May
Mei 2019**

No. 42484

Contents

<i>No.</i>		<i>Gazette No.</i>	<i>Page No.</i>
GOVERNMENT NOTICES • GOEWERMENTSKENNISGEWINGS			
Transport, Department of/ Vervoer, Departement van			
801	South African National Roads Agency Limited and the National Roads Act (7/1998): Declaration Amendment of National Road N1 Section 1: Amendment of Declaration No. 337 of 2018.....	42484	4
801	Suid-Afrikaanse Nasionale Padagentskap Beperk en op Nasionale Paaie (7/1998): Verklaring Wysiging van Nasionale Pad N1 Seksie 1: Wysiging van Verklaring No. 337 van 2018.....	42484	5

GOVERNMENT NOTICES • GOEWERMENTSKENNISGEWINGS

DEPARTMENT OF TRANSPORT

NO. 801

24 MAY 2019

**THE SOUTH AFRICAN NATIONAL ROADS
AGENCY SOC LIMITED**

Registration No: 1998/009584/30

DECLARATION AMENDMENT OF NATIONAL ROAD N1 SECTION 1

AMENDMENT OF DECLARATION NO. 337 OF 2018.

By virtue of section 40(1)(b) of the South African National Roads Agency Limited and the National Roads Act, 1998 (Act No. 7 of 1998), I hereby amend Declaration No. 337 of 2018 by substituting sheets 5, 8, 11, 17, 27, 28, 29, 32, 33, 34, 35, 36 and 37 with the accompanying sheets 5A, 8A, 11A, 17A, 27A, 28A, 29A, 32A, 33A, 34A, 35A, 36A and 37A of Plan No. P958/17.

(National Road N1 Section 1: Old Oak Interchange – Klip River)



MINISTER OF TRANSPORT

DEPARTEMENT VAN VERVOER

NO. 801

24 MEI 2019

**DIE SUID-AFRIKAANSE NASIONALE
PADAGENTSKAP MSB BEPERK**

Registrasie No: 1998/009584/30

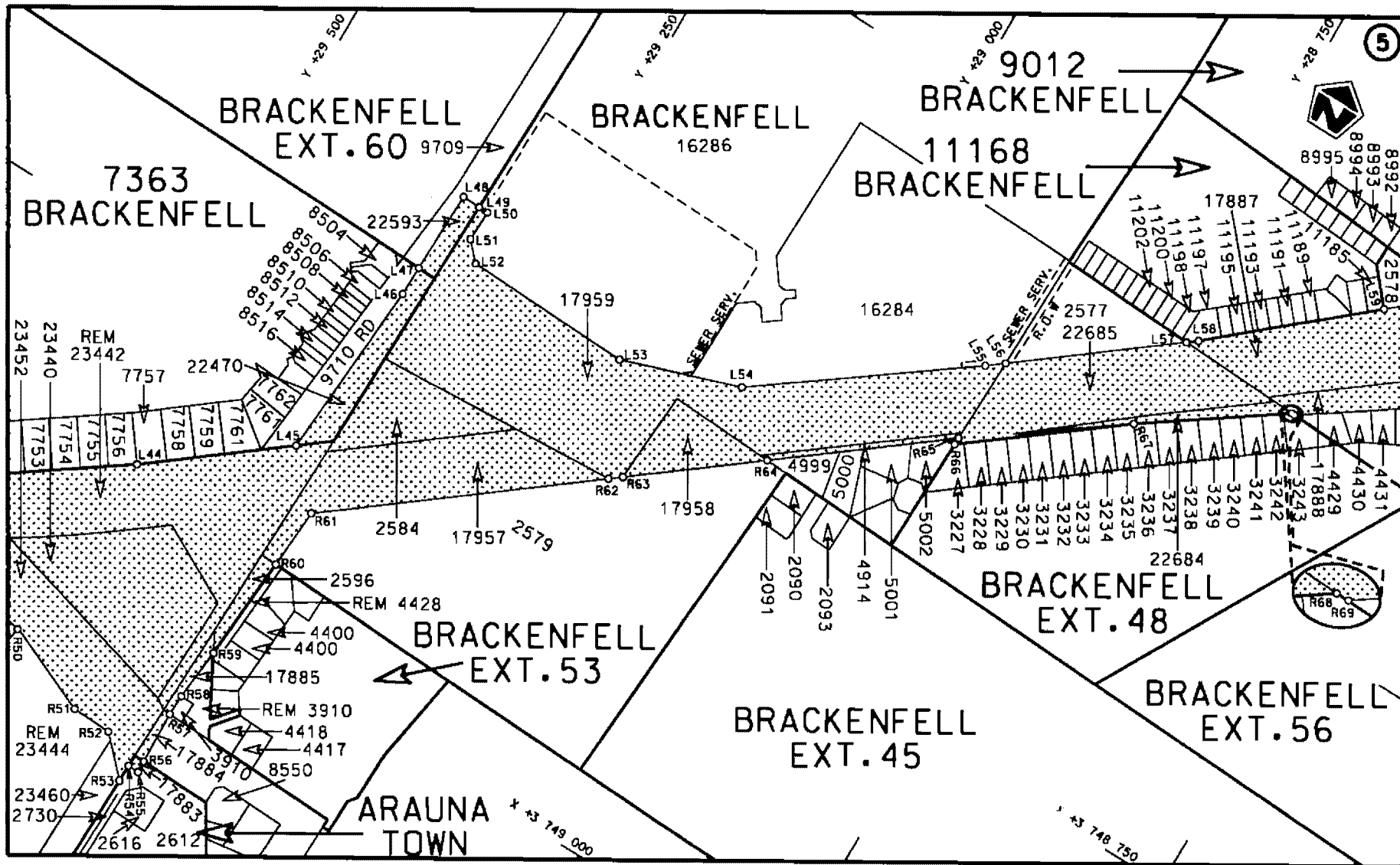
VERKLARING WYSIGING VAN NASIONALE PAD N1 SEKSIE 1

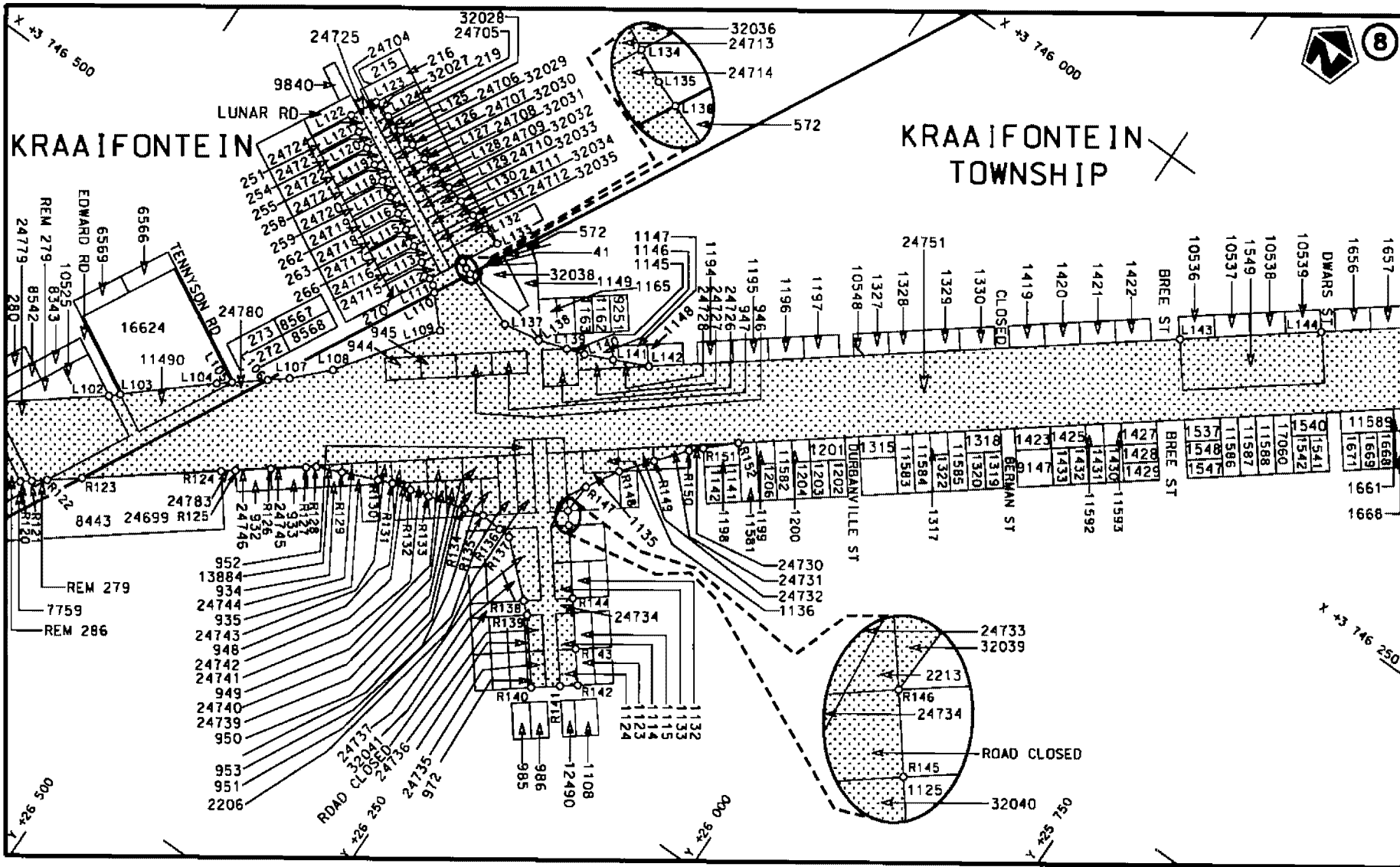
WYSIGING VAN VERKLARING NO. 337 VAN 2018.

Kragtens Artikel 40(1)(b) van die Wet op die Suid-Afrikaanse Nasionale Padagentskap Beperk en op Nasionale Paaie, 1998 (Wet no. 7 van 1998), wysig ek hiermee Verklaring No. 337 van 2018 deur velle 5, 8, 11, 17, 27, 28, 29, 32, 33, 34, 35, 36 en 37 te vervang met bygaande velle 5A, 8A, 11A, 17A, 27A, 28A, 29A, 32A, 33A, 34A, 35A, 36A en 37A van Plan No. P958/17.

(Nasionale Pad N1 Seksie 1: Old Oak Wisselaar – Kliprivier)

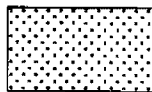
MINISTER VAN VERVOER





Die Suid Afrikaanse Nasionale Padagentskap MSB Bpk
 The South African National Roads Agency SOC Ltd

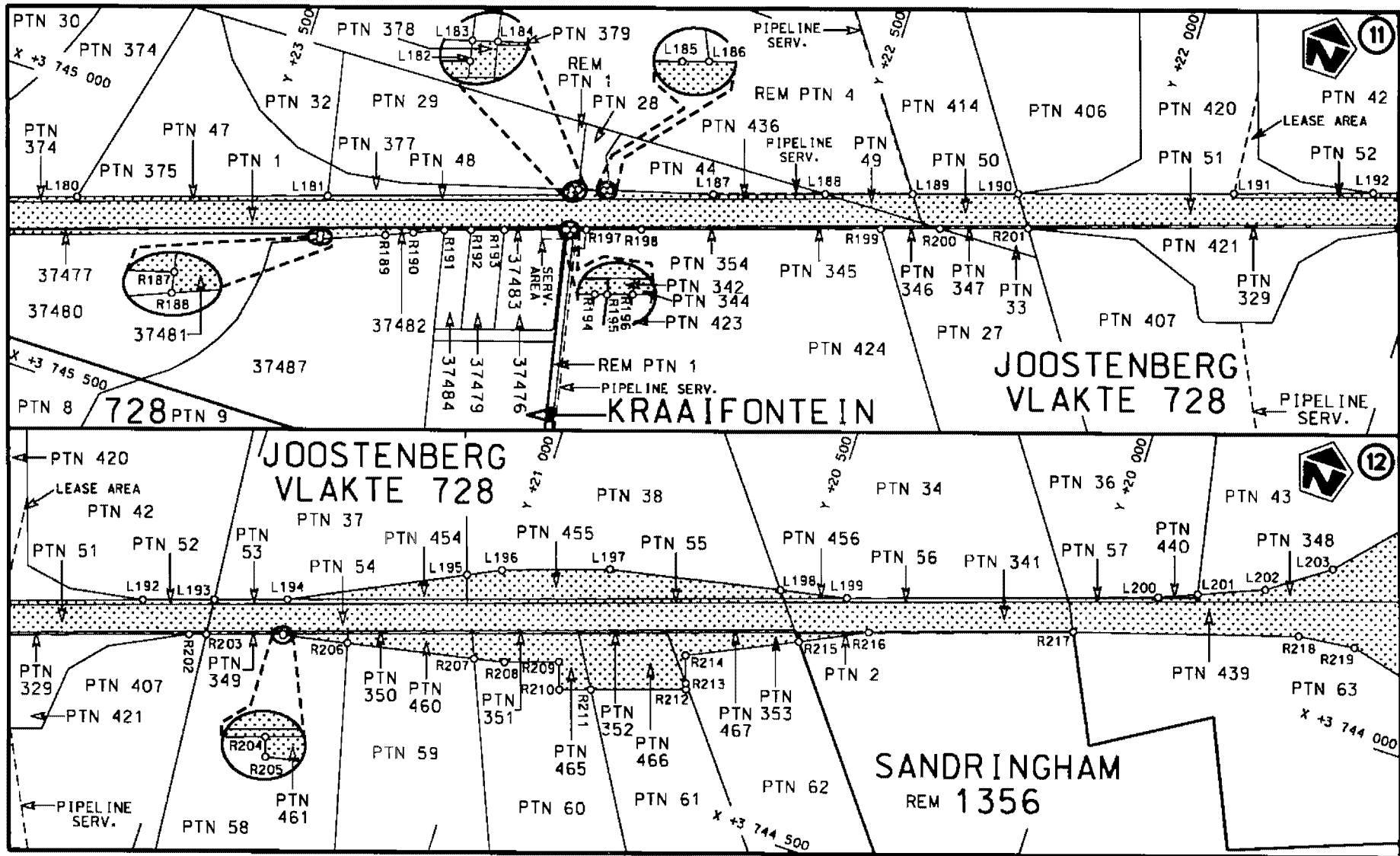
Die figuur getoon
 The figure shown

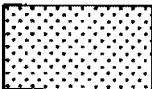


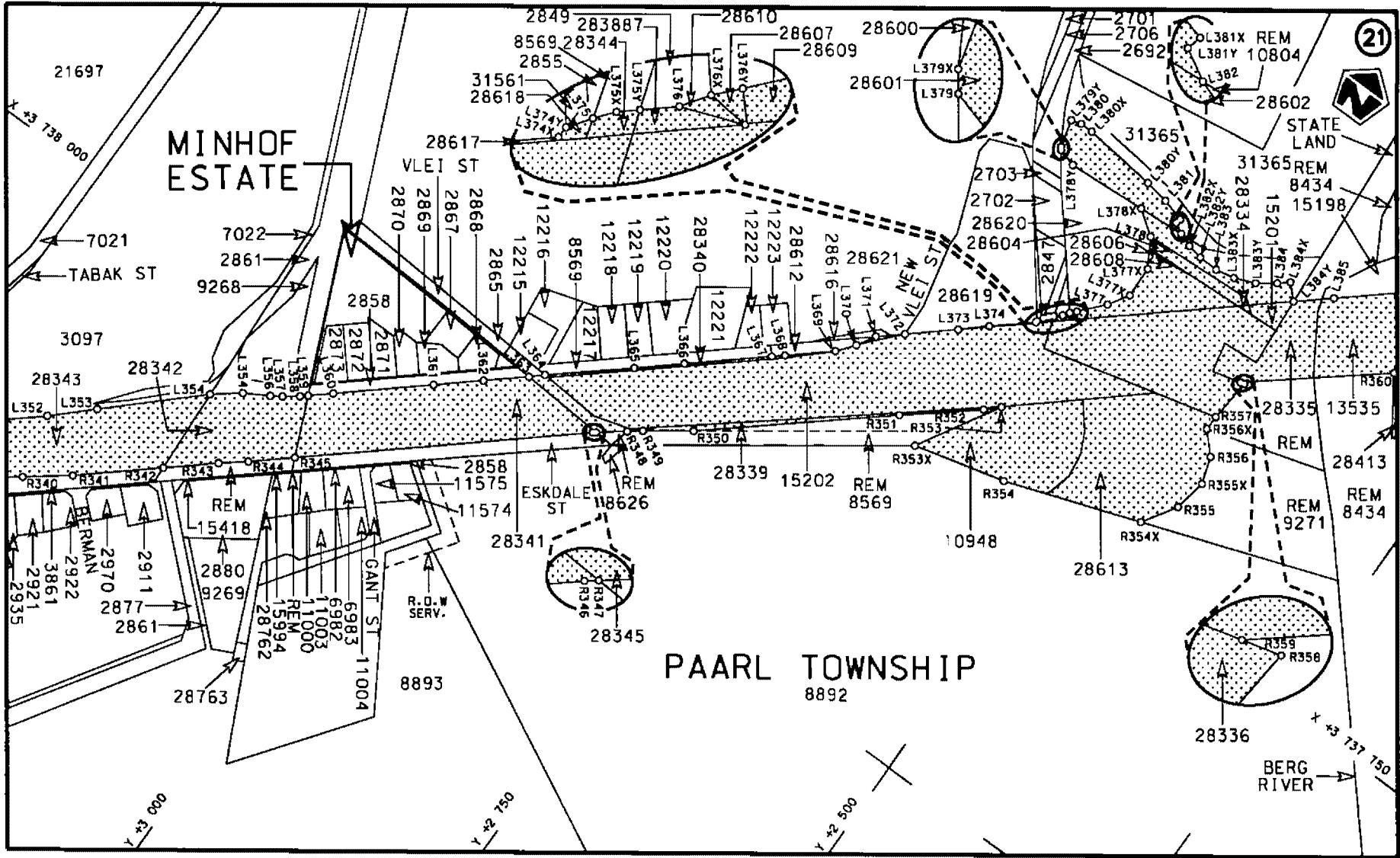
steldie padreserwe voor van 'n gedeelte
 represents the road reserve of a portion
 van Nasionale Roete
 of National Route

N1 Seksie 1
 Section

Vel
 Sheet 8A van 37
 of
 Plan P958/17

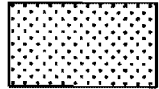


<p>Die Suid Afrikaanse Nasionale Padagentskap MSB Bpk</p>	<p>Die figuur getoon</p>		<p>Vel Sheet 11A van 37</p>
<p>The South African National Roads Agency SOC Ltd</p>	<p>The figure shown</p>	<p>stel die padreserwe voor van 'n gedeelte represents the road reserve of a portion van Nasionale Roete N1 Sektie of National Route N1 Sektie Section 1</p>	<p>Plan P958/17</p>



STAATSKOERANT, 24 MEI 2019

<p>Die Suid Afrikaanse Nasionale Padagentskap MSB Bpk</p>	<p>Die figuur getoon</p>	<p>steldie padreserve voor van 'n gedeelte</p>	<p>Vel Sheet 17A van 37</p>
<p>The South African National Roads Agency SOC Ltd</p>	<p>The figure shown</p>	<p>represents the road reserve of a portion</p>	<p>Plan P958/17</p>
		<p>van Nasionale Roete of National Route</p>	<p>Seksie Section 1</p>



PADRESERWE KOÖRDINATE / ROAD RESERVE CO-ORDINATES									
LINKERKANT/LEFT HAND SIDE					REGTERKANT/RIGHT HAND SIDE				
	Y	X	WG 19°		Y	X			
L52	29 296.64	3 748 609.92		R52	29 365.47	3 749 126.72			
L53	29 144.99	3 748 613.61		R53	29 334.96	3 749 157.96			
L54	29 040.14	3 748 577.18		R54	29 334.69	3 749 142.85			
L55	28 865.49	3 748 447.73		R55	29 324.83	3 749 143.14			
L56	28 851.25	3 748 436.57		R56	29 325.18	3 749 132.36			
L57	28 723.79	3 748 336.48		R57	29 326.72	3 749 085.22			
L58	28 715.18	3 748 329.71		R58	29 326.17	3 749 066.40			
L59	28 589.02	3 748 219.95		R59	29 321.30	3 749 019.61			
L60	28 540.14	3 748 177.75		R60	29 313.75	3 748 925.02			
L61	28 551.08	3 748 176.99		R61	29 309.79	3 748 870.73			
L62	28 461.89	3 748 070.82		R62	29 100.09	3 748 706.79			
L63	28 425.31	3 748 019.58		R63	29 090.05	3 748 698.94			
L64	28 376.43	3 748 002.49		R64	28 988.29	3 748 619.39			
L65	28 311.21	3 747 929.73		R65	28 853.39	3 748 513.64			
L66	28 292.21	3 747 897.73		R66	28 853.60	3 748 520.30			
L67	28 289.21	3 747 861.72		R67	28 727.13	3 748 421.48			
L68	28 297.22	3 747 797.73		R68	28 612.33	3 748 339.86			
L69	28 198.95	3 747 751.09		R69	28 609.55	3 748 339.95			
L70	28 171.22	3 747 809.70		R70	28 529.24	3 748 283.71			
L71	28 149.21	3 747 819.74		R71	28 400.17	3 748 203.62			
L72	28 030.25	3 747 752.34		R72	28 409.24	3 748 219.84			
L73	28 008.12	3 747 739.80		R73	28 373.22	3 748 203.74			
L74	27 942.92	3 747 704.64		R74	28 354.35	3 748 197.33			
L75	27 904.97	3 747 684.37		R75	28 261.21	3 748 165.72			
L76	27 900.30	3 747 681.88		R76	28 194.21	3 748 147.72			
L77	27 866.13	3 747 648.63		R77	28 164.21	3 748 159.72			
L78	27 847.84	3 747 618.52		R78	28 050.16	3 748 090.61			
L79	27 824.06	3 747 628.62		R79	28 083.22	3 748 003.72			
L80	27 409.89	3 747 304.52		R80	28 080.22	3 747 988.71			
L81	27 382.73	3 747 283.31		R81	28 020.23	3 747 916.71			
L82	27 374.62	3 747 276.92		R82	27 908.23	3 747 805.71			
L83	27 365.95	3 747 270.08		R83	27 899.35	3 747 797.43			
L84	27 320.52	3 747 234.30		R84	27 887.37	3 747 787.10			
L85	27 312.49	3 747 227.96		R85	27 864.46	3 747 765.54			
L86	27 292.12	3 747 211.94		R86	27 857.18	3 747 758.69			
L87	27 258.26	3 747 185.49		R87	27 832.95	3 747 735.88			
L88	27 247.39	3 747 176.92		R88	27 808.70	3 747 713.08			
L89	27 207.41	3 747 145.42		R89	27 801.41	3 747 706.24			
L90	27 182.86	3 747 126.07		R90	27 782.14	3 747 688.15			
L91	27 101.83	3 747 062.21		R91	27 769.03	3 747 675.85			
L92	27 093.37	3 747 055.54		R92	27 752.86	3 747 660.66			
L93	27 011.63	3 746 991.95		R93	27 744.75	3 747 654.32			
L94	27 004.16	3 746 985.62		R94	27 494.91	3 747 458.99			
L95	26 913.36	3 746 915.73		R95	27 445.99	3 747 420.78			
L96	26 831.96	3 746 852.03		R96	27 378.26	3 747 367.66			
L97	26 824.28	3 746 845.94		R97	27 370.11	3 747 361.18			
L98	26 819.79	3 746 842.66		R98	27 343.00	3 747 339.96			
L99	26 742.90	3 746 782.33		R99	27 316.06	3 747 318.72			
L100	26 734.81	3 746 775.95		R100	27 307.83	3 747 312.34			
L101	26 731.02	3 746 772.84		R101	27 253.58	3 747 269.94			
L102	26 653.60	3 746 712.16		R102	27 245.31	3 747 263.52			

Vel
Sheet 27A Van
of 37

P958/17

PADRESERWE KOÖRDINATE / ROAD RESERVE CO-ORDINATES						
LINKERKANT/LEFT HAND SIDE				REGTERKANT/RIGHT HAND SIDE		
	Y	X	WG 19°		Y	X
L103	26 646.16	3 746 705.31		R103	27 229.02	3 747 250.78
L104	26 581.62	3 746 648.58		R104	27 191.18	3 747 221.12
L105	26 571.07	3 746 640.22		R105	27 179.76	3 747 212.85
L106	26 546.18	3 746 620.03		R106	27 147.91	3 747 187.53
L107	26 531.06	3 746 607.81		R107	27 123.18	3 747 168.46
L108	26 503.61	3 746 579.82		R108	27 115.05	3 747 162.09
L109	26 445.13	3 746 497.56		R109	27 087.00	3 747 140.03
L110	26 468.17	3 746 473.21		R110	27 056.54	3 747 116.27
L111	26 472.76	3 746 468.53		R111	27 033.67	3 747 098.42
L112	26 478.33	3 746 465.45		R112	27 025.17	3 747 091.81
L113	26 492.11	3 746 457.84		R113	26 989.17	3 747 063.24
L114	26 505.89	3 746 450.22		R114	26 945.35	3 747 029.09
L115	26 519.67	3 746 442.60		R115	26 943.91	3 747 027.97
L116	26 533.45	3 746 434.98		R116	26 936.65	3 747 021.55
L117	26 547.23	3 746 427.36		R117	26 855.01	3 746 957.98
L118	26 560.99	3 746 419.76		R118	26 846.80	3 746 951.53
L119	26 574.79	3 746 412.13		R119	26 765.47	3 746 887.64
L120	26 588.50	3 746 404.38		R120	26 676.47	3 746 817.66
L121	26 602.22	3 746 396.64		R121	26 668.36	3 746 811.29
L122	26 615.92	3 746 388.90		R122	26 657.66	3 746 802.87
L123	26 604.21	3 746 366.89		R123	26 633.20	3 746 783.65
L124	26 588.47	3 746 370.79		R124	26 535.62	3 746 708.15
L125	26 572.71	3 746 374.70		R125	26 525.75	3 746 700.33
L126	26 556.96	3 746 378.61		R126	26 500.80	3 746 681.13
L127	26 541.20	3 746 382.51		R127	26 475.77	3 746 662.03
L128	26 525.45	3 746 386.41		R128	26 468.53	3 746 656.40
L129	26 509.69	3 746 390.32		R129	26 447.33	3 746 647.28
L130	26 493.94	3 746 394.23		R130	26 417.25	3 746 634.54
L131	26 478.18	3 746 398.13		R131	26 405.22	3 746 629.45
L132	26 462.43	3 746 402.04		R132	26 389.03	3 746 624.74
L133	26 446.57	3 746 405.97		R133	26 372.75	3 746 620.02
L134	26 462.93	3 746 436.50		R134	26 340.19	3 746 610.55
L135	26 456.66	3 746 439.60		R135	26 323.81	3 746 605.79
L136	26 451.31	3 746 441.53		R136	26 305.12	3 746 607.14
L137	26 401.03	3 746 459.87		R137	26 294.28	3 746 607.93
L138	26 368.85	3 746 453.79		R138	26 252.27	3 746 645.78
L139	26 344.14	3 746 445.75		R139	26 242.77	3 746 654.34
L140	26 328.60	3 746 440.60		R140	26 204.01	3 746 703.97
L141	26 305.24	3 746 429.88		R141	26 183.71	3 746 688.23
L142	26 275.90	3 746 416.43		R142	26 171.34	3 746 678.65
L143	25 903.70	3 746 125.89		R143	26 190.73	3 746 653.74
L144	25 804.74	3 746 048.51		R144	26 217.80	3 746 618.96
L145	25 526.42	3 745 831.25		R145	26 256.58	3 746 569.16
L146	25 436.58	3 745 772.55		R146	26 264.32	3 746 559.21
L147	25 422.54	3 745 764.03		R147	26 263.09	3 746 533.37
L148	25 409.49	3 745 756.08		R148	26 246.47	3 746 505.40
L149	25 392.93	3 745 746.02		R149	26 226.20	3 746 480.19
L150	25 381.70	3 745 739.19		R150	26 205.87	3 746 455.03
L151	25 368.19	3 745 730.33		R151	26 196.69	3 746 446.31
L152	25 339.73	3 745 715.13		R152	26 173.75	3 746 424.52
L153	25 317.17	3 745 703.09		R153	25 543.55	3 745 932.42

Vel 28A Van 37
Sheet of

P958/17

PADRESERWE KOÖRDINATE / ROAD RESERVE CO-ORDINATES						
LINKERKANT/LEFT HAND SIDE			REGTERKANT/RIGHT HAND SIDE			
	Y	X	WG 19°		Y	X
L154	25 260.04	3 745 676.61		R154	25 417.65	3 745 848.08
L155	25 195.09	3 745 649.41		R155	25 362.67	3 745 812.44
L156	25 126.67	3 745 624.46		R156	25 347.86	3 745 808.70
L157	25 074.40	3 745 606.92		R157	25 308.40	3 745 787.62
L158	24 804.27	3 745 516.25		R158	25 282.05	3 745 773.57
L159	24 746.94	3 745 493.80		R159	25 228.28	3 745 748.65
L160	24 687.84	3 745 461.23		R160	25 170.07	3 745 724.28
L161	24 648.86	3 745 425.56		R161	25 100.65	3 745 698.76
L162	24 638.74	3 745 415.41		R162	25 033.82	3 745 676.33
L163	24 626.77	3 745 403.31		R163	24 886.39	3 745 626.84
L164	24 582.78	3 745 336.37		R164	24 759.21	3 745 584.16
L165	24 539.79	3 745 268.97		R165	24 738.78	3 745 580.61
L166	24 492.87	3 745 239.90		R166	24 659.28	3 745 588.53
L167	24 494.17	3 745 213.55		R167	24 641.13	3 745 595.65
L168	24 478.46	3 745 208.89		R168	24 581.82	3 745 618.95
L169	24 475.12	3 745 207.91		R169	24 549.81	3 745 636.80
L170	24 462.08	3 745 237.79		R170	24 512.73	3 745 657.47
L171	24 429.16	3 745 255.07		R171	24 492.83	3 745 668.56
L172	24 390.98	3 745 275.11		R172	24 490.58	3 745 668.44
L173	24 380.76	3 745 278.15		R173	24 478.29	3 745 668.30
L174	24 346.55	3 745 288.32		R174	24 448.29	3 745 667.82
L175	24 284.37	3 745 306.81		R175	24 396.26	3 745 642.28
L176	24 274.09	3 745 309.86		R176	24 324.28	3 745 512.60
L177	24 212.91	3 745 311.69		R177	24 289.73	3 745 464.06
L178	24 146.85	3 745 295.56		R178	24 280.60	3 745 451.36
L179	24 134.09	3 745 298.04		R179	24 275.28	3 745 443.78
L180	23 806.62	3 745 187.42		R180	24 266.77	3 745 436.93
L181	23 383.97	3 745 044.91		R181	24 237.78	3 745 413.60
L182	22 973.49	3 744 906.51		R182	24 200.78	3 745 392.80
L183	22 975.47	3 744 896.78		R183	24 170.57	3 745 382.27
L184	22 963.39	3 744 893.25		R184	24 155.56	3 745 375.81
L185	22 920.41	3 744 880.60		R185	24 146.69	3 745 370.61
L186	22 909.32	3 744 876.88		R186	23 950.11	3 745 304.36
L187	22 733.33	3 744 825.53		R187	23 376.02	3 745 111.07
L188	22 543.97	3 744 761.78		R188	23 374.03	3 745 120.78
L189	22 396.25	3 744 712.14		R189	23 265.51	3 745 077.22
L190	22 218.12	3 744 652.28		R190	23 219.60	3 745 057.56
L191	21 853.29	3 744 530.01		R191	23 168.53	3 745 035.69
L192	21 618.49	3 744 449.88		R192	23 123.48	3 745 020.59
L193	21 498.16	3 744 409.40		R193	23 067.09	3 745 001.58
L194	21 374.38	3 744 367.77		R194	22 965.01	3 744 967.07
L195	21 083.96	3 744 226.06		R195	22 961.44	3 744 965.96
L196	21 027.62	3 744 198.57		R196	22 949.53	3 744 961.94
L197	20 845.30	3 744 136.19		R197	22 928.69	3 744 954.91
L198	20 546.59	3 744 073.99		R198	22 835.93	3 744 923.63
L199	20 429.91	3 744 049.69		R199	22 431.46	3 744 787.25
L200	19 903.96	3 743 871.89		R200	22 331.60	3 744 753.57
L201	19 838.65	3 743 844.70		R201	22 182.69	3 744 703.36
L202	19 727.11	3 743 798.78		R202	21 521.71	3 744 480.44
L203	19 623.71	3 743 727.12		R203	21 493.09	3 744 470.78
L204	19 514.32	3 743 608.36		R204	21 363.32	3 744 426.99

Vel
Sheet29A Van
of 37

P958/17

PADRESERWE KOÖRDINATE / ROAD RESERVE CO-ORDINATES

LINKERKANT/LEFT HAND SIDE				REGTERKANT/RIGHT HAND SIDE			
	Y	X	WG 19°		Y	X	
L307	5 198.02	3 739 668.50		R307	4 816.64	3 739 556.62	
L308	5 190.07	3 739 665.51		R308	4 722.35	3 739 496.98	
L309	5 171.46	3 739 658.50		R309	4 602.51	3 739 411.64	
L310	5 107.90	3 739 634.56		R310	4 531.70	3 739 353.78	
L311	5 011.84	3 739 591.34		R311	4 517.30	3 739 341.96	
L312	4 926.67	3 739 550.43		R312	4 514.49	3 739 332.41	
L313	4 867.37	3 739 508.94		R313	4 492.56	3 739 316.08	
L314	4 753.06	3 739 428.96		R314	4 373.02	3 739 217.78	
L315	4 666.69	3 739 360.81		R315	4 333.57	3 739 192.51	
L316	4 575.17	3 739 289.53		R316	4 291.40	3 739 176.09	
L317	4 569.86	3 739 279.35		R317	4 245.91	3 739 169.87	
L318	4 530.25	3 739 263.51		R318	4 151.72	3 739 165.64	
L319	4 211.43	3 738 984.71		R319	4 125.72	3 739 175.23	
L320	4 095.60	3 738 870.74		R320	4 129.95	3 739 185.58	
L321	4 072.34	3 738 844.24		R321	4 177.93	3 739 277.69	
L322	4 053.07	3 738 814.45		R322	4 136.49	3 739 297.29	
L323	4 017.62	3 738 748.07		R323	4 118.39	3 739 263.58	
L324	3 998.17	3 738 711.96		R324	4 053.56	3 739 140.52	
L325	3 992.16	3 738 702.59		R325	4 044.67	3 739 123.64	
L326	3 949.60	3 738 675.51		R326	3 966.26	3 738 969.96	
L327	3 943.12	3 738 672.36		R327	3 957.65	3 738 952.02	
L328	3 913.65	3 738 657.93		R328	3 947.26	3 738 928.27	
L329	3 903.65	3 738 653.02		R329	3 936.55	3 738 900.05	
L330	3 891.74	3 738 647.26		R330	3 928.43	3 738 875.01	
L331	3 839.06	3 738 473.90		R331	3 907.48	3 738 797.81	
L332	3 822.93	3 738 488.06		R332	3 844.35	3 738 742.73	
L333	3 826.71	3 738 509.65		R333	3 583.26	3 738 513.58	
L334	3 859.33	3 738 622.39		R334	3 556.97	3 738 490.80	
L335	3 848.28	3 738 626.19		R335	3 450.83	3 738 399.94	
L336	3 826.58	3 738 637.04		R336	3 435.00	3 738 386.39	
L337	3 804.54	3 738 626.94		R337	3 386.37	3 738 344.76	
L338	3 797.73	3 738 623.88		R338	3 352.54	3 738 315.33	
L339	3 779.74	3 738 612.23		R339	3 318.49	3 738 285.84	
L340	3 775.88	3 738 609.83		R340	3 271.47	3 738 250.08	
L341	3 760.58	3 738 596.84		R341	3 235.95	3 738 222.61	
L342	3 754.55	3 738 599.40		R342	3 174.65	3 738 169.67	
L343	3 736.21	3 738 584.88		R343	3 137.38	3 738 137.49	
L344	3 712.97	3 738 565.99		R344	3 116.82	3 738 120.78	
L345	3 657.26	3 738 519.76		R345	3 085.23	3 738 093.51	
L346	3 642.08	3 738 506.73		R346	2 883.45	3 737 919.32	
L347	3 623.63	3 738 490.90		R347	2 880.92	3 737 917.34	
L348	3 447.02	3 738 337.76		R348	2 859.07	3 737 900.34	
L349	3 434.92	3 738 326.69		R349	2 847.94	3 737 891.68	
L350	3 418.81	3 738 311.96		R350	2 811.75	3 737 865.04	
L351	3 387.28	3 738 283.12		R351	2 671.43	3 737 745.56	
L352	3 284.40	3 738 194.22		R352	2 613.63	3 737 697.39	
L353	3 251.85	3 738 163.22		R353	2 602.11	3 737 686.27	
L354	3 178.09	3 738 093.81		R353X	2 644.92	3 737 758.76	
L355	3 155.24	3 738 075.79		R354	2 563.17	3 737 736.90	
L356	3 133.92	3 738 063.28		R354X	2 443.59	3 737 693.44	
L357	3 124.82	3 738 057.15		R355	2 424.60	3 737 663.30	

Vel
Sheet32A Van
of 37

P958/17

PADRESERWE KOÖRDINATE / ROAD RESERVE CO-ORDINATES						
LINKERKANT/LEFT HAND SIDE				REGTERKANT/RIGHT HAND SIDE		
	Y	X	WG 19°		Y	X
L358	3 112.45	3 738 047.99		R355X	2 419.00	3 737 634.50
L359	3 106.86	3 738 043.16		R356	2 426.40	3 737 611.00
L360	3 089.86	3 738 028.51		R356X	2 443.26	3 737 593.53
L361	3 022.00	3 737 969.74		R357	2 442.70	3 737 580.37
L362	2 988.10	3 737 940.33		R358	2 438.80	3 737 542.12
L363	2 957.29	3 737 913.77		R359	2 442.37	3 737 543.08
L364	2 946.79	3 737 904.05		R360	2 336.66	3 737 455.65
L365	2 885.88	3 737 852.20		R361	2 327.22	3 737 447.48
L366	2 851.91	3 737 822.81		R362	2 322.46	3 737 443.60
L367	2 792.90	3 737 771.85		R363	1 903.39	3 737 081.03
L368	2 783.89	3 737 764.07		R364	1 888.94	3 737 068.54
L369	2 749.87	3 737 734.55		R365	1 829.88	3 737 017.48
L370	2 737.65	3 737 719.38		R366	1 786.71	3 736 980.17
L371	2 728.00	3 737 703.21		R367	1 770.64	3 736 968.85
L372	2 708.29	3 737 686.00		R368	1 698.72	3 736 918.27
L373	2 672.33	3 737 654.89		R369	1 650.43	3 736 897.42
L374	2 651.56	3 737 636.01		R370	1 645.04	3 736 888.98
L374X	2 620.04	3 737 608.80		R371	1 571.95	3 736 864.70
L374Y	2 619.93	3 737 607.39		R372	1 553.69	3 736 882.14
L375	2 616.61	3 737 601.80		R373	1 544.87	3 736 897.31
L375X	2 613.61	3 737 598.05		R374	1 518.89	3 736 950.02
L375Y	2 610.08	3 737 594.98		R375	1 504.56	3 736 991.35
L376	2 604.17	3 737 589.86		R376	1 503.86	3 736 993.73
L376X	2 600.38	3 737 584.37		R377	1 493.84	3 737 027.64
L376Y	2 596.11	3 737 579.67		R378	1 490.25	3 737 067.26
L377	2 577.39	3 737 558.53		R379	1 484.74	3 737 068.23
L377X	2 566.10	3 737 540.27		R380	1 459.44	3 737 073.35
L377Y	2 566.68	3 737 512.20		R381	1 460.01	3 737 029.31
L378	2 581.02	3 737 487.85		R382	1 465.94	3 736 996.79
L378X	2 601.84	3 737 473.16		R383	1 468.84	3 736 980.89
L378Y	2 673.25	3 737 478.17		R384	1 478.80	3 736 953.52
L379	2 689.39	3 737 474.06		R385	1 487.90	3 736 928.29
L379X	2 691.01	3 737 471.85		R386	1 500.79	3 736 898.41
L379Y	2 697.10	3 737 447.65		R387	1 521.50	3 736 875.89
L380	2 688.17	3 737 445.06		R388	1 486.22	3 736 869.62
L380X	2 676.67	3 737 445.11		R389	1 484.31	3 736 806.04
L380Y	2 610.17	3 737 451.47		R390	1 480.31	3 736 754.21
L381	2 588.57	3 737 454.87		R391	1 467.60	3 736 736.74
L381X	2 568.44	3 737 460.08		R392	1 439.71	3 736 699.34
L381Y	2 569.68	3 737 464.69		R393	1 389.16	3 736 643.77
L382	2 560.34	3 737 469.85		R394	1 250.05	3 736 506.25
L382X	2 548.31	3 737 473.89		R395	880.11	3 736 186.51
L382Y	2 534.60	3 737 476.44		R396	816.16	3 736 131.23
L383	2 517.15	3 737 476.56		R397	467.55	3 735 828.89
L383X	2 499.84	3 737 473.20		R398	360.99	3 735 737.28
L383Y	2 481.66	3 737 465.47		R399	340.57	3 735 723.63
L384	2 467.18	3 737 455.25		R400	327.84	3 735 712.84
L384X	2 457.03	3 737 446.43		R401	321.71	3 735 702.85
L384Y	2 445.02	3 737 458.29		R402	-2.58	3 735 423.26
L385	2 417.73	3 737 434.63		R403	-77.79	3 735 357.10
L386	1 850.75	3 736 944.74		R404	-95.49	3 735 341.41

Vel
Sheet33A Van
of 37

P958/17

PADRESERWE KOÖRDINATE / ROAD RESERVE CO-ORDINATES						
LINKERKANT/LEFT HAND SIDE				REGTERKANT/RIGHT HAND SIDE		
	Y	X	WG 19°		Y	X
L387	1 841.23	3 736 936.52		R405	-172.90	3 735 280.45
L388	1 840.22	3 736 913.59		R406	-253.37	3 735 225.29
L389	1 755.49	3 736 831.49		R407	-317.02	3 735 188.01
L390	1 705.26	3 736 765.21		R408	-511.58	3 735 099.32
L391	1 678.56	3 736 725.17		R409	-529.68	3 735 092.22
L392	1 669.19	3 736 694.24		R410	-657.88	3 735 050.82
L393	1 684.13	3 736 668.38		R411	-788.87	3 735 020.82
L394	1 744.38	3 736 567.21		R412	-855.97	3 735 011.71
L395	1 755.94	3 736 554.57		R413	-989.37	3 735 002.51
L396	1 740.40	3 736 545.05		R414	-1 060.08	3 735 004.73
L397	1 720.11	3 736 534.61		R415	-1 124.17	3 735 006.73
L398	1 698.76	3 736 570.74		R416	-1 185.87	3 735 019.93
L399	1 656.60	3 736 644.70		R417	-1 243.77	3 735 044.23
L400	1 637.73	3 736 673.23		R418	-1 248.87	3 735 048.13
L401	1 616.13	3 736 679.71		R419	-1 163.48	3 735 195.13
L402	1 477.07	3 736 603.22		R420	-1 242.58	3 735 232.93
L403	1 402.87	3 736 546.18		R421	-1 409.27	3 735 250.32
L404	1 213.25	3 736 390.88		R422	-1 419.94	3 735 132.21
L405	1 187.97	3 736 370.14		R423	-1 420.40	3 735 127.19
L406	1 016.23	3 736 224.86		R424	-1 423.77	3 735 092.83
L407	924.95	3 736 146.19		R425	-1 447.37	3 735 091.47
L408	776.57	3 736 017.82		R426	-1 583.54	3 735 115.50
L409	762.32	3 736 005.48		R427	-1 898.49	3 735 208.02
L410	619.38	3 735 881.86		R428	-2 136.52	3 735 277.87
L411	470.46	3 735 753.11		R429	-2 223.90	3 735 295.15
L412	407.60	3 735 698.70		R430	-2 238.67	3 735 298.05
L413	389.94	3 735 682.57		R431	-2 253.09	3 735 300.53
L414	380.11	3 735 674.13		R432	-2 264.21	3 735 302.28
L415	367.51	3 735 664.64		R433	-2 475.78	3 735 335.62
L416	36.57	3 735 377.97		R434	-2 599.38	3 735 344.74
L417	-9.76	3 735 336.57		R435	-2 748.68	3 735 329.58
L418	-54.08	3 735 297.01		R436	-2 764.30	3 735 328.36
L419	-139.73	3 735 231.18		R437	-2 805.13	3 735 313.44
L420	-223.24	3 735 174.18		R438	-2 918.68	3 735 275.21
L421	-330.53	3 735 110.61		R439	-2 995.60	3 735 253.16
L422	-441.08	3 735 057.32		R440	-3 103.93	3 735 238.81
L423	-626.87	3 734 985.42		R441	-3 118.44	3 735 236.88
L424	-753.97	3 734 947.52		R442	-3 282.92	3 735 215.10
L425	-891.67	3 734 920.71		R443	-3 288.52	3 735 214.35
L426	-889.87	3 734 915.21		R444	-3 438.81	3 735 189.45
L427	-974.91	3 734 895.78		R445	-3 521.58	3 735 175.73
L428	-1 265.40	3 734 829.21		R446	-3 580.55	3 735 166.09
L429	-1 266.19	3 734 793.98		R447	-3 684.76	3 735 168.45
L430	-1 268.43	3 734 723.29		R448	-3 731.37	3 735 171.01
L431	-1 481.33	3 734 727.77		R449	-3 876.07	3 735 184.30
L432	-1 482.01	3 734 725.94		R450	-3 993.53	3 735 202.46
L433	-1 512.14	3 734 732.85		R451	-4 090.28	3 735 229.83
L434	-1 518.11	3 734 734.20		R452	-4 150.05	3 735 235.08
L435	-1 606.00	3 734 731.12		R453	-4 640.42	3 735 333.22
L436	-1 606.54	3 734 838.52		R454	-4 878.05	3 735 367.46
L437	-1 606.57	3 734 844.77		R455	-5 052.21	3 735 417.10

Vel
Sheet34A Van
of 37

P958/17

PADRESERWE KOÖRDINATE / ROAD RESERVE CO-ORDINATES											
LINKERKANT/LEFT HAND SIDE					REGTERKANT/RIGHT HAND SIDE						
	Y		X	WG 19°		Y		X			
L438	-1	606.70	3	734	875.07	R456	-5	072.83	3	735	412.65
L439	-1	606.92	3	734	925.35	R457	-5	078.94	3	735	413.68
L440	-1	691.50	3	735	019.50	R458	-5	310.04	3	735	452.43
L441	-2	164.50	3	735	167.61	R459	-5	360.45	3	735	458.03
L442	-2	228.63	3	735	190.99	R460	-5	451.52	3	735	468.19
L443	-2	250.16	3	735	198.84	R461	-5	555.77	3	735	466.04
L444	-2	264.31	3	735	204.02	R462	-5	598.22	3	735	465.05
L445	-2	368.85	3	735	242.29	R463	-5	713.02	3	735	490.14
L446	-2	500.85	3	735	255.08	R464	-5	854.75	3	735	473.97
L447	-2	552.96	3	735	250.79	R465	-5	904.99	3	735	420.60
L448	-2	595.18	3	735	247.31	R466	-6	021.87	3	735	244.13
L449	-2	639.64	3	735	243.65	R467	-6	029.75	3	735	232.13
L450	-2	707.50	3	735	238.04	R468	-6	186.49	3	735	056.57
L451	-2	810.25	3	735	212.16	R469	-6	277.45	3	734	944.28
L452	-3	011.07	3	735	161.84	R470	-6	287.72	3	734	857.25
L453	-3	101.01	3	735	139.27	R471	-6	289.84	3	734	839.76
L454	-3	175.47	3	735	120.64	R472	-6	269.52	3	734	786.25
L455	-3	191.02	3	735	116.73	R473	-6	344.97	3	734	672.46
L456	-3	292.47	3	735	098.87	R474	-6	369.15	3	734	604.39
L457	-3	451.05	3	735	088.73	R475	-6	385.15	3	734	559.33
L458	-3	620.83	3	735	077.99	R476	-6	519.04	3	734	429.34
L459	-3	764.73	3	735	083.05	R477	-6	526.22	3	734	422.37
L460	-3	904.45	3	735	096.97	R478	-6	675.10	3	734	299.88
L461	-4	082.67	3	735	114.74	R479	-6	889.09	3	734	186.11
L462	-4	090.11	3	735	115.63	R480	-7	150.93	3	734	046.90
L463	-4	244.26	3	735	161.54	R481	-7	329.55	3	733	981.11
L464	-4	559.46	3	735	216.98	R482	-7	514.68	3	733	952.35
L465	-4	600.25	3	735	217.16	R483	-7	729.72	3	733	932.25
L466	-4	697.22	3	735	241.35	R484	-7	801.02	3	733	940.48
L467	-5	039.89	3	735	301.44	R485	-7	973.22	3	733	960.34
L468	-5	294.79	3	735	345.67	R486	-8	123.42	3	733	981.15
L469	-5	334.89	3	735	349.00	R487	-8	130.01	3	733	982.06
L470	-5	467.72	3	735	328.30	R488	-8	324.83	3	734	009.06
L471	-5	515.47	3	735	326.57	R489	-9	468.88	3	734	167.53
L472	-5	568.73	3	735	324.72	R490	-9	847.96	3	734	220.02
L473	-5	576.56	3	735	321.35	R491	-10	095.86	3	734	217.00
L474	-5	752.14	3	735	245.69	R492	-10	111.57	3	734	216.81
L475	-5	910.72	3	735	180.06	R493	-10	211.84	3	734	202.12
L476	-5	978.81	3	735	124.29	R494	-10	355.81	3	734	180.27
L477	-6	062.87	3	734	954.80	R495	-10	502.33	3	734	135.41
L478	-6	119.41	3	734	804.60	R496	-10	507.83	3	734	152.01
L479	-6	092.91	3	734	733.30	R497	-10	580.71	3	734	108.91
L480	-6	089.61	3	734	724.42	R498	-10	632.70	3	734	083.01
L481	-6	254.61	3	734	570.93	R499	-10	673.47	3	734	074.13
L482	-6	257.04	3	734	562.45	R500	-10	802.71	3	733	965.53
L483	-6	311.02	3	734	374.47	R501	-10	885.20	3	733	968.74
L484	-6	314.72	3	734	350.51	R502	-10	881.86	3	733	961.55
L485	-6	333.65	3	734	228.11	R503	-11	126.25	3	734	094.41
L486	-6	348.56	3	734	131.70	R504	-11	190.84	3	734	119.39
L487	-6	371.65	3	733	982.34	R505	-11	233.19	3	734	138.88
L488	-6	759.60	3	734	029.71	R506	-11	311.70	3	734	142.36

Vel
Sheet

35A Van
of 37

P958/17

PADRESERWE KOÖRDINATE / ROAD RESERVE CO-ORDINATES							
LINKERKANT/LEFT HAND SIDE				REGTERKANT/RIGHT HAND SIDE			
	Y	X	WG 19°		Y	X	
L489	-6	927.96	3 733 893.16	R507	-11	342.64	3 734 124.88
L490	-7	114.43	3 733 863.45	R508	-11	399.20	3 734 117.38
L491	-7	367.93	3 733 840.46	R509	-11	461.83	3 734 105.75
L492	-7	614.92	3 733 822.45	R510	-11	698.19	3 734 061.87
L493	-7	838.16	3 733 841.48	R511	-11	851.96	3 734 034.50
L494	-7	855.47	3 733 842.95	R512	-11	866.67	3 734 016.87
L495	-8	076.81	3 733 874.65	R513	-11	899.56	3 733 977.48
L496	-8	084.26	3 733 875.69	R514	-11	924.01	3 733 948.19
L497	-9	396.70	3 734 058.39	R515	-11	965.55	3 733 884.16
L498	-9	419.45	3 734 061.55	R516	-12	219.19	3 733 677.49
L499	-9	698.88	3 734 100.45	R517	-12	242.43	3 733 660.31
L500	-9	895.52	3 734 118.60	R518	-12	302.02	3 733 626.90
L501	-10	083.87	3 734 114.10	R519	-12	411.06	3 733 584.02
L502	-10	092.84	3 734 113.07	R520	-12	750.61	3 733 446.02
L503	-10	226.41	3 734 098.30	R521	-12	801.27	3 733 425.43
L504	-10	469.21	3 734 040.51	R522	-13	003.73	3 733 343.33
L505	-10	466.41	3 734 032.91	R523	-13	083.23	3 733 324.66
L506	-10	501.46	3 734 013.41	R524	-13	203.25	3 733 291.59
L507	-10	512.98	3 733 959.42	R525	-13	213.79	3 733 288.16
L508	-10	447.27	3 733 941.25	R526	-13	371.11	3 733 237.09
L509	-10	461.73	3 733 888.96	R527	-13	496.33	3 733 213.10
L510	-10	655.71	3 733 942.58	R528	-13	536.21	3 733 228.57
L511	-10	768.11	3 733 819.98	R529	-13	619.19	3 733 213.57
L512	-10	797.46	3 733 779.78	R530	-13	693.84	3 733 213.57
L513	-10	803.32	3 733 771.73	R531	-13	819.23	3 733 213.57
L514	-10	955.30	3 733 610.86	R532	-13	850.22	3 733 263.53
L515	-11	031.39	3 733 510.43	R533	-13	922.18	3 733 264.57
L516	-11	187.10	3 733 376.04	R534	-13	958.80	3 733 234.95
L517	-11	394.55	3 733 313.87	R535	-13	969.20	3 733 226.54
L518	-11	560.69	3 733 294.02	R536	-14	035.17	3 733 243.57
L519	-11	695.10	3 733 281.45	R537	-14	077.18	3 733 286.54
L520	-11	907.15	3 733 255.98	R538	-14	216.21	3 733 285.81
L521	-12	191.44	3 733 221.60	R539	-14	284.86	3 733 265.54
L522	-12	212.39	3 733 219.97	R540	-14	410.14	3 733 228.54
L523	-12	275.56	3 733 215.07	R541	-14	853.23	3 733 152.55
L524	-12	403.10	3 733 226.28	R542	-14	992.15	3 733 158.56
L525	-12	504.39	3 733 257.70	R543	-15	024.24	3 733 181.55
L526	-12	600.31	3 733 284.64	R544	-15	082.19	3 733 204.53
L527	-12	677.94	3 733 306.03	R545	-15	122.22	3 733 217.55
L528	-12	744.72	3 733 314.61	R546	-15	216.51	3 733 226.19
L529	-12	779.36	3 733 311.65	R547	-15	259.99	3 733 248.10
L530	-12	885.26	3 733 302.60	R548	-15	367.86	3 733 281.10
L531	-12	936.26	3 733 288.60	R549	-15	431.72	3 733 283.08
L532	-12	964.52	3 733 269.02	R550	-15	484.26	3 733 277.53
L533	-13	115.13	3 733 211.59	R551	-15	505.21	3 733 274.04
L534	-13	167.14	3 733 175.11	R552	-15	552.20	3 733 258.03
L535	-13	209.88	3 733 180.61	R553	-15	611.22	3 733 232.06
L536	-13	300.22	3 733 143.63	R554	-15	656.21	3 733 202.58
L537	-13	477.08	3 733 103.89	R555	-15	671.30	3 733 190.52
L538	-13	556.19	3 733 086.11	R556	-15	787.24	3 733 138.58
L539	-13	760.52	3 733 087.43	R557	-15	823.08	3 733 136.53

Vel 36A Van 37
Sheet of

P958/17

PADRESERWE KOÖRDINATE / ROAD RESERVE CO-ORDINATES											
LINKERKANT/LEFT HAND SIDE					REGTERKANT/RIGHT HAND SIDE						
	Y		X	WG 19°		Y		X			
L540	-13	888.03	3	733	090.20	R558	-15	886.22	3	733	092.56
L541	-13	986.94	3	733	092.34	R559	-15	922.20	3	733	085.65
L542	-14	010.19	3	733	082.54	R560	-16	016.51	3	733	070.77
L543	-14	014.18	3	733	072.54	R561	-16	112.79	3	733	064.91
L544	-14	034.22	3	733	070.51	R562	-16	577.24	3	733	067.02
L545	-14	049.18	3	733	086.53	R563	-16	671.44	3	733	054.29
L546	-14	136.18	3	733	067.54	R564	-16	773.98	3	733	015.00
L547	-14	252.93	3	733	015.80	R565	-16	863.65	3	732	951.88
L548	-14	312.06	3	732	989.50	R566	-16	968.06	3	732	836.90
L549	-14	336.11	3	732	988.54	R567	-17	034.96	3	732	774.57
L550	-14	368.29	3	733	012.64	R568	-17	113.41	3	732	733.38
L551	-14	426.30	3	732	988.62	R569	-17	180.89	3	732	719.78
L552	-14	543.30	3	733	009.56	AR1	-10	936.70	3	733	866.57
L553	-14	642.25	3	733	053.62	AR2	-10	976.03	3	733	880.90
L554	-14	745.23	3	733	050.58	AR3	-11	012.70	3	733	898.36
L555	-14	855.28	3	733	043.58	AR4	-11	144.19	3	734	009.88
L556	-14	884.27	3	733	030.61	AR5	-11	306.69	3	734	043.87
L557	-14	956.28	3	733	028.58	AR6	-11	421.19	3	734	002.87
L558	-14	979.27	3	733	042.59	AR7	-11	776.19	3	733	946.45
L559	-15	081.10	3	733	040.61	AR8	-11	819.91	3	733	910.38
L560	-15	180.44	3	733	085.78	AR9	-11	848.35	3	733	880.64
L561	-15	346.23	3	733	138.58	AR10	-11	871.45	3	733	848.44
L562	-15	416.19	3	733	148.58	AR11	-11	895.82	3	733	832.95
L563	-15	486.69	3	733	145.84	AR12	-11	943.75	3	733	811.07
L564	-15	618.00	3	733	107.58	AR13	-11	998.53	3	733	795.29
L565	-15	774.46	3	733	040.31	AR14	-12	037.65	3	733	773.06
L566	-15	898.99	3	733	012.70	AR15	-12	111.43	3	733	720.00
L567	-15	966.34	3	732	989.70	AR16	-12	133.29	3	733	680.62
L568	-16	111.89	3	732	985.31	AR17	-12	239.29	3	733	606.62
L569	-16	212.50	3	732	997.67	AR18	-12	323.23	3	733	579.91
L570	-16	512.32	3	733	003.35	AR19	-12	396.17	3	733	556.71
L571	-16	590.01	3	733	000.82	AR20	-12	739.49	3	733	418.40
L572	-16	734.72	3	732	959.96	AR21	-12	760.47	3	733	409.95
L573	-16	777.06	3	732	922.03	AR22	-12	755.25	3	733	397.36
L574	-16	842.64	3	732	856.83	AR23	-12	634.67	3	733	385.99
L575	-16	937.91	3	732	752.70	AR24	-12	520.80	3	733	358.98
L576	-17	038.96	3	732	672.02	AR25	-12	386.15	3	733	321.11
L577	-17	129.36	3	732	657.65	AR26	-12	295.09	3	733	298.66
L578	-17	167.25	3	732	655.04	AR27	-12	256.11	3	733	300.08
						AR28	-12	201.40	3	733	302.07
						AR29	-11	940.83	3	733	332.48
						AR30	-11	704.66	3	733	360.89
						AR31	-11	571.05	3	733	380.71
						AR32	-11	409.07	3	733	397.45
						AR33	-11	317.53	3	733	420.47
						AR34	-11	176.15	3	733	522.79
						AR35	-11	108.25	3	733	580.61
						AR36	-11	041.88	3	733	672.28
						AR37	-11	002.68	3	733	745.79
						AR38	-10	925.89	3	733	791.15

Vel
Sheet37A Van
of 37

P958/17