



# Government Gazette Staatskoerant

REPUBLIC OF SOUTH AFRICA  
REPUBLIEK VAN SUID AFRIKA

Vol. 668

11

February  
Februarie

2021

No. 44146

N.B. The Government Printing Works will not be held responsible for the quality of "Hard Copies" or "Electronic Files" submitted for publication purposes

ISSN 1682-5845



9 771682 584003



**AIDS HELPLINE: 0800-0123-22 Prevention is the cure**

**IMPORTANT NOTICE:**

**THE GOVERNMENT PRINTING WORKS WILL NOT BE HELD RESPONSIBLE FOR ANY ERRORS THAT MIGHT OCCUR DUE TO THE SUBMISSION OF INCOMPLETE / INCORRECT / ILLEGIBLE COPY.**

**No FUTURE QUERIES WILL BE HANDLED IN CONNECTION WITH THE ABOVE.**

**Contents**

<i>No.</i>		<i>Gazette No.</i>	<i>Page No.</i>
<b>GOVERNMENT NOTICES • GOEWERMENTSKENNISGEWINGS</b>			
<b>Transport, Department of / Vervoer, Departement van</b>			
82	South African National Roads Agency Limited and National Roads Act (7/1998): Huguenot, Vaal River, Great North, Tsitsikamma, South Coast, North Coast, Mariannhill, Magalies, N17 and R30/R730/R34 Toll Roads: Publication of the amounts of Toll for the different categories of motor vehicles, and the date and time from which the toll tariffs shall become payable .....	44146	3
82	Suid-Afrikaanse Nasionale Padagentskap Beperk en Nasionale Paaie Wet (7/1998) : Hugenote, Vaalrivier, Verre Noord, Tsitsikamma, Suidkus, Noordkus, Mariannhill, Magalies, N17 en R30/R730/R34 Tolpaaie: Publisering van die Tolbedrae vir die verskillende kategorieë van motorvoertuie, en die datum en tyd vanaf die tolbedrae betaalbaar word .....	44146	17

---

**GOVERNMENT NOTICES • GOEWERMENTSKENNISGEWINGS**

---

**DEPARTMENT OF TRANSPORT**

NO. 82

11 February 2021

**THE SOUTH AFRICAN NATIONAL ROADS AGENCY SOC LIMITED****HUGUENOT, VAAL RIVER, GREAT NORTH, TSITSIKAMMA, SOUTH COAST, NORTH COAST, MARIANNHILL, MAGALIES, N17 AND R30/R730/R34 TOLL ROADS: PUBLICATION OF THE AMOUNTS OF TOLL FOR THE DIFFERENT CATEGORIES OF MOTOR VEHICLES, AND THE DATE AND TIME FROM WHICH THE TOLL TARIFFS SHALL BECOME PAYABLE**

The Head of the Department hereby, in terms of section 28(4) read with section 27(3) of The South African National Roads Agency Limited and National Roads Act, 1998 (Act No. 7 of 1998) [the Act], makes known that the amounts of toll to be levied in terms of section 27(1)(b) of the Act at the toll plazas located on the Huguenot, Vaal River, Great North, Tsitsikamma, South Coast, North Coast, Mariannhill, Magalies, N17 and R30/R730/R34 Toll Roads, and the date and time from which the amounts of toll shall become payable, have been determined by the Minister of Transport in terms of section 27(3)(a) of the Act, and that the said amounts shall be levied in terms of section 27(3)(b) and (d) of the Act, as set out in the Schedule from 1 March 2021 ("Effective Date").

This notice, from the Effective Date, repeals and replaces all previous Toll Tariff Notices in respect of the aforementioned toll roads.



**Mr Alec Moemi**  
**DIRECTOR-GENERAL: TRANSPORT**

## SCHEDULE

### 1. DEFINITIONS

The following words and expressions shall have the meanings stated, unless the context otherwise indicates.

- 1.1 **“Abnormal vehicle”** means a motor vehicle exceeding the legal dimensions as described in the Road Traffic Act, 1996 (Act No. 93 of 1996), as amended, or in any other law.
- 1.2 **“Axle”** means a device or set of devices, whether continuous across the width of the vehicle or not, about which the wheels of the vehicle rotate and which is so placed that, when the vehicle is travelling straight ahead, the vertical centre-lines of such wheels are in one vertical plane at right angles to the longitudinal centre-line of such vehicle. Axle shall also include an axle that is lifted and of which the wheels are not in contact with the road surface.
- 1.3 **“Heavy axle”** means an axle the wheels of which are fitted with tyres of a size (bead seat diameter) greater than 406,4 millimetres (16 inches), or an axle with more than two (2) wheels irrespective of tyre size, but excluding any axle of a motorcycle, a motor tricycle or a motor car.
- 1.4 **“Heavy vehicle”** means a motor vehicle with at least one heavy axle and/or any vehicle which is principally designed or adapted for the conveyance of persons exceeding sixteen (16) in number.
- 1.5 **“Light delivery vehicle”** means a motor vehicle designed or adapted for the conveyance of persons and freight with no heavy axle as defined in paragraph 1.3 above.
- 1.6 **“Light vehicle”** means a motor vehicle, other than a heavy vehicle.
- 1.7 **“Motor car”** means a motor vehicle, other than a motorcycle or a motor tricycle, designed or adapted solely or principally for the conveyance of persons not exceeding sixteen (16) in number, but excluding any vehicle with an axle with more than two (2) wheels irrespective of tyre size.
- 1.8 **“Motorcycle”** means a motor vehicle that has two wheels and includes any such vehicle having a side-car attached thereto.
- 1.9 **“Motor tricycle”** means a motor vehicle, other than a motorcycle with a side-car, which has three wheels and which is designed to be driven by means of the type of controls usually fitted to a motorcycle.
- 1.10 **“Motor vehicle”** means an entity comprising of one or more mechanically/electrically powered units with or without any trailer(s) physically joined by means of tow bars, tow ropes or mechanical articulation, and includes, inter alia:
- (a) a motorcycle;
  - (b) a motor tricycle;
  - (c) a motor car;
  - (d) a vehicle which has pedals and a mechanically/electrically powered unit as an integral part thereof or attached thereto and which is designed or adapted to be propelled by means of either such pedals or such mechanical/electrical unit or both; and
  - (e) a light delivery vehicle (a bakkie).

- 1.11 **“Trailer”** means a vehicle which is not self-propelled and which is designed or adapted to be drawn by a motor vehicle but does not include a side-car attached to a motorcycle.

## 2. CATEGORIES OF MOTOR VEHICLES

**Class 1: *Light vehicles:***

Light vehicles are motor vehicles, other than heavy vehicles as defined above, with or without a trailer, and include motorcycles, motor tricycles and motor cars.

**Class 2: *Medium heavy vehicles:***

Medium heavy vehicles are heavy vehicles, as defined above, with two axles.

**Class 3: *Large heavy vehicles:***

Large heavy vehicles are heavy vehicles, as defined above, with three or four axles.

**Class 4: *Extra large heavy vehicles:***

Extra large heavy vehicles are heavy vehicles, as defined above, with five or more axles.

### 3. TOLL TARIFF

- 3.1 The amounts of toll for the different categories of motor vehicles, payable at the toll plazas located on the Huguenot, Vaal River, Great North, Tsitsikamma, South Coast, North Coast, Mariannahill, Magalies, N17 and R30/R730/R34 Toll Roads, for the usage of the toll road, or any part thereof, are stated in Table 1.

TABLE 1: TOLL TARIFF						
TOLL ROAD	PLAZA		CLASS 1	CLASS 2	CLASS 3	CLASS 4
N1 Huguenot	Huguenot	Mainline	R42.50	R118.00	R185.00	R300.00
N1 Vaal River	Verkeerdevlei	Mainline	R61.50	R123.00	R185.00	R260.00
	Vaal	Mainline	R71.50	R135.00	R162.00	R216.00
	Grasmere	Mainline	R21.50	R64.00	R75.00	R99.00
		Ramp (S)	R11.00	R32.00	R38.00	R49.00
		Ramp (N)	R11.00	R32.00	R38.00	R49.00
N1 Great North	Kranskop	Mainline	R48.50	R123.00	R165.00	R202.00
		Ramp	R13.50	R36.00	R42.00	R63.00
	Nyl	Mainline	R62.50	R117.00	R141.00	R189.00
		Ramp	R19.50	R36.00	R42.00	R54.00
	Sebetiela	Ramp	R19.50	R36.00	R45.00	R60.00
	Capricorn	Mainline	R50.00	R137.00	R161.00	R201.00
	Baobab	Mainline	R48.50	R132.00	R181.00	R218.00
N2 Tsitsikamma	Tsitsikamma	Mainline	R57.00	R144.00	R343.00	R486.00
		Ramp	R57.00	R144.00	R343.00	R486.00
N2 South Coast	Izotsha	Ramp	R10.00	R18.00	R24.00	R42.00
	Oribi	Mainline	R32.00	R57.00	R78.00	R127.00
		Ramp (S)	R14.50	R27.00	R36.00	R57.00
		Ramp (N)	R17.50	R30.00	R42.00	R79.00
	Umtentweni	Ramp	R13.50	R24.00	R33.00	R54.00
N2 North Coast	King Shaka Airport	Ramp	R6.50	R13.00	R20.00	R27.00
	oThongathi	Mainline	R12.50	R25.00	R33.00	R48.00
		Ramp (S)	R6.00	R13.00	R17.00	R24.00
		Ramp (N)	R6.00	R13.00	R17.00	R24.00
	Mvoti	Mainline	R14.50	R41.00	R55.00	R82.00
	Mandini	Ramp	R8.00	R15.00	R18.00	R24.00
	Dokodweni	Ramp	R21.50	R42.00	R48.00	R66.00
	Mtunzini	Mainline	R50.00	R96.00	R114.00	R170.00
		Ramp (S)	R41.50	R78.00	R93.00	R135.00
		Ramp (N)	R9.00	R18.00	R21.00	R36.00
N3 Mariannahill	Mariannahill	Mainline	R13.00	R23.00	R29.00	R45.00
N4 Magalies	Pelindaba	Mainline	R6.50	R12.00	R17.00	R21.00
	Quagga	Mainline	R5.00	R9.00	R12.00	R17.00
N17	Gosforth	Mainline	R13.50	R36.00	R39.00	R54.00
		Ramp (W)	R7.50	R15.00	R20.00	R26.00
		Ramp (E)	R6.00	R22.00	R24.00	R33.00
	Dalpark	Mainline	R12.50	R25.00	R33.00	R45.00
	Denne	Ramp	R10.50	R21.00	R27.00	R36.00
	Leandra	Mainline	R39.50	R100.00	R149.00	R198.00
		Ramp	R23.50	R60.00	R89.00	R119.00
	Trichardt	Mainline	R20.00	R49.00	R75.00	R99.00
	Ermelo	Mainline	R35.50	R89.00	R133.00	R177.00
	R30/R730/R34	Brandfort	Mainline	R49.00	R98.00	R148.00

#### 4. LOCAL USER TOLL TARIFF

- 4.1 A local user toll tariff, for different categories of motor vehicles, is granted, subject to the South African National Roads Agency SOC Limited's (SANRAL) terms and conditions (available at the Toll Plazas), to registered *bona fide* residents, employers or employees, located within an approved local user area, on successful application to the appropriate toll operator.
- 4.2 The local user toll tariffs for the local user areas, as shown on the various maps attached to this Notice and of which a copy can be obtained from SANRAL, for the different categories of motor vehicles, payable at the Veerkeerdevlei, Grasmere, Capricorn, Baobab, Tsitsikamma, Leandra, Trichardt, Ermelo and Brandfort Toll Plazas, located on the Vaal River, Great North, Tsitsikamma, N17 and R30/R730/R34 Toll Roads are stated in Table 2.

TABLE 2: LOCAL USER TOLL TARIFF – TYPE A							
TOLL ROAD	PLAZA		LOCAL USER AREA	CLASS 1	CLASS 2	CLASS 3	CLASS 4
N1 Vaal River	Verkeerdevlei	Mainline	Verkeerdevlei	R18.60	R37.00	R56.00	R74.00
	Grasmere	Mainline	Evaton Sebokeng Vanderbijlpark	R3.40	-	-	-
		Ramp (S)	Ennerdale Lenasia South	R2.00	-	-	-
		Ramp (N)	Ennerdale Lenasia South	R2.00	-	-	-
N1 Great North	Capricorn	Mainline	Capricorn	R14.40	R29.00	R36.00	R50.00
	Baobab	Mainline	Baobab	R16.60	R41.00	R57.00	R72.00
	Baobab	Mainline	Tshipise	R24.20	R60.00	R85.00	R109.00
N2 Tsitsikamma	Tsitsikamma	Mainline Ramp	Tsitsikamma	R17.20	-	-	-
		Mainline Ramp	Nature's Valley Coldstream	R8.60	-	-	-
N17	Leandra	Mainline	Leandra	R23.80	R60.00	R90.00	R119.00
		Ramp	Leandra	R14.20	R36.00	R54.00	R72.00
	Trichardt	Mainline	Trichardt	R9.80	R25.00	R38.00	R50.00
	Ermelo	Mainline	Ermelo	R17.60	R46.00	R67.00	R89.00
R30/R730/R34	Brandfort	Mainline	Area A	R5.00	R10.00	R15.00	R21.00
			Area B	R9.80	R20.00	R30.00	R42.00
			Area C	R19.60	R39.00	R59.00	R83.00

- 4.3 The local user toll tariffs for the local user area, for the different categories of motor vehicles, payable at the Mvoti Toll Plaza located on the North Coast Toll Road are stated in Table 3.

TABLE 3: LOCAL USER TOLL TARIFF – TYPE B							
TOLL ROAD	PLAZA		LOCAL USER AREA	CLASS 1	CLASS 2	CLASS 3	CLASS 4
N2 North Coast	Mvoti	Mainline	KwaDukuza	R4.40	R10.00	R15.00	R21.00
N2 North Coast	Dokodweni	Ramp	Mandeni Local Municipality wards 1, 2, 3, 8 and 9	R 3.00	R 6.00	R 8.00	R 10.00

## 5. LOCAL PUBLIC TRANSPORT OPERATOR TOLL TARIFF

- 5.1 A local public transport operator toll tariff, for Class 1 motor vehicles only, is granted, subject to SANRAL's terms and conditions (available at the Toll Plazas), to registered *bona fide* local public transport operators operating within an approved local user area, on successful application to the appropriate toll operator.
- 5.2 The local public transport operator toll tariffs for the local user areas, as shown on the various maps attached to this Notice and of which a copy can be obtained from SANRAL, for Class 1 motor vehicles only, payable at the Veerkeerdevei, Capricorn, Baobab and Brandfort Toll Plazas located on the Vaal River, Great North and R30/R730/R34 Toll Roads, are stated in Table 4.

TOLL ROAD	PLAZA	LOCAL USER AREA	CLASS 1
N1 Vaal River	Veerkeerdevei Mainline	Veerkeerdevei	R18.60
N1 Great North	Capricorn Mainline	Capricorn	R14.40
	Baobab Mainline	Baobab	R15.20
R30/R730/R34	Brandfort Mainline	Areas A, B & C	R9.20

## 6. FREQUENT USER DISCOUNT

- 6.1 At specified toll plazas, a frequent user discount on the toll tariff, for Class 1 motor vehicles only, is granted, subject to SANRAL's terms and conditions (available at the Toll Plazas), to registered frequent users who complete a prescribed number of passages within a stipulated period, on successful application to the appropriate toll operator. At some of the specified toll plazas, a registered *bona fide* local user and registered *bona fide* local public transport operator may also register as a frequent user. The frequent user discount, according to the number of passages completed within the stipulated period, is either applied to the value of the total number of passages, or to the specific range of trips.

A Frequent User Card must be tendered for payment at a toll plaza – a Local User Card, Local Public Transport Operator Card, valid Credit Card (e.g. Visa or Master Card), or valid Fleet Management Card, may be registered as a Frequent User Card.

- 6.2 The frequent user discounts for the specified toll plazas located on the Huguenot, Vaal River, Great North, South Coast, North Coast, Mariannhill, Magalies, N17 and R30/R730/R34 Toll Roads, for Class 1 motor vehicles only, for the number of passages completed within the stipulated period, on the toll tariffs stated in the relevant tables, are stated in Tables 5.1 and 5.2.

TOLL ROAD	PLAZA	CALENDAR MONTH	DISCOUNT FOR THE NO. OF PASSAGES		TOLL TARIFF TABLE
			20%*	40%*	
N1 Huguenot	Huguenot Mainline	1	20 to 39	40 and more	1
N1 Vaal River	Veerkeerdevei Mainline	1	20 to 39	40 and more	1, 2 and 4
	Grasmere Mainline	1	20 to 39	40 and more	1
N1	Capricorn Mainline	1	20 to 39	40 and more	1, 2 and 4



Great North	Baobab	Mainline	1	20 to 39	40 and more	1, 2 and 4
N2 South Coast	Izotsha	Ramp	3	20 to 39	40 and more	1
	Oribi	Mainline	3	20 to 39	40 and more	1
		Ramp (S)	3	20 to 39	40 and more	1
		Ramp (N)	3	20 to 39	40 and more	1
	Umtentweni	Ramp	3	20 to 39	40 and more	1
N2 North Coast	King Shaka Airport	Ramp	1	10 to 19	20 and more	1
	oThongathi	Mainline	1	20 to 39	40 and more	1
		Ramp (S)	1	20 to 39	40 and more	1
		Ramp (N)	1	20 to 39	40 and more	1
	Mvoti	Mainline	1	20 to 39	40 and more	1
	Mandini	Ramp	1	20 to 39	40 and more	1
	Dokodweni	Ramp	1	20 to 39	40 and more	1
	Mtunzini	Mainline	1	20 to 39	40 and more	1
		Ramp (S)	1	20 to 39	40 and more	1
Ramp (N)		1	20 to 39	40 and more	1	
N3 Mariannhill	Mariannhill	Mainline	1	20 to 39	40 and more	1
N4 Magalies	Pelindaba	Mainline	1	20 to 39	40 and more	1
	Quagga	Mainline	1	20 to 39	40 and more	1
N17	Gosforth	Mainline	1	35 to 69	70 and more	1
		Ramp (W)	1	35 to 69	70 and more	1
		Ramp (E)	1	35 to 69	70 and more	1
	Dalpark	Mainline	1	35 to 69	70 and more	1
R30/R730/R34	Brandfort	Mainline	1	20 to 39	40 and more	1, 2 and 4

\*The relevant frequent user discount is applied to the value of the total number of passages completed within the stipulated period.

TOLL ROAD	PLAZA		CALENDAR MONTH	DISCOUNT FOR THE NO. OF PASSAGES		TOLL TARIFF TABLE
				Passages per month	Discount*	
N17	Leandra	Mainline	1	1 to 15	0%	1 and 2
		Ramp	1	16 to 20	40%	
	Trichardt	Mainline	1	21 to 30	55%	
	Ermelo	Mainline	1	31 and more	70%	

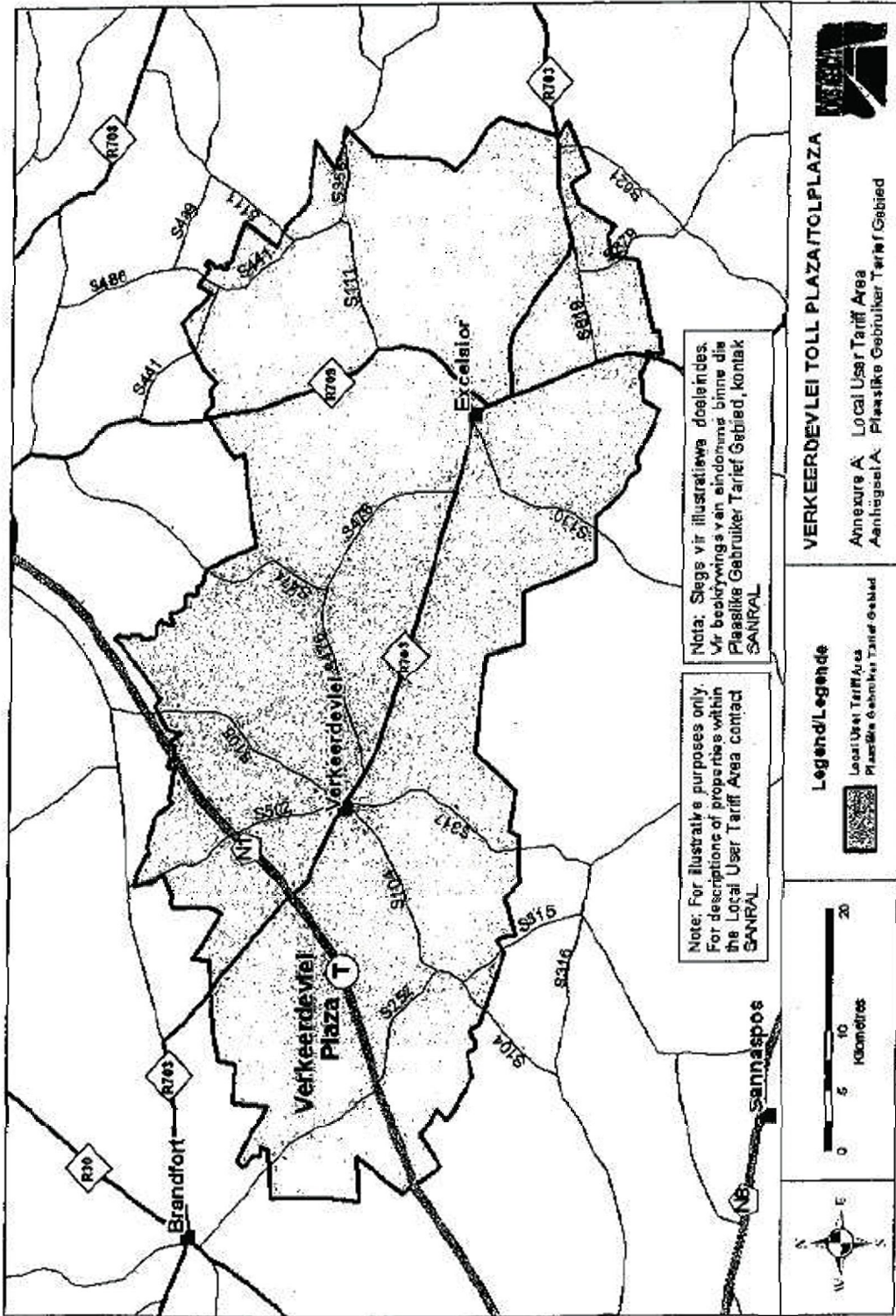
\*The frequent user discount as indicated only applies on the passages undertaken in the specific “passages per month” range at a specific toll plaza.

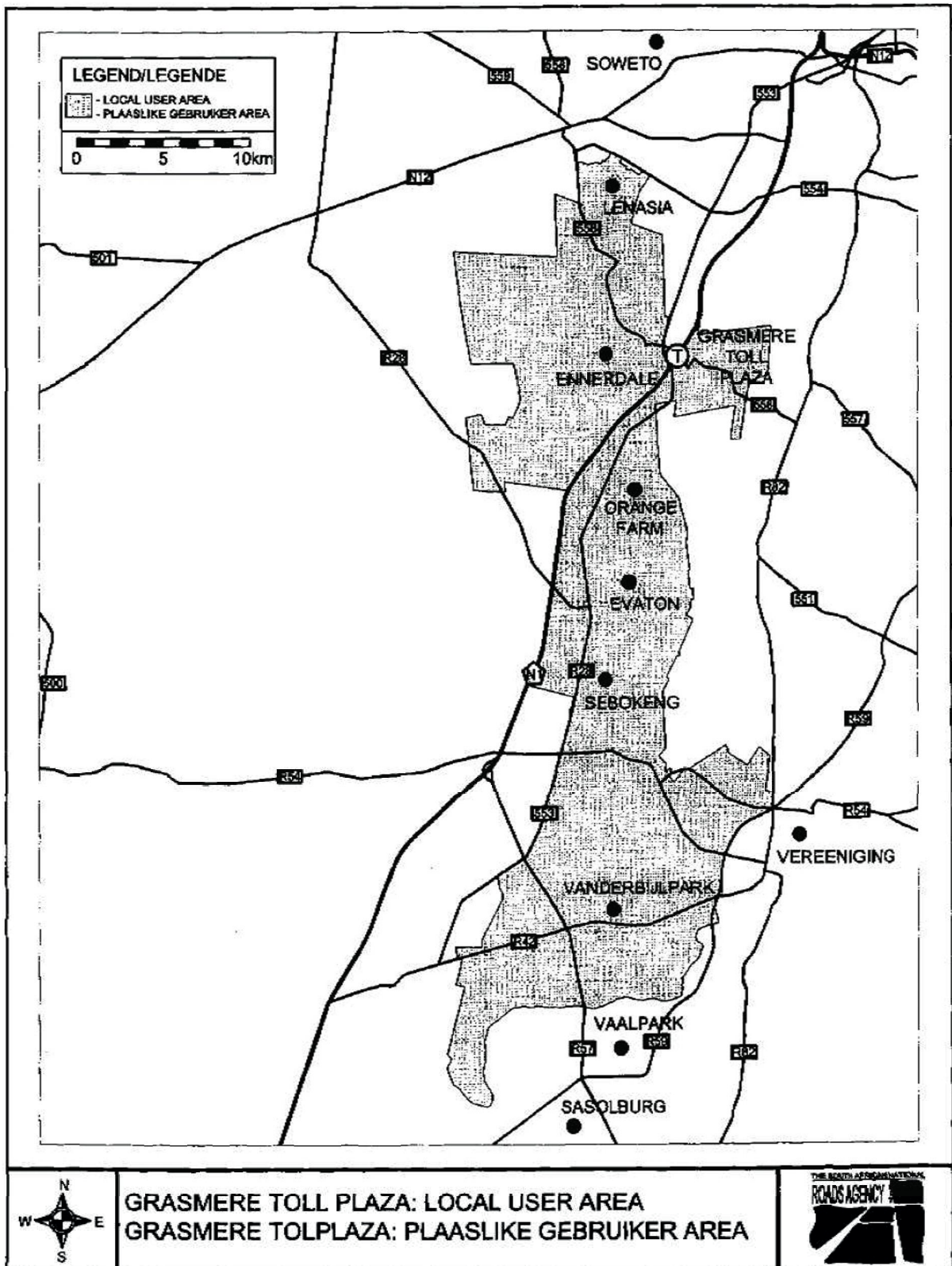
## 7. OPERATIONAL HOURS

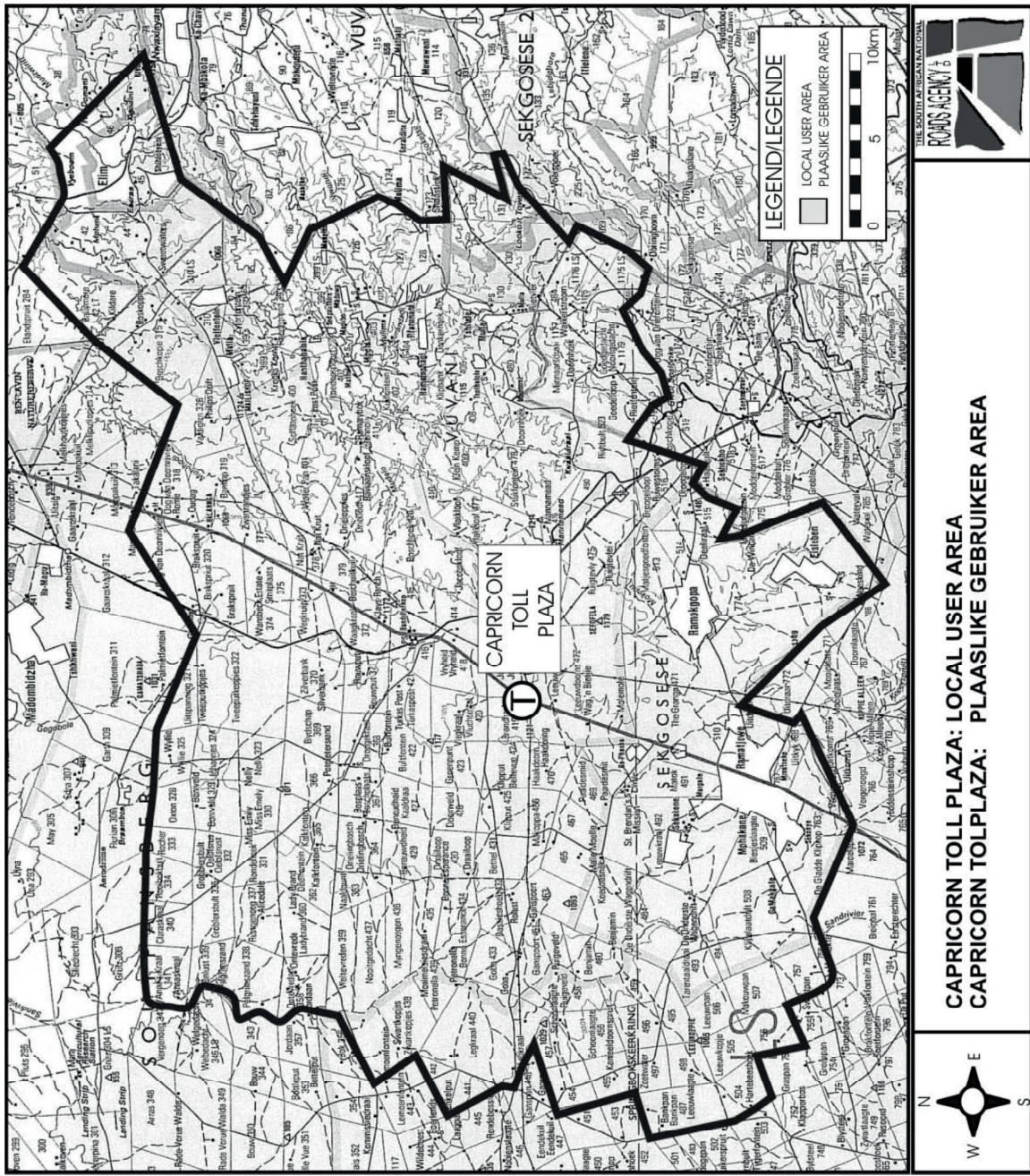
7.1 The said toll roads shall be open to traffic for 24 hours a day.

## 8. EFFECTIVE DATE

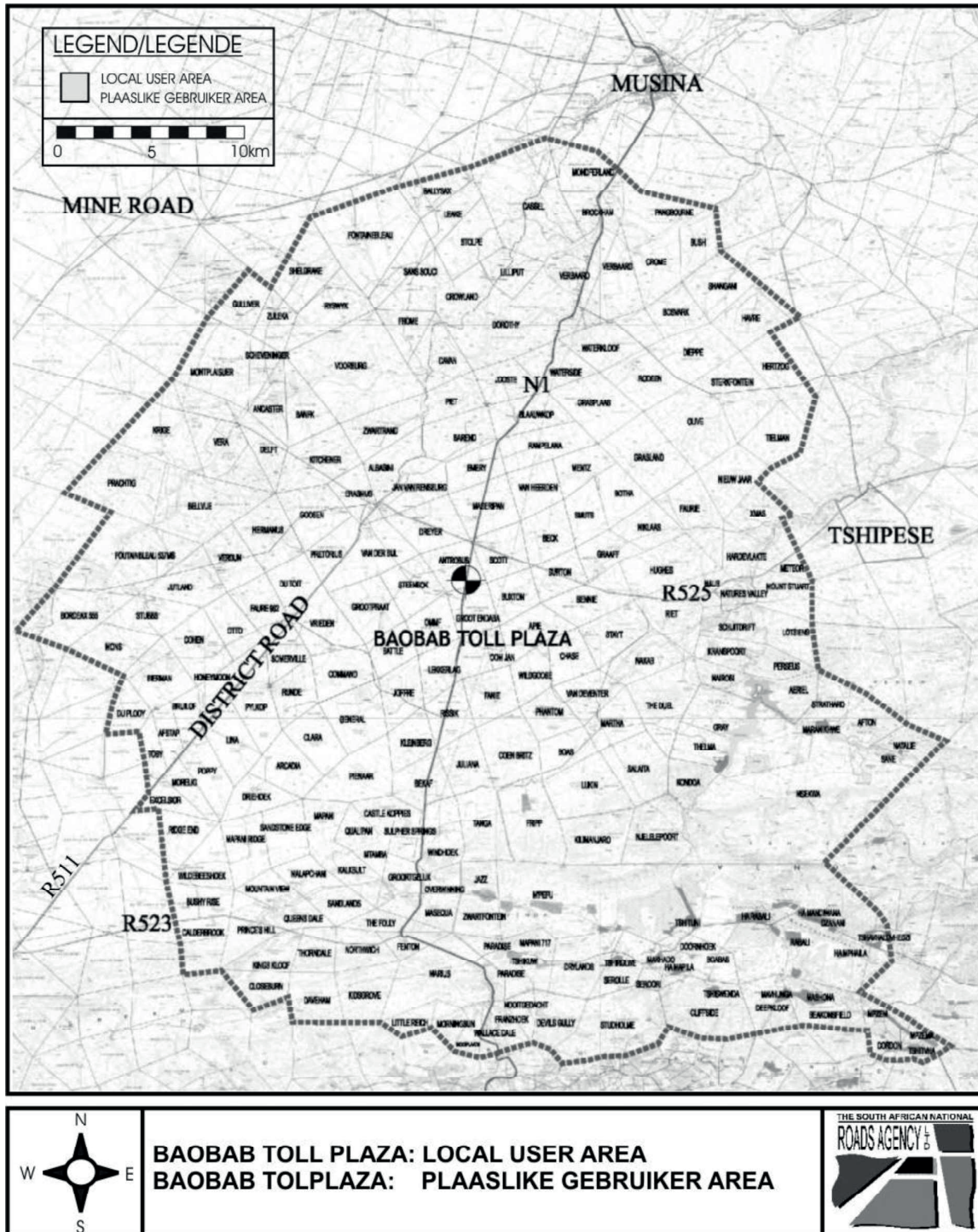
8.1 The date and time from which the said amounts of toll shall become payable, shall be 1 March 2021 at 00:00.

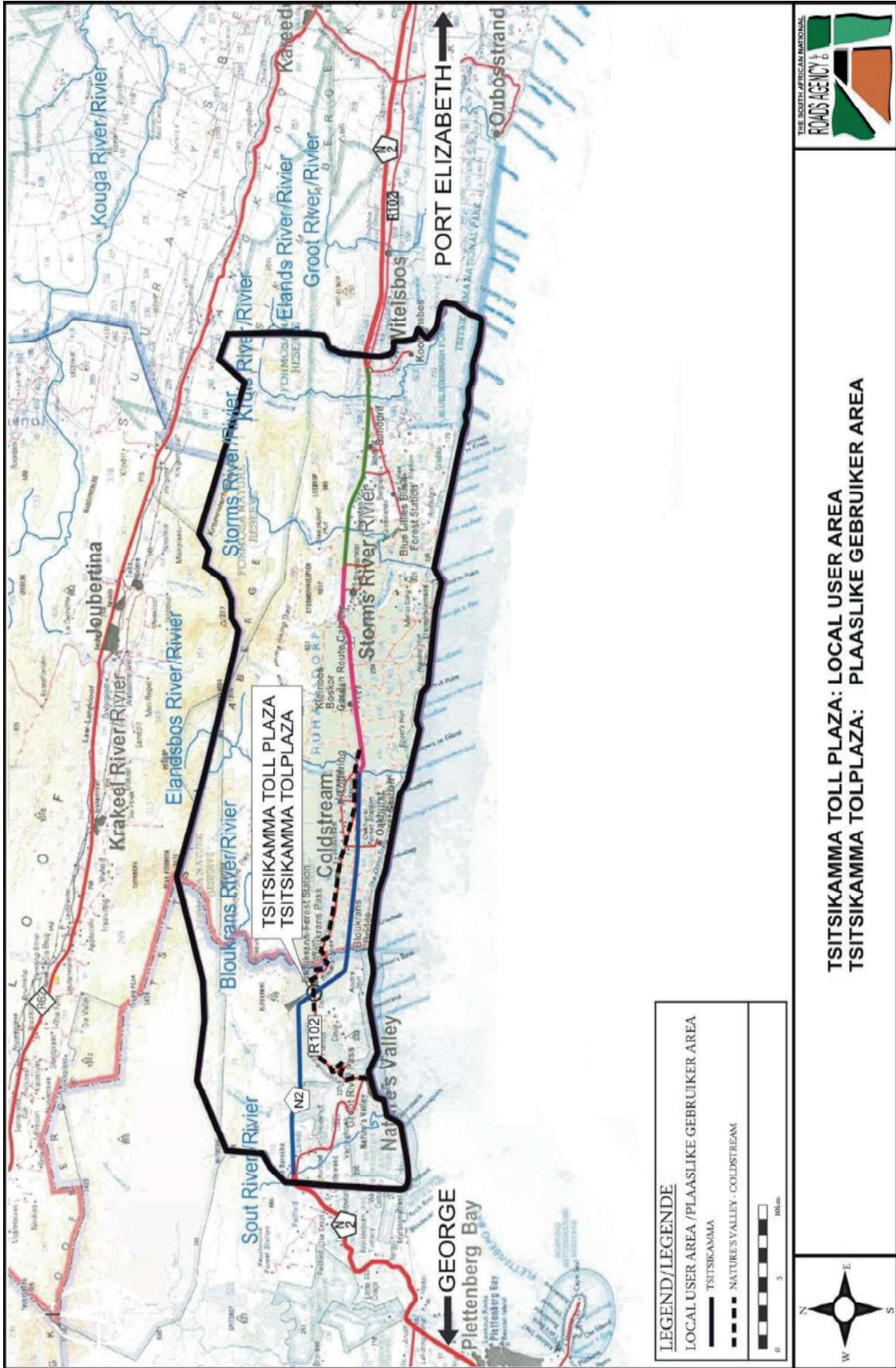


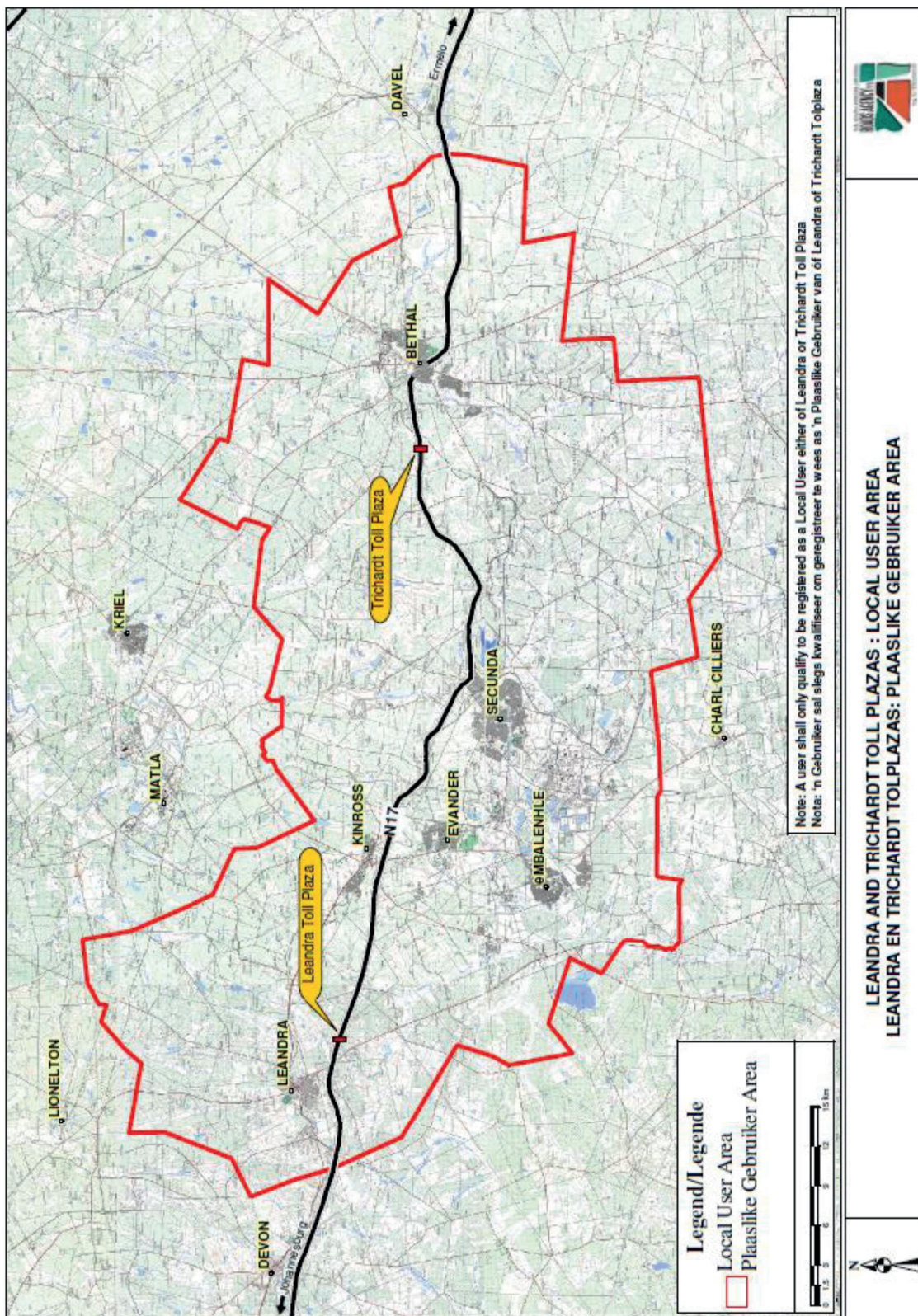


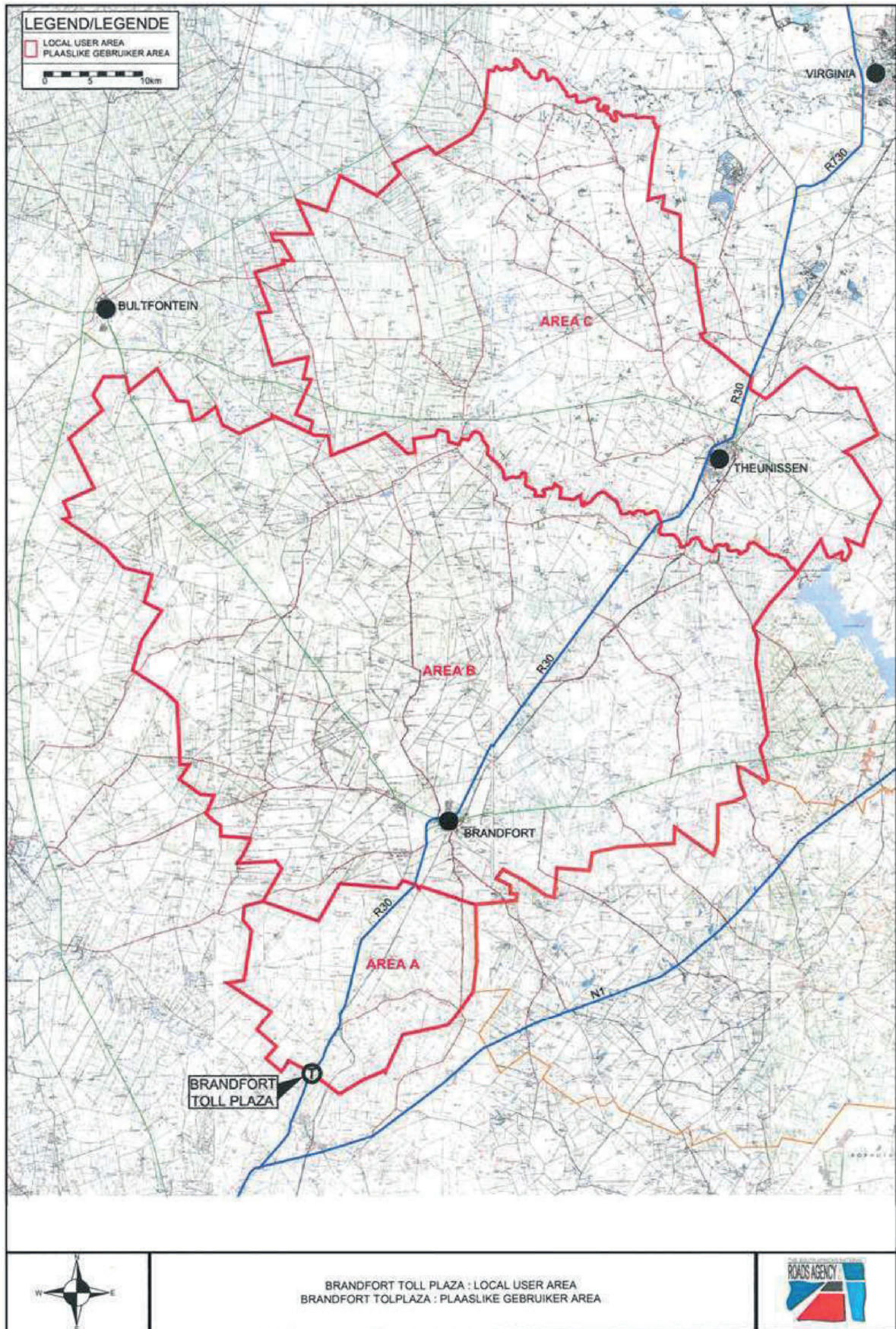


CAPRICORN TOLL PLAZA: LOCAL USER AREA  
CAPRICORN TOLPLAZA: PLAASLIKE GEBRUIKER AREA











---

**GOVERNMENT NOTICES • GOEWERMENTSKENNISGEWINGS**

---

**DEPARTEMENT VAN VERVOER**

NO. 82

11 Februarie 2021

**DIE SUID-AFRIKAANSE NASIONALE PADAGENTSKAP MSB BEPERK****HUGENOTE, VAALRIVIER, VERRE NOORD, TSITSIKAMMA, SUIDKUS, NOORDKUS, MARIANNHILL, MAGALIES, N17 EN R30/R730/R34 TOLPAAIE: PUBLISERING VAN DIE TOLBEDRAE VIR DIE VERSKILLENDE KATEGORIEË VAN MOTORVOERTUIE, EN DIE DATUM EN TYD VANAF DIE TOLBEDRAE BETAALBAAR WORD**

Die Hoof van die Departement maak hierby, kragtens die bepalings van artikel 28(4) saamgelees met artikel 27(3) van Die Suid-Afrikaanse Nasionale Padagentskap Beperk en Nasionale Paaie Wet, 1998 (Wet Nr. 7 van 1998) [die Wet], bekend dat die tolbedrae wat kragtens artikel 27(1)(b) van die Wet gehef sal word by die tolplazas geleë op die Hugenote, Vaalrivier, Verre Noord, Tsitsikamma, Suidkus, Noordkus, Mariannhill, Magalies, N17 en R30/R730/R34 Tolpaaie, en die datum en tyd vanaf die tolbedrae betaalbaar word, kragtens artikel 27(3)(a) van die Wet, deur die Minister van Vervoer bepaal is, en dat genoemde bedrae kragtens artikel 27(3)(b) en (d) van die Wet gehef sal word, soos in die Bylae uiteengesit en betaalbaar sal wees vanaf 1 Maart 2021 ("Effektiewe Datum").

Hierdie kennisgewing herroep en vervang alle vorige Toltarief Kennisgewings ten opsigte van die voorafgenoemde tolpaaie vanaf die Effektiewe datum.



**Mnr Alec Moemi**  
**DIREKTEUR-GENERAAL: VERVOER**

**BYLAE****1. WOORDOMSKRYWINGS**

Die volgende woorde en uitdrukkings sal die betekenis hê soos uiteengesit, tensy dit uit die samehang anders blyk.

- 1.1 **“Abnormale voertuig”** beteken ‘n motorvoertuig wat die wettige afmetings, soos beskryf in die Padverkeerswet, 1996 (Wet Nr. 93 van 1996), soos gewysig, of in enige ander wet oorskry.
- 1.2 **“As”** beteken ‘n toestel of stel toestelle, hetsy onafgebroke oor die breedte van die voertuig of nie, waarom die wiele van die voertuig ronddraai en wat so geplaas is dat wanneer die voertuig reguit vorentoe ry, die vertikale hartlyne van sodanige wiele in een vertikale vlak reghoekig met die langshartlyn van sodanige voertuig is. As sal ook ‘n as insluit waarvan die wiele opgelig en nie in kontak met die padoppervlak is nie.
- 1.3 **“Swaar as”** beteken ‘n as waarvan die wiele toegerus is met bande met ‘n grootte (spanranddeursnee) groter as 406,4 millimeter (16 duim), of ‘n as met meer as twee (2) wiele, ongeag die bandgrootte, maar nie ‘n as van ‘n motorfiets, ‘n motordriewiel of ‘n motorkar nie.
- 1.4 **“Swaar voertuig”** beteken ‘n motorvoertuig met minstens een swaar as en/of ‘n motorvoertuig wat ontwerp of aangepas is uitsluitlik of hoofsaaklik vir die vervoer van meer as sestien (16) persone.
- 1.5 **“Ligte afleweringvoertuig”** beteken ‘n motorvoertuig wat ontwerp of aangepas is vir die vervoer van persone en vrag met geen swaar as soos omskryf in paragraaf 1.3 hierbo nie.
- 1.6 **“Ligte voertuig”** beteken ‘n motorvoertuig, uitgesonderd ‘n swaar voertuig.
- 1.7 **“Motorkar”** beteken ‘n motorvoertuig, uitgesonderd ‘n motorfiets of motordriewiel, wat ontwerp of aangepas is uitsluitlik of hoofsaaklik vir die vervoer van hoogstens sestien (16) persone, maar uitgesluit enige voertuig met meer as twee (2) wiele, ongeag die bandgrootte, op enige as.
- 1.8 **“Motorfiets”** beteken ‘n motorvoertuig met twee wiele en ook enige sodanige voertuig waaraan ‘n syspan geheg is.
- 1.9 **“Motordriewiel”** beteken ‘n motorvoertuig, uitgesonderd ‘n motorfiets met syspan, wat drie wiele het en ontwerp is om bestuur te word deur middel van die tipe kontroles waarmee ‘n motorfiets gewoonlik toegerus is.
- 1.10 **“Motorvoertuig”** beteken ‘n entiteit bestaande uit een of meer meganies/elektries aangedrewe eenhede met of sonder sleepwa of sleepwaens wat fisies aan mekaar gekoppel is deur middel van sleepstange, sleeptoue of meganiese geleiding en sluit onder andere in:
  - (a) ‘n motorfiets;
  - (b) ‘n motordriewiel;
  - (c) ‘n motorkar;
  - (d) ‘n voertuig met pedale en met ‘n meganies/elektries aangedrewe eenheid as ‘n integreerende deel daarvan of daaraan vasgeheg en wat ontwerp of aangepas is om of deur middel van sodanige pedale of deur middel van die meganiese/elektriese eenheid of deur albei voortbeweeg te word; en
  - (e) ‘n ligte afleweringvoertuig (‘n bakkie).

- 1.11 **“Sleepwa”** beteken ‘n voertuig wat nie selfaangedrewe is nie en wat ontwerp of aangepas is om deur ‘n motorvoertuig getrek te word, maar sluit nie ‘n syspan wat aan ‘n motorfiets vasgeheg is in nie.

## 2. KATEGORIEë VAN MOTORVOERTUIE

**Klas 1:           Ligte voertuie:**

Ligte voertuie is motorvoertuie, uitgesonderd swaar voertuie soos hierbo omskryf, met of sonder sleepwa, en sluit motorfiets, motordriewiele en motorkarre in.

**Klas 2:           Medium swaar voertuie:**

Medium swaar voertuie, is swaar voertuie, soos hierbo omskryf, met twee asse.

**Klas 3:           Groot swaar voertuie:**

Groot swaar voertuie, is swaar voertuie, soos hierbo omskryf, met drie of vier asse.

**Klas 4:           Ekstra groot swaar voertuie:**

Ekstra groot swaar voertuie, is swaar voertuie, soos hierbo omskryf, met vyf of meer asse.

### 3. TOLTARIEF

- 3.1 Die tolbedrae vir die verskillende kategorieë motorvoertuie betaalbaar by die tolplazas geleë op die Hugenote, Vaalrivier, Verre Noord, Tsitsikamma, Suidkus, Noordkus, Mariannhill, Magalies, N17 en R30/R730/R34 Tolpaaie, vir die gebruik van 'n tolpad, of enige deel daarvan, is uiteengesit in Tabel 1.

TABEL 1: TOLTARIEF						
TOLPAD	PLAZA		KLAS 1	KLAS 2	KLAS 3	KLAS 4
N1 Hugenote	Huguenot	Hooflyn	R42.50	R118.00	R185.00	R300.00
	N1 Vaalrivier	Verkeerdevlei	Hooflyn	R61.50	R123.00	R185.00
Vaal		Hooflyn	R71.50	R135.00	R162.00	R216.00
Grasmere		Hooflyn	R21.50	R64.00	R75.00	R99.00
		Op-en Afrit (S)	R11.00	R32.00	R38.00	R49.00
		Op-en Afrit (N)	R11.00	R32.00	R38.00	R49.00
N1 Verre Noord	Kranskop	Mainline	R48.50	R123.00	R165.00	R202.00
		Ramp	R13.50	R36.00	R42.00	R63.00
	Nyl	Mainline	R62.50	R117.00	R141.00	R189.00
		Ramp	R19.50	R36.00	R42.00	R54.00
	Sebetiela	Ramp	R19.50	R36.00	R45.00	R60.00
	Capricorn	Mainline	R50.00	R137.00	R161.00	R201.00
	Baobab	Mainline	R48.50	R132.00	R181.00	R218.00
N2 Tsitsikamma	Tsitsikamma	Hooflyn	R57.00	R144.00	R343.00	R486.00
		Op-en Afrit	R57.00	R144.00	R343.00	R486.00
N2 Suidkus	Izotsha	Op-en Afrit	R10.00	R18.00	R24.00	R42.00
		Hooflyn	R32.00	R57.00	R78.00	R127.00
		Op-en Afrit (S)	R14.50	R27.00	R36.00	R57.00
		Op-en Afrit (N)	R17.50	R30.00	R42.00	R79.00
	Umtentweni	Op-en Afrit	R13.50	R24.00	R33.00	R54.00
N2 Noordkus	King Shaka Lughawe	Oprit	R6.50	R13.00	R20.00	R27.00
		oThongathi	Hooflyn	R12.50	R25.00	R33.00
	Op-en Afrit (S)		R6.00	R13.00	R17.00	R24.00
	Op-en Afrit (N)		R6.00	R13.00	R17.00	R24.00
	Mvoti	Hooflyn	R14.50	R41.00	R55.00	R82.00
	Mandini	Op-en Afrit	R8.00	R15.00	R18.00	R24.00
	Dokodweni	Op-en Afrit	R21.50	R42.00	R48.00	R66.00
	Mtunzini	Hooflyn	R50.00	R96.00	R114.00	R170.00
		Op-en Afrit (S)	R41.50	R78.00	R93.00	R135.00
Op-en Afrit (N)		R9.00	R18.00	R21.00	R36.00	
N3 Mariannhill	Mariannhill	Hooflyn	R13.00	R23.00	R29.00	R45.00
N4 Magalies	Pelindaba	Hooflyn	R6.50	R12.00	R17.00	R21.00
	Quagga	Hooflyn	R5.00	R9.00	R12.00	R17.00
N17	Gosforth	Hooflyn	R13.50	R36.00	R39.00	R54.00
		Op-en Afrit (W)	R7.50	R15.00	R20.00	R26.00
		Op-en Afrit (O)	R6.00	R22.00	R24.00	R33.00
	Dalpark	Hooflyn	R12.50	R25.00	R33.00	R45.00
	Denne	Op-en Afrit	R10.50	R21.00	R27.00	R36.00
	Leandra	Hooflyn	R39.50	R100.00	R149.00	R198.00
		Op-en Afrit	R23.50	R60.00	R89.00	R119.00
	Trichardt	Hooflyn	R20.00	R49.00	R75.00	R99.00
	Ermelo	Hooflyn	R35.50	R89.00	R133.00	R177.00
R30/R730/R34	Brandfort	Hooflyn	R49.00	R98.00	R148.00	R208.00

#### 4. PLAASLIKE GEBRUIKER TOLTARIEF

- 4.1 'n Plaaslike gebruiker toltarief, vir verskillende kategorieë van motorvoertuie, word toegestaan, onderhewig aan die terme en voorwaardes van die Suid-Afrikaanse Nasionale Padagentskap MSB Beperk (SANRAL) (beskikbaar by die Tolplazas), aan geregistreerde *bona fide* inwoners, werkgewers of werknemers geleë binne 'n goedgekeurde plaaslike gebruiker area, na suksesvolle aansoek by die toepaslike toloperateur.
- 4.2 Die plaaslike gebruiker toltariewe vir die plaaslike gebruiker areas, soos aangedui op die verskeie kaarte aangeheg by hierdie Kennisgewing en waarvan 'n afskrif by SANRAL verkry kan word, vir die verskillende kategorieë van motorvoertuie, betaalbaar by die Verkeerdevelei, Grasmere, Capricorn, Baobab, Tsitsikamma, Leandra, Trichardt, Ermelo en Brandfort Tolplazas, geleë op die Vaalrivier, Verre Noord, Tsitsikamma, N17 en R30/R730/R34 Tolpaaie, is uiteengesit in Tabel 2.

TABEL 2: PLAASLIKE GEBRUIKER TOLTARIEF – TIPE A							
TOLPAD	PLAZA		PLAASLIKE GEBRUIKER AREA	KLAS 1	KLAS 2	KLAS 3	KLAS 4
N1 Vaalrivier	Verkeerdevelei	Hooflyn	Verkeerdevelei	R18.60	R37.00	R56.00	R74.00
	Grasmere	Hooflyn	Evaton Sebokeng Vanderbijlpark	R3.40	-	-	-
	Op- en Afrit (S)		Ennerdale Lenasia South	R2.00	-	-	-
	Op- en Afrit (N)		Ennerdale Lenasia South	R2.00	-	-	-
N1 Verre Noord	Capricorn	Hooflyn	Capricorn	R14.40	R29.00	R36.00	R50.00
	Baobab	Hooflyn	Baobab	R16.60	R41.00	R57.00	R72.00
	Baobab	Hooflyn	Tshipise	R24.20	R60.00	R85.00	R109.00
N2 Tsitsikamma	Tsitsikamma	Hooflyn	Tsitsikamma	R17.20	-	-	-
		Op- en Afrit	Nature's Valley Coldstream	R8.60	-	-	-
N17	Leandra	Mainline	Leandra	R23.80	R60.00	R90.00	R119.00
		Ramp	Leandra	R14.20	R36.00	R54.00	R72.00
	Trichardt	Mainline	Trichardt	R9.80	R25.00	R38.00	R50.00
	Ermelo	Mainline	Ermelo	R17.60	R46.00	R67.00	R89.00
R30/R730/R34	Brandfort	Hooflyn	Area A	R5.00	R10.00	R15.00	R21.00
			Area B	R9.80	R20.00	R30.00	R42.00
			Area C	R19.60	R39.00	R59.00	R83.00

- 4.3 Die plaaslike gebruiker toltariewe vir die plaaslike gebruiker area, vir die verskillende kategorieë van motorvoertuie, betaalbaar by die Mvoti Tolplaza geleë op die Noordkus Tolpad, is uiteengesit in Tabel 3.

TABEL 3: PLAASLIKE GEBRUIKER TOLTARIEF – TIPE B							
TOLPAD	PLAZA		PLAASLIKE GEBRUIKER AREA	KLAS 1	KLAS 2	KLAS 3	KLAS 4
N2 Noordkus	Mvoti	Hooflyn	KwaDukuza	R4.40	R10.00	R15.00	R21.00
N2 Noordkus	Dokodweni	Ramp	Mandeni Local Municipality wards 1, 2, 3, 8 and 9	R 3.00	R 6.00	R 8.00	R 10.00

## 5. PLAASLIKE OPENBARE VERVOER OPERATEUR TOLTARIEF

- 5.1 'n Plaaslike openbare vervoer operateur toltarief, vir Klas 1 motorvoertuie alleen, word toegestaan, onderhewig aan die terme en voorwaardes van SANRAL (beskikbaar by die Tolplazas), aan geregistreeerde *bona fide* plaaslike openbare vervoer operateurs wat binne 'n goedgekeurde plaaslike gebruiker area opereer, na suksesvolle aansoek by die toepaslike toloperateur.
- 5.2 Die plaaslike openbare vervoer operateur toltariewe vir die plaaslike gebruiker areas soos aangedui op die verskeie kaarte aangeheg by hierdie Kennisgewing en waarvan 'n afskrif by SANRAL verkry kan word, vir Klas 1 motorvoertuie alleen, betaalbaar by die Verkeerdevlei, Capricorn, Baobab en Brandfort Tolplazas geleë op die Vaalrivier, Verre Noord en R30/R730/R34 Tolpaaie, is uiteengesit in Tabel 4.

TABEL 4: PLAASLIKE OPENBARE VERVOER OPERATEUR TOLTARIEF				
TOLPAD	PLAZA		PLAASLIKE GEBRUIKER AREA	KLAS 1
N1 Vaalrivier	Verkeerdevlei	Hooflyn	Verkeerdevlei	R18.60
N1 Verre Noord	Capricorn	Hooflyn	Capricorn	R14.40
	Baobab	Hooflyn	Baobab	R15.20
R30/R730/R34	Brandfort	Hooflyn	Areas A, B & C	R9.20

## 6. GEREELDE GEBRUIKER AFSLAG

- 6.1 By spesifieke tolplazas, word 'n gereelde gebruiker afslag op die tolbedrag, alleenlik vir Klas 1 motorvoertuie toegestaan, onderhewig aan die terme en voorwaardes van SANRAL (beskikbaar by die Tolplazas), aan geregistreeerde gereelde gebruikers wat 'n voorgeskrewe aantal deurgange binne 'n bepaalde periode voltooi, na suksesvolle aansoek by die toepaslike toloperateur. By sommige van die spesifieke tolplazas, mag 'n geregistreeerde *bona fide* plaaslike gebruiker en 'n geregistreeerde *bona fide* plaaslike openbare vervoer operateur ook registreer as 'n gereelde gebruiker. Die gereelde gebruiker afslag word toegepas, na gelang van die aantal deurgange voltooi binne die bepaalde periode, of aan die waarde van die totale aantal deurgange, of aan die spesifieke reeks van deurgange.

'n Gereelde Gebruikerskaart moet aangebied word as betaling by 'n tolplaza – 'n Plaaslike Gebruikerskaart, Plaaslike Openbare Vervoer Operateurkaart, geldige Kredietkaart (bv. Visa- of Masterkaart), geldige Vlootbedryfskaart, mag geregistreeer word as 'n Gereelde Gebruikerskaart.

- 6.2 Die gereelde gebruiker afslae vir die spesifieke tolplazas geleë op die Hugenote, Vaalrivier, Verre Noord, Suidkus, Noordkus, Mariannhill, Magalies, N17 en R30/R730/R34 Tolpaaie, vir Klas 1 motorvoertuie alleen, na gelang van die aantal deurgange voltooi binne die bepaalde periode, op die tolbedrae soos vermeld in die toepaslike tabelle, is uiteengesit in Tabelle 5.1 en 5.2.

TABEL 5.1: GEREELDE GEBRUIKER AFSLAG – TIPE A						
TOLPAD	PLAZA		KALENDER MAAND	AFSLAG NA GELANG VAN AANTAL DEURGANGE		TOLTARIEF TABEL
				20%*	40%*	
N1 Hugenote	Hugenote	Hooflyn	1	20 tot 39	40 en meer	1
N1 Vaalrivier	Verkeerdevlei	Hooflyn	1	20 tot 39	40 en meer	1, 2 en 4
	Grasmere	Hooflyn	1	20 tot 39	40 en meer	1

N1 Verre Noord	Capricorn	Hooflyn	1	20 tot 39	40 en meer	1, 2 en 4
	Baobab	Hooflyn	1	20 tot 39	40 en meer	1, 2 en 4
N2 Suidkus	Izotsha	Op- en Afrit	3	20 tot 39	40 en meer	1
	Oribi	Hooflyn	3	20 tot 39	40 en meer	1
		Op- en Afrit (S)	3	20 tot 39	40 en meer	1
		Op- en Afrit (N)	3	20 tot 39	40 en meer	1
	Umtentweni	Op- en Afrit	3	20 tot 39	40 en meer	1
N2 Noordkus	King Shaka Lughawe	Oprit	1	10 tot 19	20 en meer	1
	oThongathi	Hooflyn	1	20 tot 39	40 en meer	1
		Op- en Afrit (S)	1	20 tot 39	40 en meer	1
		Op- en Afrit (N)	1	20 tot 39	40 en meer	1
	Mvoti	Hooflyn	1	20 tot 39	40 en meer	1
	Mandini	Op- en Afrit	1	20 tot 39	40 en meer	1
	Dokodweni	Op- en Afrit	1	20 tot 39	40 en meer	1
	Mtunzini	Hooflyn	1	20 tot 39	40 en meer	1
	Op- en Afrit (S)	1	20 tot 39	40 en meer	1	
	Op- en Afrit (N)	1	20 tot 39	40 en meer	1	
N3 Mariannahill	Mariannahill	Hooflyn	1	20 tot 39	40 en meer	1
N4 Magalies	Pelindaba	Hooflyn	1	20 tot 39	40 en meer	1
	Quagga	Hooflyn	1	20 tot 39	40 en meer	1
N17	Gosforth	Hooflyn	1	35 tot 69	70 en meer	1
		Op- en Afrit (W)	1	35 tot 69	70 en meer	1
		Op- en Afrit (O)	1	35 tot 69	70 en meer	1
	Dalpark	Hooflyn	1	35 tot 69	70 en meer	1
R30/R730/R34	Brandfort	Hooflyn	1	20 tot 39	40 en meer	1, 2 en 4

\*Die betrokke gereelde gebruiker afslag word toegepas aan die waarde van die totale deurgange voltooi binne die bepaalde period.

**TABEL 5.2: GEREELDE GEBRUIKER AFSLAG – TIPE B**

TOLPAD	PLAZA		KALENDER MAAND	AFSLAG NA GELANG VAN AANTAL DEURGANGE		TOLTARIEF TABEL
				Deurgange per maand	Afslag*	
N17	Leandra	Hooflyn	1	1 to 15	0%	1 en 2
		Op- en Afrit	1	16 to 20	40%	
	Trichardt	Hooflyn	1	21 to 30	55%	
	Ermelo	Hooflyn	1	31 en meer	70%	

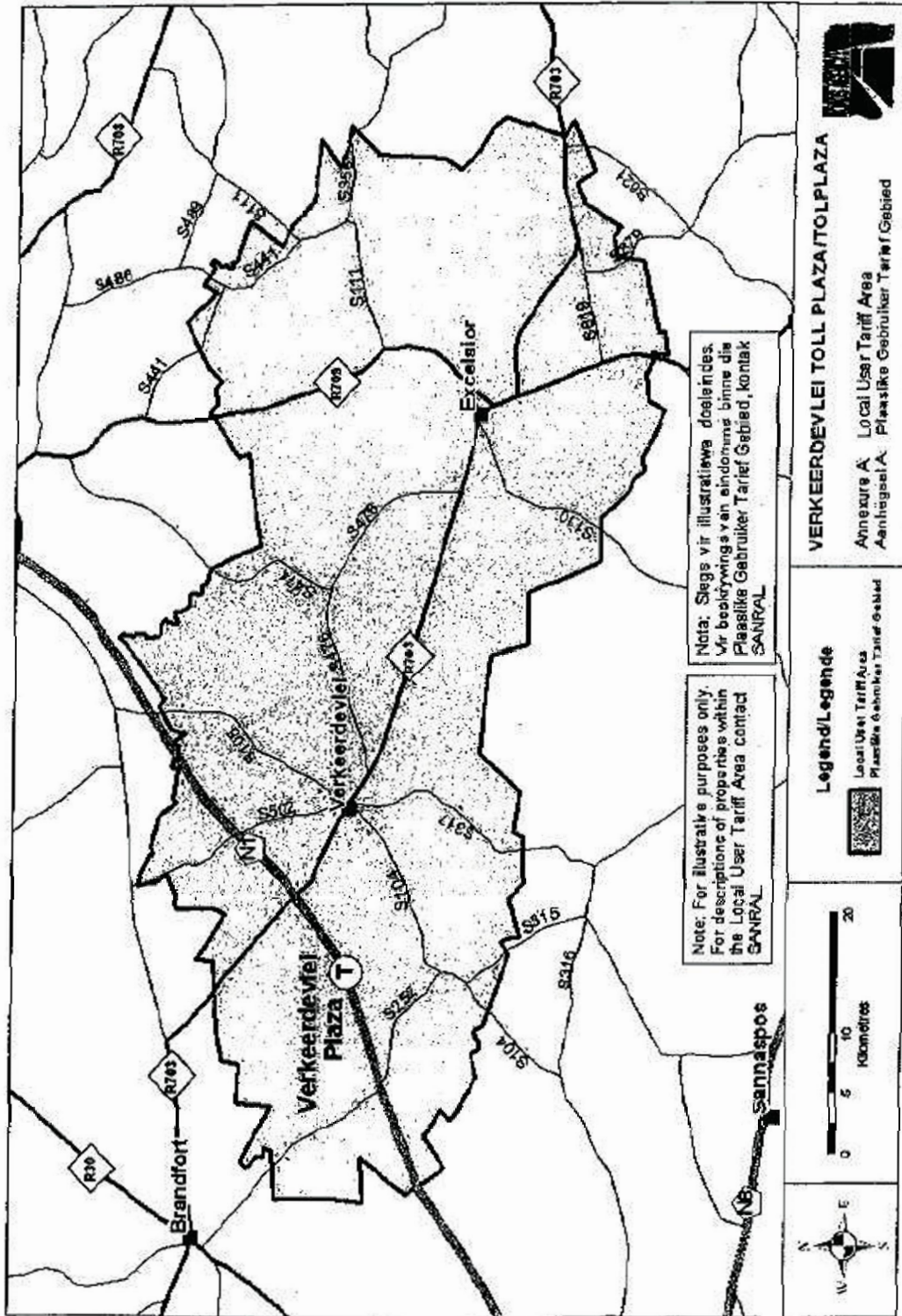
\*Die gereelde gebruiker afslag soos aangedui is slegs van toepassing op die deurgange wat in die spesifieke "deurgange per maand" reeks by 'n spesifieke tolplaza onderneem.

## 7. OPERASIONELE URE

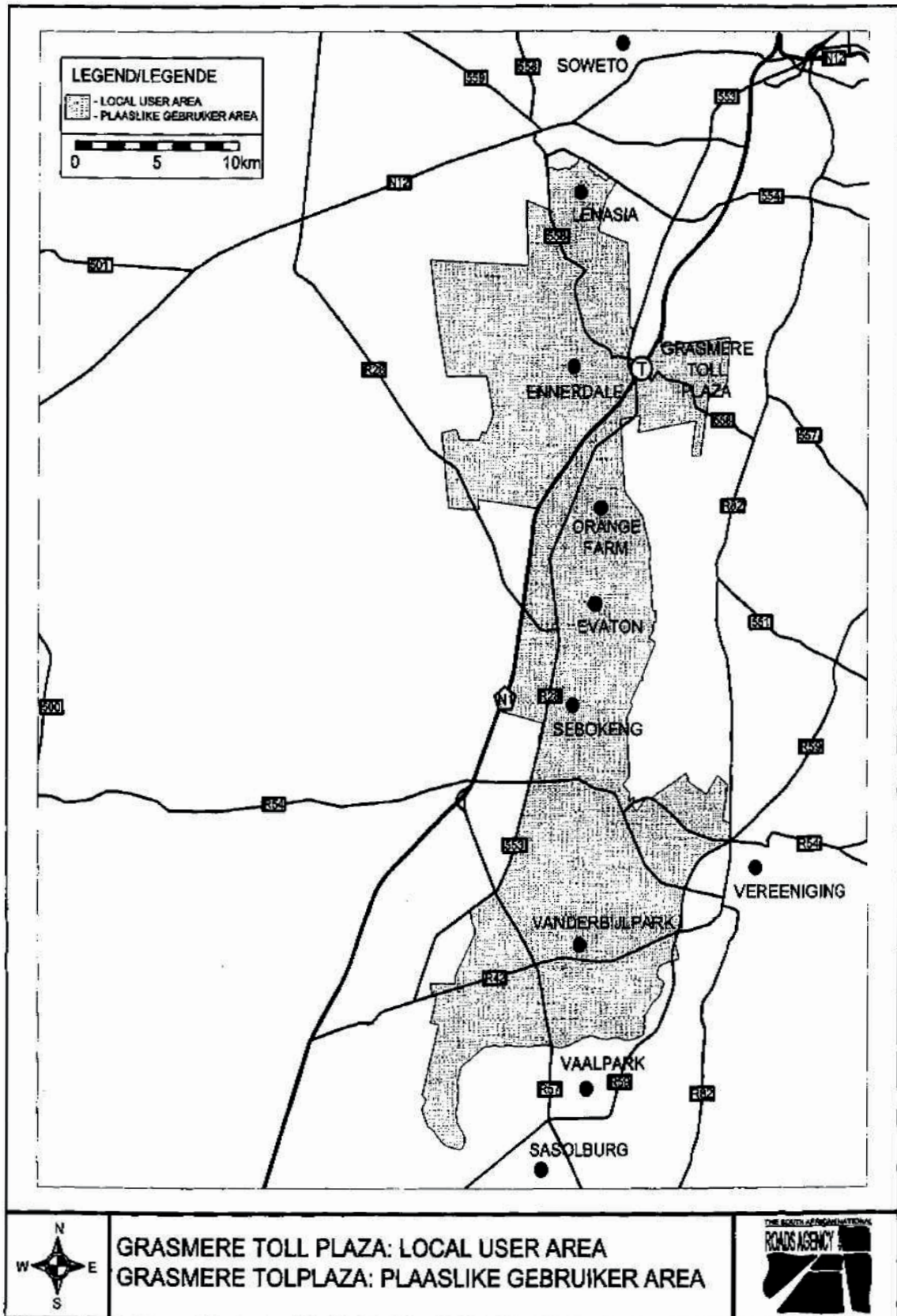
7.1 Die genoemde tolplaaie sal 24 uur per dag oop wees vir verkeer.

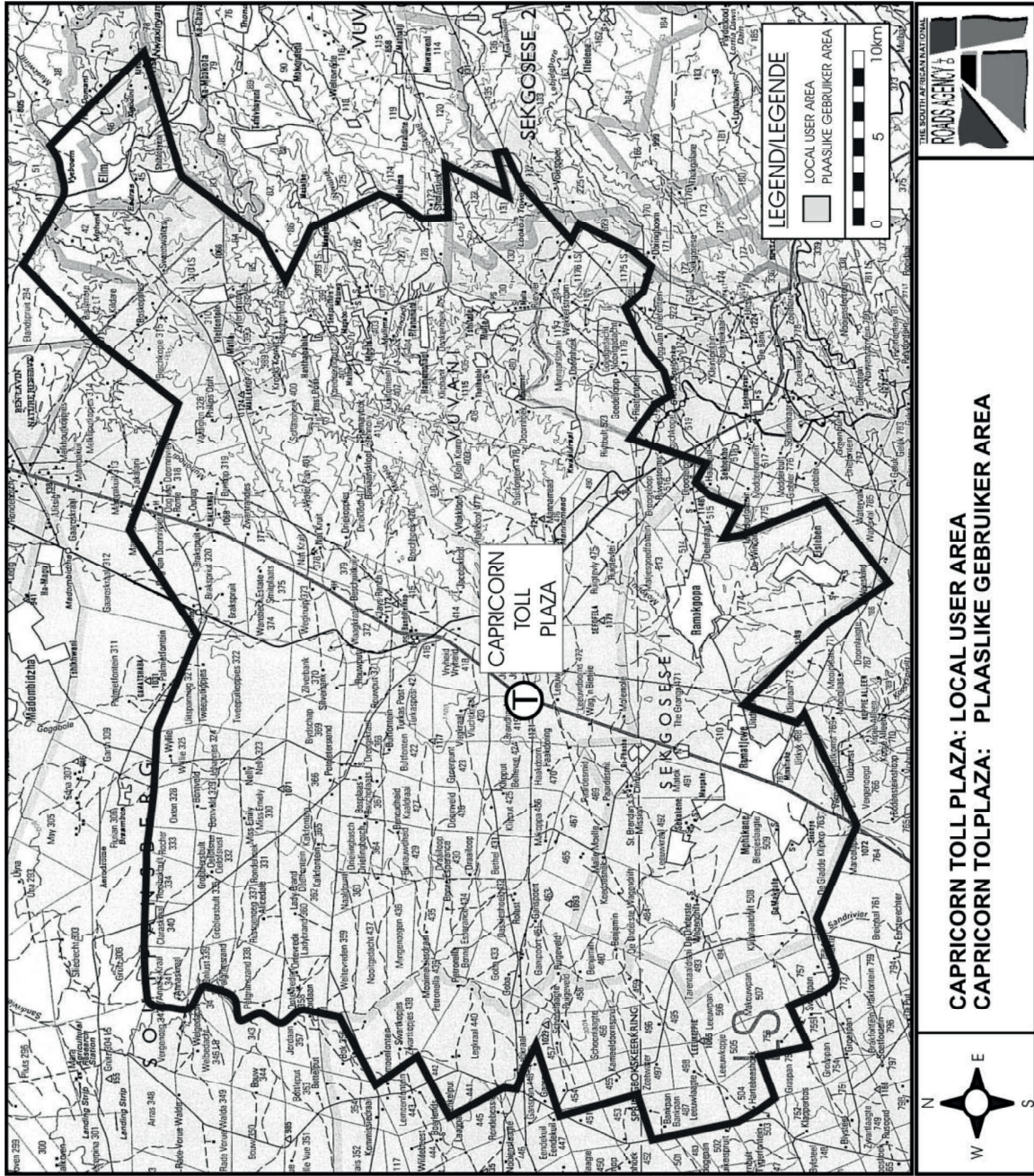
## 8. INWERKINGTREDINGSDATUM

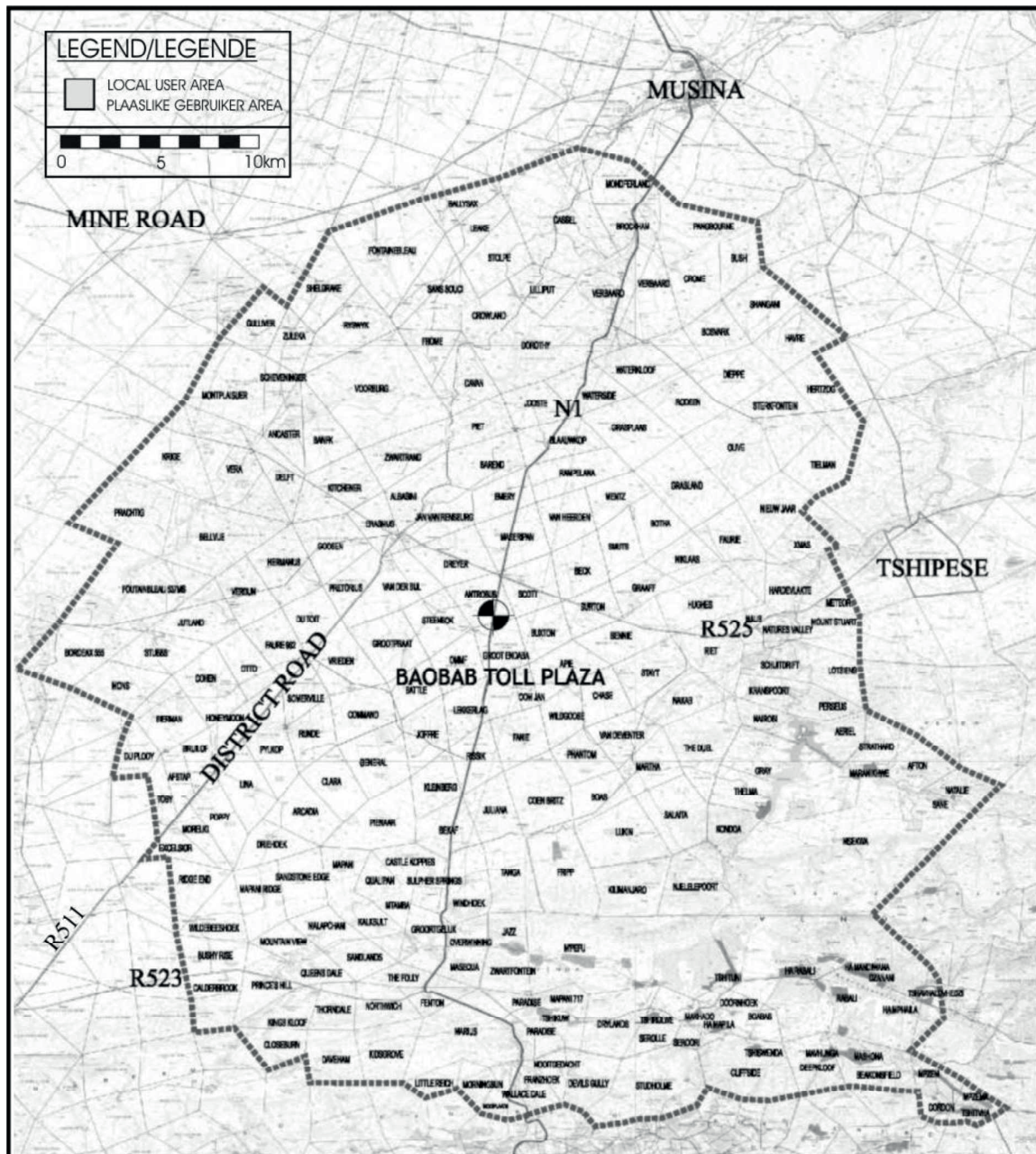
8.1 Die datum en tyd wanner die genoemde tolbedrae betaalbaar word, is 1 Maart 2021 om 00:00.



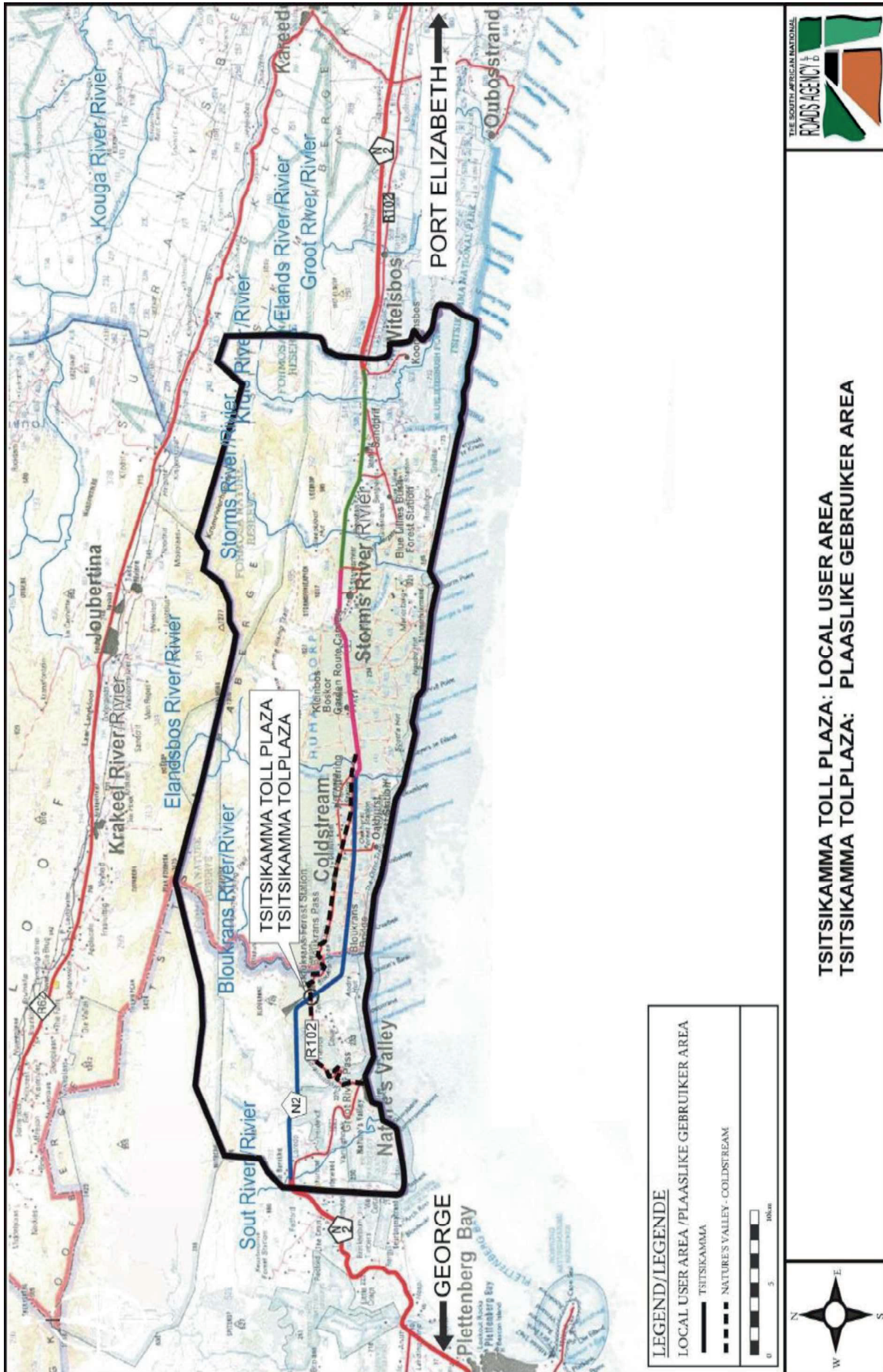


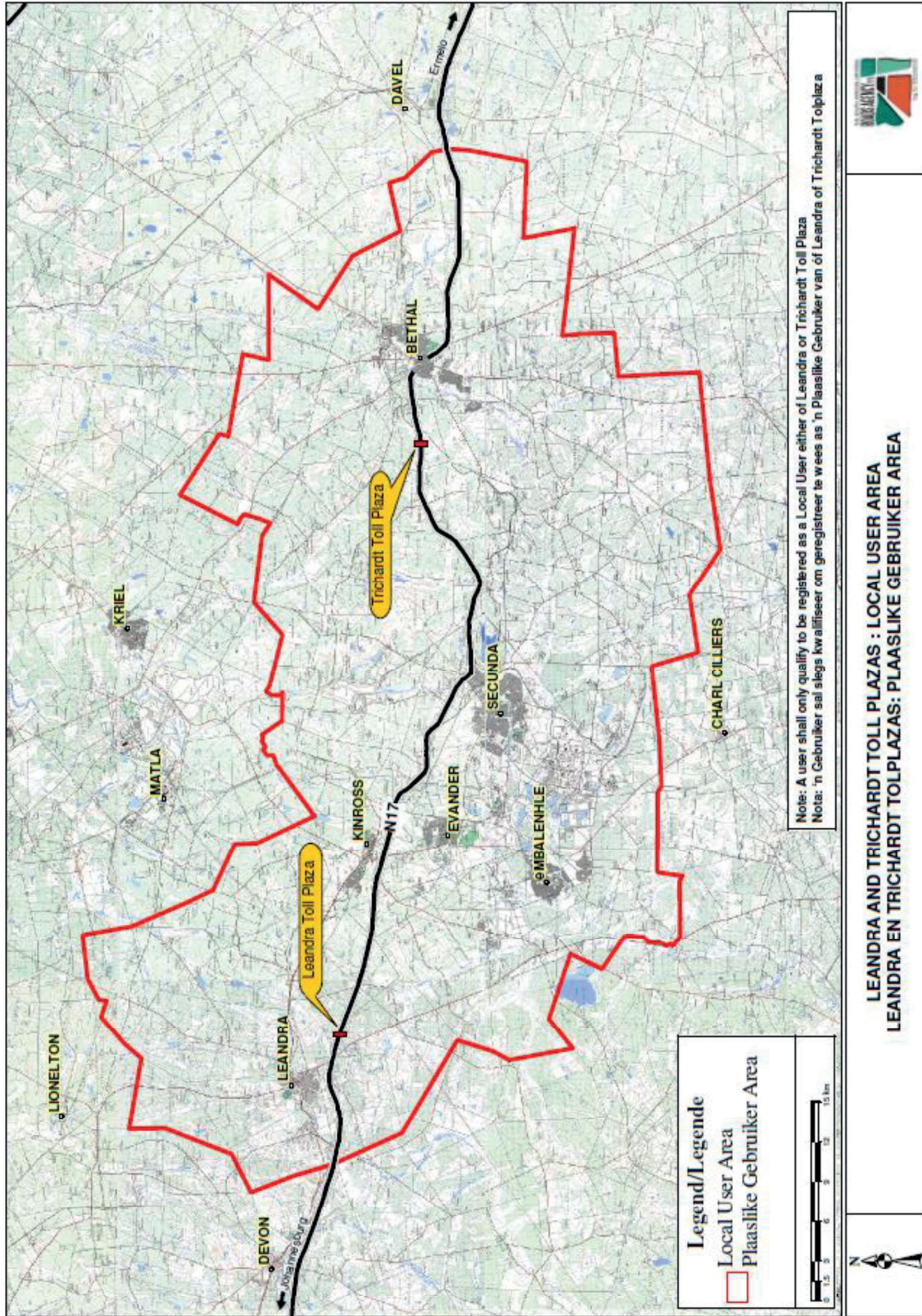




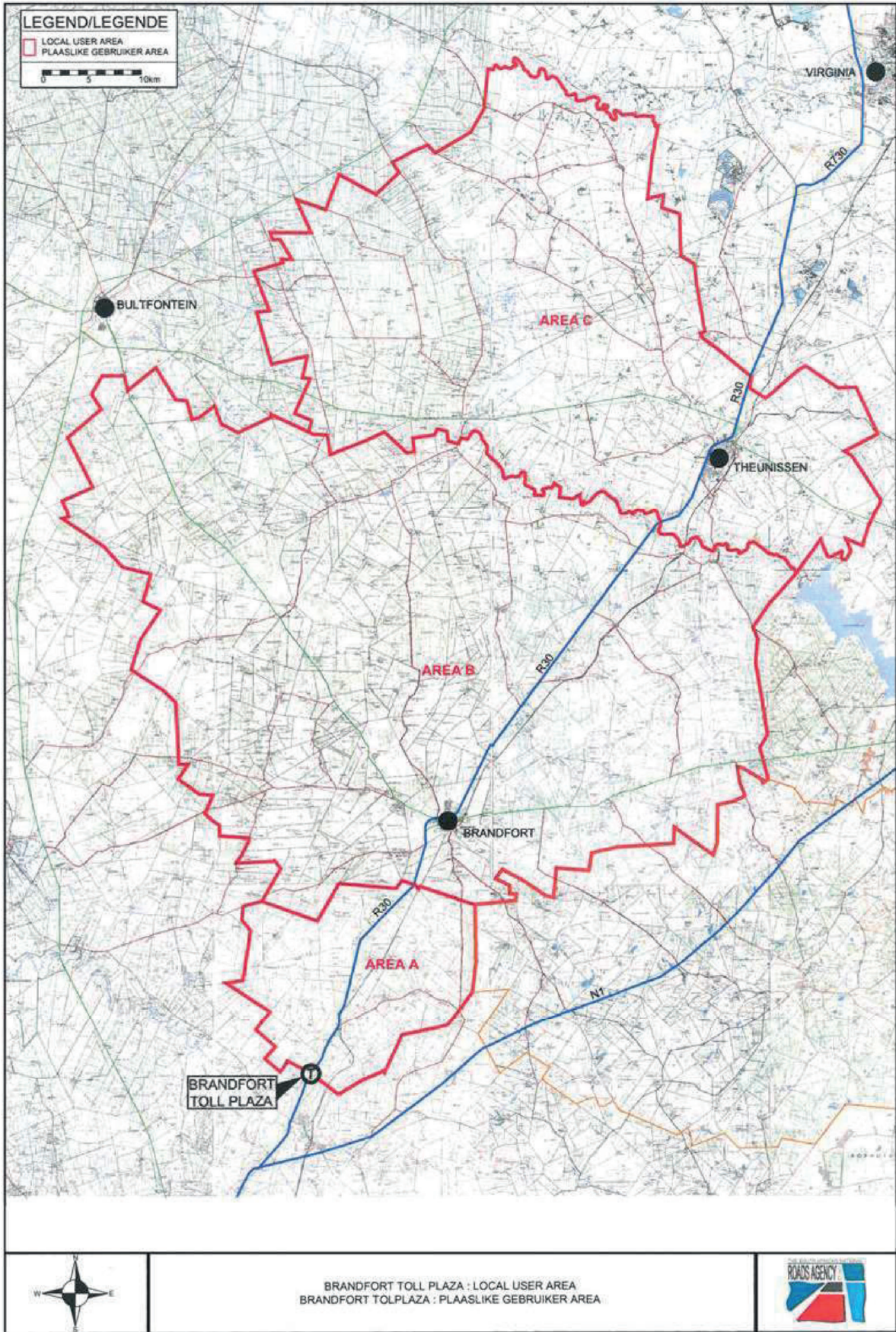


	<p><b>BAOBAB TOLL PLAZA: LOCAL USER AREA</b>  <b>BAOBAB TOLPLAZA: PLAASLIKE GEBRUIKER AREA</b></p>	
--	--	--





LEANDRA AND TRICHARDT TOLL PLAZAS : LOCAL USER AREA  
LEANDRA EN TRICHARDT TOLPLAZAS: PLAASLIKE GEBRUIKER AREA





Printed by and obtainable from the Government Printer, Bosman Street, Private Bag X85, Pretoria, 0001  
Contact Centre Tel: 012-748 6200. eMail: [info.egazette@gpw.gov.za](mailto:info.egazette@gpw.gov.za)  
Publications: Tel: (012) 748 6053, 748 6061, 748 6065